

D W I

riving
hile
mpaired



New Mexico 2006



New Mexico DEPARTMENT OF
TRANSPORTATION

MOBILITY FOR EVERYONE

Message from Rachel O'Connor
State DWI Czar
Office of the Governor



New Mexico has made tremendous strides in the fight against DWI. The efforts and resources of many State agencies and individuals involved in this quest have greatly contributed to a 15% reduction in fatalities from 2003-2006. As a result, New Mexico had its lowest alcohol-related death rate per 100,000 in 2006.

In 2006, enforcement, education, treatment and public awareness programs were intensified to concentrate resources in problem areas. In January the State developed the Drunk Buster Hotline to report drunk driving and increased the number of DWI checkpoints and saturation patrols statewide. Ignition Interlocks were mandatory for all convicted offenders in New Mexico in 2006 and prevented over 63,000 trips by drivers with alcohol in their system. The State Regulation and Licensing Department passed tough new "Three Strikes" regulations which allow the State to revoke the liquor licenses of those establishments that chronically serve minors and persons who are intoxicated, in addition funding was increased to support enforcement of the rule. New funds were allocated for a variety of projects including a Metro Court pilot for high risk first time offenders, court and treatment studies, and increased resources for the Motor Vehicle Division. The combination of these efforts was instrumental in continuing the State's progress in the battle against DWI in 2006.

We have only just begun. In 2008 we look forward to developing new projects and programs to further reduce DWI. Planned projects include the development of a State plan and accompanying projects to reduce DWI on tribal lands, increased funds for treatment, and a new public awareness project designed to engage the community in our efforts. Together we can further reduce DWI in New Mexico.

FOR MORE INFORMATION CONTACT:
New Mexico Department of Transportation
Traffic Safety Bureau
505-827-0427
1-800-541-7952

The University of New Mexico, Division of Government Research, produces this report for the New Mexico Department of Transportation. The report provides statistical information that contributes to the impaired driving plan and the DWI initiatives conducted statewide.

On the Cover:

Scenes like this one with a University of New Mexico patrol car played out more than 18 thousand times in 2006 as officers all over state made "You Drink, You Drive, You Lose" a reality.

Photo by David Jacobs

DWI in New Mexico

is a publication of the

New Mexico Department of Transportation
Programs Division
Traffic Safety Bureau

P.O. Box 1149
Santa Fe, NM 87504-1149
(505) 827-0427

<http://www.nmshtd.state.nm.us/main.asp?secid=14474>

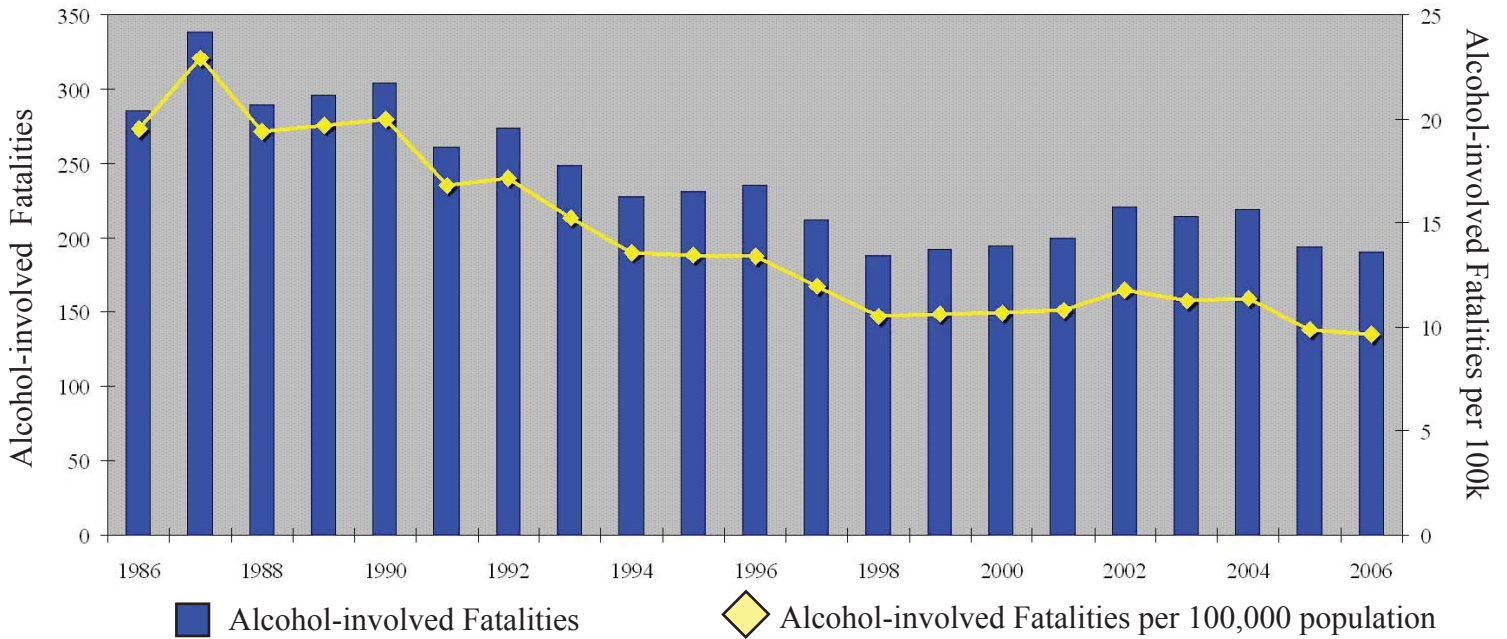
Impact on New Mexico	2
Laws	6
Where	8
When	10
How	12
Who	14
BAC Tests	15
Case Results	16
Trends	17
Repeat Offenders	19
Index and Sources	20
Fatal or Injury Impaired Crashes	Inside Back Cover
Per Capita Costs of Crashes Map	Back Cover

The Traffic Safety Bureau of the New Mexico Department of Transportation (NMDOT) develops programs to address traffic issues in the state. The mission of the Bureau is to continuously reduce traffic-related fatalities, injuries and crashes. Program initiatives include education, enforcement, regulation, legislation, prevention, screening and treatment, and public information. The Bureau works in partnership with New Mexico law enforcement agencies statewide to enforce traffic safety laws.

Note: Alcohol-involved crashes in 2005 were under-reported. Also, the 1999 crash file contains 15% fewer crashes than the 1998 file. This may be due to problems in implementing the new system after the old system failed, or to under-reporting. Care should be used when interpreting differences between 1999 and other years in this report.

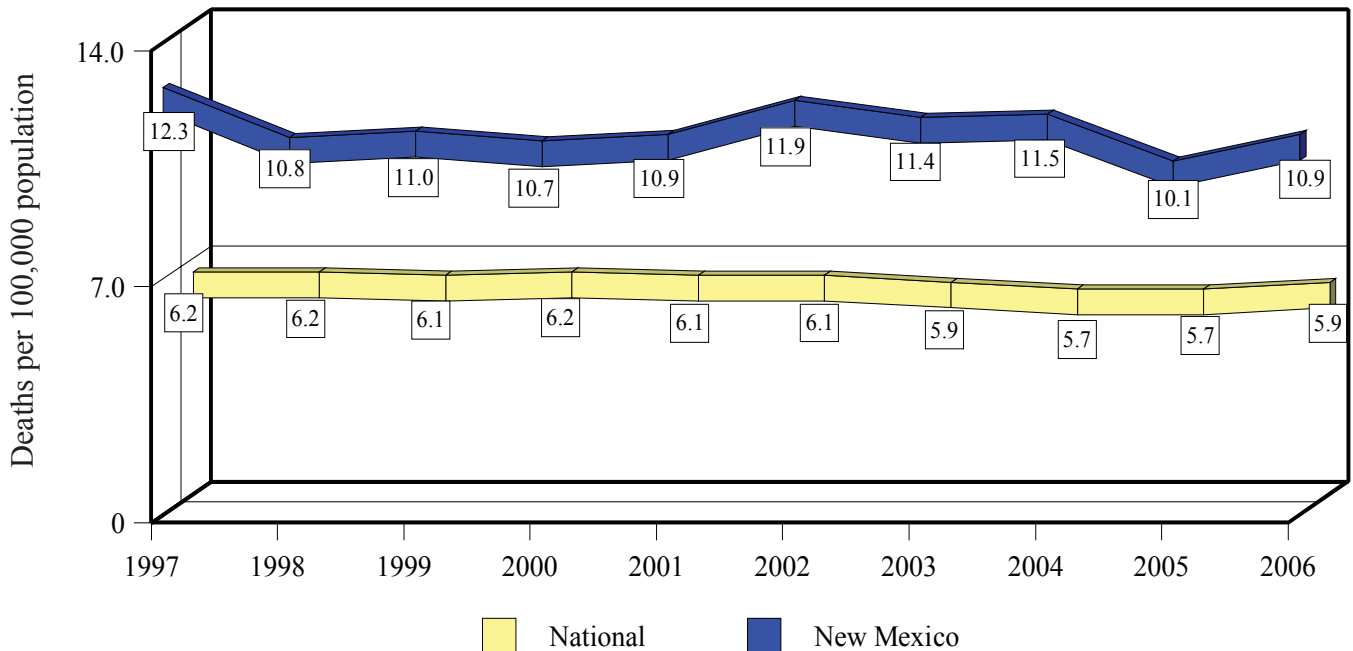
Who was impaired, by what? As in previous years, crashes involving drugs other than alcohol are included in all but the first table. This year there were 165 "drug only"-involved drivers. Crashes in which the only alcohol/drug involvement was on the part of a non-driver such as a pedestrian are also considered impaired crashes, and are included.

Alcohol-involved Fatalities and Rate, 1986-2006



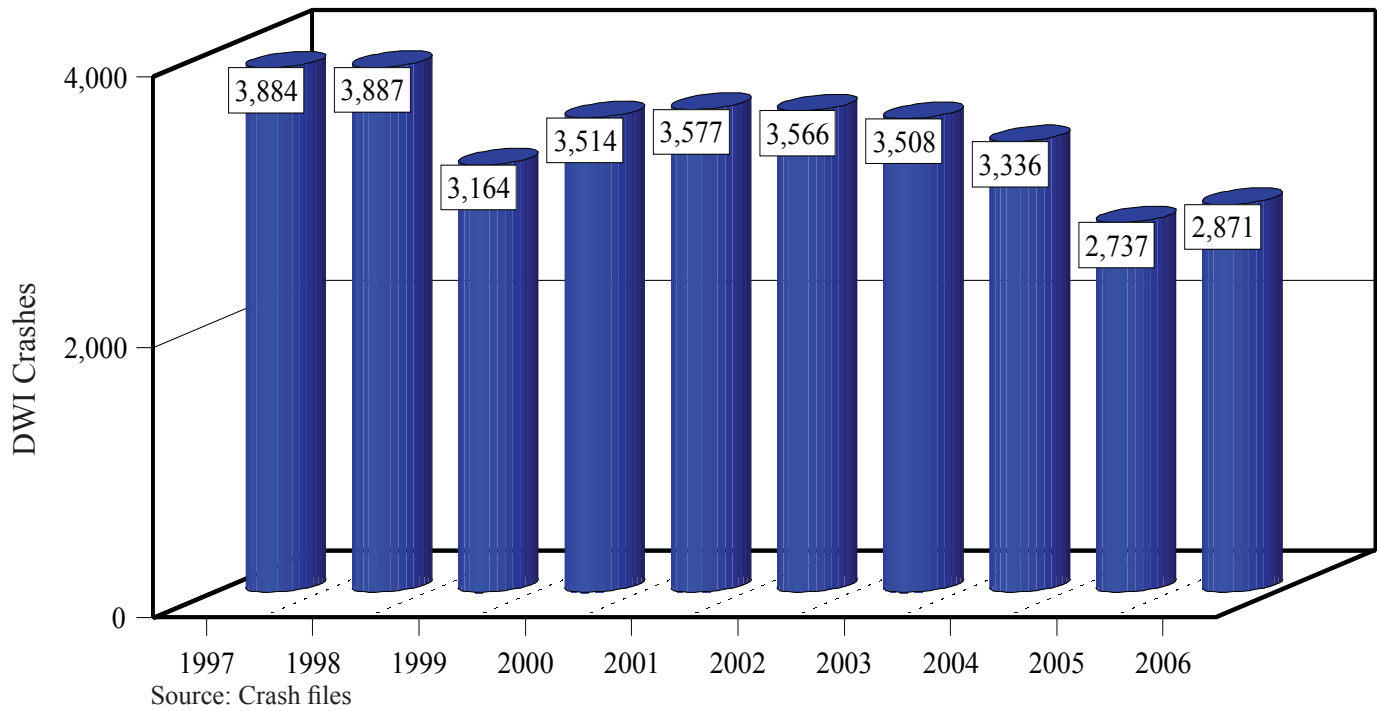
Source: Crash files, Census Bureau, UNM Bureau of Business and Economic Research (populations for 2001-2006)

Impaired Fatality Rates, 1997-2006

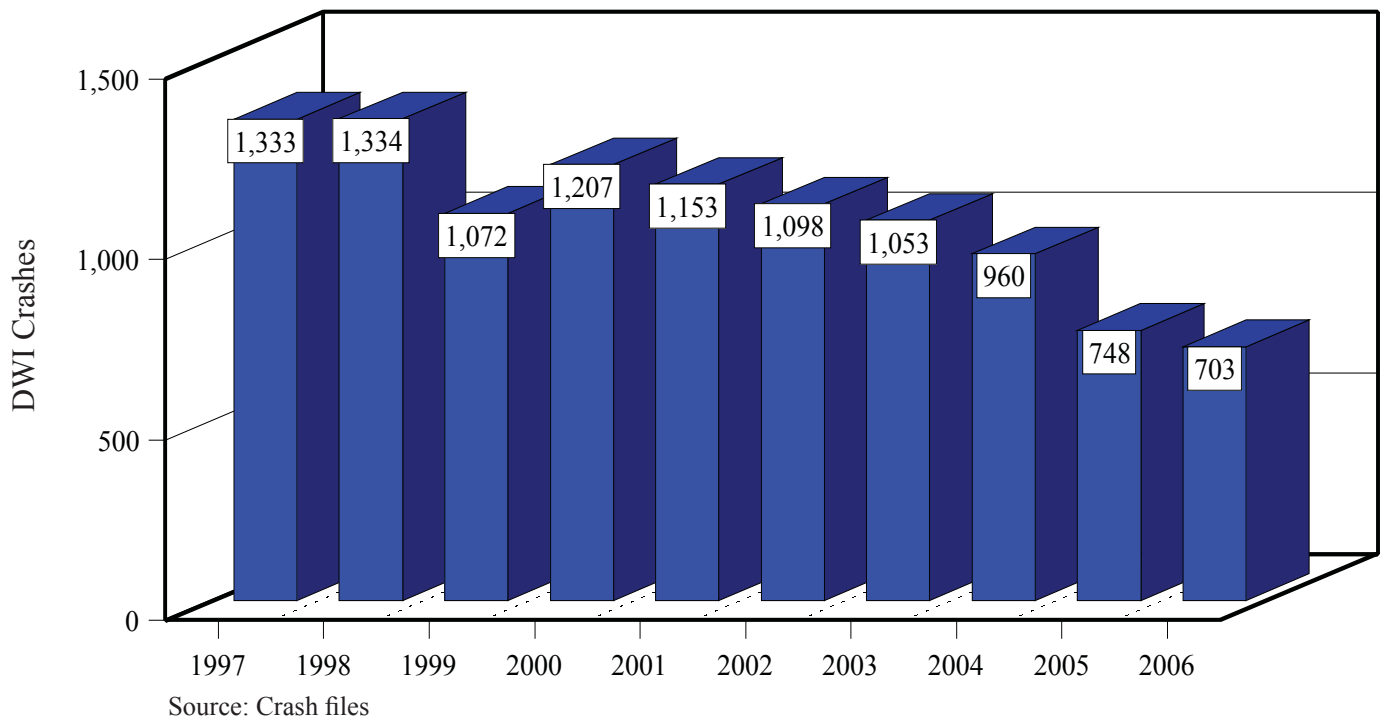


Source: Fatality Analysis Reporting System, the Census Bureau and Crash files

Impaired Crashes, 1997-2006

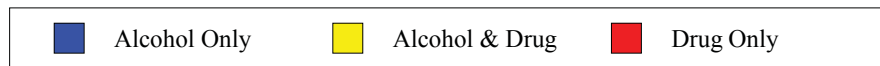


Impaired Serious Injuries, 1997-2006

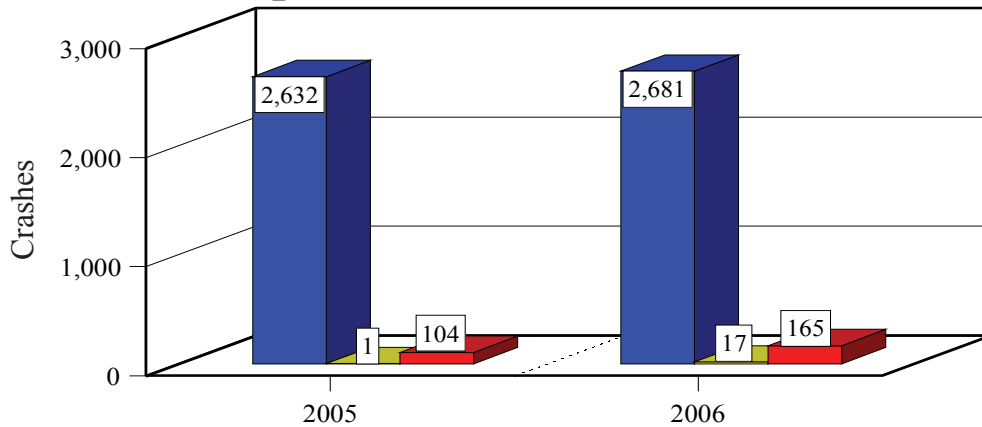


IMPACT

The first full year that data on involvement of drugs other than alcohol is available is 2005. It is likely that involvement of these drugs is under-reported.

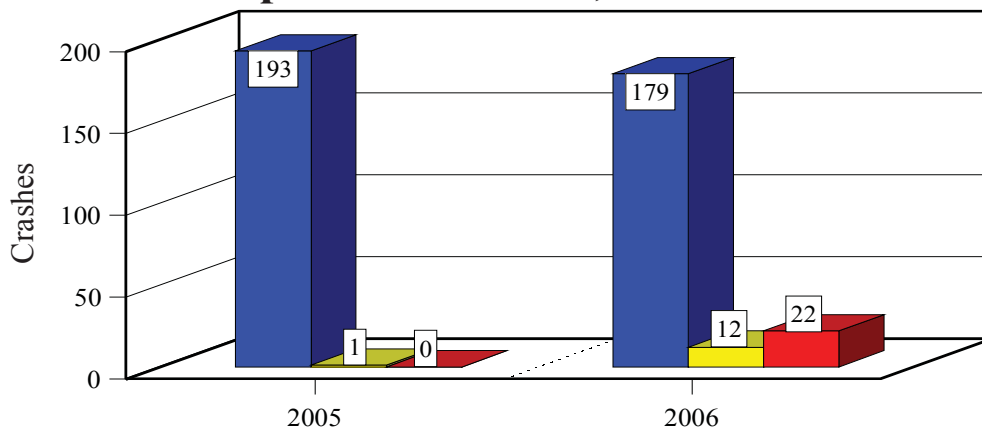


Impaired Crashes, 2005 - 2006



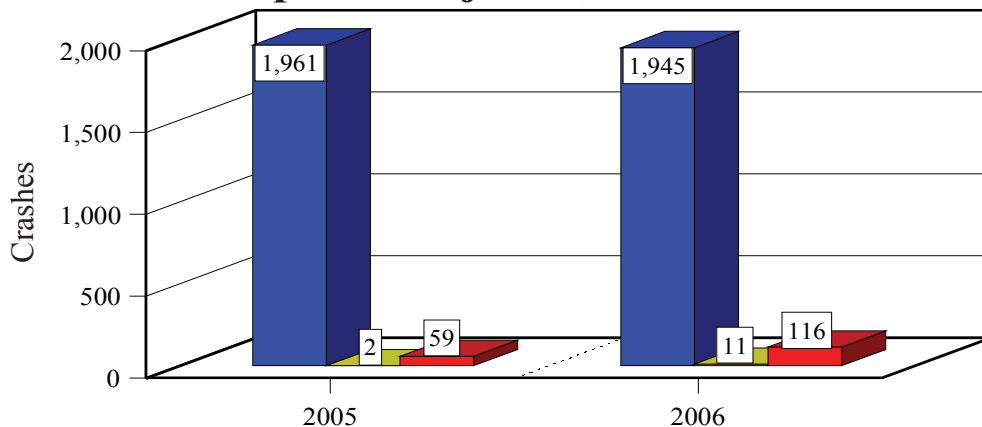
Source: Crash files

Impaired Fatalities, 2005 - 2006



Source: Crash files

Impaired Injuries, 2005 - 2006



Source: Crash files

Victims of Impaired Crashes, 2006

County	People in Crashes			Impact (in dollars) ²		2006 Population ³
	Total	Sober ¹	Under 18	Total (000)	Per capita	
Bernalillo	2,386	1,130	545	269,264	438	615,099
Catron	1	0	0	964	277	3,476
Chaves	198	83	42	38,192	611	62,474
Cibola	86	17	13	32,725	1,191	27,481
Colfax	42	8	2	17,158	1,270	13,514
Curry	124	77	58	14,029	308	45,513
De Baca	0	0	0	0	0	1,991
Dona Ana	434	160	62	101,623	524	193,888
Eddy	107	37	22	25,618	494	51,815
Grant	61	17	8	21,028	706	29,792
Guadalupe	21	5	3	12,263	2,809	4,365
Harding	1	0	0	964	1,343	718
Hidalgo	16	8	3	6,614	1,300	5,087
Lea	155	57	34	25,874	451	57,312
Lincoln	56	11	1	13,295	626	21,223
Los Alamos	10	4	4	1,456	77	19,022
Luna	34	11	3	10,726	394	27,205
McKinley	491	193	121	115,993	1,614	71,875
Mora	2	1	0	2,582	501	5,151
Otero	132	56	13	34,046	543	62,744
Quay	14	3	0	8,306	907	9,155
Rio Arriba	192	63	32	61,264	1,496	40,949
Roosevelt	46	13	10	12,803	700	18,291
Sandoval	214	88	27	50,825	447	113,772
San Juan	650	235	124	159,836	1,264	126,473
San Miguel	57	25	5	11,562	394	29,325
Santa Fe	566	234	92	119,382	838	142,407
Sierra	13	2	0	5,245	414	12,669
Socorro	30	13	3	9,930	544	18,240
Taos	99	28	25	28,471	894	31,832
Torrance	37	19	6	13,955	795	17,551
Union	14	5	4	5,306	1,396	3,801
Valencia	161	59	32	36,277	515	70,389
Total	6,450	2,662	1,294	1,267,577	649	1,954,599

Source: Crash files

1. Sober people are drivers, passengers and pedestrians who were involved in a crash with a driver or pedestrian who had been drinking.
2. Impact is the cost of DWI related crashes in New Mexico based on Federal Highway Administration estimation formulae (*The Costs of Highway Crashes*, FHWA-RD-91-055, Federal Highway Administration, 1991). The figures are based on 1988 dollars, adjusted for inflation to 2006 dollars. **These are estimates, not actual dollar amounts.** Included are direct costs such as lost wages and medical expenses, and indirect "willingness to pay" estimates of lost quality of life.
3. Population estimates are for July 2006 and are from the U.S. Census Bureau.

DWI Penalties in New Mexico*

Offense	Administrative License Revocation
Implied Consent Violation (Driving with BAC over legal limit or refusal take BAC test)	Age under 21 and BAC at least .02: 1 year for first offense Age 21 or older and BAC at least .08: 90 days for first offense CDL and BAC at least .04: 90 days for first offense Refusal: 1 year Any subsequent offense: 1 year Ignition interlock license available ²

Note that this is **not** a criminal offense, and the resulting license revocation is an administrative, not a criminal penalty. Municipalities are prohibited from establishing *per se* BAC limits different from state limits (§66-8-102.2). Licenses remain revoked until offenders reinstate them.

Criminal Sanctions (Basic Sentence)					Aggravated ³
DWI Offense	Jail ⁴	Fines/Fees/Costs ⁵	License Revocation	Other	If convicted of ADWI
1st Misdemeanor §66-8-102E	Maximum: 90 days ⁴ Mandatory: 48 hours if offender fails to comply with any condition of probation	Maximum: \$500 §66-8-102E License Fee: \$100 §66-5-33.1 Crime Lab Fee: \$65 §31-12-7A Community Fee: \$75 §31-12-7B DWI School: up to \$150 Alcohol Screening: \$100-\$200 Interlock license fee: \$45 Interlock costs: \$960+/yr. Corrections fee: \$20	1 year Interlock license required 66-8-102N(1) Tested within 3 hours of driving when the BAC is from alcohol consumed before or while driving ¹	Mandatory: Screening ⁶ DWI school Interlock installed for 1 year Community service (minimum of 24 hrs) If ordered by Court: treatment ⁶ §66-8-102E,K Probation (up to 1 year)	Mandatory: additional 48 hours jail §66-8-102D,E
2nd Misdemeanor §66-8-102F	Mandatory: 96 hours Maximum: 364 days ⁴ Mandatory: 7 days if offender fails to comply with sentence	Maximum: \$1,000 §66-8-102F Mandatory: \$500 §66-8-102F(1) Fees and costs are the same as for first offense	2 years §66-5-29A(3) Interlock license required ² §66-8-102N(2)	Mandatory: Community service (minimum of 48 hrs), screening ⁶ , treatment §66-8-102F(1),L,K,N Ignition interlock installed for 2 yrs §66-8-102N(3) If ordered by court: up to 5 years probation §66-8-102F	Mandatory: additional 96 hours jail §66-8-102D & F(1)
3rd Misdemeanor §66-8-102F	Mandatory: 30 days Maximum: 364 days ⁴ Mandatory: 60 days if offender fails to comply with sentence	Maximum: \$1,000 §66-8-102F Mandatory: \$750 §66-8-102F(2) Fees and costs are the same as for first offense	3 years Interlock license required ² 66-8-102N(3) ²	Mandatory: Screening ⁶ treatment, ignition interlock §66-8-102L,K,N Community service (minimum of 96 hrs) Ignition interlock installed for 3 yrs §66-8-102N(3) If ordered by Court: probation, up to 5 years §66-8-102F Vehicle forfeiture in civil action in Albuquerque, Las Cruces, & Santa Fe, and the counties of Doña Ana, Santa Fe, & Torrance.	Mandatory: additional 60 days jail §66-8-102D & F(2)

* All section numbers (§...) refer to New Mexico Statutes Annotated, 1978

Criminal Sanctions (Basic Sentence) - continued				
DWI Offense	Jail ⁴	Fines/Fees/Costs ⁵	License Revocation	Other
4th or 5th 4th Degree Felony §66-8-102G	Mandatory: 6 months (4th) 1 year for (5th) §66-8-102F,G Maximum: 18 months (4th) ⁴ 2 years (5th) ⁴ §66-8-102F,G	Maximum: \$5,000 §31-18-15E(5) Fees and costs are the same as for first offense	revoked for life ignition interlock license required 66-5-29A(3) & 66-5-29C(2)(c) Offender may apply to district court for restoration of license after 5 years.	Mandatory: treatment, screening ⁶ , ignition interlock for life §66-8-102K,M,P vehicle forfeiture in civil action as for 3rd
6th or subsequent 3rd Degree Felony §66-8-102I,J	Mandatory: 18 months(6th) 2 years (7th+) §66-8-102I,J Maximum: 30 months (6th) ⁴ 3 years (7th+) ⁴ §66-8-102I,J	Maximum: \$5,000 §31-18-15E(5) Fees and costs are the same as for first offense	Same as fourth offense	Mandatory: treatment, screening ⁶ , ignition interlock for life §66-8-102K,H,M,P vehicle forfeiture in civil action as for 3rd
Vehicular Homicide 3rd Degree Felony §66-8-101	Maximum: 6 years per 3 years offense ² §31-18-15A(5)	Maximum: \$5,000 §31-18-15E(4)	Depends on number of prior DWI offenses No interlock license available	4 years extra jail time added for each prior DWI conviction in the past 10 years. §66-8-101D Includes possible tribal convictions, §66-8-101E(2)
Driving While Revoked for DWI Misdemeanor §66-5-39	Mandatory: 7 days §66-5-39A Maximum: 364 days ⁴ §66-5-39A	Mandatory: \$300 §66-5-39A Maximum: \$1,000 §66-5-39A	1 year §66-5-39C	30 days immobilization of vehicle driven by offender. §66-5-39B vehicle forfeiture in civil action as for 3rd

Notes on DWI Penalties

1. **Testing time limits:** The results of a chemical test given *more than 3 hours after driving* may be introduced as evidence of the BAC in the driver's blood or breath at the time of the test (not the time of driving) and the judge or jury will determine how much weight to give the evidence §66-10-110E.
 2. **An ignition interlock license** allows drivers to drive without time and place restrictions and is available to every revoked driver except those who have committed vehicular homicide or great bodily injury by vehicle while under the influence of intoxicating liquor or drugs. An interlock is defined as "a device, approved by the traffic safety bureau, that prevents the operation of a motor vehicle by an intoxicated or impaired person." §66-5-502B. Out-of-state drivers convicted elsewhere of DWI within the last 10 years who apply for a NM license are eligible **ONLY** for an interlock license, according to the same schedule as NM offenders, §66-5-5E. The penalty for driving without an interlock when it's required by license is the same as driving while revoked, §66-5-504, §66-5-39. For an ignition interlock license application go to <http://ipl.unm.edu/traf/pubs/mvd10792.pdf>. **Criminal ignition interlock provisions:** Interlock **must** be installed on all vehicles driven by the offender **AND** offender must obtain ignition interlock license.
 3. **Aggravated DWI** is a conviction for DWI when the offender: (a) drove with a BAC (Blood Alcohol Concentration) of .16 or higher within 3 hours of driving when the BAC is from alcohol consumed before or while driving, **or** (b) caused a person bodily injury while DWI, **or** (c) refused a BAC test when arrested.
 4. **Mandatory jail time** must be served consecutively.
 5. **Fines and Fees** do not include increased insurance costs, treatment, lost wages, towing and storage, court costs and attorney fees.
 6. **Screening:** The judge shall sentence the offender to alcohol screening; the court will approve screening programs; the court does not have to order the offender to pay for it (§66-8-102K).
- ♦ *A deferred sentence on a first offense is considered a first offense for the purposes of defining subsequent offenses (§66-8-102E).*

Source: Institute of Public Law, UNM School of Law. Laws are available at IPL's Web site (<http://ipl.unm.edu/traf>).

Impaired Crashes and DWI Convictions by County, 2006

County	Crashes ¹				People Killed	People Injured	DWI Conv.	Rates ²		2006 Licensed Drivers
	Alcohol Fatal	% of all Fatal	Alcohol Injury	% of all Injury				Alcohol Crashes	DWI Conv.	
Bernalillo	37	53	406	7	38	661	3,411	1.0	7.8	436,935
Catron	0	0	0	0	0	0	12	0	3.6	3,305
Chaves	5	33	49	12	6	86	232	1.3	5.4	43,157
Cibola	5	45	14	14	5	28	243	1.2	15.0	16,207
Colfax	3	50	12	13	3	17	58	1.4	5.4	10,764
Curry	3	30	18	6	4	31	272	0.7	8.9	30,500
De Baca	0	0	0	0	0	0	7	0	4.2	1,682
Dona Ana	9	29	104	7	10	156	1,262	0.9	9.9	127,901
Eddy	7	54	19	6	7	29	222	0.7	6.0	37,248
Grant	3	50	14	7	3	20	159	0.7	6.9	22,943
Guadalupe	3	27	6	11	3	9	38	2.9	12.0	3,157
Harding	0	0	1	50	0	1	2	1.6	3.3	612
Hidalgo	2	40	2	5	2	5	32	1.1	9.1	3,529
Lea	5	23	28	7	6	46	248	0.8	6.2	39,683
Lincoln	2	29	11	9	2	18	126	0.8	7.3	17,162
Los Alamos	0	0	4	6	0	8	26	0.2	1.6	16,221
Luna	2	18	6	5	2	11	114	0.4	6.2	18,451
McKinley	28	70	64	16	32	134	819	2.4	21.4	38,197
Mora	1	50	1	17	1	1	37	0.5	10.0	3,704
Otero	7	47	32	8	7	49	249	1.0	6.2	40,283
Quay	0	0	9	13	0	10	44	1.2	6.0	7,337
Rio Arriba	7	70	39	15	8	83	406	1.5	13.3	30,527
Roosevelt	2	50	10	9	2	14	116	1.0	9.5	12,226
Sandoval	10	56	50	8	11	71	614	0.7	7.4	82,938
San Juan	23	58	129	14	23	215	1,165	2.0	15.3	76,377
San Miguel	2	22	10	11	2	26	234	0.6	12.5	18,723
Santa Fe	9	45	140	10	14	209	834	1.4	7.7	107,918
Sierra	1	100	5	8	1	6	52	0.6	5.5	9,490
Socorro	0	0	6	10	0	7	141	0.5	11.8	11,977
Taos	5	63	25	17	5	46	142	1.2	5.7	24,909
Torrance	4	50	8	11	4	11	106	1.1	9.4	11,280
Union	2	67	2	9	2	7	13	1.2	4.0	3,218
Valencia	9	64	31	9	10	57	300	0.8	6.0	50,062
Other							732			
Total	196	46	1,255	9	213	2,072	12,468	1.1	9.2	1,358,623

Sources: Crash files and Driver History file

1. The crash percentages shown are the percent of all crashes which involved alcohol. For example, 53 percent of all Bernalillo County fatal crashes involved alcohol, and resulted in 38 fatalities.
2. Rates are per 1,000 licensed drivers.
3. Severe crashes are those involving death or injury.

◆ DWI convictions are those handed down in 2006. The citations that resulted in these convictions could have been issued prior to 2006. See the note on page 18 for a complete explanation. Convictions are counted by county of driver residence, not the county in which the citation was issued. Driver residence county was determined by ZIP code. The 732 convictions received by drivers with missing, invalid, or out-of-state ZIP codes are shown as “Other” and are included in the total.

See map on inside back over

Impaired Crashes and DWI Convictions by City, 2006

City	Crashes ¹				People Killed	People Injured	DWI Conv.	Rates ²		2006 Licensed Drivers
	Alcohol Fatal	% of all Fatal	Alcohol Injury	% of all Injury				Severe ³ Alcohol Crashes	DWI Conv.	
Alamogordo	1	50	18	7	1	28	160	0.7	6.0	26,827
Albuquerque	34	54	389	7	35	634	3,327	1.0	7.9	421,177
Artesia	0	0	1	2	0	1	65	0.1	5.7	11,343
Aztec	0	0	6	9	0	8	97	0.5	8.5	11,353
Bayard	0	0	1	25	0	2	17	0.6	9.5	1,791
Belen	2	67	4	6	2	11	70	0.4	4.7	15,051
Bernalillo	1	50	12	12	1	14	92	2.0	14.3	6,414
Bloomfield	0	0	2	5	0	2	97	0.2	9.8	9,927
Bosque Farms	0	0	1	11	0	1	31	0.3	8.0	3,899
Carlsbad	0	0	10	5	0	12	145	0.4	6.0	23,999
Clayton	0	0	1	25	0	2	11	0.5	5.0	2,215
Clovis	2	29	13	5	3	24	261	0.5	9.3	28,062
Corrales	0	0	2	8	0	4	31	0.3	3.9	7,927
Deming	0	0	5	8	0	7	102	0.3	6.0	16,996
Espanola	1	100	22	9	1	39	162	2.0	13.8	11,781
Eunice	0	0	0	0	0	0	13	0	6.1	2,119
Farmington	1	25	61	12	1	99	473	1.7	13.2	35,969
Gallup	2	67	30	11	2	52	262	2.1	17.3	15,185
Grants	0	0	3	7	0	5	78	0.4	11.1	7,058
Hobbs	2	67	18	8	2	32	165	0.8	6.3	26,146
Jal	0	0	2	67	0	3	11	1.2	6.8	1,610
Las Cruces	1	8	72	6	1	96	809	0.9	9.8	82,957
Las Vegas	0	0	8	10	0	20	186	0.6	14.8	12,586
Lordsburg	1	100	0	0	1	3	23	0.4	9.2	2,511
Los Alamos	0	0	4	7	0	8	26	0.2	1.6	16,221
Los Lunas	4	80	18	10	5	27	173	0.8	6.4	26,986
Lovington	0	0	1	2	0	1	56	0.1	6.5	8,617
Milan	0	0	1	11	0	2	30	0.5	15.6	1,925
Portales	0	0	6	9	0	7	110	0.5	9.7	11,293
Raton	0	0	2	5	0	2	39	0.3	6.3	6,195
Rio Rancho	2	100	23	6	2	28	290	0.5	5.5	52,864
Roswell	4	80	34	11	5	54	208	1.0	5.5	37,818
Ruidoso	1	25	6	13	1	9	61	0.9	8.0	7,620
Santa Fe	4	50	92	9	4	136	726	1.0	7.9	91,623
Silver City	0	0	6	4	0	10	97	0.4	6.7	14,425
Socorro	0	0	4	17	0	4	82	0.6	11.5	7,129
Sunland Park	0	0	2	6	0	8	71	0.3	10.3	6,905
Taos	3	100	10	11	3	19	62	1.4	6.9	8,992
T or C	0	0	4	13	0	5	35	0.8	6.7	5,236
Tucumcari	0	0	2	8	0	2	35	0.4	6.5	5,395
Tularosa	0	0	1	13	0	1	27	0.3	6.9	3,927

Sources: Crash files and Driver History file

1. The crash percentages shown are the percent of all crashes which involved alcohol. For example, 50 percent of all Alamogordo fatal crashes involved alcohol, and resulted in 1 fatality.

2. Rates are per 1,000 licensed drivers.

3. Severe crashes are those involving death or injury.

◆ Only cities with estimated populations of 2,500 or more are included here.

◆ DWI convictions are those handed down in 2006. The citations that resulted in these convictions could have been issued prior to 2006. See the note on page 18 for a complete explanation.

Impaired Crashes and DWI Arrests by Month, 2006

Month	Crashes		Crashes	Arrests		Arrests
	Total	Percent		Total	Percent	
January	235	8.2		1,524	8.3	
February	191	6.7		1,517	8.3	
March	232	8.1		1,618	8.8	
April	225	7.9		1,645	9.0	
May	246	8.6		1,618	8.8	
June	237	8.3		1,384	7.5	
July	262	9.2		1,558	8.5	
August	272	9.5		1,548	8.4	
September	251	8.8		1,631	8.9	
October	273	9.5		1,375	7.5	
November	231	8.1		1,482	8.1	
December	208	7.3		1,447	7.9	
Total	2,863	100.0	90 180 270	18,347	100.0	800 1,600

Source: Crash files and DWI Citation Tracking file

Impaired Crashes and DWI Arrests by Day of the Week, 2006

Day	Crashes		Crashes	Arrests		Arrests
	Total	Percent		Total	Percent	
Sunday	352	12.3		1,701	9.3	
Monday	324	11.3		1,330	7.2	
Tuesday	311	10.9		1,676	9.1	
Wednesday	326	11.4		2,025	11.0	
Thursday	370	12.9		2,812	15.3	
Friday	580	20.3		4,479	24.4	
Saturday	600	21.0		4,324	23.6	
Total	2,863	100.0	300 600	18,347	100.0	2,000 4,000

Source: Crash files and DWI Citation Tracking file

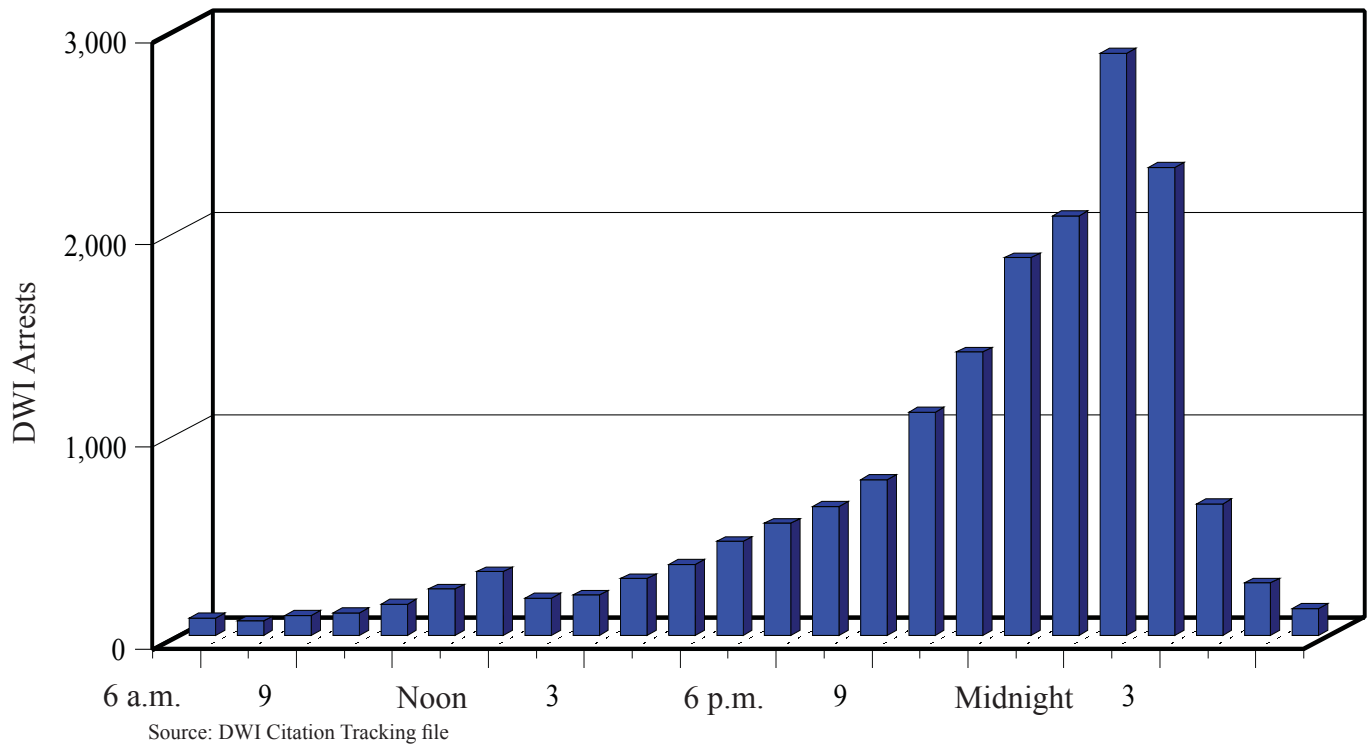
♦ For this table, each day was considered to run from 6:00 a.m. to 5:59 a.m. the following morning.

Impaired Crashes and DWI Arrests by Agency, 2006

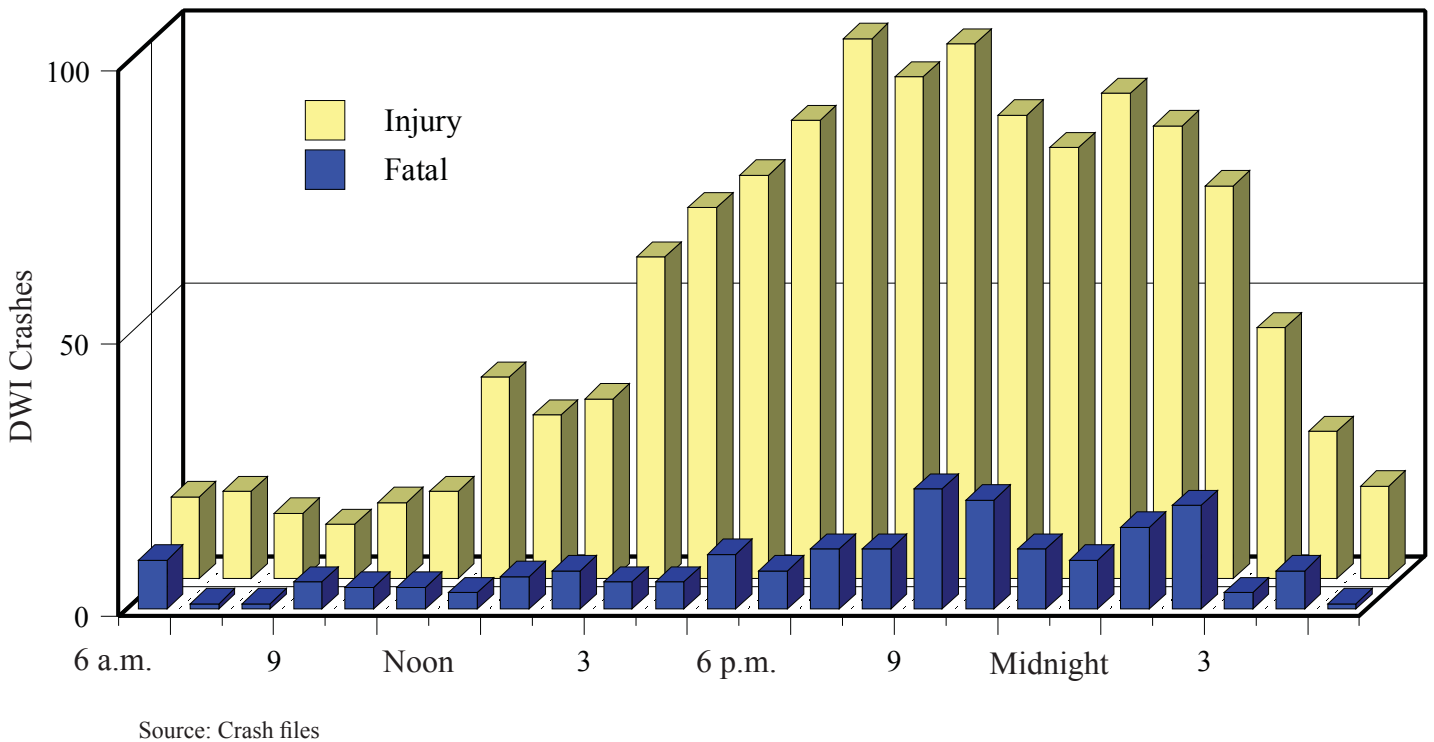
Agency	Crashes		Crashes	Arrests		Arrests
	Total	Percent		Total	Percent	
Albuquerque PD	797	27.8		5,334	29.1	
State Police	400	14.0		3,741	20.4	
County Sheriff	493	17.2		3,358	18.3	
Other City PDs	998	34.9		5,514	30.1	
Other	175	6.1		400	2.2	
Total	2,863	100.0	500 1,000	18,347	100.0	2,500 5,000

Source: Crash files and DWI Citation Tracking file

DWI Arrests by Hour of the Day, 2006



Impaired Crashes by Hour and Severity, 2006



Contributing Factors in Fatal Crashes, 2006

Contributing Factor	Count	Percent	Percent of Involvements		
Driver inattention	193	28.4			
Alcohol involved	191	28.1			
Excessive speed	186	27.4			
Other	96	14.1			
Other improper driving	75	11.0			
Drove left of center	61	9.0			
Failure to yield	32	4.7			
Mechanical defects	20	2.9			
Disregard traffic control	18	2.6			
Improper turn	17	2.5			
Improper overtaking	15	2.2			
Follow too close	6	0.9			
Total	680		10.0	20.0	30.0

Source: Crash files

- ◆ These are counts of all factors reported to have contributed to fatal crashes. These are *not* the same thing as fatal crash counts. A single crash often involves more than one vehicle, and each vehicle may be affected by more than one factor. The percents shown are the percents of vehicles in fatal crashes which were affected by each of the contributing factors. For these reasons the total here is higher than in other tables presenting fatal crash information, and the percentages sum to more than 100.

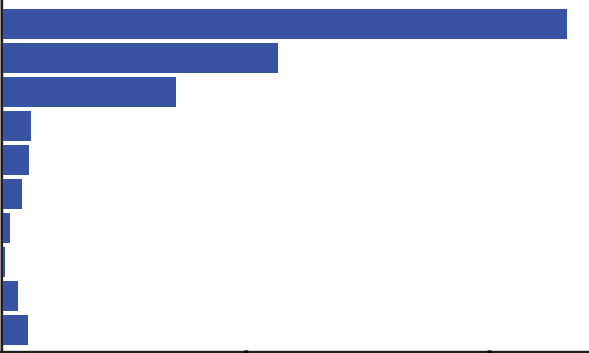
Impaired Crashes in New Mexico by Class, 2006

Class	Crashes					People	
	Total	% of Total	Fatal	% of Fatal	Injury	Killed	Injured
Other Vehicle	1,186	41	40	20	569	50	1,100
Fixed Object	896	31	28	14	318	30	411
Overturn	354	12	76	39	194	81	326
Parked Vehicle	215	8	1	1	67	1	97
Pedestrian	107	4	39	20	59	39	75
Other Non-collision	51	2	6	3	21	6	28
Pedalcyclist	27	1	2	1	18	2	18
Animal	17	1	0	0	6	0	8
Other Object	9	0	3	2	3	3	8
Vehicle on Other Road	1	0	1	1	0	1	1
Total	2,863	100	196	100	1,255	213	2,072

Source: Crash files

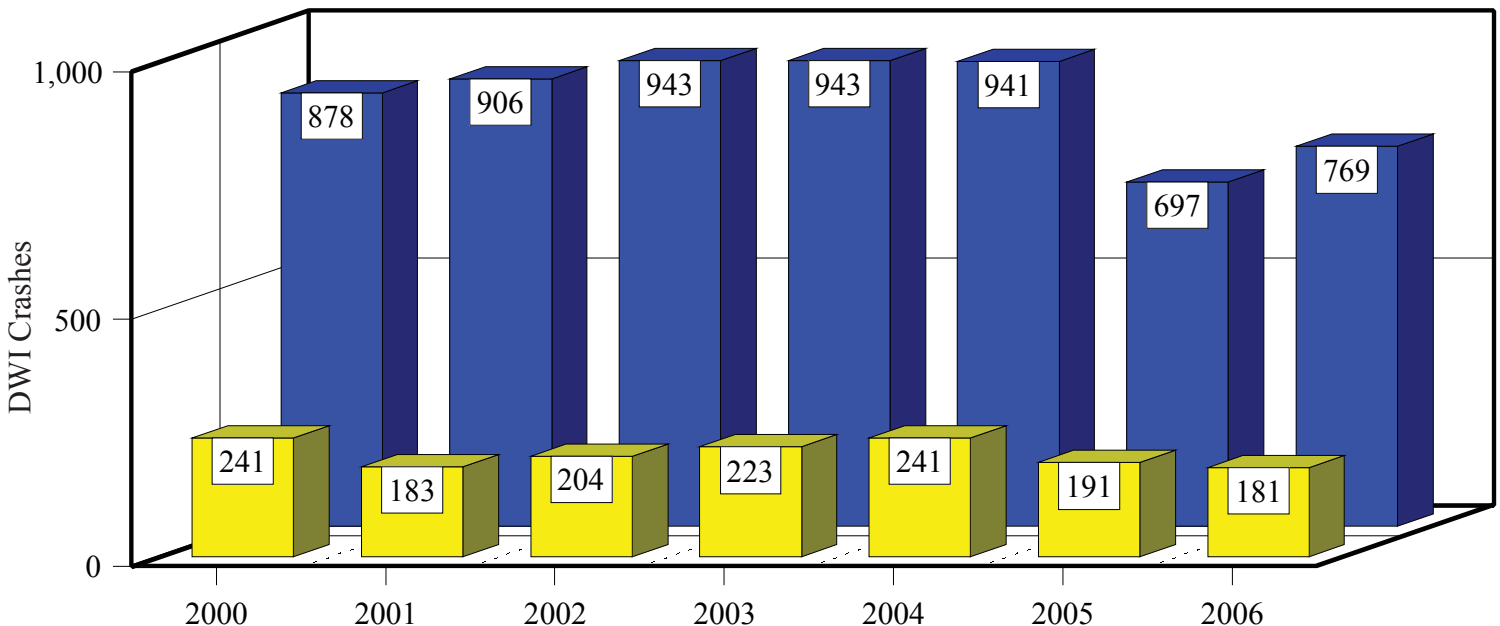
- ◆ Crash class is based on the first harmful event in the crash, such as colliding with something or overturning.

Impaired Crash Involvements in New Mexico by Vehicle Type, 2006

Vehicle Type	Total	Fatal	Injury	Total	
Passenger Car	2,316	103	1,017		
Pickup	1,129	57	527		
Van or 4WD	711	42	326		
Pedestrian	113	40	64		
Motorcycle	106	23	72		
Semi	76	19	22		
Pedalcyclist	29	3	19		
Bus	6	0	4		
Other	59	0	30		
Unknown	102	11	33		
Total	4,647	298	2,114		1,000 2,000

Source: Crash files

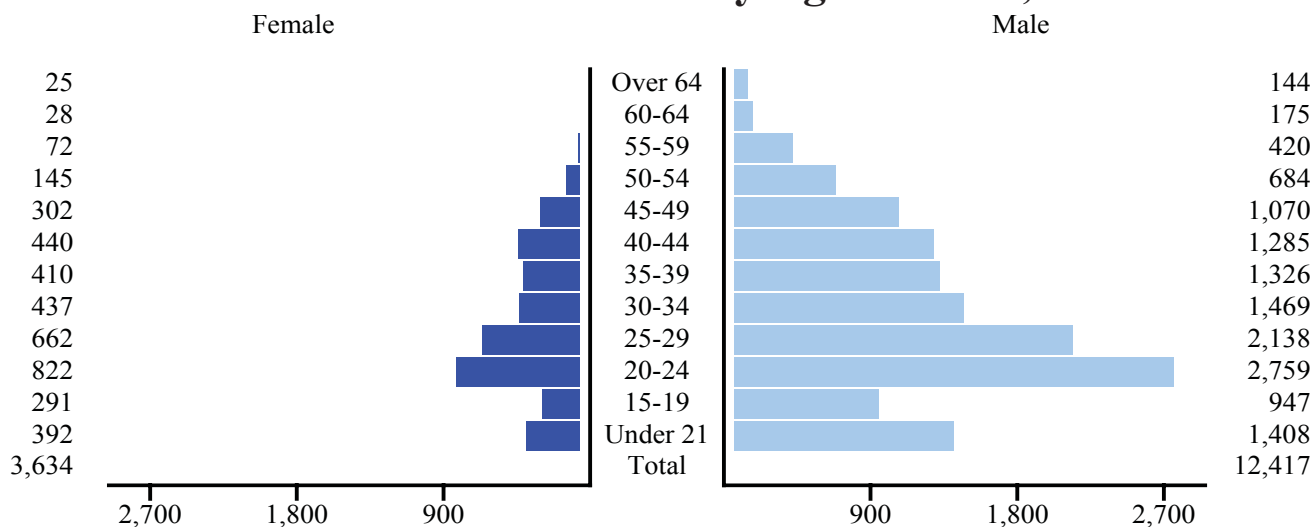
Impaired Crashes in New Mexico Involving Speed by Sex, 2001 - 2006



Source: Crash files

■ Male ■ Female

New Mexico DWI Arrests by Age and Sex, 2006



Source: DWI Citation Tracking file

Impaired Crashes and DWI Convictions by Driver Age and Sex, 2006

Age	Severe Crash Drivers ¹				DWI Conv.	Rates ²		Licensed Drivers
	Fatal		Injury			Severe Alcohol Crashes	DWI Conv.	
	Male	Female	Male	Female				
Under 15	0	0	1	0	1	*	*	35
15-19	17	5	97	31	660	2.18	9.60	68,764
20-24	35	7	223	57	2,811	2.69	23.50	119,626
25-29	29	4	151	41	2,318	1.85	19.06	121,593
30-34	14	3	75	34	1,609	1.10	14.00	114,946
35-39	11	1	87	36	1,447	1.14	12.25	118,096
40-44	18	2	90	34	1,374	1.11	10.59	129,795
45-49	13	7	73	24	1,021	0.83	7.28	140,212
50-54	17	6	52	20	611	0.71	4.56	134,093
55-59	7	2	34	13	360	0.45	2.88	124,827
60-64	2	1	13	3	169	0.21	1.85	91,339
Over 64	3	1	20	6	134	0.15	0.69	195,297
Total	166	39	916	299	12,515	1.05	9.21	1,358,623
Under 21	21	7	158	38	1,094	2.44	11.90	91,916

Sources: Crash files and Driver History file

1. Severe crashes are those resulting in death or injury.

2. Rates are per 1,000 licensed drivers.

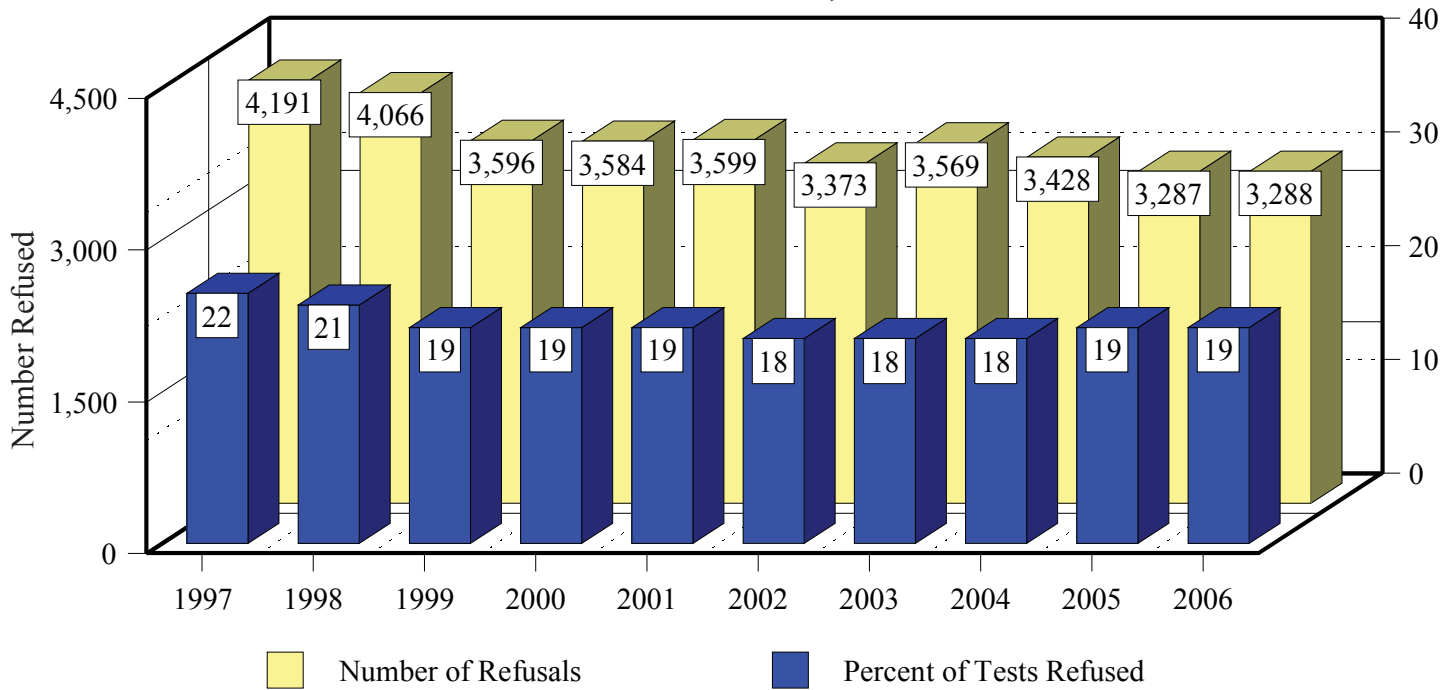
* Due to the low number of licensed drivers under 15 years old the rates for this age group are not informative.

◆ These are drivers or pedestrians in crashes who reportedly had been drinking.

◆ People under the legal drinking age of 21 accounted for 8.7 percent of the DWI convictions in 2006.

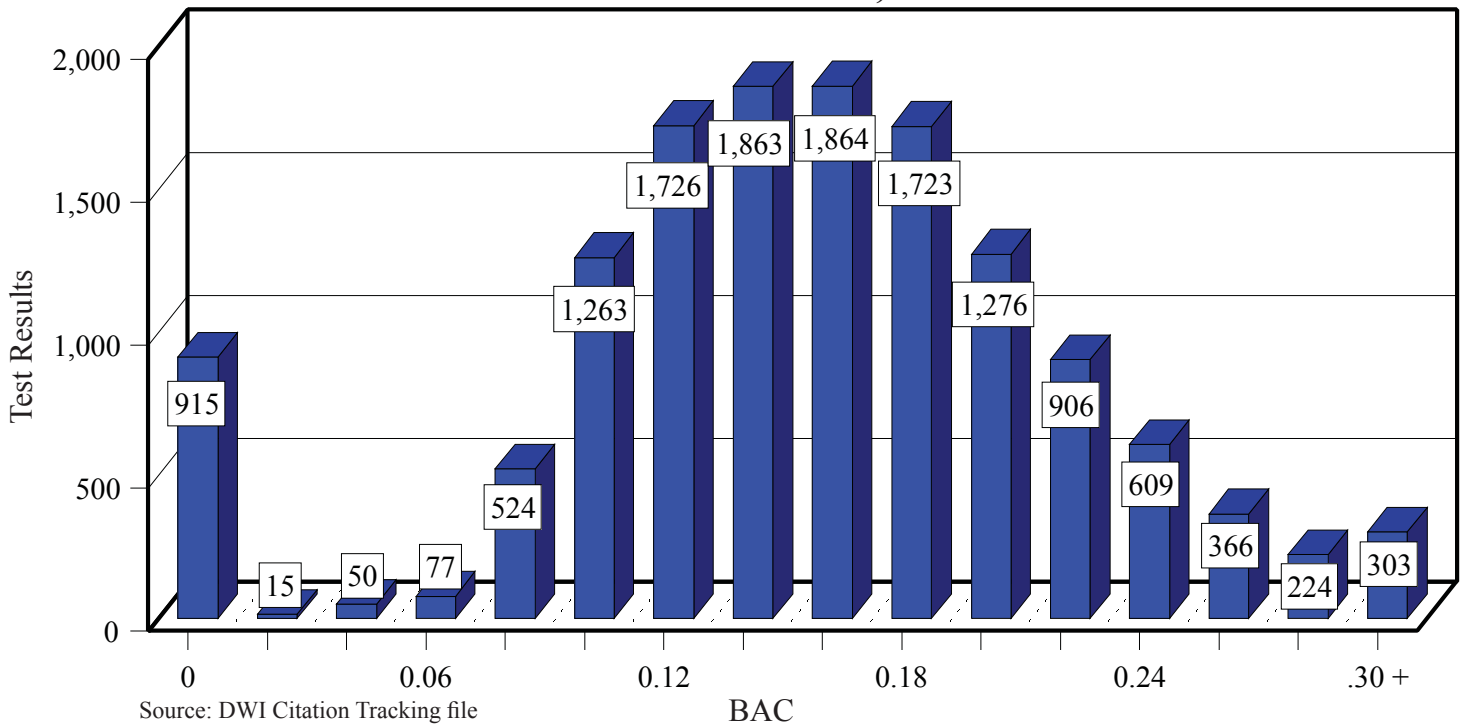
◆ See explanation of conviction counts on page 18.

BAC Test Refusals, 1997-2006



Source: DWI Citation Tracking file

BAC Test Results, 2006



Source: DWI Citation Tracking file

- ◆ The mean BAC (Blood Alcohol Concentration) result was 0.16, double the legal limit for drivers over 21. This average excludes tests with a result of 0.0.

RESULTS

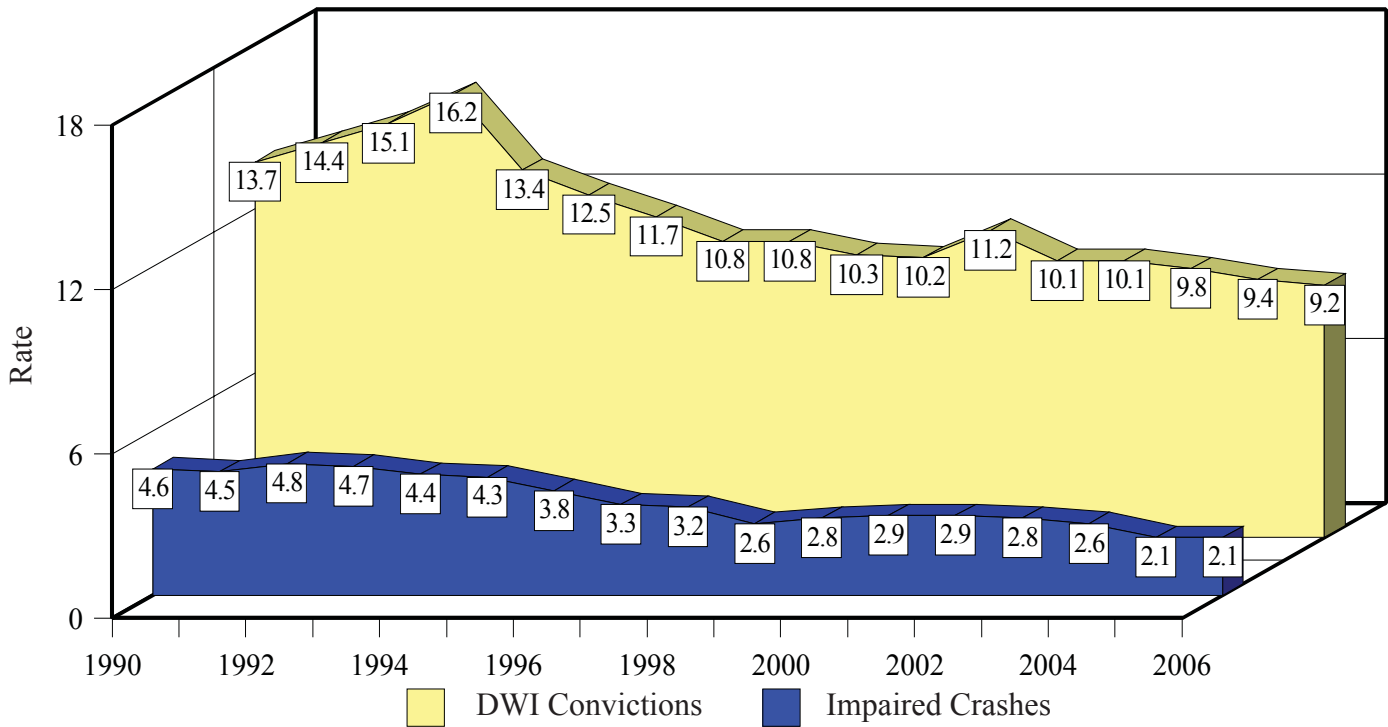
Mean Number of Days to Court Disposition by County, 2006

County	Total Arrests	Percent Crash Involved ¹	Mean BAC ²	Citations Resolved ³		Mean Days ⁴	
				DWI Conviction	Dismissal	DWI Conviction	Dismissal
Bernalillo	6,534	12	0.15	3,586	1,289	170	184
Catron	34	14	0.14	19	10	71	196
Chaves	240	26	0.17	177	33	83	157
Cibola	375	9	0.17	237	87	111	140
Colfax	99	20	0.17	65	14	64	147
Curry	401	6	0.16	260	29	113	157
De Baca	9	0	0.19	8	0	90	0
Doña Ana	1,811	14	0.16	1,130	203	104	139
Eddy	282	18	0.16	198	21	78	100
Grant	211	13	0.15	135	50	97	102
Guadalupe	49	14	0.18	36	3	77	102
Harding	7	28	0.10	5	1	123	293
Hidalgo	66	9	0.15	49	7	60	160
Lea	357	17	0.17	246	36	65	125
Lincoln	206	19	0.16	143	23	90	143
Los Alamos	57	14	0.17	24	6	188	174
Luna	162	12	0.16	109	28	95	127
McKinley	981	12	0.17	659	177	88	132
Mora	42	19	0.16	20	10	204	194
Otero	410	14	0.15	271	64	108	106
Quay	83	24	0.15	64	7	83	108
Rio Arriba	531	15	0.16	312	112	88	129
Roosevelt	175	14	0.15	127	16	79	166
Sandoval	641	16	0.17	357	126	136	155
San Juan	1,577	14	0.17	1,245	156	114	151
San Miguel	359	15	0.17	232	46	116	160
Santa Fe	1,346	18	0.16	800	165	109	147
Sierra	76	15	0.16	49	6	109	183
Socorro	238	11	0.16	139	37	92	150
Taos	218	24	0.18	128	55	139	138
Torrance	146	9	0.17	104	21	86	159
Union	49	6	0.15	24	14	86	73
Valencia	358	18	0.16	137	85	85	113
Total	18,130	14	0.16	11,095	2,937	124	159

Source: DWI Citation Tracking file

- 1 This is the percentage of citations that were issued after a traffic crash brought the DWI incident to police attention.
- 2 Only citations for which a BAC was determined are included; citations for which the offender refused to submit to a BAC test are excluded.
- 3 These are citations issued in 2006 for which results were available by July 2007. The conviction counts differ from those in other tables because these are based on citations issued in 2006 as opposed to convictions handed down in 2006. The resulting convictions or dismissals could have been decided in 2007.
- 4 These are the average number of days from the date of the citation to the date of any court disposition as of July 2007. For example, the 3,586 convictions in Bernalillo County were decided on average within 170 days after the citation.

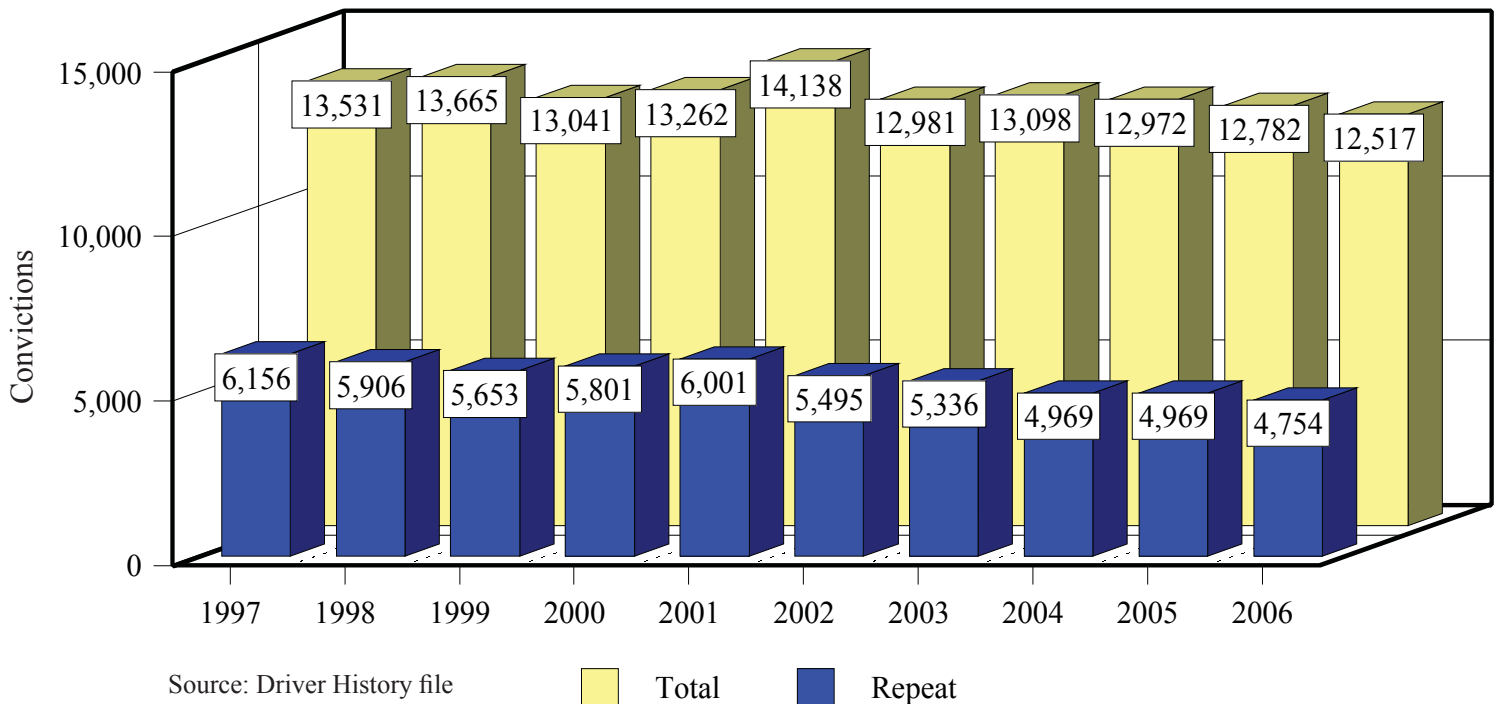
DWI Conviction Rates and Impaired Crash Rates, 1990-2006



Sources: Driver History file and Crash files

◆ The rates are incidents (convictions or crashes) per 1,000 licensed drivers. See page 18 for a note about convictions. The rate of impaired crashes has decreased 56% from 1992 to 2006.

Repeat and Total DWI Convictions, 1997-2006



Source: Driver History file

REPEAT OFFENDERS

Lifetime DWI Convictions for Drivers Convicted of DWI in 2006

Conviction	Since 1981	Percent	Number of DWI Convictions Since 1981
1st	8,164	68.0	8,164
2nd	2,485	20.7	2,485
3rd	908	7.6	908
4th	288	2.4	288
5th	98	0.8	98
6th	38	0.3	38
7th	14	0.1	14
8th	3	0.0	3
9th	1	0.0	1
10th or more	1	0.0	1
Total	12,000	100.0	

Source: Driver History file

DWI Convictions since 2001 for Drivers Convicted of DWI in 2006

Conviction	Since 2001	Percent	Number of DWI Convictions Since 2001
1st	9,485	79.0	9,485
2nd	2,015	16.8	2,015
3rd	405	3.4	405
4th	80	0.7	80
5th	11	0.1	11
6th	4	0.0	4
8th	1	0.0	1
10th or more	1	0.0	1
Total	12,002	100.0	

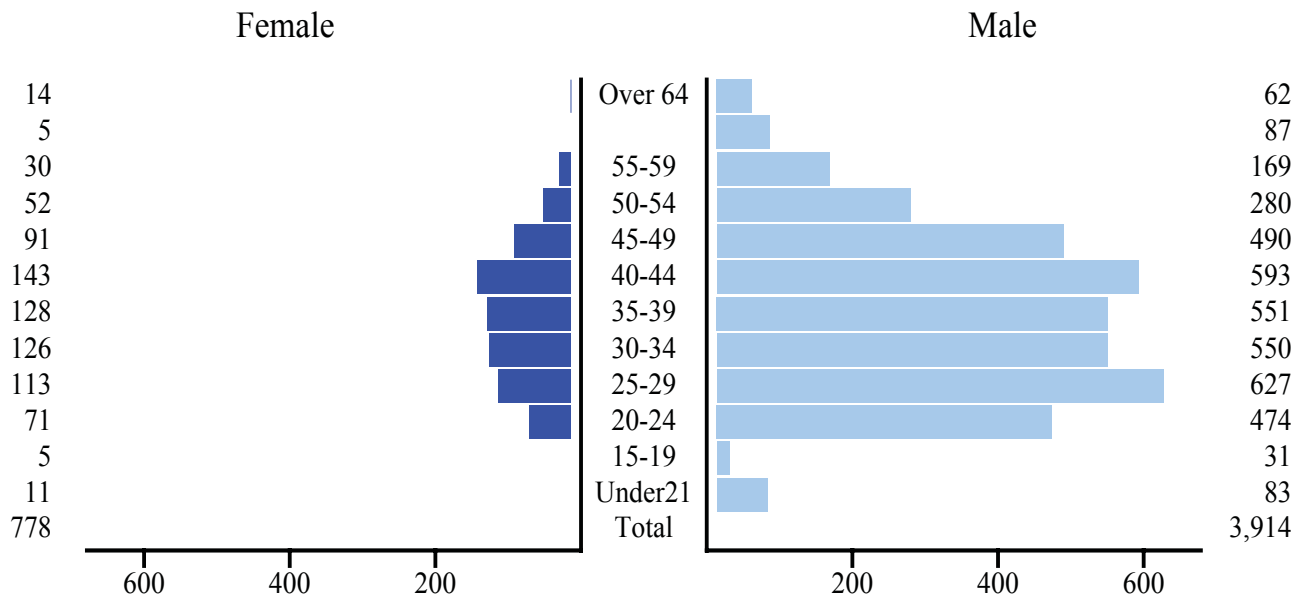
Source: Driver History file

- ◆ There were 12,002 people convicted of DWI in 2006. Of those, 9,485 had not been convicted since 2001, and 8,146 had not been convicted since 1980 (1,390 had been convicted at least once between 1980 and 2001). The number of repeat convictions (5,065, see chart on page 7) is *not* equal to the total minus the number of first convictions, because some people were convicted more than once in 2006. Only their last conviction is included in the table above, while all repeat convictions are included in the chart on the next page.

Conviction note: Unless otherwise noted, conviction counts in this report are based on convictions handed down in 2006, and are only comparable to counts since the 1994 edition of this report. The citations which resulted in these convictions could have been issued before 2006. Due to the sometimes lengthy period between citation and conviction (see table on page 18), counting convictions resulting from citations issued during a particular year would result in convictions after the publication of this report never being counted. By counting convictions regardless of citation date, all convictions are included.

REPEAT OFFENDERS

DWI Repeat Convictions by Age and Sex, 2006



Source: Driver History file

♦ See page 18 for a note about convictions.

Repeat DWI Convictions by NMDOT Districts*, 1997 - 2006

Year	District 1	District 2	District 3	District 4	District 5	District 6	State
1997	733	1,019	1,448	371	1,542	971	6,117
1998	635	936	1,631	331	1,380	914	5,846
1999	595	937	1,566	324	1,324	823	5,594
2000	670	911	1,455	310	1,591	784	5,747
2001	748	830	1,839	293	1,547	676	5,944
2002	680	672	1,654	308	1,511	587	5,430
2003	705	680	1,572	264	1,389	653	5,270
2004	668	615	1,105	302	1,384	801	4,879
2005	620	554	1,340	245	1,333	614	4,711
2006	636	465	1,304	213	1,151	630	4,467

Source: Driver History file

□ These Districts are based on counties, with the following definitions:

- District 1:** Doña Ana, Grant, Hidalgo, Luna, Sierra and Socorro
- District 2:** Chaves, Curry, De Baca, Eddy, Lea, Lincoln, Otero and Roosevelt
- District 3:** Bernalillo and Valencia
- District 4:** Colfax, Guadalupe, Harding, Mora, Quay, San Miguel and Union
- District 5:** Los Alamos, Rio Arriba, San Juan, Santa Fe, Taos and Torrance
- District 6:** Catron, Cibola, McKinley and Sandoval

INDEX & SOURCES

Age	5, 14, 19	Economic impact	5
Agency	10	Fatalities	2, 4, 8, 9, 12, 14
Arrests	10, 11, 14, 16	Hour	11
BAC tests	15, 16	Laws	6, 7
BAC test refusal	15	Licensed drivers	8, 9, 14
Citations	10, 11, 14, 16	Mean BAC	15, 16
Crash related	16	Mean days	16
City	9	Month	10
Contributing factors	12	Other drugs	2
Convictions	8, 9, 14, 16, 17	Penalties	6, 7
Repeat convictions	17, 18, 19	Population	2, 5
County	5, 8, 16	Rates	2, 8, 9, 14, 17
Day	10	Sex	13, 14, 19
Days to disposition	16	Sober people	5
District	19	Under 18	5
DWI crashes		Under 21	6, 14
All	8, 9, 13		
Fatal or Injury	6, 7, 10, inside back cover		

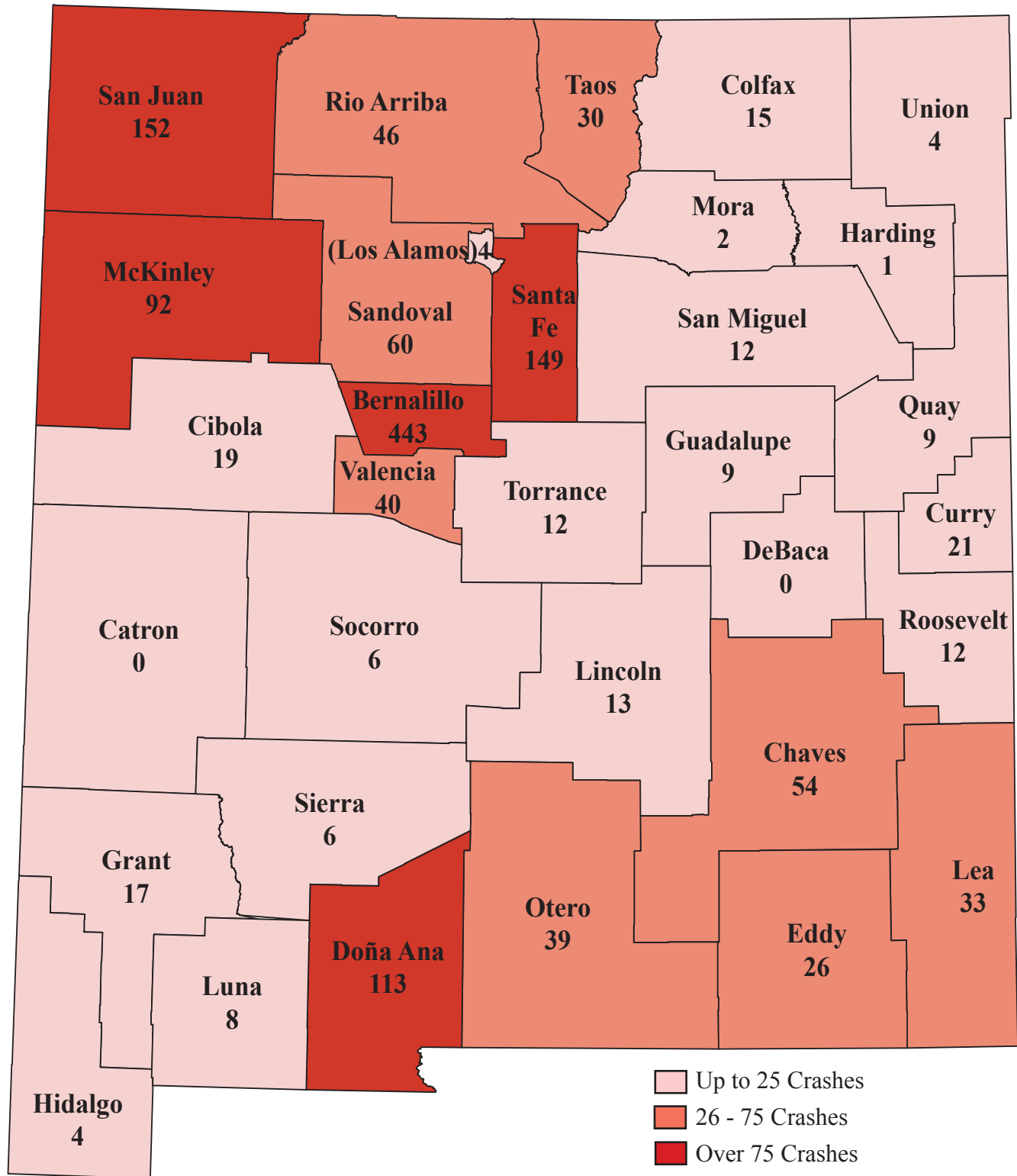
Source data are noted below each table. The data sources are:

BAC results	The Blood Alcohol Content (BAC) data for the chart on page 11 are from the Motor Vehicle Division's DWI Citation Tracking file (see below).
Crash files	Information from crash reports are submitted by the many law enforcement agencies in the state, compiled and processed by the NMDOT, Transportation Statistics Bureau and then reprocessed by the Division of Government Research, University of New Mexico.
Driver History file	Driver's license and conviction data maintained by the Motor Vehicle Division. Conviction data are current as of July 2006.
DWI Citation Tracking file	Data from all DWI citations submitted to, and maintained by, the Motor Vehicle Division. BAC test results in this file generally include only breath tests. Data are as of July 2006.
Fatality Analysis Reporting System	Database of all fatal crashes on public roads in the United States. This file is maintained by the National Highway Traffic Safety Administration
Licensed drivers	Counts are as of July 2006 from the Driver History file maintained by the Motor Vehicle Division.
Population	Except where noted, estimates are from the U.S. Census Bureau.

The Division of Government Research provides a wide range of data processing and analysis services. This report presents a portion of the data available concerning DWI in the state of New Mexico. These data are processed by DGR, but owned by the NM Department of Transportation or the Motor Vehicle Division of the Taxation and Revenue Department. Requests for further information should be directed to the Traffic Safety Bureau at the address inside the front cover.

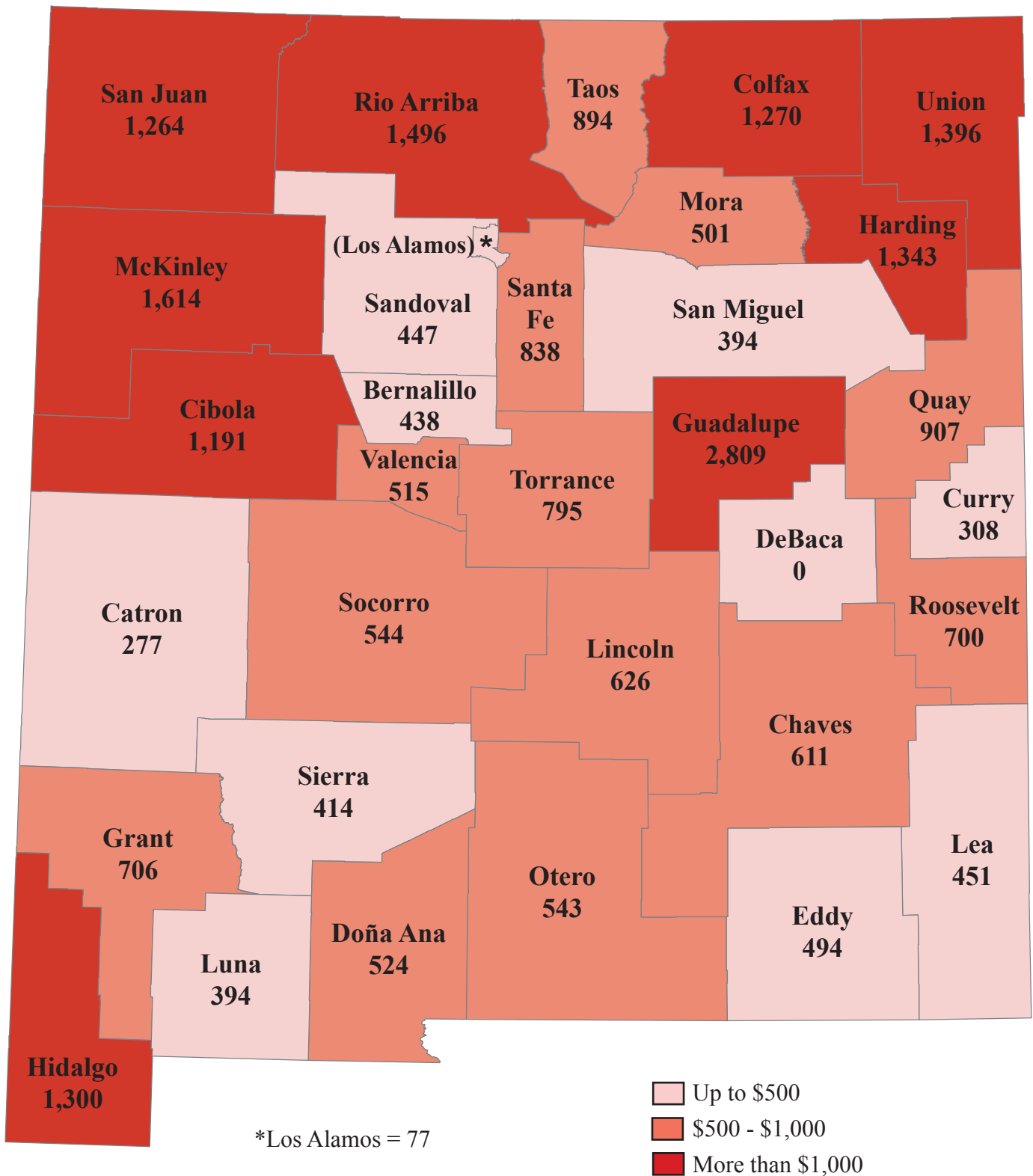
Several people at DGR are responsible for the data and analysis included in this report. Bich-Hanh Nguyen is Acting Manager of DGR. This report was produced by David Jacobs, Jim Holten IV and James Sturgis, and edited by Keith W. Smith. Special thanks go to the University of New Mexico Police Department, Lt. James Madrid and Lt. Davis, for their help with the cover photograph.

Number of Fatal or Injury Impaired Crashes, 2006



See chart on page 8

Per Capita Cost Estimates of DWI Crashes, 2006



DWI Cost estimates based on FHWA economic loss formulae
 Population estimates are from July 2006
 New Mexico's cost estimate is \$649 Per capita