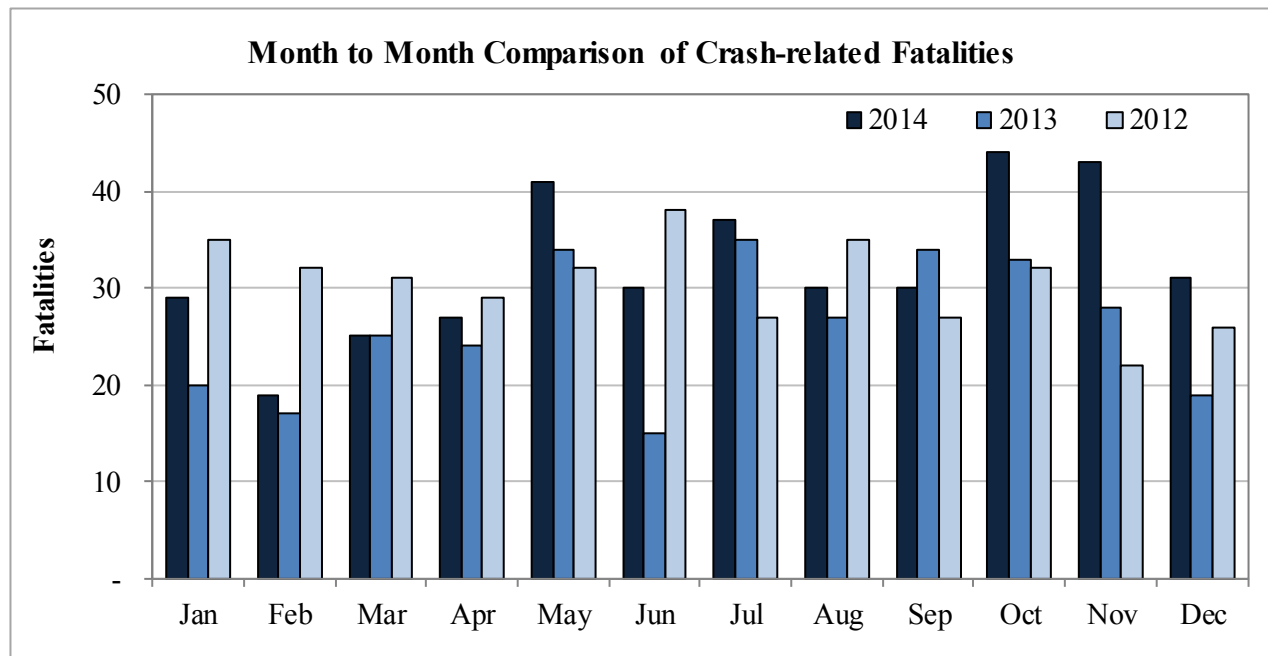


## New Mexico Monthly Traffic Fatality Report, 2014

Produced for the New Mexico DOT - Planning and Traffic Safety Division under Contract # 5801  
by the UNM Geospatial and Population Studies Traffic Research Unit (TRU)

Fatalities by Month 2014, 2013 and 2012			
Month	2014	2013	2012
January	29	20	35
February	19	17	32
March	25	25	31
April	27	24	29
May	41	34	32
June	30	15	38
July	37	35	27
August	30	27	35
September	30	34	27
October	44	33	32
November	43	28	22
December	31	19	26
<b>Total</b>	<b>386</b>	<b>311</b>	<b>366</b>



Fatalities by Vehicle Type, 2014										
Month in 2014	Cars	Pickup Trucks	Semi Trucks	Vans, SUVs, Utility Vehicles	ATV (4W)	Motorcyclists	Pedestrians	Pedalcyclists	Vehicle Type Unknown or Other	Total Fatalities
January	11	3	-	4	-	3	8	-	-	29
February	10	5	1	-	-	-	3	-	-	19
March	9	5	1	3	-	2	5	-	-	25
April	13	1	2	1	-	4	6	-	-	27
May	20	4	1	1	1	6	7	1	-	41
June	10	2	2	2	2	7	5	-	-	30
July	11	5	2	6	2	3	8	-	-	37
August	7	1	3	6	2	5	6	-	-	30
September	6	7	2	3	-	6	4	2	-	30
October	23	9	2	2	1	4	2	1	-	44
November	16	6	2	4	1	3	11	-	-	43
December	14	4	3	1	-	-	9	-	-	31
<b>Total</b>	<b>150</b>	<b>52</b>	<b>21</b>	<b>33</b>	<b>9</b>	<b>43</b>	<b>74</b>	<b>4</b>	<b>-</b>	<b>386</b>

Fatalities by Alcohol Involvement <sup>1</sup> , 2014				
Month in 2014	Alcohol-involved <sup>1</sup>	Not Alcohol-involved	Alcohol Unknown	Total Fatalities
January	10	19	-	29
February	8	11	-	19
March	13	12	-	25
April	10	17	-	27
May	17	24	-	41
June	13	17	-	30
July	23	14	-	37
August	8	22	-	30
September	16	14	-	30
October	22	22	-	44
November	19	24	-	43
December	11	20	-	31
<b>Total</b>	<b>170</b>	<b>216</b>	<b>-</b>	<b>386</b>

<sup>1</sup> All fatalities in alcohol-involved crashes.

Alcohol-involved <sup>1</sup> Fatalities by Month			
Month	2014	2013	2012
January	10	9	18
February	8	7	13
March	13	14	21
April	10	11	11
May	17	17	14
June	13	5	16
July	23	15	9
August	8	10	12
September	16	15	11
October	22	15	11
November	19	10	5
December	11	5	12
<b>Total</b>	<b>170</b>	<b>133</b>	<b>153</b>

<sup>1</sup> All fatalities in alcohol-involved crashes.

Fatalities Under 21, 2014	
Age	Fatalities
1	1
2	1
3	1
4	1
5	1
6	-
7	2
8	-
9	2
10	-
11	1
12	1
13	1
14	1
15	-
16	1
17	9
18	6
19	11
20	14
<b>Total</b>	<b>54</b>

Month in 2014	Total Fatalities	Alcohol-involved <sup>1</sup> Fatalities, 2014			
		Motorcyclist Fatalities	Percent Motorcyclist Fatalities	Pedestrian Fatalities	Percent Pedestrian Fatalities
January	29	2	6.9%	1	3.4%
February	19	-	0.0%	1	5.3%
March	25	1	4.0%	3	12.0%
April	27	2	7.4%	2	7.4%
May	41	4	9.8%	4	9.8%
June	30	2	6.7%	4	13.3%
July	37	3	8.1%	7	18.9%
August	30	2	6.7%	3	10.0%
September	30	3	10.0%	3	10.0%
October	44	2	4.5%	1	2.3%
November	43	2	4.7%	7	16.3%
December	31	-	0.0%	6	19.4%
<b>Total</b>	<b>386</b>	<b>23</b>	<b>6.0%</b>	<b>42</b>	<b>10.9%</b>

<sup>1</sup> All fatalities in alcohol-involved crashes.

Alcohol-involved <sup>1</sup> Fatalities, 2014		
Alcohol-involved	170	44.0%
Not Alcohol-involved	216	56.0%
Alcohol Unknown	0	0.0%
<b>Total</b>	<b>386</b>	<b>100.0%</b>

<sup>1</sup> All fatalities in alcohol-involved crashes.

Motorcyclist/4W Helmet Usage, 2014	
Helmet Usage	Fatalities
Yes	8
No	44
Unknown	-
<b>Total</b>	<b>52</b>

Fatalities by Vehicle <sup>1</sup> Occupant Seat Belt Usage, 2014				
Restraint	Yes	No	Unknown	Total
Seat Belt	83	151	1	235

<sup>1</sup> Total vehicle occupant fatalities. Excludes motorcyclist, 4W/ATV, semi truck, pedestrian and pedalcyclist fatalities.

Senior (65+) Fatalities	
Year	Fatalities
2014	37
2013	42
2012	62

Fatalities by Residency and Location, 2014				
Location	New Mexico Resident	Non-Resident	Unknown Residency	Total
Rural	164	63	4	231
Urban	146	7	2	155
Unknown	-	-	-	-
<b>Total</b>	<b>310</b>	<b>70</b>	<b>6</b>	<b>386</b>

Month to Month Comparison of Fatalities by Alcohol Involvement, 2014, 2013 and 2012												
Month	2014 Fatalities				2013 Fatalities				2012 Fatalities			
	Alcohol-involved <sup>1</sup>			Total	Alcohol-involved <sup>1</sup>			Total	Alcohol-involved <sup>1</sup>			Total
	Yes	No	Unk		Yes	No	Unk		Yes	No	Unk	
January	10	19	-	29	9	11	-	20	18	17	-	35
February	8	11	-	19	7	10	-	17	13	19	-	32
March	13	12	-	25	14	11	-	25	21	10	-	31
April	10	17	-	27	11	13	-	24	11	18	-	29
May	17	24	-	41	17	17	-	34	14	18	-	32
June	13	17	-	30	5	10	-	15	16	22	-	38
July	23	14	-	37	15	20	-	35	9	18	-	27
August	8	22	-	30	10	17	-	27	12	23	-	35
September	16	14	-	30	15	19	-	34	11	16	-	27
October	22	22	-	44	15	18	-	33	11	21	-	32
November	19	24	-	43	10	18	-	28	5	17	-	22
December	11	20	-	31	5	14	-	19	12	14	-	26
<b>Total</b>	<b>170</b>	<b>216</b>	<b>-</b>	<b>386</b>	<b>133</b>	<b>178</b>	<b>-</b>	<b>311</b>	<b>153</b>	<b>213</b>	<b>-</b>	<b>366</b>

<sup>1</sup> Identifies whether the fatality resulted from an alcohol-involved crash.

Month to Month Comparison of Fatalities by Seat Belt Usage, 2014, 2013 and 2012												
Month	2014 Fatalities				2013 Fatalities				2012 Fatalities			
	Seat Belt <sup>1</sup>			Total <sup>2</sup>	Seat Belt <sup>1</sup>			Total <sup>2</sup>	Seat Belt <sup>1</sup>			Total <sup>2</sup>
	Yes	No	Unk		Yes	No	Unk		Yes	No	Unk	
January	8	10	-	18	2	8	-	10	8	18	-	26
February	6	9	-	15	3	7	-	10	7	11	-	18
March	4	13	-	17	7	8	2	17	8	11	-	19
April	2	13	-	15	6	14	-	20	9	10	-	19
May	8	17	-	25	10	8	-	18	2	16	-	18
June	4	10	-	14	1	8	-	9	10	14	-	24
July	10	12	-	22	6	15	-	21	7	7	-	14
August	6	8	-	14	3	13	-	16	5	15	-	20
September	6	10	-	16	3	19	-	22	5	7	-	12
October	14	20	-	34	12	6	-	18	9	11	-	20
November	7	19	-	26	7	13	-	20	8	9	-	17
December	8	10	1	19	-	11	-	11	4	9	-	13
<b>Total</b>	<b>83</b>	<b>151</b>	<b>1</b>	<b>235</b>	<b>60</b>	<b>130</b>	<b>2</b>	<b>192</b>	<b>82</b>	<b>138</b>	<b>-</b>	<b>220</b>

<sup>1</sup> Identifies whether a vehicle occupant was belted (Yes), unbelted (No), or belt usage was not reported (Unk).

<sup>2</sup> Total vehicle occupant fatalities. Excludes motorcyclist, 4W/ATV, semi truck, pedestrian and pedalcyclist fatalities.

**Fatalities by County and Month, 2014**

County	Jan.	Feb.	Mar.	Apr.	May	Jun.	Jul.	Aug.	Sep.	Oct.	Nov.	Dec.	2014 Total	2013 Total
Bernalillo	4	1	6	4	7	6	8	7	4	7	10	5	69	50
Catron	-	-	-	-	1	-	-	-	-	-	-	-	1	6
Chaves	-	-	2	-	-	1	-	-	1	-	-	3	7	9
Cibola	-	-	-	-	1	-	1	3	1	-	1	-	7	16
Colfax	1	-	-	1	2	1	-	1	1	-	-	-	7	6
Curry	-	-	-	-	-	-	1	-	1	1	1	-	4	4
De Baca	-	-	-	-	-	-	-	-	-	-	-	-	-	2
Doña Ana	-	1	1	3	-	1	-	3	1	6	1	2	19	14
Eddy	2	1	1	6	2	-	-	-	-	4	-	-	16	15
Grant	1	-	1	-	-	-	-	-	-	-	-	-	2	5
Guadalupe	2	1	2	-	-	-	1	-	1	-	-	-	7	6
Harding	-	-	-	1	-	-	-	-	1	-	-	-	2	1
Hidalgo	2	-	-	-	7	-	-	-	-	-	-	-	9	1
Lea	1	2	2	1	2	2	3	3	3	7	1	4	31	12
Lincoln	-	-	-	1	-	-	3	-	-	-	-	1	5	5
Los Alamos	-	-	-	-	-	-	1	-	-	-	1	-	2	-
Luna	-	1	-	-	-	-	-	-	-	-	-	-	1	6
McKinley	4	3	4	3	6	1	1	3	3	6	8	6	48	26
Mora	1	-	-	-	-	-	2	-	1	-	-	-	4	3
Otero	3	-	2	1	1	3	1	-	1	1	-	-	13	8
Quay	-	2	-	-	-	-	4	-	-	1	3	1	11	6
Rio Arriba	-	-	-	1	1	4	1	-	-	1	1	-	9	13
Roosevelt	-	-	1	-	-	-	-	-	-	-	-	1	2	4
San Juan	2	2	-	2	3	4	4	5	8	3	4	2	39	27
San Miguel	-	-	-	-	-	-	-	1	1	1	-	-	3	7
Sandoval	-	1	-	-	1	3	-	-	-	1	5	3	14	18
Santa Fe	2	2	1	1	1	3	2	1	-	1	2	2	18	8
Sierra	-	-	-	-	1	-	1	-	-	-	-	-	2	4
Socorro	1	1	1	-	1	-	-	-	-	2	2	-	8	9
Taos	2	-	1	1	-	1	1	1	2	1	-	-	10	6
Torrance	-	-	-	-	1	-	2	-	-	1	-	1	5	11
Union	-	1	-	-	-	-	-	-	-	-	-	-	1	1
Valencia	1	-	-	1	3	-	-	2	-	-	3	-	10	2
<b>Total</b>	<b>29</b>	<b>19</b>	<b>25</b>	<b>27</b>	<b>41</b>	<b>30</b>	<b>37</b>	<b>30</b>	<b>30</b>	<b>44</b>	<b>43</b>	<b>31</b>	<b>386</b>	<b>311</b>

Fatalities by County Relating to Alcohol, Belt Use, and Under 21 BAC, 2014							
County	Alcohol-involved Fatalities <sup>1</sup>		Unbelted Fatalities		Under 21 (15-20) with a BAC <sup>2</sup>		Total Fatalities
	Count	Percent <sup>3</sup>	Count	Percent <sup>3</sup>	Count	Percent <sup>3</sup>	
Bernalillo	35	50.7%	18	26.1%	4	5.8%	69
Catron	1	100.0%	1	100.0%	-	0.0%	1
Chaves	4	57.1%	5	71.4%	-	0.0%	7
Cibola	1	14.3%	1	14.3%	-	0.0%	7
Colfax	3	42.9%	5	71.4%	-	0.0%	7
Curry	1	25.0%	2	50.0%	-	0.0%	4
De Baca	-	-	-	-	-	-	-
Doña Ana	11	57.9%	8	42.1%	1	5.3%	19
Eddy	2	12.5%	7	43.8%	-	0.0%	16
Grant	-	0.0%	2	100.0%	-	0.0%	2
Guadalupe	1	14.3%	2	28.6%	-	0.0%	7
Harding	-	0.0%	-	0.0%	-	0.0%	2
Hidalgo	-	0.0%	7	77.8%	-	0.0%	9
Lea	9	29.0%	7	22.6%	-	0.0%	31
Lincoln	3	60.0%	2	40.0%	-	0.0%	5
Los Alamos	-	0.0%	-	0.0%	-	0.0%	2
Luna	-	0.0%	-	0.0%	-	0.0%	1
McKinley	30	62.5%	24	50.0%	2	4.2%	48
Mora	2	50.0%	3	75.0%	2	50.0%	4
Otero	9	69.2%	4	30.8%	2	15.4%	13
Quay	2	18.2%	4	36.4%	1	9.1%	11
Rio Arriba	4	44.4%	6	66.7%	-	0.0%	9
Roosevelt	1	50.0%	2	100.0%	-	0.0%	2
San Juan	18	46.2%	12	30.8%	2	5.1%	39
San Miguel	2	66.7%	3	100.0%	-	0.0%	3
Sandoval	4	28.6%	6	42.9%	-	0.0%	14
Santa Fe	7	38.9%	4	22.2%	-	0.0%	18
Sierra	2	100.0%	1	50.0%	-	0.0%	2
Socorro	1	12.5%	5	62.5%	-	0.0%	8
Taos	6	60.0%	4	40.0%	1	10.0%	10
Torrance	3	60.0%	1	20.0%	-	0.0%	5
Union	1	100.0%	1	100.0%	-	0.0%	1
Valencia	7	70.0%	4	40.0%	-	0.0%	10
<b>Total</b>	<b>170</b>	<b>44.0%</b>	<b>151</b>	<b>39.1%</b>	<b>15</b>	<b>3.9%</b>	<b>386</b>

<sup>1</sup> All fatalities in alcohol-involved crashes.

<sup>2</sup> Fatalities under 21 with a reported BAC (Blood Alcohol Content) above zero.

<sup>3</sup> Percentage based on total fatalities in the county.

Fatalities by Maintenance District and Month, 2014													
District	Jan.	Feb.	Mar.	Apr.	May	Jun.	Jul.	Aug.	Sep.	Oct.	Nov.	Dec.	Total
District 1	4	3	3	3	9	1	1	3	1	8	3	2	41
District 2	6	3	8	9	5	6	8	3	6	13	2	9	78
District 3	5	2	6	5	11	9	8	9	4	8	17	8	92
District 4	4	4	2	2	2	1	7	2	5	2	3	1	35
District 5	6	4	2	5	6	12	11	7	10	7	8	5	83
District 6	4	3	4	3	8	1	2	6	4	6	10	6	57
<b>Total</b>	<b>29</b>	<b>19</b>	<b>25</b>	<b>27</b>	<b>41</b>	<b>30</b>	<b>37</b>	<b>30</b>	<b>30</b>	<b>44</b>	<b>43</b>	<b>31</b>	<b>386</b>

Fatalities by Maintenance District Relating to Alcohol, Belt Use, and Under 21 BAC, 2014							
District	Alcohol-involved Fatalities <sup>1</sup>		Unbelted Fatalities		Under 21 (15-20) Fatalities with a BAC <sup>2</sup>		Total Fatalities
	Count	Percent <sup>3</sup>	Count	Percent <sup>3</sup>	Count	Percent <sup>3</sup>	
District 1	14	34.1%	23	56.1%	1	2.4%	41
District 2	29	37.2%	29	37.2%	2	2.6%	78
District 3	45	48.9%	28	30.4%	4	4.3%	92
District 4	11	31.4%	18	51.4%	3	8.6%	35
District 5	38	45.8%	27	32.5%	3	3.6%	83
District 6	33	57.9%	26	45.6%	2	3.5%	57
<b>Total</b>	<b>170</b>	<b>44.0%</b>	<b>151</b>	<b>39.1%</b>	<b>15</b>	<b>3.9%</b>	<b>386</b>

<sup>1</sup> All fatalities in alcohol-involved crashes.

<sup>2</sup> Fatalities under 21 with a reported BAC (Blood Alcohol Content) above zero.

<sup>3</sup> Percentage based on total fatalities in the district