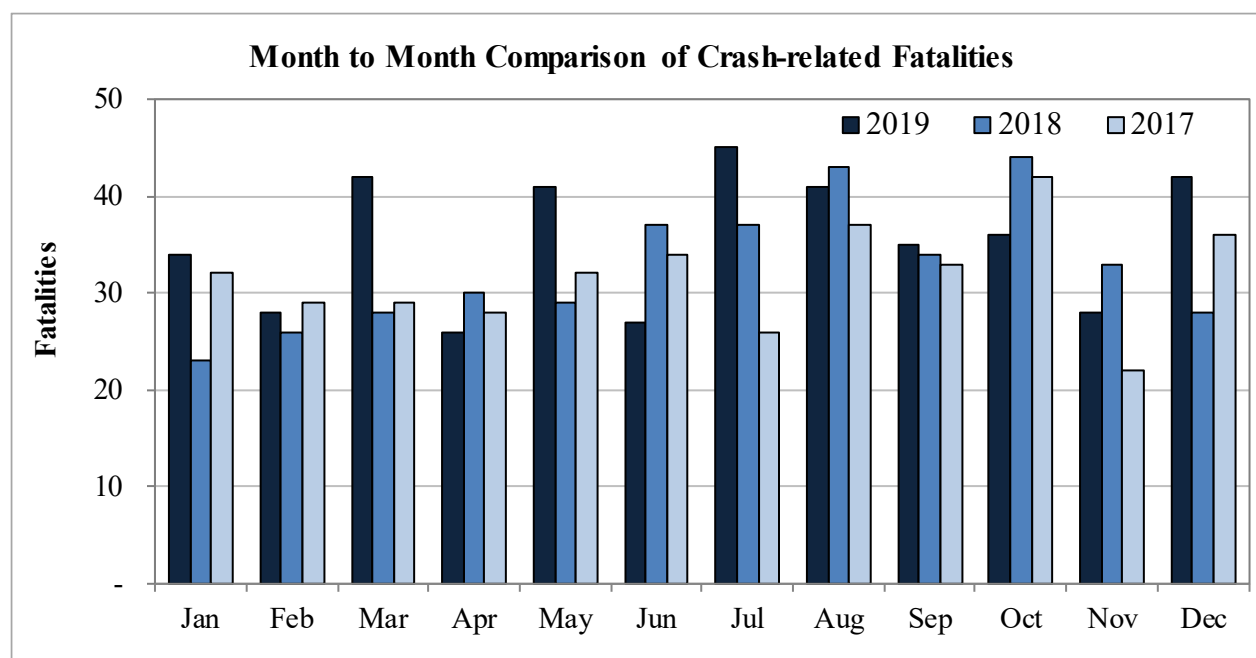


New Mexico Monthly Traffic Fatality Report, 2019

Produced for the New Mexico Department of Transportation, Traffic Safety Division, Traffic Records Bureau,
Under Contract No. 6093 by UNM Geospatial and Population Studies, Traffic Research Unit (TRU)

Fatalities by Month 2019, 2018, and 2017			
Month	2019	2018	2017
January	34	23	32
February	28	26	29
March	42	28	29
April	26	30	28
May	41	29	32
June	27	37	34
July	45	37	26
August	41	43	37
September	35	34	33
October	36	44	42
November	28	33	22
December	42	28	36
Total	425	392	380



Fatalities by Vehicle Type, 2019										
Month in 2019	Cars	Pickup Trucks	Semi Trucks, Buses	Vans, SUVs, Utility Vehicles	ATV (4W)	Motorcyclists	Pedestrians	Pedalcyclists	Vehicle Type Unknown or Other	Total Fatalities
January	7	7	3	2	-	1	14	-	-	34
February	9	6	-	5	-	1	6	1	-	28
March	12	5	3	6	2	7	6	1	-	42
April	8	5	-	5	-	3	4	1	-	26
May	10	5	1	8	-	9	5	3	-	41
June	3	4	2	9	-	2	7	-	-	27
July	8	14	4	5	-	4	10	-	-	45
August	10	6	1	14	1	3	5	1	-	41
September	12	5	-	5	-	8	3	2	-	35
October	10	2	2	5	1	10	6	-	-	36
November	8	4	2	2	-	5	7	-	-	28
December	15	10	1	4	-	2	10	-	-	42
Total	112	73	19	70	4	55	83	9	-	425

Fatalities by Alcohol Involvement ¹ , 2019				
Month in 2019	Alcohol-involved ¹	Not Alcohol-involved	Alcohol Unknown	Total Fatalities
January	17	17	-	34
February	9	19	-	28
March	13	29	-	42
April	8	18	-	26
May	19	22	-	41
June	10	17	-	27
July	21	24	-	45
August	20	21	-	41
September	14	21	-	35
October	11	25	-	36
November	12	16	-	28
December	21	21	-	42
Total	175	250	-	425

¹ All fatalities in alcohol-involved crashes.

Alcohol-involved ¹ Fatalities			
Month	2019	2018	2017
January	17	10	15
February	9	10	14
March	13	10	12
April	8	15	15
May	19	11	13
June	10	16	7
July	21	17	9
August	20	10	9
September	14	12	12
October	11	15	20
November	12	13	9
December	21	13	12
Total	175	152	147

¹ All fatalities in alcohol-involved crashes.

Fatalities Under 21, 2019	
Age	Fatalities
1	1
2	-
3	2
4	1
5	2
6	1
7	1
8	-
9	3
10	-
11	1
12	-
13	-
14	-
15	3
16	3
17	5
18	7
19	5
20	8
Total	43

Month in 2019	Total Fatalities, 2019	Alcohol-involved ¹ Fatalities, 2019			
		Motorcyclist Fatalities	Percent Motorcyclist Fatalities	Pedestrian Fatalities	Percent Pedestrian Fatalities
January	34	1	2.9%	9	26.5%
February	28	-	0.0%	3	10.7%
March	42	5	11.9%	2	4.8%
April	26	1	3.8%	3	11.5%
May	41	2	4.9%	5	12.2%
June	27	-	0.0%	4	14.8%
July	45	1	2.2%	7	15.6%
August	41	1	2.4%	3	7.3%
September	35	4	11.4%	2	5.7%
October	36	3	8.3%	3	8.3%
November	28	2	7.1%	5	17.9%
December	42	-	0.0%	3	7.1%
Total	425	20	4.7%	49	11.5%

¹ All fatalities in alcohol-involved crashes.

Alcohol-involved ¹ Fatalities, 2019		
Alcohol-involved	175	41.2%
Not Alcohol-involved	250	58.8%
Alcohol Unknown	0	0.0%
Total	425	100%

¹ All fatalities in alcohol-involved crashes.

Motorcyclist/4W Helmet Usage, 2019	
Helmet Usage	Fatalities
Yes	18
No	41
Unknown	-
Total	59

Fatalities by Vehicle ¹ Occupant Seat Belt Usage, 2019				
Restraint	Yes	No	Unknown	Total
Seat Belt	114	141	-	255

¹ Total vehicle occupant fatalities. Excludes motorcyclist, 4W/ATV, semi truck, pedestrian and pedalcyclist fatalities.

Senior (65+) Fatalities	
Year	Fatalities
2019	57
2018	61
2017	57

Fatalities by Residency and Location, 2019				
Location	New Mexico Resident	Non-Resident	Unknown Residency	Total
Rural	149	100	2	251
Urban	155	17	2	174
Unknown	-	-	-	-
Total	304	117	4	425

Month to Month Comparison of Fatalities by Alcohol Involvement												
Month	2019 Fatalities				2018 Fatalities				2017 Fatalities			
	Alcohol-involved ¹			Total	Alcohol-involved ¹			Total	Alcohol-involved ¹			Total
	Yes	No	Unk		Yes	No	Unk		Yes	No	Unk	
January	17	17	-	34	10	13	-	23	15	17	-	32
February	9	19	-	28	10	16	-	26	14	15	-	29
March	13	29	-	42	10	18	-	28	12	17	-	29
April	8	18	-	26	15	15	-	30	15	13	-	28
May	19	22	-	41	11	18	-	29	13	19	-	32
June	10	17	-	27	16	21	-	37	7	27	-	34
July	21	24	-	45	17	20	-	37	9	17	-	26
August	20	21	-	41	10	33	-	43	9	28	-	37
September	14	21	-	35	12	22	-	34	12	21	-	33
October	11	25	-	36	15	29	-	44	20	22	-	42
November	12	16	-	28	13	20	-	33	9	13	-	22
December	21	21	-	42	13	15	-	28	12	24	-	36
Total	175	250	-	425	152	240	-	392	147	233	-	380

¹ Identifies whether the fatality resulted from an alcohol-involved crash.

Month to Month Comparison of Fatalities by Seat Belt Usage												
Month	2019 Fatalities				2018 Fatalities				2017 Fatalities			
	Seat Belt ¹			Total ²	Seat Belt ¹			Total ²	Seat Belt ¹			Total ²
	Yes	No	Unk		Yes	No	Unk		Yes	No	Unk	
January	8	8	-	16	6	11	-	17	8	14	-	22
February	5	15	-	20	6	12	-	18	7	8	-	15
March	9	14	-	23	7	6	-	13	12	9	-	21
April	11	7	-	18	5	12	-	17	8	9	-	17
May	10	13	-	23	5	10	-	15	12	15	-	27
June	11	5	-	16	13	12	-	25	11	10	-	21
July	15	12	-	27	8	11	-	19	5	8	1	14
August	9	21	-	30	13	11	-	24	10	9	1	20
September	10	12	-	22	8	11	-	19	9	11	-	20
October	10	7	-	17	9	17	-	26	11	11	-	22
November	6	8	-	14	12	8	-	20	5	6	-	11
December	10	19	-	29	3	14	-	17	11	10	-	21
Total	114	141	-	255	95	135	-	230	109	120	2	231

¹ Identifies whether a vehicle occupant was belted (Yes), unbelted (No), or belt usage was not reported (Unk).

² Total vehicle occupant fatalities. Excludes motorcyclist, 4W/ATV, semi truck, pedestrian and pedalcyclist fatalities.

Fatalities by County and Month, 2019														
County	Jan.	Feb.	Mar.	Apr.	May	Jun.	Jul.	Aug.	Sep.	Oct.	Nov.	Dec.	2019 Total	2018 Total
Bernalillo	13	8	14	4	13	6	6	7	3	12	9	9	104	94
Catron	-	-	-	-	-	-	-	-	-	-	-	-	-	6
Chaves	1	-	1	1	2	-	-	-	-	1	3	1	10	15
Cibola	1	2	1	1	1	-	-	1	5	2	2	-	16	6
Colfax	-	-	1	-	-	2	1	-	1	-	-	-	5	5
Curry	1	-	-	-	1	-	2	1	-	2	-	1	8	7
De Baca	-	-	-	-	-	-	-	-	-	-	2	-	2	1
Doña Ana	3	2	3	4	2	-	4	5	2	3	1	2	31	15
Eddy	-	1	1	4	3	1	1	1	1	-	-	3	16	17
Grant	-	-	-	-	-	1	-	-	1	-	-	1	3	1
Guadalupe	-	2	-	1	-	1	-	4	-	1	1	-	10	5
Harding	-	-	-	-	-	-	-	-	-	-	-	-	-	-
Hidalgo	1	-	4	-	-	2	-	1	-	-	-	1	9	1
Lea	1	-	1	2	1	1	8	6	-	3	2	1	26	28
Lincoln	-	-	-	-	1	3	-	-	-	-	-	3	7	4
Los Alamos	-	-	-	-	-	-	-	-	-	-	-	1	1	-
Luna	4	-	2	-	2	-	1	-	1	1	-	-	11	6
McKinley	-	1	7	1	2	1	5	5	3	-	-	1	26	41
Mora	1	1	-	-	-	-	1	-	-	1	1	-	5	1
Otero	1	3	-	1	1	-	-	1	1	1	-	2	11	8
Quay	-	-	-	-	-	-	1	-	-	1	-	-	2	-
Rio Arriba	2	1	-	1	1	-	3	-	2	1	-	1	12	14
Roosevelt	-	-	-	1	-	2	-	-	-	-	-	-	3	2
San Juan	1	1	3	-	2	1	3	5	6	4	4	7	37	33
San Miguel	-	-	-	-	-	1	1	-	-	1	-	1	4	6
Sandoval	1	-	-	-	3	1	-	3	4	1	-	4	17	24
Santa Fe	-	3	1	1	2	2	2	1	1	-	2	1	16	18
Sierra	-	-	-	1	-	-	-	-	-	-	-	-	1	1
Socorro	1	1	1	3	-	-	-	-	-	-	-	-	6	2
Taos	-	-	-	-	2	1	-	-	2	-	-	-	5	9
Torrance	2	1	2	-	1	1	-	-	1	-	-	1	9	14
Union	-	-	-	-	-	-	1	-	-	-	-	-	1	1
Valencia	-	1	-	-	1	-	5	-	1	1	1	1	11	7
Total	34	28	42	26	41	27	45	41	35	36	28	42	425	392

Fatalities by County Relating to Alcohol, Belt Use, and Under 21 BAC, 2019							
County	Alcohol-involved Fatalities ¹		Unbelted Fatalities		Under 21 (15-20) with a BAC ²		Total Fatalities
	Count	Percent ³	Count	Percent ³	Count	Percent ³	
Bernalillo	48	46.2%	23	22.1%	-	0.0%	104
Catron	-	-	-	-	-	-	-
Chaves	4	40.0%	4	40.0%	-	0.0%	10
Cibola	5	31.3%	9	56.3%	-	0.0%	16
Colfax	1	20.0%	-	0.0%	-	0.0%	5
Curry	1	12.5%	1	12.5%	-	0.0%	8
De Baca	-	0.0%	2	100.0%	-	0.0%	2
Doña Ana	15	48.4%	12	38.7%	2	6.5%	31
Eddy	5	31.3%	8	50.0%	-	0.0%	16
Grant	-	0.0%	1	33.3%	-	0.0%	3
Guadalupe	-	0.0%	6	60.0%	-	0.0%	10
Harding	-	-	-	-	-	-	-
Hidalgo	-	0.0%	3	33.3%	-	0.0%	9
Lea	13	50.0%	11	42.3%	-	0.0%	26
Lincoln	5	71.4%	5	71.4%	-	0.0%	7
Los Alamos	-	0.0%	-	0.0%	-	0.0%	1
Luna	3	27.3%	6	54.5%	1	9.1%	11
McKinley	15	57.7%	7	26.9%	1	3.8%	26
Mora	1	20.0%	4	80.0%	-	0.0%	5
Otero	3	27.3%	1	9.1%	1	9.1%	11
Quay	-	0.0%	-	0.0%	-	0.0%	2
Rio Arriba	5	41.7%	3	25.0%	-	0.0%	12
Roosevelt	2	66.7%	1	33.3%	-	0.0%	3
San Juan	24	64.9%	11	29.7%	1	2.7%	37
San Miguel	2	50.0%	2	50.0%	-	0.0%	4
Sandoval	8	47.1%	3	17.6%	1	5.9%	17
Santa Fe	6	37.5%	8	50.0%	-	0.0%	16
Sierra	1	100.0%	1	100.0%	-	0.0%	1
Socorro	-	0.0%	3	50.0%	-	0.0%	6
Taos	5	100.0%	-	0.0%	-	0.0%	5
Torrance	-	0.0%	3	33.3%	-	0.0%	9
Union	-	0.0%	-	0.0%	-	0.0%	1
Valencia	3	27.3%	3	27.3%	-	0.0%	11
Total	175	41.2%	141	33.2%	7	1.6%	425

¹ All fatalities in alcohol-involved crashes.

² Fatalities under 21 with a reported BAC (Blood Alcohol Content) above zero.

³ Percentage based on total fatalities in the county.

Fatalities by Maintenance District and Month, 2019													
District	Jan.	Feb.	Mar.	Apr.	May	Jun.	Jul.	Aug.	Sep.	Oct.	Nov.	Dec.	Total
District 1	9	3	10	8	4	3	5	6	4	4	1	4	61
District 2	4	4	3	9	9	7	11	9	2	7	7	11	83
District 3	16	10	16	4	17	8	11	9	9	14	10	14	138
District 4	1	3	1	1	-	4	5	4	1	4	2	1	27
District 5	3	5	4	2	7	4	8	6	11	4	5	10	69
District 6	1	3	8	2	4	1	5	7	8	3	3	2	47
Total	34	28	42	26	41	27	45	41	35	36	28	42	425

Fatalities by Maintenance District Relating to Alcohol, Belt Use, and Under 21 BAC, 2019							
District	Alcohol-involved Fatalities ¹		Unbelted Fatalities		Under 21 (15-20) Fatalities with a BAC ²		Total Fatalities
	Count	Percent ³	Count	Percent ³	Count	Percent ³	
District 1	19	31.1%	26	42.6%	3	4.9%	61
District 2	33	39.8%	33	39.8%	1	1.2%	83
District 3	59	42.8%	32	23.2%	1	0.7%	138
District 4	4	14.8%	12	44.4%	-	0.0%	27
District 5	38	55.1%	21	30.4%	-	0.0%	69
District 6	22	46.8%	17	36.2%	2	4.3%	47
Total	175	41.2%	141	33.2%	7	1.6%	425

¹ All fatalities in alcohol-involved crashes.

² Fatalities under 21 with a reported BAC (Blood Alcohol Content) above zero.

³ Percentage based on total fatalities in the district