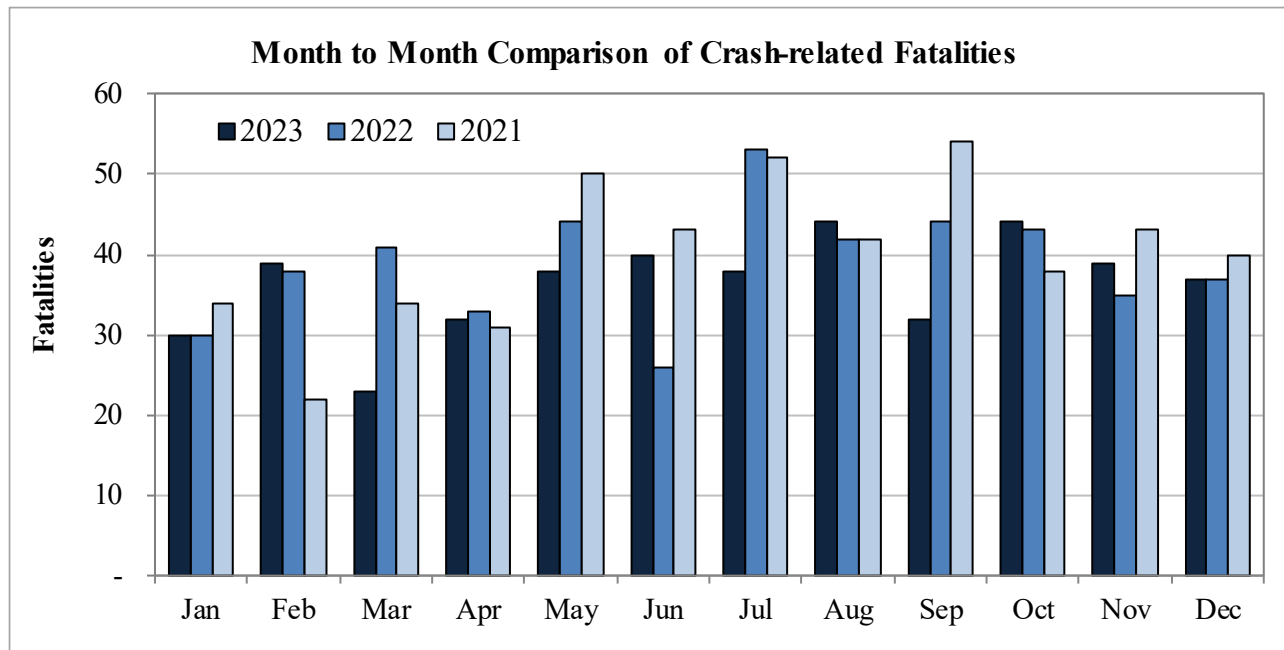


New Mexico Monthly Traffic Fatality Report, 2023

Produced for the New Mexico Department of Transportation, Traffic Safety Division, Traffic Records Bureau,
Under Contract No. 6380 by UNM Geospatial and Population Studies, Traffic Research Unit (TRU)

Fatalities by Month 2023, 2022, 2021 Year to Date			
Month	2023	2022	2021
January	30	30	34
February	39	38	22
March	23	41	34
April	32	33	31
May	38	44	50
June	40	26	43
July	38	53	52
August	44	42	42
September	32	44	54
October	44	43	38
November	39	35	43
December	37	37	40
Total	436	466	483



Fatalities by Vehicle Type, 2023 to Date										
Month in 2023	Cars	Pickup Trucks	Semi Trucks, Buses	Vans, SUVs, Utility Vehicles	ATV (4W)	Motorcyclists	Pedestrians	Pedalcyclists	Vehicle Type Unknown or Other	Total Fatalities
January	13	5	1	1	-	3	6	-	1	30
February	8	6	2	3	-	4	16	-	-	39
March	6	2	2	2	-	2	9	-	-	23
April	3	8	1	12	-	4	4	-	-	32
May	6	9	2	6	-	7	7	1	-	38
June	9	7	2	7	-	6	6	3	-	40
July	8	2	2	8	-	7	8	3	-	38
August	9	4	4	11	-	6	9	1	-	44
September	5	1	3	5	-	7	10	1	-	32
October	11	5	4	7	-	3	13	1	-	44
November	6	8	2	8	-	4	10	1	-	39
December	8	6	-	10	-	2	10	1	-	37
Total	92	63	25	80	-	55	108	12	1	436

Fatalities by Alcohol Involvement ¹ , 2023 to Date				
Month in 2023	Alcohol-involved ¹	Not Alcohol-involved	Alcohol Unknown	Total Fatalities
January	8	22	-	30
February	14	25	-	39
March	8	15	-	23
April	13	19	-	32
May	17	21	-	38
June	13	27	-	40
July	13	25	-	38
August	17	27	-	44
September	10	22	-	32
October	13	31	-	44
November	11	28	-	39
December	16	21	-	37
Total	153	283	-	436

¹ All fatalities in alcohol-involved crashes.

Alcohol-involved Fatalities ¹ , 2023 to Date			
Month	2023	2022	2021
January	8	12	13
February	14	16	11
March	8	20	17
April	13	13	12
May	17	15	17
June	13	9	10
July	13	16	19
August	17	17	14
September	10	14	23
October	13	17	9
November	11	9	19
December	16	18	14
Total	153	176	178

¹ All fatalities in alcohol-involved crashes.

Fatalities Under 21, 2023 to Date	
Age	Fatalities
1	2
2	1
3	-
4	1
5	-
6	-
7	1
8	-
9	-
10	-
11	-
12	-
13	-
14	2
15	-
16	4
17	3
18	7
19	9
20	10
Total	40

Month in 2023	Total Fatalities, 2023 to Date	Alcohol-involved Fatalities ¹ , 2023 to Date			
		Motorcyclist Fatalities	Percent Motorcyclist Fatalities	Pedestrian Fatalities	Percent Pedestrian Fatalities
January	30	-	0.0%	4	13.3%
February	39	-	0.0%	8	20.5%
March	23	-	0.0%	5	21.7%
April	32	2	6.3%	1	3.1%
May	38	1	2.6%	4	10.5%
June	40	1	2.5%	3	7.5%
July	38	-	0.0%	6	15.8%
August	44	3	6.8%	7	15.9%
September	32	2	6.3%	2	6.3%
October	44	1	2.3%	4	9.1%
November	39	1	2.6%	3	7.7%
December	37	1	2.7%	3	8.1%
Total	436	12	2.8%	50	11.5%

¹ All fatalities in alcohol-involved crashes.

Alcohol-involved Fatalities ¹ , 2023 to Date		
Alcohol-involved	153	35%
Not Alcohol-involved	283	65%
Alcohol Unknown	-	-
Total	436	100%

¹ All fatalities in alcohol-involved crashes.

Motorcyclist Helmet Usage ¹ , 2023 to Date	
Helmet Usage	Fatalities
Yes	27
No	28
Unknown	-
Total	55

¹ Excludes 4W/ATV.

Fatalities by Vehicle ¹ Occupant Seat Belt Usage, 2023 to Date				
Restraint	Yes	No	Unknown	Total
Seat Belt	83	151	1	235

¹ Total vehicle occupant fatalities. Excludes motorcyclist, 4W/ATV, semi truck, pedestrian and pedalcyclist fatalities.

Senior (65+) Fatalities, 2023 to Date	
Year	Fatalities
2023	74
2022	68
2021	60

Fatalities by Residency and Location, 2023 to Date				
Location	New Mexico Resident	Non-Resident	Unknown Residency	Total
Rural	182	49	1	232
Urban	190	13	1	204
Unknown	-	-	-	-
Total	372	62	2	436

Month to Month Comparison of Fatalities by Alcohol Involvement, 2023 to Date												
Month	2023 Fatalities				2022 Fatalities				2021 Fatalities			
	Alcohol-involved ¹			Total	Alcohol-involved ¹			Total	Alcohol-involved ¹			Total
	Yes	No	Unk		Yes	No	Unk		Yes	No	Unk	
January	8	22	-	30	12	18	-	30	13	21	-	34
February	14	25	-	39	16	22	-	38	11	11	-	22
March	8	15	-	23	20	21	-	41	17	17	-	34
April	13	19	-	32	13	20	-	33	12	19	-	31
May	17	21	-	38	15	29	-	44	17	33	-	50
June	13	27	-	40	9	17	-	26	10	33	-	43
July	13	25	-	38	16	37	-	53	19	33	-	52
August	17	27	-	44	17	25	-	42	14	28	-	42
September	10	22	-	32	14	30	-	44	23	31	-	54
October	13	31	-	44	17	26	-	43	9	29	-	38
November	11	28	-	39	9	26	-	35	19	24	-	43
December	16	21	-	37	18	19	-	37	14	26	-	40
Total	153	283	-	436	176	290	-	466	178	305	-	483

¹ Identifies whether the fatality resulted from an alcohol-involved crash.

Month to Month Comparison of Fatalities by Seat Belt Usage, 2023 to Date												
Month	2023 Fatalities				2022 Fatalities				2021 Fatalities			
	Seat Belt ¹			Total ²	Seat Belt ¹			Total ²	Seat Belt ¹			Total ²
	Yes	No	Unk		Yes	No	Unk		Yes	No	Unk	
January	8	11	-	19	4	12	-	16	10	13	-	23
February	6	11	-	17	9	13	-	22	2	10	-	12
March	5	4	1	10	12	15	-	27	8	14	-	22
April	8	15	-	23	11	15	-	26	12	9	-	21
May	3	18	-	21	5	21	-	26	12	21	-	33
June	8	15	-	23	7	7	-	14	11	14	-	25
July	8	10	-	18	14	26	-	40	10	23	-	33
August	11	13	-	24	6	19	-	25	4	18	-	22
September	1	10	-	11	10	15	-	25	10	20	-	30
October	7	16	-	23	8	13	-	21	11	12	-	23
November	9	13	-	22	11	9	-	20	5	14	-	19
December	9	15	-	24	9	15	-	24	8	16	-	24
Total	83	151	1	235	106	180	-	286	103	184	-	287

¹ Identifies whether a vehicle occupant was belted (Yes), unbelted (No), or belt usage was not reported (Unk).

² Total vehicle occupant fatalities. Excludes motorcyclist, 4W/ATV, semi truck, pedestrian and pedalcyclist fatalities.

Fatalities by County and Month, 2023 To Date														
County	Jan.	Feb.	Mar.	Apr.	May	Jun.	Jul.	Aug.	Sep.	Oct.	Nov.	Dec.	2023 Total, to Date	2022 Total, to Date
Bernalillo	9	11	8	10	6	9	12	13	11	11	7	7	114	109
Catron	-	-	-	-	-	-	-	-	1	-	1	-	2	4
Chaves	-	1	-	-	1	1	1	1	1	1	1	-	8	15
Cibola	1	2	-	1	-	2	3	1	1	4	1	-	16	16
Colfax	-	-	-	-	2	1	-	1	-	-	-	1	5	3
Curry	-	-	1	-	1	-	-	-	1	-	2	2	7	6
De Baca	-	-	-	-	-	-	-	-	-	-	-	-	-	-
Doña Ana	6	4	-	1	2	3	2	2	2	4	3	3	32	29
Eddy	1	-	1	1	4	-	3	3	1	-	4	-	18	18
Grant	-	-	1	3	-	1	-	-	1	-	-	-	6	3
Guadalupe	-	-	-	-	-	-	1	2	-	1	1	2	7	12
Harding	-	1	-	-	1	-	-	-	-	-	-	-	2	-
Hidalgo	-	-	1	-	-	-	-	-	-	-	1	-	2	2
Lea	2	3	-	-	2	1	1	2	-	3	1	3	18	21
Lincoln	-	-	-	1	1	3	1	2	-	1	-	1	10	2
Los Alamos	-	-	-	-	-	-	-	-	-	-	-	-	-	-
Luna	-	-	3	-	-	2	1	2	-	-	3	-	11	15
McKinley	3	3	3	4	2	3	-	3	2	2	-	4	29	34
Mora	-	-	-	-	-	2	-	3	-	-	1	-	6	10
Otero	-	2	2	-	1	-	1	1	1	2	2	1	13	11
Quay	-	-	-	-	2	-	-	-	1	1	-	1	5	11
Rio Arriba	-	-	-	-	-	2	3	-	2	3	-	5	15	14
Roosevelt	1	-	-	1	-	-	-	-	-	-	-	-	2	12
San Juan	3	3	1	-	4	-	2	2	-	-	3	2	20	19
San Miguel	1	-	-	1	3	-	1	1	1	-	-	1	9	7
Sandoval	2	1	1	-	-	3	-	1	-	2	2	1	13	21
Santa Fe	1	1	-	-	1	3	1	3	3	1	1	-	15	25
Sierra	-	-	1	4	-	-	-	-	-	-	-	-	5	2
Socorro	-	1	-	3	1	-	1	-	1	5	-	-	12	14
Taos	-	-	-	1	1	-	-	-	1	-	-	1	4	8
Torrance	-	2	-	-	-	1	4	1	-	2	4	1	15	9
Union	-	-	-	-	-	-	-	-	-	-	-	1	1	2
Valencia	-	4	-	1	3	3	-	-	1	1	1	-	14	12
Total	30	39	23	32	38	40	38	44	32	44	39	37	436	466

Fatalities by County Relating to Alcohol, Belt Use, and Under 21 BAC, 2023 to Date							
County	Alcohol-involved Fatalities ¹		Unbelted Fatalities		Under 21 (15-20) with a BAC ²		Total Fatalities
	Count	Percent ³	Count	Percent ³	Count	Percent ³	
Bernalillo	46	40.4%	27	23.7%	2	1.8%	114
Catron	1	50.0%	1	50.0%	-	0.0%	2
Chaves	5	62.5%	4	50.0%	-	0.0%	8
Cibola	1	6.3%	1	6.3%	-	0.0%	16
Colfax	2	40.0%	3	60.0%	1	20.0%	5
Curry	2	28.6%	1	14.3%	-	0.0%	7
De Baca	-	-	-	-	-	-	-
Doña Ana	7	21.9%	11	34.4%	-	0.0%	32
Eddy	7	38.9%	8	44.4%	-	0.0%	18
Grant	3	50.0%	2	33.3%	-	0.0%	6
Guadalupe	-	0.0%	2	28.6%	-	0.0%	7
Harding	2	100.0%	2	100.0%	-	0.0%	2
Hidalgo	-	0.0%	1	50.0%	-	0.0%	2
Lea	3	16.7%	5	27.8%	-	0.0%	18
Lincoln	3	30.0%	7	70.0%	-	0.0%	10
Los Alamos	-	-	-	-	-	-	-
Luna	2	18.2%	4	36.4%	-	0.0%	11
McKinley	15	51.7%	12	41.4%	-	0.0%	29
Mora	1	16.7%	4	66.7%	-	0.0%	6
Otero	2	15.4%	3	23.1%	-	0.0%	13
Quay	1	20.0%	2	40.0%	-	0.0%	5
Rio Arriba	9	60.0%	7	46.7%	3	20.0%	15
Roosevelt	1	50.0%	-	0.0%	-	0.0%	2
San Juan	9	45.0%	6	30.0%	-	0.0%	20
San Miguel	5	55.6%	5	55.6%	1	11.1%	9
Sandoval	6	46.2%	4	30.8%	-	0.0%	13
Santa Fe	7	46.7%	4	26.7%	-	0.0%	15
Sierra	1	20.0%	5	100.0%	-	0.0%	5
Socorro	4	33.3%	6	50.0%	2	16.7%	12
Taos	2	50.0%	3	75.0%	-	0.0%	4
Torrance	2	13.3%	5	33.3%	-	0.0%	15
Union	-	0.0%	1	100.0%	-	0.0%	1
Valencia	4	28.6%	5	35.7%	-	0.0%	14
Total	153	35.1%	151	34.6%	9	2.1%	436

¹ All fatalities in alcohol-involved crashes.

² Fatalities under 21 with a reported BAC (Blood Alcohol Content) above zero.

³ Percentage based on total fatalities in the county.

Fatalities by County and Vehicle Type, 2023 to Date										
County	Cars	Pickup Trucks	Semi Trucks, Buses	Vans, SUVs, Utility Vehicles	ATV (4W)	Motorcyclists	Pedestrians	Pedalcyclists	Vehicle Type Unknown or Other	Total Fatalities
Bernalillo	28	4	2	10	-	14	53	3	-	114
Catron	-	1	-	-	-	1	-	-	-	2
Chaves	4	1	-	-	-	-	3	-	-	8
Cibola	5	1	6	1	-	1	1	1	-	16
Colfax	1	1	1	1	-	-	1	-	-	5
Curry	1	1	-	1	-	1	2	1	-	7
De Baca	-	-	-	-	-	-	-	-	-	-
Doña Ana	9	5	-	4	-	4	6	4	-	32
Eddy	1	6	2	3	-	4	1	1	-	18
Grant	-	3	1	1	-	-	1	-	-	6
Guadalupe	2	1	1	2	-	1	-	-	-	7
Harding	-	1	-	1	-	-	-	-	-	2
Hidalgo	-	1	-	1	-	-	-	-	-	2
Lea	3	7	-	3	-	1	4	-	-	18
Lincoln	2	1	1	4	-	2	-	-	-	10
Los Alamos	-	-	-	-	-	-	-	-	-	-
Luna	2	2	4	2	-	-	1	-	-	11
McKinley	6	9	1	7	-	-	6	-	-	29
Mora	-	2	-	3	-	1	-	-	-	6
Otero	6	-	-	1	-	4	2	-	-	13
Quay	1	-	2	2	-	-	-	-	-	5
Rio Arriba	2	2	-	5	-	2	3	1	-	15
Roosevelt	1	-	-	1	-	-	-	-	-	2
San Juan	6	1	-	2	-	4	6	-	1	20
San Miguel	1	3	-	1	-	2	1	1	-	9
Sandoval	2	2	-	2	-	2	5	-	-	13
Santa Fe	2	-	1	5	-	2	5	-	-	15
Sierra	-	1	-	4	-	-	-	-	-	5
Socorro	3	2	-	4	-	1	2	-	-	12
Taos	-	2	-	1	-	1	-	-	-	4
Torrance	3	2	3	4	-	-	3	-	-	15
Union	-	-	-	1	-	-	-	-	-	1
Valencia	1	1	-	3	-	7	2	-	-	14
Total	92	63	25	80	-	55	108	12	1	436

Motorcycle ¹ Fatalities by County and Month, 2023 to Date														
County	Jan.	Feb.	Mar.	Apr.	May	Jun.	Jul.	Aug.	Sep.	Oct.	Nov.	Dec.	2023 Total, to Date	2022 Total, to Date
Bernalillo	2	1	-	3	-	1	2	2	2	-	1	-	14	21
Catron	-	-	-	-	-	-	-	-	1	-	-	-	1	1
Chaves	-	-	-	-	-	-	-	-	-	-	-	-	-	-
Cibola	-	-	-	-	-	1	-	-	-	-	-	-	1	-
Colfax	-	-	-	-	-	-	-	-	-	-	-	-	-	-
Curry	-	-	-	-	-	-	-	-	-	-	1	-	1	1
De Baca	-	-	-	-	-	-	-	-	-	-	-	-	-	-
Doña Ana	-	-	-	-	1	-	1	-	-	1	-	1	4	5
Eddy	-	-	-	-	1	-	-	2	-	-	1	-	4	1
Grant	-	-	-	-	-	-	-	-	-	-	-	-	-	1
Guadalupe	-	-	-	-	-	-	-	1	-	-	-	-	1	-
Harding	-	-	-	-	-	-	-	-	-	-	-	-	-	-
Hidalgo	-	-	-	-	-	-	-	-	-	-	-	-	-	-
Lea	-	-	-	-	-	-	-	-	-	-	-	1	1	3
Lincoln	-	-	-	-	-	-	1	1	-	-	-	-	2	1
Los Alamos	-	-	-	-	-	-	-	-	-	-	-	-	-	-
Luna	-	-	-	-	-	-	-	-	-	-	-	-	-	2
McKinley	-	-	-	-	-	-	-	-	-	-	-	-	-	1
Mora	-	-	-	-	-	1	-	-	-	-	-	-	1	-
Otero	-	-	1	-	1	-	-	-	-	1	1	-	4	1
Quay	-	-	-	-	-	-	-	-	-	-	-	-	-	1
Rio Arriba	-	-	-	-	-	-	1	-	1	-	-	-	2	1
Roosevelt	-	-	-	-	-	-	-	-	-	-	-	-	-	1
San Juan	1	1	-	-	1	-	1	-	-	-	-	-	4	2
San Miguel	-	-	-	-	-	-	1	-	1	-	-	-	2	1
Sandoval	-	-	1	-	-	1	-	-	-	-	-	-	2	2
Santa Fe	-	-	-	-	-	1	-	-	1	-	-	-	2	5
Sierra	-	-	-	-	-	-	-	-	-	-	-	-	-	1
Socorro	-	-	-	-	-	-	-	-	-	1	-	-	1	1
Taos	-	-	-	-	1	-	-	-	-	-	-	-	1	-
Torrance	-	-	-	-	-	-	-	-	-	-	-	-	-	-
Union	-	-	-	-	-	-	-	-	-	-	-	-	-	-
Valencia	-	2	-	1	2	1	-	-	1	-	-	-	7	1
Total	3	4	2	4	7	6	7	6	7	3	4	2	55	54

¹ The term motorcycle includes motorized scooters and mopeds, but excludes 4W/ATVs.

Motorcycle ¹ Fatalities by County Relating to Alcohol, Helmet Use, and Age, 2023 to Date							
County	Alcohol-involved Fatalities ²		Unhelmeted Fatalities		Fatalities Under Age 30 (Ages 15-29)		Total Fatalities
	Count	Percent ³	Count	Percent ³	Count	Percent ³	
Bernalillo	2	14.3%	10	71.4%	2	14.3%	14
Catron	-	0.0%	-	0.0%	-	0.0%	1
Chaves	-	-	-	-	-	-	-
Cibola	-	0.0%	1	100.0%	-	0.0%	1
Colfax	-	-	-	-	-	-	-
Curry	1	100.0%	1	100.0%	-	0.0%	1
De Baca	-	-	-	-	-	-	-
Doña Ana	2	50.0%	1	25.0%	1	25.0%	4
Eddy	3	75.0%	-	0.0%	1	25.0%	4
Grant	-	-	-	-	-	-	-
Guadalupe	-	0.0%	1	100.0%	-	0.0%	1
Harding	-	-	-	-	-	-	-
Hidalgo	-	-	-	-	-	-	-
Lea	-	0.0%	-	0.0%	-	0.0%	1
Lincoln	1	50.0%	-	0.0%	-	0.0%	2
Los Alamos	-	-	-	-	-	-	-
Luna	-	-	-	-	-	-	-
McKinley	-	-	-	-	-	-	-
Mora	-	0.0%	-	0.0%	-	0.0%	1
Otero	-	0.0%	-	0.0%	-	0.0%	4
Quay	-	-	-	-	-	-	-
Rio Arriba	-	0.0%	2	100.0%	-	0.0%	2
Roosevelt	-	-	-	-	-	-	-
San Juan	1	25.0%	3	75.0%	1	25.0%	4
San Miguel	-	0.0%	-	0.0%	-	0.0%	2
Sandoval	1	50.0%	1	50.0%	1	50.0%	2
Santa Fe	1	50.0%	1	50.0%	-	0.0%	2
Sierra	-	-	-	-	-	-	-
Socorro	-	0.0%	1	100.0%	-	0.0%	1
Taos	-	0.0%	1	100.0%	-	0.0%	1
Torrance	-	-	-	-	-	-	-
Union	-	-	-	-	-	-	-
Valencia	2	28.6%	5	71.4%	1	14.3%	7
Total	14	25.5%	28	50.9%	7	12.7%	55

¹ The term motorcycle includes motorized scooters and mopeds, but excludes 4W/ATVs.

² All motorcycle fatalities in alcohol-involved crashes.

³ Percentage based on total motorcycle fatalities in the county.

Fatalities by Maintenance District and Month, 2023 to Date													
District	Jan.	Feb.	Mar.	Apr.	May	Jun.	Jul.	Aug.	Sep.	Oct.	Nov.	Dec.	Total
District 1	6	5	6	11	3	6	4	4	4	9	7	3	68
District 2	4	6	4	3	10	5	7	9	4	7	10	7	76
District 3	10	16	9	11	9	12	12	14	12	14	10	8	137
District 4	1	1	-	1	8	3	2	7	2	2	2	6	35
District 5	4	6	-	1	5	6	10	6	6	6	8	9	67
District 6	5	5	4	5	3	8	3	4	4	6	2	4	53
Total	30	39	23	32	38	40	38	44	32	44	39	37	436

Fatalities by Maintenance District Relating to Alcohol, Belt Use, and Under 21 BAC, 2023 to Date							
District	Alcohol-involved Fatalities ¹		Unbelted Fatalities		Under 21 (15-20) Fatalities with a BAC ²		Total Fatalities
	Count	Percent ³	Count	Percent ³	Count	Percent ³	
District 1	17	25.0%	29	42.6%	2	2.9%	68
District 2	23	30.3%	28	36.8%	-	0.0%	76
District 3	54	39.4%	34	24.8%	2	1.5%	137
District 4	11	31.4%	19	54.3%	2	5.7%	35
District 5	27	40.3%	23	34.3%	3	4.5%	67
District 6	21	39.6%	18	34.0%	-	0.0%	53
Total	153	35.1%	151	34.6%	9	2.1%	436

¹ All fatalities in alcohol-involved crashes.

² Fatalities under 21 with a reported BAC (Blood Alcohol Content) above zero.

³ Percentage based on total fatalities in the district