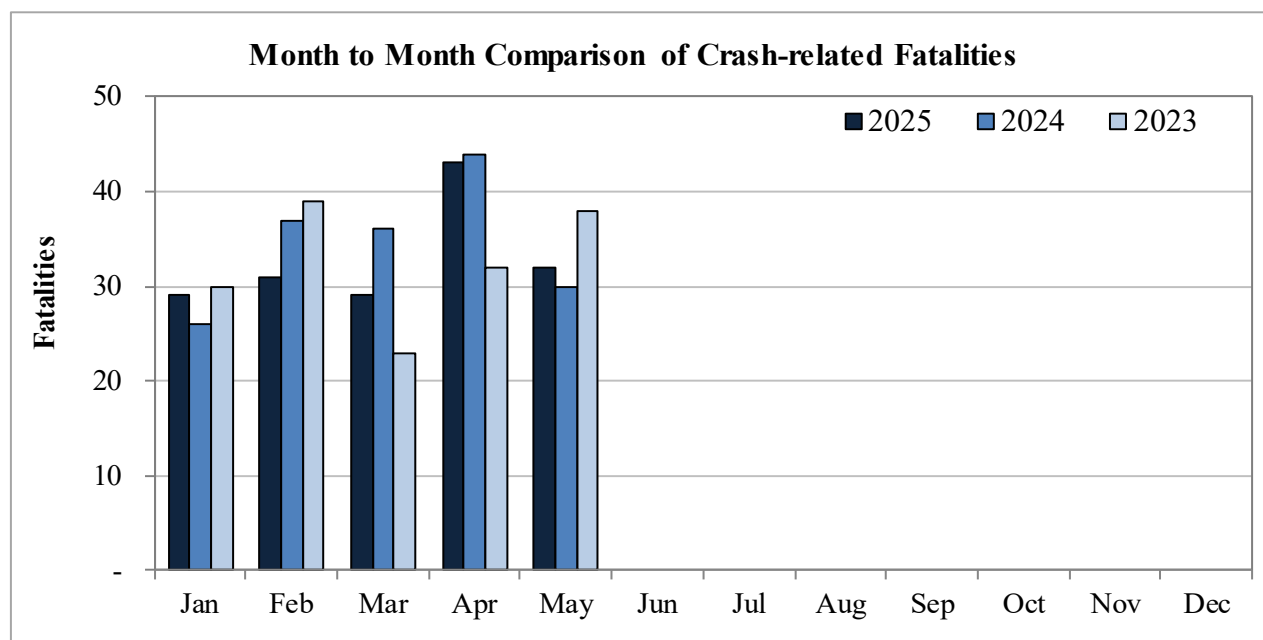


## New Mexico Monthly Traffic Fatality Report, 2025

Produced for the New Mexico Department of Transportation, Traffic Safety Division, Traffic Records Bureau,  
Under Contract No. 6380 by UNM Geospatial and Population Studies, Traffic Research Unit (TRU)

Fatalities by Month 2025, 2024, 2023 Year to Date			
Month	2025	2024	2023
January	29	26	30
February	31	37	39
March	29	36	23
April	43	44	32
May	32	30	38
June	-	-	-
July	-	-	-
August	-	-	-
September	-	-	-
October	-	-	-
November	-	-	-
December	-	-	-
Total	164	173	162



Fatalities by Vehicle Type, 2025 to Date										
Month in 2025	Cars	Pickup Trucks	Semi Trucks, Buses	Vans, SUVs, Utility Vehicles	ATV (4W)	Motorcyclists	Pedestrians	Pedalcyclists	RVs	Total Fatalities
January	9	5	1	7	-	2	3	2	-	29
February	5	6	2	5	1	3	7	2	-	31
March	6	2	1	6	1	9	4	-	-	29
April	9	5	2	10	1	9	4	3	-	43
May	10	6	1	4	-	8	3	-	-	32
June	-	-	-	-	-	-	-	-	-	-
July	-	-	-	-	-	-	-	-	-	-
August	-	-	-	-	-	-	-	-	-	-
September	-	-	-	-	-	-	-	-	-	-
October	-	-	-	-	-	-	-	-	-	-
November	-	-	-	-	-	-	-	-	-	-
December	-	-	-	-	-	-	-	-	-	-
<b>Total</b>	<b>39</b>	<b>24</b>	<b>7</b>	<b>32</b>	<b>3</b>	<b>31</b>	<b>21</b>	<b>7</b>	<b>-</b>	<b>164</b>

Fatalities by Alcohol Involvement <sup>1</sup> , 2025 to Date				
Month in 2025	Alcohol-involved <sup>1</sup>	Not Alcohol-involved	Alcohol Unknown	Total Fatalities
January	3	26	-	29
February	7	24	-	31
March	2	27	-	29
April	6	37	-	43
May	8	24	-	32
June	-	-	-	-
July	-	-	-	-
August	-	-	-	-
September	-	-	-	-
October	-	-	-	-
November	-	-	-	-
December	-	-	-	-
<b>Total</b>	<b>26</b>	<b>138</b>	<b>-</b>	<b>164</b>

<sup>1</sup> All fatalities in alcohol-involved crashes.

Alcohol-involved Fatalities <sup>1</sup> , 2025 to Date			
Month	2025	2024	2023
January	3	10	8
February	7	10	14
March	2	13	9
April	6	12	14
May	8	10	17
June	-	-	-
July	-	-	-
August	-	-	-
September	-	-	-
October	-	-	-
November	-	-	-
December	-	-	-
<b>Total</b>	<b>26</b>	<b>55</b>	<b>62</b>

<sup>1</sup> All fatalities in alcohol-involved crashes.

Fatalities Under 21, 2025 to Date	
Age	Fatalities
1	-
2	-
3	-
4	-
5	-
6	-
7	-
8	-
9	-
10	-
11	-
12	-
13	-
14	-
15	3
16	4
17	1
18	3
19	3
20	5
<b>Total</b>	<b>19</b>

Month in 2025	Total Fatalities, 2025 to Date	Alcohol-involved Fatalities <sup>1</sup> , 2025 to Date			
		Motorcyclist Fatalities	Percent Motorcyclist Fatalities	Pedestrian Fatalities	Percent Pedestrian Fatalities
January	29	-	0.0%	-	0.0%
February	31	-	0.0%	3	9.7%
March	29	-	0.0%	1	3.4%
April	43	-	0.0%	-	0.0%
May	32	2	6.3%	2	6.3%
June	-	-	-	-	-
July	-	-	-	-	-
August	-	-	-	-	-
September	-	-	-	-	-
October	-	-	-	-	-
November	-	-	-	-	-
December	-	-	-	-	-
<b>Total</b>	<b>164</b>	<b>2</b>	<b>1.2%</b>	<b>6</b>	<b>3.7%</b>

<sup>1</sup> All fatalities in alcohol-involved crashes.

Alcohol-involved Fatalities <sup>1</sup> , 2025 to Date		
Alcohol-involved	26	16%
Not Alcohol-involved	138	84%
Alcohol Unknown	-	-
<b>Total</b>	<b>164</b>	<b>100%</b>

<sup>1</sup> All fatalities in alcohol-involved crashes.

Motorcyclist Helmet Usage <sup>1</sup> , 2025 to Date	
Helmet Usage	Fatalities
Yes	13
No	18
Unknown	-
<b>Total</b>	<b>31</b>

<sup>1</sup> Excludes 4W/ATV.

Fatalities by Vehicle <sup>1</sup> Occupant Seat Belt Usage, 2025 to Date				
Restraint	Yes	No	Unknown	Total
Seat Belt	40	55	-	95

<sup>1</sup> Total vehicle occupant fatalities. Excludes motorcyclist, 4W/ATV, semi truck, pedestrian and pedalcyclist fatalities.

Senior (65+) Fatalities, 2025 to Date	
Year	Fatalities
2025	27
2024	29
2023	29

Fatalities by Residency and Location, 2025 to Date				
Location	New Mexico Resident	Non- Resident	Unknown Residency	Total
Rural	70	25	-	95
Urban	63	6	-	69
Unknown	-	-	-	-
<b>Total</b>	<b>133</b>	<b>31</b>	<b>-</b>	<b>164</b>

Month to Month Comparison of Fatalities by Alcohol Involvement, 2025 to Date												
Month	2025 Fatalities				2024 Fatalities				2023 Fatalities			
	Alcohol-involved <sup>1</sup>			Total	Alcohol-involved <sup>1</sup>			Total	Alcohol-involved <sup>1</sup>			Total
	Yes	No	Unk		Yes	No	Unk		Yes	No	Unk	
January	3	26	-	29	10	16	-	26	8	22	-	30
February	7	24	-	31	10	27	-	37	14	25	-	39
March	2	27	-	29	13	23	-	36	9	14	-	23
April	6	37	-	43	12	32	-	44	14	18	-	32
May	8	24	-	32	10	20	-	30	17	21	-	38
June	-	-	-	-	-	-	-	-	-	-	-	-
July	-	-	-	-	-	-	-	-	-	-	-	-
August	-	-	-	-	-	-	-	-	-	-	-	-
September	-	-	-	-	-	-	-	-	-	-	-	-
October	-	-	-	-	-	-	-	-	-	-	-	-
November	-	-	-	-	-	-	-	-	-	-	-	-
December	-	-	-	-	-	-	-	-	-	-	-	-
<b>Total</b>	<b>26</b>	<b>138</b>	<b>-</b>	<b>164</b>	<b>55</b>	<b>118</b>	<b>-</b>	<b>173</b>	<b>62</b>	<b>100</b>	<b>-</b>	<b>162</b>

<sup>1</sup> Identifies whether the fatality resulted from an alcohol-involved crash.

Month to Month Comparison of Fatalities by Seat Belt Usage, 2025 to Date												
Month	2025 Fatalities				2024 Fatalities				2023 Fatalities			
	Seat Belt <sup>1</sup>			Total <sup>2</sup>	Seat Belt <sup>1</sup>			Total <sup>2</sup>	Seat Belt <sup>1</sup>			Total <sup>2</sup>
	Yes	No	Unk		Yes	No	Unk		Yes	No	Unk	
January	15	6	-	21	6	9	-	15	8	11	-	19
February	4	12	-	16	7	16	-	23	6	11	-	17
March	4	10	-	14	5	12	-	17	5	4	1	10
April	11	13	-	24	9	16	-	25	8	15	-	23
May	6	14	-	20	-	10	-	10	3	18	-	21
June	-	-	-	-	-	-	-	-	-	-	-	-
July	-	-	-	-	-	-	-	-	-	-	-	-
August	-	-	-	-	-	-	-	-	-	-	-	-
September	-	-	-	-	-	-	-	-	-	-	-	-
October	-	-	-	-	-	-	-	-	-	-	-	-
November	-	-	-	-	-	-	-	-	-	-	-	-
December	-	-	-	-	-	-	-	-	-	-	-	-
<b>Total</b>	<b>40</b>	<b>55</b>	<b>-</b>	<b>95</b>	<b>27</b>	<b>63</b>	<b>-</b>	<b>90</b>	<b>30</b>	<b>59</b>	<b>1</b>	<b>90</b>

<sup>1</sup> Identifies whether a vehicle occupant was belted (Yes), unbelted (No), or belt usage was not reported (Unk).

<sup>2</sup> Total vehicle occupant fatalities. Excludes motorcyclist, 4W/ATV, semi truck, pedestrian and pedalcyclist fatalities.

Fatalities by County and Month, 2025 To Date														
County	Jan.	Feb.	Mar.	Apr.	May	Jun.	Jul.	Aug.	Sep.	Oct.	Nov.	Dec.	2025 Total, to Date	2024 Total, to Date
Bernalillo	4	10	9	5	7	-	-	-	-	-	-	-	35	57
Catron	-	-	-	-	-	-	-	-	-	-	-	-	-	1
Chaves	1	1	-	1	1	-	-	-	-	-	-	-	4	8
Cibola	-	-	2	1	-	-	-	-	-	-	-	-	3	2
Colfax	-	-	-	-	-	-	-	-	-	-	-	-	-	1
Curry	-	1	-	-	-	-	-	-	-	-	-	-	1	3
De Baca	-	-	-	-	-	-	-	-	-	-	-	-	-	1
Doña Ana	3	2	-	5	3	-	-	-	-	-	-	-	13	10
Eddy	-	-	4	4	3	-	-	-	-	-	-	-	11	8
Grant	-	2	-	1	2	-	-	-	-	-	-	-	5	3
Guadalupe	1	-	1	1	-	-	-	-	-	-	-	-	3	6
Harding	-	-	-	-	-	-	-	-	-	-	-	-	-	-
Hidalgo	-	1	-	-	-	-	-	-	-	-	-	-	1	1
Lea	6	-	-	5	-	-	-	-	-	-	-	-	11	9
Lincoln	1	1	-	1	-	-	-	-	-	-	-	-	3	1
Los Alamos	-	-	-	-	-	-	-	-	-	-	-	-	-	1
Luna	2	-	3	1	2	-	-	-	-	-	-	-	8	1
McKinley	3	5	1	1	3	-	-	-	-	-	-	-	13	5
Mora	-	-	-	1	-	-	-	-	-	-	-	-	1	-
Otero	-	1	-	1	1	-	-	-	-	-	-	-	3	4
Quay	1	-	-	-	1	-	-	-	-	-	-	-	2	1
Rio Arriba	-	-	1	4	1	-	-	-	-	-	-	-	6	5
Roosevelt	-	1	1	-	1	-	-	-	-	-	-	-	3	1
San Juan	2	-	1	3	1	-	-	-	-	-	-	-	7	11
San Miguel	-	2	-	2	-	-	-	-	-	-	-	-	4	3
Sandoval	1	-	1	2	1	-	-	-	-	-	-	-	5	5
Santa Fe	1	3	1	1	-	-	-	-	-	-	-	-	6	8
Sierra	1	-	1	1	-	-	-	-	-	-	-	-	3	-
Socorro	1	-	-	-	2	-	-	-	-	-	-	-	3	6
Taos	-	1	1	-	2	-	-	-	-	-	-	-	4	3
Torrance	-	-	-	1	-	-	-	-	-	-	-	-	1	3
Union	1	-	-	-	-	-	-	-	-	-	-	-	1	-
Valencia	-	-	2	1	1	-	-	-	-	-	-	-	4	5
<b>Total</b>	<b>29</b>	<b>31</b>	<b>29</b>	<b>43</b>	<b>32</b>	<b>-</b>	<b>-</b>	<b>-</b>	<b>-</b>	<b>-</b>	<b>-</b>	<b>-</b>	<b>164</b>	<b>173</b>

Fatalities by County Relating to Alcohol, Belt Use, and Under 21 BAC, 2025 to Date							
County	Alcohol-involved Fatalities <sup>1</sup>		Unbelted Fatalities		Under 21 (15-20) with a BAC <sup>2</sup>		Total Fatalities
	Count	Percent <sup>3</sup>	Count	Percent <sup>3</sup>	Count	Percent <sup>3</sup>	
Bernalillo	4	11.4%	5	14.3%	-	0.0%	35
Catron	-	-	-	-	-	-	-
Chaves	-	0.0%	3	75.0%	-	0.0%	4
Cibola	-	0.0%	2	66.7%	-	0.0%	3
Colfax	-	-	-	-	-	-	-
Curry	-	0.0%	1	100.0%	-	0.0%	1
De Baca	-	-	-	-	-	-	-
Doña Ana	1	7.7%	7	53.8%	-	0.0%	13
Eddy	2	18.2%	2	18.2%	-	0.0%	11
Grant	-	0.0%	-	0.0%	-	0.0%	5
Guadalupe	-	0.0%	1	33.3%	-	0.0%	3
Harding	-	-	-	-	-	-	-
Hidalgo	-	0.0%	1	100.0%	-	0.0%	1
Lea	-	0.0%	2	18.2%	-	0.0%	11
Lincoln	-	0.0%	-	0.0%	-	0.0%	3
Los Alamos	-	-	-	-	-	-	-
Luna	1	12.5%	2	25.0%	-	0.0%	8
McKinley	4	30.8%	6	46.2%	-	0.0%	13
Mora	-	0.0%	-	0.0%	-	0.0%	1
Otero	2	66.7%	-	0.0%	-	0.0%	3
Quay	-	0.0%	-	0.0%	-	0.0%	2
Rio Arriba	-	0.0%	5	83.3%	-	0.0%	6
Roosevelt	-	0.0%	3	100.0%	-	0.0%	3
San Juan	5	71.4%	3	42.9%	-	0.0%	7
San Miguel	-	0.0%	2	50.0%	-	0.0%	4
Sandoval	1	20.0%	1	20.0%	-	0.0%	5
Santa Fe	3	50.0%	1	16.7%	-	0.0%	6
Sierra	-	0.0%	2	66.7%	-	0.0%	3
Socorro	1	33.3%	2	66.7%	-	0.0%	3
Taos	2	50.0%	1	25.0%	-	0.0%	4
Torrance	-	0.0%	-	0.0%	-	0.0%	1
Union	-	0.0%	1	100.0%	-	0.0%	1
Valencia	-	0.0%	2	50.0%	-	0.0%	4
<b>Total</b>	<b>26</b>	<b>15.9%</b>	<b>55</b>	<b>33.5%</b>	<b>-</b>	<b>0.0%</b>	<b>164</b>

<sup>1</sup> All fatalities in alcohol-involved crashes.

<sup>2</sup> Fatalities under 21 with a reported BAC (Blood Alcohol Content) above zero.

<sup>3</sup> Percentage based on total fatalities in the county.

Fatalities by County and Vehicle Type, 2025 to Date										
County	Cars	Pickup Trucks	Semi Trucks, Buses	Vans, SUVs, Utility Vehicles	ATV (4W)	Motorcyclists	Pedestrians	Pedalcyclists	RVs	Total Fatalities
Bernalillo	3	1	-	2	-	16	10	3	-	35
Catron	-	-	-	-	-	-	-	-	-	-
Chaves	2	1	-	1	-	-	-	-	-	4
Cibola	1	-	-	2	-	-	-	-	-	3
Colfax	-	-	-	-	-	-	-	-	-	-
Curry	-	1	-	-	-	-	-	-	-	1
De Baca	-	-	-	-	-	-	-	-	-	-
Doña Ana	2	2	1	6	-	1	-	1	-	13
Eddy	-	2	-	2	1	3	3	-	-	11
Grant	2	-	2	-	1	-	-	-	-	5
Guadalupe	1	-	-	1	-	-	1	-	-	3
Harding	-	-	-	-	-	-	-	-	-	-
Hidalgo	-	1	-	-	-	-	-	-	-	1
Lea	4	1	3	3	-	-	-	-	-	11
Lincoln	2	-	-	-	1	-	-	-	-	3
Los Alamos	-	-	-	-	-	-	-	-	-	-
Luna	3	2	1	1	-	-	1	-	-	8
McKinley	4	4	-	1	-	2	2	-	-	13
Mora	-	-	-	1	-	-	-	-	-	1
Otero	1	-	-	-	-	2	-	-	-	3
Quay	-	1	-	1	-	-	-	-	-	2
Rio Arriba	2	1	-	2	-	-	-	1	-	6
Roosevelt	2	-	-	1	-	-	-	-	-	3
San Juan	-	3	-	1	-	1	-	2	-	7
San Miguel	-	-	-	3	-	1	-	-	-	4
Sandoval	3	-	-	-	-	2	-	-	-	5
Santa Fe	-	2	-	1	-	-	3	-	-	6
Sierra	1	1	-	1	-	-	-	-	-	3
Socorro	2	-	-	1	-	-	-	-	-	3
Taos	1	1	-	-	-	1	1	-	-	4
Torrance	-	-	-	1	-	-	-	-	-	1
Union	1	-	-	-	-	-	-	-	-	1
Valencia	2	-	-	-	-	2	-	-	-	4
<b>Total</b>	<b>39</b>	<b>24</b>	<b>7</b>	<b>32</b>	<b>3</b>	<b>31</b>	<b>21</b>	<b>7</b>	<b>-</b>	<b>164</b>

Motorcycle <sup>1</sup> Fatalities by County and Month, 2025 to Date														
County	Jan.	Feb.	Mar.	Apr.	May	Jun.	Jul.	Aug.	Sep.	Oct.	Nov.	Dec.	2025 Total, to Date	2024 Total, to Date
Bernalillo	2	3	5	4	2	-	-	-	-	-	-	-	16	9
Catron	-	-	-	-	-	-	-	-	-	-	-	-	-	-
Chaves	-	-	-	-	-	-	-	-	-	-	-	-	-	1
Cibola	-	-	-	-	-	-	-	-	-	-	-	-	-	-
Colfax	-	-	-	-	-	-	-	-	-	-	-	-	-	-
Curry	-	-	-	-	-	-	-	-	-	-	-	-	-	-
De Baca	-	-	-	-	-	-	-	-	-	-	-	-	-	-
Doña Ana	-	-	-	1	-	-	-	-	-	-	-	-	1	2
Eddy	-	-	1	1	1	-	-	-	-	-	-	-	3	2
Grant	-	-	-	-	-	-	-	-	-	-	-	-	-	1
Guadalupe	-	-	-	-	-	-	-	-	-	-	-	-	-	-
Harding	-	-	-	-	-	-	-	-	-	-	-	-	-	-
Hidalgo	-	-	-	-	-	-	-	-	-	-	-	-	-	-
Lea	-	-	-	-	-	-	-	-	-	-	-	-	-	2
Lincoln	-	-	-	-	-	-	-	-	-	-	-	-	-	-
Los Alamos	-	-	-	-	-	-	-	-	-	-	-	-	-	-
Luna	-	-	-	-	-	-	-	-	-	-	-	-	-	-
McKinley	-	-	-	-	2	-	-	-	-	-	-	-	2	-
Mora	-	-	-	-	-	-	-	-	-	-	-	-	-	-
Otero	-	-	-	1	1	-	-	-	-	-	-	-	2	-
Quay	-	-	-	-	-	-	-	-	-	-	-	-	-	-
Rio Arriba	-	-	-	-	-	-	-	-	-	-	-	-	-	1
Roosevelt	-	-	-	-	-	-	-	-	-	-	-	-	-	1
San Juan	-	-	1	-	-	-	-	-	-	-	-	-	1	1
San Miguel	-	-	-	1	-	-	-	-	-	-	-	-	1	1
Sandoval	-	-	-	1	1	-	-	-	-	-	-	-	2	2
Santa Fe	-	-	-	-	-	-	-	-	-	-	-	-	-	-
Sierra	-	-	-	-	-	-	-	-	-	-	-	-	-	-
Socorro	-	-	-	-	-	-	-	-	-	-	-	-	-	-
Taos	-	-	-	-	1	-	-	-	-	-	-	-	1	-
Torrance	-	-	-	-	-	-	-	-	-	-	-	-	-	-
Union	-	-	-	-	-	-	-	-	-	-	-	-	-	-
Valencia	-	-	2	-	-	-	-	-	-	-	-	-	2	2
<b>Total</b>	<b>2</b>	<b>3</b>	<b>9</b>	<b>9</b>	<b>8</b>	<b>-</b>	<b>-</b>	<b>-</b>	<b>-</b>	<b>-</b>	<b>-</b>	<b>-</b>	<b>31</b>	<b>25</b>

<sup>1</sup> The term motorcycle includes motorized scooters and mopeds, but excludes 4W/ATVs.



Motorcycle <sup>1</sup> Fatalities by County Relating to Alcohol, Helmet Use, and Age, 2025 to Date							
County	Alcohol-involved Fatalities <sup>2</sup>		Unhelmeted Fatalities		Fatalities Under Age 30 (Ages 15-29)		Total Fatalities
	Count	Percent <sup>3</sup>	Count	Percent <sup>3</sup>	Count	Percent <sup>3</sup>	
Bernalillo	-	0.0%	9	56.3%	-	0.0%	16
Catron	-	-	-	-	-	-	-
Chaves	-	-	-	-	-	-	-
Cibola	-	-	-	-	-	-	-
Colfax	-	-	-	-	-	-	-
Curry	-	-	-	-	-	-	-
De Baca	-	-	-	-	-	-	-
Doña Ana	-	0.0%	1	100.0%	-	0.0%	1
Eddy	-	0.0%	2	66.7%	-	0.0%	3
Grant	-	-	-	-	-	-	-
Guadalupe	-	-	-	-	-	-	-
Harding	-	-	-	-	-	-	-
Hidalgo	-	-	-	-	-	-	-
Lea	-	-	-	-	-	-	-
Lincoln	-	-	-	-	-	-	-
Los Alamos	-	-	-	-	-	-	-
Luna	-	-	-	-	-	-	-
McKinley	-	0.0%	-	0.0%	-	0.0%	2
Mora	-	-	-	-	-	-	-
Otero	1	50.0%	1	50.0%	-	0.0%	2
Quay	-	-	-	-	-	-	-
Rio Arriba	-	-	-	-	-	-	-
Roosevelt	-	-	-	-	-	-	-
San Juan	-	0.0%	1	100.0%	-	0.0%	1
San Miguel	-	-	1	-	-	-	1
Sandoval	-	0.0%	-	0.0%	-	0.0%	2
Santa Fe	-	-	-	-	-	-	-
Sierra	-	-	-	-	-	-	-
Socorro	-	-	-	-	-	-	-
Taos	1	100.0%	1	100.0%	-	0.0%	1
Torrance	-	-	-	-	-	-	-
Union	-	-	-	-	-	-	-
Valencia	-	0.0%	2	100.0%	-	0.0%	2
<b>Total</b>	<b>2</b>	<b>0.0%</b>	<b>18</b>	<b>0.0%</b>	<b>-</b>	<b>0.0%</b>	<b>31</b>

<sup>1</sup> The term motorcycle includes motorized scooters and mopeds, but excludes 4W/ATVs.

<sup>2</sup> All motorcycle fatalities in alcohol-involved crashes.

<sup>3</sup> Percentage based on total motorcycle fatalities in the county.

Fatalities by Maintenance District and Month, 2025 to Date													
District	Jan.	Feb.	Mar.	Apr.	May	Jun.	Jul.	Aug.	Sep.	Oct.	Nov.	Dec.	Total
District 1	7	5	4	8	9	-	-	-	-	-	-	-	33
District 2	8	5	5	12	6	-	-	-	-	-	-	-	36
District 3	5	10	12	7	9	-	-	-	-	-	-	-	43
District 4	3	2	1	4	1	-	-	-	-	-	-	-	11
District 5	3	4	4	9	4	-	-	-	-	-	-	-	24
District 6	3	5	3	3	3	-	-	-	-	-	-	-	17
<b>Total</b>	<b>29</b>	<b>31</b>	<b>29</b>	<b>43</b>	<b>32</b>	<b>-</b>	<b>-</b>	<b>-</b>	<b>-</b>	<b>-</b>	<b>-</b>	<b>-</b>	<b>164</b>

Fatalities by Maintenance District Relating to Alcohol, Belt Use, and Under 21 BAC, 2025 to Date							
District	Alcohol-involved Fatalities <sup>1</sup>		Unbelted Fatalities		Under 21 (15-20) Fatalities with a BAC <sup>2</sup>		Total Fatalities
	Count	Percent <sup>3</sup>	Count	Percent <sup>3</sup>	Count	Percent <sup>3</sup>	
District 1	3	9.1%	14	42.4%	-	0.0%	33
District 2	4	11.1%	11	30.6%	-	0.0%	36
District 3	5	11.6%	8	18.6%	-	0.0%	43
District 4	-	0.0%	4	36.4%	-	0.0%	11
District 5	10	41.7%	10	41.7%	-	0.0%	24
District 6	4	23.5%	8	47.1%	-	0.0%	17
<b>Total</b>	<b>26</b>	<b>15.9%</b>	<b>55</b>	<b>33.5%</b>	<b>-</b>	<b>0.0%</b>	<b>164</b>

<sup>1</sup> All fatalities in alcohol-involved crashes.

<sup>2</sup> Fatalities under 21 with a reported BAC (Blood Alcohol Content) above zero.

<sup>3</sup> Percentage based on total fatalities in the district