

New Mexico Animal-Involved Crash Statistics, 2013 – 2017



New Mexico Department of Transportation

Traffic Safety Division
Traffic Records Bureau
P.O. Box 1149
Santa Fe, New Mexico 87504-1149
(505) 827-0427
<http://dot.state.nm.us/>

Produced for the New Mexico Department of Transportation,



Traffic Safety Division, Traffic Records Bureau, under Contract C06100
Produced by the University of New Mexico Geospatial and Population Studies,
Traffic Research Unit
<https://gps.unm.edu/tru>

Distributed in compliance with New Mexico Statute 66-7-214
as a reference source regarding New Mexico traffic crashes

Source:

Crash data are from the NMDOT Uniform Crash Reports (UCR), submitted by law enforcement agencies in the state, for any incident on a public roadway involving one or more motor vehicles that resulted in death, injury, or at least \$500 in property damage. These reports are processed by the NMDOT Traffic Records Program, and analyzed by the University of New Mexico, Geospatial and Population Studies (GPS), Traffic Research Unit (TRU).

The NMDOT Crash Database, as of March 25, 2019, was used for this report.

Disclaimer:

NMDOT crash data is protected by the federal mandate Title 23 U.S.C. Section 409, which forbids the discovery and admission into evidence of reports, data, or other information compiled or collected for activities required pursuant to Federal highway safety programs, or for the purpose of developing any highway safety construction improvement project, which may be implemented utilizing federal-aid highway funds, in tort litigation arising from occurrences at the locations addressed in such documents or data.

For the purposes of this report, data are compiled by the University of New Mexico, Geospatial and Population Studies, Traffic Research Unit (TRU), on behalf of the New Mexico Department of Transportation (NMDOT). Data in this report may differ from that in other data sources, such as the Federal Fatality Analysis Reporting System (FARS), due to the timing of publications and rules for how data are compiled and maintained in Federal vs. State databases. If you have questions regarding this report, please contact the Traffic Safety Division at 505-827-0427.

Table of Contents

1. Animal-involved Crashes and Fatalities, 2013 – 2017	6
2. People in Animal-involved Crashes by Severity of Injuries, 2013 – 2017.....	7
3. Animal-involved Crashes by Month and Day, 2013 – 2017.....	8
4. Animal-involved Crashes by Hour and Day of Week, 2013 – 2017	9
5. Percentage of Fatalities in Animal-involved Crashes by Drivers Under the Influence of Alcohol or Drugs, 2013 – 2017	10
6. People in Animal-involved Crashes by Severity of Injuries with Drivers Under the Influence of Alcohol, 2013 – 2017	10
7. People in Animal-involved Crashes by Severity of Injuries with Drivers Under the Influence of Drugs, 2013 – 2017	10
8. People in Animal-involved Crashes with Drivers Under the Influence of Alcohol and Drugs by Age, 2013 – 2017	11
9. People in Animal-involved Crashes with Drivers Under the Influence of Alcohol and Drugs by Age and Sex, 2013 – 2017	11
10. People in Animal-involved Crashes by Age Group and Sex, 2013 – 2017	12
11. People in Animal-involved Crashes by Hit-and-Run, 2013 – 2017	13
12. People in Animal-involved Crashes by Severity of Injuries and Light Conditions, 2013 – 2017.....	13
13. People in Animal-involved Crashes by Severity of Injuries and Road Conditions, 2013 – 2017	13
14. People in Animal-involved Crashes by Severity of Injuries and Road Surface, 2013 – 2017	14
15. People in Animal-involved Crashes by Severity of Injuries and Traffic Control Device, 2013 – 2017.....	14
16. People in Animal-involved Crashes by Severity of Injuries and Road Design Lanes, 2013 – 2017.....	14
17. People in Animal-involved Crashes by Severity of Injuries and Road Design Dividers, 2013 – 2017.....	15
18. People in Animal-involved Crashes by Severity of Injuries and Road Design, 2013 – 2017.....	15
19. People in Animal-involved Crashes by Severity of Injuries and Heavy-Truck Driver Actions, 2013 – 2017	15
20. People in Animal-involved Crashes by Severity of Injuries and Animal Class, 2013 – 2017	16
21. People in Animal-involved Crashes by Severity of Injuries and Agency, 2013 – 2017	16
22. People in Animal-involved Crashes by Severity of Injuries and City, 2013 – 2017.....	17
23. People in Animal-involved Crashes by Severity of Injuries and County, 2013 – 2017	18
Map 1: Animal-involved Crashes, 2013-2017.....	19
Map 2: Animal-involved Crashes by Year	20
Map 3: Animal-involved Crashes – Density Map, 2013-2017	21
Map 4: Animal-involved Crashes by Severity of Injury, 2013-2017	22
Map 5: Fatalities in Animal-involved Crashes by Drivers Under the Influence of Alcohol, 2013-2017.....	23
Map 6: Location with Highest Number of Animal-involved Crashes, 2013-2017: San Juan County.....	24

Definitions

Alcohol-involved Crash – A crash for which the Uniform Crash Report (UCR) indicated that 1) a DWI citation was issued, 2) alcohol was a contributing factor, or 3) a person in control of a vehicle was suspected of being under the influence of alcohol. Alcohol-involved crashes involve one or more alcohol-involved drivers.

Alcohol-involved Driver – A person in control of a motor vehicle who was cited for DWI or indicated on the Uniform Crash Report as either suspected or determined by testing to be under the influence of alcohol. A single alcohol-involved crash can involve multiple alcohol-involved drivers.

Animal-involved Crash – A crash in which one or more animals were struck.

Alcohol or Drug-involved Animal-involved Crash – An animal-involved crash for which the Uniform Crash Report (UCR) indicated that 1) a DWI citation was issued, 2) alcohol was a contributing factor, or 3) a person in control of a vehicle not necessary the heavy-truck driver alone (including a pedestrian or pedal-cyclist) was suspected of being under the influence of alcohol or drugs. Alcohol or drug-involved crashes involve one or more alcohol or drug-involved drivers. A single alcohol or drug-involved crash can involve multiple alcohol or drug-involved drivers.

Crash – A reported incident on a public roadway involving one or more motor vehicles that resulted in death, personal injury, or at least \$500 in property damage. Crashes on private property (such as a parking lot) are not included.

Crash Classification (a.k.a. Class) – The first harmful event in a crash, such as hitting a fixed object, animal or pedestrian.

Contributing Factor – Conditions or actions which may have contributed to the crash. Reported in the Apparent Contributing Factors section of the crash report. Multiple contributing factors may be reported for any vehicle in a crash.

Driver – A person in control of a motor vehicle. Pedestrians and pedalcyclists are classified as drivers of non-motorized vehicles.

Driver Under the Influence of Alcohol or Drugs – A driver who was cited for DWI or indicated on the Uniform Crash Report as either suspected or determined by testing to be under the influence of alcohol or drugs.

Drug-involved Crash – A crash for which the Uniforms Crash Report (UCR) indicated that 1) a DWI citation was issued, 2) Drug was a contributing factor, or 3) a person in control of a vehicle was suspected of being under the influence of drugs. Drug-involved crashes involve one or more drug-involved drivers.

Drug-involved Driver – A person in control of a motor vehicle who was cited for DWI or indicated on the Uniform Crash Report as either suspected or determined by testing to be under the influence of drugs. A single drug-involved crash can involve multiple drug-involved drivers.

Fatal Crash – A crash in which at least one person was killed. Note that more than one person can be killed in a single fatal crash.

Fatalities – The number of people killed in a crash. The terms *killed* and *deaths* are synonymous with *fatalities*. A fatality is crash related if it occurs at the time of the crash or if the person(s) involved in the crash dies within 30 days.

Injuries – The number of people injured in a crash, in contrast to the number of crashes in which people were injured. This includes Suspected Serious Injuries (Class A), Suspected Minor Injuries (Class B) and Possible Injuries (Class C). Counts consist of people injured but not killed.

Injury Crash – A reported crash in which at least one person was injured. Injury crashes involve at least one Suspected Serious Injury (Class A), Suspected Minor Injury (Class B) or Possible Injury (Class C). Fatal crashes are not included in this category.

Missing Data – An indication that the applicable field on the Uniform Crash Report form was left blank or contained an invalid code. Starting with crashes that occurred in 2012, improvements in the identification of missing data in the NMDOT crash database led to an increase in the reported amount of missing data.

Possible Injury – An injury reported or claimed which is not a fatal, suspected serious or suspected minor injury. Possible injuries are those which are reported by the person or are indicated by his or her behavior, but no wounds or injuries are readily evident (a.k.a. Class C Injury, Complaint of Injury, or Non-visible Injury). Examples include momentary loss of consciousness, claim of injury, limping, or complaint of pain or nausea.

Property Damage Only Crash (PDO) – A reported crash on a public road that did not involve injuries or fatalities but resulted in more than \$500 in property damage only (a.k.a. a Class O crash).

Serious Injury – A Suspected Serious Injury.

Severity of Injury – The degree of injury to a person in a crash as described by the KABCO scale: K is for Killed, ABC indicate injuries (A=Suspected Serious Injury, B=Suspected Minor Injury, C=Possible Injury), and O indicates No Apparent Injuries (property damage only).

Suspected Minor Injury – A visible but not serious injury, such as abrasions, bruises and minor lacerations, as observed by the officer at the scene of the crash. Also known as a Class B Injury or a Visible Injury.

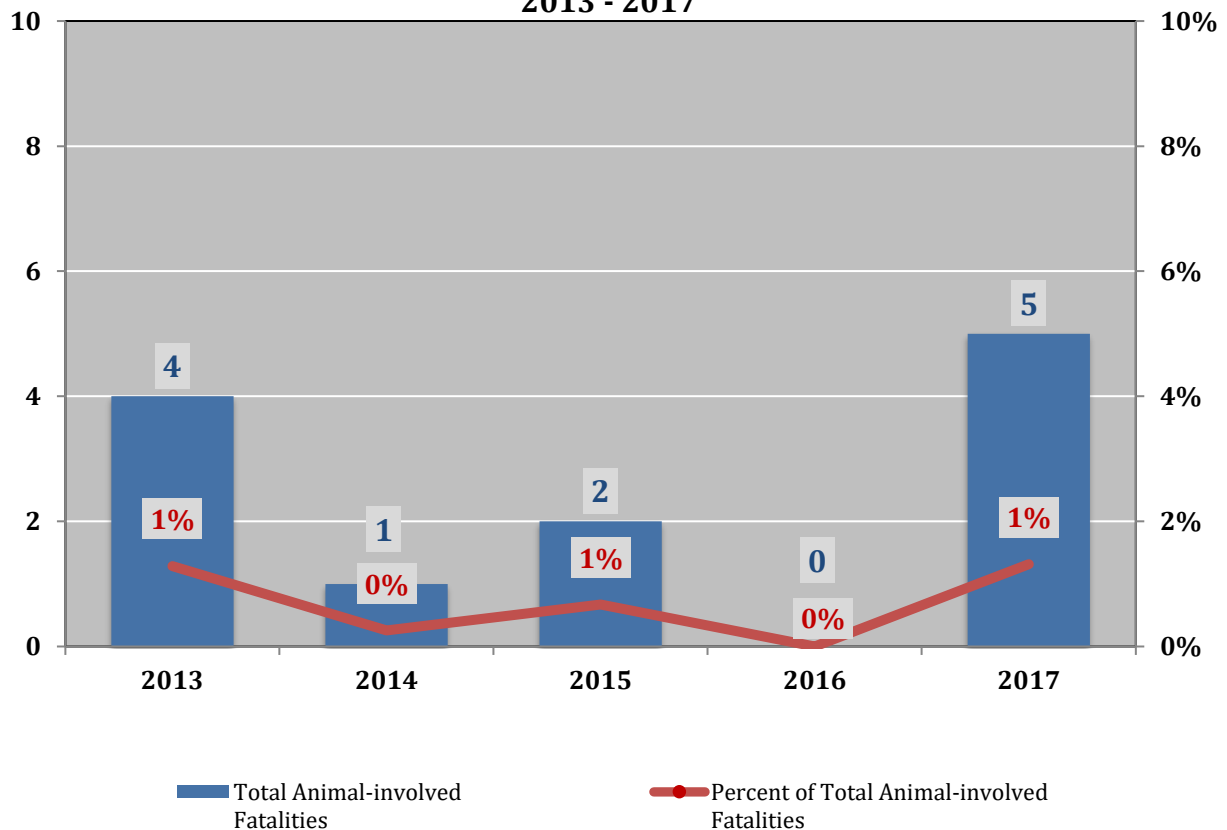
Suspected Serious Injury – An injury, other than a fatal injury, in which the person was carried from the scene of the crash or in which the injured person was unable to walk, drive or perform normal activities he or she was capable of performing before the injury occurred, as observed by the officer at the scene of the crash. Also known as a Class A Injury or an Incapacitating Injury.

Vehicle – A motorized car, truck, bus, van, or motorcycle (mechanically or electrically powered) for carrying or transporting persons or things. Pedestrians and pedalcyclists are counted as nonmotorized vehicles when in a crash with a motor vehicle.

1. Animal-involved Crashes and Fatalities, 2013 - 2017

Year	Crashes		Percent of Total Animal-involved Crashes	Fatalities		Percent of Total Animal-involved Fatalities
	Animal-involved Crashes	Total Crashes		Animal-involved Fatalities	Total Fatalities	
2013	1,227	39,208	3.1%	4	311	1%
2014	1,404	40,690	3.5%	1	386	0%
2015	1,510	45,308	3.3%	2	298	1%
2016	1,637	45,071	3.6%	0	405	0%
2017	1,849	45,906	4.0%	5	380	1%
Total	7,627	216,183	3.5%	12	1,780	1%

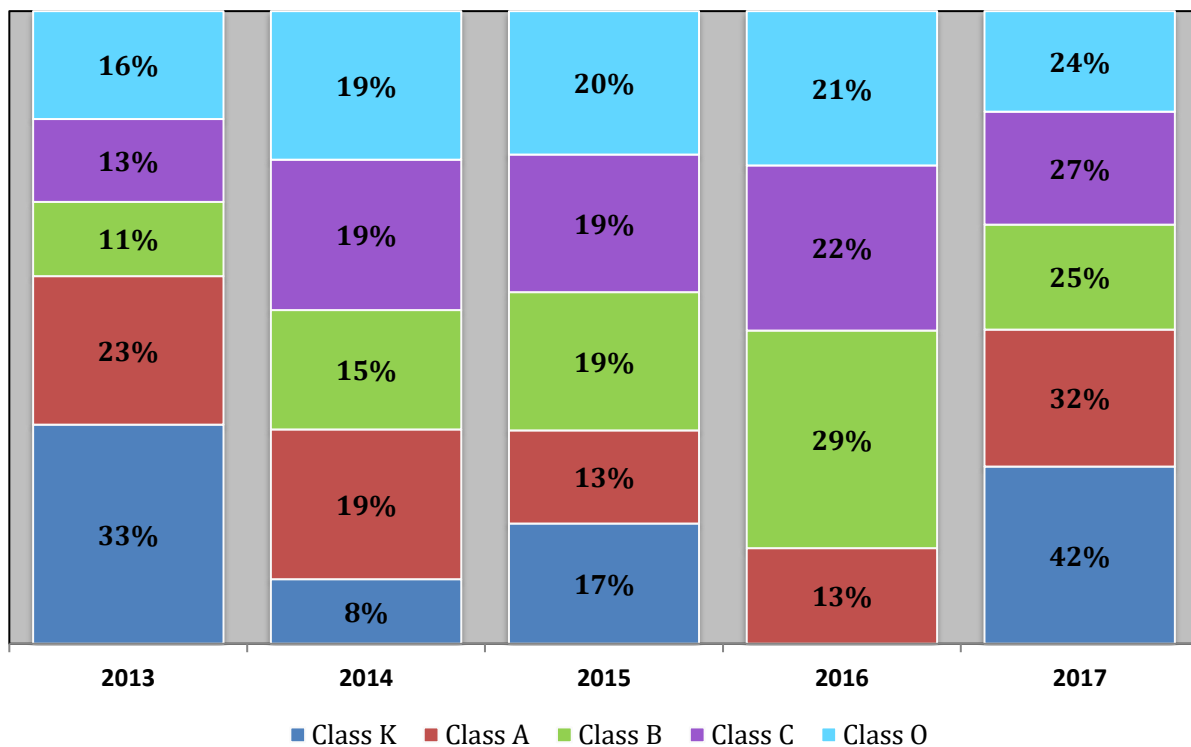
Total Animal-involved Fatalities and Percent of Total Fatalities, 2013 - 2017



2. People in Animal-involved Crashes by Severity of Injuries, 2013 – 2017

Year	Fatalities (Class K)		Suspected Serious Injuries (Class A)		Suspected Minor Injuries (Class B)		Possible Injuries (Class C)		No Apparent Injuries (Class O)		Total People in Animal-involved Crashes	
	Count	Percent	Count	Percent	Count	Percent	Count	Percent	Count	Percent	Count	Percent
2013	4	33%	7	23%	33	11%	70	13%	1,872	16%	1,986	16%
2014	1	8%	6	19%	45	15%	108	19%	2,187	19%	2,347	19%
2015	2	17%	4	13%	56	19%	106	19%	2,264	20%	2,432	20%
2016	0	0%	4	13%	86	29%	124	22%	2,377	21%	2,591	21%
2017	5	42%	10	32%	72	25%	148	27%	2,695	24%	2,930	24%
Total	Count	12	31	292	556	11,395	12,286	100%				
	Percent	0%	0%	2%	5%	93%	100%					

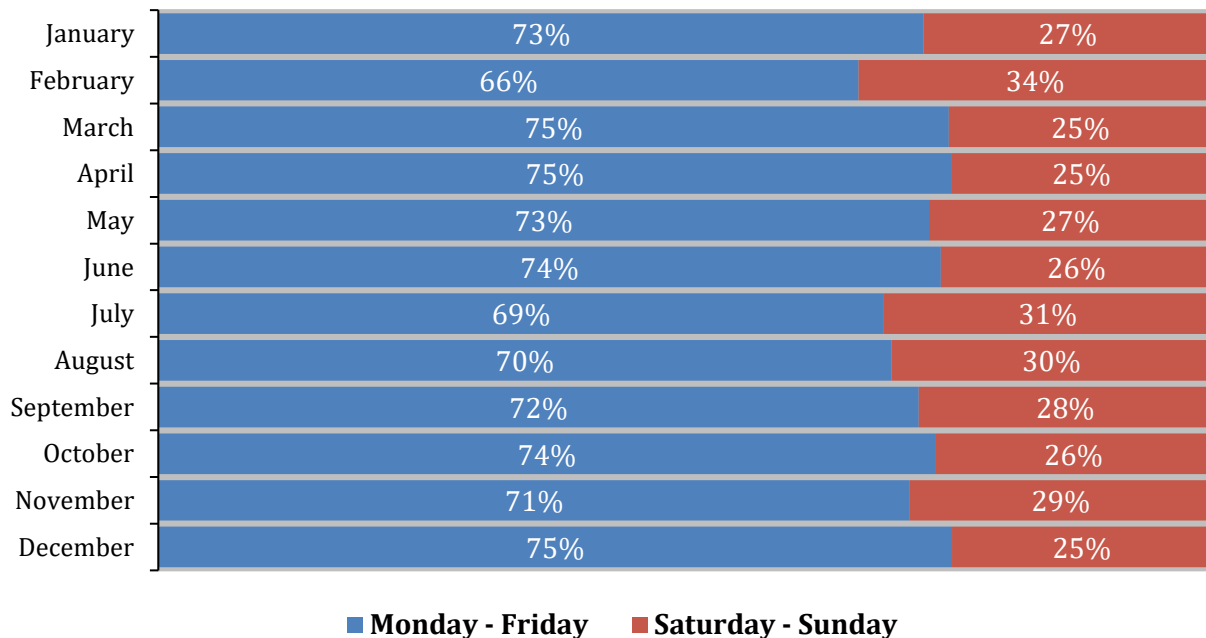
Percent of Injury Severity to People in Animal-involved Crashes, 2013 -2017



3. Animal-involved Crashes by Month and Day, 2013 - 2017

Month	Monday	Tuesday	Wednesday	Thursday	Friday	Saturday	Sunday	Total Animal-involved Crashes		
								Count	Percent	
January	77	73	74	68	72	62	75	501	7%	
February	45	53	38	50	56	59	63	364	5%	
March	70	67	71	73	92	62	62	497	7%	
April	86	71	84	82	88	69	66	546	7%	
May	72	100	85	69	102	87	70	585	8%	
June	123	112	107	101	123	99	97	762	10%	
July	86	77	95	88	123	103	109	681	9%	
August	81	80	66	80	89	95	78	569	7%	
September	78	105	92	89	106	90	91	651	9%	
October	104	142	88	109	133	108	97	781	10%	
November	106	111	134	119	105	110	121	806	11%	
December	120	146	135	122	143	104	114	884	12%	
Total	Count	1,048	1,137	1,069	1,050	1,232	1,048	1,043	7,627	100%
	Percent	14%	15%	14%	14%	16%	14%	14%		100%

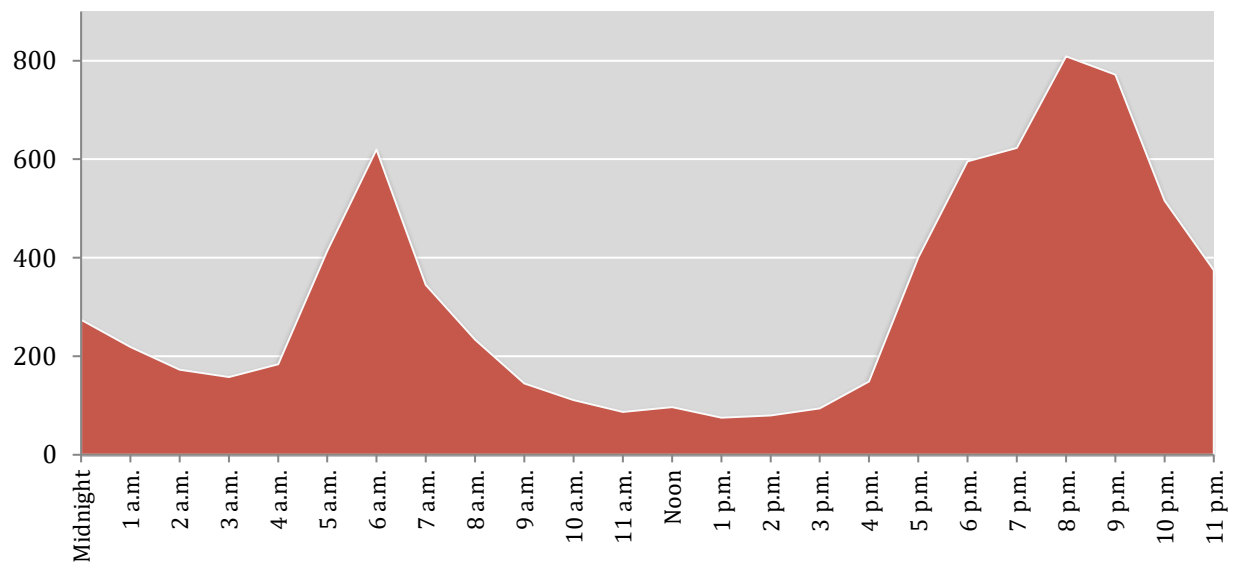
Weekday Versus Weekend Animal-involved Crashes, 2013 - 2017



4. Animal-involved Crashes by Hour and Day of Week, 2013 – 2017

Hour	Animal-involved in Crashes							Total Animal-involved Crashes		
	Monday	Tuesday	Wednesday	Thursday	Friday	Saturday	Sunday	Count	Percent	
Midnight	38	34	28	26	42	55	51	274	3.6%	
1 a.m.	28	26	23	30	35	39	38	219	2.9%	
2 a.m.	29	23	22	14	28	28	29	173	2.3%	
3 a.m.	18	21	18	23	25	29	24	158	2.1%	
4 a.m.	26	22	25	32	33	19	27	184	2.4%	
5 a.m.	58	77	76	58	63	46	36	414	5.4%	
6 a.m.	110	110	108	95	79	69	49	620	8.1%	
7 a.m.	49	66	60	54	62	30	24	345	4.5%	
8 a.m.	49	47	30	30	31	23	24	234	3.1%	
9 a.m.	24	20	18	18	26	26	13	145	1.9%	
10 a.m.	11	13	11	20	19	12	25	111	1.5%	
11 a.m.	7	14	11	17	12	12	14	87	1.1%	
Noon	20	16	10	13	14	10	14	97	1.3%	
1 p.m.	5	8	8	10	17	13	14	75	1.0%	
2 p.m.	16	9	11	9	13	12	10	80	1.0%	
3 p.m.	10	11	16	14	11	12	20	94	1.2%	
4 p.m.	16	17	18	24	26	28	20	149	2.0%	
5 p.m.	58	61	57	66	71	40	47	400	5.2%	
6 p.m.	67	87	86	88	83	82	103	596	7.8%	
7 p.m.	74	96	77	84	120	86	86	623	8.2%	
8 p.m.	95	118	133	89	122	117	135	809	10.6%	
9 p.m.	105	119	87	108	127	114	112	772	10.1%	
10 p.m.	72	71	72	67	91	77	66	516	6.8%	
11 p.m.	50	44	53	48	71	59	50	375	4.9%	
Invalid Code	8	5	5	8	6	4	7	43	0.6%	
Missing Data	5	2	6	5	5	6	5	34	0.4%	
Total	Count	1,048	1,137	1,069	1,050	1,232	1,048	1,043	7,627	100%
	Percent	14%	15%	14%	14%	16%	14%	14%		100%

Animal-involved Crashes by Hour, 2013 – 2017



5. Percentage of Fatalities in Animal-involved Crashes by Drivers Under the Influence of Alcohol or Drugs, 2013 - 2017

Year	Alcohol-involved			Drug-involved		
	Fatal Crashes by Drivers Under the Influence of Alcohol	Drivers Under the Influence of Alcohol	Percent of Fatal Crashes by Drivers Under the Influence of Alcohol	Fatal Crashes by Drivers Under the Influence of Drugs	Drivers Under the Influence of Drugs	Percent of Fatal Animal-involved Crashes by Drivers Under the Influence of Drugs
2013	1	6	17%	0	0	0%
2014	0	7	0%	0	0	0%
2015	0	6	0%	0	6	0%
2016	0	3	0%	0	2	0%
2017	2	8	25%	0	1	0%
Total	3	30	10%	0	9	0%

6. People in Animal-involved Crashes by Severity of Injuries with Drivers Under the Influence of Alcohol, 2013 - 2017

Year	Fatalities (Class K)		Suspected Serious Injuries (Class A)		Suspected Minor Injuries (Class B)		Possible Injuries (Class C)		No Apparent Injuries (Class O)		People in Animal-involved Crashes by Severity of Injuries with Drivers Under the Influence of Alcohol	
	Count	Percent	Count	Percent	Count	Percent	Count	Percent	Count	Percent	Count	Percent
2013	1	33%	0	0%	0	0%	0	0%	6	20%	7	19%
2014	0	0%	0	0%	0	0%	1	50%	6	20%	7	19%
2015	0	0%	0	0%	1	50%	0	0%	9	30%	10	27%
2016	0	0%	0	0%	1	50%	0	0%	3	10%	4	11%
2017	2	67%	0	0%	0	0%	1	50%	6	20%	9	24%
Total	Count	3	0	0	2	2	2	2	30	37	100%	
	Percent	8%	0%	5%	5%	81%	100%					

7. People in Animal-involved Crashes by Severity of Injuries with Drivers Under the Influence of Drugs, 2013 - 2017

Year	Fatalities (Class K)		Suspected Serious Injuries (Class A)		Suspected Minor Injuries (Class B)		Possible Injuries (Class C)		No Apparent Injuries (Class O)		People in Animal-involved Crashes by Severity of Injuries with Drivers Under the Influence of Drugs	
	Count	Percent	Count	Percent	Count	Percent	Count	Percent	Count	Percent	Count	Percent
2013	0	0%	0	0%	0	0%	0	0%	0	0%	0	0%
2014	0	0%	0	0%	0	0%	0	0%	0	0%	0	0%
2015	0	0%	0	0%	0	0%	0	0%	6	67%	6	67%
2016	0	0%	0	0%	0	0%	0	0%	2	22%	2	22%
2017	0	0%	0	0%	0	0%	0	0%	1	11%	1	11%
Total	Count	0	0	0	0	0	0	0	9	9	100%	
	Percent	0%	0%	0%	0%	100%	100%					

8. People in Animal-involved Crashes with Drivers Under the Influence of Alcohol and Drugs by Age, 2013 - 2017

Age Group	People in Animal-involved Crashes with Drivers Under the Influence of Alcohol			People in Animal-involved Crashes with Drivers Under the Influence of Drugs			People in Animal-involved Crashes		
	Fatalities	Total	Percent	Fatalities	Total	Percent	Fatalities	Total	Percent
<15	0	0	0%	0	0	0%	0	7	0%
15-19	1	6	17%	0	4	0%	1	484	0%
20-24	0	5	0%	0	0	0%	0	1,253	0%
25-29	0	5	0%	0	0	0%	1	1,392	0%
30-34	0	2	0%	0	0	0%	0	1,232	0%
35-39	0	3	0%	0	1	0%	1	1,232	0%
40-44	0	1	0%	0	0	0%	0	1,266	0%
45-49	1	3	33%	0	1	0%	4	1,061	0%
50-54	0	5	0%	0	0	0%	1	1,088	0%
55-59	1	1	100%	0	0	0%	2	1,033	0%
60-64	0	2	0%	0	1	0%	2	822	0%
65-69	0	1	0%	0	2	0%	0	528	0%
70-74	0	2	0%	0	0	0%	0	358	0%
75 +	0	1	0%	0	0	0%	0	254	0%
Missing Data	0	0	0%	0	0	0%	0	276	0%
Total	3	37	8%	0	9	0%	12	12,286	0%

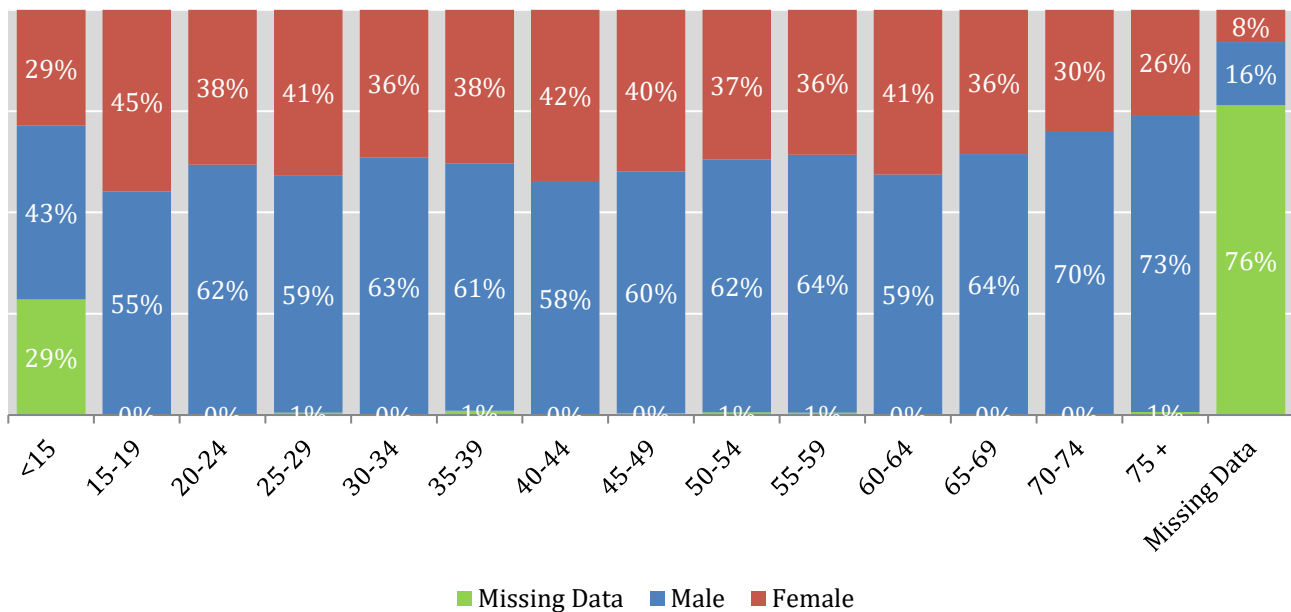
9. People in Animal-involved Crashes with Drivers Under the Influence of Alcohol and Drugs by Age and Sex, 2013 - 2017

Age Group	People in Animal-involved Crashes with Drivers Under the Influence of Alcohol							People in Animal-involved Crashes with Drivers Under the Influence of Drugs						
	Male			Female			Missing Data	Male			Female			Missing Data
	Killed	Total	%	Killed	Total	%		Killed	Total	%	Killed	Total	%	
<15	0	0	0%	0	0	0%	0	0	0	0%	0	0	0%	0
15-19	1	2	50%	0	4	0%	0	0	1	0%	0	3	0%	0
20-24	0	4	0%	0	1	0%	0	0	0	0%	0	0	0%	0
25-29	0	5	0%	0	0	0%	0	0	0	0%	0	0	0%	0
30-34	0	2	0%	0	0	0%	0	0	0	0%	0	0	0%	0
35-39	0	2	0%	0	1	0%	0	0	1	0%	0	0	0%	0
40-44	0	1	0%	0	0	0%	0	0	0	0%	0	0	0%	0
45-49	1	3	33%	0	0	0%	0	0	1	0%	0	0	0%	0
50-54	0	1	0%	0	4	0%	0	0	0	0%	0	0	0%	0
55-59	1	1	100%	0	0	0%	0	0	0	0%	0	0	0%	0
60-64	0	1	0%	0	1	0%	0	0	1	0%	0	0	0%	0
65-69	0	1	0%	0	0	0%	0	0	2	0%	0	0	0%	0
70-74	0	2	0%	0	0	0%	0	0	0	0%	0	0	0%	0
75 +	0	1	0%	0	0	0%	0	0	0	0%	0	0	0%	0
Missing Data	0	0	0%	0	0	0%	0	0	0	0%	0	0	0%	0
Total	3	26	12%	0	11	0%	0	0	6	0%	0	3	0%	0

10. People in Animal-involved Crashes by Age Group and Sex, 2013 - 2017

Age Group	Male		Female		Missing Data		Animal-involved Crashes	
	Count	Percent	Count	Percent	Count	Percent	Count	Percent
<15	3	43%	2	29%	2	29%	7	0%
15-19	267	55%	217	45%	0	0%	484	4%
20-24	772	62%	479	38%	2	0%	1,253	10%
25-29	816	59%	568	41%	8	1%	1,392	11%
30-34	781	63%	449	36%	2	0%	1,232	10%
35-39	752	61%	467	38%	13	1%	1,232	10%
40-44	729	58%	535	42%	2	0%	1,266	10%
45-49	633	60%	423	40%	5	0%	1,061	9%
50-54	679	62%	402	37%	7	1%	1,088	9%
55-59	658	64%	369	36%	6	1%	1,033	8%
60-64	487	59%	334	41%	1	0%	822	7%
65-69	340	64%	188	36%	0	0%	528	4%
70-74	251	70%	107	30%	0	0%	358	3%
75 +	186	73%	66	26%	2	1%	254	2%
Missing Data	43	16%	22	8%	211	76%	276	2%
Total	Count	7,397	4,628	261	12,286			
	Percent	60%	38%	2%	100%			

People in Animal-involved Crashes by Age Group and Sex, 2013 - 2017



11. People in Animal-involved Crashes by Hit-and-Run, 2013 – 2017

Year	Hit-and-Run		Not a Hit-and-Run		Missing Data		Total Animal-involved Crashes	
	Count	Percent	Count	Percent	Count	Percent	Count	Percent
2013	31	18%	1,860	15%	95	91%	1,986	16%
2014	22	13%	2,316	19%	9	9%	2,347	19%
2015	22	13%	2,410	20%	0	0%	2,432	20%
2016	52	30%	2,539	21%	0	0%	2,591	21%
2017	46	27%	2,884	24%	0	0%	2,930	24%
Total	Count	173	12,009		104		12,286	100%
	Percent	1%	98%		1%		100%	

12. People in Animal-involved Crashes by Severity of Injuries and Light Conditions, 2013 – 2017

Light Conditions	Fatalities (Class K)		Suspected Serious Injuries (Class A)		Suspected Minor Injuries (Class B)		Possible Injuries (Class C)		No Apparent Injuries (Class O)		Total People in Animal-involved Crashes	
	Count	Percent	Count	Percent	Count	Percent	Count	Percent	Count	Percent	Count	Percent
Daylight	1	8%	10	43%	82	24%	99	18%	2,446	22%	2,638	21%
Dark-Lighted	0	0%	0	0%	17	5%	31	6%	796	7%	844	7%
Dark-Not Lighted	11	92%	11	48%	229	66%	388	69%	7,061	62%	7,700	63%
Dusk	0	0%	2	9%	8	2%	8	1%	330	3%	348	3%
Dawn	0	0%	0	0%	7	2%	31	6%	606	5%	644	5%
Others	0	0%	0	0%	0	0%	0	0%	51	0%	51	0%
Missing Data	0	0%	0	0%	2	1%	3	1%	56	0%	61	0%
Total	Count	12	23		345		560		11,346		12,286	100%
	Percent	0%	0%		3%		5%		92%		100%	

13. People in Animal-involved Crashes by Severity of Injuries and Road Conditions, 2013 – 2017

Road Conditions	Fatalities (Class K)		Suspected Serious Injuries (Class A)		Suspected Minor Injuries (Class B)		Possible Injuries (Class C)		No Apparent Injuries (Class O)		Total People in Animal-involved Crashes	
	Count	Percent	Count	Percent	Count	Percent	Count	Percent	Count	Percent	Count	Percent
Dry	12	100%	21	91%	322	93%	534	95%	10,485	92%	11,374	93%
Wet	0	0%	1	4%	10	3%	24	4%	554	5%	589	5%
Loose Material	0	0%	0	0%	3	1%	2	0%	32	0%	37	0%
Ice	0	0%	0	0%	0	0%	0	0%	22	0%	22	0%
Snow	0	0%	0	0%	5	1%	0	0%	25	0%	30	0%
Others	0	0%	0	0%	1	0%	0	0%	74	1%	75	1%
Missing Data	0	0%	1	4%	4	1%	0	0%	154	1%	159	1%
Total	Count	12	23		345		560		11,346		12,286	100%
	Percent	0%	0%		3%		5%		92%		100%	

14. People in Animal-involved Crashes by Severity of Injuries and Road Surface, 2013 - 2017

Road Surface	Fatalities (Class K)		Suspected Serious Injuries (Class A)		Suspected Minor Injuries (Class B)		Possible Injuries (Class C)		No Apparent Injuries (Class O)		Total People in Animal-involved Crashes	
	Count	Percent	Count	Percent	Count	Percent	Count	Percent	Count	Percent	Count	Percent
Paved Center and Edge	8	67%	14	61%	281	81%	435	78%	9,053	80%	9,791	80%
Paved Unstriped	4	33%	5	22%	27	8%	38	7%	556	5%	630	5%
Paved Center Stripe	0	0%	3	13%	27	8%	76	14%	1,403	12%	1,509	12%
Unpaved	0	0%	0	0%	4	1%	10	2%	114	1%	128	1%
Missing Data	0	0%	1	4%	6	2%	1	0%	220	2%	228	2%
Total	Count	12	23	345	560	11,346	12,286	100%				
	Percent	0%	0%	3%	5%	92%	100%					

15. People in Animal-involved Crashes by Severity of Injuries and Traffic Control Device, 2013 - 2017

Traffic Control Device	Fatalities (Class K)		Suspected Serious Injuries (Class A)		Suspected Minor Injuries (Class B)		Possible Injuries (Class C)		No Apparent Injuries (Class O)		Total People in Animal-involved Crashes	
	Count	Percent	Count	Percent	Count	Percent	Count	Percent	Count	Percent	Count	Percent
No Controls	11	92%	13	57%	267	77%	431	77%	8,449	74%	9,171	75%
Traffic Signals	0	0%	0	0%	0	0%	10	2%	77	1%	87	1%
Stop Sign	0	0%	0	0%	0	0%	0	0%	14	0%	14	0%
No Passing Zone	1	8%	4	17%	29	8%	54	10%	1,188	10%	1,276	10%
4-Way Stop	0	0%	0	0%	0	0%	0	0%	6	0%	6	0%
Others	0	0%	4	17%	43	12%	57	10%	1,195	11%	1,299	11%
Missing Data	0	0%	2	9%	6	2%	8	1%	417	4%	433	4%
Total	Count	12	23	345	560	11,346	12,286	100%				
	Percent	0%	0%	3%	5%	92%	100%					

16. People in Animal-involved Crashes by Severity of Injuries and Road Design Lanes, 2013 - 2017

Road Design Lanes	Fatalities (Class K)		Suspected Serious Injuries (Class A)		Suspected Minor Injuries (Class B)		Possible Injuries (Class C)		No Apparent Injuries (Class O)		Total People in Animal-involved Crashes	
	Count	Percent	Count	Percent	Count	Percent	Count	Percent	Count	Percent	Count	Percent
Two Lanes	5	42%	6	26%	181	52%	308	55%	5,918	52%	6,418	52%
One Lane	6	50%	13	57%	116	34%	188	34%	3,975	35%	4,298	35%
Three Lanes	1	8%	0	0%	2	1%	6	1%	148	1%	157	1%
Four+ Lanes	0	0%	2	9%	30	9%	38	7%	658	6%	728	6%
Missing Data	0	0%	2	9%	16	5%	20	4%	647	6%	685	6%
Total	Count	12	23	345	560	11,346	12,286	100%				
	Percent	0%	0%	3%	5%	92%	100%					

17. People in Animal-involved Crashes by Severity of Injuries and Road Design Dividers, 2013 - 2017

Road Design Dividers	Fatalities (Class K)		Suspected Serious Injuries (Class A)		Suspected Minor Injuries (Class B)		Possible Injuries (Class C)		No Apparent Injuries (Class O)		Total People in Animal-involved Crashes	
	Count	Percent	Count	Percent	Count	Percent	Count	Percent	Count	Percent	Count	Percent
Painted Divider	5	42%	5	22%	115	33%	170	30%	3,532	31%	3,827	31%
Physical Divider	0	0%	2	9%	41	12%	38	7%	1,176	10%	1,257	10%
Undivided	3	25%	3	13%	24	7%	29	5%	564	5%	623	5%
Missing Data	4	33%	13	57%	165	48%	323	58%	6,074	54%	6,579	54%
Total	Count	12	23	345	560	11,346	12,286	100%				
	Percent	0%	0%	3%	5%	92%	100%					

18. People in Animal-involved Crashes by Severity of Injuries and Road Design, 2013 - 2017

Road Design	Fatalities (Class K)		Suspected Serious Injuries (Class A)		Suspected Minor Injuries (Class B)		Possible Injuries (Class C)		No Apparent Injuries (Class O)		Total People in Animal-involved Crashes	
	Count	Percent	Count	Percent	Count	Percent	Count	Percent	Count	Percent	Count	Percent
Freeway (Full Access)	7	58%	8	35%	141	41%	184	33%	3,749	33%	4,089	33%
One-Way	0	0%	3	13%	32	9%	64	11%	818	7%	917	7%
Construction Zone	0	0%	0	0%	0	0%	2	0%	33	0%	35	0%
Ramp	0	0%	0	0%	4	1%	0	0%	14	0%	18	0%
Alley	0	0%	0	0%	0	0%	0	0%	2	0%	2	0%
Others	4	33%	6	26%	74	21%	119	21%	2,793	25%	2,996	24%
Missing Data	1	8%	6	26%	94	27%	191	34%	3,937	35%	4,229	34%
Total	Count	12	23	345	560	11,346	12,286	100%				
	Percent	0%	0%	3%	5%	92%	100%					

19. People in Animal-involved Crashes by Severity of Injuries and Heavy-Truck Driver Actions, 2013 - 2017

Vehicle Actions	Fatalities (Class K)		Suspected Serious Injuries (Class A)		Suspected Minor Injuries (Class B)		Possible Injuries (Class C)		No Apparent Injuries (Class O)		Total People in Animal-involved Crashes	
	Count	Percent	Count	Percent	Count	Percent	Count	Percent	Count	Percent	Count	Percent
GoingStraight	12	100%	22	96%	308	89%	541	97%	10,545	93%	11,428	93%
LeftTurn	0	0%	0	0%	2	1%	1	0%	38	0%	41	0%
RightTurn	0	0%	0	0%	0	0%	1	0%	25	0%	26	0%
OvertakingPassing	0	0%	0	0%	0	0%	1	0%	24	0%	25	0%
Parked	0	0%	0	0%	0	0%	0	0%	15	0%	15	0%
Others	0	0%	0	0%	0	0%	1	0%	32	0%	33	0%
Missing Data	0	0%	1	4%	35	10%	15	3%	667	6%	718	6%
Total	Count	12	23	345	560	11,346	12,286	100%				
	Percent	0%	0%	3%	5%	92%	100%					

20. People in Animal-involved Crashes by Severity of Injuries and Animal Class, 2013 - 2017

Animal Crash	Fatalities (Class K)		Suspected Serious Injuries (Class A)		Suspected Minor Injuries (Class B)		Possible Injuries (Class C)		No Apparent Injuries (Class O)		Total People in Animal-involved Crashes	
	Count	Percent	Count	Percent	Count	Percent	Count	Percent	Count	Percent	Count	Percent
Deer	2	17%	10	43%	100	29%	218	39%	6,295	55%	6,625	54%
Elk	1	8%	3	13%	86	25%	93	17%	1,589	14%	1,772	14%
Elow/Cattle	3	25%	1	4%	61	18%	123	22%	1,190	10%	1,378	11%
Dog	0	0%	3	13%	25	7%	26	5%	655	6%	709	6%
Horse	4	33%	3	13%	25	7%	40	7%	321	3%	393	3%
Coyote	0	0%	0	0%	5	1%	4	1%	285	3%	294	2%
Bear	0	0%	0	0%	4	1%	14	3%	165	1%	183	1%
Game Animal	0	0%	0	0%	6	2%	6	1%	133	1%	145	1%
Antelope	0	0%	0	0%	1	0%	6	1%	134	1%	141	1%
Rat	0	0%	0	0%	3	1%	1	0%	48	0%	52	0%
Others	0	0%	3	13%	25	7%	23	4%	391	3%	442	4%
Missing Data	2	17%	0	0%	4	1%	6	1%	140	1%	152	1%
Total	Count	12	23	345	560	11,346	12,286	100%				
	Percent	0.10%	0.19%	2.81%	4.56%	92%	100%					

21. People in Animal-involved Crashes by Severity of Injuries and Agency, 2013 - 2017

Law Enforcement Agency	Fatalities (Class K)		Suspected Serious Injuries (Class A)		Suspected Minor Injuries (Class B)		Possible Injuries (Class C)		No Apparent Injuries (Class O)		Total People in Animal-involved Crashes	
	Count	Percent	Count	Percent	Count	Percent	Count	Percent	Count	Percent	Count	Percent
New Mexico State Police (NmSP)	10	83%	9	39%	175	51%	198	35%	4,873	43%	5,265	43%
San Juan County Sheriffs Office	0	0%	0	0%	9	3%	24	4%	591	5%	624	5%
Eddy County Sheriffs Department	0	0%	1	4%	4	1%	25	4%	453	4%	483	4%
Sandoval County Sheriffs Office	0	0%	2	9%	18	5%	17	3%	359	3%	396	3%
Santa Fe County Sheriffs Office	0	0%	0	0%	2	1%	22	4%	280	2%	304	2%
Others	2	17%	11	48%	137	40%	274	49%	4,790	42%	5,214	42%
Total	Count	12	23	345	560	11,346	12,286	100%				
	Percent	0%	0%	3%	5%	92%	100%					

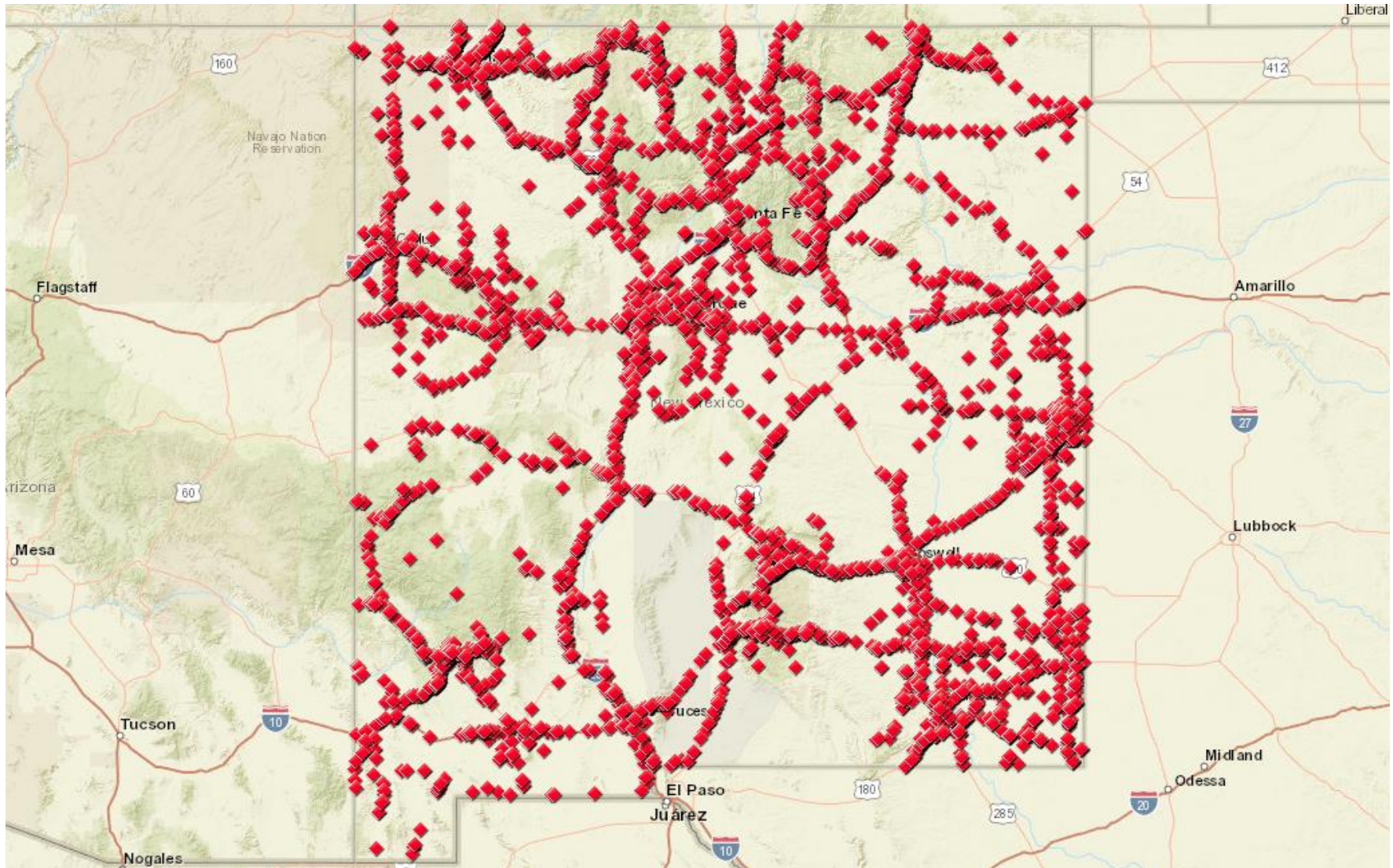
22. People in Animal-involved Crashes by Severity of Injuries and City, 2013 - 2017

Cities	Fatalities (Class K)		Suspected Serious Injuries (Class A)		Suspected Minor Injuries (Class B)		Possible Injuries (Class C)		No Apparent Injuries (Class O)		Total People in Animal-involved Crashes	
	Count	Percent	Count	Percent	Count	Percent	Count	Percent	Count	Percent	Count	Percent
Silver City	0	0%	0	0%	5	1%	9	2%	305	3%	319	2.6%
Farmington	0	0%	0	0%	1	0%	10	2%	301	3%	312	2.5%
Carlsbad	1	8%	0	0%	1	0%	2	0%	209	2%	213	1.7%
Aztec	0	0%	0	0%	6	2%	7	1%	196	2%	209	1.7%
Ruidoso	0	0%	0	0%	1	0%	4	1%	204	2%	209	1.7%
Raton	0	0%	0	0%	2	1%	3	1%	171	2%	176	1.4%
Arenas Valley	0	0%	0	0%	2	1%	1	0%	155	1%	158	1.3%
Albuquerque	0	0%	0	0%	8	2%	6	1%	131	1%	145	1.2%
Cedar Hill	0	0%	0	0%	0	0%	2	0%	110	1%	112	0.9%
Cuba	0	0%	2	9%	2	1%	5	1%	97	1%	106	0.9%
Santa Fe	0	0%	1	4%	0	0%	5	1%	95	1%	101	0.8%
Chama	0	0%	0	0%	0	0%	2	0%	79	1%	81	0.7%
Bloomfield	0	0%	0	0%	2	1%	1	0%	78	1%	81	0.7%
Clovis	0	0%	0	0%	1	0%	10	2%	66	1%	77	0.6%
Gallup	0	0%	0	0%	1	0%	2	0%	70	1%	73	0.6%
Roswell	0	0%	0	0%	2	1%	3	1%	62	1%	67	0.5%
Bent	0	0%	0	0%	2	1%	3	1%	62	1%	67	0.5%
Las Cruces	0	0%	0	0%	2	1%	0	0%	61	1%	63	0.5%
Edgewood	0	0%	0	0%	0	0%	2	0%	61	1%	63	0.5%
Zuni Pueblo	0	0%	0	0%	2	1%	11	2%	48	0%	61	0.5%
Dulce	0	0%	0	0%	1	0%	3	1%	55	0%	59	0.5%
Kirtland	0	0%	0	0%	0	0%	3	1%	50	0%	53	0.4%
Springer	0	0%	0	0%	0	0%	4	1%	46	0%	50	0.4%
Ruidoso Downs	0	0%	0	0%	0	0%	0	0%	50	0%	50	0.4%
Glorieta	0	0%	0	0%	1	0%	1	0%	48	0%	50	0.4%
Cloudcroft	0	0%	0	0%	3	1%	2	0%	42	0%	47	0.4%
Tucumcari	0	0%	1	4%	1	0%	2	0%	43	0%	47	0.4%
High Rolls Mt Park	0	0%	2	9%	1	0%	2	0%	41	0%	46	0.4%
Tesuque	0	0%	0	0%	0	0%	2	0%	44	0%	46	0.4%
Thoreau	0	0%	0	0%	0	0%	9	2%	37	0%	46	0.4%
Missing Data	8	67%	12	52%	207	60%	292	52%	5,754	51%	6,273	51.1%
All Other Cities	3	25%	5	22%	91	26%	152	27%	2,575	23%	2,826	23.0%
Total	Count	12	23	345	560	11,346	12,286	100%				
	Percent	0%	0%	3%	5%	92%	100%					

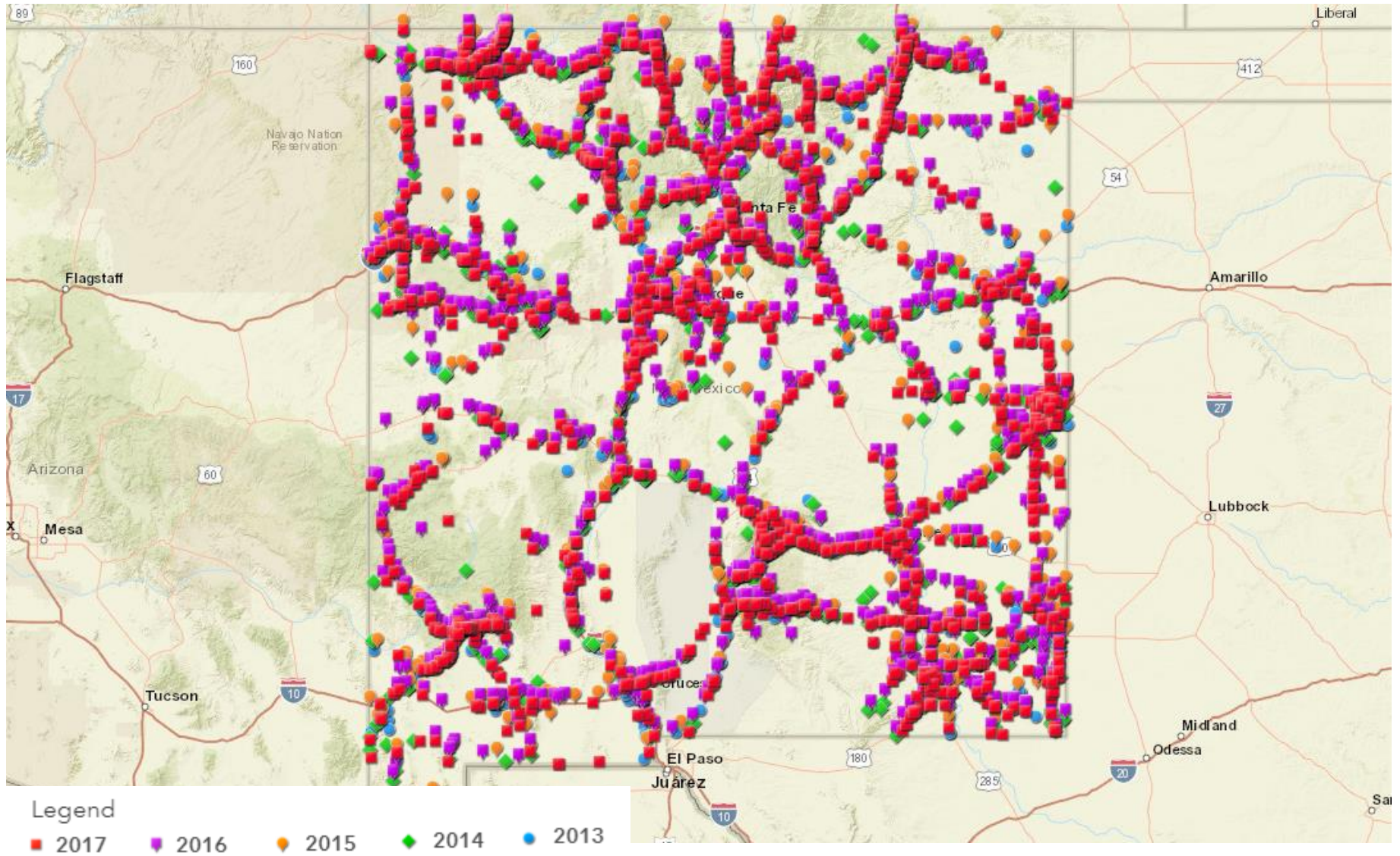
23. People in Animal-involved Crashes by Severity of Injuries and County, 2013 - 2017

County	Fatalities (Class K)	Suspected Serious Injuries (Class A)	Suspected Minor Injuries (Class B)	Possible Injuries (Class C)	No Apparent Injuries (Class O)	Total People in Animal- involved Crashes		
						Count	Percent	
Bernalillo	0	0	14	9	216	239	2%	
Catron	1	1	5	2	114	123	1%	
Chaves	0	0	3	7	447	457	4%	
Cibola	0	1	30	21	260	312	3%	
Colfax	0	2	31	38	751	822	7%	
Curry	0	0	5	20	179	204	2%	
De Baca	0	0	1	1	63	65	1%	
Dofia Ana	2	0	10	4	195	211	2%	
Eddy	1	1	7	28	662	699	6%	
Grant	0	0	13	23	1,036	1,072	9%	
Guadalupe	0	0	3	3	134	140	1%	
Harding	0	0	1	0	30	31	0%	
Hidalgo	0	0	5	10	100	115	1%	
Lea	1	1	19	20	373	414	3%	
Left Blank	0	0	0	0	1	1	0%	
Lincoln	0	2	22	17	795	836	7%	
Los Alamos	0	0	2	2	36	40	0%	
Luna	0	0	4	12	163	179	1%	
McKinley	0	2	14	43	513	572	5%	
Mora	3	0	8	11	177	199	2%	
Otero	1	3	14	21	528	567	5%	
Quay	0	1	4	4	196	205	2%	
Rio Arriba	0	2	28	47	869	946	8%	
Roosevelt	0	0	7	14	221	242	2%	
San Juan	0	0	30	69	1,167	1,266	10%	
San Miguel	0	0	13	24	304	341	3%	
Sandoval	0	2	23	23	491	539	4%	
Santa Fe	1	1	4	28	484	518	4%	
Sierra	0	0	4	13	107	124	1%	
Socorro	0	0	11	9	217	237	2%	
Taos	2	2	5	14	247	270	2%	
Torrance	0	0	4	16	105	125	1%	
Union	0	0	0	3	93	96	1%	
Valencia	0	2	1	4	72	79	1%	
Total	Count	12	23	345	560	11,346	12,286	100%
	Percent	11%	17%	32%	29%	10%	100%	

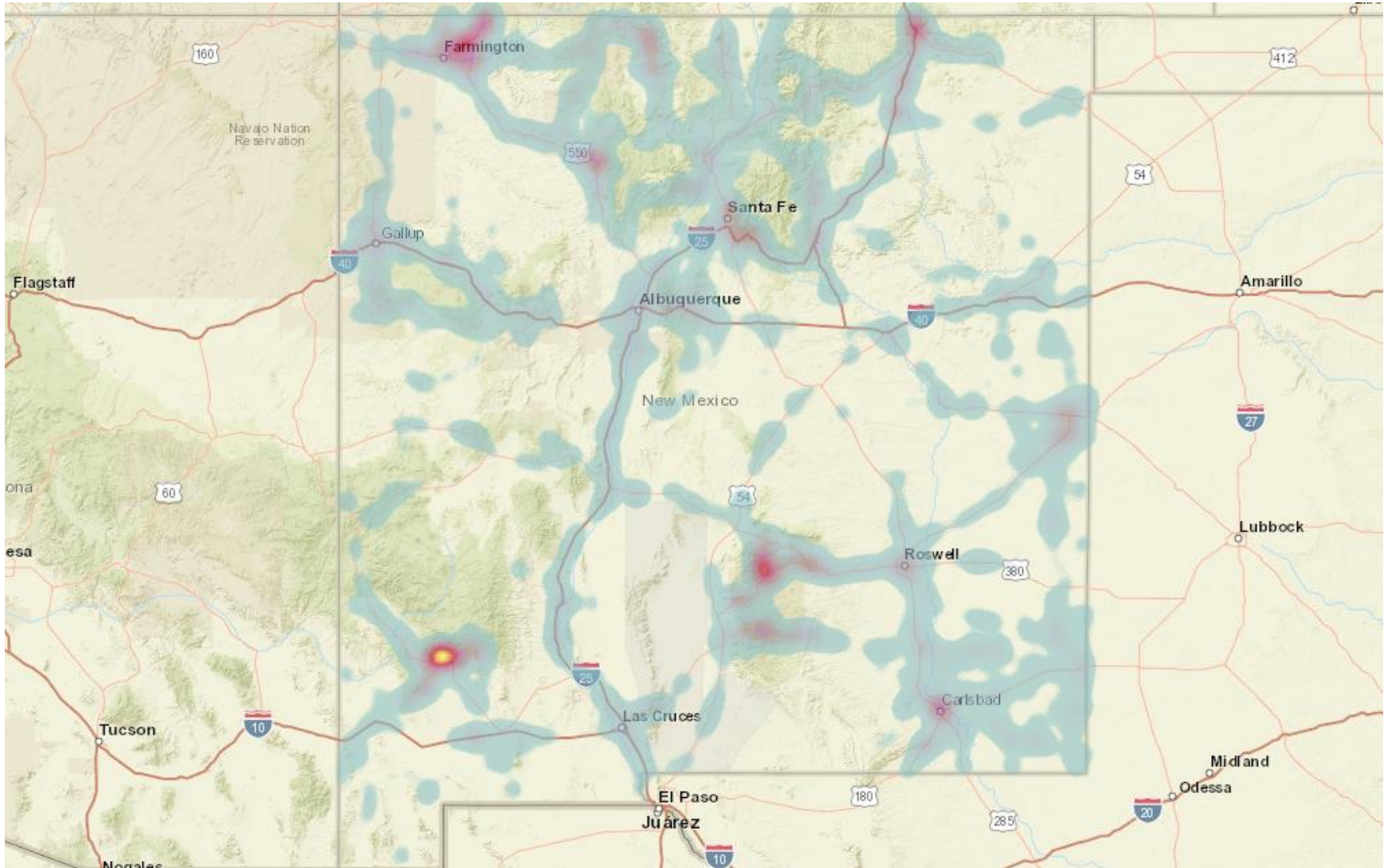
Map 1: Animal-involved Crashes, 2013-2017



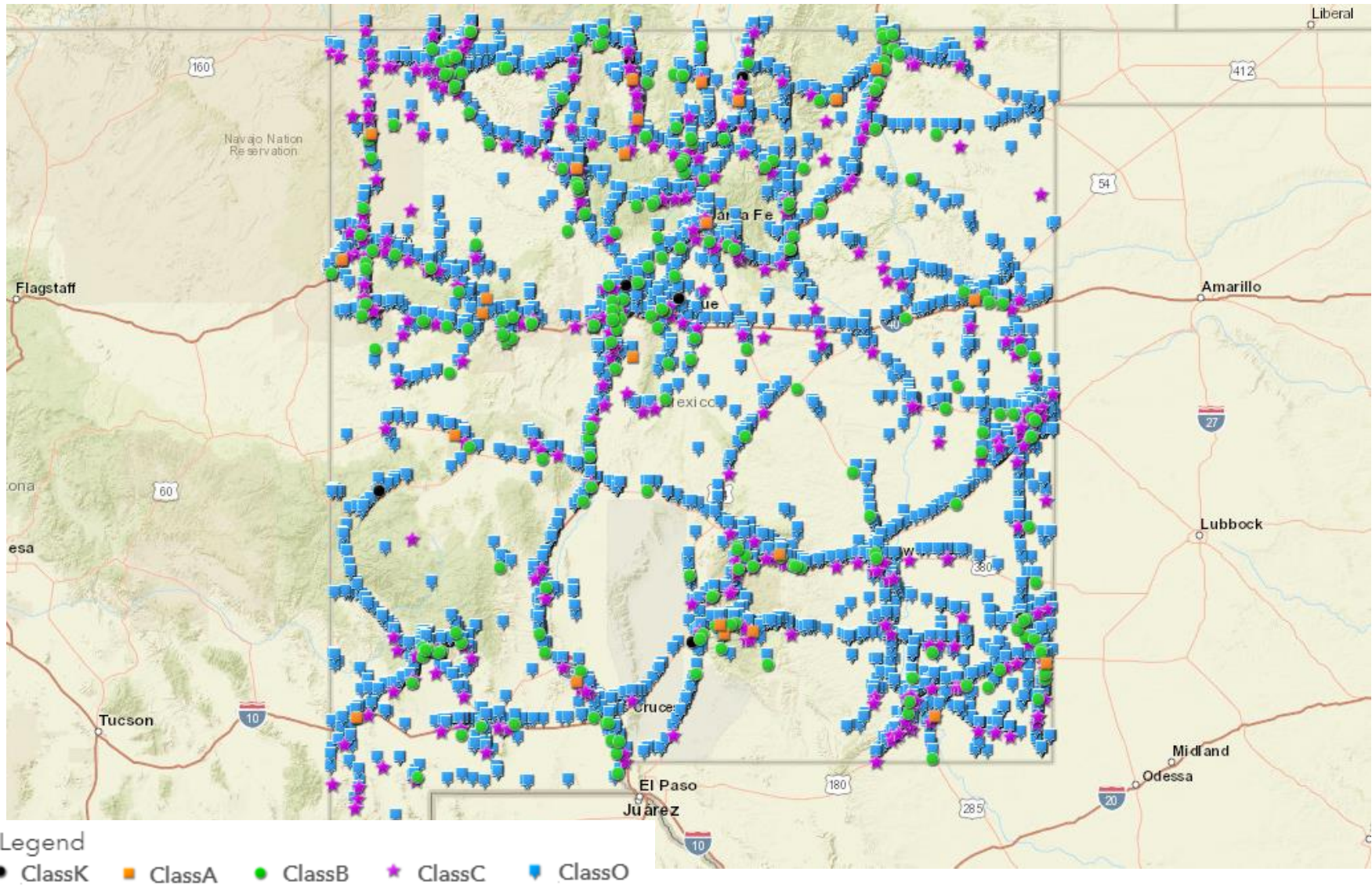
Map 2: Animal-involved Crashes by Year



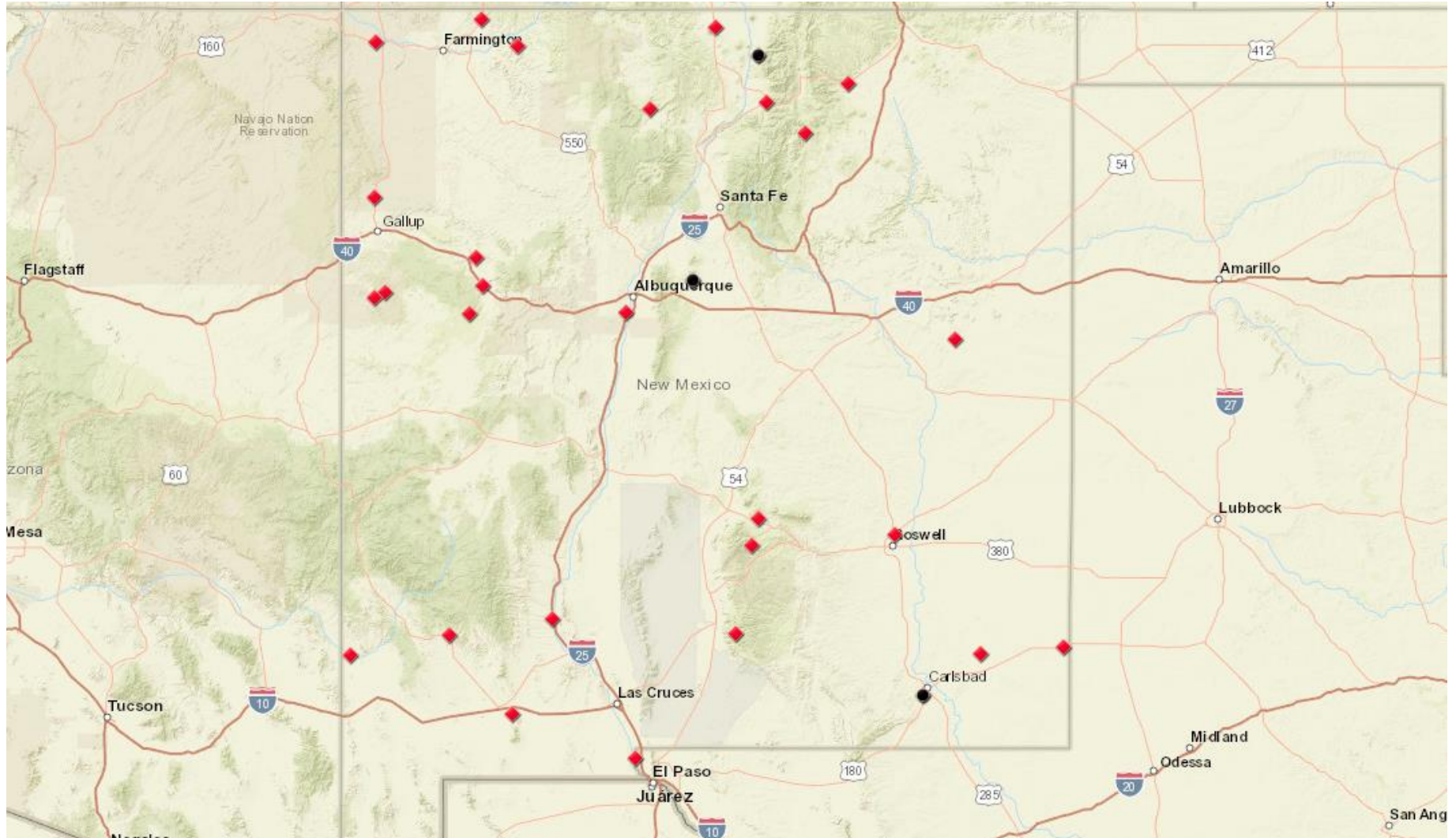
Map 3: Animal-involved Crashes – Density Map, 2013-2017



Map 4: Animal-involved Crashes by Severity of Injury, 2013-2017



Map 5: Fatalities in Animal-involved Crashes by Drivers Under the Influence of Alcohol, 2013-2017



Legend ● AlcoholInvolved-Fatality ◆ AlcoholInvolved

Map 6: Location with Highest Number of Animal-involved Crashes, 2013-2017: San Juan County

