

# New Mexico Motorcycle-involved Crash Statistics, 2013 – 2017



Produced for the New Mexico Department of Transportation,



Traffic Safety Division, Traffic Records Bureau, under Contract C06100  
Produced by the University of New Mexico Geospatial and Population Studies,  
Traffic Research Unit  
<https://gps.unm.edu/tru>

Distributed in compliance with New Mexico Statute 66-7-214  
as a reference source regarding New Mexico traffic crashes

#### Source:

Crash data are from the NMDOT Uniform Crash Reports (UCR), submitted by law enforcement agencies in the state, for any incident on a public roadway involving one or more motor vehicles that resulted in death, injury, or at least \$500 in property damage. These reports are processed by the NMDOT Traffic Records Program, and analyzed by the University of New Mexico, Geospatial and Population Studies (GPS), Traffic Research Unit (TRU).

The NMDOT Crash Database, as of March 25, 2019, was used for this report.

#### Disclaimer:

NMDOT crash data is protected by the federal mandate Title 23 U.S.C. Section 409, which forbids the discovery and admission into evidence of reports, data, or other information compiled or collected for activities required pursuant to Federal highway safety programs, or for the purpose of developing any highway safety construction improvement project, which may be implemented utilizing federal-aid highway funds, in tort litigation arising from occurrences at the locations addressed in such documents or data.

For the purposes of this report, data are compiled by the University of New Mexico, Geospatial and Population Studies, Traffic Research Unit (TRU), on behalf of the New Mexico Department of Transportation (NMDOT). Data in this report may differ from that in other data sources, such as the Federal Fatality Analysis Reporting System (FARS), due to the timing of publications and rules for how data are compiled and maintained in Federal vs. State databases. If you have questions regarding this report, please contact the Traffic Safety Division at 505-827-0427.

## Table of Contents

1. Motorcycle-involved Crashes and Fatalities, 2013 – 2017 .....	6
2. People in Motorcycle-involved Crashes by Severity of Injuries, 2013 – 2017.....	7
3. Motorcyclists-involved Crashes by Month and Day, 2013 – 2017 .....	8
4. Motorcycle-involved Crashes by Hour and Day of Week, 2013 – 2017 .....	9
5. Percentage of Fatal Crashes by Motorcyclists Under the Influence of Alcohol or Drugs, 2013 – 2017.....	10
6. People in Crashes, by Severity of Injuries, with Motorcyclists Under the Influence of Alcohol, 2013 – 2017 .....	10
7. People in Crashes, by Severity of Injuries, with Motorcyclists Under the Influence of Drugs, 2013 – 2017 .....	10
8. People in Crashes with Motorcyclists Under the Influence of Alcohol or Drugs, by Age, 2013 – 2017.....	11
9. People in Crashes with Motorcyclists Under the Influence of Alcohol or Drugs, by Age and Sex, 2013 – 2017 .....	11
10. Motorcyclists in Alcohol-involved Crashes, 2013 – 2017 .....	12
11. Motorcyclists in Drug-involved Crashes, 2013 – 2017 .....	12
12. Motorcycle-involved Crashes by Age Group and Sex, 2013 – 2017.....	13
13. Motorcycle-involved Crashes by Hit-and-Run, 2013 – 2017 .....	14
14. People in Motorcycle-involved Crashes by Severity of Injury and Light Condition, 2013 – 2017.....	14
15. People in Motorcycle-involved Crashes by Severity of Injury and Road Condition, 2013 – 2017 .....	15
16. People in Motorcycle-involved Crashes by Severity of Injury and Road Surface, 2013 – 2017 .....	15
17. People in Motorcycle-involved Crashes by Severity of Injury and Traffic Control Device, 2013 – 2017 ...	15
18. People in Motorcycle-involved Crashes by Severity of Injury and Road Design Lanes, 2013 – 2017 .....	16
19. People in Motorcycle-involved Crashes by Severity of Injury and Road Design Dividers, 2013 – 2017 ....	16
20. Motorcyclists in Crashes by Severity of Injury and Road Design, 2013 – 2017.....	16
21. People in Motorcycle-involved Crashes by Severity of Injury and Driver Action, 2013 – 2017 .....	17
22. People in Motorcycle -involved Crashes by Severity of Injury and Agency, 2013 – 2017.....	17
23. People in Motorcycle -involved Crashes by Severity of Injury and City, 2013 – 2017 .....	18
24. People in Motorcycle -involved Crashes by Severity of Injury and County, 2013 – 2017.....	19
Map 1: Motorcycle-involved Crashes, 2013 – 2017 .....	20
Map 2: Motorcycle -involved Crashes by Year, 2013 – 2017 .....	21
Map 3: Motorcycle -involved Crashes Density Map, 2013 – 2017 .....	22
Map 4: Motorcycle -involved Crashes by Severity of Injuries, 2013 – 2017 .....	23
Map 5: Fatal Crashes by Motorcyclists Under the Influence of Alcohol, 2013 – 2017 .....	24
Map 6: Location with Highest Number of Motorcycle-involved Crashes, 2013 – 2017: Albuquerque .....	25

## Definitions

**Alcohol-involved Crash** – A crash for which the Uniform Crash Report (UCR) indicated that 1) a DWI citation was issued, 2) alcohol was a contributing factor, or 3) a person in control of a vehicle was suspected of being under the influence of alcohol. Alcohol-involved crashes involve one or more alcohol-involved drivers.

**Alcohol-involved Driver** – A person in control of a motor vehicle who was cited for DWI or indicated on the Uniform Crash Report as either suspected or determined by testing to be under the influence of alcohol. A single alcohol-involved crash can involve multiple alcohol-involved drivers.

**Crash** – A reported incident on a public roadway involving one or more motor vehicles that resulted in death, personal injury, or at least \$500 in property damage. Crashes on private property (such as a parking lot) are not included.

**Contributing Factor** – Conditions or actions which may have contributed to the crash. Reported in the Apparent Contributing Factors section of the crash report. Multiple contributing factors may be reported for any vehicle in a crash.

**Driver** – A person in control of a motor vehicle. Pedestrians and pedalcyclists are classified as drivers of non-motorized vehicles.

**Drug-involved Crash** – A crash for which the Uniform Crash Report indicated that 1) a DWI citation was issued, 2) a drug was a contributing factor, or 3) a person in control of a vehicle was suspected of being under the influence of drugs. Drug-involved crashes involve one or more drug-involved drivers.

**Drug-involved Driver** – A person in control of a motor vehicle who was cited for DWI or indicated on the Uniform Crash Report as either suspected or determined by testing to be under the influence of drugs. A single drug-involved crash can involve multiple drug-involved drivers.

**Fatal Crash** – A crash in which at least one person was killed. Note that more than one person can be killed in a single fatal crash.

**Fatalities** – The number of people killed in a crash. The terms *killed* and *deaths* are synonymous with *fatalities*. A fatality is crash related if it occurs at the time of the crash or if the person(s) involved in the crash dies within 30 days.

**Injuries** – The number of people injured in a crash, in contrast to the number of crashes in which people were injured. This includes Suspected Serious Injuries (Class A), Suspected Minor Injuries (Class B) and Possible Injuries (Class C). Counts consist of people injured but not killed.

**Injury Crash** – A reported crash in which at least one person was injured. Injury crashes involve at least one Suspected Serious Injury (Class A), Suspected Minor Injury (Class B) or Possible Injury (Class C). Fatal crashes are not included in this category.

**Missing Data** – An indication that the applicable field on the Uniform Crash Report form was left blank or contained an invalid code. Starting with crashes that occurred in 2012, improvements in the identification of missing data in the NMDOT crash database led to an increase in the reported amount of missing data.

**Motorcycle** – A motorcycle is a motor vehicle having a seat or saddle and designed to travel on not more than three wheels.

**Motorcyclist** – A person riding a motorcycle.

**Motorcycle-involved Crash** – A crash involves one or more motorcycles.

**Motorcyclist in Alcohol- or Drug-involved Crash** – A motorcyclist in a crash for which the Uniform Crash Report indicated that 1) a DWI citation was issued, 2) alcohol was a contributing factor, or 3) a person in control of a vehicle (including a pedestrian or motorcyclist) was suspected of being under the influence of alcohol or drugs. Alcohol or drug-involved crashes involve one or more alcohol or drug-involved drivers.

**Motorcyclist Under the Influence of Alcohol or Drugs** – A motorcyclist who was cited for DWI or indicated on the Uniform Crash Report as either suspected or determined by testing to be under the influence of alcohol or drugs. A single alcohol or drug-involved crash can involve multiple alcohol or drug-involved drivers.

**Possible Injury** – An injury reported or claimed which is not a fatal, Suspected Serious or Suspected Minor Injury. Possible injuries are those which are reported by the person or are indicated by his or her behavior, but no wounds or injuries are readily evident (a.k.a. Class C Injury, Complaint of Injury, or Non-visible Injury). Examples include momentary loss of consciousness, claim of injury, limping, or complaint of pain or nausea.

**Property Damage Only Crash (PDO)** – A reported crash on a public road that did not involve injuries or fatalities but resulted in more than \$500 in property damage only (a.k.a. a Class O crash).

**Serious Injury** – A Suspected Serious Injury.

**Severity of Injury** – The degree of injury to a person in a crash as described by the KABCO scale: K is for Killed, ABC indicate injuries (A=Suspected Serious Injury, B=Suspected Minor Injury, C=Possible Injury), and O indicates No Apparent Injuries (property damage only).

**Suspected Minor Injury** – A visible but not serious injury, such as abrasions, bruises and minor lacerations, as observed by the officer at the scene of the crash. Also known as a Class B Injury or a Visible Injury.

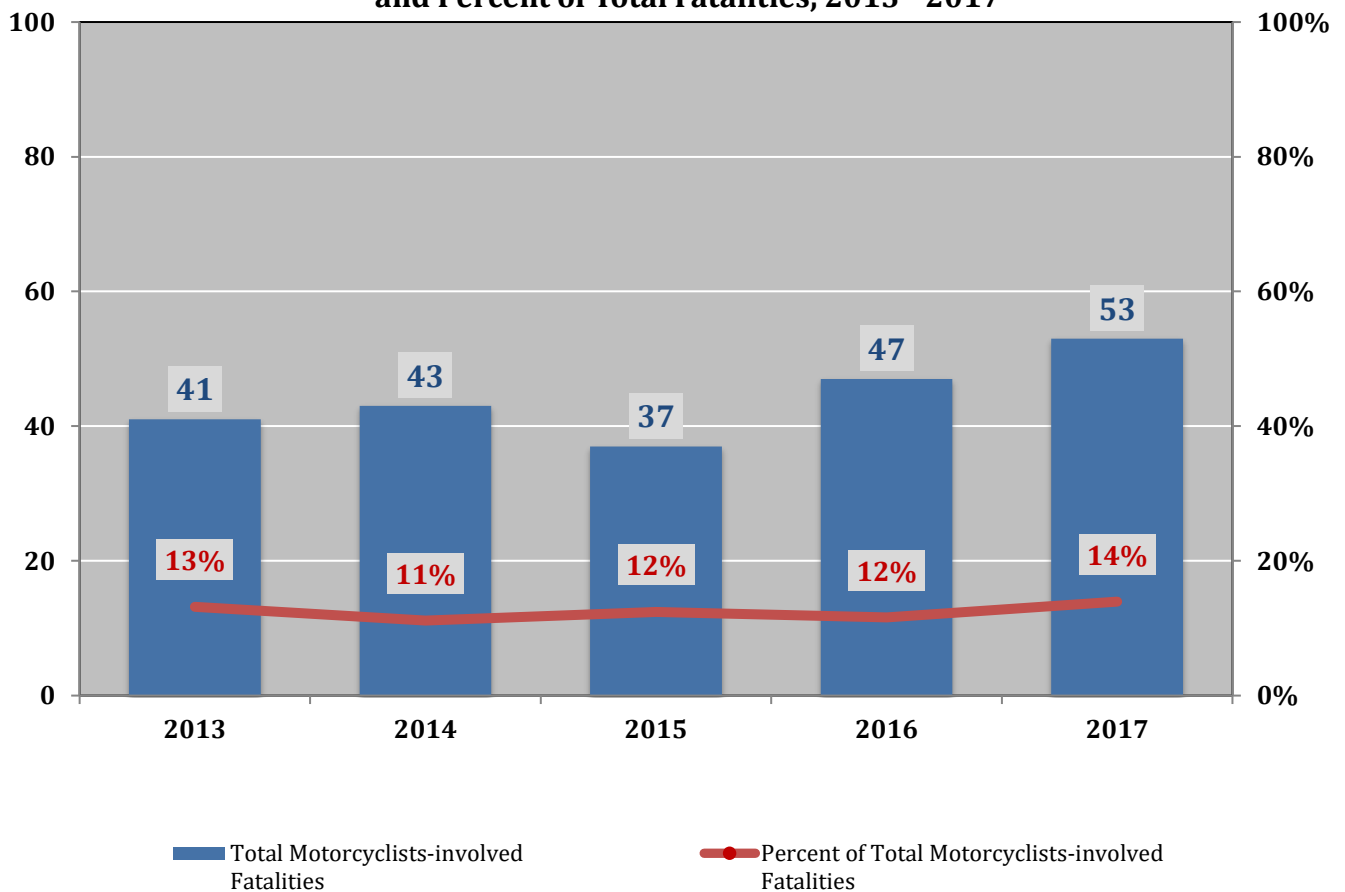
**Suspected Serious Injury** – An injury, other than a fatal injury, in which the person was carried from the scene of the crash or in which the injured person was unable to walk, drive or perform normal activities he or she was capable of performing before the injury occurred, as observed by the officer at the scene of the crash. Also known as a Class A Injury or an Incapacitating Injury.

**Vehicle** – A motorized car, truck, bus, van, or motorcycle (mechanically or electrically powered) for carrying or transporting persons or things. Pedestrians and pedalcyclists are counted as nonmotorized vehicles when in a crash with a motor vehicle.

### 1. Motorcycle-involved Crashes and Fatalities, 2013 - 2017

Year	Crashes		Percent of Total Motorcycle-involved Crashes	Fatalities		Percent of Total Motorcycle-involved Fatalities
	Motorcycle-involved Crashes	Total Crashes		Motorcycle-involved Fatalities	Total Fatalities	
2013	1,119	39,208	2.9%	41	311	13%
2014	1,134	40,690	2.8%	43	386	11%
2015	1,131	45,308	2.5%	37	298	12%
2016	1,118	45,071	2.5%	47	405	12%
2017	1,144	45,906	2.5%	53	380	14%
<b>Total</b>	<b>5,646</b>	<b>216,183</b>	<b>2.6%</b>	<b>221</b>	<b>1,780</b>	<b>12%</b>

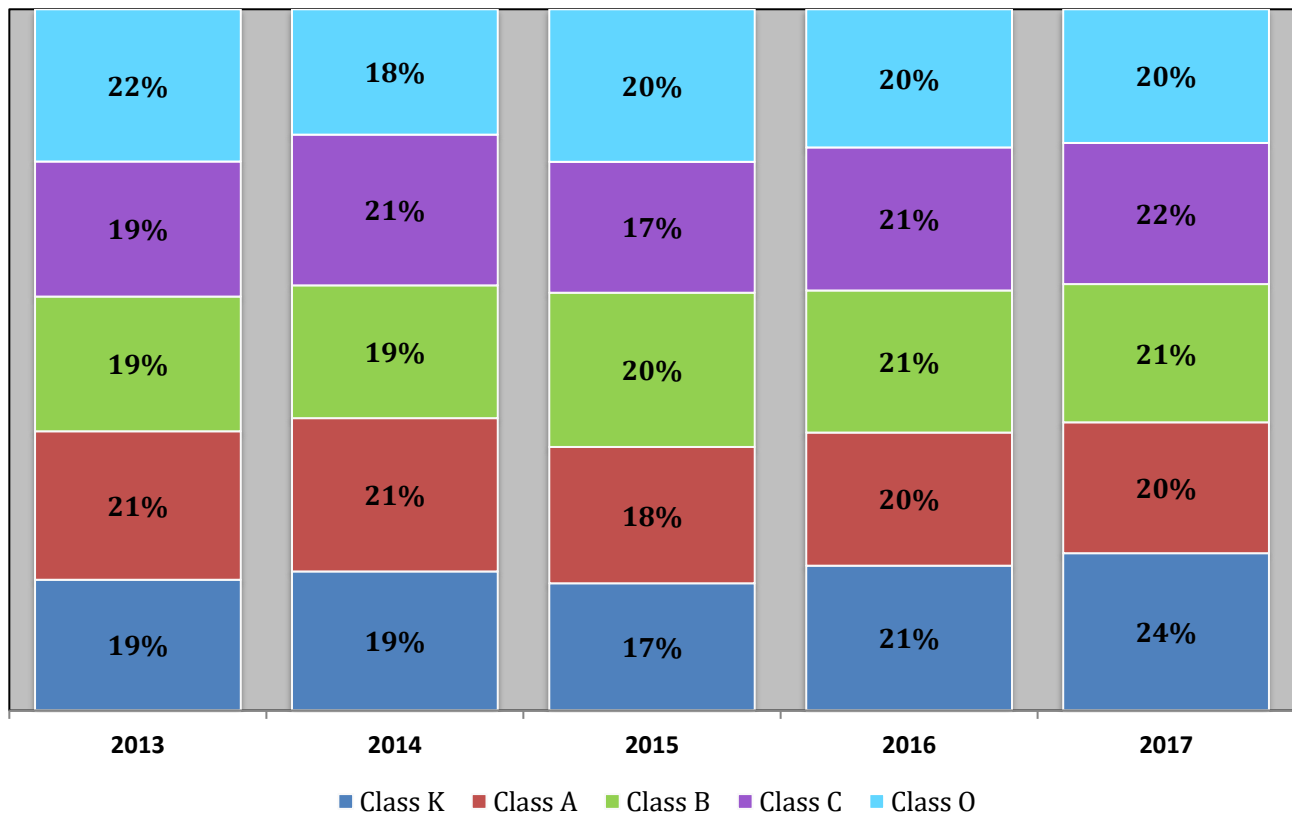
**Total Motorcycle-involved Fatalities and Percent of Total Fatalities, 2013 - 2017**



## 2. People in Motorcycle-involved Crashes by Severity of Injuries, 2013 - 2017

Year	Fatalities (Class K)		Suspected Serious Injuries (Class A)		Suspected Minor Injuries (Class B)		Possible Injuries (Class C)		No Apparent Injuries (Class O)		Total People in Motorcycle-involved Crashes	
	Count	Percent	Count	Percent	Count	Percent	Count	Percent	Count	Percent	Count	Percent
2013	41	19%	170	21%	474	19%	174	19%	282	22%	1,141	20%
2014	43	19%	173	21%	460	19%	192	21%	229	18%	1,097	19%
2015	37	17%	145	18%	504	20%	157	17%	262	20%	1,105	19%
2016	47	21%	158	20%	517	21%	191	21%	265	20%	1,178	21%
2017	53	24%	161	20%	522	21%	196	22%	266	20%	1,198	21%
Total	Count	221	807	2,477	910	1,304	5,719	100%				
	Percent	4%	14%	43%	16%	23%	100%					

**Percent of Injury Severity to People  
in Motorcycle-involved Crashes, 2013 -2017**

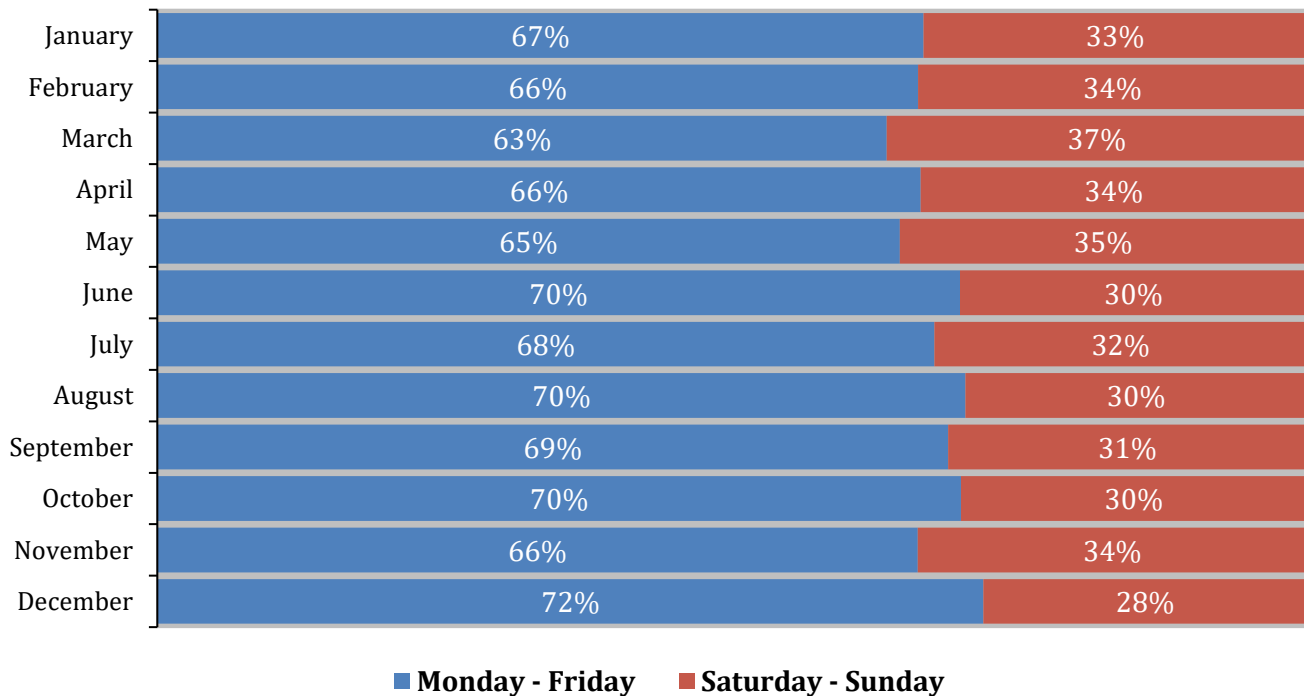




### 3. Motorcycle-involved Crashes by Month and Day, 2013 - 2017

Month	Monday	Tuesday	Wednesday	Thursday	Friday	Saturday	Sunday	Total Motorcycle-involved Crashes		
								Count	Percent	
January	22	28	26	24	30	45	20	195	4%	
February	32	29	49	29	51	61	36	287	5%	
March	58	43	47	66	71	93	71	449	9%	
April	43	52	60	65	53	68	70	411	8%	
May	64	56	79	74	101	115	90	579	11%	
June	83	67	74	87	87	89	83	570	11%	
July	68	87	76	73	80	107	77	568	11%	
August	62	66	91	78	89	94	69	549	10%	
September	87	73	61	91	114	111	82	619	12%	
October	66	58	55	87	78	81	67	492	9%	
November	52	40	43	39	43	62	49	328	6%	
December	23	20	28	25	42	26	28	192	4%	
<b>Total</b>	<b>Count</b>	<b>660</b>	<b>619</b>	<b>689</b>	<b>738</b>	<b>839</b>	<b>952</b>	<b>742</b>	<b>5,239</b>	<b>100%</b>
	<b>Percent</b>	<b>13%</b>	<b>12%</b>	<b>13%</b>	<b>14%</b>	<b>16%</b>	<b>18%</b>	<b>14%</b>	<b>100%</b>	

### Weekday Versus Weekend Motorcycle-involved Crashes, 2013 - 2017

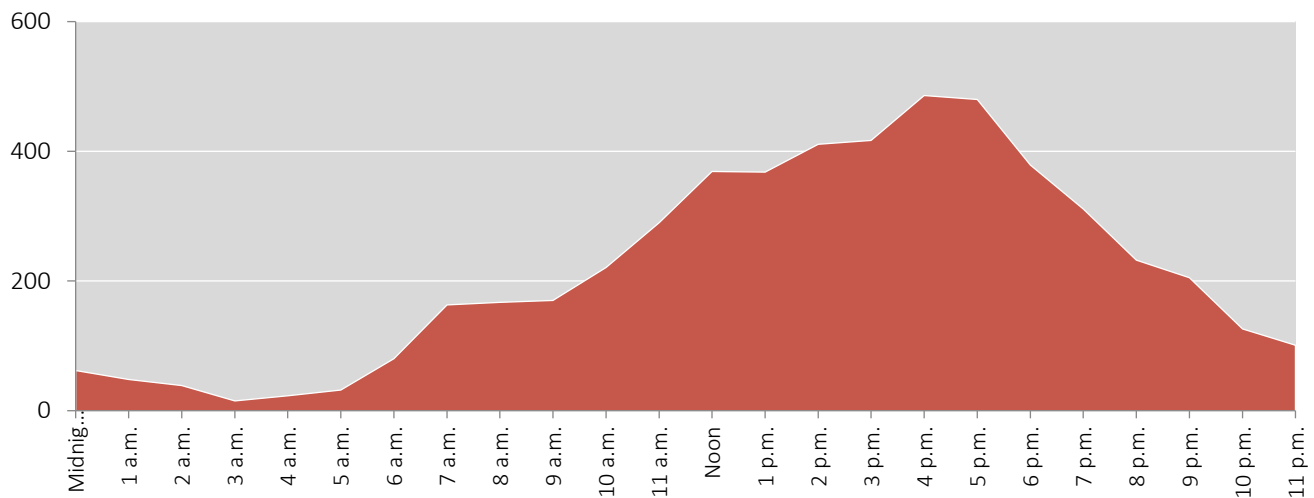




#### 4. Motorcycle-involved Crashes by Hour and Day of Week, 2013 - 2017

Hour	Motorcyclists in Crashes							Total Motorcycle-involved Crashes		
	Monday	Tuesday	Wednesday	Thursday	Friday	Saturday	Sunday	Count	Percent	
Midnight	8	9	3	6	6	10	20	62	1.2%	
1 a.m.	6	5	3	6	5	13	10	48	0.9%	
2 a.m.	1	3	3	5	9	11	7	39	0.7%	
3 a.m.	1	1	1	2	1	5	4	15	0.3%	
4 a.m.	3	2	3	1	4	6	4	23	0.4%	
5 a.m.	12	4	5	6	1	2	2	32	0.6%	
6 a.m.	10	13	17	14	20	4	2	80	1.5%	
7 a.m.	21	26	29	37	30	12	8	163	3.1%	
8 a.m.	32	24	21	29	25	20	16	167	3.2%	
9 a.m.	28	25	21	19	22	33	22	170	3.2%	
10 a.m.	24	30	23	31	28	56	29	221	4.2%	
11 a.m.	40	26	39	37	50	56	42	290	5.5%	
Noon	36	31	53	54	64	76	55	369	7.0%	
1 p.m.	47	47	52	45	52	75	50	368	7.0%	
2 p.m.	53	36	38	54	62	91	77	411	7.8%	
3 p.m.	56	56	64	48	60	76	57	417	8.0%	
4 p.m.	61	59	57	90	62	80	77	486	9.3%	
5 p.m.	67	60	66	68	81	85	53	480	9.2%	
6 p.m.	45	40	55	45	73	63	58	379	7.2%	
7 p.m.	38	47	35	44	51	42	54	311	5.9%	
8 p.m.	23	20	42	36	40	38	33	232	4.4%	
9 p.m.	22	24	27	26	35	42	29	205	3.9%	
10 p.m.	11	19	8	18	33	20	17	126	2.4%	
11 p.m.	9	6	15	10	22	28	11	101	1.9%	
Invalid Code	5	5	5	2	1	4	5	27	0.5%	
Missing Data	1	1	4	5	2	4	0	17	0.3%	
Total	Count	660	619	689	738	839	952	742	5,239	100%
	Percent	13%	12%	13%	14%	16%	18%	14%		100%

Motorcycle-involved Crashes by Hour, 2013 - 2017



### 5. Percentage of Fatal Crashes by Motorcyclists Under the Influence of Alcohol or Drugs, 2013 - 2017

Year	Alcohol-involved			Drug-involved		
	Fatal Crashes by Motorcyclists Under the Influence of Alcohol	Motorcyclists Under the Influence of Alcohol	Percent of Fatal Crashes by Motorcyclists Under the Influence of Alcohol	Fatal Crashes by Motorcyclists Under the Influence of Drugs	Motorcyclists Under the Influence of Drugs	Percent of Fatal Crashes by Motorcyclists Under the Influence of Drugs
2013	18	71	25%	0	4	0%
2014	21	76	28%	6	15	40%
2015	6	64	9%	3	5	60%
2016	13	59	22%	10	15	67%
2017	16	71	23%	13	17	76%
<b>Total</b>	<b>74</b>	<b>341</b>	<b>22%</b>	<b>32</b>	<b>56</b>	<b>57%</b>

### 6. People in Crashes, by Severity of Injuries, with Motorcyclists Under the Influence of Alcohol, 2013 - 2017

Year	Fatalities (Class K)		Suspected Serious Injuries (Class A)		Suspected Minor Injuries (Class B)		Possible Injuries (Class C)		No Apparent Injuries (Class O)		People in Crashes by Severity of Injuries with Motorcyclists Under the Influence of Alcohol	
	Count	Percent	Count	Percent	Count	Percent	Count	Percent	Count	Percent	Count	Percent
2013	18	24%	20	27%	30	18%	3	11%	13	35%	84	22%
2014	21	28%	12	16%	38	23%	8	29%	4	11%	83	22%
2015	6	8%	16	22%	37	22%	7	25%	4	11%	70	18%
2016	13	18%	13	18%	29	17%	4	14%	9	24%	68	18%
2017	16	22%	13	18%	34	20%	6	21%	7	19%	76	20%
<b>Total</b>	<b>Count</b>	<b>74</b>	<b>74</b>	<b>168</b>	<b>28</b>	<b>37</b>	<b>381</b>	<b>100%</b>				
	<b>Percent</b>	<b>19%</b>	<b>19%</b>	<b>44%</b>	<b>7%</b>	<b>10%</b>	<b>100%</b>					

### 7. People in Crashes, by Severity of Injuries, with Motorcyclists Under the Influence of Drugs, 2013 - 2017

Year	Fatalities (Class K)		Suspected Serious Injuries (Class A)		Suspected Minor Injuries (Class B)		Possible Injuries (Class C)		No Apparent Injuries (Class O)		People in Crashes by Severity of Injuries with Motorcyclists Under the Influence of Drugs	
	Count	Percent	Count	Percent	Count	Percent	Count	Percent	Count	Percent	Count	Percent
2013	0	0%	0	0%	3	20%	0	0%	1	50%	4	7%
2014	6	19%	1	17%	8	53%	0	0%	0	0%	15	27%
2015	3	9%	1	17%	1	7%	0	0%	0	0%	5	9%
2016	10	31%	3	50%	2	13%	0	0%	0	0%	15	27%
2017	13	41%	1	17%	1	7%	1	100%	1	50%	17	30%
<b>Total</b>	<b>Count</b>	<b>32</b>	<b>6</b>	<b>15</b>	<b>1</b>	<b>2</b>	<b>56</b>	<b>100%</b>				
	<b>Percent</b>	<b>57%</b>	<b>11%</b>	<b>27%</b>	<b>2%</b>	<b>4%</b>	<b>100%</b>					

## 8. People in Crashes with Motorcyclists Under the Influence of Alcohol or Drugs, by Age, 2013 - 2017

Age Group	People in Crashes with Motorcyclists Under the Influence of Alcohol			People in Crashes with Motorcyclists Under the Influence of Drugs			People in Crashes with Motorcyclists-involved Crashes		
	Fatalities	Total	Percent	Fatalities	Total	Percent	Fatalities	Total	Percent
<15	0	0	0%	0	0	0%	0	41	0%
15-19	0	3	0%	0	2	0%	7	368	2%
20-24	5	38	13%	8	13	62%	24	822	3%
25-29	7	47	15%	4	9	44%	23	668	3%
30-34	6	48	13%	4	8	50%	21	553	4%
35-39	7	51	14%	1	5	20%	18	464	4%
40-44	5	34	15%	0	0	0%	17	445	4%
45-49	9	40	23%	2	2	100%	21	434	5%
50-54	15	52	29%	4	7	57%	23	566	4%
55-59	15	43	35%	3	4	75%	31	455	7%
60-64	4	16	25%	4	4	100%	14	337	4%
65-69	1	2	50%	2	2	100%	14	198	7%
70-74	0	5	0%	0	0	0%	4	92	4%
75 +	0	0	0%	0	0	0%	4	52	8%
Missing Data	0	2	0%	0	0	0%	0	224	0%
<b>Total</b>	<b>74</b>	<b>381</b>	<b>19%</b>	<b>32</b>	<b>56</b>	<b>57%</b>	<b>221</b>	<b>5,719</b>	<b>4%</b>

## 9. People in Crashes with Motorcyclists Under the Influence of Alcohol or Drugs, by Age and Sex, 2013 - 2017

Age Group	People in Crashes with Motorcyclists Under the Influence of Alcohol							People in Crashes with Motorcyclists Under the Influence of Drugs						
	Male			Female			Missing Data	Male			Female			Missing Data
	Killed	Total	%	Killed	Total	%		Killed	Total	%	Killed	Total	%	
<15	0	0	0%	0	0	0%	0	0	0	0%	0	0	0%	0
15-19	0	3	0%	0	0	0%	0	0	2	0%	0	0	0%	0
20-24	5	36	14%	0	2	0%	0	8	13	62%	0	0	0%	0
25-29	7	47	15%	0	0	0%	0	4	9	44%	0	0	0%	0
30-34	6	47	13%	0	1	0%	0	4	8	50%	0	0	0%	0
35-39	7	50	14%	0	1	0%	0	1	5	20%	0	0	0%	0
40-44	5	30	17%	0	4	0%	0	0	0	0%	0	0	0%	0
45-49	9	39	23%	0	0	0%	1	2	2	100%	0	0	0%	0
50-54	14	48	29%	1	4	25%	0	4	7	57%	0	0	0%	0
55-59	15	40	38%	0	3	0%	0	3	4	75%	0	0	0%	0
60-64	4	16	25%	0	0	0%	0	4	4	100%	0	0	0%	0
65-69	1	2	50%	0	0	0%	0	2	2	100%	0	0	0%	0
70-74	0	4	0%	0	1	0%	0	0	0	0%	0	0	0%	0
75 +	0	0	0%	0	0	0%	0	0	0	0%	0	0	0%	0
Missing Data	0	1	0%	0	0	0%	1	0	0	0%	0	0	0%	0
<b>Total</b>	<b>73</b>	<b>363</b>	<b>20%</b>	<b>1</b>	<b>16</b>	<b>6%</b>	<b>2</b>	<b>32</b>	<b>56</b>	<b>57%</b>	<b>0</b>	<b>0</b>	<b>0%</b>	<b>0</b>

### 10. Motorcyclists in Alcohol-involved Crashes, 2013 - 2017

Year	Fatalities			Crashes			Alcohol		
	People Killed in Alcohol-involved Crashes	Total Killed	Percent Alcohol-involved	People in Alcohol-involved Crashes	Total People in Crashes	Percent Alcohol-involved	People Killed in Alcohol-involved Crashes	People in Alcohol-involved Crashes	Percent Killed
2013	20	41	49%	84	1,141	7%	20	84	24%
2014	23	43	53%	91	1,097	8%	23	91	25%
2015	6	37	16%	72	1,105	7%	6	72	8%
2016	14	47	30%	65	1,178	6%	14	65	22%
2017	17	53	32%	78	1,198	7%	17	78	22%
<b>Total</b>	<b>80</b>	<b>221</b>	<b>36%</b>	<b>390</b>	<b>5,719</b>	<b>7%</b>	<b>80</b>	<b>390</b>	<b>21%</b>

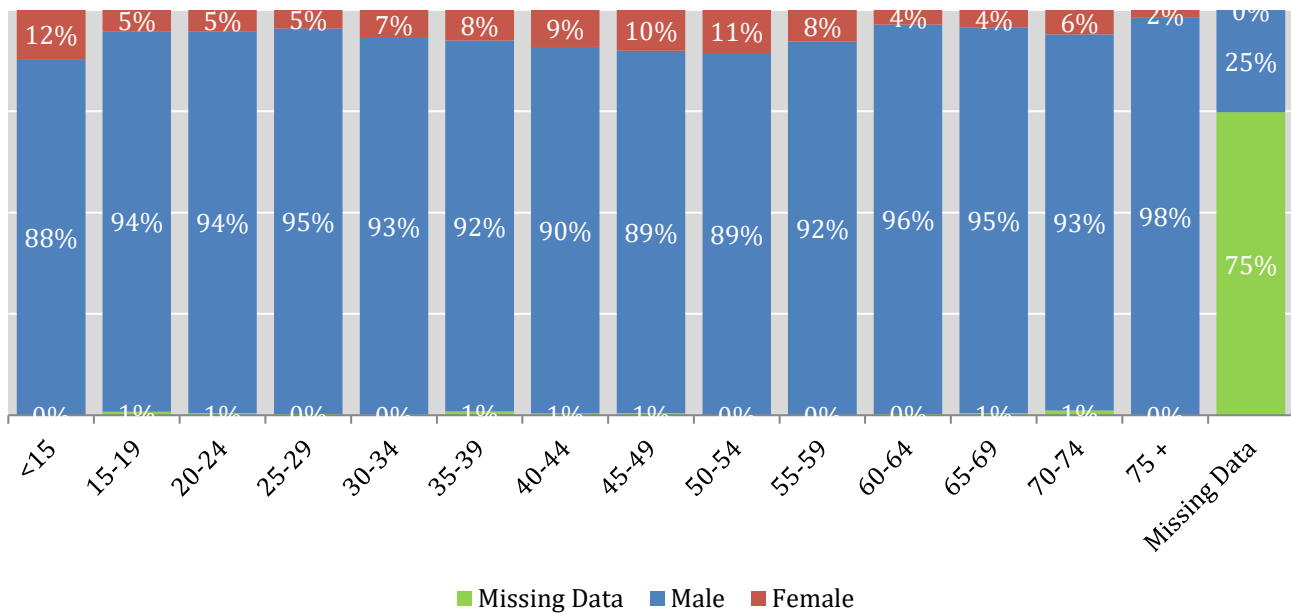
### 11. Motorcyclists in Drug-involved Crashes, 2013 - 2017

Year	Fatalities			Crashes			Drugs		
	People Killed in Drug-involved Crashes	Total Killed	Percent Drug-involved	People in Drug-involved Crashes	Total People in Crashes	Percent Drug-involved	People Killed in Drug-involved Crashes	People in Drug-involved Crashes	Percent Killed
2013	0	41	0%	5	1,141	0%	0	5	0%
2014	8	43	19%	17	1,097	2%	8	17	47%
2015	3	37	8%	6	1,105	1%	3	6	50%
2016	10	47	21%	15	1,178	1%	10	15	67%
2017	13	53	25%	20	1,198	2%	13	20	65%
<b>Total</b>	<b>34</b>	<b>221</b>	<b>15%</b>	<b>63</b>	<b>5,719</b>	<b>1%</b>	<b>34</b>	<b>63</b>	<b>54%</b>

## 12. Motorcycle-involved Crashes by Age Group and Sex, 2013 - 2017

Age Group	Male		Female		Missing Data		Motorcyclists-involved Crashes	
	Count	Percent	Count	Percent	Count	Percent	Count	Percent
<15	29	88%	4	12%	0	0%	33	1%
15-19	323	94%	18	5%	3	1%	344	7%
20-24	734	94%	41	5%	4	1%	779	15%
25-29	603	95%	29	5%	2	0%	634	12%
30-34	474	93%	35	7%	1	0%	510	10%
35-39	378	92%	31	8%	4	1%	413	8%
40-44	357	90%	36	9%	2	1%	395	8%
45-49	347	89%	39	10%	2	1%	388	7%
50-54	455	89%	54	11%	0	0%	509	10%
55-59	368	92%	31	8%	0	0%	399	8%
60-64	292	96%	11	4%	1	0%	304	6%
65-69	173	95%	8	4%	1	1%	182	3%
70-74	77	93%	5	6%	1	1%	83	2%
75 +	51	98%	1	2%	0	0%	52	1%
Missing Data	54	25%	0	0%	160	75%	214	4%
<b>Total</b>	<b>Count</b>	<b>4,715</b>	<b>343</b>	<b>7%</b>	<b>181</b>	<b>3%</b>	<b>5,239</b>	<b>100%</b>
	<b>Percent</b>	<b>90%</b>	<b>7%</b>	<b>3%</b>	<b>100%</b>			

Motorcycle-involved Crashes by Age Group and Sex, 2013 - 2017



### 13. Motorcycle-involved Crashes by Hit-and-Run, 2013 - 2017

Year	Hit-and-Run		Not a Hit-and-Run		Missing Data		Total Motorcyclists-involved Crashes	
	Count	Percent	Count	Percent	Count	Percent	Count	Percent
2013	92	18%	884	19%	57	98%	1,033	20%
2014	76	15%	929	20%	1	2%	1,006	19%
2015	101	20%	905	19%	0	0%	1,006	19%
2016	117	23%	964	21%	0	0%	1,081	21%
2017	120	24%	993	21%	0	0%	1,113	21%
Total	Count	506	4,675		58		5,239	100%
	Percent	10%	89%		1%		100%	

### 14. People in Motorcycle-involved Crashes by Severity of Injury and Light Condition, 2013 - 2017

Light Conditions	Fatalities (Class K)		Suspected Serious Injuries (Class A)		Suspected Minor Injuries (Class B)		Possible Injuries (Class C)		No Apparent Injuries (Class O)		Total People in Motorcyclists-involved Crashes	
	Count	Percent	Count	Percent	Count	Percent	Count	Percent	Count	Percent	Count	Percent
Daylight	144	61%	559	71%	1,804	73%	696	77%	953	72%	4,156	73%
Dark-Lighted	32	14%	101	13%	338	14%	102	11%	179	13%	752	13%
Dark-Not Lighted	39	17%	67	9%	177	7%	54	6%	95	7%	432	8%
Dusk	12	5%	40	5%	80	3%	25	3%	49	4%	206	4%
Dawn	4	2%	6	1%	24	1%	12	1%	10	1%	56	1%
Others	0	0%	1	0%	6	0%	1	0%	3	0%	11	0%
Missing Data	4	2%	11	1%	39	2%	14	2%	38	3%	106	2%
Total	Count	235	785		2,468		904		1,327		5,719	100%
	Percent	4%	14%		43%		16%		23%		100%	

### 15. People in Motorcycle-involved Crashes by Severity of Injury and Road Condition, 2013 – 2017

Road Conditions	Fatalities (Class K)		Suspected Serious Injuries (Class A)		Suspected Minor Injuries (Class B)		Possible Injuries (Class C)		No Apparent Injuries (Class O)		Total People in Motorcyclists-involved Crashes	
	Count	Percent	Count	Percent	Count	Percent	Count	Percent	Count	Percent	Count	Percent
Dry	225	96%	742	95%	2,283	93%	837	93%	1,188	90%	5,275	92%
Wet	6	3%	24	3%	83	3%	29	3%	57	4%	199	3%
Loose Material	0	0%	15	2%	61	2%	22	2%	21	2%	119	2%
Ice	0	0%	0	0%	3	0%	3	0%	10	1%	16	0%
Snow	0	0%	0	0%	0	0%	0	0%	3	0%	3	0%
Others	0	0%	2	0%	17	1%	9	1%	14	1%	42	1%
Missing Data	4	2%	2	0%	21	1%	4	0%	34	3%	65	1%
Total	Count	235	785	2,468	904	1,327	5,719	100%				
	Percent	4%	14%	43%	16%	23%	100%					

### 16. People in Motorcycle-involved Crashes by Severity of Injury and Road Surface, 2013 – 2017

Road Surface	Fatalities (Class K)		Suspected Serious Injuries (Class A)		Suspected Minor Injuries (Class B)		Possible Injuries (Class C)		No Apparent Injuries (Class O)		Total People in Motorcyclists-involved Crashes	
	Count	Percent	Count	Percent	Count	Percent	Count	Percent	Count	Percent	Count	Percent
Paved Center and Edge	182	77%	548	70%	1,632	66%	610	67%	797	60%	3,769	66%
Paved Unstriped	13	6%	77	10%	301	12%	83	9%	194	15%	668	12%
Paved Center Stripe	29	12%	124	16%	441	18%	164	18%	257	19%	1,015	18%
Unpaved	2	1%	28	4%	71	3%	33	4%	28	2%	162	3%
Missing Data	9	4%	8	1%	23	1%	14	2%	51	4%	105	2%
Total	Count	235	785	2,468	904	1,327	5,719	100%				
	Percent	4%	14%	43%	16%	23%	100%					

### 17. People in Motorcycle-involved Crashes by Severity of Injury and Traffic Control Device, 2013 – 2017

Traffic Control Device	Fatalities (Class K)		Suspected Serious Injuries (Class A)		Suspected Minor Injuries (Class B)		Possible Injuries (Class C)		No Apparent Injuries (Class O)		Total People in Motorcyclists-involved Crashes	
	Count	Percent	Count	Percent	Count	Percent	Count	Percent	Count	Percent	Count	Percent
No Controls	132	56%	470	60%	1,488	60%	454	50%	628	47%	3,172	55%
Traffic Signals	34	14%	114	15%	352	14%	202	22%	316	24%	1,018	18%
Stop Sign	11	5%	30	4%	125	5%	44	5%	63	5%	273	5%
No Passing Zone	33	14%	87	11%	204	8%	65	7%	85	6%	474	8%
4-Way Stop	0	0%	2	0%	16	1%	4	0%	9	1%	31	1%
Others	19	8%	69	9%	260	11%	112	12%	155	12%	615	11%
Missing Data	6	3%	13	2%	23	1%	23	3%	71	5%	136	2%
Total	Count	235	785	2,468	904	1,327	5,719	100%				
	Percent	4%	14%	43%	16%	23%	100%					



### 18. People in Motorcycle-involved Crashes by Severity of Injury and Road Design Lanes, 2013 – 2017

Road Design Lanes	Fatalities (Class K)		Suspected Serious Injuries (Class A)		Suspected Minor Injuries (Class B)		Possible Injuries (Class C)		No Apparent Injuries (Class O)		Total People in Motorcyclists-involved Crashes	
	Count	Percent	Count	Percent	Count	Percent	Count	Percent	Count	Percent	Count	Percent
Two Lanes	105	45%	302	38%	1,047	42%	358	40%	556	42%	2,368	41%
One Lane	72	31%	237	30%	725	29%	246	27%	324	24%	1,604	28%
Three Lanes	32	14%	121	15%	325	13%	153	17%	173	13%	804	14%
Four+ Lanes	18	8%	94	12%	267	11%	103	11%	162	12%	644	11%
Missing Data	8	3%	31	4%	104	4%	44	5%	112	8%	299	5%
Total	Count	235	785	2,468	904	1,327	5,719	100%				
	Percent	4%	14%	43%	16%	23%	100%					

### 19. People in Motorcycle-involved Crashes by Severity of Injury and Road Design Dividers, 2013 – 2017

Road Design Dividers	Fatalities (Class K)		Suspected Serious Injuries (Class A)		Suspected Minor Injuries (Class B)		Possible Injuries (Class C)		No Apparent Injuries (Class O)		Total People in Motorcyclists-involved Crashes	
	Count	Percent	Count	Percent	Count	Percent	Count	Percent	Count	Percent	Count	Percent
Painted Divider	72	31%	244	31%	795	32%	277	31%	339	26%	1,727	30%
Physical Divider	59	25%	225	29%	616	25%	264	29%	308	23%	1,472	26%
Undivided	18	8%	81	10%	299	12%	93	10%	132	10%	623	11%
Missing Data	86	37%	235	30%	758	31%	270	30%	548	41%	1,897	33%
Total	Count	235	785	2,468	904	1,327	5,719	100%				
	Percent	4%	14%	43%	16%	23%	100%					

### 20. Motorcyclists in Crashes by Severity of Injury and Road Design, 2013 – 2017

Road Design	Fatalities (Class K)		Suspected Serious Injuries (Class A)		Suspected Minor Injuries (Class B)		Possible Injuries (Class C)		No Apparent Injuries (Class O)		Total People in Motorcyclists-involved Crashes	
	Count	Percent	Count	Percent	Count	Percent	Count	Percent	Count	Percent	Count	Percent
Freeway (Full Access)	82	35%	240	31%	761	31%	238	26%	351	26%	1,672	29%
One-Way	12	5%	55	7%	156	6%	59	7%	93	7%	375	7%
Construction Zone	2	1%	11	1%	28	1%	12	1%	21	2%	74	1%
Ramp	2	1%	11	1%	39	2%	18	2%	10	1%	80	1%
Alley	1	0%	1	0%	5	0%	1	0%	0	0%	8	0%
Others	88	37%	314	40%	917	37%	398	44%	475	36%	2,192	38%
Missing Data	48	20%	153	19%	562	23%	178	20%	377	28%	1,318	23%
Total	Count	235	785	2,468	904	1,327	5,719	100%				
	Percent	4%	14%	43%	16%	23%	100%					

## 21. People in Motorcycle-involved Crashes by Severity of Injury and Driver Action, 2013 – 2017

Vehicle Actions	Fatalities (Class K)		Suspected Serious Injuries (Class A)		Suspected Minor Injuries (Class B)		Possible Injuries (Class C)		No Apparent Injuries (Class O)		Total People in Motorcyclists-involved Crashes	
	Count	Percent	Count	Percent	Count	Percent	Count	Percent	Count	Percent	Count	Percent
GoingStraight	204	87%	650	83%	1,922	78%	650	72%	840	63%	4,266	75%
LeftTurn	2	1%	42	5%	198	8%	68	8%	79	6%	389	7%
RightTurn	4	2%	20	3%	93	4%	59	7%	60	5%	236	4%
OvertakingPassing	5	2%	15	2%	43	2%	6	1%	30	2%	99	2%
StartInTrafficLane	0	0%	2	0%	2	0%	3	0%	5	0%	12	0%
Others	6	3%	24	3%	83	3%	86	10%	198	15%	397	7%
Missing Data	14	6%	32	4%	127	5%	32	4%	115	9%	320	6%
Total	Count	235	785	2,468	904	1,327	5,719	100%				
	Percent	4%	14%	43%	16%	23%	100%					

## 22. People in Motorcycle -involved Crashes by Severity of Injury and Agency, 2013 – 2017

Law Enforcement Agency	Fatalities (Class K)		Suspected Serious Injuries (Class A)		Suspected Minor Injuries (Class B)		Possible Injuries (Class C)		No Apparent Injuries (Class O)		Total People in Motorcyclists-involved Crashes	
	Count	Percent	Count	Percent	Count	Percent	Count	Percent	Count	Percent	Count	Percent
Albuquerque Police Department	58	25%	288	37%	798	32%	340	38%	330	25%	1,814	32%
New Mexico State Police (NmSP)	81	34%	111	14%	299	12%	68	8%	137	10%	696	12%
Las Cruces Police Department	8	3%	41	5%	171	7%	57	6%	109	8%	386	7%
Bernalillo County Sheriffs Department	14	6%	50	6%	147	6%	44	5%	71	5%	326	6%
Santa Fe Police Department	7	3%	20	3%	86	3%	52	6%	45	3%	210	4%
Others	67	29%	275	35%	967	39%	343	38%	635	48%	2,287	40%
Total	Count	235	785	2,468	904	1,327	5,719	100%				
	Percent	4%	14%	43%	16%	23%	100%					

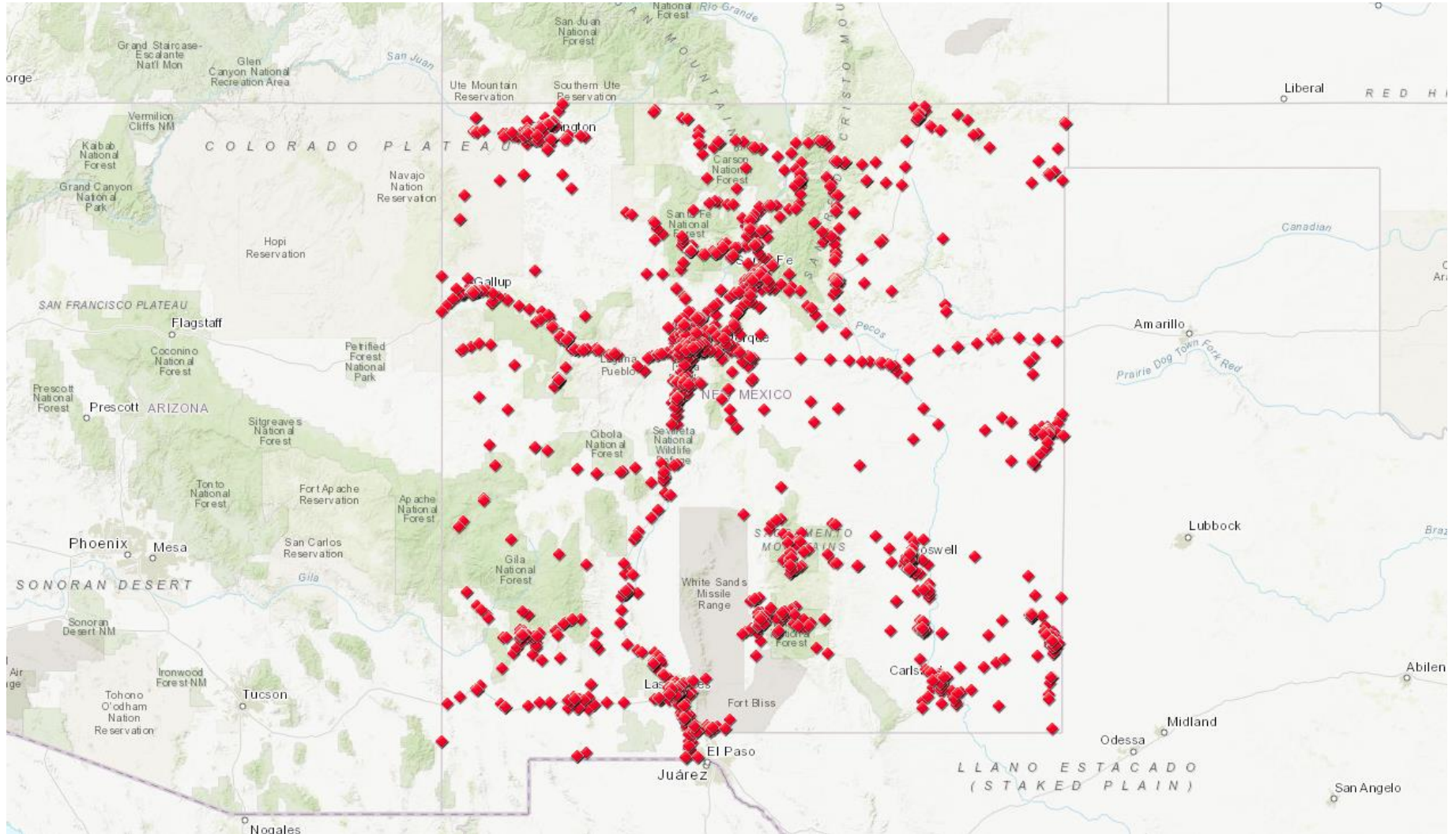
### 23. People in Motorcycle -involved Crashes by Severity of Injury and City, 2013 – 2017

Cities	Fatalities (Class K)		Suspected Serious Injuries (Class A)		Suspected Minor Injuries (Class B)		Possible Injuries (Class C)		No Apparent Injuries (Class O)		Total People in Motorcyclists-involved Crashes	
	Count	Percent	Count	Percent	Count	Percent	Count	Percent	Count	Percent	Count	Percent
Albuquerque	65	28%	321	41%	919	37%	389	43%	492	37%	2,186	38.2%
Las Cruces	12	5%	55	7%	209	8%	73	8%	129	10%	478	8.4%
Santa Fe	7	3%	23	3%	109	4%	54	6%	55	4%	248	4.3%
Rio Rancho	2	1%	25	3%	76	3%	23	3%	31	2%	157	2.7%
Farmington	3	1%	27	3%	63	3%	19	2%	38	3%	150	2.6%
Alamogordo	4	2%	9	1%	70	3%	21	2%	43	3%	147	2.6%
Roswell	5	2%	12	2%	38	2%	19	2%	35	3%	109	1.9%
Carlsbad	1	0%	14	2%	36	1%	15	2%	38	3%	104	1.8%
Clovis	4	2%	10	1%	33	1%	22	2%	25	2%	94	1.6%
Hobbs	4	2%	6	1%	38	2%	13	1%	18	1%	79	1.4%
Gallup	2	1%	7	1%	24	1%	4	0%	22	2%	59	1.0%
Ruidoso	1	0%	2	0%	21	1%	15	2%	14	1%	53	0.9%
Silver City	0	0%	4	1%	23	1%	6	1%	15	1%	48	0.8%
Los Lunas	0	0%	7	1%	21	1%	10	1%	8	1%	46	0.8%
Las Vegas	0	0%	1	0%	27	1%	4	0%	9	1%	41	0.7%
Española	0	0%	4	1%	14	1%	6	1%	11	1%	35	0.6%
Artesia	2	1%	4	1%	14	1%	5	1%	7	1%	32	0.6%
Taos	1	0%	3	0%	13	1%	8	1%	6	0%	31	0.5%
Bernalillo	2	1%	0	0%	12	0%	4	0%	12	1%	30	0.5%
Deming	2	1%	0	0%	15	1%	2	0%	10	1%	29	0.5%
Aztec	2	1%	4	1%	17	1%	2	0%	4	0%	29	0.5%
Grants	1	0%	4	1%	9	0%	4	0%	11	1%	29	0.5%
Belen	2	1%	1	0%	13	1%	1	0%	7	1%	24	0.4%
Raton	0	0%	5	1%	5	0%	0	0%	11	1%	21	0.4%
Truth or Consequences	1	0%	3	0%	10	0%	3	0%	3	0%	20	0.3%
Los Alamos	0	0%	4	1%	8	0%	2	0%	3	0%	17	0.3%
Socorro	1	0%	2	0%	10	0%	0	0%	3	0%	16	0.3%
La Mesa	0	0%	2	0%	5	0%	4	0%	4	0%	15	0.3%
Cloudcroft	0	0%	1	0%	7	0%	1	0%	5	0%	14	0.2%
Lovington	1	0%	1	0%	8	0%	2	0%	2	0%	14	0.2%
Missing Data	71	30%	117	15%	317	13%	88	10%	139	10%	732	12.8%
All Other Cities	39	17%	107	14%	284	12%	85	9%	117	9%	632	11.1%
Total	235		785		2,468		904		1,327		5,719	
	4%		14%		43%		16%		23%		100%	

## 24. People in Motorcycle -involved Crashes by Severity of Injury and County, 2013 – 2017

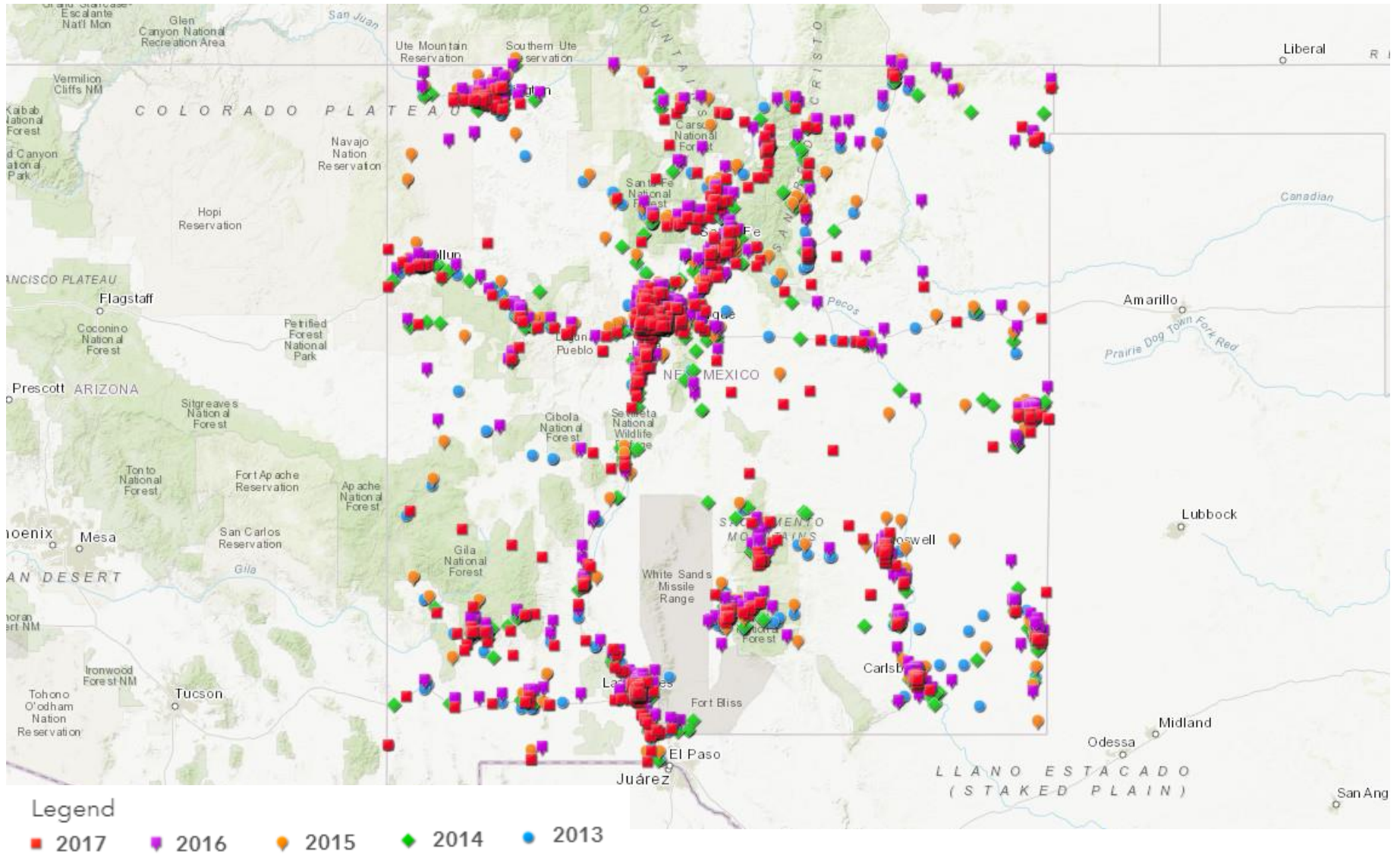
County	Fatalities (Class K)	Suspected Serious Injuries (Class A)	Suspected Minor Injuries (Class B)	Possible Injuries (Class C)	No Apparent Injuries (Class O)	Total People in Motorcyclists- involved Crashes		
						Count	Percent	
Bernalillo	72	338	962	403	519	2,294	40%	
Catron	1	2	7	1	4	15	0%	
Chaves	9	19	51	20	42	141	2%	
Cibola	3	10	34	12	24	83	1%	
Colfax	9	11	30	4	18	72	1%	
Curry	6	11	37	25	28	107	2%	
De Baca	0	0	2	1	0	3	0%	
Doña Ana	22	74	270	89	158	613	11%	
Eddy	6	26	55	22	58	167	3%	
Grant	1	12	60	14	29	116	2%	
Guadalupe	5	0	7	3	4	19	0%	
Harding	0	0	1	0	0	1	0%	
Hidalgo	2	2	3	0	2	9	0%	
Lea	7	11	58	16	27	119	2%	
Left Blank	0	0	0	0	1	1	0%	
Lincoln	7	11	39	16	19	92	2%	
Los Alamos	0	5	16	6	3	30	1%	
Luna	3	2	25	7	16	53	1%	
McKinley	2	13	40	12	25	92	2%	
Mora	3	3	13	4	1	24	0%	
Otero	6	24	113	38	60	241	4%	
Quay	2	4	4	1	3	14	0%	
Rio Arriba	4	22	40	5	19	90	2%	
Roosevelt	0	3	7	3	4	17	0%	
San Juan	11	49	101	29	50	240	4%	
San Miguel	2	4	38	7	11	62	1%	
Sandoval	9	43	135	34	50	271	5%	
Santa Fe	18	39	173	85	78	393	7%	
Sierra	5	3	22	3	7	40	1%	
Socorro	4	6	19	5	9	43	1%	
Taos	6	8	22	9	14	59	1%	
Torrance	3	5	8	8	7	31	1%	
Union	0	7	6	2	6	21	0%	
Valencia	7	18	70	20	31	146	3%	
Total	Count	235	785	2,468	904	1,327	5,719	100%
	Percent	11%	17%	32%	29%	10%	100%	

Map 1: Motorcycle-involved Crashes, 2013 - 2017

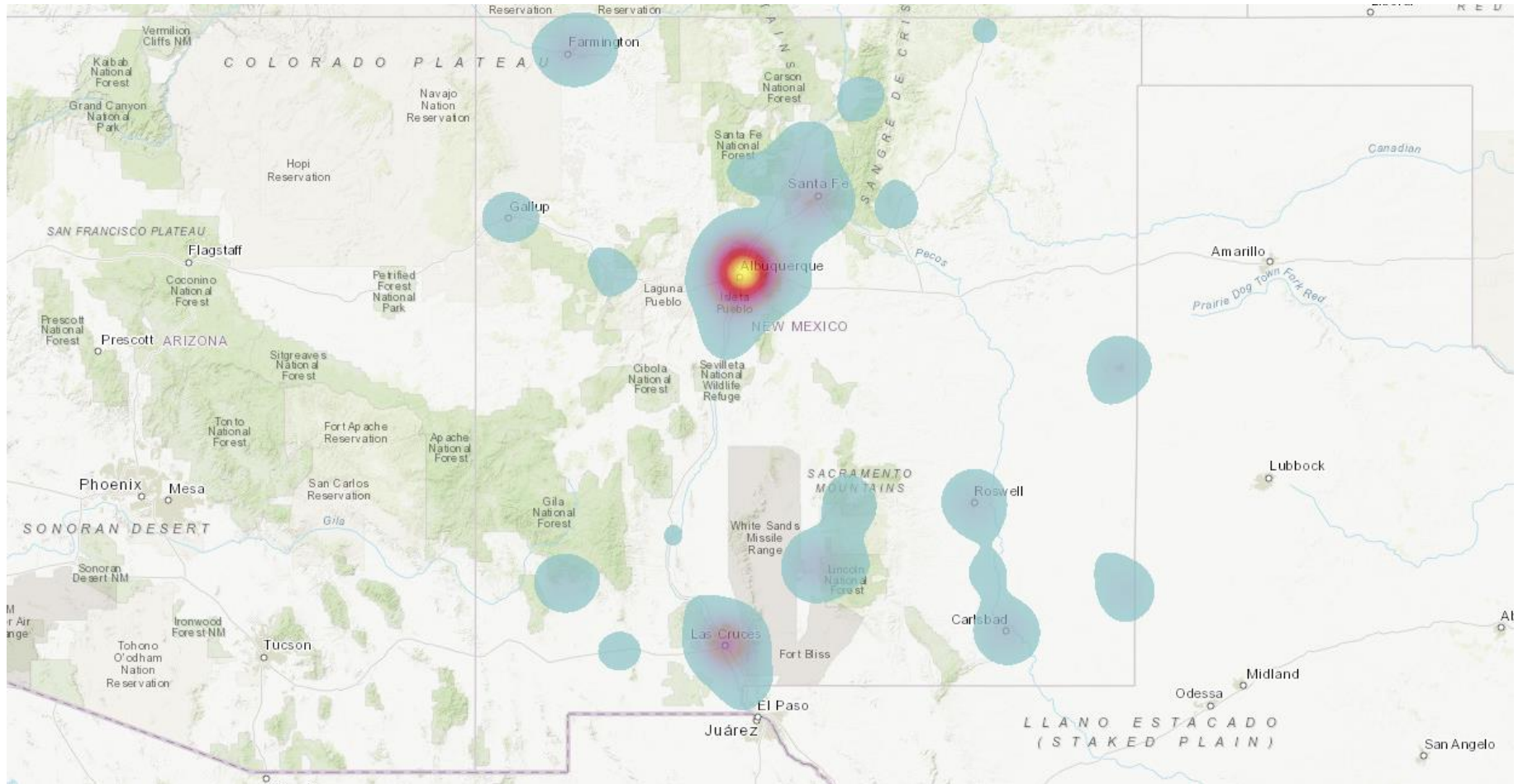




**Map 2: Motorcycle -involved Crashes by Year, 2013 – 2017**

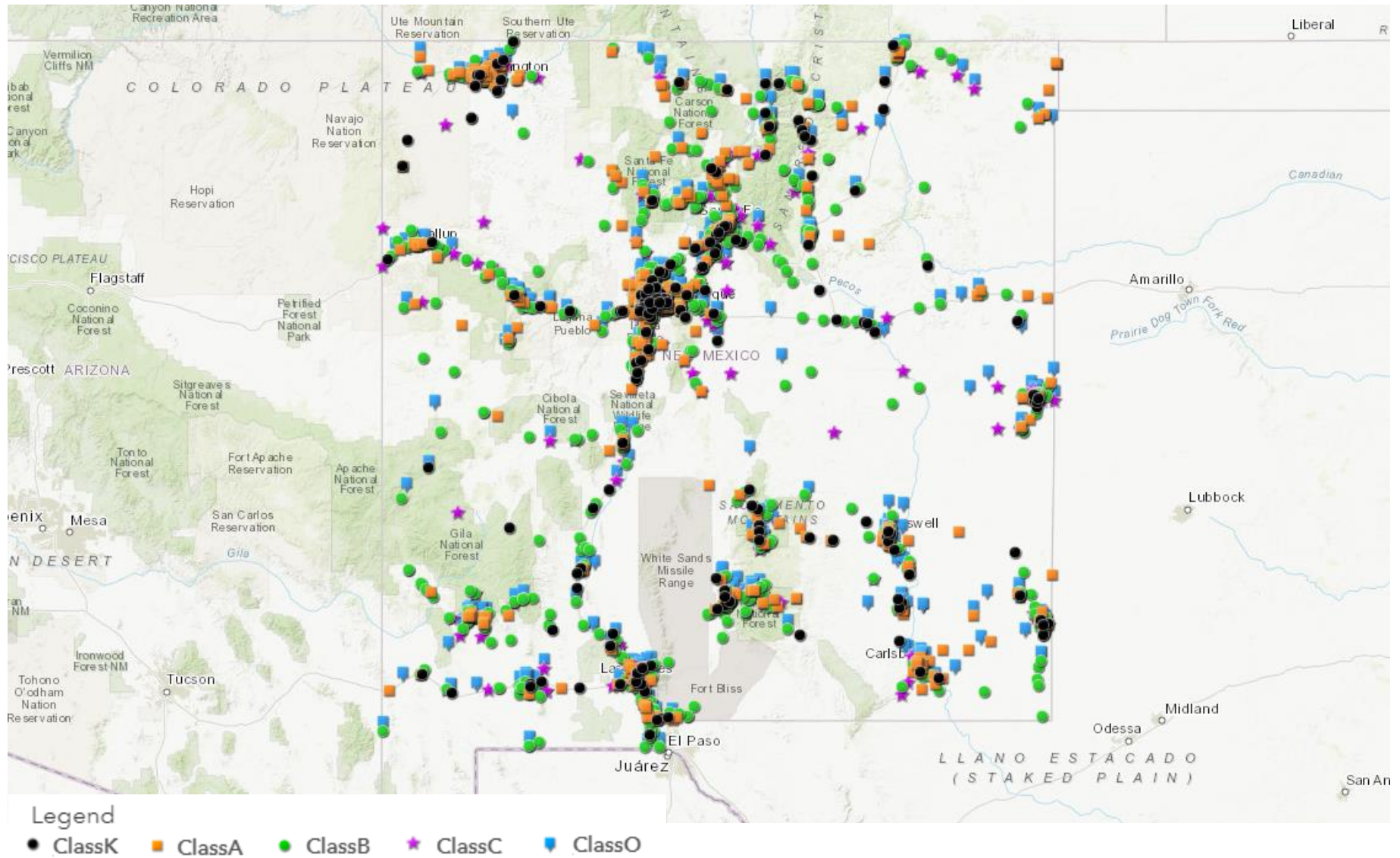


**Map 3: Motorcycle-involved Crashes Density Map, 2013 – 2017**

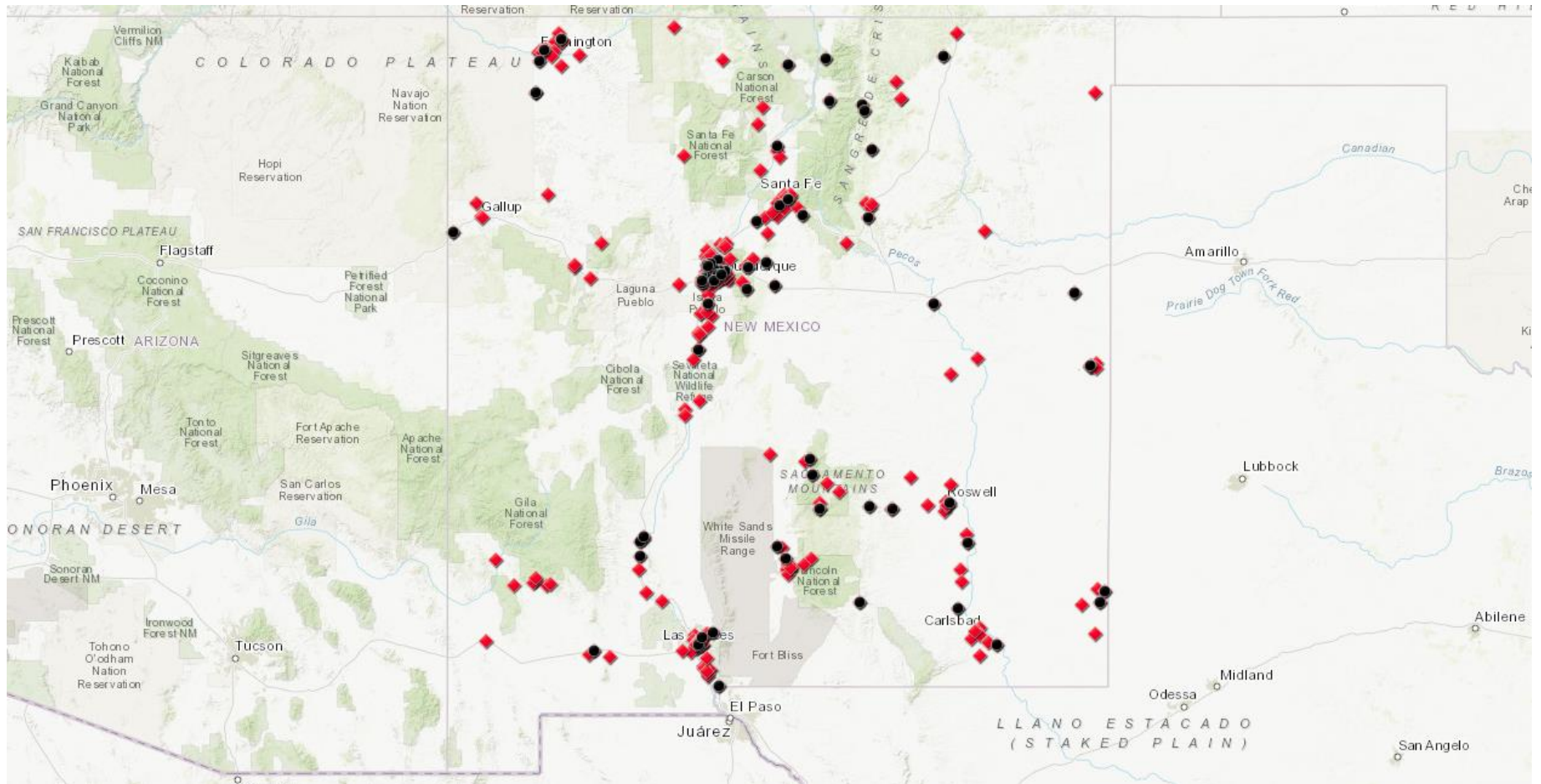




**Map 4: Motorcycle -involved Crashes by Severity of Injuries, 2013 - 2017**



**Map 5: Fatal Crashes by Motorcyclists Under the Influence of Alcohol, 2013 - 2017**



**Legend**  
 ● Alcohol Involved-Fatality    ◆ Alcohol Involved



**Map 6: Location with Highest Number of Motorcycle-involved Crashes, 2013 – 2017: Albuquerque**

