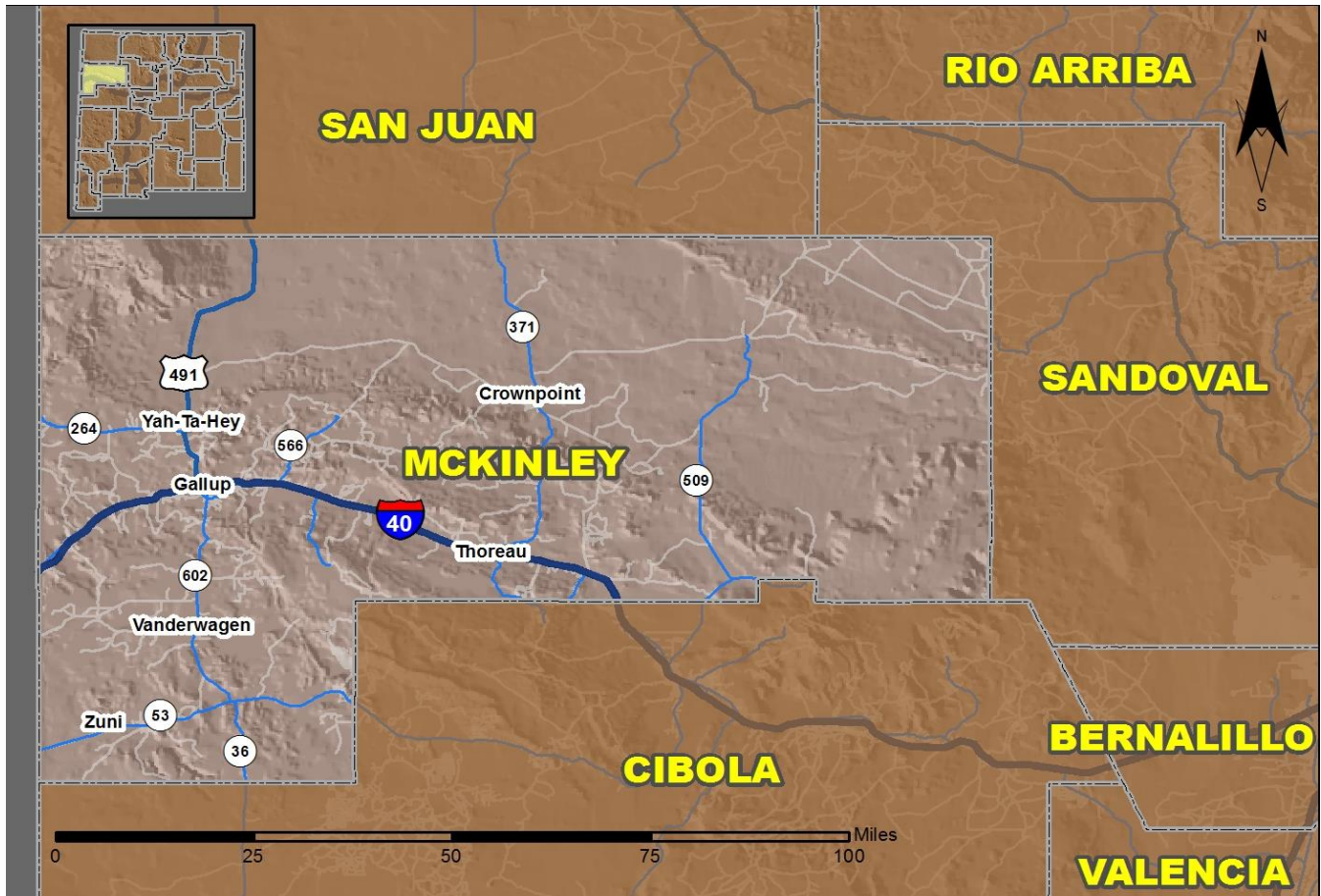


# 2016 Community Report

## Gallup



Produced for the New Mexico Department of Transportation,  
Traffic Safety Division, Traffic Records Bureau,  
Under Contract 5801 by the University of New Mexico,  
Geospatial and Population Studies, Traffic Research Unit

Distributed in compliance with New Mexico Statute 66-7-214  
as a reference source regarding New Mexico traffic crashes

For the purposes of this report, data are compiled by the University of New Mexico, Geospatial and Population Studies, Traffic Research Unit (TRU), on behalf of the New Mexico Department of Transportation (NMDOT). Data in this report may differ from that in other data sources, such as the Federal Fatality Analysis Reporting System (FARS), due to the timing of publications and rules for how data are compiled and maintained in Federal vs. State databases. If you have questions regarding this report, please contact the Traffic Safety Division at 505-827-0427.

<http://tru.unm.edu/Crash-Reports/Community-Reports/>

## Definitions

---

**Aggravated DWI** – A driver arrested for 1) driving with a BAC of 0.16 or higher, 2) driving under the influence of alcohol or drugs and causing bodily injury to a human being as a result, or 3) driving under the influence of alcohol or drugs and refusing to submit to a BAC test at the time of arrest for DWI.

**Alcohol-involved Crash** – A crash for which the Uniform Crash Report indicated that 1) a DWI citation was issued, 2) alcohol was a contributing factor, or 3) a person in control of a vehicle (including a pedestrian or pedalcyclist) was suspected of being under the influence of alcohol.

**Alcohol-involved Driver** – A person in control of a vehicle who was cited for DWI or indicated on the Uniform Crash Report as being either suspected or determined by testing to be under the influence of alcohol. There can be multiple alcohol-involved drivers in a single alcohol-involved crash.

**Crash** – A reported incident on a public roadway involving one or more motor vehicles that resulted in death, personal injury, or at least \$500 in property damage. Crashes on private property (such as a parking lot) are not included.

**DWI Arrest (Citation)** – In this report, a DWI arrest (a.k.a. a DWI citation) is a driver arrested for either DWI or aggravated DWI. New Mexico’s legal limit for presumption of driving while intoxicated (DWI) is 0.08 for non-commercial drivers older than 21 years of age, 0.04 for commercial vehicle drivers, and 0.02 for drivers younger than 21 years of age.

**DWI Conviction** – A driver convicted of driving under the intoxicating influence of alcohol, narcotics, or pathogenic drugs, including aggravated DWI.

**Fatal Crash** – A crash in which at least one person was killed. More than one person can be killed in a single fatal crash.

**Fatalities** – The number of people killed in a crash. The terms “killed” and “deaths” are synonymous with “fatalities.” A fatality is crash-related if it occurs at the time of the crash or if the person(s) involved in the crash dies within 30 days.

**Injury Crash** – A reported crash in which at least one person was injured. Injury crashes involve at least one suspected serious injury (Class A), suspected minor injury (Class B), or possible injury (Class C). Fatal crashes are not included.

**Missing Data** – An indication that the applicable field on the UCR form was left blank or contained an invalid code. Starting with crashes that occurred in 2012, improvements in the identification of missing data in the NMDOT crash database led to an increase in the reported amount of missing data.

**Pedalcyclist** – A person riding a mechanism of transport that is powered solely by pedals (a.k.a. bicyclist).

**Pedestrian** – A person on foot, walking, running, jogging, hiking, sitting or lying down who is involved in a motor vehicle traffic crash.

## Sources

---

**Crash Data** – New Mexico Department of Transportation, Traffic Safety Division, Traffic Records Bureau, Traffic Crash Database, as of the report date below. Crash data are compiled using NMDOT Uniform Crash Reports (UCR), submitted by law enforcement agencies in the state, for any incident on a public roadway involving one or more motor vehicles that resulted in death, injury, or at least \$500 in property damage. These reports are processed by the NMDOT Traffic Records Bureau and analyzed by the University of New Mexico, Geospatial and Population Studies, Traffic Research Unit (TRU).

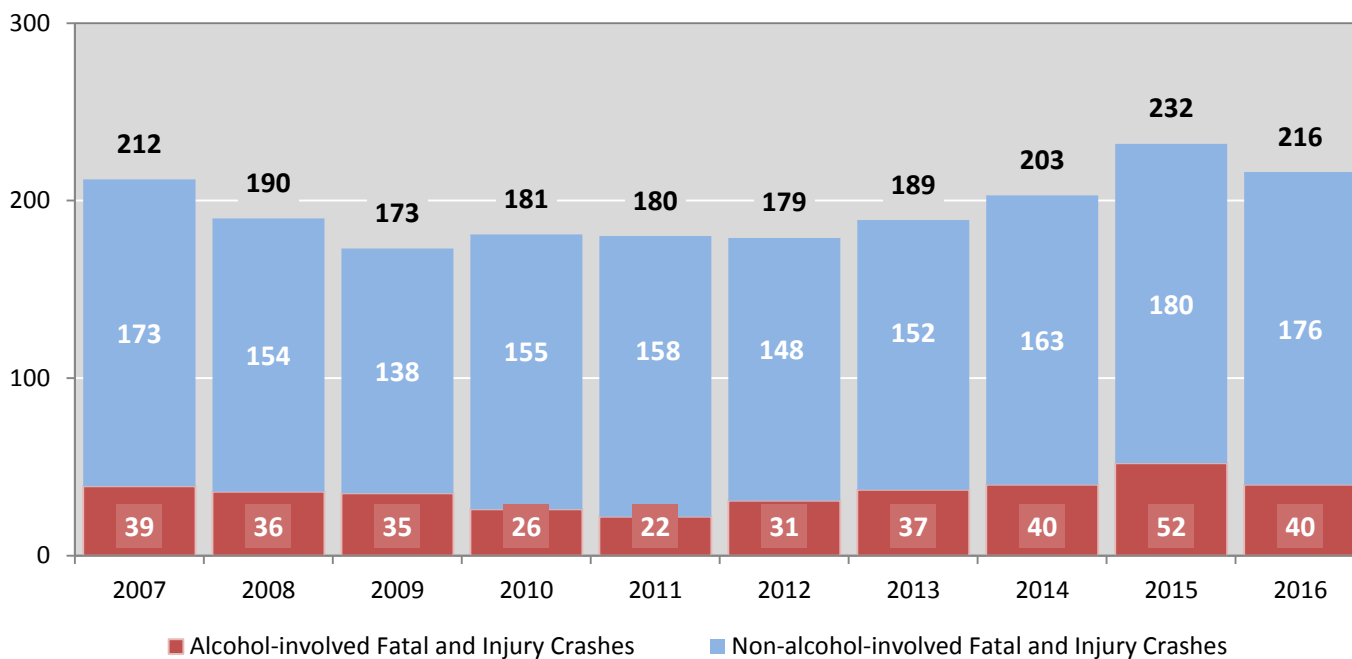
**DWI Citation Tracking System (CTS)** – New Mexico Taxation and Revenue Department (NM TRD), Motor Vehicle Division (MVD), DWI Citation Tracking System (CTS), as of December 2017. Repeat offenders are identified by the combination of account key, arrest date, and citation number. County data are based upon the county where the arrest took place. City data are based upon the city where the offender resides.

**Urban Areas** – New Mexico Department of Transportation, Asset Management and Planning, 2010 U.S. Census Urbanized Area Boundaries, NMDOT-Adjusted, and U.S. Census Urban Clusters, August 21, 2013. In crashes before 2013, “urban” was defined as a town or city with a population of at least 2,500 people.

**Table 1: Total Crashes and Alcohol-involved Crashes by Crash Severity in Gallup, 2007-2016**

Year	Total Crashes				Alcohol-involved Crashes			
	Fatal	Injury	Property Damage Only	Total	Fatal	Injury	Property Damage Only	Total
2007	8	204	524	<b>736</b>	6	33	31	<b>70</b>
2008	5	185	568	<b>758</b>	4	32	47	<b>83</b>
2009	6	167	587	<b>760</b>	5	30	51	<b>86</b>
2010	2	179	579	<b>760</b>	1	25	29	<b>55</b>
2011	3	177	557	<b>737</b>	0	22	37	<b>59</b>
2012	4	175	559	<b>738</b>	2	29	37	<b>68</b>
2013	7	182	606	<b>795</b>	4	33	51	<b>88</b>
2014	14	189	588	<b>791</b>	12	28	47	<b>87</b>
2015	3	229	662	<b>894</b>	1	51	52	<b>104</b>
2016	5	211	611	<b>827</b>	4	36	48	<b>88</b>

**Figure 1: Alcohol-involved Fatal and Injury Crashes Compared with Non-alcohol-involved Fatal and Injury Crashes in Gallup, 2007-2016**



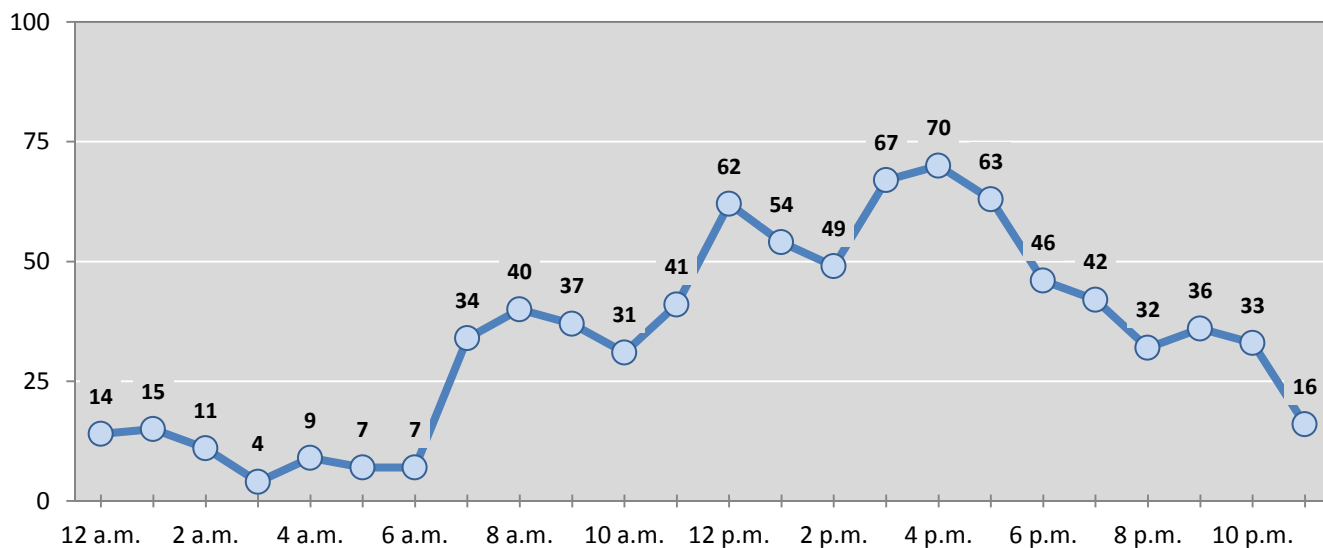
**Table 2: Crashes by Month in Gallup, 2012-2016**

Month	Crashes					5-Year Average
	2012	2013	2014	2015	2016	
January	62	82	69	71	78	<b>72</b>
February	66	69	73	79	99	<b>77</b>
March	34	58	60	56	65	<b>55</b>
April	51	62	59	62	54	<b>58</b>
May	57	26	65	66	61	<b>55</b>
June	56	55	67	77	69	<b>65</b>
July	59	58	55	73	47	<b>58</b>
August	53	73	71	76	68	<b>68</b>
September	68	64	61	57	79	<b>66</b>
October	71	76	79	79	66	<b>74</b>
November	71	79	56	89	70	<b>73</b>
December	90	93	76	109	71	<b>88</b>
<b>Total Crashes</b>	<b>738</b>	<b>795</b>	<b>791</b>	<b>894</b>	<b>827</b>	<b>809</b>

**Table 3: Alcohol-involved Crashes by Month in Gallup, 2012-2016**

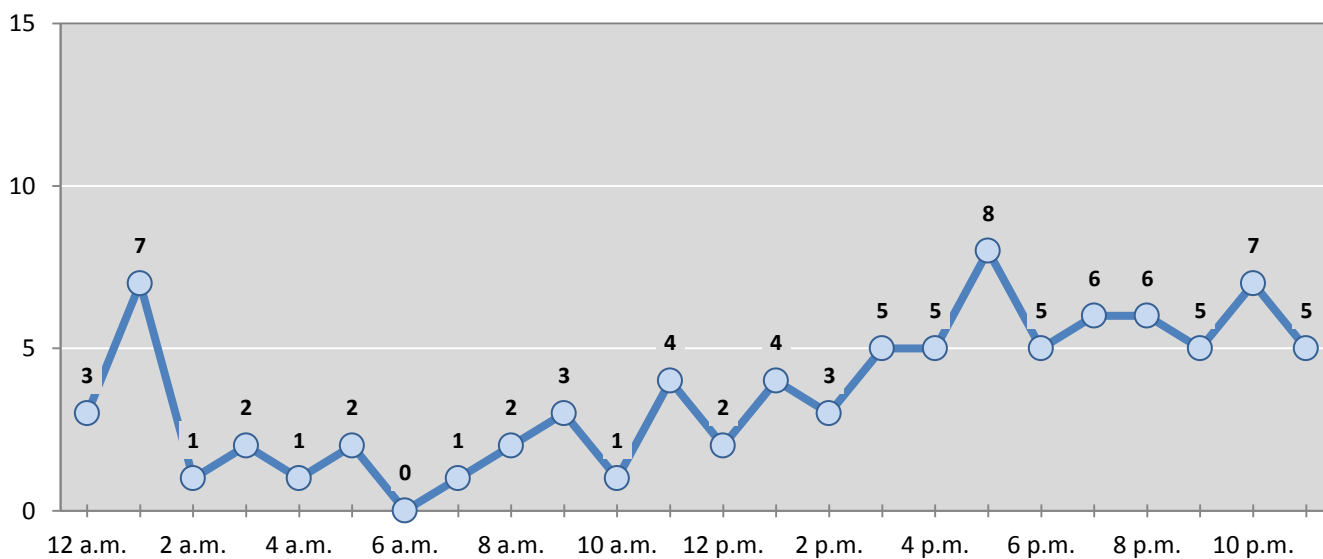
Month	Alcohol-involved Crashes					5-Year Average
	2012	2013	2014	2015	2016	
January	6	10	8	9	8	<b>8</b>
February	3	3	7	6	13	<b>6</b>
March	2	6	8	8	6	<b>6</b>
April	6	5	9	6	4	<b>6</b>
May	6	1	6	7	10	<b>6</b>
June	2	7	5	8	5	<b>5</b>
July	6	7	5	14	4	<b>7</b>
August	4	10	8	4	7	<b>7</b>
September	9	7	7	11	6	<b>8</b>
October	8	12	10	12	10	<b>10</b>
November	8	7	7	3	8	<b>7</b>
December	8	13	7	16	7	<b>10</b>
<b>Total Crashes</b>	<b>68</b>	<b>88</b>	<b>87</b>	<b>104</b>	<b>88</b>	<b>87</b>

**Figure 2: Crashes by Hour in Gallup, 2016**



\* In 2016, Gallup had 7 crashes for which hour data were missing.

**Figure 3: Alcohol-involved Crashes by Hour in Gallup, 2016**



\* In 2016, Gallup had 0 alcohol-involved crashes for which hour data were missing.

**Table 4: Alcohol-involved Crashes by Day of Week in Gallup, 2012-2016**

Day of Week	Alcohol-involved Crashes					5-Year Average
	2012	2013	2014	2015	2016	
Sunday	6	10	10	8	9	9
Monday	9	7	7	11	13	9
Tuesday	5	18	16	20	8	13
Wednesday	8	13	10	13	6	10
Thursday	11	7	11	14	14	11
Friday	9	21	13	19	18	16
Saturday	20	12	20	19	20	18
<b>Total Crashes</b>	<b>68</b>	<b>88</b>	<b>87</b>	<b>104</b>	<b>88</b>	<b>87</b>

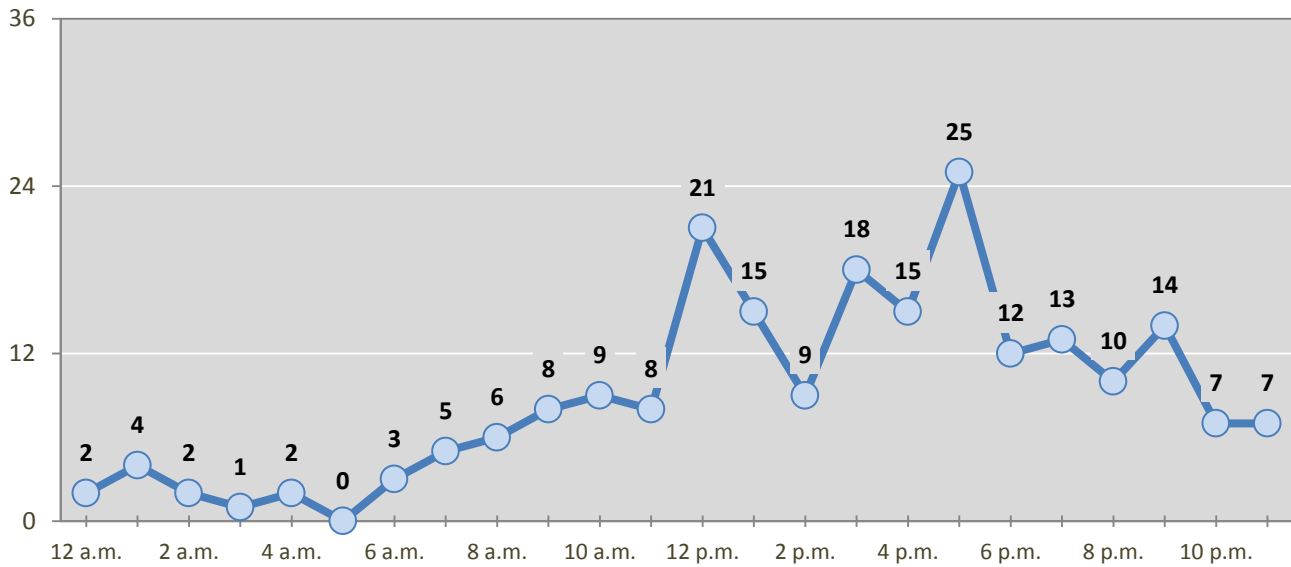
**Table 5: Fatal and Injury Crashes by Day of Week in Gallup, 2012-2016**

Day of Week	Fatal and Injury Crashes					5-Year Average
	2012	2013	2014	2015	2016	
Sunday	16	13	22	16	18	17
Monday	26	23	28	36	36	30
Tuesday	22	26	31	45	30	31
Wednesday	23	40	31	31	30	31
Thursday	21	23	21	29	31	25
Friday	38	33	32	47	33	37
Saturday	33	31	38	28	38	34
<b>Total Crashes</b>	<b>179</b>	<b>189</b>	<b>203</b>	<b>232</b>	<b>216</b>	<b>204</b>

**Table 6: Pedestrian and Pedalcyclist Crashes by Day of Week in Gallup, 2012-2016**

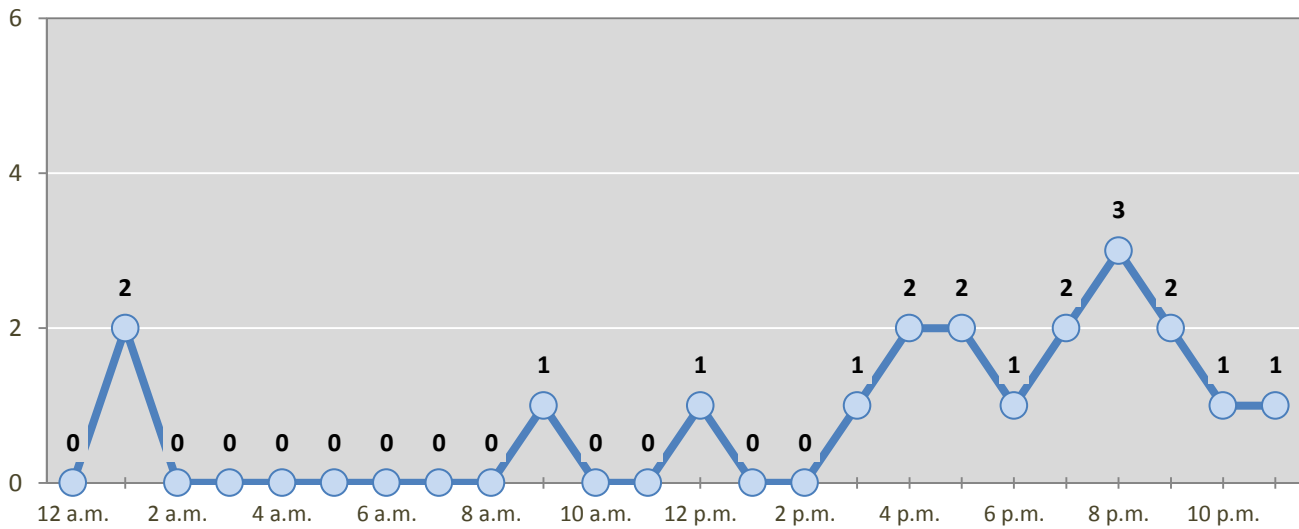
Day of Week	Pedestrian and Pedalcyclist Crashes					5-Year Average
	2012	2013	2014	2015	2016	
Sunday	3	0	5	3	0	2
Monday	4	3	7	6	3	5
Tuesday	3	7	7	6	1	5
Wednesday	3	3	2	2	5	3
Thursday	5	3	3	4	4	4
Friday	2	8	3	5	2	4
Saturday	6	3	8	4	4	5
<b>Total Crashes</b>	<b>26</b>	<b>27</b>	<b>35</b>	<b>30</b>	<b>19</b>	<b>27</b>

**Figure 4: Fatal and Injury Crashes by Hour in Gallup, 2016**



\* In 2016, Gallup had 0 crashes for which hour data were missing.

**Figure 5: Pedestrian and Pedalcyclist Crashes by Hour in Gallup, 2016**



\* In 2016, Gallup had 0 crashes for which hour data were missing.

**Table 7: Severity of Injuries to People in Crashes by Rural and Urban Location in Gallup, 2016**

Urban and Rural Locations by Alcohol-involvement	People in Crashes by Severity of Injuries					Total People
	Fatalities (Class K)	Suspected Serious Injuries (Class A)	Suspected Minor Injuries (Class B)	Possible Injuries (Class C)	No Apparent Injuries (Class O)	
<b>People in Alcohol-involved Crashes</b>	<b>4</b>	<b>6</b>	<b>18</b>	<b>35</b>	<b>182</b>	<b>245</b>
Urban	4	6	18	35	178	241
Rural Non-Interstate	0	0	0	0	4	4
Rural Interstate	0	0	0	0	0	0
<b>People in Crashes</b>	<b>5</b>	<b>12</b>	<b>62</b>	<b>254</b>	<b>2,123</b>	<b>2,456</b>
Urban	5	12	62	252	2,096	2,427
Rural Non-Interstate	0	0	0	2	27	29
Rural Interstate	0	0	0	0	0	0
<b>Percent in Alcohol-involved Crashes</b>	<b>80%</b>	<b>50%</b>	<b>29%</b>	<b>14%</b>	<b>9%</b>	<b>10%</b>

**Table 8: Total Crashes by Roadway System and Crash Severity in Gallup, 2012-2016**

Crash Severity by System	Crashes by Year					5-Year Average
	2012	2013	2014	2015	2016	
<b>Total Rural Interstate</b>	<b>1</b>	<b>22</b>	<b>21</b>	<b>0</b>	<b>0</b>	<b>9</b>
Fatal Crash	1	1	2	0	0	1
Injury Crash	0	5	5	0	0	2
Property Damage Only Crash	0	16	14	0	0	6
<b>Total Rural Non-Interstate</b>	<b>1</b>	<b>15</b>	<b>16</b>	<b>5</b>	<b>8</b>	<b>9</b>
Fatal Crash	0	1	0	0	0	0
Injury Crash	0	5	6	0	2	3
Property Damage Only Crash	1	9	10	5	6	6
<b>Total Urban</b>	<b>736</b>	<b>758</b>	<b>754</b>	<b>889</b>	<b>819</b>	<b>792</b>
Fatal Crash	3	5	12	3	5	6
Injury Crash	175	172	178	229	209	193
Property Damage Only Crash	558	581	564	657	605	593



**Table 9: Total Crashes by Crash Classification in Gallup, 2012-2016**

Crash Classification	Total Crashes by Year					5-Year Average
	2012	2013	2014	2015	2016	
Animal	5	7	6	8	12	8
Fixed Object	67	82	55	90	73	73
Other (Non-Collision)	19	17	14	5	16	14
Other (Object)	16	22	20	11	13	16
Other Vehicle	509	519	551	654	620	571
Overturn/Rollover	15	21	26	13	12	17
Parked Vehicle	54	77	62	52	51	59
Pedalcyclist	4	4	7	4	2	4
Pedestrian	23	23	29	25	17	23
Railroad Train	1	0	1	1	0	1
Rollover	0	0	0	13	1	3
Vehicle on Other Road	5	7	6	4	9	6
Missing Data	20	16	14	14	1	13
<b>Total Crashes</b>	<b>738</b>	<b>795</b>	<b>791</b>	<b>894</b>	<b>827</b>	<b>809</b>

**Table 10: Vehicles in Crashes by Vehicle Type in Gallup, 2012-2016**

Vehicle Type <sup>1</sup>	Vehicles in Crashes by Vehicle Type					5-Year Average
	2012	2013	2014	2015	2016	
Bus	4	0	7	4	0	3
Motorcycle	16	14	11	11	7	12
Passenger	577	590	545	682	679	615
Pedalcyclist	5	4	7	4	2	4
Pedestrian	23	24	29	26	18	24
Pickup	378	394	391	418	369	390
Semi	57	41	57	56	44	51
Van/SUV/4WD	194	256	265	316	330	272
Other Vehicle	9	24	7	18	6	13
Missing Data	129	138	188	164	111	146
<b>Total Vehicles</b>	<b>1,392</b>	<b>1,485</b>	<b>1,507</b>	<b>1,699</b>	<b>1,566</b>	<b>1,530</b>

<sup>1</sup> Pedestrians and pedalcyclists are counted as non-motorized vehicles, when involved in a crash with a motor vehicle. See Page 17 for data on drivers of non-motorized vehicles in crashes (i.e. pedestrians and pedalcyclists).

**Table 11: Motor Vehicle Drivers in Crashes by Vehicle Type and Age Group in Gallup, 2016**

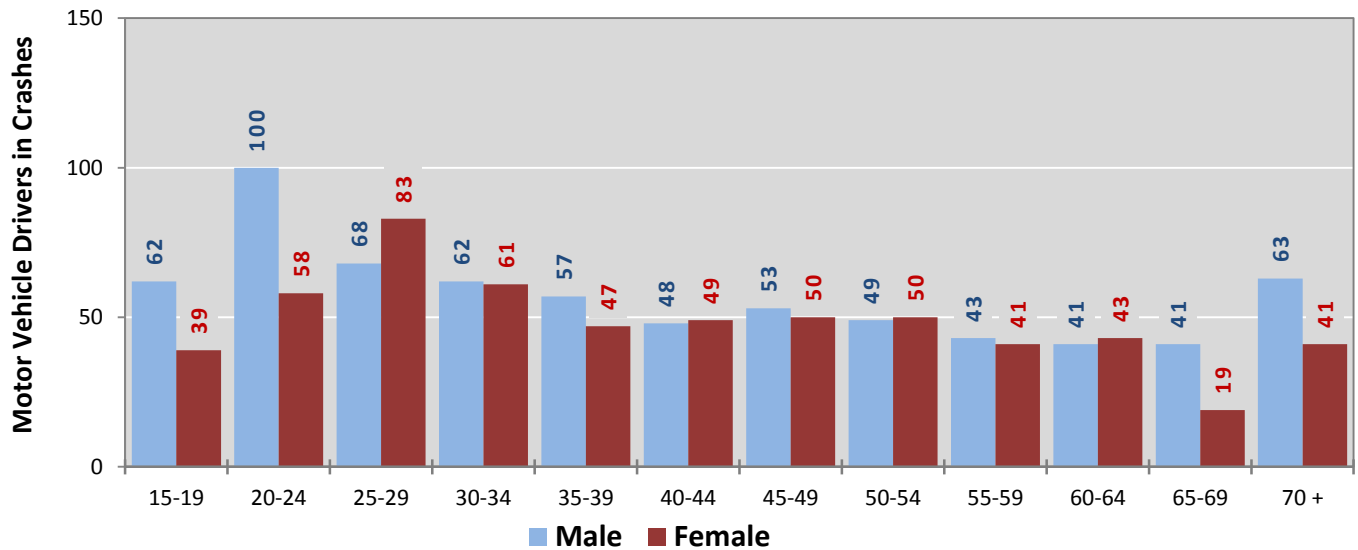
Age Groups	Motor Vehicle <sup>1</sup> Drivers by Vehicle Type and Age Group								Total Drivers
	Bus	Motor-cycle	Passenger	Pickup	Semi	Van 4WD SUV	Other Vehicle	Missing Data	
15-19	0	1	64	14	0	19	1	2	101
20-24	0	0	99	28	5	23	0	3	158
25-29	0	1	83	29	1	35	0	2	151
30-34	0	0	59	33	3	25	1	2	123
35-39	0	1	45	19	4	34	1	0	104
40-44	0	0	39	22	6	28	0	2	97
45-49	0	1	38	34	4	25	0	1	103
50-54	0	0	38	34	4	22	0	1	99
55-59	0	3	29	25	8	18	0	1	84
60-64	0	0	32	28	5	18	0	1	84
65-69	0	0	21	23	0	15	1	0	60
70 +	0	0	39	36	0	25	1	3	104
Missing Data	0	0	93	44	4	43	1	93	278
<b>Total Drivers</b>	<b>0</b>	<b>7</b>	<b>679</b>	<b>369</b>	<b>44</b>	<b>330</b>	<b>6</b>	<b>111</b>	<b>1,546</b>

**Table 12: Alcohol-involved Motor Vehicle Drivers in Crashes by Vehicle Type and Age Group in Gallup, 2016**

Age Groups	Alcohol-involved Motor Vehicle <sup>1</sup> Drivers by Vehicle Type and Age Group								Total Drivers
	Bus	Motor-cycle	Passenger	Pickup	Semi	Van 4WD SUV	Other Vehicle	Missing Data	
15-19	0	0	3	2	0	0	0	0	5
20-24	0	0	10	4	0	2	0	1	17
25-29	0	0	11	3	0	4	0	1	19
30-34	0	0	6	0	0	0	0	0	6
35-39	0	0	1	1	0	2	0	0	4
40-44	0	0	5	1	0	2	0	0	8
45-49	0	0	1	2	0	1	0	0	4
50-54	0	0	1	1	0	0	0	0	2
55-59	0	0	1	0	0	0	0	0	1
60-64	0	0	1	1	0	0	0	0	2
65-69	0	0	1	2	0	0	0	0	3
70 +	0	0	0	0	0	0	0	0	0
Missing Data	0	0	5	2	0	0	0	1	8
<b>Total Drivers</b>	<b>0</b>	<b>0</b>	<b>46</b>	<b>19</b>	<b>0</b>	<b>11</b>	<b>0</b>	<b>3</b>	<b>79</b>

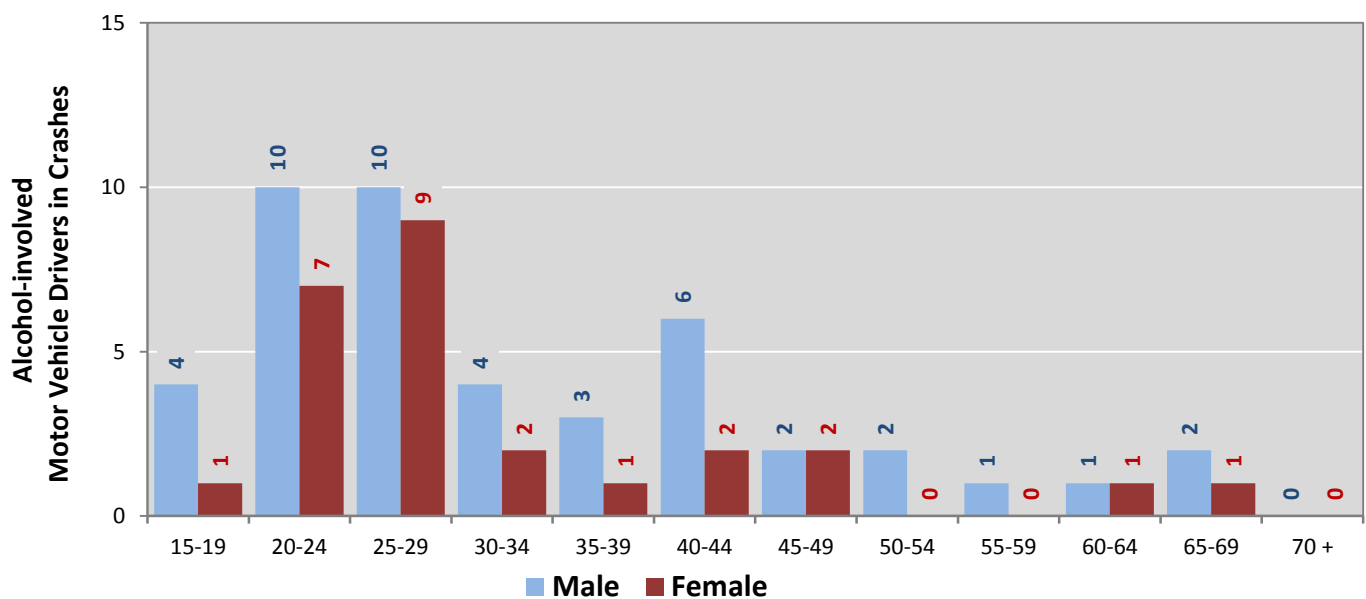
<sup>1</sup> See Page 17 for data on drivers of non-motorized vehicles in crashes (i.e. pedestrians and pedalcyclists).

**Figure 6: Motor Vehicle Drivers in Crashes by Age Group and Sex in Gallup, 2016**



\* In 2016, Gallup had 278 drivers in crashes for which age or sex data were missing.

**Figure 7: Alcohol-involved Motor Vehicle Drivers in Crashes by Age Group and Sex in Gallup, 2016**



\* In 2016, Gallup had 8 drivers in crashes for which age or sex data were missing.

**Table 13: Alcohol-involved Motor Vehicle Drivers Under 21 (Ages 15-20) in Crashes in Gallup, 2012-2016**

Age <sup>1</sup>	Year					5-Year Total
	2012	2013	2014	2015	2016	
15	0	0	0	0	0	0
16	0	0	1	0	0	1
17	0	1	0	0	0	1
18	1	1	3	0	2	7
19	1	2	0	1	3	7
20	0	3	2	3	3	11
<b>Total Drivers</b>	<b>2</b>	<b>7</b>	<b>6</b>	<b>4</b>	<b>8</b>	<b>27</b>

**Table 14: Motor Vehicle Drivers Under 21 (Ages 15-20) in Crashes by Age, Sex and Alcohol-involvement in Gallup, 2016**

Age <sup>1</sup>	Total Drivers				Alcohol-involved Drivers			
	Sex		Total Drivers	Percent of Total	Sex		Total Drivers	Percent of Total
	Male	Female			Male	Female		
15	3	1	4	3%	0	0	0	0%
16	7	4	11	7%	0	0	0	0%
17	20	4	24	16%	0	0	0	0%
18	19	17	36	24%	2	0	2	25%
19	13	13	26	18%	2	1	3	38%
20	29	18	47	32%	1	2	3	38%
<b>Total Drivers</b>	<b>91</b>	<b>57</b>	<b>148</b>	<b>100%</b>	<b>5</b>	<b>3</b>	<b>8</b>	<b>100%</b>

<sup>1</sup> For analysis of drivers under age 21, when the driver age or sex are not identified on the crash report (typically hit-and-run drivers), the driver data are considered unreliable and are excluded from the analysis.

**Table 15: Frequency of Contributing Factors in Crashes  
by Crash Severity in Gallup, 2016**

Contributing Factors	Frequency of Contributing Factor <sup>1</sup> by Crash Severity			
	Frequency in Fatal Crashes	Frequency in Injury Crashes	Frequency in Property Damage Only Crashes	Frequency in All Crashes
<b>Human</b>	<b>8</b>	<b>377</b>	<b>951</b>	<b>1,336</b>
Driver Inattention	2	107	313	<b>422</b>
Failed to Yield Right of Way	0	45	92	<b>137</b>
Following Too Closely	0	29	89	<b>118</b>
Made Improper Turn	0	27	63	<b>90</b>
Alcohol Involved	4	37	49	<b>90</b>
Avoid No Contact - Vehicle	0	13	73	<b>86</b>
Other Improper Driving	0	20	56	<b>76</b>
Excessive Speed	0	28	43	<b>71</b>
Speed Too Fast for Conditions	0	13	33	<b>46</b>
Disregarded Traffic Signal	0	18	20	<b>38</b>
Improper Lane Change	0	4	24	<b>28</b>
Improper Backing	0	0	27	<b>27</b>
Improper Overtaking	0	3	24	<b>27</b>
Drove Left Of Center	0	8	14	<b>22</b>
Avoid No Contact - Other	0	4	12	<b>16</b>
Passed Stop Sign	0	3	8	<b>11</b>
Pedestrian Error	1	10	0	<b>11</b>
Drug Involved	1	3	2	<b>6</b>
Vehicle Skidded Before Brake	0	0	4	<b>4</b>
Cell Phone	0	1	2	<b>3</b>
Failed to Yield to Police Vehicle	0	2	1	<b>3</b>
Failed to Yield to Emergency Vehicle	0	2	0	<b>2</b>
Driverless Moving Vehicle	0	0	1	<b>1</b>
Texting	0	0	1	<b>1</b>
High Speed Pursuit	0	0	0	<b>0</b>
<b>Vehicle</b>	<b>0</b>	<b>8</b>	<b>21</b>	<b>29</b>
Other Mechanical Defect	0	6	12	<b>18</b>
Inadequate Brakes	0	1	5	<b>6</b>
Defective Tires	0	1	3	<b>4</b>
Defective Steering	0	0	1	<b>1</b>
<b>Environment</b>	<b>0</b>	<b>0</b>	<b>6</b>	<b>6</b>
Road Defect	0	0	5	<b>5</b>
Traffic Control Not Functioning	0	0	1	<b>1</b>
Low Visibility Due to Smoke	0	0	0	<b>0</b>
<b>Other</b>	<b>3</b>	<b>182</b>	<b>517</b>	<b>702</b>
None	2	128	421	<b>551</b>
Other - No Driver Error	1	54	96	<b>151</b>

<sup>1</sup> Multiple contributing factors may be reported for any vehicle in a crash.

**Table 16: People in Crashes by Crash Classification and Severity of Injuries in Gallup, 2016**

Crash Classification	People in Crashes by Severity of Injuries					Total People
	Fatalities (Class K)	Suspected Serious Injuries (Class A)	Suspected Minor Injuries (Class B)	Possible Injuries (Class C)	No Apparent Injuries (Class O)	
Animal	0	0	0	0	20	20
Fixed Object	0	4	4	15	88	111
Other (Non-Collision)	0	0	1	0	28	29
Other (Object)	0	0	2	1	26	29
Other Vehicle	1	6	45	230	1,769	2,051
Overturn/Rollover	0	0	2	3	12	17
Parked Vehicle	0	0	2	1	118	121
Pedalcyclist	0	0	1	0	3	4
Pedestrian	4	2	5	4	27	42
Railroad Train	0	0	0	0	0	0
Rollover	0	0	0	0	1	1
Vehicle on Other Road	0	0	0	0	29	29
Missing Data	0	0	0	0	2	2
<b>Total People</b>	<b>5</b>	<b>12</b>	<b>62</b>	<b>254</b>	<b>2,123</b>	<b>2,456</b>

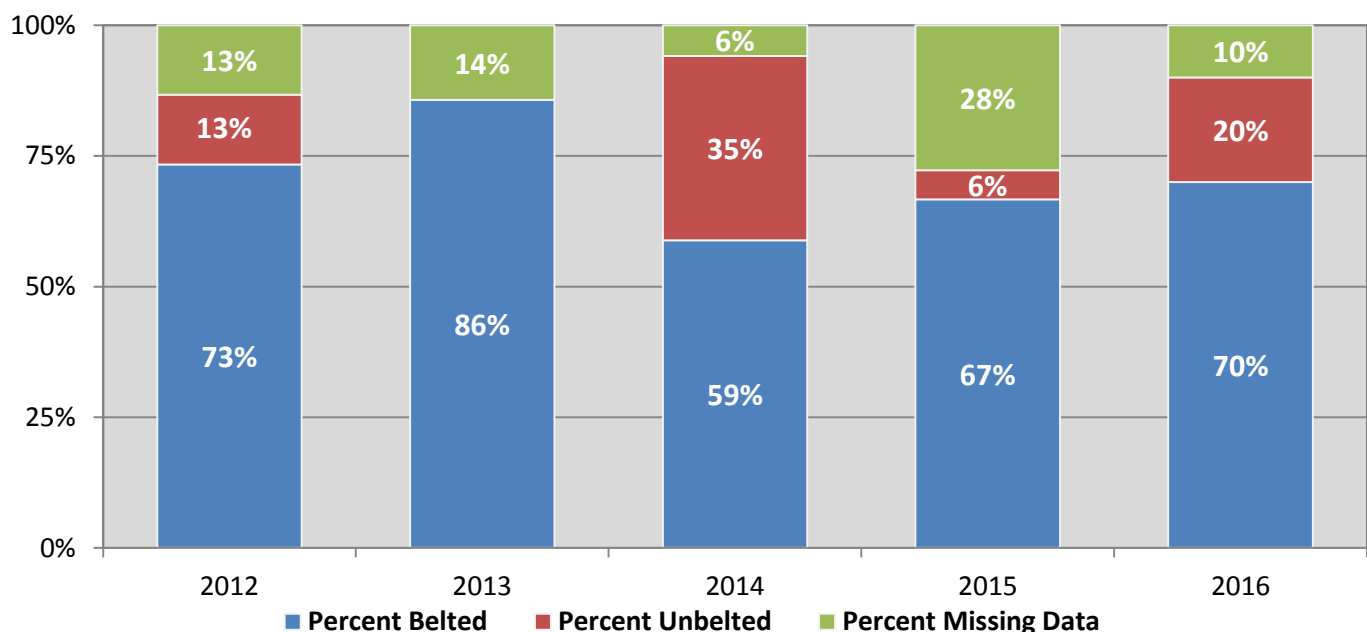
**Table 17: Killed or Injured Unbelted People in Crashes by Sex and Age Group in Gallup, 2016**

Age Groups	Unbelted People Killed or Injured <sup>1,2</sup>				Total People
	Male	Percent of Male	Female	Percent of Female	
0-4	0	0%	1	9%	1
5-9	0	0%	1	9%	1
10-14	0	0%	0	0%	0
15-19	1	11%	3	27%	4
20-24	0	0%	1	9%	1
25-29	1	11%	2	18%	3
30-34	1	11%	0	0%	1
35-39	1	11%	0	0%	1
40-44	1	11%	0	0%	1
45-49	1	11%	0	0%	1
50-54	1	11%	1	9%	2
55-59	1	11%	0	0%	1
60-64	0	0%	1	9%	1
65-69	1	11%	0	0%	1
70 +	0	0%	0	0%	0
Missing Data	0	0%	1	9%	1
<b>Total People</b>	<b>9</b>	<b>100%</b>	<b>11</b>	<b>100%</b>	<b>20</b>

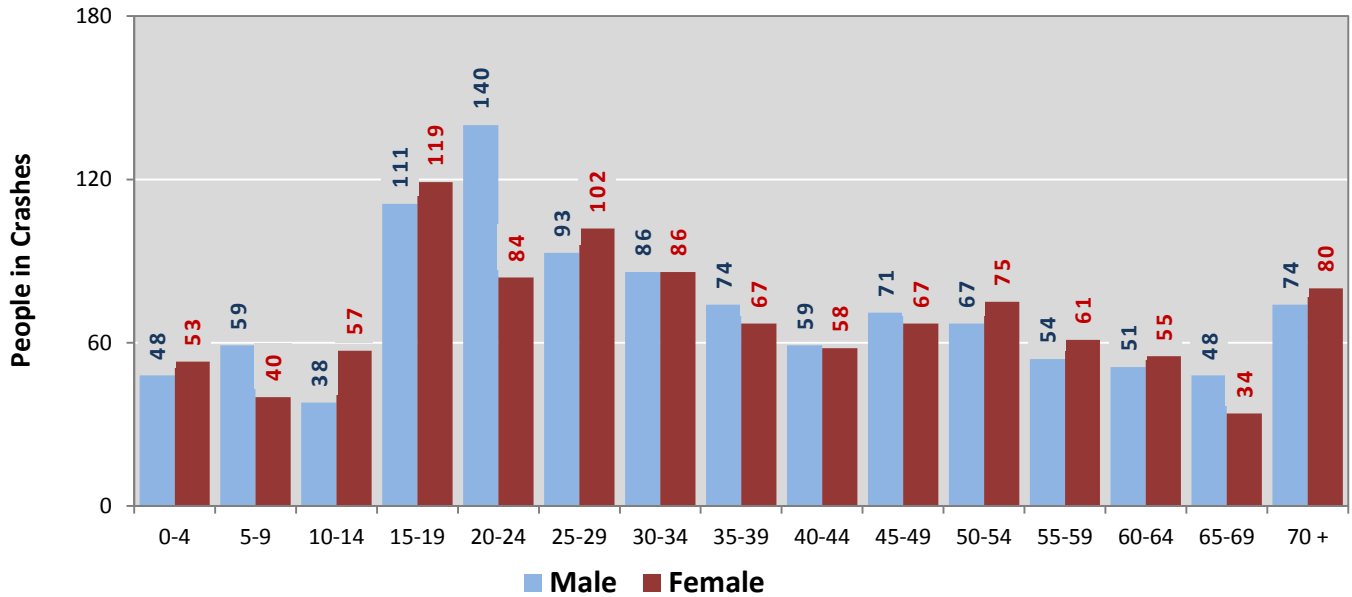
<sup>1</sup> People injured are in one of three categories: suspected serious injury, suspected minor injury, or possible injury.

<sup>2</sup> Excludes people in or on buses, heavy trucks, motorcycles, or ATVs.

**Figure 8: Seatbelt Use by People in Crashes with Fatal or Suspected Serious Injuries in Gallup, 2012-2016**

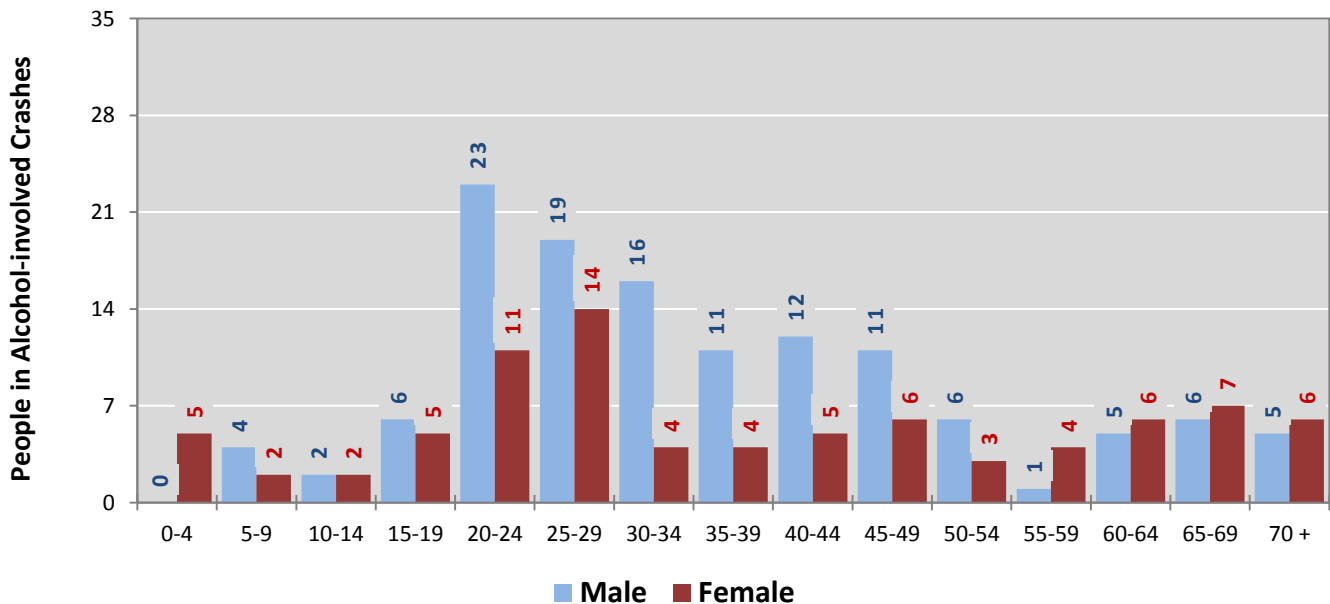


**Figure 9: People in Crashes by Age Group and Sex in Gallup, 2016**



\* In 2016, Gallup had 345 people in crashes for which age or sex data were missing.

**Figure 10: People in Alcohol-involved Crashes by Age Group and Sex in Gallup, 2016**



\* In 2016, Gallup had 34 people in alcohol-involved crashes for which age or sex data were missing.



**Table 18: Pedestrians and Pedalcyclists in Crashes by Age Group in Gallup, 2012-2016**

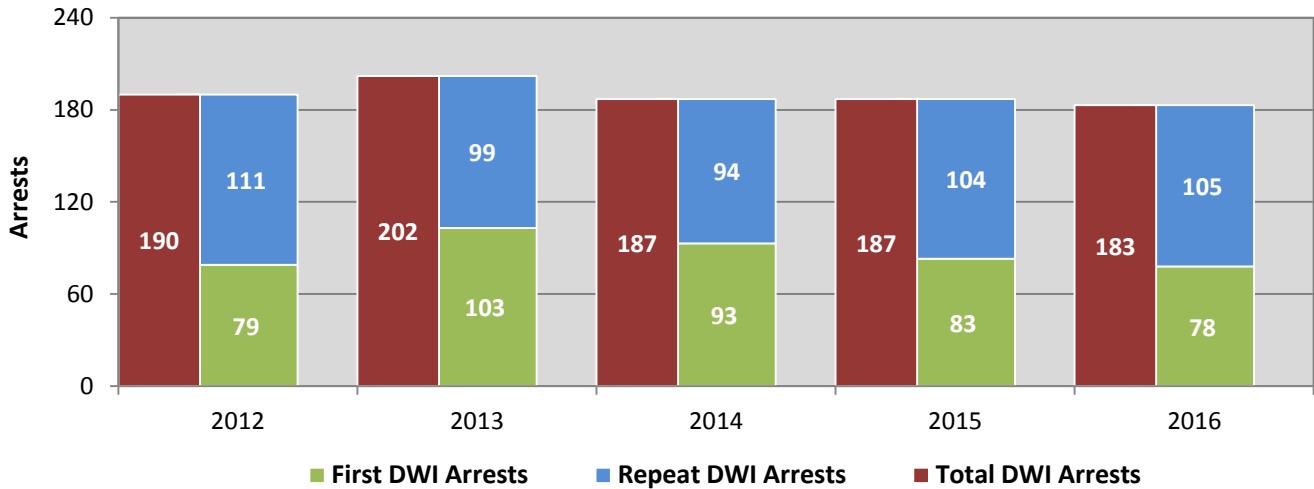
Age Groups	Pedestrians and Pedalcyclists <sup>1</sup> in Crashes					5-Year Total People
	2012	2013	2014	2015	2016	
0-4	0	1	0	0	0	1
5-9	2	1	0	1	0	4
10-14	0	0	3	1	0	4
15-19	1	1	2	2	0	6
20-24	4	4	3	1	2	14
25-29	1	4	5	3	5	18
30-34	1	3	7	0	1	12
35-39	4	5	0	4	1	14
40-44	2	1	2	5	1	11
45-49	3	2	4	2	2	13
50-54	2	0	3	7	3	15
55-59	3	2	0	0	0	5
60-64	1	1	1	0	0	3
65-69	0	1	2	0	1	4
70 +	2	0	0	1	0	3
Missing Data	2	2	4	3	4	15
<b>Total People</b>	<b>28</b>	<b>28</b>	<b>36</b>	<b>30</b>	<b>20</b>	<b>142</b>

**Table 19: Pedestrians and Pedalcyclists in Crashes by Alcohol Involvement and Severity of Injuries in Gallup, 2016**

Alcohol Involvement	Pedestrians and Pedalcyclists <sup>1</sup> in Crashes					Total People
	Fatalities (Class K)	Suspected Serious Injuries (Class A)	Suspected Minor Injuries (Class B)	Possible Injuries (Class C)	No Apparent Injury (Class O)	
<b>Total Pedalcyclists</b>	<b>0</b>	<b>0</b>	<b>1</b>	<b>0</b>	<b>1</b>	<b>2</b>
Involved	0	0	0	0	0	0
Not Involved	0	0	1	0	1	2
<b>Total Pedestrians</b>	<b>4</b>	<b>2</b>	<b>5</b>	<b>4</b>	<b>3</b>	<b>18</b>
Involved	3	2	2	2	2	11
Not Involved	1	0	3	2	1	7
<b>Total People</b>	<b>4</b>	<b>2</b>	<b>6</b>	<b>4</b>	<b>4</b>	<b>20</b>

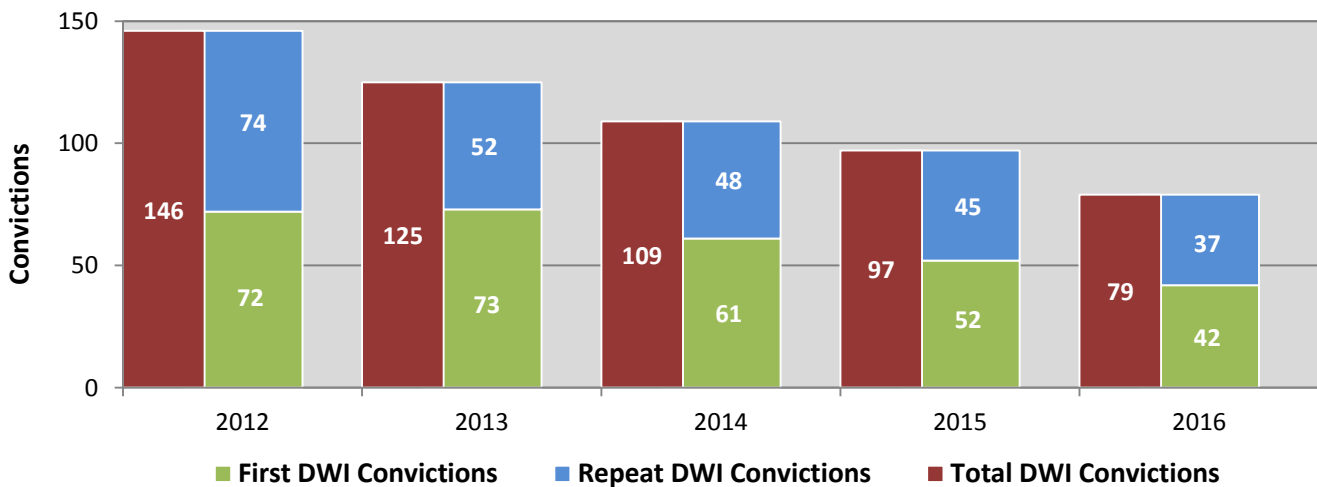
<sup>1</sup> Pedestrians and pedalcyclists are counted as non-motorized vehicles, when involved in a crash with a motor vehicle.

**Figure 11: DWI Arrests of Gallup Residents Throughout the State, Showing First and Repeat DWI Arrests, 2012-2016**



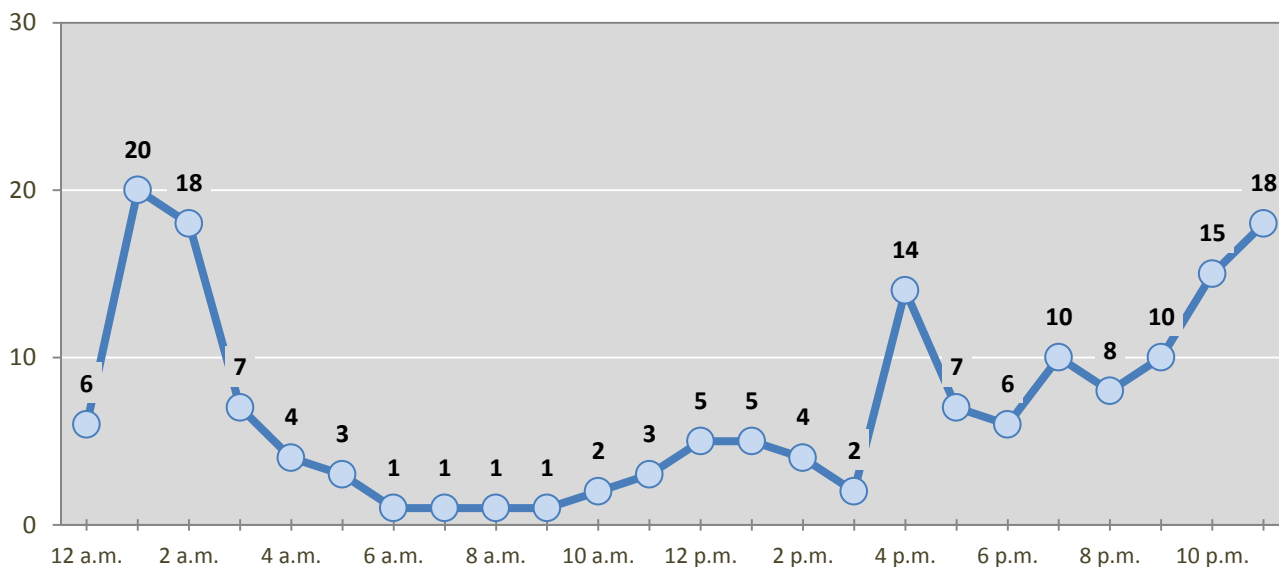
\*Values are based upon the year of the arrest.

**Figure 12: DWI Convictions of Gallup Residents Throughout the State, Showing First and Repeat DWI Convictions, 2012-2016**



\*Values are based upon the year of the conviction.

**Figure 13: DWI Arrests by Hour of Gallup Residents Throughout the State, 2016**



\* In 2016, Gallup had 12 arrests for which hour data were missing.

**Table 20: DWI Arrests by Day of Week of Gallup Residents Throughout the State, 2012-2016**

Day of Week	Year					5-Year Average
	2012	2013	2014	2015	2016	
Sunday	25	39	37	33	28	32
Monday	14	15	11	22	18	16
Tuesday	20	18	19	9	15	16
Wednesday	22	26	20	21	24	23
Thursday	30	30	28	29	24	28
Friday	42	36	37	35	31	36
Saturday	37	38	35	38	43	38
<b>Total Arrests</b>	<b>190</b>	<b>202</b>	<b>187</b>	<b>187</b>	<b>183</b>	<b>190</b>

**Table 21: Driver First DWI Arrests by Age Group of Gallup Residents Throughout the State, 2012-2016**

Age Groups	Driver First DWI Arrests <sup>1</sup>				
	2012	2013	2014	2015	2016
15-19	10	8	4	3	6
20-24	26	26	22	23	18
25-29	15	31	24	22	20
30-34	10	10	20	11	9
35-39	6	14	8	9	12
40-44	8	5	5	2	3
45-49	3	1	4	3	1
50-54	0	4	1	5	4
55-59	0	1	2	2	0
60-64	0	1	2	2	1
65-69	0	1	0	0	0
70 +	0	0	0	0	3
Missing Data	1	1	1	1	1
<b>Total Drivers</b>	<b>79</b>	<b>103</b>	<b>93</b>	<b>83</b>	<b>78</b>

<sup>1</sup>Values are based upon the year of the arrest.

**Table 22: Driver Repeat DWI Arrests by Age Group of Gallup Residents Throughout the State, 2012-2016**

Age Groups	Driver Repeat DWI Arrests <sup>1</sup>				
	2012	2013	2014	2015	2016
15-19	1	2	0	1	1
20-24	15	8	8	8	7
25-29	13	16	16	18	18
30-34	20	21	21	13	21
35-39	17	16	12	15	14
40-44	10	18	11	14	17
45-49	6	5	12	17	8
50-54	17	8	6	11	8
55-59	10	4	2	6	5
60-64	0	1	4	0	2
65-69	2	0	2	1	4
70 +	0	0	0	0	0
Missing Data	0	0	0	0	0
<b>Total Drivers</b>	<b>111</b>	<b>99</b>	<b>94</b>	<b>104</b>	<b>105</b>

<sup>1</sup>Values are based upon the year of the arrest.

**Table 23: Driver First DWI Convictions by Age Group of Gallup Residents Throughout the State, 2012-2016**

Age Groups	Driver First DWI Convictions <sup>1</sup>				
	2012	2013	2014	2015	2016
15-19	4	6	2	2	1
20-24	26	19	9	13	11
25-29	15	19	17	15	14
30-34	6	9	11	12	3
35-39	5	7	10	4	8
40-44	6	7	7	2	1
45-49	3	0	2	1	1
50-54	5	4	0	1	1
55-59	2	1	0	2	0
60-64	0	0	2	0	1
65-69	0	0	1	0	0
70 +	0	0	0	0	0
Missing Data	0	1	0	0	1
<b>Total Drivers</b>	<b>72</b>	<b>73</b>	<b>61</b>	<b>52</b>	<b>42</b>

<sup>1</sup> Values are based upon the year of the conviction.

**Table 24: Driver Repeat DWI Convictions by Age Group of Gallup Residents Throughout the State, 2012-2016**

Age Groups	Driver Repeat DWI Convictions <sup>1</sup>				
	2012	2013	2014	2015	2016
15-19	0	0	0	1	0
20-24	7	3	4	4	1
25-29	12	6	8	6	5
30-34	18	12	12	9	7
35-39	7	12	5	4	6
40-44	12	6	7	6	7
45-49	8	4	2	9	3
50-54	5	4	3	5	5
55-59	4	4	4	1	2
60-64	0	1	2	0	0
65-69	1	0	1	0	1
70 +	0	0	0	0	0
Missing Data	0	0	0	0	0
<b>Total Drivers</b>	<b>74</b>	<b>52</b>	<b>48</b>	<b>45</b>	<b>37</b>

<sup>1</sup> Values are based upon the year of the conviction.

**Table 25: Court Disposition of DWI Arrests for the State and of Gallup Residents Throughout the State, 2016**

Court Disposition of DWI Arrest <sup>1</sup>	Gallup	Statewide	Percent of Statewide
Total DWI Arrests	183	10,344	<b>1.8%</b>
DWI Arrests Resulting in Convictions	78	5,541	<b>1.4%</b>
DWI Arrests Resulting in Dismissals <sup>2</sup>	28	1,512	<b>1.9%</b>
DWI Arrests Awaiting Disposition	77	3,291	<b>2.3%</b>

<sup>1</sup> These are the number of DWI arrests in 2016 and whether the case resulted in a conviction or dismissal, or is still awaiting court disposition, as reported in the NM MVD Citation Tracking System (CTS) as of December 2017.

<sup>2</sup> For this table, a very small number of "not guilty" rulings may be included in the category Dismissals.

**Table 26: Average Number of Days from Date of DWI Arrest to Date of Court Disposition for the State and of Gallup Residents Throughout the State, 2016**

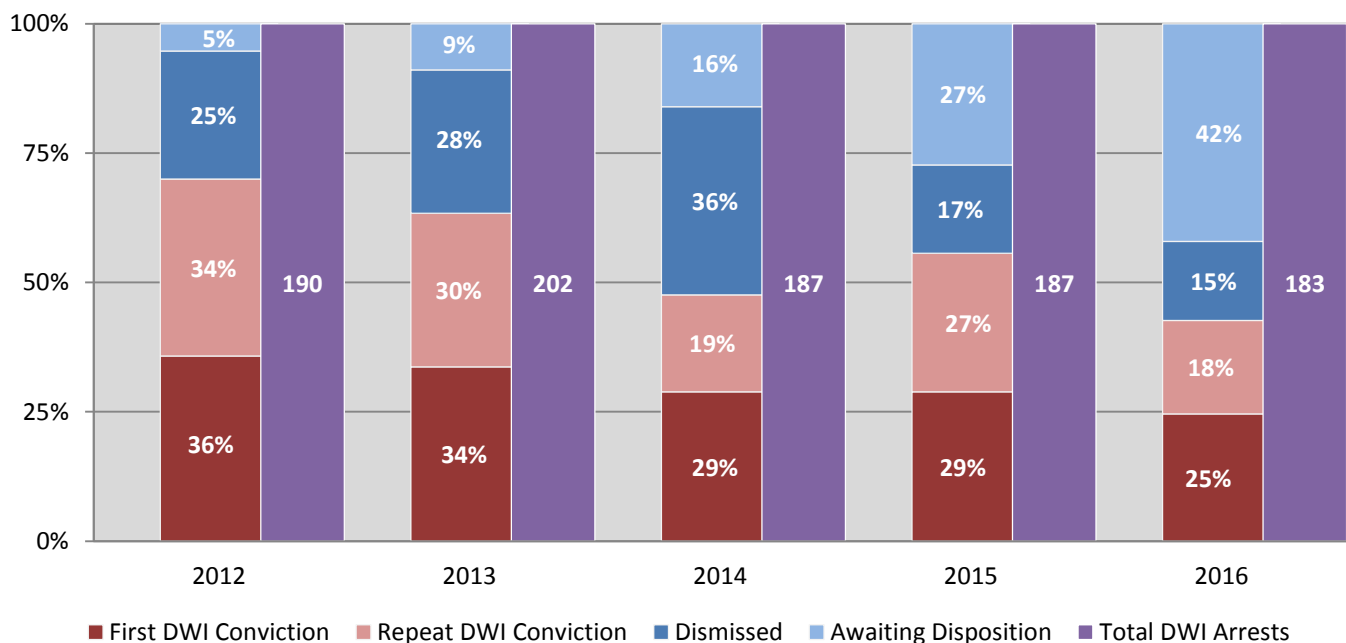
Court Disposition	Average Number of Days		Deviation from Statewide Average
	Gallup	Statewide	
DWI Conviction	145	157	<b>-12</b>
DWI Dismissal	168	179	<b>-11</b>

**Table 27: Court Disposition of DWI Arrests of Gallup Residents Throughout the State, 2012-2016**

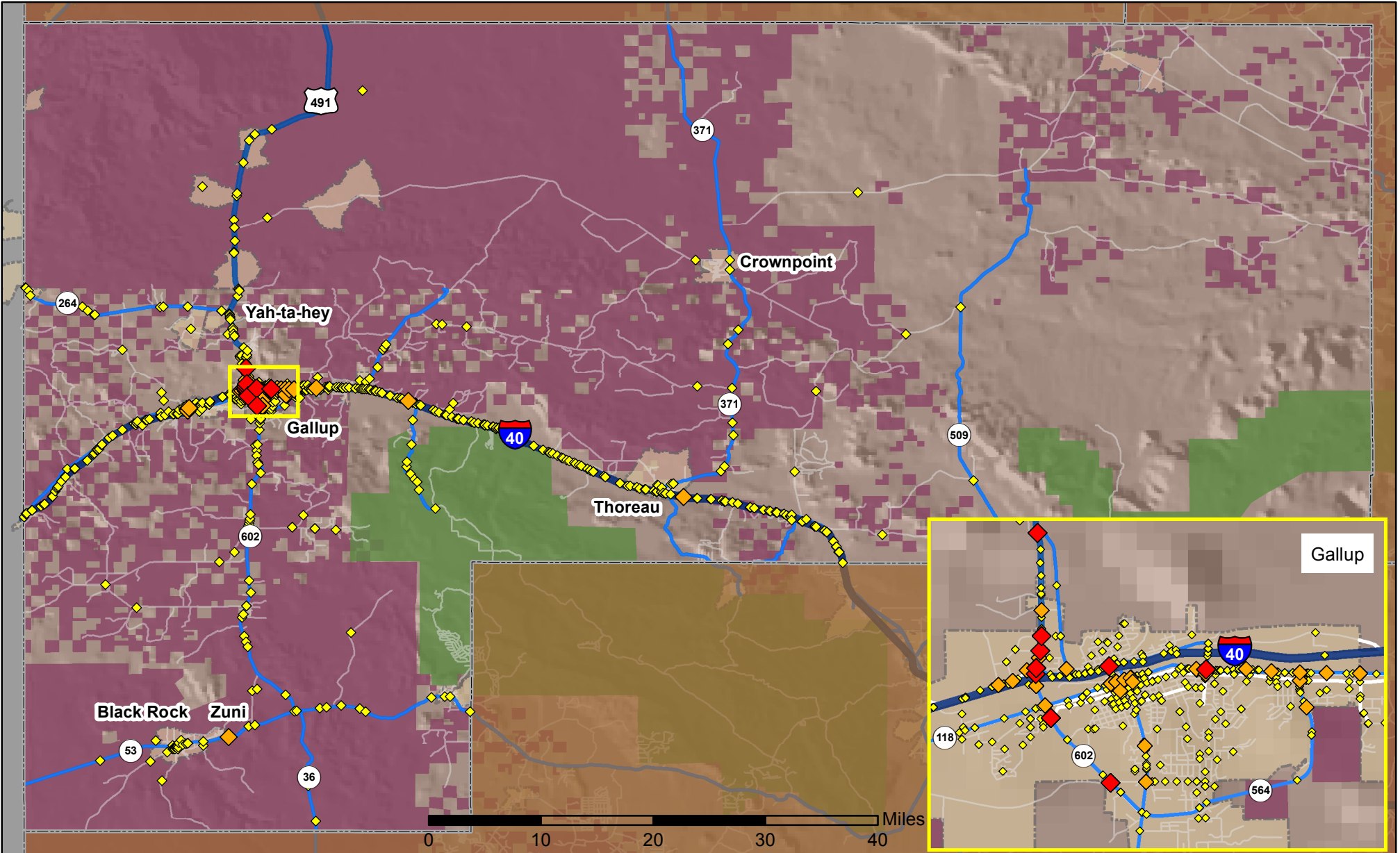
Year of DWI Arrest <sup>1</sup>	Court Disposition				Total DWI Arrests
	First DWI Conviction	Repeat DWI Conviction	Dismissed	Awaiting Disposition	
2012	68	65	47	10	190
2013	68	60	56	18	202
2014	54	35	68	30	187
2015	54	50	32	51	187
2016	45	33	28	77	183

<sup>1</sup> Values are based upon the year of the arrest.

**Figure 14: Court Dispositions by Percentage of DWI Arrests of Gallup Residents Throughout the State, 2012-2016**



\*Table 27 contains the values used to calculate percentages shown in Figure 14.



## Legend

Data Source: NMDOT Crash File 2016  
<http://tru.unm.edu> CO#5801 tru@unm.edu

- Forest & Wildlife Areas
- Reservations & Pueblos
- County Boundaries
- City Boundaries

- Interstate Highways
- U.S. Highways
- State Highways
- Streets & Roadways

## Crashes 2016

- 1 - 3 Crashes
- 4 - 10 Crashes
- 11 - 32 Crashes