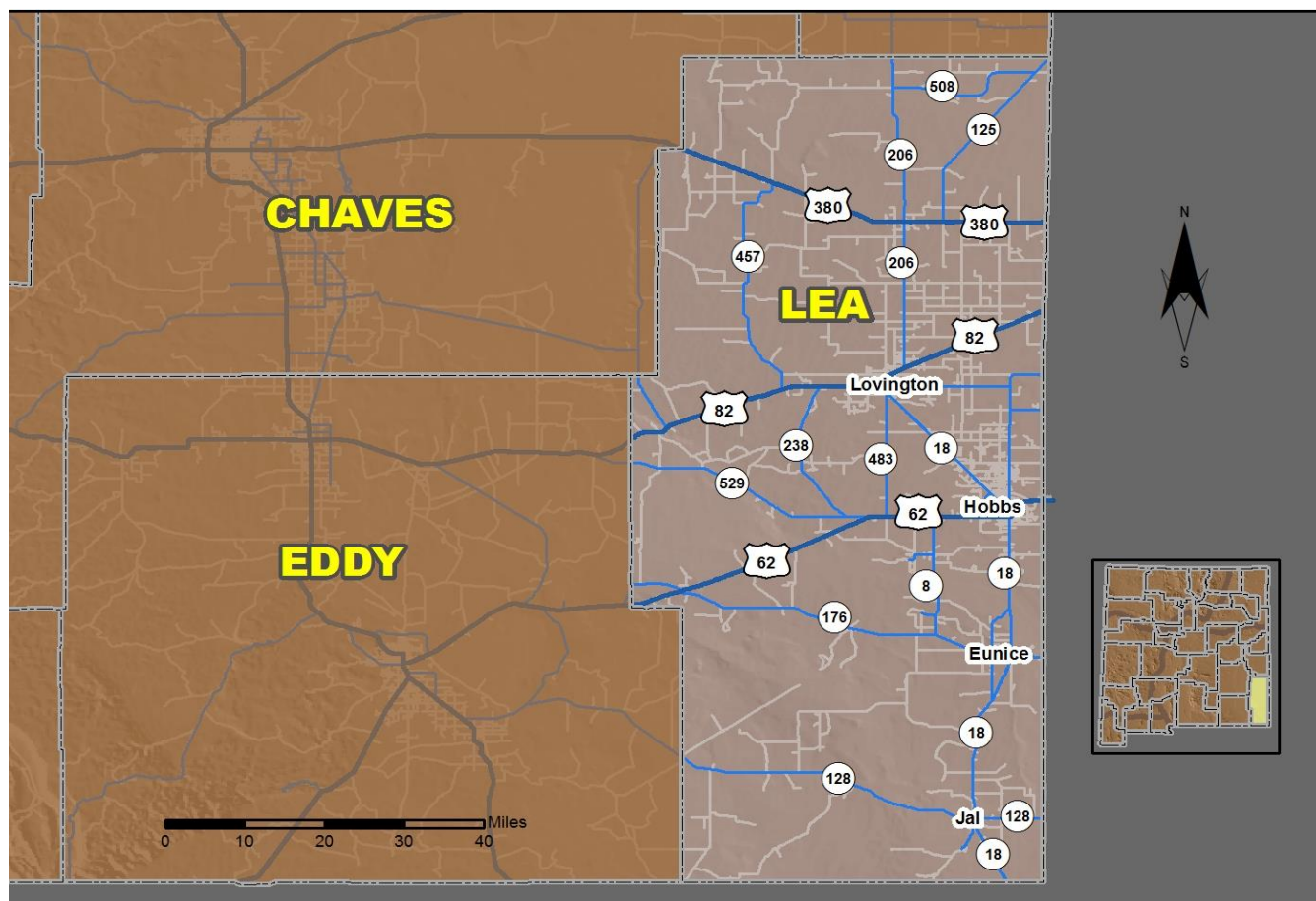


# 2016 Community Report

## Hobbs



Produced for the New Mexico Department of Transportation,  
Traffic Safety Division, Traffic Records Bureau,  
Under Contract 5801 by the University of New Mexico,  
Geospatial and Population Studies, Traffic Research Unit

Distributed in compliance with New Mexico Statute 66-7-214  
as a reference source regarding New Mexico traffic crashes

For the purposes of this report, data are compiled by the University of New Mexico, Geospatial and Population Studies, Traffic Research Unit (TRU), on behalf of the New Mexico Department of Transportation (NMDOT). Data in this report may differ from that in other data sources, such as the Federal Fatality Analysis Reporting System (FARS), due to the timing of publications and rules for how data are compiled and maintained in Federal vs. State databases. If you have questions regarding this report, please contact the Traffic Safety Division at 505-827-0427.

<http://tru.unm.edu/Crash-Reports/Community-Reports/>

## Definitions

---

**Aggravated DWI** – A driver arrested for 1) driving with a BAC of 0.16 or higher, 2) driving under the influence of alcohol or drugs and causing bodily injury to a human being as a result, or 3) driving under the influence of alcohol or drugs and refusing to submit to a BAC test at the time of arrest for DWI.

**Alcohol-involved Crash** – A crash for which the Uniform Crash Report indicated that 1) a DWI citation was issued, 2) alcohol was a contributing factor, or 3) a person in control of a vehicle (including a pedestrian or pedalcyclist) was suspected of being under the influence of alcohol.

**Alcohol-involved Driver** – A person in control of a vehicle who was cited for DWI or indicated on the Uniform Crash Report as being either suspected or determined by testing to be under the influence of alcohol. There can be multiple alcohol-involved drivers in a single alcohol-involved crash.

**Crash** – A reported incident on a public roadway involving one or more motor vehicles that resulted in death, personal injury, or at least \$500 in property damage. Crashes on private property (such as a parking lot) are not included.

**DWI Arrest (Citation)** – In this report, a DWI arrest (a.k.a. a DWI citation) is a driver arrested for either DWI or aggravated DWI. New Mexico’s legal limit for presumption of driving while intoxicated (DWI) is 0.08 for non-commercial drivers older than 21 years of age, 0.04 for commercial vehicle drivers, and 0.02 for drivers younger than 21 years of age.

**DWI Conviction** – A driver convicted of driving under the intoxicating influence of alcohol, narcotics, or pathogenic drugs, including aggravated DWI.

**Fatal Crash** – A crash in which at least one person was killed. More than one person can be killed in a single fatal crash.

**Fatalities** – The number of people killed in a crash. The terms “killed” and “deaths” are synonymous with “fatalities.” A fatality is crash-related if it occurs at the time of the crash or if the person(s) involved in the crash dies within 30 days.

**Injury Crash** – A reported crash in which at least one person was injured. Injury crashes involve at least one suspected serious injury (Class A), suspected minor injury (Class B), or possible injury (Class C). Fatal crashes are not included.

**Missing Data** – An indication that the applicable field on the UCR form was left blank or contained an invalid code. Starting with crashes that occurred in 2012, improvements in the identification of missing data in the NMDOT crash database led to an increase in the reported amount of missing data.

**Pedalcyclist** – A person riding a mechanism of transport that is powered solely by pedals (a.k.a. bicyclist).

**Pedestrian** – A person on foot, walking, running, jogging, hiking, sitting or lying down who is involved in a motor vehicle traffic crash.

## Sources

---

**Crash Data** – New Mexico Department of Transportation, Traffic Safety Division, Traffic Records Bureau, Traffic Crash Database, as of the report date below. Crash data are compiled using NMDOT Uniform Crash Reports (UCR), submitted by law enforcement agencies in the state, for any incident on a public roadway involving one or more motor vehicles that resulted in death, injury, or at least \$500 in property damage. These reports are processed by the NMDOT Traffic Records Bureau and analyzed by the University of New Mexico, Geospatial and Population Studies, Traffic Research Unit (TRU).

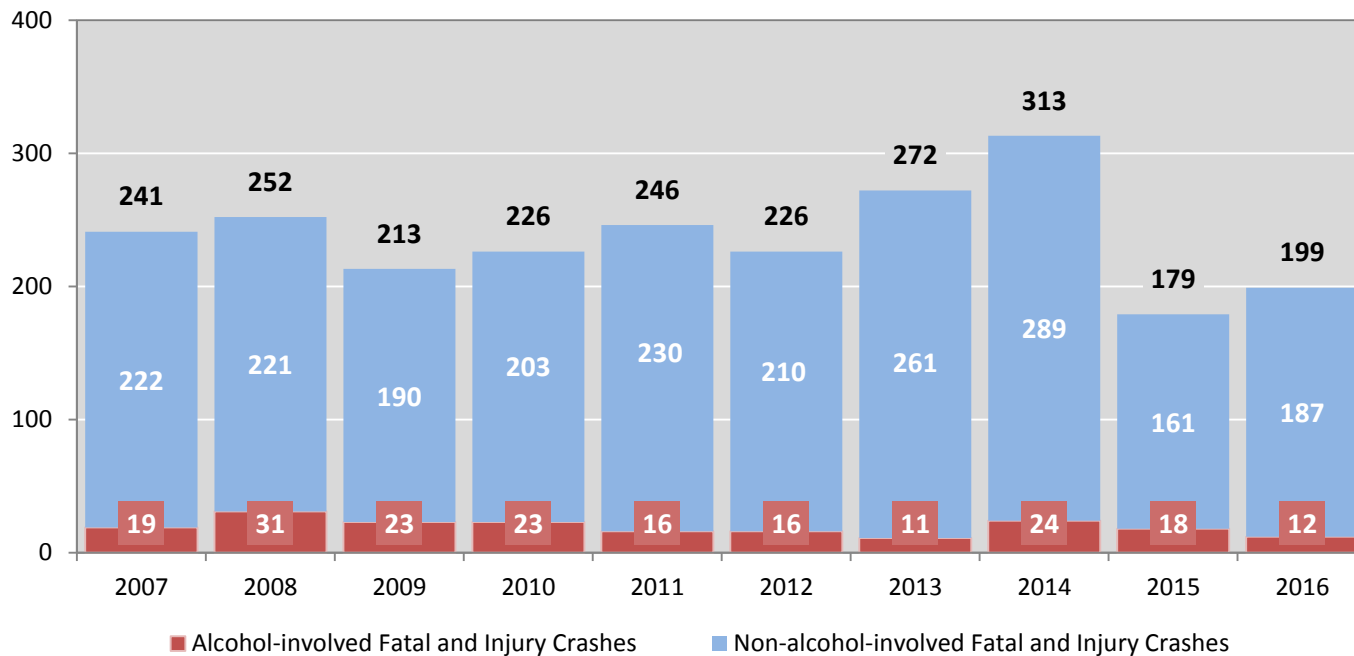
**DWI Citation Tracking System (CTS)** – New Mexico Taxation and Revenue Department (NM TRD), Motor Vehicle Division (MVD), DWI Citation Tracking System (CTS), as of December 2017. Repeat offenders are identified by the combination of account key, arrest date, and citation number. County data are based upon the county where the arrest took place. City data are based upon the city where the offender resides.

**Urban Areas** – New Mexico Department of Transportation, Asset Management and Planning, 2010 U.S. Census Urbanized Area Boundaries, NMDOT-Adjusted, and U.S. Census Urban Clusters, August 21, 2013. In crashes before 2013, “urban” was defined as a town or city with a population of at least 2,500 people.

**Table 1: Total Crashes and Alcohol-involved Crashes by Crash Severity in Hobbs, 2007-2016**

Year	Total Crashes				Alcohol-involved Crashes			
	Fatal	Injury	Property Damage Only	Total	Fatal	Injury	Property Damage Only	Total
2007	2	239	704	945	1	18	18	37
2008	3	249	683	935	1	30	50	81
2009	2	211	518	731	2	21	28	51
2010	4	222	574	800	2	21	31	54
2011	0	246	640	886	0	16	32	48
2012	5	221	571	797	2	14	22	38
2013	3	269	519	791	1	10	20	31
2014	5	308	505	818	3	21	23	47
2015	3	176	365	544	1	17	12	30
2016	2	197	373	572	1	11	13	25

**Figure 1: Alcohol-involved Fatal and Injury Crashes Compared with Non-alcohol-involved Fatal and Injury Crashes in Hobbs, 2007-2016**



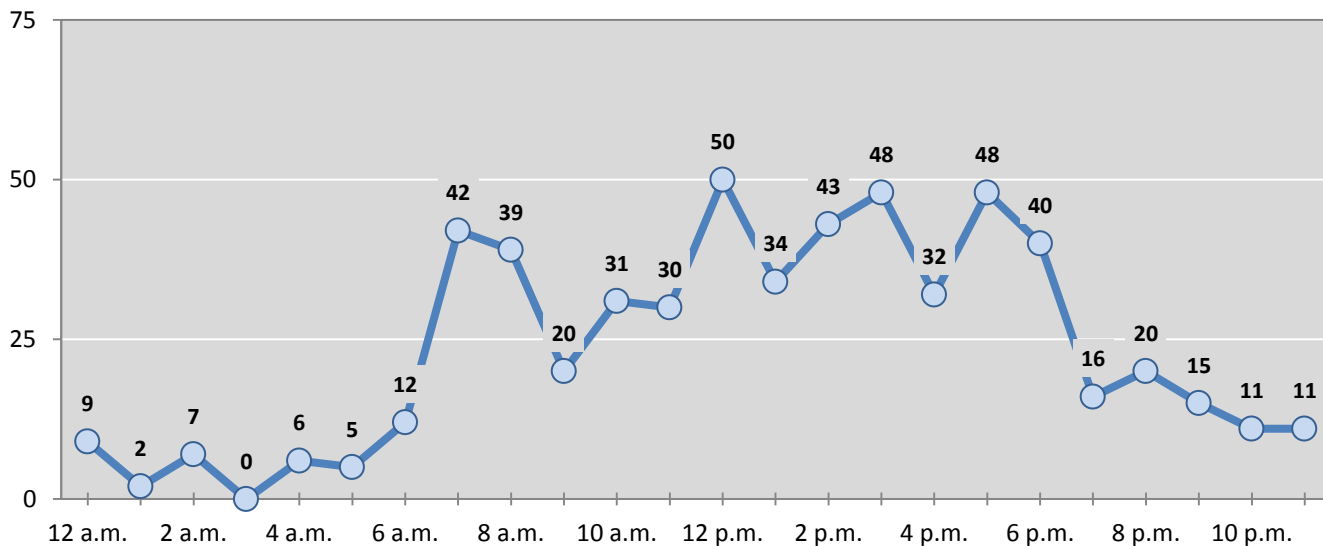
**Table 2: Crashes by Month in Hobbs, 2012-2016**

Month	Crashes					5-Year Average
	2012	2013	2014	2015	2016	
January	77	54	57	62	55	61
February	61	49	75	54	49	58
March	40	55	70	56	51	54
April	58	45	70	66	46	57
May	68	54	77	17	58	55
June	66	62	67	51	41	57
July	64	74	46	62	32	56
August	86	87	62	20	41	59
September	65	81	70	23	55	59
October	79	73	78	53	50	67
November	63	71	71	39	47	58
December	70	86	75	41	47	64
<b>Total Crashes</b>	<b>797</b>	<b>791</b>	<b>818</b>	<b>544</b>	<b>572</b>	<b>704</b>

**Table 3: Alcohol-involved Crashes by Month in Hobbs, 2012-2016**

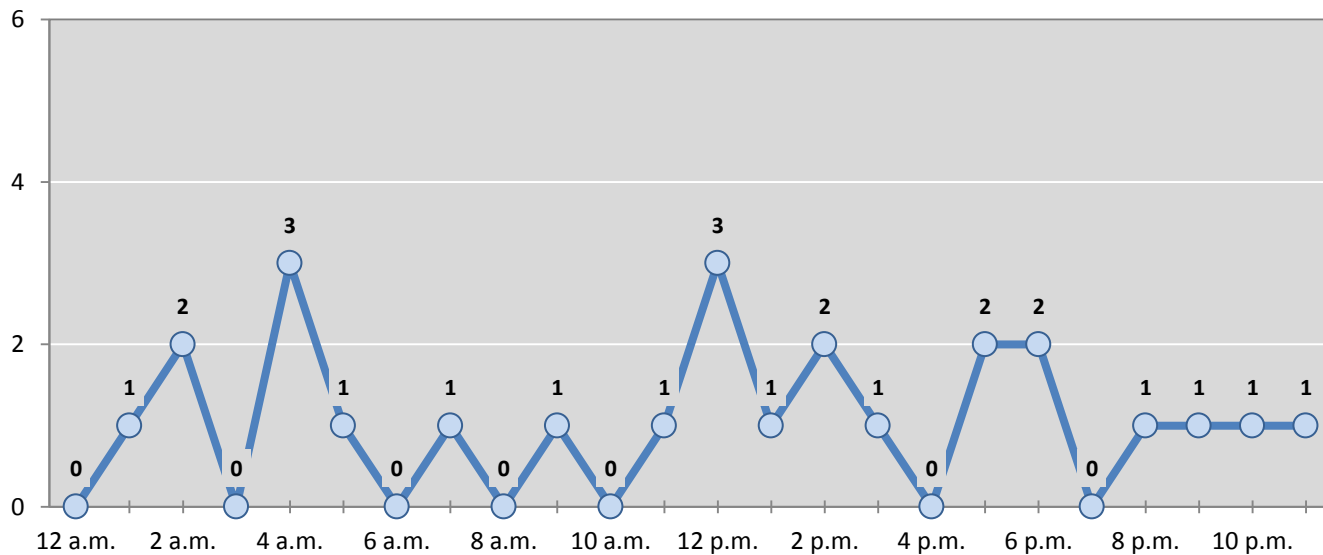
Month	Alcohol-involved Crashes					5-Year Average
	2012	2013	2014	2015	2016	
January	2	2	2	4	2	2
February	7	3	2	2	1	3
March	2	3	5	3	2	3
April	3	5	7	2	3	4
May	3	1	4	1	5	3
June	4	4	2	5	3	4
July	3	0	5	4	1	3
August	5	2	4	1	1	3
September	4	3	2	2	2	3
October	1	2	5	1	2	2
November	3	1	7	4	2	3
December	1	5	2	1	1	2
<b>Total Crashes</b>	<b>38</b>	<b>31</b>	<b>47</b>	<b>30</b>	<b>25</b>	<b>34</b>

**Figure 2: Crashes by Hour in Hobbs, 2016**



\* In 2016, Hobbs had 1 crashes for which hour data were missing.

**Figure 3: Alcohol-involved Crashes by Hour in Hobbs, 2016**



\* In 2016, Hobbs had 0 alcohol-involved crashes for which hour data were missing.

**Table 4: Alcohol-involved Crashes by Day of Week in Hobbs, 2012-2016**

Day of Week	Alcohol-involved Crashes					5-Year Average
	2012	2013	2014	2015	2016	
Sunday	8	6	9	6	8	7
Monday	2	4	4	3	4	3
Tuesday	2	2	5	5	2	3
Wednesday	5	2	2	2	3	3
Thursday	5	2	7	7	2	5
Friday	6	3	8	2	0	4
Saturday	10	12	12	5	6	9
<b>Total Crashes</b>	<b>38</b>	<b>31</b>	<b>47</b>	<b>30</b>	<b>25</b>	<b>34</b>

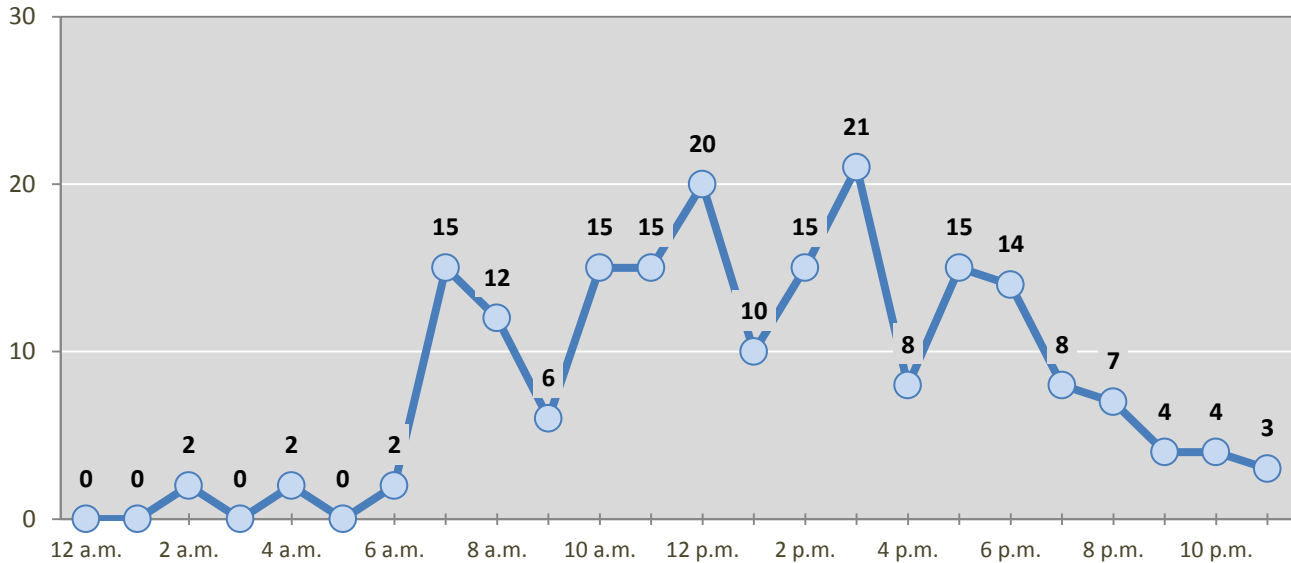
**Table 5: Fatal and Injury Crashes by Day of Week in Hobbs, 2012-2016**

Day of Week	Fatal and Injury Crashes					5-Year Average
	2012	2013	2014	2015	2016	
Sunday	21	29	27	13	21	22
Monday	33	43	46	20	28	34
Tuesday	36	42	56	29	39	40
Wednesday	34	30	56	24	28	34
Thursday	36	49	44	43	25	39
Friday	40	46	43	30	35	39
Saturday	26	33	41	20	23	29
<b>Total Crashes</b>	<b>226</b>	<b>272</b>	<b>313</b>	<b>179</b>	<b>199</b>	<b>238</b>

**Table 6: Pedestrian and Pedalcyclist Crashes by Day of Week in Hobbs, 2012-2016**

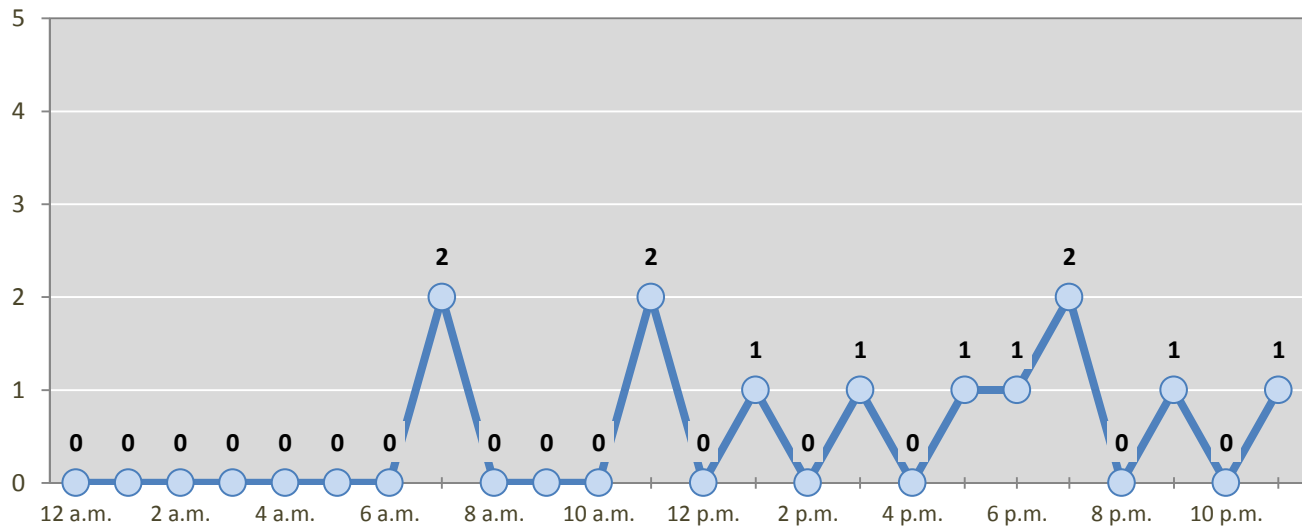
Day of Week	Pedestrian and Pedalcyclist Crashes					5-Year Average
	2012	2013	2014	2015	2016	
Sunday	1	0	2	1	2	1
Monday	1	1	3	0	1	1
Tuesday	4	4	1	1	5	3
Wednesday	3	3	4	1	1	2
Thursday	2	2	3	1	0	2
Friday	4	1	1	0	1	1
Saturday	2	3	3	2	2	2
<b>Total Crashes</b>	<b>17</b>	<b>14</b>	<b>17</b>	<b>6</b>	<b>12</b>	<b>13</b>

**Figure 4: Fatal and Injury Crashes by Hour in Hobbs, 2016**



\* In 2016, Hobbs had 1 crashes for which hour data were missing.

**Figure 5: Pedestrian and Pedalcyclist Crashes by Hour in Hobbs, 2016**



\* In 2016, Hobbs had 0 crashes for which hour data were missing.

**Table 7: Severity of Injuries to People in Crashes by Rural and Urban Location in Hobbs, 2016**

Urban and Rural Locations by Alcohol-involvement	People in Crashes by Severity of Injuries					Total People
	Fatalities (Class K)	Suspected Serious Injuries (Class A)	Suspected Minor Injuries (Class B)	Possible Injuries (Class C)	No Apparent Injuries (Class O)	
<b>People in Alcohol-involved Crashes</b>	<b>1</b>	<b>1</b>	<b>6</b>	<b>11</b>	<b>50</b>	<b>69</b>
Urban	0	0	5	11	43	59
Rural Non-Interstate	1	1	1	0	7	10
Rural Interstate	0	0	0	0	0	0
<b>People in Crashes</b>	<b>2</b>	<b>6</b>	<b>73</b>	<b>212</b>	<b>1,253</b>	<b>1,546</b>
Urban	1	4	71	203	1,212	1,491
Rural Non-Interstate	1	2	2	9	41	55
Rural Interstate	0	0	0	0	0	0
<b>Percent in Alcohol-involved Crashes</b>	<b>50%</b>	<b>17%</b>	<b>8%</b>	<b>5%</b>	<b>4%</b>	<b>4%</b>

**Table 8: Total Crashes by Roadway System and Crash Severity in Hobbs, 2012-2016**

Crash Severity by System	Crashes by Year					5-Year Average
	2012	2013	2014	2015	2016	
<b>Total Rural Interstate</b>	<b>0</b>	<b>0</b>	<b>0</b>	<b>0</b>	<b>0</b>	<b>0</b>
Fatal Crash	0	0	0	0	0	0
Injury Crash	0	0	0	0	0	0
Property Damage Only Crash	0	0	0	0	0	0
<b>Total Rural Non-Interstate</b>	<b>0</b>	<b>36</b>	<b>58</b>	<b>24</b>	<b>29</b>	<b>29</b>
Fatal Crash	0	0	1	0	1	0
Injury Crash	0	13	20	8	8	10
Property Damage Only Crash	0	23	37	16	20	19
<b>Total Urban</b>	<b>797</b>	<b>755</b>	<b>760</b>	<b>520</b>	<b>543</b>	<b>674</b>
Fatal Crash	5	3	4	3	1	3
Injury Crash	221	256	288	168	189	224
Property Damage Only Crash	571	496	468	349	353	447



**Table 9: Total Crashes by Crash Classification in Hobbs, 2012-2016**

Crash Classification	Total Crashes by Year					5-Year Average
	2012	2013	2014	2015	2016	
Animal	4	5	7	4	9	6
Fixed Object	65	64	71	43	38	56
Other (Non-Collision)	10	10	4	3	6	7
Other (Object)	17	10	14	8	3	10
Other Vehicle	594	574	565	399	437	514
Overturn/Rollover	19	24	23	9	9	17
Parked Vehicle	42	57	54	33	46	46
Pedalcyclist	7	5	3	2	5	4
Pedestrian	10	9	14	4	7	9
Railroad Train	1	0	0	1	0	0
Rollover	0	0	0	17	3	4
Vehicle on Other Road	23	14	48	5	9	20
Missing Data	5	19	15	16	0	11
<b>Total Crashes</b>	<b>797</b>	<b>791</b>	<b>818</b>	<b>544</b>	<b>572</b>	<b>704</b>

**Table 10: Vehicles in Crashes by Vehicle Type in Hobbs, 2012-2016**

Vehicle Type <sup>1</sup>	Vehicles in Crashes by Vehicle Type					5-Year Average
	2012	2013	2014	2015	2016	
Bus	7	2	3	1	2	3
Motorcycle	19	22	22	18	13	19
Passenger	628	562	421	289	430	466
Pedalcyclist	7	6	4	2	5	5
Pedestrian	10	10	14	4	7	9
Pickup	435	492	500	336	310	415
Semi	44	46	47	23	31	38
Van/SUV/4WD	295	300	239	199	230	253
Other Vehicle	8	19	1	4	1	7
Missing Data	85	102	355	185	70	159
<b>Total Vehicles</b>	<b>1,538</b>	<b>1,561</b>	<b>1,606</b>	<b>1,061</b>	<b>1,099</b>	<b>1,373</b>

<sup>1</sup> Pedestrians and pedalcyclists are counted as non-motorized vehicles, when involved in a crash with a motor vehicle. See Page 17 for data on drivers of non-motorized vehicles in crashes (i.e. pedestrians and pedalcyclists).

**Table 11: Motor Vehicle Drivers in Crashes by Vehicle Type and Age Group in Hobbs, 2016**

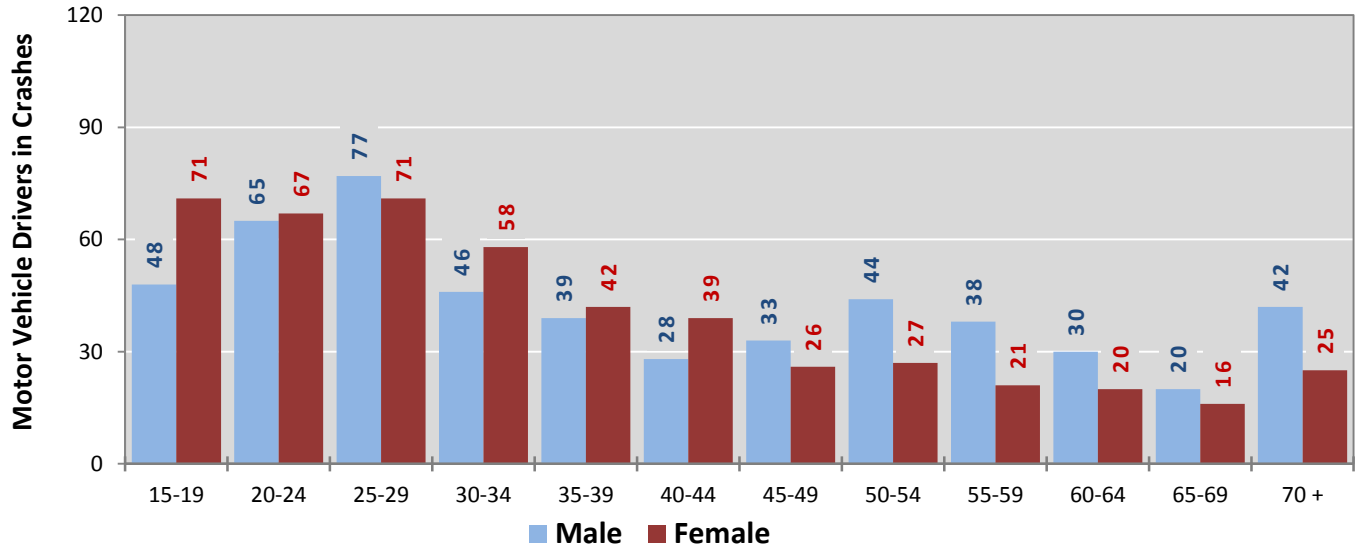
Age Groups	Motor Vehicle <sup>1</sup> Drivers by Vehicle Type and Age Group								Total Drivers
	Bus	Motor-cycle	Passenger	Pickup	Semi	Van 4WD SUV	Other Vehicle	Missing Data	
15-19	0	1	68	23	0	19	0	8	119
20-24	0	4	63	34	0	24	0	7	132
25-29	0	2	66	44	3	29	0	4	148
30-34	0	0	44	26	2	30	1	1	104
35-39	0	2	21	25	4	24	0	5	81
40-44	2	1	22	17	5	20	0	0	67
45-49	0	0	13	23	7	14	0	2	59
50-54	0	1	24	21	4	18	0	3	71
55-59	0	1	19	25	2	11	0	1	59
60-64	0	1	18	20	1	8	0	2	50
65-69	0	0	10	13	0	11	0	2	36
70 +	0	0	28	21	0	15	0	3	67
Missing Data	0	0	34	18	3	7	0	32	94
<b>Total Drivers</b>	<b>2</b>	<b>13</b>	<b>430</b>	<b>310</b>	<b>31</b>	<b>230</b>	<b>1</b>	<b>70</b>	<b>1,087</b>

**Table 12: Alcohol-involved Motor Vehicle Drivers in Crashes by Vehicle Type and Age Group in Hobbs, 2016**

Age Groups	Alcohol-involved Motor Vehicle <sup>1</sup> Drivers by Vehicle Type and Age Group								Total Drivers
	Bus	Motor-cycle	Passenger	Pickup	Semi	Van 4WD SUV	Other Vehicle	Missing Data	
15-19	0	0	1	1	0	0	0	0	2
20-24	0	0	1	1	0	1	0	0	3
25-29	0	1	4	3	0	0	0	0	8
30-34	0	0	0	0	0	0	0	0	0
35-39	0	0	0	0	0	1	0	0	1
40-44	0	0	1	0	2	0	0	0	3
45-49	0	0	0	0	0	1	0	0	1
50-54	0	0	1	1	0	0	0	0	2
55-59	0	1	1	0	0	1	0	0	3
60-64	0	0	0	1	0	0	0	0	1
65-69	0	0	0	0	0	0	0	0	0
70 +	0	0	0	0	0	1	0	0	1
Missing Data	0	0	0	0	0	0	0	0	0
<b>Total Drivers</b>	<b>0</b>	<b>2</b>	<b>9</b>	<b>7</b>	<b>2</b>	<b>5</b>	<b>0</b>	<b>0</b>	<b>25</b>

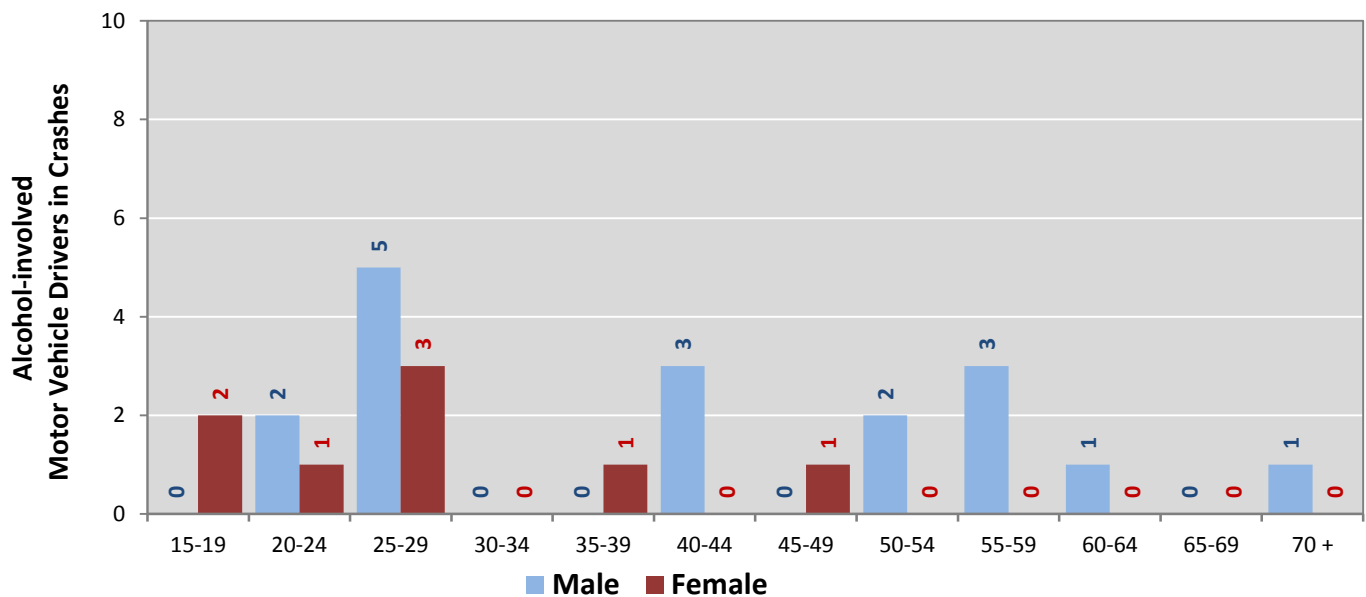
<sup>1</sup> See Page 17 for data on drivers of non-motorized vehicles in crashes (i.e. pedestrians and pedalcyclists).

**Figure 6: Motor Vehicle Drivers in Crashes by Age Group and Sex in Hobbs, 2016**



\* In 2016, Hobbs had 94 drivers in crashes for which age or sex data were missing.

**Figure 7: Alcohol-involved Motor Vehicle Drivers in Crashes by Age Group and Sex in Hobbs, 2016**



\* In 2016, Hobbs had 0 drivers in crashes for which age or sex data were missing.

**Table 13: Alcohol-involved Motor Vehicle Drivers Under 21 (Ages 15-20) in Crashes in Hobbs, 2012-2016**

Age <sup>1</sup>	Year					5-Year Total
	2012	2013	2014	2015	2016	
15	1	0	0	0	0	1
16	0	1	0	0	0	1
17	1	0	0	0	1	2
18	0	1	0	1	0	2
19	2	2	0	0	1	5
20	3	5	3	0	1	12
<b>Total Drivers</b>	<b>7</b>	<b>9</b>	<b>3</b>	<b>1</b>	<b>3</b>	<b>23</b>

**Table 14: Motor Vehicle Drivers Under 21 (Ages 15-20) in Crashes by Age, Sex and Alcohol-involvement in Hobbs, 2016**

Age <sup>1</sup>	Total Drivers				Alcohol-involved Drivers			
	Sex		Total Drivers	Percent of Total	Sex		Total Drivers	Percent of Total
	Male	Female			Male	Female		
15	3	4	7	5%	0	0	0	0%
16	10	10	20	13%	0	0	0	0%
17	12	16	28	19%	0	1	1	33%
18	17	17	34	23%	0	0	0	0%
19	6	24	30	20%	0	1	1	33%
20	19	12	31	21%	0	1	1	33%
<b>Total Drivers</b>	<b>67</b>	<b>83</b>	<b>150</b>	<b>100%</b>	<b>0</b>	<b>3</b>	<b>3</b>	<b>100%</b>

<sup>1</sup> For analysis of drivers under age 21, when the driver age or sex are not identified on the crash report (typically hit-and-run drivers), the driver data are considered unreliable and are excluded from the analysis.

**Table 15: Frequency of Contributing Factors in Crashes  
by Crash Severity in Hobbs, 2016**

Contributing Factors	Frequency of Contributing Factor <sup>1</sup> by Crash Severity			
	Frequency in Fatal Crashes	Frequency in Injury Crashes	Frequency in Property Damage Only Crashes	Frequency in All Crashes
<b>Human</b>	<b>4</b>	<b>306</b>	<b>485</b>	<b>795</b>
Driver Inattention	0	85	140	225
Failed to Yield Right of Way	1	61	81	143
Following Too Closely	0	36	67	103
Other Improper Driving	0	30	34	64
Made Improper Turn	1	19	42	62
Passed Stop Sign	0	15	14	29
Disregarded Traffic Signal	0	13	14	27
Improper Backing	0	2	23	25
Alcohol Involved	1	11	13	25
Excessive Speed	1	6	8	15
Speed Too Fast for Conditions	0	5	10	15
Improper Lane Change	0	2	12	14
Drug Involved	0	4	6	10
Drove Left Of Center	0	4	5	9
Improper Overtaking	0	2	5	7
Avoid No Contact - Vehicle	0	2	4	6
Pedestrian Error	0	4	0	4
Vehicle Skidded Before Brake	0	2	2	4
Cell Phone	0	1	2	3
Texting	0	1	2	3
Avoid No Contact - Other	0	1	1	2
Driverless Moving Vehicle	0	0	0	0
Failed to Yield to Emergency Vehicle	0	0	0	0
Failed to Yield to Police Vehicle	0	0	0	0
High Speed Pursuit	0	0	0	0
<b>Vehicle</b>	<b>0</b>	<b>2</b>	<b>8</b>	<b>10</b>
Other Mechanical Defect	0	2	5	7
Inadequate Brakes	0	0	2	2
Defective Tires	0	0	1	1
Defective Steering	0	0	0	0
<b>Environment</b>	<b>0</b>	<b>1</b>	<b>2</b>	<b>3</b>
Road Defect	0	1	2	3
Low Visibility Due to Smoke	0	0	0	0
Traffic Control Not Functioning	0	0	0	0
<b>Other</b>	<b>1</b>	<b>181</b>	<b>334</b>	<b>516</b>
None	1	167	305	473
Other - No Driver Error	0	14	29	43

<sup>1</sup> Multiple contributing factors may be reported for any vehicle in a crash.

**Table 16: People in Crashes by Crash Classification and Severity of Injuries in Hobbs, 2016**

Crash Classification	People in Crashes by Severity of Injuries					Total People
	Fatalities (Class K)	Suspected Serious Injuries (Class A)	Suspected Minor Injuries (Class B)	Possible Injuries (Class C)	No Apparent Injuries (Class O)	
Animal	0	0	2	0	11	13
Fixed Object	0	0	4	4	38	46
Other (Non-Collision)	0	0	1	0	7	8
Other (Object)	0	0	1	0	2	3
Other Vehicle	1	3	47	199	1,059	1,309
Overturn/Rollover	1	1	9	0	4	15
Parked Vehicle	0	0	2	1	94	97
Pedalcyclist	0	1	2	1	6	10
Pedestrian	0	1	2	4	11	18
Railroad Train	0	0	0	0	0	0
Rollover	0	0	3	2	2	7
Vehicle on Other Road	0	0	0	1	19	20
Missing Data	0	0	0	0	0	0
<b>Total People</b>	<b>2</b>	<b>6</b>	<b>73</b>	<b>212</b>	<b>1,253</b>	<b>1,546</b>

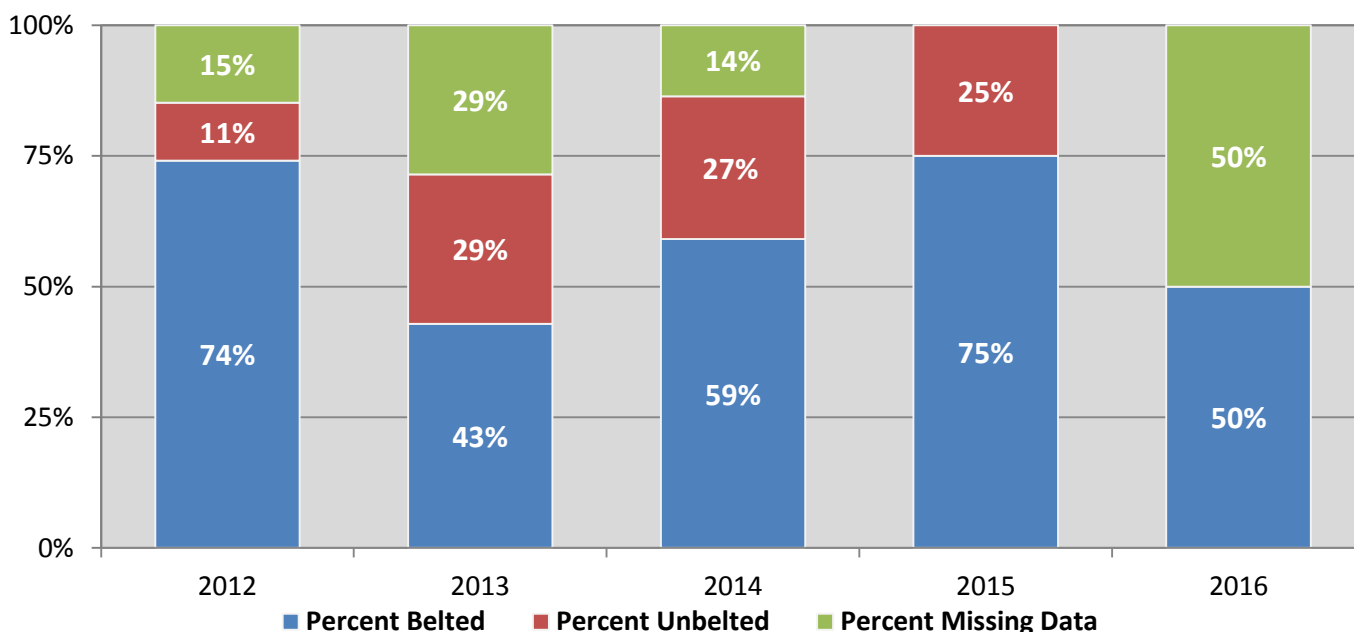
**Table 17: Killed or Injured Unbelted People in Crashes by Sex and Age Group in Hobbs, 2016**

Age Groups	Unbelted People Killed or Injured <sup>1,2</sup>				Total People
	Male	Percent of Male	Female	Percent of Female	
0-4	5	63%	0	0%	5
5-9	0	0%	1	33%	1
10-14	0	0%	0	0%	0
15-19	2	25%	0	0%	2
20-24	0	0%	0	0%	0
25-29	0	0%	0	0%	0
30-34	0	0%	1	33%	1
35-39	0	0%	0	0%	0
40-44	0	0%	0	0%	0
45-49	0	0%	0	0%	0
50-54	0	0%	0	0%	0
55-59	0	0%	1	33%	1
60-64	0	0%	0	0%	0
65-69	0	0%	0	0%	0
70 +	1	13%	0	0%	1
Missing Data	0	0%	0	0%	0
<b>Total People</b>	<b>8</b>	<b>100%</b>	<b>3</b>	<b>100%</b>	<b>11</b>

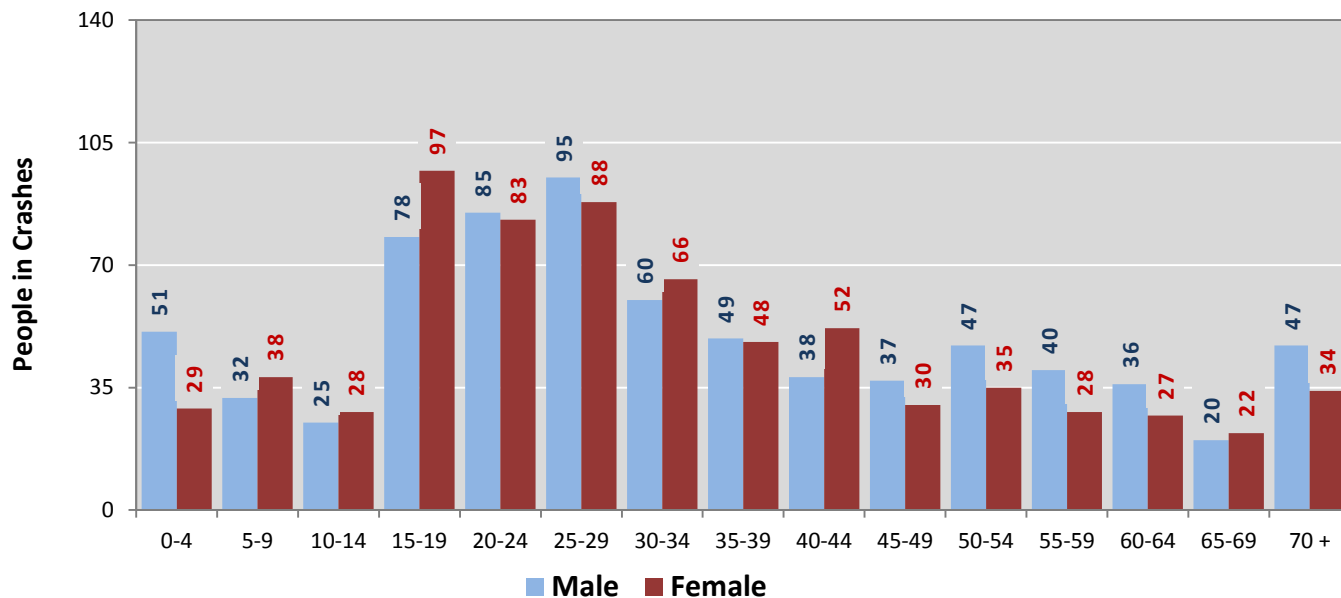
<sup>1</sup> People injured are in one of three categories: suspected serious injury, suspected minor injury, or possible injury.

<sup>2</sup> Excludes people in or on buses, heavy trucks, motorcycles, or ATVs.

**Figure 8: Seatbelt Use by People in Crashes with Fatal or Suspected Serious Injuries in Hobbs, 2012-2016**

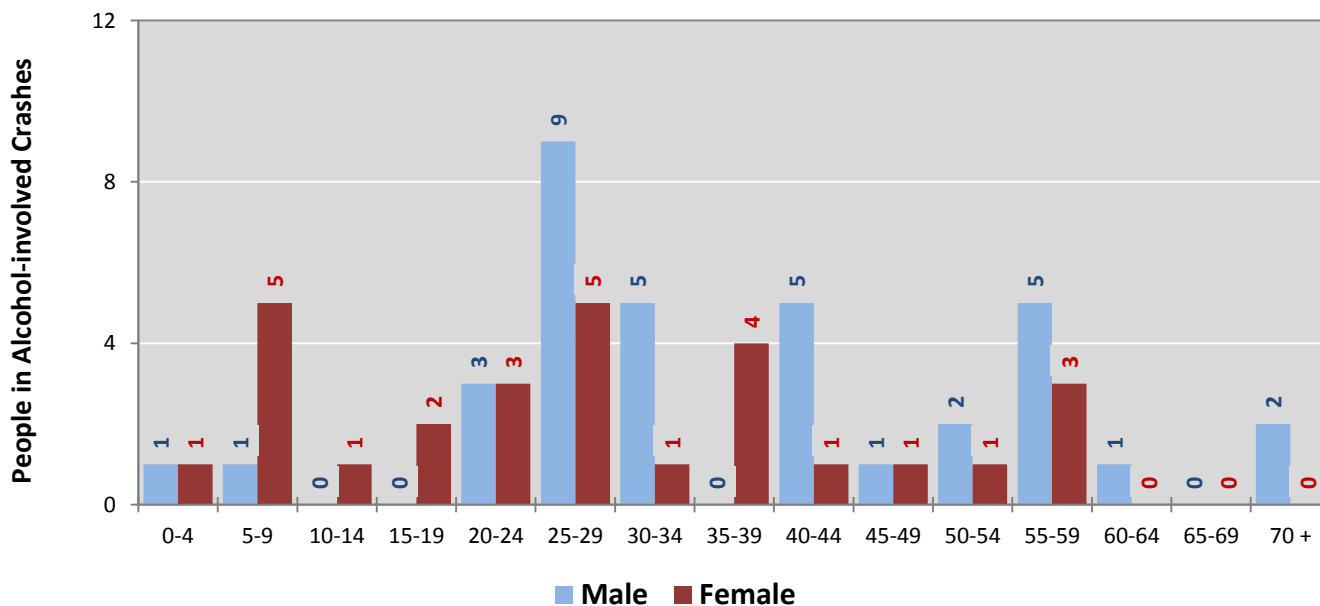


**Figure 9: People in Crashes by Age Group and Sex in Hobbs, 2016**



\* In 2016, Hobbs had 101 people in crashes for which age or sex data were missing.

**Figure 10: People in Alcohol-involved Crashes by Age Group and Sex in Hobbs, 2016**



\* In 2016, Hobbs had 6 people in alcohol-involved crashes for which age or sex data were missing.



**Table 18: Pedestrians and Pedalcyclists in Crashes  
by Age Group in Hobbs, 2012-2016**

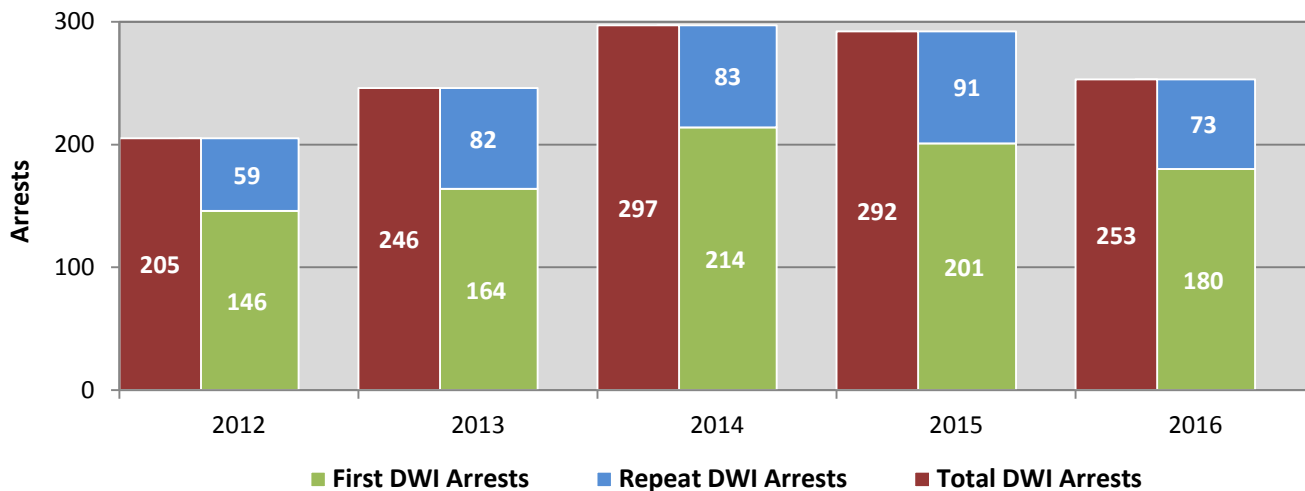
Age Groups	Pedestrians and Pedalcyclists <sup>1</sup> in Crashes					5-Year Total People
	2012	2013	2014	2015	2016	
0-4	0	1	0	0	1	2
5-9	2	1	1	1	1	6
10-14	2	1	1	0	0	4
15-19	2	2	1	0	3	8
20-24	1	1	1	1	3	7
25-29	2	4	0	0	1	7
30-34	1	0	1	0	0	2
35-39	1	1	1	0	0	3
40-44	2	0	0	0	1	3
45-49	1	0	4	1	1	7
50-54	1	0	0	1	0	2
55-59	0	0	2	1	1	4
60-64	0	0	4	0	0	4
65-69	1	2	1	0	0	4
70 +	0	0	0	1	0	1
Missing Data	1	3	1	0	0	5
<b>Total People</b>	<b>17</b>	<b>16</b>	<b>18</b>	<b>6</b>	<b>12</b>	<b>69</b>

**Table 19: Pedestrians and Pedalcyclists in Crashes by Alcohol Involvement  
and Severity of Injuries in Hobbs, 2016**

Alcohol Involvement	Pedestrians and Pedalcyclists <sup>1</sup> in Crashes					Total People
	Fatalities (Class K)	Suspected Serious Injuries (Class A)	Suspected Minor Injuries (Class B)	Possible Injuries (Class C)	No Apparent Injury (Class O)	
<b>Total Pedalcyclists</b>	<b>0</b>	<b>1</b>	<b>2</b>	<b>1</b>	<b>1</b>	<b>5</b>
Involved	0	0	0	0	0	0
Not Involved	0	1	2	1	1	5
<b>Total Pedestrians</b>	<b>0</b>	<b>1</b>	<b>2</b>	<b>4</b>	<b>0</b>	<b>7</b>
Involved	0	0	0	0	0	0
Not Involved	0	1	2	4	0	7
<b>Total People</b>	<b>0</b>	<b>2</b>	<b>4</b>	<b>5</b>	<b>1</b>	<b>12</b>

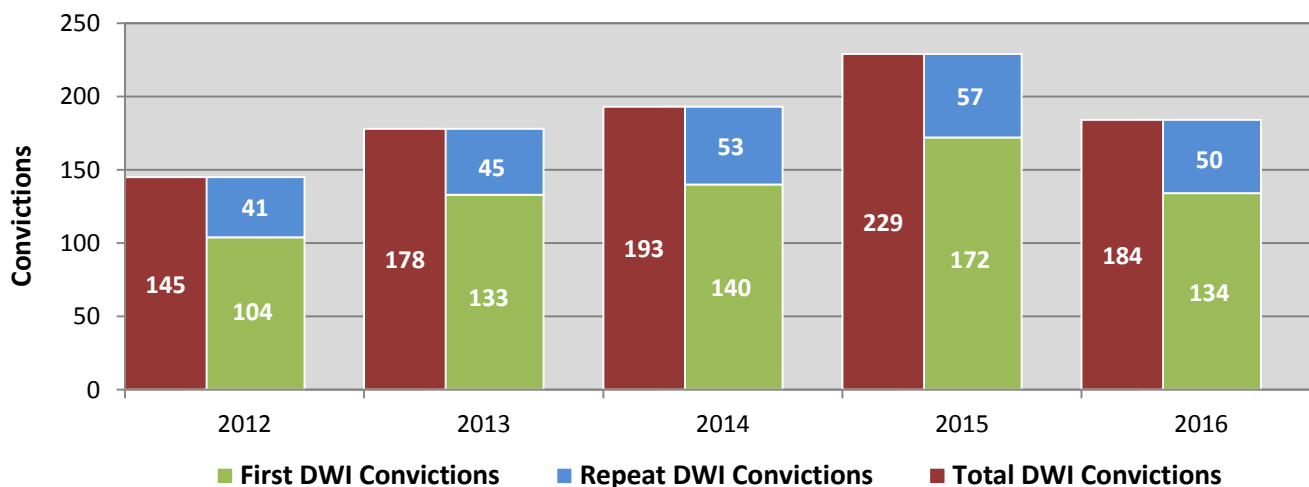
<sup>1</sup> Pedestrians and pedalcyclists are counted as non-motorized vehicles, when involved in a crash with a motor vehicle.

**Figure 11: DWI Arrests of Hobbs Residents Throughout the State, Showing First and Repeat DWI Arrests, 2012-2016**



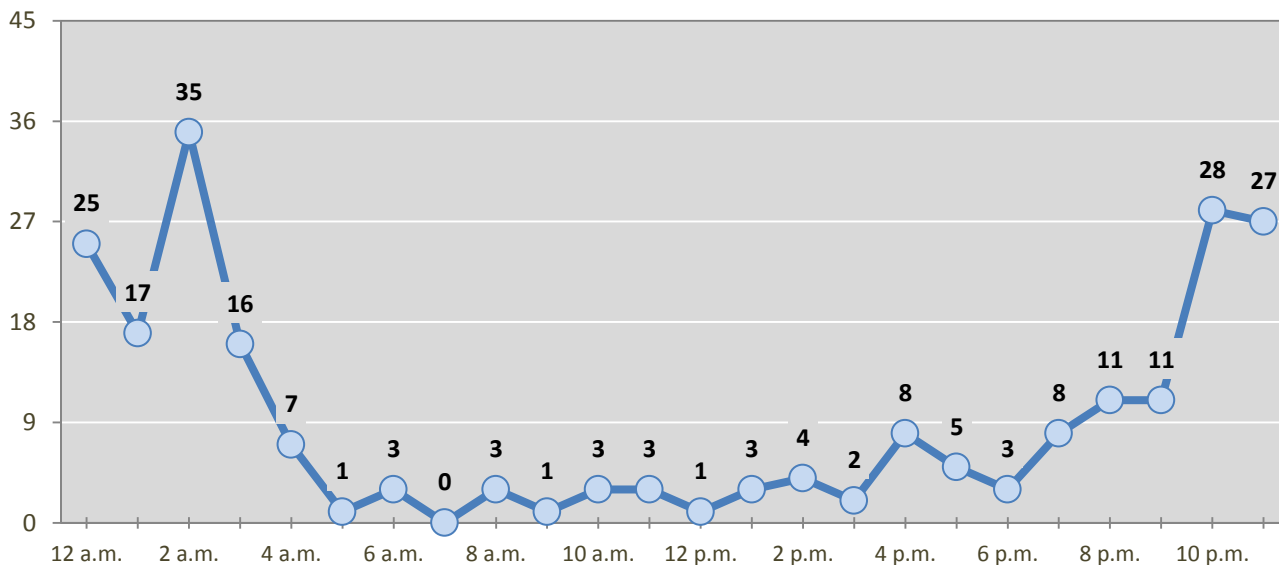
\*Values are based upon the year of the arrest.

**Figure 12: DWI Convictions of Hobbs Residents Throughout the State, Showing First and Repeat DWI Convictions, 2012-2016**



\*Values are based upon the year of the conviction.

**Figure 13: DWI Arrests by Hour of Hobbs Residents Throughout the State, 2016**



\* In 2016, Hobbs had 28 arrests for which hour data were missing.

**Table 20: DWI Arrests by Day of Week of Hobbs Residents Throughout the State, 2012-2016**

Day of Week	Year					5-Year Average
	2012	2013	2014	2015	2016	
Sunday	55	62	84	74	61	67
Monday	18	25	15	30	25	23
Tuesday	8	13	24	23	21	18
Wednesday	9	24	20	27	23	21
Thursday	36	28	32	30	32	32
Friday	37	31	55	39	40	40
Saturday	42	63	67	69	51	58
<b>Total Arrests</b>	<b>205</b>	<b>246</b>	<b>297</b>	<b>292</b>	<b>253</b>	<b>259</b>

**Table 21: Driver First DWI Arrests by Age Group  
of Hobbs Residents Throughout the State, 2012-2016**

Age Groups	Driver First DWI Arrests <sup>1</sup>				
	2012	2013	2014	2015	2016
15-19	17	22	15	11	14
20-24	32	44	56	63	38
25-29	25	26	48	30	38
30-34	17	20	25	25	27
35-39	18	16	19	19	20
40-44	13	15	12	15	19
45-49	5	8	15	10	9
50-54	10	8	12	11	3
55-59	2	3	6	4	1
60-64	3	0	2	4	1
65-69	2	0	1	1	1
70 +	0	0	0	1	2
Missing Data	2	2	3	7	7
<b>Total Drivers</b>	<b>146</b>	<b>164</b>	<b>214</b>	<b>201</b>	<b>180</b>

<sup>1</sup> Values are based upon the year of the arrest.

**Table 22: Driver Repeat DWI Arrests by Age Group  
of Hobbs Residents Throughout the State, 2012-2016**

Age Groups	Driver Repeat DWI Arrests <sup>1</sup>				
	2012	2013	2014	2015	2016
15-19	0	0	1	1	0
20-24	6	9	8	13	8
25-29	7	21	19	18	8
30-34	9	15	11	10	13
35-39	9	8	15	13	6
40-44	4	6	11	5	10
45-49	9	8	8	11	5
50-54	8	9	7	6	10
55-59	6	4	2	6	8
60-64	1	2	1	6	5
65-69	0	0	0	1	0
70 +	0	0	0	1	0
Missing Data	0	0	0	0	0
<b>Total Drivers</b>	<b>59</b>	<b>82</b>	<b>83</b>	<b>91</b>	<b>73</b>

<sup>1</sup> Values are based upon the year of the arrest.

**Table 23: Driver First DWI Convictions by Age Group of Hobbs Residents Throughout the State, 2012-2016**

Age Groups	Driver First DWI Convictions <sup>1</sup>				
	2012	2013	2014	2015	2016
15-19	13	13	13	13	5
20-24	31	35	41	56	30
25-29	17	24	34	25	26
30-34	10	16	13	22	21
35-39	12	13	9	14	16
40-44	4	13	8	12	10
45-49	3	7	8	9	8
50-54	7	8	10	8	5
55-59	2	2	1	5	2
60-64	3	0	1	3	2
65-69	1	1	1	0	2
70 +	0	0	0	0	1
Missing Data	1	1	1	5	6
<b>Total Drivers</b>	<b>104</b>	<b>133</b>	<b>140</b>	<b>172</b>	<b>134</b>

<sup>1</sup> Values are based upon the year of the conviction.

**Table 24: Driver Repeat DWI Convictions by Age Group of Hobbs Residents Throughout the State, 2012-2016**

Age Groups	Driver Repeat DWI Convictions <sup>1</sup>				
	2012	2013	2014	2015	2016
15-19	0	0	0	1	0
20-24	6	1	8	7	5
25-29	5	7	6	11	10
30-34	5	9	7	10	6
35-39	5	6	8	8	6
40-44	3	7	6	6	4
45-49	6	5	5	4	3
50-54	8	4	8	3	6
55-59	1	5	4	3	5
60-64	2	1	1	4	4
65-69	0	0	0	0	1
70 +	0	0	0	0	0
Missing Data	0	0	0	0	0
<b>Total Drivers</b>	<b>41</b>	<b>45</b>	<b>53</b>	<b>57</b>	<b>50</b>

<sup>1</sup> Values are based upon the year of the conviction.

**Table 25: Court Disposition of DWI Arrests for the State  
and of Hobbs Residents Throughout the State, 2016**

Court Disposition of DWI Arrest <sup>1</sup>	Hobbs	Statewide	Percent of Statewide
Total DWI Arrests	253	10,344	<b>2.4%</b>
DWI Arrests Resulting in Convictions	146	5,541	<b>2.6%</b>
DWI Arrests Resulting in Dismissals <sup>2</sup>	8	1,512	<b>0.5%</b>
DWI Arrests Awaiting Disposition	99	3,291	<b>3.0%</b>

<sup>1</sup> These are the number of DWI arrests in 2016 and whether the case resulted in a conviction or dismissal, or is still awaiting court disposition, as reported in the NM MVD Citation Tracking System (CTS) as of December 2017.

<sup>2</sup> For this table, a very small number of "not guilty" rulings may be included in the category Dismissals.

**Table 26: Average Number of Days from Date of DWI Arrest to Date of Court Disposition  
for the State and of Hobbs Residents Throughout the State, 2016**

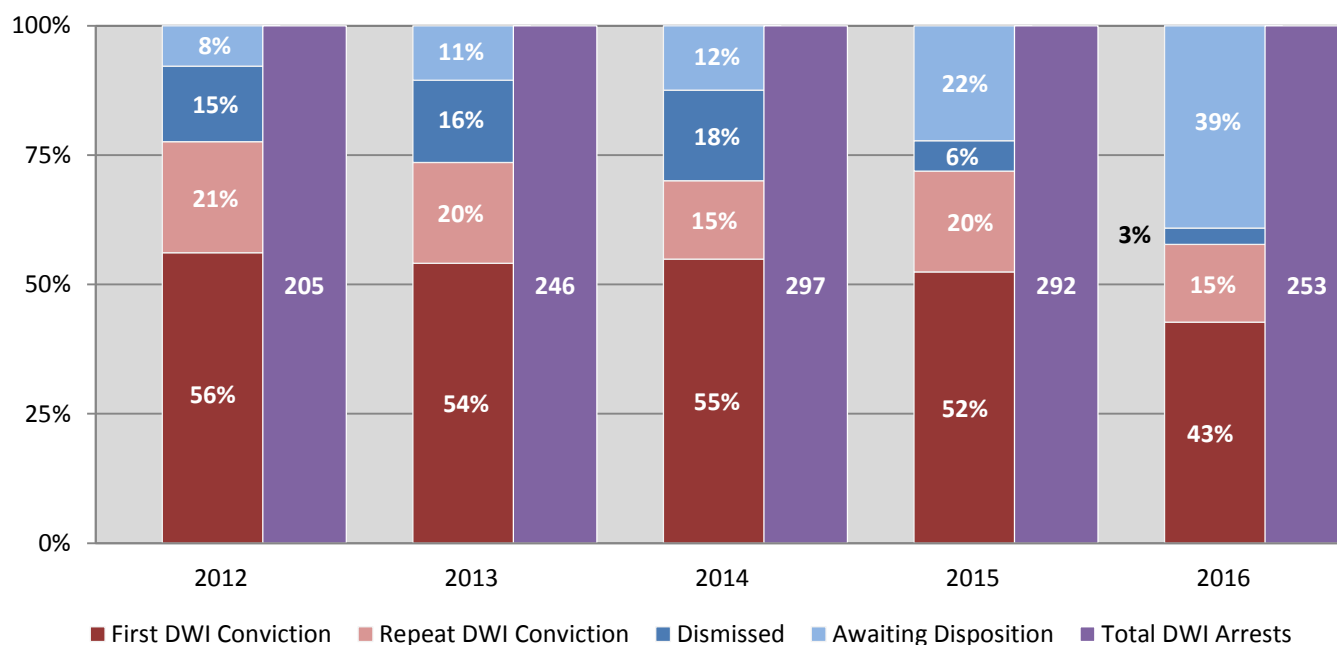
Court Disposition	Average Number of Days		Deviation from Statewide Average
	Hobbs	Statewide	
DWI Conviction	99	157	<b>-58</b>
DWI Dismissal	214	179	<b>35</b>

**Table 27: Court Disposition of DWI Arrests of Hobbs Residents Throughout the State, 2012-2016**

Year of DWI Arrest <sup>1</sup>	Court Disposition				Total DWI Arrests
	First DWI Conviction	Repeat DWI Conviction	Dismissed	Awaiting Disposition	
2012	115	44	30	16	205
2013	133	48	39	26	246
2014	163	45	52	37	297
2015	153	57	17	65	292
2016	108	38	8	99	253

<sup>1</sup> Values are based upon the year of the arrest.

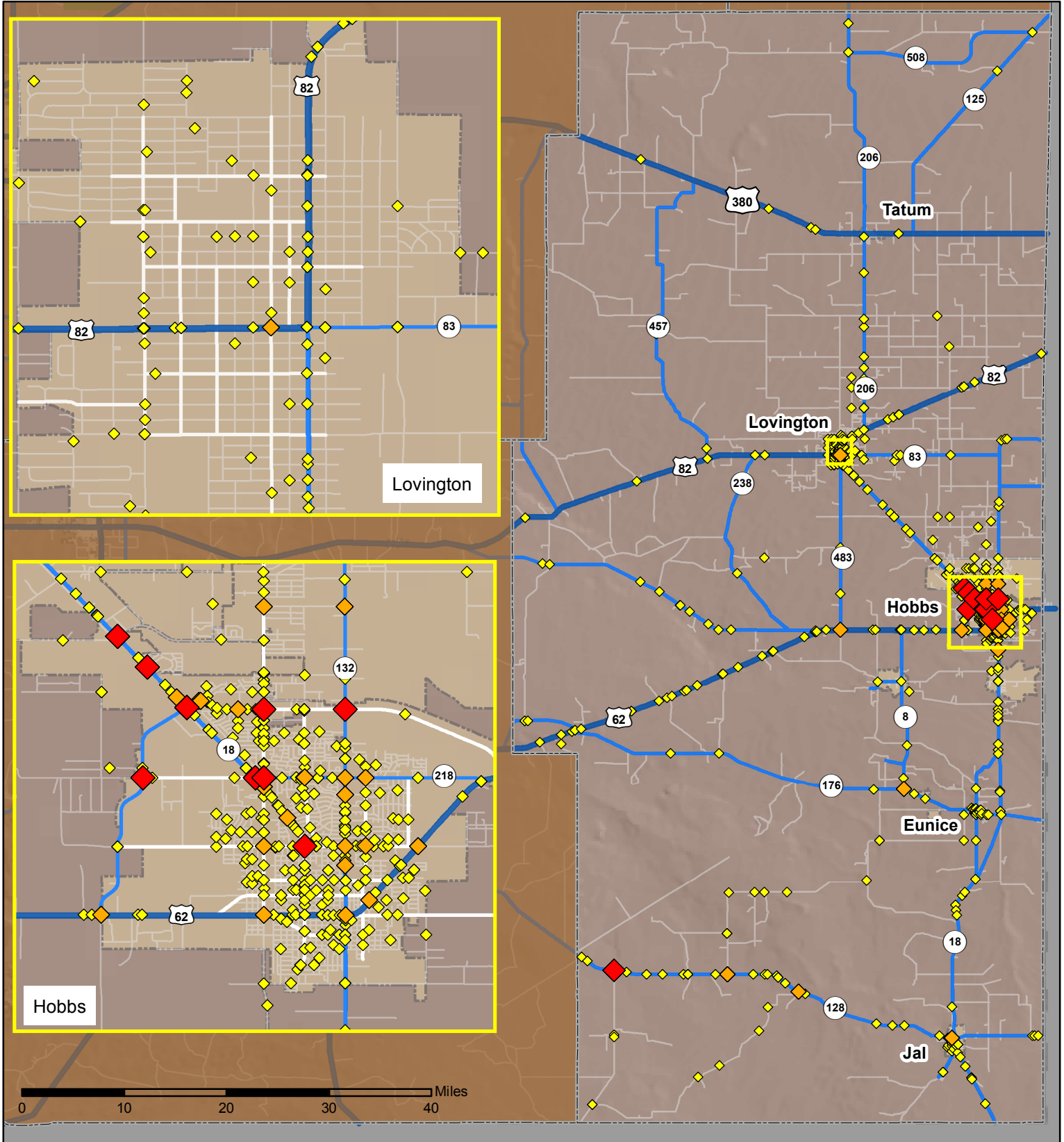
**Figure 14: Court Dispositions by Percentage of DWI Arrests of Hobbs Residents Throughout the State, 2012-2016**



\*Table 27 contains the values used to calculate percentages shown in Figure 14.

# Crashes in Lea County, New Mexico, 2016

Map created by the Traffic Research Unit, Geospatial & Population Studies at UNM



## Legend



- Forest & Wildlife Areas
- Reservations & Pueblos
- County Boundaries
- City Boundaries
- Interstate Highways
- U.S. Highways
- State Highways
- Streets & Roadways

## Crashes 2016

- 1 - 3 Crashes
- 4 - 6 Crashes
- 7 - 17 Crashes

Data Source: NMDOT Crash File 2016  
<http://tru.unm.edu> CO#5801 tru@unm.edu