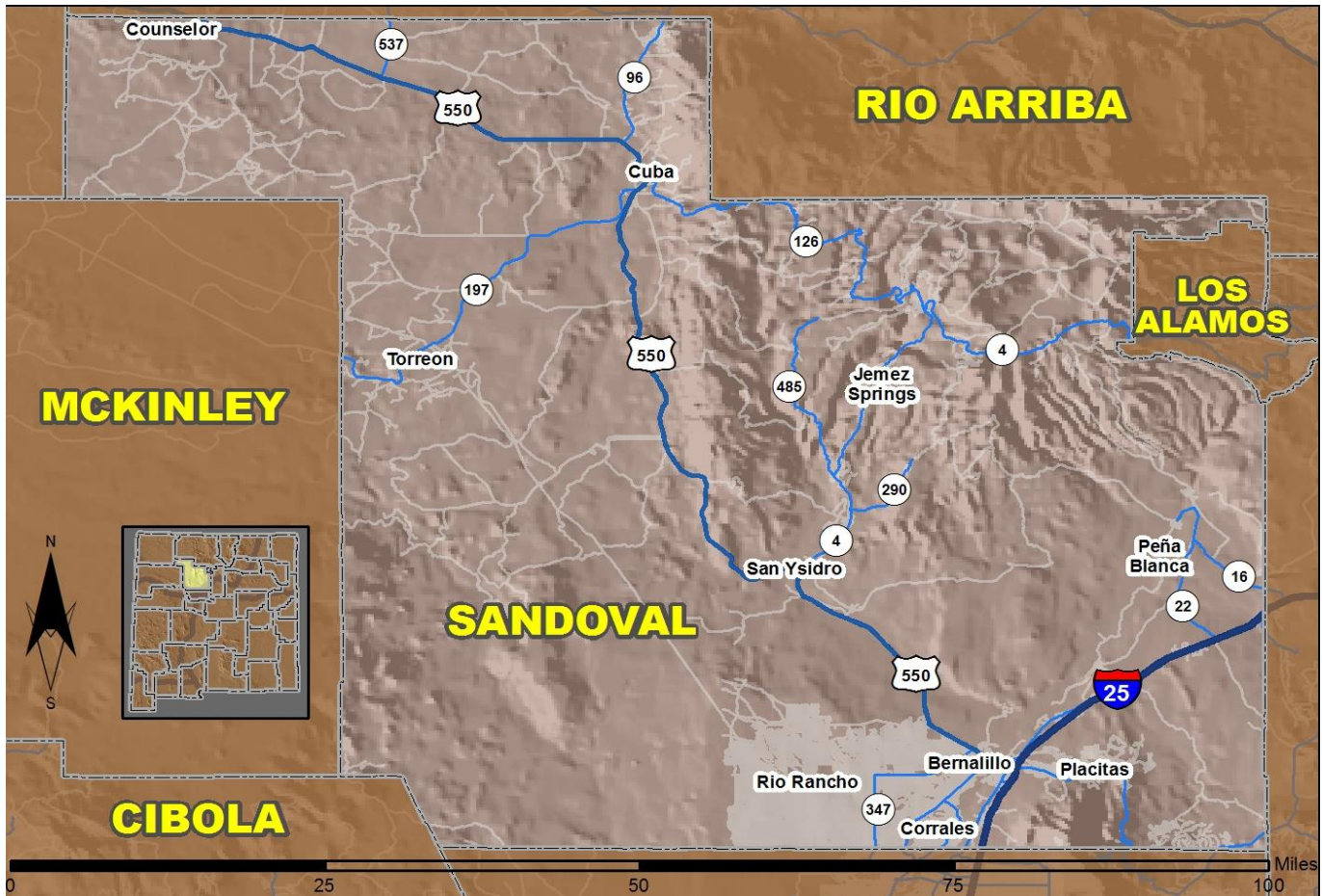


# 2016 Community Report

## Rio Rancho



Produced for the New Mexico Department of Transportation,  
Traffic Safety Division, Traffic Records Bureau,  
Under Contract 5801 by the University of New Mexico,  
Geospatial and Population Studies, Traffic Research Unit

Distributed in compliance with New Mexico Statute 66-7-214  
as a reference source regarding New Mexico traffic crashes

For the purposes of this report, data are compiled by the University of New Mexico, Geospatial and Population Studies, Traffic Research Unit (TRU), on behalf of the New Mexico Department of Transportation (NMDOT). Data in this report may differ from that in other data sources, such as the Federal Fatality Analysis Reporting System (FARS), due to the timing of publications and rules for how data are compiled and maintained in Federal vs. State databases. If you have questions regarding this report, please contact the Traffic Safety Division at 505-827-0427.

<http://tru.unm.edu/Crash-Reports/Community-Reports/>

## Definitions

---

**Aggravated DWI** – A driver arrested for 1) driving with a BAC of 0.16 or higher, 2) driving under the influence of alcohol or drugs and causing bodily injury to a human being as a result, or 3) driving under the influence of alcohol or drugs and refusing to submit to a BAC test at the time of arrest for DWI.

**Alcohol-involved Crash** – A crash for which the Uniform Crash Report indicated that 1) a DWI citation was issued, 2) alcohol was a contributing factor, or 3) a person in control of a vehicle (including a pedestrian or pedalcyclist) was suspected of being under the influence of alcohol.

**Alcohol-involved Driver** – A person in control of a vehicle who was cited for DWI or indicated on the Uniform Crash Report as being either suspected or determined by testing to be under the influence of alcohol. There can be multiple alcohol-involved drivers in a single alcohol-involved crash.

**Crash** – A reported incident on a public roadway involving one or more motor vehicles that resulted in death, personal injury, or at least \$500 in property damage. Crashes on private property (such as a parking lot) are not included.

**DWI Arrest (Citation)** – In this report, a DWI arrest (a.k.a. a DWI citation) is a driver arrested for either DWI or aggravated DWI. New Mexico’s legal limit for presumption of driving while intoxicated (DWI) is 0.08 for non-commercial drivers older than 21 years of age, 0.04 for commercial vehicle drivers, and 0.02 for drivers younger than 21 years of age.

**DWI Conviction** – A driver convicted of driving under the intoxicating influence of alcohol, narcotics, or pathogenic drugs, including aggravated DWI.

**Fatal Crash** – A crash in which at least one person was killed. More than one person can be killed in a single fatal crash.

**Fatalities** – The number of people killed in a crash. The terms “killed” and “deaths” are synonymous with “fatalities.” A fatality is crash-related if it occurs at the time of the crash or if the person(s) involved in the crash dies within 30 days.

**Injury Crash** – A reported crash in which at least one person was injured. Injury crashes involve at least one suspected serious injury (Class A), suspected minor injury (Class B), or possible injury (Class C). Fatal crashes are not included.

**Missing Data** – An indication that the applicable field on the UCR form was left blank or contained an invalid code. Starting with crashes that occurred in 2012, improvements in the identification of missing data in the NMDOT crash database led to an increase in the reported amount of missing data.

**Pedalcyclist** – A person riding a mechanism of transport that is powered solely by pedals (a.k.a. bicyclist).

**Pedestrian** – A person on foot, walking, running, jogging, hiking, sitting or lying down who is involved in a motor vehicle traffic crash.

## Sources

---

**Crash Data** – New Mexico Department of Transportation, Traffic Safety Division, Traffic Records Bureau, Traffic Crash Database, as of the report date below. Crash data are compiled using NMDOT Uniform Crash Reports (UCR), submitted by law enforcement agencies in the state, for any incident on a public roadway involving one or more motor vehicles that resulted in death, injury, or at least \$500 in property damage. These reports are processed by the NMDOT Traffic Records Bureau and analyzed by the University of New Mexico, Geospatial and Population Studies, Traffic Research Unit (TRU).

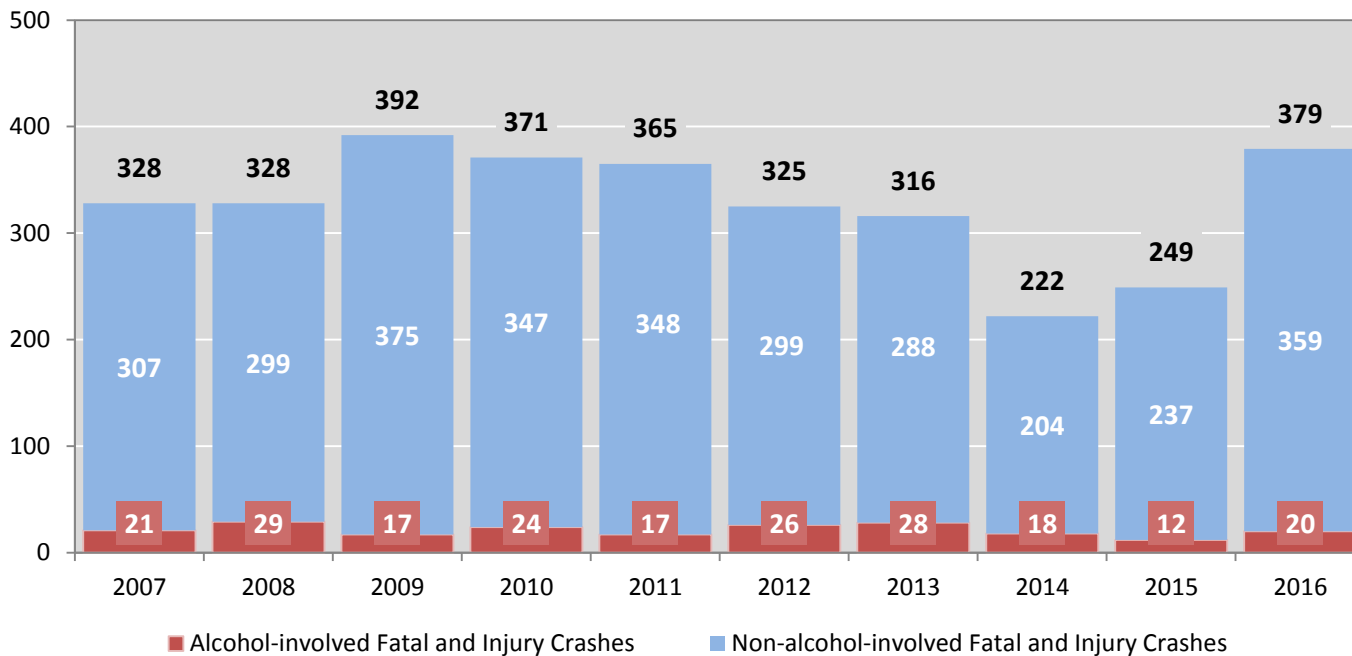
**DWI Citation Tracking System (CTS)** – New Mexico Taxation and Revenue Department (NM TRD), Motor Vehicle Division (MVD), DWI Citation Tracking System (CTS), as of December 2017. Repeat offenders are identified by the combination of account key, arrest date, and citation number. County data are based upon the county where the arrest took place. City data are based upon the city where the offender resides.

**Urban Areas** – New Mexico Department of Transportation, Asset Management and Planning, 2010 U.S. Census Urbanized Area Boundaries, NMDOT-Adjusted, and U.S. Census Urban Clusters, August 21, 2013. In crashes before 2013, “urban” was defined as a town or city with a population of at least 2,500 people.

**Table 1: Total Crashes and Alcohol-involved Crashes by  
Crash Severity in Rio Rancho, 2007-2016**

Year	Total Crashes				Alcohol-involved Crashes			
	Fatal	Injury	Property Damage Only	Total	Fatal	Injury	Property Damage Only	Total
2007	1	327	881	<b>1,209</b>	0	21	31	<b>52</b>
2008	4	324	736	<b>1,064</b>	1	28	40	<b>69</b>
2009	6	386	859	<b>1,251</b>	3	14	44	<b>61</b>
2010	4	367	805	<b>1,176</b>	2	22	31	<b>55</b>
2011	3	362	831	<b>1,196</b>	2	15	40	<b>57</b>
2012	3	322	804	<b>1,129</b>	2	24	40	<b>66</b>
2013	3	313	735	<b>1,051</b>	1	27	34	<b>62</b>
2014	2	220	530	<b>752</b>	0	18	21	<b>39</b>
2015	0	249	608	<b>857</b>	0	12	29	<b>41</b>
2016	0	379	831	<b>1,210</b>	0	20	37	<b>57</b>

**Figure 1: Alcohol-involved Fatal and Injury Crashes Compared with  
Non-alcohol-involved Fatal and Injury Crashes in Rio Rancho, 2007-2016**



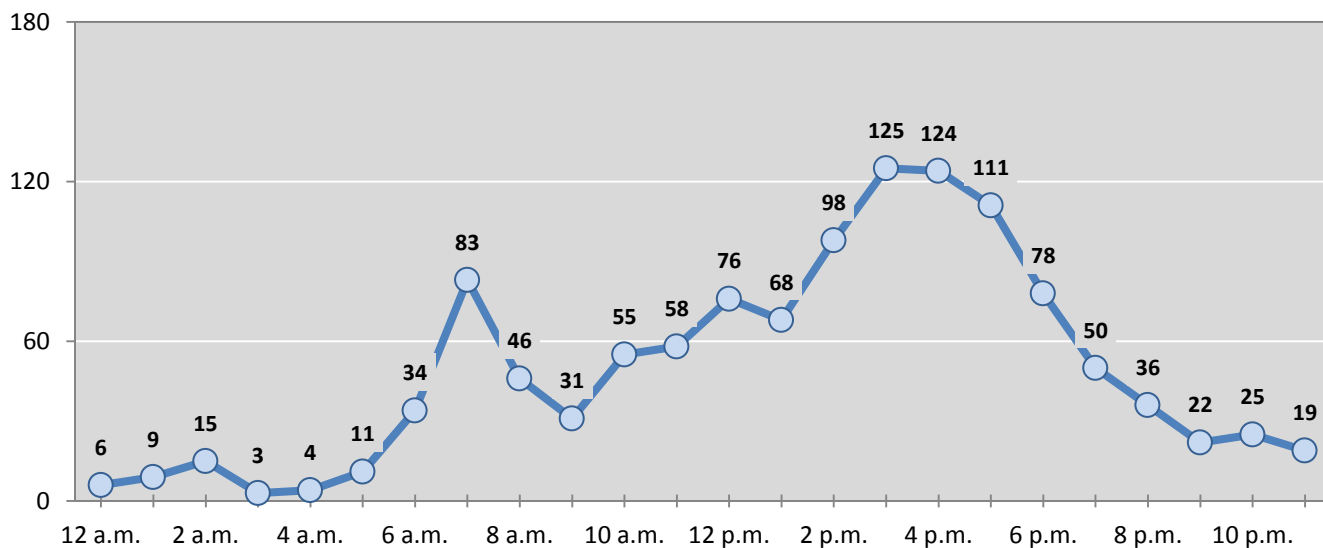
**Table 2: Crashes by Month in Rio Rancho, 2012-2016**

Month	Crashes					5-Year Average
	2012	2013	2014	2015	2016	
January	91	78	70	77	79	<b>79</b>
February	75	84	88	56	85	<b>78</b>
March	67	81	106	9	92	<b>71</b>
April	106	77	39	53	101	<b>75</b>
May	111	103	62	60	99	<b>87</b>
June	98	87	11	86	80	<b>72</b>
July	88	64	13	64	99	<b>66</b>
August	98	114	30	90	99	<b>86</b>
September	94	81	91	109	107	<b>96</b>
October	104	93	62	76	127	<b>92</b>
November	106	107	95	57	112	<b>95</b>
December	91	82	85	120	130	<b>102</b>
<b>Total Crashes</b>	<b>1,129</b>	<b>1,051</b>	<b>752</b>	<b>857</b>	<b>1,210</b>	<b>1,000</b>

**Table 3: Alcohol-involved Crashes by Month in Rio Rancho, 2012-2016**

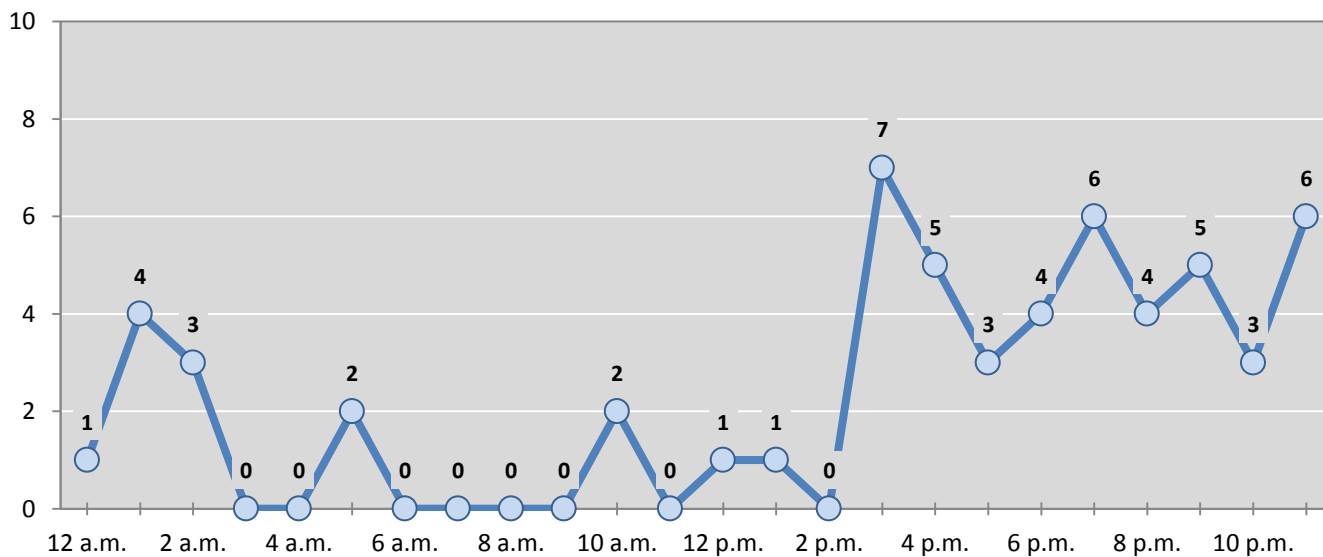
Month	Alcohol-involved Crashes					5-Year Average
	2012	2013	2014	2015	2016	
January	3	5	5	4	4	<b>4</b>
February	4	5	5	3	2	<b>4</b>
March	3	9	9	0	4	<b>5</b>
April	4	4	1	4	5	<b>4</b>
May	5	6	3	2	3	<b>4</b>
June	8	4	0	1	6	<b>4</b>
July	4	5	0	3	5	<b>3</b>
August	5	5	3	6	4	<b>5</b>
September	6	1	5	6	4	<b>4</b>
October	8	2	1	4	6	<b>4</b>
November	8	9	5	3	4	<b>6</b>
December	8	7	2	5	10	<b>6</b>
<b>Total Crashes</b>	<b>66</b>	<b>62</b>	<b>39</b>	<b>41</b>	<b>57</b>	<b>53</b>

**Figure 2: Crashes by Hour in Rio Rancho, 2016**



\* In 2016, Rio Rancho had 23 crashes for which hour data were missing.

**Figure 3: Alcohol-involved Crashes by Hour in Rio Rancho, 2016**



\* In 2016, Rio Rancho had 0 alcohol-involved crashes for which hour data were missing.

**Table 4: Alcohol-involved Crashes by Day of Week in Rio Rancho, 2012-2016**

Day of Week	Alcohol-involved Crashes					5-Year Average
	2012	2013	2014	2015	2016	
Sunday	9	13	10	4	9	9
Monday	7	8	3	4	6	6
Tuesday	6	4	3	4	8	5
Wednesday	14	3	3	6	6	6
Thursday	6	10	2	4	2	5
Friday	10	14	8	11	15	12
Saturday	14	10	10	8	11	11
<b>Total Crashes</b>	<b>66</b>	<b>62</b>	<b>39</b>	<b>41</b>	<b>57</b>	<b>53</b>

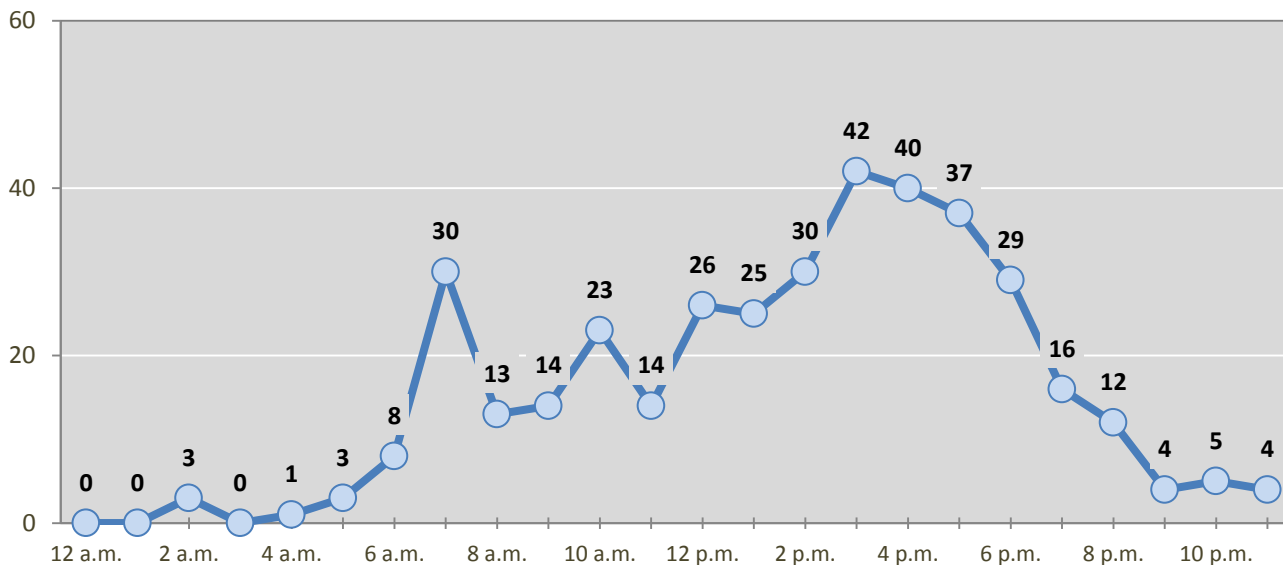
**Table 5: Fatal and Injury Crashes by Day of Week in Rio Rancho, 2012-2016**

Day of Week	Fatal and Injury Crashes					5-Year Average
	2012	2013	2014	2015	2016	
Sunday	36	39	20	25	36	31
Monday	44	41	38	33	63	44
Tuesday	56	39	41	41	54	46
Wednesday	47	59	39	36	55	47
Thursday	57	47	28	36	59	45
Friday	36	59	27	37	63	44
Saturday	49	32	29	41	49	40
<b>Total Crashes</b>	<b>325</b>	<b>316</b>	<b>222</b>	<b>249</b>	<b>379</b>	<b>298</b>

**Table 6: Pedestrian and Pedalcyclist Crashes by Day of Week in Rio Rancho, 2012-2016**

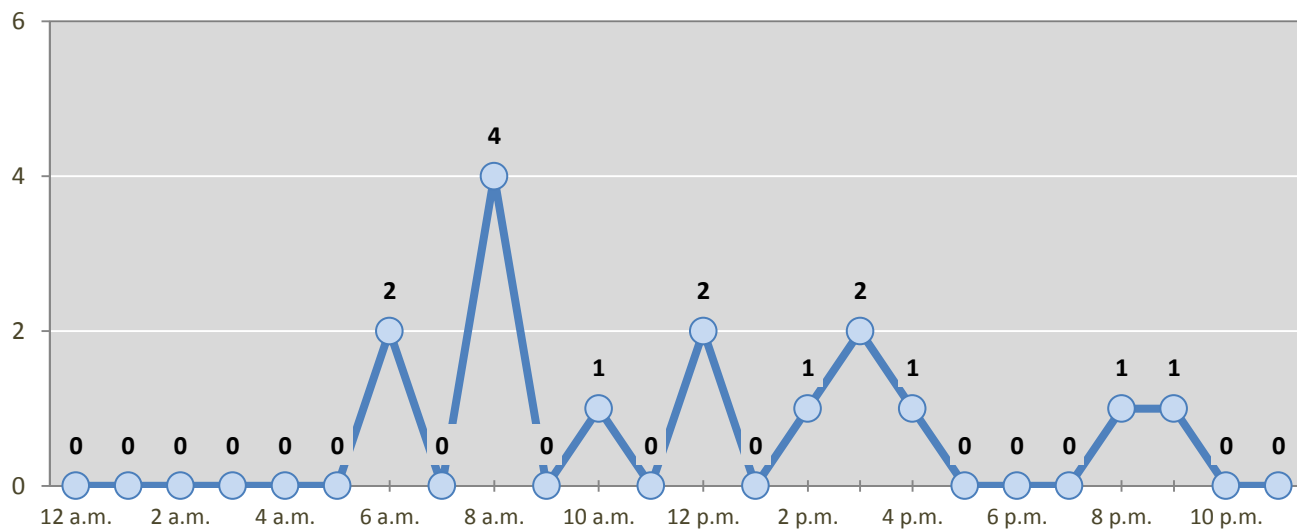
Day of Week	Pedestrian and Pedalcyclist Crashes					5-Year Average
	2012	2013	2014	2015	2016	
Sunday	3	0	0	0	1	1
Monday	3	1	2	1	3	2
Tuesday	4	1	1	2	1	2
Wednesday	2	2	3	2	3	2
Thursday	9	1	2	2	3	3
Friday	1	2	0	2	3	2
Saturday	2	1	1	1	1	1
<b>Total Crashes</b>	<b>24</b>	<b>8</b>	<b>9</b>	<b>10</b>	<b>15</b>	<b>13</b>

**Figure 4: Fatal and Injury Crashes by Hour in Rio Rancho, 2016**



\* In 2016, Rio Rancho had 0 crashes for which hour data were missing.

**Figure 5: Pedestrian and Pedalcyclist Crashes by Hour in Rio Rancho, 2016**



\* In 2016, Rio Rancho had 0 crashes for which hour data were missing.

**Table 7: Severity of Injuries to People in Crashes by Rural and Urban Location in Rio Rancho, 2016**

Urban and Rural Locations by Alcohol-involvement	People in Crashes by Severity of Injuries					Total People
	Fatalities (Class K)	Suspected Serious Injuries (Class A)	Suspected Minor Injuries (Class B)	Possible Injuries (Class C)	No Apparent Injuries (Class O)	
<b>People in Alcohol-involved Crashes</b>	<b>0</b>	<b>0</b>	<b>14</b>	<b>13</b>	<b>97</b>	<b>124</b>
Urban	0	0	14	13	97	124
Rural Non-Interstate	0	0	0	0	0	0
Rural Interstate	0	0	0	0	0	0
<b>People in Crashes</b>	<b>0</b>	<b>18</b>	<b>105</b>	<b>446</b>	<b>2,742</b>	<b>3,311</b>
Urban	0	18	105	446	2,742	3,311
Rural Non-Interstate	0	0	0	0	0	0
Rural Interstate	0	0	0	0	0	0
<b>Percent in Alcohol-involved Crashes</b>	<b>0%</b>	<b>0%</b>	<b>13%</b>	<b>3%</b>	<b>4%</b>	<b>4%</b>

**Table 8: Total Crashes by Roadway System and Crash Severity in Rio Rancho, 2012-2016**

Crash Severity by System	Crashes by Year					5-Year Average
	2012	2013	2014	2015	2016	
<b>Total Rural Interstate</b>	<b>0</b>	<b>0</b>	<b>0</b>	<b>0</b>	<b>0</b>	<b>0</b>
Fatal Crash	0	0	0	0	0	0
Injury Crash	0	0	0	0	0	0
Property Damage Only Crash	0	0	0	0	0	0
<b>Total Rural Non-Interstate</b>	<b>0</b>	<b>7</b>	<b>10</b>	<b>0</b>	<b>0</b>	<b>3</b>
Fatal Crash	0	0	0	0	0	0
Injury Crash	0	4	2	0	0	1
Property Damage Only Crash	0	3	8	0	0	2
<b>Total Urban</b>	<b>1,129</b>	<b>1,044</b>	<b>742</b>	<b>857</b>	<b>1,210</b>	<b>996</b>
Fatal Crash	3	3	2	0	0	2
Injury Crash	322	309	218	249	379	295
Property Damage Only Crash	804	732	522	608	831	699



**Table 9: Total Crashes by Crash Classification in Rio Rancho, 2012-2016**

Crash Classification	Total Crashes by Year					5-Year Average
	2012	2013	2014	2015	2016	
Animal	11	1	2	2	4	4
Fixed Object	124	114	84	91	107	104
Other (Non-Collision)	12	12	8	13	11	11
Other (Object)	24	16	11	16	10	15
Other Vehicle	803	767	559	639	961	746
Overturn/Rollover	46	42	26	16	29	32
Parked Vehicle	72	75	42	38	37	53
Pedalcyclist	17	4	5	6	9	8
Pedestrian	6	4	4	4	6	5
Railroad Train	0	0	0	0	0	0
Rollover	0	0	0	10	4	3
Vehicle on Other Road	5	3	2	1	5	3
Missing Data	9	13	9	21	27	16
<b>Total Crashes</b>	<b>1,129</b>	<b>1,051</b>	<b>752</b>	<b>857</b>	<b>1,210</b>	<b>1,000</b>

**Table 10: Vehicles in Crashes by Vehicle Type in Rio Rancho, 2012-2016**

Vehicle Type <sup>1</sup>	Vehicles in Crashes by Vehicle Type					5-Year Average
	2012	2013	2014	2015	2016	
Bus	8	5	4	1	13	6
Motorcycle	30	44	24	31	31	32
Passenger	1,020	1,008	746	879	1,316	994
Pedalcyclist	19	4	5	6	9	9
Pedestrian	6	4	4	4	6	5
Pickup	309	310	245	267	365	299
Semi	21	26	19	18	31	23
Van/SUV/4WD	477	419	301	344	569	422
Other Vehicle	42	68	11	16	3	28
Missing Data	187	119	82	101	78	113
<b>Total Vehicles</b>	<b>2,119</b>	<b>2,007</b>	<b>1,441</b>	<b>1,667</b>	<b>2,421</b>	<b>1,931</b>

<sup>1</sup> Pedestrians and pedalcyclists are counted as non-motorized vehicles, when involved in a crash with a motor vehicle. See Page 17 for data on drivers of non-motorized vehicles in crashes (i.e. pedestrians and pedalcyclists).

**Table 11: Motor Vehicle Drivers in Crashes by Vehicle Type and Age Group in Rio Rancho, 2016**

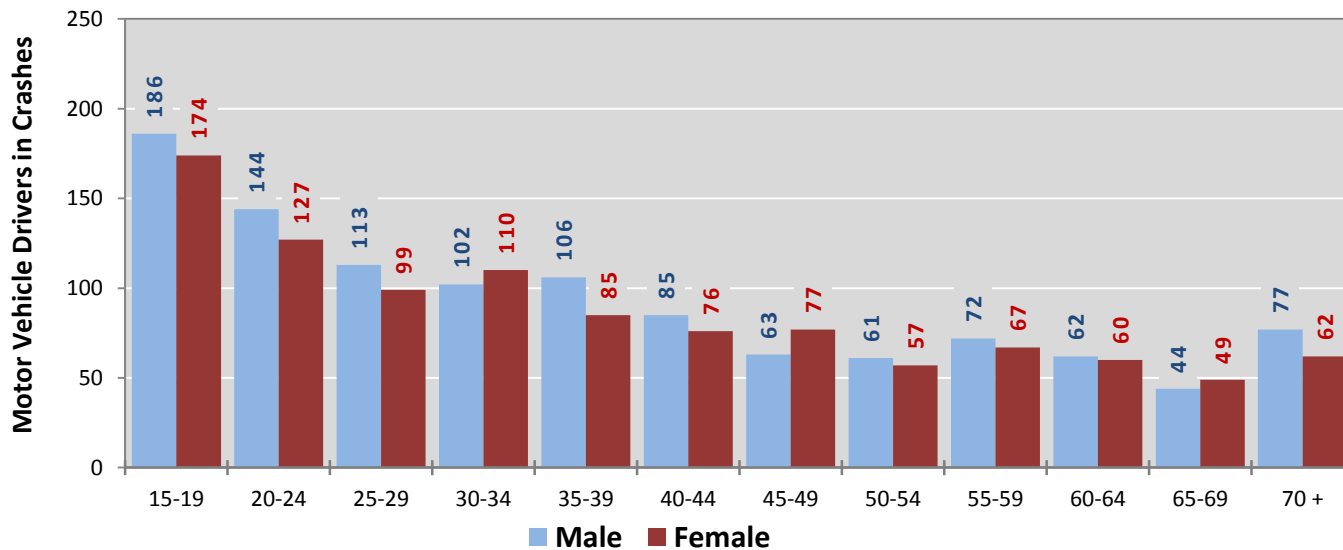
Age Groups	Motor Vehicle <sup>1</sup> Drivers by Vehicle Type and Age Group								Total Drivers
	Bus	Motor-cycle	Passenger	Pickup	Semi	Van 4WD SUV	Other Vehicle	Missing Data	
15-19	0	6	235	46	0	72	0	5	<b>364</b>
20-24	0	2	208	23	5	36	0	1	<b>275</b>
25-29	0	1	125	33	1	46	2	4	<b>212</b>
30-34	0	4	120	35	1	51	0	1	<b>212</b>
35-39	0	2	78	38	4	70	0	1	<b>193</b>
40-44	2	2	71	37	2	47	1	0	<b>162</b>
45-49	2	2	68	14	5	47	0	2	<b>140</b>
50-54	1	3	60	20	0	34	0	0	<b>118</b>
55-59	3	4	71	25	3	31	0	3	<b>140</b>
60-64	3	3	57	21	6	31	0	1	<b>122</b>
65-69	2	0	51	15	1	26	0	0	<b>95</b>
70 +	0	0	81	18	0	40	0	1	<b>140</b>
Missing Data	0	2	91	40	3	38	0	59	<b>233</b>
<b>Total Drivers</b>	<b>13</b>	<b>31</b>	<b>1,316</b>	<b>365</b>	<b>31</b>	<b>569</b>	<b>3</b>	<b>78</b>	<b>2,406</b>

**Table 12: Alcohol-involved Motor Vehicle Drivers in Crashes by Vehicle Type and Age Group in Rio Rancho, 2016**

Age Groups	Alcohol-involved Motor Vehicle <sup>1</sup> Drivers by Vehicle Type and Age Group								Total Drivers
	Bus	Motor-cycle	Passenger	Pickup	Semi	Van 4WD SUV	Other Vehicle	Missing Data	
15-19	0	0	2	1	0	0	0	0	<b>3</b>
20-24	0	0	8	1	1	1	0	0	<b>11</b>
25-29	0	0	6	5	0	1	0	0	<b>12</b>
30-34	0	0	4	1	0	1	0	0	<b>6</b>
35-39	0	0	3	2	1	3	0	0	<b>9</b>
40-44	0	1	1	1	0	2	0	0	<b>5</b>
45-49	0	0	1	0	0	3	0	0	<b>4</b>
50-54	0	0	0	0	0	0	0	0	<b>0</b>
55-59	0	0	2	0	0	0	0	0	<b>2</b>
60-64	0	0	1	0	0	0	0	0	<b>1</b>
65-69	0	0	0	0	0	0	0	0	<b>0</b>
70 +	0	0	0	1	0	0	0	0	<b>1</b>
Missing Data	0	0	2	1	0	0	0	0	<b>3</b>
<b>Total Drivers</b>	<b>0</b>	<b>1</b>	<b>30</b>	<b>13</b>	<b>2</b>	<b>11</b>	<b>0</b>	<b>0</b>	<b>57</b>

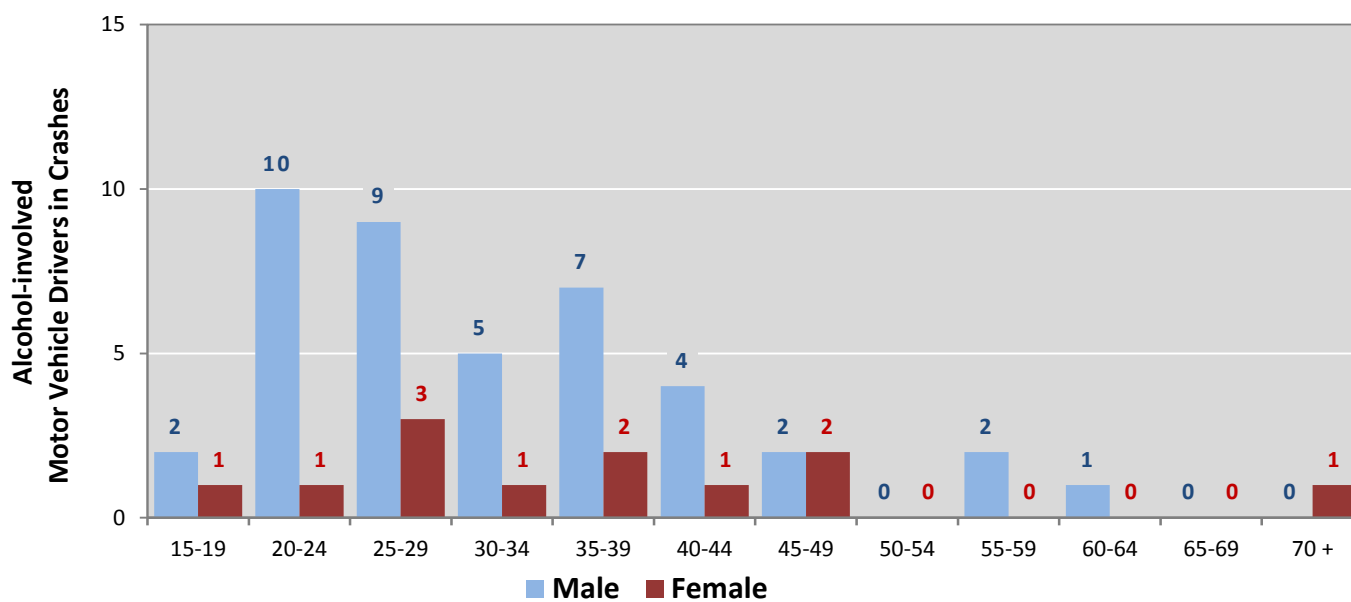
<sup>1</sup> See Page 17 for data on drivers of non-motorized vehicles in crashes (i.e. pedestrians and pedalcyclists).

**Figure 6: Motor Vehicle Drivers in Crashes by Age Group and Sex in Rio Rancho, 2016**



\* In 2016, Rio Rancho had 248 drivers in crashes for which age or sex data were missing.

**Figure 7: Alcohol-involved Motor Vehicle Drivers in Crashes by Age Group and Sex in Rio Rancho, 2016**



\* In 2016, Rio Rancho had 3 drivers in crashes for which age or sex data were missing.

**Table 13: Alcohol-involved Motor Vehicle Drivers Under 21  
(Ages 15-20) in Crashes in Rio Rancho, 2012-2016**

Age <sup>1</sup>	Year					5-Year Total
	2012	2013	2014	2015	2016	
15	0	1	0	0	0	1
16	0	1	0	1	0	2
17	1	0	0	1	1	3
18	4	2	3	0	0	9
19	4	0	1	1	2	8
20	3	3	3	0	2	11
<b>Total Drivers</b>	<b>12</b>	<b>7</b>	<b>7</b>	<b>3</b>	<b>5</b>	<b>34</b>

**Table 14: Motor Vehicle Drivers Under 21 (Ages 15-20) in Crashes  
by Age, Sex and Alcohol-involvement in Rio Rancho, 2016**

Age <sup>1</sup>	Total Drivers				Alcohol-involved Drivers			
	Sex		Total Drivers	Percent of Total	Sex		Total Drivers	Percent of Total
	Male	Female			Male	Female		
15	8	8	16	4%	0	0	0	0%
16	46	36	82	19%	0	0	0	0%
17	50	53	103	24%	1	0	1	20%
18	49	39	88	20%	0	0	0	0%
19	33	38	71	17%	1	1	2	40%
20	35	35	70	16%	1	1	2	40%
<b>Total Drivers</b>	<b>221</b>	<b>209</b>	<b>430</b>	<b>100%</b>	<b>3</b>	<b>2</b>	<b>5</b>	<b>100%</b>

<sup>1</sup> For analysis of drivers under age 21, when the driver age or sex are not identified on the crash report (typically hit-and-run drivers), the driver data are considered unreliable and are excluded from the analysis.

**Table 15: Frequency of Contributing Factors in Crashes  
by Crash Severity in Rio Rancho, 2016**

Contributing Factors	Frequency of Contributing Factor <sup>1</sup> by Crash Severity			
	Frequency in Fatal Crashes	Frequency in Injury Crashes	Frequency in Property Damage Only Crashes	Frequency in All Crashes
<b>Human</b>	<b>0</b>	<b>577</b>	<b>1,175</b>	<b>1,752</b>
Driver Inattention	0	182	365	547
Following Too Closely	0	109	203	312
Failed to Yield Right of Way	0	89	143	232
Other Improper Driving	0	23	65	88
Excessive Speed	0	32	50	82
Made Improper Turn	0	10	51	61
Alcohol Involved	0	20	38	58
Disregarded Traffic Signal	0	31	24	55
Improper Lane Change	0	7	46	53
Avoid No Contact - Vehicle	0	13	34	47
Speed Too Fast for Conditions	0	13	28	41
Improper Backing	0	3	34	37
Drove Left Of Center	0	11	14	25
Cell Phone	0	7	16	23
Improper Overtaking	0	3	16	19
Passed Stop Sign	0	6	13	19
Drug Involved	0	3	10	13
Avoid No Contact - Other	0	4	8	12
Vehicle Skidded Before Brake	0	6	6	12
Failed to Yield to Police Vehicle	0	1	3	4
High Speed Pursuit	0	1	3	4
Pedestrian Error	0	2	1	3
Driverless Moving Vehicle	0	0	2	2
Texting	0	1	1	2
Failed to Yield to Emergency Vehicle	0	0	1	1
<b>Vehicle</b>	<b>0</b>	<b>6</b>	<b>12</b>	<b>18</b>
Inadequate Brakes	0	2	5	7
Other Mechanical Defect	0	3	3	6
Defective Tires	0	0	3	3
Defective Steering	0	1	1	2
<b>Environment</b>	<b>0</b>	<b>1</b>	<b>2</b>	<b>3</b>
Road Defect	0	1	2	3
Low Visibility Due to Smoke	0	0	0	0
Traffic Control Not Functioning	0	0	0	0
<b>Other</b>	<b>0</b>	<b>388</b>	<b>697</b>	<b>1,085</b>
None	0	351	619	970
Other - No Driver Error	0	37	78	115

<sup>1</sup> Multiple contributing factors may be reported for any vehicle in a crash.

**Table 16: People in Crashes by Crash Classification and Severity of Injuries in Rio Rancho, 2016**

Crash Classification	People in Crashes by Severity of Injuries					Total People
	Fatalities (Class K)	Suspected Serious Injuries (Class A)	Suspected Minor Injuries (Class B)	Possible Injuries (Class C)	No Apparent Injuries (Class O)	
Animal	0	0	1	1	2	4
Fixed Object	0	3	7	10	116	136
Other (Non-Collision)	0	0	2	2	16	20
Other (Object)	0	0	1	2	12	15
Other Vehicle	0	13	76	413	2,392	2,894
Overturn/Rollover	0	0	9	10	23	42
Parked Vehicle	0	0	0	0	78	78
Pedalcyclist	0	0	6	1	11	18
Pedestrian	0	1	2	2	11	16
Railroad Train	0	0	0	0	0	0
Rollover	0	1	1	1	1	4
Vehicle on Other Road	0	0	0	0	12	12
Missing Data	0	0	0	4	68	72
<b>Total People</b>	<b>0</b>	<b>18</b>	<b>105</b>	<b>446</b>	<b>2,742</b>	<b>3,311</b>

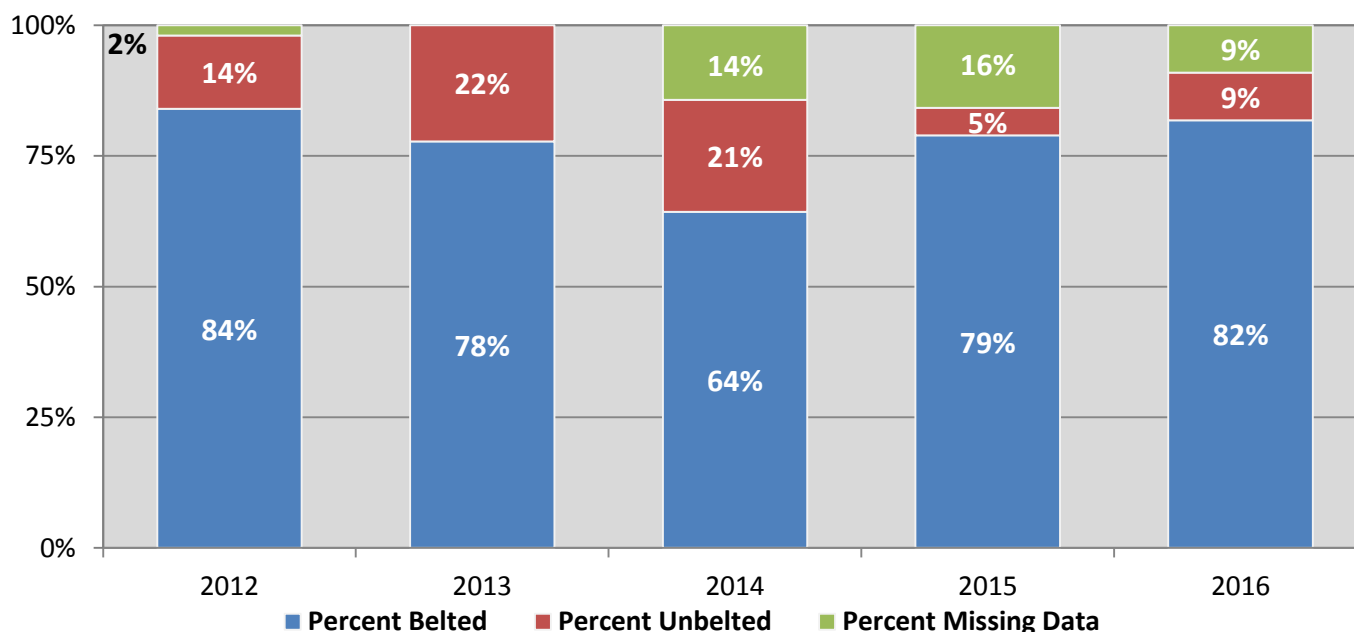
**Table 17: Killed or Injured Unbelted People in Crashes  
by Sex and Age Group in Rio Rancho, 2016**

Age Groups	Unbelted People Killed or Injured <sup>1,2</sup>				Total People
	Male	Percent of Male	Female	Percent of Female	
0-4	0	0%	0	0%	0
5-9	0	0%	0	0%	0
10-14	0	0%	0	0%	0
15-19	1	17%	2	33%	3
20-24	0	0%	0	0%	0
25-29	1	17%	1	17%	2
30-34	1	17%	0	0%	1
35-39	0	0%	0	0%	0
40-44	1	17%	0	0%	1
45-49	0	0%	0	0%	0
50-54	0	0%	1	17%	1
55-59	1	17%	0	0%	1
60-64	1	17%	0	0%	1
65-69	0	0%	1	17%	1
70 +	0	0%	1	17%	1
Missing Data	0	0%	0	0%	0
<b>Total People</b>	<b>6</b>	<b>100%</b>	<b>6</b>	<b>100%</b>	<b>12</b>

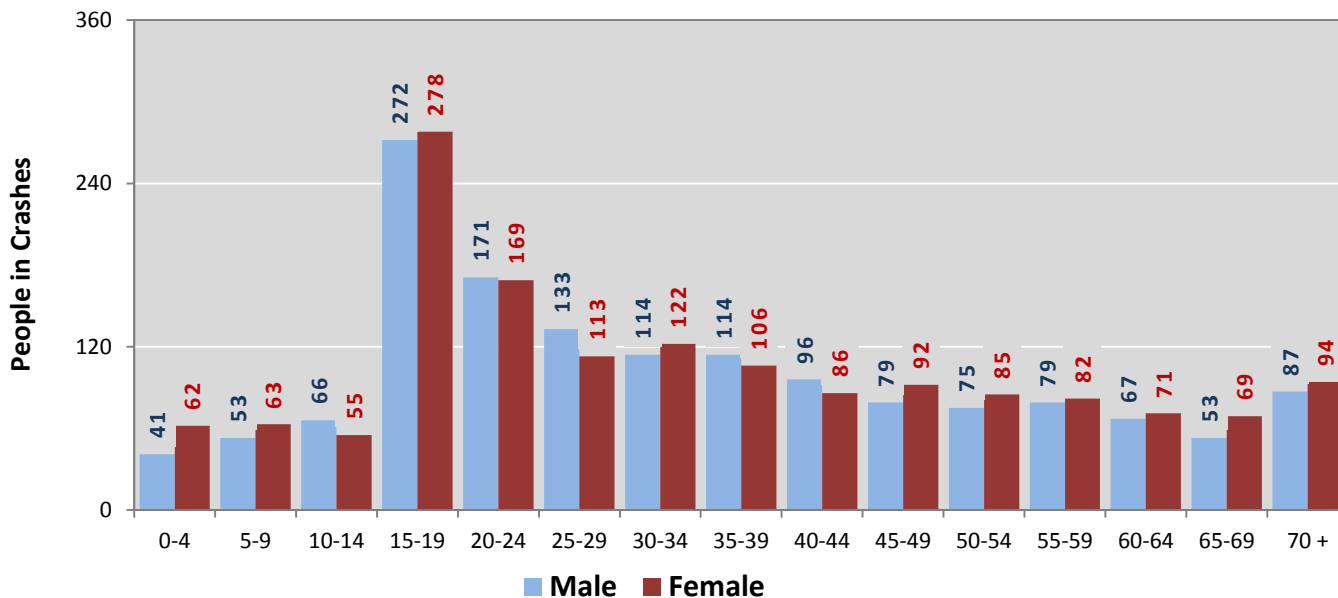
<sup>1</sup> People injured are in one of three categories: suspected serious injury, suspected minor injury, or possible injury.

<sup>2</sup> Excludes people in or on buses, heavy trucks, motorcycles, or ATVs.

**Figure 8: Seatbelt Use by People in Crashes with Fatal or  
Suspected Serious Injuries in Rio Rancho, 2012-2016**

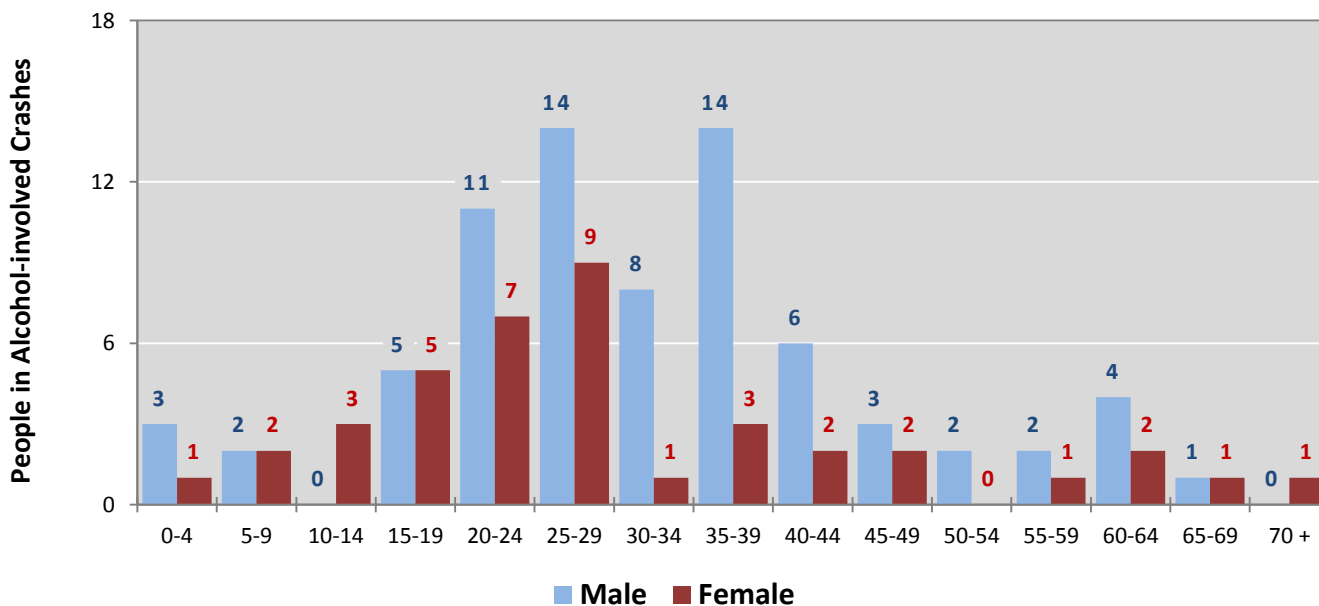


**Figure 9: People in Crashes by Age Group and Sex in Rio Rancho, 2016**



\* In 2016, Rio Rancho had 264 people in crashes for which age or sex data were missing.

**Figure 10: People in Alcohol-involved Crashes by Age Group and Sex in Rio Rancho, 2016**



\* In 2016, Rio Rancho had 9 people in alcohol-involved crashes for which age or sex data were missing.



**Table 18: Pedestrians and Pedalcyclists in Crashes  
by Age Group in Rio Rancho, 2012-2016**

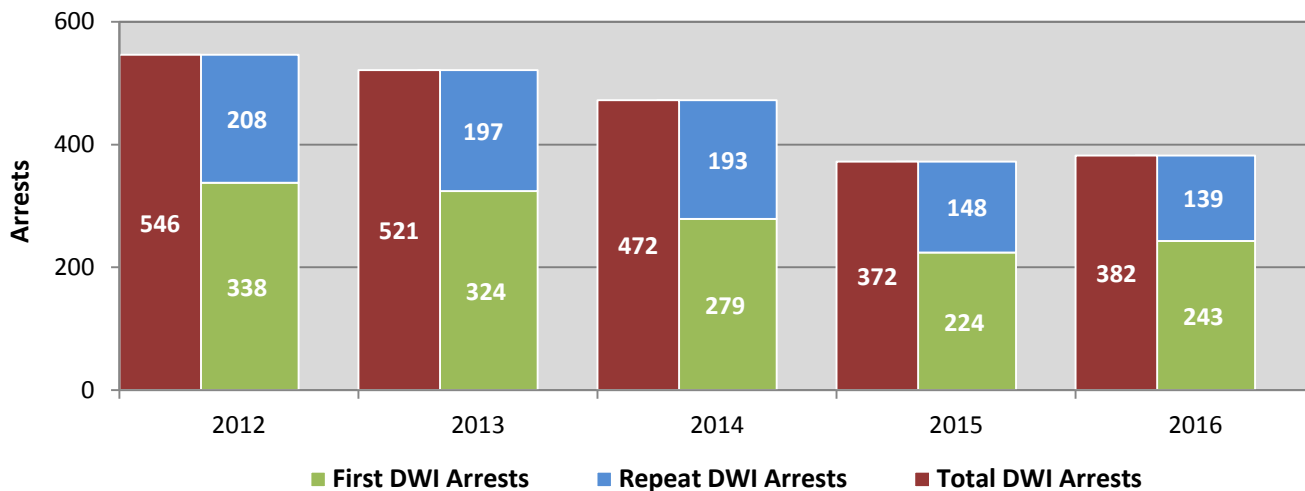
Age Groups	Pedestrians and Pedalcyclists <sup>1</sup> in Crashes					5-Year Total People
	2012	2013	2014	2015	2016	
0-4	0	0	0	0	0	0
5-9	1	1	0	1	1	4
10-14	3	0	1	2	2	8
15-19	7	3	3	0	0	13
20-24	2	1	1	0	0	4
25-29	2	0	1	2	1	6
30-34	1	0	1	0	3	5
35-39	1	0	1	0	1	3
40-44	1	0	0	1	0	2
45-49	1	1	0	2	0	4
50-54	3	1	0	2	2	8
55-59	0	0	0	0	0	0
60-64	1	0	0	0	1	2
65-69	0	0	0	0	1	1
70 +	0	0	1	0	3	4
Missing Data	2	1	0	0	0	3
<b>Total People</b>	<b>25</b>	<b>8</b>	<b>9</b>	<b>10</b>	<b>15</b>	<b>67</b>

**Table 19: Pedestrians and Pedalcyclists in Crashes by Alcohol Involvement  
and Severity of Injuries in Rio Rancho, 2016**

Alcohol Involvement	Pedestrians and Pedalcyclists <sup>1</sup> in Crashes					Total People
	Fatalities (Class K)	Suspected Serious Injuries (Class A)	Suspected Minor Injuries (Class B)	Possible Injuries (Class C)	No Apparent Injury (Class O)	
<b>Total Pedalcyclists</b>	<b>0</b>	<b>0</b>	<b>6</b>	<b>1</b>	<b>2</b>	<b>9</b>
Involved	0	0	1	0	0	1
Not Involved	0	0	5	1	2	8
<b>Total Pedestrians</b>	<b>0</b>	<b>1</b>	<b>2</b>	<b>2</b>	<b>1</b>	<b>6</b>
Involved	0	0	0	0	0	0
Not Involved	0	1	2	2	1	6
<b>Total People</b>	<b>0</b>	<b>1</b>	<b>8</b>	<b>3</b>	<b>3</b>	<b>15</b>

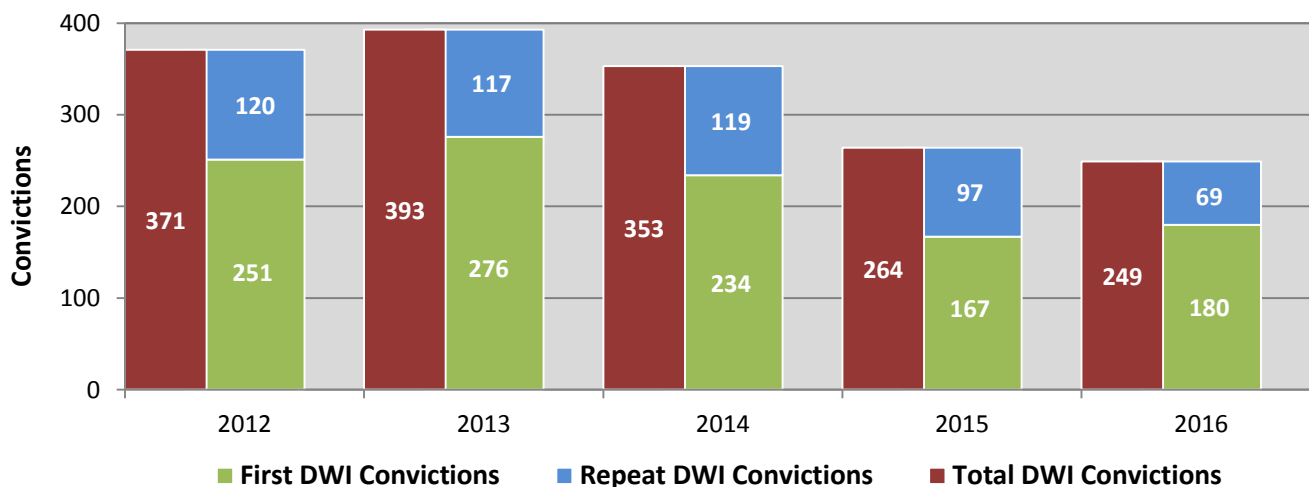
<sup>1</sup> Pedestrians and pedalcyclists are counted as non-motorized vehicles, when involved in a crash with a motor vehicle.

**Figure 11: DWI Arrests of Rio Rancho Residents Throughout the State, Showing First and Repeat DWI Arrests, 2012-2016**



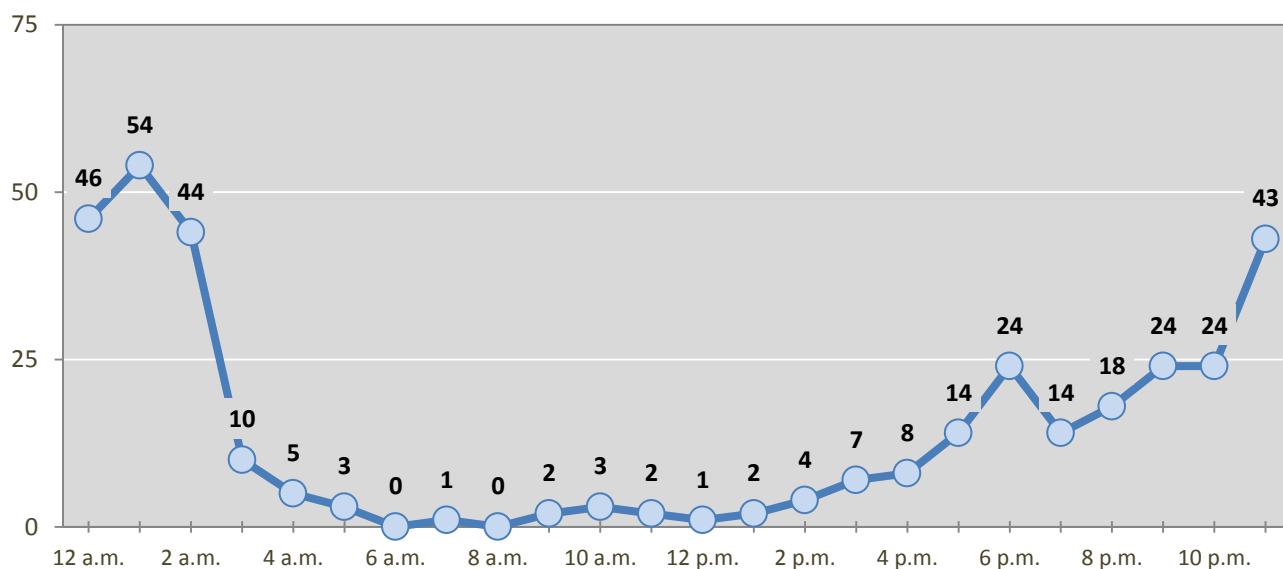
\*Values are based upon the year of the arrest.

**Figure 12: DWI Convictions of Rio Rancho Residents Throughout the State, Showing First and Repeat DWI Convictions, 2012-2016**



\*Values are based upon the year of the conviction.

**Figure 13: DWI Arrests by Hour of Rio Rancho Residents Throughout the State, 2016**



\* In 2016, Rio Rancho had 29 arrests for which hour data were missing.

**Table 20: DWI Arrests by Day of Week of Rio Rancho Residents Throughout the State, 2012-2016**

Day of Week	Year					5-Year Average
	2012	2013	2014	2015	2016	
Sunday	109	97	87	60	71	85
Monday	29	31	40	33	30	33
Tuesday	29	37	25	29	22	28
Wednesday	53	52	40	37	49	46
Thursday	65	81	69	54	50	64
Friday	111	96	85	78	72	88
Saturday	150	127	126	81	88	114
<b>Total Arrests</b>	<b>546</b>	<b>521</b>	<b>472</b>	<b>372</b>	<b>382</b>	<b>459</b>

**Table 21: Driver First DWI Arrests by Age Group  
of Rio Rancho Residents Throughout the State, 2012-2016**

Age Groups	Driver First DWI Arrests <sup>1</sup>				
	2012	2013	2014	2015	2016
15-19	27	23	17	6	15
20-24	90	95	74	62	62
25-29	68	53	49	41	35
30-34	35	46	42	33	31
35-39	30	27	25	13	28
40-44	28	23	20	15	22
45-49	20	18	14	13	13
50-54	24	19	17	16	10
55-59	8	11	10	5	11
60-64	4	3	3	5	8
65-69	2	4	2	6	4
70 +	1	2	2	1	1
Missing Data	1	0	4	8	3
<b>Total Drivers</b>	<b>338</b>	<b>324</b>	<b>279</b>	<b>224</b>	<b>243</b>

<sup>1</sup> Values are based upon the year of the arrest.

**Table 22: Driver Repeat DWI Arrests by Age Group  
of Rio Rancho Residents Throughout the State, 2012-2016**

Age Groups	Driver Repeat DWI Arrests <sup>1</sup>				
	2012	2013	2014	2015	2016
15-19	0	0	0	0	0
20-24	27	22	16	19	12
25-29	42	45	41	26	32
30-34	32	34	30	27	22
35-39	20	31	37	24	21
40-44	25	27	20	20	18
45-49	27	11	14	10	13
50-54	15	13	16	13	10
55-59	13	9	12	5	6
60-64	6	2	2	2	2
65-69	1	1	3	1	1
70 +	0	1	2	1	1
Missing Data	0	1	0	0	1
<b>Total Drivers</b>	<b>208</b>	<b>197</b>	<b>193</b>	<b>148</b>	<b>139</b>

<sup>1</sup> Values are based upon the year of the arrest.

**Table 23: Driver First DWI Convictions by Age Group  
of Rio Rancho Residents Throughout the State, 2012-2016**

Age Groups	Driver First DWI Convictions <sup>1</sup>				
	2012	2013	2014	2015	2016
15-19	21	11	8	2	11
20-24	58	77	57	49	49
25-29	53	53	52	35	23
30-34	34	33	30	25	32
35-39	22	27	24	15	19
40-44	15	25	18	13	14
45-49	15	20	15	10	7
50-54	20	11	12	9	8
55-59	10	9	9	3	5
60-64	3	4	3	3	5
65-69	0	4	4	1	6
70 +	0	1	0	0	0
Missing Data	0	1	2	2	1
<b>Total Drivers</b>	<b>251</b>	<b>276</b>	<b>234</b>	<b>167</b>	<b>180</b>

<sup>1</sup> Values are based upon the year of the conviction.

**Table 24: Driver Repeat DWI Convictions by Age Group  
of Rio Rancho Residents Throughout the State, 2012-2016**

Age Groups	Driver Repeat DWI Convictions <sup>1</sup>				
	2012	2013	2014	2015	2016
15-19	2	0	0	0	0
20-24	14	15	12	9	4
25-29	32	21	26	16	13
30-34	20	11	22	19	8
35-39	15	21	14	20	13
40-44	11	18	15	8	11
45-49	15	11	8	7	8
50-54	5	7	13	13	8
55-59	3	7	6	2	4
60-64	2	5	0	0	0
65-69	1	0	1	3	0
70 +	0	0	2	0	0
Missing Data	0	1	0	0	0
<b>Total Drivers</b>	<b>120</b>	<b>117</b>	<b>119</b>	<b>97</b>	<b>69</b>

<sup>1</sup> Values are based upon the year of the conviction.

**Table 25: Court Disposition of DWI Arrests for the State  
and of Rio Rancho Residents Throughout the State, 2016**

Court Disposition of DWI Arrest <sup>1</sup>	Rio Rancho	Statewide	Percent of Statewide
Total DWI Arrests	382	10,344	<b>3.7%</b>
DWI Arrests Resulting in Convictions	241	5,541	<b>4.3%</b>
DWI Arrests Resulting in Dismissals <sup>2</sup>	71	1,512	<b>4.7%</b>
DWI Arrests Awaiting Disposition	70	3,291	<b>2.1%</b>

<sup>1</sup> These are the number of DWI arrests in 2016 and whether the case resulted in a conviction or dismissal, or is still awaiting court disposition, as reported in the NM MVD Citation Tracking System (CTS) as of December 2017.

<sup>2</sup> For this table, a very small number of "not guilty" rulings may be included in the category Dismissals.

**Table 26: Average Number of Days from Date of DWI Arrest to Date of Court Disposition  
for the State and of Rio Rancho Residents Throughout the State, 2016**

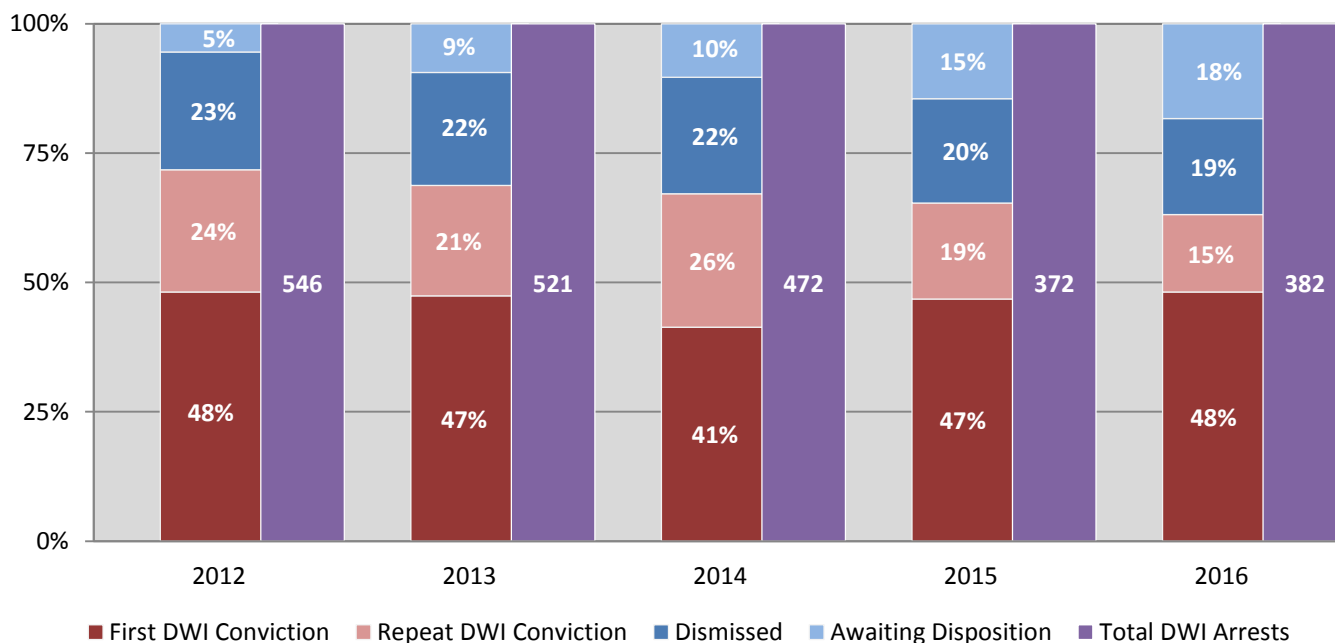
Court Disposition	Average Number of Days		Deviation from Statewide Average
	Rio Rancho	Statewide	
DWI Conviction	165	157	<b>8</b>
DWI Dismissal	181	179	<b>2</b>

**Table 27: Court Disposition of DWI Arrests  
of Rio Rancho Residents Throughout the State, 2012-2016**

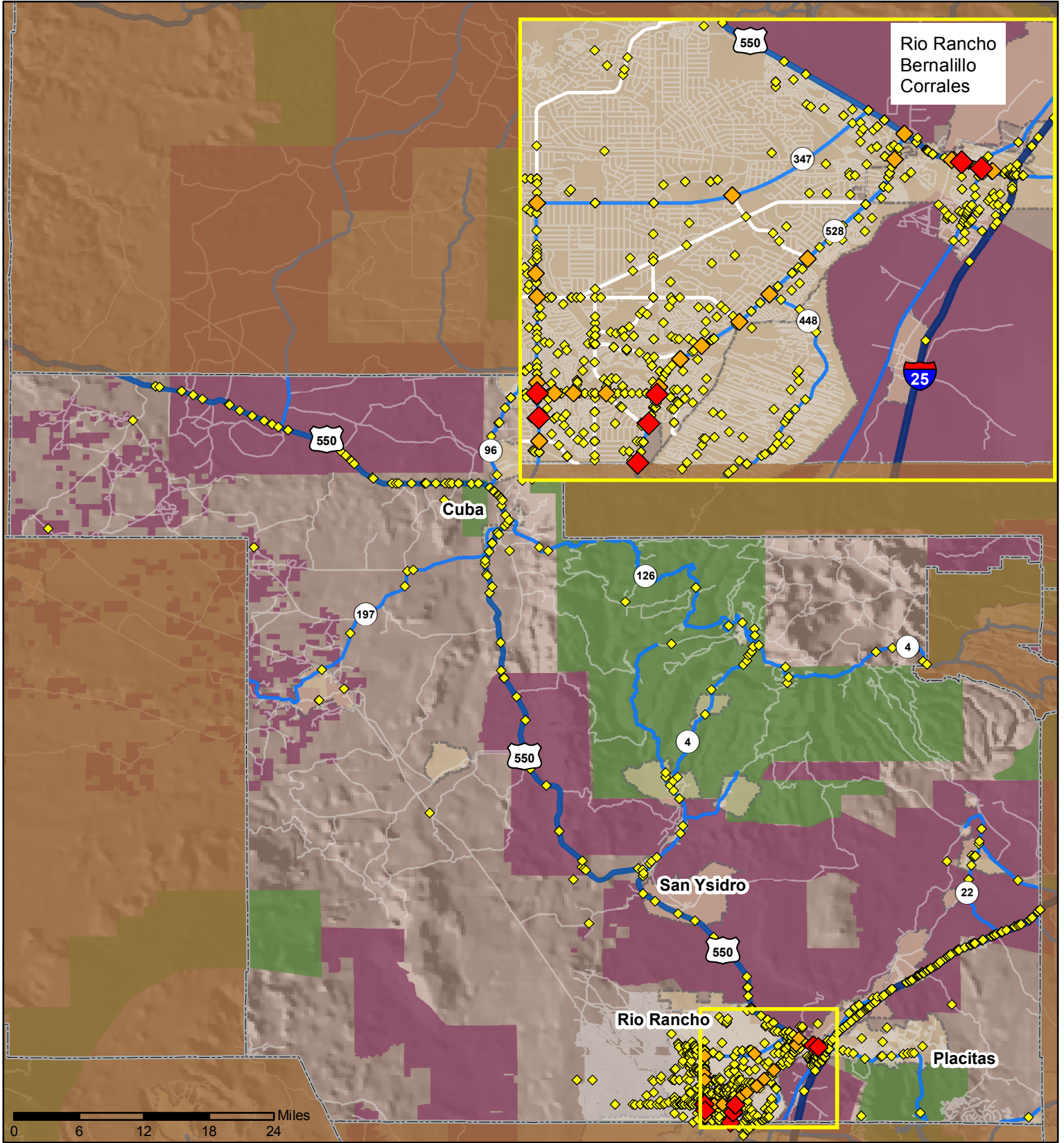
Year of DWI Arrest <sup>1</sup>	Court Disposition				Total DWI Arrests
	First DWI Conviction	Repeat DWI Conviction	Dismissed	Awaiting Disposition	
2012	263	129	124	30	546
2013	247	111	114	49	521
2014	195	122	106	49	472
2015	174	69	75	54	372
2016	184	57	71	70	382

<sup>1</sup> Values are based upon the year of the arrest.

**Figure 14: Court Dispositions by Percentage of DWI Arrests  
of Rio Rancho Residents Throughout the State, 2012-2016**



\*Table 27 contains the values used to calculate percentages shown in Figure 14.



## Legend

- Forest & Wildlife Areas
- Reservations & Pueblos
- County Boundaries
- City Boundaries
- Interstate Highways
- U.S. Highways
- State Highways
- Streets & Roadways

## Crashes 2016

- 1 - 10 Crashes
- 11 - 27 Crashes
- 28 - 53 Crashes

Data Source: NMDOT Crash File 2016  
<http://tru.unm.edu> CO#5801 tru@unm.edu

