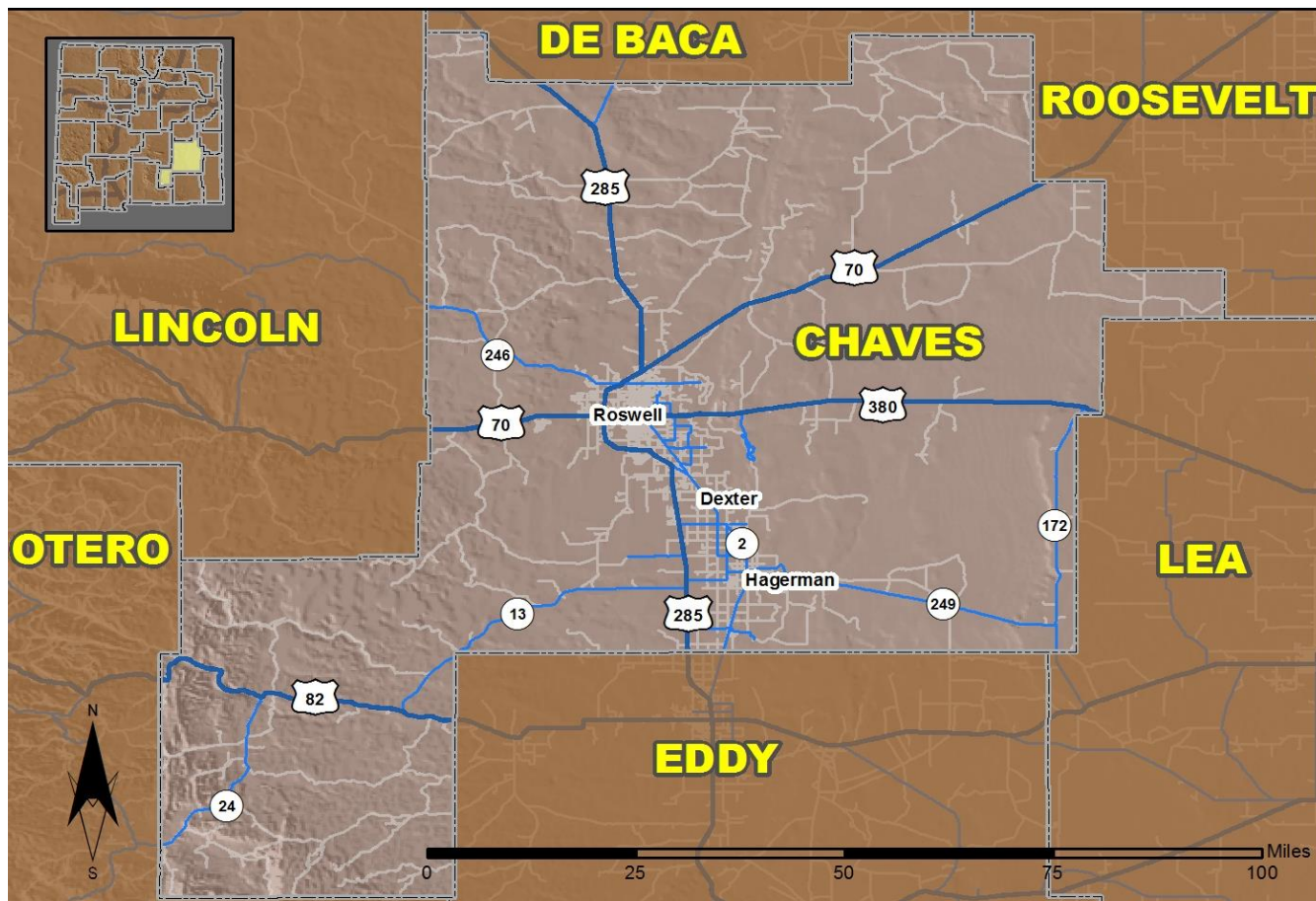


2016 Community Report

Chaves County



Produced for the New Mexico Department of Transportation,
Traffic Safety Division, Traffic Records Bureau,
Under Contract 5801 by the University of New Mexico,
Geospatial and Population Studies, Traffic Research Unit

Distributed in compliance with New Mexico Statute 66-7-214
as a reference source regarding New Mexico traffic crashes

For the purposes of this report, data are compiled by the University of New Mexico, Geospatial and Population Studies, Traffic Research Unit (TRU), on behalf of the New Mexico Department of Transportation (NMDOT). Data in this report may differ from that in other data sources, such as the Federal Fatality Analysis Reporting System (FARS), due to the timing of publications and rules for how data are compiled and maintained in Federal vs. State databases. If you have questions regarding this report, please contact the Traffic Safety Division at 505-827-0427.

<http://tru.unm.edu/Crash-Reports/Community-Reports/>

Definitions

Aggravated DWI – A driver arrested for 1) driving with a BAC of 0.16 or higher, 2) driving under the influence of alcohol or drugs and causing bodily injury to a human being as a result, or 3) driving under the influence of alcohol or drugs and refusing to submit to a BAC test at the time of arrest for DWI.

Alcohol-involved Crash – A crash for which the Uniform Crash Report indicated that 1) a DWI citation was issued, 2) alcohol was a contributing factor, or 3) a person in control of a vehicle (including a pedestrian or pedalcyclist) was suspected of being under the influence of alcohol.

Alcohol-involved Driver – A person in control of a vehicle who was cited for DWI or indicated on the Uniform Crash Report as being either suspected or determined by testing to be under the influence of alcohol. There can be multiple alcohol-involved drivers in a single alcohol-involved crash.

Crash – A reported incident on a public roadway involving one or more motor vehicles that resulted in death, personal injury, or at least \$500 in property damage. Crashes on private property (such as a parking lot) are not included.

DWI Arrest (Citation) – In this report, a DWI arrest (a.k.a. a DWI citation) is a driver arrested for either DWI or aggravated DWI. New Mexico’s legal limit for presumption of driving while intoxicated (DWI) is 0.08 for non-commercial drivers older than 21 years of age, 0.04 for commercial vehicle drivers, and 0.02 for drivers younger than 21 years of age.

DWI Conviction – A driver convicted of driving under the intoxicating influence of alcohol, narcotics, or pathogenic drugs, including aggravated DWI.

Fatal Crash – A crash in which at least one person was killed. More than one person can be killed in a single fatal crash.

Fatalities – The number of people killed in a crash. The terms “killed” and “deaths” are synonymous with “fatalities.” A fatality is crash-related if it occurs at the time of the crash or if the person(s) involved in the crash dies within 30 days.

Injury Crash – A reported crash in which at least one person was injured. Injury crashes involve at least one suspected serious injury (Class A), suspected minor injury (Class B), or possible injury (Class C). Fatal crashes are not included.

Missing Data – An indication that the applicable field on the UCR form was left blank or contained an invalid code. Starting with crashes that occurred in 2012, improvements in the identification of missing data in the NMDOT crash database led to an increase in the reported amount of missing data.

Pedalcyclist – A person riding a mechanism of transport that is powered solely by pedals (a.k.a. bicyclist).

Pedestrian – A person on foot, walking, running, jogging, hiking, sitting or lying down who is involved in a motor vehicle traffic crash.

Sources

Crash Data – New Mexico Department of Transportation, Traffic Safety Division, Traffic Records Bureau, Traffic Crash Database, as of the report date below. Crash data are compiled using NMDOT Uniform Crash Reports (UCR), submitted by law enforcement agencies in the state, for any incident on a public roadway involving one or more motor vehicles that resulted in death, injury, or at least \$500 in property damage. These reports are processed by the NMDOT Traffic Records Bureau and analyzed by the University of New Mexico, Geospatial and Population Studies, Traffic Research Unit (TRU).

DWI Citation Tracking System (CTS) – New Mexico Taxation and Revenue Department (NM TRD), Motor Vehicle Division (MVD), DWI Citation Tracking System (CTS), as of December 2017. Repeat offenders are identified by the combination of account key, arrest date, and citation number. County data are based upon the county where the arrest took place. City data are based upon the city where the offender resides.

Urban Areas – New Mexico Department of Transportation, Asset Management and Planning, 2010 U.S. Census Urbanized Area Boundaries, NMDOT-Adjusted, and U.S. Census Urban Clusters, August 21, 2013. In crashes before 2013, “urban” was defined as a town or city with a population of at least 2,500 people.

**Table 1: Total Crashes and Alcohol-involved Crashes by
Crash Severity in Chaves County, 2007-2016**

Year	Total Crashes				Alcohol-involved Crashes			
	Fatal	Injury	Property Damage Only	Total	Fatal	Injury	Property Damage Only	Total
2007	9	401	1,123	1,533	4	22	41	67
2008	9	414	1,224	1,647	3	47	59	109
2009	13	372	1,109	1,494	4	44	36	84
2010	15	345	1,053	1,413	2	27	39	68
2011	13	381	948	1,342	5	34	37	76
2012	6	480	1,351	1,837	3	34	56	93
2013	10	366	995	1,371	5	22	22	49
2014	7	313	894	1,214	4	39	20	63
2015	13	370	1,000	1,383	3	23	30	56
2016	13	365	996	1,374	4	15	22	41

**Figure 1: Alcohol-involved Fatal and Injury Crashes Compared with
Non-alcohol-involved Fatal and Injury Crashes in Chaves County, 2007-2016**

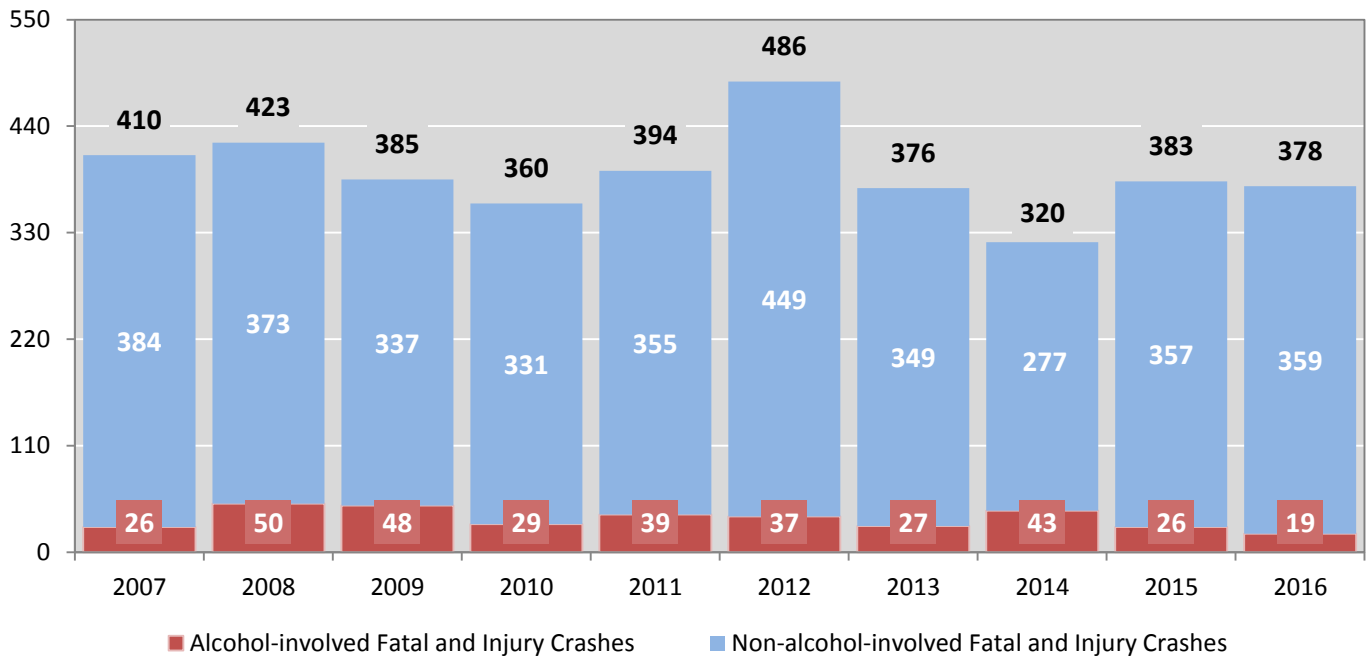


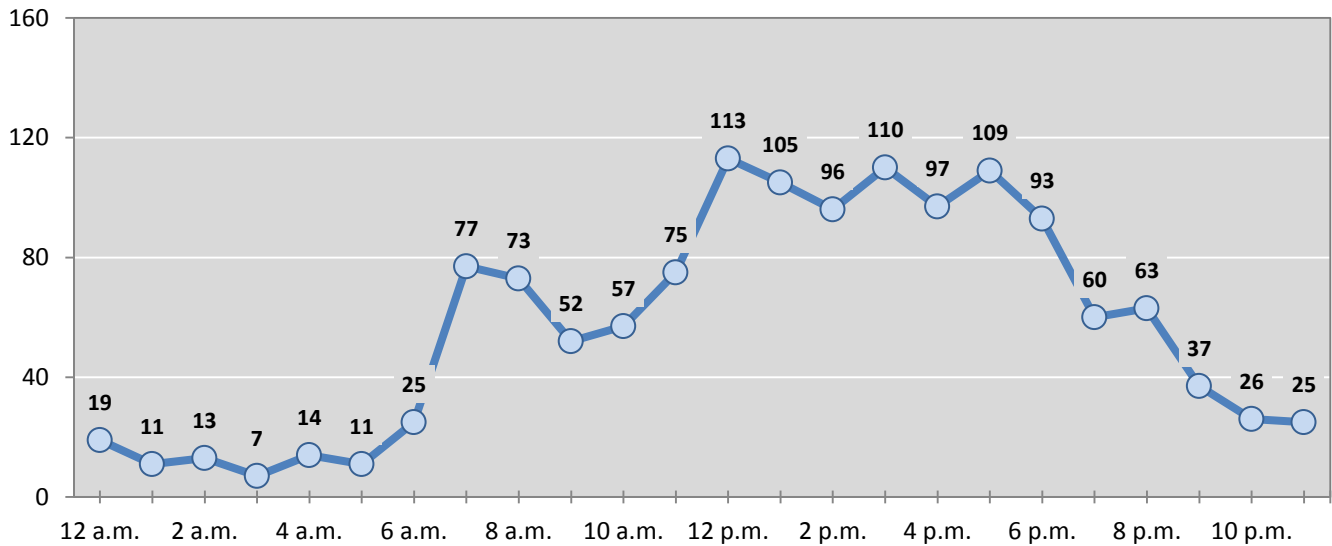
Table 2: Crashes by Month in Chaves County, 2012-2016

Month	Crashes					5-Year Average
	2012	2013	2014	2015	2016	
January	217	108	91	138	144	140
February	172	102	96	116	126	122
March	174	109	92	107	108	118
April	181	118	39	122	106	113
May	157	106	102	103	103	114
June	148	114	105	112	97	115
July	130	116	103	120	119	118
August	165	123	88	116	122	123
September	122	99	117	103	131	114
October	119	126	126	127	109	121
November	105	123	108	107	84	105
December	147	127	147	112	125	132
Total Crashes	1,837	1,371	1,214	1,383	1,374	1,436

Table 3: Alcohol-involved Crashes by Month in Chaves County, 2012-2016

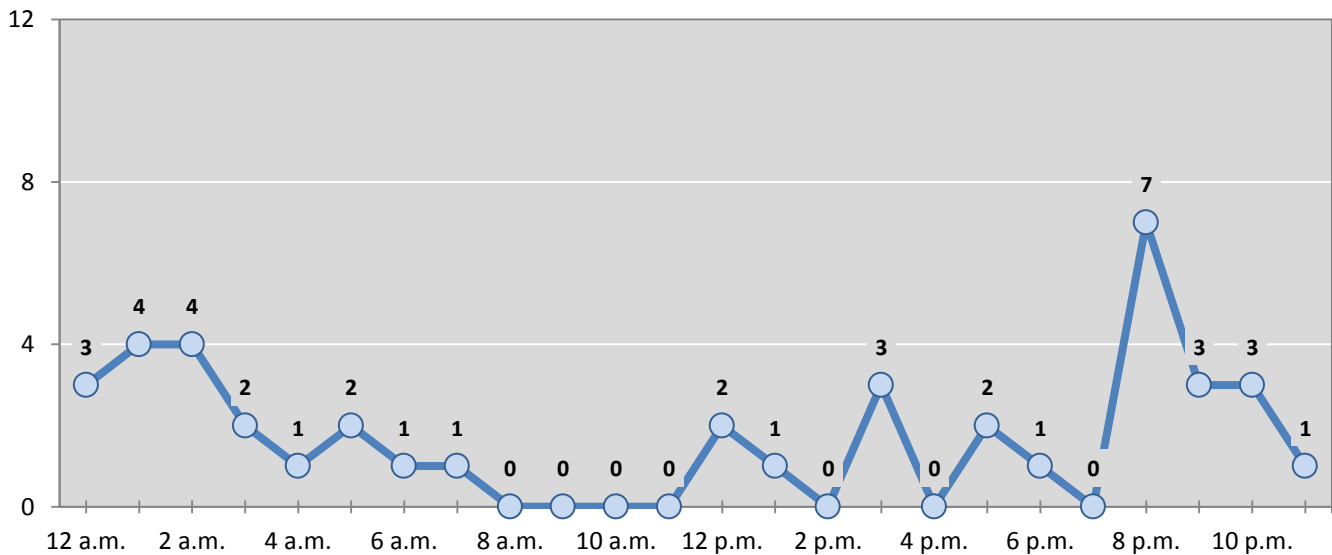
Month	Alcohol-involved Crashes					5-Year Average
	2012	2013	2014	2015	2016	
January	12	4	4	5	3	6
February	5	6	5	2	1	4
March	6	2	6	4	3	4
April	10	6	1	5	2	5
May	6	3	6	4	6	5
June	7	8	6	5	3	6
July	12	5	6	5	5	7
August	14	1	7	6	4	6
September	6	5	6	6	7	6
October	3	4	4	6	1	4
November	5	2	3	3	3	3
December	7	3	9	5	3	5
Total Crashes	93	49	63	56	41	60

Figure 2: Crashes by Hour in Chaves County, 2016



* In 2016, Chaves County had 6 crashes for which hour data were missing.

Figure 3: Alcohol-involved Crashes by Hour in Chaves County, 2016



* In 2016, Chaves County had 0 alcohol-involved crashes for which hour data were missing.

Table 4: Alcohol-involved Crashes by Day of Week in Chaves County, 2012-2016

Day of Week	Alcohol-involved Crashes					5-Year Average
	2012	2013	2014	2015	2016	
Sunday	20	12	18	7	7	13
Monday	8	5	9	7	5	7
Tuesday	8	5	4	8	4	6
Wednesday	9	6	8	3	5	6
Thursday	16	7	6	6	7	8
Friday	18	4	7	8	4	8
Saturday	14	10	11	17	9	12
Total Crashes	93	49	63	56	41	60

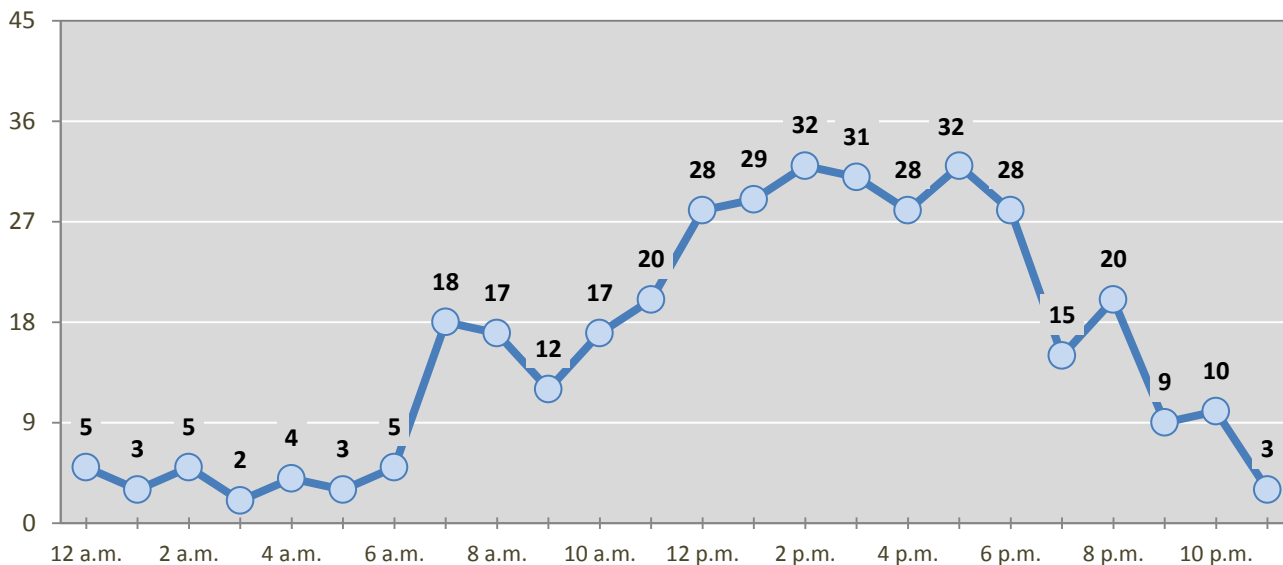
Table 5: Fatal and Injury Crashes by Day of Week in Chaves County, 2012-2016

Day of Week	Fatal and Injury Crashes					5-Year Average
	2012	2013	2014	2015	2016	
Sunday	48	47	33	43	33	41
Monday	72	54	45	45	50	53
Tuesday	66	53	55	56	42	54
Wednesday	88	49	44	46	69	59
Thursday	70	57	50	66	56	60
Friday	84	68	57	77	67	71
Saturday	58	48	36	50	61	51
Total Crashes	486	376	320	383	378	389

Table 6: Pedestrian and Pedalcyclist Crashes by Day of Week in Chaves County, 2012-2016

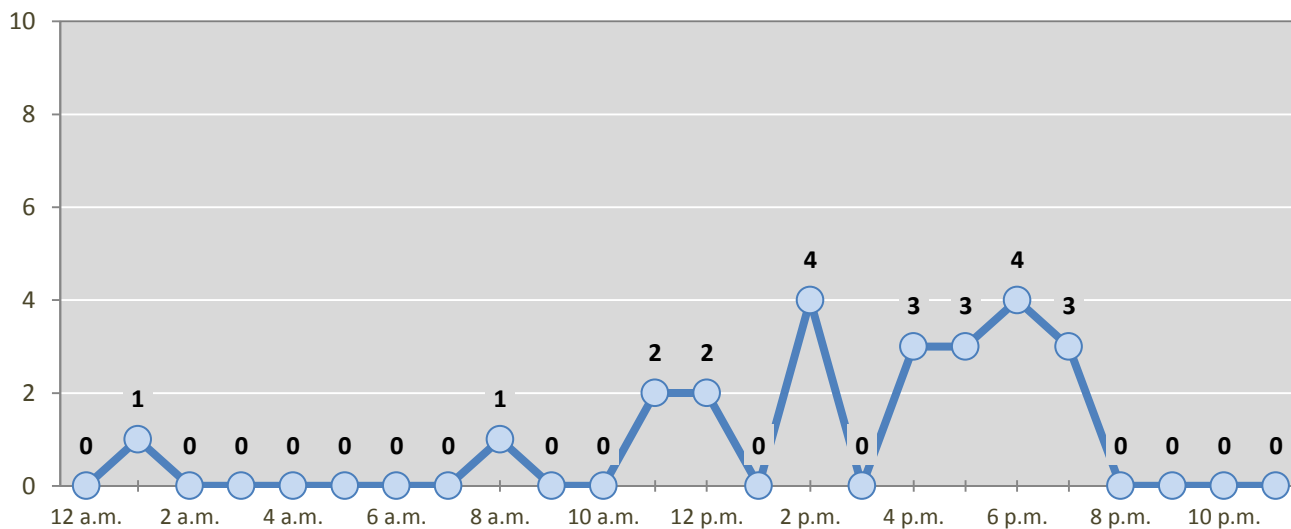
Day of Week	Pedestrian and Pedalcyclist Crashes					5-Year Average
	2012	2013	2014	2015	2016	
Sunday	2	2	0	3	3	2
Monday	1	7	3	6	3	4
Tuesday	2	1	3	6	0	2
Wednesday	6	3	5	3	5	4
Thursday	5	1	0	7	4	3
Friday	1	1	2	7	7	4
Saturday	3	2	3	2	1	2
Total Crashes	20	17	16	34	23	22

Figure 4: Fatal and Injury Crashes by Hour in Chaves County, 2016



* In 2016, Chaves County had 2 crashes for which hour data were missing.

Figure 5: Pedestrian and Pedalcyclist Crashes by Hour in Chaves County, 2016



* In 2016, Chaves County had 0 crashes for which hour data were missing.

Table 7: Severity of Injuries to People in Crashes by Rural and Urban Location in Chaves County, 2016

Urban and Rural Locations by Alcohol-involvement	People in Crashes by Severity of Injuries					Total People
	Fatalities (Class K)	Suspected Serious Injuries (Class A)	Suspected Minor Injuries (Class B)	Possible Injuries (Class C)	No Apparent Injuries (Class O)	
People in Alcohol-involved Crashes	4	2	16	11	54	87
Urban	1	1	13	9	52	76
Rural Non-Interstate	3	1	3	2	2	11
Rural Interstate	0	0	0	0	0	0
People in Crashes	14	37	120	350	2,986	3,507
Urban	2	19	85	320	2,619	3,045
Rural Non-Interstate	12	18	35	30	367	462
Rural Interstate	0	0	0	0	0	0
Percent in Alcohol-involved Crashes	29%	5%	13%	3%	2%	2%

Table 8: Total Crashes by Roadway System and Crash Severity in Chaves County, 2012-2016

Crash Severity by System	Crashes by Year					5-Year Average
	2012	2013	2014	2015	2016	
Total Rural Interstate	0	0	0	0	0	0
Fatal Crash	0	0	0	0	0	0
Injury Crash	0	0	0	0	0	0
Property Damage Only Crash	0	0	0	0	0	0
Total Rural Non-Interstate	221	230	284	295	239	253
Fatal Crash	3	6	7	9	11	7
Injury Crash	75	83	90	92	57	79
Property Damage Only Crash	143	141	187	194	171	167
Total Urban	1,616	1,141	930	1,088	1,135	1,182
Fatal Crash	3	4	0	4	2	3
Injury Crash	405	283	223	278	308	299
Property Damage Only Crash	1,208	854	707	806	825	880

Table 9: Total Crashes by Crash Classification in Chaves County, 2012-2016

Crash Classification	Total Crashes by Year					5-Year Average
	2012	2013	2014	2015	2016	
Animal	67	34	52	67	58	56
Fixed Object	180	131	146	159	155	154
Other (Non-Collision)	31	12	16	21	28	22
Other (Object)	46	19	20	22	19	25
Other Vehicle	1,140	843	676	808	820	857
Overturn/Rollover	84	87	89	22	40	64
Parked Vehicle	224	178	147	142	159	170
Pedalcyclist	12	5	7	16	13	11
Pedestrian	9	12	10	19	10	12
Railroad Train	1	3	1	2	2	2
Rollover	0	0	0	57	26	17
Vehicle on Other Road	18	14	12	15	24	17
Missing Data	25	33	38	33	20	30
Total Crashes	1,837	1,371	1,214	1,383	1,374	1,436

Table 10: Vehicles in Crashes by Vehicle Type in Chaves County, 2012-2016

Vehicle Type ¹	Vehicles in Crashes by Vehicle Type					5-Year Average
	2012	2013	2014	2015	2016	
Bus	16	6	7	2	4	7
Motorcycle	60	25	21	23	32	32
Passenger	1,670	1,261	1,084	1,336	1,443	1,359
Pedalcyclist	11	5	7	15	13	10
Pedestrian	10	12	10	20	10	12
Pickup	758	573	529	535	473	574
Semi	65	67	51	66	68	63
Van/SUV/4WD	447	348	295	271	312	335
Other Vehicle	7	26	15	61	17	25
Missing Data	276	179	199	142	127	185
Total Vehicles	3,320	2,502	2,218	2,471	2,499	2,602

¹ Pedestrians and pedalcyclists are counted as non-motorized vehicles, when involved in a crash with a motor vehicle. See Page 17 for data on drivers of non-motorized vehicles in crashes (i.e. pedestrians and pedalcyclists).

Table 11: Motor Vehicle Drivers in Crashes by Vehicle Type and Age Group in Chaves County, 2016

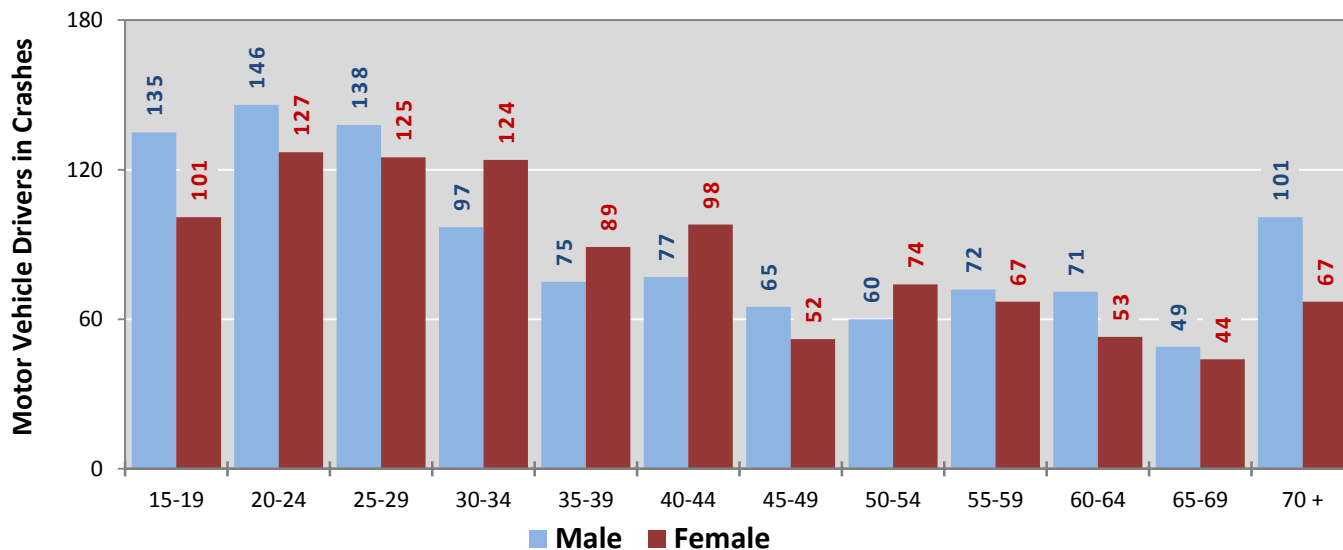
Age Groups	Motor Vehicle ¹ Drivers by Vehicle Type and Age Group								Total Drivers
	Bus	Motor-cycle	Passenger	Pickup	Semi	Van 4WD SUV	Other Vehicle	Missing Data	
15-19	0	2	155	52	1	25	1	0	236
20-24	0	3	192	45	3	27	1	2	273
25-29	0	3	163	49	9	34	3	2	263
30-34	0	2	134	40	3	42	0	0	221
35-39	1	3	90	36	7	24	2	1	164
40-44	0	2	102	31	8	28	3	1	175
45-49	1	4	64	25	7	14	2	0	117
50-54	0	5	80	30	5	13	0	1	134
55-59	0	2	64	43	9	19	2	0	139
60-64	0	0	70	25	6	23	0	0	124
65-69	0	0	56	24	0	12	1	0	93
70 +	2	1	114	27	4	19	0	1	168
Missing Data	0	5	159	46	6	32	2	119	369
Total Drivers	4	32	1,443	473	68	312	17	127	2,476

Table 12: Alcohol-involved Motor Vehicle Drivers in Crashes by Vehicle Type and Age Group in Chaves County, 2016

Age Groups	Alcohol-involved Motor Vehicle ¹ Drivers by Vehicle Type and Age Group								Total Drivers
	Bus	Motor-cycle	Passenger	Pickup	Semi	Van 4WD SUV	Other Vehicle	Missing Data	
15-19	0	0	2	1	0	0	0	0	3
20-24	0	0	6	4	0	1	0	0	11
25-29	0	1	3	1	0	0	0	0	5
30-34	0	0	6	0	0	1	0	0	7
35-39	0	0	3	0	0	1	0	0	4
40-44	0	0	0	1	0	1	0	0	2
45-49	0	0	0	1	0	0	0	0	1
50-54	0	0	1	0	0	0	0	0	1
55-59	0	0	1	0	0	1	0	0	2
60-64	0	0	1	0	0	0	0	0	1
65-69	0	0	0	0	0	0	0	0	0
70 +	0	0	0	1	0	0	0	0	1
Missing Data	0	0	3	0	0	0	0	0	3
Total Drivers	0	1	26	9	0	5	0	0	41

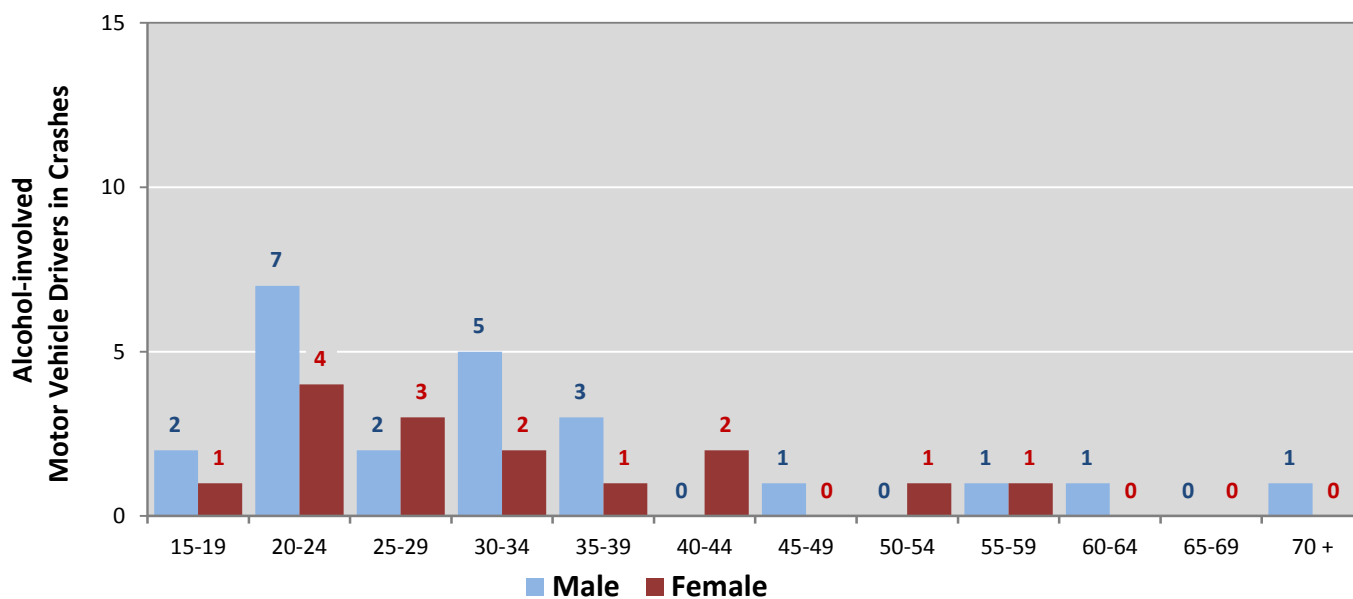
¹ See Page 17 for data on drivers of non-motorized vehicles in crashes (i.e. pedestrians and pedalcyclists).

Figure 6: Motor Vehicle Drivers in Crashes by Age Group and Sex in Chaves County, 2016



* In 2016, Chaves County had 369 drivers in crashes for which age or sex data were missing.

Figure 7: Alcohol-involved Motor Vehicle Drivers in Crashes by Age Group and Sex in Chaves County, 2016



* In 2016, Chaves County had 3 drivers in crashes for which age or sex data were missing.

Table 13: Alcohol-involved Motor Vehicle Drivers Under 21 (Ages 15-20) in Crashes in Chaves County, 2012-2016

Age ¹	Year					5-Year Total
	2012	2013	2014	2015	2016	
15	0	0	0	0	1	1
16	0	0	0	0	0	0
17	1	1	2	2	0	6
18	2	1	2	0	2	7
19	6	0	3	0	0	9
20	3	2	3	1	2	11
Total Drivers	12	4	10	3	5	34

Table 14: Motor Vehicle Drivers Under 21 (Ages 15-20) in Crashes by Age, Sex and Alcohol-involvement in Chaves County, 2016

Age ¹	Total Drivers				Alcohol-involved Drivers			
	Sex		Total Drivers	Percent of Total	Sex		Total Drivers	Percent of Total
	Male	Female			Male	Female		
15	12	4	16	5%	1	0	1	20%
16	20	11	31	10%	0	0	0	0%
17	28	32	60	20%	0	0	0	0%
18	41	32	73	24%	1	1	2	40%
19	34	22	56	19%	0	0	0	0%
20	32	30	62	21%	2	0	2	40%
Total Drivers	167	131	298	100%	4	1	5	100%

¹ For analysis of drivers under age 21, when the driver age or sex are not identified on the crash report (typically hit-and-run drivers), the driver data are considered unreliable and are excluded from the analysis.

**Table 15: Frequency of Contributing Factors in Crashes
by Crash Severity in Chaves County, 2016**

Contributing Factors	Frequency of Contributing Factor ¹ by Crash Severity			
	Frequency in Fatal Crashes	Frequency in Injury Crashes	Frequency in Property Damage Only Crashes	Frequency in All Crashes
Human	25	708	1,602	2,335
Driver Inattention	8	242	576	826
Other Improper Driving	2	66	197	265
Failed to Yield Right of Way	0	100	153	253
Following Too Closely	0	67	143	210
Improper Backing	0	8	132	140
Made Improper Turn	0	32	74	106
Excessive Speed	4	39	53	96
Speed Too Fast for Conditions	0	23	47	70
Drove Left Of Center	2	19	37	58
Passed Stop Sign	0	21	35	56
Disregarded Traffic Signal	0	29	18	47
Improper Lane Change	1	6	35	42
Alcohol Involved	3	15	22	40
Improper Overtaking	0	9	23	32
Avoid No Contact - Vehicle	0	8	19	27
Drug Involved	3	6	7	16
Avoid No Contact - Other	0	4	8	12
Vehicle Skidded Before Brake	1	5	6	12
Cell Phone	0	1	7	8
Pedestrian Error	1	4	1	6
Failed to Yield to Police Vehicle	0	2	3	5
Failed to Yield to Emergency Vehicle	0	2	1	3
Driverless Moving Vehicle	0	0	2	2
Texting	0	0	2	2
High Speed Pursuit	0	0	1	1
Vehicle	2	14	24	40
Other Mechanical Defect	0	7	10	17
Inadequate Brakes	0	3	9	12
Defective Tires	2	1	5	8
Defective Steering	0	3	0	3
Environment	0	1	5	6
Road Defect	0	0	4	4
Low Visibility Due to Smoke	0	1	0	1
Traffic Control Not Functioning	0	0	1	1
Other	2	404	951	1,357
None	1	304	740	1,045
Other - No Driver Error	1	100	211	312

¹ Multiple contributing factors may be reported for any vehicle in a crash.

Table 16: People in Crashes by Crash Classification and Severity of Injuries in Chaves County, 2016

Crash Classification	People in Crashes by Severity of Injuries					Total People
	Fatalities (Class K)	Suspected Serious Injuries (Class A)	Suspected Minor Injuries (Class B)	Possible Injuries (Class C)	No Apparent Injuries (Class O)	
Animal	0	0	2	2	99	103
Fixed Object	3	3	7	10	190	213
Other (Non-Collision)	0	2	3	6	51	62
Other (Object)	0	0	1	1	29	31
Other Vehicle	1	13	66	289	2,083	2,452
Overturn/Rollover	0	3	16	10	27	56
Parked Vehicle	0	0	1	5	350	356
Pedalcyclist	0	1	10	1	20	32
Pedestrian	1	2	2	4	12	21
Railroad Train	1	0	0	0	2	3
Rollover	8	13	11	7	11	50
Vehicle on Other Road	0	0	1	11	60	72
Missing Data	0	0	0	4	52	56
Total People	14	37	120	350	2,986	3,507

Table 17: Killed or Injured Unbelted People in Crashes by Sex and Age Group in Chaves County, 2016

Age Groups	Unbelted People Killed or Injured ^{1,2}				Total People
	Male	Percent of Male	Female	Percent of Female	
0-4	0	0%	0	0%	0
5-9	0	0%	0	0%	0
10-14	1	7%	0	0%	1
15-19	6	40%	3	27%	9
20-24	3	20%	1	9%	4
25-29	1	7%	2	18%	3
30-34	2	13%	2	18%	4
35-39	0	0%	1	9%	1
40-44	0	0%	1	9%	1
45-49	0	0%	0	0%	0
50-54	0	0%	0	0%	0
55-59	2	13%	0	0%	2
60-64	0	0%	1	9%	1
65-69	0	0%	0	0%	0
70 +	0	0%	0	0%	0
Missing Data	0	0%	0	0%	0
Total People	15	100%	11	100%	26

¹ People injured are in one of three categories: suspected serious injury, suspected minor injury, or possible injury.

² Excludes people in or on buses, heavy trucks, motorcycles, or ATVs.

Figure 8: Seatbelt Use by People in Crashes with Fatal or Suspected Serious Injuries in Chaves County, 2012-2016

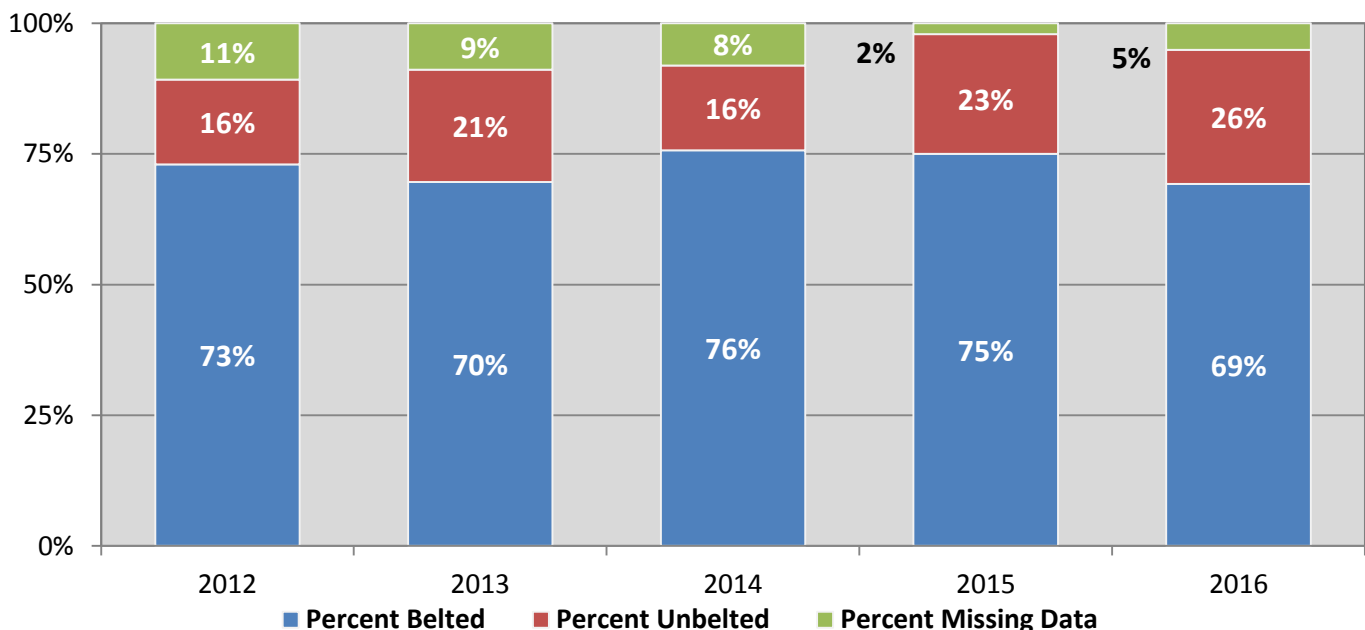
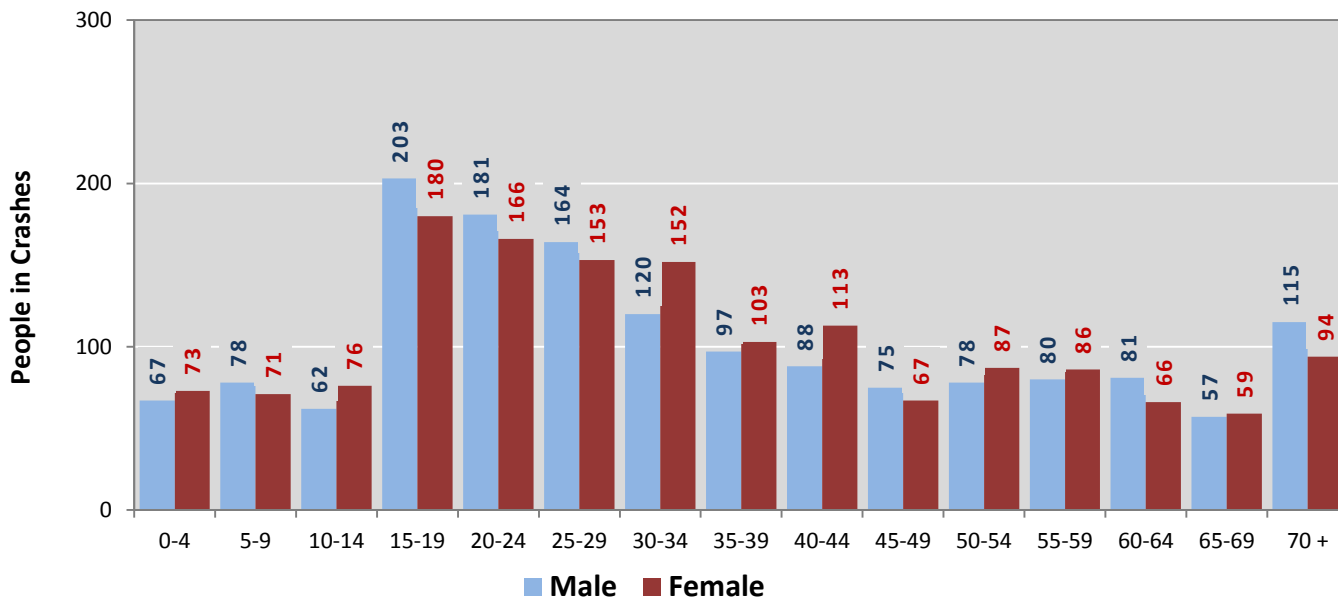
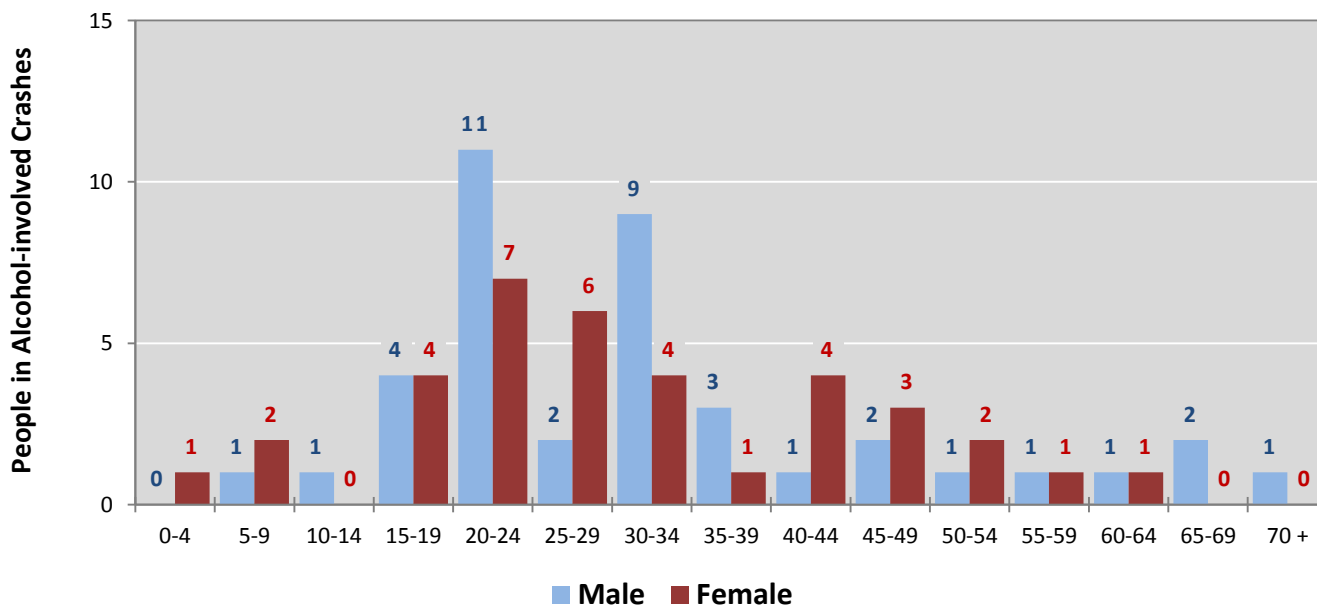


Figure 9: People in Crashes by Age Group and Sex in Chaves County, 2016



* In 2016, Chaves County had 415 people in crashes for which age or sex data were missing.

Figure 10: People in Alcohol-involved Crashes by Age Group and Sex in Chaves County, 2016



* In 2016, Chaves County had 11 people in alcohol-involved crashes for which age or sex data were missing.

Table 18: Pedestrians and Pedalcyclists in Crashes by Age Group in Chaves County, 2012-2016

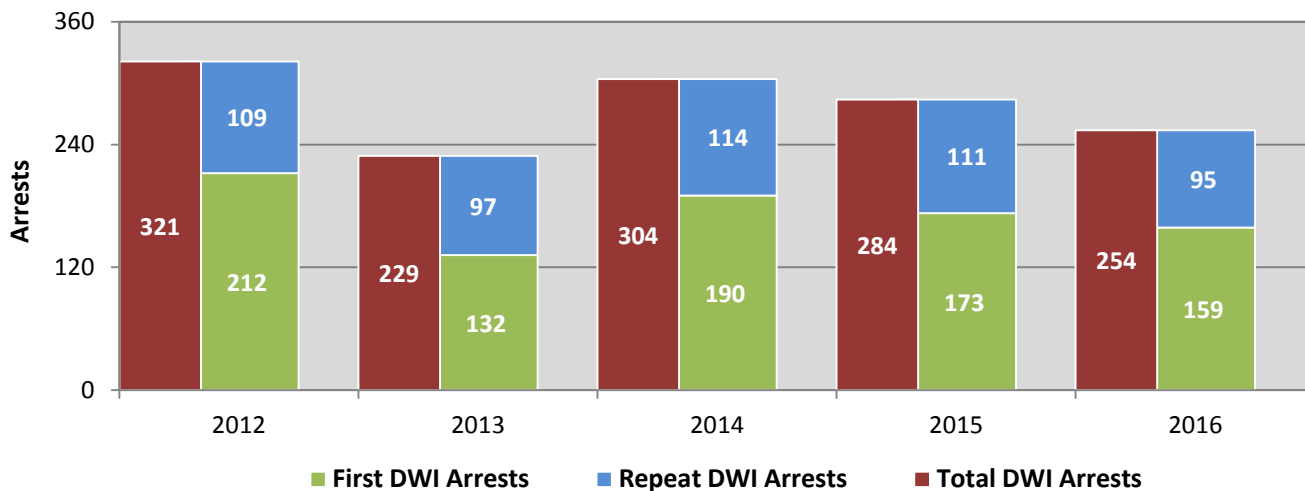
Age Groups	Pedestrians and Pedalcyclists ¹ in Crashes					5-Year Total People
	2012	2013	2014	2015	2016	
0-4	1	0	1	1	0	3
5-9	1	1	1	3	1	7
10-14	3	1	1	5	3	13
15-19	2	2	3	5	2	14
20-24	4	2	0	1	2	9
25-29	0	2	2	2	1	7
30-34	1	0	3	2	3	9
35-39	1	0	2	2	0	5
40-44	2	2	1	2	1	8
45-49	3	0	0	2	2	7
50-54	1	1	1	3	0	6
55-59	0	3	0	2	1	6
60-64	0	0	0	0	3	3
65-69	0	1	0	2	1	4
70 +	0	0	0	2	0	2
Missing Data	2	2	2	1	3	10
Total People	21	17	17	35	23	113

Table 19: Pedestrians and Pedalcyclists in Crashes by Alcohol Involvement and Severity of Injuries in Chaves County, 2016

Alcohol Involvement	Pedestrians and Pedalcyclists ¹ in Crashes					Total People
	Fatalities (Class K)	Suspected Serious Injuries (Class A)	Suspected Minor Injuries (Class B)	Possible Injuries (Class C)	No Apparent Injury (Class O)	
Total Pedalcyclists	0	1	10	1	1	13
Involved	0	0	0	0	0	0
Not Involved	0	1	10	1	1	13
Total Pedestrians	1	2	2	4	1	10
Involved	0	0	0	0	0	0
Not Involved	1	2	2	4	1	10
Total People	1	3	12	5	2	23

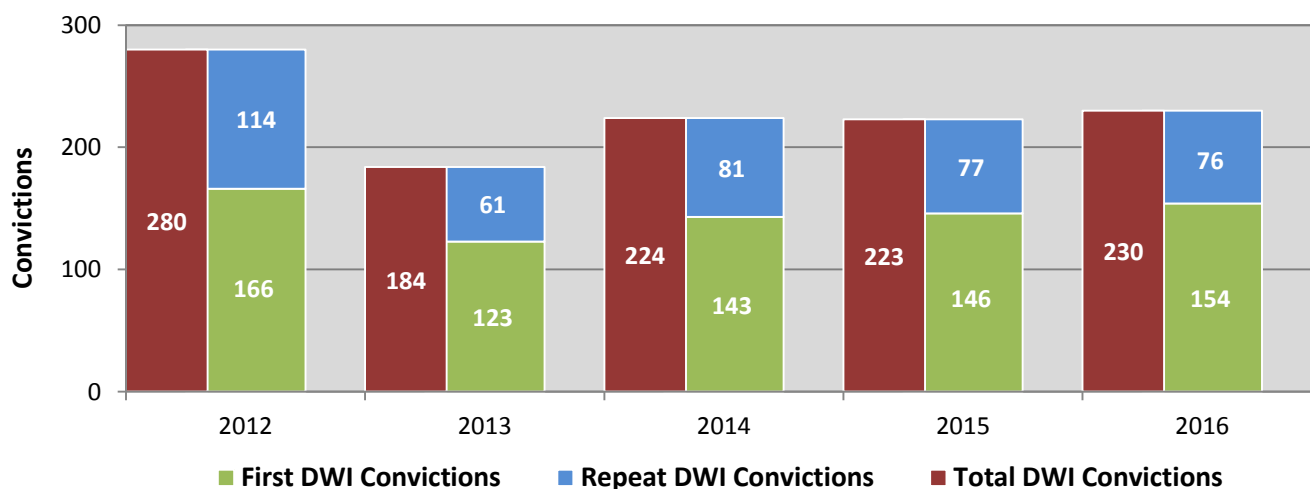
¹ Pedestrians and pedalcyclists are counted as non-motorized vehicles, when involved in a crash with a motor vehicle.

**Figure 11: DWI Arrests in Chaves County,
Showing First and Repeat DWI Arrests, 2012-2016**



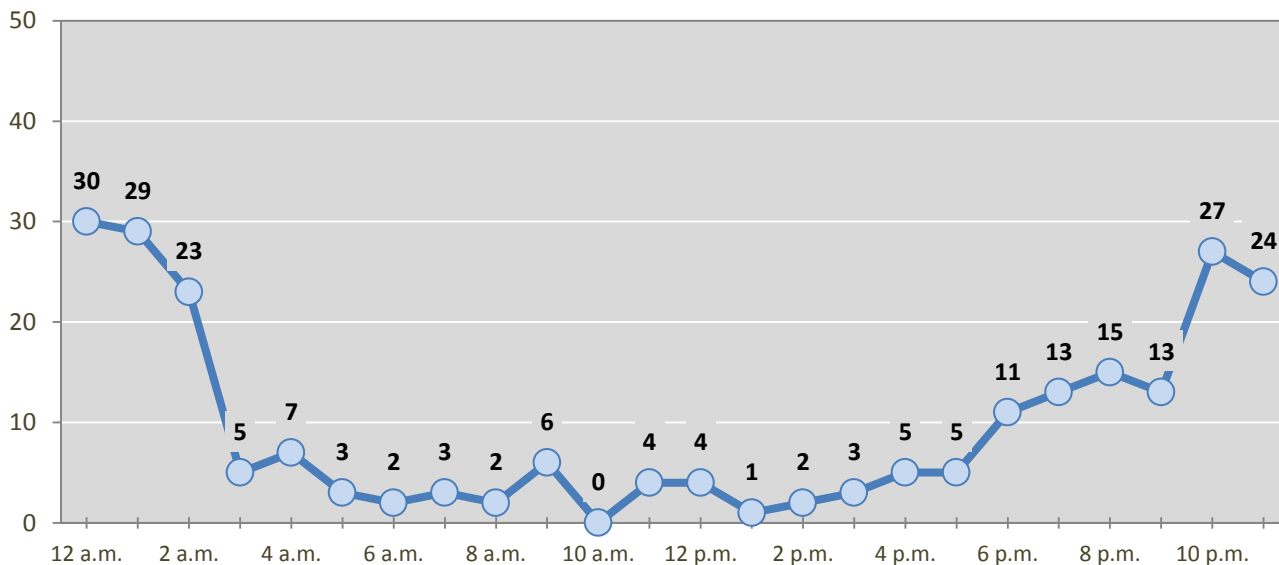
*Values are based upon the year of the arrest.

**Figure 12: DWI Convictions in Chaves County,
Showing First and Repeat DWI Convictions, 2012-2016**



*Values are based upon the year of the conviction.

Figure 13: DWI Arrests by Hour in Chaves County, 2016



* In 2016, Chaves County had 17 arrests for which hour data were missing.

Table 20: DWI Arrests by Day of Week in Chaves County, 2012-2016

Day of Week	Year					5-Year Average
	2012	2013	2014	2015	2016	
Sunday	74	37	74	68	54	61
Monday	20	16	16	28	15	19
Tuesday	30	23	22	25	21	24
Wednesday	35	18	30	23	30	27
Thursday	37	28	31	28	29	31
Friday	48	33	52	38	43	43
Saturday	77	74	79	74	62	73
Total Arrests	321	229	304	284	254	278

Table 21: Driver First DWI Arrests by Age Group in Chaves County, 2012-2016

Age Groups	Driver First DWI Arrests ¹				
	2012	2013	2014	2015	2016
15-19	9	4	19	14	15
20-24	72	41	41	41	36
25-29	31	28	26	36	27
30-34	26	12	25	16	31
35-39	13	15	25	26	18
40-44	15	9	12	12	7
45-49	14	7	15	8	5
50-54	11	6	14	9	9
55-59	6	4	3	5	3
60-64	8	4	6	3	4
65-69	4	2	0	2	3
70 +	0	0	2	0	0
Missing Data	3	0	2	1	1
Total Drivers	212	132	190	173	159

¹ Values are based upon the year of the arrest.

Table 22: Driver Repeat DWI Arrests by Age Group in Chaves County, 2012-2016

Age Groups	Driver Repeat DWI Arrests ¹				
	2012	2013	2014	2015	2016
15-19	1	0	1	0	0
20-24	3	13	11	8	6
25-29	17	15	12	19	23
30-34	19	13	22	19	12
35-39	18	11	12	16	18
40-44	12	11	18	13	11
45-49	20	11	12	6	7
50-54	11	11	9	8	7
55-59	5	5	11	10	8
60-64	3	6	4	8	2
65-69	0	1	1	3	0
70 +	0	0	1	0	1
Missing Data	0	0	0	1	0
Total Drivers	109	97	114	111	95

¹ Values are based upon the year of the arrest.

**Table 23: Driver First DWI Convictions
by Age Group in Chaves County, 2012-2016**

Age Groups	Driver First DWI Convictions ¹				
	2012	2013	2014	2015	2016
15-19	12	3	8	10	9
20-24	56	41	39	37	40
25-29	21	21	26	34	26
30-34	21	15	13	16	24
35-39	18	13	14	17	14
40-44	13	8	12	6	13
45-49	9	9	10	11	6
50-54	4	5	13	7	9
55-59	4	2	3	4	2
60-64	5	3	1	3	6
65-69	3	1	2	0	2
70 +	0	0	1	0	1
Missing Data	0	2	1	1	2
Total Drivers	166	123	143	146	154

¹ Values are based upon the year of the conviction.

**Table 24: Driver Repeat DWI Convictions
by Age Group in Chaves County, 2012-2016**

Age Groups	Driver Repeat DWI Convictions ¹				
	2012	2013	2014	2015	2016
15-19	0	1	0	0	0
20-24	4	7	11	6	4
25-29	21	7	8	10	18
30-34	23	6	13	15	7
35-39	13	13	12	6	15
40-44	13	5	10	11	12
45-49	20	6	9	7	5
50-54	13	8	7	8	5
55-59	1	4	6	7	5
60-64	3	4	3	5	3
65-69	2	0	1	1	2
70 +	0	0	1	0	0
Missing Data	1	0	0	1	0
Total Drivers	114	61	81	77	76

¹ Values are based upon the year of the conviction.

Table 25: Court Disposition of DWI Arrests for the State and Chaves County, 2016

Court Disposition of DWI Arrest ¹	Chaves County	Statewide	Percent of Statewide
Total DWI Arrests	254	10,344	2.5%
DWI Arrests Resulting in Convictions	184	5,541	3.3%
DWI Arrests Resulting in Dismissals ²	13	1,512	0.9%
DWI Arrests Awaiting Disposition	57	3,291	1.7%

¹ These are the number of DWI arrests in 2016 and whether the case resulted in a conviction or dismissal, or is still awaiting court disposition, as reported in the NM MVD Citation Tracking System (CTS) as of December 2017.

² For this table, a very small number of "not guilty" rulings may be included in the category Dismissals.

Table 26: Average Number of Days from Date of DWI Arrest to Date of Court Disposition for the State and Chaves County, 2016

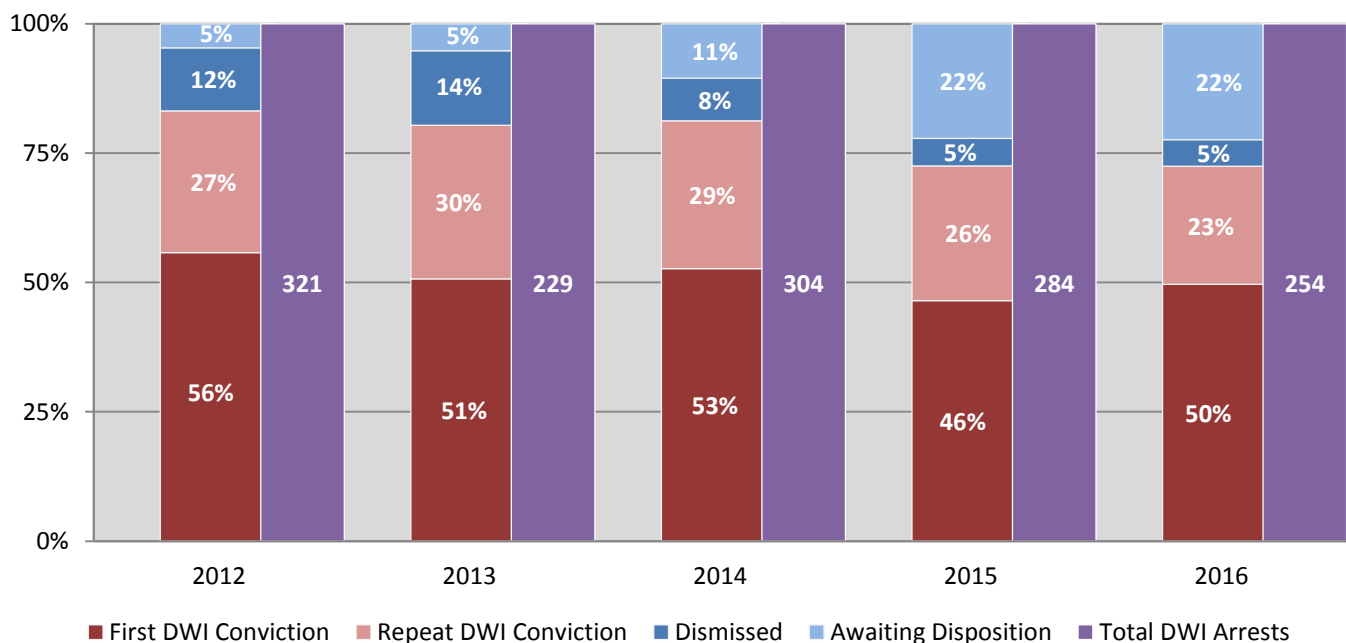
Court Disposition	Average Number of Days		Deviation from Statewide Average
	Chaves County	Statewide	
DWI Conviction	122	157	-35
DWI Dismissal	236	179	57

Table 27: Court Disposition of DWI Arrests in Chaves County, 2012-2016

Year of DWI Arrest ¹	Court Disposition				Total DWI Arrests
	First DWI Conviction	Repeat DWI Conviction	Dismissed	Awaiting Disposition	
2012	179	88	39	15	321
2013	116	68	33	12	229
2014	160	87	25	32	304
2015	132	74	15	63	284
2016	126	58	13	57	254

¹ Values are based upon the year of the arrest.

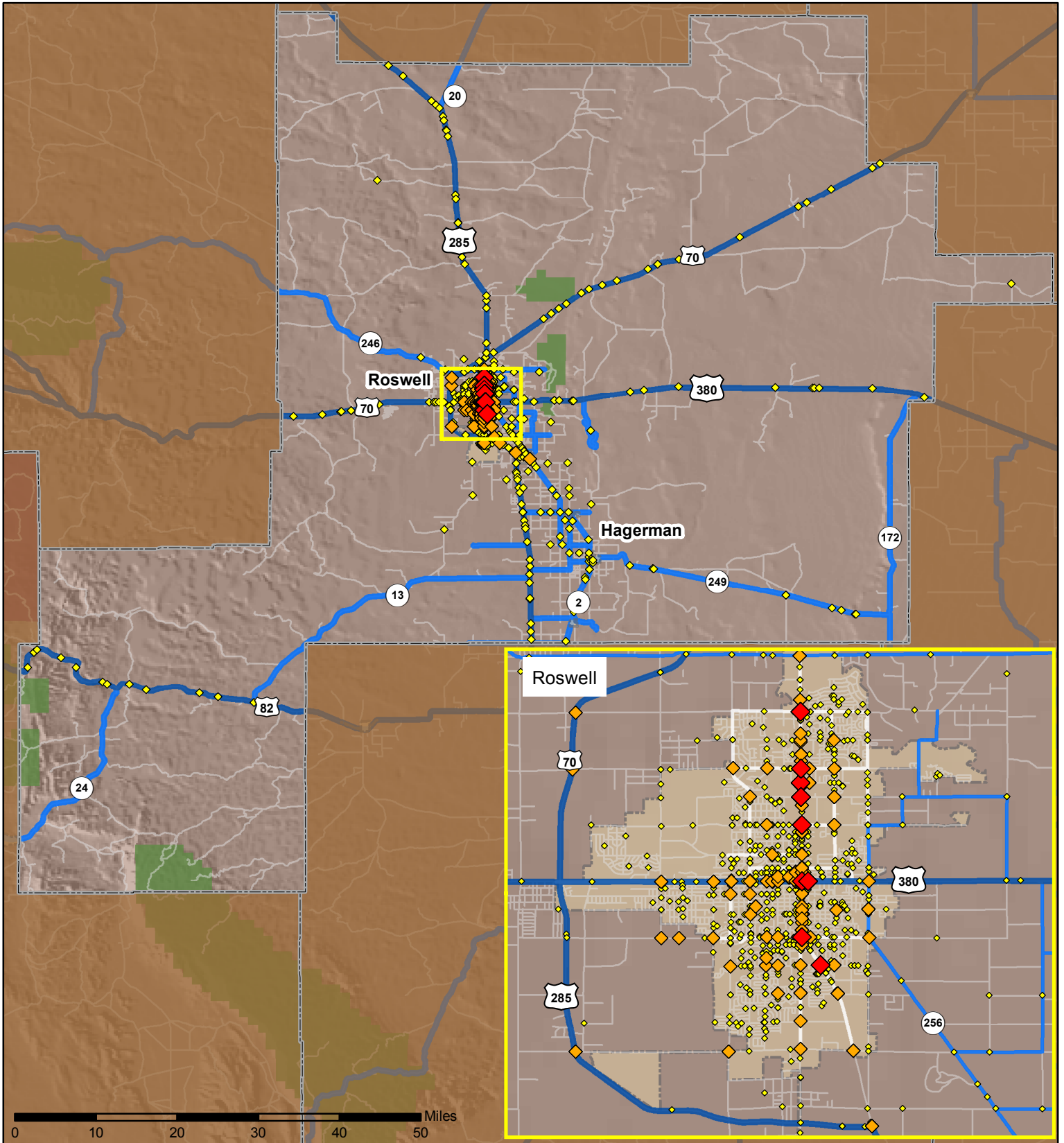
Figure 14: Court Dispositions by Percentage of DWI Arrests in Chaves County, 2012-2016



*Table 27 contains the values used to calculate percentages shown in Figure 14.

Crashes in Chaves County, New Mexico, 2016

Map created by the Traffic Research Unit, Geospatial & Population Studies at UNM



Legend



- Forest & Wildlife Areas
- Reservations & Pueblos
- County Boundaries
- City Boundaries
- Interstate Highways
- U.S. Highways
- State Highways
- Streets & Roadways

Crashes 2016

- 1 - 2 Crashes
- 3 - 10 Crashes
- 11 - 25 Crashes

Data Source: NMDOT Crash File 2016
<http://tru.unm.edu> CO#5801 tru@unm.edu