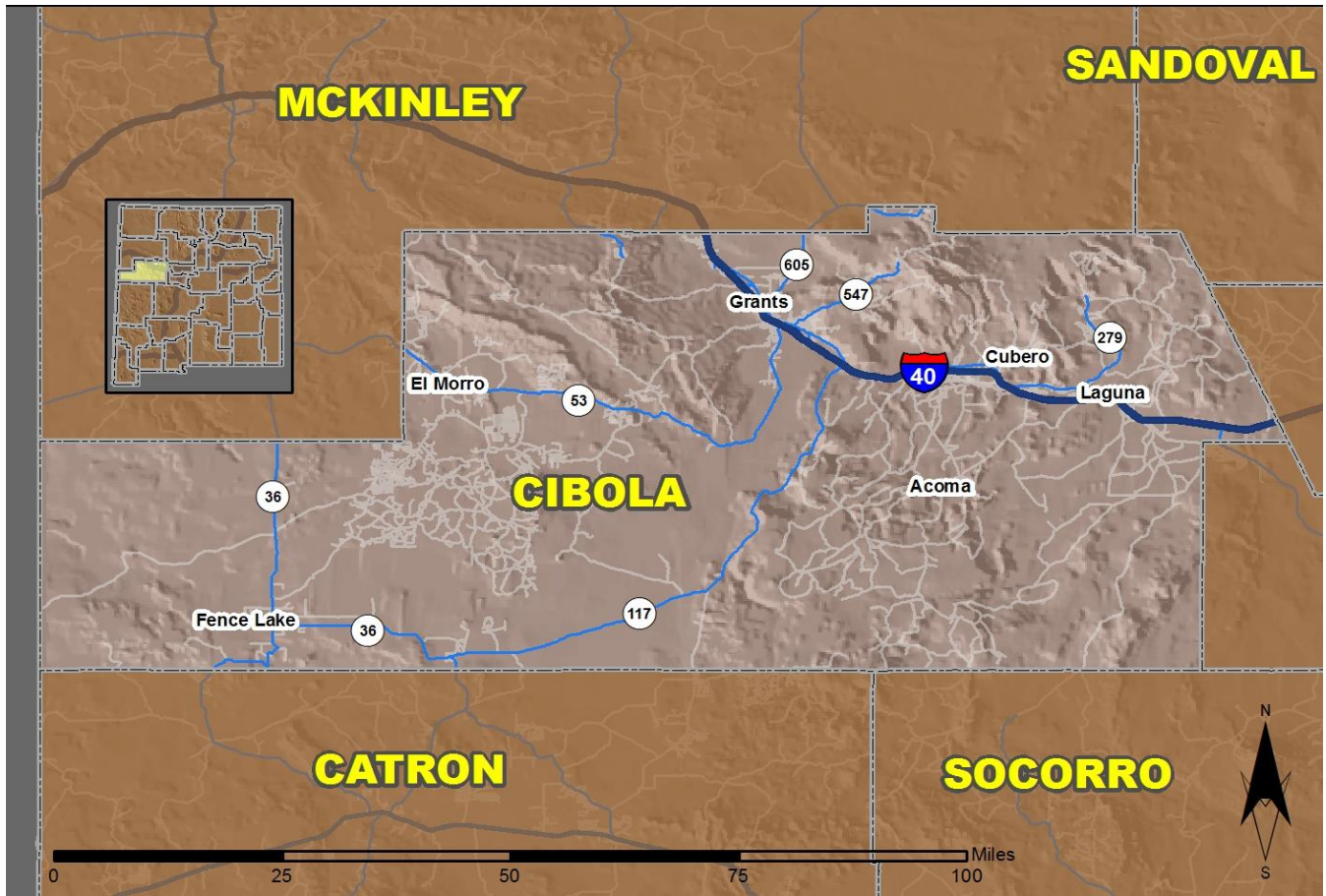


2016 Community Report

Cibola County



Produced for the New Mexico Department of Transportation,
Traffic Safety Division, Traffic Records Bureau,
Under Contract 5801 by the University of New Mexico,
Geospatial and Population Studies, Traffic Research Unit

Distributed in compliance with New Mexico Statute 66-7-214
as a reference source regarding New Mexico traffic crashes

For the purposes of this report, data are compiled by the University of New Mexico, Geospatial and Population Studies, Traffic Research Unit (TRU), on behalf of the New Mexico Department of Transportation (NMDOT). Data in this report may differ from that in other data sources, such as the Federal Fatality Analysis Reporting System (FARS), due to the timing of publications and rules for how data are compiled and maintained in Federal vs. State databases. If you have questions regarding this report, please contact the Traffic Safety Division at 505-827-0427.

<http://tru.unm.edu/Crash-Reports/Community-Reports/>

Definitions

Aggravated DWI – A driver arrested for 1) driving with a BAC of 0.16 or higher, 2) driving under the influence of alcohol or drugs and causing bodily injury to a human being as a result, or 3) driving under the influence of alcohol or drugs and refusing to submit to a BAC test at the time of arrest for DWI.

Alcohol-involved Crash – A crash for which the Uniform Crash Report indicated that 1) a DWI citation was issued, 2) alcohol was a contributing factor, or 3) a person in control of a vehicle (including a pedestrian or pedalcyclist) was suspected of being under the influence of alcohol.

Alcohol-involved Driver – A person in control of a vehicle who was cited for DWI or indicated on the Uniform Crash Report as being either suspected or determined by testing to be under the influence of alcohol. There can be multiple alcohol-involved drivers in a single alcohol-involved crash.

Crash – A reported incident on a public roadway involving one or more motor vehicles that resulted in death, personal injury, or at least \$500 in property damage. Crashes on private property (such as a parking lot) are not included.

DWI Arrest (Citation) – In this report, a DWI arrest (a.k.a. a DWI citation) is a driver arrested for either DWI or aggravated DWI. New Mexico’s legal limit for presumption of driving while intoxicated (DWI) is 0.08 for non-commercial drivers older than 21 years of age, 0.04 for commercial vehicle drivers, and 0.02 for drivers younger than 21 years of age.

DWI Conviction – A driver convicted of driving under the intoxicating influence of alcohol, narcotics, or pathogenic drugs, including aggravated DWI.

Fatal Crash – A crash in which at least one person was killed. More than one person can be killed in a single fatal crash.

Fatalities – The number of people killed in a crash. The terms “killed” and “deaths” are synonymous with “fatalities.” A fatality is crash-related if it occurs at the time of the crash or if the person(s) involved in the crash dies within 30 days.

Injury Crash – A reported crash in which at least one person was injured. Injury crashes involve at least one suspected serious injury (Class A), suspected minor injury (Class B), or possible injury (Class C). Fatal crashes are not included.

Missing Data – An indication that the applicable field on the UCR form was left blank or contained an invalid code. Starting with crashes that occurred in 2012, improvements in the identification of missing data in the NMDOT crash database led to an increase in the reported amount of missing data.

Pedalcyclist – A person riding a mechanism of transport that is powered solely by pedals (a.k.a. bicyclist).

Pedestrian – A person on foot, walking, running, jogging, hiking, sitting or lying down who is involved in a motor vehicle traffic crash.

Sources

Crash Data – New Mexico Department of Transportation, Traffic Safety Division, Traffic Records Bureau, Traffic Crash Database, as of the report date below. Crash data are compiled using NMDOT Uniform Crash Reports (UCR), submitted by law enforcement agencies in the state, for any incident on a public roadway involving one or more motor vehicles that resulted in death, injury, or at least \$500 in property damage. These reports are processed by the NMDOT Traffic Records Bureau and analyzed by the University of New Mexico, Geospatial and Population Studies, Traffic Research Unit (TRU).

DWI Citation Tracking System (CTS) – New Mexico Taxation and Revenue Department (NM TRD), Motor Vehicle Division (MVD), DWI Citation Tracking System (CTS), as of December 2017. Repeat offenders are identified by the combination of account key, arrest date, and citation number. County data are based upon the county where the arrest took place. City data are based upon the city where the offender resides.

Urban Areas – New Mexico Department of Transportation, Asset Management and Planning, 2010 U.S. Census Urbanized Area Boundaries, NMDOT-Adjusted, and U.S. Census Urban Clusters, August 21, 2013. In crashes before 2013, “urban” was defined as a town or city with a population of at least 2,500 people.

Table 1: Total Crashes and Alcohol-involved Crashes by Crash Severity in Cibola County, 2007-2016

Year	Total Crashes				Alcohol-involved Crashes			
	Fatal	Injury	Property Damage Only	Total	Fatal	Injury	Property Damage Only	Total
2007	13	119	321	453	5	12	17	34
2008	6	146	331	483	5	28	20	53
2009	8	133	361	502	3	26	30	59
2010	8	127	285	420	2	13	11	26
2011	12	118	288	418	5	13	14	32
2012	8	118	298	424	1	20	19	40
2013	12	95	240	347	4	8	10	22
2014	7	97	246	350	1	10	14	25
2015	9	116	287	412	5	17	14	36
2016	14	132	364	510	4	21	20	45

Figure 1: Alcohol-involved Fatal and Injury Crashes Compared with Non-alcohol-involved Fatal and Injury Crashes in Cibola County, 2007-2016

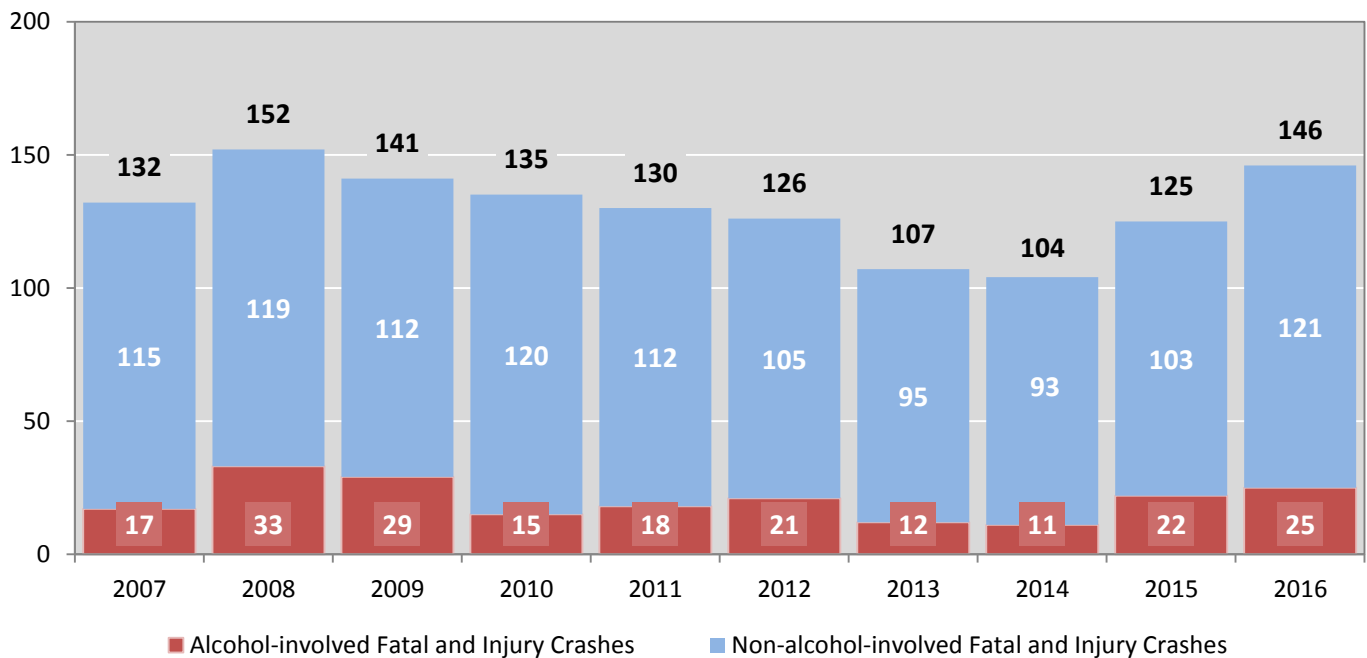


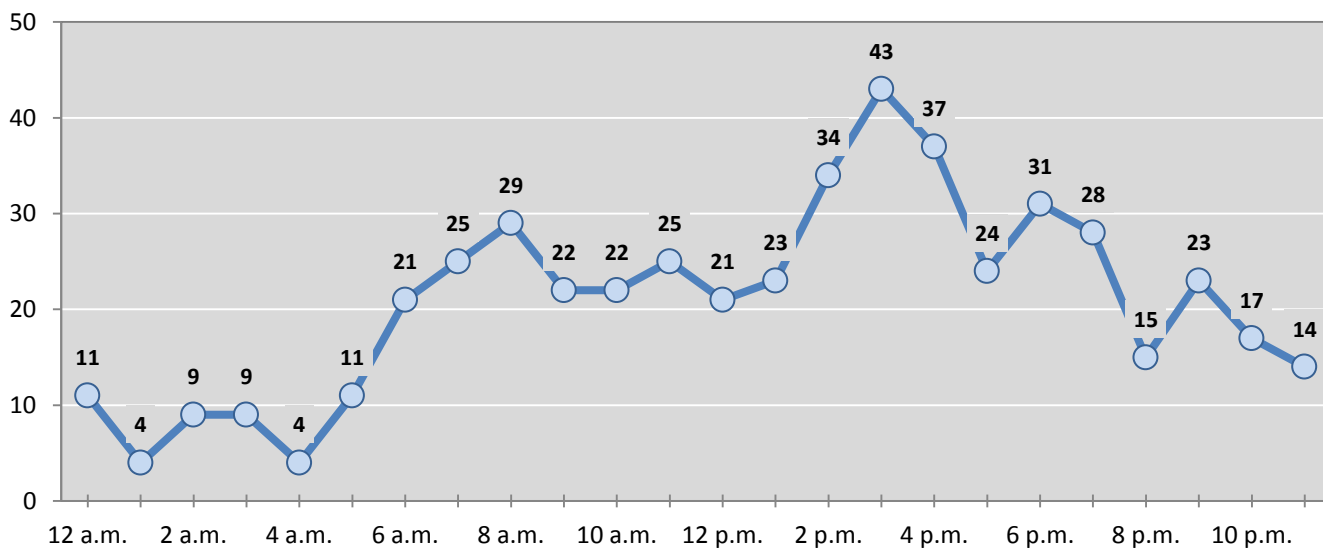
Table 2: Crashes by Month in Cibola County, 2012-2016

Month	Crashes					5-Year Average
	2012	2013	2014	2015	2016	
January	44	26	16	34	48	34
February	34	33	31	33	35	33
March	27	22	28	18	41	27
April	29	19	22	22	35	25
May	45	32	35	26	40	36
June	44	24	32	27	49	35
July	35	40	39	44	56	43
August	25	27	23	38	32	29
September	35	29	27	37	52	36
October	26	27	38	46	47	37
November	40	44	33	34	36	37
December	40	24	26	53	39	36
Total Crashes	424	347	350	412	510	409

Table 3: Alcohol-involved Crashes by Month in Cibola County, 2012-2016

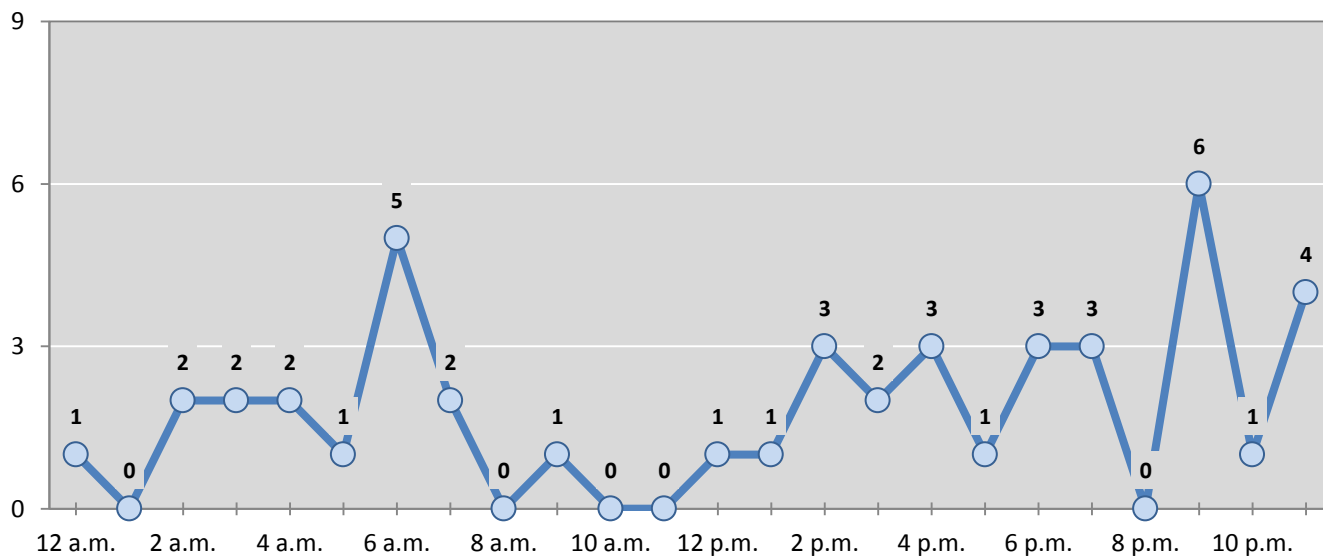
Month	Alcohol-involved Crashes					5-Year Average
	2012	2013	2014	2015	2016	
January	2	1	3	3	2	2
February	2	4	1	1	4	2
March	3	1	2	2	2	2
April	4	2	3	4	5	4
May	2	1	2	2	4	2
June	3	1	1	4	3	2
July	3	4	3	4	6	4
August	3	1	0	0	4	2
September	3	1	4	3	6	3
October	4	3	3	8	2	4
November	4	1	2	3	5	3
December	7	2	1	2	2	3
Total Crashes	40	22	25	36	45	34

Figure 2: Crashes by Hour in Cibola County, 2016



* In 2016, Cibola County had 8 crashes for which hour data were missing.

Figure 3: Alcohol-involved Crashes by Hour in Cibola County, 2016



* In 2016, Cibola County had 1 alcohol-involved crashes for which hour data were missing.

Table 4: Alcohol-involved Crashes by Day of Week in Cibola County, 2012-2016

Day of Week	Alcohol-involved Crashes					5-Year Average
	2012	2013	2014	2015	2016	
Sunday	8	5	3	5	7	6
Monday	6	5	5	4	2	4
Tuesday	5	2	3	3	7	4
Wednesday	3	1	3	5	4	3
Thursday	1	1	4	5	3	3
Friday	6	1	3	9	13	6
Saturday	11	7	4	5	9	7
Total Crashes	40	22	25	36	45	34

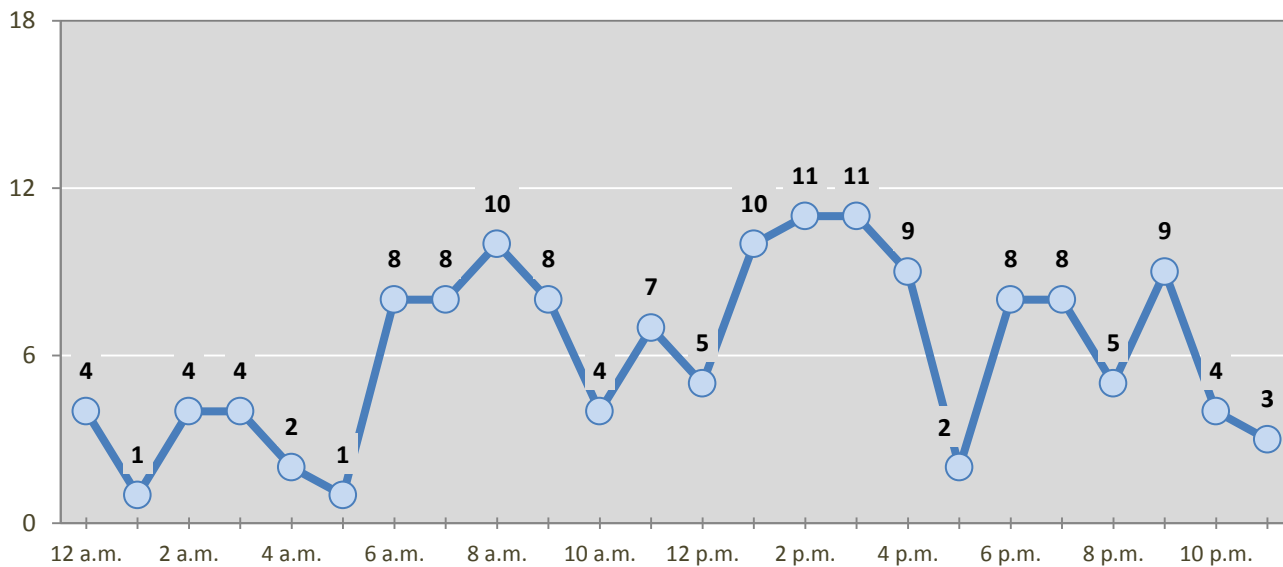
Table 5: Fatal and Injury Crashes by Day of Week in Cibola County, 2012-2016

Day of Week	Fatal and Injury Crashes					5-Year Average
	2012	2013	2014	2015	2016	
Sunday	18	15	8	11	27	16
Monday	17	11	19	10	13	14
Tuesday	14	7	8	18	17	13
Wednesday	15	18	20	18	24	19
Thursday	25	17	11	18	16	17
Friday	15	15	19	30	30	22
Saturday	22	24	19	20	19	21
Total Crashes	126	107	104	125	146	122

Table 6: Pedestrian and Pedalcyclist Crashes by Day of Week in Cibola County, 2012-2016

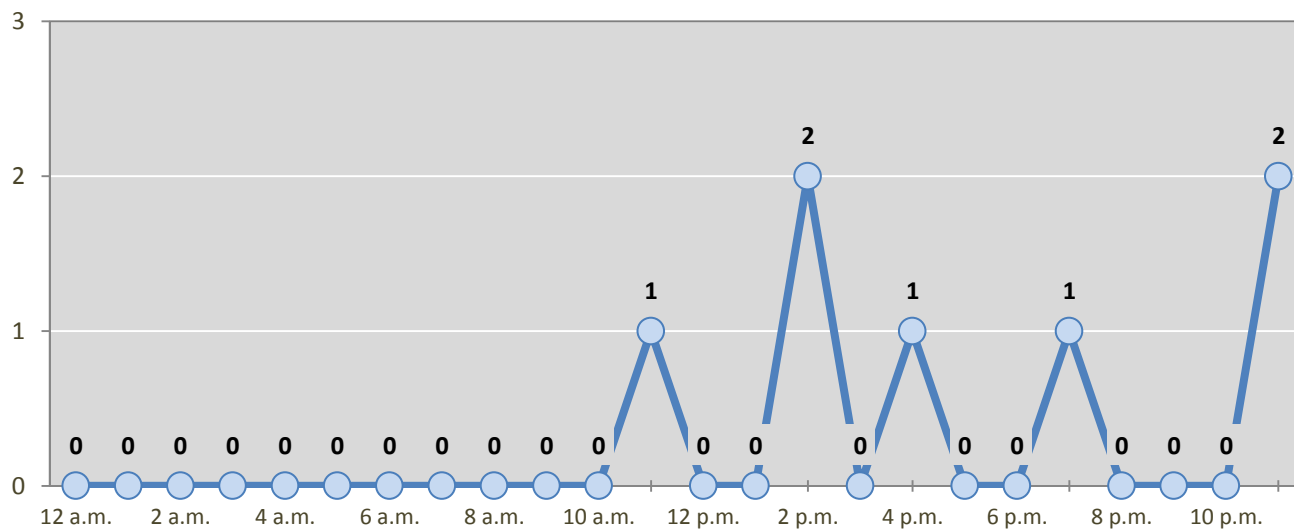
Day of Week	Pedestrian and Pedalcyclist Crashes					5-Year Average
	2012	2013	2014	2015	2016	
Sunday	0	0	0	0	1	0
Monday	0	0	2	0	0	0
Tuesday	0	2	0	1	1	1
Wednesday	0	0	0	0	4	1
Thursday	1	0	0	0	1	0
Friday	1	1	0	2	0	1
Saturday	1	0	0	1	0	0
Total Crashes	3	3	2	4	7	4

Figure 4: Fatal and Injury Crashes by Hour in Cibola County, 2016



* In 2016, Cibola County had 0 crashes for which hour data were missing.

Figure 5: Pedestrian and Pedalcyclist Crashes by Hour in Cibola County, 2016



* In 2016, Cibola County had 0 crashes for which hour data were missing.

Table 7: Severity of Injuries to People in Crashes by Rural and Urban Location in Cibola County, 2016

Urban and Rural Locations by Alcohol-involvement	People in Crashes by Severity of Injuries					Total People
	Fatalities (Class K)	Suspected Serious Injuries (Class A)	Suspected Minor Injuries (Class B)	Possible Injuries (Class C)	No Apparent Injuries (Class O)	
People in Alcohol-involved Crashes	5	3	14	21	57	100
Urban	0	0	3	2	18	23
Rural Non-Interstate	3	3	10	16	23	55
Rural Interstate	2	0	1	3	16	22
People in Crashes	17	17	78	98	922	1,132
Urban	3	5	14	27	345	394
Rural Non-Interstate	6	5	42	36	288	377
Rural Interstate	8	7	22	35	289	361
Percent in Alcohol-involved Crashes	29%	18%	18%	21%	6%	9%

Table 8: Total Crashes by Roadway System and Crash Severity in Cibola County, 2012-2016

Crash Severity by System	Crashes by Year					5-Year Average
	2012	2013	2014	2015	2016	
Total Rural Interstate	132	103	91	128	156	122
Fatal Crash	6	7	6	4	7	6
Injury Crash	47	25	32	39	46	38
Property Damage Only Crash	79	71	53	85	103	78
Total Rural Non-Interstate	103	78	103	99	191	115
Fatal Crash	2	3	0	4	5	3
Injury Crash	32	28	28	32	51	34
Property Damage Only Crash	69	47	75	63	135	78
Total Urban	189	166	156	185	163	172
Fatal Crash	0	2	1	1	2	1
Injury Crash	39	42	37	45	35	40
Property Damage Only Crash	150	122	118	139	126	131

Table 9: Total Crashes by Crash Classification in Cibola County, 2012-2016

Crash Classification	Total Crashes by Year					5-Year Average
	2012	2013	2014	2015	2016	
Animal	27	20	26	23	61	31
Fixed Object	75	46	50	72	100	69
Other (Non-Collision)	13	18	11	18	25	17
Other (Object)	20	18	15	22	14	18
Other Vehicle	171	161	161	183	202	176
Overturn/Rollover	77	50	47	23	54	50
Parked Vehicle	21	13	27	19	21	20
Pedalcyclist	2	0	0	1	2	1
Pedestrian	2	3	1	3	5	3
Railroad Train	2	1	1	0	0	1
Rollover	0	0	0	39	20	12
Vehicle on Other Road	5	3	6	3	3	4
Missing Data	9	14	5	6	3	7
Total Crashes	424	347	350	412	510	409

Table 10: Vehicles in Crashes by Vehicle Type in Cibola County, 2012-2016

Vehicle Type ¹	Vehicles in Crashes by Vehicle Type					5-Year Average
	2012	2013	2014	2015	2016	
Bus	3	3	2	1	2	2
Motorcycle	11	17	15	15	17	15
Passenger	243	218	184	238	301	237
Pedalcyclist	2	0	0	1	2	1
Pedestrian	1	3	2	3	5	3
Pickup	159	109	116	150	166	140
Semi	67	57	58	69	79	66
Van/SUV/4WD	99	90	93	101	147	106
Other Vehicle	6	5	2	19	2	7
Missing Data	47	45	82	45	52	54
Total Vehicles	638	547	554	642	773	631

¹ Pedestrians and pedalcyclists are counted as non-motorized vehicles, when involved in a crash with a motor vehicle. See Page 17 for data on drivers of non-motorized vehicles in crashes (i.e. pedestrians and pedalcyclists).

Table 11: Motor Vehicle Drivers in Crashes by Vehicle Type and Age Group in Cibola County, 2016

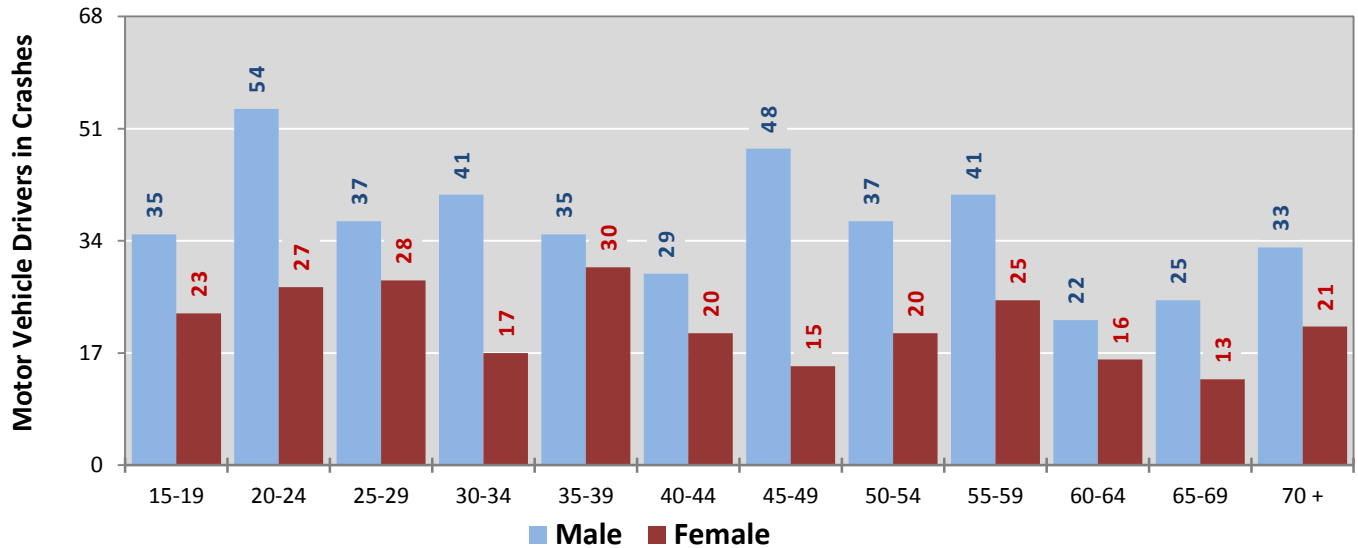
Age Groups	Motor Vehicle ¹ Drivers by Vehicle Type and Age Group								Total Drivers
	Bus	Motor-cycle	Passenger	Pickup	Semi	Van 4WD SUV	Other Vehicle	Missing Data	
15-19	0	0	36	10	1	9	0	2	58
20-24	0	0	42	20	6	12	0	1	81
25-29	0	1	35	7	2	18	0	2	65
30-34	0	3	22	12	6	12	0	3	58
35-39	0	2	24	10	9	17	1	2	65
40-44	0	2	20	9	5	13	0	0	49
45-49	0	1	11	20	16	14	0	1	63
50-54	1	1	19	12	17	5	0	2	57
55-59	1	2	17	18	13	12	1	2	66
60-64	0	0	17	13	2	6	0	0	38
65-69	0	3	10	13	2	10	0	0	38
70 +	0	2	30	10	0	12	0	0	54
Missing Data	0	0	18	12	0	7	0	37	74
Total Drivers	2	17	301	166	79	147	2	52	766

Table 12: Alcohol-involved Motor Vehicle Drivers in Crashes by Vehicle Type and Age Group in Cibola County, 2016

Age Groups	Alcohol-involved Motor Vehicle ¹ Drivers by Vehicle Type and Age Group								Total Drivers
	Bus	Motor-cycle	Passenger	Pickup	Semi	Van 4WD SUV	Other Vehicle	Missing Data	
15-19	0	0	2	0	0	1	0	0	3
20-24	0	0	5	2	0	0	0	0	7
25-29	0	0	1	1	0	1	0	0	3
30-34	0	1	2	3	0	0	0	1	7
35-39	0	0	3	2	0	3	0	0	8
40-44	0	0	1	1	0	1	0	0	3
45-49	0	0	2	1	0	2	0	0	5
50-54	0	0	1	2	0	0	0	0	3
55-59	0	0	2	1	0	1	0	0	4
60-64	0	0	0	1	0	0	0	0	1
65-69	0	0	1	1	0	0	0	0	2
70 +	0	0	0	0	0	0	0	0	0
Missing Data	0	0	0	0	0	0	0	0	0
Total Drivers	0	1	20	15	0	9	0	1	46

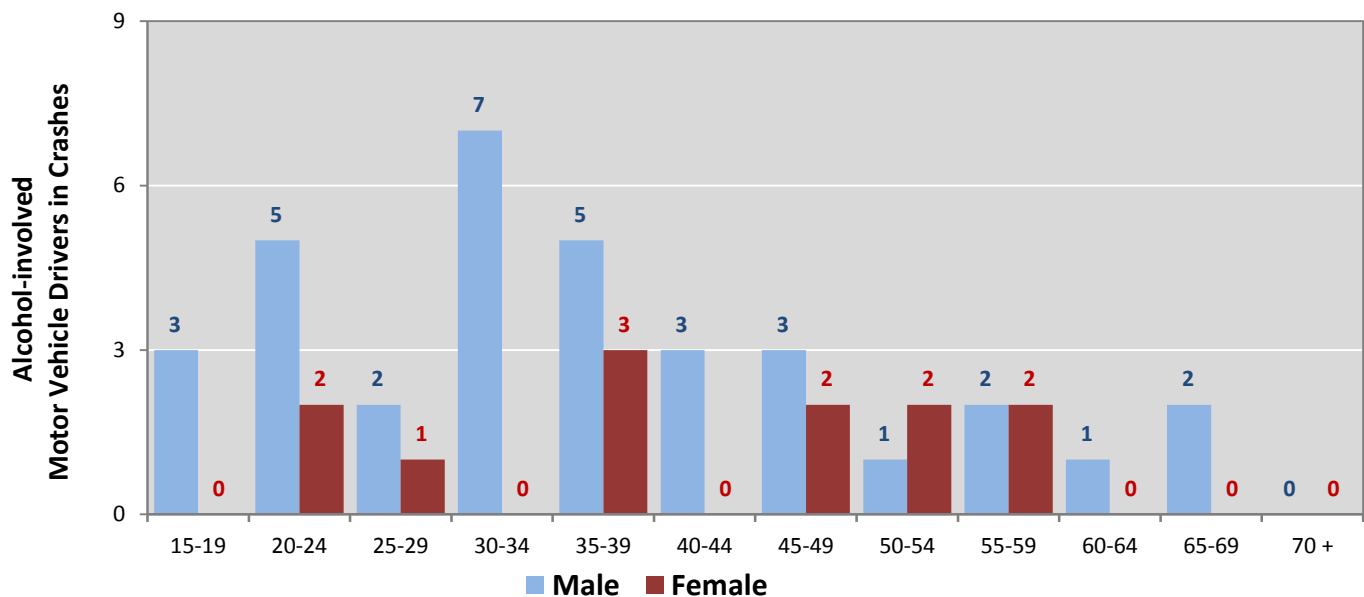
¹ See Page 17 for data on drivers of non-motorized vehicles in crashes (i.e. pedestrians and pedalcyclists).

Figure 6: Motor Vehicle Drivers in Crashes by Age Group and Sex in Cibola County, 2016



* In 2016, Cibola County had 74 drivers in crashes for which age or sex data were missing.

Figure 7: Alcohol-involved Motor Vehicle Drivers in Crashes by Age Group and Sex in Cibola County, 2016



* In 2016, Cibola County had 0 drivers in crashes for which age or sex data were missing.

Table 13: Alcohol-involved Motor Vehicle Drivers Under 21 (Ages 15-20) in Crashes in Cibola County, 2012-2016

Age ¹	Year					5-Year Total
	2012	2013	2014	2015	2016	
15	0	0	0	0	0	0
16	0	0	1	0	1	2
17	1	0	0	1	0	2
18	1	0	0	1	1	3
19	1	1	0	3	1	6
20	1	1	1	0	2	5
Total Drivers	4	2	2	5	5	18

Table 14: Motor Vehicle Drivers Under 21 (Ages 15-20) in Crashes by Age, Sex and Alcohol-involvement in Cibola County, 2016

Age ¹	Total Drivers				Alcohol-involved Drivers			
	Sex		Total Drivers	Percent of Total	Sex		Total Drivers	Percent of Total
	Male	Female			Male	Female		
15	3	1	4	6%	0	0	0	0%
16	3	4	7	10%	1	0	1	20%
17	5	7	12	17%	0	0	0	0%
18	17	4	21	29%	1	0	1	20%
19	7	7	14	19%	1	0	1	20%
20	11	3	14	19%	2	0	2	40%
Total Drivers	46	26	72	100%	5	0	5	100%

¹ For analysis of drivers under age 21, when the driver age or sex are not identified on the crash report (typically hit-and-run drivers), the driver data are considered unreliable and are excluded from the analysis.

**Table 15: Frequency of Contributing Factors in Crashes
by Crash Severity in Cibola County, 2016**

Contributing Factors	Frequency of Contributing Factor ¹ by Crash Severity			
	Frequency in Fatal Crashes	Frequency in Injury Crashes	Frequency in Property Damage Only Crashes	Frequency in All Crashes
Human	25	208	458	691
Driver Inattention	10	68	160	238
Other Improper Driving	1	18	35	54
Excessive Speed	2	16	35	53
Speed Too Fast for Conditions	0	26	26	52
Alcohol Involved	3	23	20	46
Failed to Yield Right of Way	0	15	30	45
Avoid No Contact - Vehicle	0	5	24	29
Improper Backing	0	3	26	29
Made Improper Turn	2	6	15	23
Following Too Closely	0	6	16	22
Drove Left Of Center	4	7	8	19
Improper Overtaking	1	1	14	16
Improper Lane Change	1	0	13	14
Avoid No Contact - Other	0	2	7	9
Disregarded Traffic Signal	0	1	8	9
Drug Involved	0	5	4	9
Passed Stop Sign	0	2	5	7
Vehicle Skidded Before Brake	1	1	4	6
High Speed Pursuit	0	1	2	3
Cell Phone	0	0	2	2
Failed to Yield to Emergency Vehicle	0	0	2	2
Pedestrian Error	0	2	0	2
Driverless Moving Vehicle	0	0	1	1
Failed to Yield to Police Vehicle	0	0	1	1
Texting	0	0	0	0
Vehicle	0	12	24	36
Other Mechanical Defect	0	5	12	17
Defective Tires	0	7	8	15
Defective Steering	0	0	3	3
Inadequate Brakes	0	0	1	1
Environment	0	1	5	6
Road Defect	0	1	5	6
Low Visibility Due to Smoke	0	0	0	0
Traffic Control Not Functioning	0	0	0	0
Other	5	66	262	333
None	4	41	154	199
Other - No Driver Error	1	25	108	134

¹ Multiple contributing factors may be reported for any vehicle in a crash.

Table 16: People in Crashes by Crash Classification and Severity of Injuries in Cibola County, 2016

Crash Classification	People in Crashes by Severity of Injuries					Total People
	Fatalities (Class K)	Suspected Serious Injuries (Class A)	Suspected Minor Injuries (Class B)	Possible Injuries (Class C)	No Apparent Injuries (Class O)	
Animal	0	0	13	6	95	114
Fixed Object	1	3	15	15	118	152
Other (Non-Collision)	0	1	2	2	35	40
Other (Object)	0	0	0	1	33	34
Other Vehicle	6	8	16	43	513	586
Overturn/Rollover	2	1	21	20	45	89
Parked Vehicle	0	0	0	0	48	48
Pedalcyclist	0	0	1	1	3	5
Pedestrian	1	0	2	2	6	11
Railroad Train	0	0	0	0	0	0
Rollover	7	4	8	7	14	40
Vehicle on Other Road	0	0	0	1	6	7
Missing Data	0	0	0	0	6	6
Total People	17	17	78	98	922	1,132

**Table 17: Killed or Injured Unbelted People in Crashes
by Sex and Age Group in Cibola County, 2016**

Age Groups	Unbelted People Killed or Injured ^{1,2}				Total People
	Male	Percent of Male	Female	Percent of Female	
0-4	0	0%	0	0%	0
5-9	0	0%	0	0%	0
10-14	1	11%	0	0%	1
15-19	1	11%	1	13%	2
20-24	1	11%	3	38%	4
25-29	1	11%	2	25%	3
30-34	2	22%	1	13%	3
35-39	1	11%	0	0%	1
40-44	1	11%	0	0%	1
45-49	0	0%	0	0%	0
50-54	0	0%	0	0%	0
55-59	0	0%	0	0%	0
60-64	0	0%	0	0%	0
65-69	1	11%	0	0%	1
70 +	0	0%	1	13%	1
Missing Data	0	0%	0	0%	0
Total People	9	100%	8	100%	17

¹ People injured are in one of three categories: suspected serious injury, suspected minor injury, or possible injury.

² Excludes people in or on buses, heavy trucks, motorcycles, or ATVs.

**Figure 8: Seatbelt Use by People in Crashes with Fatal or
Suspected Serious Injuries in Cibola County, 2012-2016**

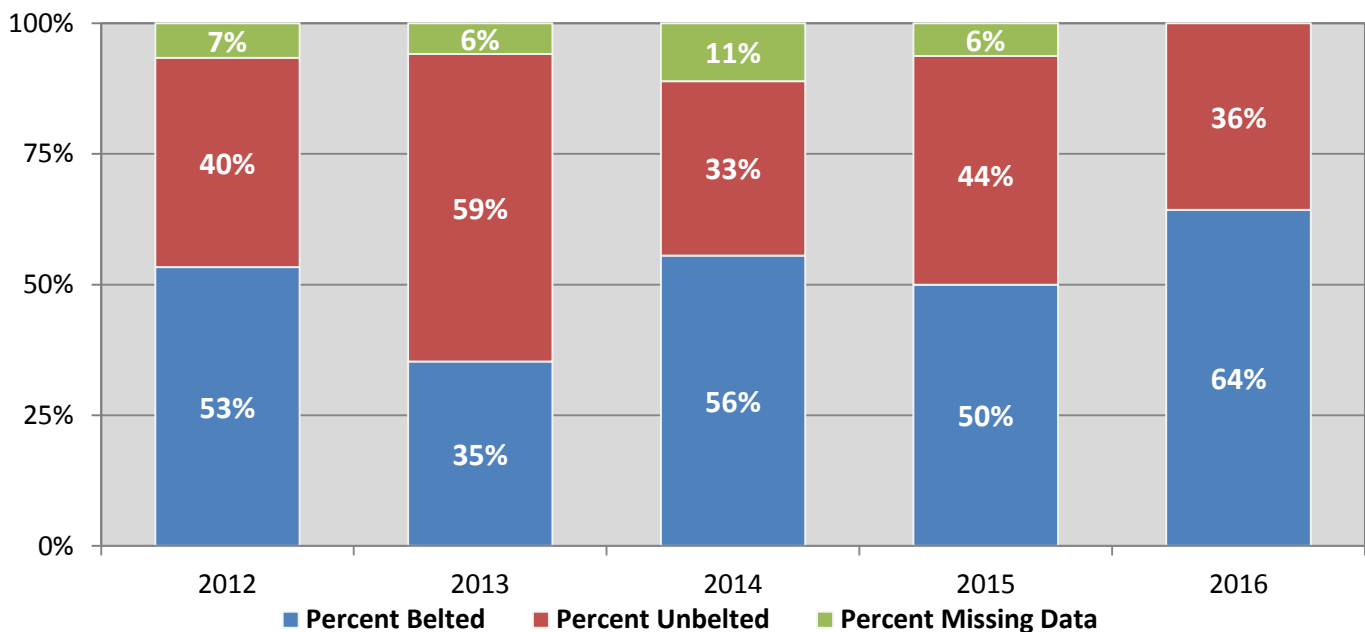
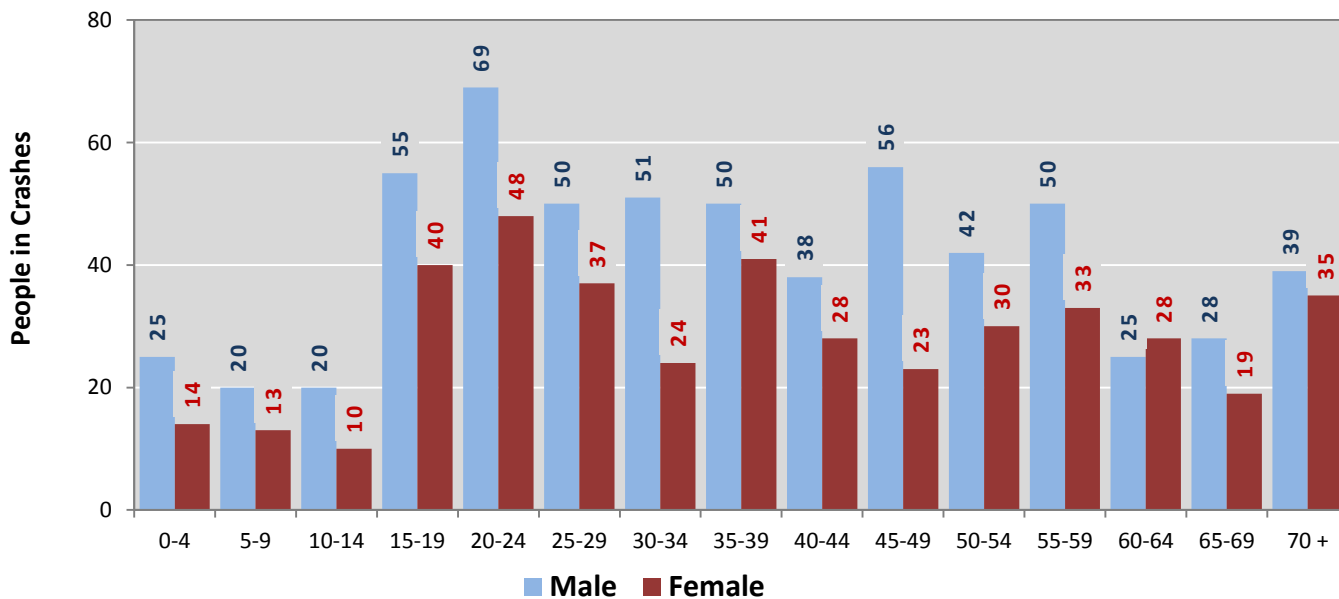
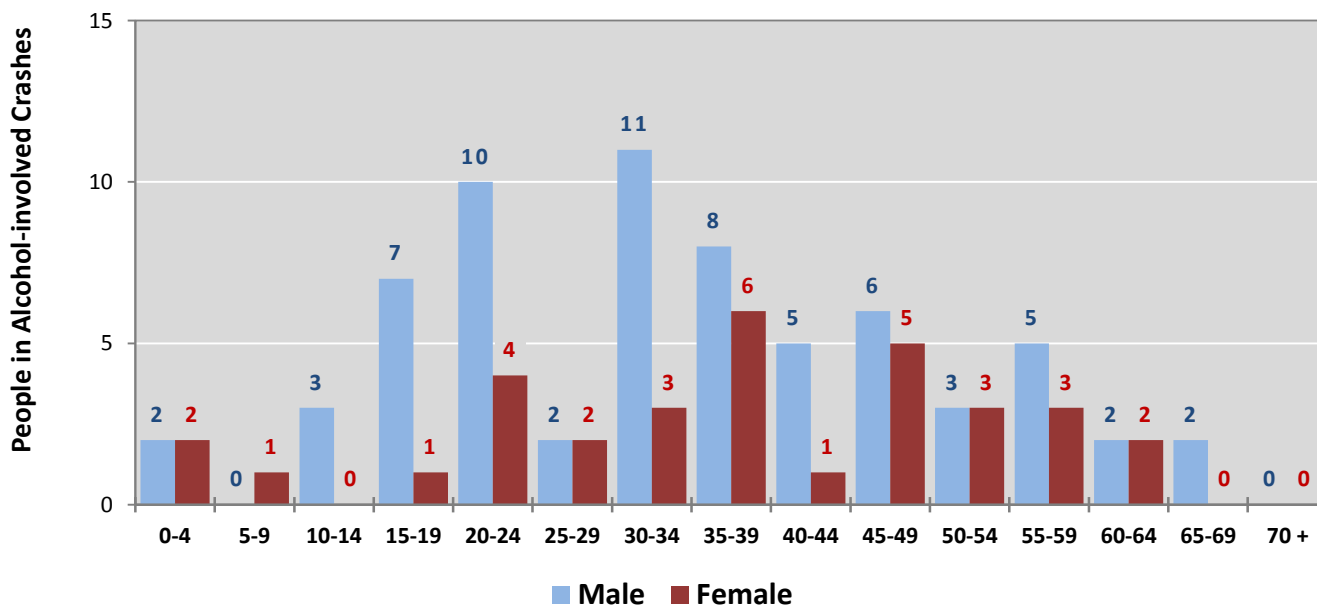


Figure 9: People in Crashes by Age Group and Sex in Cibola County, 2016



* In 2016, Cibola County had 91 people in crashes for which age or sex data were missing.

Figure 10: People in Alcohol-involved Crashes by Age Group and Sex in Cibola County, 2016



* In 2016, Cibola County had 1 people in alcohol-involved crashes for which age or sex data were missing.

Table 18: Pedestrians and Pedalcyclists in Crashes by Age Group in Cibola County, 2012-2016

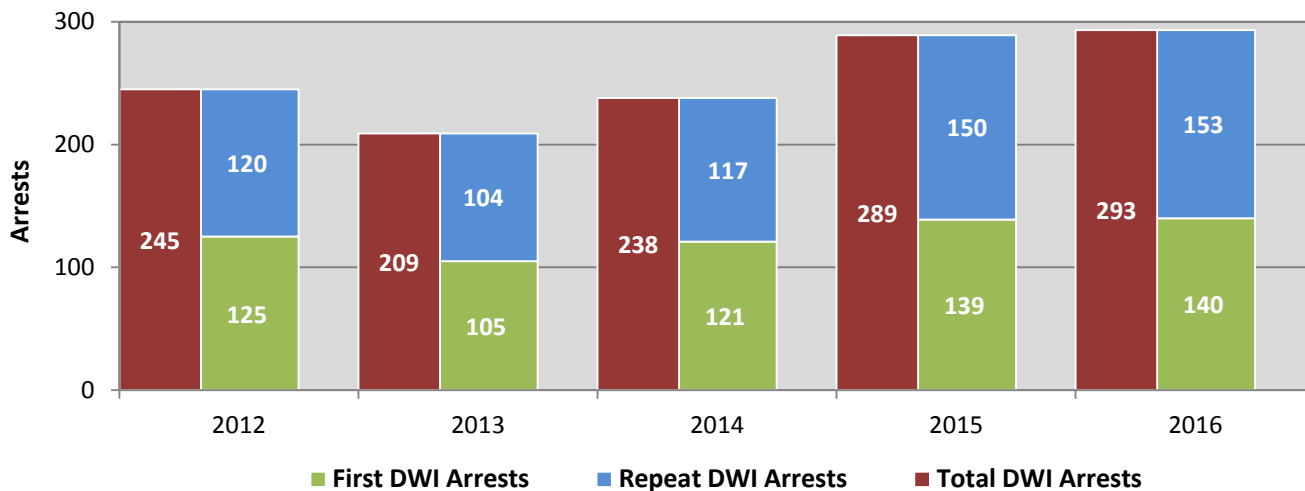
Age Groups	Pedestrians and Pedalcyclists ¹ in Crashes					5-Year Total People
	2012	2013	2014	2015	2016	
0-4	0	0	0	0	0	0
5-9	0	0	0	0	0	0
10-14	0	0	0	0	2	2
15-19	0	0	0	0	0	0
20-24	0	0	0	0	0	0
25-29	0	0	0	1	1	2
30-34	1	0	0	0	1	2
35-39	0	1	1	0	1	3
40-44	0	1	1	0	0	2
45-49	0	0	0	0	0	0
50-54	0	1	0	0	2	3
55-59	0	0	0	1	0	1
60-64	0	0	0	1	0	1
65-69	1	0	0	1	0	2
70 +	0	0	0	0	0	0
Missing Data	1	0	0	0	0	1
Total People	3	3	2	4	7	19

Table 19: Pedestrians and Pedalcyclists in Crashes by Alcohol Involvement and Severity of Injuries in Cibola County, 2016

Alcohol Involvement	Pedestrians and Pedalcyclists ¹ in Crashes					Total People
	Fatalities (Class K)	Suspected Serious Injuries (Class A)	Suspected Minor Injuries (Class B)	Possible Injuries (Class C)	No Apparent Injury (Class O)	
Total Pedalcyclists	0	0	1	1	0	2
Involved	0	0	0	0	0	0
Not Involved	0	0	1	1	0	2
Total Pedestrians	1	0	2	2	0	5
Involved	1	0	0	0	0	1
Not Involved	0	0	2	2	0	4
Total People	1	0	3	3	0	7

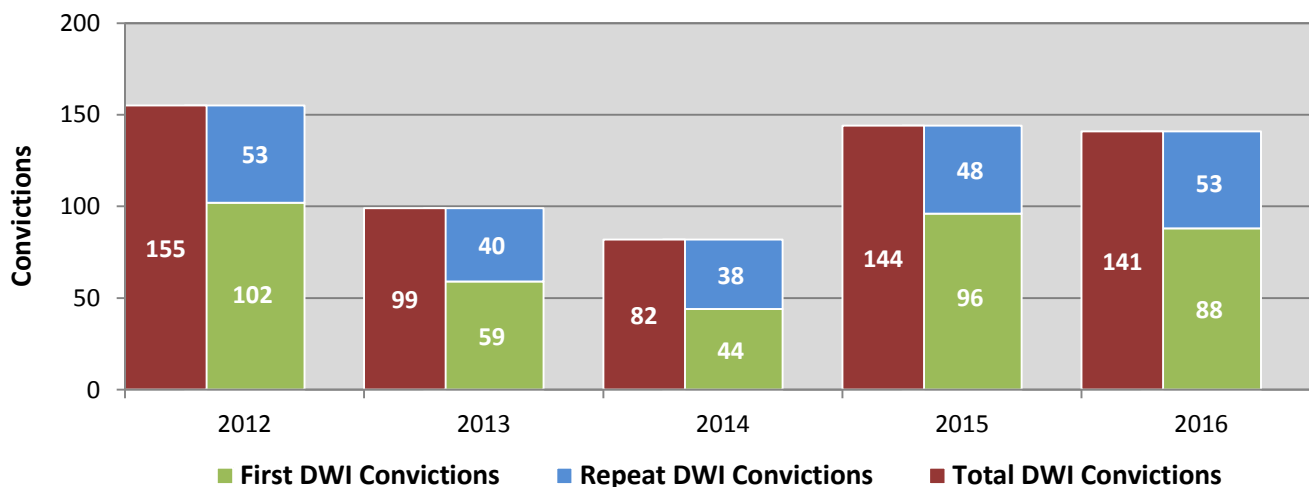
¹ Pedestrians and pedalcyclists are counted as non-motorized vehicles, when involved in a crash with a motor vehicle.

**Figure 11: DWI Arrests in Cibola County,
Showing First and Repeat DWI Arrests, 2012-2016**



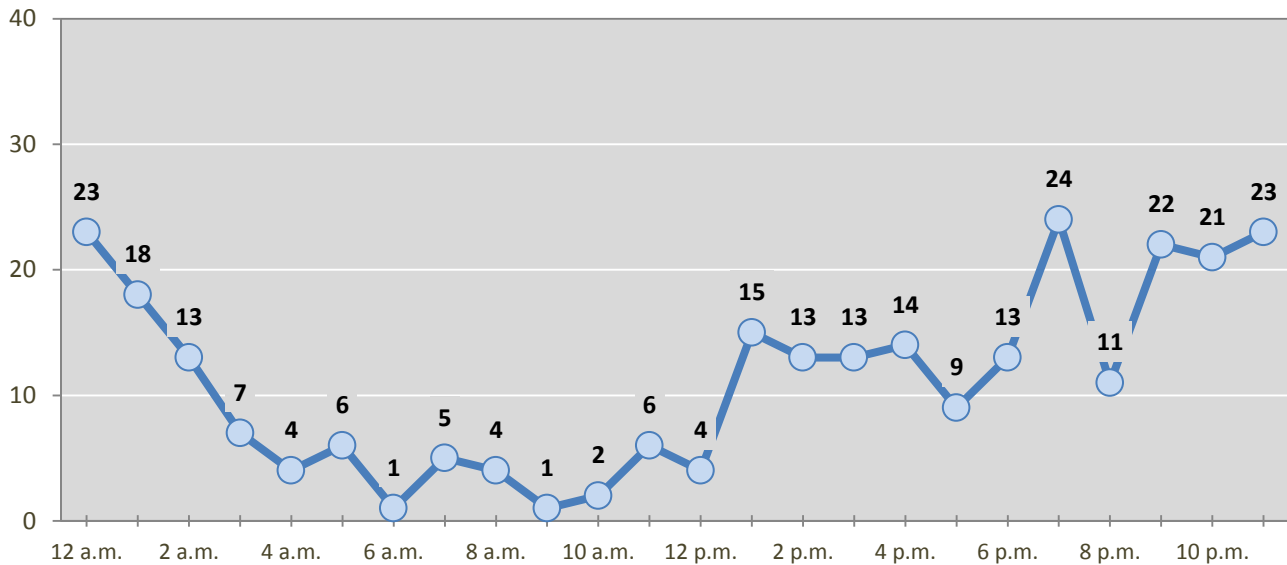
*Values are based upon the year of the arrest.

**Figure 12: DWI Convictions in Cibola County,
Showing First and Repeat DWI Convictions, 2012-2016**



*Values are based upon the year of the conviction.

Figure 13: DWI Arrests by Hour in Cibola County, 2016



* In 2016, Cibola County had 21 arrests for which hour data were missing.

Table 20: DWI Arrests by Day of Week in Cibola County, 2012-2016

Day of Week	Year					5-Year Average
	2012	2013	2014	2015	2016	
Sunday	65	47	47	52	45	51
Monday	18	20	22	28	30	24
Tuesday	18	31	23	20	30	24
Wednesday	19	14	24	29	38	25
Thursday	21	19	33	38	42	31
Friday	37	29	39	52	44	40
Saturday	67	49	50	70	64	60
Total Arrests	245	209	238	289	293	255

Table 21: Driver First DWI Arrests by Age Group in Cibola County, 2012-2016

Age Groups	Driver First DWI Arrests ¹				
	2012	2013	2014	2015	2016
15-19	12	7	10	13	4
20-24	23	27	27	33	34
25-29	26	19	30	25	31
30-34	19	12	14	17	20
35-39	9	12	16	13	15
40-44	10	7	10	13	11
45-49	11	7	3	9	4
50-54	8	2	6	8	13
55-59	3	9	2	2	3
60-64	2	3	1	1	0
65-69	0	0	0	3	1
70 +	0	0	1	0	0
Missing Data	2	0	1	2	4
Total Drivers	125	105	121	139	140

¹ Values are based upon the year of the arrest.

Table 22: Driver Repeat DWI Arrests by Age Group in Cibola County, 2012-2016

Age Groups	Driver Repeat DWI Arrests ¹				
	2012	2013	2014	2015	2016
15-19	0	1	2	2	0
20-24	8	6	9	7	15
25-29	24	12	16	29	20
30-34	19	22	21	21	22
35-39	15	20	22	29	27
40-44	17	7	12	13	22
45-49	15	9	15	16	16
50-54	9	13	8	21	16
55-59	8	7	7	6	6
60-64	3	5	2	4	6
65-69	1	1	3	1	3
70 +	0	1	0	0	0
Missing Data	1	0	0	1	0
Total Drivers	120	104	117	150	153

¹ Values are based upon the year of the arrest.

Table 23: Driver First DWI Convictions by Age Group in Cibola County, 2012-2016

Age Groups	Driver First DWI Convictions ¹				
	2012	2013	2014	2015	2016
15-19	8	7	1	7	5
20-24	27	14	15	28	27
25-29	19	13	8	21	18
30-34	15	6	6	13	10
35-39	8	7	6	7	9
40-44	9	4	2	4	6
45-49	4	4	1	8	2
50-54	4	2	2	5	7
55-59	3	2	1	3	0
60-64	1	0	1	0	1
65-69	2	0	0	0	1
70 +	0	0	0	0	0
Missing Data	2	0	1	0	2
Total Drivers	102	59	44	96	88

¹ Values are based upon the year of the conviction.

Table 24: Driver Repeat DWI Convictions by Age Group in Cibola County, 2012-2016

Age Groups	Driver Repeat DWI Convictions ¹				
	2012	2013	2014	2015	2016
15-19	0	0	0	1	0
20-24	3	2	3	1	2
25-29	11	6	7	6	7
30-34	10	7	3	6	5
35-39	5	3	4	12	13
40-44	8	9	9	4	7
45-49	6	6	3	6	6
50-54	6	4	7	5	8
55-59	3	1	1	4	2
60-64	1	2	0	1	3
65-69	0	0	1	2	0
70 +	0	0	0	0	0
Missing Data	0	0	0	0	0
Total Drivers	53	40	38	48	53

¹ Values are based upon the year of the conviction.

Table 25: Court Disposition of DWI Arrests for Cibola County and the State, 2016

Court Disposition of DWI Arrest ¹	Cibola County	Statewide	Percent of Statewide
Total DWI Arrests	293	10,344	2.8%
DWI Arrests Resulting in Convictions	139	5,541	2.5%
DWI Arrests Resulting in Dismissals ²	13	1,512	0.9%
DWI Arrests Awaiting Disposition	141	3,291	4.3%

¹ These are the number of DWI arrests in 2016 and whether the case resulted in a conviction or dismissal, or is still awaiting court disposition, as reported in the NM MVD Citation Tracking System (CTS) as of December 2017.

² For this table, a very small number of "not guilty" rulings may be included in the category Dismissals.

Table 26: Average Number of Days from Date of DWI Arrest to Date of Court Disposition in Cibola County and the State, 2016

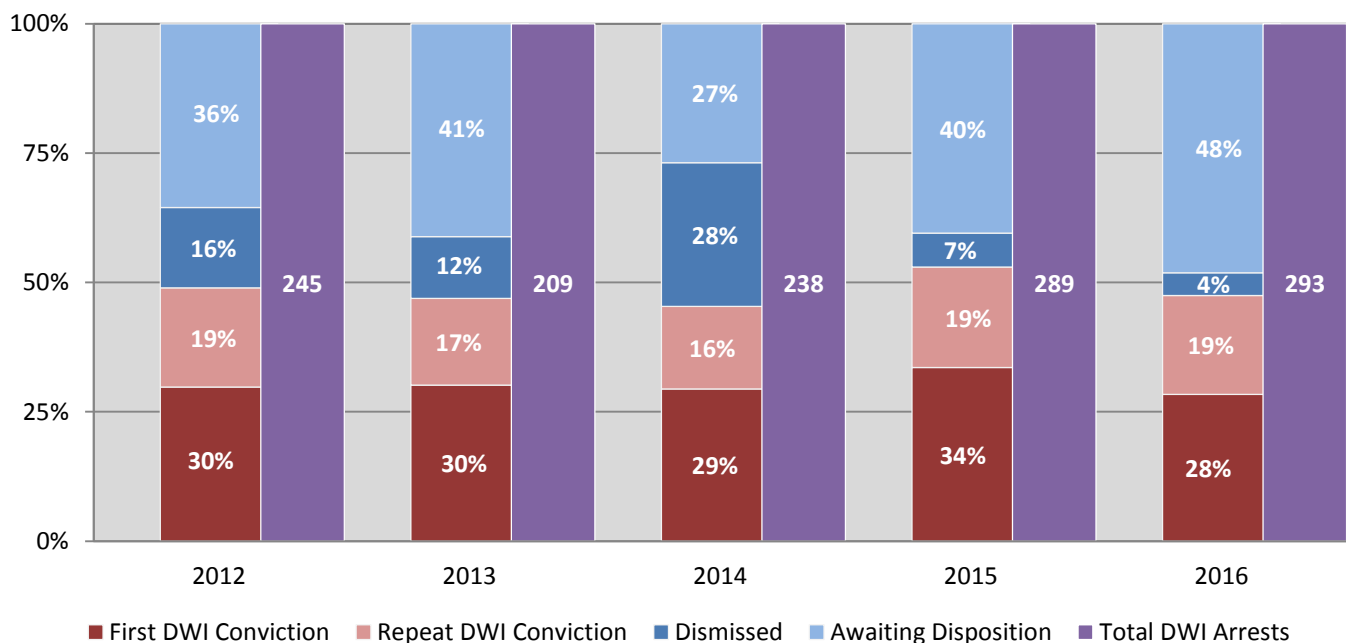
Court Disposition	Average Number of Days		Deviation from Statewide Average
	Cibola County	Statewide	
DWI Conviction	208	157	51
DWI Dismissal	161	179	-18

Table 27: Court Disposition of DWI Arrests in Cibola County, 2012-2016

Year of DWI Arrest ¹	Court Disposition				Total DWI Arrests
	First DWI Conviction	Repeat DWI Conviction	Dismissed	Awaiting Disposition	
2012	73	47	38	87	245
2013	63	35	25	86	209
2014	70	38	66	64	238
2015	97	56	19	117	289
2016	83	56	13	141	293

¹ Values are based upon the year of the arrest.

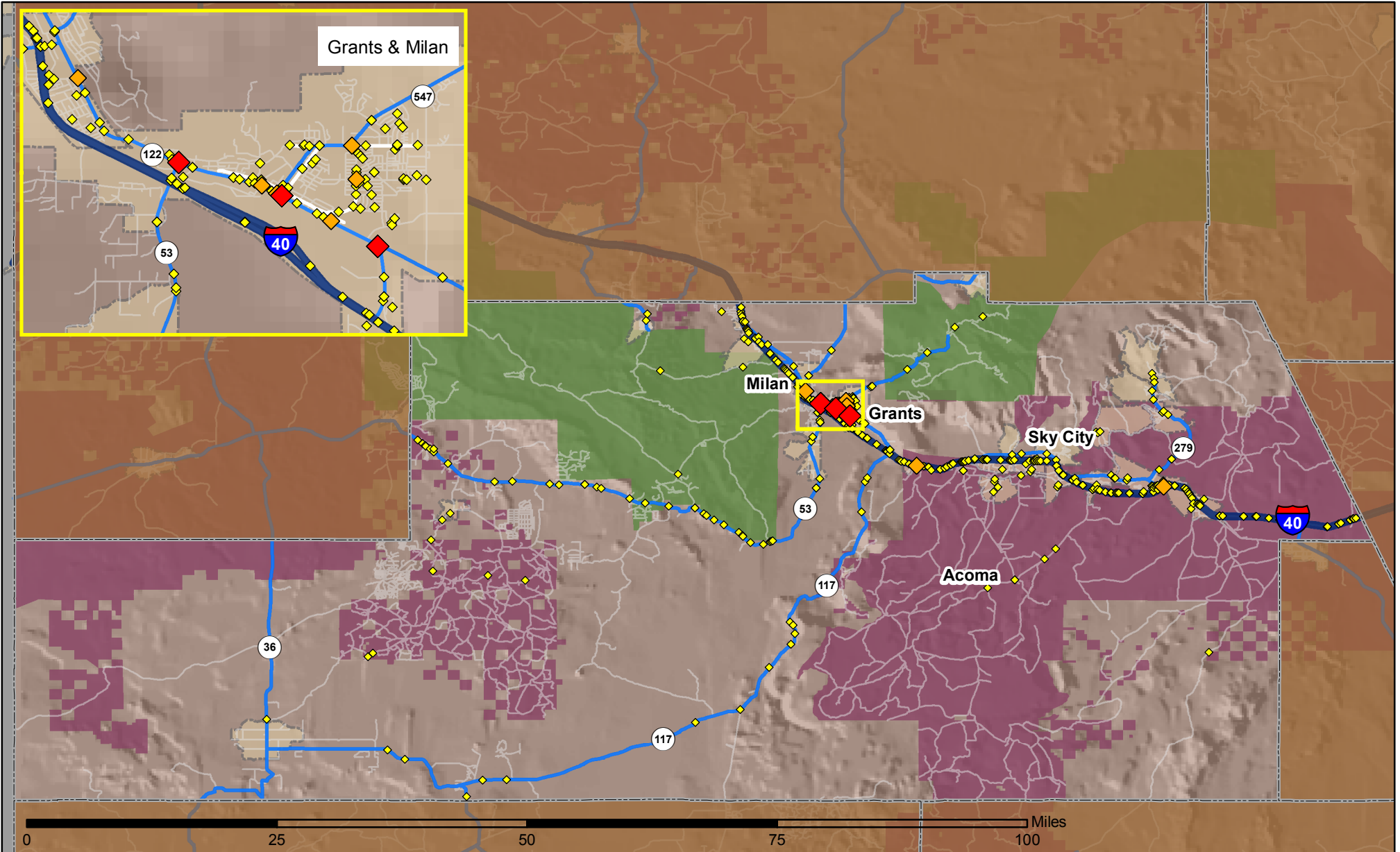
Figure 14: Court Dispositions by Percentage of DWI Arrests in Cibola County, 2012-2016



*Table 27 contains the values used to calculate percentages shown in Figure 14.

Crashes in Cibola County, New Mexico, 2016

Map created by the Traffic Research Unit, Geospatial & Population Studies at UNM



Legend

Data Source: NMDOT Crash File 2016
<http://tru.unm.edu> CO#5801 tru@unm.edu

- Forest & Wildlife Areas
- Reservations & Pueblos
- County Boundaries
- City Boundaries

- Interstate Highways
- U.S. Highways
- State Highways
- Streets & Roadways

Crashes 2016

- 1 - 2 Crashes
- 3 - 5 Crashes
- 6 - 9 Crashes