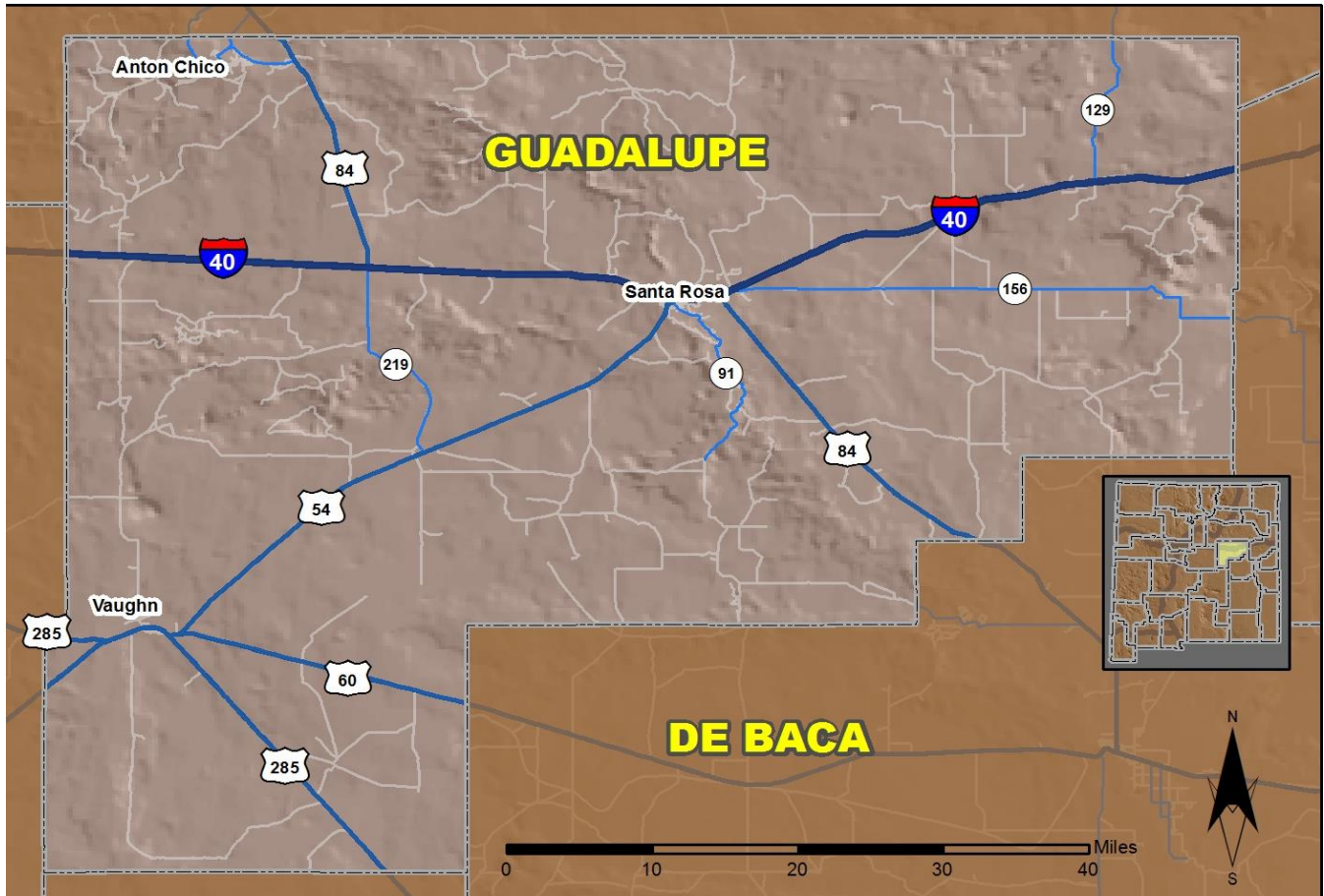


2016 Community Report

Guadalupe County



Produced for the New Mexico Department of Transportation,
Traffic Safety Division, Traffic Records Bureau,
Under Contract 5801 by the University of New Mexico,
Geospatial and Population Studies, Traffic Research Unit

Distributed in compliance with New Mexico Statute 66-7-214
as a reference source regarding New Mexico traffic crashes

For the purposes of this report, data are compiled by the University of New Mexico, Geospatial and Population Studies, Traffic Research Unit (TRU), on behalf of the New Mexico Department of Transportation (NMDOT). Data in this report may differ from that in other data sources, such as the Federal Fatality Analysis Reporting System (FARS), due to the timing of publications and rules for how data are compiled and maintained in Federal vs. State databases. If you have questions regarding this report, please contact the Traffic Safety Division at 505-827-0427.

<http://tru.unm.edu/Crash-Reports/Community-Reports/>

Definitions

Aggravated DWI – A driver arrested for 1) driving with a BAC of 0.16 or higher, 2) driving under the influence of alcohol or drugs and causing bodily injury to a human being as a result, or 3) driving under the influence of alcohol or drugs and refusing to submit to a BAC test at the time of arrest for DWI.

Alcohol-involved Crash – A crash for which the Uniform Crash Report indicated that 1) a DWI citation was issued, 2) alcohol was a contributing factor, or 3) a person in control of a vehicle (including a pedestrian or pedalcyclist) was suspected of being under the influence of alcohol.

Alcohol-involved Driver – A person in control of a vehicle who was cited for DWI or indicated on the Uniform Crash Report as being either suspected or determined by testing to be under the influence of alcohol. There can be multiple alcohol-involved drivers in a single alcohol-involved crash.

Crash – A reported incident on a public roadway involving one or more motor vehicles that resulted in death, personal injury, or at least \$500 in property damage. Crashes on private property (such as a parking lot) are not included.

DWI Arrest (Citation) – In this report, a DWI arrest (a.k.a. a DWI citation) is a driver arrested for either DWI or aggravated DWI. New Mexico’s legal limit for presumption of driving while intoxicated (DWI) is 0.08 for non-commercial drivers older than 21 years of age, 0.04 for commercial vehicle drivers, and 0.02 for drivers younger than 21 years of age.

DWI Conviction – A driver convicted of driving under the intoxicating influence of alcohol, narcotics, or pathogenic drugs, including aggravated DWI.

Fatal Crash – A crash in which at least one person was killed. More than one person can be killed in a single fatal crash.

Fatalities – The number of people killed in a crash. The terms “killed” and “deaths” are synonymous with “fatalities.” A fatality is crash-related if it occurs at the time of the crash or if the person(s) involved in the crash dies within 30 days.

Injury Crash – A reported crash in which at least one person was injured. Injury crashes involve at least one suspected serious injury (Class A), suspected minor injury (Class B), or possible injury (Class C). Fatal crashes are not included.

Missing Data – An indication that the applicable field on the UCR form was left blank or contained an invalid code. Starting with crashes that occurred in 2012, improvements in the identification of missing data in the NMDOT crash database led to an increase in the reported amount of missing data.

Pedalcyclist – A person riding a mechanism of transport that is powered solely by pedals (a.k.a. bicyclist).

Pedestrian – A person on foot, walking, running, jogging, hiking, sitting or lying down who is involved in a motor vehicle traffic crash.

Sources

Crash Data – New Mexico Department of Transportation, Traffic Safety Division, Traffic Records Bureau, Traffic Crash Database, as of the report date below. Crash data are compiled using NMDOT Uniform Crash Reports (UCR), submitted by law enforcement agencies in the state, for any incident on a public roadway involving one or more motor vehicles that resulted in death, injury, or at least \$500 in property damage. These reports are processed by the NMDOT Traffic Records Bureau and analyzed by the University of New Mexico, Geospatial and Population Studies, Traffic Research Unit (TRU).

DWI Citation Tracking System (CTS) – New Mexico Taxation and Revenue Department (NM TRD), Motor Vehicle Division (MVD), DWI Citation Tracking System (CTS), as of December 2017. Repeat offenders are identified by the combination of account key, arrest date, and citation number. County data are based upon the county where the arrest took place. City data are based upon the city where the offender resides.

Urban Areas – New Mexico Department of Transportation, Asset Management and Planning, 2010 U.S. Census Urbanized Area Boundaries, NMDOT-Adjusted, and U.S. Census Urban Clusters, August 21, 2013. In crashes before 2013, “urban” was defined as a town or city with a population of at least 2,500 people.

Table 1: Total Crashes and Alcohol-involved Crashes by Crash Severity in Guadalupe County, 2007-2016

Year	Total Crashes				Alcohol-involved Crashes			
	Fatal	Injury	Property Damage Only	Total	Fatal	Injury	Property Damage Only	Total
2007	12	62	136	210	3	4	1	8
2008	8	64	124	196	0	4	1	5
2009	6	56	114	176	0	6	5	11
2010	5	65	113	183	0	7	4	11
2011	6	52	98	156	1	3	4	8
2012	6	54	115	175	1	4	3	8
2013	5	60	115	180	1	1	0	2
2014	7	42	109	158	1	2	0	3
2015	5	57	124	186	1	1	1	3
2016	10	50	161	221	2	4	2	8

Figure 1: Alcohol-involved Fatal and Injury Crashes Compared with Non-alcohol-involved Fatal and Injury Crashes in Guadalupe County, 2007-2016

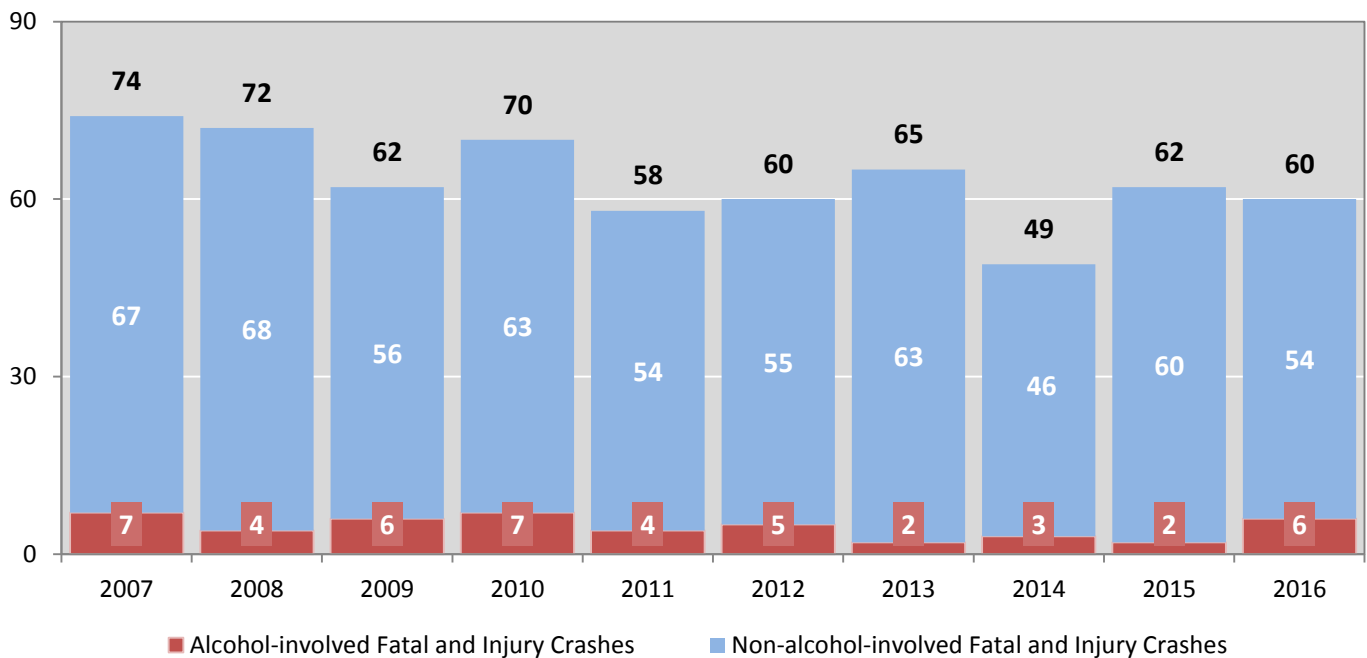


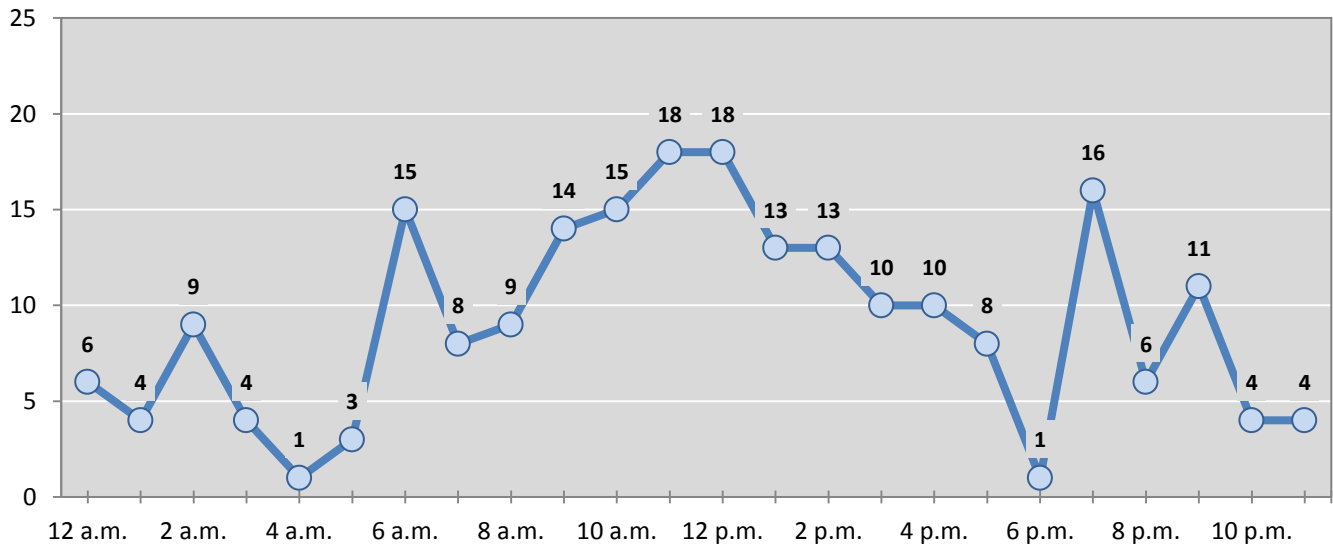
Table 2: Crashes by Month in Guadalupe County, 2012-2016

Month	Crashes					5-Year Average
	2012	2013	2014	2015	2016	
January	7	15	8	29	19	16
February	14	15	12	17	17	15
March	14	16	25	11	14	16
April	10	12	13	12	9	11
May	13	17	13	7	8	12
June	15	17	13	17	9	14
July	18	15	13	14	22	16
August	16	10	9	14	23	14
September	13	14	8	10	15	12
October	15	11	12	11	14	13
November	11	25	18	22	11	17
December	29	13	14	22	60	28
Total Crashes	175	180	158	186	221	184

Table 3: Alcohol-involved Crashes by Month in Guadalupe County, 2012-2016

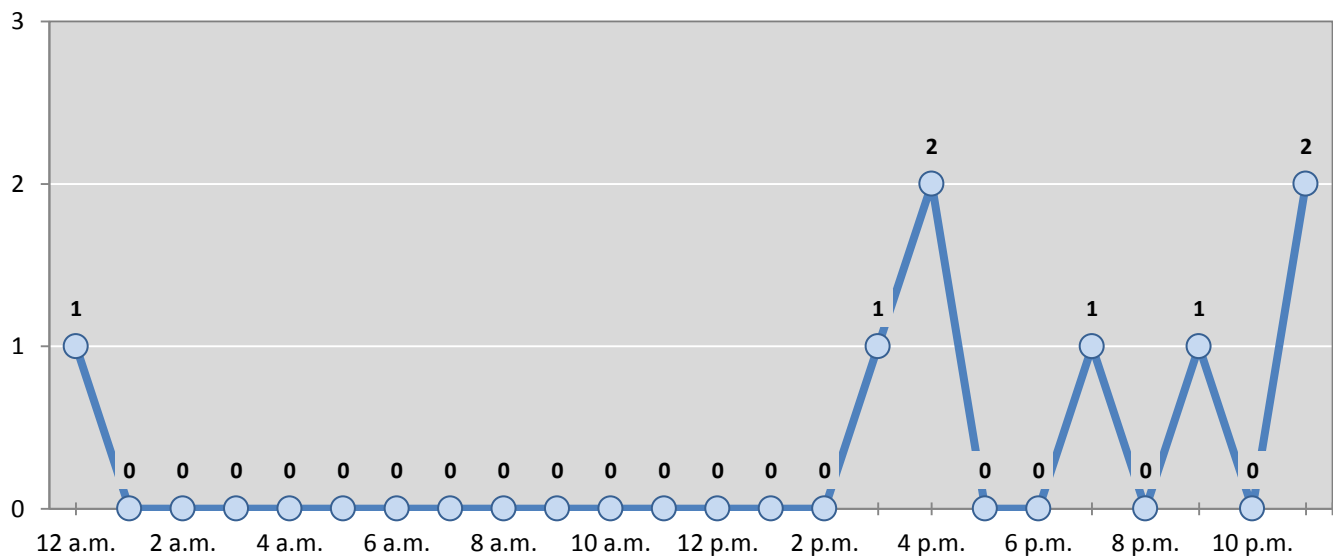
Month	Alcohol-involved Crashes					5-Year Average
	2012	2013	2014	2015	2016	
January	0	0	0	0	0	0
February	1	0	0	0	0	0
March	2	0	2	0	0	1
April	1	0	0	0	2	1
May	2	0	0	0	1	1
June	0	0	0	0	2	0
July	0	0	0	1	1	0
August	1	0	0	0	1	0
September	0	0	0	0	1	0
October	0	0	0	0	0	0
November	1	1	1	0	0	1
December	0	1	0	2	0	1
Total Crashes	8	2	3	3	8	5

Figure 2: Crashes by Hour in Guadalupe County, 2016



* In 2016, Guadalupe County had 1 crashes for which hour data were missing.

Figure 3: Alcohol-involved Crashes by Hour in Guadalupe County, 2016



* In 2016, Guadalupe County had 0 alcohol-involved crashes for which hour data were missing.

Table 4: Alcohol-involved Crashes by Day of Week in Guadalupe County, 2012-2016

Day of Week	Alcohol-involved Crashes					5-Year Average
	2012	2013	2014	2015	2016	
Sunday	2	1	0	0	0	1
Monday	2	0	0	0	1	1
Tuesday	0	0	1	0	0	0
Wednesday	0	1	0	1	0	0
Thursday	0	0	0	1	1	0
Friday	3	0	2	0	2	1
Saturday	1	0	0	1	4	1
Total Crashes	8	2	3	3	8	5

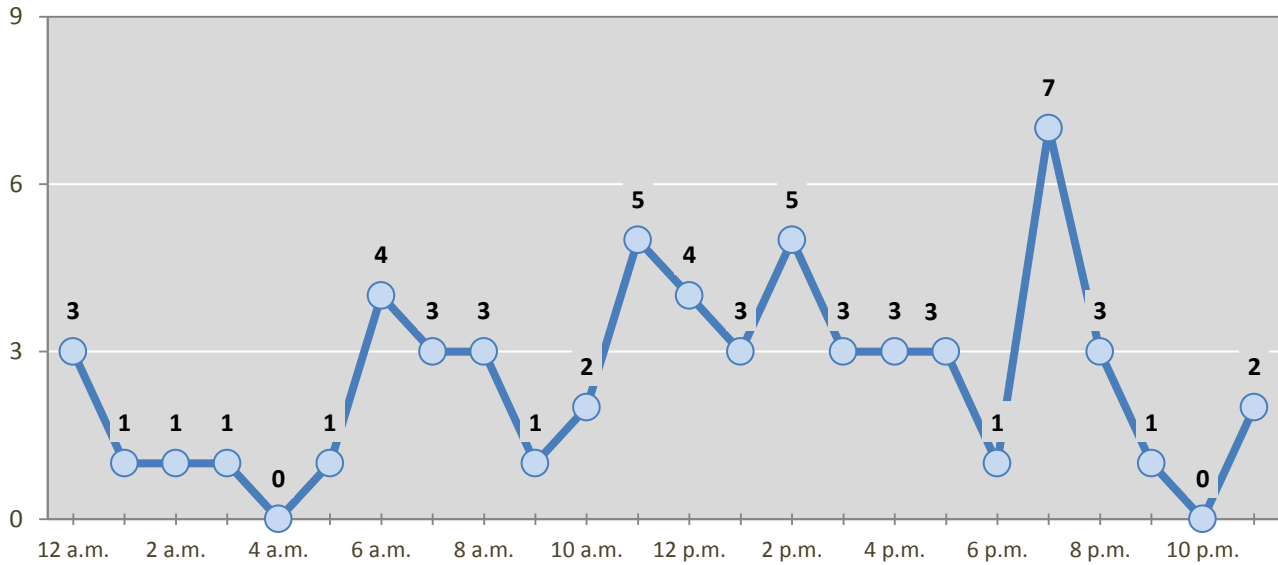
Table 5: Fatal and Injury Crashes by Day of Week in Guadalupe County, 2012-2016

Day of Week	Fatal and Injury Crashes					5-Year Average
	2012	2013	2014	2015	2016	
Sunday	10	10	14	14	5	11
Monday	10	11	10	8	10	10
Tuesday	7	9	6	8	8	8
Wednesday	10	5	2	4	6	5
Thursday	10	5	4	5	3	5
Friday	8	11	6	7	9	8
Saturday	5	14	7	16	19	12
Total Crashes	60	65	49	62	60	59

Table 6: Pedestrian and Pedalcyclist Crashes by Day of Week in Guadalupe County, 2012-2016

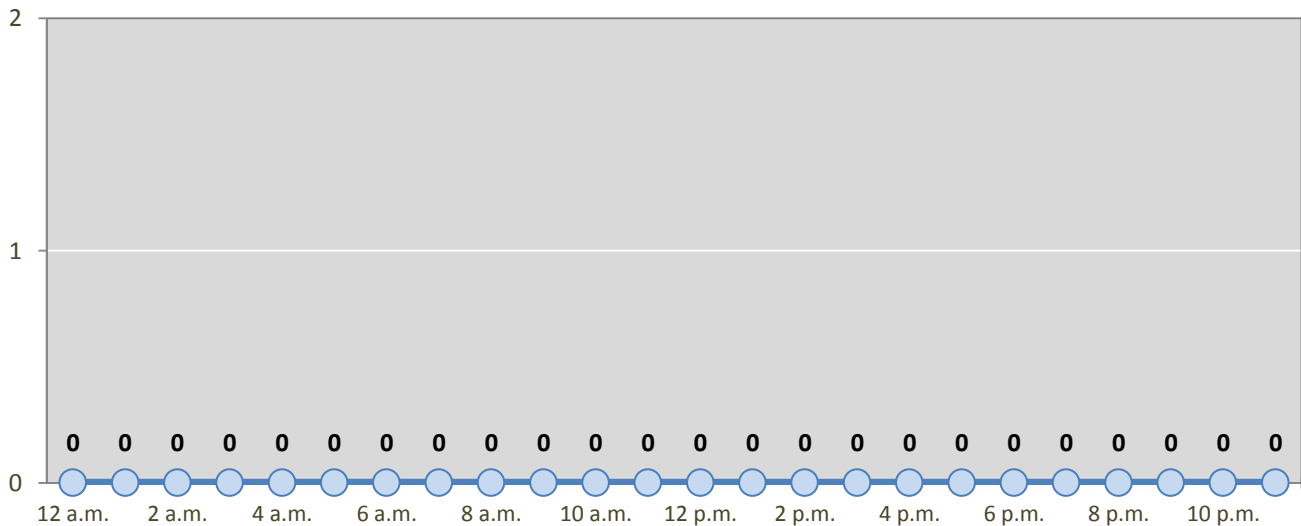
Day of Week	Pedestrian and Pedalcyclist Crashes					5-Year Average
	2012	2013	2014	2015	2016	
Sunday	0	0	0	1	0	0
Monday	0	0	1	0	0	0
Tuesday	0	1	0	0	1	0
Wednesday	0	0	0	0	0	0
Thursday	0	0	0	0	0	0
Friday	0	0	0	0	0	0
Saturday	0	0	0	0	0	0
Total Crashes	0	1	1	1	1	1

Figure 4: Fatal and Injury Crashes by Hour in Guadalupe County, 2016



* In 2016, Guadalupe County had 0 crashes for which hour data were missing.

Figure 5: Pedestrian and Pedalcyclist Crashes by Hour in Guadalupe County, 2016



* In 2016, Guadalupe County had 0 crashes for which hour data were missing.

Table 7: Severity of Injuries to People in Crashes by Rural and Urban Location in Guadalupe County, 2016

Urban and Rural Locations by Alcohol-involvement	People in Crashes by Severity of Injuries					Total People
	Fatalities (Class K)	Suspected Serious Injuries (Class A)	Suspected Minor Injuries (Class B)	Possible Injuries (Class C)	No Apparent Injuries (Class O)	
People in Alcohol-involved Crashes	2	0	4	1	15	22
Urban	0	0	0	0	0	0
Rural Non-Interstate	2	0	2	1	8	13
Rural Interstate	0	0	2	0	7	9
People in Crashes	12	14	29	40	408	503
Urban	0	0	0	0	0	0
Rural Non-Interstate	8	2	11	11	100	132
Rural Interstate	4	12	18	29	308	371
Percent in Alcohol-involved Crashes	17%	0%	14%	3%	4%	4%

Table 8: Total Crashes by Roadway System and Crash Severity in Guadalupe County, 2012-2016

Crash Severity by System	Crashes by Year					5-Year Average
	2012	2013	2014	2015	2016	
Total Rural Interstate	98	94	84	104	150	106
Fatal Crash	3	3	6	1	4	3
Injury Crash	27	34	20	36	32	30
Property Damage Only Crash	68	57	58	67	114	73
Total Rural Non-Interstate	34	57	74	82	71	64
Fatal Crash	3	1	1	4	6	3
Injury Crash	10	19	22	21	18	18
Property Damage Only Crash	21	37	51	57	47	43
Total Urban	43	29	0	0	0	14
Fatal Crash	0	1	0	0	0	0
Injury Crash	17	7	0	0	0	5
Property Damage Only Crash	26	21	0	0	0	9

Table 9: Total Crashes by Crash Classification in Guadalupe County, 2012-2016

Crash Classification	Total Crashes by Year					5-Year Average
	2012	2013	2014	2015	2016	
Animal	8	15	11	11	21	13
Fixed Object	30	26	21	27	40	29
Other (Non-Collision)	15	15	9	9	19	13
Other (Object)	10	9	7	14	15	11
Other Vehicle	57	46	57	72	85	63
Overturn/Rollover	49	62	36	17	16	36
Parked Vehicle	4	3	12	5	7	6
Pedalcyclist	0	0	0	0	0	0
Pedestrian	0	1	1	1	1	1
Railroad Train	1	1	0	0	0	0
Rollover	0	0	1	28	17	9
Vehicle on Other Road	0	1	2	2	0	1
Missing Data	1	1	1	0	0	1
Total Crashes	175	180	158	186	221	184

Table 10: Vehicles in Crashes by Vehicle Type in Guadalupe County, 2012-2016

Vehicle Type ¹	Vehicles in Crashes by Vehicle Type					5-Year Average
	2012	2013	2014	2015	2016	
Bus	1	0	0	0	0	0
Motorcycle	8	5	3	1	5	4
Passenger	61	79	50	63	79	66
Pedalcyclist	0	0	0	0	0	0
Pedestrian	0	1	1	1	1	1
Pickup	46	45	32	52	68	49
Semi	61	55	80	65	117	76
Van/SUV/4WD	39	27	49	54	45	43
Other Vehicle	8	9	4	18	6	9
Missing Data	16	21	28	23	6	19
Total Vehicles	240	242	247	277	327	267

¹ Pedestrians and pedalcyclists are counted as non-motorized vehicles, when involved in a crash with a motor vehicle. See Page 17 for data on drivers of non-motorized vehicles in crashes (i.e. pedestrians and pedalcyclists).

Table 11: Motor Vehicle Drivers in Crashes by Vehicle Type and Age Group in Guadalupe County, 2016

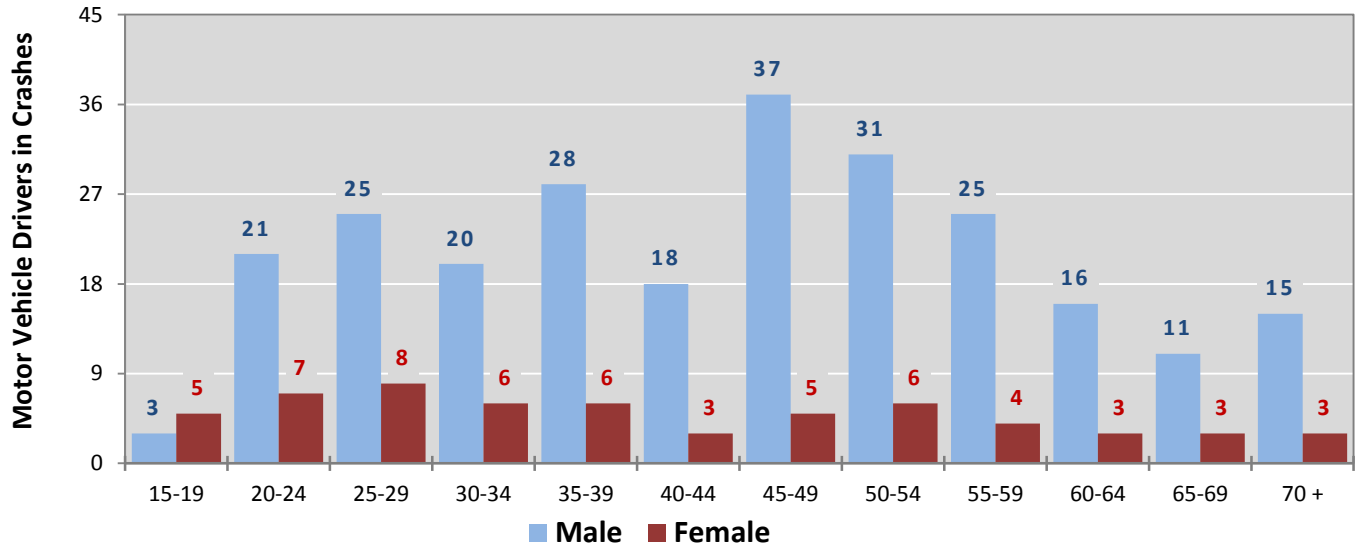
Age Groups	Motor Vehicle ¹ Drivers by Vehicle Type and Age Group								Total Drivers
	Bus	Motor-cycle	Passenger	Pickup	Semi	Van 4WD SUV	Other Vehicle	Missing Data	
15-19	0	1	6	0	0	0	1	0	8
20-24	0	0	11	10	2	5	0	0	28
25-29	0	1	11	4	12	4	1	0	33
30-34	0	0	7	8	10	2	0	0	27
35-39	0	0	6	6	16	6	0	0	34
40-44	0	0	4	6	7	2	1	1	21
45-49	0	0	8	8	21	5	0	0	42
50-54	0	0	6	10	16	4	0	1	37
55-59	0	2	6	2	14	5	0	0	29
60-64	0	0	2	5	10	1	1	0	19
65-69	0	1	3	0	6	4	0	0	14
70 +	0	0	5	6	1	4	2	0	18
Missing Data	0	0	4	3	2	3	0	4	16
Total Drivers	0	5	79	68	117	45	6	6	326

Table 12: Alcohol-involved Motor Vehicle Drivers in Crashes by Vehicle Type and Age Group in Guadalupe County, 2016

Age Groups	Alcohol-involved Motor Vehicle ¹ Drivers by Vehicle Type and Age Group								Total Drivers
	Bus	Motor-cycle	Passenger	Pickup	Semi	Van 4WD SUV	Other Vehicle	Missing Data	
15-19	0	0	0	0	0	0	0	0	0
20-24	0	0	0	0	0	0	0	0	0
25-29	0	0	1	1	0	0	0	0	2
30-34	0	0	0	2	0	1	0	0	3
35-39	0	0	0	0	0	0	0	0	0
40-44	0	0	0	0	0	0	0	0	0
45-49	0	0	0	0	0	0	0	0	0
50-54	0	0	0	2	0	0	0	0	2
55-59	0	1	0	0	0	0	0	0	1
60-64	0	0	0	0	0	0	0	0	0
65-69	0	0	0	0	0	0	0	0	0
70 +	0	0	0	0	0	0	0	0	0
Missing Data	0	0	0	0	0	0	0	0	0
Total Drivers	0	1	1	5	0	1	0	0	8

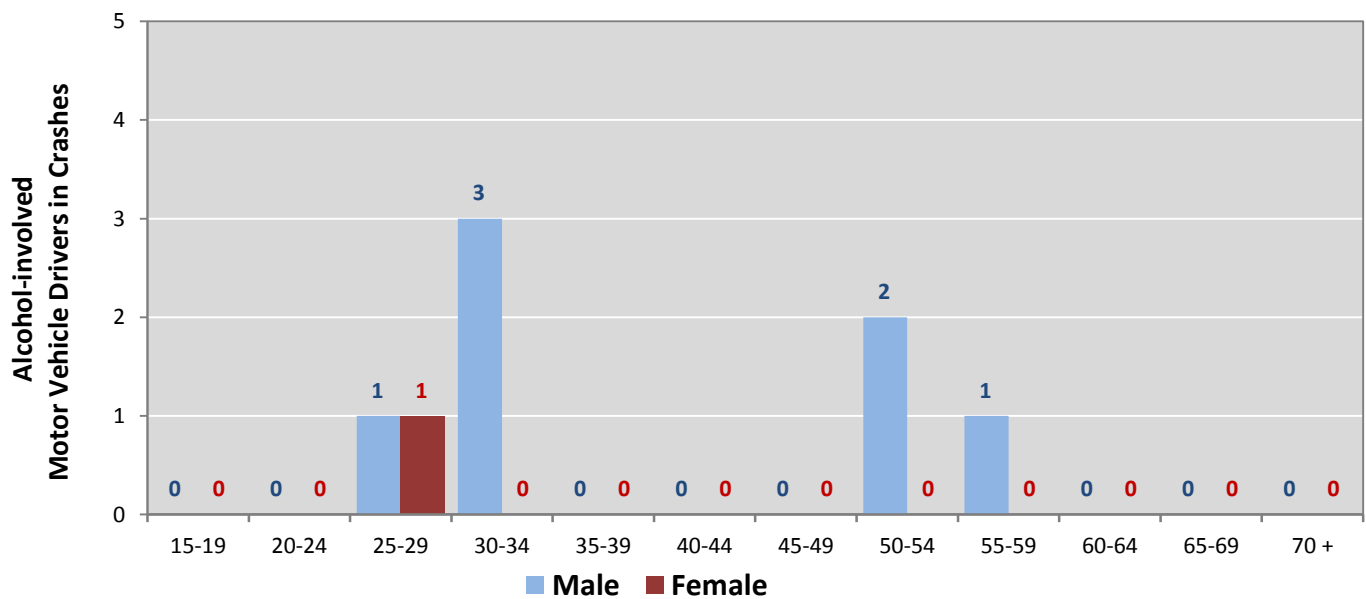
¹ See Page 17 for data on drivers of non-motorized vehicles in crashes (i.e. pedestrians and pedalcyclists).

Figure 6: Motor Vehicle Drivers in Crashes by Age Group and Sex in Guadalupe County, 2016



* In 2016, Guadalupe County had 17 drivers in crashes for which age or sex data were missing.

Figure 7: Alcohol-involved Motor Vehicle Drivers in Crashes by Age Group and Sex in Guadalupe County, 2016



* In 2016, Guadalupe County had 0 drivers in crashes for which age or sex data were missing.

Table 13: Alcohol-involved Motor Vehicle Drivers Under 21 (Ages 15-20) in Crashes in Guadalupe County, 2012-2016

Age ¹	Year					5-Year Total
	2012	2013	2014	2015	2016	
15	0	0	0	0	0	0
16	0	0	0	0	0	0
17	0	0	0	0	0	0
18	0	0	0	0	0	0
19	1	0	0	0	0	1
20	0	1	0	0	0	1
Total Drivers	1	1	0	0	0	2

Table 14: Motor Vehicle Drivers Under 21 (Ages 15-20) in Crashes by Age, Sex and Alcohol-involvement in Guadalupe County, 2016

Age ¹	Total Drivers				Alcohol-involved Drivers			
	Sex		Total Drivers	Percent of Total	Sex		Total Drivers	Percent of Total
	Male	Female			Male	Female		
15	0	0	0	0%	0	0	0	0%
16	0	0	0	0%	0	0	0	0%
17	0	1	1	6%	0	0	0	0%
18	2	3	5	31%	0	0	0	0%
19	1	1	2	13%	0	0	0	0%
20	5	3	8	50%	0	0	0	0%
Total Drivers	8	8	16	100%	0	0	0	0%

¹ For analysis of drivers under age 21, when the driver age or sex are not identified on the crash report (typically hit-and-run drivers), the driver data are considered unreliable and are excluded from the analysis.

**Table 15: Frequency of Contributing Factors in Crashes
by Crash Severity in Guadalupe County, 2016**

Contributing Factors	Frequency of Contributing Factor ¹ by Crash Severity			
	Frequency in Fatal Crashes	Frequency in Injury Crashes	Frequency in Property Damage Only Crashes	Frequency in All Crashes
Human	18	67	162	247
Driver Inattention	5	28	55	88
Speed Too Fast for Conditions	0	8	25	33
Other Improper Driving	0	4	24	28
Avoid No Contact - Other	0	7	12	19
Excessive Speed	3	4	8	15
Following Too Closely	0	2	9	11
Avoid No Contact - Vehicle	2	2	6	10
Drove Left Of Center	2	2	4	8
Alcohol Involved	2	4	2	8
Improper Overtaking	0	0	5	5
Made Improper Turn	0	2	3	5
Drug Involved	3	1	0	4
Failed to Yield Right of Way	0	1	2	3
Improper Backing	0	0	3	3
Improper Lane Change	0	0	3	3
Cell Phone	0	1	0	1
Passed Stop Sign	0	1	0	1
Pedestrian Error	1	0	0	1
Vehicle Skidded Before Brake	0	0	1	1
Disregarded Traffic Signal	0	0	0	0
Driverless Moving Vehicle	0	0	0	0
Failed to Yield to Emergency Vehicle	0	0	0	0
Failed to Yield to Police Vehicle	0	0	0	0
High Speed Pursuit	0	0	0	0
Texting	0	0	0	0
Vehicle	0	2	9	11
Other Mechanical Defect	0	2	5	7
Defective Tires	0	0	4	4
Defective Steering	0	0	0	0
Inadequate Brakes	0	0	0	0
Environment	0	1	2	3
Low Visibility Due to Smoke	0	0	2	2
Road Defect	0	1	0	1
Traffic Control Not Functioning	0	0	0	0
Other	8	29	110	147
Other - No Driver Error	3	18	58	79
None	5	11	52	68

¹ Multiple contributing factors may be reported for any vehicle in a crash.

Table 16: People in Crashes by Crash Classification and Severity of Injuries in Guadalupe County, 2016

Crash Classification	People in Crashes by Severity of Injuries					Total People
	Fatalities (Class K)	Suspected Serious Injuries (Class A)	Suspected Minor Injuries (Class B)	Possible Injuries (Class C)	No Apparent Injuries (Class O)	
Animal	0	0	3	2	29	34
Fixed Object	0	4	3	11	51	69
Other (Non-Collision)	1	0	0	2	27	30
Other (Object)	0	0	1	0	27	28
Other Vehicle	7	6	12	16	226	267
Overturn/Rollover	1	1	6	4	18	30
Parked Vehicle	0	0	0	0	14	14
Pedalcyclist	0	0	0	0	0	0
Pedestrian	1	0	0	0	2	3
Railroad Train	0	0	0	0	0	0
Rollover	2	3	4	5	14	28
Vehicle on Other Road	0	0	0	0	0	0
Missing Data	0	0	0	0	0	0
Total People	12	14	29	40	408	503

Table 17: Killed or Injured Unbelted People in Crashes by Sex and Age Group in Guadalupe County, 2016

Age Groups	Unbelted People Killed or Injured ^{1,2}				Total People
	Male	Percent of Male	Female	Percent of Female	
0-4	1	17%	1	50%	2
5-9	0	0%	0	0%	0
10-14	1	17%	0	0%	1
15-19	1	17%	0	0%	1
20-24	0	0%	1	50%	1
25-29	0	0%	0	0%	0
30-34	0	0%	0	0%	0
35-39	0	0%	0	0%	0
40-44	1	17%	0	0%	1
45-49	0	0%	0	0%	0
50-54	2	33%	0	0%	2
55-59	0	0%	0	0%	0
60-64	0	0%	0	0%	0
65-69	0	0%	0	0%	0
70 +	0	0%	0	0%	0
Missing Data	0	0%	0	0%	0
Total People	6	100%	2	100%	8

¹ People injured are in one of three categories: suspected serious injury, suspected minor injury, or possible injury.

² Excludes people in or on buses, heavy trucks, motorcycles, or ATVs.

Figure 8: Seatbelt Use by People in Crashes with Fatal or Suspected Serious Injuries in Guadalupe County, 2012-2016

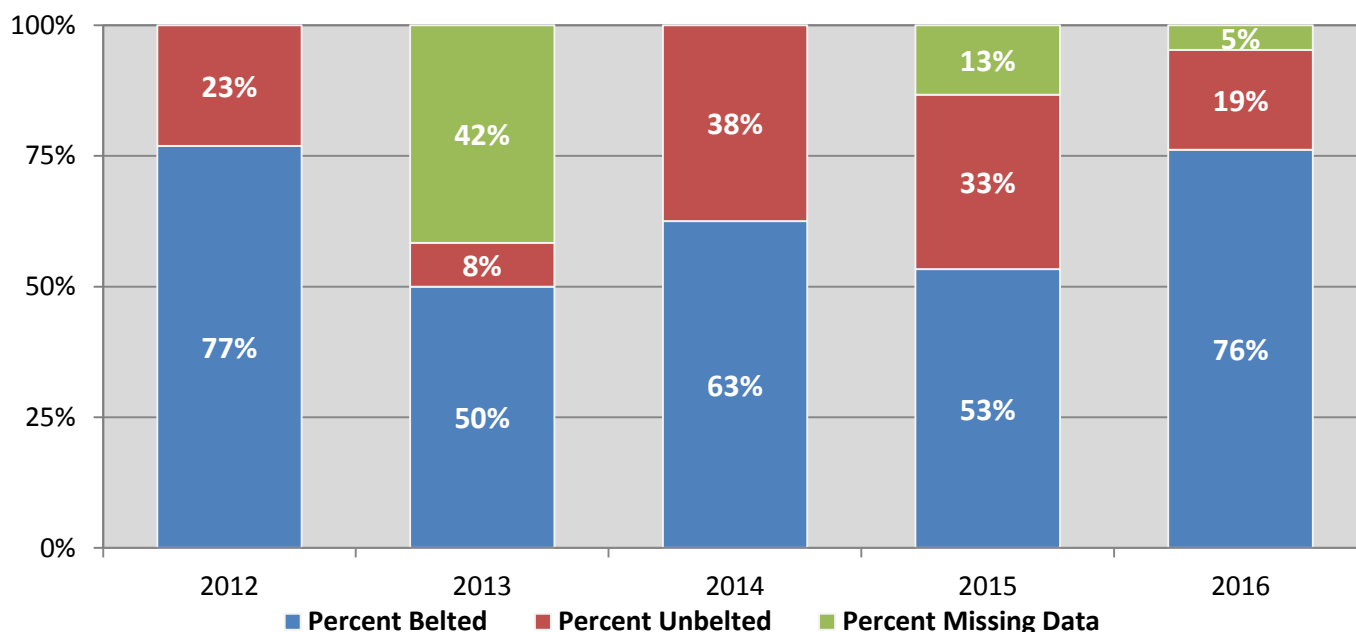
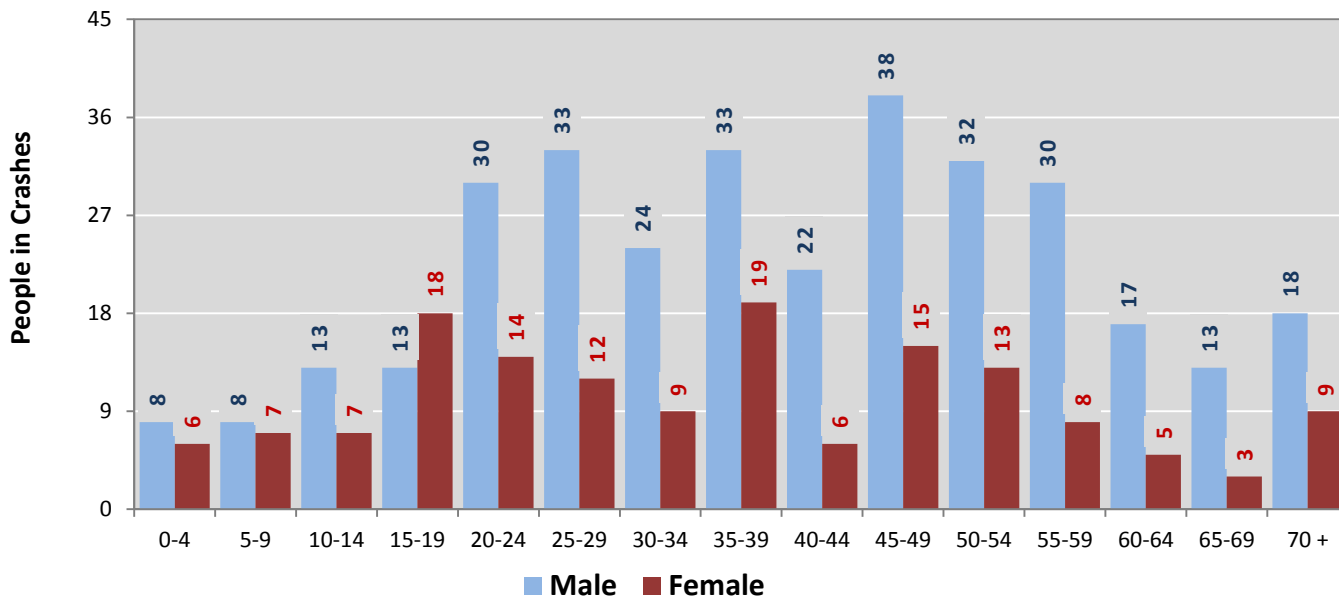
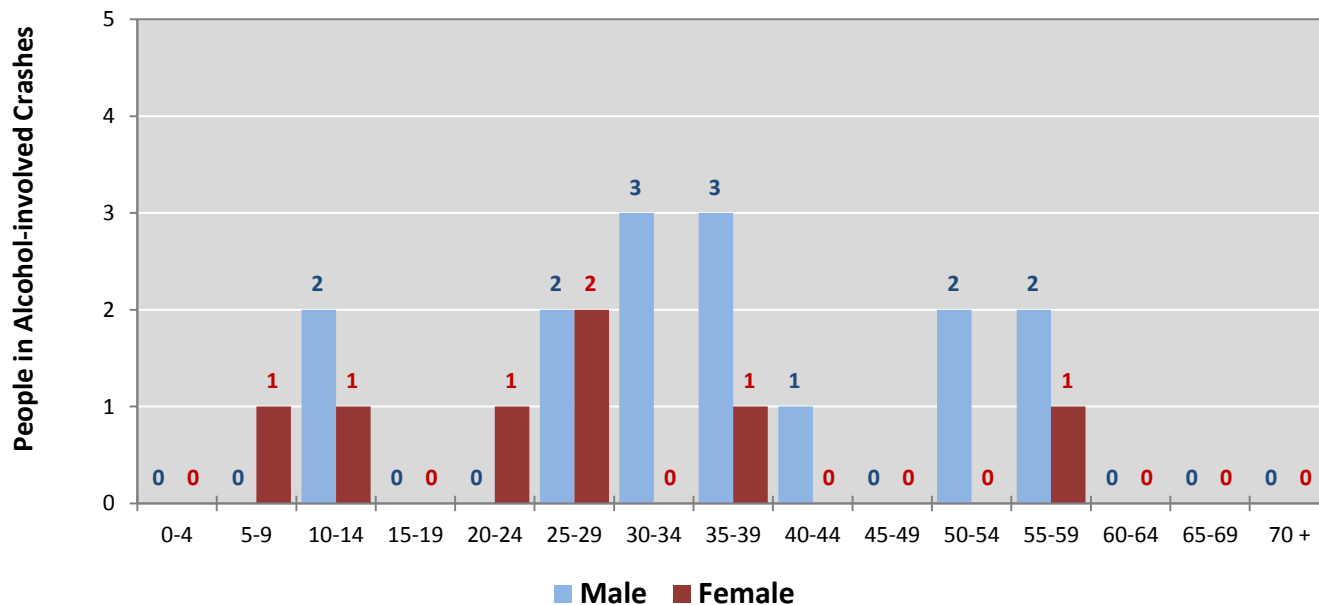


Figure 9: People in Crashes by Age Group and Sex in Guadalupe County, 2016



* In 2016, Guadalupe County had 20 people in crashes for which age or sex data were missing.

Figure 10: People in Alcohol-involved Crashes by Age Group and Sex in Guadalupe County, 2016



* In 2016, Guadalupe County had 0 people in alcohol-involved crashes for which age or sex data were missing.

Table 18: Pedestrians and Pedalcyclists in Crashes by Age Group in Guadalupe County, 2012-2016

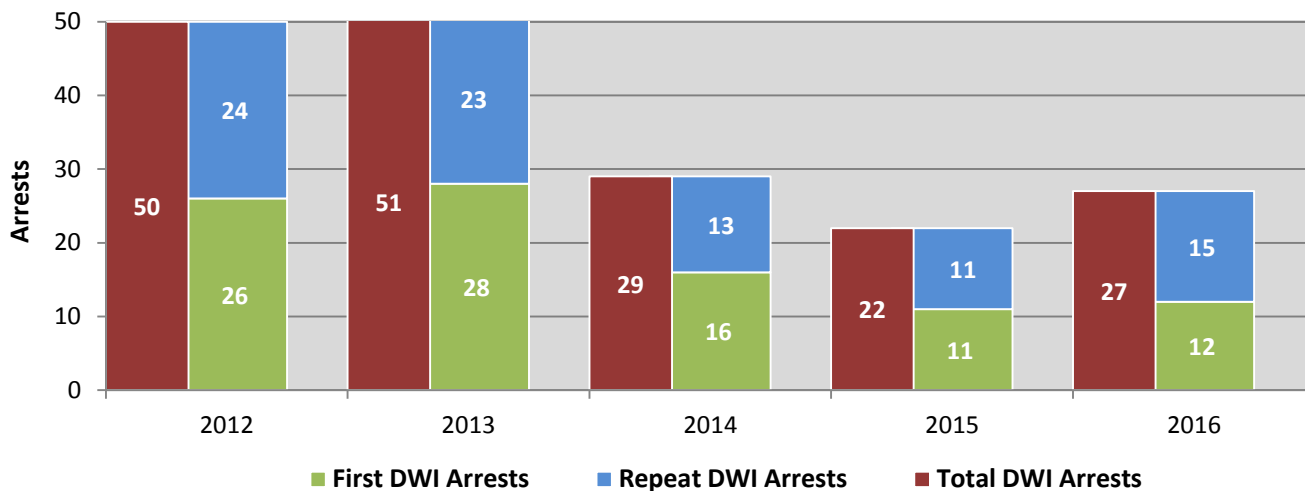
Age Groups	Pedestrians and Pedalcyclists ¹ in Crashes					5-Year Total People
	2012	2013	2014	2015	2016	
0-4	0	0	0	0	0	0
5-9	0	0	0	0	0	0
10-14	0	0	0	0	0	0
15-19	0	0	0	0	0	0
20-24	0	0	1	0	1	2
25-29	0	0	0	0	0	0
30-34	0	0	0	1	0	1
35-39	0	0	0	0	0	0
40-44	0	0	0	0	0	0
45-49	0	0	0	0	0	0
50-54	0	0	0	0	0	0
55-59	0	0	0	0	0	0
60-64	0	0	0	0	0	0
65-69	0	0	0	0	0	0
70 +	0	1	0	0	0	1
Missing Data	0	0	0	0	0	0
Total People	0	1	1	1	1	4

Table 19: Pedestrians and Pedalcyclists in Crashes by Alcohol Involvement and Severity of Injuries in Guadalupe County, 2016

Alcohol Involvement	Pedestrians and Pedalcyclists ¹ in Crashes					Total People
	Fatalities (Class K)	Suspected Serious Injuries (Class A)	Suspected Minor Injuries (Class B)	Possible Injuries (Class C)	No Apparent Injury (Class O)	
Total Pedalcyclists	0	0	0	0	0	0
Involved	0	0	0	0	0	0
Not Involved	0	0	0	0	0	0
Total Pedestrians	1	0	0	0	0	1
Involved	0	0	0	0	0	0
Not Involved	1	0	0	0	0	1
Total People	1	0	0	0	0	1

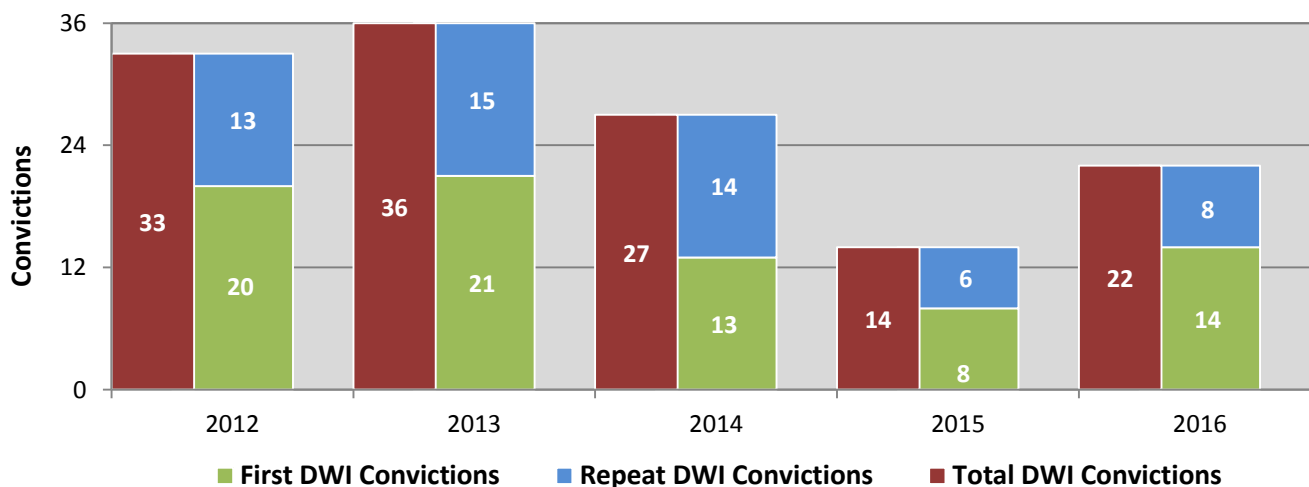
¹ Pedestrians and pedalcyclists are counted as non-motorized vehicles, when involved in a crash with a motor vehicle.

**Figure 11: DWI Arrests in Guadalupe County,
Showing First and Repeat DWI Arrests, 2012-2016**



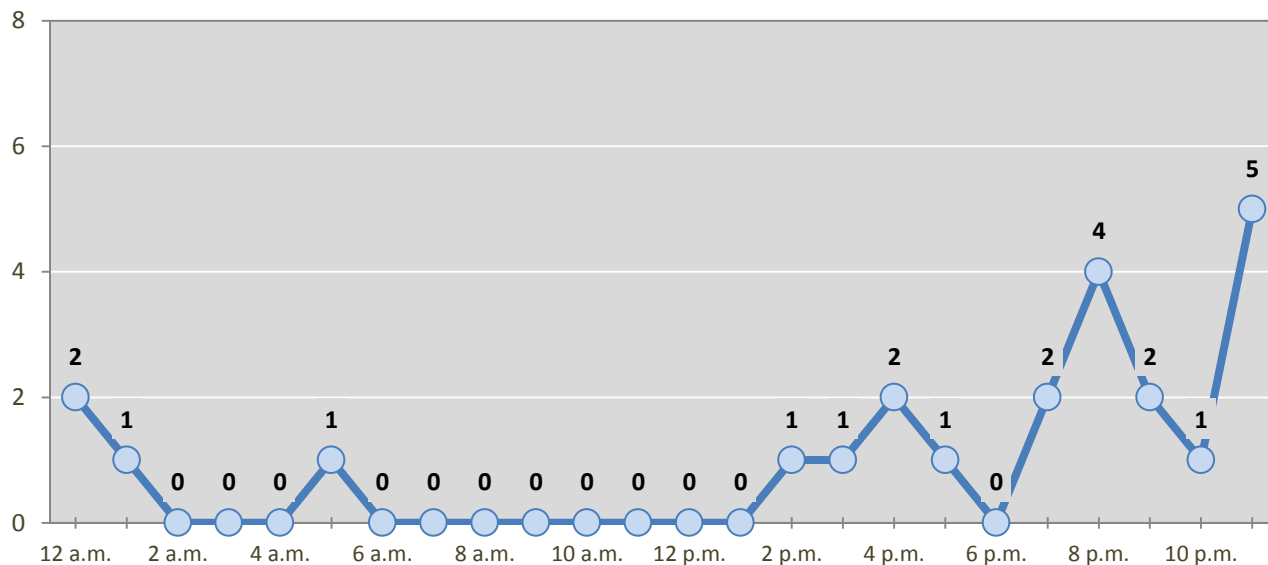
*Values are based upon the year of the arrest.

**Figure 12: DWI Convictions in Guadalupe County,
Showing First and Repeat DWI Convictions, 2012-2016**



*Values are based upon the year of the conviction.

Figure 13: DWI Arrests by Hour in Guadalupe County, 2016



* In 2016, Guadalupe County had 4 arrests for which hour data were missing.

Table 20: DWI Arrests by Day of Week in Guadalupe County, 2012-2016

Day of Week	Year					5-Year Average
	2012	2013	2014	2015	2016	
Sunday	8	9	3	2	2	5
Monday	5	3	4	1	2	3
Tuesday	4	8	4	1	1	4
Wednesday	4	7	3	5	6	5
Thursday	10	8	1	4	4	5
Friday	7	9	7	8	5	7
Saturday	12	7	7	1	7	7
Total Arrests	50	51	29	22	27	36

Table 21: Driver First DWI Arrests by Age Group in Guadalupe County, 2012-2016

Age Groups	Driver First DWI Arrests ¹				
	2012	2013	2014	2015	2016
15-19	3	1	0	1	0
20-24	3	3	5	1	2
25-29	2	7	1	3	1
30-34	1	7	3	1	2
35-39	6	2	2	1	0
40-44	3	2	0	0	1
45-49	2	2	2	1	3
50-54	2	2	2	1	1
55-59	1	1	1	2	1
60-64	0	1	0	0	1
65-69	2	0	0	0	0
70 +	1	0	0	0	0
Missing Data	0	0	0	0	0
Total Drivers	26	28	16	11	12

¹ Values are based upon the year of the arrest.

Table 22: Driver Repeat DWI Arrests by Age Group in Guadalupe County, 2012-2016

Age Groups	Driver Repeat DWI Arrests ¹				
	2012	2013	2014	2015	2016
15-19	0	0	0	0	0
20-24	4	2	0	0	1
25-29	2	3	1	0	2
30-34	2	0	1	0	1
35-39	2	1	3	2	1
40-44	4	6	4	5	1
45-49	2	3	1	1	3
50-54	1	4	2	2	2
55-59	4	3	1	1	4
60-64	3	1	0	0	0
65-69	0	0	0	0	0
70 +	0	0	0	0	0
Missing Data	0	0	0	0	0
Total Drivers	24	23	13	11	15

¹ Values are based upon the year of the arrest.

Table 23: Driver First DWI Convictions by Age Group in Guadalupe County, 2012-2016

Age Groups	Driver First DWI Convictions ¹				
	2012	2013	2014	2015	2016
15-19	2	0	0	0	0
20-24	4	2	3	1	1
25-29	3	3	2	1	1
30-34	0	4	1	0	3
35-39	4	2	1	0	2
40-44	2	3	1	2	0
45-49	2	1	3	1	2
50-54	1	3	1	1	2
55-59	0	2	1	2	3
60-64	0	1	0	0	0
65-69	2	0	0	0	0
70 +	0	0	0	0	0
Missing Data	0	0	0	0	0
Total Drivers	20	21	13	8	14

¹ Values are based upon the year of the conviction.

Table 24: Driver Repeat DWI Convictions by Age Group in Guadalupe County, 2012-2016

Age Groups	Driver Repeat DWI Convictions ¹				
	2012	2013	2014	2015	2016
15-19	0	0	0	0	0
20-24	1	2	0	0	0
25-29	1	1	0	0	0
30-34	2	0	1	0	1
35-39	0	1	2	3	0
40-44	2	4	3	1	1
45-49	2	2	1	1	2
50-54	2	1	4	1	2
55-59	2	3	3	0	2
60-64	1	1	0	0	0
65-69	0	0	0	0	0
70 +	0	0	0	0	0
Missing Data	0	0	0	0	0
Total Drivers	13	15	14	6	8

¹ Values are based upon the year of the conviction.

Table 25: Court Disposition of DWI Arrests for Guadalupe County and the State, 2016

Court Disposition of DWI Arrest ¹	Guadalupe County	Statewide	Percent of Statewide
Total DWI Arrests	27	10,344	0.3%
DWI Arrests Resulting in Convictions	20	5,541	0.4%
DWI Arrests Resulting in Dismissals ²	1	1,512	0.1%
DWI Arrests Awaiting Disposition	6	3,291	0.2%

1 These are the number of DWI arrests in 2016 and whether the case resulted in a conviction or dismissal, or is still awaiting court disposition, as reported in the NM MVD Citation Tracking System (CTS) as of December 2017.

2 For this table, a very small number of "not guilty" rulings may be included in the category Dismissals.

Table 26: Average Number of Days from Date of DWI Arrest to Date of Court Disposition in Guadalupe County and the State, 2016

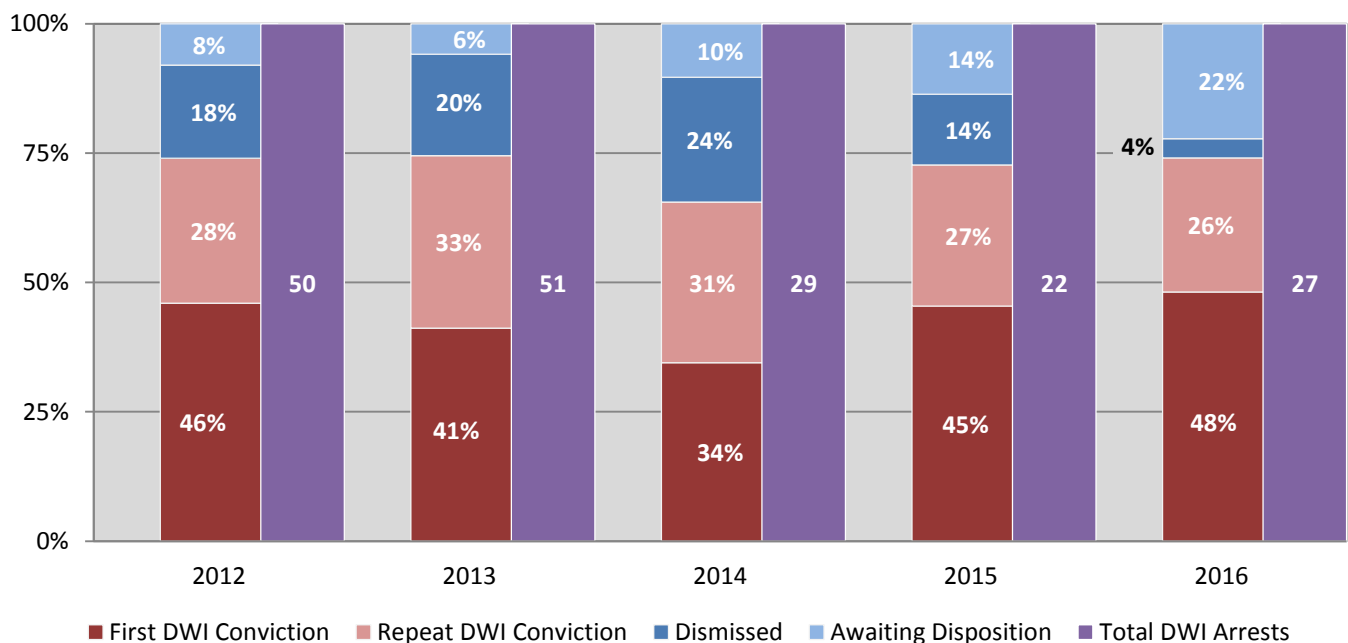
Court Disposition	Average Number of Days		Deviation from Statewide Average
	Guadalupe County	Statewide	
DWI Conviction	119	157	-38
DWI Dismissal	161	179	-18

Table 27: Court Disposition of DWI Arrests in Guadalupe County, 2012-2016

Year of DWI Arrest ¹	Court Disposition				Total DWI Arrests
	First DWI Conviction	Repeat DWI Conviction	Dismissed	Awaiting Disposition	
2012	23	14	9	4	50
2013	21	17	10	3	51
2014	10	9	7	3	29
2015	10	6	3	3	22
2016	13	7	1	6	27

¹ Values are based upon the year of the arrest.

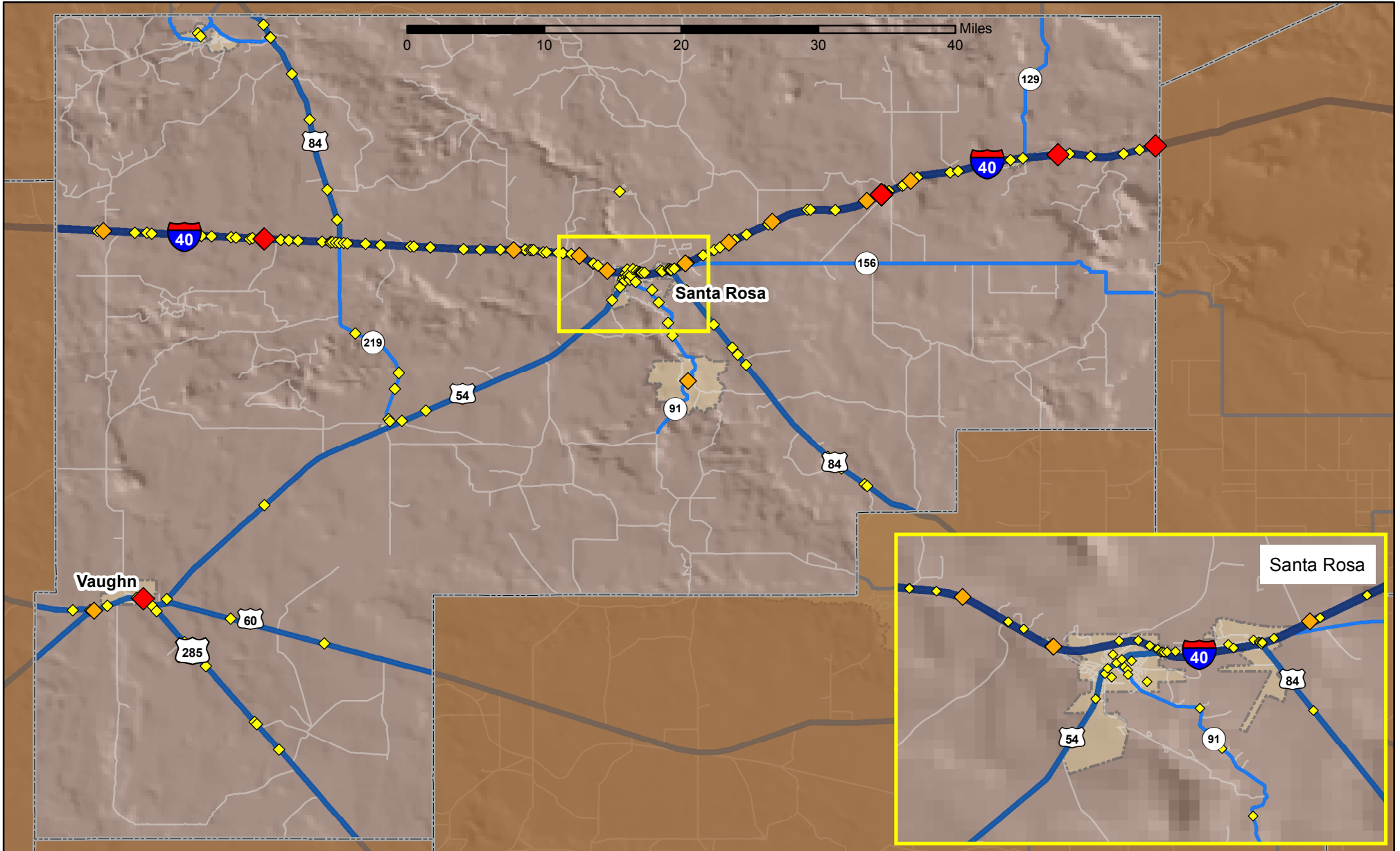
Figure 14: Court Dispositions by Percentage of DWI Arrests in Guadalupe County, 2012-2016



*Table 27 contains the values used to calculate percentages shown in Figure 14.

Crashes in Guadalupe County, New Mexico, 2016

Map created by the Traffic Research Unit, Geospatial & Population Studies at UNM



Legend

Data Source: NMDOT Crash File 2016
<http://tru.unm.edu> CO#5801 tru@unm.edu

- Forest & Wildlife Areas
- Reservations & Pueblos
- County Boundaries
- City Boundaries

- Interstate Highways
- U.S. Highways
- State Highways
- Streets & Roadways

Crashes 2016

- 1 Crash
- 2 Crashes
- 3 - 18 Crashes