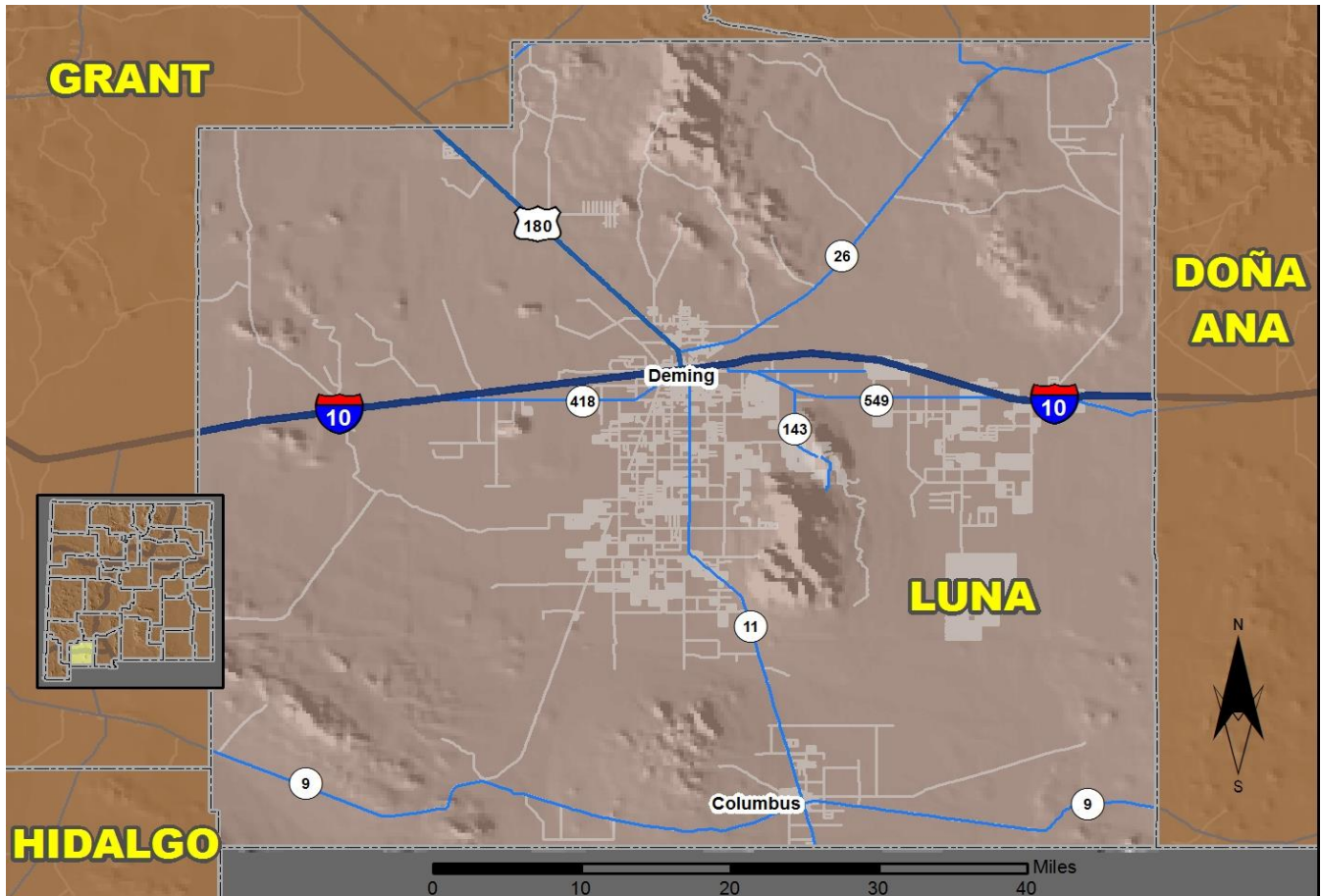


2016 Community Report

Luna County



Produced for the New Mexico Department of Transportation,
Traffic Safety Division, Traffic Records Bureau,
Under Contract 5801 by the University of New Mexico,
Geospatial and Population Studies, Traffic Research Unit

Distributed in compliance with New Mexico Statute 66-7-214
as a reference source regarding New Mexico traffic crashes

For the purposes of this report, data are compiled by the University of New Mexico, Geospatial and Population Studies, Traffic Research Unit (TRU), on behalf of the New Mexico Department of Transportation (NMDOT). Data in this report may differ from that in other data sources, such as the Federal Fatality Analysis Reporting System (FARS), due to the timing of publications and rules for how data are compiled and maintained in Federal vs. State databases. If you have questions regarding this report, please contact the Traffic Safety Division at 505-827-0427.

<http://tru.unm.edu/Crash-Reports/Community-Reports/>

Definitions

Aggravated DWI – A driver arrested for 1) driving with a BAC of 0.16 or higher, 2) driving under the influence of alcohol or drugs and causing bodily injury to a human being as a result, or 3) driving under the influence of alcohol or drugs and refusing to submit to a BAC test at the time of arrest for DWI.

Alcohol-involved Crash – A crash for which the Uniform Crash Report indicated that 1) a DWI citation was issued, 2) alcohol was a contributing factor, or 3) a person in control of a vehicle (including a pedestrian or pedalcyclist) was suspected of being under the influence of alcohol.

Alcohol-involved Driver – A person in control of a vehicle who was cited for DWI or indicated on the Uniform Crash Report as being either suspected or determined by testing to be under the influence of alcohol. There can be multiple alcohol-involved drivers in a single alcohol-involved crash.

Crash – A reported incident on a public roadway involving one or more motor vehicles that resulted in death, personal injury, or at least \$500 in property damage. Crashes on private property (such as a parking lot) are not included.

DWI Arrest (Citation) – In this report, a DWI arrest (a.k.a. a DWI citation) is a driver arrested for either DWI or aggravated DWI. New Mexico’s legal limit for presumption of driving while intoxicated (DWI) is 0.08 for non-commercial drivers older than 21 years of age, 0.04 for commercial vehicle drivers, and 0.02 for drivers younger than 21 years of age.

DWI Conviction – A driver convicted of driving under the intoxicating influence of alcohol, narcotics, or pathogenic drugs, including aggravated DWI.

Fatal Crash – A crash in which at least one person was killed. More than one person can be killed in a single fatal crash.

Fatalities – The number of people killed in a crash. The terms “killed” and “deaths” are synonymous with “fatalities.” A fatality is crash-related if it occurs at the time of the crash or if the person(s) involved in the crash dies within 30 days.

Injury Crash – A reported crash in which at least one person was injured. Injury crashes involve at least one suspected serious injury (Class A), suspected minor injury (Class B), or possible injury (Class C). Fatal crashes are not included.

Missing Data – An indication that the applicable field on the UCR form was left blank or contained an invalid code. Starting with crashes that occurred in 2012, improvements in the identification of missing data in the NMDOT crash database led to an increase in the reported amount of missing data.

Pedalcyclist – A person riding a mechanism of transport that is powered solely by pedals (a.k.a. bicyclist).

Pedestrian – A person on foot, walking, running, jogging, hiking, sitting or lying down who is involved in a motor vehicle traffic crash.

Sources

Crash Data – New Mexico Department of Transportation, Traffic Safety Division, Traffic Records Bureau, Traffic Crash Database, as of the report date below. Crash data are compiled using NMDOT Uniform Crash Reports (UCR), submitted by law enforcement agencies in the state, for any incident on a public roadway involving one or more motor vehicles that resulted in death, injury, or at least \$500 in property damage. These reports are processed by the NMDOT Traffic Records Bureau and analyzed by the University of New Mexico, Geospatial and Population Studies, Traffic Research Unit (TRU).

DWI Citation Tracking System (CTS) – New Mexico Taxation and Revenue Department (NM TRD), Motor Vehicle Division (MVD), DWI Citation Tracking System (CTS), as of December 2017. Repeat offenders are identified by the combination of account key, arrest date, and citation number. County data are based upon the county where the arrest took place. City data are based upon the city where the offender resides.

Urban Areas – New Mexico Department of Transportation, Asset Management and Planning, 2010 U.S. Census Urbanized Area Boundaries, NMDOT-Adjusted, and U.S. Census Urban Clusters, August 21, 2013. In crashes before 2013, “urban” was defined as a town or city with a population of at least 2,500 people.

Table 1: Total Crashes and Alcohol-involved Crashes by Crash Severity in Luna County, 2007-2016

Year	Total Crashes				Alcohol-involved Crashes			
	Fatal	Injury	Property Damage Only	Total	Fatal	Injury	Property Damage Only	Total
2007	12	131	346	489	2	10	8	20
2008	10	120	316	446	2	3	9	14
2009	7	123	323	453	2	11	13	26
2010	8	120	293	421	1	9	9	19
2011	3	110	303	416	2	9	7	18
2012	5	87	283	375	0	3	2	5
2013	5	111	338	454	2	6	6	14
2014	1	110	310	421	0	9	7	16
2015	5	131	289	425	1	6	5	12
2016	11	114	298	423	4	9	6	19

Figure 1: Alcohol-involved Fatal and Injury Crashes Compared with Non-alcohol-involved Fatal and Injury Crashes in Luna County, 2007-2016

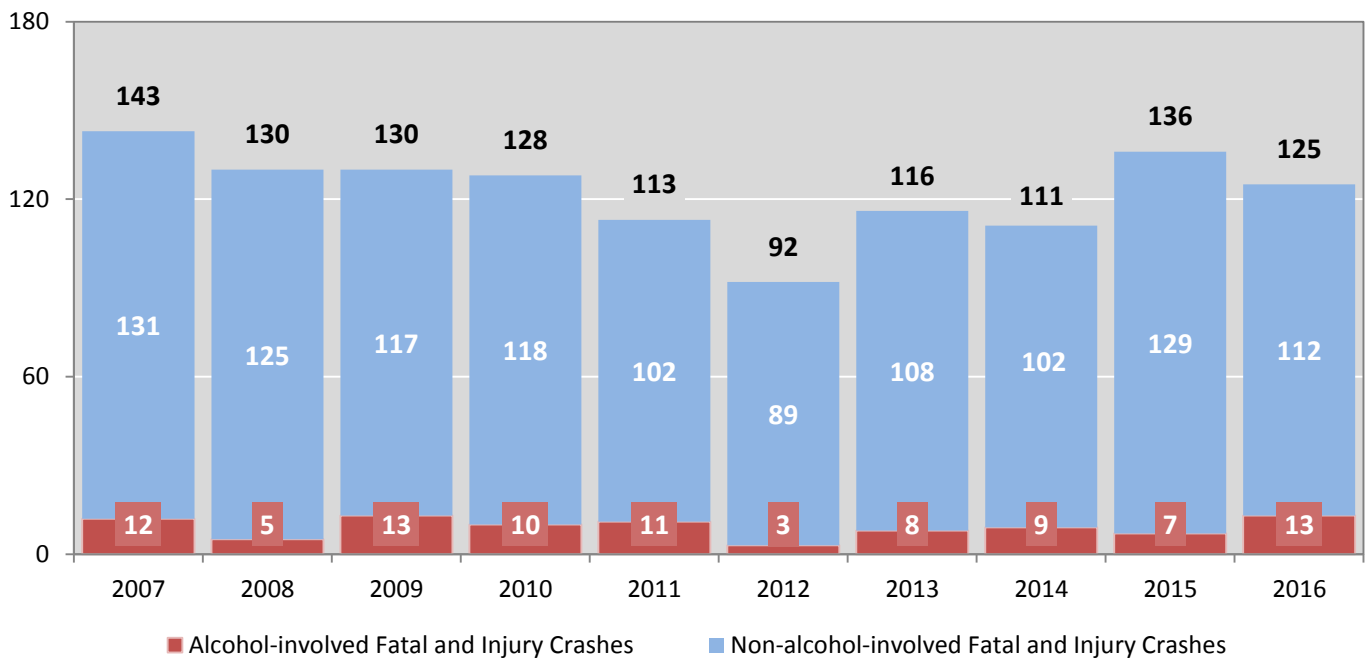


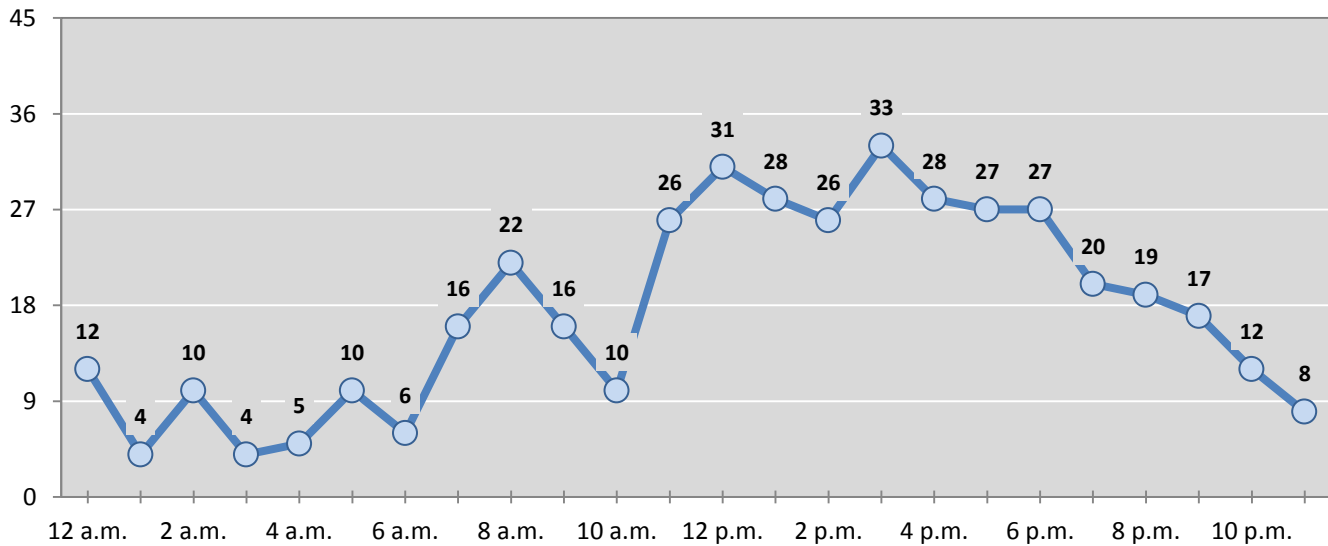
Table 2: Crashes by Month in Luna County, 2012-2016

Month	Crashes					5-Year Average
	2012	2013	2014	2015	2016	
January	29	32	29	39	25	31
February	17	40	35	22	32	29
March	33	49	36	28	45	38
April	35	45	43	27	30	36
May	28	25	46	43	30	34
June	26	31	36	39	27	32
July	57	40	42	48	46	47
August	32	45	26	38	36	35
September	34	36	30	41	43	37
October	29	42	41	27	36	35
November	24	32	27	31	27	28
December	31	37	30	42	46	37
Total Crashes	375	454	421	425	423	420

Table 3: Alcohol-involved Crashes by Month in Luna County, 2012-2016

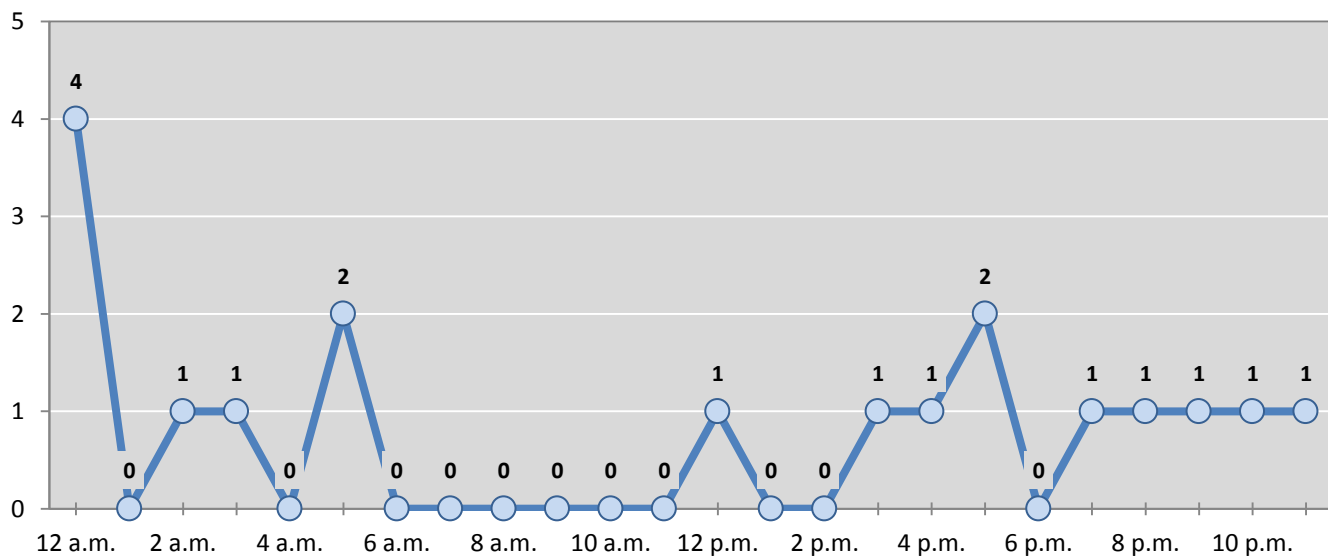
Month	Alcohol-involved Crashes					5-Year Average
	2012	2013	2014	2015	2016	
January	0	0	3	0	1	1
February	0	1	1	0	1	1
March	1	3	2	1	2	2
April	0	2	1	1	1	1
May	2	1	2	3	3	2
June	0	1	2	0	0	1
July	0	1	0	1	2	1
August	0	1	2	2	0	1
September	0	3	0	1	2	1
October	0	0	1	1	3	1
November	2	1	1	1	3	2
December	0	0	1	1	1	1
Total Crashes	5	14	16	12	19	13

Figure 2: Crashes by Hour in Luna County, 2016



* In 2016, Luna County had 6 crashes for which hour data were missing.

Figure 3: Alcohol-involved Crashes by Hour in Luna County, 2016



* In 2016, Luna County had 1 alcohol-involved crashes for which hour data were missing.

Table 4: Alcohol-involved Crashes by Day of Week in Luna County, 2012-2016

Day of Week	Alcohol-involved Crashes					5-Year Average
	2012	2013	2014	2015	2016	
Sunday	1	3	3	4	6	3
Monday	0	0	0	0	2	0
Tuesday	1	3	1	1	2	2
Wednesday	0	1	1	3	2	1
Thursday	0	2	2	1	2	1
Friday	2	3	4	3	1	3
Saturday	1	2	5	0	4	2
Total Crashes	5	14	16	12	19	13

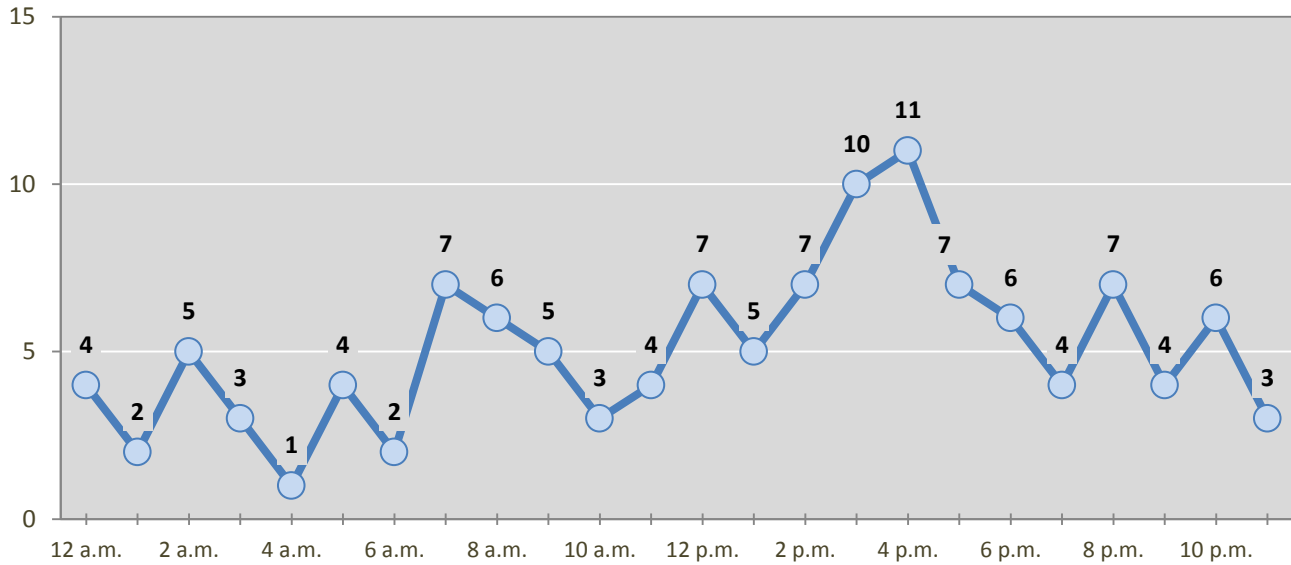
Table 5: Fatal and Injury Crashes by Day of Week in Luna County, 2012-2016

Day of Week	Fatal and Injury Crashes					5-Year Average
	2012	2013	2014	2015	2016	
Sunday	13	15	11	20	20	16
Monday	7	12	8	19	15	12
Tuesday	18	15	16	20	12	16
Wednesday	16	11	18	18	14	15
Thursday	17	23	17	23	21	20
Friday	8	20	25	20	24	19
Saturday	13	20	16	16	19	17
Total Crashes	92	116	111	136	125	116

Table 6: Pedestrian and Pedalcyclist Crashes by Day of Week in Luna County, 2012-2016

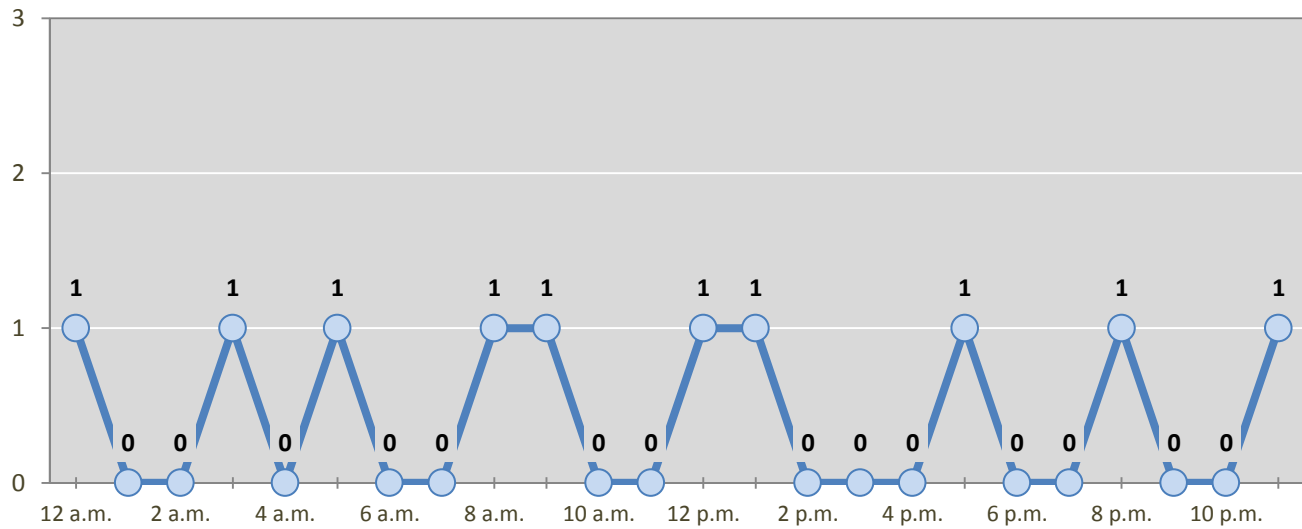
Day of Week	Pedestrian and Pedalcyclist Crashes					5-Year Average
	2012	2013	2014	2015	2016	
Sunday	0	0	2	0	1	1
Monday	1	2	0	1	1	1
Tuesday	1	1	1	0	2	1
Wednesday	1	5	1	1	0	2
Thursday	1	0	1	1	3	1
Friday	3	1	0	0	3	1
Saturday	0	1	1	0	0	0
Total Crashes	7	10	6	3	10	7

Figure 4: Fatal and Injury Crashes by Hour in Luna County, 2016



* In 2016, Luna County had 2 crashes for which hour data were missing.

Figure 5: Pedestrian and Pedalcyclist Crashes by Hour in Luna County, 2016



* In 2016, Luna County had 0 crashes for which hour data were missing.

Table 7: Severity of Injuries to People in Crashes by Rural and Urban Location in Luna County, 2016

Urban and Rural Locations by Alcohol-involvement	People in Crashes by Severity of Injuries					Total People
	Fatalities (Class K)	Suspected Serious Injuries (Class A)	Suspected Minor Injuries (Class B)	Possible Injuries (Class C)	No Apparent Injuries (Class O)	
People in Alcohol-involved Crashes	5	6	7	2	27	47
Urban	1	0	3	1	21	26
Rural Non-Interstate	3	5	4	0	5	17
Rural Interstate	1	1	0	1	1	4
People in Crashes	12	17	57	99	888	1,073
Urban	1	0	20	48	579	648
Rural Non-Interstate	7	11	24	28	176	246
Rural Interstate	4	6	13	23	133	179
Percent in Alcohol-involved Crashes	42%	35%	12%	2%	3%	4%

Table 8: Total Crashes by Roadway System and Crash Severity in Luna County, 2012-2016

Crash Severity by System	Crashes by Year					5-Year Average
	2012	2013	2014	2015	2016	
Total Rural Interstate	51	92	33	98	90	72
Fatal Crash	3	2	1	2	4	2
Injury Crash	19	29	11	35	32	25
Property Damage Only Crash	29	61	21	61	54	45
Total Rural Non-Interstate	28	51	132	102	103	83
Fatal Crash	1	2	0	3	6	2
Injury Crash	10	6	50	36	32	27
Property Damage Only Crash	17	43	82	63	65	54
Total Urban	296	311	256	225	230	264
Fatal Crash	1	1	0	0	1	1
Injury Crash	58	76	49	60	50	59
Property Damage Only Crash	237	234	207	165	179	204

Table 9: Total Crashes by Crash Classification in Luna County, 2012-2016

Crash Classification	Total Crashes by Year					5-Year Average
	2012	2013	2014	2015	2016	
Animal	20	18	9	29	28	21
Fixed Object	45	51	54	58	59	53
Other (Non-Collision)	7	7	10	17	12	11
Other (Object)	16	28	17	14	8	17
Other Vehicle	216	245	266	220	245	238
Overturn/Rollover	37	52	37	25	27	36
Parked Vehicle	19	23	11	14	8	15
Pedalcyclist	3	3	3	1	5	3
Pedestrian	4	7	3	2	5	4
Railroad Train	0	0	0	1	1	0
Rollover	0	0	0	42	17	12
Vehicle on Other Road	3	8	5	0	8	5
Missing Data	5	12	6	2	0	5
Total Crashes	375	454	421	425	423	420

Table 10: Vehicles in Crashes by Vehicle Type in Luna County, 2012-2016

Vehicle Type ¹	Vehicles in Crashes by Vehicle Type					5-Year Average
	2012	2013	2014	2015	2016	
Bus	0	4	3	2	2	2
Motorcycle	17	13	9	7	8	11
Passenger	250	269	284	258	312	275
Pedalcyclist	2	3	4	1	5	3
Pedestrian	5	7	2	2	5	4
Pickup	103	136	162	131	160	138
Semi	25	46	66	51	53	48
Van/SUV/4WD	56	82	105	110	90	89
Other Vehicle	57	114	32	74	40	63
Missing Data	112	95	75	43	30	71
Total Vehicles	627	769	742	679	705	704

¹ Pedestrians and pedalcyclists are counted as non-motorized vehicles, when involved in a crash with a motor vehicle. See Page 17 for data on drivers of non-motorized vehicles in crashes (i.e. pedestrians and pedalcyclists).

Table 11: Motor Vehicle Drivers in Crashes by Vehicle Type and Age Group in Luna County, 2016

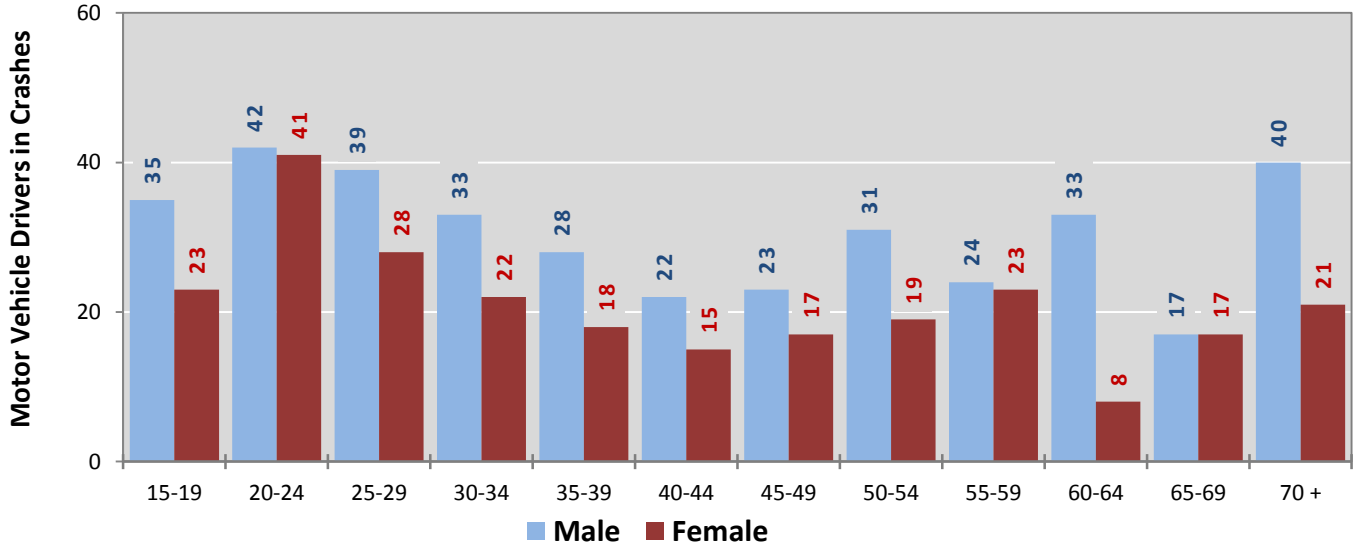
Age Groups	Motor Vehicle ¹ Drivers by Vehicle Type and Age Group								Total Drivers
	Bus	Motor-cycle	Passenger	Pickup	Semi	Van 4WD SUV	Other Vehicle	Missing Data	
15-19	0	0	33	12	0	10	2	1	58
20-24	0	2	42	25	3	7	3	1	83
25-29	0	2	41	11	2	7	4	0	67
30-34	0	0	27	11	4	11	2	0	55
35-39	0	0	20	8	6	7	4	1	46
40-44	1	0	18	9	5	2	2	0	37
45-49	0	0	21	6	5	6	1	1	40
50-54	1	1	17	14	11	4	2	0	50
55-59	0	0	23	13	7	3	0	1	47
60-64	0	1	12	10	2	9	6	1	41
65-69	0	1	6	12	2	8	5	0	34
70 +	0	0	32	13	1	12	5	0	63
Missing Data	0	1	20	16	5	4	4	24	74
Total Drivers	2	8	312	160	53	90	40	30	695

Table 12: Alcohol-involved Motor Vehicle Drivers in Crashes by Vehicle Type and Age Group in Luna County, 2016

Age Groups	Alcohol-involved Motor Vehicle ¹ Drivers by Vehicle Type and Age Group								Total Drivers
	Bus	Motor-cycle	Passenger	Pickup	Semi	Van 4WD SUV	Other Vehicle	Missing Data	
15-19	0	0	2	1	0	0	0	0	3
20-24	0	0	0	1	0	0	0	0	1
25-29	0	0	0	1	0	0	0	0	1
30-34	0	0	5	1	0	0	0	0	6
35-39	0	0	0	0	0	0	0	0	0
40-44	0	0	1	0	0	0	0	0	1
45-49	0	0	0	0	0	0	0	0	0
50-54	0	1	0	0	0	0	0	0	1
55-59	0	0	1	1	0	0	0	0	2
60-64	0	0	0	0	0	0	0	0	0
65-69	0	0	0	0	0	0	0	0	0
70 +	0	0	1	0	0	0	0	0	1
Missing Data	0	0	0	0	0	0	0	0	0
Total Drivers	0	1	10	5	0	0	0	0	16

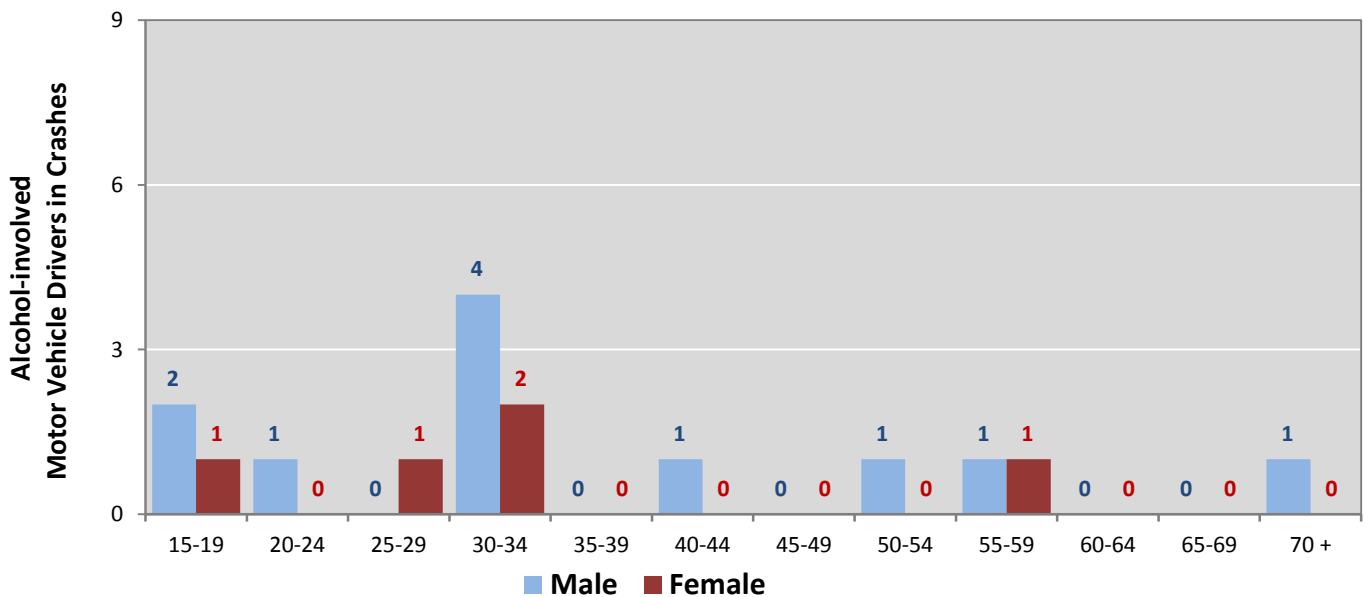
¹ See Page 17 for data on drivers of non-motorized vehicles in crashes (i.e. pedestrians and pedalcyclists).

Figure 6: Motor Vehicle Drivers in Crashes by Age Group and Sex in Luna County, 2016



* In 2016, Luna County had 46 drivers in crashes for which age or sex data were missing.

Figure 7: Alcohol-involved Motor Vehicle Drivers in Crashes by Age Group and Sex in Luna County, 2016



* In 2016, Luna County had 1 drivers in crashes for which age or sex data were missing.

Table 13: Alcohol-involved Motor Vehicle Drivers Under 21 (Ages 15-20) in Crashes in Luna County, 2012-2016

Age ¹	Year					5-Year Total
	2012	2013	2014	2015	2016	
15	0	0	0	0	0	0
16	0	0	0	0	0	0
17	0	0	1	0	1	2
18	0	0	2	0	1	3
19	2	1	1	1	1	6
20	1	3	2	0	0	6
Total Drivers	3	4	6	1	3	17

Table 14: Motor Vehicle Drivers Under 21 (Ages 15-20) in Crashes by Age, Sex and Alcohol-involvement in Luna County, 2016

Age ¹	Total Drivers				Alcohol-involved Drivers			
	Sex		Total Drivers	Percent of Total	Sex		Total Drivers	Percent of Total
	Male	Female			Male	Female		
15	2	3	5	7%	0	0	0	0%
16	7	2	9	12%	0	0	0	0%
17	8	3	11	14%	1	0	1	33%
18	8	11	19	25%	0	1	1	33%
19	10	4	14	18%	1	0	1	33%
20	11	7	18	24%	0	0	0	0%
Total Drivers	46	30	76	100%	2	1	3	100%

¹ For analysis of drivers under age 21, when the driver age or sex are not identified on the crash report (typically hit-and-run drivers), the driver data are considered unreliable and are excluded from the analysis.

**Table 15: Frequency of Contributing Factors in Crashes
by Crash Severity in Luna County, 2016**

Contributing Factors	Frequency of Contributing Factor ¹ by Crash Severity			
	Frequency in Fatal Crashes	Frequency in Injury Crashes	Frequency in Property Damage Only Crashes	Frequency in All Crashes
Human	24	198	403	625
Driver Inattention	8	54	147	209
Failed to Yield Right of Way	0	21	44	65
Other Improper Driving	3	21	41	65
Excessive Speed	3	20	23	46
Following Too Closely	0	8	36	44
Passed Stop Sign	0	10	15	25
Speed Too Fast for Conditions	1	7	15	23
Made Improper Turn	0	6	13	19
Alcohol Involved	4	9	6	19
Improper Backing	0	0	16	16
Disregarded Traffic Signal	0	4	10	14
Improper Lane Change	0	4	10	14
Improper Overtaking	0	4	9	13
Drove Left Of Center	1	6	5	12
Pedestrian Error	2	6	0	8
Avoid No Contact - Other	0	2	5	7
Avoid No Contact - Vehicle	0	3	3	6
Cell Phone	1	3	1	5
Drug Involved	1	4	0	5
Vehicle Skidded Before Brake	0	3	1	4
High Speed Pursuit	0	2	1	3
Driverless Moving Vehicle	0	0	1	1
Failed to Yield to Emergency Vehicle	0	0	1	1
Failed to Yield to Police Vehicle	0	1	0	1
Texting	0	0	0	0
Vehicle	2	8	21	31
Defective Tires	2	5	10	17
Other Mechanical Defect	0	1	8	9
Inadequate Brakes	0	1	2	3
Defective Steering	0	1	1	2
Environment	0	0	2	2
Low Visibility Due to Smoke	0	0	1	1
Road Defect	0	0	1	1
Traffic Control Not Functioning	0	0	0	0
Other	2	66	211	279
None	2	47	144	193
Other - No Driver Error	0	19	67	86

¹ Multiple contributing factors may be reported for any vehicle in a crash.

Table 16: People in Crashes by Crash Classification and Severity of Injuries in Luna County, 2016

Crash Classification	People in Crashes by Severity of Injuries					Total People
	Fatalities (Class K)	Suspected Serious Injuries (Class A)	Suspected Minor Injuries (Class B)	Possible Injuries (Class C)	No Apparent Injuries (Class O)	
Animal	0	0	0	5	45	50
Fixed Object	1	4	9	13	66	93
Other (Non-Collision)	0	0	0	0	15	15
Other (Object)	0	0	0	0	10	10
Other Vehicle	3	6	24	53	665	751
Overturn/Rollover	1	1	8	16	20	46
Parked Vehicle	0	0	1	1	18	20
Pedalcyclist	1	0	3	1	6	11
Pedestrian	1	1	2	0	6	10
Railroad Train	0	0	0	0	3	3
Rollover	5	5	7	7	14	38
Vehicle on Other Road	0	0	3	3	20	26
Missing Data	0	0	0	0	0	0
Total People	12	17	57	99	888	1,073

Table 17: Killed or Injured Unbelted People in Crashes by Sex and Age Group in Luna County, 2016

Age Groups	Unbelted People Killed or Injured ^{1,2}				Total People
	Male	Percent of Male	Female	Percent of Female	
0-4	0	0%	0	0%	0
5-9	0	0%	0	0%	0
10-14	1	14%	0	0%	1
15-19	0	0%	2	25%	2
20-24	2	29%	3	38%	5
25-29	0	0%	1	13%	1
30-34	1	14%	0	0%	1
35-39	1	14%	0	0%	1
40-44	0	0%	0	0%	0
45-49	0	0%	1	13%	1
50-54	1	14%	0	0%	1
55-59	0	0%	0	0%	0
60-64	1	14%	1	13%	2
65-69	0	0%	0	0%	0
70 +	0	0%	0	0%	0
Missing Data	0	0%	0	0%	0
Total People	7	100%	8	100%	15

¹ People injured are in one of three categories: suspected serious injury, suspected minor injury, or possible injury.

² Excludes people in or on buses, heavy trucks, motorcycles, or ATVs.

Figure 8: Seatbelt Use by People in Crashes with Fatal or Suspected Serious Injuries in Luna County, 2012-2016

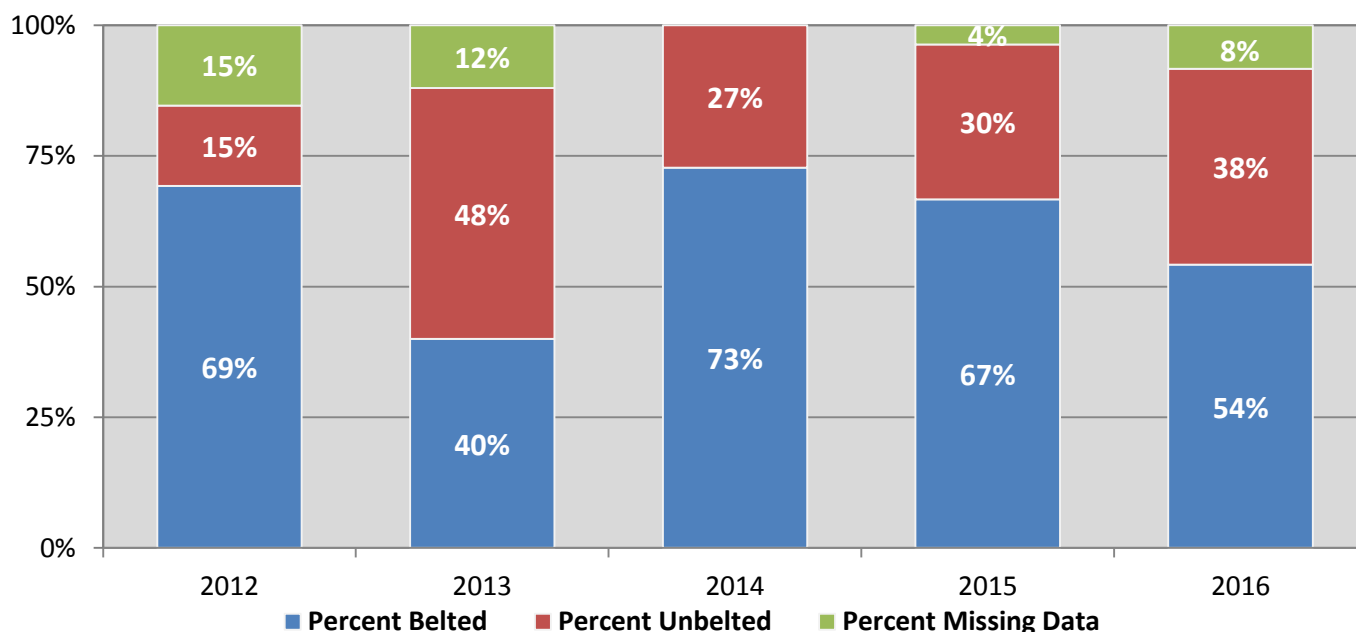
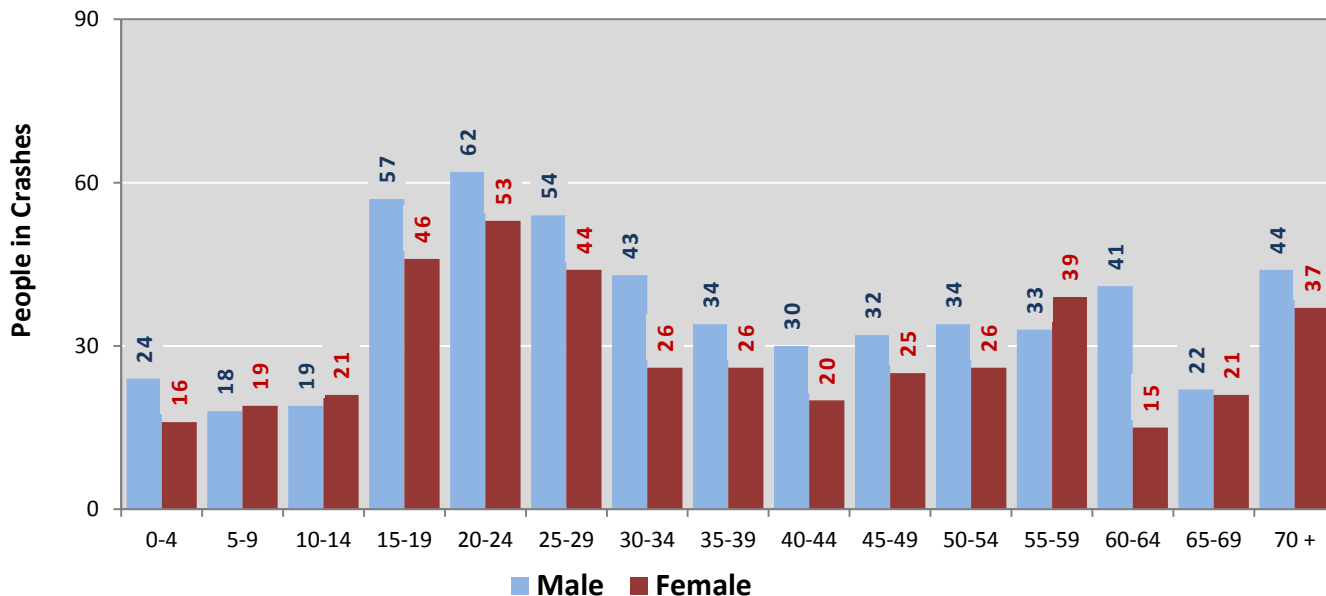
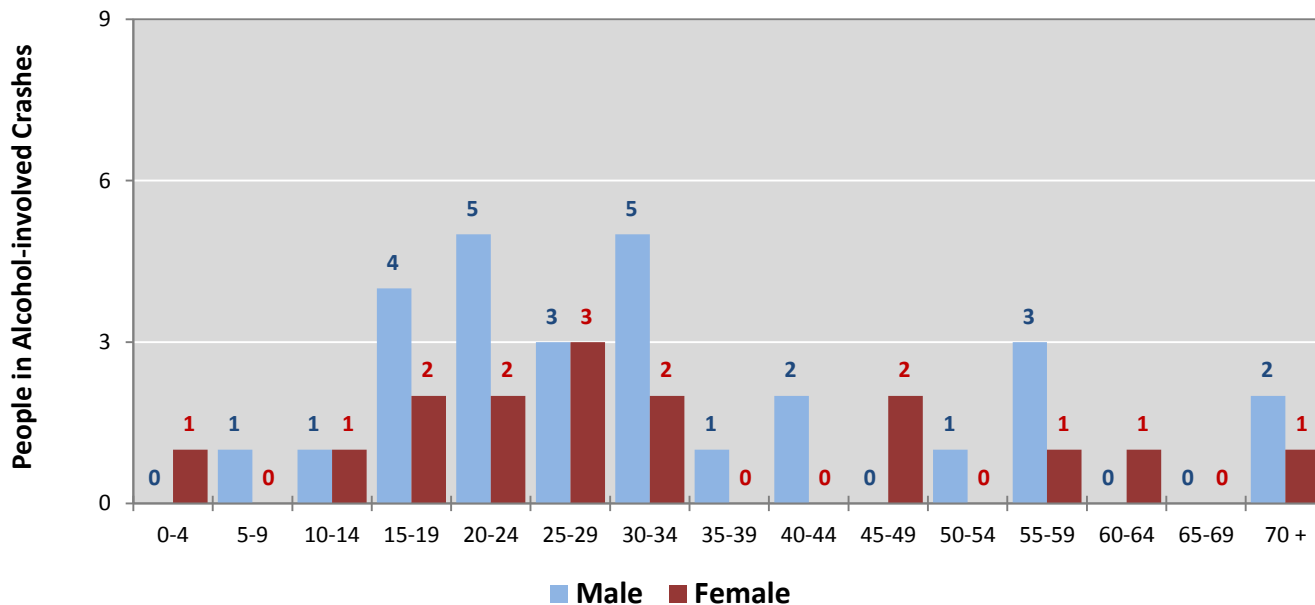


Figure 9: People in Crashes by Age Group and Sex in Luna County, 2016



* In 2016, Luna County had 92 people in crashes for which age or sex data were missing.

Figure 10: People in Alcohol-involved Crashes by Age Group and Sex in Luna County, 2016



* In 2016, Luna County had 3 people in alcohol-involved crashes for which age or sex data were missing.

**Table 18: Pedestrians and Pedalcyclists in Crashes by Age Group in
Luna County, 2012-2016**

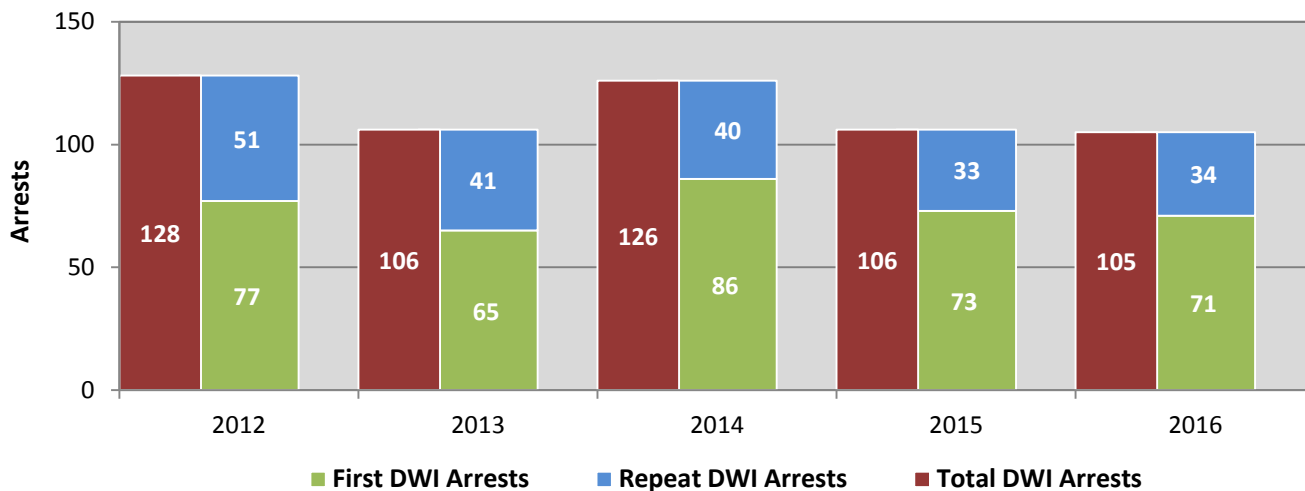
Age Groups	Pedestrians and Pedalcyclists ¹ in Crashes					5-Year Total People
	2012	2013	2014	2015	2016	
0-4	0	1	0	0	0	1
5-9	0	1	0	0	0	1
10-14	1	0	2	0	0	3
15-19	0	1	2	0	0	3
20-24	0	1	0	0	1	2
25-29	0	0	0	0	2	2
30-34	0	0	0	0	1	1
35-39	1	0	0	0	1	2
40-44	0	0	0	0	1	1
45-49	2	1	0	0	0	3
50-54	1	0	0	0	0	1
55-59	1	1	0	1	3	6
60-64	0	0	0	0	0	0
65-69	0	0	0	0	1	1
70 +	2	2	0	2	0	6
Missing Data	0	2	2	0	0	4
Total People	8	10	6	3	10	37

**Table 19: Pedestrians and Pedalcyclists in Crashes by Alcohol Involvement
and Severity of Injuries in Luna County, 2016**

Alcohol Involvement	Pedestrians and Pedalcyclists ¹ in Crashes					Total People
	Fatalities (Class K)	Suspected Serious Injuries (Class A)	Suspected Minor Injuries (Class B)	Possible Injuries (Class C)	No Apparent Injury (Class O)	
Total Pedalcyclists	1	0	3	1	0	5
Involved	1	0	0	0	0	1
Not Involved	0	0	3	1	0	4
Total Pedestrians	1	1	2	0	1	5
Involved	1	0	1	0	0	2
Not Involved	0	1	1	0	1	3
Total People	2	1	5	1	1	10

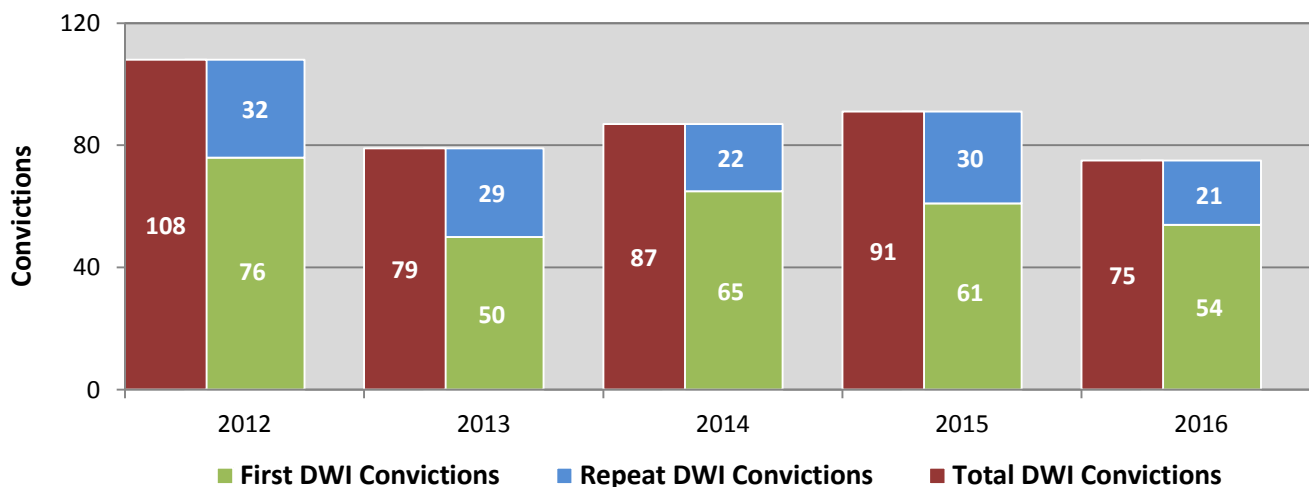
¹ Pedestrians and pedalcyclists are counted as non-motorized vehicles, when involved in a crash with a motor vehicle.

**Figure 11: DWI Arrests in Luna County,
Showing First and Repeat DWI Arrests, 2012-2016**



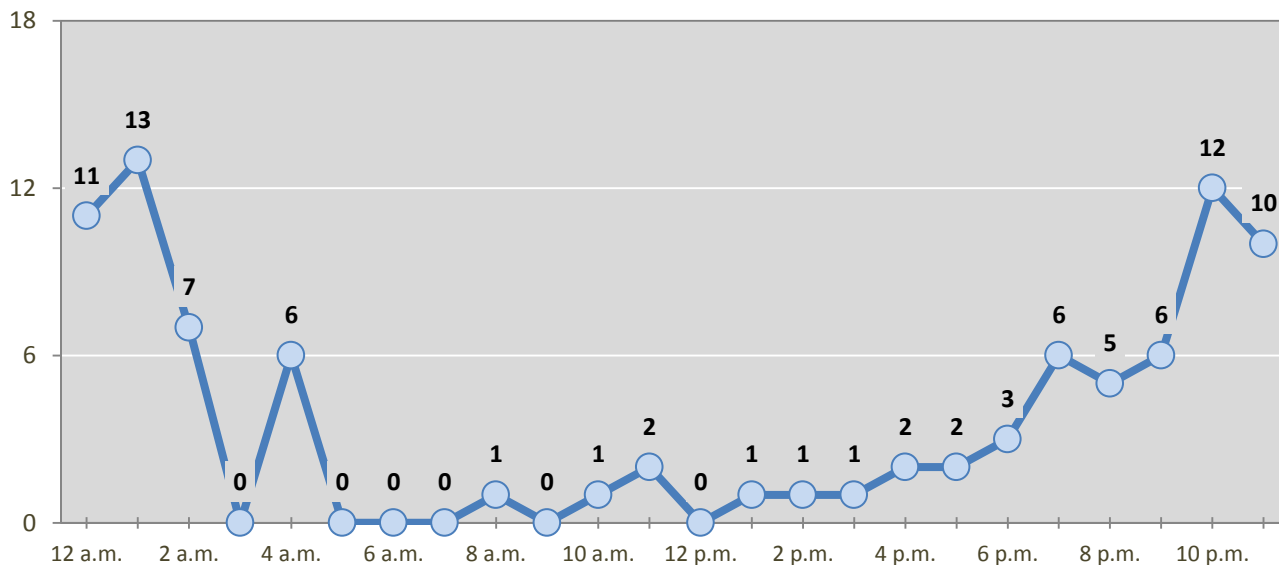
*Values are based upon the year of the arrest.

**Figure 12: DWI Convictions in Luna County,
Showing First and Repeat DWI Convictions, 2012-2016**



*Values are based upon the year of the conviction.

Figure 13: DWI Arrests by Hour in Luna County, 2016



* In 2016, Luna County had 15 arrests for which hour data were missing.

Table 20: DWI Arrests by Day of Week in Luna County, 2012-2016

Day of Week	Year					5-Year Average
	2012	2013	2014	2015	2016	
Sunday	31	24	28	17	25	25
Monday	14	8	11	12	8	11
Tuesday	4	6	10	11	8	8
Wednesday	12	6	10	11	7	9
Thursday	14	15	13	10	19	14
Friday	25	20	22	17	20	21
Saturday	28	27	32	28	18	27
Total Arrests	128	106	126	106	105	114

Table 21: Driver First DWI Arrests by Age Group in Luna County, 2012-2016

Age Groups	Driver First DWI Arrests ¹				
	2012	2013	2014	2015	2016
15-19	8	10	10	5	9
20-24	15	11	18	15	17
25-29	8	12	14	11	11
30-34	11	4	10	12	8
35-39	7	5	7	2	6
40-44	10	1	6	5	4
45-49	4	10	11	5	5
50-54	4	5	2	8	3
55-59	3	2	4	5	2
60-64	4	2	1	2	1
65-69	2	2	2	0	0
70 +	1	0	0	0	3
Missing Data	0	1	1	3	2
Total Drivers	77	65	86	73	71

¹ Values are based upon the year of the arrest.

Table 22: Driver Repeat DWI Arrests by Age Group in Luna County, 2012-2016

Age Groups	Driver Repeat DWI Arrests ¹				
	2012	2013	2014	2015	2016
15-19	1	1	1	2	2
20-24	0	3	2	3	1
25-29	5	7	9	1	4
30-34	6	8	2	5	7
35-39	4	1	5	4	1
40-44	11	4	4	2	4
45-49	6	6	5	6	0
50-54	8	4	5	7	3
55-59	4	0	1	2	4
60-64	4	2	4	1	4
65-69	2	3	0	0	3
70 +	0	1	2	0	0
Missing Data	0	1	0	0	1
Total Drivers	51	41	40	33	34

¹ Values are based upon the year of the arrest.

Table 23: Driver First DWI Convictions by Age Group in Luna County, 2012-2016

Age Groups	Driver First DWI Convictions ¹				
	2012	2013	2014	2015	2016
15-19	7	9	5	3	5
20-24	16	4	15	12	12
25-29	9	8	8	12	12
30-34	9	6	6	10	5
35-39	4	2	7	3	5
40-44	11	2	7	1	4
45-49	9	7	7	6	2
50-54	4	4	5	7	3
55-59	2	3	3	2	5
60-64	3	3	0	2	0
65-69	2	0	2	1	0
70 +	0	1	0	0	0
Missing Data	0	1	0	2	1
Total Drivers	76	50	65	61	54

¹ Values are based upon the year of the conviction.

Table 24: Driver Repeat DWI Convictions by Age Group in Luna County, 2012-2016

Age Groups	Driver Repeat DWI Convictions ¹				
	2012	2013	2014	2015	2016
15-19	1	0	2	0	1
20-24	0	2	1	4	1
25-29	4	5	5	3	2
30-34	5	3	2	3	2
35-39	2	0	3	4	0
40-44	4	5	3	2	2
45-49	5	4	3	4	2
50-54	4	3	1	5	5
55-59	2	0	0	2	2
60-64	3	2	0	2	3
65-69	2	3	1	0	1
70 +	0	1	1	1	0
Missing Data	0	1	0	0	0
Total Drivers	32	29	22	30	21

¹ Values are based upon the year of the conviction.

Table 25: Court Disposition of DWI Arrests for Luna County and the State, 2016

Court Disposition of DWI Arrest ¹	Luna County	Statewide	Percent of Statewide
Total DWI Arrests	105	10,344	1.0%
DWI Arrests Resulting in Convictions	71	5,541	1.3%
DWI Arrests Resulting in Dismissals ²	7	1,512	0.5%
DWI Arrests Awaiting Disposition	27	3,291	0.8%

¹ These are the number of DWI arrests in 2016 and whether the case resulted in a conviction or dismissal, or is still awaiting court disposition, as reported in the NM MVD Citation Tracking System (CTS) as of December 2017.

² For this table, a very small number of "not guilty" rulings may be included in the category Dismissals.

Table 26: Average Number of Days from Date of DWI Arrest to Date of Court Disposition in Luna County and the State, 2016

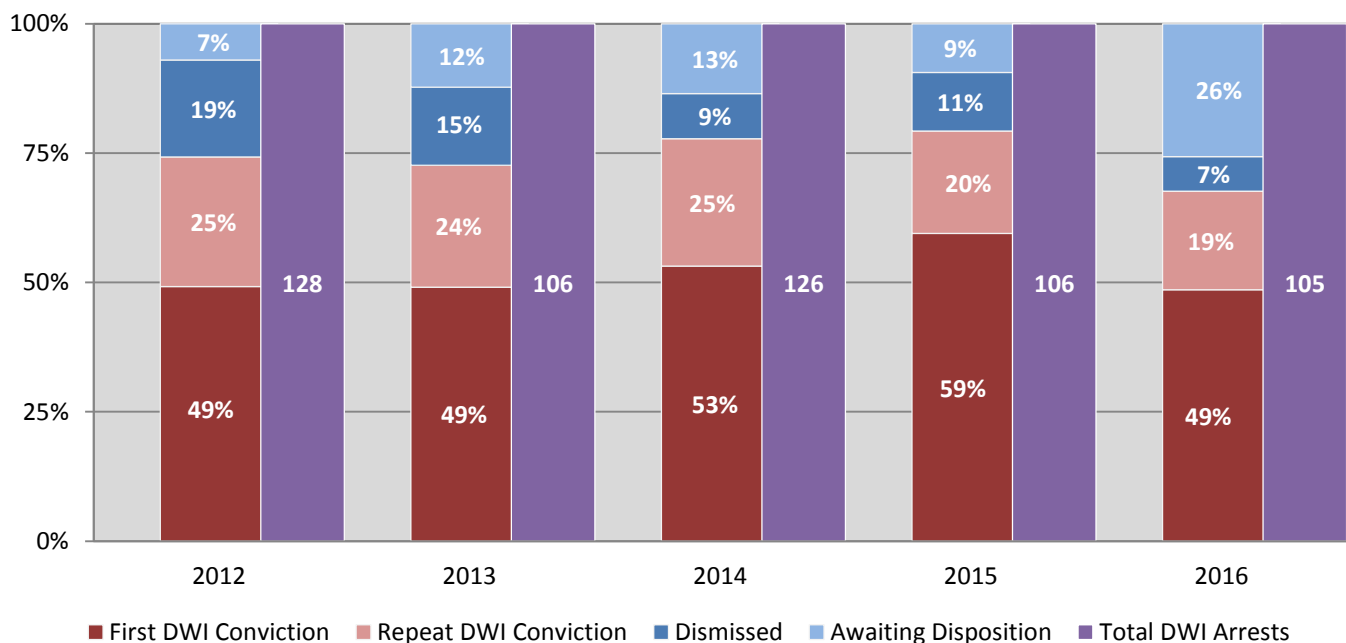
Court Disposition	Average Number of Days		Deviation from Statewide Average
	Luna County	Statewide	
DWI Conviction	116	157	-41
DWI Dismissal	135	179	-44

Table 27: Court Disposition of DWI Arrests in Luna County, 2012-2016

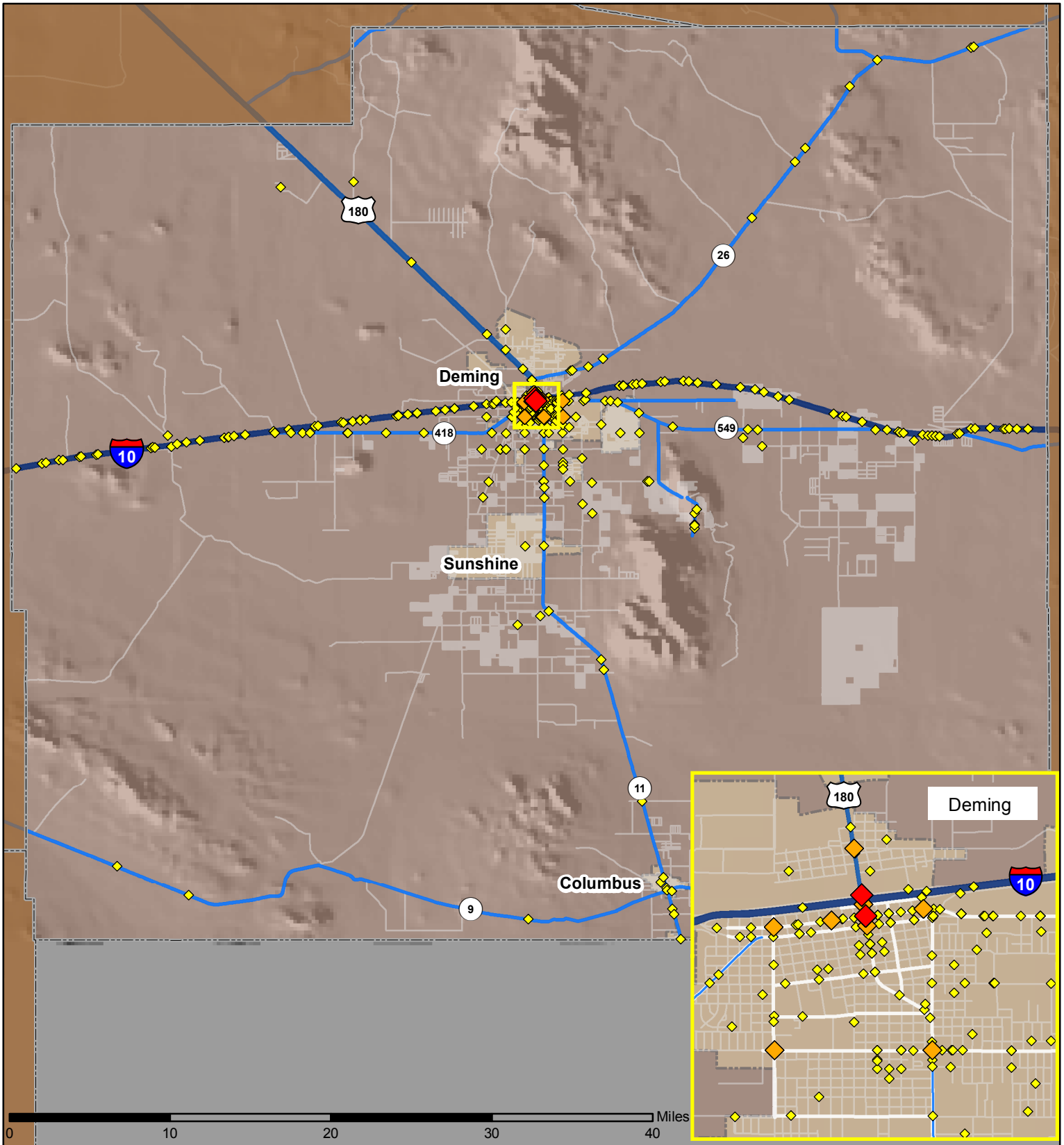
Year of DWI Arrest ¹	Court Disposition				Total DWI Arrests
	First DWI Conviction	Repeat DWI Conviction	Dismissed	Awaiting Disposition	
2012	63	32	24	9	128
2013	52	25	16	13	106
2014	67	31	11	17	126
2015	63	21	12	10	106
2016	51	20	7	27	105

¹ Values are based upon the year of the arrest.

Figure 14: Court Dispositions by Percentage of DWI Arrests in Luna County, 2012-2016



*Table 27 contains the values used to calculate percentages shown in Figure 14.



Legend



- | | |
|-------------------------|---------------------|
| Forest & Wildlife Areas | Interstate Highways |
| Reservations & Pueblos | U.S. Highways |
| County Boundaries | State Highways |
| City Boundaries | Streets & Roadways |

Crashes 2016

- 1 - 3 Crashes
- 4 - 6 Crashes
- 7 - 20 Crashes

Data Source: NMDOT Crash File 2016
<http://tru.unm.edu> CO#5801 tru@unm.edu