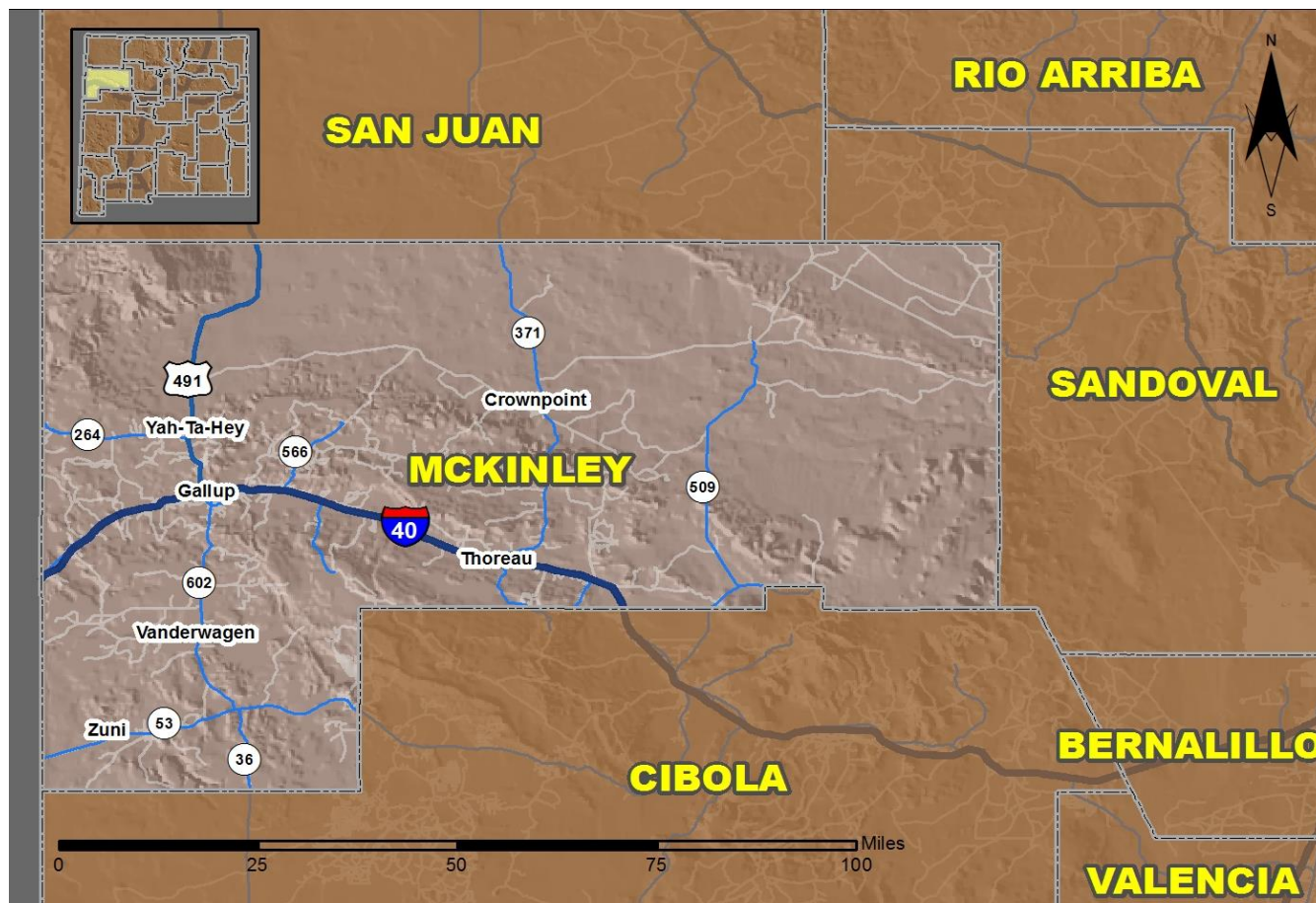


2016 Community Report

McKinley County



Produced for the New Mexico Department of Transportation,
Traffic Safety Division, Traffic Records Bureau,
Under Contract 5801 by the University of New Mexico,
Geospatial and Population Studies, Traffic Research Unit

Distributed in compliance with New Mexico Statute 66-7-214
as a reference source regarding New Mexico traffic crashes

For the purposes of this report, data are compiled by the University of New Mexico, Geospatial and Population Studies, Traffic Research Unit (TRU), on behalf of the New Mexico Department of Transportation (NMDOT). Data in this report may differ from that in other data sources, such as the Federal Fatality Analysis Reporting System (FARS), due to the timing of publications and rules for how data are compiled and maintained in Federal vs. State databases. If you have questions regarding this report, please contact the Traffic Safety Division at 505-827-0427.

<http://tru.unm.edu/Crash-Reports/Community-Reports/>

Definitions

Aggravated DWI – A driver arrested for 1) driving with a BAC of 0.16 or higher, 2) driving under the influence of alcohol or drugs and causing bodily injury to a human being as a result, or 3) driving under the influence of alcohol or drugs and refusing to submit to a BAC test at the time of arrest for DWI.

Alcohol-involved Crash – A crash for which the Uniform Crash Report indicated that 1) a DWI citation was issued, 2) alcohol was a contributing factor, or 3) a person in control of a vehicle (including a pedestrian or pedalcyclist) was suspected of being under the influence of alcohol.

Alcohol-involved Driver – A person in control of a vehicle who was cited for DWI or indicated on the Uniform Crash Report as being either suspected or determined by testing to be under the influence of alcohol. There can be multiple alcohol-involved drivers in a single alcohol-involved crash.

Crash – A reported incident on a public roadway involving one or more motor vehicles that resulted in death, personal injury, or at least \$500 in property damage. Crashes on private property (such as a parking lot) are not included.

DWI Arrest (Citation) – In this report, a DWI arrest (a.k.a. a DWI citation) is a driver arrested for either DWI or aggravated DWI. New Mexico’s legal limit for presumption of driving while intoxicated (DWI) is 0.08 for non-commercial drivers older than 21 years of age, 0.04 for commercial vehicle drivers, and 0.02 for drivers younger than 21 years of age.

DWI Conviction – A driver convicted of driving under the intoxicating influence of alcohol, narcotics, or pathogenic drugs, including aggravated DWI.

Fatal Crash – A crash in which at least one person was killed. More than one person can be killed in a single fatal crash.

Fatalities – The number of people killed in a crash. The terms “killed” and “deaths” are synonymous with “fatalities.” A fatality is crash-related if it occurs at the time of the crash or if the person(s) involved in the crash dies within 30 days.

Injury Crash – A reported crash in which at least one person was injured. Injury crashes involve at least one suspected serious injury (Class A), suspected minor injury (Class B), or possible injury (Class C). Fatal crashes are not included.

Missing Data – An indication that the applicable field on the UCR form was left blank or contained an invalid code. Starting with crashes that occurred in 2012, improvements in the identification of missing data in the NMDOT crash database led to an increase in the reported amount of missing data.

Pedalcyclist – A person riding a mechanism of transport that is powered solely by pedals (a.k.a. bicyclist).

Pedestrian – A person on foot, walking, running, jogging, hiking, sitting or lying down who is involved in a motor vehicle traffic crash.

Sources

Crash Data – New Mexico Department of Transportation, Traffic Safety Division, Traffic Records Bureau, Traffic Crash Database, as of the report date below. Crash data are compiled using NMDOT Uniform Crash Reports (UCR), submitted by law enforcement agencies in the state, for any incident on a public roadway involving one or more motor vehicles that resulted in death, injury, or at least \$500 in property damage. These reports are processed by the NMDOT Traffic Records Bureau and analyzed by the University of New Mexico, Geospatial and Population Studies, Traffic Research Unit (TRU).

DWI Citation Tracking System (CTS) – New Mexico Taxation and Revenue Department (NM TRD), Motor Vehicle Division (MVD), DWI Citation Tracking System (CTS), as of December 2017. Repeat offenders are identified by the combination of account key, arrest date, and citation number. County data are based upon the county where the arrest took place. City data are based upon the city where the offender resides.

Urban Areas – New Mexico Department of Transportation, Asset Management and Planning, 2010 U.S. Census Urbanized Area Boundaries, NMDOT-Adjusted, and U.S. Census Urban Clusters, August 21, 2013. In crashes before 2013, “urban” was defined as a town or city with a population of at least 2,500 people.

Table 1: Total Crashes and Alcohol-involved Crashes by Crash Severity in McKinley County, 2007-2016

Year	Total Crashes				Alcohol-involved Crashes			
	Fatal	Injury	Property Damage Only	Total	Fatal	Injury	Property Damage Only	Total
2007	34	356	834	1,224	19	65	76	160
2008	27	302	849	1,178	18	52	72	142
2009	31	333	954	1,318	23	64	83	170
2010	21	338	939	1,298	9	54	65	128
2011	27	332	973	1,332	17	46	75	138
2012	24	335	994	1,353	17	66	69	152
2013	23	283	904	1,210	14	57	82	153
2014	41	334	880	1,255	25	69	83	177
2015	18	361	976	1,355	7	82	91	180
2016	22	348	938	1,308	11	65	79	155

Figure 1: Alcohol-involved Fatal and Injury Crashes Compared with Non-alcohol-involved Fatal and Injury Crashes in McKinley County, 2007-2016

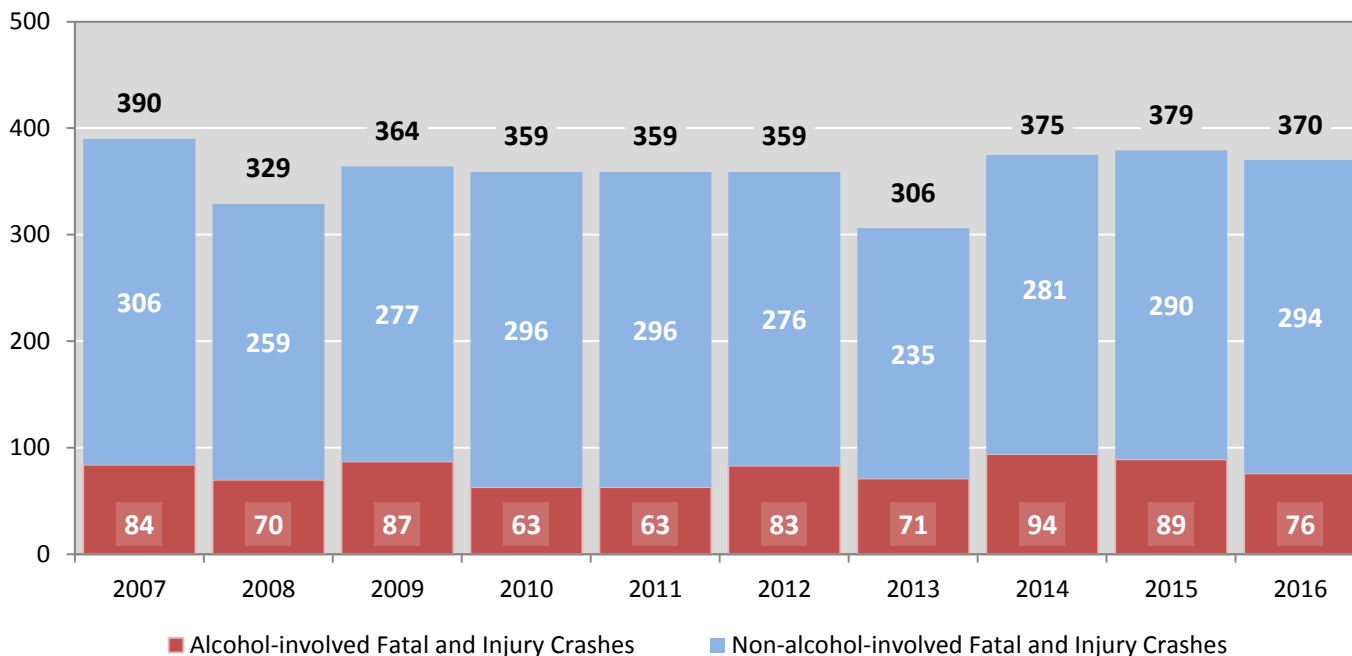


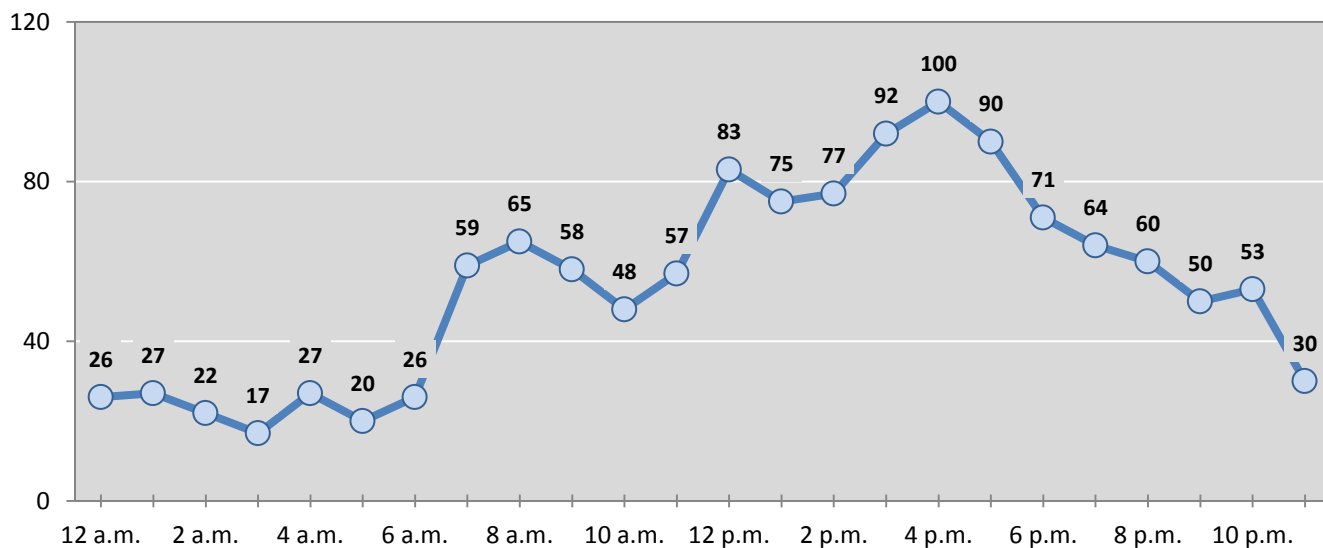
Table 2: Crashes by Month in McKinley County, 2012-2016

Month	Crashes					5-Year Average
	2012	2013	2014	2015	2016	
January	116	122	93	124	117	114
February	124	120	114	117	138	123
March	86	85	97	85	89	88
April	88	90	98	87	93	91
May	106	61	95	101	97	92
June	99	87	110	113	105	103
July	91	96	93	97	87	93
August	98	108	106	100	108	104
September	119	93	109	83	111	103
October	115	102	107	117	99	108
November	127	115	88	155	126	122
December	184	131	145	176	138	155
Total Crashes	1,353	1,210	1,255	1,355	1,308	1,296

Table 3: Alcohol-involved Crashes by Month in McKinley County, 2012-2016

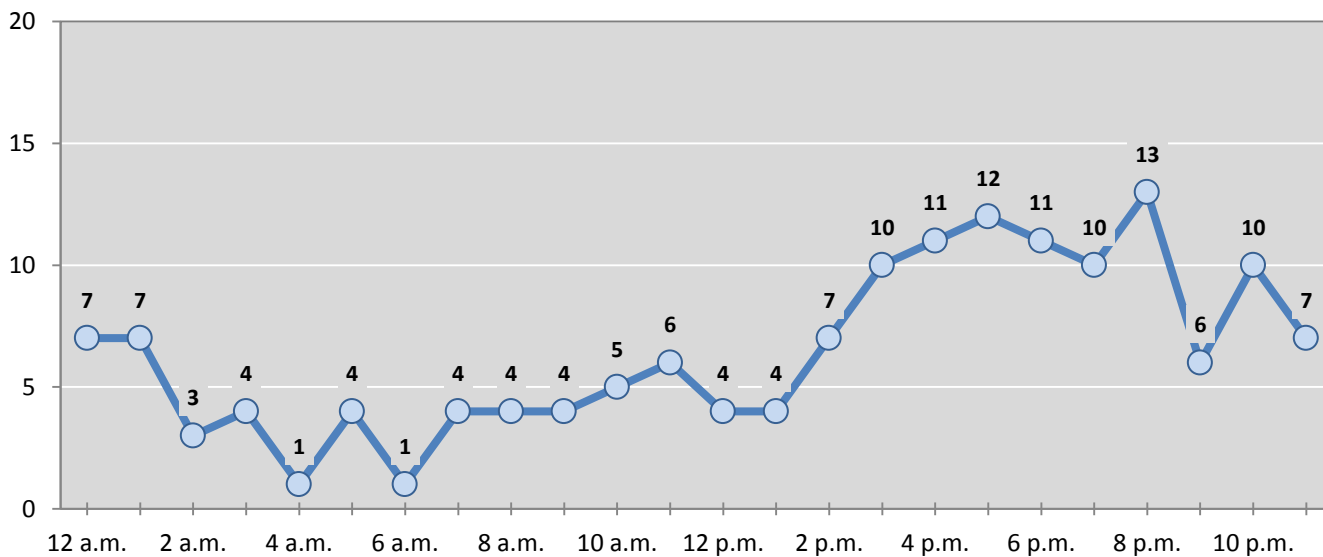
Month	Alcohol-involved Crashes					5-Year Average
	2012	2013	2014	2015	2016	
January	14	15	12	17	12	14
February	8	8	15	10	18	12
March	13	14	15	12	12	13
April	16	8	19	7	9	12
May	13	14	17	17	17	16
June	7	13	13	14	10	11
July	6	15	14	19	11	13
August	15	15	16	7	13	13
September	20	9	16	20	9	15
October	11	15	16	17	16	15
November	13	10	13	15	10	12
December	16	17	11	25	18	17
Total Crashes	152	153	177	180	155	163

Figure 2: Crashes by Hour in McKinley County, 2016



* In 2016, McKinley County had 11 crashes for which hour data were missing.

Figure 3: Alcohol-involved Crashes by Hour in McKinley County, 2016



* In 2016, McKinley County had 0 alcohol-involved crashes for which hour data were missing.

Table 4: Alcohol-involved Crashes by Day of Week in McKinley County, 2012-2016

Day of Week	Alcohol-involved Crashes					5-Year Average
	2012	2013	2014	2015	2016	
Sunday	19	23	28	21	22	23
Monday	20	15	12	19	23	18
Tuesday	10	24	30	28	15	21
Wednesday	16	19	20	17	10	16
Thursday	22	17	22	20	25	21
Friday	24	29	27	36	31	29
Saturday	41	26	38	39	29	35
Total Crashes	152	153	177	180	155	163

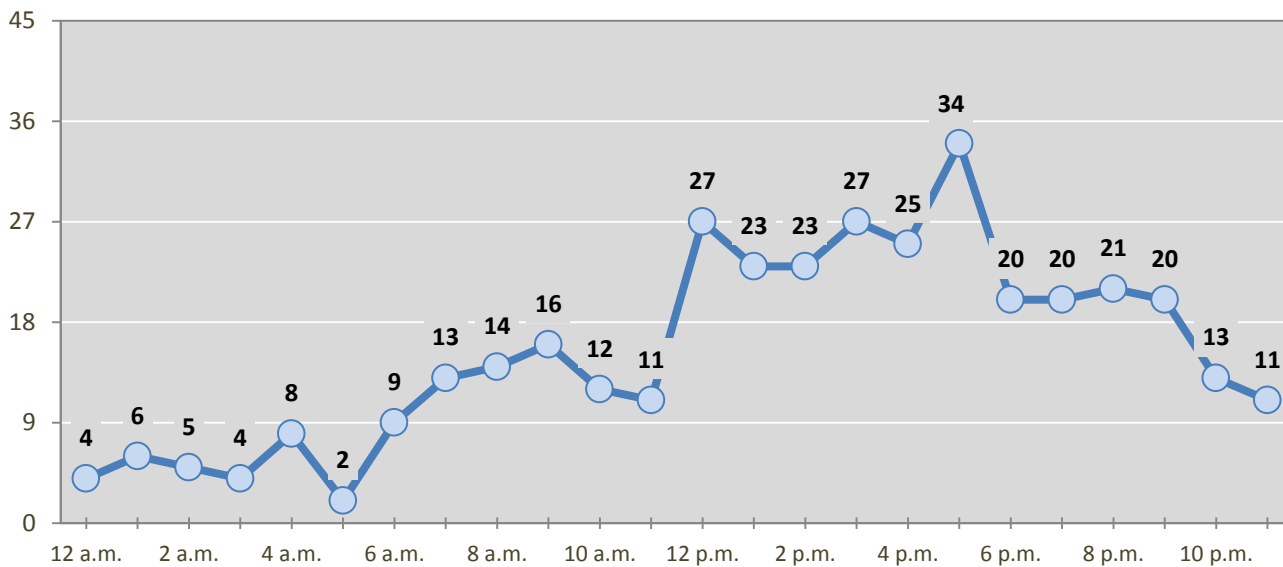
Table 5: Fatal and Injury Crashes by Day of Week in McKinley County, 2012-2016

Day of Week	Fatal and Injury Crashes					5-Year Average
	2012	2013	2014	2015	2016	
Sunday	45	29	48	35	45	40
Monday	52	37	48	55	58	50
Tuesday	41	41	51	63	43	48
Wednesday	47	56	46	48	48	49
Thursday	44	39	47	44	59	47
Friday	62	45	69	75	61	62
Saturday	68	59	66	59	56	62
Total Crashes	359	306	375	379	370	358

Table 6: Pedestrian and Pedalcyclist Crashes by Day of Week in McKinley County, 2012-2016

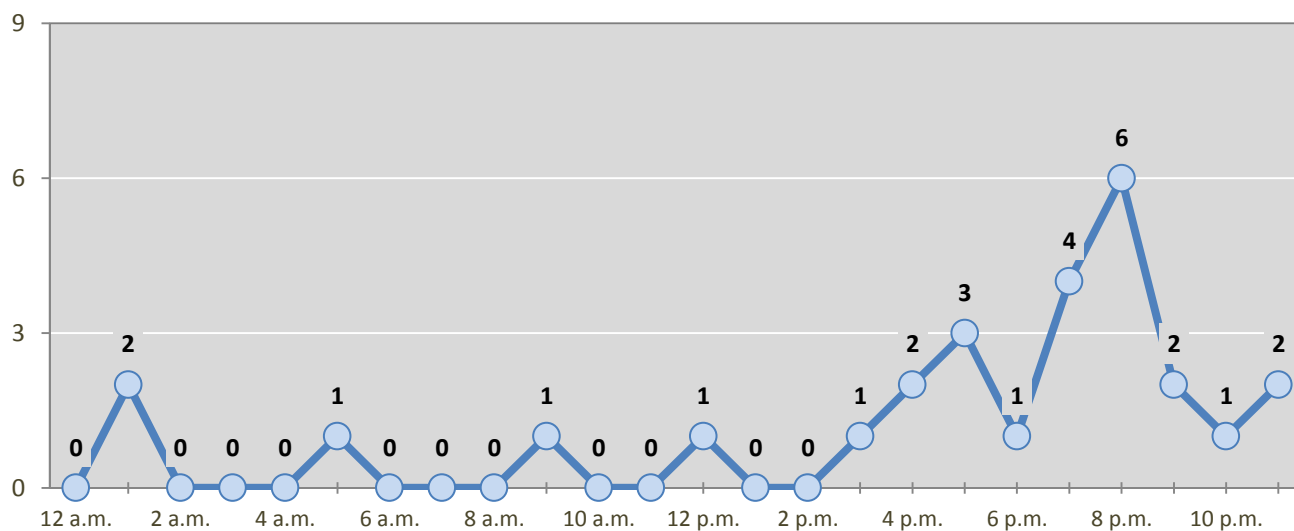
Day of Week	Pedestrian and Pedalcyclist Crashes					5-Year Average
	2012	2013	2014	2015	2016	
Sunday	4	1	6	5	1	3
Monday	6	4	9	7	3	6
Tuesday	4	8	8	7	2	6
Wednesday	5	4	2	3	7	4
Thursday	7	4	6	5	6	6
Friday	4	10	6	6	3	6
Saturday	6	3	9	7	6	6
Total Crashes	36	34	46	40	28	37

Figure 4: Fatal and Injury Crashes by Hour in McKinley County, 2016



* In 2016, McKinley County had 2 crashes for which hour data were missing.

Figure 5: Pedestrian and Pedalcyclist Crashes by Hour in McKinley County, 2016



* In 2016, McKinley County had 1 crashes for which hour data were missing.

Table 7: Severity of Injuries to People in Crashes by Rural and Urban Location in McKinley County, 2016

Urban and Rural Locations by Alcohol-involvement	People in Crashes by Severity of Injuries					Total People
	Fatalities (Class K)	Suspected Serious Injuries (Class A)	Suspected Minor Injuries (Class B)	Possible Injuries (Class C)	No Apparent Injuries (Class O)	
People in Alcohol-involved Crashes	11	14	36	54	290	405
Urban	4	7	20	40	205	276
Rural Non-Interstate	7	7	10	11	79	114
Rural Interstate	0	0	6	3	6	15
People in Crashes	22	32	142	385	3,005	3,586
Urban	5	13	69	264	2,248	2,599
Rural Non-Interstate	12	12	34	68	403	529
Rural Interstate	5	7	39	53	354	458
Percent in Alcohol-involved Crashes	50%	44%	25%	14%	10%	11%

Table 8: Total Crashes by Roadway System and Crash Severity in McKinley County, 2012-2016

Crash Severity by System	Crashes by Year					5-Year Average
	2012	2013	2014	2015	2016	
Total Rural Interstate	248	189	206	188	188	204
Fatal Crash	8	6	11	3	5	7
Injury Crash	57	46	52	45	54	51
Property Damage Only Crash	183	137	143	140	129	146
Total Rural Non-Interstate	368	217	232	218	236	254
Fatal Crash	13	12	16	11	12	13
Injury Crash	102	57	83	72	71	77
Property Damage Only Crash	253	148	133	135	153	164
Total Urban	737	804	817	949	884	838
Fatal Crash	3	5	14	4	5	6
Injury Crash	176	180	199	244	223	204
Property Damage Only Crash	558	619	604	701	656	628

Table 9: Total Crashes by Crash Classification in McKinley County, 2012-2016

Crash Classification	Total Crashes by Year					5-Year Average
	2012	2013	2014	2015	2016	
Animal	71	62	73	59	52	63
Fixed Object	177	154	137	193	173	167
Other (Non-Collision)	51	35	31	38	49	41
Other (Object)	47	51	45	47	42	46
Other Vehicle	699	641	686	797	803	725
Overturn/Rollover	142	111	136	31	61	96
Parked Vehicle	91	84	72	61	62	74
Pedalcyclist	5	4	8	5	2	5
Pedestrian	32	30	39	35	26	32
Railroad Train	2	1	1	1	0	1
Rollover	0	0	1	57	22	16
Vehicle on Other Road	10	14	8	13	14	12
Missing Data	26	23	18	18	2	17
Total Crashes	1,353	1,210	1,255	1,355	1,308	1,296

Table 10: Vehicles in Crashes by Vehicle Type in McKinley County, 2012-2016

Vehicle Type ¹	Vehicles in Crashes by Vehicle Type					5-Year Average
	2012	2013	2014	2015	2016	
Bus	5	1	7	6	1	4
Motorcycle	22	20	22	19	12	19
Passenger	882	787	772	912	948	860
Pedalcyclist	6	4	8	5	2	5
Pedestrian	32	31	39	35	27	33
Pickup	623	531	549	558	513	555
Semi	190	109	148	144	165	151
Van/SUV/4WD	315	355	367	439	461	387
Other Vehicle	22	53	16	40	13	29
Missing Data	170	180	234	196	140	184
Total Vehicles	2,267	2,071	2,162	2,354	2,282	2,227

¹ Pedestrians and pedalcyclists are counted as non-motorized vehicles, when involved in a crash with a motor vehicle. See Page 17 for data on drivers of non-motorized vehicles in crashes (i.e. pedestrians and pedalcyclists).

Table 11: Motor Vehicle Drivers in Crashes by Vehicle Type and Age Group in McKinley County, 2016

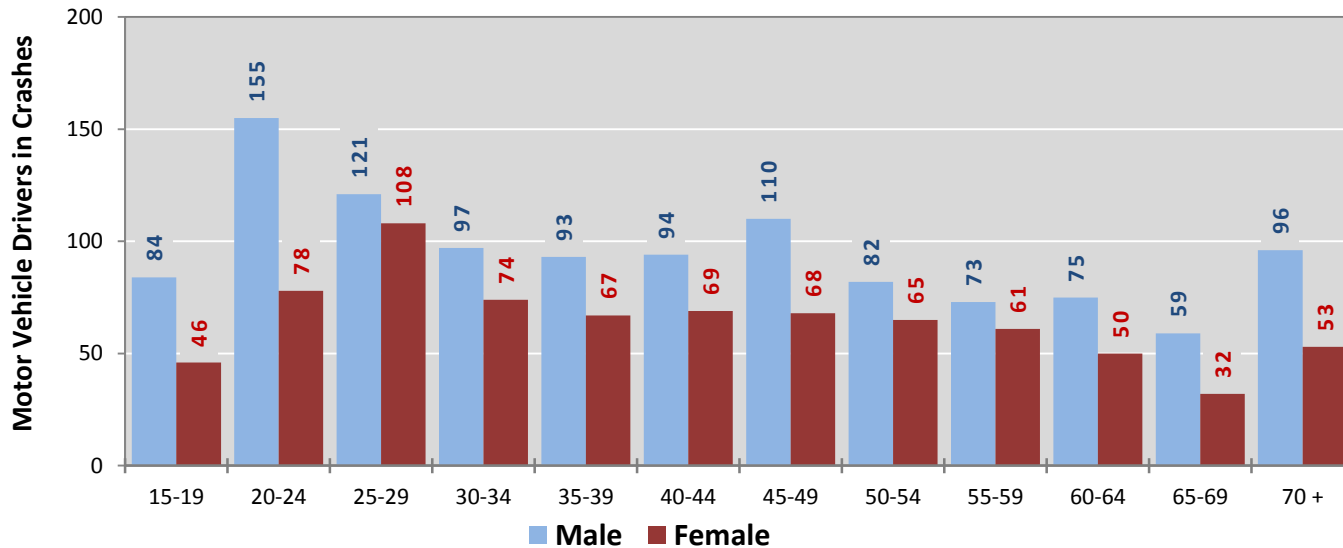
Age Groups	Motor Vehicle ¹ Drivers by Vehicle Type and Age Group								Total Drivers
	Bus	Motor-cycle	Passenger	Pickup	Semi	Van 4WD SUV	Other Vehicle	Missing Data	
15-19	0	1	81	23	0	22	1	2	130
20-24	0	0	145	39	14	31	1	3	233
25-29	0	1	124	43	8	50	1	2	229
30-34	0	1	80	41	9	37	1	2	171
35-39	0	1	66	29	14	49	2	0	161
40-44	0	1	54	36	22	48	0	2	163
45-49	1	2	57	50	29	38	0	1	178
50-54	0	1	56	45	13	29	1	2	147
55-59	0	3	46	39	21	25	0	1	135
60-64	0	0	45	38	15	25	0	2	125
65-69	0	0	32	27	9	21	2	0	91
70 +	0	1	55	53	2	32	3	3	149
Missing Data	0	0	107	50	9	54	1	120	341
Total Drivers	1	12	948	513	165	461	13	140	2,253

Table 12: Alcohol-involved Motor Vehicle Drivers in Crashes by Vehicle Type and Age Group in McKinley County, 2016

Age Groups	Alcohol-involved Motor Vehicle ¹ Drivers by Vehicle Type and Age Group								Total Drivers
	Bus	Motor-cycle	Passenger	Pickup	Semi	Van 4WD SUV	Other Vehicle	Missing Data	
15-19	0	0	3	3	0	0	0	0	6
20-24	0	0	17	5	1	4	0	1	28
25-29	0	0	21	6	0	8	0	1	36
30-34	0	0	9	3	0	2	0	0	14
35-39	0	0	7	2	0	2	0	0	11
40-44	0	0	7	2	0	3	0	0	12
45-49	0	0	2	4	0	1	0	0	7
50-54	0	0	4	2	0	0	0	0	6
55-59	0	0	1	2	0	0	0	0	3
60-64	0	0	1	2	0	0	0	0	3
65-69	0	0	1	2	0	0	0	0	3
70 +	0	0	1	0	0	0	0	0	1
Missing Data	0	0	5	4	0	1	0	1	11
Total Drivers	0	0	79	37	1	21	0	3	141

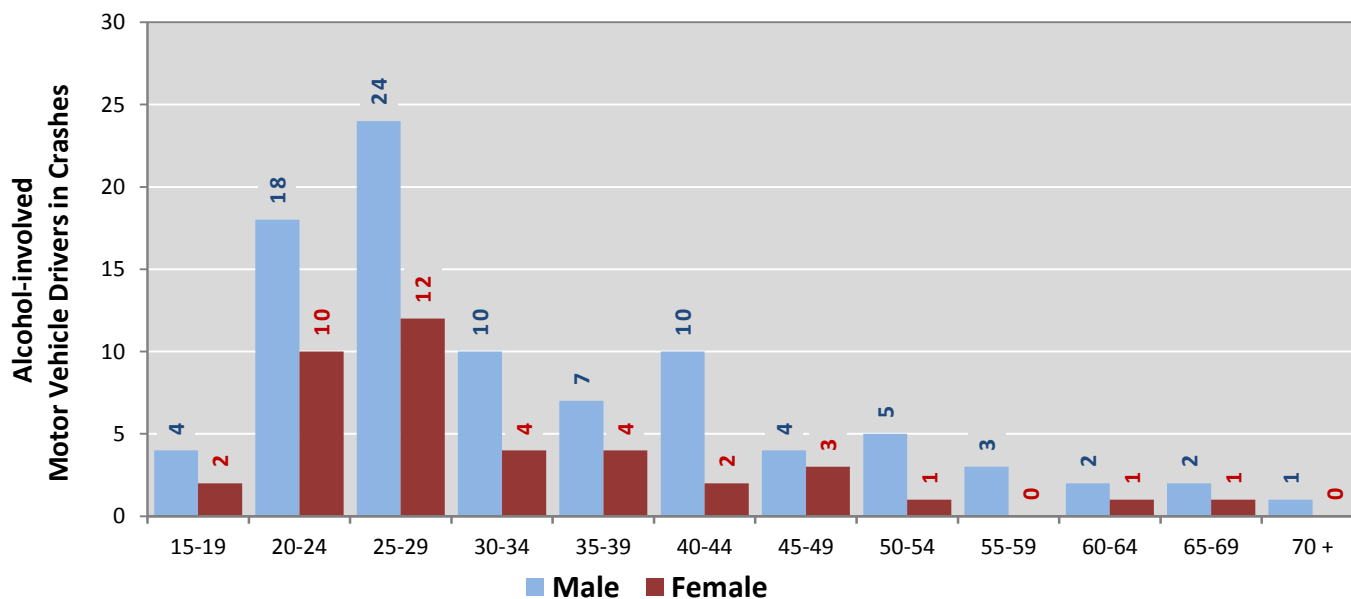
¹ See Page 17 for data on drivers of non-motorized vehicles in crashes (i.e. pedestrians and pedalcyclists).

Figure 6: Motor Vehicle Drivers in Crashes by Age Group and Sex in McKinley County, 2016



* In 2016, McKinley County had 343 drivers in crashes for which age or sex data were missing.

Figure 7: Alcohol-involved Motor Vehicle Drivers in Crashes by Age Group and Sex in McKinley County, 2016



* In 2016, McKinley County had 11 drivers in crashes for which age or sex data were missing.

Table 13: Alcohol-involved Motor Vehicle Drivers Under 21 (Ages 15-20) in Crashes in McKinley County, 2012-2016

Age ¹	Year					5-Year Total
	2012	2013	2014	2015	2016	
15	0	0	0	0	0	0
16	0	0	1	0	1	2
17	1	2	0	1	0	4
18	4	2	4	0	2	12
19	3	4	3	1	3	14
20	2	4	8	5	3	22
Total Drivers	10	12	16	7	9	54

Table 14: Motor Vehicle Drivers Under 21 (Ages 15-20) in Crashes by Age, Sex and Alcohol-involvement in McKinley County, 2016

Age ¹	Total Drivers				Alcohol-involved Drivers			
	Sex		Total Drivers	Percent of Total	Sex		Total Drivers	Percent of Total
	Male	Female			Male	Female		
15	3	2	5	3%	0	0	0	0%
16	9	7	16	8%	0	1	1	11%
17	22	5	27	14%	0	0	0	0%
18	23	18	41	21%	2	0	2	22%
19	27	14	41	21%	2	1	3	33%
20	41	20	61	32%	1	2	3	33%
Total Drivers	125	66	191	100%	5	4	9	100%

¹ For analysis of drivers under age 21, when the driver age or sex are not identified on the crash report (typically hit-and-run drivers), the driver data are considered unreliable and are excluded from the analysis.

**Table 15: Frequency of Contributing Factors in Crashes
by Crash Severity in McKinley County, 2016**

Contributing Factors	Frequency of Contributing Factor ¹ by Crash Severity			
	Frequency in Fatal Crashes	Frequency in Injury Crashes	Frequency in Property Damage Only Crashes	Frequency in All Crashes
Human	40	627	1,378	2,045
Driver Inattention	6	181	456	643
Failed to Yield Right of Way	1	62	102	165
Alcohol Involved	11	67	80	158
Following Too Closely	0	40	111	151
Excessive Speed	4	54	89	147
Other Improper Driving	2	39	89	130
Speed Too Fast for Conditions	2	37	82	121
Made Improper Turn	2	33	73	108
Avoid No Contact - Vehicle	0	17	81	98
Drove Left Of Center	4	21	26	51
Improper Lane Change	0	10	39	49
Improper Overtaking	0	8	41	49
Disregarded Traffic Signal	1	19	23	43
Improper Backing	0	0	36	36
Avoid No Contact - Other	0	8	22	30
Pedestrian Error	4	13	1	18
Passed Stop Sign	0	6	8	14
Drug Involved	2	5	5	12
Vehicle Skidded Before Brake	1	2	9	12
Cell Phone	0	1	2	3
Failed to Yield to Police Vehicle	0	2	1	3
Failed to Yield to Emergency Vehicle	0	2	0	2
Driverless Moving Vehicle	0	0	1	1
Texting	0	0	1	1
High Speed Pursuit	0	0	0	0
Vehicle	0	11	37	48
Other Mechanical Defect	0	7	20	27
Defective Tires	0	3	10	13
Inadequate Brakes	0	1	6	7
Defective Steering	0	0	1	1
Environment	0	1	14	15
Road Defect	0	1	13	14
Traffic Control Not Functioning	0	0	1	1
Low Visibility Due to Smoke	0	0	0	0
Other	9	267	721	997
None	4	167	518	689
Other - No Driver Error	5	100	203	308

¹ Multiple contributing factors may be reported for any vehicle in a crash.

Table 16: People in Crashes by Crash Classification and Severity of Injuries in McKinley County, 2016

Crash Classification	People in Crashes by Severity of Injuries					Total People
	Fatalities (Class K)	Suspected Serious Injuries (Class A)	Suspected Minor Injuries (Class B)	Possible Injuries (Class C)	No Apparent Injuries (Class O)	
Animal	0	0	3	5	79	87
Fixed Object	2	7	20	30	195	254
Other (Non-Collision)	0	1	4	3	77	85
Other (Object)	0	0	2	5	87	94
Other Vehicle	6	16	78	312	2,245	2,657
Overturn/Rollover	1	1	13	16	68	99
Parked Vehicle	0	0	3	2	146	151
Pedalcyclist	0	0	1	0	3	4
Pedestrian	8	3	8	4	46	69
Railroad Train	0	0	0	0	0	0
Rollover	5	2	9	6	19	41
Vehicle on Other Road	0	2	1	2	36	41
Missing Data	0	0	0	0	4	4
Total People	22	32	142	385	3,005	3,586

Table 17: Killed or Injured Unbelted People in Crashes by Sex and Age Group in McKinley County, 2016

Age Groups	Unbelted People Killed or Injured ^{1,2}				Total People
	Male	Percent of Male	Female	Percent of Female	
0-4	0	0%	1	4%	1
5-9	0	0%	1	4%	1
10-14	0	0%	1	4%	1
15-19	2	9%	4	15%	6
20-24	3	13%	5	19%	8
25-29	6	26%	3	12%	9
30-34	3	13%	2	8%	5
35-39	1	4%	2	8%	3
40-44	1	4%	0	0%	1
45-49	1	4%	0	0%	1
50-54	3	13%	1	4%	4
55-59	1	4%	0	0%	1
60-64	0	0%	3	12%	3
65-69	1	4%	1	4%	2
70 +	1	4%	1	4%	2
Missing Data	0	0%	1	4%	1
Total People	23	100%	26	100%	49

¹ People injured are in one of three categories: suspected serious injury, suspected minor injury, or possible injury.

² Excludes people in or on buses, heavy trucks, motorcycles, or ATVs.

Figure 8: Seatbelt Use by People in Crashes with Fatal or Suspected Serious Injuries in McKinley County, 2012-2016

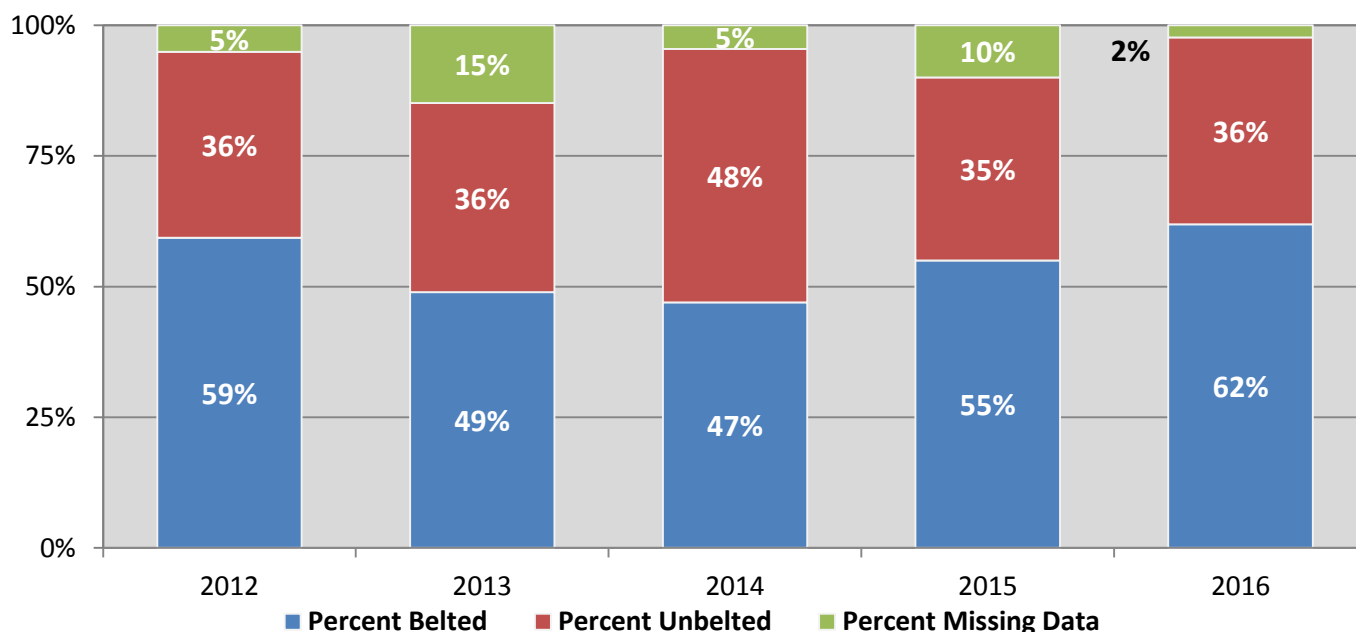
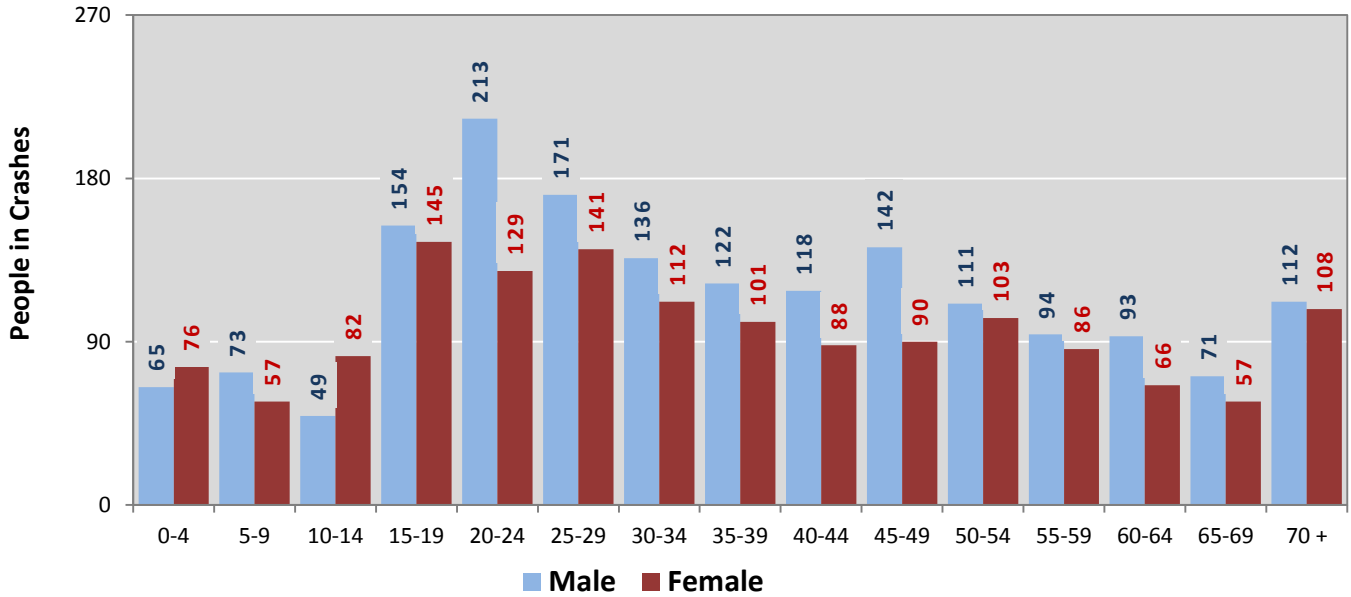
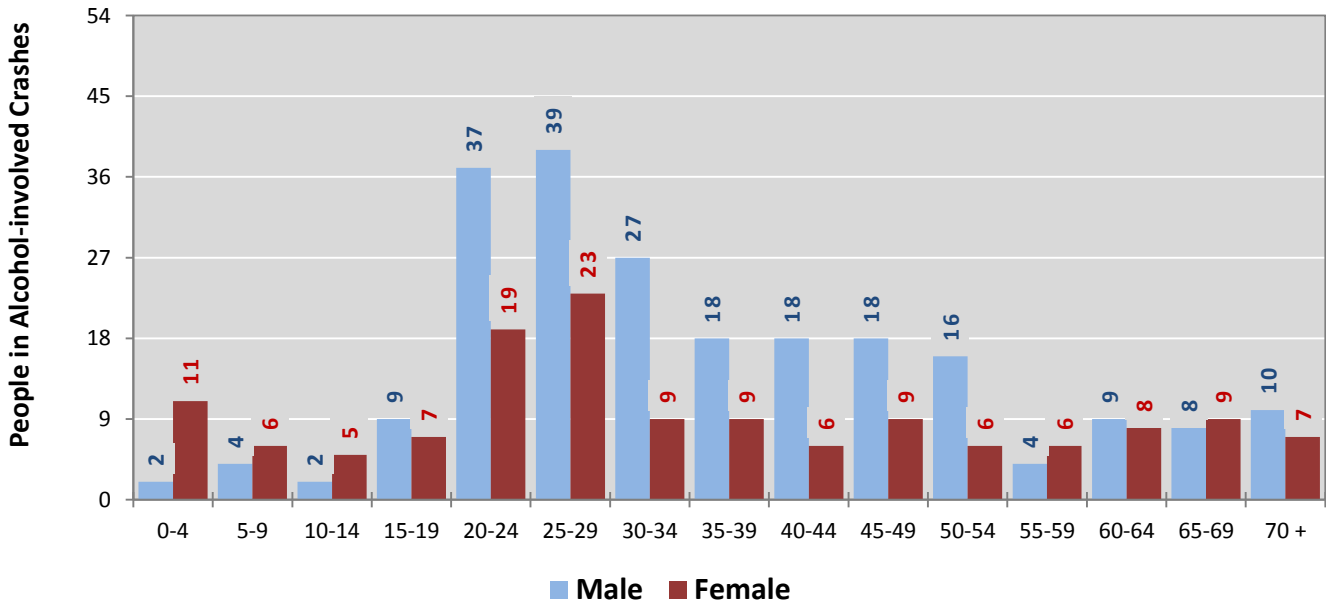


Figure 9: People in Crashes by Age Group and Sex in McKinley County, 2016



* In 2016, McKinley County had 421 people in crashes for which age or sex data were missing.

Figure 10: People in Alcohol-involved Crashes by Age Group and Sex in McKinley County, 2016



* In 2016, McKinley County had 44 people in alcohol-involved crashes for which age or sex data were missing.

Table 18: Pedestrians and Pedalcyclists in Crashes by Age Group in McKinley County, 2012-2016

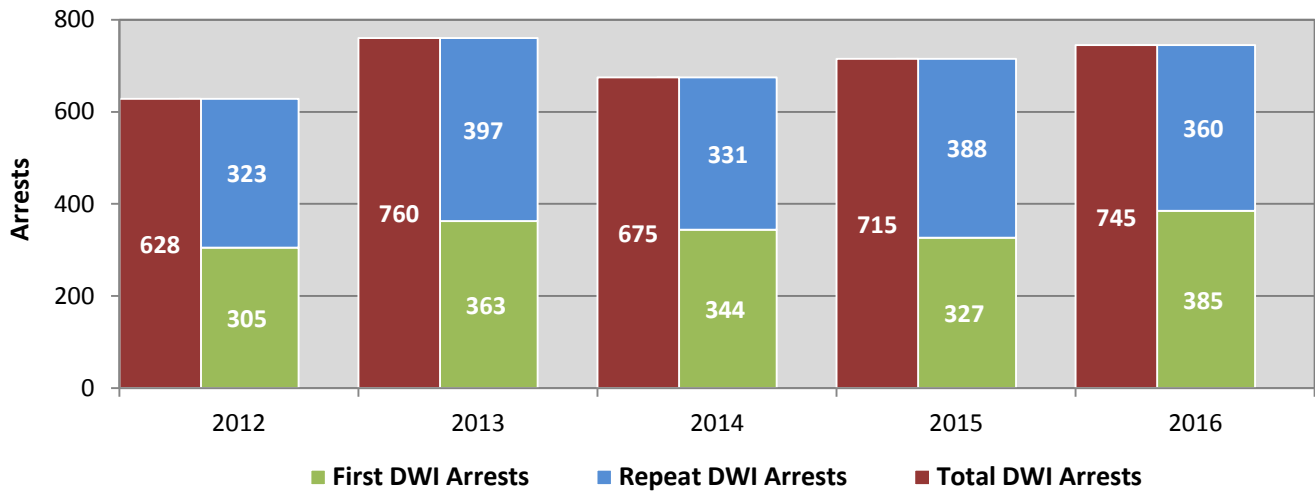
Age Groups	Pedestrians and Pedalcyclists ¹ in Crashes					5-Year Total People
	2012	2013	2014	2015	2016	
0-4	1	1	0	0	0	2
5-9	2	1	0	2	0	5
10-14	0	0	3	1	0	4
15-19	2	2	3	2	0	9
20-24	8	5	5	2	4	24
25-29	1	5	6	5	7	24
30-34	3	3	10	1	2	19
35-39	4	7	1	6	1	19
40-44	3	1	4	5	1	14
45-49	4	4	4	2	3	17
50-54	2	0	3	9	3	17
55-59	3	2	0	1	0	6
60-64	1	1	1	0	1	4
65-69	0	1	2	0	2	5
70 +	2	0	0	1	1	4
Missing Data	2	2	5	3	4	16
Total People	38	35	47	40	29	189

Table 19: Pedestrians and Pedalcyclists in Crashes by Alcohol Involvement and Severity of Injuries in McKinley County, 2016

Alcohol Involvement	Pedestrians and Pedalcyclists ¹ in Crashes					Total People
	Fatalities (Class K)	Suspected Serious Injuries (Class A)	Suspected Minor Injuries (Class B)	Possible Injuries (Class C)	No Apparent Injury (Class O)	
Total Pedalcyclists	0	0	1	0	1	2
Involved	0	0	0	0	0	0
Not Involved	0	0	1	0	1	2
Total Pedestrians	8	3	8	4	4	27
Involved	7	2	4	2	2	17
Not Involved	1	1	4	2	2	10
Total People	8	3	9	4	5	29

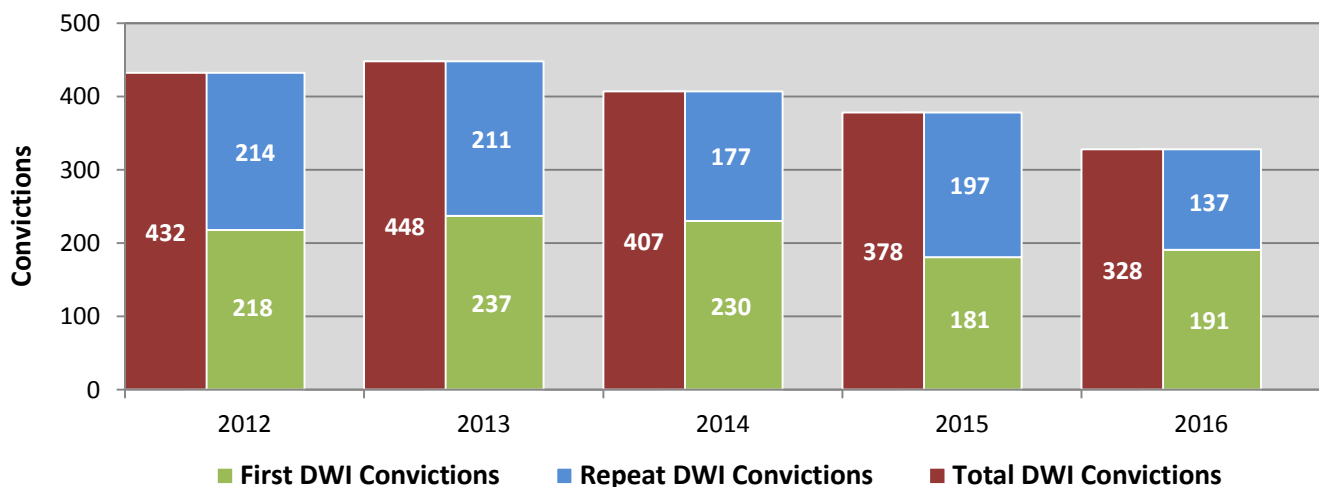
¹ Pedestrians and pedalcyclists are counted as non-motorized vehicles, when involved in a crash with a motor vehicle.

**Figure 11: DWI Arrests in McKinley County,
Showing First and Repeat DWI Arrests, 2012-2016**



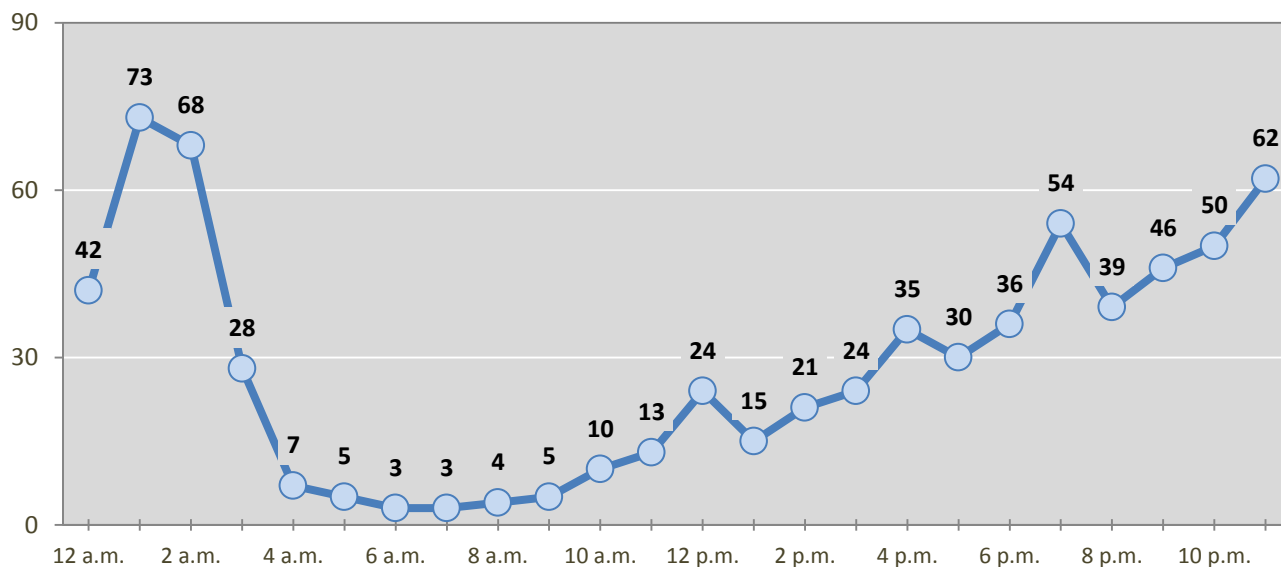
*Values are based upon the year of the arrest.

**Figure 12: DWI Convictions in McKinley County,
Showing First and Repeat DWI Convictions, 2012-2016**



*Values are based upon the year of the conviction.

Figure 13: DWI Arrests by Hour in McKinley County, 2016



* In 2016, McKinley County had 48 arrests for which hour data were missing.

Table 20: DWI Arrests by Day of Week in McKinley County, 2012-2016

Day of Week	Year					5-Year Average
	2012	2013	2014	2015	2016	
Sunday	72	120	106	116	115	106
Monday	56	62	49	58	56	56
Tuesday	67	67	68	67	82	70
Wednesday	74	95	70	75	90	81
Thursday	101	111	93	113	104	104
Friday	123	141	118	124	137	129
Saturday	135	164	171	162	161	159
Total Arrests	628	760	675	715	745	705

Table 21: Driver First DWI Arrests by Age Group in McKinley County, 2012-2016

Age Groups	Driver First DWI Arrests ¹				
	2012	2013	2014	2015	2016
15-19	19	26	19	8	13
20-24	85	91	76	90	91
25-29	70	98	88	89	110
30-34	46	53	54	45	57
35-39	24	35	38	33	35
40-44	27	27	28	13	27
45-49	18	16	16	16	18
50-54	8	7	11	14	12
55-59	5	4	5	8	10
60-64	0	3	3	7	5
65-69	1	1	1	0	0
70 +	1	1	2	0	5
Missing Data	1	1	3	4	2
Total Drivers	305	363	344	327	385

¹ Values are based upon the year of the arrest.

Table 22: Driver Repeat DWI Arrests by Age Group in McKinley County, 2012-2016

Age Groups	Driver Repeat DWI Arrests ¹				
	2012	2013	2014	2015	2016
15-19	2	2	1	3	3
20-24	26	35	27	29	28
25-29	42	76	57	72	66
30-34	66	62	63	55	61
35-39	52	65	43	57	62
40-44	52	62	52	56	47
45-49	30	40	24	38	37
50-54	29	34	26	39	30
55-59	14	12	18	21	15
60-64	3	5	11	9	7
65-69	3	1	4	5	4
70 +	2	2	3	1	0
Missing Data	2	1	2	3	0
Total Drivers	323	397	331	388	360

¹ Values are based upon the year of the arrest.

Table 23: Driver First DWI Convictions by Age Group in McKinley County, 2012-2016

Age Groups	Driver First DWI Convictions ¹				
	2012	2013	2014	2015	2016
15-19	14	16	6	6	3
20-24	55	55	46	48	54
25-29	55	71	64	45	56
30-34	31	35	35	26	34
35-39	17	21	25	21	17
40-44	15	17	28	8	10
45-49	15	11	11	6	4
50-54	9	6	4	12	5
55-59	6	3	4	4	7
60-64	0	1	3	4	1
65-69	1	0	2	0	0
70 +	0	0	1	0	0
Missing Data	0	1	1	1	0
Total Drivers	218	237	230	181	191

¹ Values are based upon the year of the conviction.

Table 24: Driver Repeat DWI Convictions by Age Group in McKinley County, 2012-2016

Age Groups	Driver Repeat DWI Convictions ¹				
	2012	2013	2014	2015	2016
15-19	0	0	0	1	0
20-24	10	16	8	15	9
25-29	28	31	31	28	22
30-34	37	38	27	28	20
35-39	33	42	22	34	25
40-44	50	29	29	35	19
45-49	25	22	19	20	16
50-54	19	13	20	20	15
55-59	8	13	10	11	5
60-64	0	3	6	3	4
65-69	2	1	2	0	1
70 +	2	2	0	1	0
Missing Data	0	1	3	1	1
Total Drivers	214	211	177	197	137

¹ Values are based upon the year of the conviction.

Table 25: Court Disposition of DWI Arrests for McKinley County and the State, 2016

Court Disposition of DWI Arrest ¹	McKinley County	Statewide	Percent of Statewide
Total DWI Arrests	745	10,344	7.2%
DWI Arrests Resulting in Convictions	310	5,541	5.6%
DWI Arrests Resulting in Dismissals ²	75	1,512	5.0%
DWI Arrests Awaiting Disposition	360	3,291	10.9%

¹ These are the number of DWI arrests in 2016 and whether the case resulted in a conviction or dismissal, or is still awaiting court disposition, as reported in the NM MVD Citation Tracking System (CTS) as of December 2017.

² For this table, a very small number of "not guilty" rulings may be included in the category Dismissals.

Table 26: Average Number of Days from Date of DWI Arrest to Date of Court Disposition in McKinley County and the State, 2016

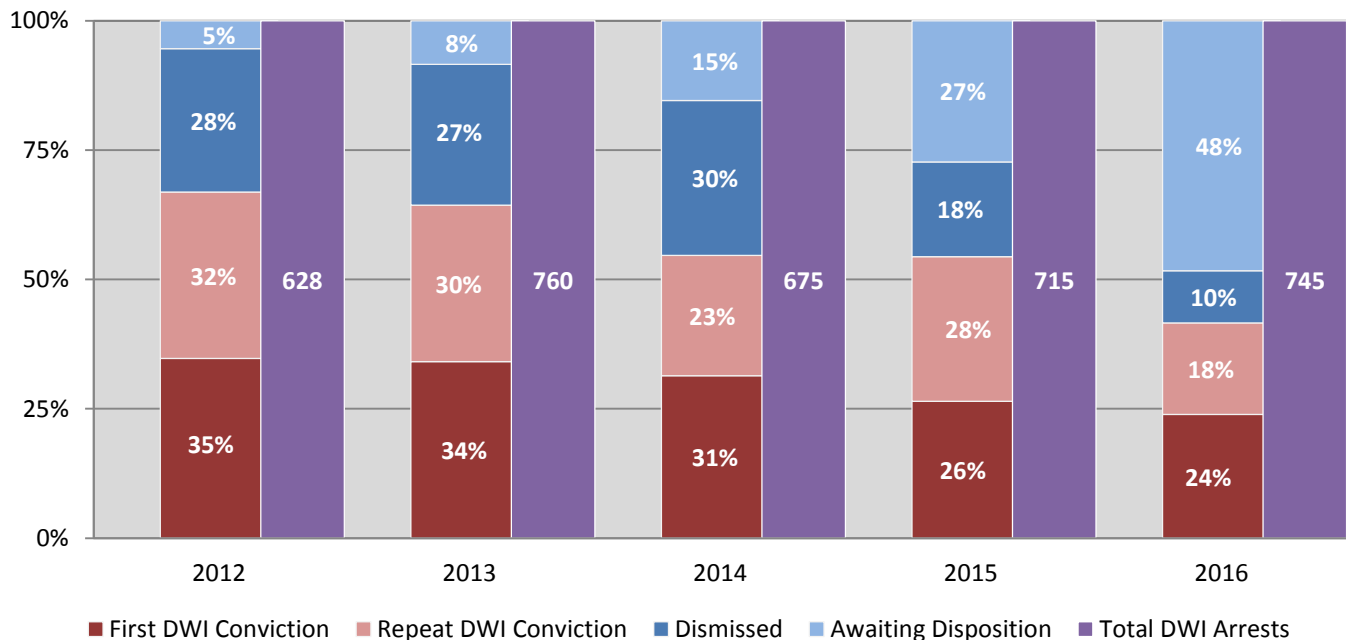
Court Disposition	Average Number of Days		Deviation from Statewide Average
	McKinley County	Statewide	
DWI Conviction	123	157	-34
DWI Dismissal	132	179	-47

Table 27: Court Disposition of DWI Arrests in McKinley County, 2012-2016

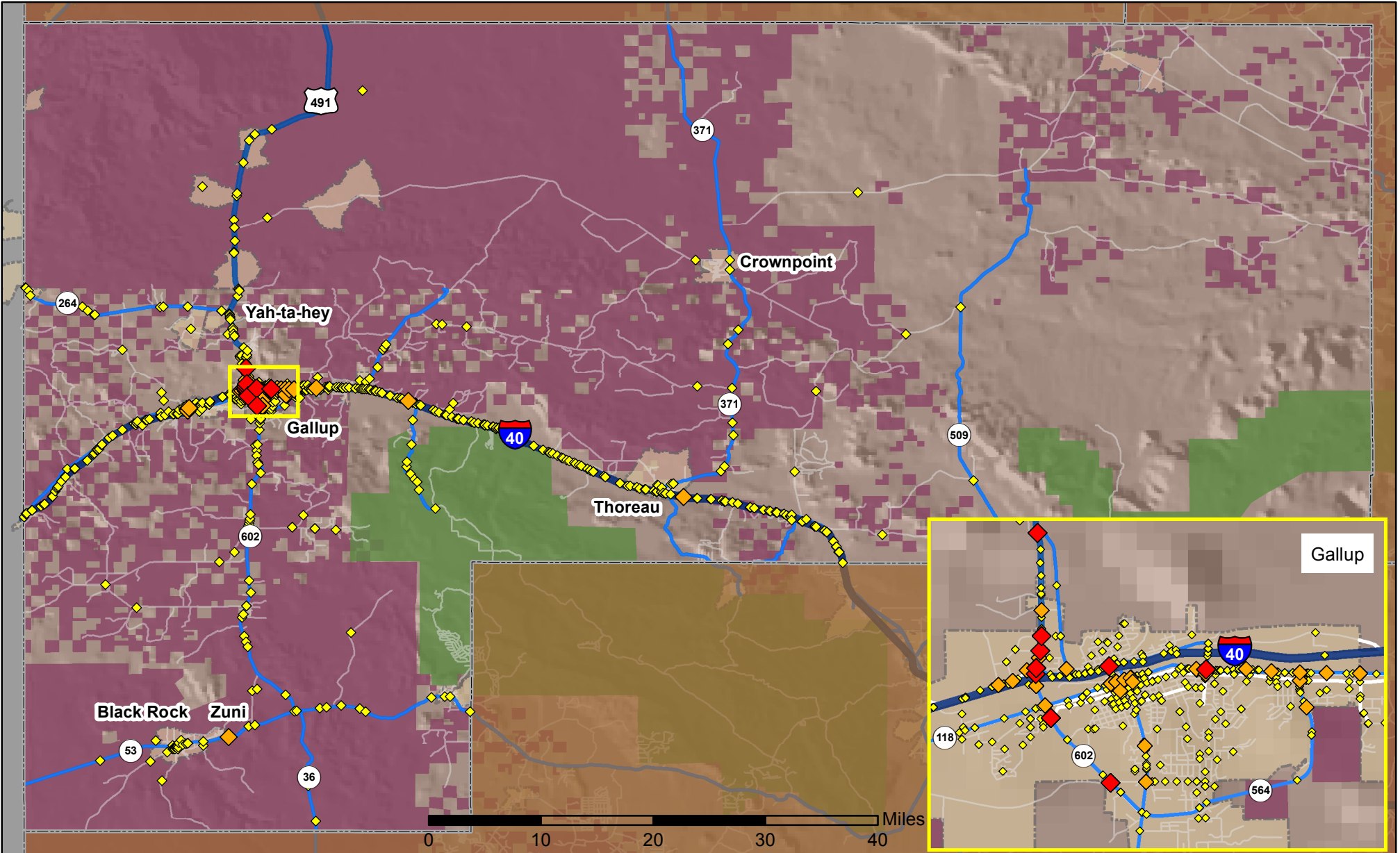
Year of DWI Arrest ¹	Court Disposition				Total DWI Arrests
	First DWI Conviction	Repeat DWI Conviction	Dismissed	Awaiting Disposition	
2012	218	202	174	34	628
2013	259	230	207	64	760
2014	212	157	202	104	675
2015	189	200	131	195	715
2016	178	132	75	360	745

¹ Values are based upon the year of the arrest.

Figure 14: Court Dispositions by Percentage of DWI Arrests in McKinley County, 2012-2016



*Table 27 contains the values used to calculate percentages shown in Figure 14.



Legend

Data Source: NMDOT Crash File 2016
<http://tru.unm.edu> CO#5801 tru@unm.edu

- Forest & Wildlife Areas
- Reservations & Pueblos
- County Boundaries
- City Boundaries

- Interstate Highways
- U.S. Highways
- State Highways
- Streets & Roadways

Crashes 2016

- 1 - 3 Crashes
- 4 - 10 Crashes
- 11 - 32 Crashes