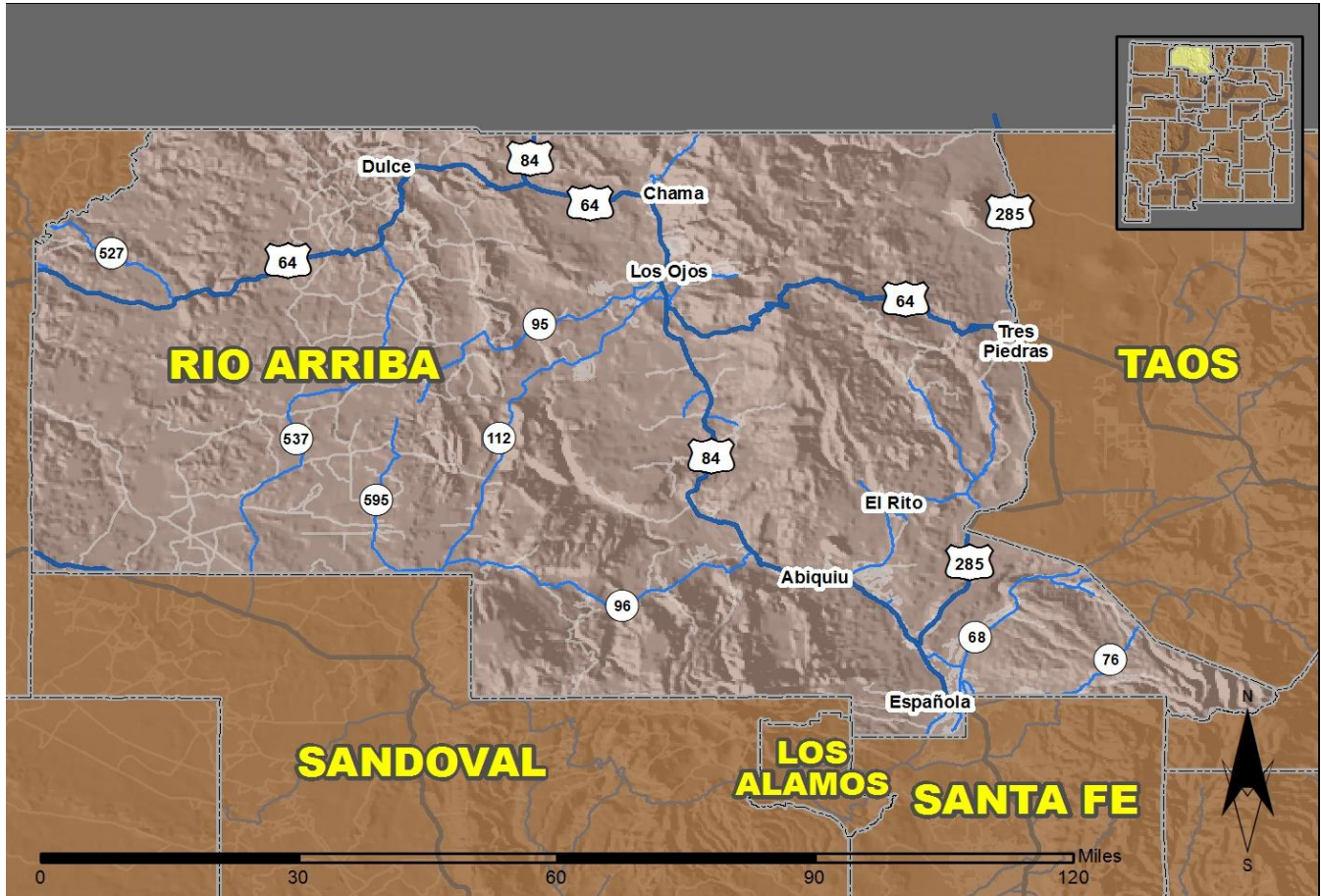


# 2016 Community Report

## Rio Arriba County



Produced for the New Mexico Department of Transportation,  
Traffic Safety Division, Traffic Records Bureau,  
Under Contract 5801 by the University of New Mexico,  
Geospatial and Population Studies, Traffic Research Unit

Distributed in compliance with New Mexico Statute 66-7-214  
as a reference source regarding New Mexico traffic crashes

For the purposes of this report, data are compiled by the University of New Mexico, Geospatial and Population Studies, Traffic Research Unit (TRU), on behalf of the New Mexico Department of Transportation (NMDOT). Data in this report may differ from that in other data sources, such as the Federal Fatality Analysis Reporting System (FARS), due to the timing of publications and rules for how data are compiled and maintained in Federal vs. State databases. If you have questions regarding this report, please contact the Traffic Safety Division at 505-827-0427.

<http://tru.unm.edu/Crash-Reports/Community-Reports/>

## Definitions

---

**Aggravated DWI** – A driver arrested for 1) driving with a BAC of 0.16 or higher, 2) driving under the influence of alcohol or drugs and causing bodily injury to a human being as a result, or 3) driving under the influence of alcohol or drugs and refusing to submit to a BAC test at the time of arrest for DWI.

**Alcohol-involved Crash** – A crash for which the Uniform Crash Report indicated that 1) a DWI citation was issued, 2) alcohol was a contributing factor, or 3) a person in control of a vehicle (including a pedestrian or pedalcyclist) was suspected of being under the influence of alcohol.

**Alcohol-involved Driver** – A person in control of a vehicle who was cited for DWI or indicated on the Uniform Crash Report as being either suspected or determined by testing to be under the influence of alcohol. There can be multiple alcohol-involved drivers in a single alcohol-involved crash.

**Crash** – A reported incident on a public roadway involving one or more motor vehicles that resulted in death, personal injury, or at least \$500 in property damage. Crashes on private property (such as a parking lot) are not included.

**DWI Arrest (Citation)** – In this report, a DWI arrest (a.k.a. a DWI citation) is a driver arrested for either DWI or aggravated DWI. New Mexico’s legal limit for presumption of driving while intoxicated (DWI) is 0.08 for non-commercial drivers older than 21 years of age, 0.04 for commercial vehicle drivers, and 0.02 for drivers younger than 21 years of age.

**DWI Conviction** – A driver convicted of driving under the intoxicating influence of alcohol, narcotics, or pathogenic drugs, including aggravated DWI.

**Fatal Crash** – A crash in which at least one person was killed. More than one person can be killed in a single fatal crash.

**Fatalities** – The number of people killed in a crash. The terms “killed” and “deaths” are synonymous with “fatalities.” A fatality is crash-related if it occurs at the time of the crash or if the person(s) involved in the crash dies within 30 days.

**Injury Crash** – A reported crash in which at least one person was injured. Injury crashes involve at least one suspected serious injury (Class A), suspected minor injury (Class B), or possible injury (Class C). Fatal crashes are not included.

**Missing Data** – An indication that the applicable field on the UCR form was left blank or contained an invalid code. Starting with crashes that occurred in 2012, improvements in the identification of missing data in the NMDOT crash database led to an increase in the reported amount of missing data.

**Pedalcyclist** – A person riding a mechanism of transport that is powered solely by pedals (a.k.a. bicyclist).

**Pedestrian** – A person on foot, walking, running, jogging, hiking, sitting or lying down who is involved in a motor vehicle traffic crash.

## Sources

---

**Crash Data** – New Mexico Department of Transportation, Traffic Safety Division, Traffic Records Bureau, Traffic Crash Database, as of the report date below. Crash data are compiled using NMDOT Uniform Crash Reports (UCR), submitted by law enforcement agencies in the state, for any incident on a public roadway involving one or more motor vehicles that resulted in death, injury, or at least \$500 in property damage. These reports are processed by the NMDOT Traffic Records Bureau and analyzed by the University of New Mexico, Geospatial and Population Studies, Traffic Research Unit (TRU).

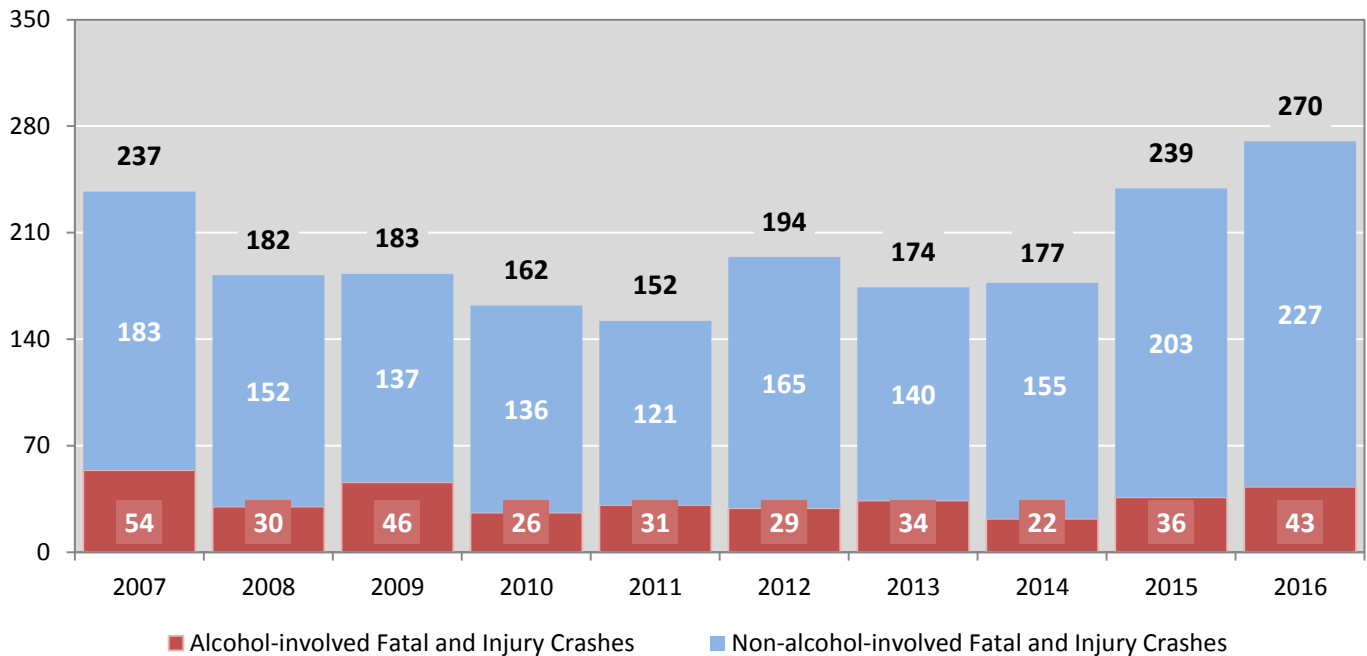
**DWI Citation Tracking System (CTS)** – New Mexico Taxation and Revenue Department (NM TRD), Motor Vehicle Division (MVD), DWI Citation Tracking System (CTS), as of December 2017. Repeat offenders are identified by the combination of account key, arrest date, and citation number. County data are based upon the county where the arrest took place. City data are based upon the city where the offender resides.

**Urban Areas** – New Mexico Department of Transportation, Asset Management and Planning, 2010 U.S. Census Urbanized Area Boundaries, NMDOT-Adjusted, and U.S. Census Urban Clusters, August 21, 2013. In crashes before 2013, “urban” was defined as a town or city with a population of at least 2,500 people.

**Table 1: Total Crashes and Alcohol-involved Crashes by  
Crash Severity in Rio Arriba County, 2007-2016**

Year	Total Crashes				Alcohol-involved Crashes			
	Fatal	Injury	Property Damage Only	Total	Fatal	Injury	Property Damage Only	Total
2007	13	224	496	<b>733</b>	11	43	22	<b>76</b>
2008	14	168	456	<b>638</b>	7	23	21	<b>51</b>
2009	12	171	416	<b>599</b>	7	39	42	<b>88</b>
2010	6	156	360	<b>522</b>	3	23	20	<b>46</b>
2011	11	141	329	<b>481</b>	6	25	19	<b>50</b>
2012	17	177	442	<b>636</b>	6	23	35	<b>64</b>
2013	11	163	415	<b>589</b>	5	29	23	<b>57</b>
2014	8	169	425	<b>602</b>	3	19	20	<b>42</b>
2015	11	228	447	<b>686</b>	5	31	22	<b>58</b>
2016	9	261	589	<b>859</b>	8	35	20	<b>63</b>

**Figure 1: Alcohol-involved Fatal and Injury Crashes Compared with  
Non-alcohol-involved Fatal and Injury Crashes in Rio Arriba County, 2007-2016**



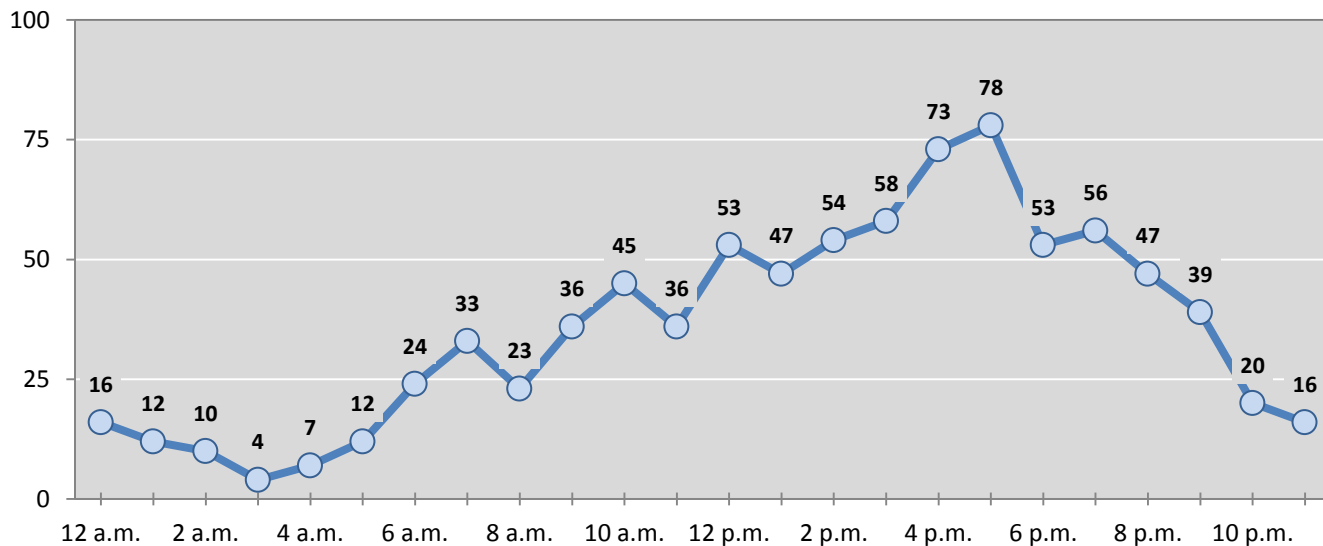
**Table 2: Crashes by Month in Rio Arriba County, 2012-2016**

Month	Crashes					5-Year Average
	2012	2013	2014	2015	2016	
January	57	54	41	64	80	59
February	50	27	52	48	71	50
March	59	34	48	52	49	48
April	53	39	51	32	68	49
May	50	30	40	44	61	45
June	55	62	48	45	64	55
July	52	57	43	86	91	66
August	49	46	51	68	67	56
September	52	56	46	65	83	60
October	70	75	68	59	74	69
November	34	54	49	54	75	53
December	55	55	65	69	76	64
<b>Total Crashes</b>	<b>636</b>	<b>589</b>	<b>602</b>	<b>686</b>	<b>859</b>	<b>674</b>

**Table 3: Alcohol-involved Crashes by Month in Rio Arriba County, 2012-2016**

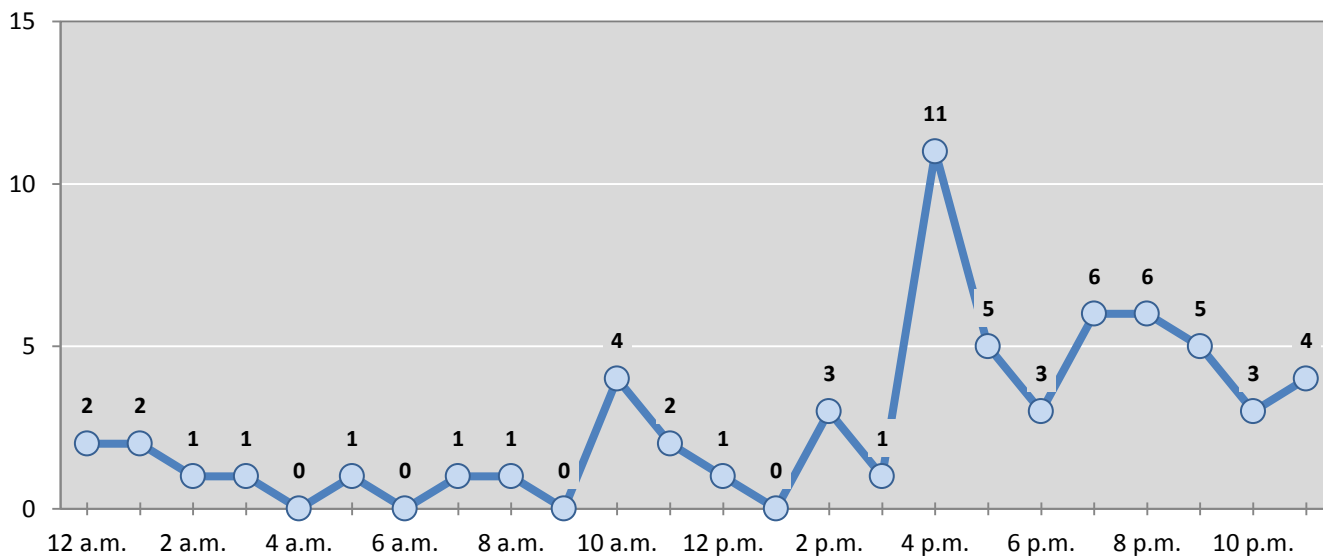
Month	Alcohol-involved Crashes					5-Year Average
	2012	2013	2014	2015	2016	
January	4	5	4	4	12	6
February	2	3	0	4	4	3
March	10	5	2	4	4	5
April	6	7	4	4	1	4
May	5	0	7	7	4	5
June	6	5	4	6	3	5
July	7	5	5	11	6	7
August	3	5	1	4	5	4
September	7	5	3	5	4	5
October	3	4	3	3	7	4
November	4	6	2	2	4	4
December	7	7	7	4	9	7
<b>Total Crashes</b>	<b>64</b>	<b>57</b>	<b>42</b>	<b>58</b>	<b>63</b>	<b>57</b>

**Figure 2: Crashes by Hour in Rio Arriba County, 2016**



\* In 2016, Rio Arriba County had 7 crashes for which hour data were missing.

**Figure 3: Alcohol-involved Crashes by Hour in Rio Arriba County, 2016**



\* In 2016, Rio Arriba County had 0 alcohol-involved crashes for which hour data were missing.

**Table 4: Alcohol-involved Crashes by Day of Week in Rio Arriba County, 2012-2016**

Day of Week	Alcohol-involved Crashes					5-Year Average
	2012	2013	2014	2015	2016	
Sunday	8	10	7	8	14	9
Monday	6	4	2	9	4	5
Tuesday	15	9	3	6	5	8
Wednesday	7	7	10	4	7	7
Thursday	9	8	5	6	9	7
Friday	7	14	5	12	9	9
Saturday	12	5	10	13	15	11
<b>Total Crashes</b>	<b>64</b>	<b>57</b>	<b>42</b>	<b>58</b>	<b>63</b>	<b>57</b>

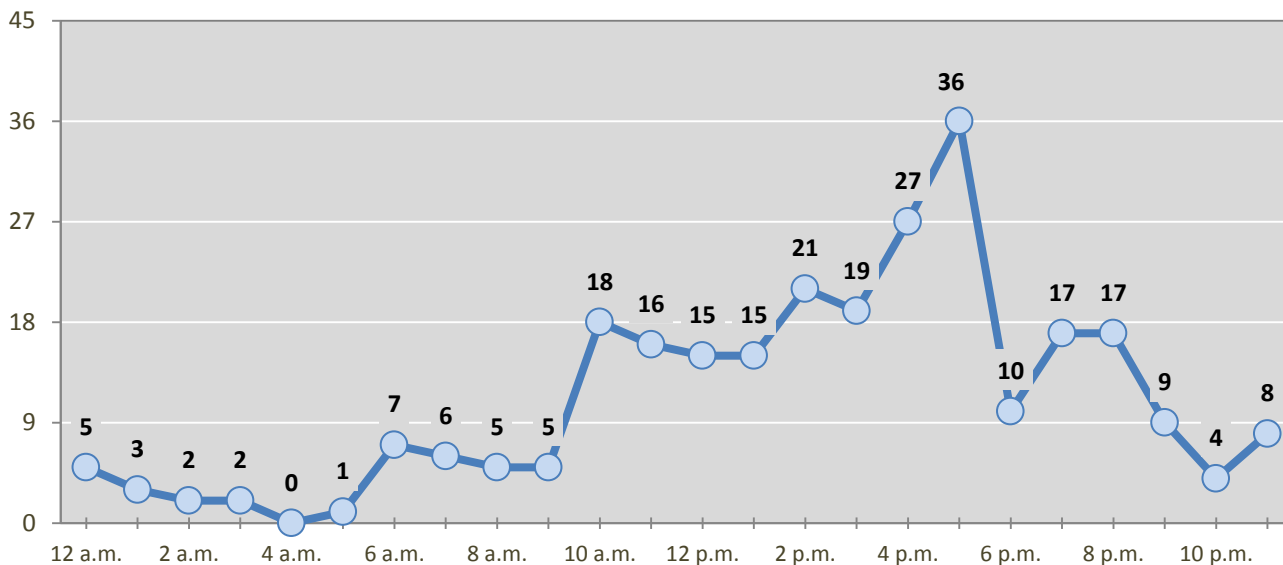
**Table 5: Fatal and Injury Crashes by Day of Week in Rio Arriba County, 2012-2016**

Day of Week	Fatal and Injury Crashes					5-Year Average
	2012	2013	2014	2015	2016	
Sunday	20	14	25	33	31	25
Monday	25	27	23	35	29	28
Tuesday	26	35	25	40	26	30
Wednesday	27	25	33	36	44	33
Thursday	24	25	24	28	46	29
Friday	37	28	25	40	48	36
Saturday	35	20	22	27	46	30
<b>Total Crashes</b>	<b>194</b>	<b>174</b>	<b>177</b>	<b>239</b>	<b>270</b>	<b>211</b>

**Table 6: Pedestrian and Pedalcyclist Crashes by Day of Week in Rio Arriba County, 2012-2016**

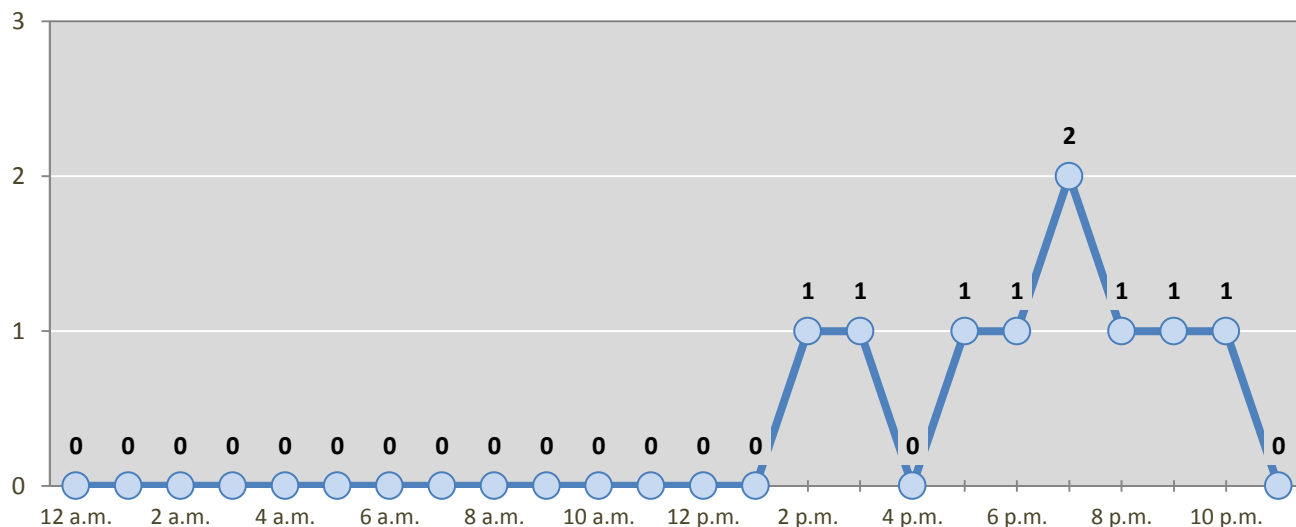
Day of Week	Pedestrian and Pedalcyclist Crashes					5-Year Average
	2012	2013	2014	2015	2016	
Sunday	1	1	1	0	1	1
Monday	0	0	1	1	2	1
Tuesday	1	1	2	0	1	1
Wednesday	0	0	0	1	1	0
Thursday	0	1	0	0	2	1
Friday	0	2	0	2	1	1
Saturday	2	0	0	2	1	1
<b>Total Crashes</b>	<b>4</b>	<b>5</b>	<b>4</b>	<b>6</b>	<b>9</b>	<b>6</b>

**Figure 4: Fatal and Injury Crashes by Hour in Rio Arriba County, 2016**



\* In 2016, Rio Arriba County had 2 crashes for which hour data were missing.

**Figure 5: Pedestrian and Pedalcyclist Crashes by Hour in Rio Arriba County, 2016**



\* In 2016, Rio Arriba County had 0 crashes for which hour data were missing.

**Table 7: Severity of Injuries to People in Crashes by Rural and Urban Location in Rio Arriba County, 2016**

Urban and Rural Locations by Alcohol-involvement	People in Crashes by Severity of Injuries					Total People
	Fatalities (Class K)	Suspected Serious Injuries (Class A)	Suspected Minor Injuries (Class B)	Possible Injuries (Class C)	No Apparent Injuries (Class O)	
<b>People in Alcohol-involved Crashes</b>	<b>10</b>	<b>9</b>	<b>28</b>	<b>27</b>	<b>63</b>	<b>137</b>
Urban	5	7	15	19	47	93
Rural Non-Interstate	5	2	13	8	16	44
Rural Interstate	0	0	0	0	0	0
<b>People in Crashes</b>	<b>11</b>	<b>26</b>	<b>91</b>	<b>305</b>	<b>1,567</b>	<b>2,000</b>
Urban	5	18	40	247	1,065	1,375
Rural Non-Interstate	6	8	51	58	502	625
Rural Interstate	0	0	0	0	0	0
<b>Percent in Alcohol-involved Crashes</b>	<b>91%</b>	<b>35%</b>	<b>31%</b>	<b>9%</b>	<b>4%</b>	<b>7%</b>

**Table 8: Total Crashes by Roadway System and Crash Severity in Rio Arriba County, 2012-2016**

Crash Severity by System	Crashes by Year					5-Year Average
	2012	2013	2014	2015	2016	
<b>Total Rural Interstate</b>	<b>0</b>	<b>0</b>	<b>1</b>	<b>0</b>	<b>0</b>	<b>0</b>
Fatal Crash	0	0	0	0	0	0
Injury Crash	0	0	0	0	0	0
Property Damage Only Crash	0	0	1	0	0	0
<b>Total Rural Non-Interstate</b>	<b>399</b>	<b>317</b>	<b>301</b>	<b>283</b>	<b>343</b>	<b>329</b>
Fatal Crash	17	8	6	5	5	8
Injury Crash	109	74	71	76	74	81
Property Damage Only Crash	273	235	224	202	264	240
<b>Total Urban</b>	<b>237</b>	<b>272</b>	<b>300</b>	<b>403</b>	<b>516</b>	<b>346</b>
Fatal Crash	0	3	2	6	4	3
Injury Crash	68	89	98	152	187	119
Property Damage Only Crash	169	180	200	245	325	224



**Table 9: Total Crashes by Crash Classification in Rio Arriba County, 2012-2016**

Crash Classification	Total Crashes by Year					5-Year Average
	2012	2013	2014	2015	2016	
Animal	89	122	121	102	133	113
Fixed Object	80	75	79	83	87	81
Other (Non-Collision)	13	16	13	11	23	15
Other (Object)	40	21	20	21	25	25
Other Vehicle	313	256	273	365	486	339
Overturn/Rollover	61	60	54	27	49	50
Parked Vehicle	24	17	17	11	8	15
Pedalcyclist	1	0	0	1	1	1
Pedestrian	3	5	3	6	8	5
Railroad Train	0	1	0	0	1	0
Rollover	0	0	1	43	26	14
Vehicle on Other Road	4	8	7	10	6	7
Missing Data	8	8	14	6	6	8
<b>Total Crashes</b>	<b>636</b>	<b>589</b>	<b>602</b>	<b>686</b>	<b>859</b>	<b>674</b>

**Table 10: Vehicles in Crashes by Vehicle Type in Rio Arriba County, 2012-2016**

Vehicle Type <sup>1</sup>	Vehicles in Crashes by Vehicle Type					5-Year Average
	2012	2013	2014	2015	2016	
Bus	3	2	3	2	10	4
Motorcycle	22	13	22	22	24	21
Passenger	489	399	345	479	706	484
Pedalcyclist	2	0	0	1	1	1
Pedestrian	2	5	4	6	9	5
Pickup	216	184	225	256	329	242
Semi	25	23	25	22	45	28
Van/SUV/4WD	136	152	154	184	224	170
Other Vehicle	21	10	7	21	6	13
Missing Data	89	112	145	118	55	104
<b>Total Vehicles</b>	<b>1,005</b>	<b>900</b>	<b>930</b>	<b>1,111</b>	<b>1,409</b>	<b>1,071</b>

<sup>1</sup> Pedestrians and pedalcyclists are counted as non-motorized vehicles, when involved in a crash with a motor vehicle. See Page 17 for data on drivers of non-motorized vehicles in crashes (i.e. pedestrians and pedalcyclists).

**Table 11: Motor Vehicle Drivers in Crashes by Vehicle Type and Age Group in Rio Arriba County, 2016**

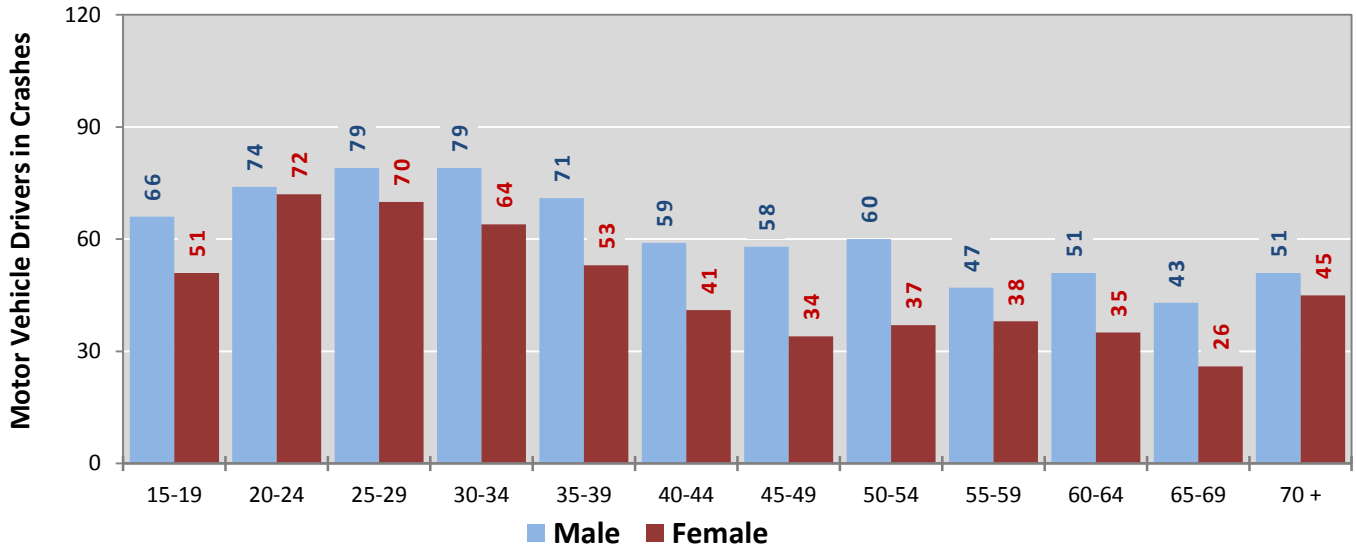
Age Groups	Motor Vehicle <sup>1</sup> Drivers by Vehicle Type and Age Group								Total Drivers
	Bus	Motor-cycle	Passenger	Pickup	Semi	Van 4WD SUV	Other Vehicle	Missing Data	
15-19	0	2	81	21	0	11	1	2	<b>118</b>
20-24	0	2	92	29	5	16	1	2	<b>147</b>
25-29	0	1	81	36	4	26	0	1	<b>149</b>
30-34	1	1	74	33	5	28	0	1	<b>143</b>
35-39	1	3	54	32	4	29	0	1	<b>124</b>
40-44	0	3	51	15	5	22	0	4	<b>100</b>
45-49	0	2	37	27	5	18	1	2	<b>92</b>
50-54	0	3	47	24	4	16	0	3	<b>97</b>
55-59	3	2	42	21	3	11	1	4	<b>87</b>
60-64	3	0	30	33	6	14	0	0	<b>86</b>
65-69	0	2	31	22	1	11	1	1	<b>69</b>
70 +	2	0	53	23	3	14	1	1	<b>97</b>
Missing Data	0	3	33	13	0	8	0	33	<b>90</b>
<b>Total Drivers</b>	<b>10</b>	<b>24</b>	<b>706</b>	<b>329</b>	<b>45</b>	<b>224</b>	<b>6</b>	<b>55</b>	<b>1,399</b>

**Table 12: Alcohol-involved Motor Vehicle Drivers in Crashes by Vehicle Type and Age Group in Rio Arriba County, 2016**

Age Groups	Alcohol-involved Motor Vehicle <sup>1</sup> Drivers by Vehicle Type and Age Group								Total Drivers
	Bus	Motor-cycle	Passenger	Pickup	Semi	Van 4WD SUV	Other Vehicle	Missing Data	
15-19	0	0	3	0	0	0	0	0	<b>3</b>
20-24	0	0	3	0	0	0	0	0	<b>3</b>
25-29	0	0	6	1	0	3	0	0	<b>10</b>
30-34	0	0	6	2	0	0	0	0	<b>8</b>
35-39	0	1	4	2	0	2	0	0	<b>9</b>
40-44	0	0	4	1	0	0	0	0	<b>5</b>
45-49	0	1	3	1	1	1	0	0	<b>7</b>
50-54	0	2	2	1	0	0	0	1	<b>6</b>
55-59	0	0	3	0	0	1	0	0	<b>4</b>
60-64	0	0	1	0	0	0	0	0	<b>1</b>
65-69	0	0	0	0	0	0	0	0	<b>0</b>
70 +	0	0	1	0	0	0	0	0	<b>1</b>
Missing Data	0	0	2	0	0	0	0	0	<b>2</b>
<b>Total Drivers</b>	<b>0</b>	<b>4</b>	<b>38</b>	<b>8</b>	<b>1</b>	<b>7</b>	<b>0</b>	<b>1</b>	<b>59</b>

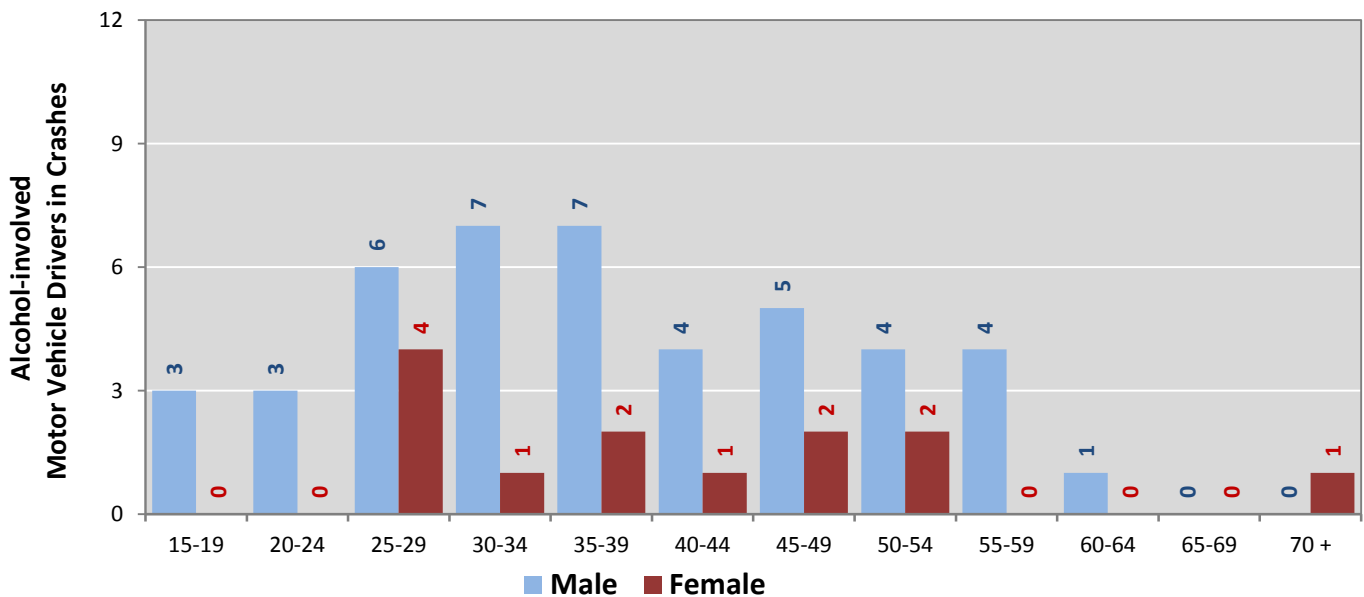
<sup>1</sup> See Page 17 for data on drivers of non-motorized vehicles in crashes (i.e. pedestrians and pedalcyclists).

**Figure 6: Motor Vehicle Drivers in Crashes by Age Group and Sex in Rio Arriba County, 2016**



\* In 2016, Rio Arriba County had 95 drivers in crashes for which age or sex data were missing.

**Figure 7: Alcohol-involved Motor Vehicle Drivers in Crashes by Age Group and Sex in Rio Arriba County, 2016**



\* In 2016, Rio Arriba County had 2 drivers in crashes for which age or sex data were missing.

**Table 13: Alcohol-involved Motor Vehicle Drivers Under 21 (Ages 15-20) in Crashes in Rio Arriba County, 2012-2016**

Age <sup>1</sup>	Year					5-Year Total
	2012	2013	2014	2015	2016	
15	0	0	0	0	0	0
16	1	0	1	0	0	2
17	0	0	1	0	0	1
18	2	0	1	1	1	5
19	1	1	0	1	2	5
20	1	2	1	0	1	5
<b>Total Drivers</b>	<b>5</b>	<b>3</b>	<b>4</b>	<b>2</b>	<b>4</b>	<b>18</b>

**Table 14: Motor Vehicle Drivers Under 21 (Ages 15-20) in Crashes by Age, Sex and Alcohol-involvement in Rio Arriba County, 2016**

Age <sup>1</sup>	Total Drivers				Alcohol-involved Drivers			
	Sex		Total Drivers	Percent of Total	Sex		Total Drivers	Percent of Total
	Male	Female			Male	Female		
15	4	1	5	3%	0	0	0	0%
16	11	10	21	14%	0	0	0	0%
17	19	14	33	22%	0	0	0	0%
18	20	13	33	22%	1	0	1	25%
19	12	13	25	17%	2	0	2	50%
20	16	16	32	21%	1	0	1	25%
<b>Total Drivers</b>	<b>82</b>	<b>67</b>	<b>149</b>	<b>100%</b>	<b>4</b>	<b>0</b>	<b>4</b>	<b>100%</b>

<sup>1</sup> For analysis of drivers under age 21, when the driver age or sex are not identified on the crash report (typically hit-and-run drivers), the driver data are considered unreliable and are excluded from the analysis.

**Table 15: Frequency of Contributing Factors in Crashes  
by Crash Severity in Rio Arriba County, 2016**

Contributing Factors	Frequency of Contributing Factor <sup>1</sup> by Crash Severity			
	Frequency in Fatal Crashes	Frequency in Injury Crashes	Frequency in Property Damage Only Crashes	Frequency in All Crashes
<b>Human</b>	<b>24</b>	<b>452</b>	<b>666</b>	<b>1,142</b>
Driver Inattention	1	152	252	<b>405</b>
Following Too Closely	0	64	78	<b>142</b>
Failed to Yield Right of Way	0	36	59	<b>95</b>
Excessive Speed	3	35	45	<b>83</b>
Other Improper Driving	4	24	40	<b>68</b>
Alcohol Involved	8	36	20	<b>64</b>
Avoid No Contact - Vehicle	0	13	31	<b>44</b>
Speed Too Fast for Conditions	0	12	27	<b>39</b>
Drove Left Of Center	1	18	16	<b>35</b>
Made Improper Turn	0	11	20	<b>31</b>
Avoid No Contact - Other	4	7	11	<b>22</b>
Improper Backing	0	4	15	<b>19</b>
Improper Lane Change	0	4	11	<b>15</b>
Improper Overtaking	0	6	9	<b>15</b>
Drug Involved	1	8	6	<b>15</b>
Disregarded Traffic Signal	0	6	7	<b>13</b>
Cell Phone	0	6	6	<b>12</b>
Passed Stop Sign	0	4	5	<b>9</b>
Vehicle Skidded Before Brake	1	0	4	<b>5</b>
Pedestrian Error	1	3	0	<b>4</b>
Texting	0	3	0	<b>3</b>
Failed to Yield to Police Vehicle	0	0	2	<b>2</b>
Failed to Yield to Emergency Vehicle	0	0	1	<b>1</b>
High Speed Pursuit	0	0	1	<b>1</b>
Driverless Moving Vehicle	0	0	0	<b>0</b>
<b>Vehicle</b>	<b>0</b>	<b>3</b>	<b>18</b>	<b>21</b>
Other Mechanical Defect	0	1	9	<b>10</b>
Inadequate Brakes	0	1	6	<b>7</b>
Defective Tires	0	0	3	<b>3</b>
Defective Steering	0	1	0	<b>1</b>
<b>Environment</b>	<b>0</b>	<b>6</b>	<b>6</b>	<b>12</b>
Traffic Control Not Functioning	0	4	3	<b>7</b>
Road Defect	0	2	3	<b>5</b>
Low Visibility Due to Smoke	0	0	0	<b>0</b>
<b>Other</b>	<b>4</b>	<b>181</b>	<b>441</b>	<b>626</b>
None	1	150	303	<b>454</b>
Other - No Driver Error	3	31	138	<b>172</b>

<sup>1</sup> Multiple contributing factors may be reported for any vehicle in a crash.

**Table 16: People in Crashes by Crash Classification and Severity of Injuries in Rio Arriba County, 2016**

Crash Classification	People in Crashes by Severity of Injuries					Total People
	Fatalities (Class K)	Suspected Serious Injuries (Class A)	Suspected Minor Injuries (Class B)	Possible Injuries (Class C)	No Apparent Injuries (Class O)	
Animal	0	1	9	8	188	206
Fixed Object	1	7	7	17	83	115
Other (Non-Collision)	0	1	5	2	27	35
Other (Object)	0	0	0	3	33	36
Other Vehicle	5	13	43	249	1,109	1,419
Overturn/Rollover	0	1	17	8	50	76
Parked Vehicle	0	0	0	0	14	14
Pedalcyclist	0	0	1	0	1	2
Pedestrian	3	1	5	0	15	24
Railroad Train	0	0	0	2	0	2
Rollover	2	2	4	10	18	36
Vehicle on Other Road	0	0	0	2	19	21
Missing Data	0	0	0	4	10	14
<b>Total People</b>	<b>11</b>	<b>26</b>	<b>91</b>	<b>305</b>	<b>1,567</b>	<b>2,000</b>

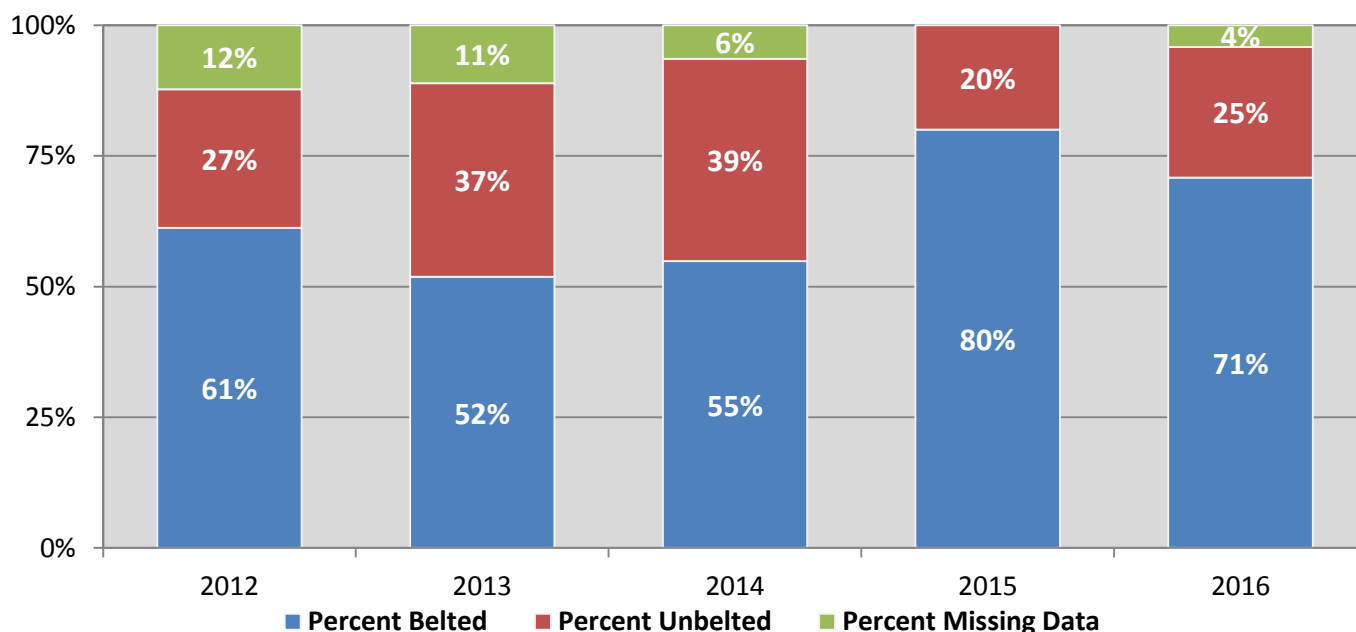
**Table 17: Killed or Injured Unbelted People in Crashes by Sex and Age Group in Rio Arriba County, 2016**

Age Groups	Unbelted People Killed or Injured <sup>1,2</sup>				Total People
	Male	Percent of Male	Female	Percent of Female	
0-4	0	0%	1	8%	1
5-9	1	11%	0	0%	1
10-14	1	11%	1	8%	2
15-19	1	11%	0	0%	1
20-24	1	11%	3	23%	4
25-29	0	0%	2	15%	2
30-34	0	0%	0	0%	0
35-39	1	11%	2	15%	3
40-44	0	0%	1	8%	1
45-49	2	22%	0	0%	2
50-54	0	0%	0	0%	0
55-59	1	11%	0	0%	1
60-64	0	0%	2	15%	2
65-69	0	0%	1	8%	1
70 +	1	11%	0	0%	1
Missing Data	0	0%	0	0%	0
<b>Total People</b>	<b>9</b>	<b>100%</b>	<b>13</b>	<b>100%</b>	<b>22</b>

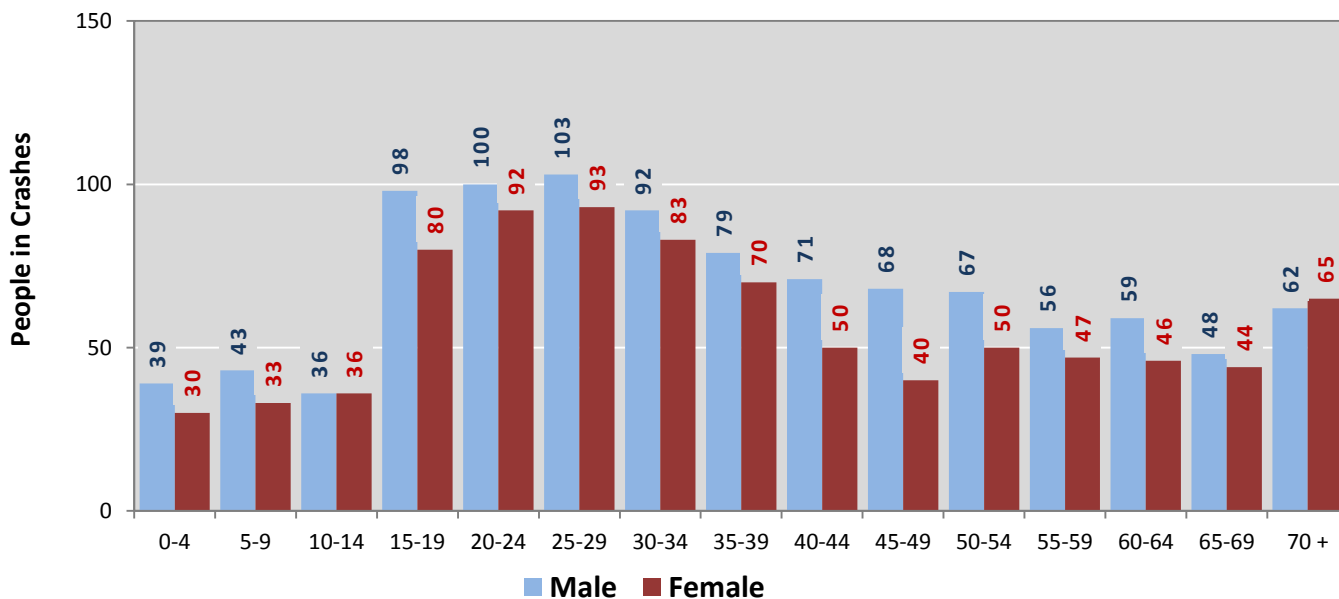
<sup>1</sup> People injured are in one of three categories: suspected serious injury, suspected minor injury, or possible injury.

<sup>2</sup> Excludes people in or on buses, heavy trucks, motorcycles, or ATVs.

**Figure 8: Seatbelt Use by People in Crashes with Fatal or Suspected Serious Injuries in Rio Arriba County, 2012-2016**

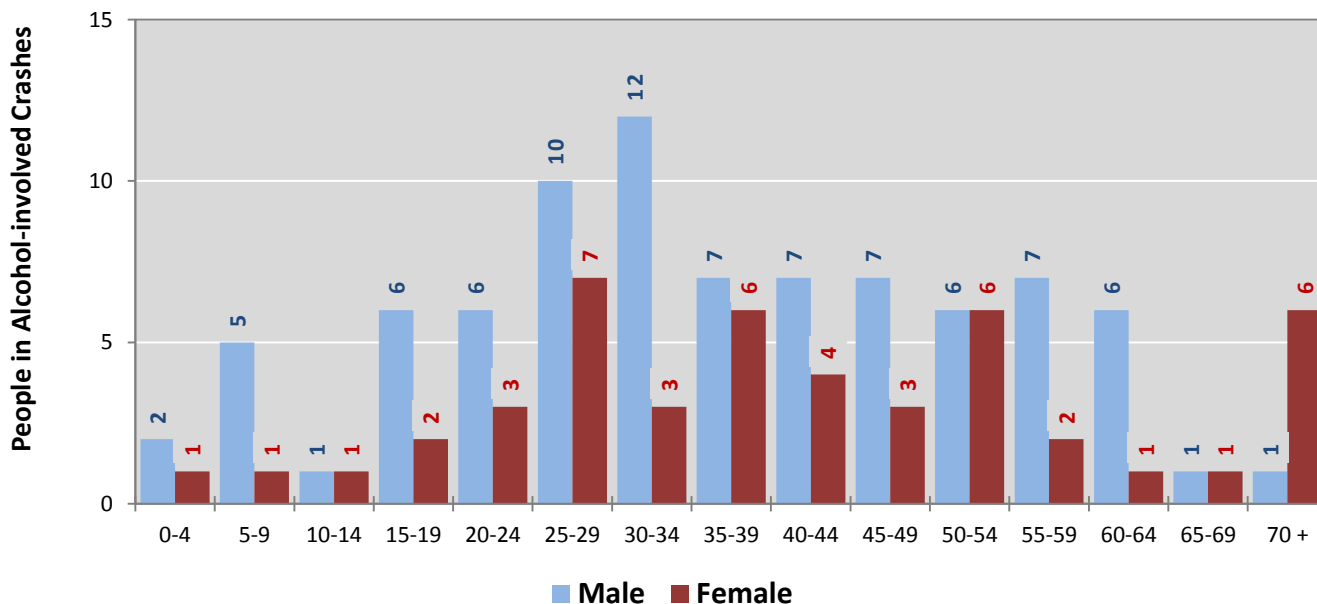


**Figure 9: People in Crashes by Age Group and Sex in Rio Arriba County, 2016**



\* In 2016, Rio Arriba County had 120 people in crashes for which age or sex data were missing.

**Figure 10: People in Alcohol-involved Crashes by Age Group and Sex in Rio Arriba County, 2016**



\* In 2016, Rio Arriba County had 6 people in alcohol-involved crashes for which age or sex data were missing.



**Table 18: Pedestrians and Pedalcyclists in Crashes by Age Group in Rio Arriba County, 2012-2016**

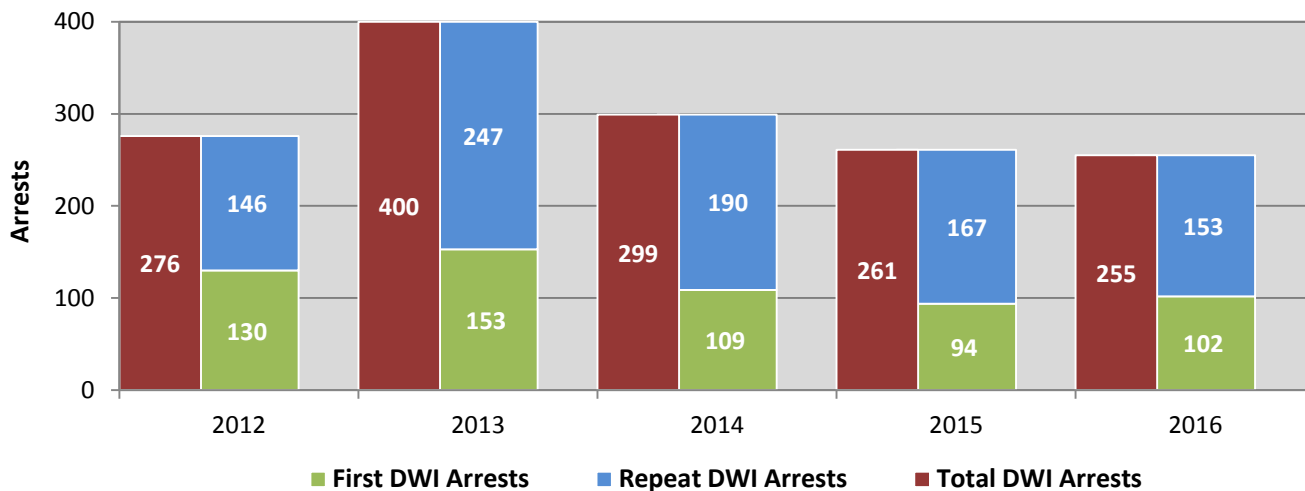
Age Groups	Pedestrians and Pedalcyclists <sup>1</sup> in Crashes					5-Year Total People
	2012	2013	2014	2015	2016	
0-4	0	0	0	0	0	0
5-9	1	0	0	1	0	2
10-14	0	0	0	0	1	1
15-19	0	1	0	1	0	2
20-24	0	1	0	0	1	2
25-29	0	1	0	0	0	1
30-34	0	0	0	4	3	7
35-39	0	0	0	0	1	1
40-44	0	0	0	0	1	1
45-49	0	1	0	1	1	3
50-54	0	0	1	0	0	1
55-59	2	0	1	0	1	4
60-64	0	0	0	0	1	1
65-69	0	1	1	0	0	2
70 +	0	0	0	0	0	0
Missing Data	1	0	1	0	0	2
<b>Total People</b>	<b>4</b>	<b>5</b>	<b>4</b>	<b>7</b>	<b>10</b>	<b>30</b>

**Table 19: Pedestrians and Pedalcyclists in Crashes by Alcohol Involvement and Severity of Injuries in Rio Arriba County, 2016**

Alcohol Involvement	Pedestrians and Pedalcyclists <sup>1</sup> in Crashes					Total People
	Fatalities (Class K)	Suspected Serious Injuries (Class A)	Suspected Minor Injuries (Class B)	Possible Injuries (Class C)	No Apparent Injury (Class O)	
<b>Total Pedalcyclists</b>	<b>0</b>	<b>0</b>	<b>1</b>	<b>0</b>	<b>0</b>	<b>1</b>
Involved	0	0	1	0	0	1
Not Involved	0	0	0	0	0	0
<b>Total Pedestrians</b>	<b>3</b>	<b>1</b>	<b>4</b>	<b>0</b>	<b>1</b>	<b>9</b>
Involved	3	1	1	0	0	5
Not Involved	0	0	3	0	1	4
<b>Total People</b>	<b>3</b>	<b>1</b>	<b>5</b>	<b>0</b>	<b>1</b>	<b>10</b>

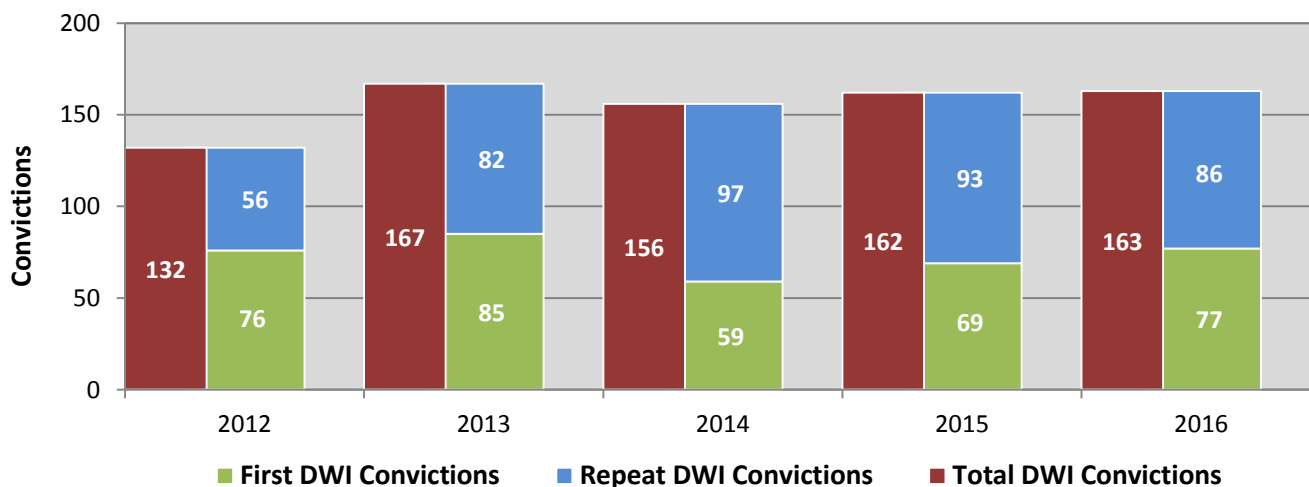
<sup>1</sup> Pedestrians and pedalcyclists are counted as non-motorized vehicles, when involved in a crash with a motor vehicle.

**Figure 11: DWI Arrests in Rio Arriba County,  
Showing First and Repeat DWI Arrests, 2012-2016**



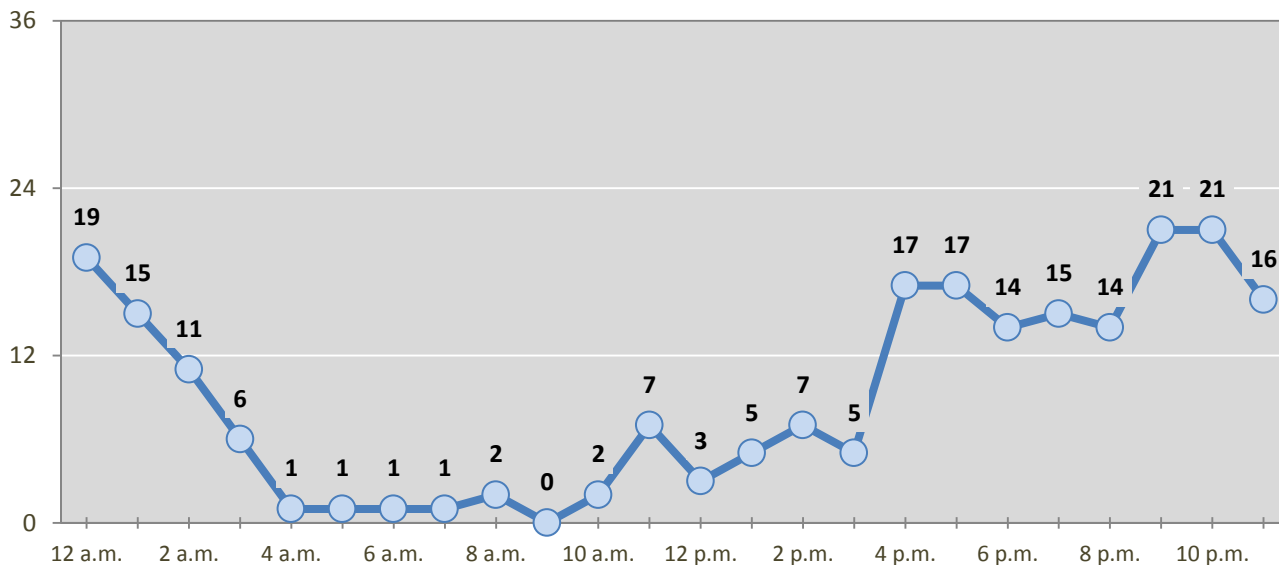
\*Values are based upon the year of the arrest.

**Figure 12: DWI Convictions in Rio Arriba County,  
Showing First and Repeat DWI Convictions, 2012-2016**



\*Values are based upon the year of the conviction.

**Figure 13: DWI Arrests by Hour in Rio Arriba County, 2016**



\* In 2016, Rio Arriba County had 34 arrests for which hour data were missing.

**Table 20: DWI Arrests by Day of Week in Rio Arriba County, 2012-2016**

Day of Week	Year					5-Year Average
	2012	2013	2014	2015	2016	
Sunday	43	79	60	46	43	54
Monday	31	44	39	25	24	33
Tuesday	28	48	27	30	33	33
Wednesday	29	38	27	24	27	29
Thursday	31	56	34	28	32	36
Friday	43	64	60	49	46	52
Saturday	71	71	52	59	50	61
<b>Total Arrests</b>	<b>276</b>	<b>400</b>	<b>299</b>	<b>261</b>	<b>255</b>	<b>298</b>

**Table 21: Driver First DWI Arrests by Age Group in Rio Arriba County, 2012-2016**

Age Groups	Driver First DWI Arrests <sup>1</sup>				
	2012	2013	2014	2015	2016
15-19	14	7	5	4	7
20-24	23	38	21	15	15
25-29	29	24	20	19	17
30-34	17	20	26	12	18
35-39	10	13	9	8	10
40-44	7	18	9	9	10
45-49	8	13	6	6	5
50-54	7	7	4	11	8
55-59	5	5	2	5	3
60-64	5	3	4	3	2
65-69	2	3	2	0	4
70 +	3	2	1	0	2
Missing Data	0	0	0	2	1
<b>Total Drivers</b>	<b>130</b>	<b>153</b>	<b>109</b>	<b>94</b>	<b>102</b>

<sup>1</sup> Values are based upon the year of the arrest.

**Table 22: Driver Repeat DWI Arrests by Age Group in Rio Arriba County, 2012-2016**

Age Groups	Driver Repeat DWI Arrests <sup>1</sup>				
	2012	2013	2014	2015	2016
15-19	4	0	2	0	1
20-24	15	11	8	7	7
25-29	12	30	24	24	14
30-34	18	44	28	25	30
35-39	22	35	15	25	19
40-44	16	37	31	26	21
45-49	17	36	24	20	20
50-54	21	25	32	18	20
55-59	10	18	12	12	14
60-64	7	9	9	8	7
65-69	2	1	4	1	0
70 +	0	1	1	1	0
Missing Data	2	0	0	0	0
<b>Total Drivers</b>	<b>146</b>	<b>247</b>	<b>190</b>	<b>167</b>	<b>153</b>

<sup>1</sup> Values are based upon the year of the arrest.

**Table 23: Driver First DWI Convictions by Age Group in Rio Arriba County, 2012-2016**

Age Groups	Driver First DWI Convictions <sup>1</sup>				
	2012	2013	2014	2015	2016
15-19	7	5	0	2	2
20-24	13	14	18	9	13
25-29	12	19	15	16	20
30-34	10	14	2	16	16
35-39	5	8	6	4	7
40-44	11	9	4	8	5
45-49	7	5	5	4	5
50-54	5	4	4	3	5
55-59	2	4	1	3	1
60-64	2	2	3	3	0
65-69	1	1	1	0	2
70 +	1	0	0	1	0
Missing Data	0	0	0	0	1
<b>Total Drivers</b>	<b>76</b>	<b>85</b>	<b>59</b>	<b>69</b>	<b>77</b>

<sup>1</sup> Values are based upon the year of the conviction.

**Table 24: Driver Repeat DWI Convictions by Age Group in Rio Arriba County, 2012-2016**

Age Groups	Driver Repeat DWI Convictions <sup>1</sup>				
	2012	2013	2014	2015	2016
15-19	0	0	0	1	0
20-24	6	5	1	2	2
25-29	6	8	12	16	8
30-34	7	13	17	14	19
35-39	6	12	9	10	15
40-44	11	11	13	12	13
45-49	11	12	13	13	13
50-54	7	13	14	16	11
55-59	1	2	9	8	4
60-64	0	3	7	1	1
65-69	0	1	2	0	0
70 +	1	1	0	0	0
Missing Data	0	1	0	0	0
<b>Total Drivers</b>	<b>56</b>	<b>82</b>	<b>97</b>	<b>93</b>	<b>86</b>

<sup>1</sup> Values are based upon the year of the conviction.

**Table 25: Court Disposition of DWI Arrests for Rio Arriba County and the State, 2016**

Court Disposition of DWI Arrest <sup>1</sup>	Rio Arriba County	Statewide	Percent of Statewide
Total DWI Arrests	255	10,344	2.5%
DWI Arrests Resulting in Convictions	121	5,541	2.2%
DWI Arrests Resulting in Dismissals <sup>2</sup>	38	1,512	2.5%
DWI Arrests Awaiting Disposition	96	3,291	2.9%

<sup>1</sup> These are the number of DWI arrests in 2016 and whether the case resulted in a conviction or dismissal, or is still awaiting court disposition, as reported in the NM MVD Citation Tracking System (CTS) as of December 2017.

<sup>2</sup> For this table, a very small number of "not guilty" rulings may be included in the category Dismissals.

**Table 26: Average Number of Days from Date of DWI Arrest to Date of Court Disposition in Rio Arriba County and the State, 2016**

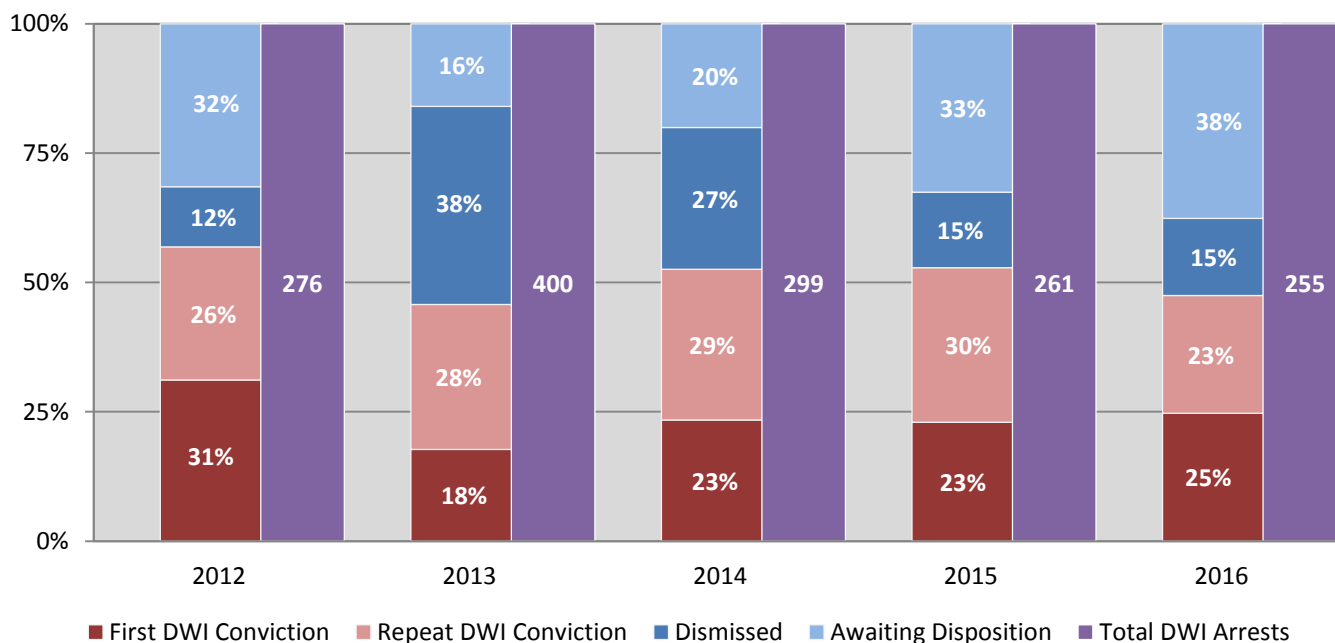
Court Disposition	Average Number of Days		Deviation from Statewide Average
	Rio Arriba County	Statewide	
DWI Conviction	166	157	9
DWI Dismissal	152	179	-27

**Table 27: Court Disposition of DWI Arrests in Rio Arriba County, 2012-2016**

Year of DWI Arrest <sup>1</sup>	Court Disposition				Total DWI Arrests
	First DWI Conviction	Repeat DWI Conviction	Dismissed	Awaiting Disposition	
2012	86	71	32	87	276
2013	71	112	153	64	400
2014	70	87	82	60	299
2015	60	78	38	85	261
2016	63	58	38	96	255

<sup>1</sup> Values are based upon the year of the arrest.

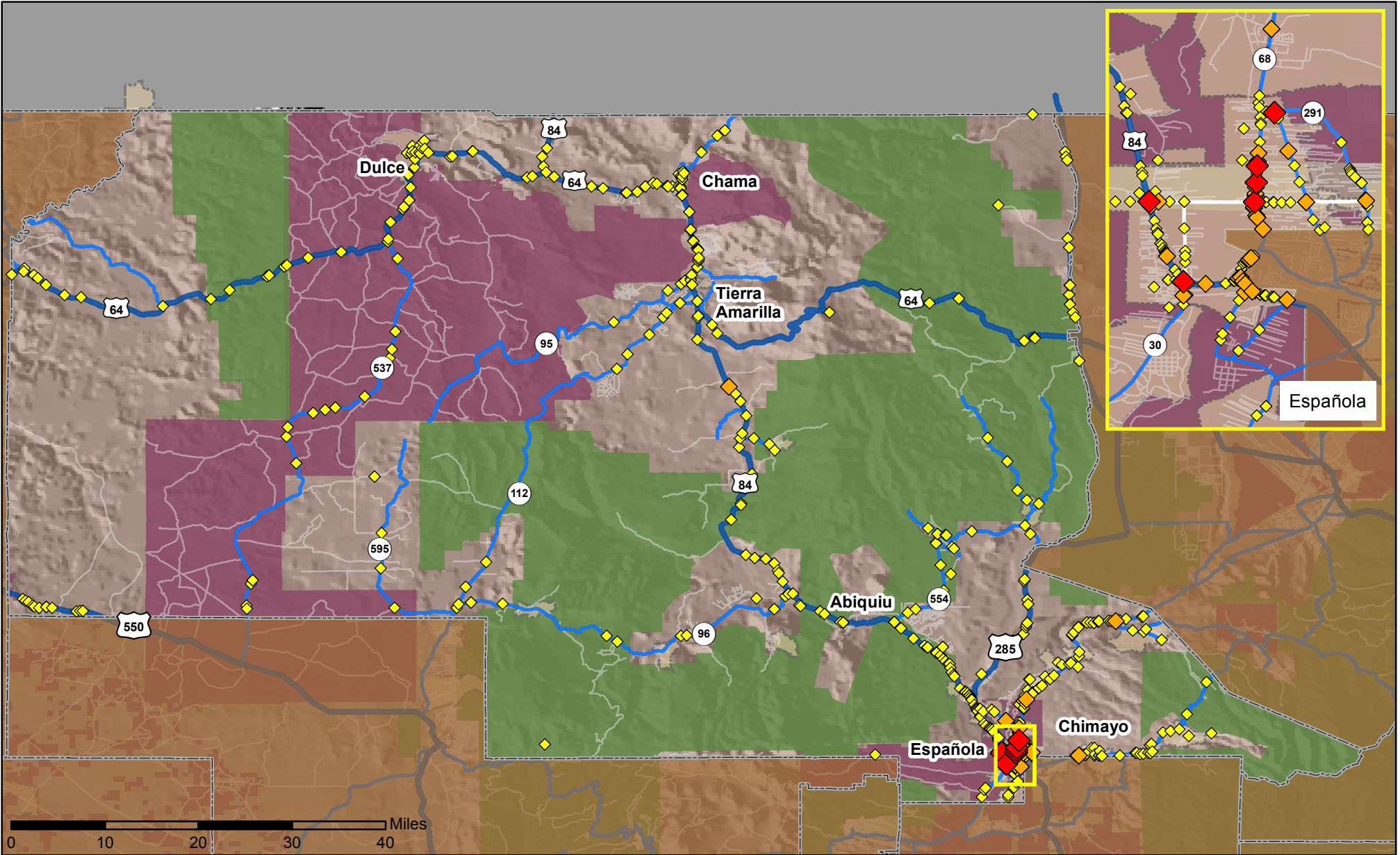
**Figure 14: Court Dispositions by Percentage of DWI Arrests in Rio Arriba County, 2012-2016**



\*Table 27 contains the values used to calculate percentages shown in Figure 14.

# Crashes in Rio Arriba County, New Mexico, 2016

Map created by the Traffic Research Unit, Geospatial & Population Studies at UNM



## Legend

Data Source: NMDOT Crash File 2016  
<http://tru.unm.edu> CO#5801 tru@unm.edu

- Forest & Wildlife Areas
- Reservations & Pueblos
- County Boundaries
- City Boundaries

- Interstate Highways
- U.S. Highways
- State Highways
- Streets & Roadways

## Crashes 2016

- 1 - 2 Crashes
- 3 - 10 Crashes
- 11 - 24 Crashes