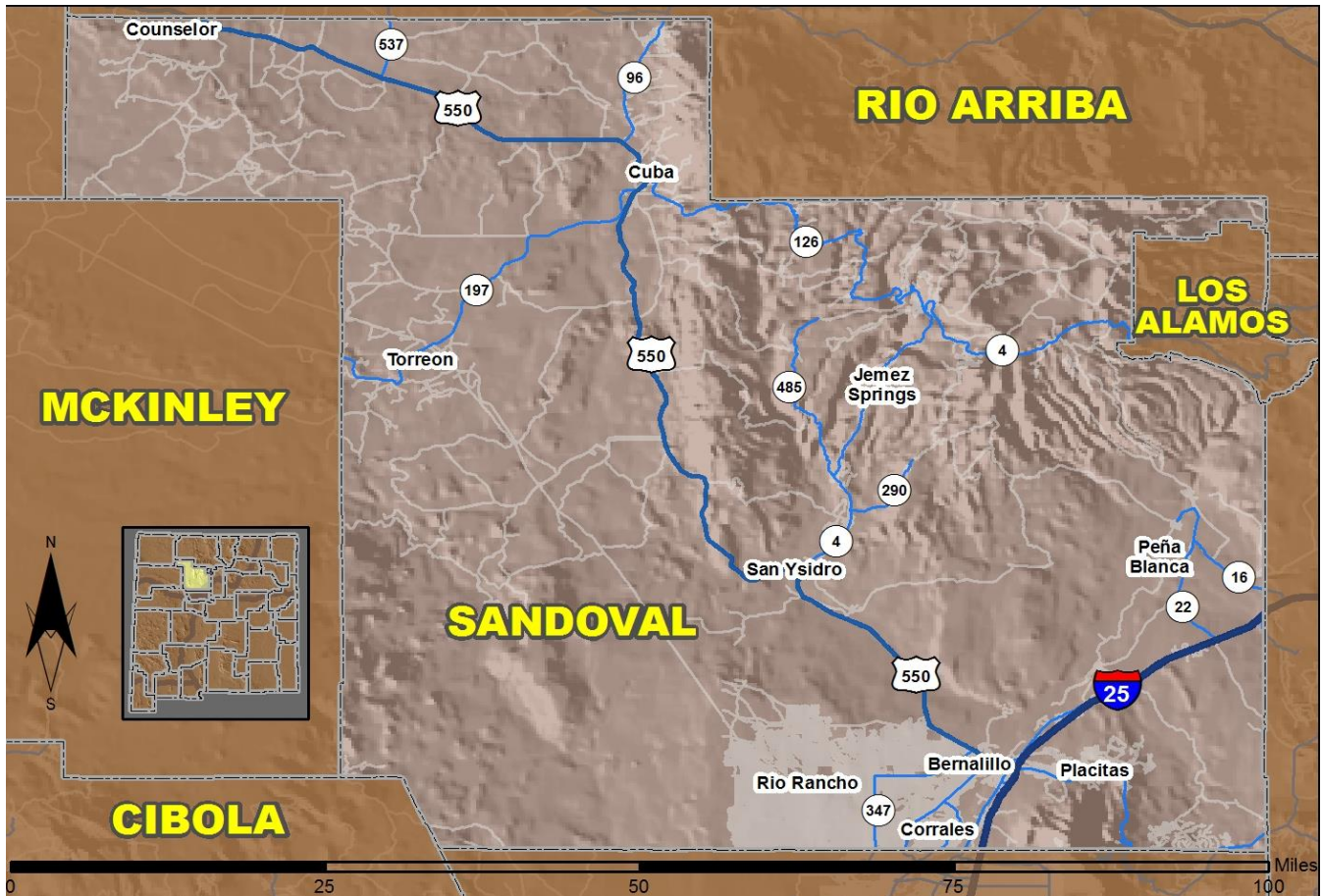


2016 Community Report

Sandoval County



Produced for the New Mexico Department of Transportation,
Traffic Safety Division, Traffic Records Bureau,
Under Contract 5801 by the University of New Mexico,
Geospatial and Population Studies, Traffic Research Unit

Distributed in compliance with New Mexico Statute 66-7-214
as a reference source regarding New Mexico traffic crashes

For the purposes of this report, data are compiled by the University of New Mexico, Geospatial and Population Studies, Traffic Research Unit (TRU), on behalf of the New Mexico Department of Transportation (NMDOT). Data in this report may differ from that in other data sources, such as the Federal Fatality Analysis Reporting System (FARS), due to the timing of publications and rules for how data are compiled and maintained in Federal vs. State databases. If you have questions regarding this report, please contact the Traffic Safety Division at 505-827-0427.

<http://tru.unm.edu/Crash-Reports/Community-Reports/>

Definitions

Aggravated DWI – A driver arrested for 1) driving with a BAC of 0.16 or higher, 2) driving under the influence of alcohol or drugs and causing bodily injury to a human being as a result, or 3) driving under the influence of alcohol or drugs and refusing to submit to a BAC test at the time of arrest for DWI.

Alcohol-involved Crash – A crash for which the Uniform Crash Report indicated that 1) a DWI citation was issued, 2) alcohol was a contributing factor, or 3) a person in control of a vehicle (including a pedestrian or pedalcyclist) was suspected of being under the influence of alcohol.

Alcohol-involved Driver – A person in control of a vehicle who was cited for DWI or indicated on the Uniform Crash Report as being either suspected or determined by testing to be under the influence of alcohol. There can be multiple alcohol-involved drivers in a single alcohol-involved crash.

Crash – A reported incident on a public roadway involving one or more motor vehicles that resulted in death, personal injury, or at least \$500 in property damage. Crashes on private property (such as a parking lot) are not included.

DWI Arrest (Citation) – In this report, a DWI arrest (a.k.a. a DWI citation) is a driver arrested for either DWI or aggravated DWI. New Mexico’s legal limit for presumption of driving while intoxicated (DWI) is 0.08 for non-commercial drivers older than 21 years of age, 0.04 for commercial vehicle drivers, and 0.02 for drivers younger than 21 years of age.

DWI Conviction – A driver convicted of driving under the intoxicating influence of alcohol, narcotics, or pathogenic drugs, including aggravated DWI.

Fatal Crash – A crash in which at least one person was killed. More than one person can be killed in a single fatal crash.

Fatalities – The number of people killed in a crash. The terms “killed” and “deaths” are synonymous with “fatalities.” A fatality is crash-related if it occurs at the time of the crash or if the person(s) involved in the crash dies within 30 days.

Injury Crash – A reported crash in which at least one person was injured. Injury crashes involve at least one suspected serious injury (Class A), suspected minor injury (Class B), or possible injury (Class C). Fatal crashes are not included.

Missing Data – An indication that the applicable field on the UCR form was left blank or contained an invalid code. Starting with crashes that occurred in 2012, improvements in the identification of missing data in the NMDOT crash database led to an increase in the reported amount of missing data.

Pedalcyclist – A person riding a mechanism of transport that is powered solely by pedals (a.k.a. bicyclist).

Pedestrian – A person on foot, walking, running, jogging, hiking, sitting or lying down who is involved in a motor vehicle traffic crash.

Sources

Crash Data – New Mexico Department of Transportation, Traffic Safety Division, Traffic Records Bureau, Traffic Crash Database, as of the report date below. Crash data are compiled using NMDOT Uniform Crash Reports (UCR), submitted by law enforcement agencies in the state, for any incident on a public roadway involving one or more motor vehicles that resulted in death, injury, or at least \$500 in property damage. These reports are processed by the NMDOT Traffic Records Bureau and analyzed by the University of New Mexico, Geospatial and Population Studies, Traffic Research Unit (TRU).

DWI Citation Tracking System (CTS) – New Mexico Taxation and Revenue Department (NM TRD), Motor Vehicle Division (MVD), DWI Citation Tracking System (CTS), as of December 2017. Repeat offenders are identified by the combination of account key, arrest date, and citation number. County data are based upon the county where the arrest took place. City data are based upon the city where the offender resides.

Urban Areas – New Mexico Department of Transportation, Asset Management and Planning, 2010 U.S. Census Urbanized Area Boundaries, NMDOT-Adjusted, and U.S. Census Urban Clusters, August 21, 2013. In crashes before 2013, “urban” was defined as a town or city with a population of at least 2,500 people.

Table 1: Total Crashes and Alcohol-involved Crashes by Crash Severity in Sandoval County, 2007-2016

Year	Total Crashes				Alcohol-involved Crashes			
	Fatal	Injury	Property Damage Only	Total	Fatal	Injury	Property Damage Only	Total
2007	12	591	1,411	2,014	7	45	47	99
2008	17	614	1,258	1,889	6	65	65	136
2009	20	612	1,332	1,964	9	35	67	111
2010	12	599	1,338	1,949	5	40	54	99
2011	11	544	1,266	1,821	5	37	59	101
2012	11	446	1,132	1,589	7	43	63	113
2013	13	482	1,156	1,651	5	43	57	105
2014	10	392	1,030	1,432	3	43	43	89
2015	5	491	1,197	1,693	2	37	55	94
2016	11	569	1,350	1,930	6	40	63	109

Figure 1: Alcohol-involved Fatal and Injury Crashes Compared with Non-alcohol-involved Fatal and Injury Crashes in Sandoval County, 2007-2016

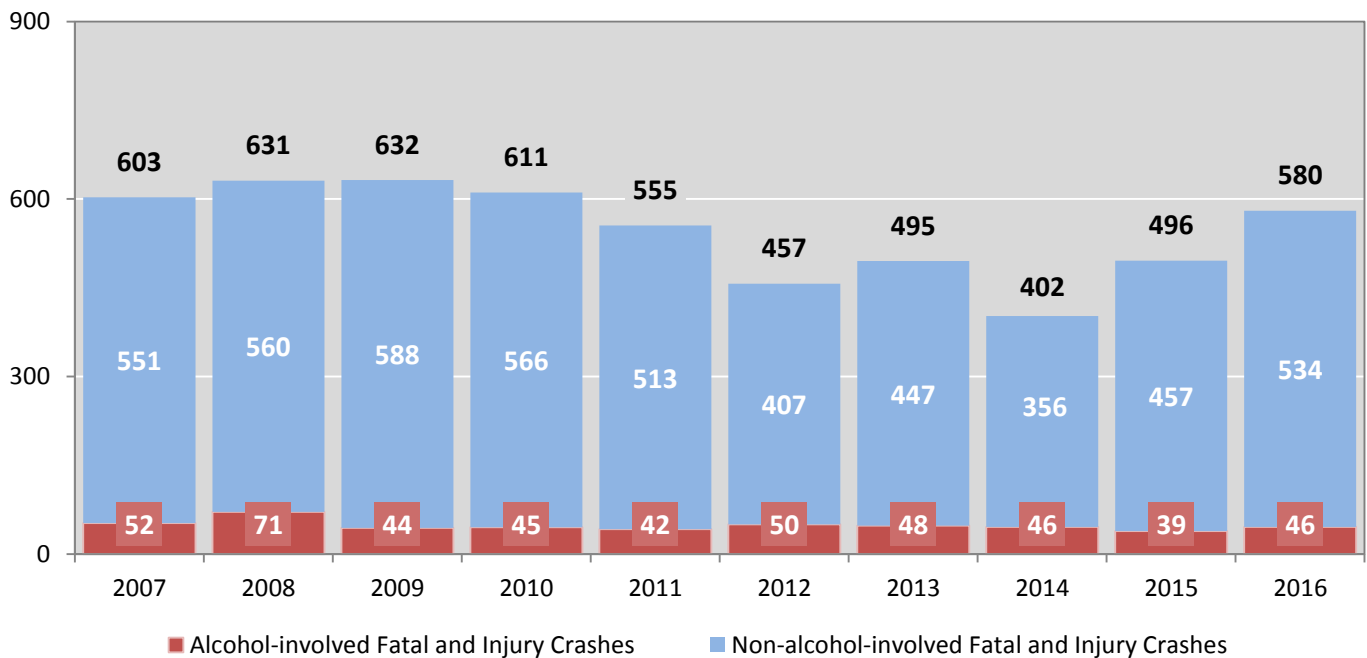


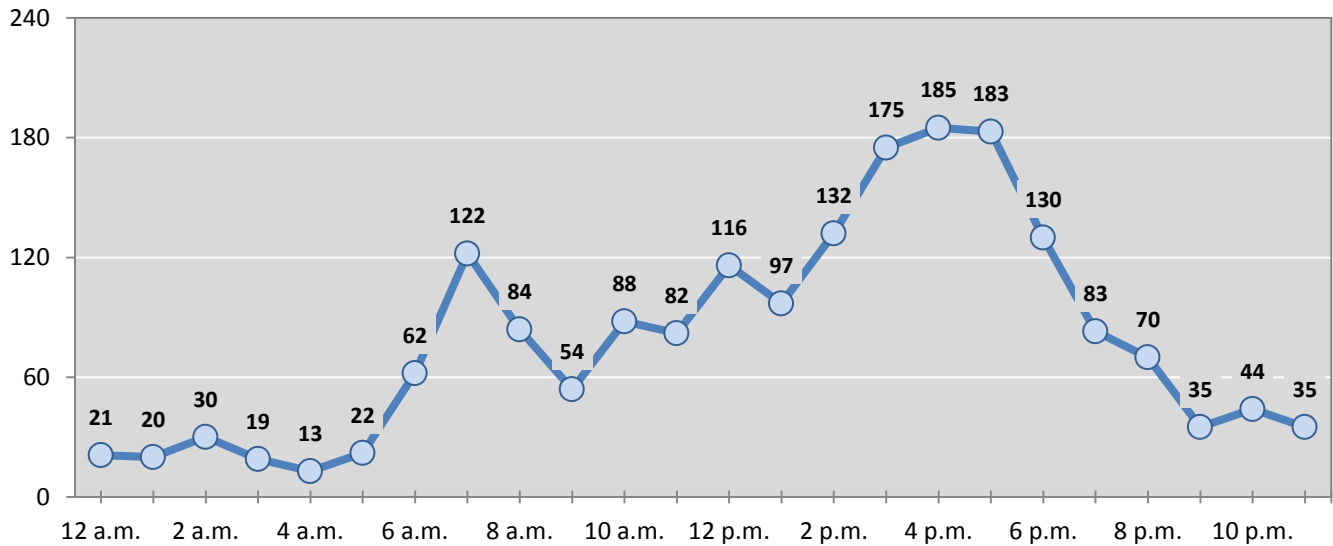
Table 2: Crashes by Month in Sandoval County, 2012-2016

Month	Crashes					5-Year Average
	2012	2013	2014	2015	2016	
January	128	117	118	152	133	130
February	102	146	132	98	141	124
March	93	108	150	70	140	112
April	137	126	78	114	159	123
May	151	147	137	135	156	145
June	139	147	95	156	139	135
July	118	107	71	143	160	120
August	141	173	90	147	168	144
September	122	152	135	176	188	155
October	138	155	124	155	193	153
November	157	156	163	150	171	159
December	163	117	139	197	182	160
Total Crashes	1,589	1,651	1,432	1,693	1,930	1,659

Table 3: Alcohol-involved Crashes by Month in Sandoval County, 2012-2016

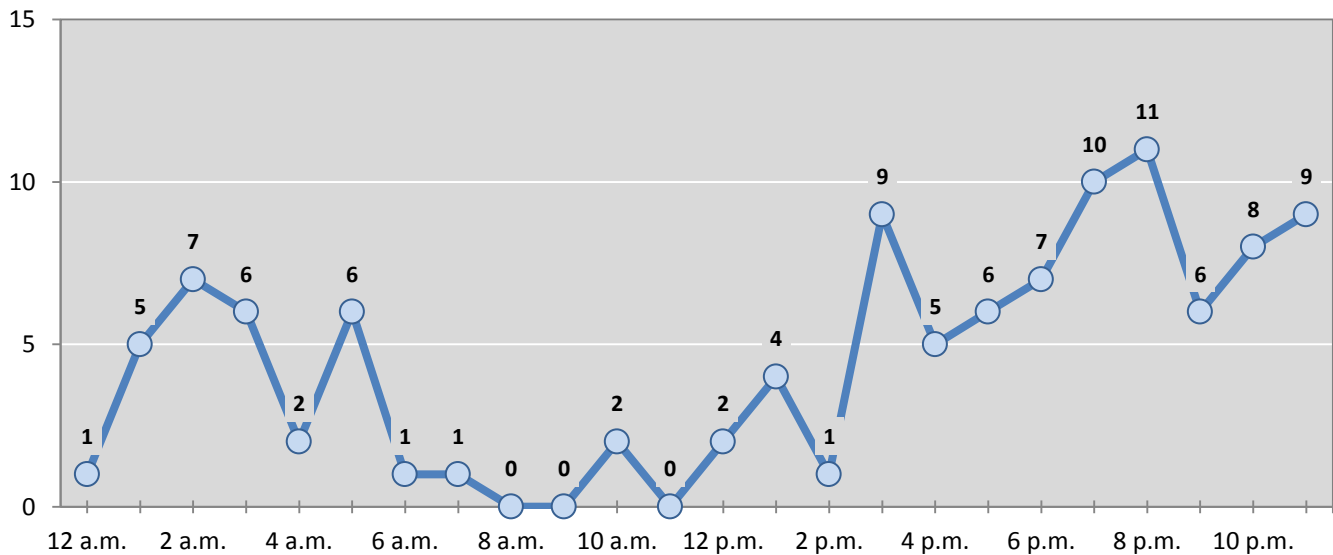
Month	Alcohol-involved Crashes					5-Year Average
	2012	2013	2014	2015	2016	
January	7	7	11	7	6	8
February	7	12	8	6	5	8
March	7	15	10	3	10	9
April	7	11	3	10	9	8
May	9	8	8	6	11	8
June	13	4	9	6	13	9
July	9	8	6	11	10	9
August	11	9	5	10	7	8
September	11	7	10	10	7	9
October	9	4	5	6	11	7
November	11	11	9	9	7	9
December	12	9	5	10	13	10
Total Crashes	113	105	89	94	109	102

Figure 2: Crashes by Hour in Sandoval County, 2016



* In 2016, Sandoval County had 28 crashes for which hour data were missing.

Figure 3: Alcohol-involved Crashes by Hour in Sandoval County, 2016



* In 2016, Sandoval County had 0 alcohol-involved crashes for which hour data were missing.

Table 4: Alcohol-involved Crashes by Day of Week in Sandoval County, 2012-2016

Day of Week	Alcohol-involved Crashes					5-Year Average
	2012	2013	2014	2015	2016	
Sunday	22	19	19	14	17	18
Monday	11	12	9	13	10	11
Tuesday	10	8	8	9	14	10
Wednesday	17	11	9	11	12	12
Thursday	11	16	11	10	6	11
Friday	16	20	19	20	31	21
Saturday	26	19	14	17	19	19
Total Crashes	113	105	89	94	109	102

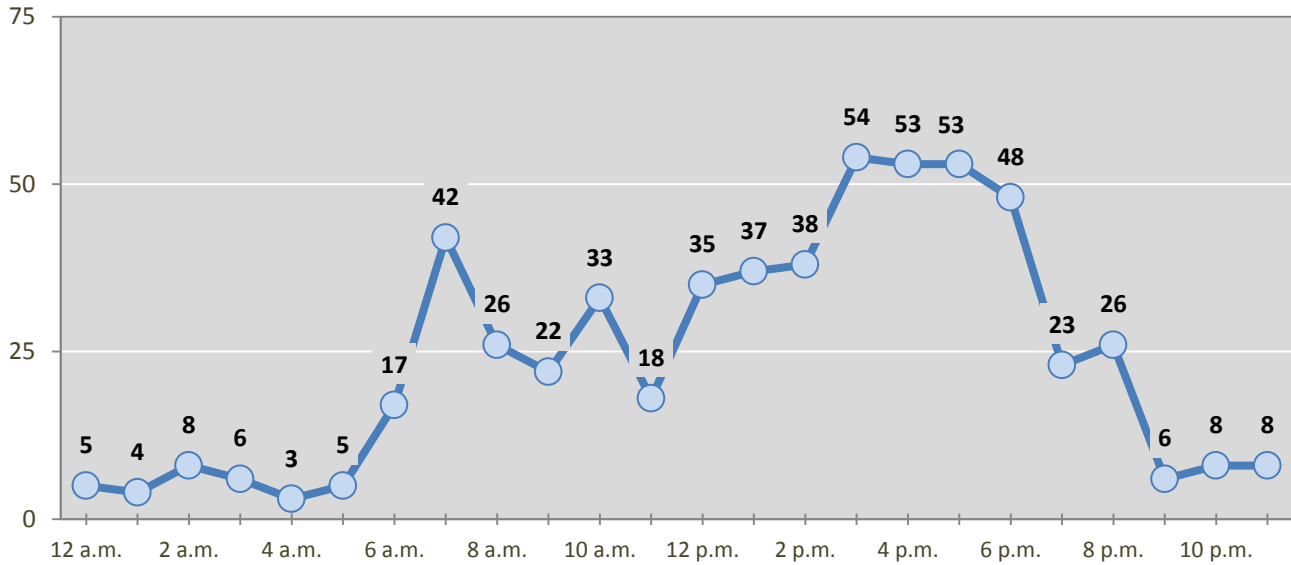
Table 5: Fatal and Injury Crashes by Day of Week in Sandoval County, 2012-2016

Day of Week	Fatal and Injury Crashes					5-Year Average
	2012	2013	2014	2015	2016	
Sunday	58	62	52	69	59	60
Monday	56	61	59	62	94	66
Tuesday	73	55	74	69	83	71
Wednesday	60	92	60	60	80	70
Thursday	72	72	49	76	84	71
Friday	66	89	52	81	99	77
Saturday	72	64	56	79	81	70
Total Crashes	457	495	402	496	580	486

Table 6: Pedestrian and Pedalcyclist Crashes by Day of Week in Sandoval County, 2012-2016

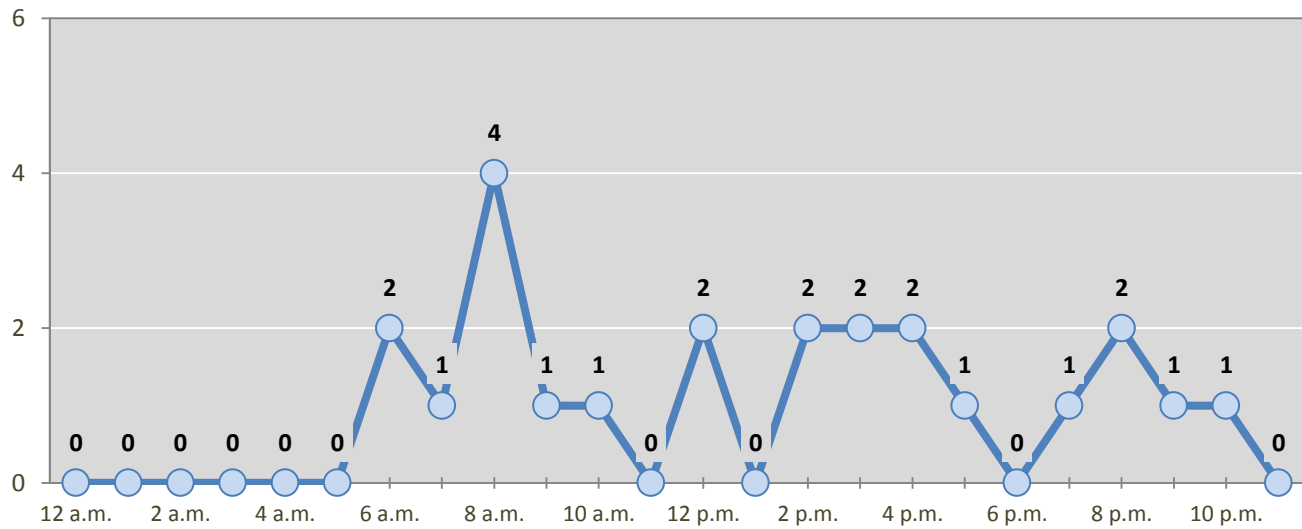
Day of Week	Pedestrian and Pedalcyclist Crashes					5-Year Average
	2012	2013	2014	2015	2016	
Sunday	6	1	0	2	3	2
Monday	4	3	3	2	4	3
Tuesday	6	1	1	3	3	3
Wednesday	2	5	6	2	3	4
Thursday	11	2	2	4	4	5
Friday	1	3	2	4	4	3
Saturday	2	1	1	3	2	2
Total Crashes	32	16	15	20	23	21

Figure 4: Fatal and Injury Crashes by Hour in Sandoval County, 2016



* In 2016, Sandoval County had 2 crashes for which hour data were missing.

Figure 5: Pedestrian and Pedalcyclist Crashes by Hour in Sandoval County, 2016



* In 2016, Sandoval County had 0 crashes for which hour data were missing.

Table 7: Severity of Injuries to People in Crashes by Rural and Urban Location in Sandoval County, 2016

Urban and Rural Locations by Alcohol-involvement	People in Crashes by Severity of Injuries					Total People
	Fatalities (Class K)	Suspected Serious Injuries (Class A)	Suspected Minor Injuries (Class B)	Possible Injuries (Class C)	No Apparent Injuries (Class O)	
People in Alcohol-involved Crashes	8	3	26	26	162	225
Urban	4	1	20	22	132	179
Rural Non-Interstate	4	1	6	3	26	40
Rural Interstate	0	1	0	1	4	6
People in Crashes	16	34	212	636	4,079	4,977
Urban	5	24	137	569	3,608	4,343
Rural Non-Interstate	10	7	53	40	311	421
Rural Interstate	1	3	22	27	160	213
Percent in Alcohol-involved Crashes	50%	9%	12%	4%	4%	5%

Table 8: Total Crashes by Roadway System and Crash Severity in Sandoval County, 2012-2016

Crash Severity by System	Crashes by Year					5-Year Average
	2012	2013	2014	2015	2016	
Total Rural Interstate	116	29	73	80	87	77
Fatal Crash	4	0	0	0	1	1
Injury Crash	32	9	18	21	28	22
Property Damage Only Crash	80	20	55	59	58	54
Total Rural Non-Interstate	153	178	213	246	219	202
Fatal Crash	4	5	3	2	6	4
Injury Crash	39	51	51	75	58	55
Property Damage Only Crash	110	122	159	169	155	143
Total Urban	1,320	1,444	1,146	1,367	1,624	1,381
Fatal Crash	3	8	7	3	4	5
Injury Crash	375	422	323	395	483	400
Property Damage Only Crash	942	1,014	816	969	1,137	976

Table 9: Total Crashes by Crash Classification in Sandoval County, 2012-2016

Crash Classification	Total Crashes by Year					5-Year Average
	2012	2013	2014	2015	2016	
Animal	55	58	59	42	63	55
Fixed Object	216	234	213	254	243	232
Other (Non-Collision)	41	31	29	32	25	32
Other (Object)	61	44	46	48	30	46
Other Vehicle	976	1,056	904	1,104	1,365	1,081
Overturn/Rollover	102	102	83	54	75	83
Parked Vehicle	81	89	59	48	49	65
Pedalcyclist	19	7	6	8	10	10
Pedestrian	12	9	9	12	13	11
Railroad Train	0	0	0	0	0	0
Rollover	0	0	2	55	21	16
Vehicle on Other Road	7	5	5	6	8	6
Missing Data	19	16	17	30	28	22
Total Crashes	1,589	1,651	1,432	1,693	1,930	1,659

Table 10: Vehicles in Crashes by Vehicle Type in Sandoval County, 2012-2016

Vehicle Type ¹	Vehicles in Crashes by Vehicle Type					5-Year Average
	2012	2013	2014	2015	2016	
Bus	10	7	10	7	18	10
Motorcycle	50	69	55	57	48	56
Passenger	1,310	1,507	1,299	1,599	1,964	1,536
Pedalcyclist	21	7	8	8	10	11
Pedestrian	12	9	9	12	13	11
Pickup	448	487	414	533	576	492
Semi	64	65	66	68	81	69
Van/SUV/4WD	608	534	479	551	788	592
Other Vehicle	63	104	31	52	8	52
Missing Data	235	167	196	186	114	180
Total Vehicles	2,821	2,956	2,567	3,073	3,620	3,007

¹ Pedestrians and pedalcyclists are counted as non-motorized vehicles, when involved in a crash with a motor vehicle. See Page 17 for data on drivers of non-motorized vehicles in crashes (i.e. pedestrians and pedalcyclists).

Table 11: Motor Vehicle Drivers in Crashes by Vehicle Type and Age Group in Sandoval County, 2016

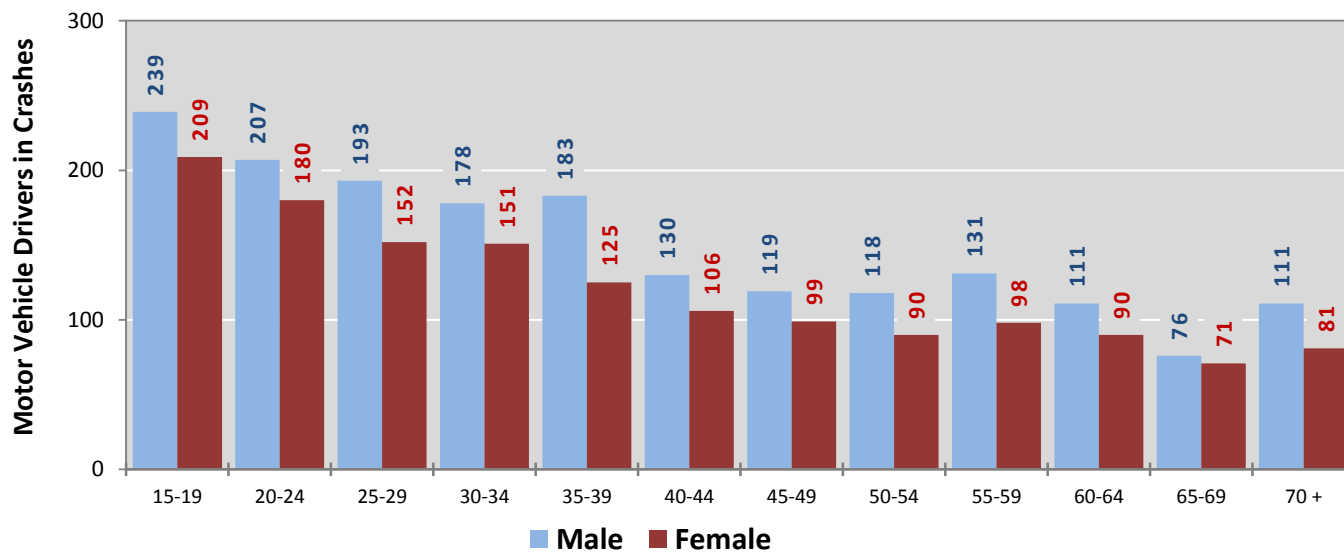
Age Groups	Motor Vehicle ¹ Drivers by Vehicle Type and Age Group								Total Drivers
	Bus	Motor-cycle	Passenger	Pickup	Semi	Van 4WD SUV	Other Vehicle	Missing Data	
15-19	0	6	292	56	1	91	1	5	452
20-24	1	3	295	38	6	46	0	2	391
25-29	1	4	211	55	1	64	3	6	345
30-34	0	8	174	59	6	78	0	4	329
35-39	0	3	144	62	8	92	0	1	310
40-44	2	3	103	57	9	63	1	0	238
45-49	2	3	110	29	11	61	0	2	218
50-54	1	5	104	37	9	51	1	0	208
55-59	3	6	117	43	7	51	0	3	230
60-64	5	5	94	39	11	46	0	1	201
65-69	3	0	81	23	2	37	1	2	149
70 +	0	0	104	28	4	56	0	1	193
Missing Data	0	2	135	50	6	52	1	87	333
Total Drivers	18	48	1,964	576	81	788	8	114	3,597

Table 12: Alcohol-involved Motor Vehicle Drivers in Crashes by Vehicle Type and Age Group in Sandoval County, 2016

Age Groups	Alcohol-involved Motor Vehicle ¹ Drivers by Vehicle Type and Age Group								Total Drivers
	Bus	Motor-cycle	Passenger	Pickup	Semi	Van 4WD SUV	Other Vehicle	Missing Data	
15-19	0	0	5	1	0	0	0	0	6
20-24	0	0	14	1	1	2	0	0	18
25-29	0	0	9	8	0	3	0	0	20
30-34	0	0	8	1	0	2	0	1	12
35-39	0	0	6	2	1	5	0	0	14
40-44	0	1	5	1	0	4	0	0	11
45-49	0	0	4	1	0	4	0	0	9
50-54	0	0	1	2	0	0	0	0	3
55-59	0	0	4	0	0	0	0	0	4
60-64	0	0	1	1	0	0	0	0	2
65-69	0	0	0	1	0	0	0	0	1
70 +	0	0	0	1	0	2	0	0	3
Missing Data	0	0	2	1	0	0	0	1	4
Total Drivers	0	1	59	21	2	22	0	2	107

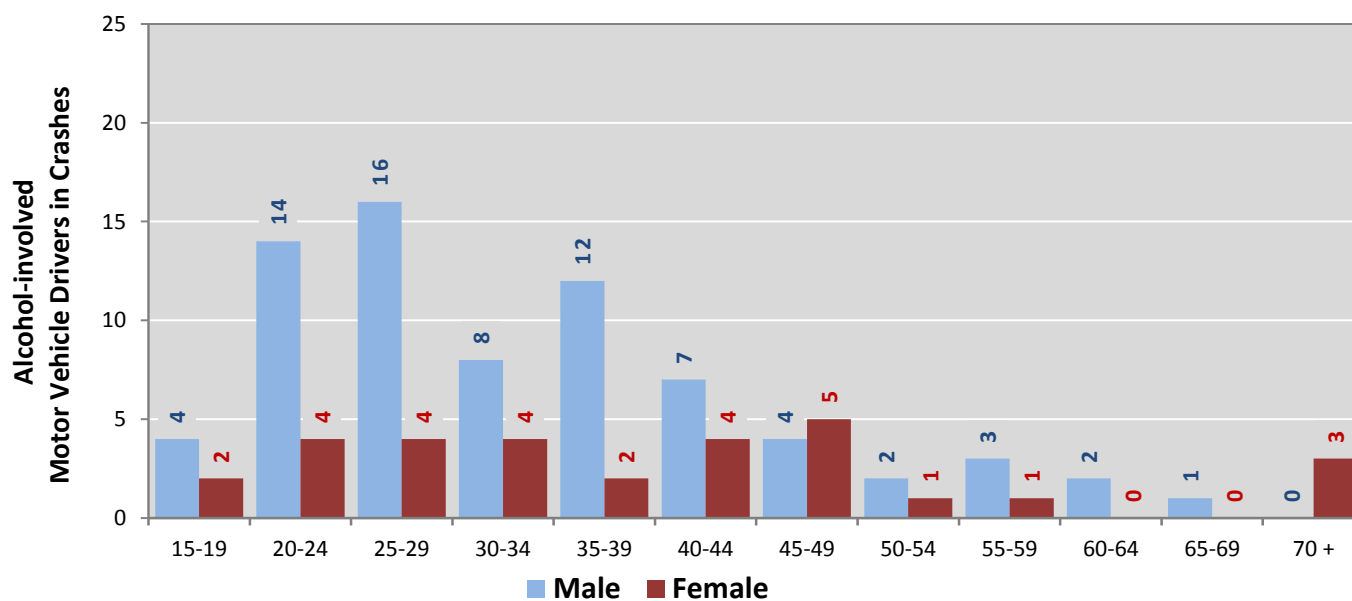
¹ See Page 17 for data on drivers of non-motorized vehicles in crashes (i.e. pedestrians and pedalcyclists).

Figure 6: Motor Vehicle Drivers in Crashes by Age Group and Sex in Sandoval County, 2016



* In 2016, Sandoval County had 349 drivers in crashes for which age or sex data were missing.

Figure 7: Alcohol-involved Motor Vehicle Drivers in Crashes by Age Group and Sex in Sandoval County, 2016



* In 2016, Sandoval County had 4 drivers in crashes for which age or sex data were missing.

Table 13: Alcohol-involved Motor Vehicle Drivers Under 21 (Ages 15-20) in Crashes in Sandoval County, 2012-2016

Age ¹	Year					5-Year Total
	2012	2013	2014	2015	2016	
15	0	1	0	0	0	1
16	0	1	0	1	0	2
17	2	1	1	1	1	6
18	6	2	3	1	2	14
19	4	0	2	1	3	10
20	4	4	4	3	3	18
Total Drivers	16	9	10	7	9	51

Table 14: Motor Vehicle Drivers Under 21 (Ages 15-20) in Crashes by Age, Sex and Alcohol-involvement in Sandoval County, 2016

Age ¹	Total Drivers				Alcohol-involved Drivers			
	Sex		Total Drivers	Percent of Total	Sex		Total Drivers	Percent of Total
	Male	Female			Male	Female		
15	9	9	18	3%	0	0	0	0%
16	50	40	90	17%	0	0	0	0%
17	63	62	125	23%	1	0	1	11%
18	65	49	114	21%	1	1	2	22%
19	52	49	101	19%	2	1	3	33%
20	47	46	93	17%	1	2	3	33%
Total Drivers	286	255	541	100%	5	4	9	100%

¹ For analysis of drivers under age 21, when the driver age or sex are not identified on the crash report (typically hit-and-run drivers), the driver data are considered unreliable and are excluded from the analysis.

**Table 15: Frequency of Contributing Factors in Crashes
by Crash Severity in Sandoval County, 2016**

Contributing Factors	Frequency of Contributing Factor ¹ by Crash Severity			
	Frequency in Fatal Crashes	Frequency in Injury Crashes	Frequency in Property Damage Only Crashes	Frequency in All Crashes
Human	28	865	1,774	2,667
Driver Inattention	7	269	549	825
Following Too Closely	0	141	289	430
Failed to Yield Right of Way	1	111	183	295
Excessive Speed	3	62	93	158
Other Improper Driving	2	39	108	149
Alcohol Involved	6	40	65	111
Avoid No Contact - Vehicle	0	28	63	91
Made Improper Turn	0	18	72	90
Speed Too Fast for Conditions	2	26	57	85
Improper Lane Change	0	12	69	81
Disregarded Traffic Signal	0	32	32	64
Improper Backing	0	4	49	53
Drove Left Of Center	2	18	26	46
Avoid No Contact - Other	0	13	20	33
Improper Overtaking	0	4	25	29
Drug Involved	3	12	14	29
Cell Phone	0	11	17	28
Passed Stop Sign	1	7	19	27
Vehicle Skidded Before Brake	0	8	7	15
Failed to Yield to Police Vehicle	0	3	4	7
High Speed Pursuit	0	1	5	6
Pedestrian Error	1	4	1	6
Driverless Moving Vehicle	0	0	4	4
Texting	0	2	2	4
Failed to Yield to Emergency Vehicle	0	0	1	1
Vehicle	0	10	37	47
Other Mechanical Defect	0	4	14	18
Defective Tires	0	2	14	16
Inadequate Brakes	0	2	5	7
Defective Steering	0	2	4	6
Environment	1	4	3	8
Road Defect	1	4	3	8
Low Visibility Due to Smoke	0	0	0	0
Traffic Control Not Functioning	0	0	0	0
Other	8	524	1,080	1,612
None	4	439	892	1,335
Other - No Driver Error	4	85	188	277

¹ Multiple contributing factors may be reported for any vehicle in a crash.

Table 16: People in Crashes by Crash Classification and Severity of Injuries in Sandoval County, 2016

Crash Classification	People in Crashes by Severity of Injuries					Total People
	Fatalities (Class K)	Suspected Serious Injuries (Class A)	Suspected Minor Injuries (Class B)	Possible Injuries (Class C)	No Apparent Injuries (Class O)	
Animal	0	0	6	6	106	118
Fixed Object	0	6	24	27	268	325
Other (Non-Collision)	0	2	7	2	32	43
Other (Object)	0	0	3	6	36	45
Other Vehicle	11	19	121	561	3,335	4,047
Overturn/Rollover	0	0	29	17	61	107
Parked Vehicle	0	0	0	0	103	103
Pedalcyclist	0	0	6	2	12	20
Pedestrian	1	1	5	4	20	31
Railroad Train	0	0	0	0	0	0
Rollover	4	6	11	7	13	41
Vehicle on Other Road	0	0	0	0	22	22
Missing Data	0	0	0	4	71	75
Total People	16	34	212	636	4,079	4,977

Table 17: Killed or Injured Unbelted People in Crashes by Sex and Age Group in Sandoval County, 2016

Age Groups	Unbelted People Killed or Injured ^{1,2}				Total People
	Male	Percent of Male	Female	Percent of Female	
0-4	0	0%	0	0%	0
5-9	1	4%	0	0%	1
10-14	0	0%	0	0%	0
15-19	3	13%	3	20%	6
20-24	3	13%	2	13%	5
25-29	3	13%	3	20%	6
30-34	4	17%	1	7%	5
35-39	4	17%	1	7%	5
40-44	2	8%	0	0%	2
45-49	0	0%	1	7%	1
50-54	1	4%	1	7%	2
55-59	2	8%	1	7%	3
60-64	1	4%	0	0%	1
65-69	0	0%	1	7%	1
70 +	0	0%	1	7%	1
Missing Data	0	0%	0	0%	0
Total People	24	100%	15	100%	39

¹ People injured are in one of three categories: suspected serious injury, suspected minor injury, or possible injury.

² Excludes people in or on buses, heavy trucks, motorcycles, or ATVs.

Figure 8: Seatbelt Use by People in Crashes with Fatal or Suspected Serious Injuries in Sandoval County, 2012-2016

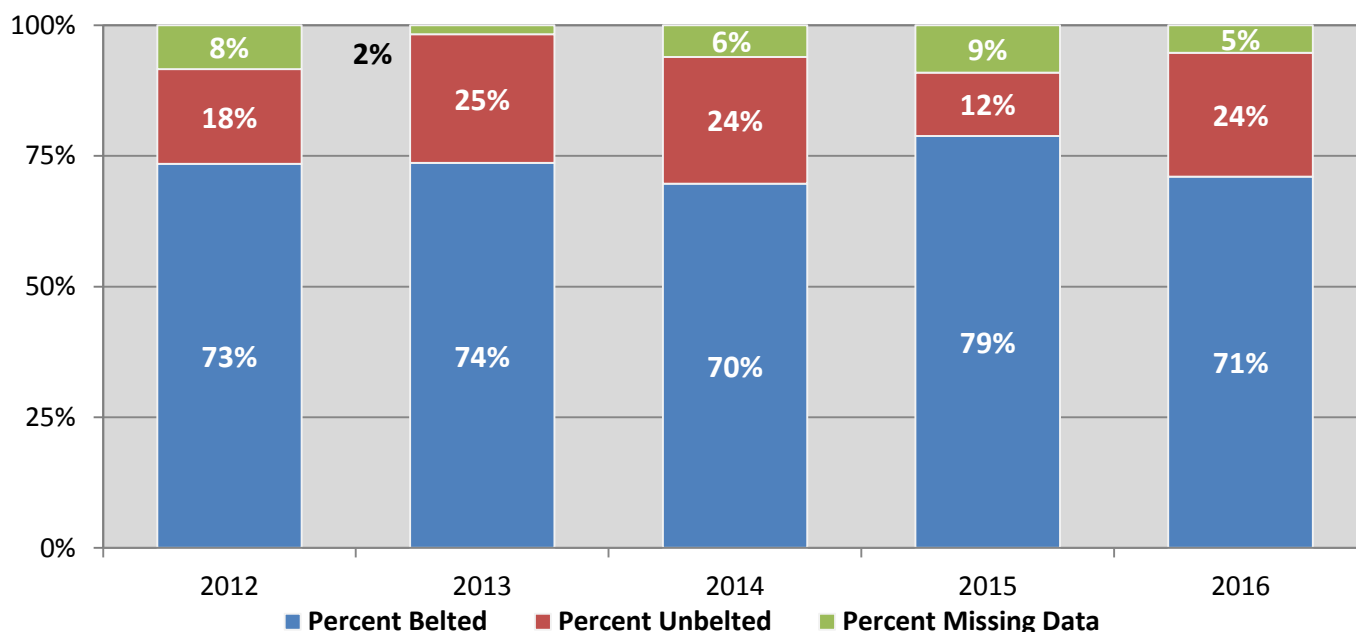
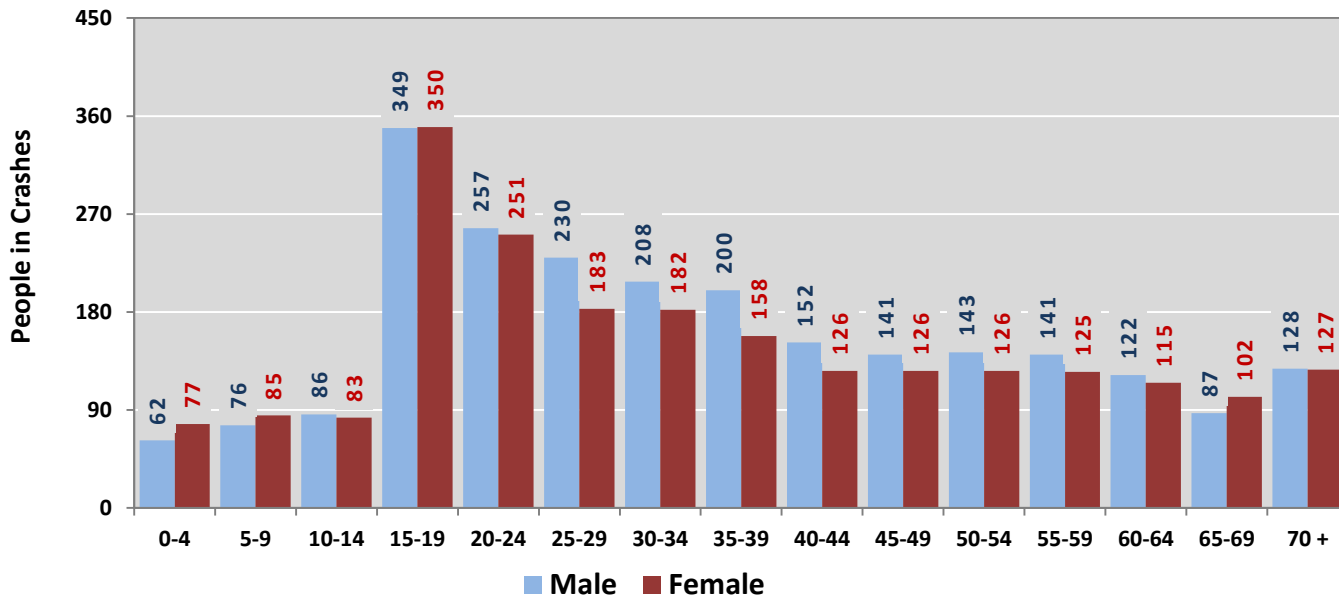
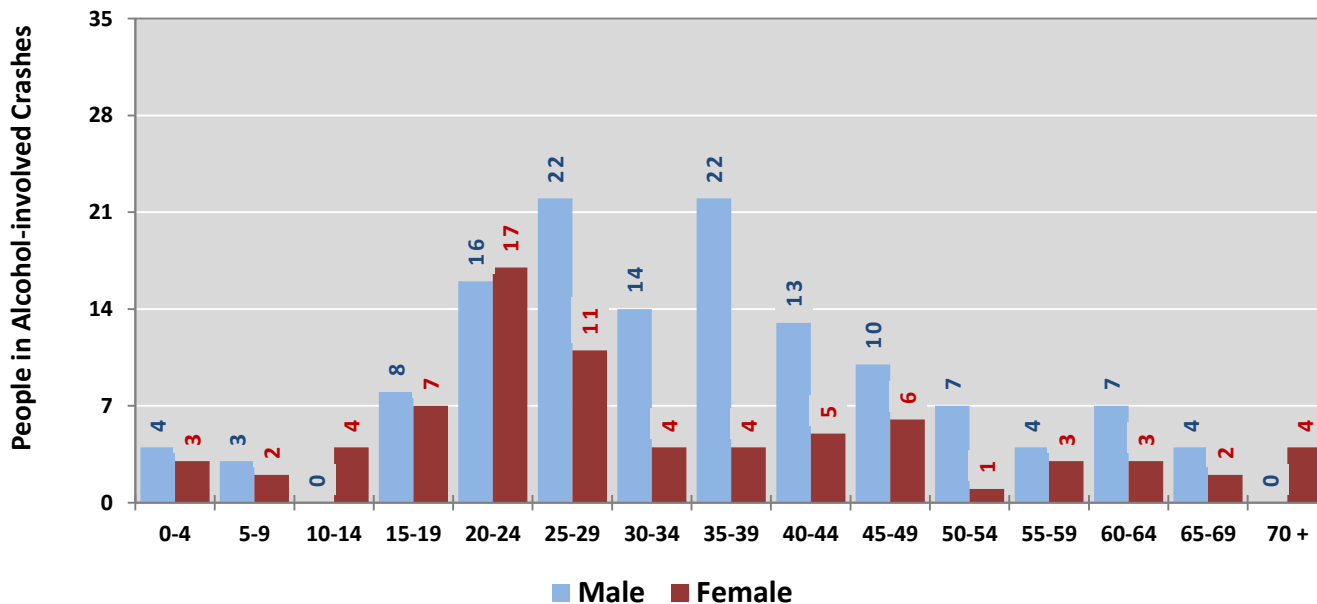


Figure 9: People in Crashes by Age Group and Sex in Sandoval County, 2016



* In 2016, Sandoval County had 379 people in crashes for which age or sex data were missing.

Figure 10: People in Alcohol-involved Crashes by Age Group and Sex in Sandoval County, 2016



* In 2016, Sandoval County had 15 people in alcohol-involved crashes for which age or sex data were missing.

Table 18: Pedestrians and Pedalcyclists in Crashes by Age Group in Sandoval County, 2012-2016

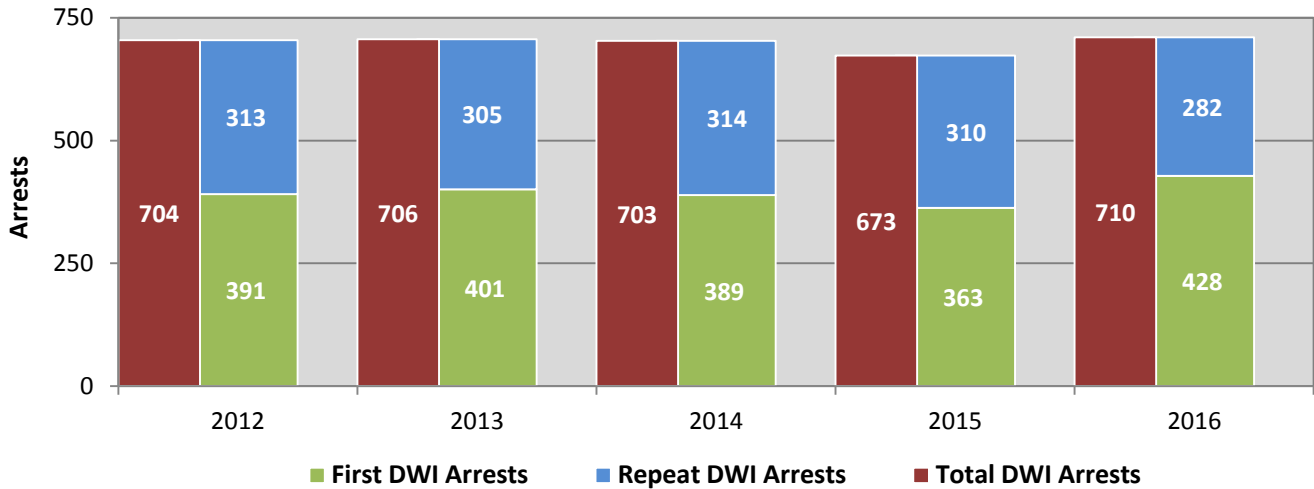
Age Groups	Pedestrians and Pedalcyclists ¹ in Crashes					5-Year Total People
	2012	2013	2014	2015	2016	
0-4	0	0	0	1	0	1
5-9	2	1	1	1	1	6
10-14	4	0	2	4	2	12
15-19	7	3	5	0	1	16
20-24	5	1	1	1	1	9
25-29	2	1	1	2	2	8
30-34	2	0	2	1	3	8
35-39	2	1	1	0	3	7
40-44	1	1	1	2	0	5
45-49	1	2	1	2	0	6
50-54	3	2	0	2	3	10
55-59	0	1	0	1	1	3
60-64	1	0	0	1	1	3
65-69	0	1	0	0	1	2
70 +	0	1	2	0	4	7
Missing Data	3	1	0	2	0	6
Total People	33	16	17	20	23	109

Table 19: Pedestrians and Pedalcyclists in Crashes by Alcohol Involvement and Severity of Injuries in Sandoval County, 2016

Alcohol Involvement	Pedestrians and Pedalcyclists ¹ in Crashes					Total People
	Fatalities (Class K)	Suspected Serious Injuries (Class A)	Suspected Minor Injuries (Class B)	Possible Injuries (Class C)	No Apparent Injury (Class O)	
Total Pedalcyclists	0	0	6	2	2	10
Involved	0	0	1	1	0	2
Not Involved	0	0	5	1	2	8
Total Pedestrians	1	1	5	4	2	13
Involved	1	0	0	0	1	2
Not Involved	0	1	5	4	1	11
Total People	1	1	11	6	4	23

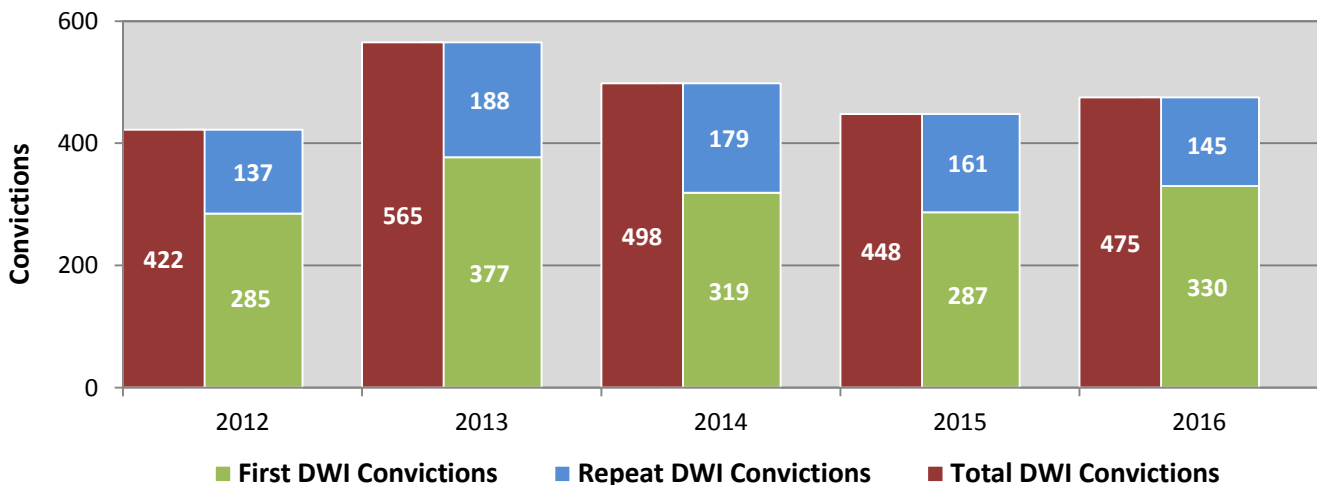
¹ Pedestrians and pedalcyclists are counted as non-motorized vehicles, when involved in a crash with a motor vehicle.

**Figure 11: DWI Arrests in Sandoval County,
Showing First and Repeat DWI Arrests, 2012-2016**



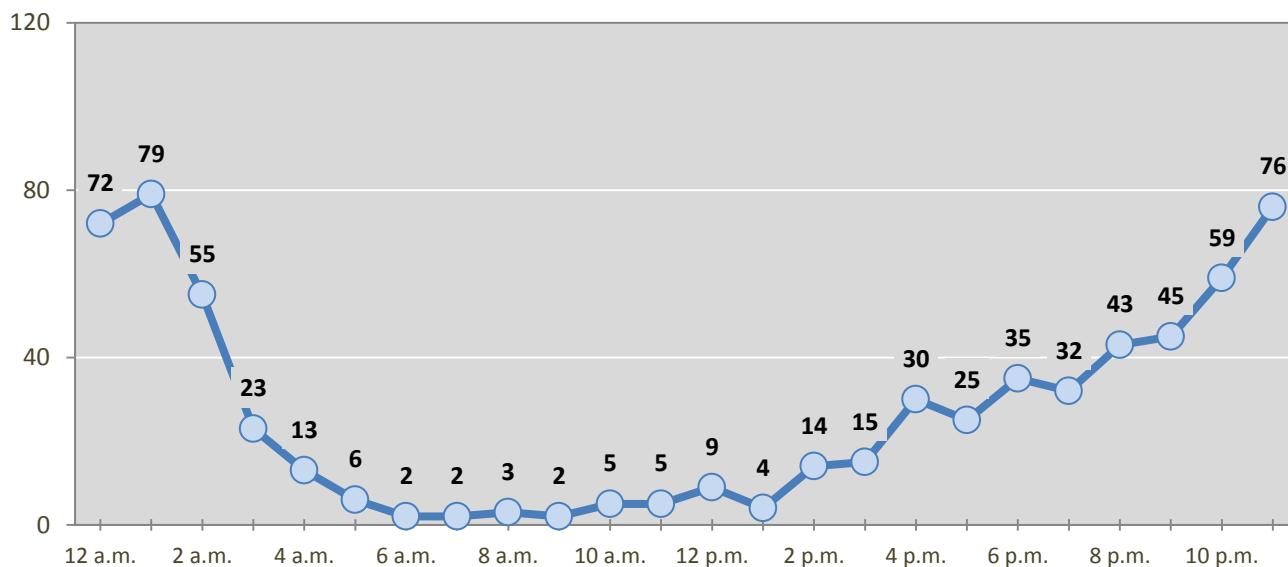
*Values are based upon the year of the arrest.

**Figure 12: DWI Convictions in Sandoval County,
Showing First and Repeat DWI Convictions, 2012-2016**



*Values are based upon the year of the conviction.

Figure 13: DWI Arrests by Hour in Sandoval County, 2016



* In 2016, Sandoval County had 56 arrests for which hour data were missing.

Table 20: DWI Arrests by Day of Week in Sandoval County, 2012-2016

Day of Week	Year					5-Year Average
	2012	2013	2014	2015	2016	
Sunday	138	141	133	138	127	135
Monday	60	52	60	55	46	55
Tuesday	56	66	49	48	49	54
Wednesday	76	54	67	69	84	70
Thursday	85	87	103	86	92	91
Friday	115	112	118	115	151	122
Saturday	174	194	173	162	161	173
Total Arrests	704	706	703	673	710	699

Table 21: Driver First DWI Arrests by Age Group in Sandoval County, 2012-2016

Age Groups	Driver First DWI Arrests ¹				
	2012	2013	2014	2015	2016
15-19	32	28	23	15	28
20-24	82	110	85	95	102
25-29	74	63	76	69	74
30-34	39	48	58	56	68
35-39	44	51	36	26	45
40-44	35	28	39	25	34
45-49	31	20	25	22	20
50-54	29	21	12	24	22
55-59	12	19	17	11	14
60-64	8	4	6	7	8
65-69	3	6	3	7	7
70 +	1	2	4	1	2
Missing Data	1	1	5	5	4
Total Drivers	391	401	389	363	428

¹ Values are based upon the year of the arrest.

Table 22: Driver Repeat DWI Arrests by Age Group in Sandoval County, 2012-2016

Age Groups	Driver Repeat DWI Arrests ¹				
	2012	2013	2014	2015	2016
15-19	2	1	0	3	0
20-24	27	31	23	21	23
25-29	51	67	46	57	45
30-34	55	50	54	42	53
35-39	35	38	49	43	50
40-44	47	41	37	51	28
45-49	33	29	38	29	35
50-54	27	25	32	30	18
55-59	17	15	23	19	16
60-64	13	5	5	12	6
65-69	6	1	3	2	3
70 +	0	1	4	1	4
Missing Data	0	1	0	0	1
Total Drivers	313	305	314	310	282

¹ Values are based upon the year of the arrest.

Table 23: Driver First DWI Convictions by Age Group in Sandoval County, 2012-2016

Age Groups	Driver First DWI Convictions ¹				
	2012	2013	2014	2015	2016
15-19	19	16	8	10	22
20-24	61	90	79	73	84
25-29	46	70	64	61	59
30-34	44	43	46	48	55
35-39	29	48	32	26	34
40-44	30	37	29	27	21
45-49	16	26	18	16	17
50-54	23	21	16	10	11
55-59	10	11	13	9	6
60-64	7	8	5	3	7
65-69	0	5	4	2	9
70 +	0	1	1	1	3
Missing Data	0	1	4	1	2
Total Drivers	285	377	319	287	330

¹ Values are based upon the year of the conviction.

Table 24: Driver Repeat DWI Convictions by Age Group in Sandoval County, 2012-2016

Age Groups	Driver Repeat DWI Convictions ¹				
	2012	2013	2014	2015	2016
15-19	3	0	0	0	0
20-24	11	18	14	8	6
25-29	29	41	30	24	24
30-34	20	27	37	20	18
35-39	18	21	20	29	21
40-44	19	26	20	22	23
45-49	16	20	18	21	21
50-54	9	13	21	20	13
55-59	5	11	14	11	11
60-64	3	8	3	3	6
65-69	4	2	0	3	0
70 +	0	0	2	0	1
Missing Data	0	1	0	0	1
Total Drivers	137	188	179	161	145

¹ Values are based upon the year of the conviction.

Table 25: Court Disposition of DWI Arrests for Sandoval County and the State, 2016

Court Disposition of DWI Arrest ¹	Sandoval County	Statewide	Percent of Statewide
Total DWI Arrests	710	10,344	6.9%
DWI Arrests Resulting in Convictions	447	5,541	8.1%
DWI Arrests Resulting in Dismissals ²	127	1,512	8.4%
DWI Arrests Awaiting Disposition	136	3,291	4.1%

¹ These are the number of DWI arrests in 2016 and whether the case resulted in a conviction or dismissal, or is still awaiting court disposition, as reported in the NM MVD Citation Tracking System (CTS) as of December 2017.

² For this table, a very small number of "not guilty" rulings may be included in the category Dismissals.

Table 26: Average Number of Days from Date of DWI Arrest to Date of Court Disposition in Sandoval County and the State, 2016

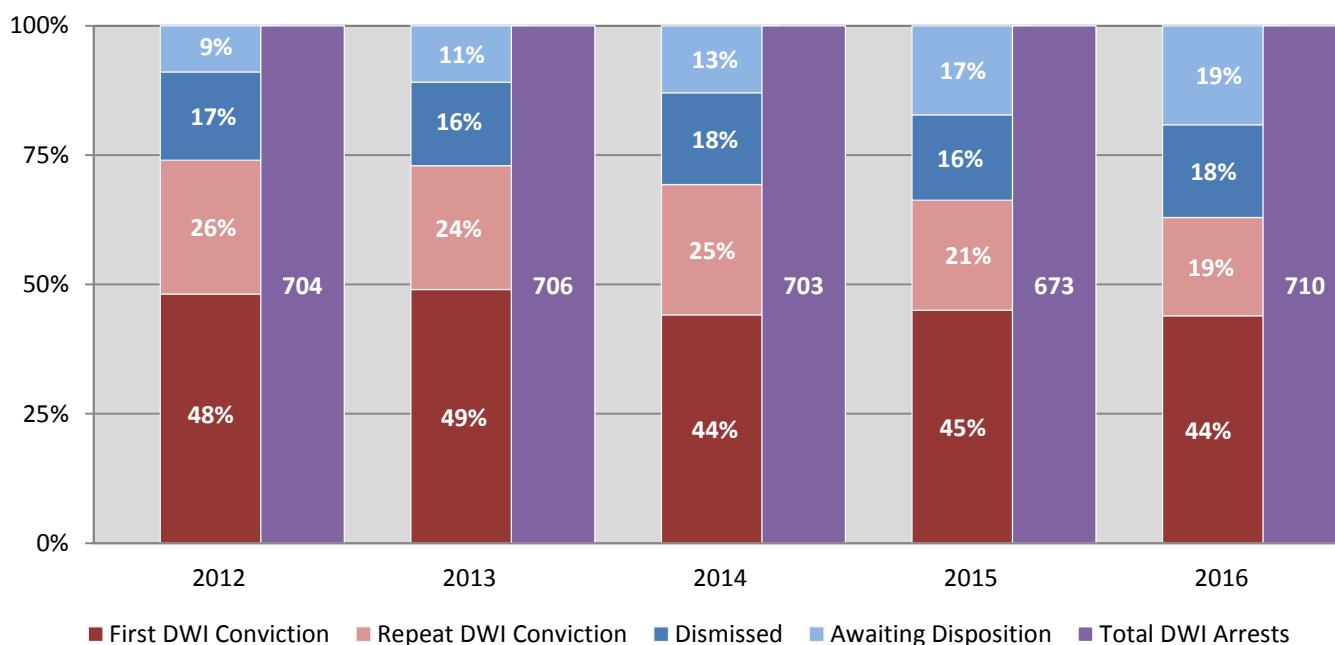
Court Disposition	Average Number of Days		Deviation from Statewide Average
	Sandoval County	Statewide	
DWI Conviction	157	157	0
DWI Dismissal	182	179	3

Table 27: Court Disposition of DWI Arrests in Sandoval County, 2012-2016

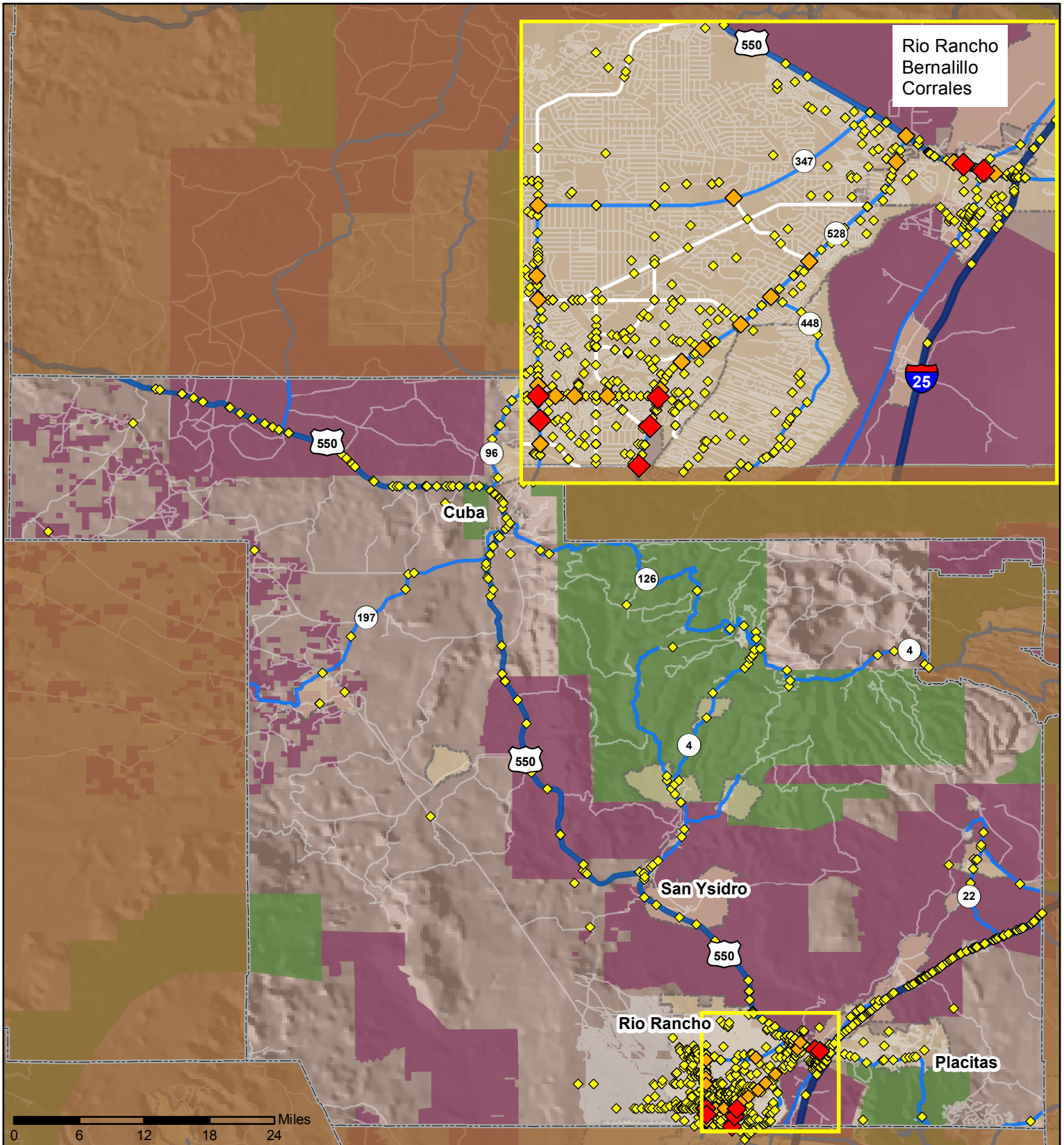
Year of DWI Arrest ¹	Court Disposition				Total DWI Arrests
	First DWI Conviction	Repeat DWI Conviction	Dismissed	Awaiting Disposition	
2012	339	182	120	63	704
2013	346	169	114	77	706
2014	310	177	125	91	703
2015	303	143	111	116	673
2016	312	135	127	136	710

¹ Values are based upon the year of the arrest.

Figure 14: Court Dispositions by Percentage of DWI Arrests in Sandoval County, 2012-2016



*Table 27 contains the values used to calculate percentages shown in Figure 14.



Legend



- Forest & Wildlife Areas
- Reservations & Pueblos
- County Boundaries
- City Boundaries
- Interstate Highways
- U.S. Highways
- State Highways
- Streets & Roadways

Crashes 2016

- 1 - 10 Crashes
- 11 - 27 Crashes
- 28 - 53 Crashes

Data Source: NMDOT Crash File 2016
<http://tru.unm.edu> CO#5801 tru@unm.edu