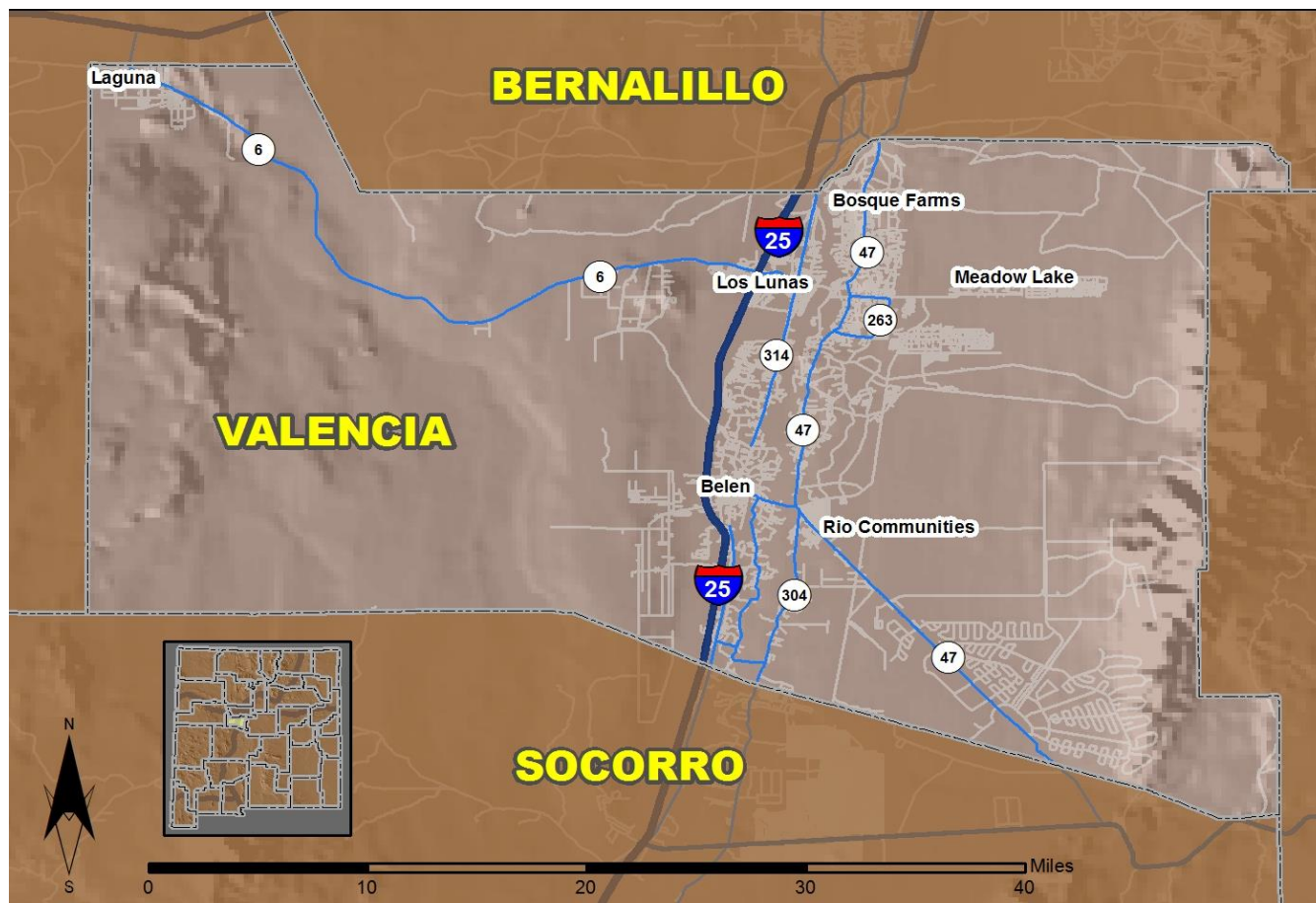


# 2016 Community Report

## Valencia County



Produced for the New Mexico Department of Transportation,  
Traffic Safety Division, Traffic Records Bureau,  
Under Contract 5801 by the University of New Mexico,  
Geospatial and Population Studies, Traffic Research Unit

Distributed in compliance with New Mexico Statute 66-7-214  
as a reference source regarding New Mexico traffic crashes

For the purposes of this report, data are compiled by the University of New Mexico, Geospatial and Population Studies, Traffic Research Unit (TRU), on behalf of the New Mexico Department of Transportation (NMDOT). Data in this report may differ from that in other data sources, such as the Federal Fatality Analysis Reporting System (FARS), due to the timing of publications and rules for how data are compiled and maintained in Federal vs. State databases. If you have questions regarding this report, please contact the Traffic Safety Division at 505-827-0427.

<http://tru.unm.edu/Crash-Reports/Community-Reports/>

## Definitions

---

**Aggravated DWI** – A driver arrested for 1) driving with a BAC of 0.16 or higher, 2) driving under the influence of alcohol or drugs and causing bodily injury to a human being as a result, or 3) driving under the influence of alcohol or drugs and refusing to submit to a BAC test at the time of arrest for DWI.

**Alcohol-involved Crash** – A crash for which the Uniform Crash Report indicated that 1) a DWI citation was issued, 2) alcohol was a contributing factor, or 3) a person in control of a vehicle (including a pedestrian or pedalcyclist) was suspected of being under the influence of alcohol.

**Alcohol-involved Driver** – A person in control of a vehicle who was cited for DWI or indicated on the Uniform Crash Report as being either suspected or determined by testing to be under the influence of alcohol. There can be multiple alcohol-involved drivers in a single alcohol-involved crash.

**Crash** – A reported incident on a public roadway involving one or more motor vehicles that resulted in death, personal injury, or at least \$500 in property damage. Crashes on private property (such as a parking lot) are not included.

**DWI Arrest (Citation)** – In this report, a DWI arrest (a.k.a. a DWI citation) is a driver arrested for either DWI or aggravated DWI. New Mexico’s legal limit for presumption of driving while intoxicated (DWI) is 0.08 for non-commercial drivers older than 21 years of age, 0.04 for commercial vehicle drivers, and 0.02 for drivers younger than 21 years of age.

**DWI Conviction** – A driver convicted of driving under the intoxicating influence of alcohol, narcotics, or pathogenic drugs, including aggravated DWI.

**Fatal Crash** – A crash in which at least one person was killed. More than one person can be killed in a single fatal crash.

**Fatalities** – The number of people killed in a crash. The terms “killed” and “deaths” are synonymous with “fatalities.” A fatality is crash-related if it occurs at the time of the crash or if the person(s) involved in the crash dies within 30 days.

**Injury Crash** – A reported crash in which at least one person was injured. Injury crashes involve at least one suspected serious injury (Class A), suspected minor injury (Class B), or possible injury (Class C). Fatal crashes are not included.

**Missing Data** – An indication that the applicable field on the UCR form was left blank or contained an invalid code. Starting with crashes that occurred in 2012, improvements in the identification of missing data in the NMDOT crash database led to an increase in the reported amount of missing data.

**Pedalcyclist** – A person riding a mechanism of transport that is powered solely by pedals (a.k.a. bicyclist).

**Pedestrian** – A person on foot, walking, running, jogging, hiking, sitting or lying down who is involved in a motor vehicle traffic crash.

## Sources

---

**Crash Data** – New Mexico Department of Transportation, Traffic Safety Division, Traffic Records Bureau, Traffic Crash Database, as of the report date below. Crash data are compiled using NMDOT Uniform Crash Reports (UCR), submitted by law enforcement agencies in the state, for any incident on a public roadway involving one or more motor vehicles that resulted in death, injury, or at least \$500 in property damage. These reports are processed by the NMDOT Traffic Records Bureau and analyzed by the University of New Mexico, Geospatial and Population Studies, Traffic Research Unit (TRU).

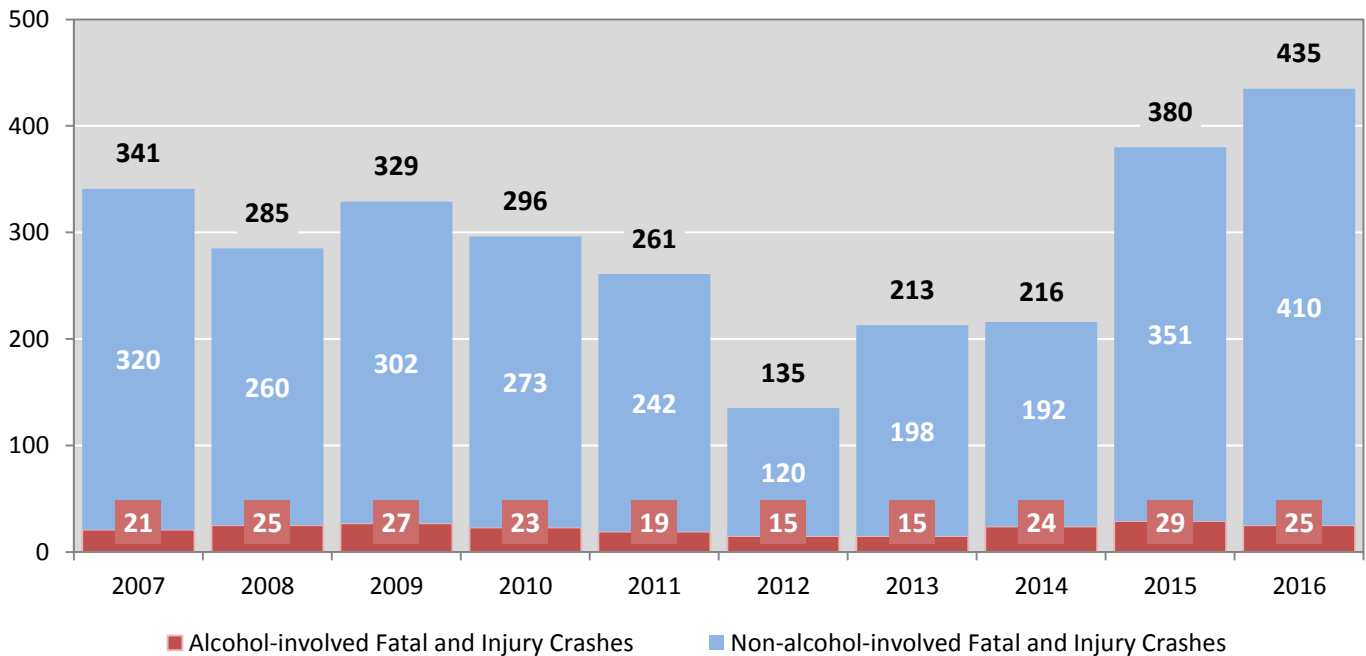
**DWI Citation Tracking System (CTS)** – New Mexico Taxation and Revenue Department (NM TRD), Motor Vehicle Division (MVD), DWI Citation Tracking System (CTS), as of December 2017. Repeat offenders are identified by the combination of account key, arrest date, and citation number. County data are based upon the county where the arrest took place. City data are based upon the city where the offender resides.

**Urban Areas** – New Mexico Department of Transportation, Asset Management and Planning, 2010 U.S. Census Urbanized Area Boundaries, NMDOT-Adjusted, and U.S. Census Urban Clusters, August 21, 2013. In crashes before 2013, “urban” was defined as a town or city with a population of at least 2,500 people.

**Table 1: Total Crashes and Alcohol-involved Crashes by Crash Severity in Valencia County, 2007-2016**

Year	Total Crashes				Alcohol-involved Crashes			
	Fatal	Injury	Property Damage Only	Total	Fatal	Injury	Property Damage Only	Total
2007	12	329	760	<b>1,101</b>	5	16	30	<b>51</b>
2008	9	276	565	<b>850</b>	6	19	26	<b>51</b>
2009	5	324	786	<b>1,115</b>	3	24	41	<b>68</b>
2010	11	285	623	<b>919</b>	4	19	17	<b>40</b>
2011	10	251	603	<b>864</b>	2	17	29	<b>48</b>
2012	10	125	225	<b>360</b>	4	11	8	<b>23</b>
2013	2	211	435	<b>648</b>	1	14	8	<b>23</b>
2014	10	206	448	<b>664</b>	7	17	10	<b>34</b>
2015	5	375	742	<b>1,122</b>	3	26	29	<b>58</b>
2016	7	428	736	<b>1,171</b>	0	25	31	<b>56</b>

**Figure 1: Alcohol-involved Fatal and Injury Crashes Compared with Non-alcohol-involved Fatal and Injury Crashes in Valencia County, 2007-2016**



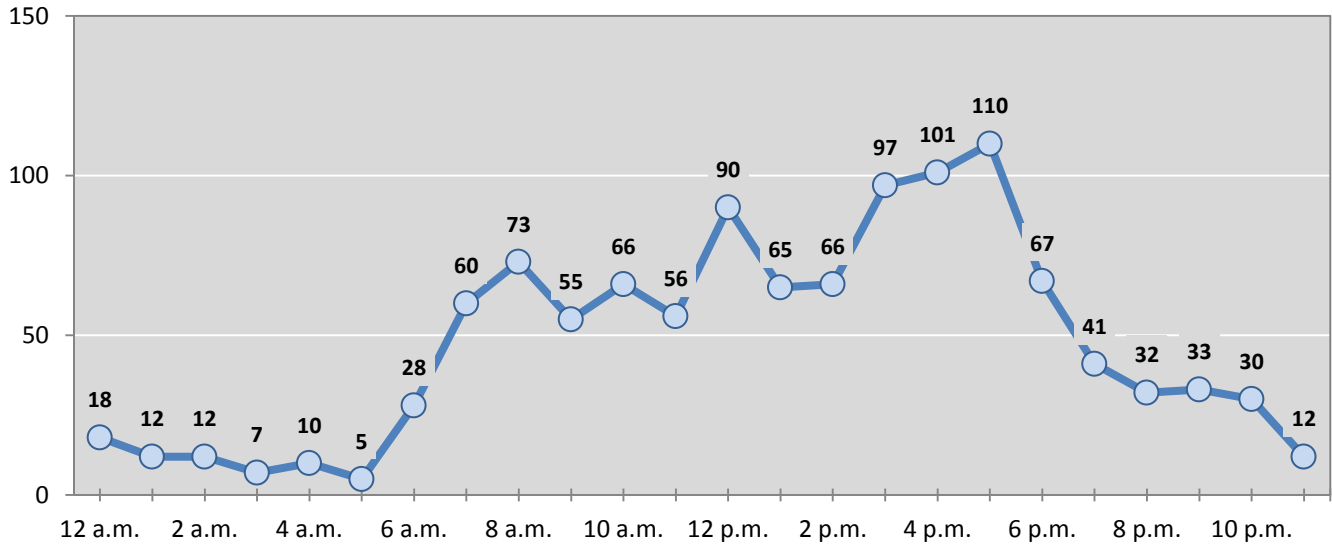
**Table 2: Crashes by Month in Valencia County, 2012-2016**

Month	Crashes					5-Year Average
	2012	2013	2014	2015	2016	
January	51	53	50	97	78	<b>66</b>
February	16	52	40	102	81	<b>58</b>
March	34	69	35	80	105	<b>65</b>
April	45	63	56	92	101	<b>71</b>
May	44	55	60	75	90	<b>65</b>
June	35	53	44	80	89	<b>60</b>
July	20	41	59	99	102	<b>64</b>
August	30	59	54	100	112	<b>71</b>
September	19	46	48	85	106	<b>61</b>
October	25	52	65	88	103	<b>67</b>
November	16	49	54	121	115	<b>71</b>
December	25	56	99	103	89	<b>74</b>
<b>Total Crashes</b>	<b>360</b>	<b>648</b>	<b>664</b>	<b>1,122</b>	<b>1,171</b>	<b>793</b>

**Table 3: Alcohol-involved Crashes by Month in Valencia County, 2012-2016**

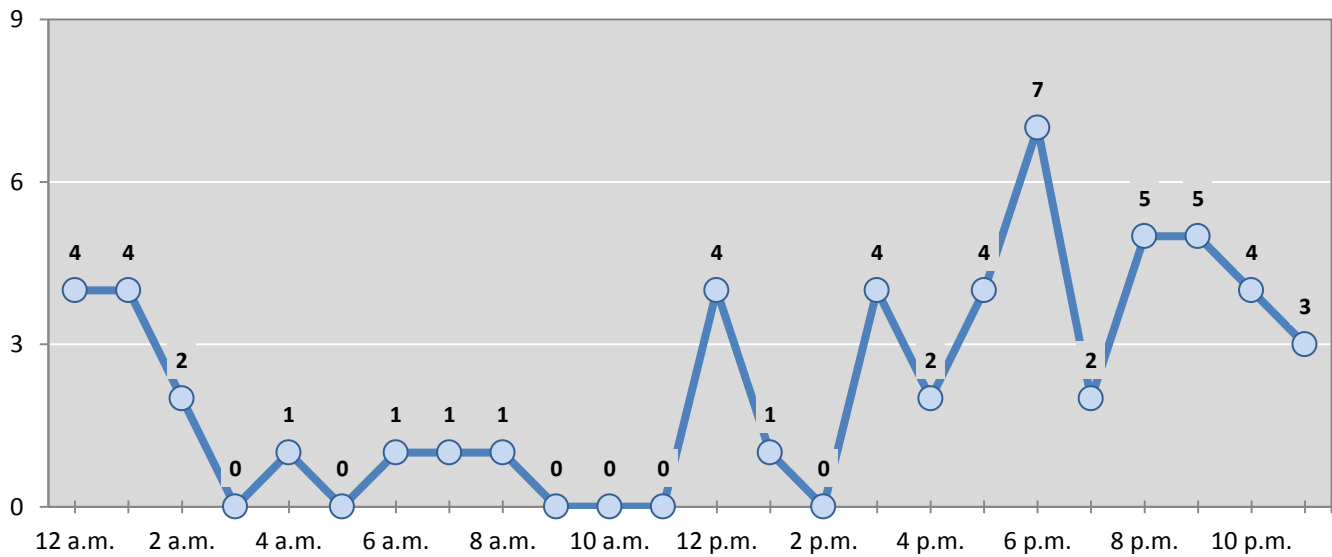
Month	Alcohol-involved Crashes					5-Year Average
	2012	2013	2014	2015	2016	
January	3	1	2	9	2	<b>3</b>
February	0	0	1	6	2	<b>2</b>
March	3	3	2	4	5	<b>3</b>
April	5	3	2	3	4	<b>3</b>
May	3	2	3	1	1	<b>2</b>
June	2	2	0	6	6	<b>3</b>
July	2	3	0	6	6	<b>3</b>
August	0	4	7	4	7	<b>4</b>
September	0	3	2	2	8	<b>3</b>
October	2	1	6	5	9	<b>5</b>
November	2	0	5	7	1	<b>3</b>
December	1	1	4	5	5	<b>3</b>
<b>Total Crashes</b>	<b>23</b>	<b>23</b>	<b>34</b>	<b>58</b>	<b>56</b>	<b>39</b>

**Figure 2: Crashes by Hour in Valencia County, 2016**



\* In 2016, Valencia County had 5 crashes for which hour data were missing.

**Figure 3: Alcohol-involved Crashes by Hour in Valencia County, 2016**



\* In 2016, Valencia County had 0 alcohol-involved crashes for which hour data were missing.

**Table 4: Alcohol-involved Crashes by Day of Week in Valencia County, 2012-2016**

Day of Week	Alcohol-involved Crashes					5-Year Average
	2012	2013	2014	2015	2016	
Sunday	1	2	2	12	14	6
Monday	2	3	3	4	8	4
Tuesday	3	2	8	5	5	5
Wednesday	1	4	3	7	4	4
Thursday	6	2	2	7	7	5
Friday	3	5	10	11	7	7
Saturday	7	5	6	12	11	8
<b>Total Crashes</b>	<b>23</b>	<b>23</b>	<b>34</b>	<b>58</b>	<b>56</b>	<b>39</b>

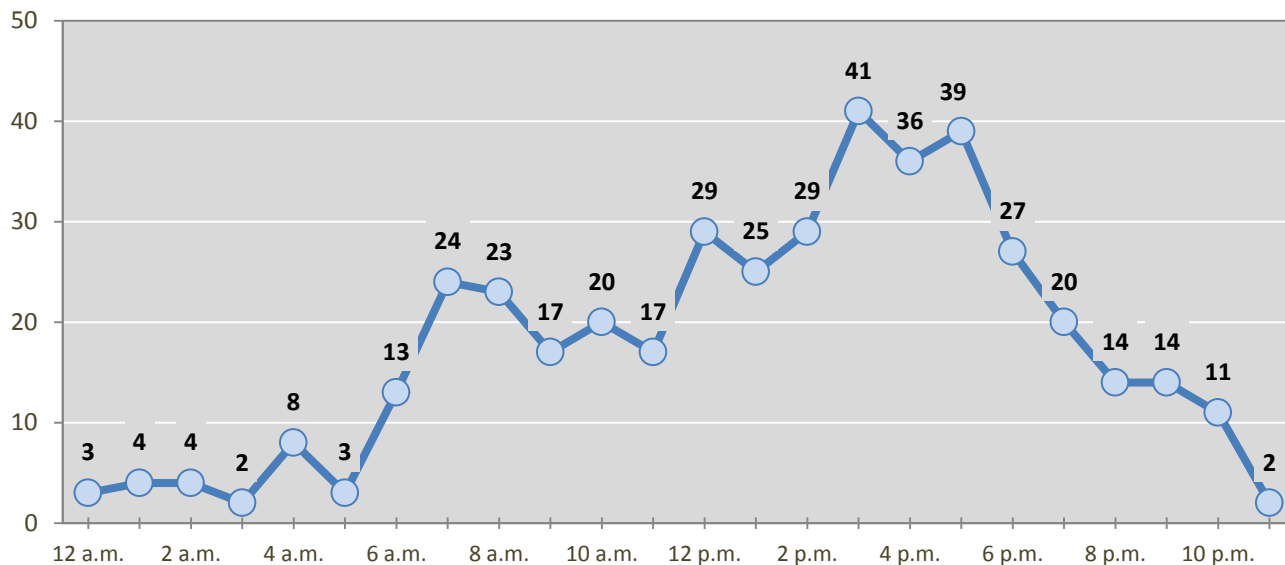
**Table 5: Fatal and Injury Crashes by Day of Week in Valencia County, 2012-2016**

Day of Week	Fatal and Injury Crashes					5-Year Average
	2012	2013	2014	2015	2016	
Sunday	12	11	26	37	48	27
Monday	25	36	24	68	72	45
Tuesday	12	33	29	56	59	38
Wednesday	14	36	34	56	61	40
Thursday	20	23	30	61	75	42
Friday	26	43	39	51	72	46
Saturday	26	31	34	51	48	38
<b>Total Crashes</b>	<b>135</b>	<b>213</b>	<b>216</b>	<b>380</b>	<b>435</b>	<b>276</b>

**Table 6: Pedestrian and Pedalcyclist Crashes by Day of Week in Valencia County, 2012-2016**

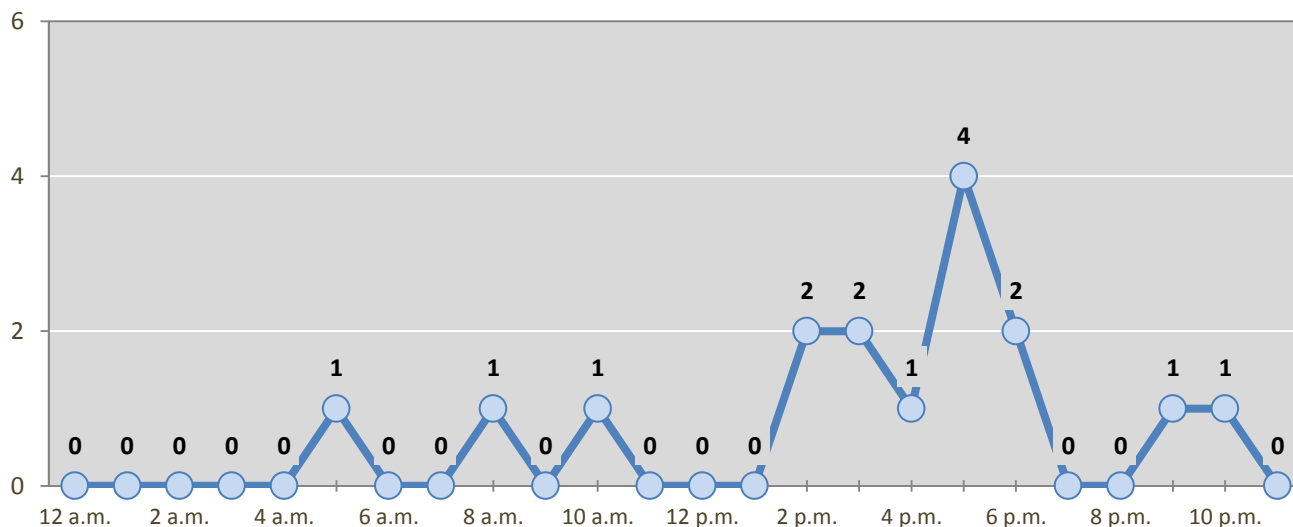
Day of Week	Pedestrian and Pedalcyclist Crashes					5-Year Average
	2012	2013	2014	2015	2016	
Sunday	0	0	0	4	1	1
Monday	1	3	3	2	1	2
Tuesday	0	1	2	1	3	1
Wednesday	1	2	3	1	2	2
Thursday	1	1	2	3	2	2
Friday	0	2	2	0	5	2
Saturday	1	1	2	3	2	2
<b>Total Crashes</b>	<b>4</b>	<b>10</b>	<b>14</b>	<b>14</b>	<b>16</b>	<b>12</b>

**Figure 4: Fatal and Injury Crashes by Hour in Valencia County, 2016**



\* In 2016, Valencia County had 10 crashes for which hour data were missing.

**Figure 5: Pedestrian and Pedalcyclist Crashes by Hour in Valencia County, 2016**



\* In 2016, Valencia County had 0 crashes for which hour data were missing.

**Table 7: Severity of Injuries to People in Crashes by Rural and Urban Location in Valencia County, 2016**

Urban and Rural Locations by Alcohol-involvement	People in Crashes by Severity of Injuries					Total People
	Fatalities (Class K)	Suspected Serious Injuries (Class A)	Suspected Minor Injuries (Class B)	Possible Injuries (Class C)	No Apparent Injuries (Class O)	
<b>People in Alcohol-involved Crashes</b>	<b>0</b>	<b>4</b>	<b>17</b>	<b>15</b>	<b>103</b>	<b>139</b>
Urban	0	2	17	13	99	131
Rural Non-Interstate	0	2	0	2	4	8
Rural Interstate	0	0	0	0	0	0
<b>People in Crashes</b>	<b>7</b>	<b>34</b>	<b>149</b>	<b>435</b>	<b>2,469</b>	<b>3,094</b>
Urban	7	30	134	417	2,390	2,978
Rural Non-Interstate	0	3	13	14	76	106
Rural Interstate	0	1	2	4	3	10
<b>Percent in Alcohol-involved Crashes</b>	<b>0%</b>	<b>12%</b>	<b>11%</b>	<b>3%</b>	<b>4%</b>	<b>4%</b>

**Table 8: Total Crashes by Roadway System and Crash Severity in Valencia County, 2012-2016**

Crash Severity by System	Crashes by Year					5-Year Average
	2012	2013	2014	2015	2016	
<b>Total Rural Interstate</b>	<b>10</b>	<b>2</b>	<b>1</b>	<b>7</b>	<b>6</b>	<b>5</b>
Fatal Crash	1	0	0	0	0	0
Injury Crash	5	0	0	2	5	2
Property Damage Only Crash	4	2	1	5	1	3
<b>Total Rural Non-Interstate</b>	<b>92</b>	<b>21</b>	<b>14</b>	<b>67</b>	<b>53</b>	<b>50</b>
Fatal Crash	6	2	2	1	0	2
Injury Crash	45	4	4	23	22	20
Property Damage Only Crash	41	15	8	43	31	28
<b>Total Urban</b>	<b>258</b>	<b>625</b>	<b>649</b>	<b>1,048</b>	<b>1,112</b>	<b>738</b>
Fatal Crash	3	0	8	4	7	4
Injury Crash	75	207	202	350	401	247
Property Damage Only Crash	180	418	439	694	704	487



**Table 9: Total Crashes by Crash Classification in Valencia County, 2012-2016**

Crash Classification	Total Crashes by Year					5-Year Average
	2012	2013	2014	2015	2016	
Animal	35	30	19	24	19	25
Fixed Object	103	45	40	36	37	52
Other (Non-Collision)	11	2	6	2	3	5
Other (Object)	21	11	4	12	4	10
Other Vehicle	312	240	217	240	287	259
Overturn/Rollover	55	17	18	2	12	21
Parked Vehicle	18	9	13	13	6	12
Pedalcyclist	3	3	4	8	4	4
Pedestrian	3	4	4	4	6	4
Railroad Train	0	0	0	0	0	0
Rollover	0	0	0	11	5	3
Vehicle on Other Road	7	3	0	5	1	3
Missing Data	7	8	2	0	1	4
<b>Total Crashes</b>	<b>575</b>	<b>372</b>	<b>327</b>	<b>357</b>	<b>385</b>	<b>403</b>

**Table 10: Vehicles in Crashes by Vehicle Type in Valencia County, 2012-2016**

Vehicle Type <sup>1</sup>	Vehicles in Crashes by Vehicle Type					5-Year Average
	2012	2013	2014	2015	2016	
Bus	6	4	3	6	10	6
Motorcycle	20	30	32	23	28	27
Passenger	317	573	602	995	1,010	699
Pedalcyclist	3	7	7	5	6	6
Pedestrian	1	3	8	9	12	7
Pickup	154	284	292	482	554	353
Semi	21	25	23	40	43	30
Van/SUV/4WD	96	211	220	343	415	257
Other Vehicle	16	68	12	66	32	39
Missing Data	20	24	44	74	65	45
<b>Total Vehicles</b>	<b>654</b>	<b>1,229</b>	<b>1,243</b>	<b>2,043</b>	<b>2,175</b>	<b>1,469</b>

<sup>1</sup> Pedestrians and pedalcyclists are counted as non-motorized vehicles, when involved in a crash with a motor vehicle. See Page 17 for data on drivers of non-motorized vehicles in crashes (i.e. pedestrians and pedalcyclists).

**Table 11: Motor Vehicle Drivers in Crashes by Vehicle Type and Age Group in Valencia County, 2016**

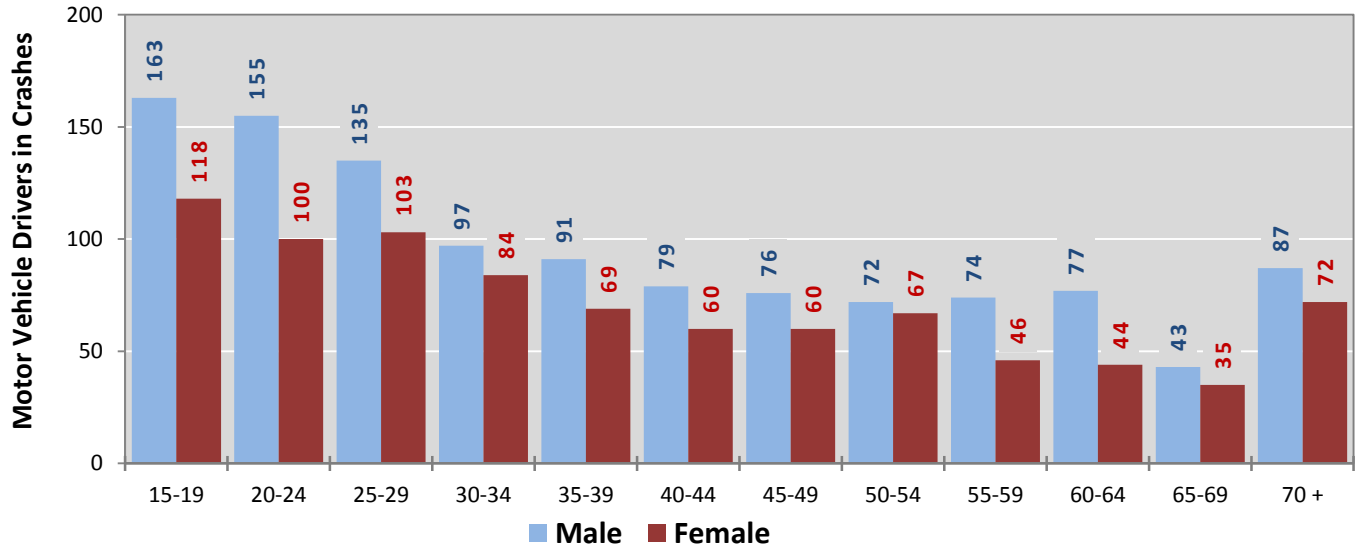
Age Groups	Motor Vehicle <sup>1</sup> Drivers by Vehicle Type and Age Group								Total Drivers
	Bus	Motor-cycle	Passenger	Pickup	Semi	Van 4WD SUV	Other Vehicle	Missing Data	
15-19	0	6	154	56	0	51	9	5	281
20-24	0	4	152	56	5	31	3	4	255
25-29	1	4	123	53	6	49	1	1	238
30-34	0	1	83	39	6	47	3	3	182
35-39	0	2	71	39	3	40	2	3	160
40-44	0	1	61	45	3	27	1	1	139
45-49	2	0	57	42	4	27	3	1	136
50-54	2	3	63	41	3	26	0	1	139
55-59	2	2	42	42	5	25	2	0	120
60-64	1	3	46	37	3	29	2	0	121
65-69	1	1	30	29	2	13	2	0	78
70 +	1	0	78	40	1	38	1	0	159
Missing Data	0	1	50	35	2	12	3	46	149
<b>Total Drivers</b>	<b>10</b>	<b>28</b>	<b>1,010</b>	<b>554</b>	<b>43</b>	<b>415</b>	<b>32</b>	<b>65</b>	<b>2,157</b>

**Table 12: Alcohol-involved Motor Vehicle Drivers in Crashes by Vehicle Type and Age Group in Valencia County, 2016**

Age Groups	Alcohol-involved Motor Vehicle <sup>1</sup> Drivers by Vehicle Type and Age Group								Total Drivers
	Bus	Motor-cycle	Passenger	Pickup	Semi	Van 4WD SUV	Other Vehicle	Missing Data	
15-19	0	0	1	1	0	0	0	0	2
20-24	0	0	6	1	0	2	0	0	9
25-29	0	0	10	3	0	2	0	0	15
30-34	0	1	4	1	0	0	0	0	6
35-39	0	0	1	2	0	0	0	0	3
40-44	0	0	1	4	0	1	0	0	6
45-49	0	0	1	2	0	0	0	0	3
50-54	0	0	1	2	0	0	0	0	3
55-59	0	0	0	1	0	0	0	0	1
60-64	0	2	1	0	0	0	0	0	3
65-69	0	0	0	0	0	0	0	0	0
70 +	0	0	0	1	0	1	0	0	2
Missing Data	0	0	0	1	0	2	0	0	3
<b>Total Drivers</b>	<b>0</b>	<b>3</b>	<b>26</b>	<b>19</b>	<b>0</b>	<b>8</b>	<b>0</b>	<b>0</b>	<b>56</b>

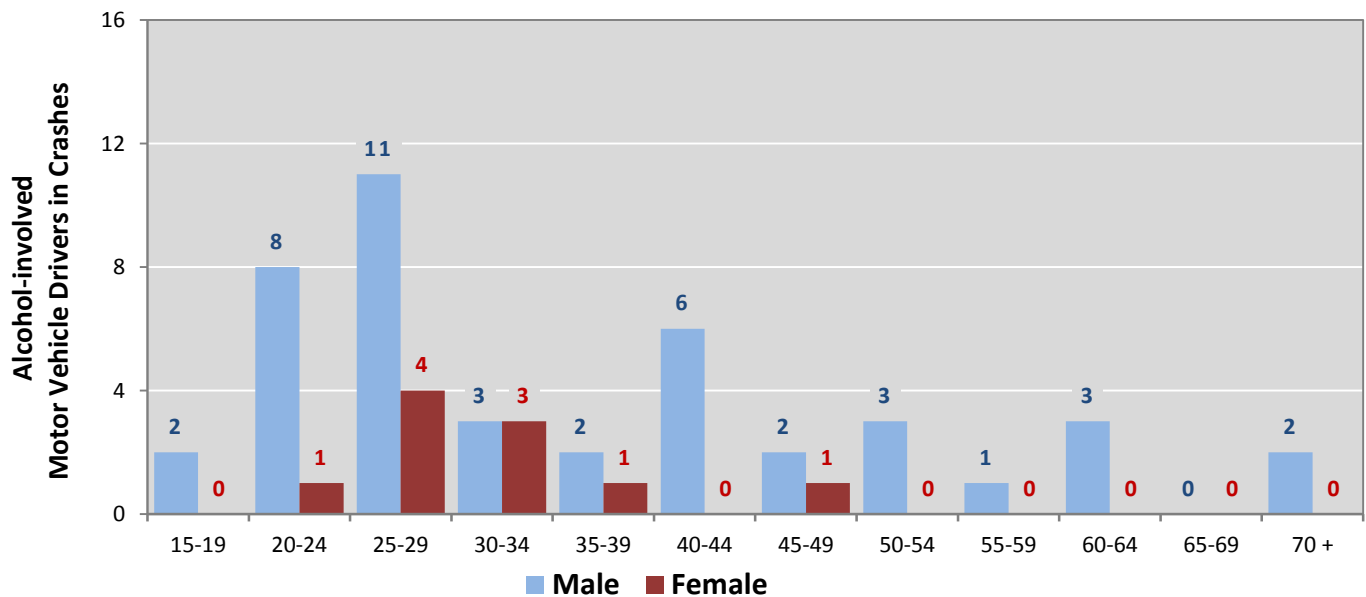
<sup>1</sup> See Page 17 for data on drivers of non-motorized vehicles in crashes (i.e. pedestrians and pedalcyclists).

**Figure 6: Motor Vehicle Drivers in Crashes by Age Group and Sex in Valencia County, 2016**



\* In 2016, Valencia County had 150 drivers in crashes for which age or sex data were missing.

**Figure 7: Alcohol-involved Motor Vehicle Drivers in Crashes by Age Group and Sex in Valencia County, 2016**



\* In 2016, Valencia County had 3 drivers in crashes for which age or sex data were missing.

**Table 13: Alcohol-involved Motor Vehicle Drivers Under 21 (Ages 15-20) in Crashes in Valencia County, 2012-2016**

Age <sup>1</sup>	Year					5-Year Total
	2012	2013	2014	2015	2016	
15	0	0	0	0	0	0
16	1	0	0	1	0	2
17	3	0	1	0	0	4
18	0	1	0	1	0	2
19	1	0	0	0	0	1
20	1	0	0	0	0	1
<b>Total Drivers</b>	<b>6</b>	<b>1</b>	<b>1</b>	<b>2</b>	<b>0</b>	<b>10</b>

**Table 14: Motor Vehicle Drivers Under 21 (Ages 15-20) in Crashes by Age, Sex and Alcohol-involvement in Valencia County, 2016**

Age <sup>1</sup>	Total Drivers				Alcohol-involved Drivers			
	Sex		Total Drivers	Percent of Total	Sex		Total Drivers	Percent of Total
	Male	Female			Male	Female		
15	4	1	5	7%	0	0	0	0%
16	9	4	13	17%	0	0	0	0%
17	8	3	11	14%	0	0	0	0%
18	12	9	21	28%	0	0	0	0%
19	6	9	15	20%	0	0	0	0%
20	7	4	11	14%	0	0	0	0%
<b>Total Drivers</b>	<b>46</b>	<b>30</b>	<b>76</b>	<b>100%</b>	<b>0</b>	<b>0</b>	<b>0</b>	<b>0%</b>

<sup>1</sup> For analysis of drivers under age 21, when the driver age or sex are not identified on the crash report (typically hit-and-run drivers), the driver data are considered unreliable and are excluded from the analysis.

**Table 15: Frequency of Contributing Factors in Crashes  
by Crash Severity in Valencia County, 2016**

Contributing Factors	Frequency of Contributing Factor <sup>1</sup> by Crash Severity			
	Frequency in Fatal Crashes	Frequency in Injury Crashes	Frequency in Property Damage Only Crashes	Frequency in All Crashes
<b>Human</b>	<b>12</b>	<b>629</b>	<b>935</b>	<b>1,576</b>
Driver Inattention	2	209	285	496
Failed to Yield Right of Way	0	86	127	213
Following Too Closely	0	53	111	164
Other Improper Driving	1	55	68	124
Excessive Speed	2	58	53	113
Speed Too Fast for Conditions	2	27	33	62
Alcohol Involved	0	25	31	56
Avoid No Contact - Vehicle	0	16	37	53
Drove Left Of Center	1	23	23	47
Disregarded Traffic Signal	0	20	25	45
Improper Overtaking	1	10	33	44
Made Improper Turn	0	10	30	40
Improper Lane Change	1	4	22	27
Improper Backing	0	4	22	26
Avoid No Contact - Other	0	2	13	15
Passed Stop Sign	0	5	6	11
Drug Involved	2	4	3	9
Cell Phone	0	4	4	8
Failed to Yield to Police Vehicle	0	5	2	7
High Speed Pursuit	0	4	2	6
Pedestrian Error	0	4	0	4
Texting	0	0	2	2
Vehicle Skidded Before Brake	0	0	2	2
Driverless Moving Vehicle	0	1	0	1
Failed to Yield to Emergency Vehicle	0	0	1	1
<b>Vehicle</b>	<b>0</b>	<b>15</b>	<b>31</b>	<b>46</b>
Inadequate Brakes	0	6	14	20
Other Mechanical Defect	0	6	13	19
Defective Tires	0	3	4	7
Defective Steering	0	0	0	0
<b>Environment</b>	<b>0</b>	<b>2</b>	<b>3</b>	<b>5</b>
Traffic Control Not Functioning	0	1	2	3
Low Visibility Due to Smoke	0	0	1	1
Road Defect	0	1	0	1
<b>Other</b>	<b>1</b>	<b>352</b>	<b>570</b>	<b>923</b>
None	0	270	427	697
Other - No Driver Error	1	82	143	226

<sup>1</sup> Multiple contributing factors may be reported for any vehicle in a crash.

**Table 16: People in Crashes by Crash Classification and Severity of Injuries in Valencia County, 2016**

Crash Classification	People in Crashes by Severity of Injuries					Total People
	Fatalities (Class K)	Suspected Serious Injuries (Class A)	Suspected Minor Injuries (Class B)	Possible Injuries (Class C)	No Apparent Injuries (Class O)	
Animal	0	0	1	3	13	17
Fixed Object	1	4	20	21	136	182
Other (Non-Collision)	0	1	6	4	28	39
Other (Object)	0	0	0	0	24	24
Other Vehicle	1	19	81	375	2,147	2,623
Overturn/Rollover	2	2	28	20	39	91
Parked Vehicle	0	0	0	2	45	47
Pedalcyclist	1	0	4	1	7	13
Pedestrian	1	1	6	4	11	23
Railroad Train	0	1	0	0	0	1
Rollover	1	6	3	5	2	17
Vehicle on Other Road	0	0	0	0	4	4
Missing Data	0	0	0	0	13	13
<b>Total People</b>	<b>7</b>	<b>34</b>	<b>149</b>	<b>435</b>	<b>2,469</b>	<b>3,094</b>

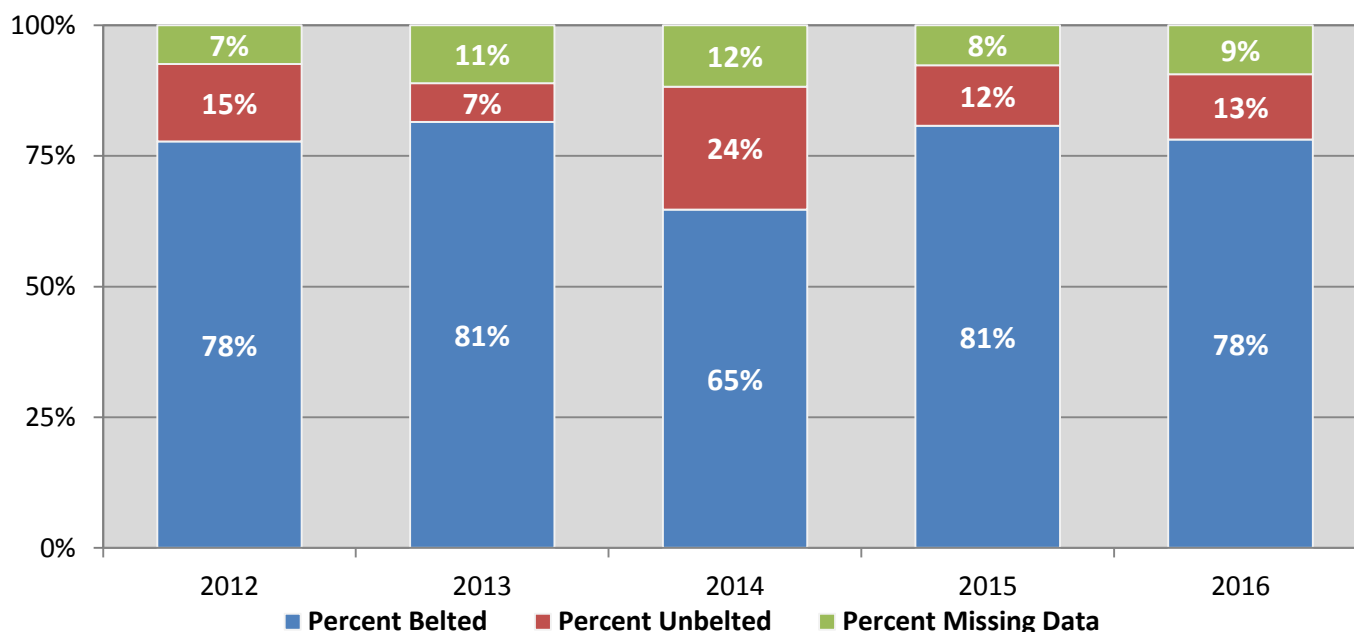
**Table 17: Killed or Injured Unbelted People in Crashes by Sex and Age Group in Valencia County, 2016**

Age Groups	Unbelted People Killed or Injured <sup>1,2</sup>				Total People
	Male	Percent of Male	Female	Percent of Female	
0-4	0	0%	0	0%	0
5-9	0	0%	0	0%	0
10-14	1	6%	0	0%	1
15-19	1	6%	3	27%	4
20-24	2	13%	2	18%	4
25-29	2	13%	2	18%	4
30-34	5	31%	0	0%	5
35-39	1	6%	2	18%	3
40-44	0	0%	0	0%	0
45-49	2	13%	0	0%	2
50-54	0	0%	1	9%	1
55-59	1	6%	0	0%	1
60-64	1	6%	1	9%	2
65-69	0	0%	0	0%	0
70 +	0	0%	0	0%	0
Missing Data	0	0%	0	0%	0
<b>Total People</b>	<b>16</b>	<b>100%</b>	<b>11</b>	<b>100%</b>	<b>27</b>

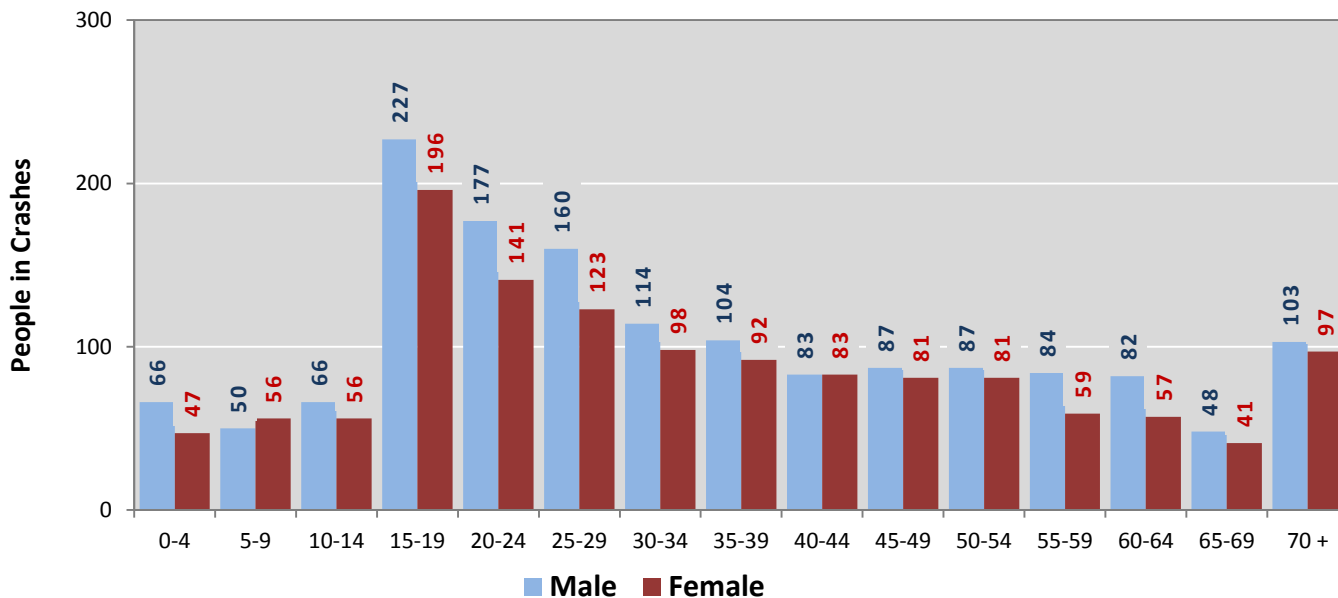
<sup>1</sup> People injured are in one of three categories: suspected serious injury, suspected minor injury, or possible injury.

<sup>2</sup> Excludes people in or on buses, heavy trucks, motorcycles, or ATVs.

**Figure 8: Seatbelt Use by People in Crashes with Fatal or Suspected Serious Injuries in Valencia County, 2012-2016**

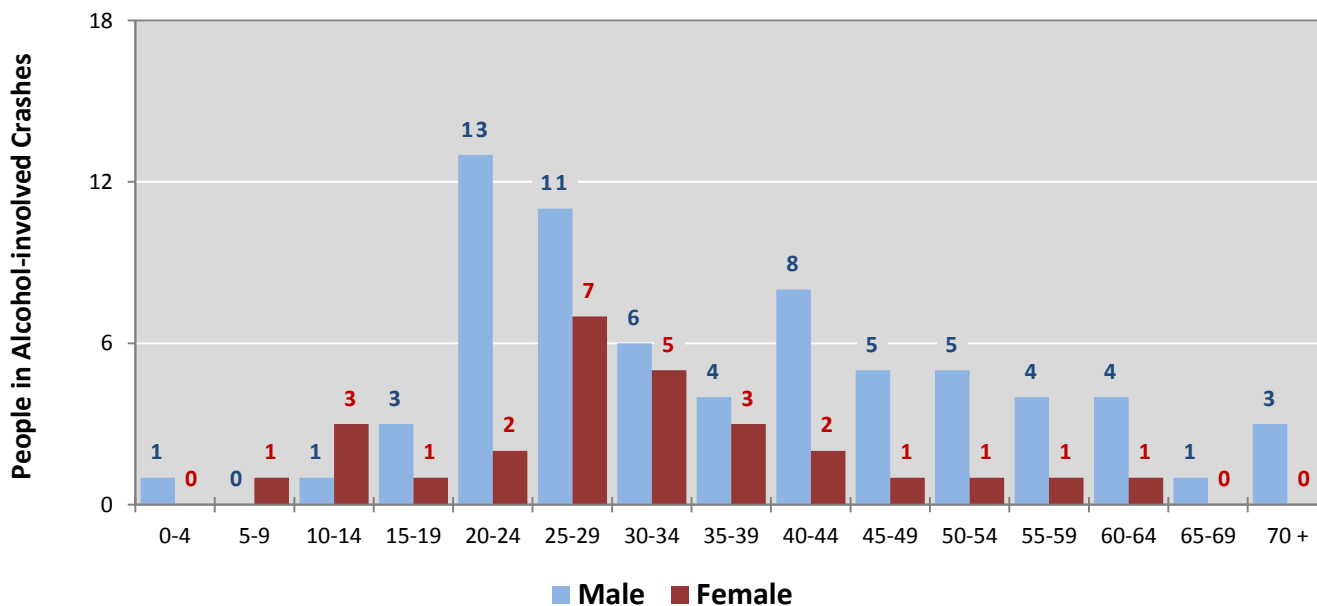


**Figure 9: People in Crashes by Age Group and Sex in Valencia County, 2016**



\* In 2016, Valencia County had 376 people in crashes for which age or sex data were missing.

**Figure 10: People in Alcohol-involved Crashes by Age Group and Sex in Valencia County, 2016**



\* In 2016, Valencia County had 42 people in alcohol-involved crashes for which age or sex data were missing.



**Table 18: Pedestrians and Pedalcyclists in Crashes by Age Group in Valencia County, 2012-2016**

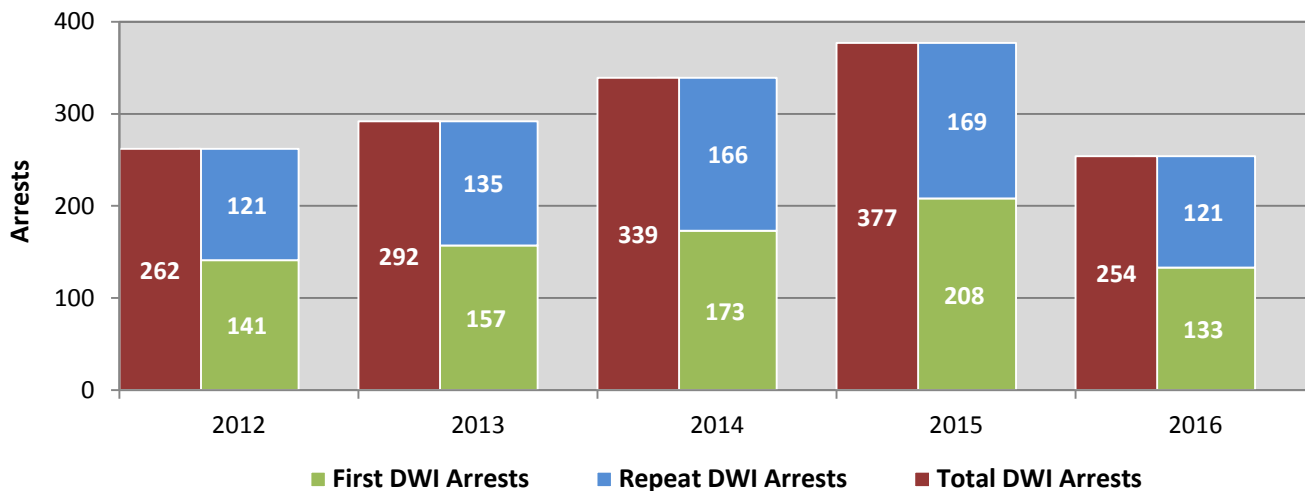
Age Groups	Pedestrians and Pedalcyclists <sup>1</sup> in Crashes					5-Year Total People
	2012	2013	2014	2015	2016	
0-4	0	0	0	0	1	1
5-9	0	1	0	0	1	2
10-14	0	1	3	1	3	8
15-19	1	0	2	1	2	6
20-24	0	0	1	1	0	2
25-29	0	1	2	1	3	7
30-34	0	0	2	1	2	5
35-39	0	2	0	3	0	5
40-44	0	0	0	1	0	1
45-49	0	0	1	0	1	2
50-54	1	2	1	1	1	6
55-59	0	0	3	2	3	8
60-64	0	1	0	0	0	1
65-69	0	1	0	0	1	2
70 +	2	1	0	0	0	3
Missing Data	0	0	0	2	0	2
<b>Total People</b>	<b>4</b>	<b>10</b>	<b>15</b>	<b>14</b>	<b>18</b>	<b>61</b>

**Table 19: Pedestrians and Pedalcyclists in Crashes by Alcohol Involvement and Severity of Injuries in Valencia County, 2016**

Alcohol Involvement	Pedestrians and Pedalcyclists <sup>1</sup> in Crashes					Total People
	Fatalities (Class K)	Suspected Serious Injuries (Class A)	Suspected Minor Injuries (Class B)	Possible Injuries (Class C)	No Apparent Injury (Class O)	
<b>Total Pedalcyclists</b>	<b>1</b>	<b>0</b>	<b>4</b>	<b>1</b>	<b>0</b>	<b>6</b>
Involved	0	0	0	0	0	0
Not Involved	1	0	4	1	0	6
<b>Total Pedestrians</b>	<b>1</b>	<b>1</b>	<b>5</b>	<b>4</b>	<b>1</b>	<b>12</b>
Involved	0	0	0	0	0	0
Not Involved	1	1	5	4	1	12
<b>Total People</b>	<b>2</b>	<b>1</b>	<b>9</b>	<b>5</b>	<b>1</b>	<b>18</b>

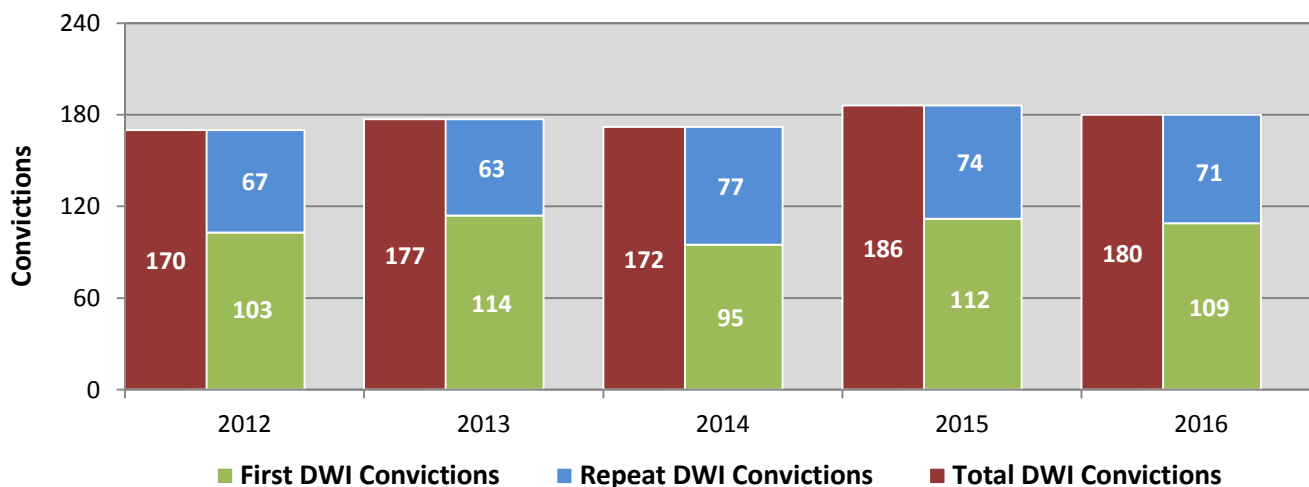
<sup>1</sup> Pedestrians and pedalcyclists are counted as non-motorized vehicles, when involved in a crash with a motor vehicle.

**Figure 11: DWI Arrests in Valencia County,  
Showing First and Repeat DWI Arrests, 2012-2016**



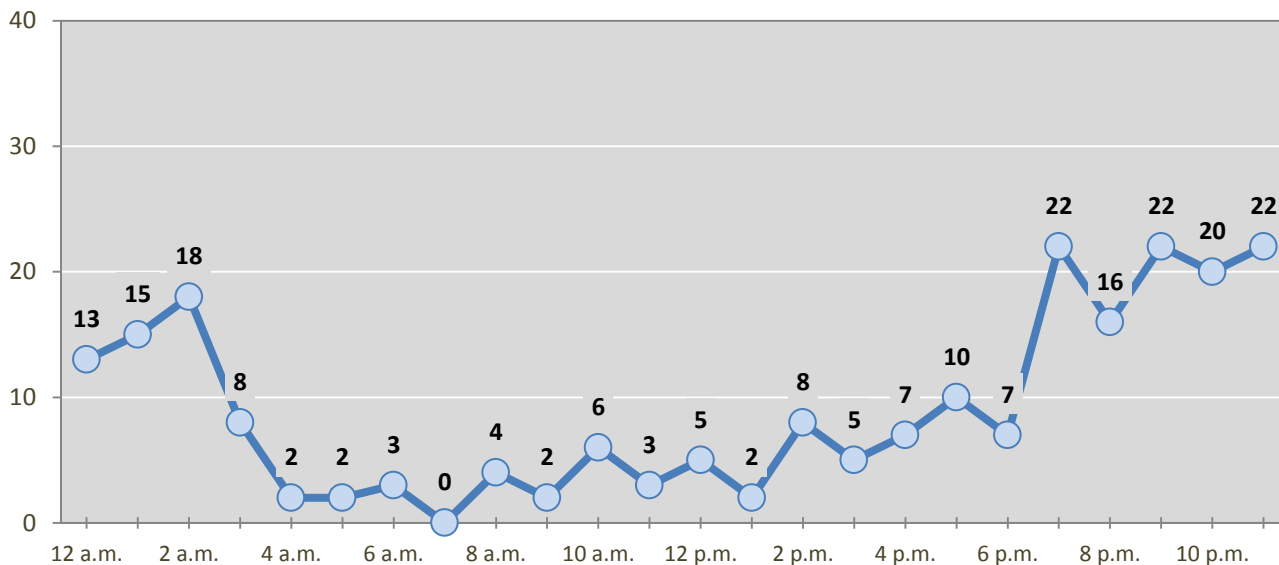
\*Values are based upon the year of the arrest.

**Figure 12: DWI Convictions in Valencia County,  
Showing First and Repeat DWI Convictions, 2012-2016**



\*Values are based upon the year of the conviction.

**Figure 13: DWI Arrests by Hour in Valencia County, 2016**



\* In 2016, Valencia County had 32 arrests for which hour data were missing.

**Table 20: DWI Arrests by Day of Week in Valencia County, 2012-2016**

Day of Week	Year					5-Year Average
	2012	2013	2014	2015	2016	
Sunday	45	47	54	81	49	55
Monday	26	20	36	22	30	27
Tuesday	17	29	36	27	15	25
Wednesday	25	35	31	39	18	30
Thursday	41	31	30	56	38	39
Friday	55	62	63	59	44	57
Saturday	53	68	89	93	60	73
<b>Total Arrests</b>	<b>262</b>	<b>292</b>	<b>339</b>	<b>377</b>	<b>254</b>	<b>305</b>

**Table 21: Driver First DWI Arrests by Age Group in Valencia County, 2012-2016**

Age Groups	Driver First DWI Arrests <sup>1</sup>				
	2012	2013	2014	2015	2016
15-19	22	8	23	20	14
20-24	38	38	35	44	33
25-29	17	32	30	37	26
30-34	15	24	25	20	20
35-39	9	16	14	20	9
40-44	11	16	11	19	6
45-49	5	7	12	11	4
50-54	14	5	4	15	7
55-59	3	4	6	9	5
60-64	5	3	6	6	3
65-69	0	4	4	2	2
70 +	2	0	1	3	2
Missing Data	0	0	2	2	2
<b>Total Drivers</b>	<b>141</b>	<b>157</b>	<b>173</b>	<b>208</b>	<b>133</b>

<sup>1</sup> Values are based upon the year of the arrest.

**Table 22: Driver Repeat DWI Arrests by Age Group in Valencia County, 2012-2016**

Age Groups	Driver Repeat DWI Arrests <sup>1</sup>				
	2012	2013	2014	2015	2016
15-19	0	1	0	1	0
20-24	13	13	11	13	8
25-29	14	19	19	21	8
30-34	18	12	35	21	16
35-39	16	17	17	17	21
40-44	16	16	18	31	22
45-49	17	17	17	17	15
50-54	14	22	15	25	16
55-59	7	8	17	15	7
60-64	4	7	9	3	3
65-69	2	2	4	4	5
70 +	0	0	2	1	0
Missing Data	0	1	2	0	0
<b>Total Drivers</b>	<b>121</b>	<b>135</b>	<b>166</b>	<b>169</b>	<b>121</b>

<sup>1</sup> Values are based upon the year of the arrest.

**Table 23: Driver First DWI Convictions by Age Group in Valencia County, 2012-2016**

Age Groups	Driver First DWI Convictions <sup>1</sup>				
	2012	2013	2014	2015	2016
15-19	11	9	4	12	2
20-24	26	34	22	20	28
25-29	12	16	16	24	24
30-34	14	16	14	9	13
35-39	10	5	13	8	10
40-44	11	6	5	9	12
45-49	5	7	5	7	5
50-54	8	11	5	9	6
55-59	4	1	6	7	4
60-64	2	4	2	5	3
65-69	0	3	3	1	1
70 +	0	2	0	0	1
Missing Data	0	0	0	1	0
<b>Total Drivers</b>	<b>103</b>	<b>114</b>	<b>95</b>	<b>112</b>	<b>109</b>

<sup>1</sup> Values are based upon the year of the conviction.

**Table 24: Driver Repeat DWI Convictions by Age Group in Valencia County, 2012-2016**

Age Groups	Driver Repeat DWI Convictions <sup>1</sup>				
	2012	2013	2014	2015	2016
15-19	0	0	0	0	1
20-24	4	4	2	0	5
25-29	10	7	12	6	9
30-34	9	12	8	11	11
35-39	10	9	10	5	9
40-44	12	7	10	16	7
45-49	11	12	9	6	5
50-54	4	7	11	14	11
55-59	4	3	6	10	8
60-64	2	2	5	4	3
65-69	1	0	3	1	2
70 +	0	0	1	1	0
Missing Data	0	0	0	0	0
<b>Total Drivers</b>	<b>67</b>	<b>63</b>	<b>77</b>	<b>74</b>	<b>71</b>

<sup>1</sup> Values are based upon the year of the conviction.

**Table 25: Court Disposition of DWI Arrests for Valencia County and the State, 2016**

Court Disposition of DWI Arrest <sup>1</sup>	Valencia County	Statewide	Percent of Statewide
Total DWI Arrests	254	10,344	<b>2.5%</b>
DWI Arrests Resulting in Convictions	126	5,541	<b>2.3%</b>
DWI Arrests Resulting in Dismissals <sup>2</sup>	49	1,512	<b>3.2%</b>
DWI Arrests Awaiting Disposition	79	3,291	<b>2.4%</b>

<sup>1</sup> These are the number of DWI arrests in 2016 and whether the case resulted in a conviction or dismissal, or is still awaiting court disposition, as reported in the NM MVD Citation Tracking System (CTS) as of December 2017.

<sup>2</sup> For this table, a very small number of "not guilty" rulings may be included in the category Dismissals.

**Table 26: Average Number of Days from Date of DWI Arrest to Date of Court Disposition in Valencia County and the State, 2016**

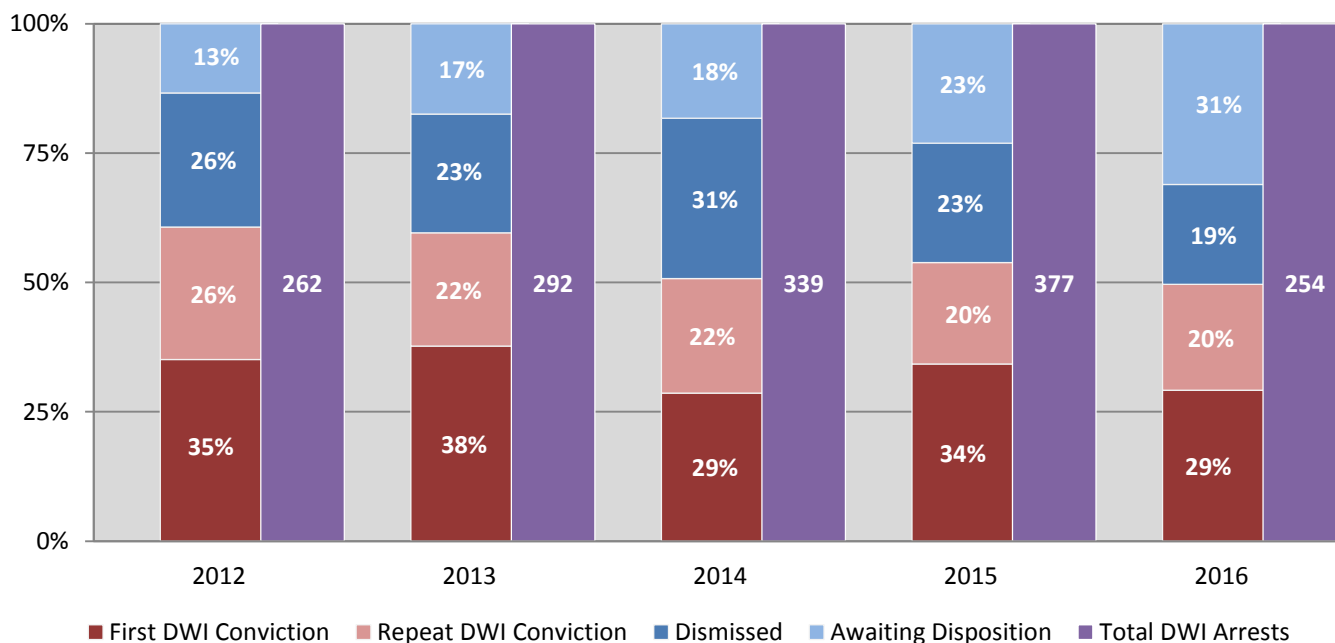
Court Disposition	Average Number of Days		Deviation from Statewide Average
	Valencia County	Statewide	
DWI Conviction	176	157	<b>19</b>
DWI Dismissal	188	179	<b>9</b>

**Table 27: Court Disposition of DWI Arrests in Valencia County, 2012-2016**

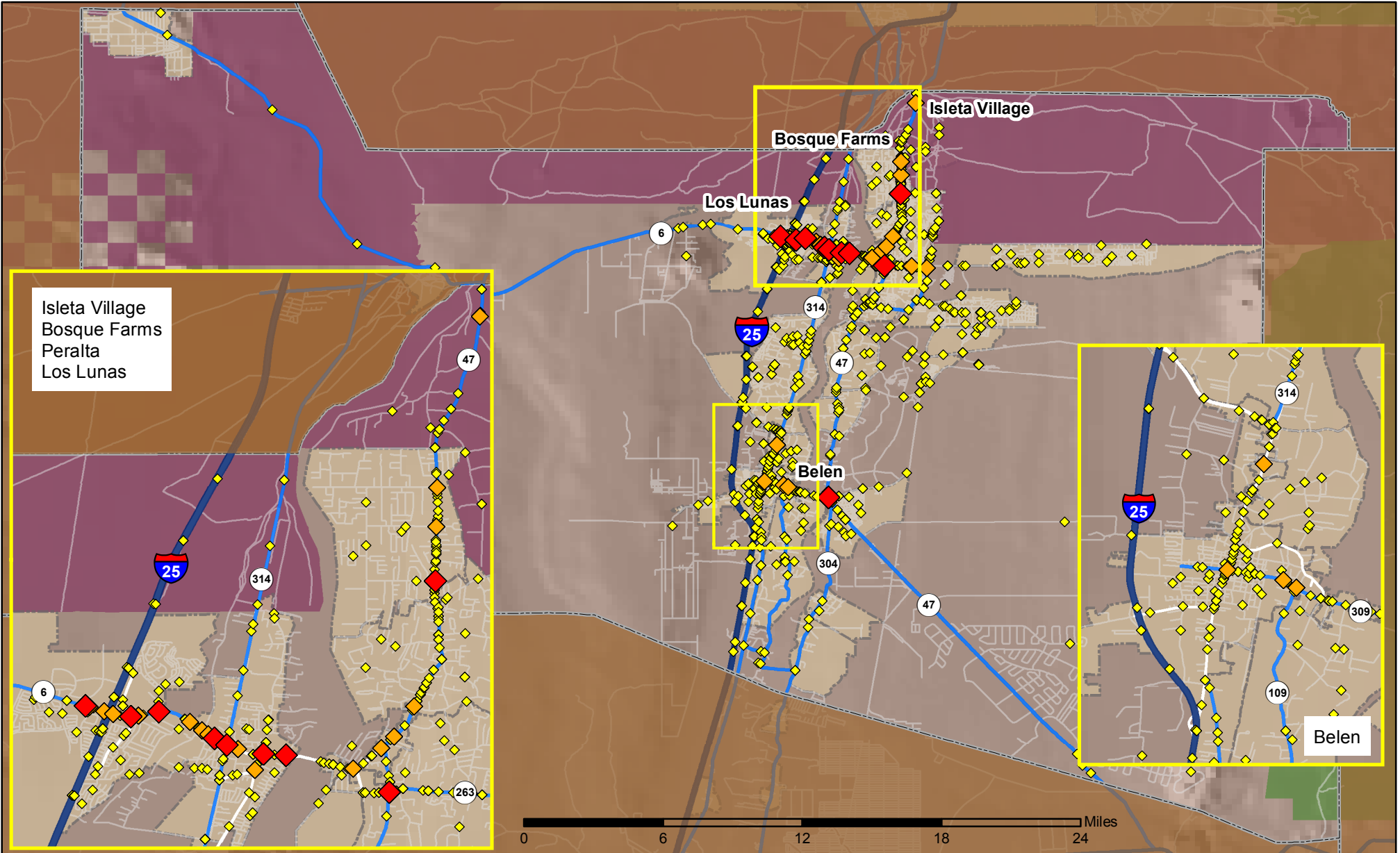
Year of DWI Arrest <sup>1</sup>	Court Disposition				Total DWI Arrests
	First DWI Conviction	Repeat DWI Conviction	Dismissed	Awaiting Disposition	
2012	92	67	68	35	262
2013	110	64	67	51	292
2014	97	75	105	62	339
2015	129	74	87	87	377
2016	74	52	49	79	254

<sup>1</sup> Values are based upon the year of the arrest.

**Figure 14: Court Dispositions by Percentage of DWI Arrests in Valencia County, 2012-2016**



\*Table 27 contains the values used to calculate percentages shown in Figure 14.



## Legend

Data Source: NMDOT Crash File 2016  
<http://tru.unm.edu> CO#5801 tru@unm.edu

- Forest & Wildlife Areas
- Reservations & Pueblos
- County Boundaries
- City Boundaries

- Interstate Highways
- U.S. Highways
- State Highways
- Streets & Roadways

## Crashes 2016

- 1 - 5 Crashes
- 6 - 12 Crashes
- 13 - 27 Crashes