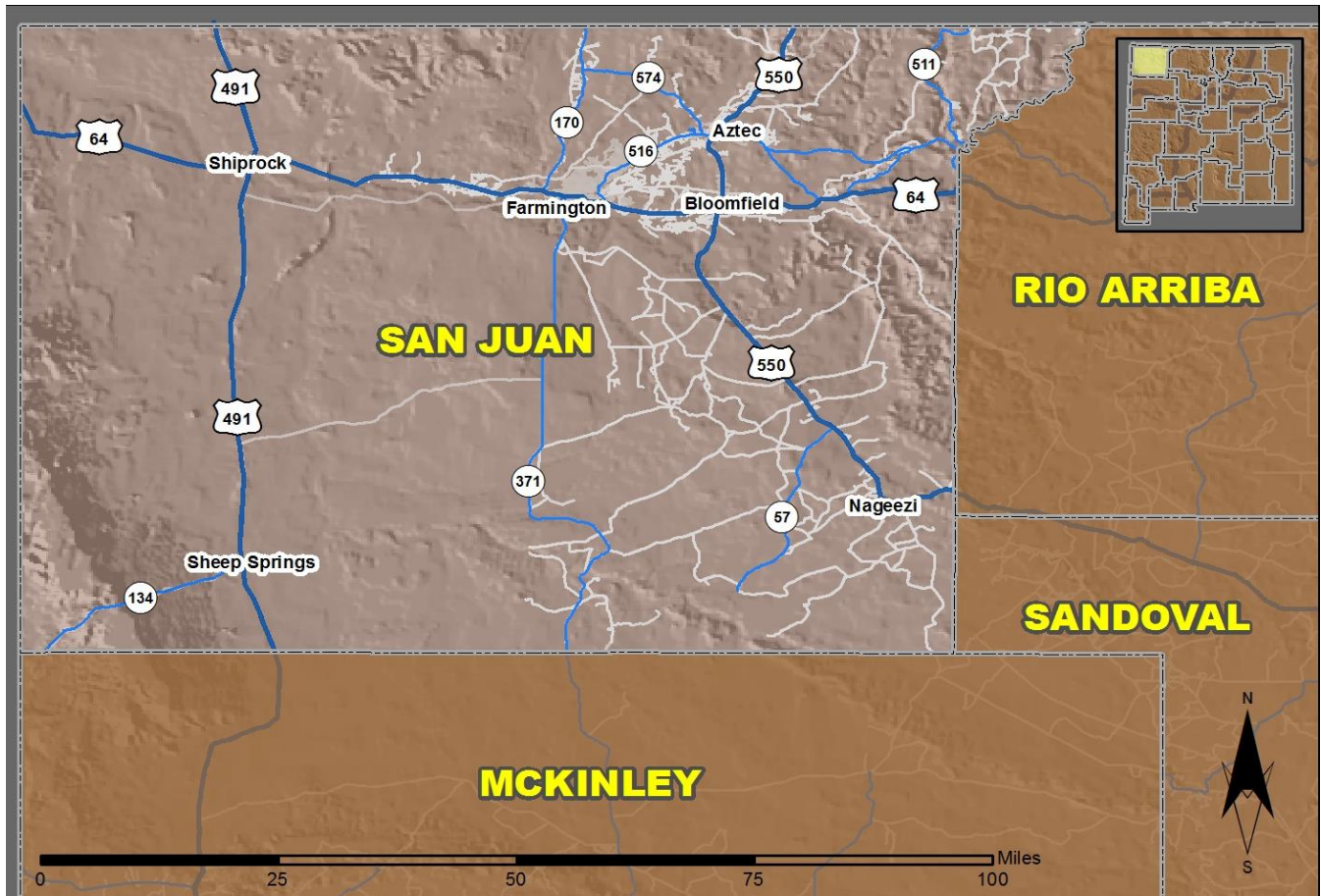


2017 Community Report

Bloomfield



Produced for the New Mexico Department of Transportation,
Traffic Safety Division, Traffic Records Bureau,
Under Contract 6093 by the University of New Mexico,
Geospatial and Population Studies, Traffic Research Unit

Distributed in compliance with New Mexico Statute 66-7-214
as a reference source regarding New Mexico traffic crashes

For the purposes of this report, data are compiled by the University of New Mexico, Geospatial and Population Studies, Traffic Research Unit (TRU), on behalf of the New Mexico Department of Transportation (NMDOT). Data in this report may differ from that in other data sources, such as the Federal Fatality Analysis Reporting System (FARS), due to the timing of publications and rules for how data are compiled and maintained in Federal vs. State databases. If you have questions regarding this report, please contact the Traffic Safety Division at 505-827-0427.

<http://tru.unm.edu/Crash-Reports/Community-Reports/>

Definitions

Aggravated DWI – A driver arrested for 1) driving with a BAC of 0.16 or higher, 2) driving under the influence of alcohol or drugs and causing bodily injury to a human being as a result, or 3) driving under the influence of alcohol or drugs and refusing to submit to a BAC test at the time of arrest for DWI.

Alcohol-involved Crash – A crash for which the Uniform Crash Report indicated that 1) a DWI citation was issued, 2) alcohol was a contributing factor, or 3) a person in control of a vehicle (including a pedestrian or pedalcyclist) was suspected of being under the influence of alcohol.

Alcohol-involved Driver – A person in control of a vehicle who was cited for DWI or indicated on the Uniform Crash Report as being either suspected or determined by testing to be under the influence of alcohol. There can be multiple alcohol-involved drivers in a single alcohol-involved crash.

Crash – A reported incident on a public roadway involving one or more motor vehicles that resulted in death, personal injury, or at least \$500 in property damage. Crashes on private property (such as a parking lot) are not included.

DWI Arrest (Citation) – In this report, a DWI arrest (a.k.a. a DWI citation) is a driver arrested for either DWI or aggravated DWI. New Mexico’s legal limit for presumption of driving while intoxicated (DWI) is 0.08 for non-commercial drivers older than 21 years of age, 0.04 for commercial vehicle drivers, and 0.02 for drivers younger than 21 years of age.

DWI Conviction – A driver convicted of driving under the intoxicating influence of alcohol, narcotics, or pathogenic drugs, including aggravated DWI.

Fatal Crash – A crash in which at least one person was killed. More than one person can be killed in a single fatal crash.

Fatalities – The number of people killed in a crash. The terms “killed” and “deaths” are synonymous with “fatalities.” A fatality is crash-related if it occurs at the time of the crash or if the person(s) involved in the crash dies within 30 days.

Injury Crash – A reported crash in which at least one person was injured. Injury crashes involve at least one suspected serious injury (Class A), suspected minor injury (Class B), or possible injury (Class C). Fatal crashes are not included.

Missing Data – An indication that the applicable field on the UCR form was left blank or contained an invalid code. Starting with crashes that occurred in 2012, improvements in the identification of missing data in the NMDOT crash database led to an increase in the reported amount of missing data.

Pedalcyclist – A person riding a mechanism of transport that is powered solely by pedals (a.k.a. bicyclist).

Pedestrian – A person on foot, walking, running, jogging, hiking, sitting or lying down who is involved in a motor vehicle traffic crash.

Sources

Crash Data – New Mexico Department of Transportation, Traffic Safety Division, Traffic Records Bureau, Traffic Crash Database, as of the report date below. Crash data are compiled using NMDOT Uniform Crash Reports (UCR), submitted by law enforcement agencies in the state, for any incident on a public roadway involving one or more motor vehicles that resulted in death, injury, or at least \$500 in property damage. These reports are processed by the NMDOT Traffic Records Bureau and analyzed by the University of New Mexico, Geospatial and Population Studies, Traffic Research Unit (TRU).

DWI Citation Tracking System (CTS) – New Mexico Taxation and Revenue Department (NM TRD), Motor Vehicle Division (MVD), DWI Citation Tracking System (CTS), as of February 2019. Repeat offenders are identified by the combination of account key, arrest date, and citation number. County data are based upon the county where the arrest took place. City data are based upon the city where the offender resides.

Urban Areas – New Mexico Department of Transportation, Asset Management and Planning, 2010 U.S. Census Urbanized Area Boundaries, NMDOT-Adjusted, and U.S. Census Urban Clusters, August 21, 2013. In crashes before 2013, “urban” was defined as a town or city with a population of at least 2,500 people.

Table 1: Total Crashes and Alcohol-involved Crashes by Crash Severity in Bloomfield, 2008-2017

Year	Total Crashes				Alcohol-involved Crashes			
	Fatal	Injury	Property Damage Only	Total	Fatal	Injury	Property Damage Only	Total
2008	0	43	111	154	0	7	4	11
2009	0	30	90	120	0	1	3	4
2010	1	31	83	115	0	3	3	6
2011	0	47	113	160	0	2	5	7
2012	1	38	114	153	0	2	8	10
2013	2	21	115	138	1	0	5	6
2014	3	32	95	130	0	3	12	15
2015	0	31	73	104	0	0	4	4
2016	0	31	77	108	0	1	2	3
2017	0	29	69	98	0	3	1	4

Figure 1: Alcohol-involved Fatal and Injury Crashes Compared with Non-alcohol-involved Fatal and Injury Crashes in Bloomfield, 2008-2017

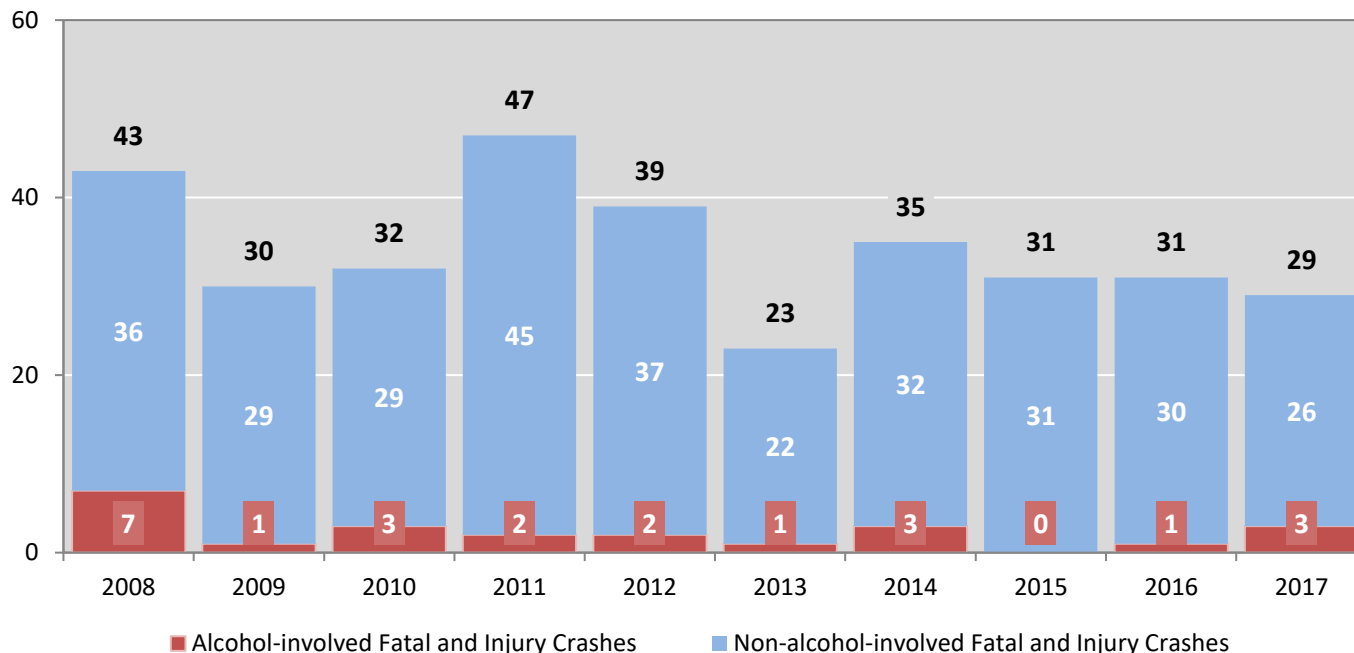


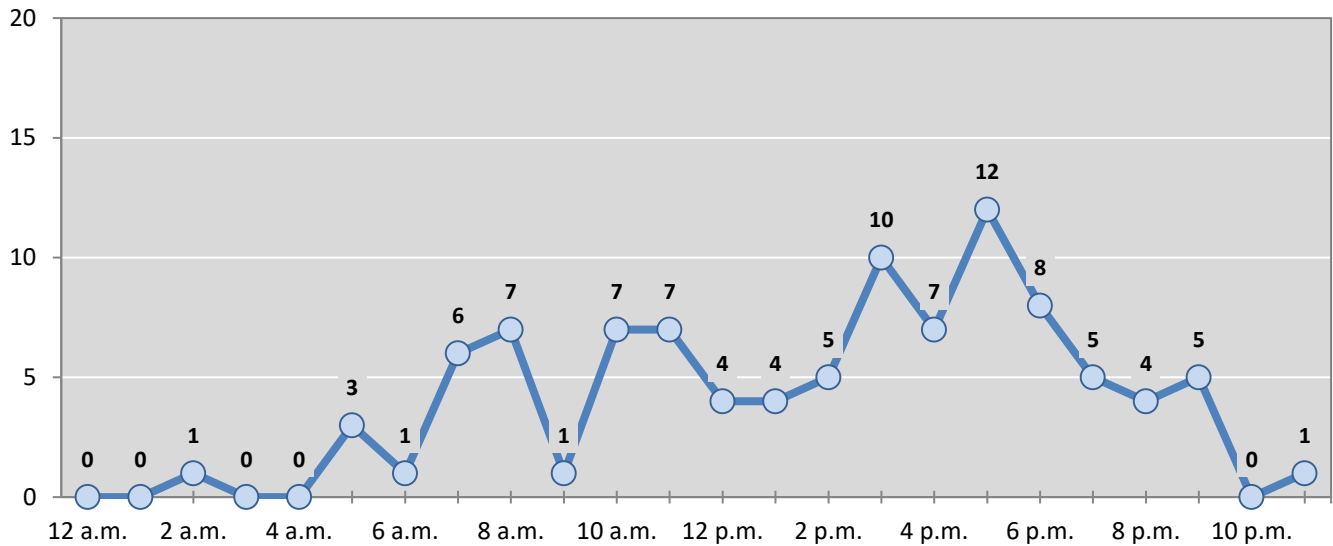
Table 2: Crashes by Month in Bloomfield, 2013-2017

Month	Crashes					5-Year Average
	2013	2014	2015	2016	2017	
January	8	15	1	14	10	10
February	13	11	9	9	7	10
March	8	12	9	10	9	10
April	7	7	7	4	9	7
May	17	5	8	7	6	9
June	13	3	6	8	8	8
July	6	6	9	5	11	7
August	14	9	9	8	4	9
September	14	18	7	16	11	13
October	14	14	6	11	7	10
November	12	13	14	13	10	12
December	12	17	19	3	6	11
Total Crashes	138	130	104	108	98	116

Table 3: Alcohol-involved Crashes by Month in Bloomfield, 2013-2017

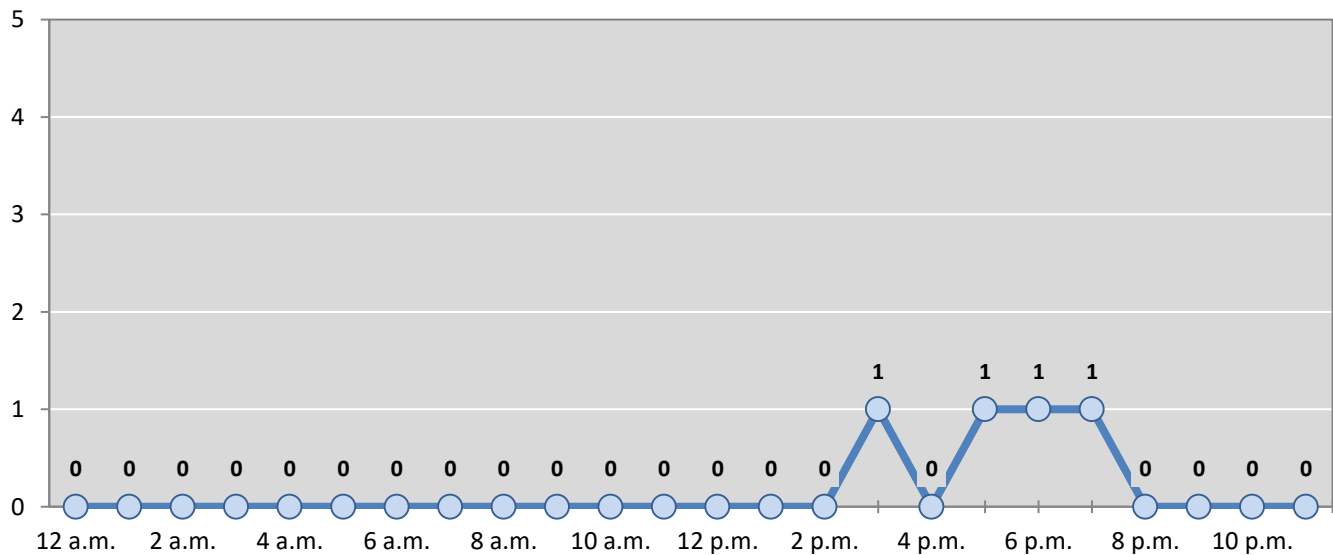
Month	Alcohol-involved Crashes					5-Year Average
	2013	2014	2015	2016	2017	
January	0	2	0	1	0	1
February	2	1	0	0	0	1
March	1	3	1	1	2	2
April	0	0	0	0	0	0
May	1	0	0	0	0	0
June	1	1	0	0	1	1
July	0	1	1	0	0	0
August	1	0	0	0	0	0
September	0	3	1	0	1	1
October	0	1	0	0	0	0
November	0	2	1	1	0	1
December	0	1	0	0	0	0
Total Crashes	6	15	4	3	4	6

Figure 2: Crashes by Hour in Bloomfield, 2017



* In 2017, Bloomfield had 0 crashes for which hour data were missing.

Figure 3: Alcohol-involved Crashes by Hour in Bloomfield, 2017



* In 2017, Bloomfield had 0 alcohol-involved crashes for which hour data were missing.

Table 4: Alcohol-involved Crashes by Day of Week in Bloomfield, 2013-2017

Day of Week	Alcohol-involved Crashes					5-Year Average
	2013	2014	2015	2016	2017	
Sunday	0	2	1	0	1	1
Monday	1	2	0	1	0	1
Tuesday	0	3	0	1	1	1
Wednesday	0	2	0	0	0	0
Thursday	2	0	0	0	0	0
Friday	1	2	0	1	1	1
Saturday	2	4	3	0	1	2
Total Crashes	6	15	4	3	4	6

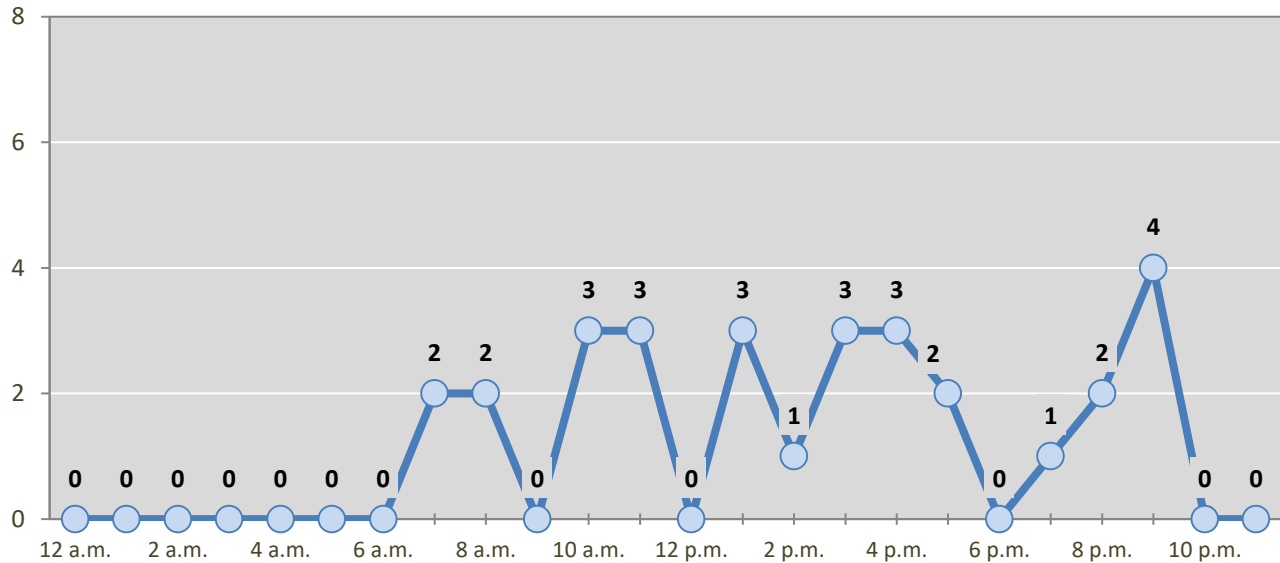
Table 5: Fatal and Injury Crashes by Day of Week in Bloomfield, 2013-2017

Day of Week	Fatal and Injury Crashes					5-Year Average
	2013	2014	2015	2016	2017	
Sunday	2	3	3	2	3	3
Monday	3	8	5	5	2	5
Tuesday	3	3	7	6	3	4
Wednesday	2	8	2	5	7	5
Thursday	5	7	7	5	7	6
Friday	5	4	3	6	6	5
Saturday	3	2	4	2	1	2
Total Crashes	23	35	31	31	29	30

Table 6: Pedestrian and Pedalcyclist Crashes by Day of Week in Bloomfield, 2013-2017

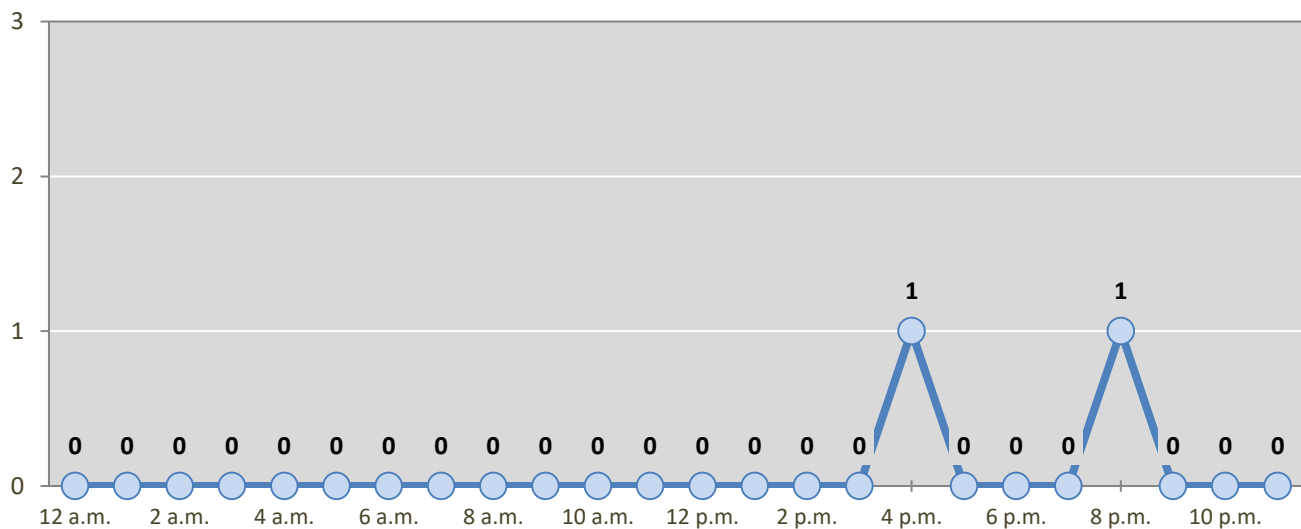
Day of Week	Pedestrian and Pedalcyclist Crashes					5-Year Average
	2013	2014	2015	2016	2017	
Sunday	0	0	0	0	0	0
Monday	0	0	0	1	0	0
Tuesday	0	0	0	1	1	0
Wednesday	0	0	1	0	0	0
Thursday	0	0	0	0	1	0
Friday	0	0	0	0	0	0
Saturday	0	0	0	0	0	0
Total Crashes	0	0	1	2	2	1

Figure 4: Fatal and Injury Crashes by Hour in Bloomfield, 2017



* In 2017, Bloomfield had 0 crash for which hour data were missing.

Figure 5: Pedestrian and Pedalcyclist Crashes by Hour in Bloomfield, 2017



* In 2017, Bloomfield had 0 crashes for which hour data were missing.

Table 7: Severity of Injuries to People in Crashes by Rural and Urban Location in Bloomfield, 2017

Urban and Rural Locations by Alcohol-involvement	People in Crashes by Severity of Injuries					Total People
	Fatalities (Class K)	Suspected Serious Injuries (Class A)	Suspected Minor Injuries (Class B)	Possible Injuries (Class C)	No Apparent Injuries (Class O)	
People in Alcohol-involved Crashes	0	0	1	7	5	13
Urban	0	0	1	1	3	5
Rural Non-Interstate	0	0	0	6	2	8
Rural Interstate	0	0	0	0	0	0
People in Crashes	0	1	15	28	217	261
Urban	0	1	15	21	208	245
Rural Non-Interstate	0	0	0	7	9	16
Rural Interstate	0	0	0	0	0	0
Percent in Alcohol-involved Crashes	0%	0%	7%	25%	2%	5%

Table 8: Total Crashes by Roadway System and Crash Severity in Bloomfield, 2013-2017

Crash Severity by System	Crashes by Year					5-Year Average
	2013	2014	2015	2016	2017	
Total Rural Interstate	0	0	0	0	0	0
Fatal Crash	0	0	0	0	0	0
Injury Crash	0	0	0	0	0	0
Property Damage Only Crash	0	0	0	0	0	0
Total Rural Non-Interstate	11	24	4	3	5	9
Fatal Crash	1	0	0	0	0	0
Injury Crash	5	8	4	0	2	4
Property Damage Only Crash	5	16	0	3	3	5
Total Urban	127	106	100	105	93	106
Fatal Crash	1	3	0	0	0	1
Injury Crash	16	24	27	31	27	25
Property Damage Only Crash	110	79	73	74	66	80

Table 9: Total Crashes by Crash Classification in Bloomfield, 2013-2017

Crash Classification	Total Crashes by Year					5-Year Average
	2013	2014	2015	2016	2017	
Animal	11	13	11	8	5	10
Fixed Object	22	14	13	13	10	14
Other (Non-Collision)	2	3	1	1	3	2
Other (Object)	8	5	1	3	6	5
Other Vehicle	77	88	68	74	66	75
Overturn/Rollover	6	6	1	1	3	3
Parked Vehicle	7	1	4	5	1	4
Pedalcyclist	0	0	0	1	0	0
Pedestrian	0	0	1	1	2	1
Railroad Train	0	0	0	0	0	0
Rollover	0	0	1	0	0	0
Vehicle on Other Road	2	0	2	1	2	1
Missing Data	3	0	1	0	0	1
Total Crashes	138	130	104	108	98	116

Table 10: Vehicles in Crashes by Vehicle Type in Bloomfield, 2013-2017

Vehicle Type ¹	Vehicles in Crashes by Vehicle Type					5-Year Average
	2013	2014	2015	2016	2017	
Bus	0	1	1	1	1	1
Motorcycle	2	3	2	4	2	3
Passenger	80	69	68	68	59	69
Pedalcyclist	0	0	0	1	0	0
Pedestrian	0	0	1	1	2	1
Pickup	84	80	66	62	58	70
Semi	11	14	8	7	10	10
Van/SUV/4WD	41	42	36	40	37	39
Other Vehicle	3	2	1	3	1	2
Missing Data	19	15	5	9	5	11
Total Vehicles	240	226	188	196	175	205

¹ Pedestrians and pedalcyclists are counted as non-motorized vehicles, when involved in a crash with a motor vehicle. See Page 17 for data on drivers of non-motorized vehicles in crashes (i.e. pedestrians and pedalcyclists).

Table 11: Motor Vehicle Drivers in Crashes by Vehicle Type and Age Group in Bloomfield, 2017

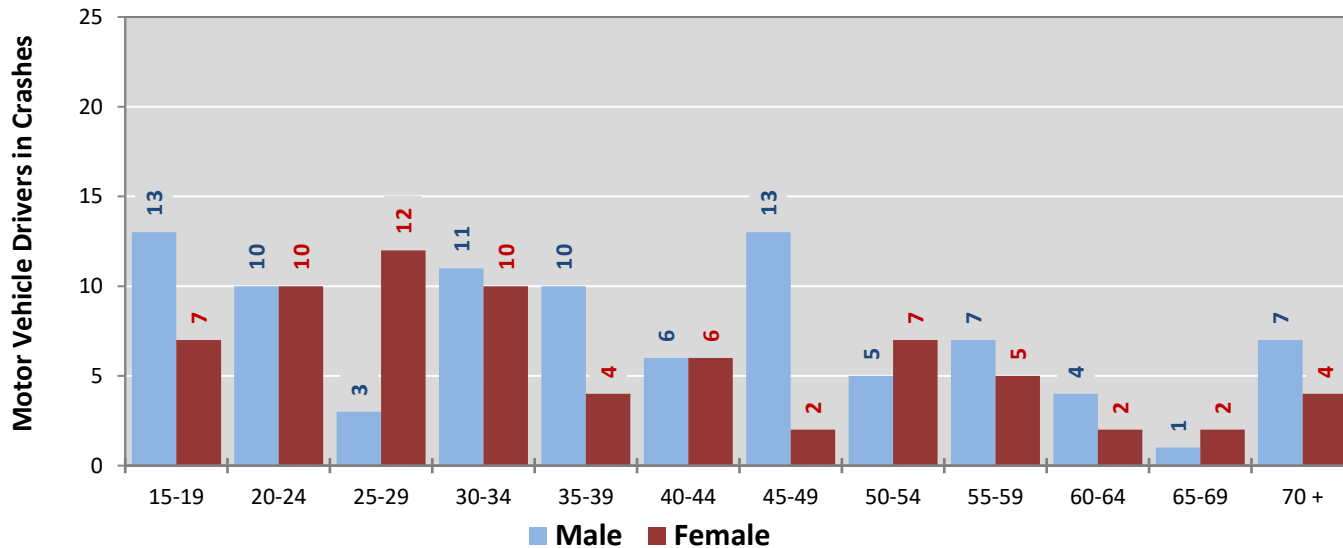
Age Groups	Motor Vehicle ¹ Drivers by Vehicle Type and Age Group								Total Drivers
	Bus	Motor-cycle	Passenger	Pickup	Semi	Van 4WD SUV	Other Vehicle	Missing Data	
15-19	0	2	7	7	0	4	0	0	20
20-24	0	0	8	6	2	4	0	0	20
25-29	0	0	12	1	0	1	0	1	15
30-34	0	0	7	5	2	7	0	0	21
35-39	0	0	4	6	1	3	0	0	14
40-44	0	0	2	6	1	3	0	0	12
45-49	0	0	4	5	1	4	1	0	15
50-54	0	0	5	3	1	3	0	0	12
55-59	0	0	1	8	1	2	0	0	12
60-64	1	0	1	4	0	0	0	0	6
65-69	0	0	2	1	0	0	0	0	3
70 +	0	0	4	4	0	3	0	0	11
Missing Data	0	0	2	2	1	3	0	4	12
Total Drivers	1	2	59	58	10	37	1	5	173

Table 12: Alcohol-involved Motor Vehicle Drivers in Crashes by Vehicle Type and Age Group in Bloomfield, 2017

Age Groups	Alcohol-involved Motor Vehicle ¹ Drivers by Vehicle Type and Age Group								Total Drivers
	Bus	Motor-cycle	Passenger	Pickup	Semi	Van 4WD SUV	Other Vehicle	Missing Data	
15-19	0	0	0	0	0	0	0	0	0
20-24	0	0	1	0	0	0	0	0	1
25-29	0	0	2	0	0	0	0	0	2
30-34	0	0	0	0	0	0	0	0	0
35-39	0	0	0	0	0	0	0	0	0
40-44	0	0	0	0	0	1	0	0	1
45-49	0	0	0	0	0	0	0	0	0
50-54	0	0	0	0	0	0	0	0	0
55-59	0	0	0	0	0	0	0	0	0
60-64	0	0	0	0	0	0	0	0	0
65-69	0	0	0	0	0	0	0	0	0
70 +	0	0	0	0	0	0	0	0	0
Missing Data	0	0	0	0	0	0	0	0	0
Total Drivers	0	0	3	0	0	1	0	0	4

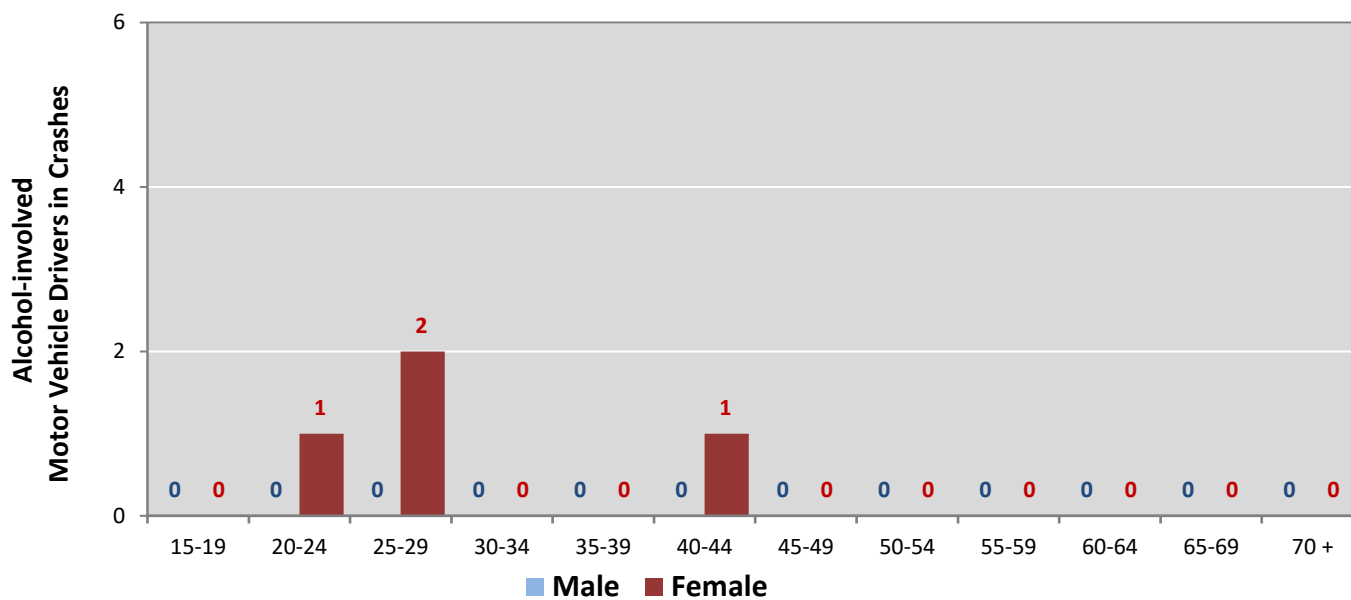
¹ See Page 17 for data on drivers of non-motorized vehicles in crashes (i.e. pedestrians and pedalcyclists).

Figure 6: Motor Vehicle Drivers in Crashes by Age Group and Sex in Bloomfield, 2017



* In 2017, Bloomfield had 12 drivers in crashes for which age or sex data were missing.

Figure 7: Alcohol-involved Motor Vehicle Drivers in Crashes by Age Group and Sex in Bloomfield, 2017



* In 2017, Bloomfield had 0 drivers in crashes for which age or sex data were missing.

Table 13: Alcohol-involved Motor Vehicle Drivers Under 21 (Ages 15-20) in Crashes in Bloomfield, 2013-2017

Age ¹	Year					5-Year Total
	2013	2014	2015	2016	2017	
15	0	0	0	0	0	0
16	0	0	0	0	0	0
17	0	0	0	0	0	0
18	0	1	0	0	0	1
19	0	1	0	0	0	1
20	0	0	1	0	0	1
Total Drivers	0	2	1	0	0	3

Table 14: Motor Vehicle Drivers Under 21 (Ages 15-20) in Crashes by Age, Sex and Alcohol-involvement in Bloomfield, 2017

Age ¹	Total Drivers				Alcohol-involved Drivers			
	Sex		Total Drivers	Percent of Total	Sex		Total Drivers	Percent of Total
	Male	Female			Male	Female		
15	1	0	1	4%	0	0	0	0%
16	2	3	5	19%	0	0	0	0%
17	2	3	5	19%	0	0	0	0%
18	4	1	5	19%	0	0	0	0%
19	4	0	4	15%	0	0	0	0%
20	3	3	6	23%	0	0	0	0%
Total Drivers	16	10	26	100%	0	0	0	0%

¹ For analysis of drivers under age 21, when the driver age or sex are not identified on the crash report (typically hit-and-run drivers), the driver data are considered unreliable and are excluded from the analysis.

**Table 15: Frequency of Contributing Factors in Crashes
by Crash Severity in Bloomfield, 2017**

Contributing Factors	Frequency of Contributing Factor ¹ by Crash Severity			
	Frequency in Fatal Crashes	Frequency in Injury Crashes	Frequency in Property Damage Only Crashes	Frequency in All Crashes
Human	0	46	89	135
Driver Inattention	0	13	26	39
Following Too Closely	0	8	11	19
Failed to Yield Right of Way	0	6	11	17
Made Improper Turn	0	3	9	12
Excessive Speed	0	5	5	10
Other Improper Driving	0	3	7	10
Avoid No Contact - Vehicle	0	0	6	6
Improper Backing	0	1	4	5
Alcohol Involved	0	3	1	4
Avoid No Contact - Other	0	1	2	3
Disregarded Traffic Signal	0	0	2	2
Passed Stop Sign	0	0	2	2
Speed Too Fast for Conditions	0	1	1	2
Cell Phone	0	1	0	1
Drove Left Of Center	0	0	1	1
Improper Overtaking	0	0	1	1
Pedestrian Error	0	1	0	1
Driverless Moving Vehicle	0	0	0	0
Failed to Yield to Emergency Vehicle	0	0	0	0
Failed to Yield to Police Vehicle	0	0	0	0
High Speed Pursuit	0	0	0	0
Improper Lane Change	0	0	0	0
Texting	0	0	0	0
Drug Involved	0	0	0	0
Vehicle Skidded Before Brake	0	0	0	0
Vehicle	0	2	3	5
Inadequate Brakes	0	1	2	3
Defective Tires	0	1	0	1
Other Mechanical Defect	0	0	1	1
Defective Steering	0	0	0	0
Environment	0	0	0	0
Low Visibility Due to Smoke	0	0	0	0
Road Defect	0	0	0	0
Traffic Control Not Functioning	0	0	0	0
Other	0	18	57	75
None	0	17	44	61
Other - No Driver Error	0	1	13	14

¹ Multiple contributing factors may be reported for any vehicle in a crash.

Table 16: People in Crashes by Crash Classification and Severity of Injuries in Bloomfield, 2017

Crash Classification	People in Crashes by Severity of Injuries					Total People
	Fatalities (Class K)	Suspected Serious Injuries (Class A)	Suspected Minor Injuries (Class B)	Possible Injuries (Class C)	No Apparent Injuries (Class O)	
Animal	0	0	0	0	5	5
Fixed Object	0	0	2	2	13	17
Other (Non-Collision)	0	1	0	0	9	10
Other (Object)	0	0	2	0	5	7
Other Vehicle	0	0	9	23	172	204
Overturn/Rollover	0	0	1	2	4	7
Parked Vehicle	0	0	0	0	2	2
Pedalcyclist	0	0	0	0	0	0
Pedestrian	0	0	1	1	3	5
Railroad Train	0	0	0	0	0	0
Rollover	0	0	0	0	0	0
Vehicle on Other Road	0	0	0	0	4	4
Missing Data	0	0	0	0	0	0
Total People	0	1	15	28	217	261

Table 17: Killed or Injured Unbelted People in Crashes by Sex and Age Group in Bloomfield, 2017

Age Groups	Unbelted People Killed or Injured ^{1,2}				Total People
	Male	Percent of Male	Female	Percent of Female	
0-4	0	0%	0	0%	0
5-9	0	0%	0	0%	0
10-14	0	0%	0	0%	0
15-19	0	0%	1	100%	1
20-24	0	0%	0	0%	0
25-29	0	0%	0	0%	0
30-34	0	0%	0	0%	0
35-39	0	0%	0	0%	0
40-44	0	0%	0	0%	0
45-49	0	0%	0	0%	0
50-54	0	0%	0	0%	0
55-59	0	0%	0	0%	0
60-64	0	0%	0	0%	0
65-69	0	0%	0	0%	0
70 +	0	0%	0	0%	0
Missing Data	0	0%	0	0%	0
Total People	0	0%	1	100%	1

¹ People injured are in one of three categories: suspected serious injury, suspected minor injury, or possible injury.

² Excludes people in or on buses, heavy trucks, motorcycles, or ATVs.

Figure 8: Seatbelt Use by People in Crashes with Fatal or Suspected Serious Injuries in Bloomfield, 2013-2017

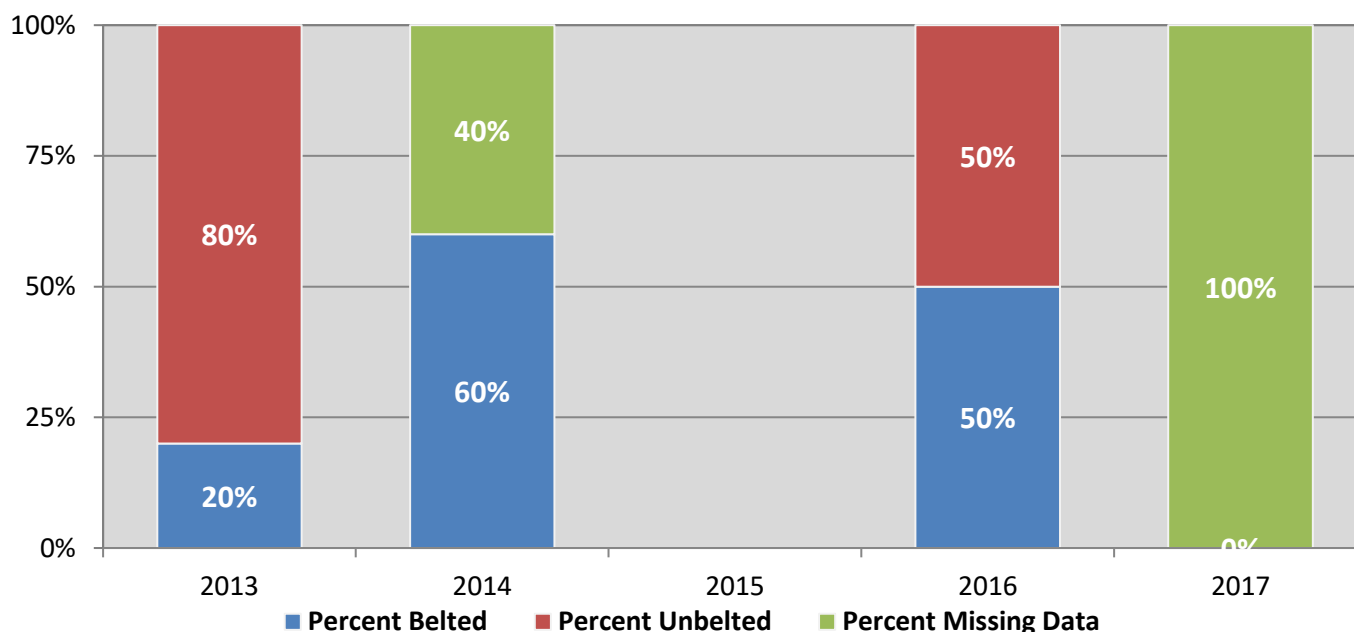
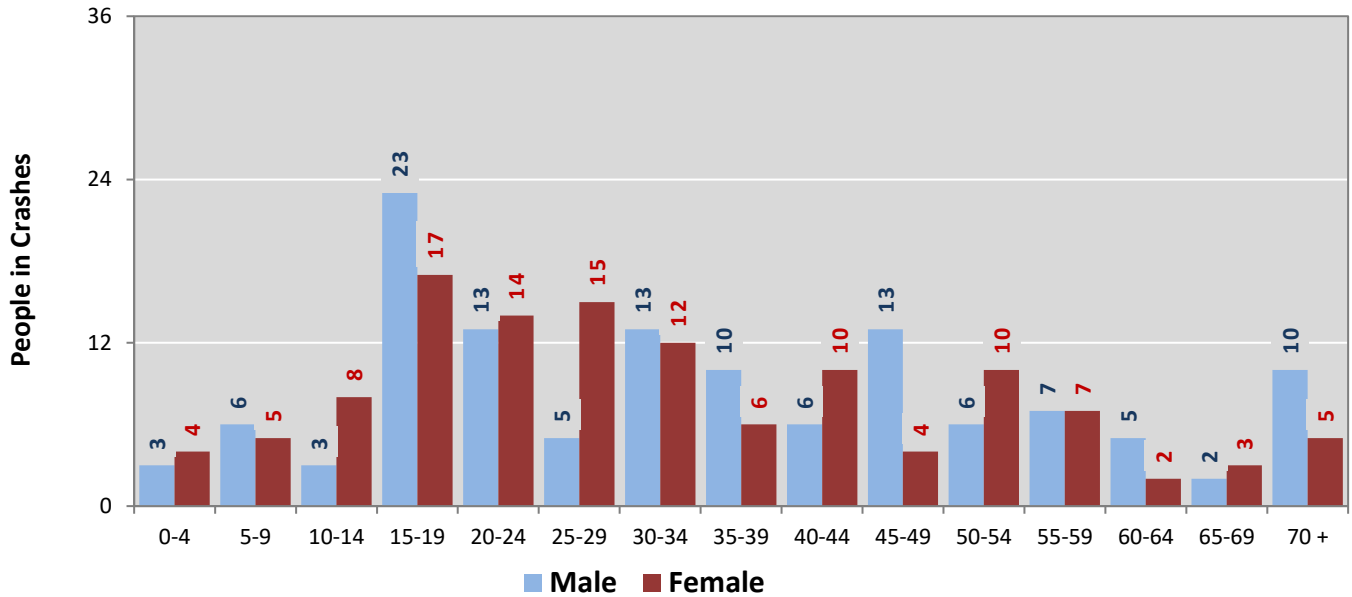
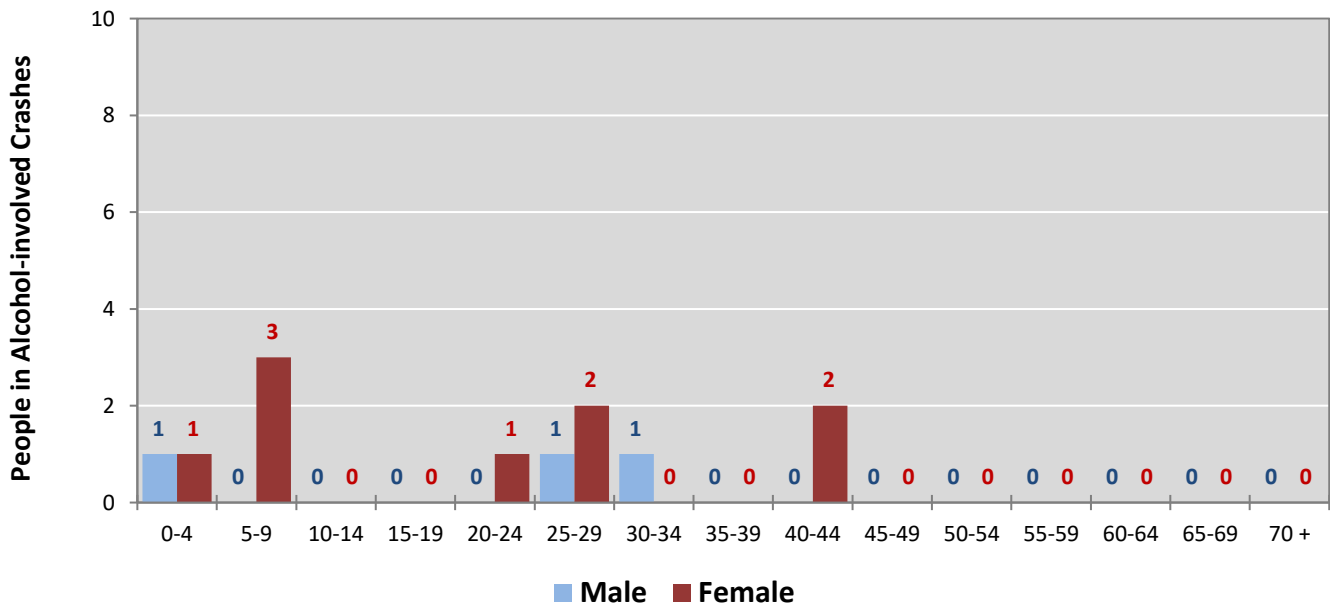


Figure 9: People in Crashes by Age Group and Sex in Bloomfield, 2017



* In 2017, Bloomfield had 14 people in crashes for which age or sex data were missing.

Figure 10: People in Alcohol-involved Crashes by Age Group and Sex in Bloomfield, 2017



* In 2017, Bloomfield had 1 people in alcohol-involved crashes for which age or sex data were missing.

**Table 18: Pedestrians and Pedalcyclists in Crashes
by Age Group in Bloomfield, 2013-2017**

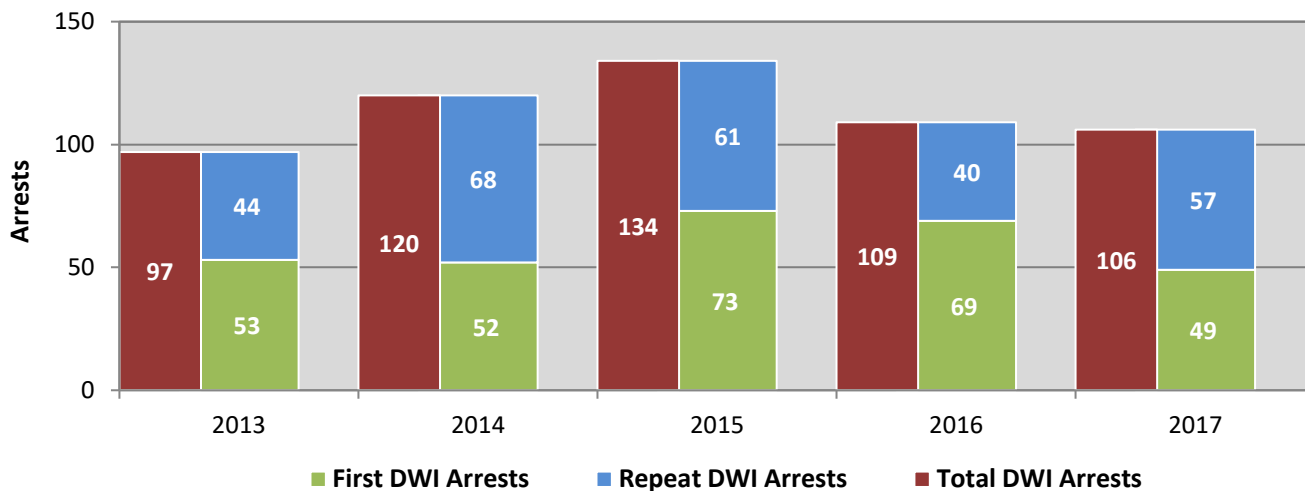
Age Groups	Pedestrians and Pedalcyclists ¹ in Crashes					5-Year Total People
	2013	2014	2015	2016	2017	
0-4	0	0	0	0	0	0
5-9	0	0	0	0	0	0
10-14	0	0	0	0	0	0
15-19	0	0	1	0	1	2
20-24	0	0	0	0	1	1
25-29	0	0	0	0	0	0
30-34	0	0	0	0	0	0
35-39	0	0	0	0	0	0
40-44	0	0	0	1	0	1
45-49	0	0	0	1	0	1
50-54	0	0	0	0	0	0
55-59	0	0	0	0	0	0
60-64	0	0	0	0	0	0
65-69	0	0	0	0	0	0
70 +	0	0	0	0	0	0
Missing Data	0	0	0	0	0	0
Total People	0	0	1	2	2	5

**Table 19: Pedestrians and Pedalcyclists in Crashes by Alcohol Involvement
and Severity of Injuries in Bloomfield, 2017**

Alcohol Involvement	Pedestrians and Pedalcyclists ¹ in Crashes					Total People
	Fatalities (Class K)	Suspected Serious Injuries (Class A)	Suspected Minor Injuries (Class B)	Possible Injuries (Class C)	No Apparent Injury (Class O)	
Total Pedalcyclists	0	0	0	0	0	0
Involved	0	0	0	0	0	0
Not Involved	0	0	0	0	0	0
Total Pedestrians	0	0	1	1	0	2
Involved	0	0	0	0	0	0
Not Involved	0	0	1	1	0	2
Total People	0	0	1	1	0	2

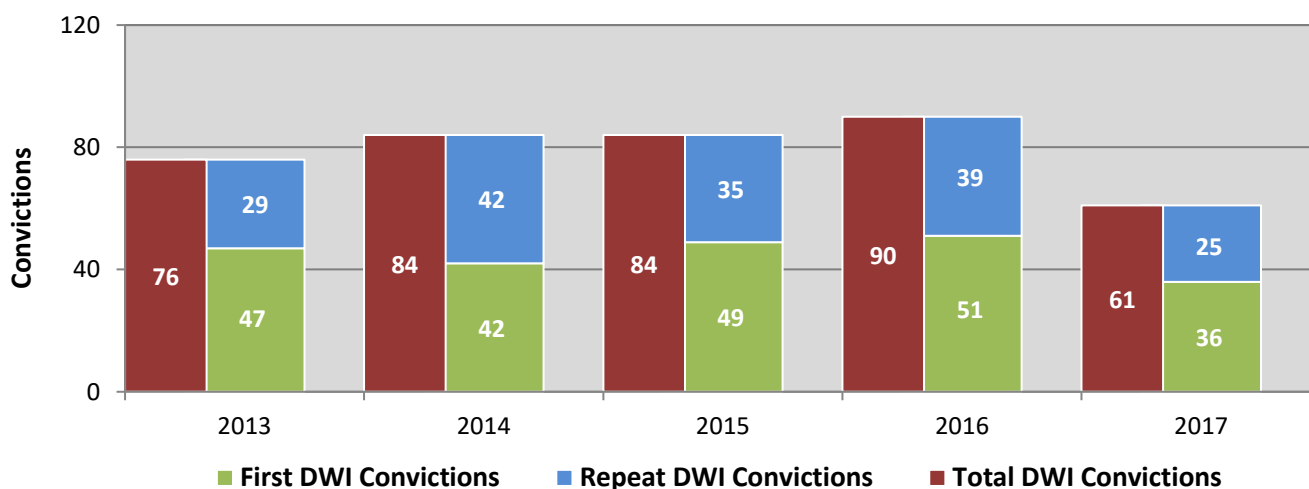
¹ Pedestrians and pedalcyclists are counted as non-motorized vehicles, when involved in a crash with a motor vehicle.

Figure 11: DWI Arrests of Bloomfield Residents Throughout the State, Showing First and Repeat DWI Arrests, 2013-2017



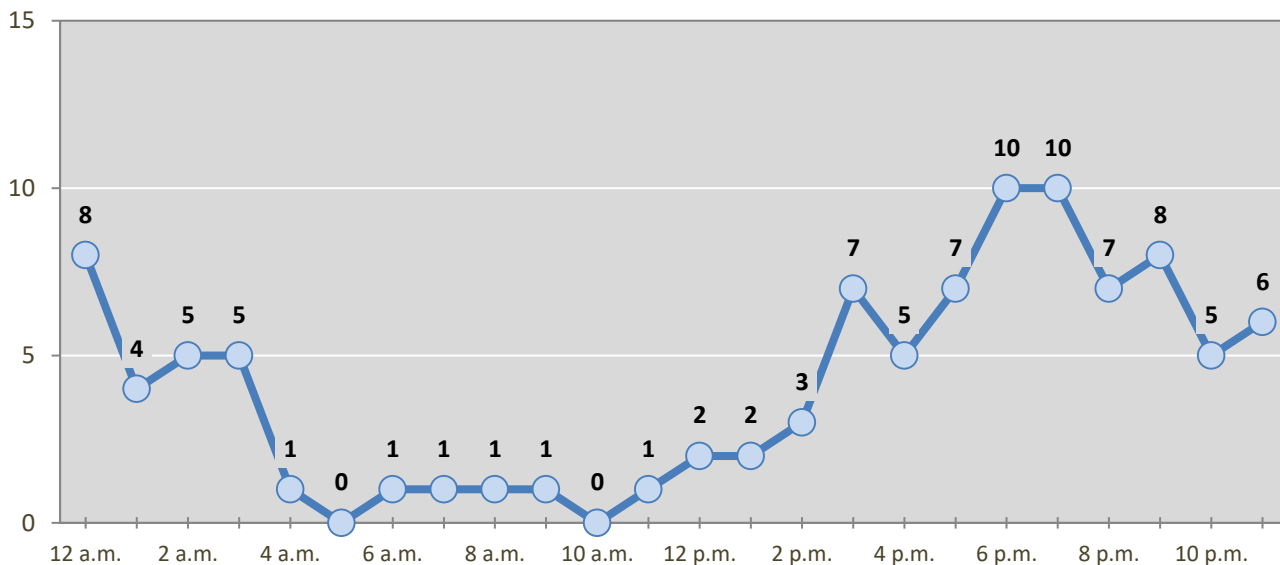
*Values are based upon the year of the arrest.

Figure 12: DWI Convictions of Bloomfield Residents Throughout the State, Showing First and Repeat DWI Convictions, 2013-2017



*Values are based upon the year of the conviction.

Figure 13: DWI Arrests by Hour of Bloomfield Residents Throughout the State, 2017



* In 2017, Bloomfield had 6 arrests for which hour data were missing.

Table 20: DWI Arrests by Day of Week of Bloomfield Residents Throughout the State, 2013-2017

Day of Week	Year					5-Year Average
	2013	2014	2015	2016	2017	
Sunday	14	20	22	16	21	19
Monday	13	12	10	14	11	12
Tuesday	10	15	12	12	9	12
Wednesday	14	12	21	12	11	14
Thursday	14	18	19	12	14	15
Friday	12	23	25	13	18	18
Saturday	20	20	25	30	22	23
Total Arrests	97	120	134	109	106	113

Table 21: Driver First DWI Arrests by Age Group of Bloomfield Residents Throughout the State, 2013-2017

Age Groups	Driver First DWI Arrests ¹				
	2013	2014	2015	2016	2017
15-19	4	7	4	5	9
20-24	14	15	16	16	7
25-29	9	13	12	14	10
30-34	13	4	13	6	10
35-39	6	3	9	4	6
40-44	4	2	5	8	3
45-49	2	4	0	6	2
50-54	0	1	5	3	0
55-59	0	1	2	5	1
60-64	0	1	5	1	1
65-69	1	1	1	1	0
70 +	0	0	1	0	0
Missing Data	0	0	0	0	0
Total Drivers	53	52	73	69	49

¹Values are based upon the year of the arrest.

Table 22: Driver Repeat DWI Arrests by Age Group of Bloomfield Residents Throughout the State, 2013-2017

Age Groups	Driver Repeat DWI Arrests ¹				
	2013	2014	2015	2016	2017
15-19	0	0	1	0	2
20-24	5	4	6	2	6
25-29	7	17	11	6	11
30-34	5	9	12	7	8
35-39	9	9	6	7	8
40-44	4	11	5	4	9
45-49	3	5	8	6	4
50-54	7	8	3	3	4
55-59	3	2	6	1	3
60-64	0	2	1	4	2
65-69	1	1	1	0	0
70 +	0	0	1	0	0
Missing Data	0	0	0	0	0
Total Drivers	44	68	61	40	57

¹Values are based upon the year of the arrest.

Table 23: Driver First DWI Convictions by Age Group of Bloomfield Residents Throughout the State, 2013-2017

Age Groups	Driver First DWI Convictions ¹				
	2013	2014	2015	2016	2017
15-19	1	1	4	5	2
20-24	13	13	11	11	7
25-29	7	11	11	16	7
30-34	10	7	6	10	3
35-39	7	1	4	2	5
40-44	2	3	2	2	5
45-49	3	4	1	1	3
50-54	3	2	2	3	2
55-59	1	0	2	0	1
60-64	0	0	6	0	0
65-69	0	0	0	0	1
70 +	0	0	0	1	0
Missing Data	0	0	0	0	0
Total Drivers	47	42	49	51	36

¹Values are based upon the year of the conviction.

Table 24: Driver Repeat DWI Convictions by Age Group of Bloomfield Residents Throughout the State, 2013-2017

Age Groups	Driver Repeat DWI Convictions ¹				
	2013	2014	2015	2016	2017
15-19	0	0	0	0	0
20-24	4	1	4	0	1
25-29	5	7	8	7	2
30-34	2	9	4	8	4
35-39	8	3	6	5	5
40-44	5	5	5	3	5
45-49	3	4	3	6	4
50-54	1	9	1	6	2
55-59	1	3	3	2	0
60-64	0	0	0	1	2
65-69	0	1	1	1	0
70 +	0	0	0	0	0
Missing Data	0	0	0	0	0
Total Drivers	29	42	35	39	25

¹Values are based upon the year of the conviction.

**Table 25: Court Disposition of DWI Arrests for the State
and of Bloomfield Residents Throughout the State, 2017**

Court Disposition of DWI Arrest ¹	Bloomfield	Statewide	Percent of Statewide
Total DWI Arrests	106	10,501	1.0%
DWI Arrests Resulting in Convictions	57	5,533	1.0%
DWI Arrests Resulting in Dismissals ²	14	1,426	1.0%
DWI Arrests Awaiting Disposition	35	3,542	1.0%

¹ These are the number of DWI arrests in 2017 and whether the case resulted in a conviction or dismissal, or is still awaiting court disposition, as reported in the NM MVD Citation Tracking System (CTS) as of February 2019.

² For this table, a very small number of "not guilty" rulings may be included in the category Dismissals.

**Table 26: Average Number of Days from Date of DWI Arrest to Date of Court Disposition
for the State and of Bloomfield Residents Throughout the State, 2017**

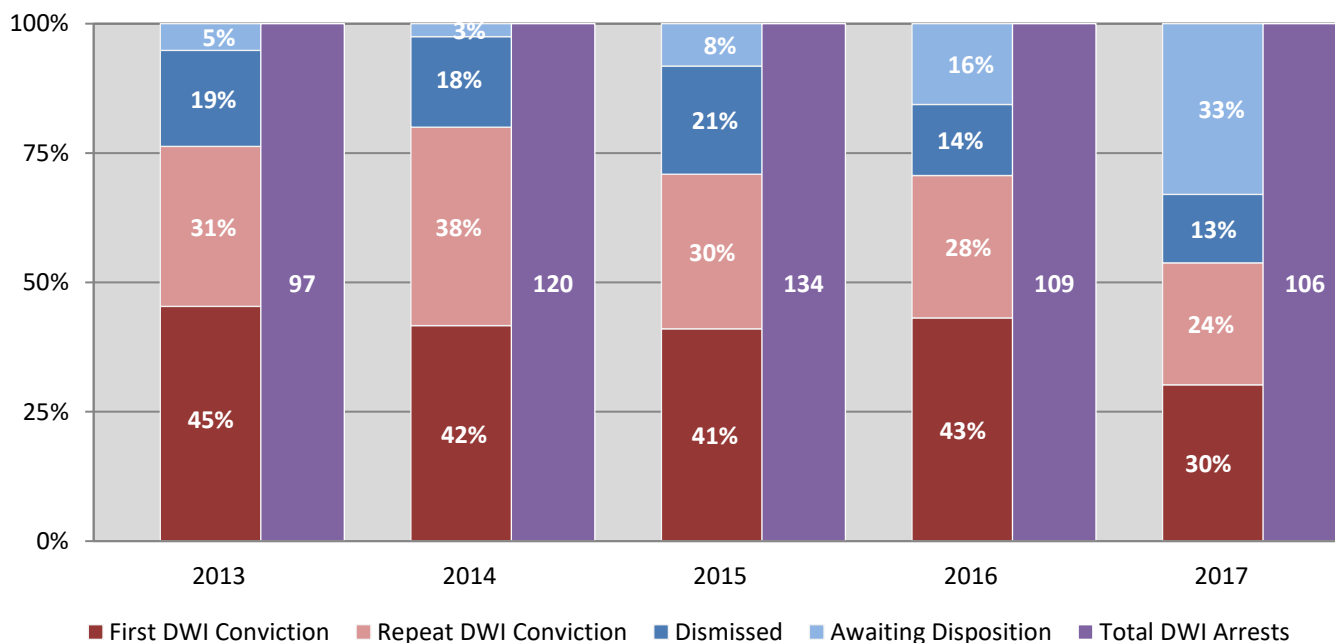
Court Disposition	Average Number of Days		Deviation from Statewide Average
	Bloomfield	Statewide	
DWI Conviction	199	166	33
DWI Dismissal	251	175	76

Table 27: Court Disposition of DWI Arrests of Bloomfield Residents Throughout the State, 2013-2017

Year of DWI Arrest ¹	Court Disposition				Total DWI Arrests
	First DWI Conviction	Repeat DWI Conviction	Dismissed	Awaiting Disposition	
2013	44	30	18	5	97
2014	50	46	21	3	120
2015	55	40	28	11	134
2016	47	30	15	17	109
2017	32	25	14	35	106

¹ Values are based upon the year of the arrest.

Figure 14: Court Dispositions by Percentage of DWI Arrests of Bloomfield Residents Throughout the State, 2013-2017



*Table 27 contains the values used to calculate percentages shown in Figure 14.