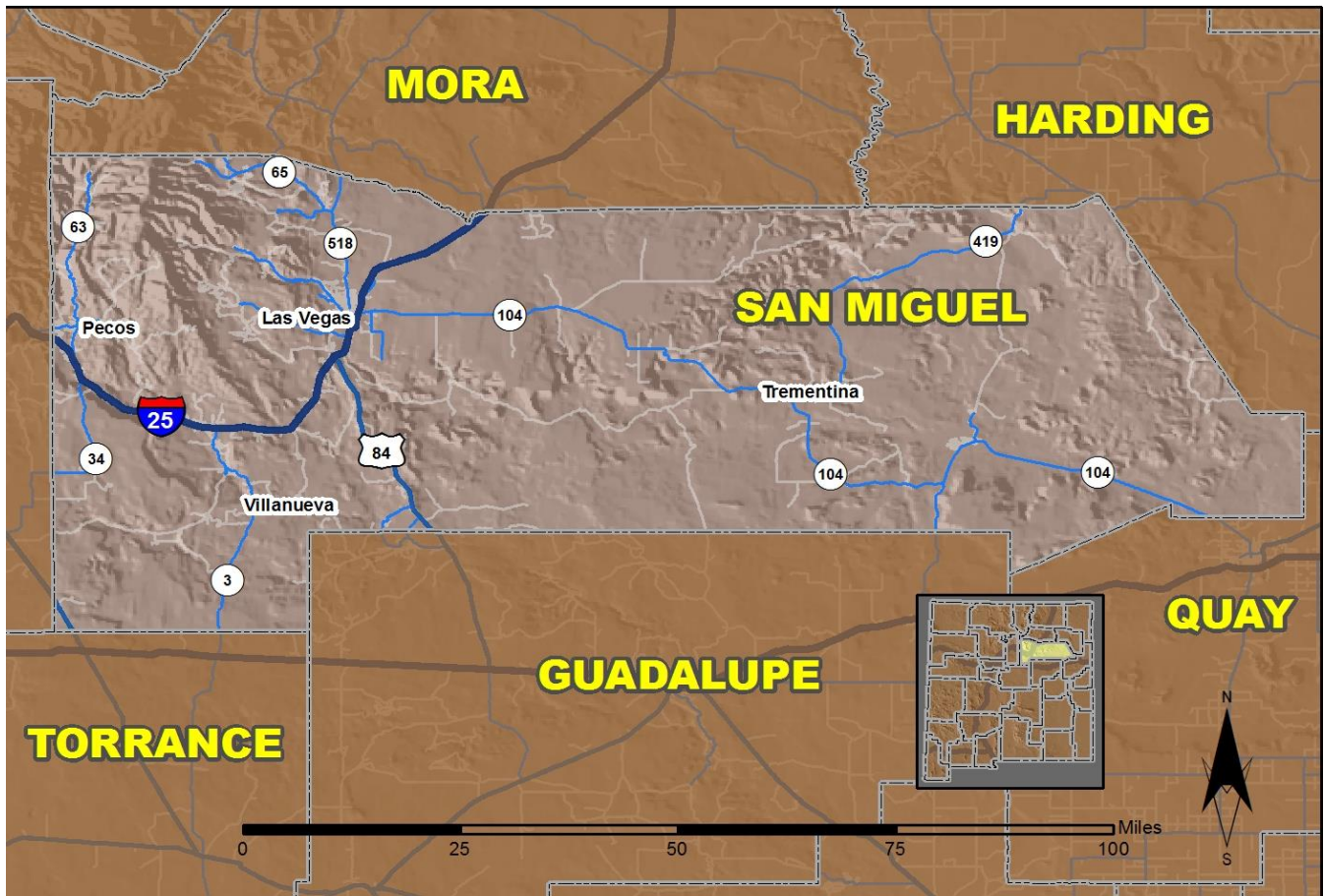


2017 Community Report

Las Vegas



Produced for the New Mexico Department of Transportation,
Traffic Safety Division, Traffic Records Bureau,
Under Contract 6093 by the University of New Mexico,
Geospatial and Population Studies, Traffic Research Unit

Distributed in compliance with New Mexico Statute 66-7-214
as a reference source regarding New Mexico traffic crashes

For the purposes of this report, data are compiled by the University of New Mexico, Geospatial and Population Studies, Traffic Research Unit (TRU), on behalf of the New Mexico Department of Transportation (NMDOT). Data in this report may differ from that in other data sources, such as the Federal Fatality Analysis Reporting System (FARS), due to the timing of publications and rules for how data are compiled and maintained in Federal vs. State databases. If you have questions regarding this report, please contact the Traffic Safety Division at 505-827-0427.

<http://tru.unm.edu/Crash-Reports/Community-Reports/>

Definitions

Aggravated DWI – A driver arrested for 1) driving with a BAC of 0.16 or higher, 2) driving under the influence of alcohol or drugs and causing bodily injury to a human being as a result, or 3) driving under the influence of alcohol or drugs and refusing to submit to a BAC test at the time of arrest for DWI.

Alcohol-involved Crash – A crash for which the Uniform Crash Report indicated that 1) a DWI citation was issued, 2) alcohol was a contributing factor, or 3) a person in control of a vehicle (including a pedestrian or pedalcyclist) was suspected of being under the influence of alcohol.

Alcohol-involved Driver – A person in control of a vehicle who was cited for DWI or indicated on the Uniform Crash Report as being either suspected or determined by testing to be under the influence of alcohol. There can be multiple alcohol-involved drivers in a single alcohol-involved crash.

Crash – A reported incident on a public roadway involving one or more motor vehicles that resulted in death, personal injury, or at least \$500 in property damage. Crashes on private property (such as a parking lot) are not included.

DWI Arrest (Citation) – In this report, a DWI arrest (a.k.a. a DWI citation) is a driver arrested for either DWI or aggravated DWI. New Mexico’s legal limit for presumption of driving while intoxicated (DWI) is 0.08 for non-commercial drivers older than 21 years of age, 0.04 for commercial vehicle drivers, and 0.02 for drivers younger than 21 years of age.

DWI Conviction – A driver convicted of driving under the intoxicating influence of alcohol, narcotics, or pathogenic drugs, including aggravated DWI.

Fatal Crash – A crash in which at least one person was killed. More than one person can be killed in a single fatal crash.

Fatalities – The number of people killed in a crash. The terms “killed” and “deaths” are synonymous with “fatalities.” A fatality is crash-related if it occurs at the time of the crash or if the person(s) involved in the crash dies within 30 days.

Injury Crash – A reported crash in which at least one person was injured. Injury crashes involve at least one suspected serious injury (Class A), suspected minor injury (Class B), or possible injury (Class C). Fatal crashes are not included.

Missing Data – An indication that the applicable field on the UCR form was left blank or contained an invalid code. Starting with crashes that occurred in 2012, improvements in the identification of missing data in the NMDOT crash database led to an increase in the reported amount of missing data.

Pedalcyclist – A person riding a mechanism of transport that is powered solely by pedals (a.k.a. bicyclist).

Pedestrian – A person on foot, walking, running, jogging, hiking, sitting or lying down who is involved in a motor vehicle traffic crash.

Sources

Crash Data – New Mexico Department of Transportation, Traffic Safety Division, Traffic Records Bureau, Traffic Crash Database, as of the report date below. Crash data are compiled using NMDOT Uniform Crash Reports (UCR), submitted by law enforcement agencies in the state, for any incident on a public roadway involving one or more motor vehicles that resulted in death, injury, or at least \$500 in property damage. These reports are processed by the NMDOT Traffic Records Bureau and analyzed by the University of New Mexico, Geospatial and Population Studies, Traffic Research Unit (TRU).

DWI Citation Tracking System (CTS) – New Mexico Taxation and Revenue Department (NM TRD), Motor Vehicle Division (MVD), DWI Citation Tracking System (CTS), as of February 2019. Repeat offenders are identified by the combination of account key, arrest date, and citation number. County data are based upon the county where the arrest took place. City data are based upon the city where the offender resides.

Urban Areas – New Mexico Department of Transportation, Asset Management and Planning, 2010 U.S. Census Urbanized Area Boundaries, NMDOT-Adjusted, and U.S. Census Urban Clusters, August 21, 2013. In crashes before 2013, “urban” was defined as a town or city with a population of at least 2,500 people.

**Table 1: Total Crashes and Alcohol-involved Crashes by
Crash Severity in Las Vegas, 2008-2017**

Year	Total Crashes				Alcohol-involved Crashes			
	Fatal	Injury	Property Damage Only	Total	Fatal	Injury	Property Damage Only	Total
2008	5	70	209	284	3	11	11	25
2009	1	65	269	335	1	5	11	17
2010	2	64	239	305	1	6	13	20
2011	2	58	319	379	1	7	17	25
2012	3	53	251	307	3	4	15	22
2013	0	59	208	267	0	11	16	27
2014	1	77	246	324	1	8	9	18
2015	1	91	283	375	0	9	11	20
2016	1	87	249	337	1	5	9	15
2017	0	57	270	327	0	4	12	16

**Figure 1: Alcohol-involved Fatal and Injury Crashes Compared with
Non-alcohol-involved Fatal and Injury Crashes in Las Vegas, 2008-2017**

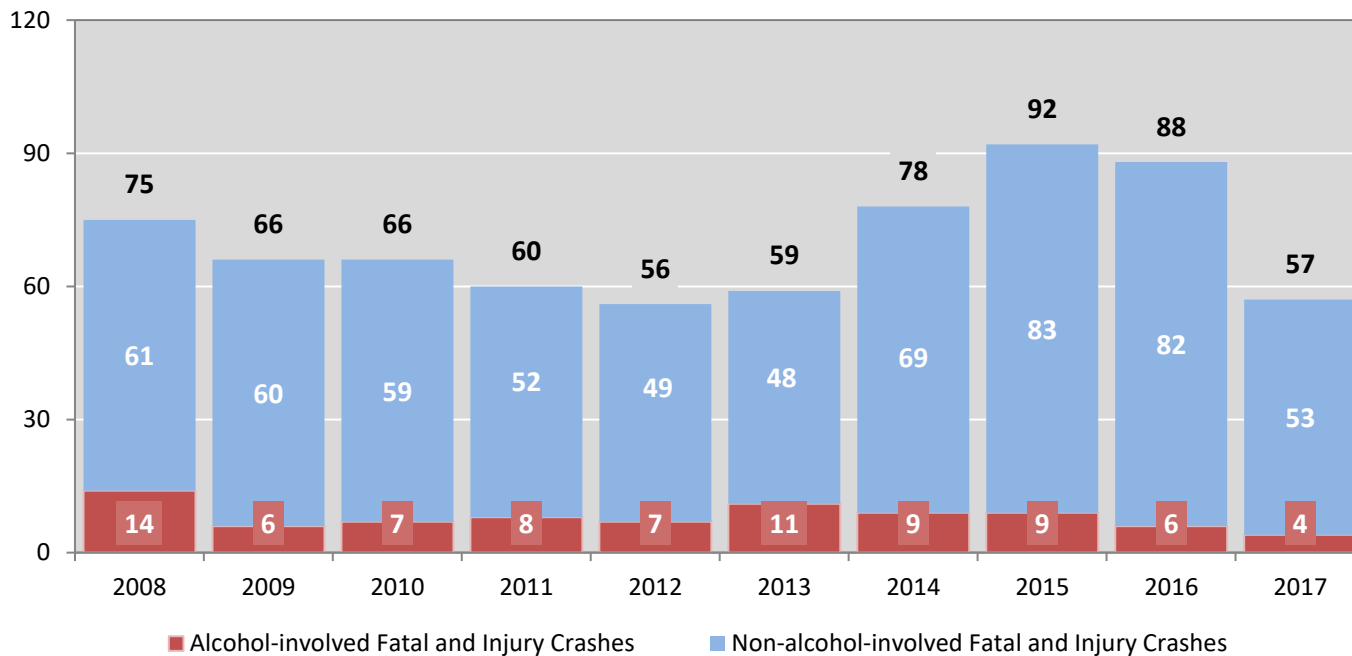


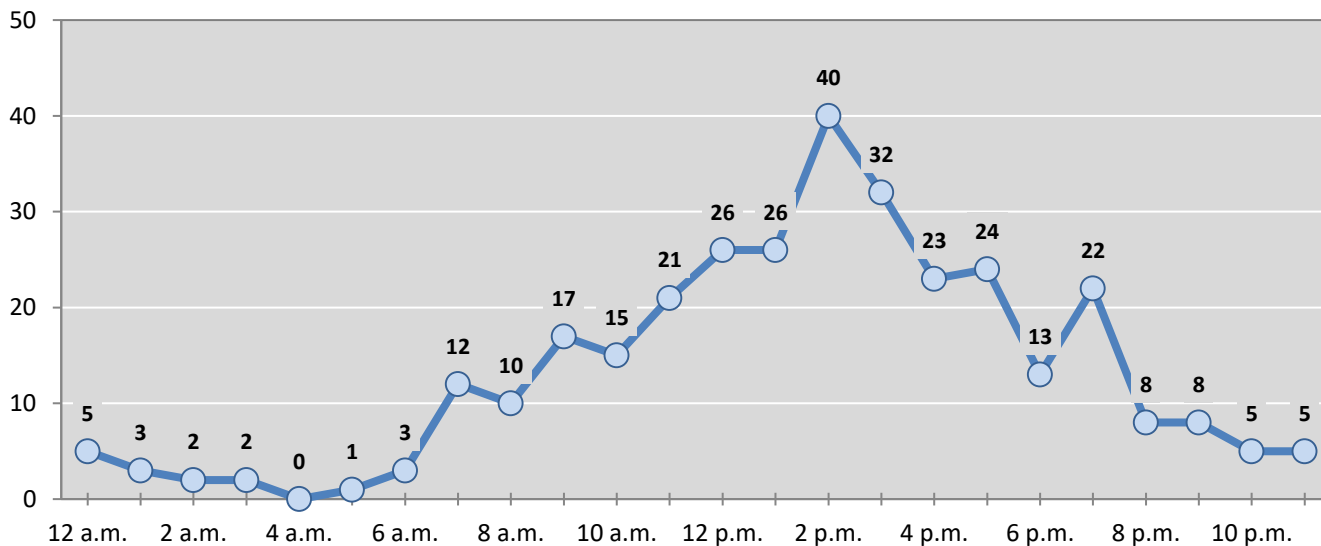
Table 2: Crashes by Month in Las Vegas, 2013-2017

Month	Crashes					5-Year Average
	2013	2014	2015	2016	2017	
January	22	21	36	33	26	28
February	21	20	25	30	22	24
March	19	29	38	29	23	28
April	16	28	24	21	31	24
May	27	32	24	29	29	28
June	20	26	25	23	22	23
July	26	23	30	29	25	27
August	25	15	24	27	31	24
September	32	23	45	33	32	33
October	26	33	23	33	31	29
November	13	43	41	18	25	28
December	20	31	40	32	30	31
Total Crashes	267	324	375	337	327	326

Table 3: Alcohol-involved Crashes by Month in Las Vegas, 2013-2017

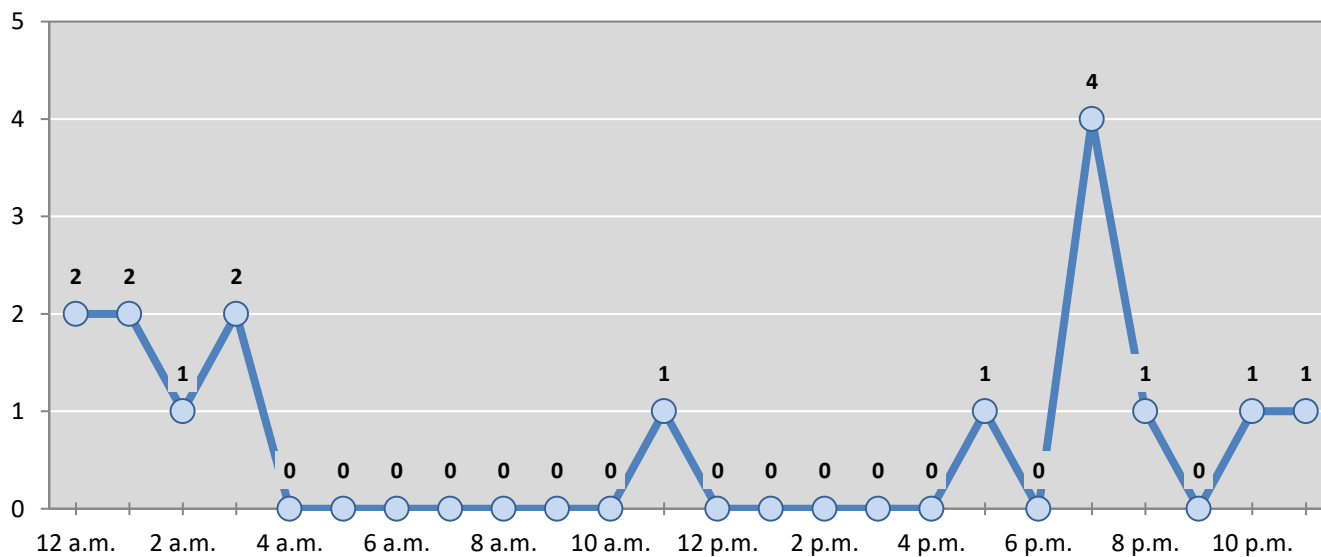
Month	Alcohol-involved Crashes					5-Year Average
	2013	2014	2015	2016	2017	
January	4	3	1	3	1	2
February	2	2	1	1	0	1
March	0	1	4	2	2	2
April	2	3	1	1	0	1
May	4	2	2	0	3	2
June	2	0	0	3	1	1
July	5	2	3	0	1	2
August	3	0	1	1	0	1
September	1	1	1	1	4	2
October	2	1	3	1	1	2
November	0	2	1	1	1	1
December	2	1	2	1	2	2
Total Crashes	27	18	20	15	16	19

Figure 2: Crashes by Hour in Las Vegas, 2017



* In 2017, Las Vegas had 4 crashes for which hour data were missing.

Figure 3: Alcohol-involved Crashes by Hour in Las Vegas, 2017



* In 2017, Las Vegas had 0 alcohol-involved crashes for which hour data were missing.

Table 4: Alcohol-involved Crashes by Day of Week in Las Vegas, 2013-2017

Day of Week	Alcohol-involved Crashes					5-Year Average
	2013	2014	2015	2016	2017	
Sunday	7	0	0	1	4	2
Monday	5	3	2	2	2	3
Tuesday	4	1	3	1	1	2
Wednesday	4	2	3	3	2	3
Thursday	2	4	3	3	1	3
Friday	3	2	5	3	2	3
Saturday	2	6	4	2	4	4
Total Crashes	27	18	20	15	16	19

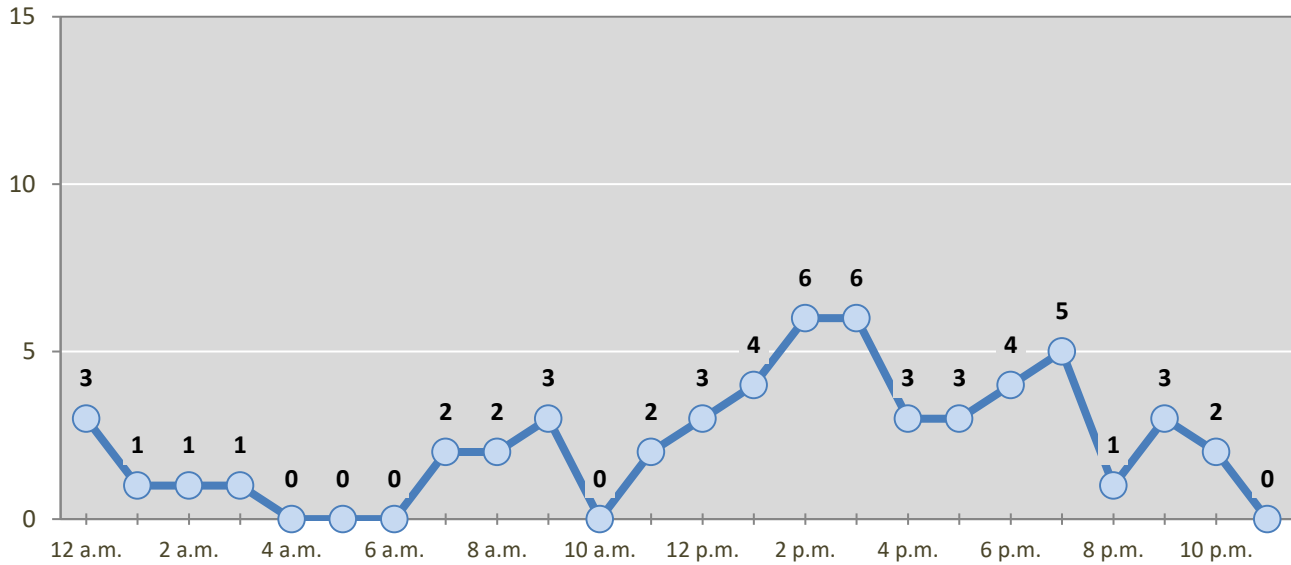
Table 5: Fatal and Injury Crashes by Day of Week in Las Vegas, 2013-2017

Day of Week	Fatal and Injury Crashes					5-Year Average
	2013	2014	2015	2016	2017	
Sunday	5	9	6	11	8	8
Monday	13	10	18	10	8	12
Tuesday	9	18	12	12	10	12
Wednesday	8	8	21	15	10	12
Thursday	11	7	14	12	9	11
Friday	10	16	14	16	10	13
Saturday	3	10	7	12	2	7
Total Crashes	59	78	92	88	57	75

Table 6: Pedestrian and Pedalcyclist Crashes by Day of Week in Las Vegas, 2013-2017

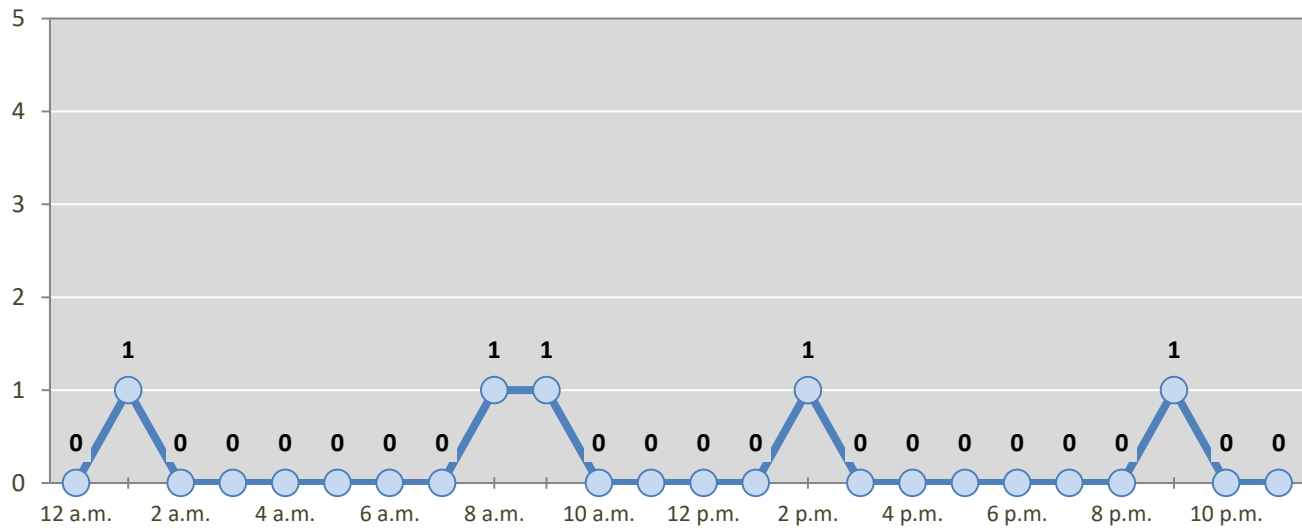
Day of Week	Pedestrian and Pedalcyclist Crashes					5-Year Average
	2013	2014	2015	2016	2017	
Sunday	1	1	0	1	0	1
Monday	2	0	1	0	3	1
Tuesday	1	0	1	0	1	1
Wednesday	3	2	0	2	0	1
Thursday	0	1	1	1	1	1
Friday	3	1	1	1	1	1
Saturday	0	1	0	2	0	1
Total Crashes	10	6	4	7	6	7

Figure 4: Fatal and Injury Crashes by Hour in Las Vegas, 2017



* In 2017, Las Vegas had 2 crashes for which hour data were missing.

Figure 5: Pedestrian and Pedalcyclist Crashes by Hour in Las Vegas, 2017



* In 2017, Las Vegas had 1 crashes for which hour data were missing.

Table 7: Severity of Injuries to People in Crashes by Rural and Urban Location in Las Vegas, 2017

Urban and Rural Locations by Alcohol-involvement	People in Crashes by Severity of Injuries					Total People
	Fatalities (Class K)	Suspected Serious Injuries (Class A)	Suspected Minor Injuries (Class B)	Possible Injuries (Class C)	No Apparent Injuries (Class O)	
People in Alcohol-involved Crashes	0	0	2	8	24	34
Urban	0	0	2	8	24	34
Rural Non-Interstate	0	0	0	0	0	0
Rural Interstate	0	0	0	0	0	0
People in Crashes	0	1	16	60	675	752
Urban	0	1	16	60	675	752
Rural Non-Interstate	0	0	0	0	0	0
Rural Interstate	0	0	0	0	0	0
Percent in Alcohol-involved Crashes	0%	0%	13%	13%	4%	5%

Table 8: Total Crashes by Roadway System and Crash Severity in Las Vegas, 2013-2017

Crash Severity by System	Crashes by Year					5-Year Average
	2013	2014	2015	2016	2017	
Total Rural Interstate	10	9	0	0	0	4
Fatal Crash	0	0	0	0	0	0
Injury Crash	4	7	0	0	0	2
Property Damage Only Crash	6	2	0	0	0	2
Total Rural Non-Interstate	15	18	0	0	0	7
Fatal Crash	0	1	0	0	0	0
Injury Crash	5	3	0	0	0	2
Property Damage Only Crash	10	14	0	0	0	5
Total Urban	242	297	375	337	327	315
Fatal Crash	0	0	1	1	0	0
Injury Crash	50	67	91	87	57	70
Property Damage Only Crash	192	230	283	249	270	245

Table 9: Total Crashes by Crash Classification in Las Vegas, 2013-2017

Crash Classification	Total Crashes by Year					5-Year Average
	2013	2014	2015	2016	2017	
Animal	5	9	5	5	3	5
Fixed Object	13	36	28	27	33	27
Other (Non-Collision)	2	5	2	3	3	3
Other (Object)	10	9	11	5	3	8
Other Vehicle	170	220	277	233	234	227
Overturn/Rollover	18	14	4	5	3	9
Parked Vehicle	29	15	24	20	40	26
Pedalcyclist	2	3	2	1	1	2
Pedestrian	7	3	3	6	5	5
Railroad Train	0	0	0	0	0	0
Rollover	0	0	3	2	2	1
Vehicle on Other Road	5	3	4	3	0	3
Missing Data	6	7	12	27	0	10
Total Crashes	267	324	375	337	327	326

Table 10: Vehicles in Crashes by Vehicle Type in Las Vegas, 2013-2017

Vehicle Type ¹	Vehicles in Crashes by Vehicle Type					5-Year Average
	2013	2014	2015	2016	2017	
Bus	3	6	0	2	3	3
Motorcycle	9	4	8	5	13	8
Passenger	224	258	334	305	319	288
Pedalcyclist	3	3	2	1	1	2
Pedestrian	8	3	2	7	6	5
Pickup	103	95	120	126	115	112
Semi	6	12	11	9	9	9
Van/SUV/4WD	62	97	88	110	92	90
Other Vehicle	25	29	49	8	6	23
Missing Data	53	99	103	69	57	76
Total Vehicles	496	606	717	642	621	616

¹ Pedestrians and pedalcyclists are counted as non-motorized vehicles, when involved in a crash with a motor vehicle. See Page 17 for data on drivers of non-motorized vehicles in crashes (i.e. pedestrians and pedalcyclists).

Table 11: Motor Vehicle Drivers in Crashes by Vehicle Type and Age Group in Las Vegas, 2017

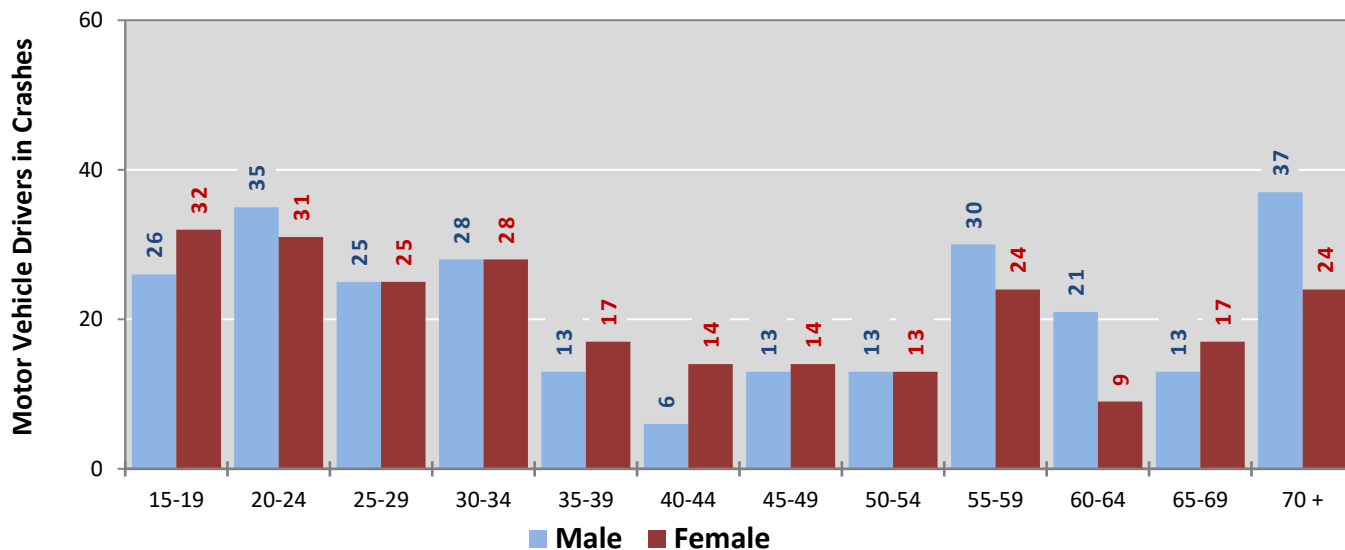
Age Groups	Motor Vehicle ¹ Drivers by Vehicle Type and Age Group								Total Drivers
	Bus	Motor-cycle	Passenger	Pickup	Semi	Van 4WD SUV	Other Vehicle	Missing Data	
15-19	0	1	34	12	1	7	1	2	58
20-24	0	3	42	7	0	10	0	4	66
25-29	0	0	36	5	1	6	0	2	50
30-34	0	2	33	10	2	9	0	1	57
35-39	0	0	13	8	1	7	0	1	30
40-44	0	0	10	5	0	2	2	1	20
45-49	1	1	15	7	1	2	0	0	27
50-54	0	0	17	4	2	3	0	0	26
55-59	1	1	27	12	0	9	0	4	54
60-64	0	0	8	11	0	9	0	2	30
65-69	1	0	18	4	0	5	0	2	30
70 +	0	0	29	14	0	16	1	1	61
Missing Data	0	5	37	16	1	7	2	37	105
Total Drivers	3	13	319	115	9	92	6	57	614

Table 12: Alcohol-involved Motor Vehicle Drivers in Crashes by Vehicle Type and Age Group in Las Vegas, 2017

Age Groups	Alcohol-involved Motor Vehicle ¹ Drivers by Vehicle Type and Age Group								Total Drivers
	Bus	Motor-cycle	Passenger	Pickup	Semi	Van 4WD SUV	Other Vehicle	Missing Data	
15-19	0	0	0	0	0	0	0	0	0
20-24	0	0	4	0	0	0	0	0	4
25-29	0	0	3	0	0	0	0	0	3
30-34	0	0	2	0	0	1	0	0	3
35-39	0	0	0	1	0	0	0	0	1
40-44	0	0	0	0	0	0	0	0	0
45-49	0	0	0	0	0	0	0	0	0
50-54	0	0	0	0	0	0	0	0	0
55-59	0	0	1	0	0	1	0	0	2
60-64	0	0	0	0	0	0	0	0	0
65-69	0	0	0	0	0	0	0	0	0
70 +	0	0	0	0	0	0	0	0	0
Missing Data	0	0	0	0	0	1	1	0	2
Total Drivers	0	0	10	1	0	3	1	0	15

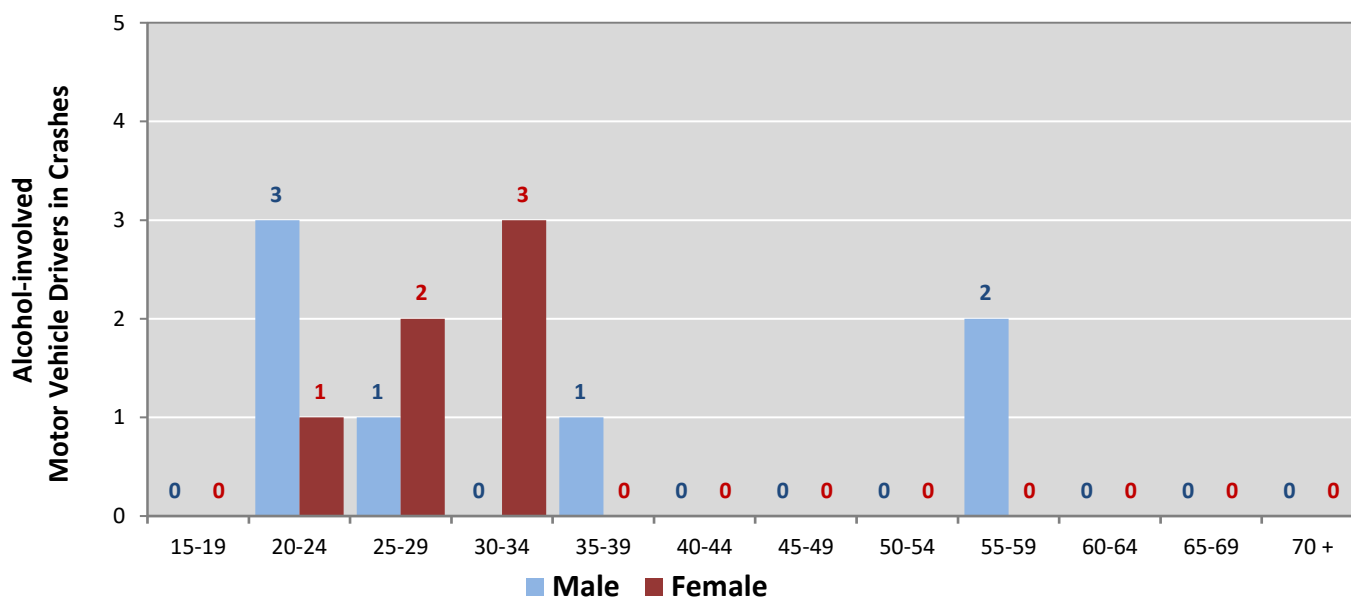
¹ See Page 17 for data on drivers of non-motorized vehicles in crashes (i.e. pedestrians and pedalcyclists).

Figure 6: Motor Vehicle Drivers in Crashes by Age Group and Sex in Las Vegas, 2017



* In 2017, Las Vegas had 106 drivers in crashes for which age or sex data were missing.

Figure 7: Alcohol-involved Motor Vehicle Drivers in Crashes by Age Group and Sex in Las Vegas, 2017



* In 2017, Las Vegas had 2 drivers in crashes for which age or sex data were missing.

**Table 13: Alcohol-involved Motor Vehicle Drivers Under 21
(Ages 15-20) in Crashes in Las Vegas, 2013-2017**

Age ¹	Year					5-Year Total
	2013	2014	2015	2016	2017	
15	0	0	0	0	0	0
16	0	0	0	0	0	0
17	0	1	0	0	0	1
18	0	0	0	0	0	0
19	0	0	2	0	0	2
20	3	0	2	1	0	6
Total Drivers	3	1	4	1	0	9

**Table 14: Motor Vehicle Drivers Under 21 (Ages 15-20) in Crashes
by Age, Sex and Alcohol-involvement in Las Vegas, 2017**

Age ¹	Total Drivers				Alcohol-involved Drivers			
	Sex		Total Drivers	Percent of Total	Sex		Total Drivers	Percent of Total
	Male	Female			Male	Female		
15	2	1	3	4%	0	0	0	0%
16	7	6	13	18%	0	0	0	0%
17	7	5	12	17%	0	0	0	0%
18	3	9	12	17%	0	0	0	0%
19	7	11	18	25%	0	0	0	0%
20	6	7	13	18%	0	0	0	0%
Total Drivers	32	39	71	100%	0	0	0	0%

¹ For analysis of drivers under age 21, when the driver age or sex are not identified on the crash report (typically hit-and-run drivers), the driver data are considered unreliable and are excluded from the analysis.

**Table 15: Frequency of Contributing Factors in Crashes
by Crash Severity in Las Vegas, 2017**

Contributing Factors	Frequency of Contributing Factor ¹ by Crash Severity			
	Frequency in Fatal Crashes	Frequency in Injury Crashes	Frequency in Property Damage Only Crashes	Frequency in All Crashes
Human	0	89	329	418
Driver Inattention	0	34	118	152
Failed to Yield Right of Way	0	10	48	58
Following Too Closely	0	7	31	38
Improper Backing	0	0	27	27
Excessive Speed	0	10	15	25
Other Improper Driving	0	5	20	25
Alcohol Involved	0	4	12	16
Avoid No Contact - Vehicle	0	3	12	15
Passed Stop Sign	0	6	9	15
Improper Overtaking	0	1	6	7
Made Improper Turn	0	1	6	7
Drove Left Of Center	0	2	3	5
Improper Lane Change	0	2	3	5
Speed Too Fast for Conditions	0	0	5	5
Cell Phone	0	1	3	4
Disregarded Traffic Signal	0	1	3	4
Drug Involved	0	0	3	3
Avoid No Contact - Other	0	0	2	2
Pedestrian Error	0	2	0	2
Vehicle Skidded Before Brake	0	0	2	2
Driverless Moving Vehicle	0	0	1	1
Failed to Yield to Emergency Vehicle	0	0	0	0
Failed to Yield to Police Vehicle	0	0	0	0
High Speed Pursuit	0	0	0	0
Texting	0	0	0	0
Vehicle	0	1	3	4
Inadequate Brakes	0	0	2	2
Other Mechanical Defect	0	1	1	2
Defective Steering	0	0	0	0
Defective Tires	0	0	0	0
Environment	0	0	1	1
Road Defect	0	0	1	1
Low Visibility Due to Smoke	0	0	0	0
Traffic Control Not Functioning	0	0	0	0
Other	0	54	249	303
None	0	35	153	188
Other - No Driver Error	0	19	96	115

¹ Multiple contributing factors may be reported for any vehicle in a crash.

Table 16: People in Crashes by Crash Classification and Severity of Injuries in Las Vegas, 2017

Crash Classification	People in Crashes by Severity of Injuries					Total People
	Fatalities (Class K)	Suspected Serious Injuries (Class A)	Suspected Minor Injuries (Class B)	Possible Injuries (Class C)	No Apparent Injuries (Class O)	
Animal	0	0	0	0	5	5
Fixed Object	0	0	1	1	39	41
Other (Non-Collision)	0	0	2	0	1	3
Other (Object)	0	0	0	0	4	4
Other Vehicle	0	0	8	54	537	599
Overturn/Rollover	0	0	2	1	0	3
Parked Vehicle	0	0	0	0	79	79
Pedalcyclist	0	0	0	1	1	2
Pedestrian	0	1	1	3	8	13
Railroad Train	0	0	0	0	0	0
Rollover	0	0	2	0	1	3
Vehicle on Other Road	0	0	0	0	0	0
Missing Data	0	0	0	0	0	0
Total People	0	1	16	60	675	752

**Table 17: Killed or Injured Unbelted People in Crashes
by Sex and Age Group in Las Vegas, 2017**

Age Groups	Unbelted People Killed or Injured ^{1,2}				Total People
	Male	Percent of Male	Female	Percent of Female	
0-4	0	0%	0	0%	0
5-9	0	0%	0	0%	0
10-14	0	0%	0	0%	0
15-19	0	0%	0	0%	0
20-24	0	0%	1	50%	1
25-29	1	100%	1	50%	2
30-34	0	0%	0	0%	0
35-39	0	0%	0	0%	0
40-44	0	0%	0	0%	0
45-49	0	0%	0	0%	0
50-54	0	0%	0	0%	0
55-59	0	0%	0	0%	0
60-64	0	0%	0	0%	0
65-69	0	0%	0	0%	0
70 +	0	0%	0	0%	0
Missing Data	0	0%	0	0%	0
Total People	1	100%	2	100%	3

¹ People injured are in one of three categories: suspected serious injury, suspected minor injury, or possible injury.

² Excludes people in or on buses, heavy trucks, motorcycles, or ATVs.

**Figure 8: Seatbelt Use by People in Crashes with Fatal or
Suspected Serious Injuries in Las Vegas, 2013-2017**

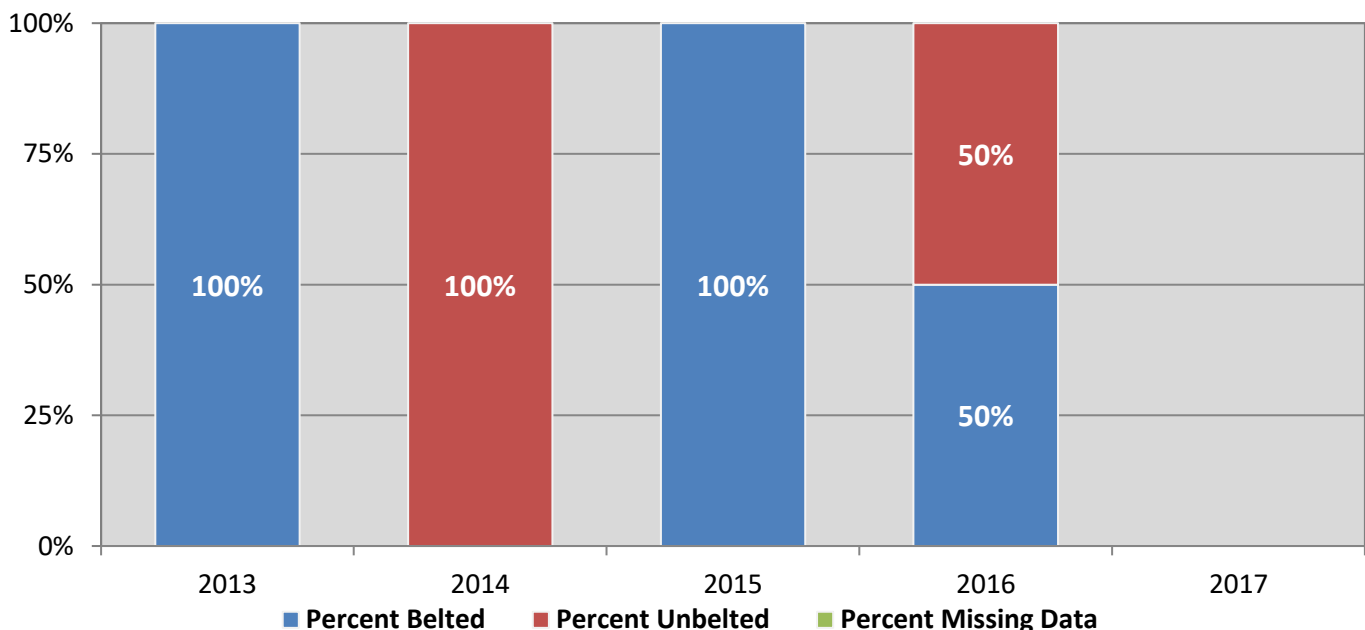
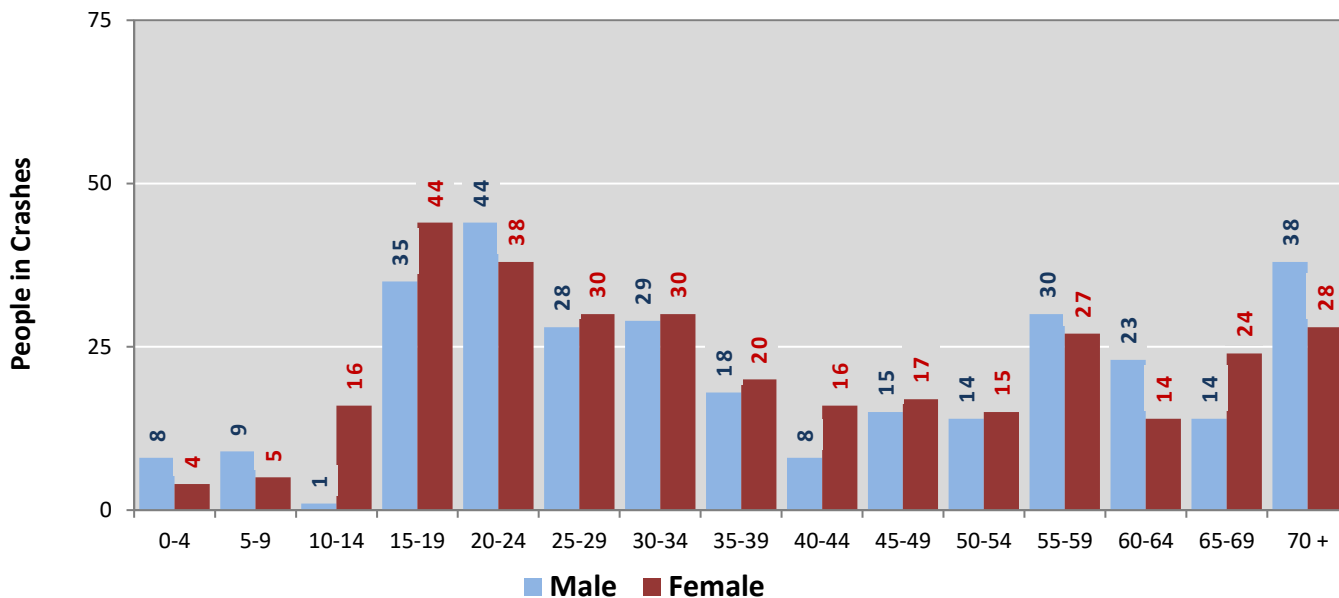
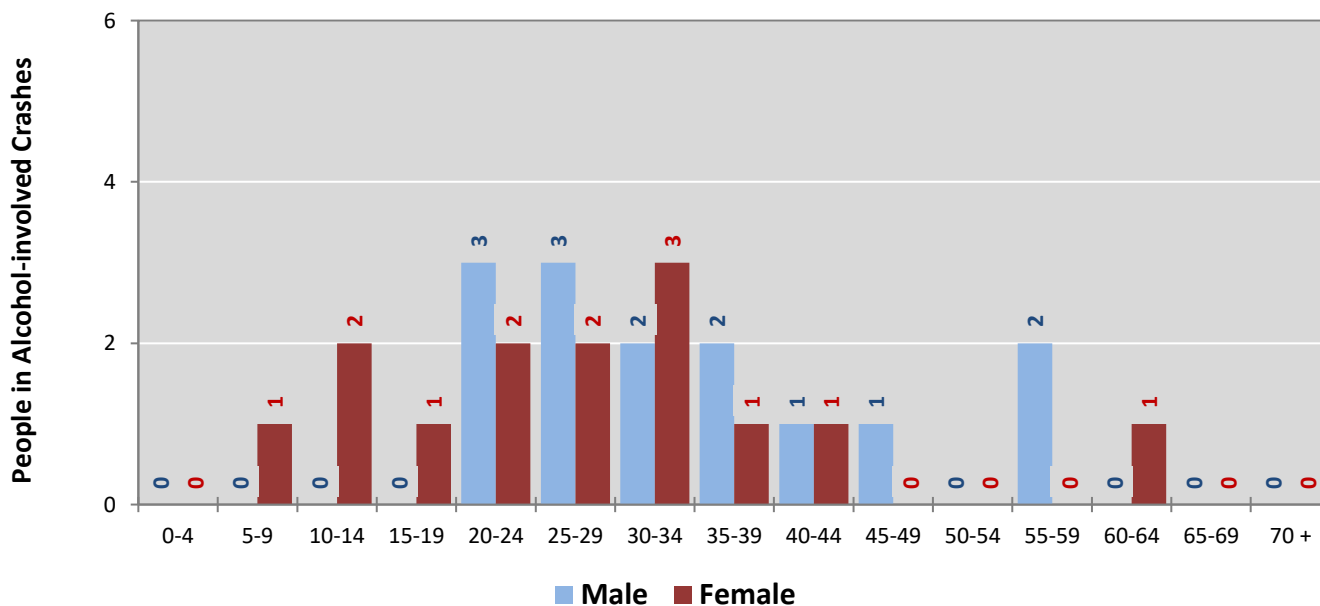


Figure 9: People in Crashes by Age Group and Sex in Las Vegas, 2017



* In 2017, Las Vegas had 110 people in crashes for which age or sex data were missing.

Figure 10: People in Alcohol-involved Crashes by Age Group and Sex in Las Vegas, 2017



* In 2017, Las Vegas had 6 people in alcohol-involved crashes for which age or sex data were missing.

**Table 18: Pedestrians and Pedalcyclists in Crashes
by Age Group in Las Vegas, 2013-2017**

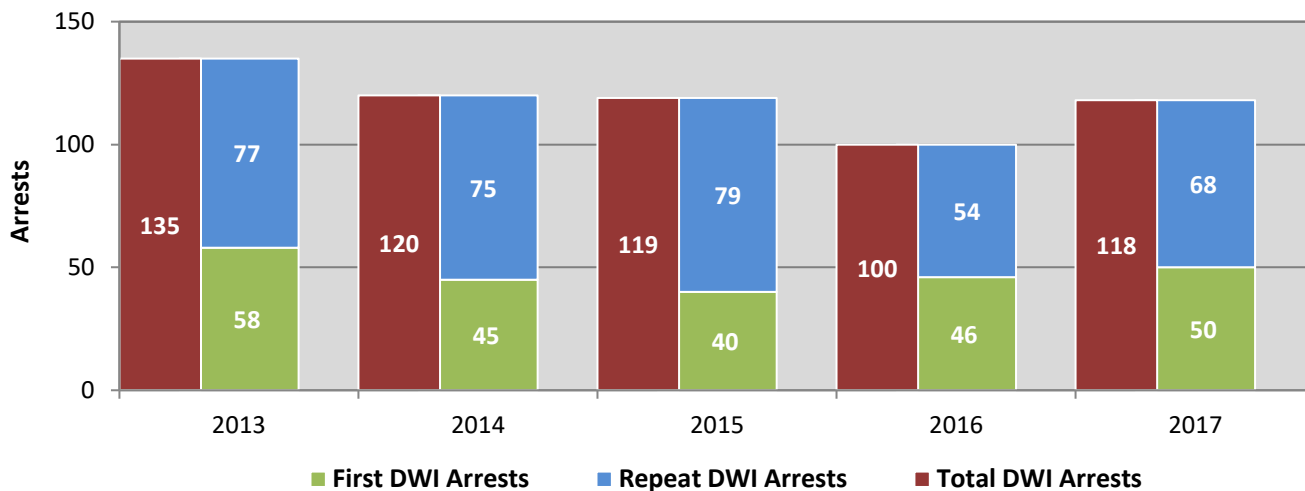
Age Groups	Pedestrians and Pedalcyclists ¹ in Crashes					5-Year Total People
	2013	2014	2015	2016	2017	
0-4	0	0	0	0	0	0
5-9	2	1	1	1	0	5
10-14	2	2	0	1	0	5
15-19	0	1	0	1	1	3
20-24	0	0	0	1	0	1
25-29	1	0	0	1	2	4
30-34	0	0	1	0	0	1
35-39	0	0	0	0	1	1
40-44	0	0	0	0	0	0
45-49	0	1	0	0	0	1
50-54	0	0	1	0	0	1
55-59	0	0	1	1	0	2
60-64	1	0	0	1	1	3
65-69	1	0	0	0	1	2
70 +	0	1	0	1	1	3
Missing Data	4	0	0	0	0	4
Total People	11	6	4	8	7	36

**Table 19: Pedestrians and Pedalcyclists in Crashes by Alcohol Involvement
and Severity of Injuries in Las Vegas, 2017**

Alcohol Involvement	Pedestrians and Pedalcyclists ¹ in Crashes					Total People
	Fatalities (Class K)	Suspected Serious Injuries (Class A)	Suspected Minor Injuries (Class B)	Possible Injuries (Class C)	No Apparent Injury (Class O)	
Total Pedalcyclists	0	0	0	1	0	1
Involved	0	0	0	0	0	0
Not Involved	0	0	0	1	0	1
Total Pedestrians	0	1	1	3	1	6
Involved	0	0	0	1	0	1
Not Involved	0	1	1	2	1	5
Total People	0	1	1	4	1	7

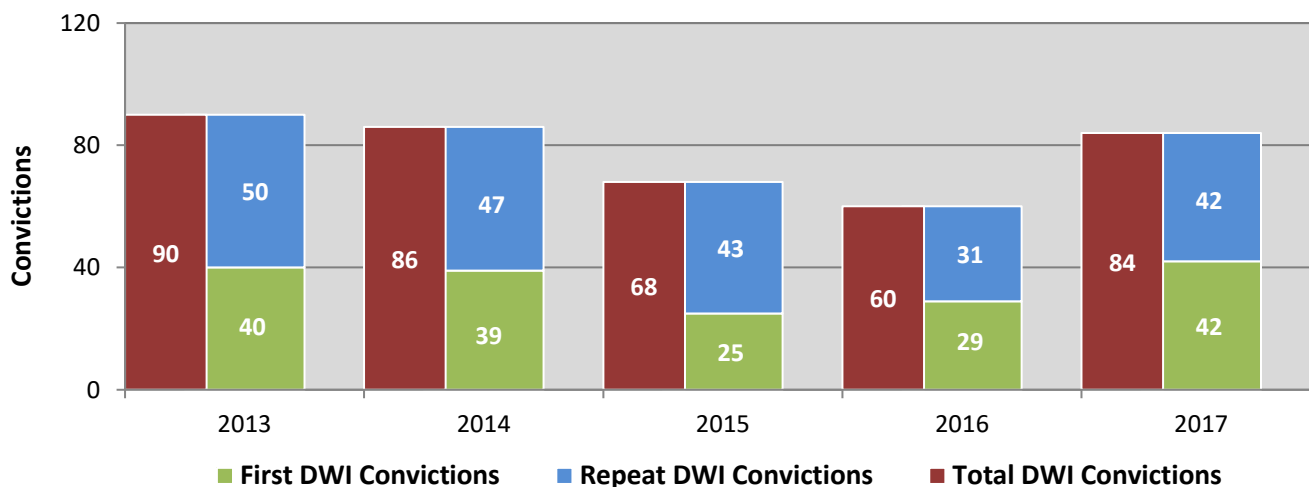
¹ Pedestrians and pedalcyclists are counted as non-motorized vehicles, when involved in a crash with a motor vehicle.

Figure 11: DWI Arrests of Las Vegas Residents Throughout the State, Showing First and Repeat DWI Arrests, 2013-2017



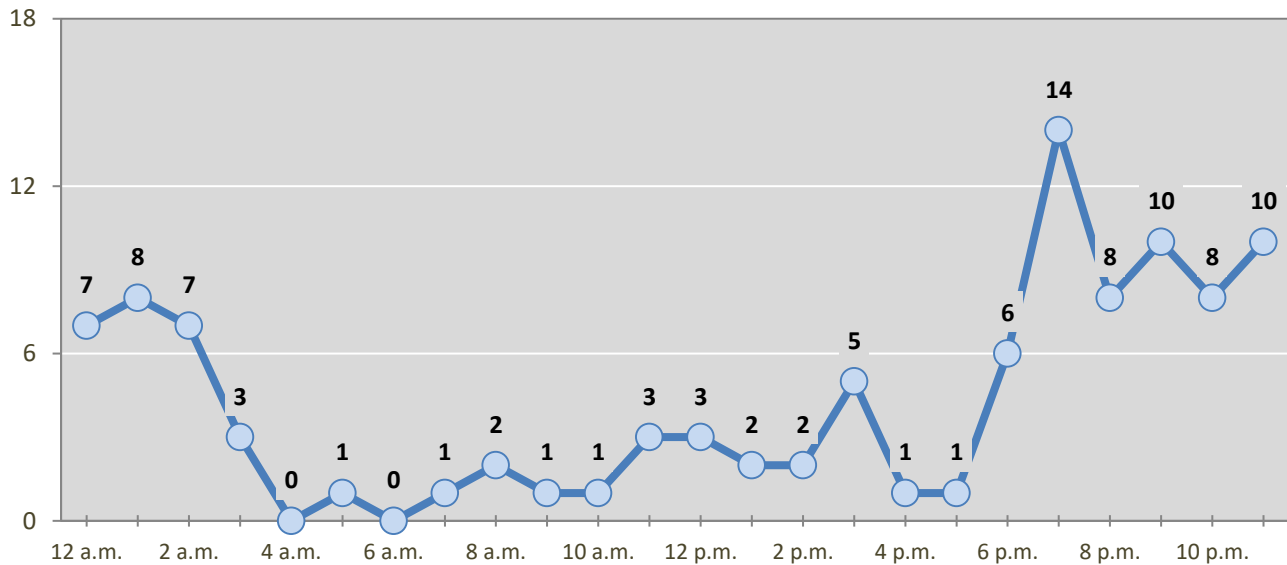
*Values are based upon the year of the arrest.

Figure 12: DWI Convictions of Las Vegas Residents Throughout the State, Showing First and Repeat DWI Convictions, 2013-2017



*Values are based upon the year of the conviction.

Figure 13: DWI Arrests by Hour of Las Vegas Residents Throughout the State, 2017



* In 2017, Las Vegas had 14 arrests for which hour data were missing.

Table 20: DWI Arrests by Day of Week of Las Vegas Residents Throughout the State, 2013-2017

Day of Week	Year					5-Year Average
	2013	2014	2015	2016	2017	
Sunday	23	19	22	19	20	21
Monday	20	8	17	14	11	14
Tuesday	15	9	16	8	8	11
Wednesday	13	15	10	9	15	12
Thursday	11	21	11	11	13	13
Friday	23	17	19	16	28	21
Saturday	30	31	24	23	23	26
Total Arrests	135	120	119	100	118	118

**Table 21: Driver First DWI Arrests by Age Group
of Las Vegas Residents Throughout the State, 2013-2017**

Age Groups	Driver First DWI Arrests ¹				
	2013	2014	2015	2016	2017
15-19	2	3	5	7	2
20-24	22	15	11	10	12
25-29	12	6	4	11	12
30-34	6	6	5	5	5
35-39	3	2	4	2	5
40-44	4	6	3	1	3
45-49	4	2	3	1	1
50-54	2	0	2	4	2
55-59	1	2	1	2	2
60-64	1	2	1	1	3
65-69	1	0	0	1	2
70 +	0	1	1	1	1
Missing Data	0	0	0	0	0
Total Drivers	58	45	40	46	50

¹Values are based upon the year of the arrest.

**Table 22: Driver Repeat DWI Arrests by Age Group
of Las Vegas Residents Throughout the State, 2013-2017**

Age Groups	Driver Repeat DWI Arrests ¹				
	2013	2014	2015	2016	2017
15-19	0	0	2	0	0
20-24	5	7	11	2	2
25-29	11	13	5	5	10
30-34	10	11	20	5	8
35-39	10	11	9	9	12
40-44	11	10	9	2	7
45-49	14	6	7	14	6
50-54	6	6	5	4	13
55-59	5	4	5	6	3
60-64	1	3	4	3	4
65-69	4	4	1	3	2
70 +	0	0	1	1	1
Missing Data	0	0	0	0	0
Total Drivers	77	75	79	54	68

¹Values are based upon the year of the arrest.

**Table 23: Driver First DWI Convictions by Age Group
of Las Vegas Residents Throughout the State, 2013-2017**

Age Groups	Driver First DWI Convictions ¹				
	2013	2014	2015	2016	2017
15-19	4	1	1	2	2
20-24	16	14	9	6	13
25-29	7	2	5	8	5
30-34	3	7	2	4	5
35-39	3	3	2	2	4
40-44	1	7	2	2	3
45-49	2	3	1	3	0
50-54	2	0	0	1	4
55-59	0	1	2	0	2
60-64	1	0	1	0	2
65-69	0	1	0	0	0
70 +	1	0	0	1	2
Missing Data	0	0	0	0	0
Total Drivers	40	39	25	29	42

¹Values are based upon the year of the conviction.

**Table 24: Driver Repeat DWI Convictions by Age Group
of Las Vegas Residents Throughout the State, 2013-2017**

Age Groups	Driver Repeat DWI Convictions ¹				
	2013	2014	2015	2016	2017
15-19	0	0	1	0	0
20-24	3	5	5	3	3
25-29	7	12	1	5	3
30-34	6	6	15	0	5
35-39	7	3	5	4	6
40-44	4	6	7	1	5
45-49	10	4	5	9	7
50-54	6	5	1	4	6
55-59	3	1	0	1	3
60-64	2	1	3	3	2
65-69	2	4	0	1	2
70 +	0	0	0	0	0
Missing Data	0	0	0	0	0
Total Drivers	50	47	43	31	42

¹Values are based upon the year of the conviction.

Table 25: Court Disposition of DWI Arrests for the State and of Las Vegas Residents Throughout the State, 2017

Court Disposition of DWI Arrest ¹	Las Vegas	Statewide	Percent of Statewide
Total DWI Arrests	118	10,501	1.1%
DWI Arrests Resulting in Convictions	79	5,533	1.4%
DWI Arrests Resulting in Dismissals ²	12	1,426	0.8%
DWI Arrests Awaiting Disposition	27	3,542	0.8%

¹ These are the number of DWI arrests in 2017 and whether the case resulted in a conviction or dismissal, or is still awaiting court disposition, as reported in the NM MVD Citation Tracking System (CTS) as of February 2019.

² For this table, a very small number of "not guilty" rulings may be included in the category Dismissals.

Table 26: Average Number of Days from Date of DWI Arrest to Date of Court Disposition for the State and of Las Vegas Residents Throughout the State, 2017

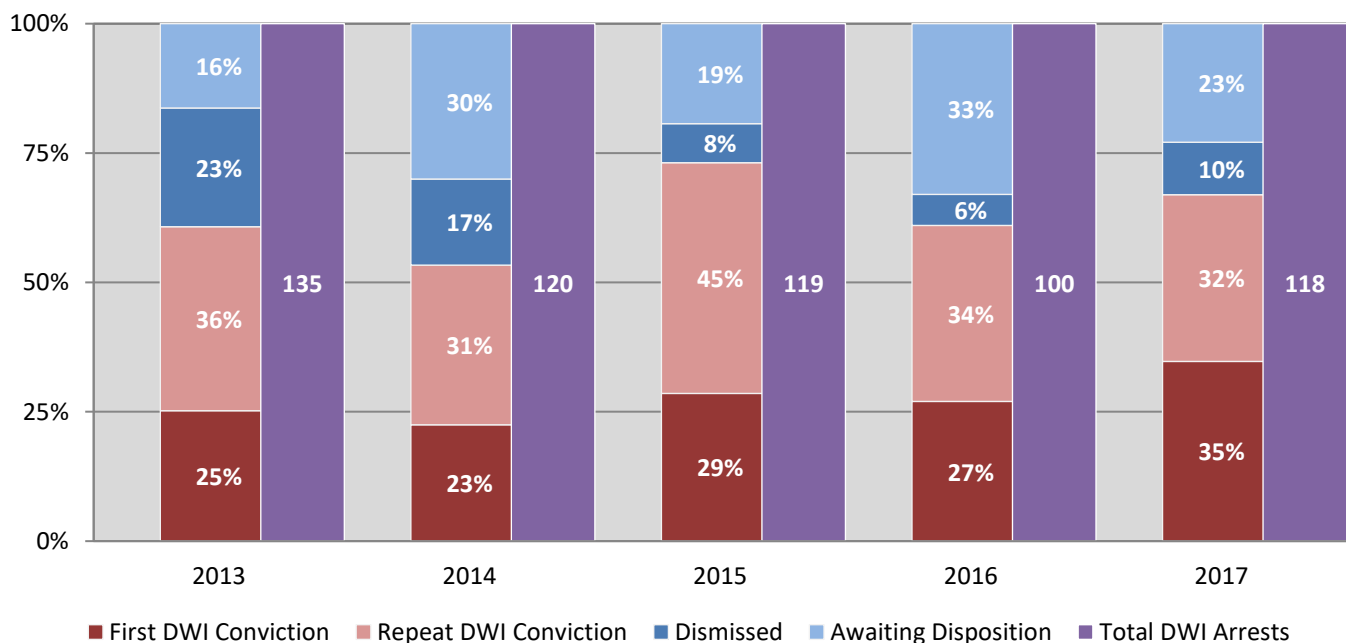
Court Disposition	Average Number of Days		Deviation from Statewide Average
	Las Vegas	Statewide	
DWI Conviction	145	166	-21
DWI Dismissal	167	175	-8

**Table 27: Court Disposition of DWI Arrests
of Las Vegas Residents Throughout the State, 2013-2017**

Year of DWI Arrest ¹	Court Disposition				Total DWI Arrests
	First DWI Conviction	Repeat DWI Conviction	Dismissed	Awaiting Disposition	
2013	34	48	31	22	135
2014	27	37	20	36	120
2015	34	53	9	23	119
2016	27	34	6	33	100
2017	41	38	12	27	118

¹Values are based upon the year of the arrest.

**Figure 14: Court Dispositions by Percentage of DWI Arrests
of Las Vegas Residents Throughout the State, 2013-2017**



*Table 27 contains the values used to calculate percentages shown in Figure 14.