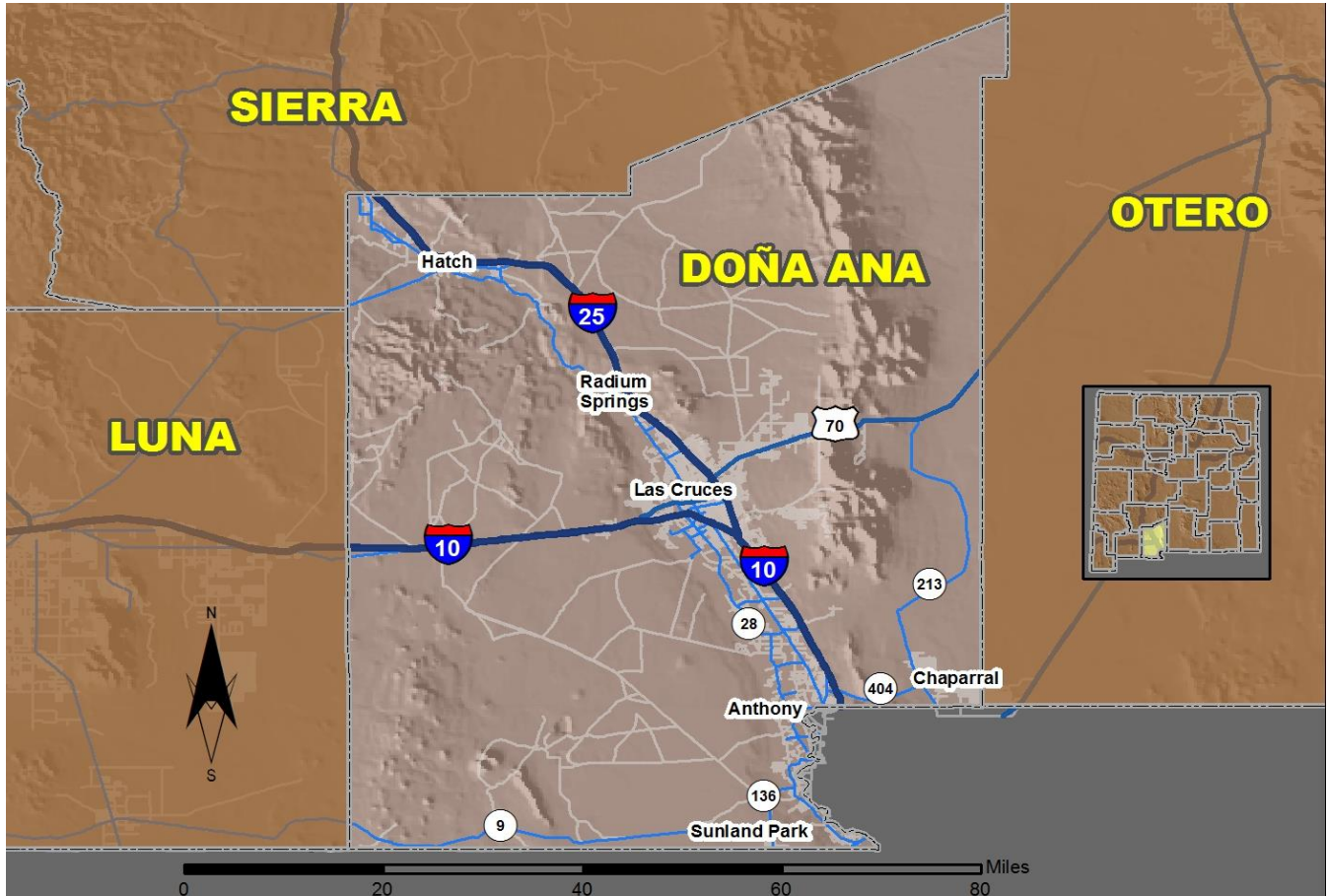


# 2017 Community Report

## Doña Ana County



Produced for the New Mexico Department of Transportation,  
Traffic Safety Division, Traffic Records Bureau,  
Under Contract 6093 by the University of New Mexico,  
Geospatial and Population Studies, Traffic Research Unit

Distributed in compliance with New Mexico Statute 66-7-214  
as a reference source regarding New Mexico traffic crashes

For the purposes of this report, data are compiled by the University of New Mexico, Geospatial and Population Studies, Traffic Research Unit (TRU), on behalf of the New Mexico Department of Transportation (NMDOT). Data in this report may differ from that in other data sources, such as the Federal Fatality Analysis Reporting System (FARS), due to the timing of publications and rules for how data are compiled and maintained in Federal vs. State databases. If you have questions regarding this report, please contact the Traffic Safety Division at 505-827-0427.

<http://tru.unm.edu/Crash-Reports/Community-Reports/>

## Definitions

---

**Aggravated DWI** – A driver arrested for 1) driving with a BAC of 0.16 or higher, 2) driving under the influence of alcohol or drugs and causing bodily injury to a human being as a result, or 3) driving under the influence of alcohol or drugs and refusing to submit to a BAC test at the time of arrest for DWI.

**Alcohol-involved Crash** – A crash for which the Uniform Crash Report indicated that 1) a DWI citation was issued, 2) alcohol was a contributing factor, or 3) a person in control of a vehicle (including a pedestrian or pedalcyclist) was suspected of being under the influence of alcohol.

**Alcohol-involved Driver** – A person in control of a vehicle who was cited for DWI or indicated on the Uniform Crash Report as being either suspected or determined by testing to be under the influence of alcohol. There can be multiple alcohol-involved drivers in a single alcohol-involved crash.

**Crash** – A reported incident on a public roadway involving one or more motor vehicles that resulted in death, personal injury, or at least \$500 in property damage. Crashes on private property (such as a parking lot) are not included.

**DWI Arrest (Citation)** – In this report, a DWI arrest (a.k.a. a DWI citation) is a driver arrested for either DWI or aggravated DWI. New Mexico’s legal limit for presumption of driving while intoxicated (DWI) is 0.08 for non-commercial drivers older than 21 years of age, 0.04 for commercial vehicle drivers, and 0.02 for drivers younger than 21 years of age.

**DWI Conviction** – A driver convicted of driving under the intoxicating influence of alcohol, narcotics, or pathogenic drugs, including aggravated DWI.

**Fatal Crash** – A crash in which at least one person was killed. More than one person can be killed in a single fatal crash.

**Fatalities** – The number of people killed in a crash. The terms “killed” and “deaths” are synonymous with “fatalities.” A fatality is crash-related if it occurs at the time of the crash or if the person(s) involved in the crash dies within 30 days.

**Injury Crash** – A reported crash in which at least one person was injured. Injury crashes involve at least one suspected serious injury (Class A), suspected minor injury (Class B), or possible injury (Class C). Fatal crashes are not included.

**Missing Data** – An indication that the applicable field on the UCR form was left blank or contained an invalid code. Starting with crashes that occurred in 2012, improvements in the identification of missing data in the NMDOT crash database led to an increase in the reported amount of missing data.

**Pedalcyclist** – A person riding a mechanism of transport that is powered solely by pedals (a.k.a. bicyclist).

**Pedestrian** – A person on foot, walking, running, jogging, hiking, sitting or lying down who is involved in a motor vehicle traffic crash.

## Sources

---

**Crash Data** – New Mexico Department of Transportation, Traffic Safety Division, Traffic Records Bureau, Traffic Crash Database, as of the report date below. Crash data are compiled using NMDOT Uniform Crash Reports (UCR), submitted by law enforcement agencies in the state, for any incident on a public roadway involving one or more motor vehicles that resulted in death, injury, or at least \$500 in property damage. These reports are processed by the NMDOT Traffic Records Bureau and analyzed by the University of New Mexico, Geospatial and Population Studies, Traffic Research Unit (TRU).

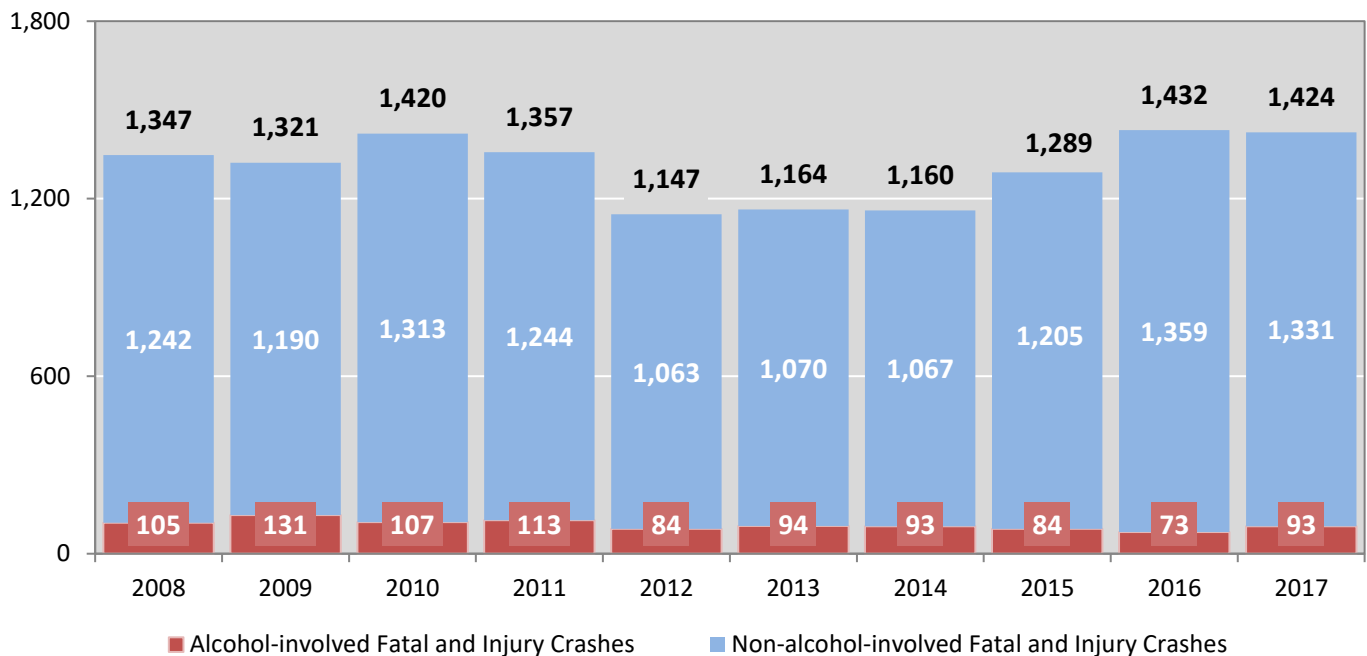
**DWI Citation Tracking System (CTS)** – New Mexico Taxation and Revenue Department (NM TRD), Motor Vehicle Division (MVD), DWI Citation Tracking System (CTS), as of February 2019. Repeat offenders are identified by the combination of account key, arrest date, and citation number. County data are based upon the county where the arrest took place. City data are based upon the city where the offender resides.

**Urban Areas** – New Mexico Department of Transportation, Asset Management and Planning, 2010 U.S. Census Urbanized Area Boundaries, NMDOT-Adjusted, and U.S. Census Urban Clusters, August 21, 2013. In crashes before 2013, “urban” was defined as a town or city with a population of at least 2,500 people.

**Table 1: Total Crashes and Alcohol-involved Crashes by Crash Severity in Doña Ana County, 2008-2017**

Year	Total Crashes				Alcohol-involved Crashes			
	Fatal	Injury	Property Damage Only	Total	Fatal	Injury	Property Damage Only	Total
2008	12	1,335	2,648	<b>3,995</b>	6	99	110	<b>215</b>
2009	24	1,297	2,816	<b>4,137</b>	13	118	129	<b>260</b>
2010	24	1,396	2,719	<b>4,139</b>	11	96	105	<b>212</b>
2011	14	1,343	2,820	<b>4,177</b>	4	109	122	<b>235</b>
2012	22	1,125	2,845	<b>3,992</b>	6	78	103	<b>187</b>
2013	14	1,150	2,649	<b>3,813</b>	6	88	93	<b>187</b>
2014	18	1,142	2,616	<b>3,776</b>	10	83	98	<b>191</b>
2015	17	1,272	2,978	<b>4,267</b>	5	79	111	<b>195</b>
2016	21	1,411	2,900	<b>4,332</b>	7	66	101	<b>174</b>
2017	28	1,396	2,879	<b>4,303</b>	10	83	103	<b>196</b>

**Figure 1: Alcohol-involved Fatal and Injury Crashes Compared with Non-alcohol-involved Fatal and Injury Crashes in Doña Ana County, 2008-2017**



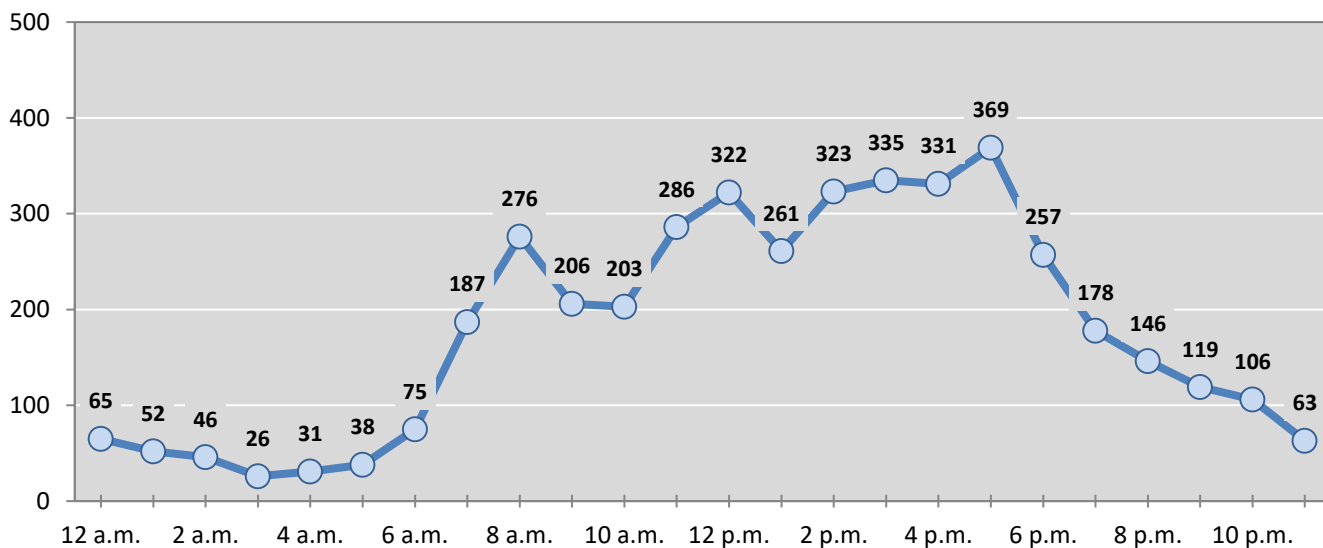
**Table 2: Crashes by Month in Doña Ana County, 2013-2017**

Month	Crashes					5-Year Average
	2013	2014	2015	2016	2017	
January	303	289	366	345	303	<b>321</b>
February	243	277	347	335	299	<b>300</b>
March	340	296	316	374	365	<b>338</b>
April	322	334	346	377	393	<b>354</b>
May	305	323	339	368	370	<b>341</b>
June	256	326	277	304	297	<b>292</b>
July	283	283	320	309	318	<b>303</b>
August	326	330	369	400	379	<b>361</b>
September	391	347	361	360	390	<b>370</b>
October	378	365	431	407	422	<b>401</b>
November	367	259	360	354	399	<b>348</b>
December	299	347	435	399	368	<b>370</b>
<b>Total Crashes</b>	<b>3,813</b>	<b>3,776</b>	<b>4,267</b>	<b>4,332</b>	<b>4,303</b>	<b>4,098</b>

**Table 3: Alcohol-involved Crashes by Month in Doña Ana County, 2013-2017**

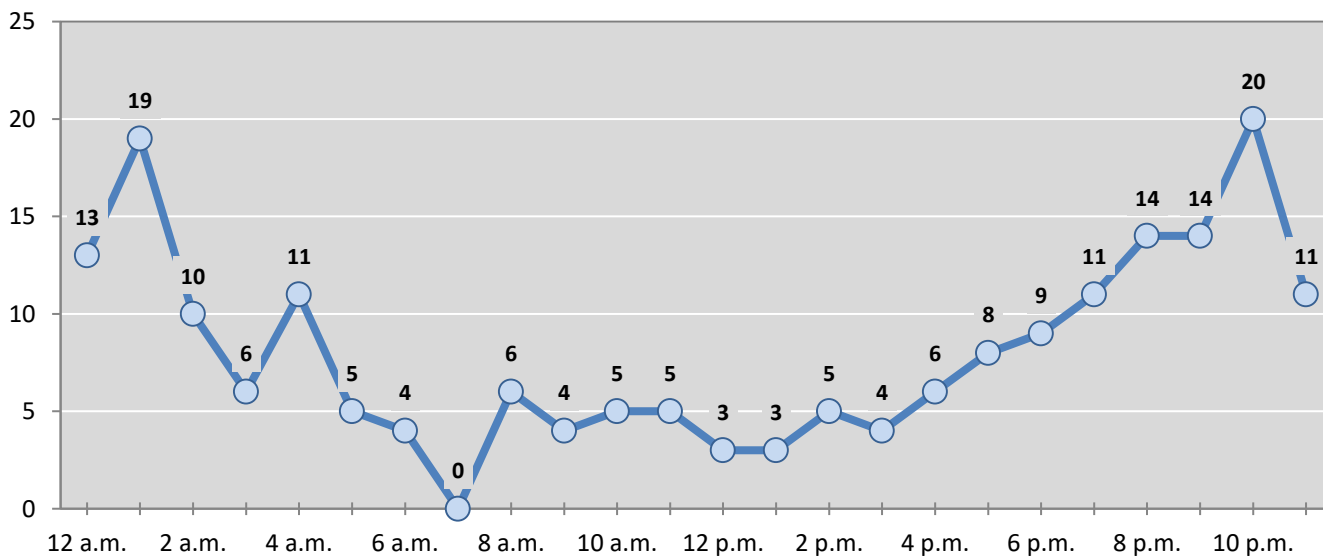
Month	Alcohol-involved Crashes					5-Year Average
	2013	2014	2015	2016	2017	
January	16	13	26	17	11	<b>17</b>
February	13	11	21	13	14	<b>14</b>
March	19	23	14	16	16	<b>18</b>
April	17	24	9	13	16	<b>16</b>
May	13	8	19	8	23	<b>14</b>
June	16	25	10	20	11	<b>16</b>
July	17	16	7	12	14	<b>13</b>
August	14	13	17	16	14	<b>15</b>
September	14	12	14	13	19	<b>14</b>
October	18	20	24	20	22	<b>21</b>
November	16	12	13	13	21	<b>15</b>
December	14	14	21	13	15	<b>15</b>
<b>Total Crashes</b>	<b>187</b>	<b>191</b>	<b>195</b>	<b>174</b>	<b>196</b>	<b>189</b>

**Figure 2: Crashes by Hour in Doña Ana County, 2017**



\* In 2017, Doña Ana County had 2 crashes for which hour data were missing.

**Figure 3: Alcohol-involved Crashes by Hour in Doña Ana County, 2017**



\* In 2017, Doña Ana County had 0 alcohol-involved crashes for which hour data were missing.

**Table 4: Alcohol-involved Crashes by Day of Week in Doña Ana County, 2013-2017**

Day of Week	Alcohol-involved Crashes					5-Year Average
	2013	2014	2015	2016	2017	
Sunday	42	32	43	30	36	<b>37</b>
Monday	19	14	17	17	20	<b>17</b>
Tuesday	18	16	11	15	16	<b>15</b>
Wednesday	15	27	25	17	19	<b>21</b>
Thursday	18	22	19	15	24	<b>20</b>
Friday	31	33	37	35	36	<b>34</b>
Saturday	44	47	43	45	45	<b>45</b>
<b>Total Crashes</b>	<b>187</b>	<b>191</b>	<b>195</b>	<b>174</b>	<b>196</b>	<b>189</b>

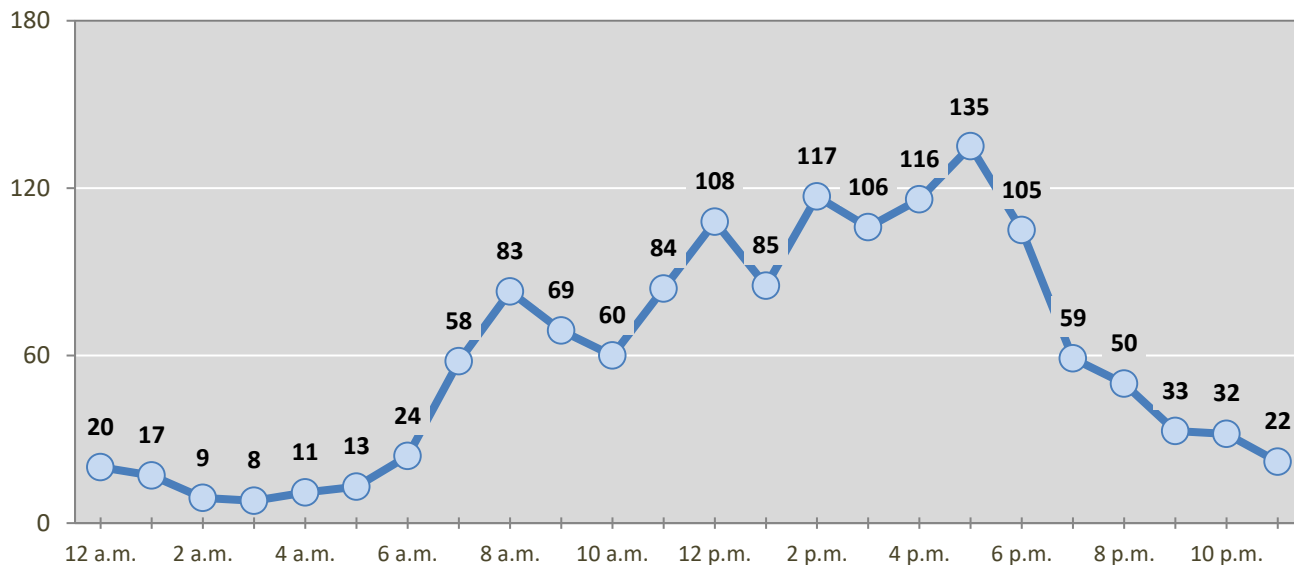
**Table 5: Fatal and Injury Crashes by Day of Week in Doña Ana County, 2013-2017**

Day of Week	Fatal and Injury Crashes					5-Year Average
	2013	2014	2015	2016	2017	
Sunday	121	115	111	141	128	<b>123</b>
Monday	164	197	203	195	198	<b>191</b>
Tuesday	207	161	178	230	208	<b>197</b>
Wednesday	170	192	188	242	202	<b>199</b>
Thursday	165	166	212	231	242	<b>203</b>
Friday	204	198	243	224	278	<b>229</b>
Saturday	133	131	154	169	168	<b>151</b>
<b>Total Crashes</b>	<b>1,164</b>	<b>1,160</b>	<b>1,289</b>	<b>1,432</b>	<b>1,424</b>	<b>1,294</b>

**Table 6: Pedestrian and Pedalcyclist Crashes by Day of Week in Doña Ana County, 2013-2017**

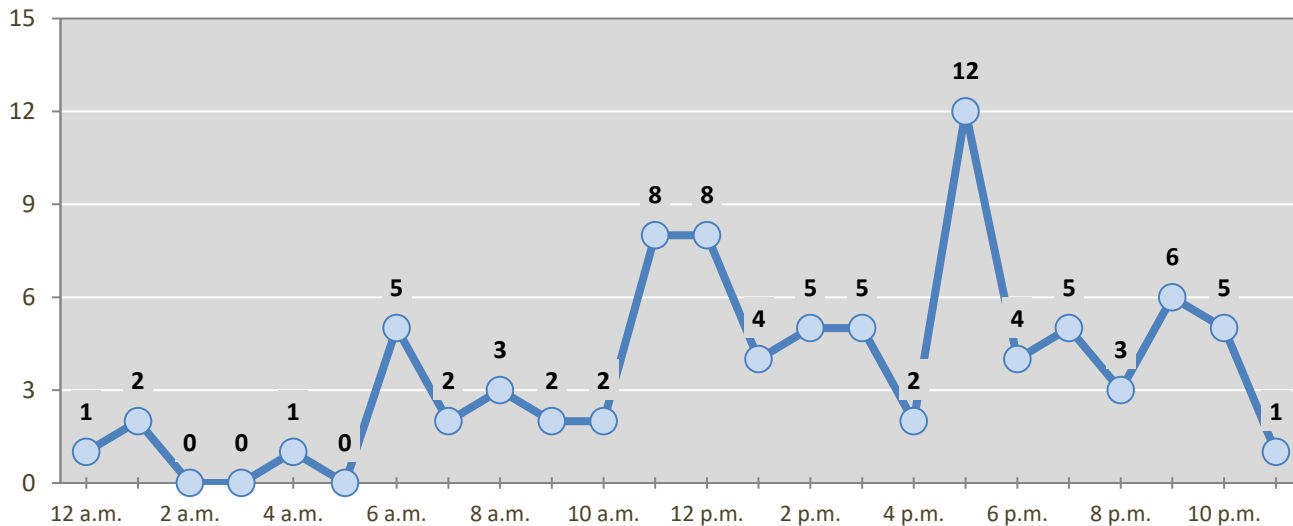
Day of Week	Pedestrian and Pedalcyclist Crashes					5-Year Average
	2013	2014	2015	2016	2017	
Sunday	5	9	4	13	3	<b>7</b>
Monday	14	12	18	14	15	<b>15</b>
Tuesday	14	12	17	15	18	<b>15</b>
Wednesday	10	15	13	21	13	<b>14</b>
Thursday	11	11	9	17	15	<b>13</b>
Friday	21	11	10	12	11	<b>13</b>
Saturday	8	9	12	9	11	<b>10</b>
<b>Total Crashes</b>	<b>83</b>	<b>79</b>	<b>83</b>	<b>101</b>	<b>86</b>	<b>86</b>

**Figure 4: Fatal and Injury Crashes by Hour in Doña Ana County, 2017**



\* In 2017, Doña Ana County had 0 crashes for which hour data were missing.

**Figure 5: Pedestrian and Pedalcyclist Crashes by Hour in Doña Ana County, 2017**



\* In 2017, Doña Ana County had 0 crashes for which hour data were missing.

**Table 7: Severity of Injuries to People in Crashes by Rural and Urban Location in Doña Ana County, 2017**

Urban and Rural Locations by Alcohol-involvement	People in Crashes by Severity of Injuries					Total People
	Fatalities (Class K)	Suspected Serious Injuries (Class A)	Suspected Minor Injuries (Class B)	Possible Injuries (Class C)	No Apparent Injuries (Class O)	
<b>People in Alcohol-involved Crashes</b>	<b>10</b>	<b>13</b>	<b>51</b>	<b>52</b>	<b>282</b>	<b>408</b>
Urban	7	8	31	48	232	326
Rural Non-Interstate	1	3	12	1	35	52
Rural Interstate	2	2	8	3	15	30
<b>People in Crashes</b>	<b>29</b>	<b>122</b>	<b>487</b>	<b>1,352</b>	<b>9,387</b>	<b>11,377</b>
Urban	21	108	409	1,291	8,810	10,639
Rural Non-Interstate	5	8	50	36	371	470
Rural Interstate	3	6	28	25	206	268
<b>Percent in Alcohol-involved Crashes</b>	<b>34%</b>	<b>11%</b>	<b>10%</b>	<b>4%</b>	<b>3%</b>	<b>4%</b>

**Table 8: Total Crashes by Roadway System and Crash Severity in Doña Ana County, 2013-2017**

Crash Severity by System	Crashes by Year					5-Year Average
	2013	2014	2015	2016	2017	
<b>Total Rural Interstate</b>	<b>159</b>	<b>123</b>	<b>120</b>	<b>111</b>	<b>138</b>	<b>130</b>
Fatal Crash	3	1	1	2	3	2
Injury Crash	47	39	39	35	42	40
Property Damage Only Crash	109	83	80	74	93	88
<b>Total Rural Non-Interstate</b>	<b>334</b>	<b>224</b>	<b>193</b>	<b>239</b>	<b>224</b>	<b>243</b>
Fatal Crash	6	5	4	3	5	5
Injury Crash	107	82	60	73	70	78
Property Damage Only Crash	221	137	129	163	149	160
<b>Total Urban</b>	<b>3,320</b>	<b>3,429</b>	<b>3,954</b>	<b>3,982</b>	<b>3,941</b>	<b>3,725</b>
Fatal Crash	5	12	12	16	20	13
Injury Crash	996	1,021	1,173	1,303	1,284	1,155
Property Damage Only Crash	2,319	2,396	2,769	2,663	2,637	2,557



**Table 9: Total Crashes by Crash Classification in Doña Ana County, 2013-2017**

Crash Classification	Total Crashes by Year					5-Year Average
	2013	2014	2015	2016	2017	
Animal	21	16	36	33	26	26
Fixed Object	432	379	394	448	393	409
Other (Non-Collision)	51	45	41	75	67	56
Other (Object)	79	103	80	81	101	89
Other Vehicle	2,716	2,713	3,188	3,221	3,241	3,016
Overturn/Rollover	168	149	61	108	105	118
Parked Vehicle	194	208	221	175	228	205
Pedalcyclist	34	38	47	46	33	40
Pedestrian	50	46	35	55	53	48
Railroad Train	2	3	3	0	1	2
Rollover	0	6	106	53	48	43
Vehicle on Other Road	11	15	7	5	7	9
Missing Data	55	55	48	32	0	38
<b>Total Crashes</b>	<b>3,813</b>	<b>3,776</b>	<b>4,267</b>	<b>4,332</b>	<b>4,303</b>	<b>4,098</b>

**Table 10: Vehicles in Crashes by Vehicle Type in Doña Ana County, 2013-2017**

Vehicle Type <sup>1</sup>	Vehicles in Crashes by Vehicle Type					5-Year Average
	2013	2014	2015	2016	2017	
Bus	18	17	25	21	35	23
Motorcycle	164	128	131	114	126	133
Passenger	3,655	3,974	4,648	4,798	4,678	4,351
Pedalcyclist	34	38	48	49	34	41
Pedestrian	52	44	38	57	58	50
Pickup	1,171	1,042	1,207	1,285	1,359	1,213
Semi	194	235	211	227	216	217
Van/SUV/4WD	1,143	1,085	1,226	1,323	1,429	1,241
Other Vehicle	88	43	117	32	12	58
Missing Data	442	371	432	266	254	353
<b>Total Vehicles</b>	<b>6,961</b>	<b>6,977</b>	<b>8,083</b>	<b>8,172</b>	<b>8,201</b>	<b>7,679</b>

<sup>1</sup> Pedestrians and pedalcyclists are counted as non-motorized vehicles, when involved in a crash with a motor vehicle. See Page 17 for data on drivers of non-motorized vehicles in crashes (i.e. pedestrians and pedalcyclists).

**Table 11: Motor Vehicle Drivers in Crashes by Vehicle Type and Age Group in Doña Ana County, 2017**

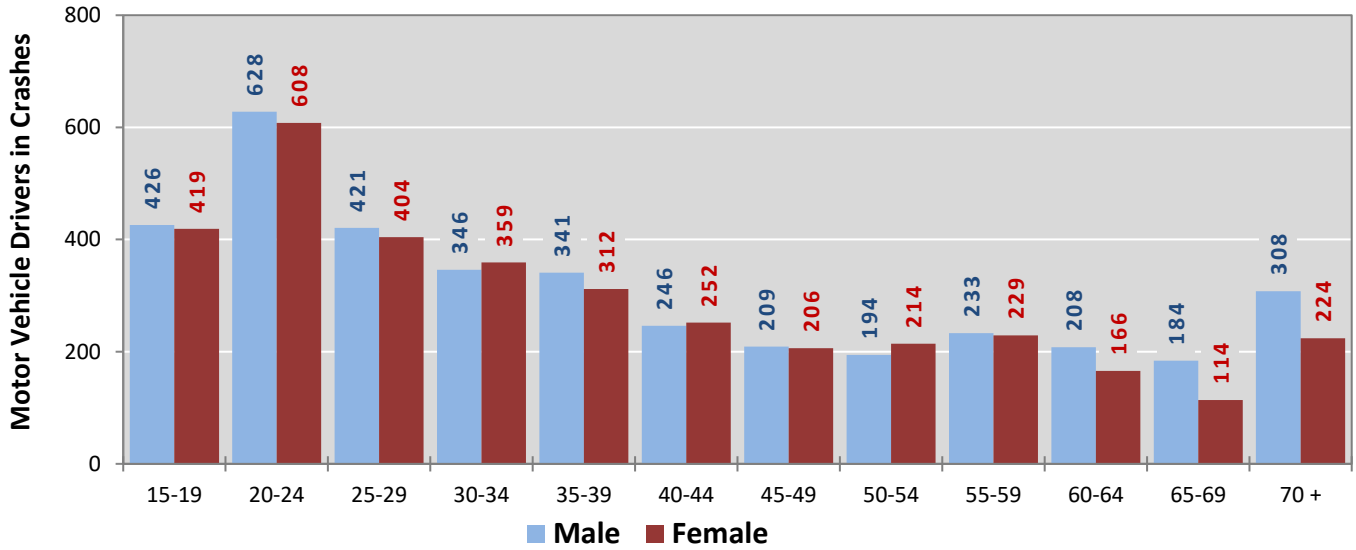
Age Groups	Motor Vehicle <sup>1</sup> Drivers by Vehicle Type and Age Group								Total Drivers
	Bus	Motor-cycle	Passenger	Pickup	Semi	Van 4WD SUV	Other Vehicle	Missing Data	
15-19	0	4	615	126	5	92	0	4	846
20-24	0	31	884	164	10	139	0	8	1,236
25-29	0	9	535	112	23	143	0	4	826
30-34	2	16	377	129	12	163	1	6	706
35-39	1	14	360	110	26	136	2	6	655
40-44	2	9	277	75	24	107	1	3	498
45-49	2	4	209	85	23	86	1	6	416
50-54	4	7	190	90	19	96	0	2	408
55-59	11	12	236	77	32	94	0	0	462
60-64	8	6	182	85	15	78	1	0	375
65-69	1	6	153	60	6	71	1	1	299
70 +	3	2	292	112	6	115	2	0	532
Missing Data	1	6	368	134	15	109	3	214	850
<b>Total Drivers</b>	<b>35</b>	<b>126</b>	<b>4,678</b>	<b>1,359</b>	<b>216</b>	<b>1,429</b>	<b>12</b>	<b>254</b>	<b>8,109</b>

**Table 12: Alcohol-involved Motor Vehicle Drivers in Crashes by Vehicle Type and Age Group in Doña Ana County, 2017**

Age Groups	Alcohol-involved Motor Vehicle <sup>1</sup> Drivers by Vehicle Type and Age Group								Total Drivers
	Bus	Motor-cycle	Passenger	Pickup	Semi	Van 4WD SUV	Other Vehicle	Missing Data	
15-19	0	0	11	4	0	0	0	0	15
20-24	0	2	40	8	0	3	0	0	53
25-29	0	0	20	6	0	7	0	0	33
30-34	0	2	11	9	0	4	0	0	26
35-39	0	2	10	7	0	2	0	0	21
40-44	0	0	6	3	0	3	0	0	12
45-49	0	0	0	0	0	6	0	0	6
50-54	0	0	0	2	0	0	0	0	2
55-59	0	1	5	4	0	1	0	0	11
60-64	0	0	0	2	0	0	0	0	2
65-69	0	0	2	2	0	0	0	0	4
70 +	0	1	2	1	0	1	0	0	5
Missing Data	0	0	1	1	0	0	0	1	3
<b>Total Drivers</b>	<b>0</b>	<b>8</b>	<b>108</b>	<b>49</b>	<b>0</b>	<b>27</b>	<b>0</b>	<b>1</b>	<b>193</b>

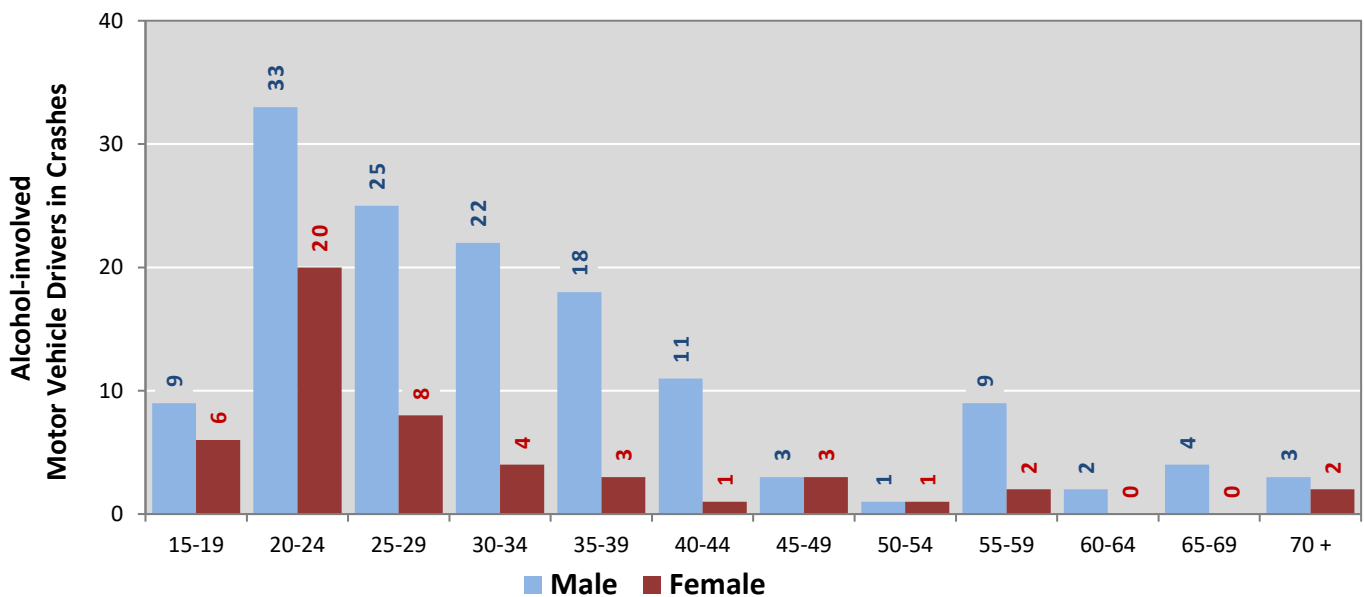
<sup>1</sup> See Page 17 for data on drivers of non-motorized vehicles in crashes (i.e. pedestrians and pedalcyclists).

**Figure 6: Motor Vehicle Drivers in Crashes by Age Group and Sex in Doña Ana County, 2017**



\* In 2017, Doña Ana County had 858 drivers in crashes for which age or sex data were missing.

**Figure 7: Alcohol-involved Motor Vehicle Drivers in Crashes by Age Group and Sex in Doña Ana County, 2017**



\* In 2017, Doña Ana County had 3 drivers in crashes for which age or sex data were missing.

**Table 13: Alcohol-involved Motor Vehicle Drivers Under 21 (Ages 15-20) in Crashes in Doña Ana County, 2013-2017**

Age <sup>1</sup>	Year					5-Year Total
	2013	2014	2015	2016	2017	
15	0	0	0	0	0	0
16	0	1	4	1	1	7
17	1	1	5	1	2	10
18	4	4	1	7	2	18
19	9	8	6	5	10	38
20	13	14	4	6	9	46
<b>Total Drivers</b>	<b>27</b>	<b>28</b>	<b>20</b>	<b>20</b>	<b>24</b>	<b>119</b>

**Table 14: Motor Vehicle Drivers Under 21 (Ages 15-20) in Crashes by Age, Sex and Alcohol-involvement in Doña Ana County, 2017**

Age <sup>1</sup>	Total Drivers				Alcohol-involved Drivers			
	Sex		Total Drivers	Percent of Total	Sex		Total Drivers	Percent of Total
	Male	Female			Male	Female		
15	15	9	24	2%	0	0	0	0%
16	66	59	125	11%	1	0	1	4%
17	79	67	146	13%	1	1	2	8%
18	127	133	260	23%	0	2	2	8%
19	139	151	290	26%	7	3	10	42%
20	147	138	285	25%	7	2	9	38%
<b>Total Drivers</b>	<b>573</b>	<b>557</b>	<b>1,130</b>	<b>100%</b>	<b>16</b>	<b>8</b>	<b>24</b>	<b>100%</b>

<sup>1</sup> For analysis of drivers under age 21, when the driver age or sex are not identified on the crash report (typically hit-and-run drivers), the driver data are considered unreliable and are excluded from the analysis.

**Table 15: Frequency of Contributing Factors in Crashes  
by Crash Severity in Doña Ana County, 2017**

Contributing Factors	Frequency of Contributing Factor <sup>1</sup> by Crash Severity			
	Frequency in Fatal Crashes	Frequency in Injury Crashes	Frequency in Property Damage Only Crashes	Frequency in All Crashes
<b>Human</b>	<b>57</b>	<b>1,684</b>	<b>3,122</b>	<b>4,863</b>
Driver Inattention	9	579	1,062	1,650
Failed to Yield Right of Way	2	250	357	609
Other Improper Driving	4	138	279	421
Following Too Closely	0	146	270	416
Alcohol Involved	11	84	102	197
Made Improper Turn	0	57	134	191
Avoid No Contact - Vehicle	0	53	131	184
Excessive Speed	5	75	101	181
Disregarded Traffic Signal	0	78	86	164
Improper Lane Change	1	22	141	164
Speed Too Fast for Conditions	3	48	77	128
Drove Left Of Center	7	34	79	120
Improper Backing	0	9	101	110
Passed Stop Sign	2	31	52	85
Improper Overtaking	2	12	51	65
Avoid No Contact - Other	0	15	30	45
Cell Phone	0	9	20	29
Drug Involved	2	10	16	28
Pedestrian Error	6	17	4	27
Driverless Moving Vehicle	0	4	8	12
High Speed Pursuit	1	5	6	12
Vehicle Skidded Before Brake	1	4	6	11
Texting	0	2	4	6
Failed to Yield to Police Vehicle	1	1	3	5
Failed to Yield to Emergency Vehicle	0	1	2	3
<b>Vehicle</b>	<b>0</b>	<b>41</b>	<b>113</b>	<b>154</b>
Inadequate Brakes	0	20	31	51
Other Mechanical Defect	0	10	38	48
Defective Tires	0	9	38	47
Defective Steering	0	2	6	8
<b>Environment</b>	<b>0</b>	<b>3</b>	<b>13</b>	<b>16</b>
Road Defect	0	3	11	14
Traffic Control Not Functioning	0	0	2	2
Low Visibility Due to Smoke	0	0	0	0
<b>Other</b>	<b>16</b>	<b>1,332</b>	<b>2,496</b>	<b>3,844</b>
None	12	1,136	2,121	3,269
Other - No Driver Error	4	196	375	575

<sup>1</sup> Multiple contributing factors may be reported for any vehicle in a crash.

**Table 16: People in Crashes by Crash Classification and Severity of Injuries in Doña Ana County, 2017**

Crash Classification	People in Crashes by Severity of Injuries					Total People
	Fatalities (Class K)	Suspected Serious Injuries (Class A)	Suspected Minor Injuries (Class B)	Possible Injuries (Class C)	No Apparent Injuries (Class O)	
Animal	0	0	0	1	36	<b>37</b>
Fixed Object	2	15	58	39	422	<b>536</b>
Other (Non-Collision)	1	2	14	8	65	<b>90</b>
Other (Object)	0	2	9	14	138	<b>163</b>
Other Vehicle	13	80	295	1,231	8,008	<b>9,627</b>
Overturn/Rollover	2	8	39	22	76	<b>147</b>
Parked Vehicle	0	1	4	3	477	<b>485</b>
Pedalcyclist	0	2	22	7	44	<b>75</b>
Pedestrian	7	7	25	13	76	<b>128</b>
Railroad Train	0	0	0	0	2	<b>2</b>
Rollover	4	5	21	12	32	<b>74</b>
Vehicle on Other Road	0	0	0	2	11	<b>13</b>
Missing Data	0	0	0	0	0	<b>0</b>
<b>Total People</b>	<b>29</b>	<b>122</b>	<b>487</b>	<b>1,352</b>	<b>9,387</b>	<b>11,377</b>

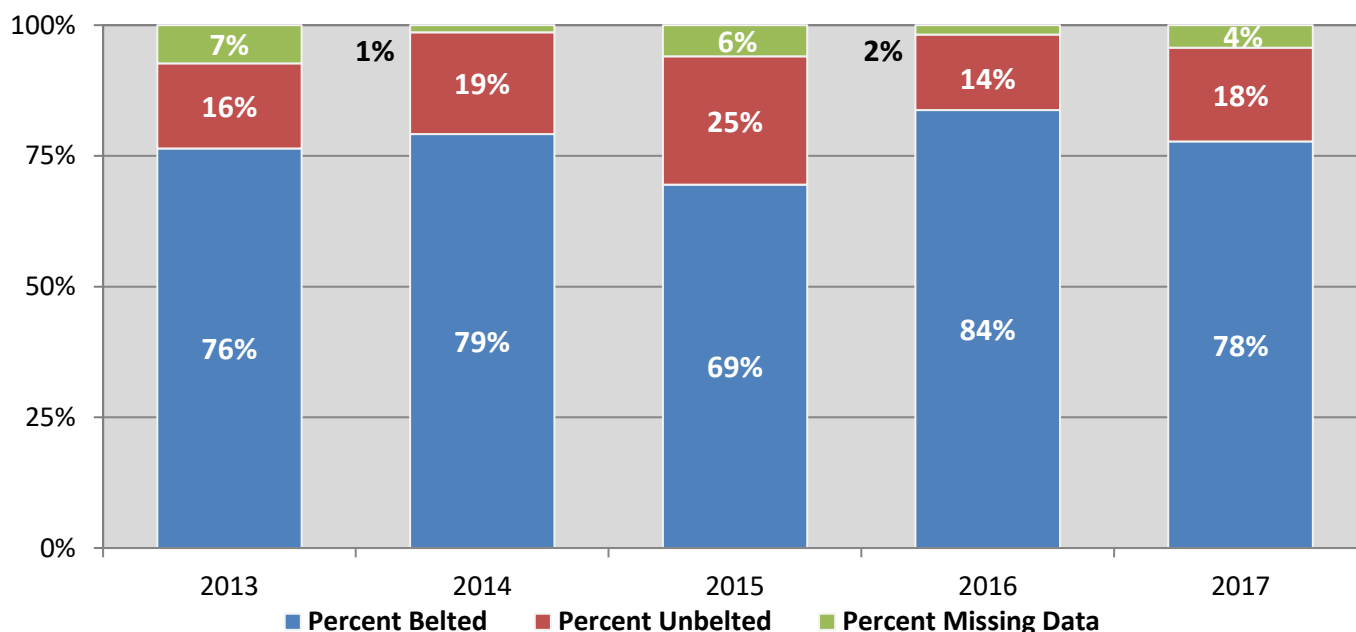
**Table 17: Killed or Injured Unbelted People in Crashes by Sex and Age Group in Doña Ana County, 2017**

Age Groups	Unbelted People Killed or Injured <sup>1,2</sup>				Total People
	Male	Percent of Male	Female	Percent of Female	
0-4	1	3%	2	6%	3
5-9	3	9%	0	0%	3
10-14	0	0%	2	6%	2
15-19	5	15%	8	22%	13
20-24	6	18%	7	19%	13
25-29	5	15%	6	17%	11
30-34	4	12%	6	17%	10
35-39	2	6%	1	3%	3
40-44	3	9%	1	3%	4
45-49	1	3%	0	0%	1
50-54	2	6%	3	8%	5
55-59	1	3%	0	0%	1
60-64	0	0%	0	0%	0
65-69	0	0%	0	0%	0
70 +	1	3%	0	0%	1
Missing Data	0	0%	0	0%	0
<b>Total People</b>	<b>34</b>	<b>100%</b>	<b>36</b>	<b>100%</b>	<b>70</b>

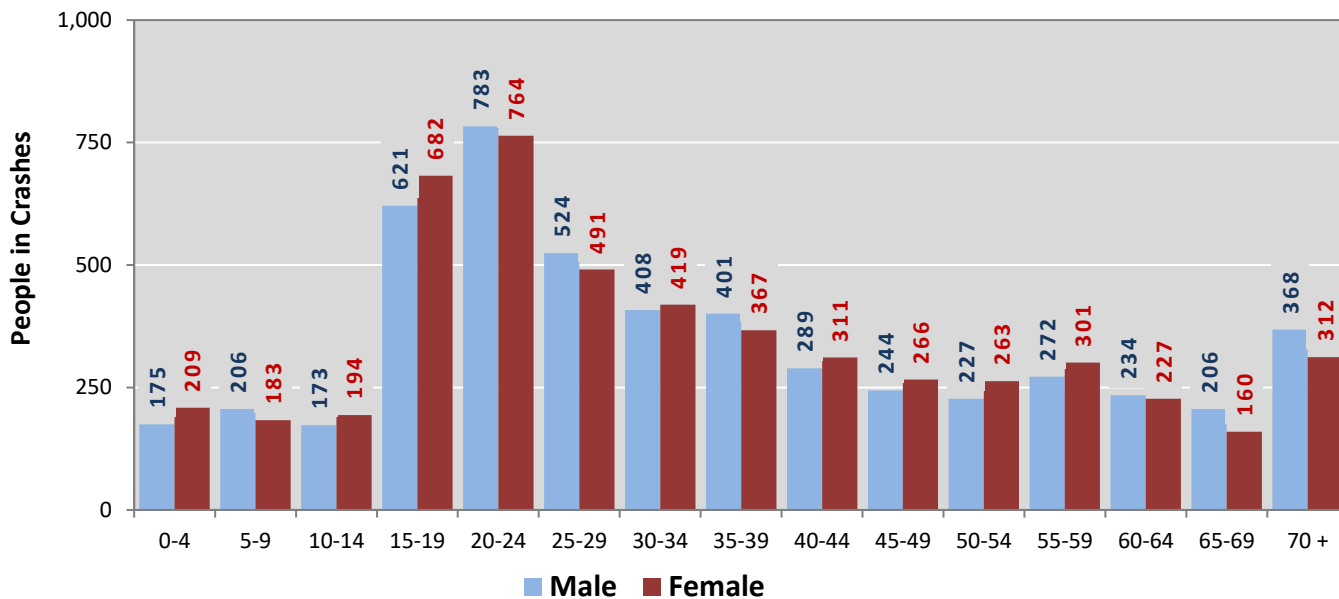
<sup>1</sup> People injured are in one of three categories: suspected serious injury, suspected minor injury, or possible injury.

<sup>2</sup> Excludes people in or on buses, heavy trucks, motorcycles, or ATVs.

**Figure 8: Seatbelt Use by People in Crashes with Fatal or Suspected Serious Injuries in Doña Ana County, 2013-2017**

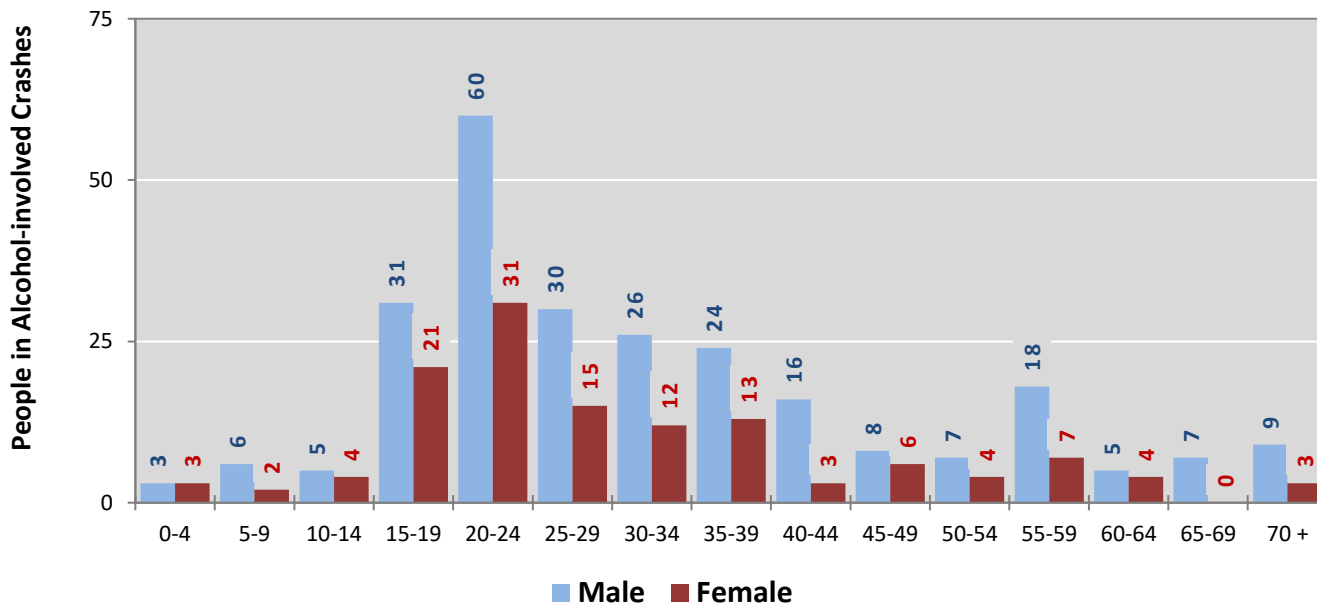


**Figure 9: People in Crashes by Age Group and Sex in Doña Ana County, 2017**



\* In 2017, Doña Ana County had 1097 people in crashes for which age or sex data were missing.

**Figure 10: People in Alcohol-involved Crashes by Age Group and Sex in Doña Ana County, 2017**



\* In 2017, Doña Ana County had 25 people in alcohol-involved crashes for which age or sex data were missing.



**Table 18: Pedestrians and Pedalcyclists in Crashes by Age Group in Doña Ana County, 2013-2017**

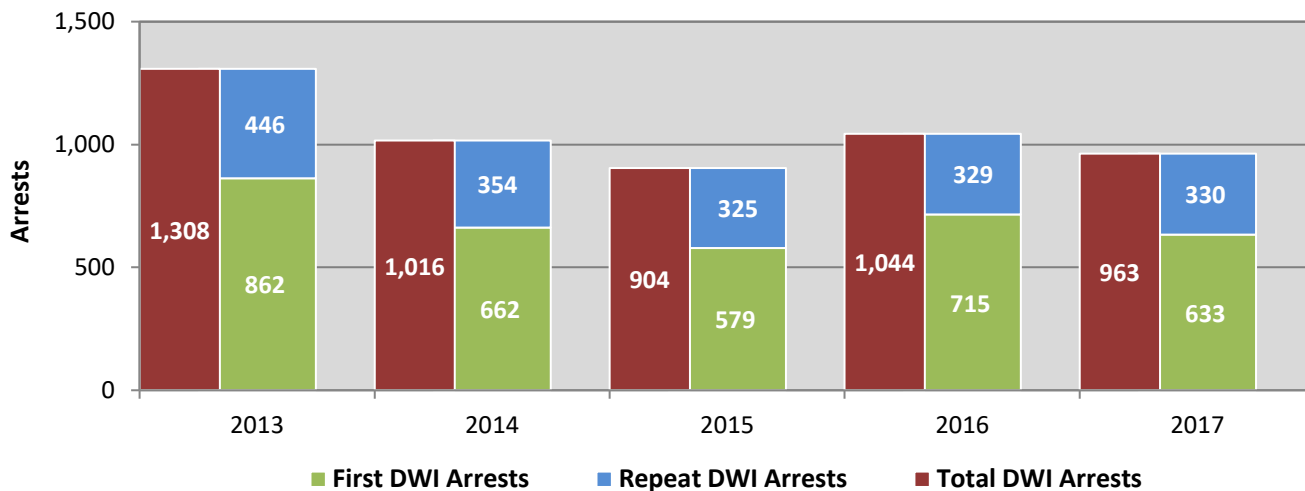
Age Groups	Pedestrians and Pedalcyclists <sup>1</sup> in Crashes					5-Year Total People
	2013	2014	2015	2016	2017	
0-4	2	0	1	2	3	8
5-9	1	3	2	7	4	17
10-14	8	0	5	6	9	28
15-19	9	14	16	12	7	58
20-24	8	10	18	16	9	61
25-29	6	8	9	7	6	36
30-34	4	3	7	6	6	26
35-39	4	6	2	5	7	24
40-44	3	6	2	5	8	24
45-49	11	4	2	7	7	31
50-54	4	2	9	9	4	28
55-59	5	7	7	4	7	30
60-64	4	4	2	8	1	19
65-69	4	3	0	3	4	14
70 +	7	7	0	4	7	25
Missing Data	6	5	4	5	3	23
<b>Total People</b>	<b>86</b>	<b>82</b>	<b>86</b>	<b>106</b>	<b>92</b>	<b>452</b>

**Table 19: Pedestrians and Pedalcyclists in Crashes by Alcohol Involvement and Severity of Injuries in Doña Ana County, 2017**

Alcohol Involvement	Pedestrians and Pedalcyclists <sup>1</sup> in Crashes					Total People
	Fatalities (Class K)	Suspected Serious Injuries (Class A)	Suspected Minor Injuries (Class B)	Possible Injuries (Class C)	No Apparent Injury (Class O)	
<b>Total Pedalcyclists</b>	<b>0</b>	<b>2</b>	<b>22</b>	<b>7</b>	<b>3</b>	<b>34</b>
Involved	0	0	0	0	0	0
Not Involved	0	2	22	7	3	34
<b>Total Pedestrians</b>	<b>7</b>	<b>7</b>	<b>25</b>	<b>11</b>	<b>8</b>	<b>58</b>
Involved	4	1	2	0	1	8
Not Involved	3	6	23	11	7	50
<b>Total People</b>	<b>7</b>	<b>9</b>	<b>47</b>	<b>18</b>	<b>11</b>	<b>92</b>

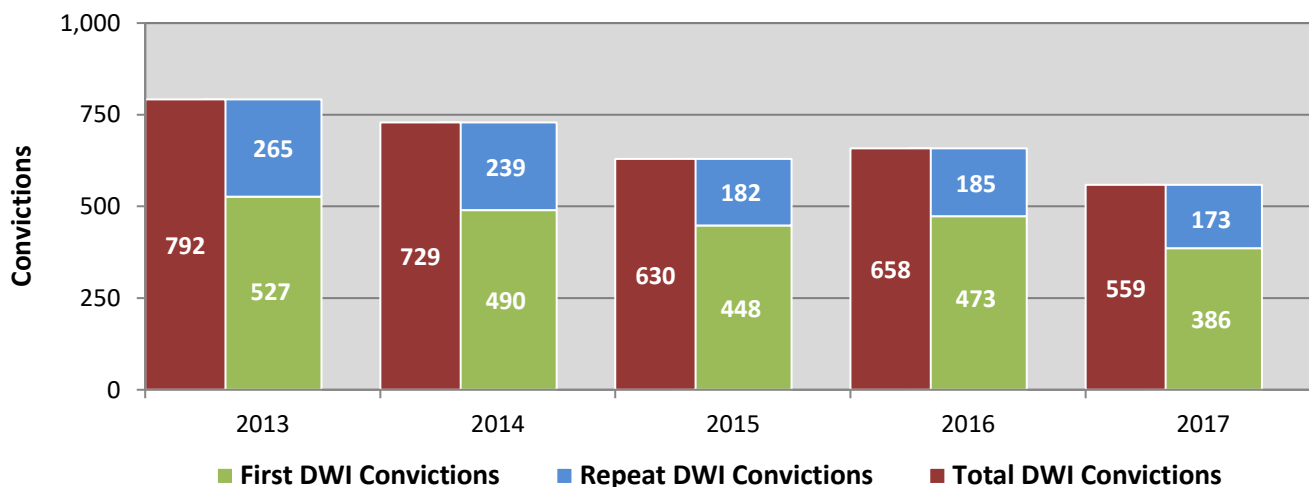
<sup>1</sup> Pedestrians and pedalcyclists are counted as non-motorized vehicles, when involved in a crash with a motor vehicle.

**Figure 11: DWI Arrests in Doña Ana County,  
Showing First and Repeat DWI Arrests, 2013-2017**



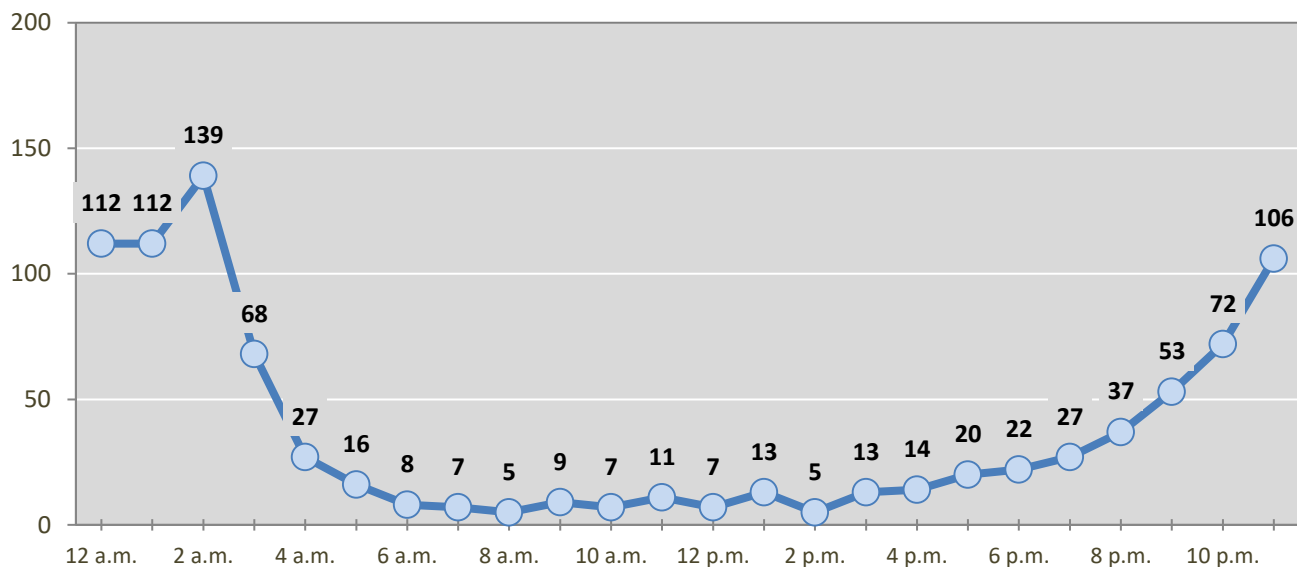
\*Values are based upon the year of the arrest.

**Figure 12: DWI Convictions in Doña Ana County,  
Showing First and Repeat DWI Convictions, 2013-2017**



\*Values are based upon the year of the conviction.

**Figure 13: DWI Arrests by Hour in Doña Ana County, 2017**



\* In 2017, Doña Ana County had 53 arrests for which hour data were missing.

**Table 20: DWI Arrests by Day of Week in Doña Ana County, 2013-2017**

Day of Week	Year					5-Year Average
	2013	2014	2015	2016	2017	
Sunday	280	228	216	231	203	<b>232</b>
Monday	109	75	77	105	92	<b>92</b>
Tuesday	92	79	56	85	91	<b>81</b>
Wednesday	136	116	99	90	81	<b>104</b>
Thursday	132	107	94	92	105	<b>106</b>
Friday	223	170	138	204	154	<b>178</b>
Saturday	336	241	224	237	237	<b>255</b>
<b>Total Arrests</b>	<b>1,308</b>	<b>1,016</b>	<b>904</b>	<b>1,044</b>	<b>963</b>	<b>1,047</b>

**Table 21: Driver First DWI Arrests by Age Group in Doña Ana County, 2013-2017**

Age Groups	Driver First DWI Arrests <sup>1</sup>				
	2013	2014	2015	2016	2017
15-19	72	51	38	68	46
20-24	268	203	180	209	200
25-29	173	118	101	148	137
30-34	99	74	79	73	80
35-39	76	71	46	63	51
40-44	56	28	41	45	40
45-49	33	36	31	30	17
50-54	32	37	26	37	22
55-59	25	20	18	19	18
60-64	18	15	11	13	10
65-69	8	4	6	7	7
70 +	2	5	2	3	5
Missing Data	0	0	0	0	0
<b>Total Drivers</b>	<b>862</b>	<b>662</b>	<b>579</b>	<b>715</b>	<b>633</b>

<sup>1</sup> Values are based upon the year of the arrest.

**Table 22: Driver Repeat DWI Arrests by Age Group in Doña Ana County, 2013-2017**

Age Groups	Driver Repeat DWI Arrests <sup>1</sup>				
	2013	2014	2015	2016	2017
15-19	7	3	3	2	3
20-24	41	44	35	36	38
25-29	84	63	59	61	59
30-34	72	60	43	51	73
35-39	49	43	54	49	47
40-44	62	38	33	32	26
45-49	52	25	26	38	31
50-54	39	30	35	24	21
55-59	20	19	19	22	19
60-64	10	16	10	7	9
65-69	7	8	4	5	4
70 +	2	4	4	2	0
Missing Data	1	1	0	0	0
<b>Total Drivers</b>	<b>446</b>	<b>354</b>	<b>325</b>	<b>329</b>	<b>330</b>

<sup>1</sup> Values are based upon the year of the arrest.

**Table 23: Driver First DWI Convictions by Age Group in Doña Ana County, 2013-2017**

Age Groups	Driver First DWI Convictions <sup>1</sup>				
	2013	2014	2015	2016	2017
15-19	39	29	27	32	21
20-24	156	150	151	150	121
25-29	101	100	83	90	86
30-34	60	54	54	55	48
35-39	46	56	39	45	37
40-44	48	25	20	28	23
45-49	28	18	23	23	12
50-54	17	28	17	27	14
55-59	10	17	14	15	11
60-64	11	9	11	5	9
65-69	8	2	6	2	2
70 +	3	2	3	1	2
Missing Data	0	0	0	0	0
<b>Total Drivers</b>	<b>527</b>	<b>490</b>	<b>448</b>	<b>473</b>	<b>386</b>

<sup>1</sup> Values are based upon the year of the conviction.

**Table 24: Driver Repeat DWI Convictions by Age Group in Doña Ana County, 2013-2017**

Age Groups	Driver Repeat DWI Convictions <sup>1</sup>				
	2013	2014	2015	2016	2017
15-19	1	1	2	1	2
20-24	32	19	18	15	18
25-29	44	46	29	28	25
30-34	49	42	32	28	31
35-39	37	25	24	34	20
40-44	35	38	21	22	18
45-49	23	24	12	24	26
50-54	25	23	24	18	15
55-59	15	8	8	7	10
60-64	2	9	5	5	6
65-69	2	2	4	3	2
70 +	0	2	3	0	0
Missing Data	0	0	0	0	0
<b>Total Drivers</b>	<b>265</b>	<b>239</b>	<b>182</b>	<b>185</b>	<b>173</b>

<sup>1</sup> Values are based upon the year of the conviction.

**Table 25: Court Disposition of DWI Arrests for Doña Ana County and the State, 2017**

Court Disposition of DWI Arrest <sup>1</sup>	Doña Ana County	Statewide	Percent of Statewide
Total DWI Arrests	963	10,501	<b>9.2%</b>
DWI Arrests Resulting in Convictions	536	5,533	<b>9.7%</b>
DWI Arrests Resulting in Dismissals <sup>2</sup>	18	1,426	<b>1.3%</b>
DWI Arrests Awaiting Disposition	409	3,542	<b>11.5%</b>

<sup>1</sup> These are the number of DWI arrests in 2017 and whether the case resulted in a conviction or dismissal, or is still awaiting court disposition, as reported in the NM MVD Citation Tracking System (CTS) as of February 2019.

<sup>2</sup> For this table, a very small number of "not guilty" rulings may be included in the category Dismissals.

**Table 26: Average Number of Days from Date of DWI Arrest to Date of Court Disposition in Doña Ana County and the State, 2017**

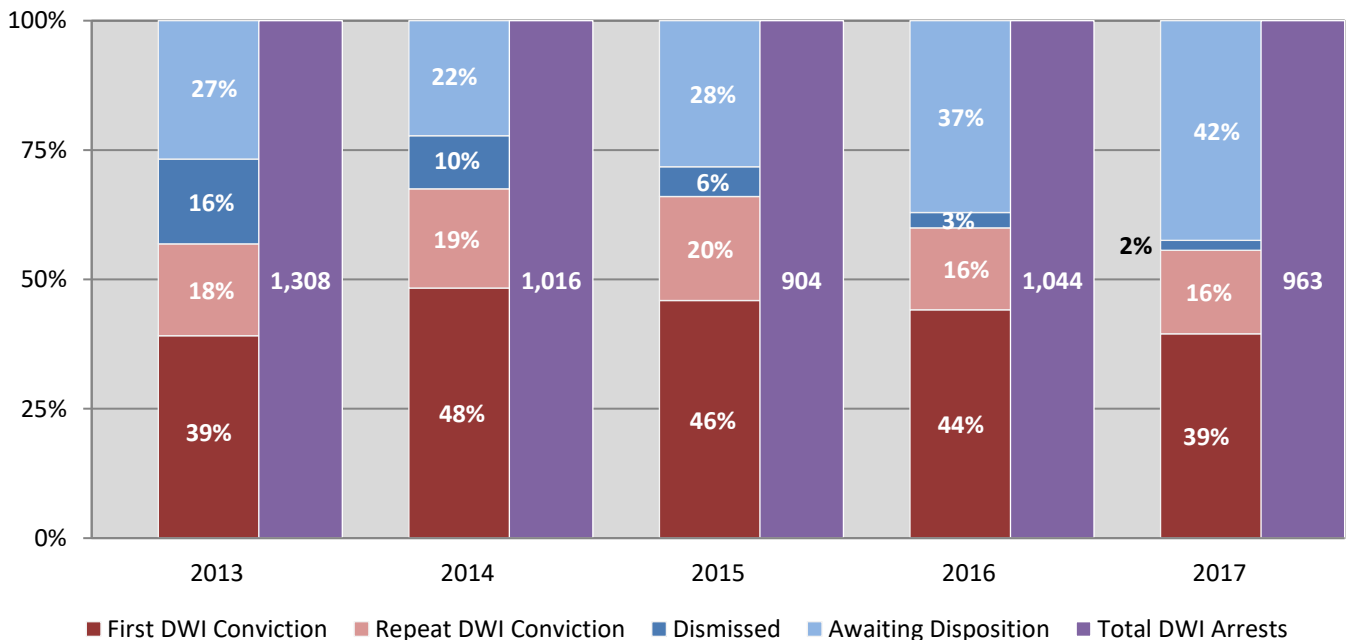
Court Disposition	Average Number of Days		Deviation from Statewide Average
	Doña Ana County	Statewide	
DWI Conviction	185	166	<b>19</b>
DWI Dismissal	168	175	<b>-7</b>

**Table 27: Court Disposition of DWI Arrests in Doña Ana County, 2013-2017**

Year of DWI Arrest <sup>1</sup>	Court Disposition				Total DWI Arrests
	First DWI Conviction	Repeat DWI Conviction	Dismissed	Awaiting Disposition	
2013	512	232	214	350	1,308
2014	491	195	104	226	1,016
2015	415	182	52	255	904
2016	461	165	31	387	1,044
2017	380	156	18	409	963

<sup>1</sup> Values are based upon the year of the arrest.

**Figure 14: Court Dispositions by Percentage of DWI Arrests in Doña Ana County, 2013-2017**



\*Table 27 contains the values used to calculate percentages shown in Figure 14.