

2017 Community Report

Socorro County



Produced for the New Mexico Department of Transportation,
Traffic Safety Division, Traffic Records Bureau,
Under Contract 6093 by the University of New Mexico,
Geospatial and Population Studies, Traffic Research Unit

Distributed in compliance with New Mexico Statute 66-7-214
as a reference source regarding New Mexico traffic crashes

For the purposes of this report, data are compiled by the University of New Mexico, Geospatial and Population Studies, Traffic Research Unit (TRU), on behalf of the New Mexico Department of Transportation (NMDOT). Data in this report may differ from that in other data sources, such as the Federal Fatality Analysis Reporting System (FARS), due to the timing of publications and rules for how data are compiled and maintained in Federal vs. State databases. If you have questions regarding this report, please contact the Traffic Safety Division at 505-827-0427.

<http://tru.unm.edu/Crash-Reports/Community-Reports/>

Definitions

Aggravated DWI – A driver arrested for 1) driving with a BAC of 0.16 or higher, 2) driving under the influence of alcohol or drugs and causing bodily injury to a human being as a result, or 3) driving under the influence of alcohol or drugs and refusing to submit to a BAC test at the time of arrest for DWI.

Alcohol-involved Crash – A crash for which the Uniform Crash Report indicated that 1) a DWI citation was issued, 2) alcohol was a contributing factor, or 3) a person in control of a vehicle (including a pedestrian or pedalcyclist) was suspected of being under the influence of alcohol.

Alcohol-involved Driver – A person in control of a vehicle who was cited for DWI or indicated on the Uniform Crash Report as being either suspected or determined by testing to be under the influence of alcohol. There can be multiple alcohol-involved drivers in a single alcohol-involved crash.

Crash – A reported incident on a public roadway involving one or more motor vehicles that resulted in death, personal injury, or at least \$500 in property damage. Crashes on private property (such as a parking lot) are not included.

DWI Arrest (Citation) – In this report, a DWI arrest (a.k.a. a DWI citation) is a driver arrested for either DWI or aggravated DWI. New Mexico’s legal limit for presumption of driving while intoxicated (DWI) is 0.08 for non-commercial drivers older than 21 years of age, 0.04 for commercial vehicle drivers, and 0.02 for drivers younger than 21 years of age.

DWI Conviction – A driver convicted of driving under the intoxicating influence of alcohol, narcotics, or pathogenic drugs, including aggravated DWI.

Fatal Crash – A crash in which at least one person was killed. More than one person can be killed in a single fatal crash.

Fatalities – The number of people killed in a crash. The terms “killed” and “deaths” are synonymous with “fatalities.” A fatality is crash-related if it occurs at the time of the crash or if the person(s) involved in the crash dies within 30 days.

Injury Crash – A reported crash in which at least one person was injured. Injury crashes involve at least one suspected serious injury (Class A), suspected minor injury (Class B), or possible injury (Class C). Fatal crashes are not included.

Missing Data – An indication that the applicable field on the UCR form was left blank or contained an invalid code. Starting with crashes that occurred in 2012, improvements in the identification of missing data in the NMDOT crash database led to an increase in the reported amount of missing data.

Pedalcyclist – A person riding a mechanism of transport that is powered solely by pedals (a.k.a. bicyclist).

Pedestrian – A person on foot, walking, running, jogging, hiking, sitting or lying down who is involved in a motor vehicle traffic crash.

Sources

Crash Data – New Mexico Department of Transportation, Traffic Safety Division, Traffic Records Bureau, Traffic Crash Database, as of the report date below. Crash data are compiled using NMDOT Uniform Crash Reports (UCR), submitted by law enforcement agencies in the state, for any incident on a public roadway involving one or more motor vehicles that resulted in death, injury, or at least \$500 in property damage. These reports are processed by the NMDOT Traffic Records Bureau and analyzed by the University of New Mexico, Geospatial and Population Studies, Traffic Research Unit (TRU).

DWI Citation Tracking System (CTS) – New Mexico Taxation and Revenue Department (NM TRD), Motor Vehicle Division (MVD), DWI Citation Tracking System (CTS), as of February 2019. Repeat offenders are identified by the combination of account key, arrest date, and citation number. County data are based upon the county where the arrest took place. City data are based upon the city where the offender resides.

Urban Areas – New Mexico Department of Transportation, Asset Management and Planning, 2010 U.S. Census Urbanized Area Boundaries, NMDOT-Adjusted, and U.S. Census Urban Clusters, August 21, 2013. In crashes before 2013, “urban” was defined as a town or city with a population of at least 2,500 people.

Table 1: Total Crashes and Alcohol-involved Crashes by Crash Severity in Socorro County, 2008-2017

Year	Total Crashes				Alcohol-involved Crashes			
	Fatal	Injury	Property Damage Only	Total	Fatal	Injury	Property Damage Only	Total
2008	11	91	230	332	2	11	12	25
2009	10	107	234	351	0	15	14	29
2010	6	97	225	328	3	9	5	17
2011	11	96	237	344	3	6	2	11
2012	4	69	232	305	2	6	10	18
2013	4	63	197	264	1	7	11	19
2014	7	68	198	273	1	6	6	13
2015	4	77	225	306	2	9	6	17
2016	11	67	210	288	1	7	7	15
2017	2	66	161	229	0	11	4	15

Figure 1: Alcohol-involved Fatal and Injury Crashes Compared with Non-alcohol-involved Fatal and Injury Crashes in Socorro County, 2008-2017

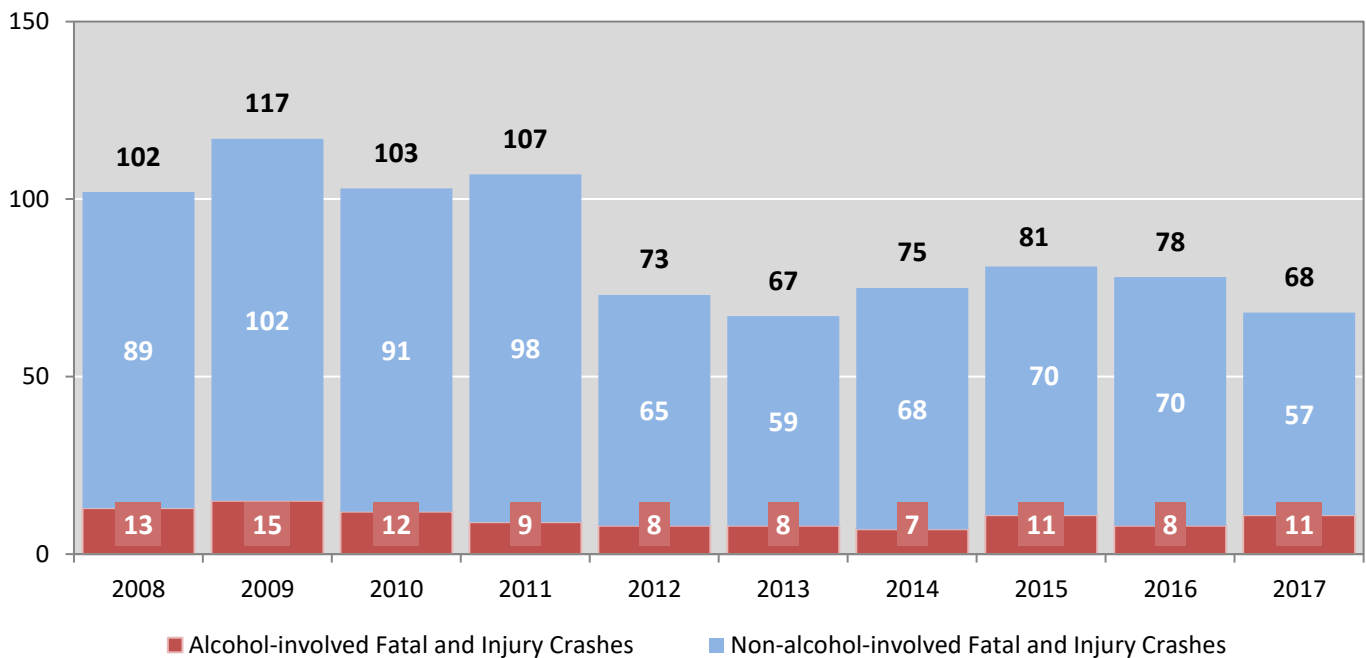


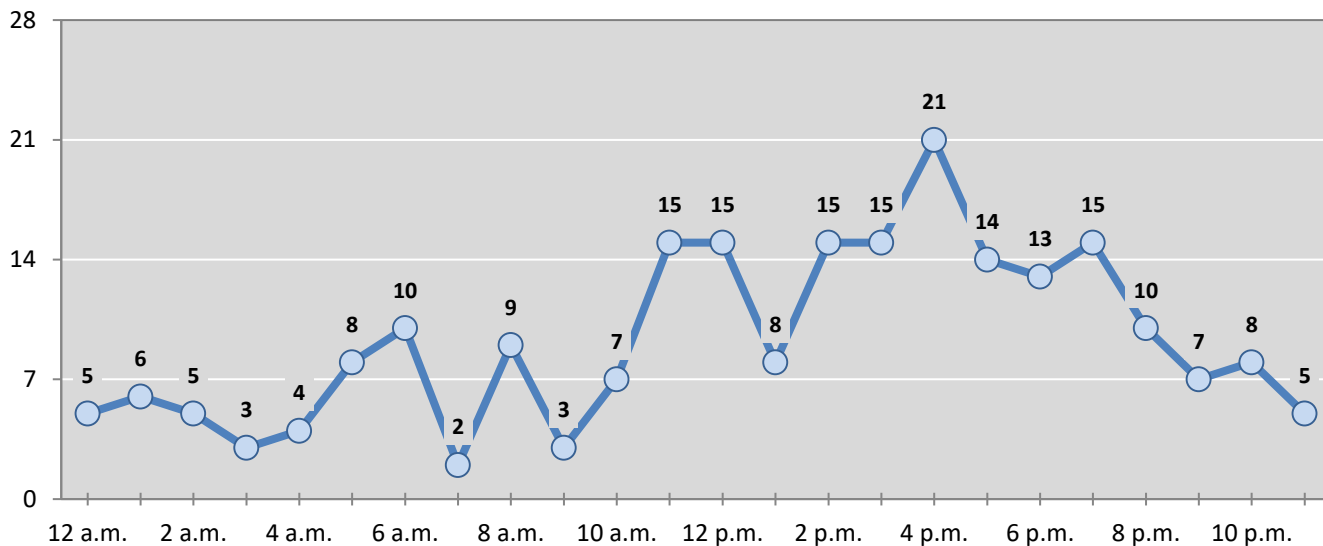
Table 2: Crashes by Month in Socorro County, 2013-2017

Month	Crashes					5-Year Average
	2013	2014	2015	2016	2017	
January	18	18	34	19	20	22
February	21	20	26	24	18	22
March	23	17	32	24	16	22
April	16	15	22	27	16	19
May	16	24	25	19	29	23
June	19	24	31	32	15	24
July	19	31	24	25	23	24
August	21	27	22	22	21	23
September	34	31	16	13	20	23
October	28	21	25	29	17	24
November	28	23	18	26	16	22
December	21	22	31	28	18	24
Total Crashes	264	273	306	288	229	272

Table 3: Alcohol-involved Crashes by Month in Socorro County, 2013-2017

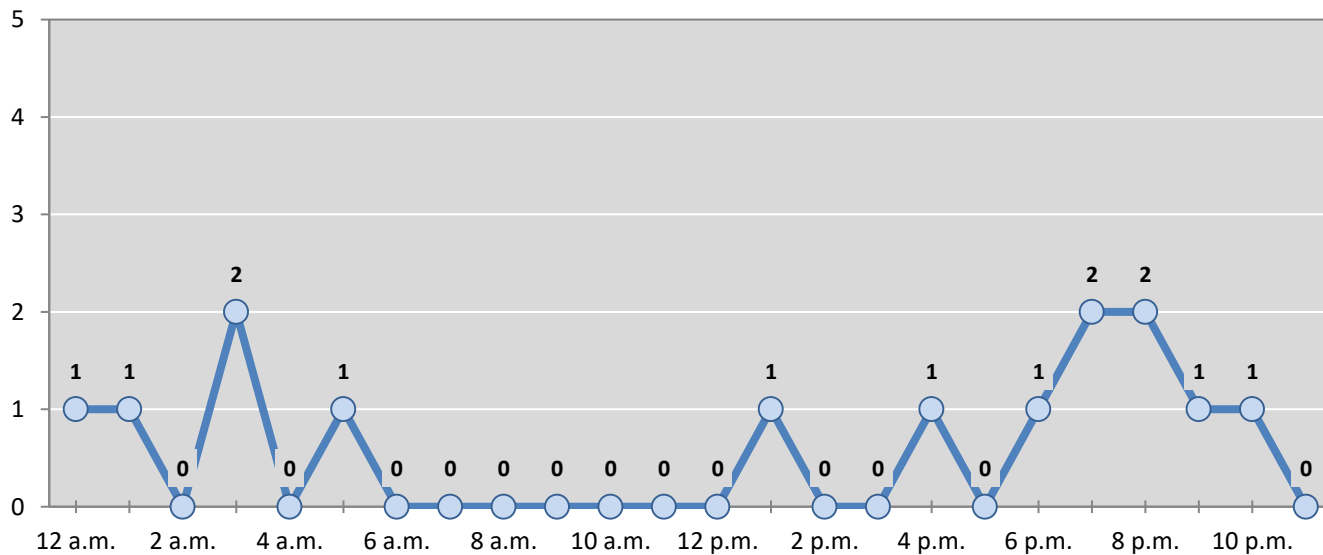
Month	Alcohol-involved Crashes					5-Year Average
	2013	2014	2015	2016	2017	
January	0	0	2	0	2	1
February	1	3	1	1	5	2
March	5	2	1	3	1	2
April	0	0	0	1	1	0
May	1	0	2	1	1	1
June	1	0	0	1	1	1
July	2	3	3	1	1	2
August	1	3	4	1	1	2
September	4	1	1	1	0	1
October	0	1	1	1	2	1
November	3	0	1	2	0	1
December	1	0	1	2	0	1
Total Crashes	19	13	17	15	15	16

Figure 2: Crashes by Hour in Socorro County, 2017



* In 2017, Socorro County had 6 crashes for which hour data were missing.

Figure 3: Alcohol-involved Crashes by Hour in Socorro County, 2017



* In 2017, Socorro County had 1 alcohol-involved crashes for which hour data were missing.

Table 4: Alcohol-involved Crashes by Day of Week in Socorro County, 2013-2017

Day of Week	Alcohol-involved Crashes					5-Year Average
	2013	2014	2015	2016	2017	
Sunday	4	3	4	3	0	3
Monday	1	3	2	2	0	2
Tuesday	1	2	1	0	3	1
Wednesday	3	0	2	3	2	2
Thursday	2	0	0	2	0	1
Friday	3	1	2	4	4	3
Saturday	5	4	6	1	6	4
Total Crashes	19	13	17	15	15	16

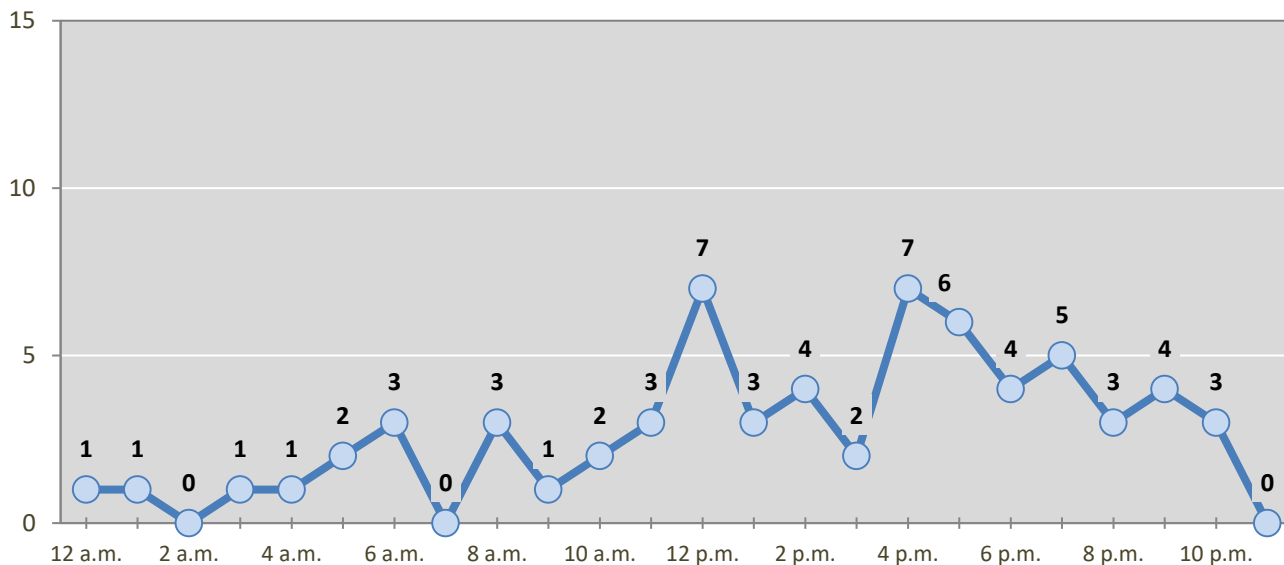
Table 5: Fatal and Injury Crashes by Day of Week in Socorro County, 2013-2017

Day of Week	Fatal and Injury Crashes					5-Year Average
	2013	2014	2015	2016	2017	
Sunday	13	6	9	10	4	8
Monday	7	10	11	14	7	10
Tuesday	9	14	14	10	15	12
Wednesday	10	7	13	10	10	10
Thursday	10	14	6	8	8	9
Friday	11	9	11	15	14	12
Saturday	7	15	17	11	10	12
Total Crashes	67	75	81	78	68	74

Table 6: Pedestrian and Pedalcyclist Crashes by Day of Week in Socorro County, 2013-2017

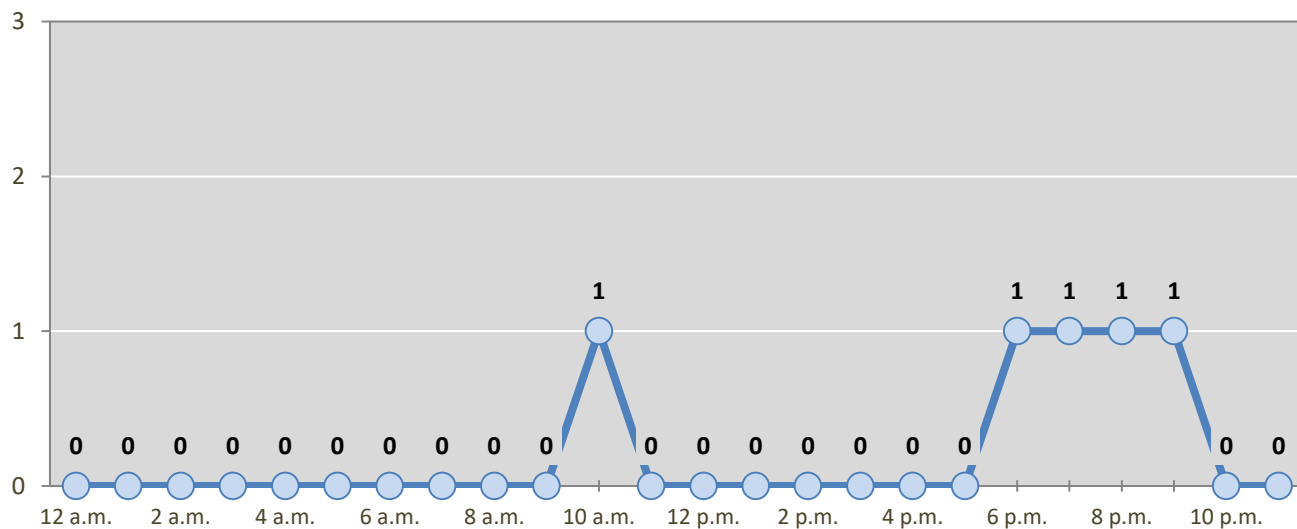
Day of Week	Pedestrian and Pedalcyclist Crashes					5-Year Average
	2013	2014	2015	2016	2017	
Sunday	0	0	0	0	1	0
Monday	2	0	1	1	1	1
Tuesday	2	1	1	1	2	1
Wednesday	2	1	1	3	1	2
Thursday	1	0	1	0	0	0
Friday	0	2	1	1	0	1
Saturday	0	1	0	2	1	1
Total Crashes	7	5	5	8	6	6

Figure 4: Fatal and Injury Crashes by Hour in Socorro County, 2017



* In 2017, Socorro County had 2 crashes for which hour data were missing.

Figure 5: Pedestrian and Pedalcyclist Crashes by Hour in Socorro County, 2017



* In 2017, Socorro County had 1 crashes for which hour data were missing.

Table 7: Severity of Injuries to People in Crashes by Rural and Urban Location in Socorro County, 2017

Urban and Rural Locations by Alcohol-involvement	People in Crashes by Severity of Injuries					Total People
	Fatalities (Class K)	Suspected Serious Injuries (Class A)	Suspected Minor Injuries (Class B)	Possible Injuries (Class C)	No Apparent Injuries (Class O)	
People in Alcohol-involved Crashes	0	2	7	4	21	34
Urban	0	1	4	2	13	20
Rural Non-Interstate	0	0	2	2	8	12
Rural Interstate	0	1	1	0	0	2
People in Crashes	2	12	37	39	372	462
Urban	0	2	16	23	196	237
Rural Non-Interstate	1	3	6	10	78	98
Rural Interstate	1	7	15	6	98	127
Percent in Alcohol-involved Crashes	0%	17%	19%	10%	6%	7%

Table 8: Total Crashes by Roadway System and Crash Severity in Socorro County, 2013-2017

Crash Severity by System	Crashes by Year					5-Year Average
	2013	2014	2015	2016	2017	
Total Rural Interstate	74	95	112	86	65	86
Fatal Crash	1	6	4	8	1	4
Injury Crash	22	25	30	19	20	23
Property Damage Only Crash	51	64	78	59	44	59
Total Rural Non-Interstate	74	56	68	74	52	64
Fatal Crash	3	0	0	3	1	1
Injury Crash	22	14	27	22	15	20
Property Damage Only Crash	49	42	41	49	36	43
Total Urban	116	122	126	128	112	121
Fatal Crash	0	1	0	0	0	0
Injury Crash	19	29	20	26	31	25
Property Damage Only Crash	97	92	106	102	81	96

Table 9: Total Crashes by Crash Classification in Socorro County, 2013-2017

Crash Classification	Total Crashes by Year					5-Year Average
	2013	2014	2015	2016	2017	
Animal	31	31	34	34	26	31
Fixed Object	31	45	53	50	31	42
Other (Non-Collision)	15	10	9	21	9	13
Other (Object)	28	23	22	14	17	21
Other Vehicle	78	92	94	98	93	91
Overturn/Rollover	51	46	18	22	25	32
Parked Vehicle	6	11	26	15	13	14
Pedalcyclist	3	2	2	3	4	3
Pedestrian	4	2	3	5	2	3
Railroad Train	1	1	0	1	0	1
Rollover	0	0	36	20	7	13
Vehicle on Other Road	0	0	2	4	2	2
Missing Data	16	10	7	1	0	7
Total Crashes	264	273	306	288	229	272

Table 10: Vehicles in Crashes by Vehicle Type in Socorro County, 2013-2017

Vehicle Type ¹	Vehicles in Crashes by Vehicle Type					5-Year Average
	2013	2014	2015	2016	2017	
Bus	0	0	0	0	1	0
Motorcycle	8	14	8	4	6	8
Passenger	138	146	120	181	168	151
Pedalcyclist	3	2	2	3	4	3
Pedestrian	5	3	3	5	2	4
Pickup	83	90	102	109	62	89
Semi	15	16	15	21	13	16
Van/SUV/4WD	67	68	93	73	68	74
Other Vehicle	16	3	14	8	0	8
Missing Data	44	64	79	24	23	47
Total Vehicles	379	406	436	428	347	399

¹ Pedestrians and pedalcyclists are counted as non-motorized vehicles, when involved in a crash with a motor vehicle. See Page 17 for data on drivers of non-motorized vehicles in crashes (i.e. pedestrians and pedalcyclists).

Table 11: Motor Vehicle Drivers in Crashes by Vehicle Type and Age Group in Socorro County, 2017

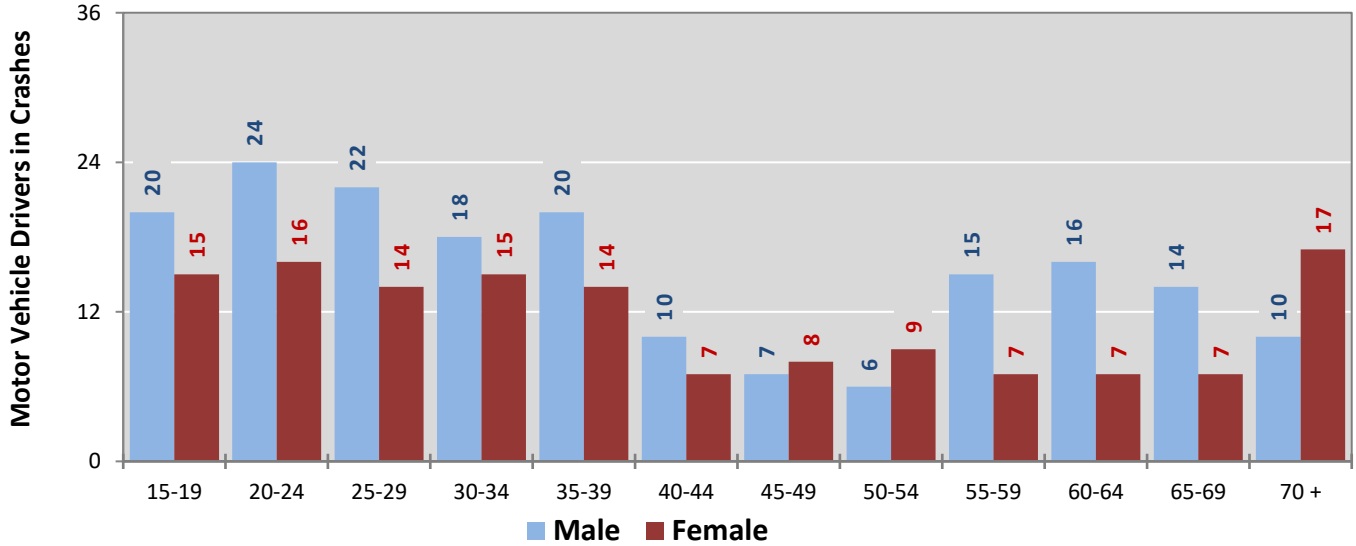
Age Groups	Motor Vehicle ¹ Drivers by Vehicle Type and Age Group								Total Drivers
	Bus	Motor-cycle	Passenger	Pickup	Semi	Van 4WD SUV	Other Vehicle	Missing Data	
15-19	0	0	22	7	0	4	0	2	35
20-24	0	0	22	8	3	5	0	2	40
25-29	0	1	17	8	2	5	0	3	36
30-34	0	0	21	3	1	7	0	1	33
35-39	1	2	16	6	1	7	0	1	34
40-44	0	0	10	2	2	2	0	1	17
45-49	0	0	5	4	2	4	0	0	15
50-54	0	0	4	6	0	4	0	1	15
55-59	0	1	10	7	1	2	0	1	22
60-64	0	1	9	7	0	6	0	0	23
65-69	0	0	6	4	1	9	0	1	21
70 +	0	0	15	0	0	10	0	2	27
Missing Data	0	1	11	0	0	3	0	8	23
Total Drivers	1	6	168	62	13	68	0	23	341

Table 12: Alcohol-involved Motor Vehicle Drivers in Crashes by Vehicle Type and Age Group in Socorro County, 2017

Age Groups	Alcohol-involved Motor Vehicle ¹ Drivers by Vehicle Type and Age Group								Total Drivers
	Bus	Motor-cycle	Passenger	Pickup	Semi	Van 4WD SUV	Other Vehicle	Missing Data	
15-19	0	0	1	0	0	1	0	0	2
20-24	0	0	2	0	1	1	0	0	4
25-29	0	1	1	1	0	0	0	0	3
30-34	0	0	2	0	0	0	0	0	2
35-39	0	0	1	0	0	0	0	0	1
40-44	0	0	1	0	0	0	0	0	1
45-49	0	0	0	0	0	0	0	0	0
50-54	0	0	0	0	0	0	0	0	0
55-59	0	0	0	0	0	0	0	0	0
60-64	0	0	0	0	0	0	0	0	0
65-69	0	0	0	0	0	0	0	0	0
70 +	0	0	0	0	0	0	0	0	0
Missing Data	0	0	0	0	0	1	0	0	1
Total Drivers	0	1	8	1	1	3	0	0	14

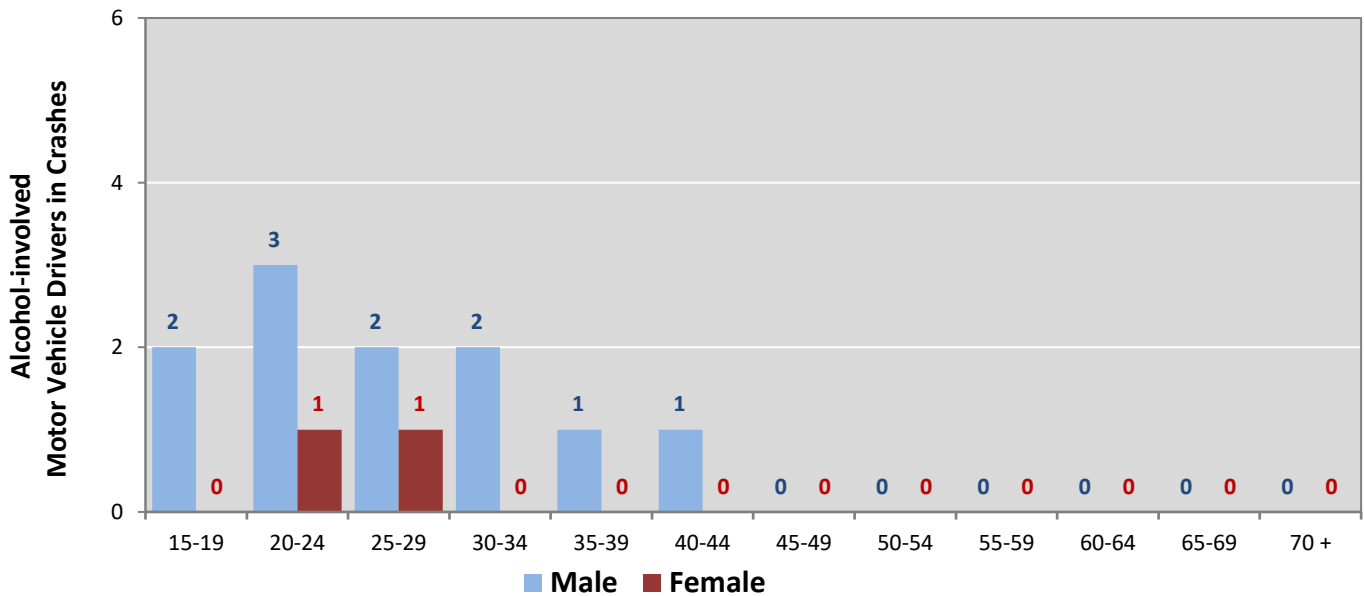
¹ See Page 17 for data on drivers of non-motorized vehicles in crashes (i.e. pedestrians and pedalcyclists).

Figure 6: Motor Vehicle Drivers in Crashes by Age Group and Sex in Socorro County, 2017



* In 2017, Socorro County had 23 drivers in crashes for which age or sex data were missing.

Figure 7: Alcohol-involved Motor Vehicle Drivers in Crashes by Age Group and Sex in Socorro County, 2017



* In 2017, Socorro County had 1 drivers in crashes for which age or sex data were missing.

Table 13: Alcohol-involved Motor Vehicle Drivers Under 21 (Ages 15-20) in Crashes in Socorro County, 2013-2017

Age ¹	Year					5-Year Total
	2013	2014	2015	2016	2017	
15	0	0	0	0	0	0
16	0	1	0	0	0	1
17	0	0	0	0	1	1
18	0	1	0	0	1	2
19	1	0	0	0	0	1
20	0	0	1	0	0	1
Total Drivers	1	2	1	0	2	6

Table 14: Motor Vehicle Drivers Under 21 (Ages 15-20) in Crashes by Age, Sex and Alcohol-involvement in Socorro County, 2017

Age ¹	Total Drivers				Alcohol-involved Drivers			
	Sex		Total Drivers	Percent of Total	Sex		Total Drivers	Percent of Total
	Male	Female			Male	Female		
15	1	0	1	2%	0	0	0	0%
16	2	3	5	11%	0	0	0	0%
17	4	2	6	13%	1	0	1	50%
18	4	4	8	17%	1	0	1	50%
19	9	6	15	32%	0	0	0	0%
20	8	4	12	26%	0	0	0	0%
Total Drivers	28	19	47	100%	2	0	2	100%

¹ For analysis of drivers under age 21, when the driver age or sex are not identified on the crash report (typically hit-and-run drivers), the driver data are considered unreliable and are excluded from the analysis.

**Table 15: Frequency of Contributing Factors in Crashes
by Crash Severity in Socorro County, 2017**

Contributing Factors	Frequency of Contributing Factor ¹ by Crash Severity			
	Frequency in Fatal Crashes	Frequency in Injury Crashes	Frequency in Property Damage Only Crashes	Frequency in All Crashes
Human	2	98	168	268
Driver Inattention	0	29	47	76
Other Improper Driving	1	11	20	32
Excessive Speed	0	10	11	21
Failed to Yield Right of Way	0	7	13	20
Following Too Closely	0	5	11	16
Alcohol Involved	0	12	4	16
Improper Backing	0	1	14	15
Avoid No Contact - Other	0	5	8	13
Speed Too Fast for Conditions	0	4	7	11
Improper Overtaking	0	4	5	9
Drove Left Of Center	1	0	7	8
Avoid No Contact - Vehicle	0	0	6	6
Drug Involved	0	4	1	5
Passed Stop Sign	0	2	2	4
Pedestrian Error	0	2	2	4
Disregarded Traffic Signal	0	1	2	3
Made Improper Turn	0	0	3	3
Vehicle Skidded Before Brake	0	0	3	3
Improper Lane Change	0	0	2	2
Driverless Moving Vehicle	0	1	0	1
Cell Phone	0	0	0	0
Failed to Yield to Emergency Vehicle	0	0	0	0
Failed to Yield to Police Vehicle	0	0	0	0
High Speed Pursuit	0	0	0	0
Texting	0	0	0	0
Vehicle	0	1	10	11
Defective Tires	0	0	5	5
Other Mechanical Defect	0	1	4	5
Inadequate Brakes	0	0	1	1
Defective Steering	0	0	0	0
Environment	0	0	1	1
Traffic Control Not Functioning	0	0	1	1
Low Visibility Due to Smoke	0	0	0	0
Road Defect	0	0	0	0
Other	0	35	118	153
None	0	30	84	114
Other - No Driver Error	0	5	34	39

¹ Multiple contributing factors may be reported for any vehicle in a crash.

Table 16: People in Crashes by Crash Classification and Severity of Injuries in Socorro County, 2017

Crash Classification	People in Crashes by Severity of Injuries					Total People
	Fatalities (Class K)	Suspected Serious Injuries (Class A)	Suspected Minor Injuries (Class B)	Possible Injuries (Class C)	No Apparent Injuries (Class O)	
Animal	0	0	1	1	37	39
Fixed Object	1	2	7	4	33	47
Other (Non-Collision)	0	1	1	1	14	17
Other (Object)	0	2	0	1	22	25
Other Vehicle	0	1	9	21	202	233
Overturn/Rollover	0	4	11	8	18	41
Parked Vehicle	0	0	1	2	24	27
Pedalcyclist	0	0	3	0	4	7
Pedestrian	0	1	1	0	5	7
Railroad Train	0	0	0	0	0	0
Rollover	1	1	2	1	8	13
Vehicle on Other Road	0	0	1	0	5	6
Missing Data	0	0	0	0	0	0
Total People	2	12	37	39	372	462

Table 17: Killed or Injured Unbelted People in Crashes by Sex and Age Group in Socorro County, 2017

Age Groups	Unbelted People Killed or Injured ^{1,2}				Total People
	Male	Percent of Male	Female	Percent of Female	
0-4	0	0%	0	0%	0
5-9	0	0%	0	0%	0
10-14	0	0%	0	0%	0
15-19	0	0%	1	20%	1
20-24	1	14%	0	0%	1
25-29	2	29%	1	20%	3
30-34	1	14%	2	40%	3
35-39	1	14%	0	0%	1
40-44	1	14%	0	0%	1
45-49	0	0%	0	0%	0
50-54	0	0%	0	0%	0
55-59	0	0%	1	20%	1
60-64	1	14%	0	0%	1
65-69	0	0%	0	0%	0
70 +	0	0%	0	0%	0
Missing Data	0	0%	0	0%	0
Total People	7	100%	5	100%	12

¹ People injured are in one of three categories: suspected serious injury, suspected minor injury, or possible injury.

² Excludes people in or on buses, heavy trucks, motorcycles, or ATVs.

Figure 8: Seatbelt Use by People in Crashes with Fatal or Suspected Serious Injuries in Socorro County, 2013-2017

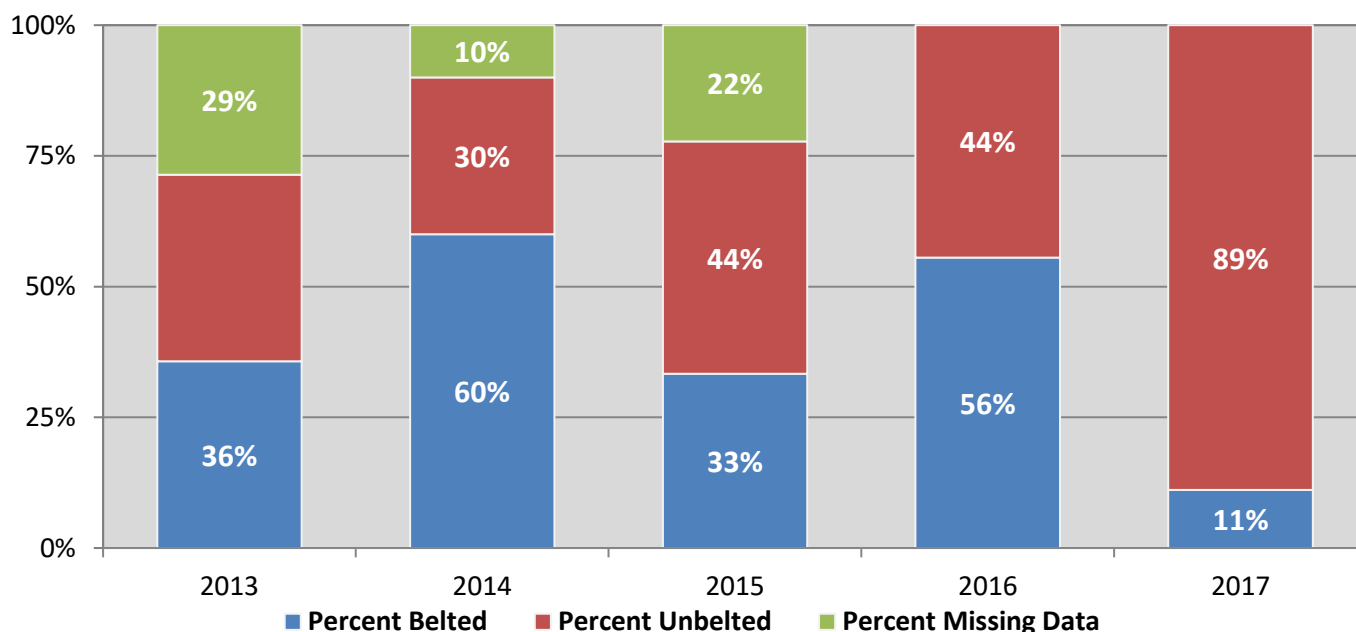
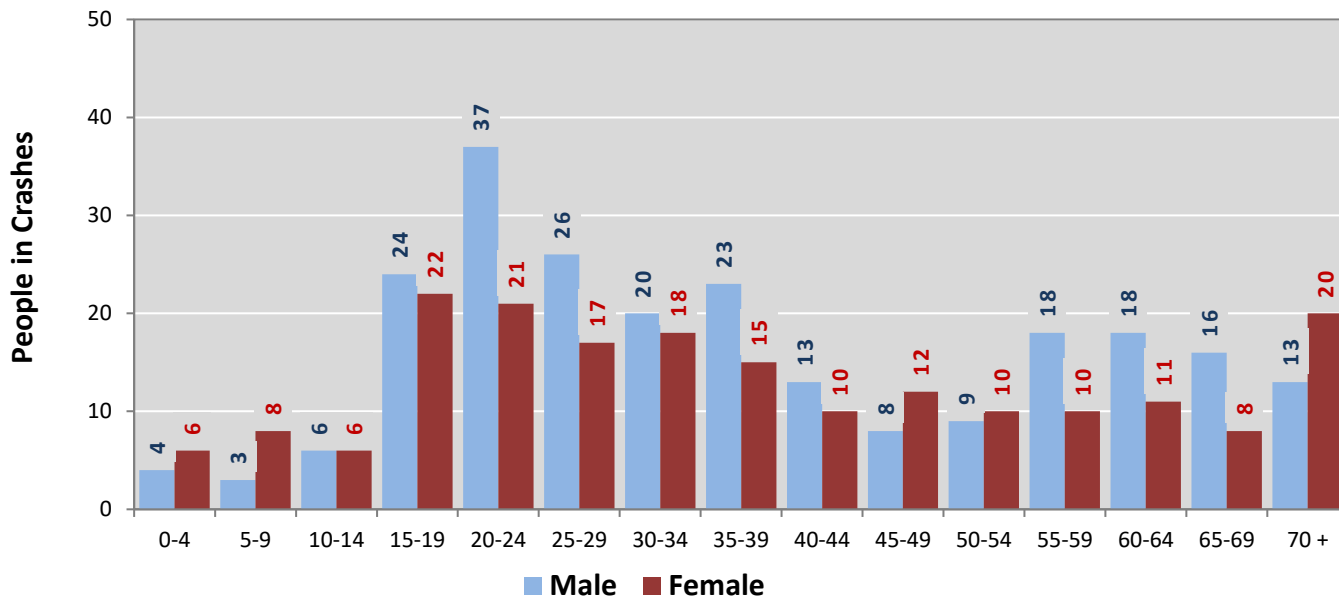
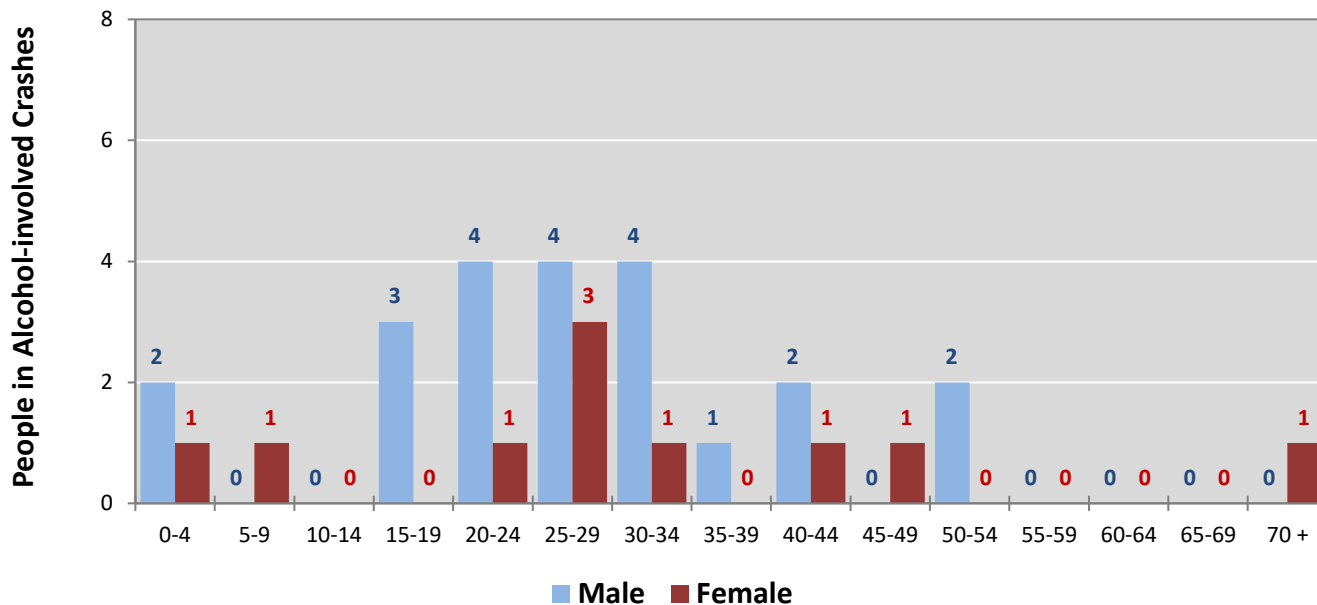


Figure 9: People in Crashes by Age Group and Sex in Socorro County, 2017



* In 2017, Socorro County had 30 people in crashes for which age or sex data were missing.

Figure 10: People in Alcohol-involved Crashes by Age Group and Sex in Socorro County, 2017



* In 2017, Socorro County had 2 people in alcohol-involved crashes for which age or sex data were missing.

Table 18: Pedestrians and Pedalcyclists in Crashes by Age Group in Socorro County, 2013-2017

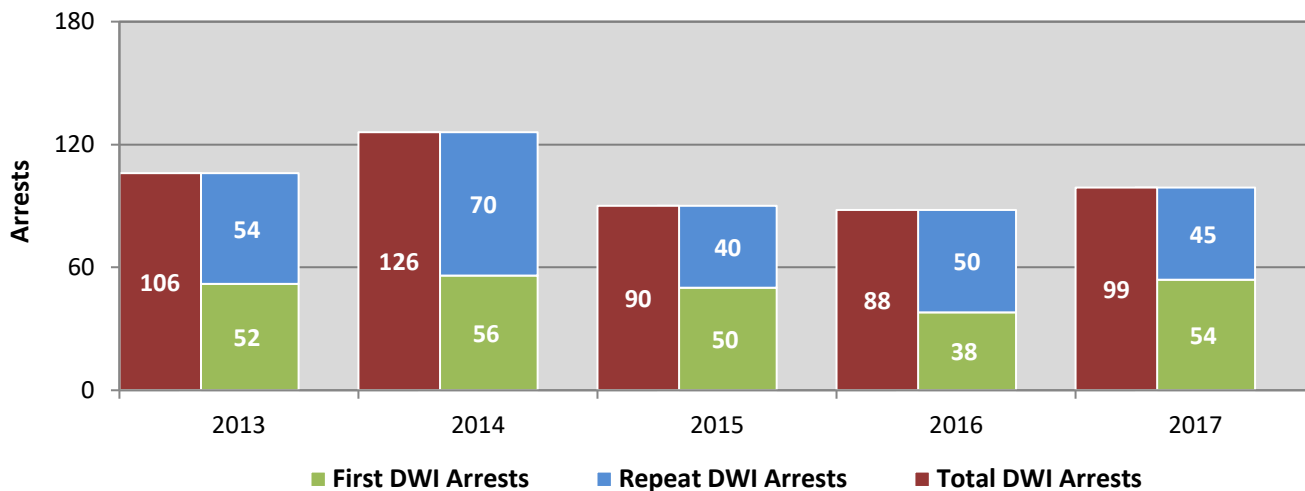
Age Groups	Pedestrians and Pedalcyclists ¹ in Crashes					5-Year Total People
	2013	2014	2015	2016	2017	
0-4	0	0	0	0	0	0
5-9	1	0	0	0	0	1
10-14	0	0	0	0	0	0
15-19	0	0	1	0	0	1
20-24	1	1	2	2	2	8
25-29	1	0	0	1	1	3
30-34	0	1	0	1	0	2
35-39	0	0	0	1	0	1
40-44	0	0	0	0	0	0
45-49	1	0	0	1	1	3
50-54	0	1	1	0	2	4
55-59	1	0	0	0	0	1
60-64	0	0	1	1	0	2
65-69	1	0	0	0	0	1
70 +	0	1	0	1	0	2
Missing Data	2	1	0	0	0	3
Total People	8	5	5	8	6	32

Table 19: Pedestrians and Pedalcyclists in Crashes by Alcohol Involvement and Severity of Injuries in Socorro County, 2017

Alcohol Involvement	Pedestrians and Pedalcyclists ¹ in Crashes					Total People
	Fatalities (Class K)	Suspected Serious Injuries (Class A)	Suspected Minor Injuries (Class B)	Possible Injuries (Class C)	No Apparent Injury (Class O)	
Total Pedalcyclists	0	0	3	0	1	4
Involved	0	0	0	0	0	0
Not Involved	0	0	3	0	1	4
Total Pedestrians	0	1	1	0	0	2
Involved	0	1	1	0	0	2
Not Involved	0	0	0	0	0	0
Total People	0	1	4	0	1	6

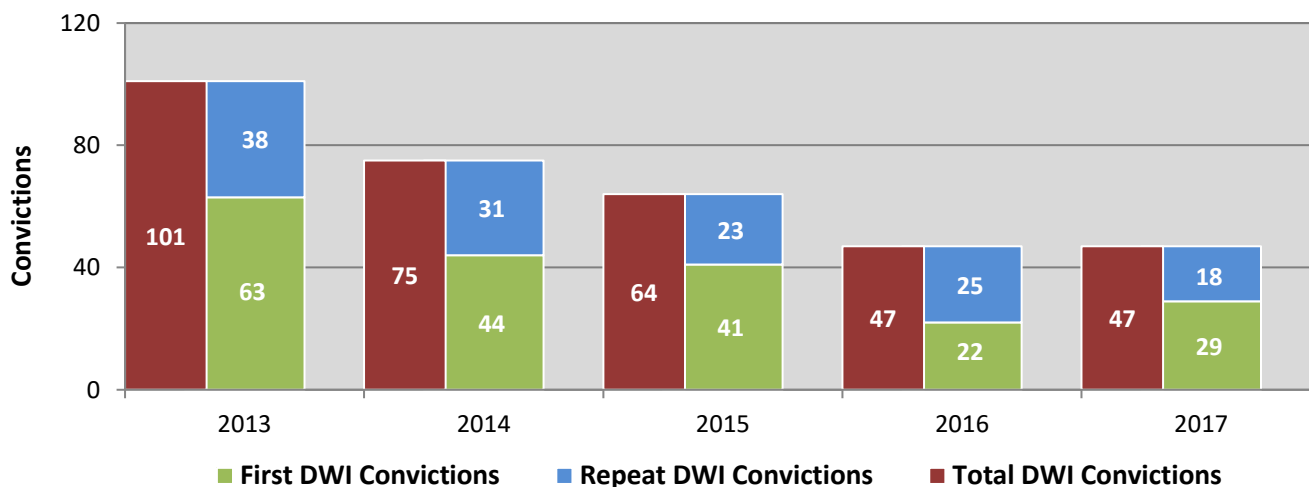
¹ Pedestrians and pedalcyclists are counted as non-motorized vehicles, when involved in a crash with a motor vehicle.

**Figure 11: DWI Arrests in Socorro County,
Showing First and Repeat DWI Arrests, 2013-2017**



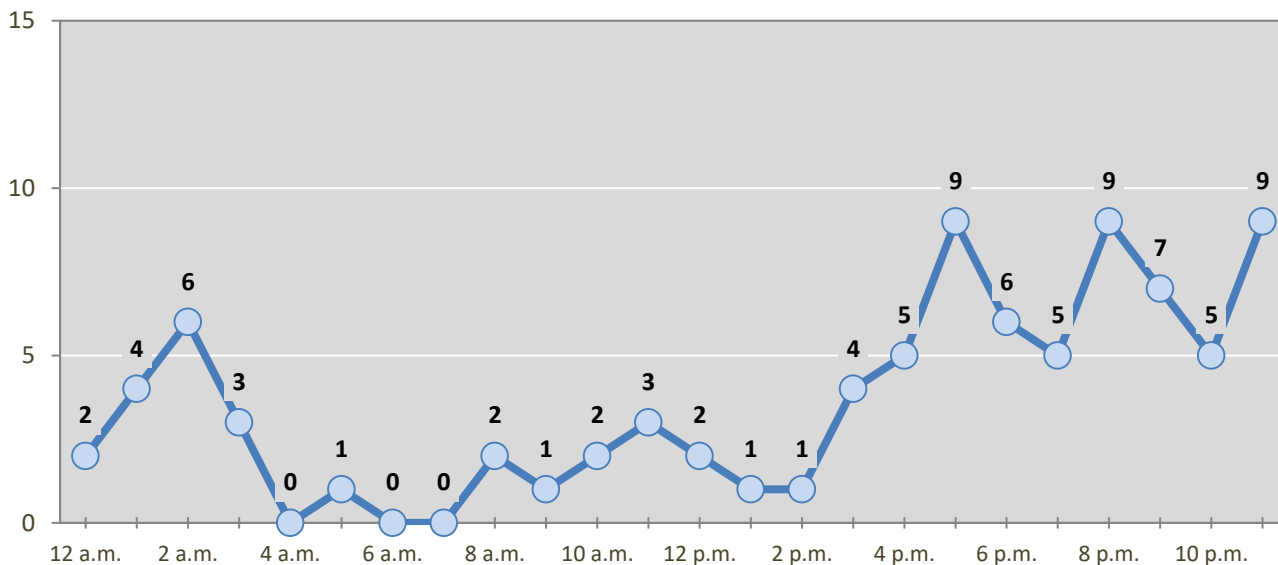
*Values are based upon the year of the arrest.

**Figure 12: DWI Convictions in Socorro County,
Showing First and Repeat DWI Convictions, 2013-2017**



*Values are based upon the year of the conviction.

Figure 13: DWI Arrests by Hour in Socorro County, 2017



* In 2017, Socorro County had 12 arrests for which hour data were missing.

Table 20: DWI Arrests by Day of Week in Socorro County, 2013-2017

Day of Week	Year					5-Year Average
	2013	2014	2015	2016	2017	
Sunday	23	21	16	13	15	18
Monday	7	14	5	14	15	11
Tuesday	6	12	4	9	6	7
Wednesday	18	13	11	11	9	12
Thursday	10	13	21	5	17	13
Friday	17	22	15	18	19	18
Saturday	25	31	18	18	18	22
Total Arrests	106	126	90	88	99	102

Table 21: Driver First DWI Arrests by Age Group in Socorro County, 2013-2017

Age Groups	Driver First DWI Arrests ¹				
	2013	2014	2015	2016	2017
15-19	3	8	4	1	2
20-24	7	11	9	10	10
25-29	15	7	3	8	13
30-34	6	6	10	5	9
35-39	4	6	6	0	8
40-44	2	6	2	4	2
45-49	2	5	4	4	1
50-54	7	1	5	0	3
55-59	3	2	4	4	4
60-64	0	2	1	1	0
65-69	2	1	2	1	0
70 +	1	1	0	0	2
Missing Data	0	0	0	0	0
Total Drivers	52	56	50	38	54

¹ Values are based upon the year of the arrest.

Table 22: Driver Repeat DWI Arrests by Age Group in Socorro County, 2013-2017

Age Groups	Driver Repeat DWI Arrests ¹				
	2013	2014	2015	2016	2017
15-19	0	0	1	0	0
20-24	2	4	1	0	4
25-29	7	6	4	9	2
30-34	10	11	9	4	3
35-39	6	10	5	8	8
40-44	7	14	8	7	6
45-49	9	7	5	6	8
50-54	7	5	4	9	5
55-59	2	8	1	2	5
60-64	2	3	1	4	2
65-69	2	1	1	0	2
70 +	0	0	0	1	0
Missing Data	0	1	0	0	0
Total Drivers	54	70	40	50	45

¹ Values are based upon the year of the arrest.

Table 23: Driver First DWI Convictions by Age Group in Socorro County, 2013-2017

Age Groups	Driver First DWI Convictions ¹				
	2013	2014	2015	2016	2017
15-19	3	5	4	0	0
20-24	9	3	8	5	5
25-29	9	8	5	1	5
30-34	5	8	3	5	3
35-39	7	3	5	2	3
40-44	8	3	3	2	5
45-49	7	4	4	2	1
50-54	12	4	3	0	0
55-59	2	3	0	5	3
60-64	0	1	3	0	0
65-69	0	2	2	0	2
70 +	1	0	1	0	2
Missing Data	0	0	0	0	0
Total Drivers	63	44	41	22	29

¹ Values are based upon the year of the conviction.

Table 24: Driver Repeat DWI Convictions by Age Group in Socorro County, 2013-2017

Age Groups	Driver Repeat DWI Convictions ¹				
	2013	2014	2015	2016	2017
15-19	0	0	0	1	0
20-24	1	1	1	0	0
25-29	5	4	1	5	0
30-34	6	7	3	2	1
35-39	4	0	3	1	7
40-44	5	8	6	4	4
45-49	6	4	2	4	1
50-54	8	2	1	6	4
55-59	1	3	4	0	0
60-64	1	2	1	2	1
65-69	1	0	0	0	0
70 +	0	0	0	0	0
Missing Data	0	0	1	0	0
Total Drivers	38	31	23	25	18

¹ Values are based upon the year of the conviction.

Table 25: Court Disposition of DWI Arrests for Socorro County and the State, 2017

Court Disposition of DWI Arrest ¹	Socorro County	Statewide	Percent of Statewide
Total DWI Arrests	99	10,501	0.9%
DWI Arrests Resulting in Convictions	50	5,533	0.9%
DWI Arrests Resulting in Dismissals ²	19	1,426	1.3%
DWI Arrests Awaiting Disposition	30	3,542	0.8%

¹ These are the number of DWI arrests in 2017 and whether the case resulted in a conviction or dismissal, or is still awaiting court disposition, as reported in the NM MVD Citation Tracking System (CTS) as of February 2019.

² For this table, a very small number of "not guilty" rulings may be included in the category Dismissals.

Table 26: Average Number of Days from Date of DWI Arrest to Date of Court Disposition in Socorro County and the State, 2017

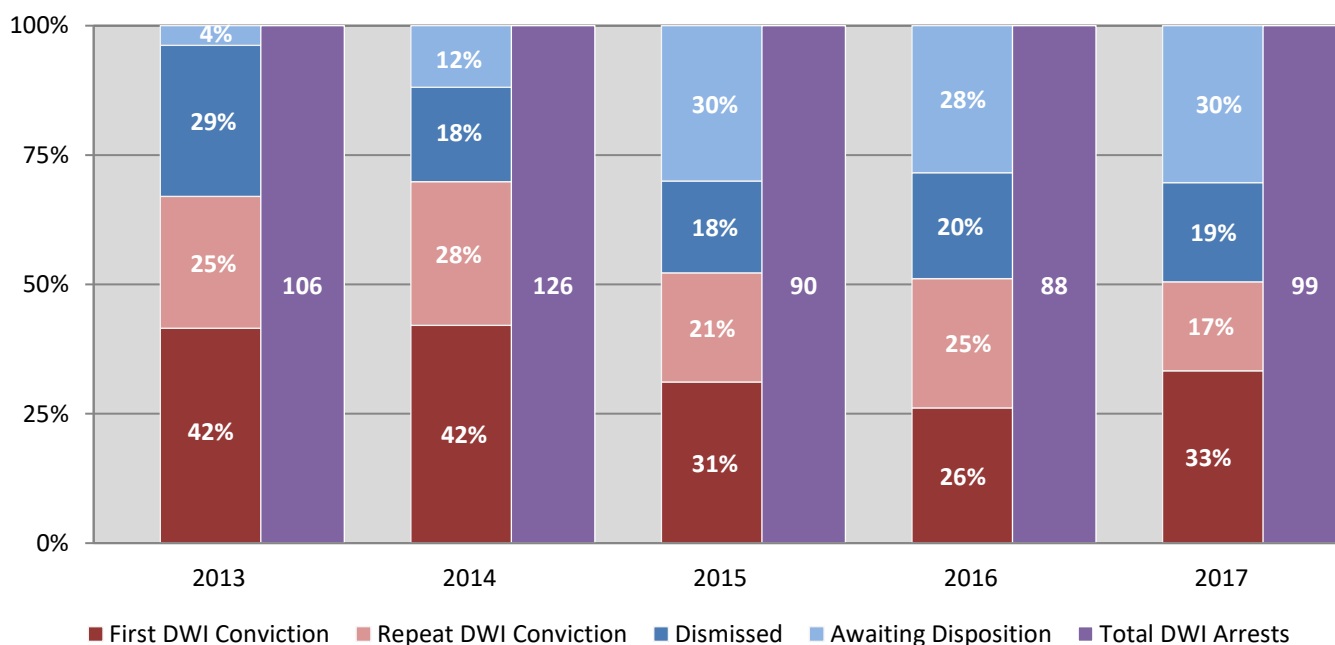
Court Disposition	Average Number of Days		Deviation from Statewide Average
	Socorro County	Statewide	
DWI Conviction	138	166	-28
DWI Dismissal	246	175	71

Table 27: Court Disposition of DWI Arrests in Socorro County, 2013-2017

Year of DWI Arrest ¹	Court Disposition				Total DWI Arrests
	First DWI Conviction	Repeat DWI Conviction	Dismissed	Awaiting Disposition	
2013	44	27	31	4	106
2014	53	35	23	15	126
2015	28	19	16	27	90
2016	23	22	18	25	88
2017	33	17	19	30	99

¹ Values are based upon the year of the arrest.

Figure 14: Court Dispositions by Percentage of DWI Arrests in Socorro County, 2013-2017



*Table 27 contains the values used to calculate percentages shown in Figure 14.