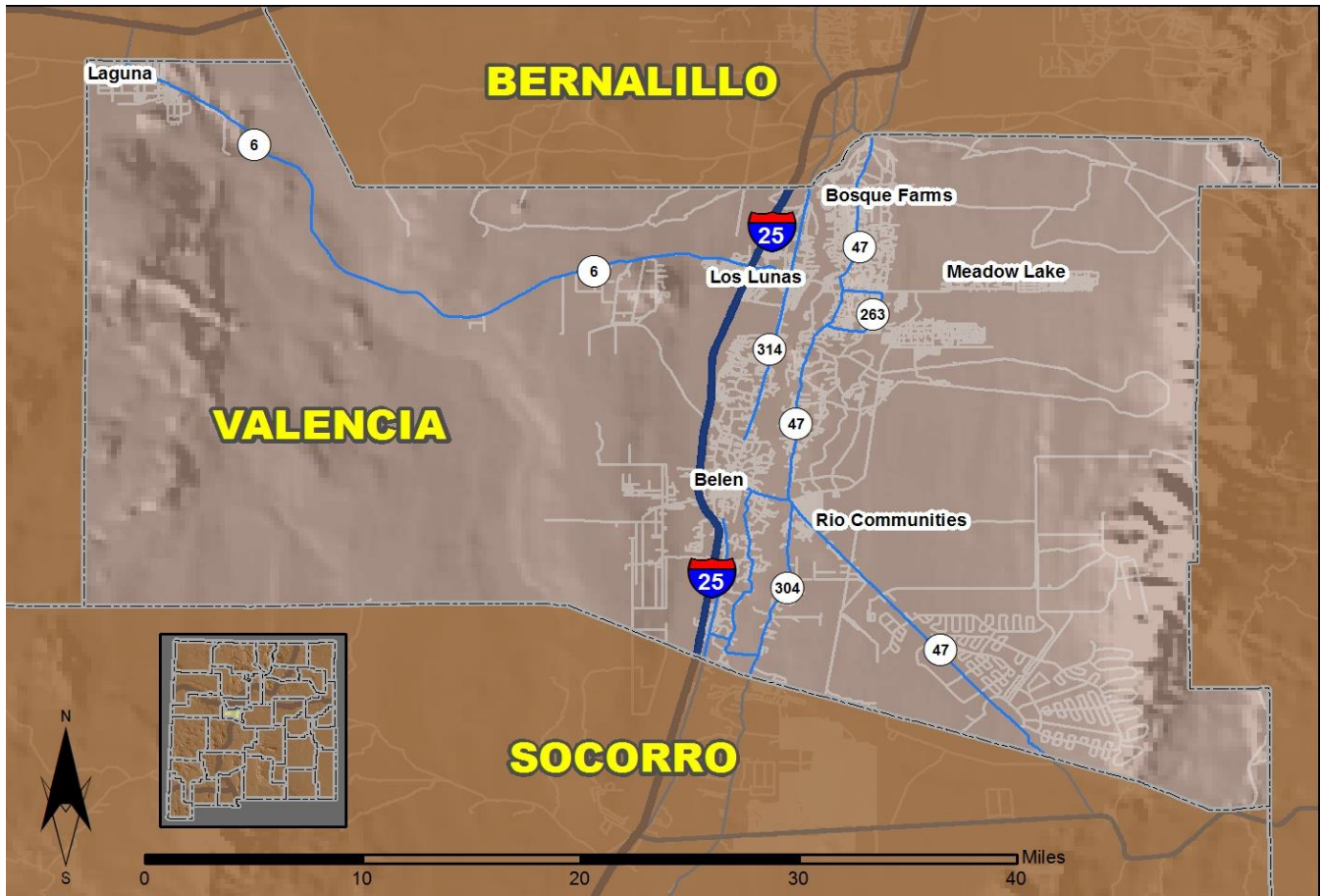


2017 Community Report

Valencia County



Produced for the New Mexico Department of Transportation,
Traffic Safety Division, Traffic Records Bureau,
Under Contract 6093 by the University of New Mexico,
Geospatial and Population Studies, Traffic Research Unit

Distributed in compliance with New Mexico Statute 66-7-214
as a reference source regarding New Mexico traffic crashes

For the purposes of this report, data are compiled by the University of New Mexico, Geospatial and Population Studies, Traffic Research Unit (TRU), on behalf of the New Mexico Department of Transportation (NMDOT). Data in this report may differ from that in other data sources, such as the Federal Fatality Analysis Reporting System (FARS), due to the timing of publications and rules for how data are compiled and maintained in Federal vs. State databases. If you have questions regarding this report, please contact the Traffic Safety Division at 505-827-0427.

<http://tru.unm.edu/Crash-Reports/Community-Reports/>

Definitions

Aggravated DWI – A driver arrested for 1) driving with a BAC of 0.16 or higher, 2) driving under the influence of alcohol or drugs and causing bodily injury to a human being as a result, or 3) driving under the influence of alcohol or drugs and refusing to submit to a BAC test at the time of arrest for DWI.

Alcohol-involved Crash – A crash for which the Uniform Crash Report indicated that 1) a DWI citation was issued, 2) alcohol was a contributing factor, or 3) a person in control of a vehicle (including a pedestrian or pedalcyclist) was suspected of being under the influence of alcohol.

Alcohol-involved Driver – A person in control of a vehicle who was cited for DWI or indicated on the Uniform Crash Report as being either suspected or determined by testing to be under the influence of alcohol. There can be multiple alcohol-involved drivers in a single alcohol-involved crash.

Crash – A reported incident on a public roadway involving one or more motor vehicles that resulted in death, personal injury, or at least \$500 in property damage. Crashes on private property (such as a parking lot) are not included.

DWI Arrest (Citation) – In this report, a DWI arrest (a.k.a. a DWI citation) is a driver arrested for either DWI or aggravated DWI. New Mexico’s legal limit for presumption of driving while intoxicated (DWI) is 0.08 for non-commercial drivers older than 21 years of age, 0.04 for commercial vehicle drivers, and 0.02 for drivers younger than 21 years of age.

DWI Conviction – A driver convicted of driving under the intoxicating influence of alcohol, narcotics, or pathogenic drugs, including aggravated DWI.

Fatal Crash – A crash in which at least one person was killed. More than one person can be killed in a single fatal crash.

Fatalities – The number of people killed in a crash. The terms “killed” and “deaths” are synonymous with “fatalities.” A fatality is crash-related if it occurs at the time of the crash or if the person(s) involved in the crash dies within 30 days.

Injury Crash – A reported crash in which at least one person was injured. Injury crashes involve at least one suspected serious injury (Class A), suspected minor injury (Class B), or possible injury (Class C). Fatal crashes are not included.

Missing Data – An indication that the applicable field on the UCR form was left blank or contained an invalid code. Starting with crashes that occurred in 2012, improvements in the identification of missing data in the NMDOT crash database led to an increase in the reported amount of missing data.

Pedalcyclist – A person riding a mechanism of transport that is powered solely by pedals (a.k.a. bicyclist).

Pedestrian – A person on foot, walking, running, jogging, hiking, sitting or lying down who is involved in a motor vehicle traffic crash.

Sources

Crash Data – New Mexico Department of Transportation, Traffic Safety Division, Traffic Records Bureau, Traffic Crash Database, as of the report date below. Crash data are compiled using NMDOT Uniform Crash Reports (UCR), submitted by law enforcement agencies in the state, for any incident on a public roadway involving one or more motor vehicles that resulted in death, injury, or at least \$500 in property damage. These reports are processed by the NMDOT Traffic Records Bureau and analyzed by the University of New Mexico, Geospatial and Population Studies, Traffic Research Unit (TRU).

DWI Citation Tracking System (CTS) – New Mexico Taxation and Revenue Department (NM TRD), Motor Vehicle Division (MVD), DWI Citation Tracking System (CTS), as of February 2019. Repeat offenders are identified by the combination of account key, arrest date, and citation number. County data are based upon the county where the arrest took place. City data are based upon the city where the offender resides.

Urban Areas – New Mexico Department of Transportation, Asset Management and Planning, 2010 U.S. Census Urbanized Area Boundaries, NMDOT-Adjusted, and U.S. Census Urban Clusters, August 21, 2013. In crashes before 2013, “urban” was defined as a town or city with a population of at least 2,500 people.

Table 1: Total Crashes and Alcohol-involved Crashes by Crash Severity in Valencia County, 2008-2017

Year	Total Crashes				Alcohol-involved Crashes			
	Fatal	Injury	Property Damage Only	Total	Fatal	Injury	Property Damage Only	Total
2008	9	276	565	850	6	19	26	51
2009	5	324	786	1,115	3	24	41	68
2010	11	285	623	919	4	19	17	40
2011	10	251	603	864	2	17	29	48
2012	10	125	225	360	4	11	8	23
2013	2	211	435	648	1	14	8	23
2014	10	206	448	664	7	17	10	34
2015	5	375	742	1,122	3	26	29	58
2016	7	428	736	1,171	0	25	31	56
2017	12	421	697	1,130	3	29	21	53

Figure 1: Alcohol-involved Fatal and Injury Crashes Compared with Non-alcohol-involved Fatal and Injury Crashes in Valencia County, 2008-2017

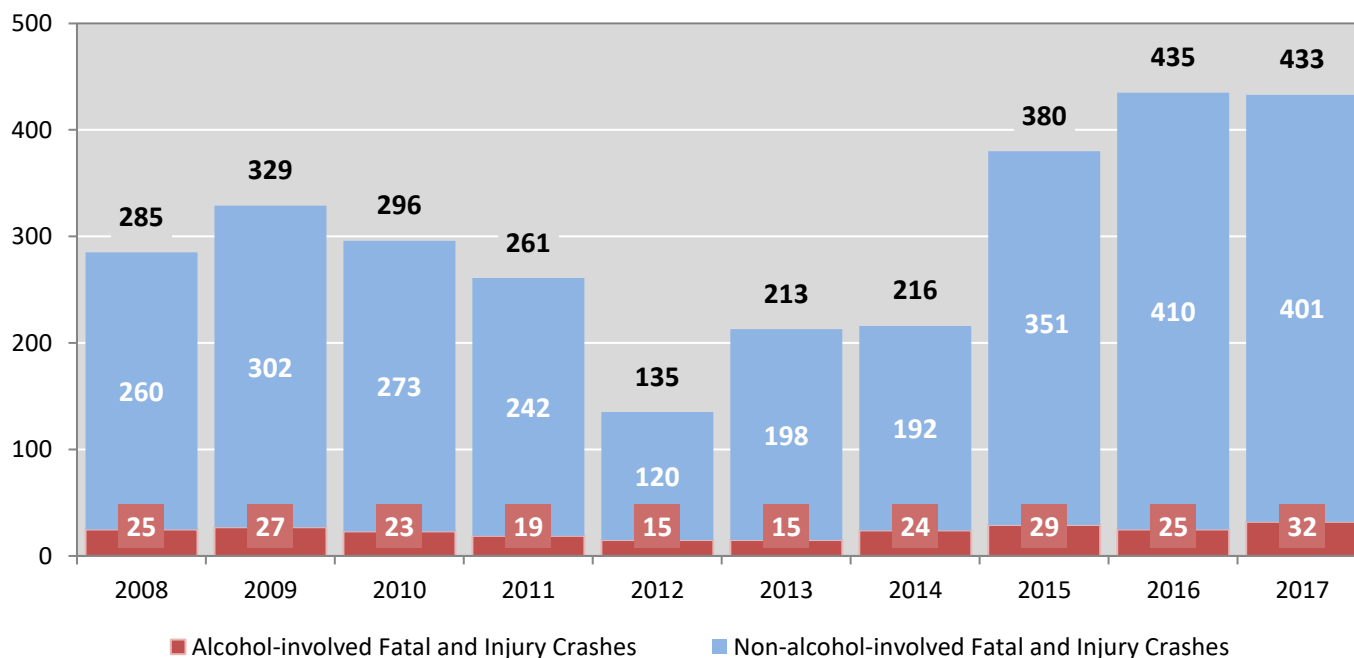


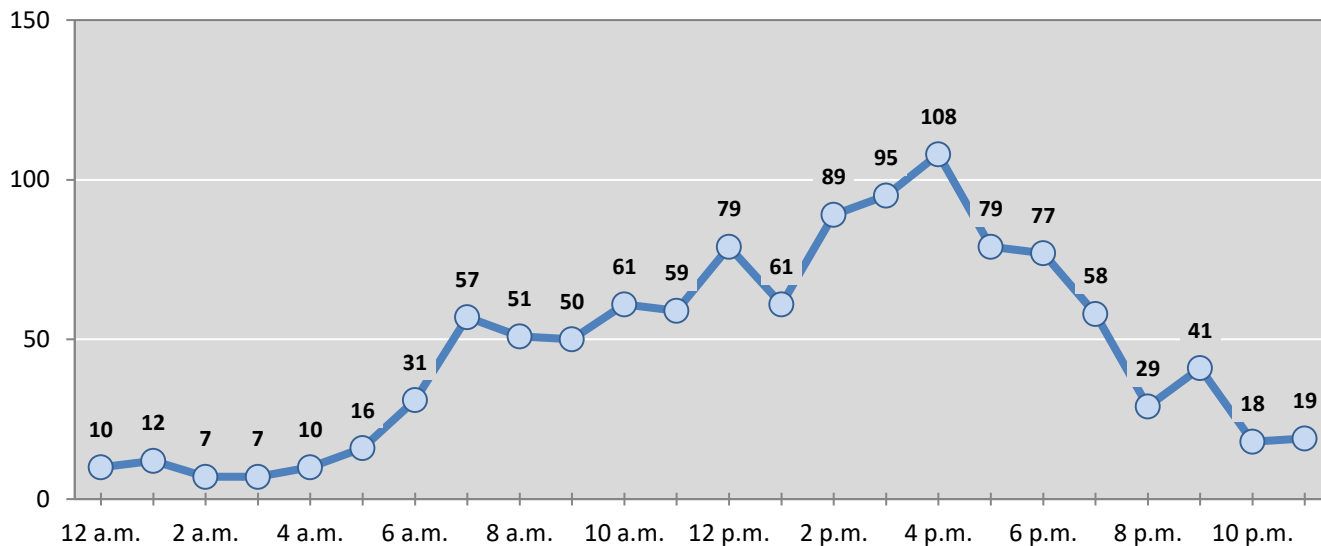
Table 2: Crashes by Month in Valencia County, 2013-2017

Month	Crashes					5-Year Average
	2013	2014	2015	2016	2017	
January	53	50	97	78	103	76
February	52	40	102	81	63	68
March	69	35	80	105	97	77
April	63	56	92	101	89	80
May	55	60	75	90	95	75
June	53	44	80	89	76	68
July	41	59	99	102	92	79
August	59	54	100	112	110	87
September	46	48	85	106	81	73
October	52	65	88	103	104	82
November	49	54	121	115	105	89
December	56	99	103	89	115	92
Total Crashes	648	664	1,122	1,171	1,130	947

Table 3: Alcohol-involved Crashes by Month in Valencia County, 2013-2017

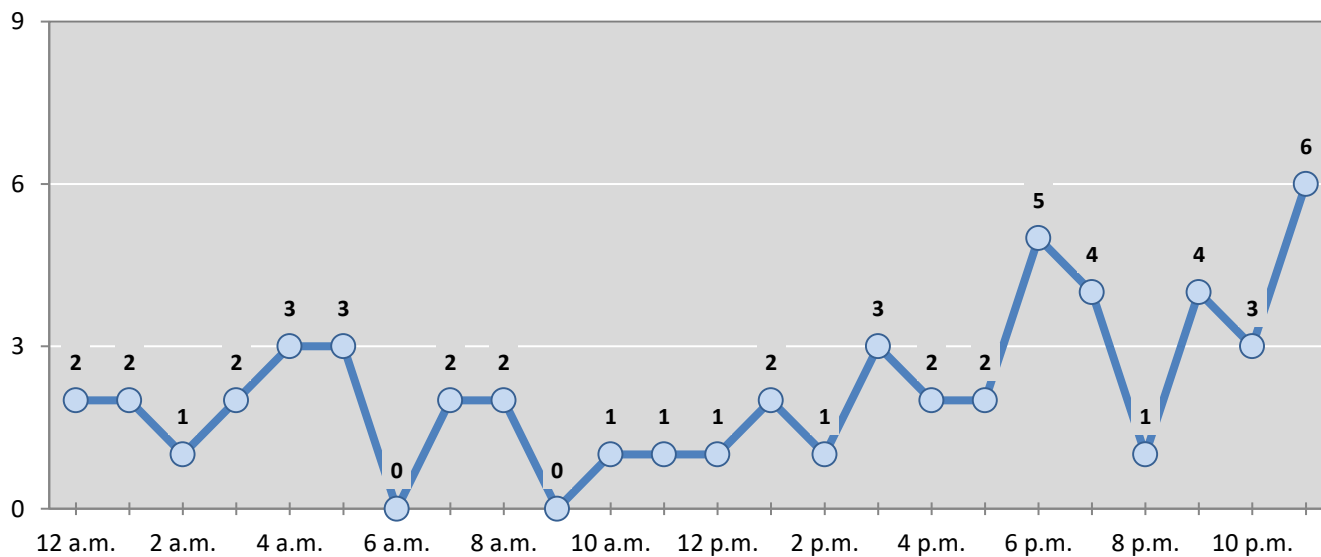
Month	Alcohol-involved Crashes					5-Year Average
	2013	2014	2015	2016	2017	
January	1	2	9	2	5	4
February	0	1	6	2	5	3
March	3	2	4	5	7	4
April	3	2	3	4	3	3
May	2	3	1	1	3	2
June	2	0	6	6	6	4
July	3	0	6	6	1	3
August	4	7	4	7	4	5
September	3	2	2	8	3	4
October	1	6	5	9	3	5
November	0	5	7	1	9	4
December	1	4	5	5	4	4
Total Crashes	23	34	58	56	53	45

Figure 2: Crashes by Hour in Valencia County, 2017



* In 2017, Valencia County had 12 crashes for which hour data were missing.

Figure 3: Alcohol-involved Crashes by Hour in Valencia County, 2017



* In 2017, Valencia County had 1 alcohol-involved crashes for which hour data were missing.

Table 4: Alcohol-involved Crashes by Day of Week in Valencia County, 2013-2017

Day of Week	Alcohol-involved Crashes					5-Year Average
	2013	2014	2015	2016	2017	
Sunday	2	2	12	14	7	7
Monday	3	3	4	8	5	5
Tuesday	2	8	5	5	8	6
Wednesday	4	3	7	4	3	4
Thursday	2	2	7	7	7	5
Friday	5	10	11	7	9	8
Saturday	5	6	12	11	14	10
Total Crashes	23	34	58	56	53	45

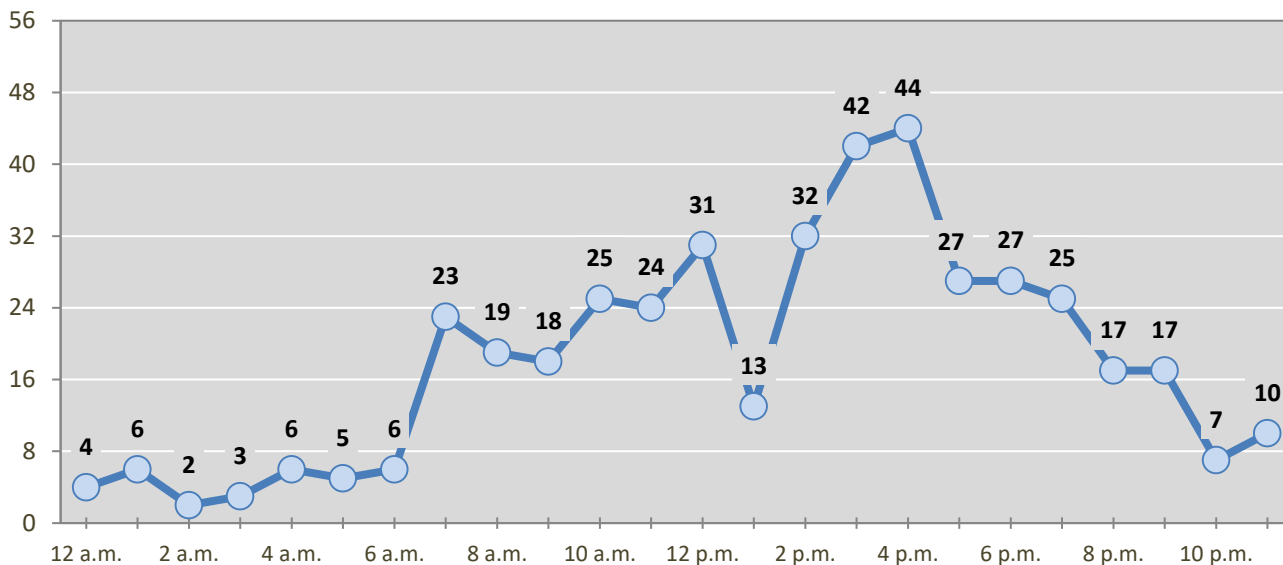
Table 5: Fatal and Injury Crashes by Day of Week in Valencia County, 2013-2017

Day of Week	Fatal and Injury Crashes					5-Year Average
	2013	2014	2015	2016	2017	
Sunday	11	26	37	48	41	33
Monday	36	24	68	72	73	55
Tuesday	33	29	56	59	56	47
Wednesday	36	34	56	61	63	50
Thursday	23	30	61	75	56	49
Friday	43	39	51	72	76	56
Saturday	31	34	51	48	68	46
Total Crashes	213	216	380	435	433	335

Table 6: Pedestrian and Pedalcyclist Crashes by Day of Week in Valencia County, 2013-2017

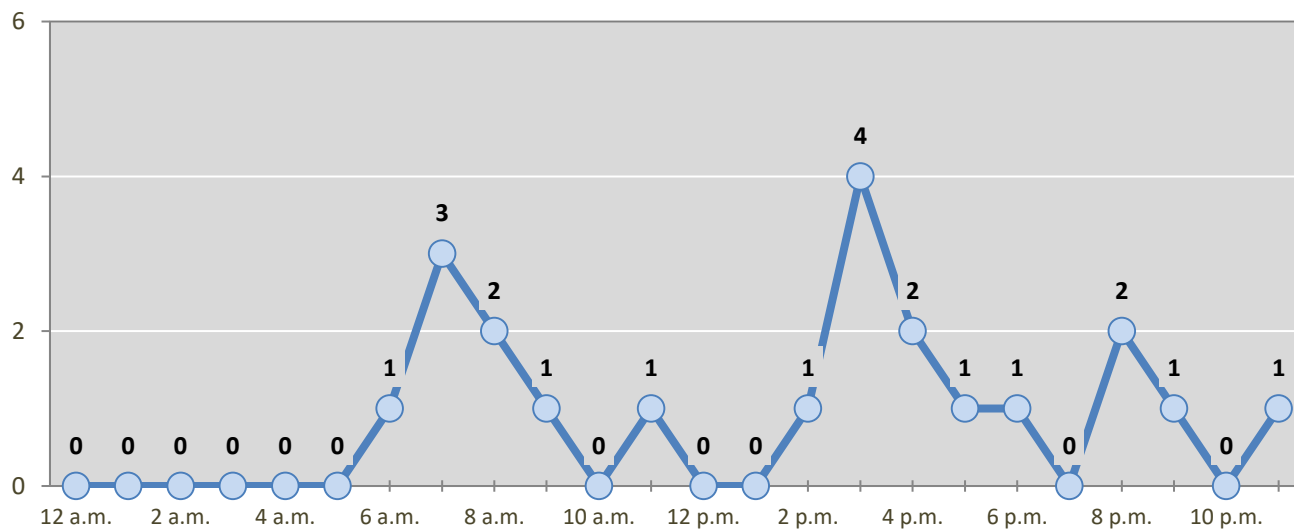
Day of Week	Pedestrian and Pedalcyclist Crashes					5-Year Average
	2013	2014	2015	2016	2017	
Sunday	0	0	4	1	1	1
Monday	3	3	2	1	1	2
Tuesday	1	2	1	3	4	2
Wednesday	2	3	1	2	6	3
Thursday	1	2	3	2	4	2
Friday	2	2	0	5	3	2
Saturday	1	2	3	2	2	2
Total Crashes	10	14	14	16	21	15

Figure 4: Fatal and Injury Crashes by Hour in Valencia County, 2017



* In 2017, Valencia County had 0 crashes for which hour data were missing.

Figure 5: Pedestrian and Pedalcyclist Crashes by Hour in Valencia County, 2017



* In 2017, Valencia County had 0 crashes for which hour data were missing.

Table 7: Severity of Injuries to People in Crashes by Rural and Urban Location in Valencia County, 2017

Urban and Rural Locations by Alcohol-involvement	People in Crashes by Severity of Injuries					Total People
	Fatalities (Class K)	Suspected Serious Injuries (Class A)	Suspected Minor Injuries (Class B)	Possible Injuries (Class C)	No Apparent Injuries (Class O)	
People in Alcohol-involved Crashes	3	5	20	15	48	91
Urban	1	5	19	15	43	83
Rural Non-Interstate	2	0	1	0	5	8
Rural Interstate	0	0	0	0	0	0
People in Crashes	12	45	174	417	2,336	2,984
Urban	8	39	160	393	2,203	2,803
Rural Non-Interstate	4	5	13	20	121	163
Rural Interstate	0	1	1	4	12	18
Percent in Alcohol-involved Crashes	25%	11%	11%	4%	2%	3%

Table 8: Total Crashes by Roadway System and Crash Severity in Valencia County, 2013-2017

Crash Severity by System	Crashes by Year					5-Year Average
	2013	2014	2015	2016	2017	
Total Rural Interstate	2	1	7	6	10	5
Fatal Crash	0	0	0	0	0	0
Injury Crash	0	0	2	5	4	2
Property Damage Only Crash	2	1	5	1	6	3
Total Rural Non-Interstate	21	14	67	53	76	47
Fatal Crash	2	2	1	0	4	2
Injury Crash	4	4	23	22	25	16
Property Damage Only Crash	15	8	43	31	47	29
Total Urban	625	649	1,048	1,112	1,044	895
Fatal Crash	0	8	4	7	8	5
Injury Crash	207	202	350	401	392	310
Property Damage Only Crash	418	439	694	704	644	580

Table 9: Total Crashes by Crash Classification in Valencia County, 2013-2017

Crash Classification	Total Crashes by Year					5-Year Average
	2013	2014	2015	2016	2017	
Animal	30	19	24	19	76	34
Fixed Object	45	40	36	37	77	47
Other (Non-Collision)	2	6	2	3	8	4
Other (Object)	11	4	12	4	11	8
Other Vehicle	240	217	240	287	371	271
Overturn/Rollover	17	18	2	12	63	22
Parked Vehicle	9	13	13	6	15	11
Pedalcyclist	3	4	8	4	4	5
Pedestrian	4	4	4	6	5	5
Railroad Train	0	0	0	0	0	0
Rollover	0	0	11	5	5	4
Vehicle on Other Road	3	0	5	1	0	2
Missing Data	8	2	0	1	0	2
Total Crashes	372	327	357	385	635	415

Table 10: Vehicles in Crashes by Vehicle Type in Valencia County, 2013-2017

Vehicle Type ¹	Vehicles in Crashes by Vehicle Type					5-Year Average
	2013	2014	2015	2016	2017	
Bus	4	3	6	10	10	7
Motorcycle	30	32	23	28	46	32
Passenger	573	602	995	1,010	954	827
Pedalcyclist	7	7	5	6	3	6
Pedestrian	3	8	9	12	19	10
Pickup	284	292	482	554	505	423
Semi	25	23	40	43	48	36
Van/SUV/4WD	211	220	343	415	421	322
Other Vehicle	68	12	66	32	4	36
Missing Data	24	44	74	65	45	50
Total Vehicles	1,229	1,243	2,043	2,175	2,055	1,749

¹ Pedestrians and pedalcyclists are counted as non-motorized vehicles, when involved in a crash with a motor vehicle. See Page 17 for data on drivers of non-motorized vehicles in crashes (i.e. pedestrians and pedalcyclists).

Table 11: Motor Vehicle Drivers in Crashes by Vehicle Type and Age Group in Valencia County, 2017

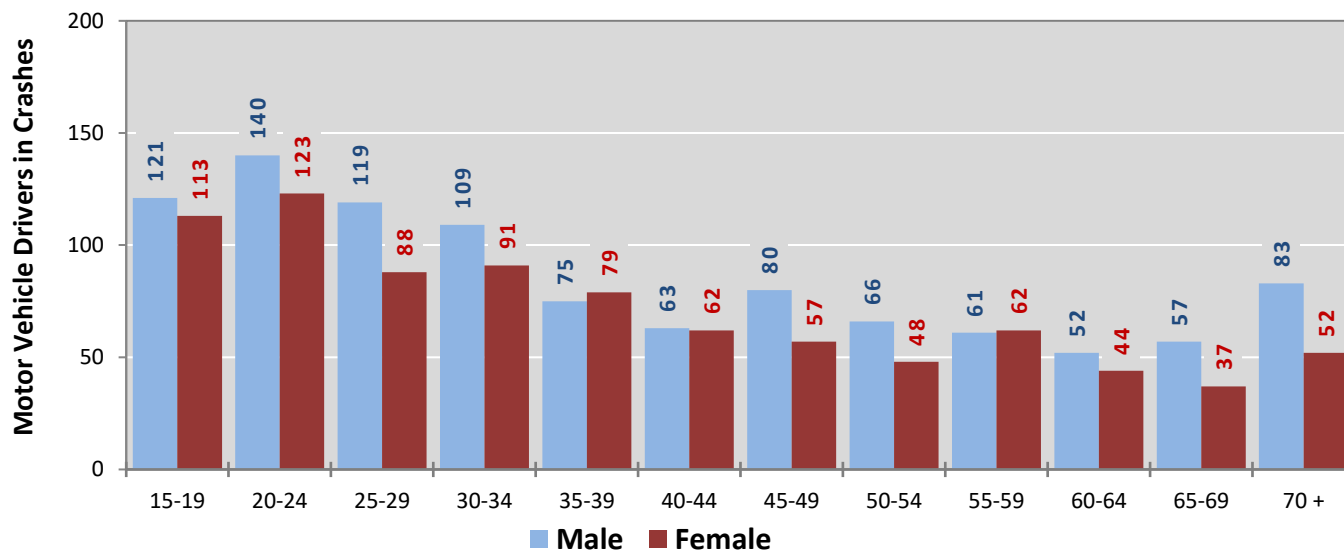
Age Groups	Motor Vehicle ¹ Drivers by Vehicle Type and Age Group								Total Drivers
	Bus	Motor-cycle	Passenger	Pickup	Semi	Van 4WD SUV	Other Vehicle	Missing Data	
15-19	0	8	130	51	0	43	0	2	234
20-24	0	7	160	52	2	39	1	2	263
25-29	0	2	118	41	6	38	0	2	207
30-34	1	2	87	42	9	57	0	2	200
35-39	1	3	75	37	2	36	0	0	154
40-44	0	1	54	37	5	29	0	0	126
45-49	2	2	54	35	6	35	1	2	137
50-54	2	7	37	36	6	25	0	1	114
55-59	1	6	47	36	3	28	1	1	123
60-64	1	4	34	29	2	24	1	1	96
65-69	0	0	40	25	2	27	0	0	94
70 +	2	1	67	35	2	28	0	0	135
Missing Data	0	3	51	49	3	12	0	32	150
Total Drivers	10	46	954	505	48	421	4	45	2,033

Table 12: Alcohol-involved Motor Vehicle Drivers in Crashes by Vehicle Type and Age Group in Valencia County, 2017

Age Groups	Alcohol-involved Motor Vehicle ¹ Drivers by Vehicle Type and Age Group								Total Drivers
	Bus	Motor-cycle	Passenger	Pickup	Semi	Van 4WD SUV	Other Vehicle	Missing Data	
15-19	0	0	3	0	0	1	0	0	4
20-24	0	0	8	2	0	0	0	1	11
25-29	0	0	4	1	0	2	0	0	7
30-34	0	0	4	2	0	0	0	0	6
35-39	0	0	1	1	0	0	0	0	2
40-44	0	0	3	0	0	2	0	0	5
45-49	0	0	3	0	0	0	0	0	3
50-54	0	2	3	0	0	0	0	0	5
55-59	0	2	2	1	0	1	0	0	6
60-64	0	0	0	0	0	0	0	0	0
65-69	0	0	0	1	0	0	0	0	1
70 +	0	0	1	0	0	0	0	0	1
Missing Data	0	0	0	0	0	0	0	0	0
Total Drivers	0	4	32	8	0	6	0	1	51

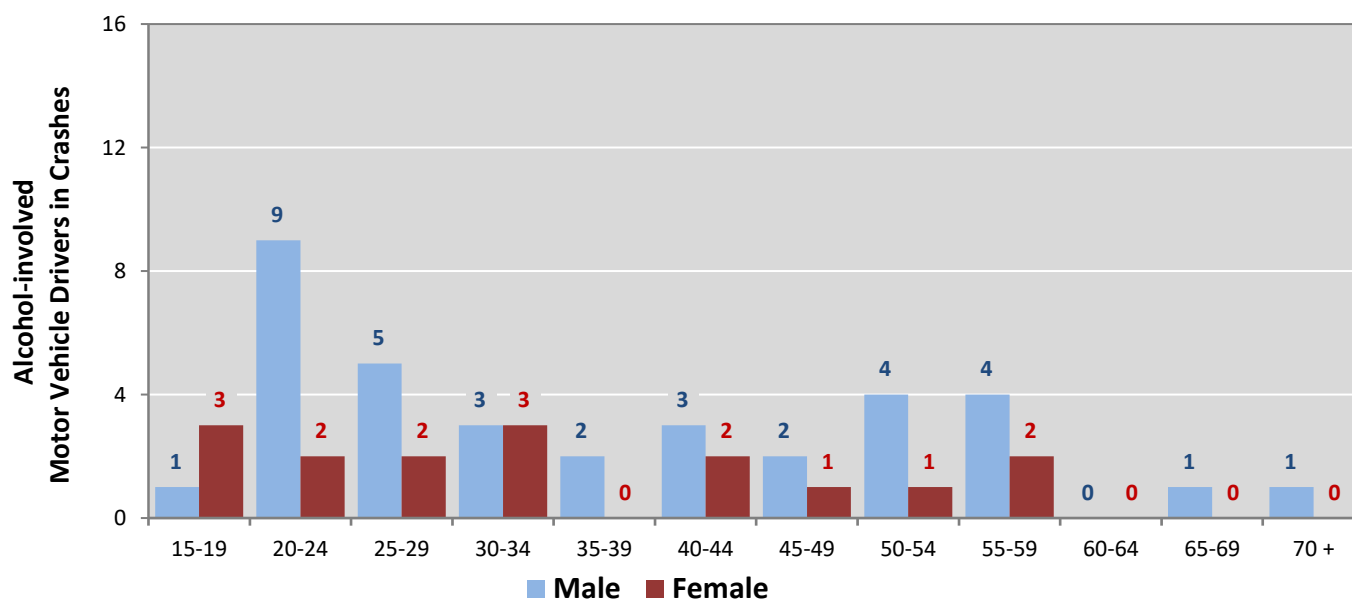
¹ See Page 17 for data on drivers of non-motorized vehicles in crashes (i.e. pedestrians and pedalcyclists).

Figure 6: Motor Vehicle Drivers in Crashes by Age Group and Sex in Valencia County, 2017



* In 2017, Valencia County had 151 drivers in crashes for which age or sex data were missing.

Figure 7: Alcohol-involved Motor Vehicle Drivers in Crashes by Age Group and Sex in Valencia County, 2017



* In 2017, Valencia County had 0 drivers in crashes for which age or sex data were missing.

Table 13: Alcohol-involved Motor Vehicle Drivers Under 21 (Ages 15-20) in Crashes in Valencia County, 2013-2017

Age ¹	Year					5-Year Total
	2013	2014	2015	2016	2017	
15	0	0	0	0	0	0
16	0	0	1	0	0	1
17	0	1	0	0	1	2
18	1	0	1	0	0	2
19	0	0	0	0	0	0
20	0	0	0	0	1	1
Total Drivers	1	1	2	0	2	6

Table 14: Motor Vehicle Drivers Under 21 (Ages 15-20) in Crashes by Age, Sex and Alcohol-involvement in Valencia County, 2017

Age ¹	Total Drivers				Alcohol-involved Drivers			
	Sex		Total Drivers	Percent of Total	Sex		Total Drivers	Percent of Total
	Male	Female			Male	Female		
15	8	5	13	11%	0	0	0	0%
16	12	6	18	16%	0	0	0	0%
17	12	10	22	19%	1	0	1	50%
18	20	6	26	22%	0	0	0	0%
19	12	5	17	15%	0	0	0	0%
20	13	7	20	17%	1	0	1	50%
Total Drivers	77	39	116	100%	2	0	2	100%

¹ For analysis of drivers under age 21, when the driver age or sex are not identified on the crash report (typically hit-and-run drivers), the driver data are considered unreliable and are excluded from the analysis.

**Table 15: Frequency of Contributing Factors in Crashes
by Crash Severity in Valencia County, 2017**

Contributing Factors	Frequency of Contributing Factor ¹ by Crash Severity			
	Frequency in Fatal Crashes	Frequency in Injury Crashes	Frequency in Property Damage Only Crashes	Frequency in All Crashes
Human	23	621	879	1,523
Driver Inattention	1	172	293	466
Failed to Yield Right of Way	1	83	126	210
Other Improper Driving	1	61	70	132
Following Too Closely	0	48	81	129
Excessive Speed	6	64	55	125
Speed Too Fast for Conditions	2	35	40	77
Made Improper Turn	0	20	36	56
Alcohol Involved	3	29	21	53
Drove Left Of Center	3	23	22	48
Avoid No Contact - Vehicle	0	13	21	34
Improper Overtaking	0	13	19	32
Improper Lane Change	0	7	22	29
Disregarded Traffic Signal	1	13	11	25
Improper Backing	0	1	17	18
Passed Stop Sign	0	5	13	18
Avoid No Contact - Other	1	4	9	14
High Speed Pursuit	1	7	5	13
Drug Involved	2	8	3	13
Cell Phone	0	7	5	12
Failed to Yield to Police Vehicle	0	2	5	7
Vehicle Skidded Before Brake	0	3	3	6
Pedestrian Error	1	3	0	4
Failed to Yield to Emergency Vehicle	0	0	1	1
Texting	0	0	1	1
Driverless Moving Vehicle	0	0	0	0
Vehicle	1	31	30	62
Other Mechanical Defect	0	9	13	22
Defective Tires	0	9	9	18
Inadequate Brakes	1	11	6	18
Defective Steering	0	2	2	4
Environment	0	5	2	7
Road Defect	0	2	2	4
Traffic Control Not Functioning	0	2	0	2
Low Visibility Due to Smoke	0	1	0	1
Other	8	326	519	853
None	6	249	401	656
Other - No Driver Error	2	77	118	197

¹ Multiple contributing factors may be reported for any vehicle in a crash.

Table 16: People in Crashes by Crash Classification and Severity of Injuries in Valencia County, 2017

Crash Classification	People in Crashes by Severity of Injuries					Total People
	Fatalities (Class K)	Suspected Serious Injuries (Class A)	Suspected Minor Injuries (Class B)	Possible Injuries (Class C)	No Apparent Injuries (Class O)	
Animal	0	0	0	2	19	21
Fixed Object	2	4	31	20	190	247
Other (Non-Collision)	0	0	6	3	20	29
Other (Object)	0	0	2	8	29	39
Other Vehicle	6	24	99	351	1,975	2,455
Overturn/Rollover	1	10	27	19	40	97
Parked Vehicle	0	0	0	0	31	31
Pedalcyclist	0	1	1	0	6	8
Pedestrian	1	4	3	13	20	41
Railroad Train	1	0	0	0	1	2
Rollover	1	2	4	1	3	11
Vehicle on Other Road	0	0	1	0	1	2
Missing Data	0	0	0	0	1	1
Total People	12	45	174	417	2,336	2,984

Table 17: Killed or Injured Unbelted People in Crashes by Sex and Age Group in Valencia County, 2017

Age Groups	Unbelted People Killed or Injured ^{1,2}				Total People
	Male	Percent of Male	Female	Percent of Female	
0-4	0	0%	0	0%	0
5-9	2	11%	2	15%	4
10-14	1	6%	0	0%	1
15-19	3	17%	4	31%	7
20-24	3	17%	2	15%	5
25-29	3	17%	1	8%	4
30-34	2	11%	2	15%	4
35-39	0	0%	1	8%	1
40-44	1	6%	1	8%	2
45-49	1	6%	0	0%	1
50-54	2	11%	0	0%	2
55-59	0	0%	0	0%	0
60-64	0	0%	0	0%	0
65-69	0	0%	0	0%	0
70 +	0	0%	0	0%	0
Missing Data	0	0%	0	0%	0
Total People	18	100%	13	100%	31

¹ People injured are in one of three categories: suspected serious injury, suspected minor injury, or possible injury.

² Excludes people in or on buses, heavy trucks, motorcycles, or ATVs.

Figure 8: Seatbelt Use by People in Crashes with Fatal or Suspected Serious Injuries in Valencia County, 2013-2017

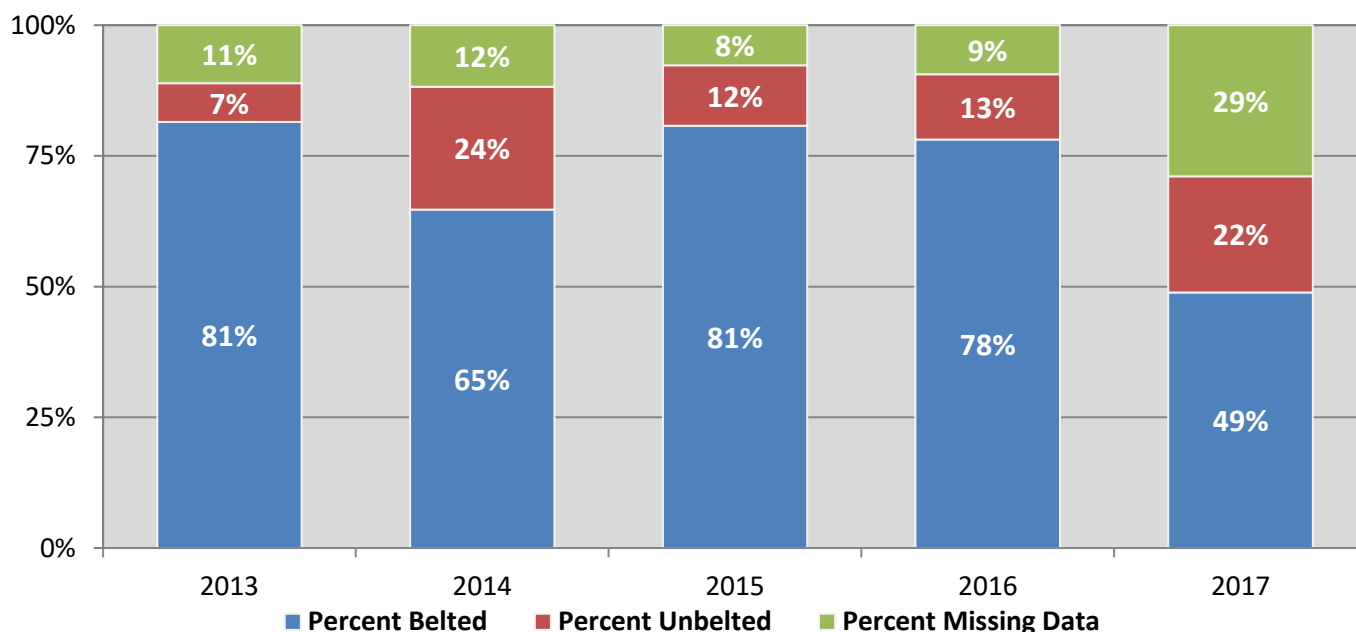
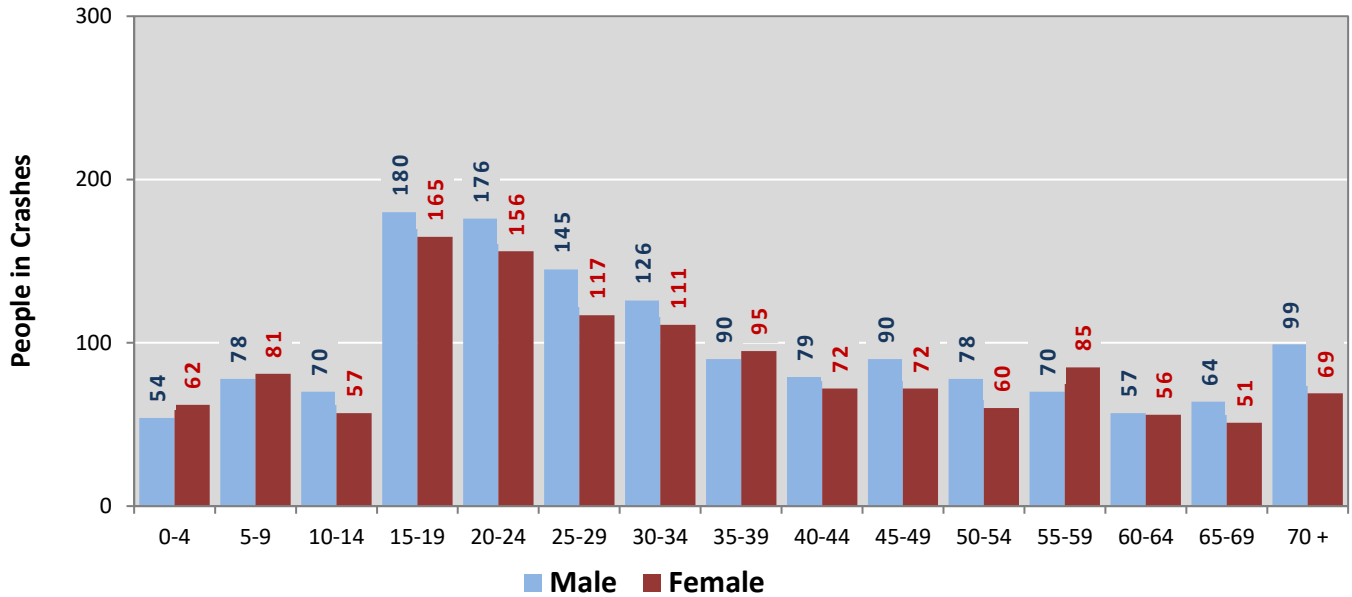
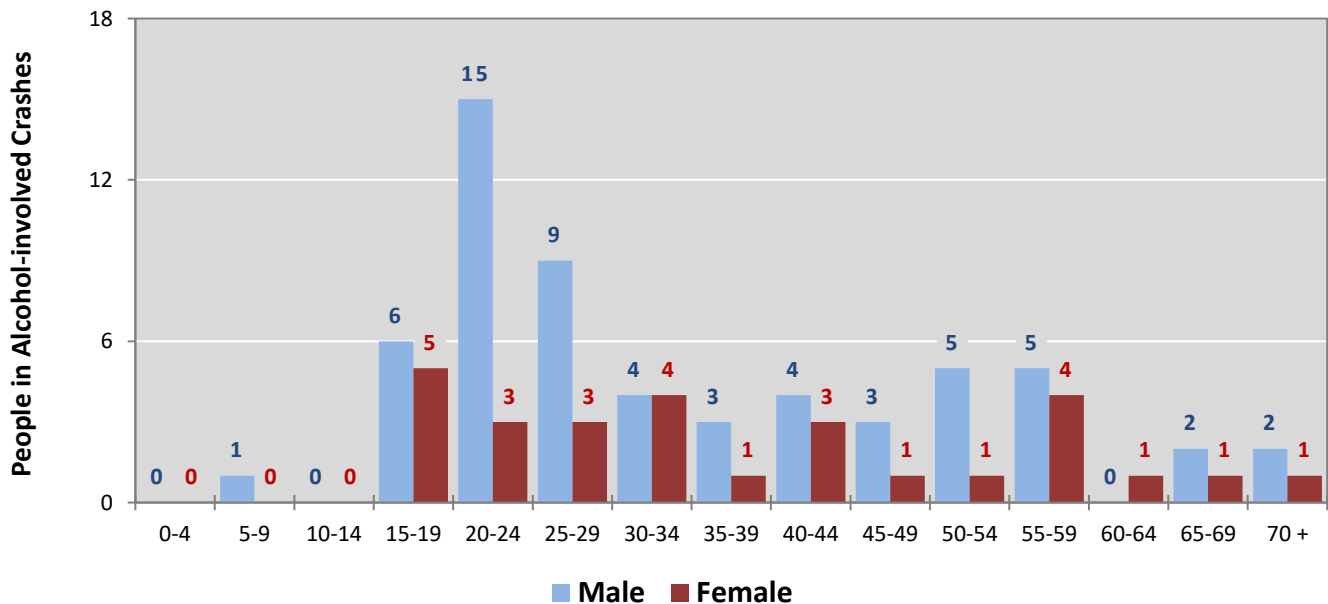


Figure 9: People in Crashes by Age Group and Sex in Valencia County, 2017



* In 2017, Valencia County had 348 people in crashes for which age or sex data were missing.

Figure 10: People in Alcohol-involved Crashes by Age Group and Sex in Valencia County, 2017



* In 2017, Valencia County had 4 people in alcohol-involved crashes for which age or sex data were missing.

Table 18: Pedestrians and Pedalcyclists in Crashes by Age Group in Valencia County, 2013-2017

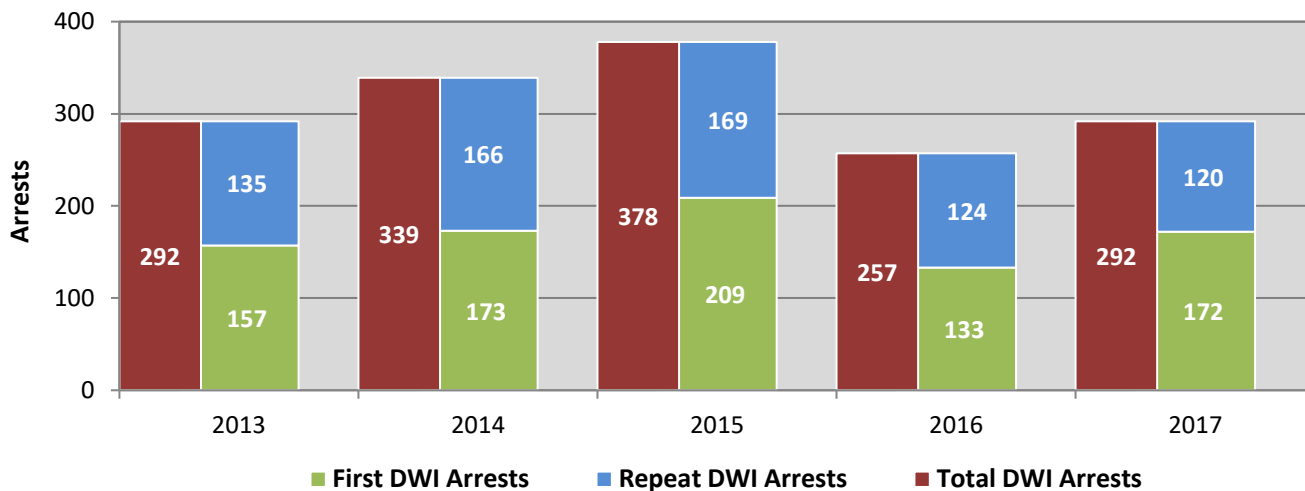
Age Groups	Pedestrians and Pedalcyclists ¹ in Crashes					5-Year Total People
	2013	2014	2015	2016	2017	
0-4	0	0	0	1	1	2
5-9	1	0	0	1	0	2
10-14	1	3	1	3	1	9
15-19	0	2	1	2	3	8
20-24	0	1	1	0	2	4
25-29	1	2	1	3	5	12
30-34	0	2	1	2	2	7
35-39	2	0	3	0	1	6
40-44	0	0	1	0	2	3
45-49	0	1	0	1	2	4
50-54	2	1	1	1	1	6
55-59	0	3	2	3	1	9
60-64	1	0	0	0	0	1
65-69	1	0	0	1	1	3
70 +	1	0	0	0	0	1
Missing Data	0	0	2	0	0	2
Total People	10	15	14	18	22	79

Table 19: Pedestrians and Pedalcyclists in Crashes by Alcohol Involvement and Severity of Injuries in Valencia County, 2017

Alcohol Involvement	Pedestrians and Pedalcyclists ¹ in Crashes					Total People
	Fatalities (Class K)	Suspected Serious Injuries (Class A)	Suspected Minor Injuries (Class B)	Possible Injuries (Class C)	No Apparent Injury (Class O)	
Total Pedalcyclists	0	1	1	0	1	3
Involved	0	0	0	0	0	0
Not Involved	0	1	1	0	1	3
Total Pedestrians	1	3	2	13	0	19
Involved	0	0	1	1	0	2
Not Involved	1	3	1	12	0	17
Total People	1	4	3	13	1	22

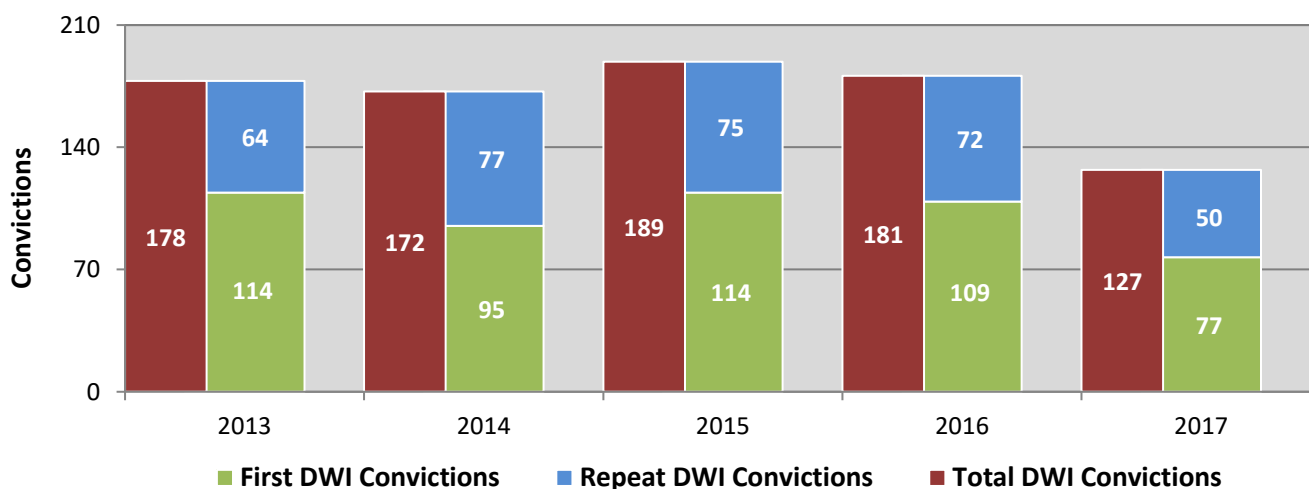
¹ Pedestrians and pedalcyclists are counted as non-motorized vehicles, when involved in a crash with a motor vehicle.

**Figure 11: DWI Arrests in Valencia County,
Showing First and Repeat DWI Arrests, 2013-2017**



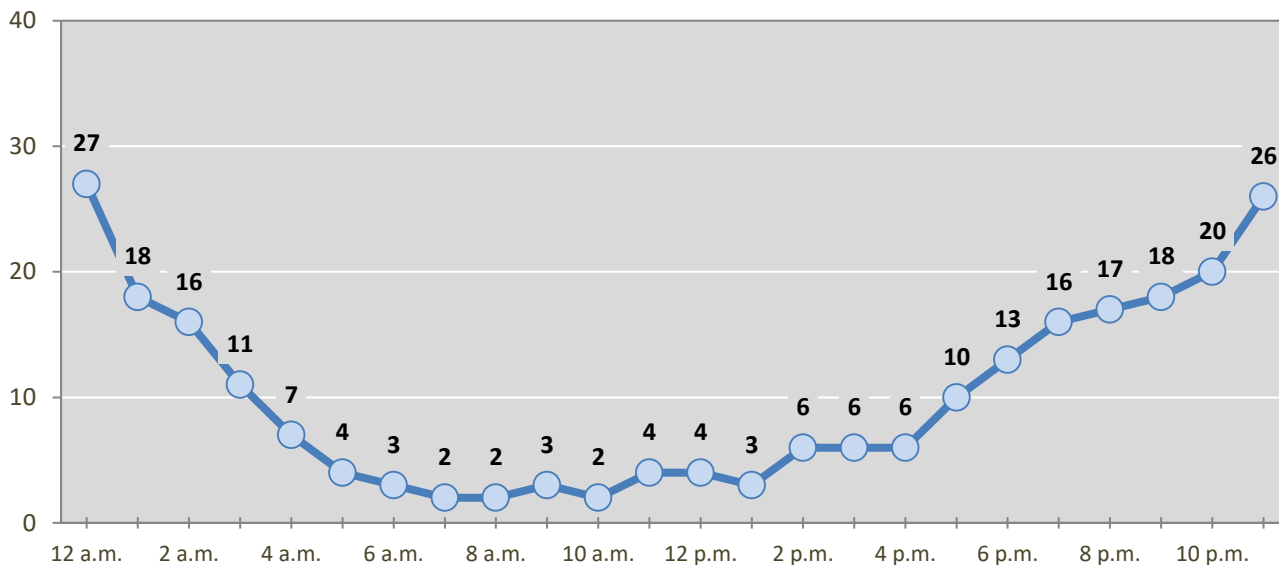
*Values are based upon the year of the arrest.

**Figure 12: DWI Convictions in Valencia County,
Showing First and Repeat DWI Convictions, 2013-2017**



*Values are based upon the year of the conviction.

Figure 13: DWI Arrests by Hour in Valencia County, 2017



* In 2017, Valencia County had 48 arrests for which hour data were missing.

Table 20: DWI Arrests by Day of Week in Valencia County, 2013-2017

Day of Week	Year					5-Year Average
	2013	2014	2015	2016	2017	
Sunday	47	54	81	49	43	55
Monday	20	36	22	30	34	28
Tuesday	29	36	27	15	24	26
Wednesday	35	31	39	19	20	29
Thursday	31	30	57	39	42	40
Friday	62	63	59	44	45	55
Saturday	68	89	93	61	84	79
Total Arrests	292	339	378	257	292	312

Table 21: Driver First DWI Arrests by Age Group in Valencia County, 2013-2017

Age Groups	Driver First DWI Arrests ¹				
	2013	2014	2015	2016	2017
15-19	8	23	21	15	12
20-24	38	36	44	33	47
25-29	32	31	38	27	28
30-34	24	25	20	20	24
35-39	16	14	20	9	13
40-44	16	11	19	5	8
45-49	7	12	11	4	11
50-54	5	4	16	7	13
55-59	4	6	9	5	6
60-64	3	6	6	3	4
65-69	4	4	2	2	4
70 +	0	1	3	2	2
Missing Data	0	0	0	1	0
Total Drivers	157	173	209	133	172

¹ Values are based upon the year of the arrest.

Table 22: Driver Repeat DWI Arrests by Age Group in Valencia County, 2013-2017

Age Groups	Driver Repeat DWI Arrests ¹				
	2013	2014	2015	2016	2017
15-19	1	0	1	0	1
20-24	13	11	13	8	7
25-29	19	20	21	9	18
30-34	12	35	21	16	19
35-39	17	17	17	22	15
40-44	16	18	31	23	18
45-49	17	17	17	15	17
50-54	22	15	25	16	14
55-59	8	17	15	7	7
60-64	7	9	3	3	2
65-69	2	4	4	5	2
70 +	0	2	1	0	0
Missing Data	1	1	0	0	0
Total Drivers	135	166	169	124	120

¹ Values are based upon the year of the arrest.

Table 23: Driver First DWI Convictions by Age Group in Valencia County, 2013-2017

Age Groups	Driver First DWI Convictions ¹				
	2013	2014	2015	2016	2017
15-19	9	4	14	2	3
20-24	34	22	21	28	19
25-29	16	16	25	24	13
30-34	16	14	9	13	14
35-39	5	13	8	10	8
40-44	6	5	8	12	4
45-49	7	5	7	5	5
50-54	11	5	9	6	3
55-59	1	6	7	4	2
60-64	4	2	5	3	4
65-69	3	3	1	1	2
70 +	2	0	0	1	0
Missing Data	0	0	0	0	0
Total Drivers	114	95	114	109	77

¹ Values are based upon the year of the conviction.

Table 24: Driver Repeat DWI Convictions by Age Group in Valencia County, 2013-2017

Age Groups	Driver Repeat DWI Convictions ¹				
	2013	2014	2015	2016	2017
15-19	0	0	0	1	0
20-24	4	2	0	5	3
25-29	7	12	6	9	6
30-34	12	8	11	11	3
35-39	9	10	5	9	9
40-44	8	10	17	7	10
45-49	12	9	6	5	8
50-54	7	11	14	12	4
55-59	3	6	10	8	2
60-64	2	5	4	3	2
65-69	0	3	1	2	3
70 +	0	1	1	0	0
Missing Data	0	0	0	0	0
Total Drivers	64	77	75	72	50

¹ Values are based upon the year of the conviction.

Table 25: Court Disposition of DWI Arrests for Valencia County and the State, 2017

Court Disposition of DWI Arrest ¹	Valencia County	Statewide	Percent of Statewide
Total DWI Arrests	292	10,501	2.8%
DWI Arrests Resulting in Convictions	119	5,533	2.2%
DWI Arrests Resulting in Dismissals ²	40	1,426	2.8%
DWI Arrests Awaiting Disposition	133	3,542	3.8%

¹ These are the number of DWI arrests in 2017 and whether the case resulted in a conviction or dismissal, or is still awaiting court disposition, as reported in the NM MVD Citation Tracking System (CTS) as of February 2019.

² For this table, a very small number of "not guilty" rulings may be included in the category Dismissals.

Table 26: Average Number of Days from Date of DWI Arrest to Date of Court Disposition in Valencia County and the State, 2017

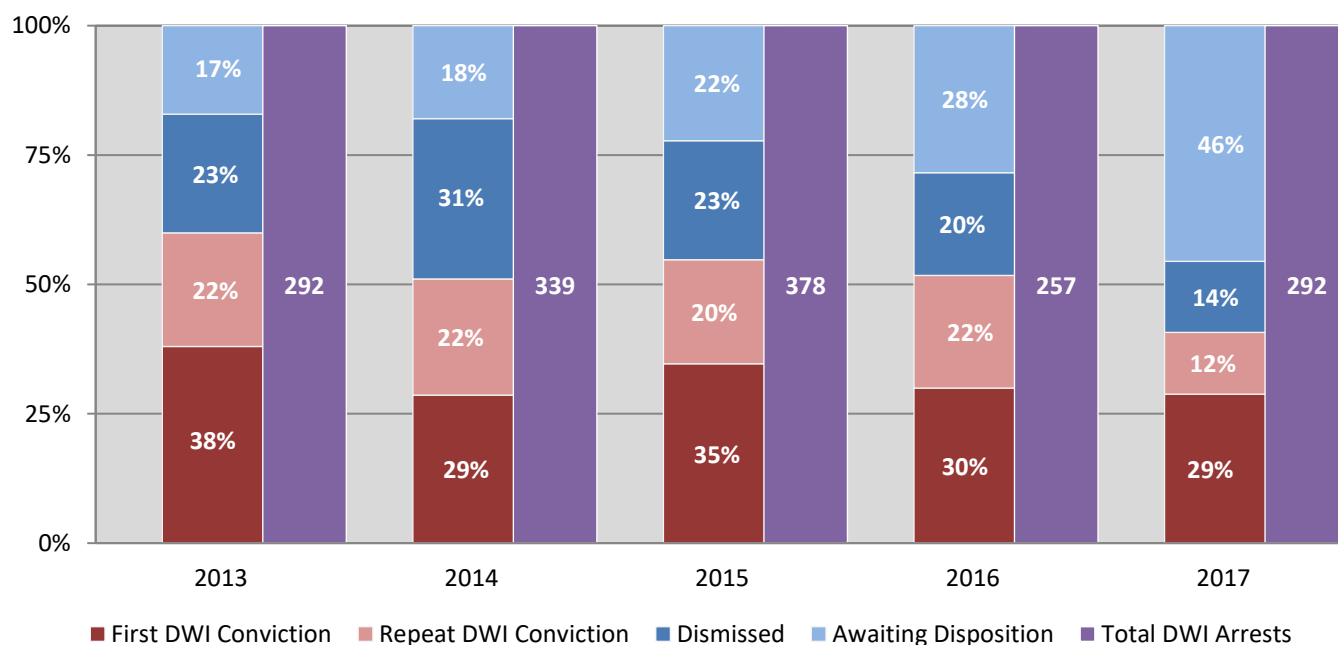
Court Disposition	Average Number of Days		Deviation from Statewide Average
	Valencia County	Statewide	
DWI Conviction	178	166	12
DWI Dismissal	189	175	14

Table 27: Court Disposition of DWI Arrests in Valencia County, 2013-2017

Year of DWI Arrest ¹	Court Disposition				Total DWI Arrests
	First DWI Conviction	Repeat DWI Conviction	Dismissed	Awaiting Disposition	
2013	111	64	67	50	292
2014	97	76	105	61	339
2015	131	76	87	84	378
2016	77	56	51	73	257
2017	84	35	40	133	292

¹ Values are based upon the year of the arrest.

Figure 14: Court Dispositions by Percentage of DWI Arrests in Valencia County, 2013-2017



*Table 27 contains the values used to calculate percentages shown in Figure 14.