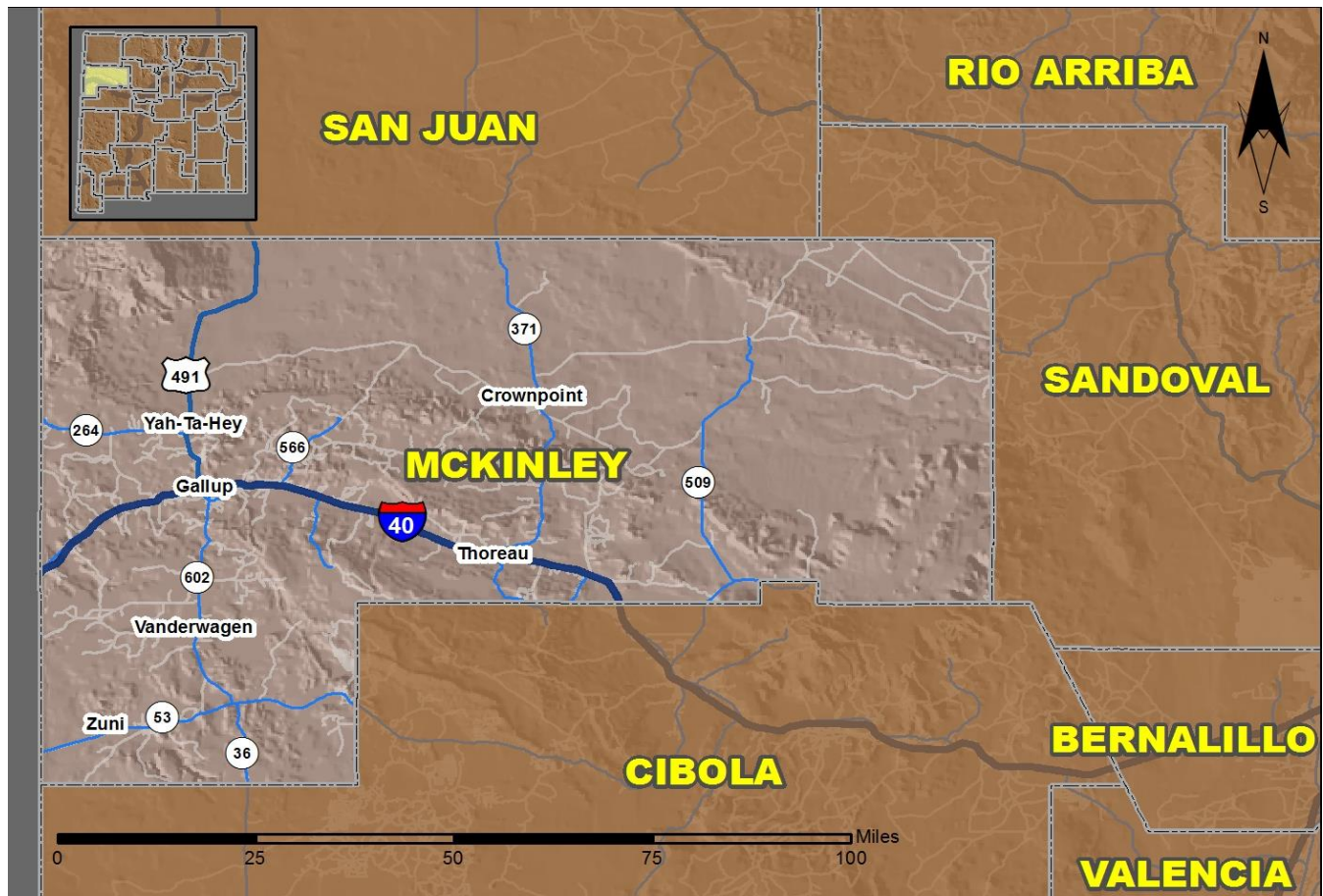


# 2018 Community Report

## Gallup



Produced for the New Mexico Department of Transportation,  
Traffic Safety Division, Traffic Records Bureau,  
Under Contract 6093 by the University of New Mexico,  
Geospatial and Population Studies, Traffic Research Unit

Distributed in compliance with New Mexico Statute 66-7-214  
as a reference source regarding New Mexico traffic crashes

For the purposes of this report, data are compiled by the University of New Mexico, Geospatial and Population Studies, Traffic Research Unit (TRU), on behalf of the New Mexico Department of Transportation (NMDOT). Data in this report may differ from that in other data sources, such as the Federal Fatality Analysis Reporting System (FARS), due to the timing of publications and rules for how data are compiled and maintained in Federal vs. State databases. If you have questions regarding this report, please contact the Traffic Safety Division at 505-827-0427.

<https://gps.unm.edu/tru/crash-reports/community-reports>

## Definitions

---

**Aggravated DWI** – A driver arrested for 1) driving with a BAC of 0.16 or higher, 2) driving under the influence of alcohol or drugs and causing bodily injury to a human being as a result, or 3) driving under the influence of alcohol or drugs and refusing to submit to a BAC test at the time of arrest for DWI.

**Alcohol-involved Crash** – A crash for which the Uniform Crash Report indicated that 1) a DWI citation was issued, 2) alcohol was a contributing factor, or 3) a person in control of a vehicle (including a pedestrian or pedalcyclist) was suspected of being under the influence of alcohol.

**Alcohol-involved Driver** – A person in control of a vehicle who was cited for DWI or indicated on the Uniform Crash Report as being either suspected or determined by testing to be under the influence of alcohol. There can be multiple alcohol-involved drivers in a single alcohol-involved crash.

**Crash** – A reported incident on a public roadway involving one or more motor vehicles that resulted in death, personal injury, or at least \$500 in property damage. Crashes on private property (such as a parking lot) are not included.

**DWI Arrest (Citation)** – In this report, a DWI arrest (a.k.a. a DWI citation) is a driver arrested for either DWI or aggravated DWI. New Mexico’s legal limit for presumption of driving while intoxicated (DWI) is 0.08 for non-commercial drivers older than 21 years of age, 0.04 for commercial vehicle drivers, and 0.02 for drivers younger than 21 years of age.

**DWI Conviction** – A driver convicted of driving under the intoxicating influence of alcohol, narcotics, or pathogenic drugs, including aggravated DWI.

**Fatal Crash** – A crash in which at least one person was killed. More than one person can be killed in a single fatal crash.

**Fatalities** – The number of people killed in a crash. The terms “killed” and “deaths” are synonymous with “fatalities.” A fatality is crash-related if it occurs at the time of the crash or if the person(s) involved in the crash dies within 30 days.

**Injury Crash** – A reported crash in which at least one person was injured. Injury crashes involve at least one suspected serious injury (Class A), suspected minor injury (Class B), or possible injury (Class C). Fatal crashes are not included.

**Missing Data** – An indication that the applicable field on the UCR form was left blank or contained an invalid code. Starting with crashes that occurred in 2012, improvements in the identification of missing data in the NMDOT crash database led to an increase in the reported amount of missing data.

**Pedalcyclist** – A person riding a mechanism of transport that is powered solely by pedals (a.k.a. bicyclist).

**Pedestrian** – A person on foot, walking, running, jogging, hiking, sitting or lying down who is involved in a motor vehicle traffic crash.

## Sources

---

**Crash Data** – New Mexico Department of Transportation, Traffic Safety Division, Traffic Records Bureau, Traffic Crash Database, as of the report date below. Crash data are compiled using NMDOT Uniform Crash Reports (UCR), submitted by law enforcement agencies in the state, for any incident on a public roadway involving one or more motor vehicles that resulted in death, injury, or at least \$500 in property damage. These reports are processed by the NMDOT Traffic Records Bureau and analyzed by the University of New Mexico, Geospatial and Population Studies, Traffic Research Unit (TRU).

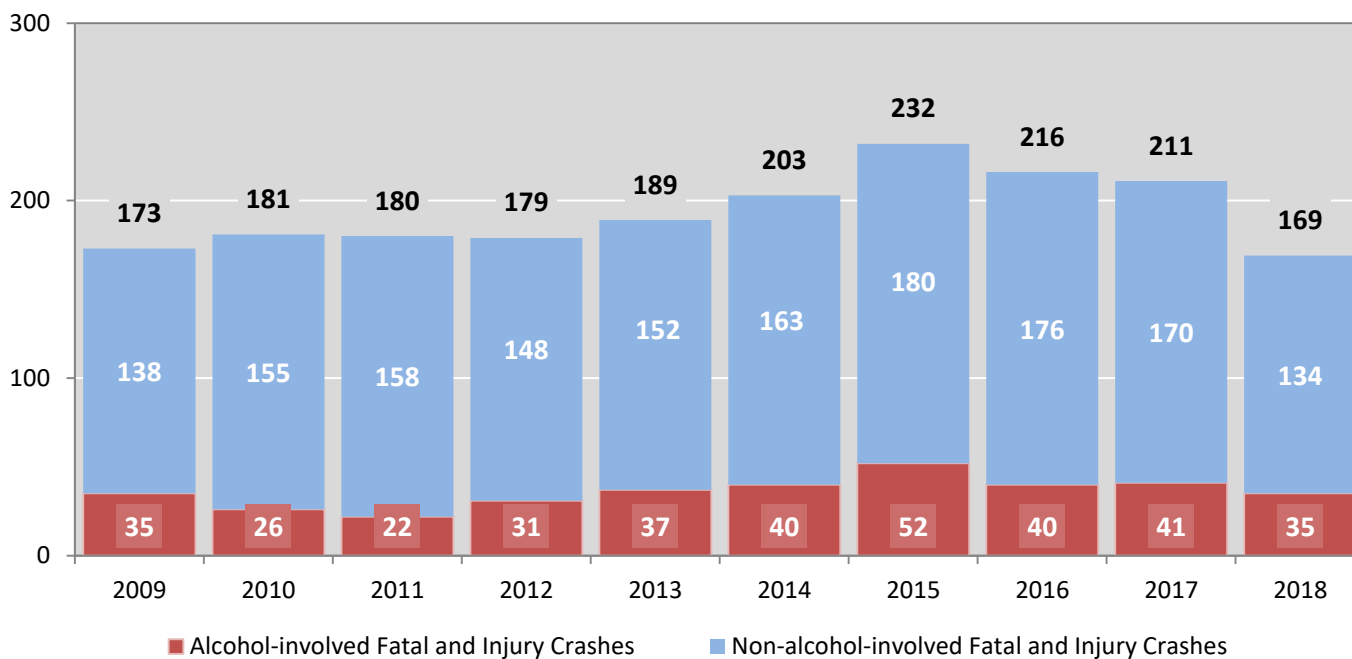
**DWI Citation Tracking System (CTS)** – New Mexico Taxation and Revenue Department (NM TRD), Motor Vehicle Division (MVD), DWI Citation Tracking System (CTS), as of July 2019. Repeat offenders are identified by the combination of account key, arrest date, and citation number. County data are based upon the county where the arrest took place. City data are based upon the city where the offender resides.

**Urban Areas** – Areas defined by the New Mexico Department of Transportation, Asset Management and Planning, 2010 U.S. Census Urbanized Area Boundaries, NMDOT-Adjusted, and U.S. Census Urban Clusters, August 21, 2013. Urban areas for crash years 2013-2017 include a 1/2 mile buffer extending out from those urban boundaries. In crashes before 2013, “urban” was defined as a town or city with a population of at least 2,500 people.

**Table 1: Total Crashes and Alcohol-involved Crashes by Crash Severity in Gallup, 2009-2018**

Year	Total Crashes				Alcohol-involved Crashes			
	Fatal	Injury	Property Damage Only	Total	Fatal	Injury	Property Damage Only	Total
2009	6	167	587	<b>760</b>	5	30	51	<b>86</b>
2010	2	179	579	<b>760</b>	1	25	29	<b>55</b>
2011	3	177	557	<b>737</b>	0	22	37	<b>59</b>
2012	4	175	559	<b>738</b>	2	29	37	<b>68</b>
2013	7	182	606	<b>795</b>	4	33	51	<b>88</b>
2014	14	189	588	<b>791</b>	12	28	47	<b>87</b>
2015	3	229	662	<b>894</b>	1	51	52	<b>104</b>
2016	5	211	611	<b>827</b>	4	36	48	<b>88</b>
2017	11	200	611	<b>822</b>	7	34	50	<b>91</b>
2018	6	163	548	<b>717</b>	3	32	45	<b>80</b>

**Figure 1: Alcohol-involved Fatal and Injury Crashes Compared with Non-alcohol-involved Fatal and Injury Crashes in Gallup, 2009-2018**



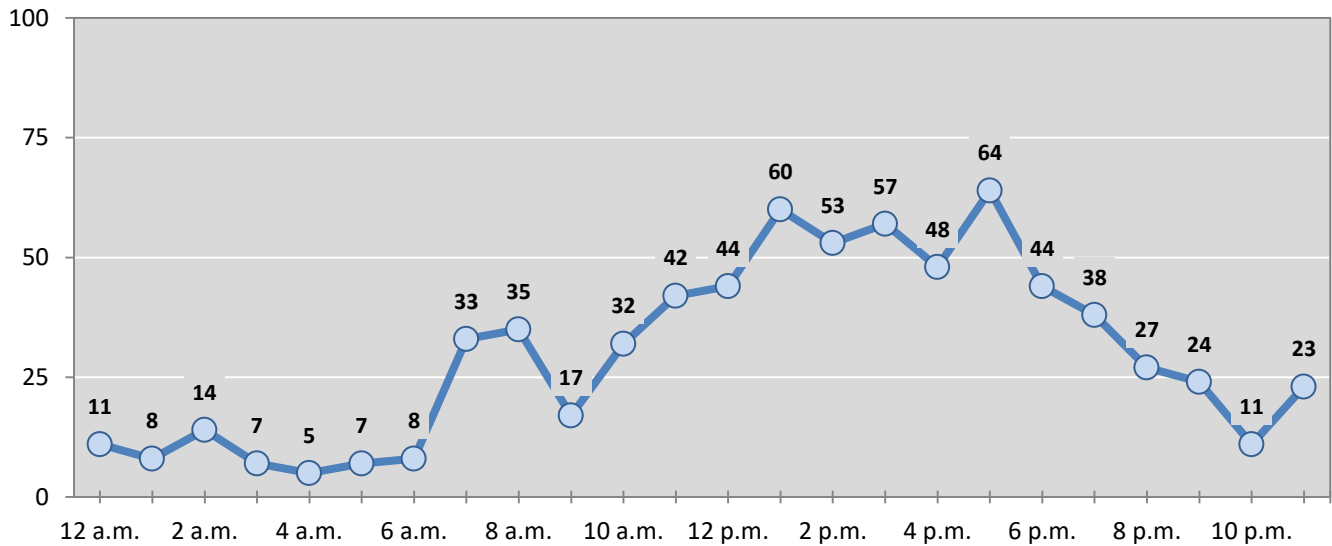
**Table 2: Crashes by Month in Gallup, 2014-2018**

Month	Crashes					5-Year Average
	2014	2015	2016	2017	2018	
January	69	71	78	63	58	<b>68</b>
February	73	79	99	64	76	<b>78</b>
March	60	56	65	66	49	<b>59</b>
April	59	62	54	73	62	<b>62</b>
May	65	66	61	73	59	<b>65</b>
June	67	77	69	61	59	<b>67</b>
July	55	73	47	78	45	<b>60</b>
August	71	76	68	75	46	<b>67</b>
September	61	57	79	65	53	<b>63</b>
October	79	79	66	68	74	<b>73</b>
November	56	89	70	64	64	<b>69</b>
December	76	109	71	72	72	<b>80</b>
<b>Total Crashes</b>	<b>791</b>	<b>894</b>	<b>827</b>	<b>822</b>	<b>717</b>	<b>810</b>

**Table 3: Alcohol-involved Crashes by Month in Gallup, 2014-2018**

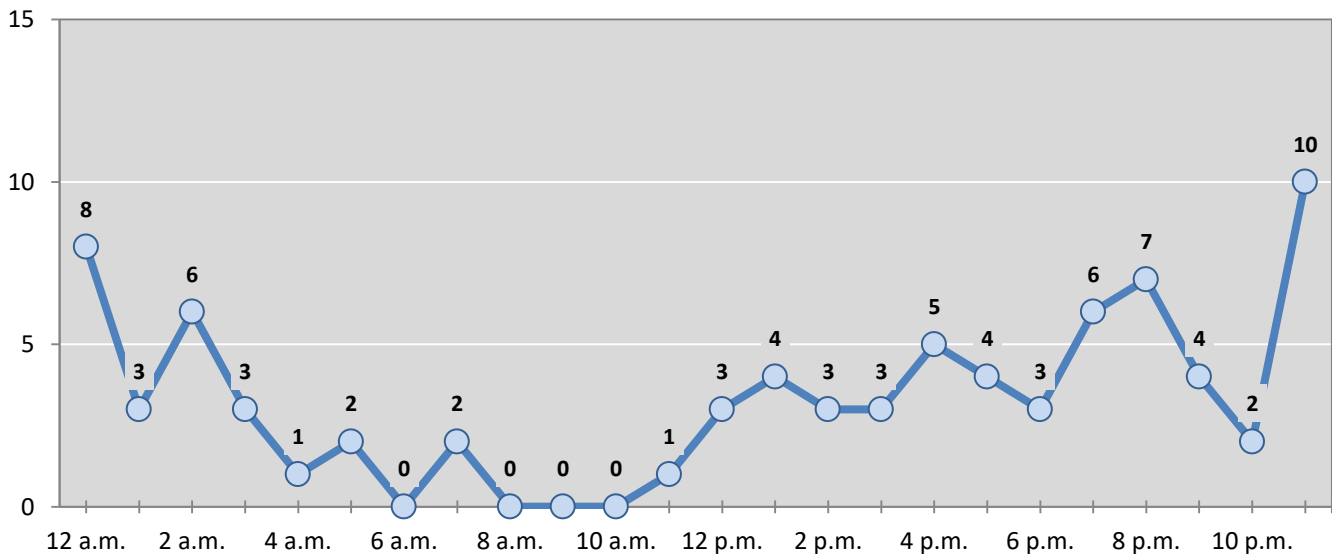
Month	Alcohol-involved Crashes					5-Year Average
	2014	2015	2016	2017	2018	
January	8	9	8	15	6	<b>9</b>
February	7	6	13	11	9	<b>9</b>
March	8	8	6	8	4	<b>7</b>
April	9	6	4	5	3	<b>5</b>
May	6	7	10	5	7	<b>7</b>
June	5	8	5	8	5	<b>6</b>
July	5	14	4	4	8	<b>7</b>
August	8	4	7	7	2	<b>6</b>
September	7	11	6	7	8	<b>8</b>
October	10	12	10	12	11	<b>11</b>
November	7	3	8	6	6	<b>6</b>
December	7	16	7	3	11	<b>9</b>
<b>Total Crashes</b>	<b>87</b>	<b>104</b>	<b>88</b>	<b>91</b>	<b>80</b>	<b>90</b>

**Figure 2: Crashes by Hour in Gallup, 2018**



\* In 2018, Gallup had 5 crashes for which hour data were missing.

**Figure 3: Alcohol-involved Crashes by Hour in Gallup, 2018**



\* In 2018, Gallup had 0 alcohol-involved crashes for which hour data were missing.

**Table 4: Alcohol-involved Crashes by Day of Week in Gallup, 2014-2018**

Day of Week	Alcohol-involved Crashes					5-Year Average
	2014	2015	2016	2017	2018	
Sunday	10	8	9	11	11	10
Monday	7	11	13	7	7	9
Tuesday	16	20	8	10	9	13
Wednesday	10	13	6	11	13	11
Thursday	11	14	14	16	13	14
Friday	13	19	18	13	11	15
Saturday	20	19	20	23	16	20
<b>Total Crashes</b>	<b>87</b>	<b>104</b>	<b>88</b>	<b>91</b>	<b>80</b>	<b>90</b>

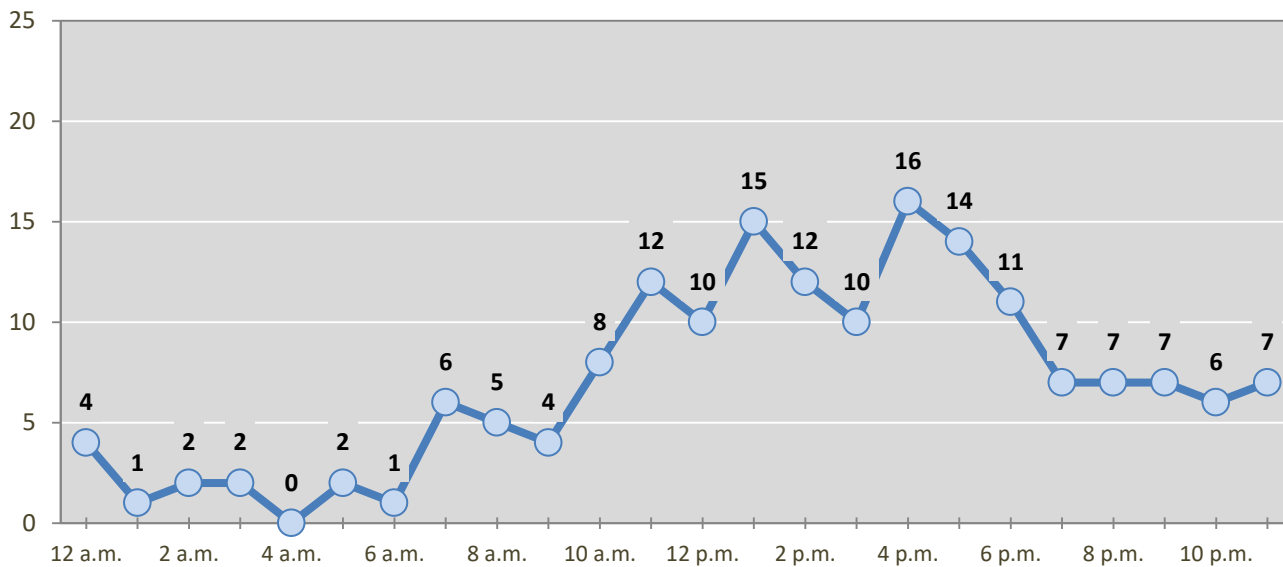
**Table 5: Fatal and Injury Crashes by Day of Week in Gallup, 2014-2018**

Day of Week	Fatal and Injury Crashes					5-Year Average
	2014	2015	2016	2017	2018	
Sunday	22	16	18	25	13	19
Monday	28	36	36	25	29	31
Tuesday	31	45	30	25	28	32
Wednesday	31	31	30	32	13	27
Thursday	21	29	31	28	24	27
Friday	32	47	33	31	32	35
Saturday	38	28	38	45	30	36
<b>Total Crashes</b>	<b>203</b>	<b>232</b>	<b>216</b>	<b>211</b>	<b>169</b>	<b>206</b>

**Table 6: Pedestrian and Pedalcyclist Crashes by Day of Week in Gallup, 2014-2018**

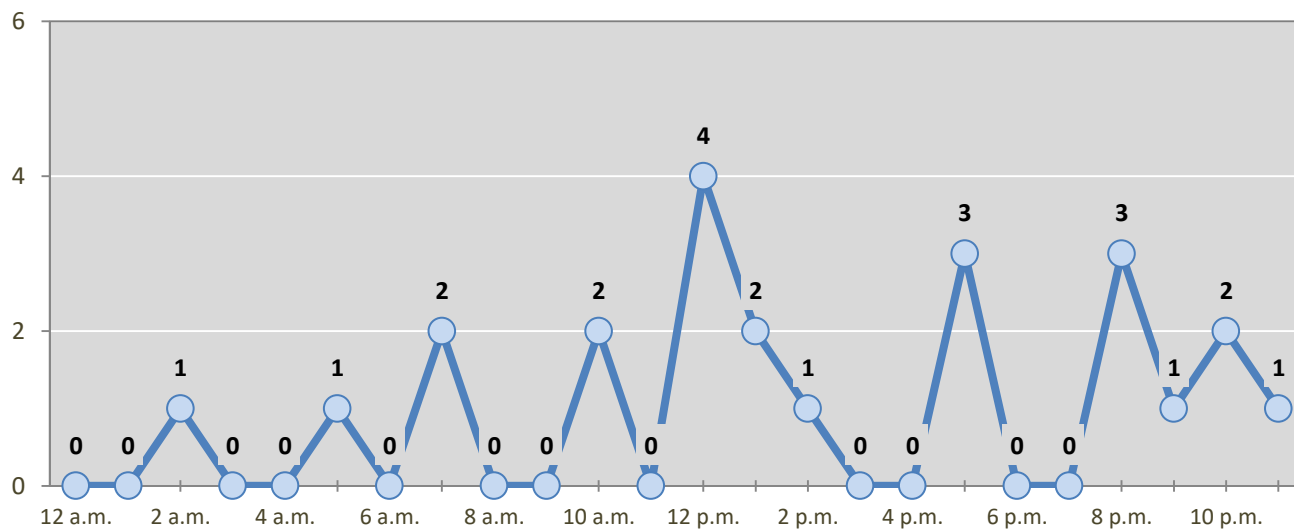
Day of Week	Pedestrian and Pedalcyclist Crashes					5-Year Average
	2014	2015	2016	2017	2018	
Sunday	5	3	0	1	1	2
Monday	7	6	3	3	3	4
Tuesday	7	6	1	5	4	5
Wednesday	2	2	5	5	1	3
Thursday	3	4	4	3	4	4
Friday	3	5	2	3	5	4
Saturday	8	4	4	11	5	6
<b>Total Crashes</b>	<b>35</b>	<b>30</b>	<b>19</b>	<b>31</b>	<b>23</b>	<b>28</b>

**Figure 4: Fatal and Injury Crashes by Hour in Gallup, 2018**



\* In 2018, Gallup had 0 crashes for which hour data were missing.

**Figure 5: Pedestrian and Pedalcyclist Crashes by Hour in Gallup, 2018**



\* In 2018, Gallup had 0 crashes for which hour data were missing.

**Table 7: Severity of Injuries to People in Crashes by Rural and Urban Location in Gallup, 2018**

Urban and Rural Locations by Alcohol-involvement	People in Crashes by Severity of Injuries					Total People
	Fatalities (Class K)	Suspected Serious Injuries (Class A)	Suspected Minor Injuries (Class B)	Possible Injuries (Class C)	No Apparent Injuries (Class O)	
<b>People in Alcohol-involved Crashes</b>	<b>3</b>	<b>13</b>	<b>18</b>	<b>25</b>	<b>126</b>	<b>185</b>
Urban	2	11	16	22	111	162
Rural Non-Interstate	0	2	1	1	13	17
Rural Interstate	1	0	1	2	2	6
<b>People in Crashes</b>	<b>6</b>	<b>26</b>	<b>56</b>	<b>173</b>	<b>1,663</b>	<b>1,924</b>
Urban	4	23	50	151	1,448	1,676
Rural Non-Interstate	0	2	3	17	179	201
Rural Interstate	2	1	3	5	36	47
<b>Percent in Alcohol-involved Crashes</b>	<b>50%</b>	<b>50%</b>	<b>32%</b>	<b>14%</b>	<b>8%</b>	<b>10%</b>

**Table 8: Total Crashes by Roadway System and Crash Severity in Gallup, 2014-2018**

Crash Severity by System	Crashes by Year					5-Year Average
	2014	2015	2016	2017	2018	
<b>Total Rural Interstate</b>	<b>21</b>	<b>0</b>	<b>0</b>	<b>4</b>	<b>27</b>	<b>11</b>
Fatal Crash	2	0	0	0	2	1
Injury Crash	5	0	0	2	7	3
Property Damage Only Crash	14	0	0	2	18	7
<b>Total Rural Non-Interstate</b>	<b>16</b>	<b>5</b>	<b>8</b>	<b>4</b>	<b>72</b>	<b>21</b>
Fatal Crash	0	0	0	0	0	0
Injury Crash	6	0	2	2	19	6
Property Damage Only Crash	10	5	6	2	53	15
<b>Total Urban</b>	<b>754</b>	<b>889</b>	<b>819</b>	<b>814</b>	<b>618</b>	<b>779</b>
Fatal Crash	12	3	5	11	4	7
Injury Crash	178	229	209	196	137	190
Property Damage Only Crash	564	657	605	607	477	582



**Table 9: Total Crashes by Crash Classification in Gallup, 2014-2018**

Crash Classification	Total Crashes by Year					5-Year Average
	2014	2015	2016	2017	2018	
Animal	6	8	12	8	8	8
Fixed Object	55	90	73	68	58	69
Other (Non-Collision)	14	5	16	12	18	13
Other (Object)	20	11	13	10	11	13
Other Vehicle	551	654	620	617	521	593
Overturn/Rollover	26	13	12	17	14	16
Parked Vehicle	62	52	51	52	45	52
Pedalcyclist	7	4	2	4	7	5
Pedestrian	29	25	17	27	16	23
Railroad Train	1	1	0	1	1	1
Rollover	0	13	1	2	5	4
Vehicle on Other Road	6	4	9	4	9	6
Missing Data	14	14	1	0	4	7
<b>Total Crashes</b>	<b>791</b>	<b>894</b>	<b>827</b>	<b>822</b>	<b>717</b>	<b>810</b>

**Table 10: Vehicles in Crashes by Vehicle Type in Gallup, 2014-2018**

Vehicle Type <sup>1</sup>	Vehicles in Crashes by Vehicle Type					5-Year Average
	2014	2015	2016	2017	2018	
Bus	7	4	0	3	2	3
Motorcycle	11	11	7	16	8	11
Passenger	545	682	679	652	572	626
Pedalcyclist	7	4	2	4	7	5
Pedestrian	29	26	18	28	17	24
Pickup	391	418	369	394	341	383
Semi	57	56	44	45	55	51
Van/SUV/4WD	265	316	330	327	251	298
Other Vehicle	7	18	6	2	9	8
Missing Data	188	164	111	108	99	134
<b>Total Vehicles</b>	<b>1,507</b>	<b>1,699</b>	<b>1,566</b>	<b>1,579</b>	<b>1,361</b>	<b>1,542</b>

<sup>1</sup> Pedestrians and pedalcyclists are counted as non-motorized vehicles, when involved in a crash with a motor vehicle. See Page 17 for data on drivers of non-motorized vehicles in crashes (i.e. pedestrians and pedalcyclists).

**Table 11: Motor Vehicle Drivers in Crashes by Vehicle Type and Age Group in Gallup, 2018**

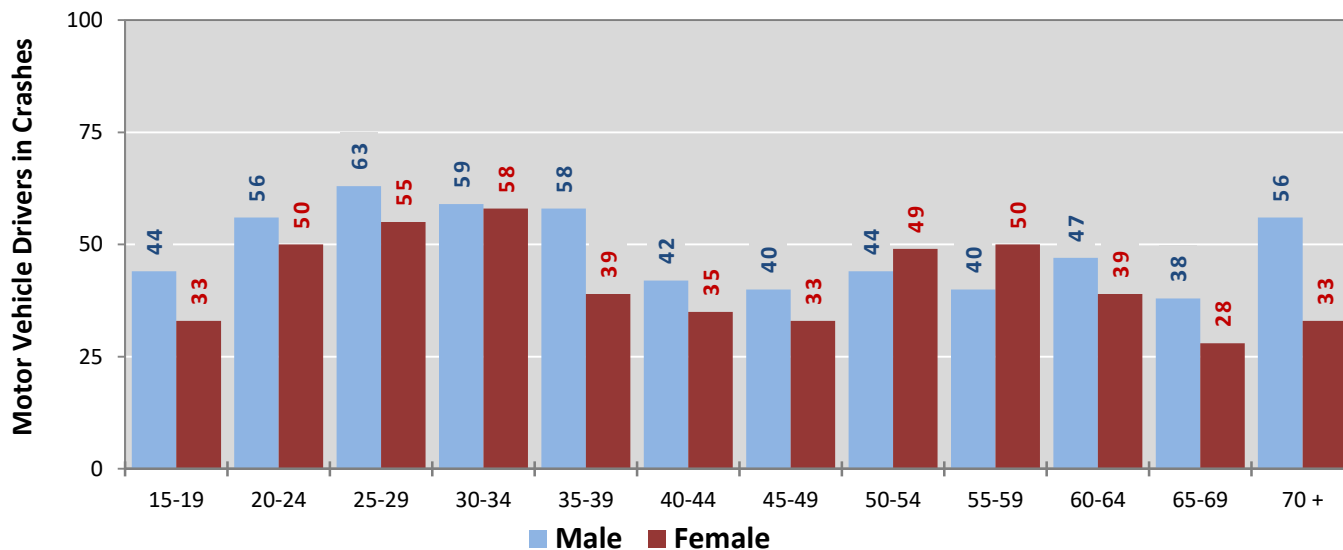
Age Groups	Motor Vehicle <sup>1</sup> Drivers by Vehicle Type and Age Group								Total Drivers
	Bus	Motor-cycle	Passenger	Pickup	Semi	Van 4WD SUV	Other Vehicle	Missing Data	
15-19	0	0	36	22	1	17	1	1	78
20-24	0	0	65	20	1	18	2	0	106
25-29	0	0	64	28	6	20	0	1	119
30-34	0	1	58	31	2	23	0	3	118
35-39	1	1	39	26	3	28	0	1	99
40-44	0	0	26	14	8	27	2	1	78
45-49	0	1	32	20	8	10	0	2	73
50-54	0	1	41	24	6	20	0	1	93
55-59	0	1	42	31	6	10	0	0	90
60-64	1	0	31	29	7	19	0	2	89
65-69	0	0	31	18	3	14	0	1	67
70 +	0	1	34	36	2	13	2	1	89
Missing Data	0	2	73	42	2	32	2	85	238
<b>Total Drivers</b>	<b>2</b>	<b>8</b>	<b>572</b>	<b>341</b>	<b>55</b>	<b>251</b>	<b>9</b>	<b>99</b>	<b>1,337</b>

**Table 12: Alcohol-involved Motor Vehicle Drivers in Crashes by Vehicle Type and Age Group in Gallup, 2018**

Age Groups	Alcohol-involved Motor Vehicle <sup>1</sup> Drivers by Vehicle Type and Age Group								Total Drivers
	Bus	Motor-cycle	Passenger	Pickup	Semi	Van 4WD SUV	Other Vehicle	Missing Data	
15-19	0	0	0	1	0	0	0	0	1
20-24	0	0	8	3	0	1	0	0	12
25-29	0	0	11	5	1	2	0	0	19
30-34	0	0	5	5	0	4	0	0	14
35-39	0	0	1	4	0	0	0	1	6
40-44	0	0	3	0	0	0	0	0	3
45-49	0	0	2	2	0	0	0	0	4
50-54	0	0	0	0	0	2	0	0	2
55-59	0	0	2	2	0	0	0	0	4
60-64	0	0	0	0	0	1	0	0	1
65-69	0	0	3	0	0	0	0	0	3
70 +	0	0	1	0	0	0	0	0	1
Missing Data	0	0	2	0	0	0	0	1	3
<b>Total Drivers</b>	<b>0</b>	<b>0</b>	<b>38</b>	<b>22</b>	<b>1</b>	<b>10</b>	<b>0</b>	<b>2</b>	<b>73</b>

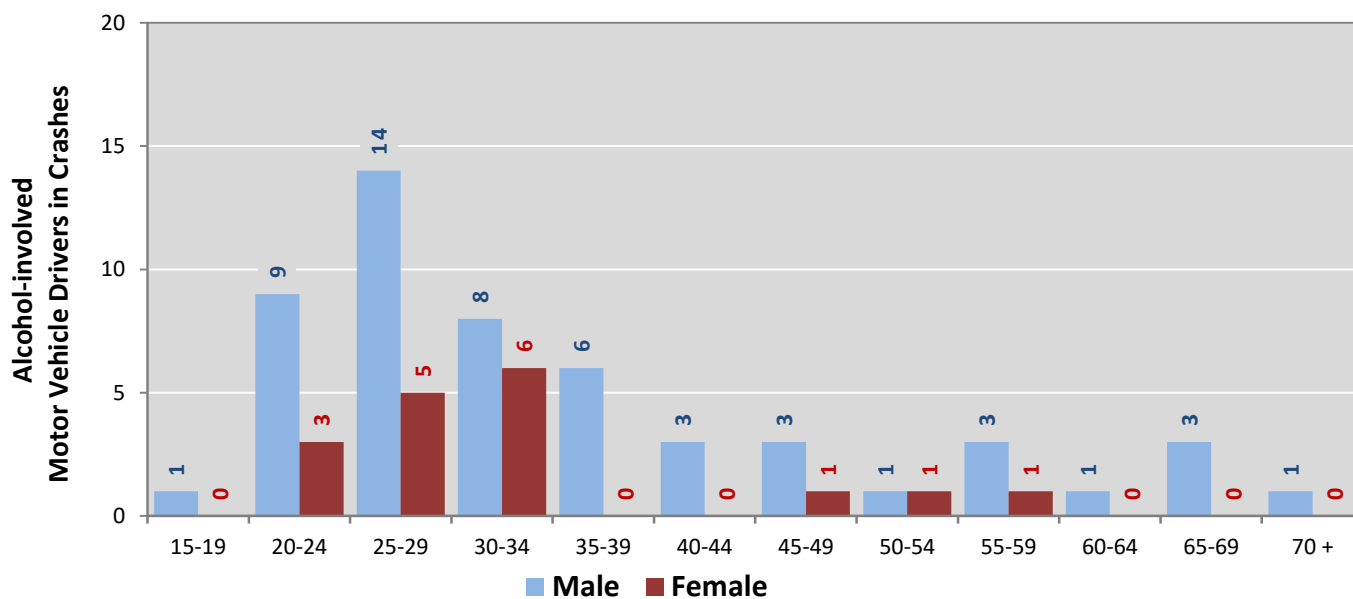
<sup>1</sup> See Page 17 for data on drivers of non-motorized vehicles in crashes (i.e. pedestrians and pedalcyclists).

**Figure 6: Motor Vehicle Drivers in Crashes by Age Group and Sex in Gallup, 2018**



\* In 2018, Gallup had 248 drivers in crashes for which age or sex data were missing.

**Figure 7: Alcohol-involved Motor Vehicle Drivers in Crashes by Age Group and Sex in Gallup, 2018**



\* In 2018, Gallup had 3 drivers in crashes for which age or sex data were missing.

**Table 13: Alcohol-involved Motor Vehicle Drivers Under 21 (Ages 15-20) in Crashes in Gallup, 2014-2018**

Age <sup>1</sup>	Year					5-Year Total
	2014	2015	2016	2017	2018	
15	0	0	0	0	0	0
16	1	0	0	0	0	1
17	0	0	0	1	0	1
18	3	0	2	0	0	5
19	0	1	3	1	1	6
20	2	3	3	2	4	14
<b>Total Drivers</b>	<b>6</b>	<b>4</b>	<b>8</b>	<b>4</b>	<b>5</b>	<b>27</b>

**Table 14: Motor Vehicle Drivers Under 21 (Ages 15-20) in Crashes by Age, Sex and Alcohol-involvement in Gallup, 2018**

Age <sup>1</sup>	Total Drivers				Alcohol-involved Drivers			
	Sex		Total Drivers	Percent of Total	Sex		Total Drivers	Percent of Total
	Male	Female			Male	Female		
15	3	1	4	4%	0	0	0	0%
16	9	5	14	13%	0	0	0	0%
17	7	7	14	13%	0	0	0	0%
18	12	8	20	19%	0	0	0	0%
19	13	12	25	24%	1	0	1	20%
20	12	15	27	26%	2	2	4	80%
<b>Total Drivers</b>	<b>56</b>	<b>48</b>	<b>104</b>	<b>100%</b>	<b>3</b>	<b>2</b>	<b>5</b>	<b>100%</b>

<sup>1</sup> For analysis of drivers under age 21, when the driver age or sex are not identified on the crash report (typically hit-and-run drivers), the driver data are considered unreliable and are excluded from the analysis.

**Table 15: Frequency of Contributing Factors in Crashes  
by Crash Severity in Gallup, 2018**

Contributing Factors	Frequency of Contributing Factor <sup>1</sup> by Crash Severity			
	Frequency in Fatal Crashes	Frequency in Injury Crashes	Frequency in Property Damage Only Crashes	Frequency in All Crashes
<b>Human</b>	<b>15</b>	<b>299</b>	<b>851</b>	<b>1,165</b>
Driver Inattention	1	89	248	338
Failed to Yield Right of Way	0	32	80	112
Other Improper Driving	1	19	64	84
Alcohol Involved	3	33	45	81
Excessive Speed	2	19	56	77
Avoid No Contact - Vehicle	0	13	59	72
Following Too Closely	0	21	51	72
Made Improper Turn	0	15	47	62
Speed Too Fast for Conditions	1	11	37	49
Improper Lane Change	0	3	31	34
Disregarded Traffic Signal	0	12	16	28
Improper Overtaking	0	2	25	27
Drove Left Of Center	0	6	20	26
Improper Backing	0	1	25	26
Passed Stop Sign	0	3	14	17
Drug Involved	3	5	6	14
Avoid No Contact - Other	1	1	9	11
Vehicle Skidded Before Brake	2	2	7	11
Pedestrian Error	1	8	1	10
Cell Phone	0	2	6	8
High Speed Pursuit	0	0	2	2
Texting	0	1	1	2
Failed to Yield to Emergency Vehicle	0	1	0	1
Failed to Yield to Police Vehicle	0	0	1	1
Driverless Moving Vehicle	0	0	0	0
<b>Vehicle</b>	<b>0</b>	<b>3</b>	<b>10</b>	<b>13</b>
Defective Tires	0	2	5	7
Other Mechanical Defect	0	1	3	4
Defective Steering	0	0	2	2
Inadequate Brakes	0	0	0	0
<b>Environment</b>	<b>0</b>	<b>2</b>	<b>3</b>	<b>5</b>
Low Visibility Due to Smoke	0	0	2	2
Road Defect	0	1	1	2
Traffic Control Not Functioning	0	1	0	1
<b>Other</b>	<b>1</b>	<b>133</b>	<b>467</b>	<b>601</b>
None	1	107	379	487
Other - No Driver Error	0	26	88	114

<sup>1</sup> Multiple contributing factors may be reported for any vehicle in a crash.

**Table 16: People in Crashes by Crash Classification and Severity of Injuries in Gallup, 2018**

Crash Classification	People in Crashes by Severity of Injuries					Total People
	Fatalities (Class K)	Suspected Serious Injuries (Class A)	Suspected Minor Injuries (Class B)	Possible Injuries (Class C)	No Apparent Injuries (Class O)	
Animal	0	0	0	0	11	11
Fixed Object	0	1	9	4	64	78
Other (Non-Collision)	0	0	1	0	24	25
Other (Object)	0	0	1	2	14	17
Other Vehicle	0	15	32	156	1,374	1,577
Overturn/Rollover	2	1	2	2	15	22
Parked Vehicle	0	0	1	1	105	107
Pedalcyclist	0	0	2	4	8	14
Pedestrian	3	6	5	3	20	37
Railroad Train	0	1	0	0	2	3
Rollover	1	2	0	1	3	7
Vehicle on Other Road	0	0	3	0	14	17
Missing Data	0	0	0	0	9	9
<b>Total People</b>	<b>6</b>	<b>26</b>	<b>56</b>	<b>173</b>	<b>1,663</b>	<b>1,924</b>

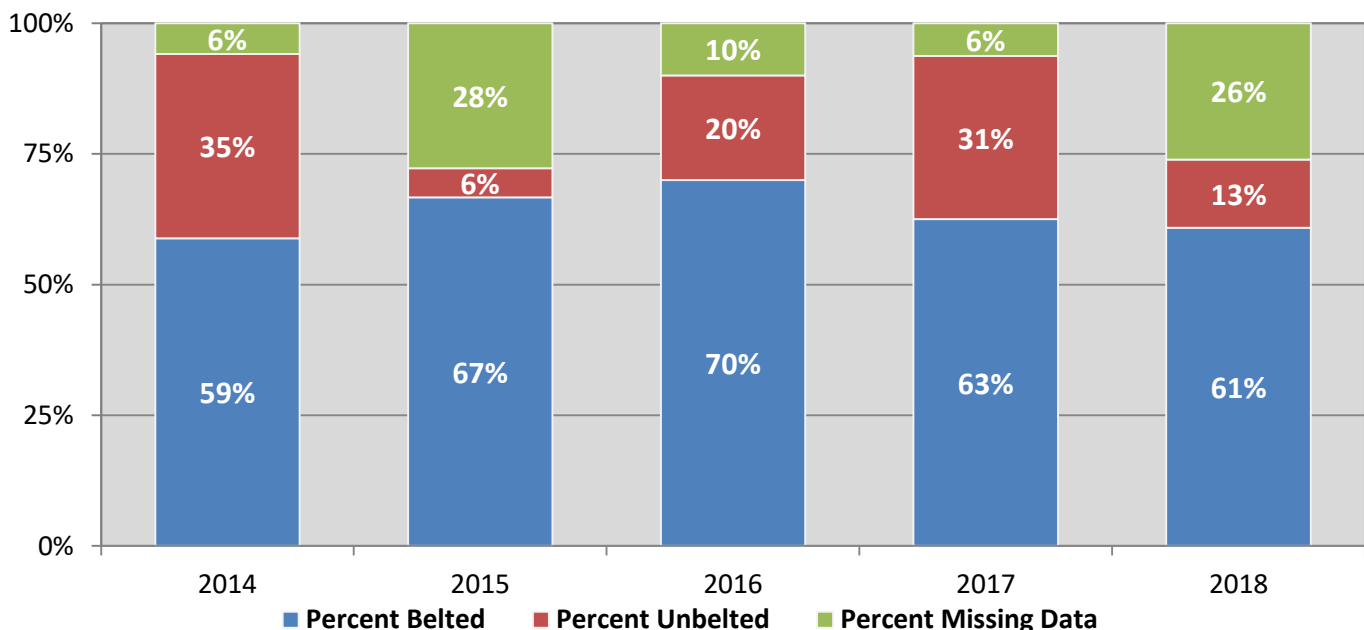
**Table 17: Killed or Injured Unbelted People in Crashes by Sex and Age Group in Gallup, 2018**

Age Groups	Unbelted People Killed or Injured <sup>1,2</sup>				Total People
	Male	Percent of Male	Female	Percent of Female	
0-4	0	0%	0	0%	0
5-9	1	33%	0	0%	1
10-14	0	0%	0	0%	0
15-19	0	0%	0	0%	0
20-24	0	0%	0	0%	0
25-29	0	0%	2	33%	2
30-34	0	0%	1	17%	1
35-39	2	67%	2	33%	4
40-44	0	0%	0	0%	0
45-49	0	0%	0	0%	0
50-54	0	0%	0	0%	0
55-59	0	0%	0	0%	0
60-64	0	0%	1	17%	1
65-69	0	0%	0	0%	0
70 +	0	0%	0	0%	0
Missing Data	0	0%	0	0%	0
<b>Total People</b>	<b>3</b>	<b>100%</b>	<b>6</b>	<b>100%</b>	<b>9</b>

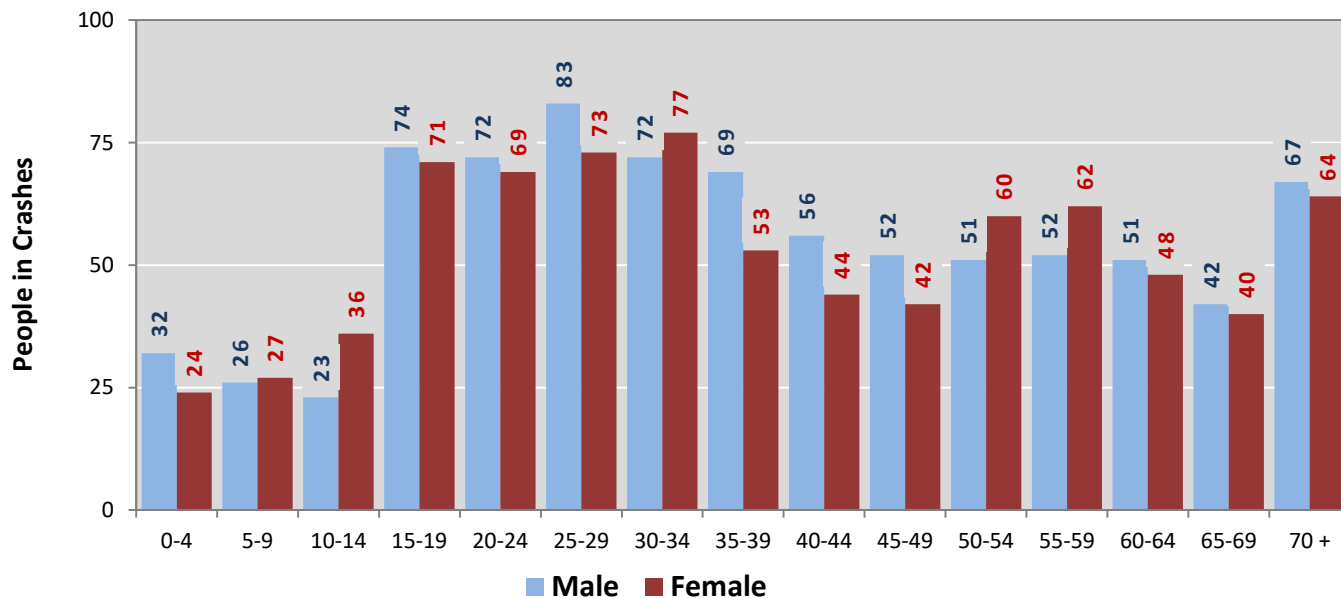
<sup>1</sup> People injured are in one of three categories: suspected serious injury, suspected minor injury, or possible injury.

<sup>2</sup> Excludes people in or on buses, heavy trucks, motorcycles, or ATVs.

**Figure 8: Seatbelt Use by People in Crashes with Fatal or Suspected Serious Injuries in Gallup, 2014-2018**

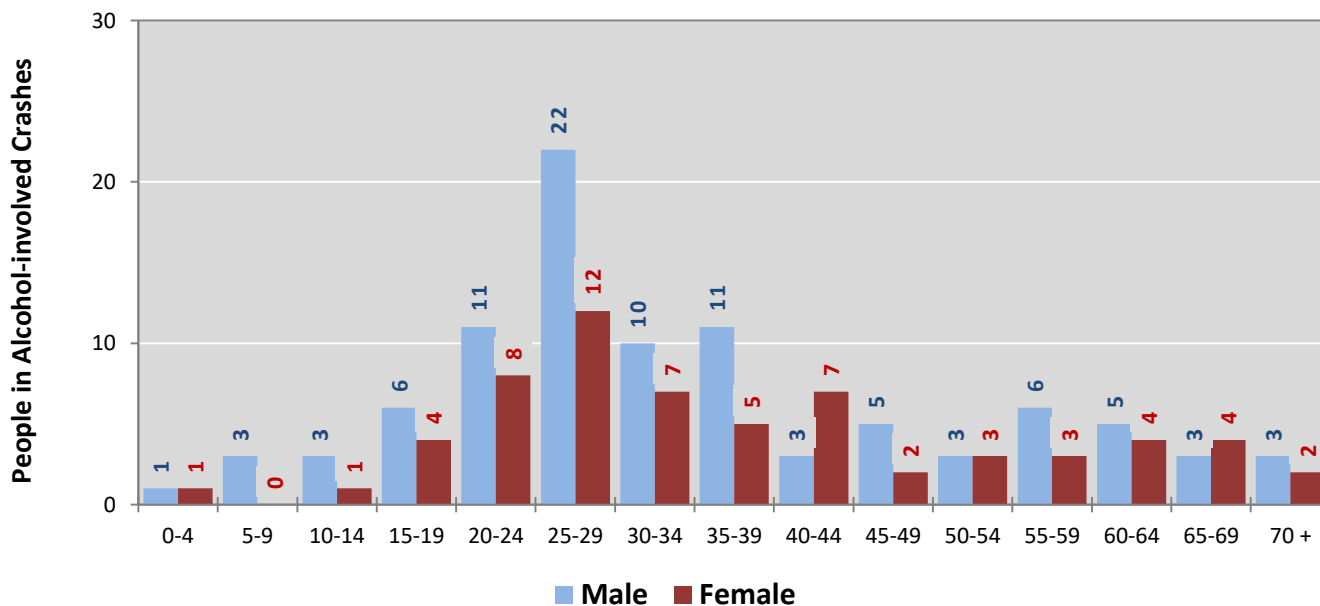


**Figure 9: People in Crashes by Age Group and Sex in Gallup, 2018**



\* In 2018, Gallup had 312 people in crashes for which age or sex data were missing.

**Figure 10: People in Alcohol-involved Crashes by Age Group and Sex in Gallup, 2018**



\* In 2018, Gallup had 27 people in alcohol-involved crashes for which age or sex data were missing.



**Table 18: Pedestrians and Pedalcyclists in Crashes  
by Age Group in Gallup, 2014-2018**

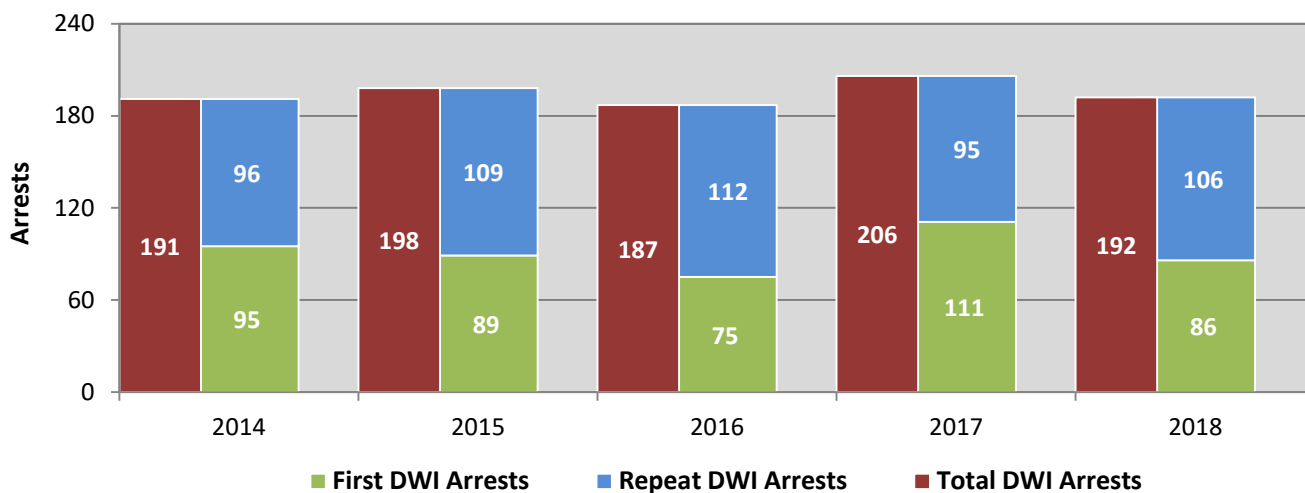
Age Groups	Pedestrians and Pedalcyclists <sup>1</sup> in Crashes					5-Year Total People
	2014	2015	2016	2017	2018	
0-4	0	0	0	1	0	1
5-9	0	1	0	0	0	1
10-14	3	1	0	0	2	6
15-19	2	2	0	4	0	8
20-24	3	1	2	1	4	11
25-29	5	3	5	3	6	22
30-34	7	0	1	7	1	16
35-39	0	4	1	2	2	9
40-44	2	5	1	4	1	13
45-49	4	2	2	2	3	13
50-54	3	7	3	0	1	14
55-59	0	0	0	3	1	4
60-64	1	0	0	2	0	3
65-69	2	0	1	1	0	4
70 +	0	1	0	1	1	3
Missing Data	4	3	4	1	2	14
<b>Total People</b>	<b>36</b>	<b>30</b>	<b>20</b>	<b>32</b>	<b>24</b>	<b>142</b>

**Table 19: Pedestrians and Pedalcyclists in Crashes by Alcohol Involvement  
and Severity of Injuries in Gallup, 2018**

Alcohol Involvement	Pedestrians and Pedalcyclists <sup>1</sup> in Crashes					Total People
	Fatalities (Class K)	Suspected Serious Injuries (Class A)	Suspected Minor Injuries (Class B)	Possible Injuries (Class C)	No Apparent Injury (Class O)	
<b>Total Pedalcyclists</b>	<b>0</b>	<b>0</b>	<b>2</b>	<b>4</b>	<b>1</b>	<b>7</b>
Involved	0	0	0	0	0	0
Not Involved	0	0	2	4	1	7
<b>Total Pedestrians</b>	<b>3</b>	<b>6</b>	<b>4</b>	<b>3</b>	<b>1</b>	<b>17</b>
Involved	2	4	2	1	0	9
Not Involved	1	2	2	2	1	8
<b>Total People</b>	<b>3</b>	<b>6</b>	<b>6</b>	<b>7</b>	<b>2</b>	<b>24</b>

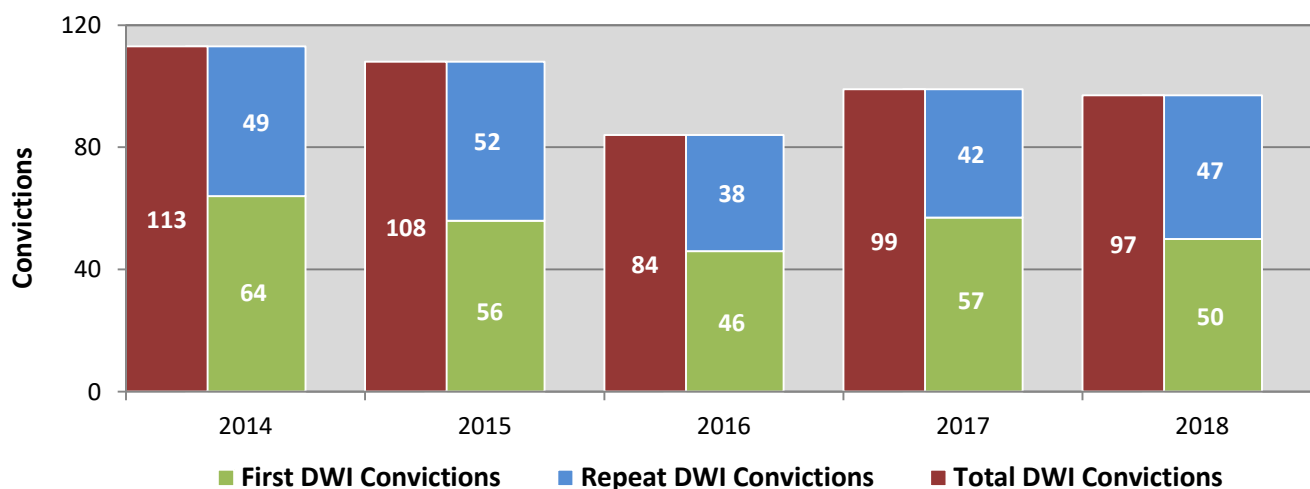
<sup>1</sup> Pedestrians and pedalcyclists are counted as non-motorized vehicles, when involved in a crash with a motor vehicle.

**Figure 11: DWI Arrests of Gallup Residents Throughout the State, Showing First and Repeat DWI Arrests, 2014-2018**



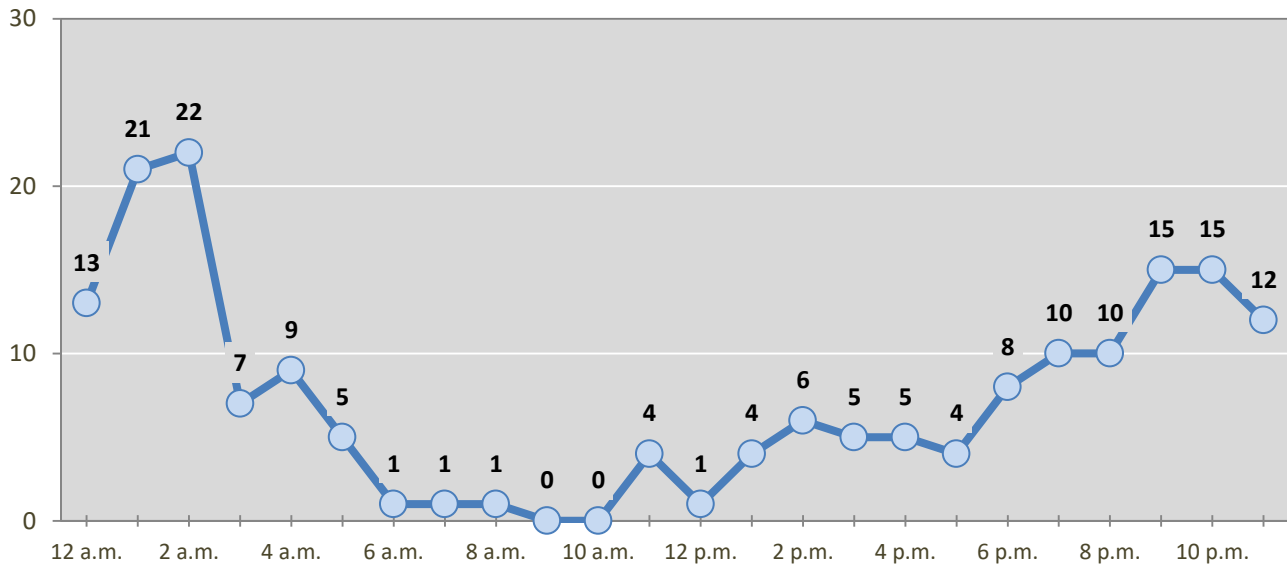
\*Values are based upon the year of the arrest.

**Figure 12: DWI Convictions of Gallup Residents Throughout the State, Showing First and Repeat DWI Convictions, 2014-2018**



\*Values are based upon the year of the conviction.

**Figure 13: DWI Arrests by Hour of Gallup Residents Throughout the State, 2018**



\* In 2018, Gallup had 13 arrests for which hour data were missing.

**Table 20: DWI Arrests by Day of Week of Gallup Residents Throughout the State, 2014-2018**

Day of Week	Year					5-Year Average
	2014	2015	2016	2017	2018	
Sunday	36	33	30	36	37	34
Monday	11	24	17	15	18	17
Tuesday	19	12	14	19	21	17
Wednesday	22	20	25	25	20	22
Thursday	29	32	21	35	14	26
Friday	40	38	39	34	29	36
Saturday	34	39	41	42	53	42
<b>Total Arrests</b>	<b>191</b>	<b>198</b>	<b>187</b>	<b>206</b>	<b>192</b>	<b>195</b>

**Table 21: Driver First DWI Arrests by Age Group  
of Gallup Residents Throughout the State, 2014-2018**

Age Groups	Driver First DWI Arrests <sup>1</sup>				
	2014	2015	2016	2017	2018
15-19	3	3	6	10	4
20-24	25	28	17	21	16
25-29	27	22	21	34	27
30-34	20	12	7	12	15
35-39	5	10	12	17	8
40-44	4	2	3	6	11
45-49	4	3	1	1	0
50-54	2	5	4	5	3
55-59	3	2	0	1	1
60-64	2	2	1	0	1
65-69	0	0	0	3	0
70 +	0	0	3	1	0
Missing Data	0	0	0	0	0
<b>Total Drivers</b>	<b>95</b>	<b>89</b>	<b>75</b>	<b>111</b>	<b>86</b>

<sup>1</sup>Values are based upon the year of the arrest.

**Table 22: Driver Repeat DWI Arrests by Age Group  
of Gallup Residents Throughout the State, 2014-2018**

Age Groups	Driver Repeat DWI Arrests <sup>1</sup>				
	2014	2015	2016	2017	2018
15-19	0	1	1	0	1
20-24	7	10	8	0	4
25-29	14	19	19	21	16
30-34	20	16	22	17	26
35-39	13	14	17	19	14
40-44	15	14	16	8	13
45-49	12	17	8	13	10
50-54	6	13	9	9	8
55-59	4	5	6	4	9
60-64	4	0	2	2	4
65-69	1	0	4	1	1
70 +	0	0	0	1	0
Missing Data	0	0	0	0	0
<b>Total Drivers</b>	<b>96</b>	<b>109</b>	<b>112</b>	<b>95</b>	<b>106</b>

<sup>1</sup>Values are based upon the year of the arrest.

**Table 23: Driver First DWI Convictions by Age Group  
of Gallup Residents Throughout the State, 2014-2018**

Age Groups	Driver First DWI Convictions <sup>1</sup>				
	2014	2015	2016	2017	2018
15-19	2	2	1	2	1
20-24	11	16	14	10	9
25-29	19	16	16	21	18
30-34	11	13	4	10	5
35-39	7	4	8	9	8
40-44	9	1	0	2	4
45-49	2	1	1	1	0
50-54	0	1	1	2	2
55-59	0	2	0	0	2
60-64	2	0	1	0	0
65-69	1	0	0	0	1
70 +	0	0	0	0	0
Missing Data	0	0	0	0	0
<b>Total Drivers</b>	<b>64</b>	<b>56</b>	<b>46</b>	<b>57</b>	<b>50</b>

<sup>1</sup> Values are based upon the year of the conviction.

**Table 24: Driver Repeat DWI Convictions by Age Group  
of Gallup Residents Throughout the State, 2014-2018**

Age Groups	Driver Repeat DWI Convictions <sup>1</sup>				
	2014	2015	2016	2017	2018
15-19	0	1	0	0	0
20-24	4	4	1	0	2
25-29	6	8	7	10	5
30-34	14	10	10	5	12
35-39	5	4	4	4	5
40-44	7	8	7	4	8
45-49	3	9	1	8	7
50-54	4	6	5	4	3
55-59	4	2	2	3	4
60-64	2	0	0	2	1
65-69	0	0	1	2	0
70 +	0	0	0	0	0
Missing Data	0	0	0	0	0
<b>Total Drivers</b>	<b>49</b>	<b>52</b>	<b>38</b>	<b>42</b>	<b>47</b>

<sup>1</sup> Values are based upon the year of the conviction.

**Table 25: Court Disposition of DWI Arrests for the State and of Gallup Residents Throughout the State, 2018**

Court Disposition of DWI Arrest <sup>1</sup>	Gallup	Statewide	Percent of Statewide
Total DWI Arrests	192	10,205	1.9%
DWI Arrests Resulting in Convictions	76	4,641	1.6%
DWI Arrests Resulting in Dismissals <sup>2</sup>	7	880	0.8%
DWI Arrests Awaiting Disposition	109	4,684	2.3%

<sup>1</sup> These are the number of DWI arrests in 2018 and whether the case resulted in a conviction or dismissal, or is still awaiting court disposition, as reported in the NM MVD Citation Tracking System (CTS) as of July 2019.

<sup>2</sup> For this table, a very small number of "not guilty" rulings may be included in the category Dismissals.

**Table 26: Average Number of Days from Date of DWI Arrest to Date of Court Disposition for the State and of Gallup Residents Throughout the State, 2018**

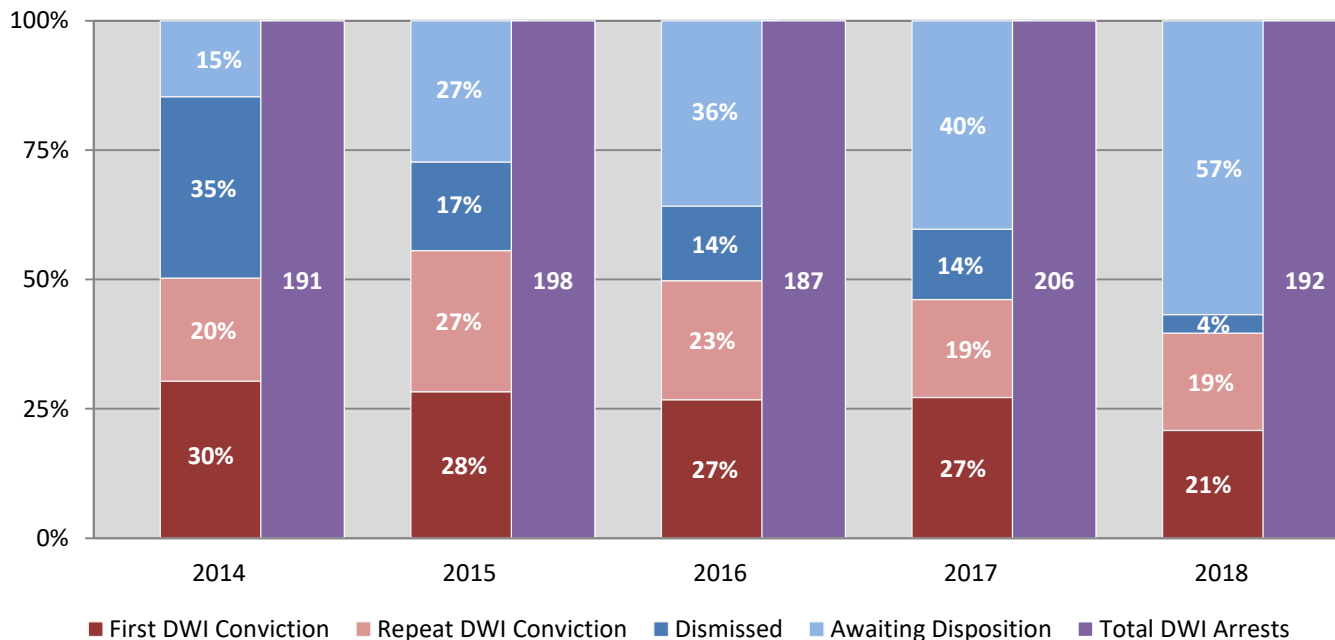
Court Disposition	Average Number of Days		Deviation from Statewide Average
	Gallup	Statewide	
DWI Conviction	127	145	-18
DWI Dismissal	177	153	24

**Table 27: Court Disposition of DWI Arrests of Gallup Residents Throughout the State, 2014-2018**

Year of DWI Arrest <sup>1</sup>	Court Disposition				Total DWI Arrests
	First DWI Conviction	Repeat DWI Conviction	Dismissed	Awaiting Disposition	
2014	58	38	67	28	191
2015	56	54	34	54	198
2016	50	43	27	67	187
2017	56	39	28	83	206
2018	40	36	7	109	192

<sup>1</sup> Values are based upon the year of the arrest.

**Figure 14: Court Dispositions by Percentage of DWI Arrests of Gallup Residents Throughout the State, 2014-2018**



\*Table 27 contains the values used to calculate percentages shown in Figure 14.