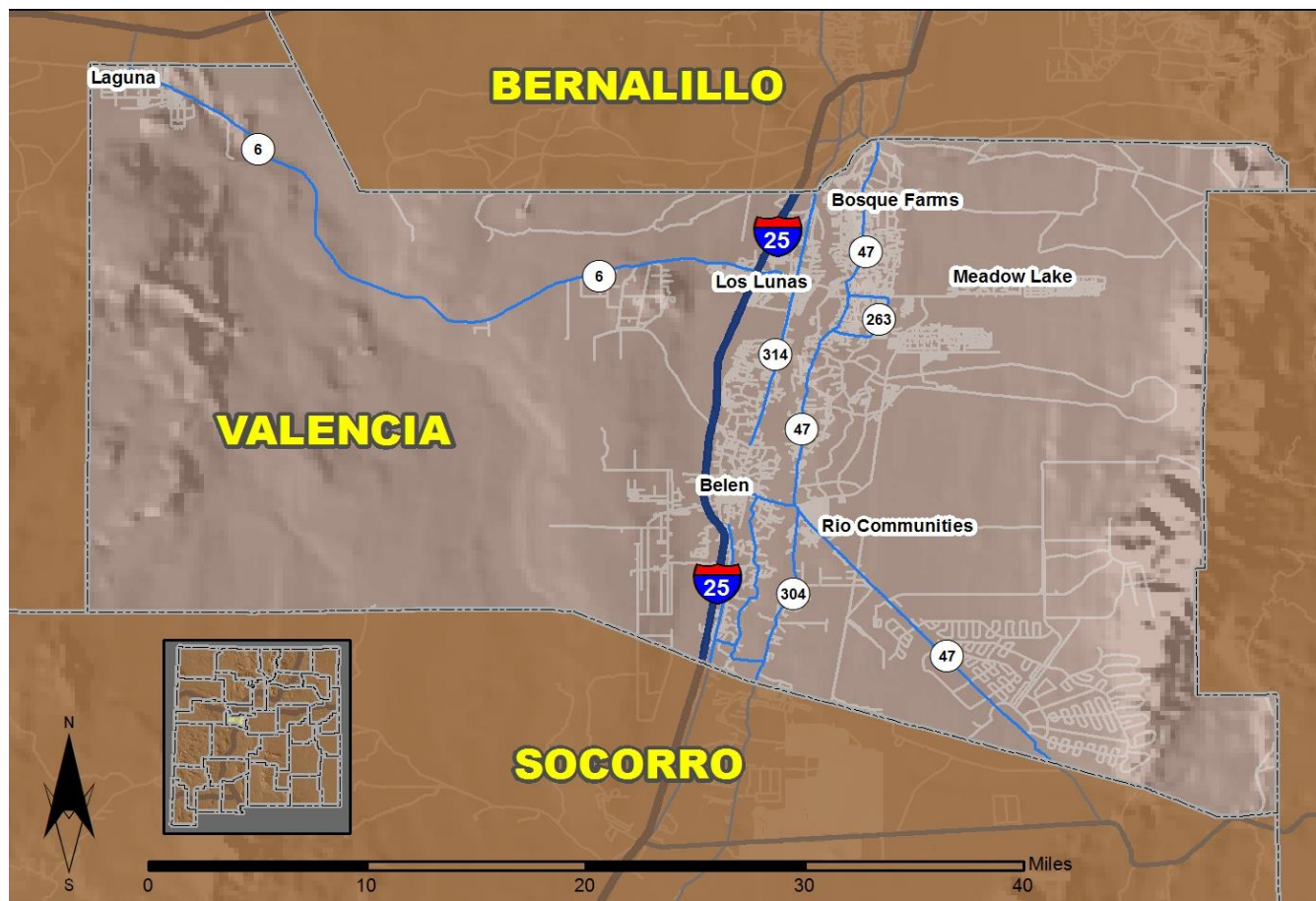


2018 Community Report

Los Lunas



Produced for the New Mexico Department of Transportation,
Traffic Safety Division, Traffic Records Bureau,
Under Contract 6093 by the University of New Mexico,
Geospatial and Population Studies, Traffic Research Unit

Distributed in compliance with New Mexico Statute 66-7-214
as a reference source regarding New Mexico traffic crashes

For the purposes of this report, data are compiled by the University of New Mexico, Geospatial and Population Studies, Traffic Research Unit (TRU), on behalf of the New Mexico Department of Transportation (NMDOT). Data in this report may differ from that in other data sources, such as the Federal Fatality Analysis Reporting System (FARS), due to the timing of publications and rules for how data are compiled and maintained in Federal vs. State databases. If you have questions regarding this report, please contact the Traffic Safety Division at 505-827-0427.

<https://gps.unm.edu/tru/crash-reports/community-reports>

Definitions

Aggravated DWI – A driver arrested for 1) driving with a BAC of 0.16 or higher, 2) driving under the influence of alcohol or drugs and causing bodily injury to a human being as a result, or 3) driving under the influence of alcohol or drugs and refusing to submit to a BAC test at the time of arrest for DWI.

Alcohol-involved Crash – A crash for which the Uniform Crash Report indicated that 1) a DWI citation was issued, 2) alcohol was a contributing factor, or 3) a person in control of a vehicle (including a pedestrian or pedalcyclist) was suspected of being under the influence of alcohol.

Alcohol-involved Driver – A person in control of a vehicle who was cited for DWI or indicated on the Uniform Crash Report as being either suspected or determined by testing to be under the influence of alcohol. There can be multiple alcohol-involved drivers in a single alcohol-involved crash.

Crash – A reported incident on a public roadway involving one or more motor vehicles that resulted in death, personal injury, or at least \$500 in property damage. Crashes on private property (such as a parking lot) are not included.

DWI Arrest (Citation) – In this report, a DWI arrest (a.k.a. a DWI citation) is a driver arrested for either DWI or aggravated DWI. New Mexico’s legal limit for presumption of driving while intoxicated (DWI) is 0.08 for non-commercial drivers older than 21 years of age, 0.04 for commercial vehicle drivers, and 0.02 for drivers younger than 21 years of age.

DWI Conviction – A driver convicted of driving under the intoxicating influence of alcohol, narcotics, or pathogenic drugs, including aggravated DWI.

Fatal Crash – A crash in which at least one person was killed. More than one person can be killed in a single fatal crash.

Fatalities – The number of people killed in a crash. The terms “killed” and “deaths” are synonymous with “fatalities.” A fatality is crash-related if it occurs at the time of the crash or if the person(s) involved in the crash dies within 30 days.

Injury Crash – A reported crash in which at least one person was injured. Injury crashes involve at least one suspected serious injury (Class A), suspected minor injury (Class B), or possible injury (Class C). Fatal crashes are not included.

Missing Data – An indication that the applicable field on the UCR form was left blank or contained an invalid code. Starting with crashes that occurred in 2012, improvements in the identification of missing data in the NMDOT crash database led to an increase in the reported amount of missing data.

Pedalcyclist – A person riding a mechanism of transport that is powered solely by pedals (a.k.a. bicyclist).

Pedestrian – A person on foot, walking, running, jogging, hiking, sitting or lying down who is involved in a motor vehicle traffic crash.

Sources

Crash Data – New Mexico Department of Transportation, Traffic Safety Division, Traffic Records Bureau, Traffic Crash Database, as of the report date below. Crash data are compiled using NMDOT Uniform Crash Reports (UCR), submitted by law enforcement agencies in the state, for any incident on a public roadway involving one or more motor vehicles that resulted in death, injury, or at least \$500 in property damage. These reports are processed by the NMDOT Traffic Records Bureau and analyzed by the University of New Mexico, Geospatial and Population Studies, Traffic Research Unit (TRU).

DWI Citation Tracking System (CTS) – New Mexico Taxation and Revenue Department (NM TRD), Motor Vehicle Division (MVD), DWI Citation Tracking System (CTS), as of July 2019. Repeat offenders are identified by the combination of account key, arrest date, and citation number. County data are based upon the county where the arrest took place. City data are based upon the city where the offender resides.

Urban Areas – Areas defined by the New Mexico Department of Transportation, Asset Management and Planning, 2010 U.S. Census Urbanized Area Boundaries, NMDOT-Adjusted, and U.S. Census Urban Clusters, August 21, 2013. Urban areas for crash years 2013-2017 include a 1/2 mile buffer extending out from those urban boundaries. In crashes before 2013, “urban” was defined as a town or city with a population of at least 2,500 people.

**Table 1: Total Crashes and Alcohol-involved Crashes by
Crash Severity in Los Lunas, 2009-2018**

Year	Total Crashes				Alcohol-involved Crashes			
	Fatal	Injury	Property Damage Only	Total	Fatal	Injury	Property Damage Only	Total
2009	2	145	381	528	0	12	11	23
2010	3	140	277	420	2	9	4	15
2011	4	110	239	353	0	5	8	13
2012	1	11	55	67	0	2	2	4
2013	0	115	245	360	0	6	2	8
2014	0	95	248	343	0	5	1	6
2015	0	143	295	438	0	7	6	13
2016	1	143	302	446	0	5	9	14
2017	1	158	283	442	0	7	6	13
2018	2	138	249	389	0	2	8	10

**Figure 1: Alcohol-involved Fatal and Injury Crashes Compared with
Non-alcohol-involved Fatal and Injury Crashes in Los Lunas, 2009-2018**

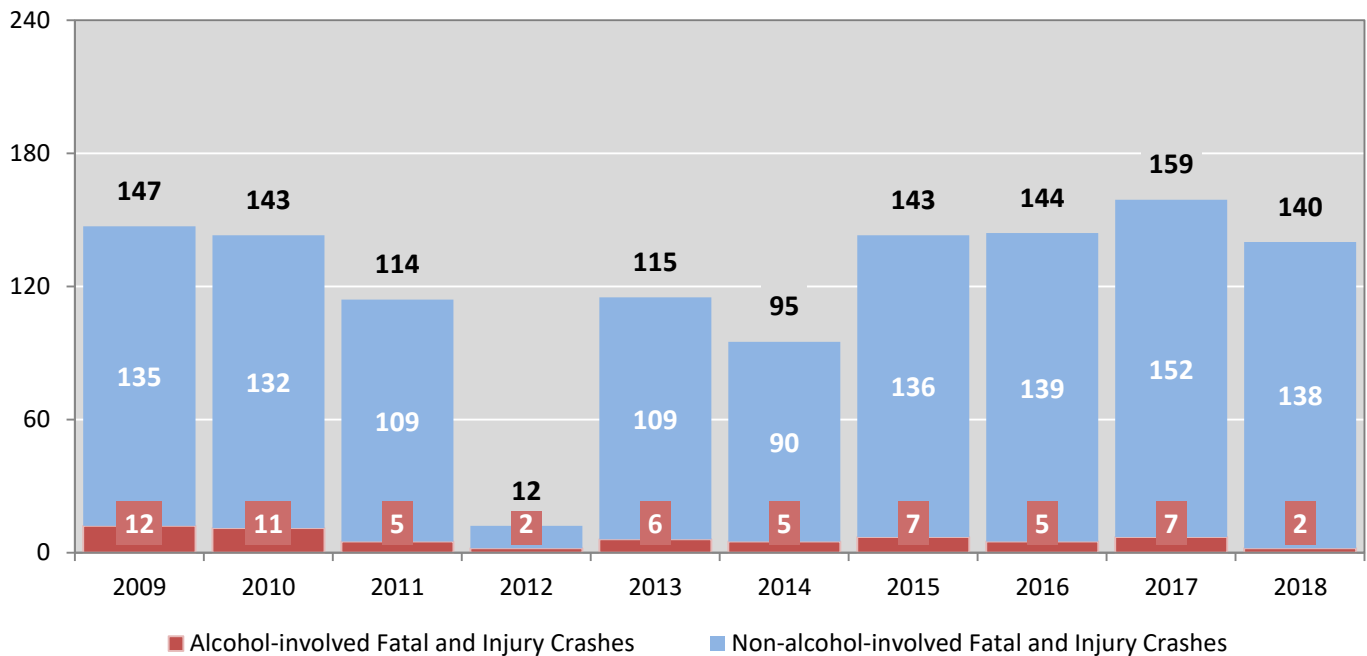


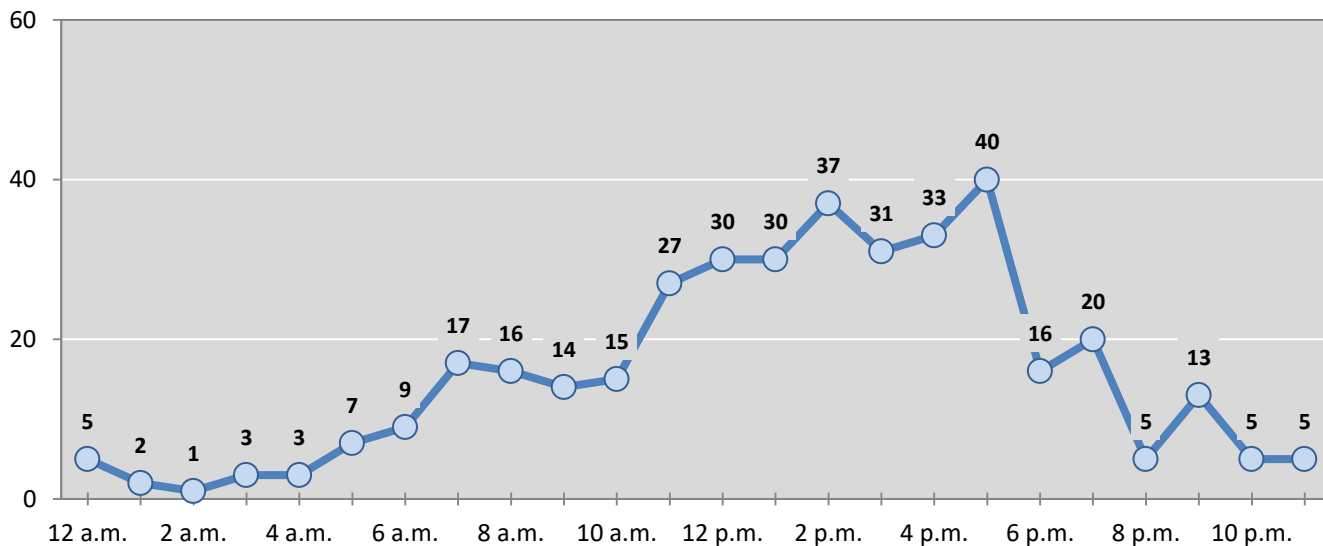
Table 2: Crashes by Month in Los Lunas, 2014-2018

Month	Crashes					5-Year Average
	2014	2015	2016	2017	2018	
January	24	43	34	36	39	35
February	26	37	35	20	3	24
March	17	33	29	35	30	29
April	30	36	34	33	35	34
May	27	28	34	50	39	36
June	21	34	37	39	40	34
July	32	36	51	38	37	39
August	31	33	43	47	43	39
September	32	32	39	25	30	32
October	38	35	40	33	45	38
November	23	48	42	38	2	31
December	42	43	28	48	46	41
Total Crashes	343	438	446	442	389	412

Table 3: Alcohol-involved Crashes by Month in Los Lunas, 2014-2018

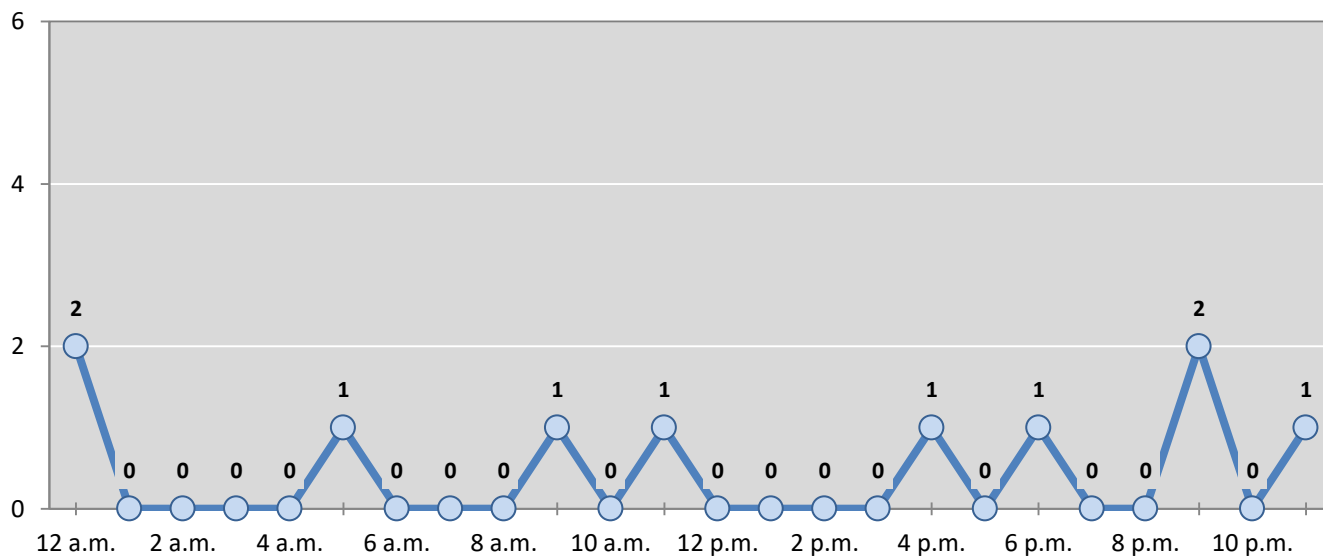
Month	Alcohol-involved Crashes					5-Year Average
	2014	2015	2016	2017	2018	
January	0	4	0	0	0	1
February	1	0	0	1	0	0
March	0	0	0	3	2	1
April	1	0	1	1	0	1
May	0	0	0	0	1	0
June	0	2	3	2	1	2
July	0	0	1	0	2	1
August	0	2	1	2	1	1
September	0	0	3	0	0	1
October	3	2	4	1	0	2
November	0	2	0	2	2	1
December	1	1	1	1	1	1
Total Crashes	6	13	14	13	10	11

Figure 2: Crashes by Hour in Los Lunas, 2018



* In 2018, Los Lunas had 5 crashes for which hour data were missing.

Figure 3: Alcohol-involved Crashes by Hour in Los Lunas, 2018



* In 2018, Los Lunas had 0 alcohol-involved crashes for which hour data were missing.

Table 4: Alcohol-involved Crashes by Day of Week in Los Lunas, 2014-2018

Day of Week	Alcohol-involved Crashes					5-Year Average
	2014	2015	2016	2017	2018	
Sunday	0	4	3	2	2	2
Monday	1	0	2	0	2	1
Tuesday	2	1	1	3	1	2
Wednesday	0	1	1	2	0	1
Thursday	1	0	2	0	0	1
Friday	2	5	0	2	2	2
Saturday	0	2	5	4	3	3
Total Crashes	6	13	14	13	10	11

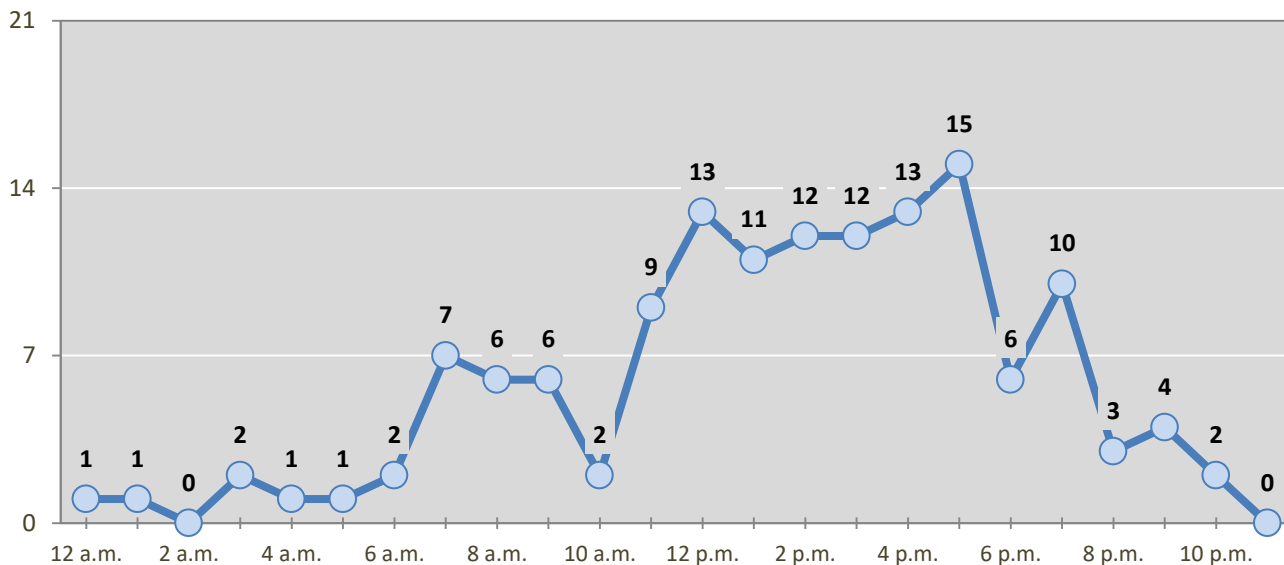
Table 5: Fatal and Injury Crashes by Day of Week in Los Lunas, 2014-2018

Day of Week	Fatal and Injury Crashes					5-Year Average
	2014	2015	2016	2017	2018	
Sunday	10	11	11	9	13	11
Monday	6	23	25	35	18	21
Tuesday	17	19	21	21	27	21
Wednesday	13	24	27	25	18	21
Thursday	16	20	25	21	12	19
Friday	14	25	26	29	28	24
Saturday	19	21	9	19	24	18
Total Crashes	95	143	144	159	140	136

Table 6: Pedestrian and Pedalcyclist Crashes by Day of Week in Los Lunas, 2014-2018

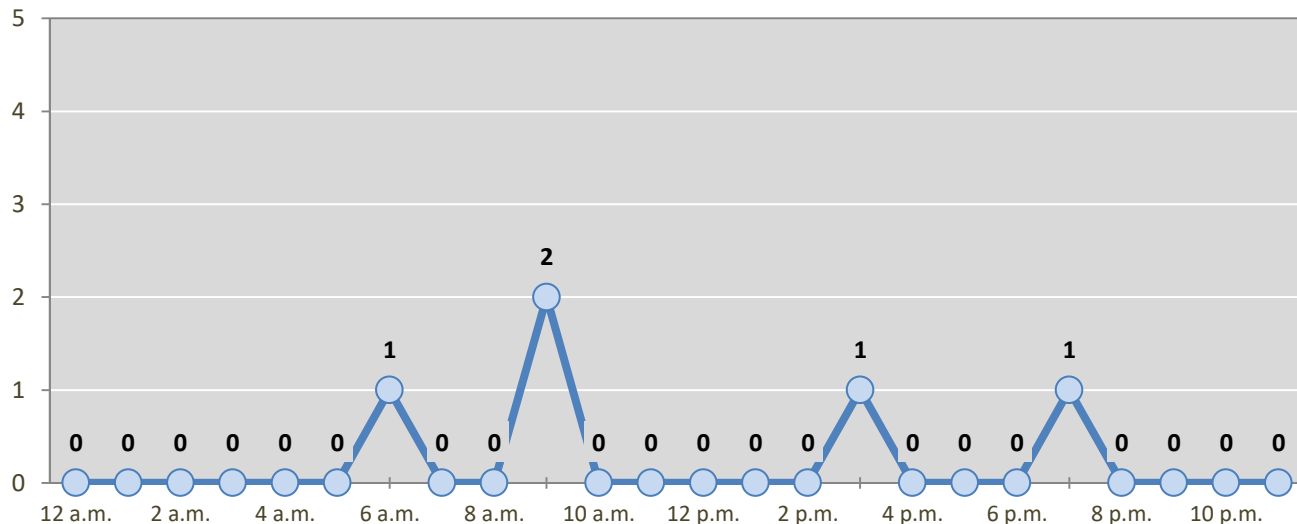
Day of Week	Pedestrian and Pedalcyclist Crashes					5-Year Average
	2014	2015	2016	2017	2018	
Sunday	0	2	1	0	0	1
Monday	1	0	1	1	1	1
Tuesday	0	1	2	3	2	2
Wednesday	2	1	0	3	2	2
Thursday	0	2	0	1	0	1
Friday	1	0	2	0	0	1
Saturday	2	1	0	1	0	1
Total Crashes	6	7	6	9	5	7

Figure 4: Fatal and Injury Crashes by Hour in Los Lunas, 2018



* In 2018, Los Lunas had 1 crashes for which hour data were missing.

Figure 5: Pedestrian and Pedalcyclist Crashes by Hour in Los Lunas, 2018



* In 2018, Los Lunas had 0 crashes for which hour data were missing.

Table 7: Severity of Injuries to People in Crashes by Rural and Urban Location in Los Lunas, 2018

Urban and Rural Locations by Alcohol-involvement	People in Crashes by Severity of Injuries					Total People
	Fatalities (Class K)	Suspected Serious Injuries (Class A)	Suspected Minor Injuries (Class B)	Possible Injuries (Class C)	No Apparent Injuries (Class O)	
People in Alcohol-involved Crashes	0	0	1	1	14	16
Urban	0	0	0	1	13	14
Rural Non-Interstate	0	0	1	0	1	2
Rural Interstate	0	0	0	0	0	0
People in Crashes	2	4	40	152	932	1,130
Urban	2	2	36	141	849	1,030
Rural Non-Interstate	0	2	3	7	69	81
Rural Interstate	0	0	1	4	14	19
Percent in Alcohol-involved Crashes	0%	0%	3%	1%	2%	1%

Table 8: Total Crashes by Roadway System and Crash Severity in Los Lunas, 2014-2018

Crash Severity by System	Crashes by Year					5-Year Average
	2014	2015	2016	2017	2018	
Total Rural Interstate	0	0	0	0	6	1
Fatal Crash	0	0	0	0	0	0
Injury Crash	0	0	0	0	2	0
Property Damage Only Crash	0	0	0	0	4	1
Total Rural Non-Interstate	0	3	3	3	29	7
Fatal Crash	0	0	0	0	0	0
Injury Crash	0	0	1	2	9	2
Property Damage Only Crash	0	3	2	1	20	5
Total Urban	343	435	443	439	354	403
Fatal Crash	0	0	1	1	2	1
Injury Crash	95	143	142	156	127	133
Property Damage Only Crash	248	292	300	282	225	269

Table 9: Total Crashes by Crash Classification in Los Lunas, 2014-2018

Crash Classification	Total Crashes by Year					5-Year Average
	2014	2015	2016	2017	2018	
Animal	2	3	1	2	1	2
Fixed Object	20	27	30	37	32	29
Other (Non-Collision)	4	6	3	5	3	4
Other (Object)	5	3	4	7	11	6
Other Vehicle	282	365	380	365	318	342
Overturn/Rollover	7	6	11	7	7	8
Parked Vehicle	6	8	8	9	8	8
Pedalcyclist	5	3	1	2	2	3
Pedestrian	2	4	5	7	3	4
Railroad Train	0	0	0	0	0	0
Rollover	0	11	1	0	0	2
Vehicle on Other Road	4	1	0	0	0	1
Missing Data	6	1	2	1	4	3
Total Crashes	343	438	446	442	389	412

Table 10: Vehicles in Crashes by Vehicle Type in Los Lunas, 2014-2018

Vehicle Type ¹	Vehicles in Crashes by Vehicle Type					5-Year Average
	2014	2015	2016	2017	2018	
Bus	1	2	1	3	4	2
Motorcycle	11	7	5	5	13	8
Passenger	334	455	454	410	374	405
Pedalcyclist	4	3	1	2	2	2
Pedestrian	2	4	7	7	3	5
Pickup	154	184	200	195	163	179
Semi	13	12	17	23	19	17
Van/SUV/4WD	134	145	179	199	166	165
Other Vehicle	7	21	11	2	5	9
Missing Data	12	19	8	7	11	11
Total Vehicles	672	852	883	853	760	804

¹ Pedestrians and pedalcyclists are counted as non-motorized vehicles, when involved in a crash with a motor vehicle. See Page 17 for data on drivers of non-motorized vehicles in crashes (i.e. pedestrians and pedalcyclists).

Table 11: Motor Vehicle Drivers in Crashes by Vehicle Type and Age Group in Los Lunas, 2018

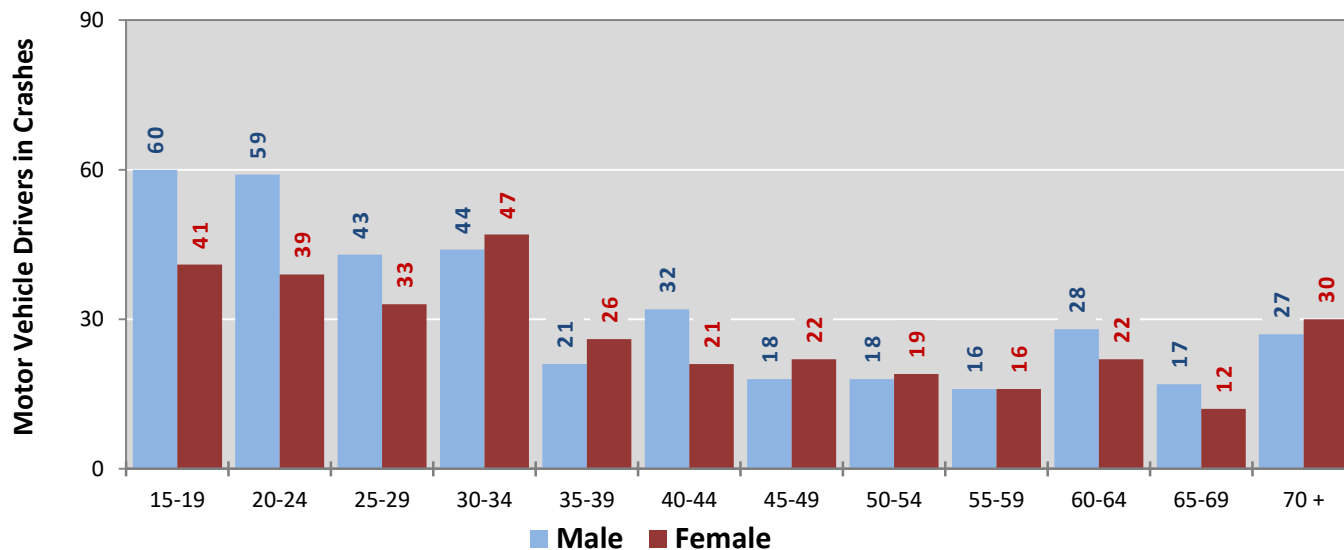
Age Groups	Motor Vehicle ¹ Drivers by Vehicle Type and Age Group								Total Drivers
	Bus	Motor-cycle	Passenger	Pickup	Semi	Van 4WD SUV	Other Vehicle	Missing Data	
15-19	0	0	58	24	1	17	1	0	101
20-24	0	3	66	16	0	11	0	2	98
25-29	0	2	47	8	2	15	1	1	76
30-34	0	2	40	23	4	22	0	0	91
35-39	0	0	21	13	1	12	0	0	47
40-44	0	2	22	11	2	16	0	0	53
45-49	1	0	15	9	2	13	0	0	40
50-54	1	1	14	10	1	10	0	0	37
55-59	0	0	13	7	0	11	0	1	32
60-64	1	1	16	16	3	13	0	0	50
65-69	0	0	15	7	0	7	0	0	29
70 +	1	0	31	8	0	15	2	0	57
Missing Data	0	2	16	11	3	4	1	7	44
Total Drivers	4	13	374	163	19	166	5	11	755

Table 12: Alcohol-involved Motor Vehicle Drivers in Crashes by Vehicle Type and Age Group in Los Lunas, 2018

Age Groups	Alcohol-involved Motor Vehicle ¹ Drivers by Vehicle Type and Age Group								Total Drivers
	Bus	Motor-cycle	Passenger	Pickup	Semi	Van 4WD SUV	Other Vehicle	Missing Data	
15-19	0	0	0	0	0	0	0	0	0
20-24	0	0	0	1	0	0	0	0	1
25-29	0	0	1	0	0	1	0	0	2
30-34	0	1	2	1	0	0	0	0	4
35-39	0	0	0	0	0	0	0	0	0
40-44	0	0	1	0	0	1	0	0	2
45-49	0	0	0	0	0	0	0	0	0
50-54	0	0	0	0	0	0	0	0	0
55-59	0	0	0	0	0	1	0	0	1
60-64	0	0	0	0	0	0	0	0	0
65-69	0	0	0	0	0	0	0	0	0
70 +	0	0	0	0	0	0	0	0	0
Missing Data	0	0	0	0	0	0	0	0	0
Total Drivers	0	1	4	2	0	3	0	0	10

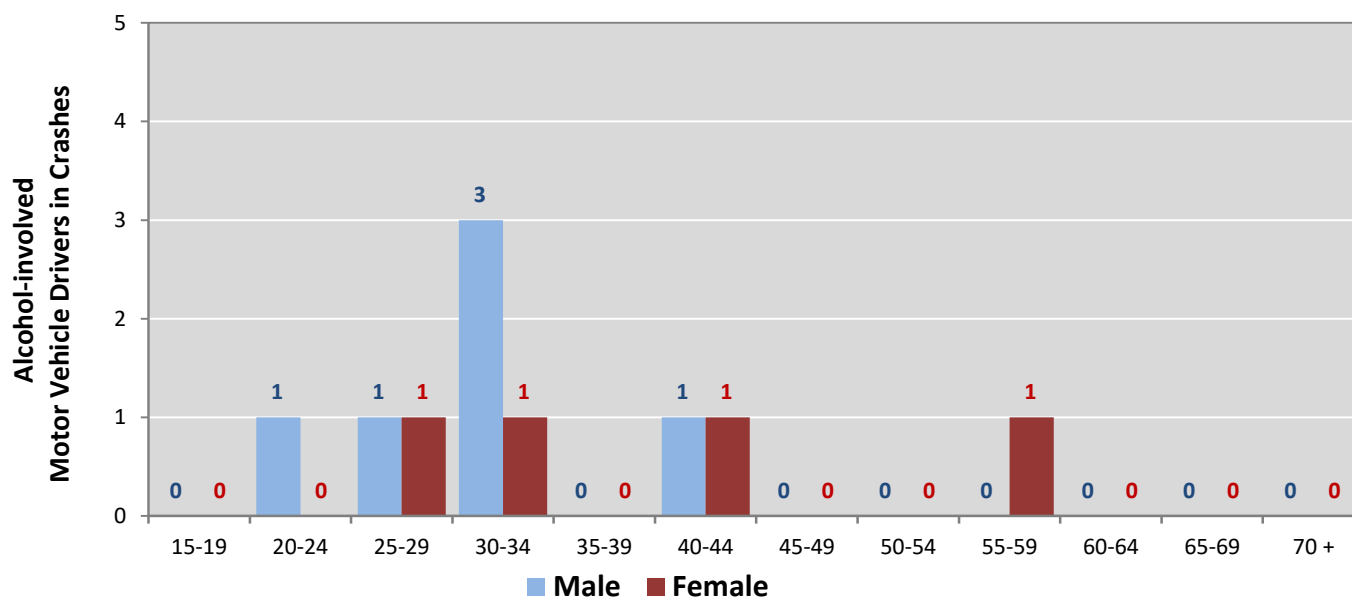
¹ See Page 17 for data on drivers of non-motorized vehicles in crashes (i.e. pedestrians and pedalcyclists).

Figure 6: Motor Vehicle Drivers in Crashes by Age Group and Sex in Los Lunas, 2018



* In 2018, Los Lunas had 44 drivers in crashes for which age or sex data were missing.

Figure 7: Alcohol-involved Motor Vehicle Drivers in Crashes by Age Group and Sex in Los Lunas, 2018



* In 2018, Los Lunas had 0 drivers in crashes for which age or sex data were missing.

**Table 13: Alcohol-involved Motor Vehicle Drivers Under 21
(Ages 15-20) in Crashes in Los Lunas, 2014-2018**

Age ¹	Year					5-Year Total
	2014	2015	2016	2017	2018	
15	0	0	0	0	0	0
16	0	0	1	0	0	1
17	1	0	0	0	0	1
18	0	1	0	0	0	1
19	2	0	0	0	0	2
20	0	0	0	1	1	2
Total Drivers	3	1	1	1	1	7

**Table 14: Motor Vehicle Drivers Under 21 (Ages 15-20) in Crashes
by Age, Sex and Alcohol-involvement in Los Lunas, 2018**

Age ¹	Total Drivers				Alcohol-involved Drivers			
	Sex		Total Drivers	Percent of Total	Sex		Total Drivers	Percent of Total
	Male	Female			Male	Female		
15	7	0	7	6%	0	0	0	0%
16	10	7	17	14%	0	0	0	0%
17	16	9	25	20%	0	0	0	0%
18	11	13	24	20%	0	0	0	0%
19	16	12	28	23%	0	0	0	0%
20	14	8	22	18%	1	0	1	100%
Total Drivers	74	49	123	100%	1	0	1	100%

¹ For analysis of drivers under age 21, when the driver age or sex are not identified on the crash report (typically hit-and-run drivers), the driver data are considered unreliable and are excluded from the analysis.

**Table 15: Frequency of Contributing Factors in Crashes
by Crash Severity in Los Lunas, 2018**

Contributing Factors	Frequency of Contributing Factor ¹ by Crash Severity			
	Frequency in Fatal Crashes	Frequency in Injury Crashes	Frequency in Property Damage Only Crashes	Frequency in All Crashes
Human	4	161	294	459
Driver Inattention	2	55	89	146
Failed to Yield Right of Way	0	27	56	83
Following Too Closely	0	30	33	63
Other Improper Driving	0	12	28	40
Excessive Speed	1	10	8	19
Avoid No Contact - Vehicle	0	5	9	14
Improper Lane Change	0	3	8	11
Improper Backing	0	1	9	10
Alcohol Involved	0	2	8	10
Made Improper Turn	0	2	7	9
Speed Too Fast for Conditions	0	1	8	9
Drug Involved	1	2	6	9
Disregarded Traffic Signal	0	3	5	8
Drove Left Of Center	0	3	5	8
Avoid No Contact - Other	0	3	2	5
Improper Overtaking	0	0	5	5
Cell Phone	0	0	4	4
Driverless Moving Vehicle	0	0	1	1
Failed to Yield to Emergency Vehicle	0	0	1	1
Failed to Yield to Police Vehicle	0	0	1	1
Passed Stop Sign	0	1	0	1
Texting	0	0	1	1
Vehicle Skidded Before Brake	0	1	0	1
High Speed Pursuit	0	0	0	0
Pedestrian Error	0	0	0	0
Vehicle	0	3	7	10
Other Mechanical Defect	0	0	5	5
Inadequate Brakes	0	2	1	3
Defective Steering	0	1	1	2
Defective Tires	0	0	0	0
Environment	0	0	0	0
Low Visibility Due to Smoke	0	0	0	0
Road Defect	0	0	0	0
Traffic Control Not Functioning	0	0	0	0
Other	1	135	212	348
None	1	128	196	325
Other - No Driver Error	0	7	16	23

¹ Multiple contributing factors may be reported for any vehicle in a crash.

Table 16: People in Crashes by Crash Classification and Severity of Injuries in Los Lunas, 2018

Crash Classification	People in Crashes by Severity of Injuries					Total People
	Fatalities (Class K)	Suspected Serious Injuries (Class A)	Suspected Minor Injuries (Class B)	Possible Injuries (Class C)	No Apparent Injuries (Class O)	
Animal	0	0	0	0	3	3
Fixed Object	0	0	3	3	29	35
Other (Non-Collision)	0	0	1	0	2	3
Other (Object)	0	0	4	1	15	20
Other Vehicle	1	2	30	140	844	1,017
Overturn/Rollover	1	2	1	3	9	16
Parked Vehicle	0	0	0	0	17	17
Pedalcyclist	0	0	0	2	2	4
Pedestrian	0	0	1	2	3	6
Railroad Train	0	0	0	0	0	0
Rollover	0	0	0	0	0	0
Vehicle on Other Road	0	0	0	0	0	0
Missing Data	0	0	0	1	8	9
Total People	2	4	40	152	932	1,130

**Table 17: Killed or Injured Unbelted People in Crashes
by Sex and Age Group in Los Lunas, 2018**

Age Groups	Unbelted People Killed or Injured ^{1,2}				Total People
	Male	Percent of Male	Female	Percent of Female	
0-4	0	0%	0	0%	0
5-9	0	0%	1	50%	1
10-14	0	0%	0	0%	0
15-19	1	33%	0	0%	1
20-24	1	33%	0	0%	1
25-29	0	0%	0	0%	0
30-34	1	33%	0	0%	1
35-39	0	0%	0	0%	0
40-44	0	0%	0	0%	0
45-49	0	0%	0	0%	0
50-54	0	0%	0	0%	0
55-59	0	0%	0	0%	0
60-64	0	0%	0	0%	0
65-69	0	0%	1	50%	1
70 +	0	0%	0	0%	0
Missing Data	0	0%	0	0%	0
Total People	3	100%	2	100%	5

¹ People injured are in one of three categories: suspected serious injury, suspected minor injury, or possible injury.

² Excludes people in or on buses, heavy trucks, motorcycles, or ATVs.

**Figure 8: Seatbelt Use by People in Crashes with Fatal or
Suspected Serious Injuries in Los Lunas, 2014-2018**

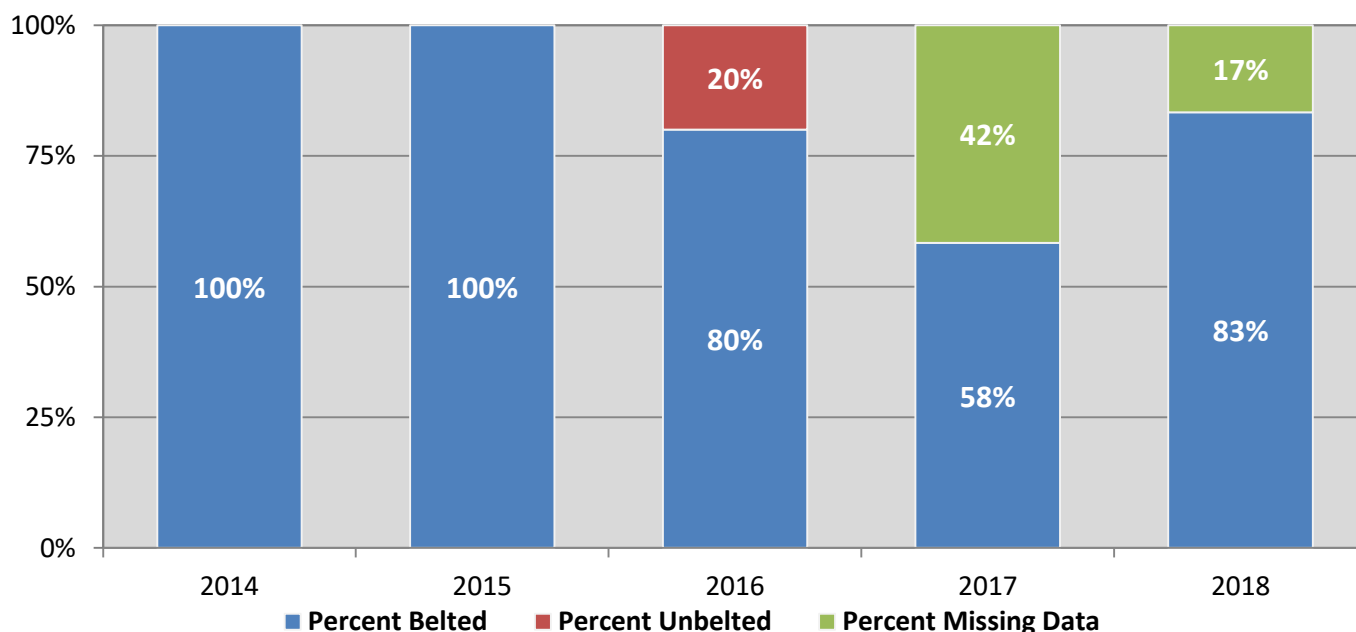
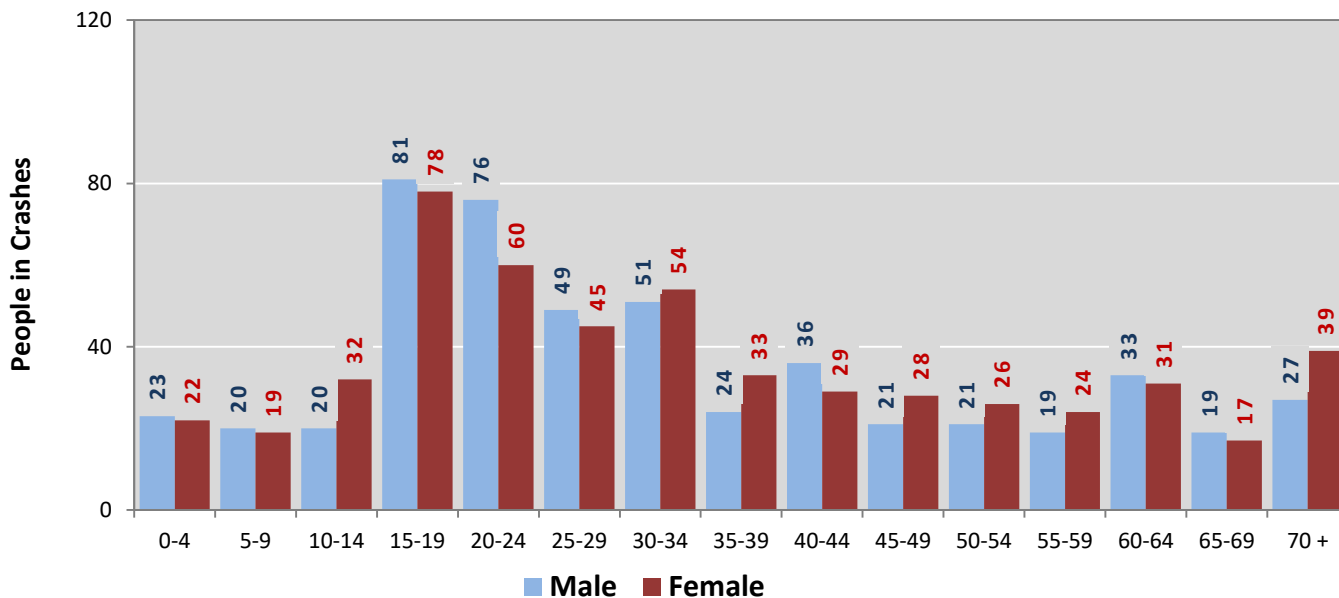
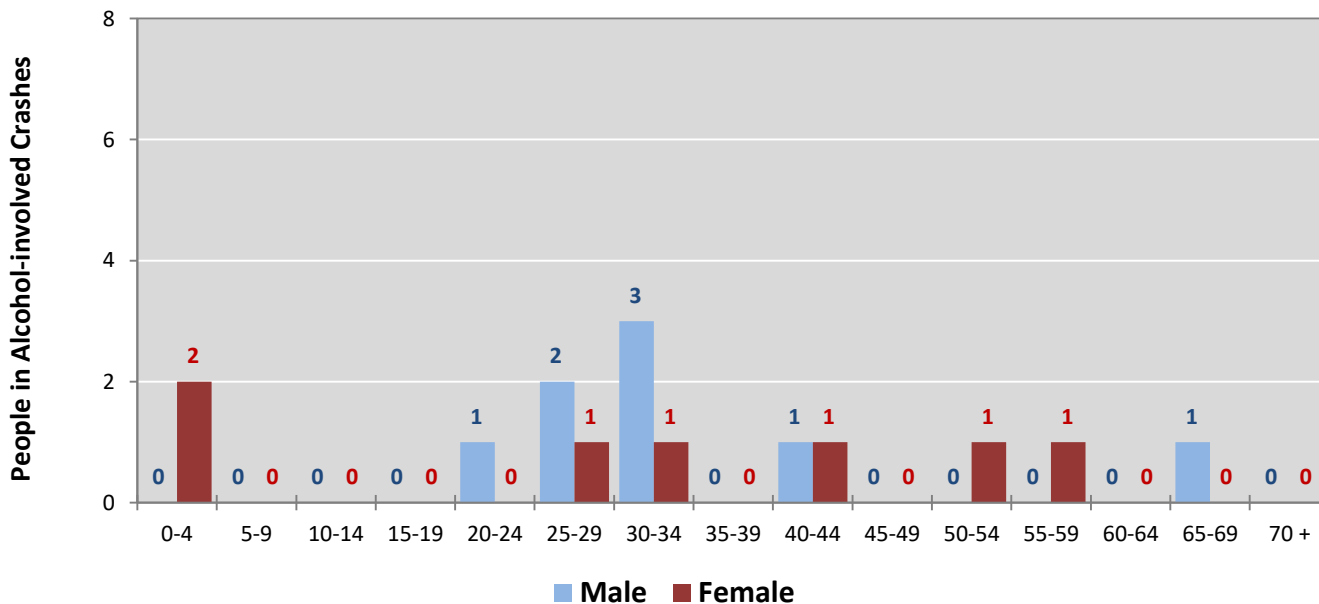


Figure 9: People in Crashes by Age Group and Sex in Los Lunas, 2018



* In 2018, Los Lunas had 73 people in crashes for which age or sex data were missing.

Figure 10: People in Alcohol-involved Crashes by Age Group and Sex in Los Lunas, 2018



* In 2018, Los Lunas had 1 people in alcohol-involved crashes for which age or sex data were missing.

**Table 18: Pedestrians and Pedalcyclists in Crashes
by Age Group in Los Lunas, 2014-2018**

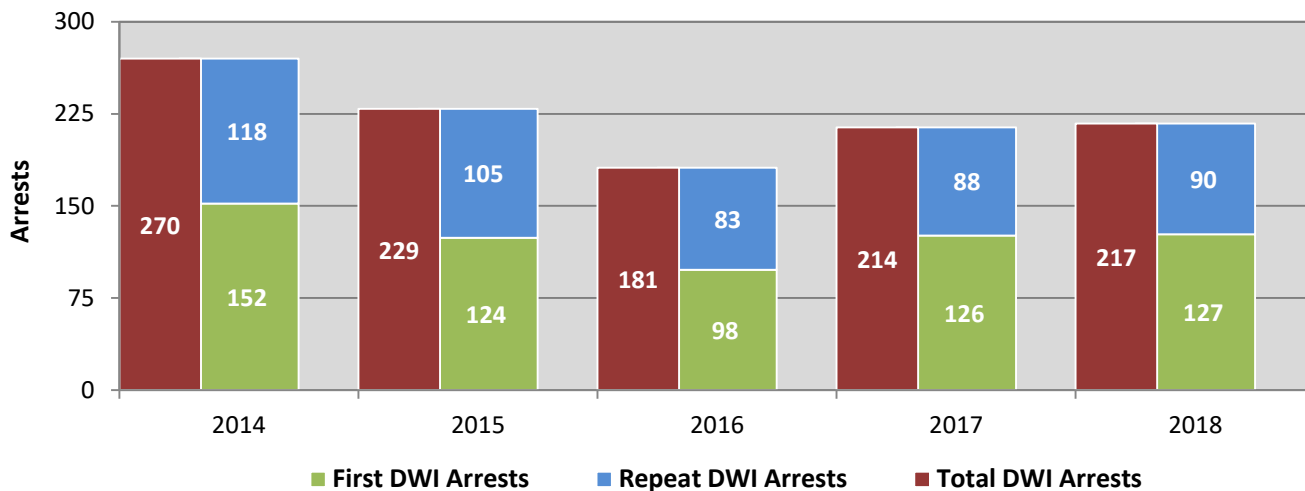
Age Groups	Pedestrians and Pedalcyclists ¹ in Crashes					5-Year Total People
	2014	2015	2016	2017	2018	
0-4	0	0	0	0	0	0
5-9	0	0	1	0	0	1
10-14	2	1	3	1	0	7
15-19	1	1	0	1	1	4
20-24	1	0	0	1	0	2
25-29	0	1	1	2	0	4
30-34	1	1	0	1	0	3
35-39	0	1	0	0	0	1
40-44	0	1	0	1	0	2
45-49	0	0	1	1	0	2
50-54	0	0	0	0	1	1
55-59	1	0	1	0	2	4
60-64	0	0	0	0	1	1
65-69	0	0	1	1	0	2
70 +	0	0	0	0	0	0
Missing Data	0	1	0	0	0	1
Total People	6	7	8	9	5	35

**Table 19: Pedestrians and Pedalcyclists in Crashes by Alcohol Involvement
and Severity of Injuries in Los Lunas, 2018**

Alcohol Involvement	Pedestrians and Pedalcyclists ¹ in Crashes					Total People
	Fatalities (Class K)	Suspected Serious Injuries (Class A)	Suspected Minor Injuries (Class B)	Possible Injuries (Class C)	No Apparent Injury (Class O)	
Total Pedalcyclists	0	0	0	2	0	2
Involved	0	0	0	0	0	0
Not Involved	0	0	0	2	0	2
Total Pedestrians	0	0	1	2	0	3
Involved	0	0	0	0	0	0
Not Involved	0	0	1	2	0	3
Total People	0	0	1	4	0	5

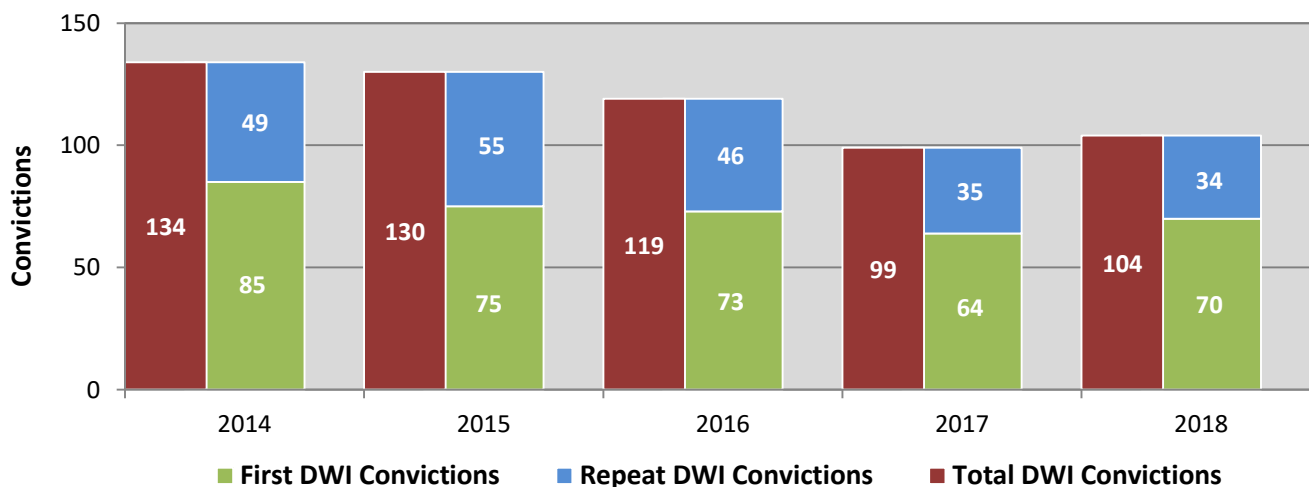
¹ Pedestrians and pedalcyclists are counted as non-motorized vehicles, when involved in a crash with a motor vehicle.

Figure 11: DWI Arrests of Los Lunas Residents Throughout the State, Showing First and Repeat DWI Arrests, 2014-2018



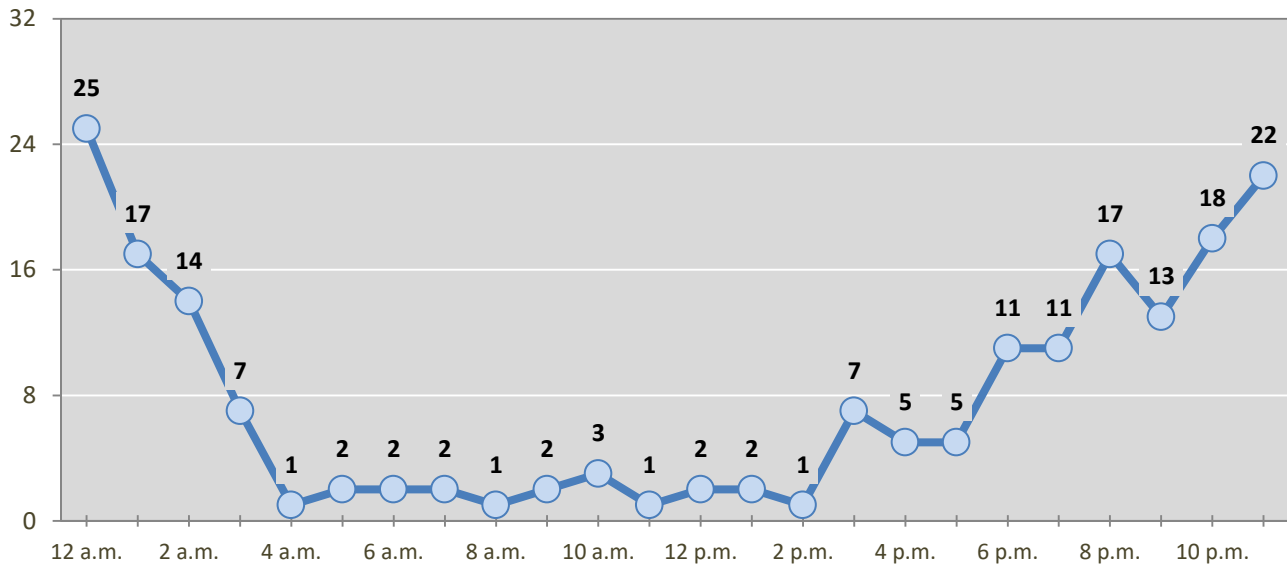
*Values are based upon the year of the arrest.

Figure 12: DWI Convictions of Los Lunas Residents Throughout the State, Showing First and Repeat DWI Convictions, 2014-2018



*Values are based upon the year of the conviction.

Figure 13: DWI Arrests by Hour of Los Lunas Residents Throughout the State, 2018



* In 2018, Los Lunas had 26 arrests for which hour data were missing.

Table 20: DWI Arrests by Day of Week of Los Lunas Residents Throughout the State, 2014-2018

Day of Week	Year					5-Year Average
	2014	2015	2016	2017	2018	
Sunday	47	44	30	33	37	38
Monday	33	14	18	26	15	21
Tuesday	21	12	9	8	17	13
Wednesday	26	21	23	12	17	20
Thursday	26	29	29	26	38	30
Friday	54	49	27	35	43	42
Saturday	63	60	45	74	50	58
Total Arrests	270	229	181	214	217	222

**Table 21: Driver First DWI Arrests by Age Group
of Los Lunas Residents Throughout the State, 2014-2018**

Age Groups	Driver First DWI Arrests ¹				
	2014	2015	2016	2017	2018
15-19	13	13	10	11	5
20-24	41	31	25	31	40
25-29	26	21	21	27	27
30-34	25	14	14	21	13
35-39	15	10	10	12	10
40-44	11	11	6	9	11
45-49	8	9	2	4	4
50-54	4	5	4	6	6
55-59	3	4	4	1	8
60-64	3	4	1	2	2
65-69	3	1	0	2	1
70 +	0	1	0	0	0
Missing Data	0	0	1	0	0
Total Drivers	152	124	98	126	127

¹ Values are based upon the year of the arrest.

**Table 22: Driver Repeat DWI Arrests by Age Group
of Los Lunas Residents Throughout the State, 2014-2018**

Age Groups	Driver Repeat DWI Arrests ¹				
	2014	2015	2016	2017	2018
15-19	0	1	0	1	0
20-24	10	18	8	9	9
25-29	18	13	11	13	11
30-34	24	16	13	12	8
35-39	16	11	11	8	14
40-44	12	16	15	16	14
45-49	11	11	8	13	8
50-54	13	8	8	13	9
55-59	7	5	5	2	4
60-64	6	3	2	1	7
65-69	1	3	2	0	4
70 +	0	0	0	0	2
Missing Data	0	0	0	0	0
Total Drivers	118	105	83	88	90

¹ Values are based upon the year of the arrest.

**Table 23: Driver First DWI Convictions by Age Group
of Los Lunas Residents Throughout the State, 2014-2018**

Age Groups	Driver First DWI Convictions ¹				
	2014	2015	2016	2017	2018
15-19	3	4	2	4	4
20-24	21	19	22	16	22
25-29	18	14	15	10	18
30-34	15	12	5	11	10
35-39	12	6	9	9	4
40-44	7	3	8	6	4
45-49	3	4	4	4	1
50-54	3	5	2	1	5
55-59	1	4	4	0	2
60-64	1	2	1	3	0
65-69	1	2	1	0	0
70 +	0	0	0	0	0
Missing Data	0	0	0	0	0
Total Drivers	85	75	73	64	70

¹ Values are based upon the year of the conviction.

**Table 24: Driver Repeat DWI Convictions by Age Group
of Los Lunas Residents Throughout the State, 2014-2018**

Age Groups	Driver Repeat DWI Convictions ¹				
	2014	2015	2016	2017	2018
15-19	0	0	1	0	0
20-24	3	1	3	5	1
25-29	7	7	8	3	5
30-34	7	9	11	3	4
35-39	11	6	4	5	2
40-44	6	10	3	6	5
45-49	5	6	3	6	4
50-54	5	6	4	4	7
55-59	2	7	3	1	1
60-64	2	2	3	1	1
65-69	1	1	3	1	3
70 +	0	0	0	0	1
Missing Data	0	0	0	0	0
Total Drivers	49	55	46	35	34

¹ Values are based upon the year of the conviction.

**Table 25: Court Disposition of DWI Arrests for the State
and of Los Lunas Residents Throughout the State, 2018**

Court Disposition of DWI Arrest ¹	Los Lunas	Statewide	Percent of Statewide
Total DWI Arrests	217	10,205	2.1%
DWI Arrests Resulting in Convictions	97	4,641	2.1%
DWI Arrests Resulting in Dismissals ²	28	880	3.2%
DWI Arrests Awaiting Disposition	92	4,684	2.0%

¹ These are the number of DWI arrests in 2018 and whether the case resulted in a conviction or dismissal, or is still awaiting court disposition, as reported in the NM MVD Citation Tracking System (CTS) as of July 2019.

² For this table, a very small number of "not guilty" rulings may be included in the category Dismissals.

**Table 26: Average Number of Days from Date of DWI Arrest to Date of Court Disposition
for the State and of Los Lunas Residents Throughout the State, 2018**

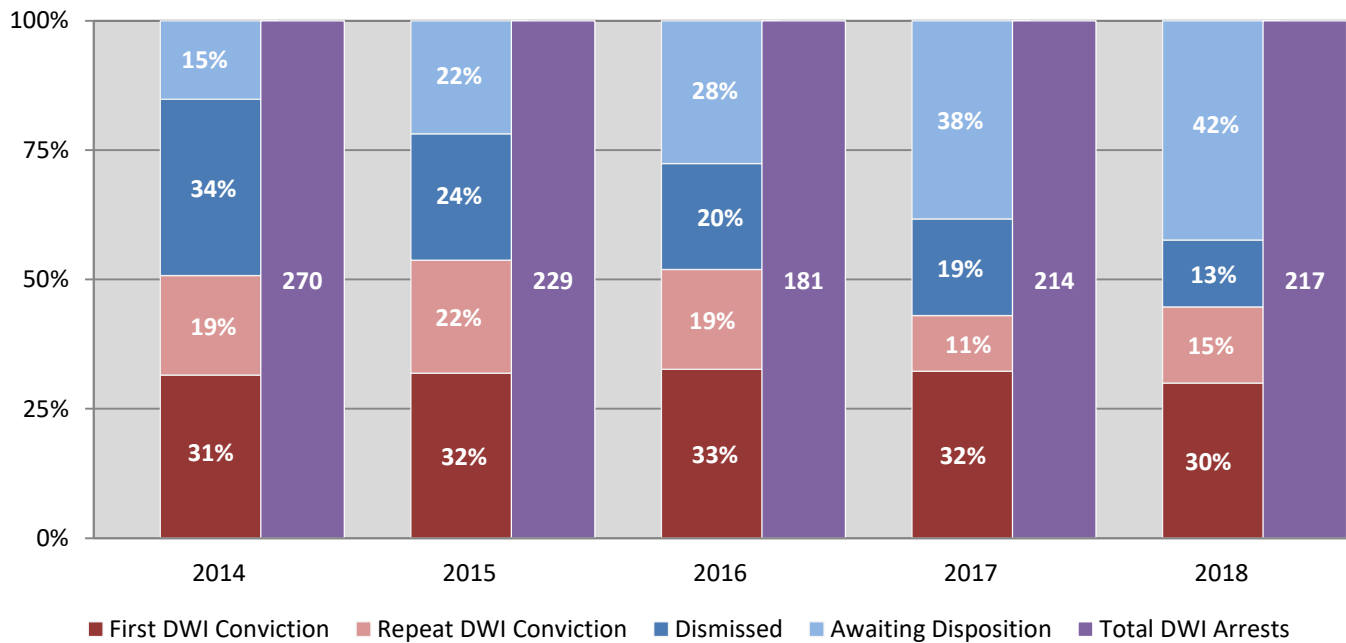
Court Disposition	Average Number of Days		Deviation from Statewide Average
	Los Lunas	Statewide	
DWI Conviction	170	145	25
DWI Dismissal	173	153	20

**Table 27: Court Disposition of DWI Arrests
of Los Lunas Residents Throughout the State, 2014-2018**

Year of DWI Arrest ¹	Court Disposition				Total DWI Arrests
	First DWI Conviction	Repeat DWI Conviction	Dismissed	Awaiting Disposition	
2014	85	52	92	41	270
2015	73	50	56	50	229
2016	59	35	37	50	181
2017	69	23	40	82	214
2018	65	32	28	92	217

¹Values are based upon the year of the arrest.

**Figure 14: Court Dispositions by Percentage of DWI Arrests
of Los Lunas Residents Throughout the State, 2014-2018**



*Table 27 contains the values used to calculate percentages shown in Figure 14.