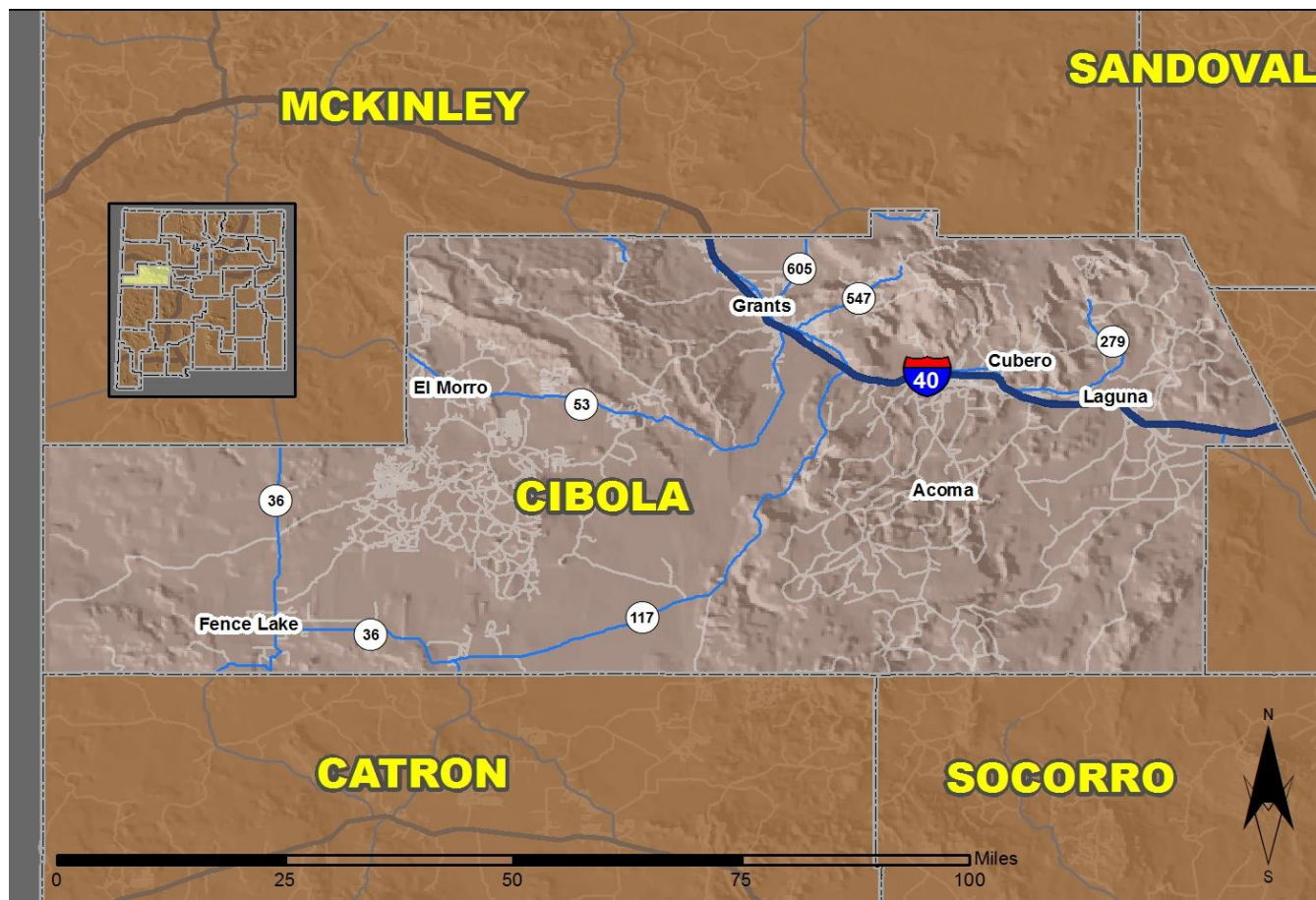


2018 Community Report

Cibola County



Produced for the New Mexico Department of Transportation,
Traffic Safety Division, Traffic Records Bureau,
Under Contract 6093 by the University of New Mexico,
Geospatial and Population Studies, Traffic Research Unit

Distributed in compliance with New Mexico Statute 66-7-214
as a reference source regarding New Mexico traffic crashes

For the purposes of this report, data are compiled by the University of New Mexico, Geospatial and Population Studies, Traffic Research Unit (TRU), on behalf of the New Mexico Department of Transportation (NMDOT). Data in this report may differ from that in other data sources, such as the Federal Fatality Analysis Reporting System (FARS), due to the timing of publications and rules for how data are compiled and maintained in Federal vs. State databases. If you have questions regarding this report, please contact the Traffic Safety Division at 505-827-0427.

<https://gps.unm.edu/tru/crash-reports/community-reports>

Definitions

Aggravated DWI – A driver arrested for 1) driving with a BAC of 0.16 or higher, 2) driving under the influence of alcohol or drugs and causing bodily injury to a human being as a result, or 3) driving under the influence of alcohol or drugs and refusing to submit to a BAC test at the time of arrest for DWI.

Alcohol-involved Crash – A crash for which the Uniform Crash Report indicated that 1) a DWI citation was issued, 2) alcohol was a contributing factor, or 3) a person in control of a vehicle (including a pedestrian or pedalcyclist) was suspected of being under the influence of alcohol.

Alcohol-involved Driver – A person in control of a vehicle who was cited for DWI or indicated on the Uniform Crash Report as being either suspected or determined by testing to be under the influence of alcohol. There can be multiple alcohol-involved drivers in a single alcohol-involved crash.

Crash – A reported incident on a public roadway involving one or more motor vehicles that resulted in death, personal injury, or at least \$500 in property damage. Crashes on private property (such as a parking lot) are not included.

DWI Arrest (Citation) – In this report, a DWI arrest (a.k.a. a DWI citation) is a driver arrested for either DWI or aggravated DWI. New Mexico’s legal limit for presumption of driving while intoxicated (DWI) is 0.08 for non-commercial drivers older than 21 years of age, 0.04 for commercial vehicle drivers, and 0.02 for drivers younger than 21 years of age.

DWI Conviction – A driver convicted of driving under the intoxicating influence of alcohol, narcotics, or pathogenic drugs, including aggravated DWI.

Fatal Crash – A crash in which at least one person was killed. More than one person can be killed in a single fatal crash.

Fatalities – The number of people killed in a crash. The terms “killed” and “deaths” are synonymous with “fatalities.” A fatality is crash-related if it occurs at the time of the crash or if the person(s) involved in the crash dies within 30 days.

Injury Crash – A reported crash in which at least one person was injured. Injury crashes involve at least one suspected serious injury (Class A), suspected minor injury (Class B), or possible injury (Class C). Fatal crashes are not included.

Missing Data – An indication that the applicable field on the UCR form was left blank or contained an invalid code. Starting with crashes that occurred in 2012, improvements in the identification of missing data in the NMDOT crash database led to an increase in the reported amount of missing data.

Pedalcyclist – A person riding a mechanism of transport that is powered solely by pedals (a.k.a. bicyclist).

Pedestrian – A person on foot, walking, running, jogging, hiking, sitting or lying down who is involved in a motor vehicle traffic crash.

Sources

Crash Data – New Mexico Department of Transportation, Traffic Safety Division, Traffic Records Bureau, Traffic Crash Database, as of the report date below. Crash data are compiled using NMDOT Uniform Crash Reports (UCR), submitted by law enforcement agencies in the state, for any incident on a public roadway involving one or more motor vehicles that resulted in death, injury, or at least \$500 in property damage. These reports are processed by the NMDOT Traffic Records Bureau and analyzed by the University of New Mexico, Geospatial and Population Studies, Traffic Research Unit (TRU).

DWI Citation Tracking System (CTS) – New Mexico Taxation and Revenue Department (NM TRD), Motor Vehicle Division (MVD), DWI Citation Tracking System (CTS), as of July 2019. Repeat offenders are identified by the combination of account key, arrest date, and citation number. County data are based upon the county where the arrest took place. City data are based upon the city where the offender resides.

Urban Areas – Areas defined by the New Mexico Department of Transportation, Asset Management and Planning, 2010 U.S. Census Urbanized Area Boundaries, NMDOT-Adjusted, and U.S. Census Urban Clusters, August 21, 2013. Urban areas for crash years 2013-2017 include a 1/2 mile buffer extending out from those urban boundaries. In crashes before 2013, “urban” was defined as a town or city with a population of at least 2,500 people.

**Table 1: Total Crashes and Alcohol-involved Crashes by
Crash Severity in Cibola County, 2009-2018**

Year	Total Crashes				Alcohol-involved Crashes			
	Fatal	Injury	Property Damage Only	Total	Fatal	Injury	Property Damage Only	Total
2009	8	133	361	502	3	26	30	59
2010	8	127	285	420	2	13	11	26
2011	12	118	288	418	5	13	14	32
2012	8	118	298	424	1	20	19	40
2013	12	95	240	347	4	8	10	22
2014	7	97	246	350	1	10	14	25
2015	9	116	287	412	5	17	14	36
2016	14	132	364	510	4	21	20	45
2017	13	107	326	446	5	15	20	40
2018	5	107	318	430	1	16	14	31

**Figure 1: Alcohol-involved Fatal and Injury Crashes Compared with
Non-alcohol-involved Fatal and Injury Crashes in Cibola County, 2009-2018**

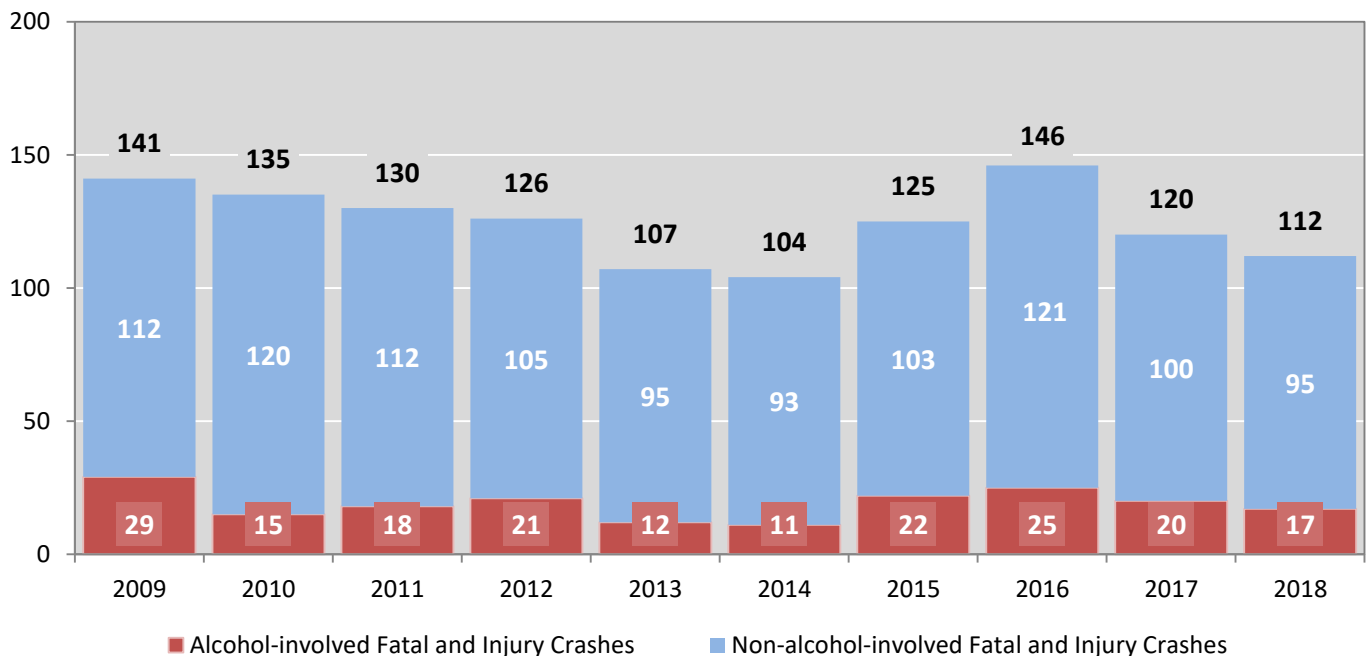


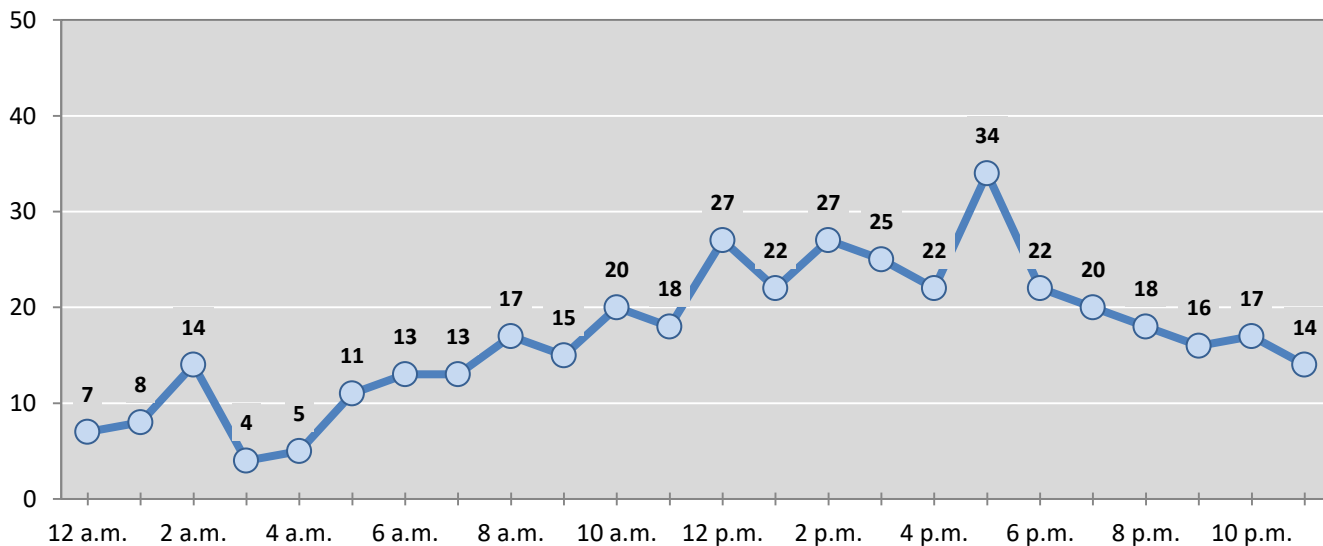
Table 2: Crashes by Month in Cibola County, 2014-2018

Month	Crashes					5-Year Average
	2014	2015	2016	2017	2018	
January	16	34	48	36	32	33
February	31	33	35	27	25	30
March	28	18	41	37	36	32
April	22	22	35	39	35	31
May	35	26	40	37	42	36
June	32	27	49	54	39	40
July	39	44	56	32	28	40
August	23	38	32	41	39	35
September	27	37	52	27	31	35
October	38	46	47	33	40	41
November	33	34	36	34	32	34
December	26	53	39	49	51	44
Total Crashes	350	412	510	446	430	430

Table 3: Alcohol-involved Crashes by Month in Cibola County, 2014-2018

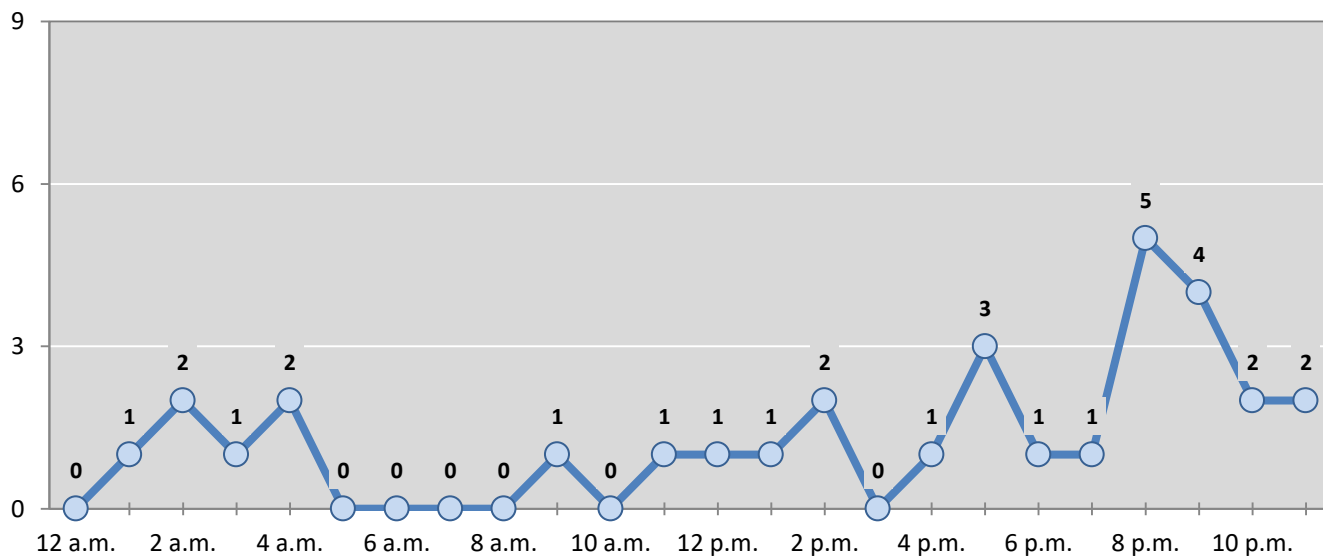
Month	Alcohol-involved Crashes					5-Year Average
	2014	2015	2016	2017	2018	
January	3	3	2	1	2	2
February	1	1	4	1	1	2
March	2	2	2	2	4	2
April	3	4	5	4	2	4
May	2	2	4	3	1	2
June	1	4	3	2	4	3
July	3	4	6	2	1	3
August	0	0	4	5	2	2
September	4	3	6	6	6	5
October	3	8	2	6	5	5
November	2	3	5	5	0	3
December	1	2	2	3	3	2
Total Crashes	25	36	45	40	31	35

Figure 2: Crashes by Hour in Cibola County, 2018



* In 2018, Cibola County had 21 crashes for which hour data were missing.

Figure 3: Alcohol-involved Crashes by Hour in Cibola County, 2018



* In 2018, Cibola County had 0 alcohol-involved crashes for which hour data were missing.

Table 4: Alcohol-involved Crashes by Day of Week in Cibola County, 2014-2018

Day of Week	Alcohol-involved Crashes					5-Year Average
	2014	2015	2016	2017	2018	
Sunday	3	5	7	4	9	6
Monday	5	4	2	3	3	3
Tuesday	3	3	7	7	1	4
Wednesday	3	5	4	4	6	4
Thursday	4	5	3	4	1	3
Friday	3	9	13	5	4	7
Saturday	4	5	9	13	7	8
Total Crashes	25	36	45	40	31	35

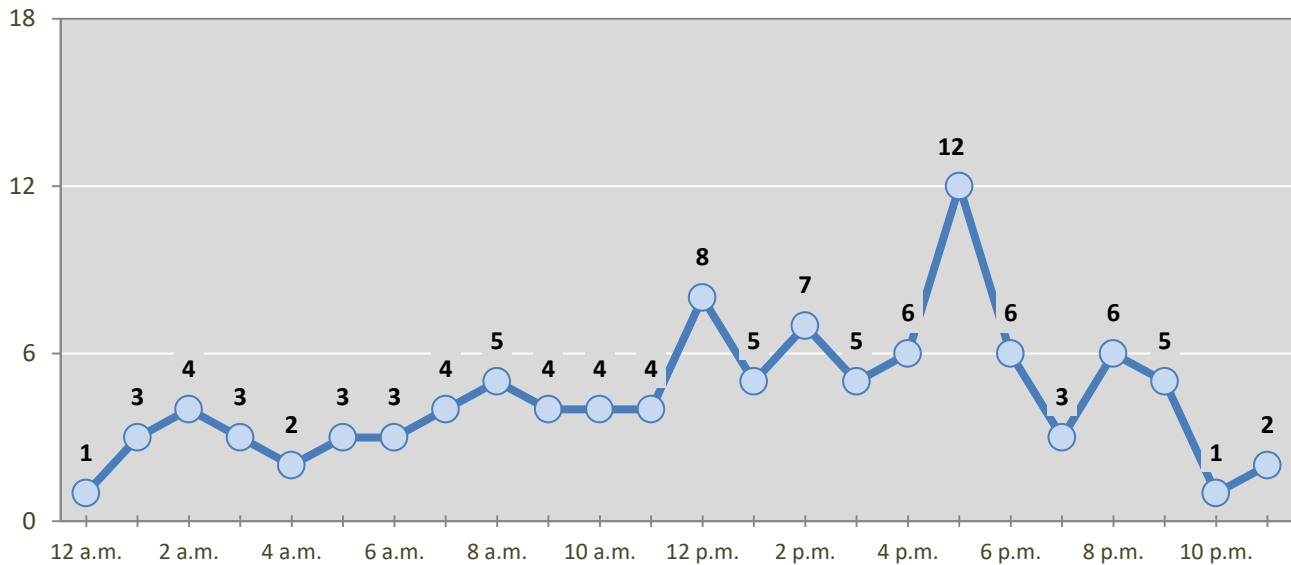
Table 5: Fatal and Injury Crashes by Day of Week in Cibola County, 2014-2018

Day of Week	Fatal and Injury Crashes					5-Year Average
	2014	2015	2016	2017	2018	
Sunday	8	11	27	22	17	17
Monday	19	10	13	14	20	15
Tuesday	8	18	17	15	12	14
Wednesday	20	18	24	16	13	18
Thursday	11	18	16	12	15	14
Friday	19	30	30	22	17	24
Saturday	19	20	19	19	18	19
Total Crashes	104	125	146	120	112	121

Table 6: Pedestrian and Pedalcyclist Crashes by Day of Week in Cibola County, 2014-2018

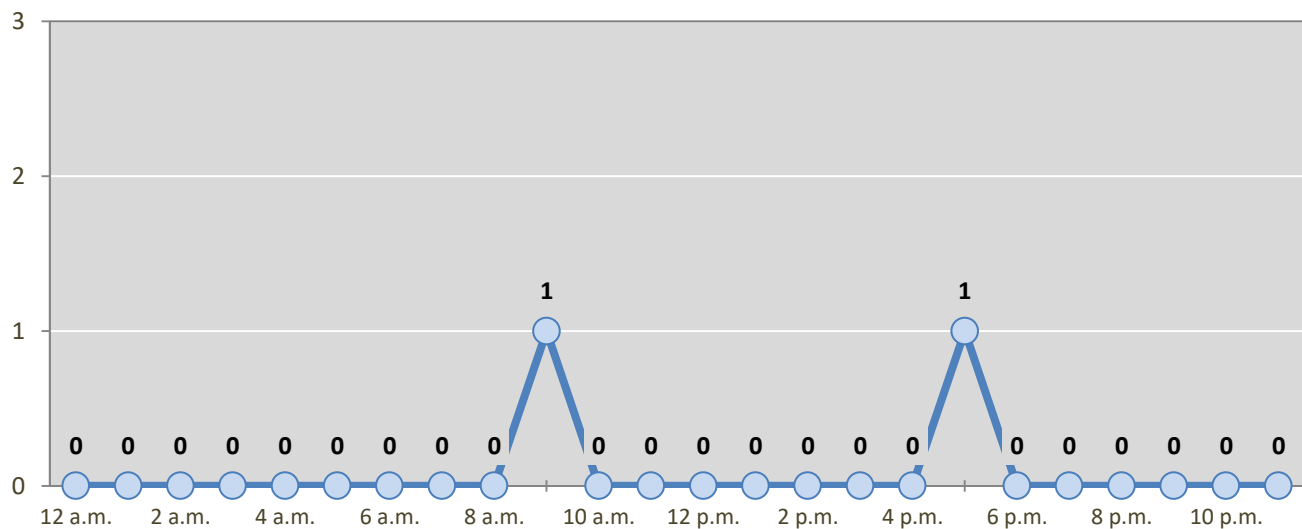
Day of Week	Pedestrian and Pedalcyclist Crashes					5-Year Average
	2014	2015	2016	2017	2018	
Sunday	0	0	1	0	0	0
Monday	2	0	0	0	1	1
Tuesday	0	1	1	1	1	1
Wednesday	0	0	4	0	0	1
Thursday	0	0	1	0	0	0
Friday	0	2	0	0	0	0
Saturday	0	1	0	1	0	0
Total Crashes	2	4	7	2	2	3

Figure 4: Fatal and Injury Crashes by Hour in Cibola County, 2018



* In 2018, Cibola County had 6 crashes for which hour data were missing.

Figure 5: Pedestrian and Pedalcyclist Crashes by Hour in Cibola County, 2018



* In 2018, Cibola County had 0 crashes for which hour data were missing.

Table 7: Severity of Injuries to People in Crashes by Rural and Urban Location in Cibola County, 2018

Urban and Rural Locations by Alcohol-involvement	People in Crashes by Severity of Injuries					Total People
	Fatalities (Class K)	Suspected Serious Injuries (Class A)	Suspected Minor Injuries (Class B)	Possible Injuries (Class C)	No Apparent Injuries (Class O)	
People in Alcohol-involved Crashes	1	2	11	11	43	68
Urban	0	0	0	0	5	5
Rural Non-Interstate	1	1	5	6	20	33
Rural Interstate	0	1	6	5	18	30
People in Crashes	6	13	59	91	828	997
Urban	0	1	8	21	238	268
Rural Non-Interstate	3	8	20	36	251	318
Rural Interstate	3	4	31	34	339	411
Percent in Alcohol-involved Crashes	17%	15%	19%	12%	5%	7%

Table 8: Total Crashes by Roadway System and Crash Severity in Cibola County, 2014-2018

Crash Severity by System	Crashes by Year					5-Year Average
	2014	2015	2016	2017	2018	
Total Rural Interstate	91	128	156	175	176	145
Fatal Crash	6	4	7	7	3	5
Injury Crash	32	39	46	44	45	41
Property Damage Only Crash	53	85	103	124	128	99
Total Rural Non-Interstate	103	99	191	129	153	135
Fatal Crash	0	4	5	5	2	3
Injury Crash	28	32	51	41	42	39
Property Damage Only Crash	75	63	135	83	109	93
Total Urban	156	185	163	142	101	150
Fatal Crash	1	1	2	1	0	1
Injury Crash	37	45	35	22	20	32
Property Damage Only Crash	118	139	126	119	81	117

Table 9: Total Crashes by Crash Classification in Cibola County, 2014-2018

Crash Classification	Total Crashes by Year					5-Year Average
	2014	2015	2016	2017	2018	
Animal	26	23	61	42	48	40
Fixed Object	50	72	100	89	62	75
Other (Non-Collision)	11	18	25	25	27	21
Other (Object)	15	22	14	25	24	20
Other Vehicle	161	183	202	192	201	188
Overturn/Rollover	47	23	54	48	40	42
Parked Vehicle	27	19	21	10	13	18
Pedalcyclist	0	1	2	0	2	1
Pedestrian	1	3	5	2	1	2
Railroad Train	1	0	0	0	1	0
Rollover	0	39	20	7	5	14
Vehicle on Other Road	6	3	3	4	4	4
Missing Data	5	6	3	2	2	4
Total Crashes	350	412	510	446	430	430

Table 10: Vehicles in Crashes by Vehicle Type in Cibola County, 2014-2018

Vehicle Type ¹	Vehicles in Crashes by Vehicle Type					5-Year Average
	2014	2015	2016	2017	2018	
Bus	2	1	2	1	1	1
Motorcycle	15	15	17	18	6	14
Passenger	184	238	301	275	277	255
Pedalcyclist	0	1	2	0	2	1
Pedestrian	2	3	5	2	1	3
Pickup	116	150	166	137	139	142
Semi	58	69	79	104	84	79
Van/SUV/4WD	93	101	147	112	109	112
Other Vehicle	2	19	2	1	8	6
Missing Data	82	45	52	23	31	47
Total Vehicles	554	642	773	673	658	660

¹ Pedestrians and pedalcyclists are counted as non-motorized vehicles, when involved in a crash with a motor vehicle. See Page 17 for data on drivers of non-motorized vehicles in crashes (i.e. pedestrians and pedalcyclists).

Table 11: Motor Vehicle Drivers in Crashes by Vehicle Type and Age Group in Cibola County, 2018

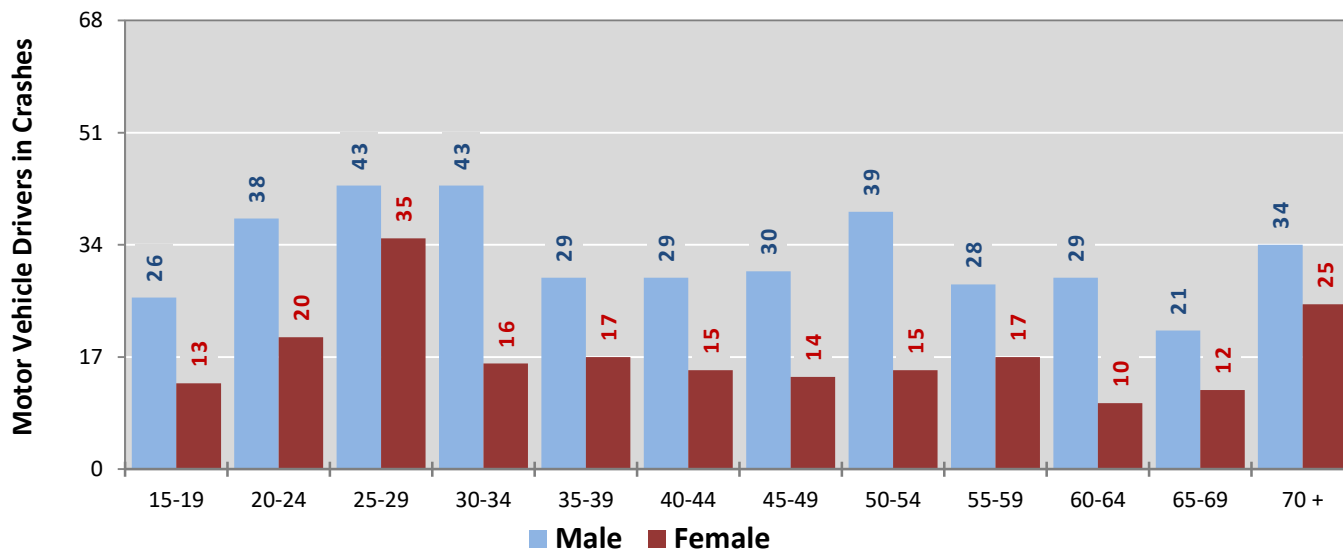
Age Groups	Motor Vehicle ¹ Drivers by Vehicle Type and Age Group								Total Drivers
	Bus	Motor-cycle	Passenger	Pickup	Semi	Van 4WD SUV	Other Vehicle	Missing Data	
15-19	0	0	22	10	0	6	0	1	39
20-24	0	0	32	14	4	8	0	0	58
25-29	0	0	43	9	7	18	1	0	78
30-34	1	2	28	10	10	6	0	2	59
35-39	0	0	23	11	7	5	0	0	46
40-44	0	0	16	11	8	9	0	0	44
45-49	0	1	17	6	8	11	0	1	44
50-54	0	1	17	13	12	9	0	2	54
55-59	0	0	19	8	10	6	0	2	45
60-64	0	0	13	11	10	3	1	1	39
65-69	0	0	11	6	2	8	3	3	33
70 +	0	1	21	19	0	13	3	2	59
Missing Data	0	1	15	11	6	7	0	17	57
Total Drivers	1	6	277	139	84	109	8	31	655

Table 12: Alcohol-involved Motor Vehicle Drivers in Crashes by Vehicle Type and Age Group in Cibola County, 2018

Age Groups	Alcohol-involved Motor Vehicle ¹ Drivers by Vehicle Type and Age Group								Total Drivers
	Bus	Motor-cycle	Passenger	Pickup	Semi	Van 4WD SUV	Other Vehicle	Missing Data	
15-19	0	0	0	1	0	0	0	0	1
20-24	0	0	4	1	0	0	0	0	5
25-29	0	0	6	0	0	2	0	0	8
30-34	0	0	3	1	0	0	0	0	4
35-39	0	0	1	1	0	0	0	0	2
40-44	0	0	3	1	0	0	0	0	4
45-49	0	0	1	0	0	2	0	0	3
50-54	0	0	1	0	0	0	0	0	1
55-59	0	0	1	0	0	0	0	0	1
60-64	0	0	0	1	0	0	0	0	1
65-69	0	0	1	0	0	0	0	0	1
70 +	0	0	0	0	0	0	0	0	0
Missing Data	0	0	0	0	0	0	0	0	0
Total Drivers	0	0	21	6	0	4	0	0	31

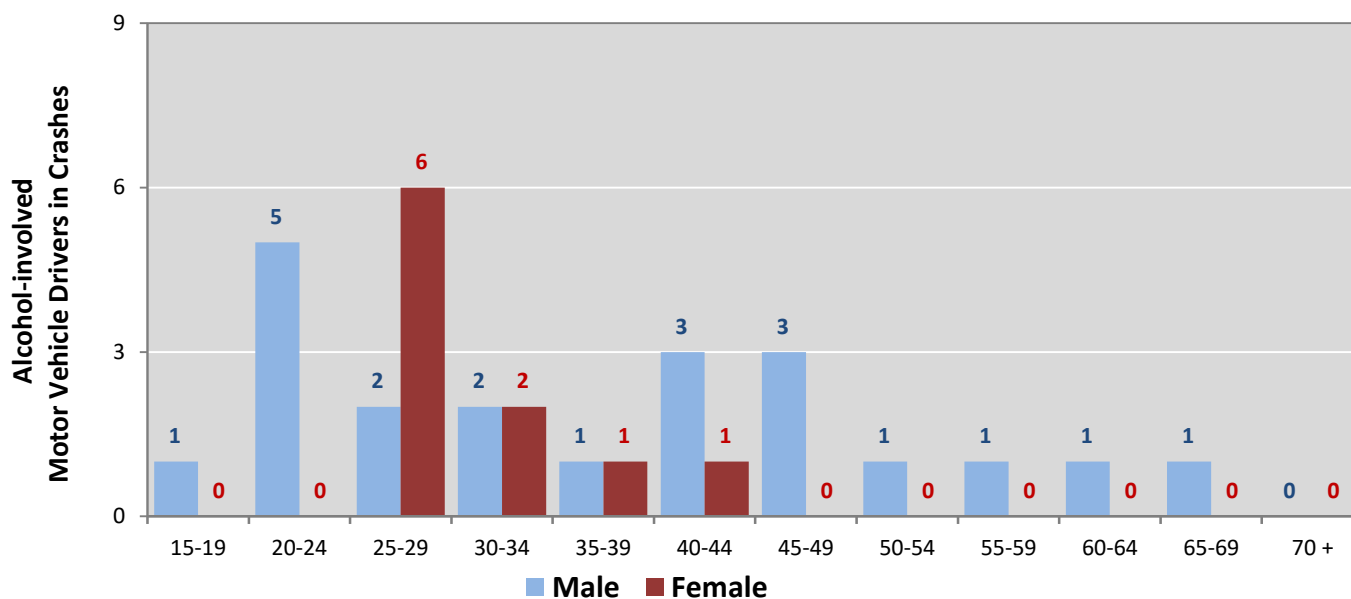
¹ See Page 17 for data on drivers of non-motorized vehicles in crashes (i.e. pedestrians and pedalcyclists).

Figure 6: Motor Vehicle Drivers in Crashes by Age Group and Sex in Cibola County, 2018



* In 2018, Cibola County had 57 drivers in crashes for which age or sex data were missing.

Figure 7: Alcohol-involved Motor Vehicle Drivers in Crashes by Age Group and Sex in Cibola County, 2018



* In 2018, Cibola County had 0 drivers in crashes for which age or sex data were missing.

Table 13: Alcohol-involved Motor Vehicle Drivers Under 21 (Ages 15-20) in Crashes in Cibola County, 2014-2018

Age ¹	Year					5-Year Total
	2014	2015	2016	2017	2018	
15	0	0	0	0	0	0
16	1	0	1	0	0	2
17	0	1	0	0	0	1
18	0	1	1	1	1	4
19	0	3	1	0	0	4
20	1	0	2	0	1	4
Total Drivers	2	5	5	1	2	15

Table 14: Motor Vehicle Drivers Under 21 (Ages 15-20) in Crashes by Age, Sex and Alcohol-involvement in Cibola County, 2018

Age ¹	Total Drivers				Alcohol-involved Drivers			
	Sex		Total Drivers	Percent of Total	Sex		Total Drivers	Percent of Total
	Male	Female			Male	Female		
15	3	0	3	5%	0	0	0	0%
16	5	4	9	16%	0	0	0	0%
17	6	4	10	18%	0	0	0	0%
18	8	2	10	18%	1	0	1	50%
19	4	3	7	13%	0	0	0	0%
20	12	4	16	29%	1	0	1	50%
Total Drivers	38	17	55	100%	2	0	2	100%

¹ For analysis of drivers under age 21, when the driver age or sex are not identified on the crash report (typically hit-and-run drivers), the driver data are considered unreliable and are excluded from the analysis.

**Table 15: Frequency of Contributing Factors in Crashes
by Crash Severity in Cibola County, 2018**

Contributing Factors	Frequency of Contributing Factor ¹ by Crash Severity			
	Frequency in Fatal Crashes	Frequency in Injury Crashes	Frequency in Property Damage Only Crashes	Frequency in All Crashes
Human	13	166	370	549
Driver Inattention	3	53	110	166
Other Improper Driving	0	25	37	62
Excessive Speed	3	16	27	46
Speed Too Fast for Conditions	0	13	31	44
Failed to Yield Right of Way	0	12	28	40
Alcohol Involved	1	16	14	31
Made Improper Turn	1	4	22	27
Following Too Closely	1	4	15	20
Drove Left Of Center	0	6	12	18
Avoid No Contact - Other	0	4	13	17
Improper Overtaking	1	2	14	17
Improper Backing	0	2	14	16
Improper Lane Change	0	2	13	15
Avoid No Contact - Vehicle	0	1	11	12
Drug Involved	3	0	3	6
Passed Stop Sign	0	0	4	4
Disregarded Traffic Signal	0	2	1	3
Failed to Yield to Police Vehicle	0	1	1	2
Vehicle Skidded Before Brake	0	2	0	2
High Speed Pursuit	0	1	0	1
Cell Phone	0	0	0	0
Driverless Moving Vehicle	0	0	0	0
Failed to Yield to Emergency Vehicle	0	0	0	0
Pedestrian Error	0	0	0	0
Texting	0	0	0	0
Vehicle	1	5	15	21
Other Mechanical Defect	1	2	6	9
Defective Tires	0	3	4	7
Inadequate Brakes	0	0	3	3
Defective Steering	0	0	2	2
Environment	0	1	1	2
Low Visibility Due to Smoke	0	1	0	1
Road Defect	0	0	1	1
Traffic Control Not Functioning	0	0	0	0
Other	0	67	243	310
None	0	40	124	164
Other - No Driver Error	0	27	119	146

¹ Multiple contributing factors may be reported for any vehicle in a crash.

Table 16: People in Crashes by Crash Classification and Severity of Injuries in Cibola County, 2018

Crash Classification	People in Crashes by Severity of Injuries					Total People
	Fatalities (Class K)	Suspected Serious Injuries (Class A)	Suspected Minor Injuries (Class B)	Possible Injuries (Class C)	No Apparent Injuries (Class O)	
Animal	0	0	1	2	96	99
Fixed Object	3	2	12	12	66	95
Other (Non-Collision)	0	0	3	3	37	43
Other (Object)	0	0	0	2	50	52
Other Vehicle	1	7	17	56	498	579
Overturn/Rollover	2	3	19	9	35	68
Parked Vehicle	0	0	0	0	28	28
Pedalcyclist	0	0	3	0	2	5
Pedestrian	0	1	0	0	3	4
Railroad Train	0	0	1	0	0	1
Rollover	0	0	2	6	2	10
Vehicle on Other Road	0	0	1	1	8	10
Missing Data	0	0	0	0	3	3
Total People	6	13	59	91	828	997

**Table 17: Killed or Injured Unbelted People in Crashes
by Sex and Age Group in Cibola County, 2018**

Age Groups	Unbelted People Killed or Injured ^{1,2}				Total People
	Male	Percent of Male	Female	Percent of Female	
0-4	1	13%	0	0%	1
5-9	2	25%	0	0%	2
10-14	0	0%	0	0%	0
15-19	0	0%	1	17%	1
20-24	2	25%	0	0%	2
25-29	0	0%	2	33%	2
30-34	1	13%	3	50%	4
35-39	1	13%	0	0%	1
40-44	0	0%	0	0%	0
45-49	1	13%	0	0%	1
50-54	0	0%	0	0%	0
55-59	0	0%	0	0%	0
60-64	0	0%	0	0%	0
65-69	0	0%	0	0%	0
70 +	0	0%	0	0%	0
Missing Data	0	0%	0	0%	0
Total People	8	100%	6	100%	14

¹ People injured are in one of three categories: suspected serious injury, suspected minor injury, or possible injury.

² Excludes people in or on buses, heavy trucks, motorcycles, or ATVs.

Figure 8: Seatbelt Use by People in Crashes with Fatal or Suspected Serious Injuries in Cibola County, 2014-2018

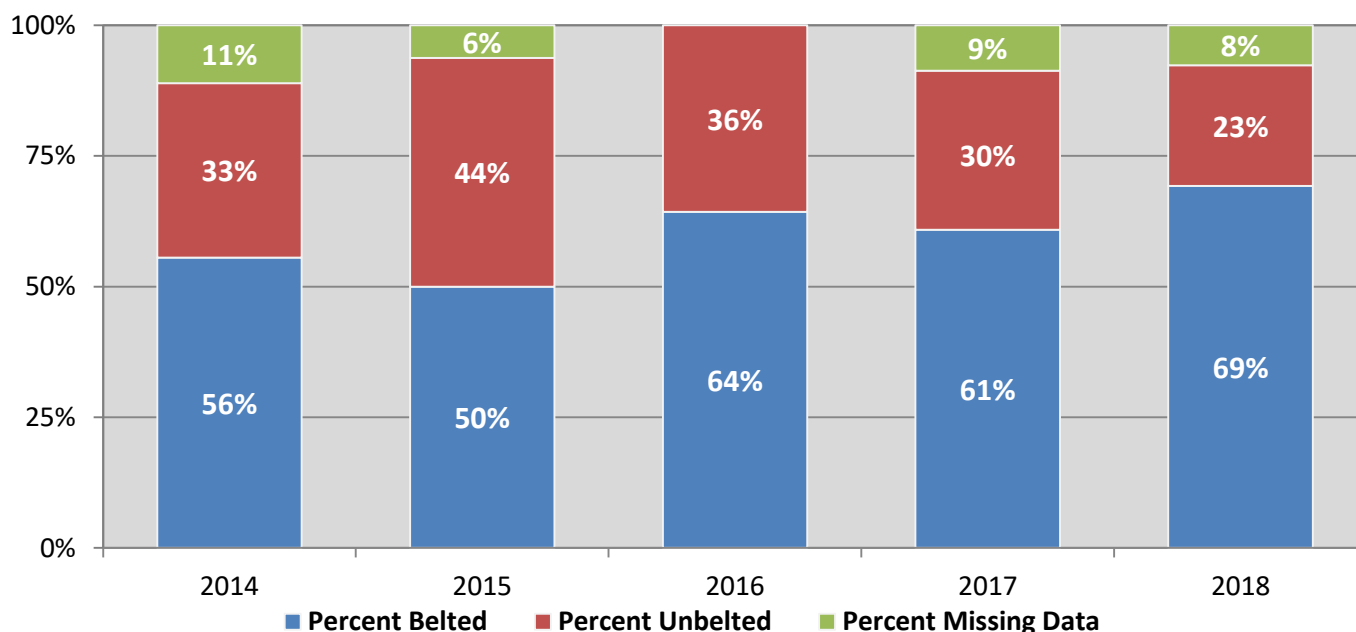
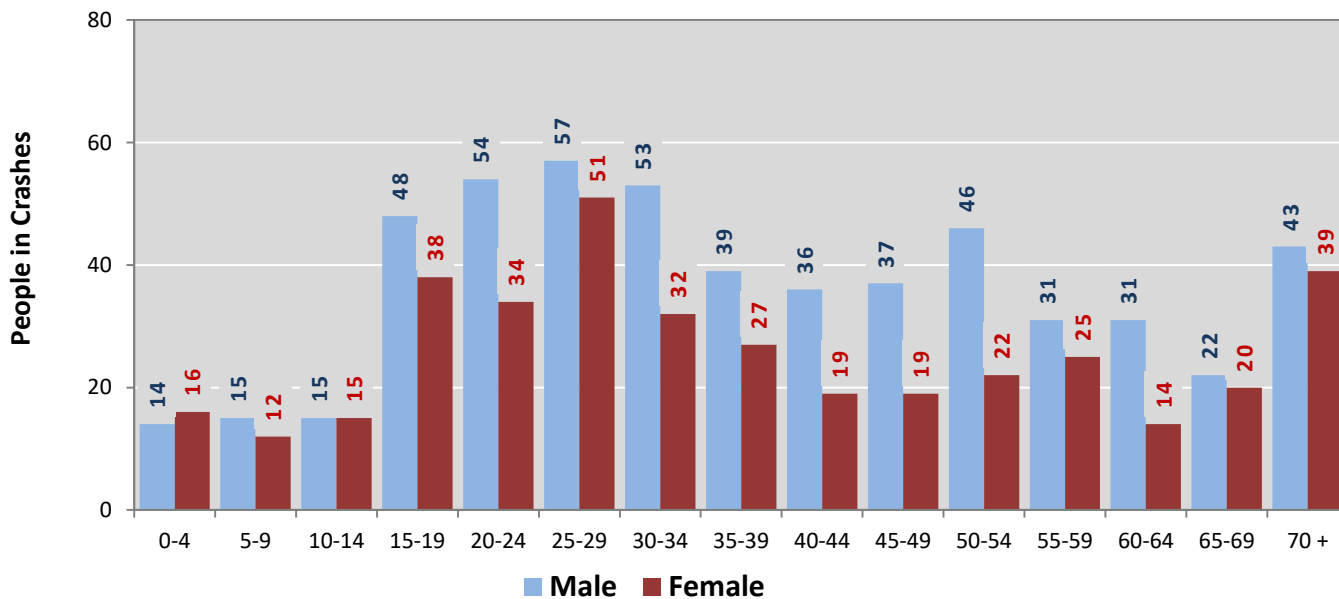
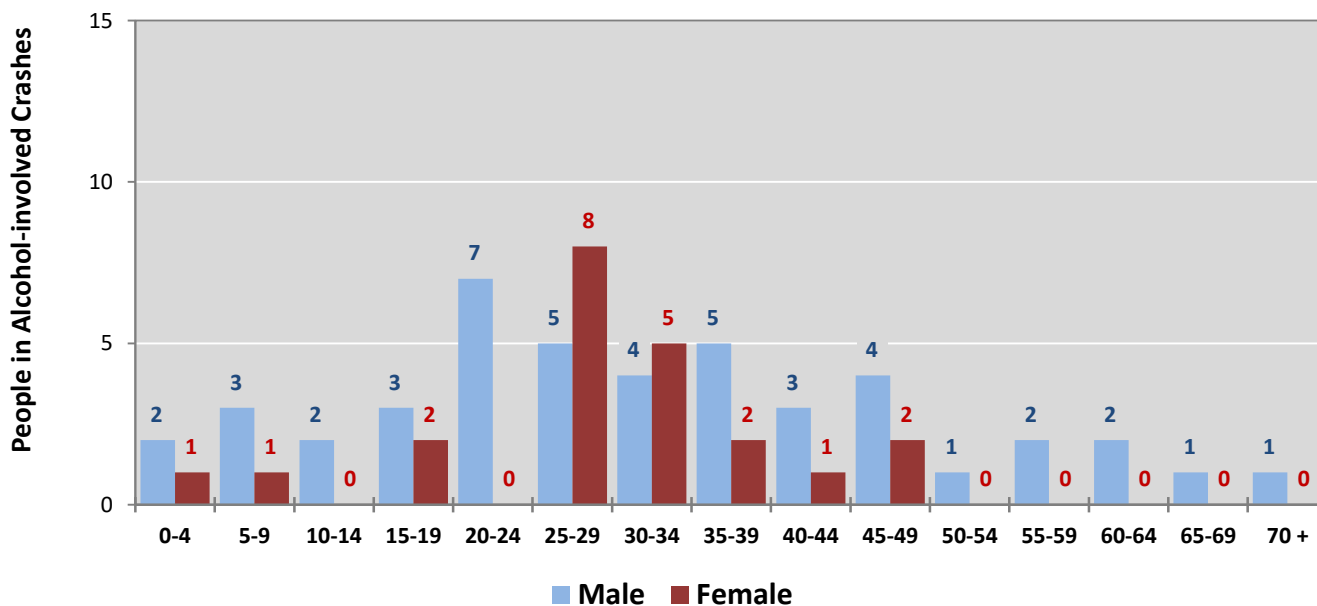


Figure 9: People in Crashes by Age Group and Sex in Cibola County, 2018



* In 2018, Cibola County had 73 people in crashes for which age or sex data were missing.

Figure 10: People in Alcohol-involved Crashes by Age Group and Sex in Cibola County, 2018



* In 2018, Cibola County had 1 people in alcohol-involved crashes for which age or sex data were missing.

**Table 18: Pedestrians and Pedalcyclists in Crashes by Age Group in
Cibola County, 2014-2018**

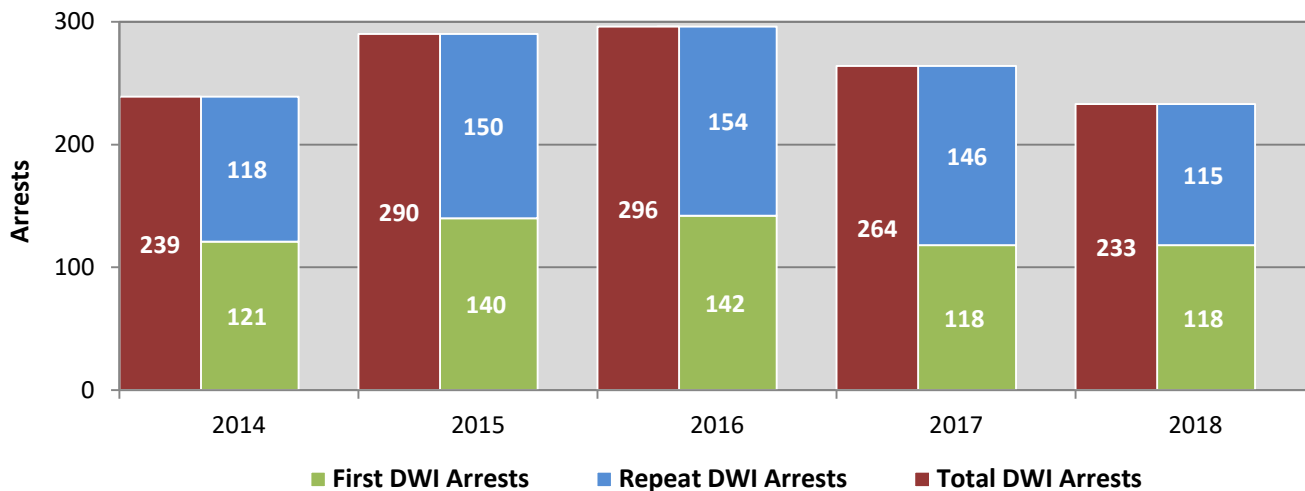
Age Groups	Pedestrians and Pedalcyclists ¹ in Crashes					5-Year Total People
	2014	2015	2016	2017	2018	
0-4	0	0	0	0	0	0
5-9	0	0	0	0	0	0
10-14	0	0	2	0	2	4
15-19	0	0	0	0	0	0
20-24	0	0	0	0	0	0
25-29	0	1	1	0	0	2
30-34	0	0	1	1	0	2
35-39	1	0	1	0	0	2
40-44	1	0	0	0	0	1
45-49	0	0	0	0	0	0
50-54	0	0	2	0	1	3
55-59	0	1	0	0	0	1
60-64	0	1	0	0	0	1
65-69	0	1	0	0	0	1
70 +	0	0	0	0	0	0
Missing Data	0	0	0	1	0	1
Total People	2	4	7	2	3	18

**Table 19: Pedestrians and Pedalcyclists in Crashes by Alcohol Involvement
and Severity of Injuries in Cibola County, 2018**

Alcohol Involvement	Pedestrians and Pedalcyclists ¹ in Crashes					Total People
	Fatalities (Class K)	Suspected Serious Injuries (Class A)	Suspected Minor Injuries (Class B)	Possible Injuries (Class C)	No Apparent Injury (Class O)	
Total Pedalcyclists	0	0	2	0	0	2
Involved	0	0	0	0	0	0
Not Involved	0	0	2	0	0	2
Total Pedestrians	0	1	0	0	0	1
Involved	0	0	0	0	0	0
Not Involved	0	1	0	0	0	1
Total People	0	1	2	0	0	3

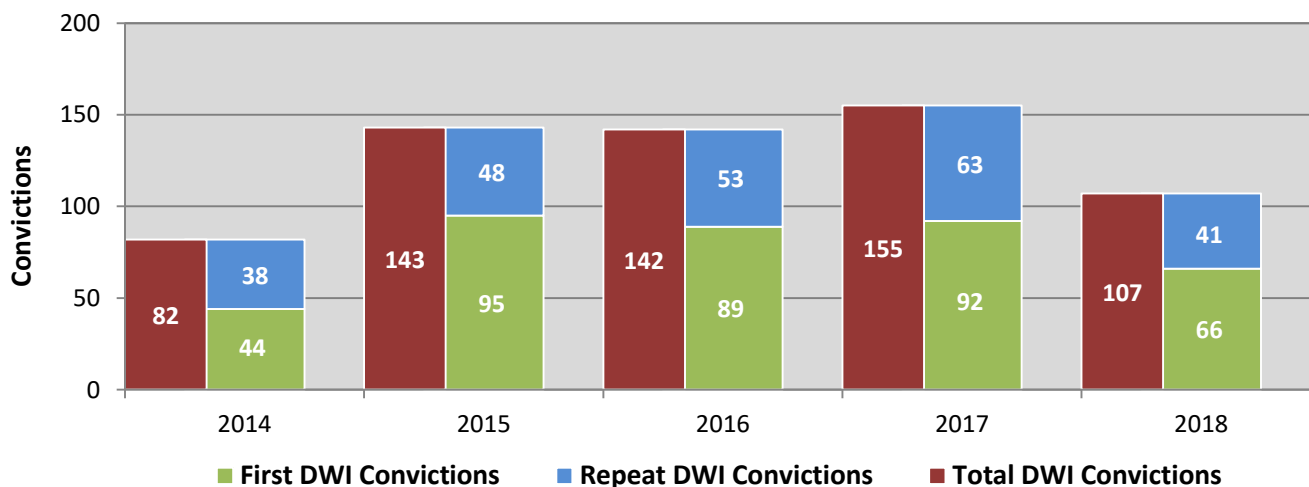
¹ Pedestrians and pedalcyclists are counted as non-motorized vehicles, when involved in a crash with a motor vehicle.

**Figure 11: DWI Arrests in Cibola County,
Showing First and Repeat DWI Arrests, 2014-2018**



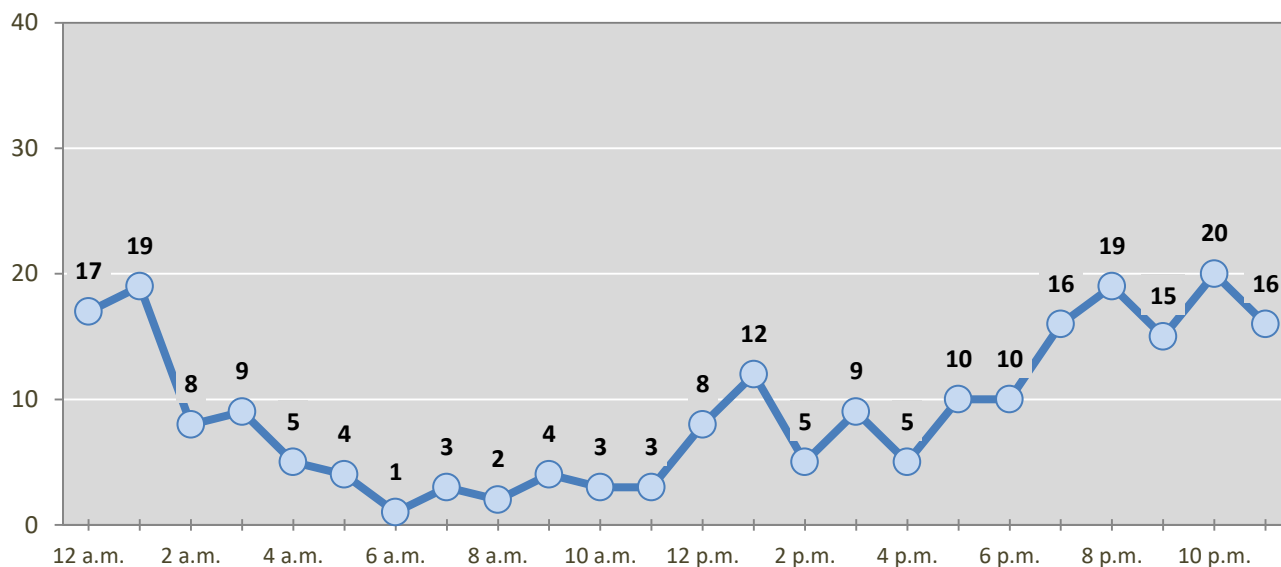
*Values are based upon the year of the arrest.

**Figure 12: DWI Convictions in Cibola County,
Showing First and Repeat DWI Convictions, 2014-2018**



*Values are based upon the year of the conviction.

Figure 13: DWI Arrests by Hour in Cibola County, 2018



* In 2018, Cibola County had 10 arrests for which hour data were missing.

Table 20: DWI Arrests by Day of Week in Cibola County, 2014-2018

Day of Week	Year					5-Year Average
	2014	2015	2016	2017	2018	
Sunday	47	52	46	37	34	43
Monday	22	28	30	38	23	28
Tuesday	23	20	30	32	29	27
Wednesday	25	29	40	37	27	32
Thursday	33	38	42	21	25	32
Friday	39	52	44	33	38	41
Saturday	50	71	64	66	57	62
Total Arrests	239	290	296	264	233	264

Table 21: Driver First DWI Arrests by Age Group in Cibola County, 2014-2018

Age Groups	Driver First DWI Arrests ¹				
	2014	2015	2016	2017	2018
15-19	10	13	4	3	4
20-24	27	33	34	27	17
25-29	30	25	32	36	32
30-34	15	18	20	14	17
35-39	16	14	17	16	9
40-44	10	13	11	7	14
45-49	3	10	5	4	10
50-54	6	8	15	2	4
55-59	2	2	3	3	8
60-64	1	1	0	2	2
65-69	0	3	1	3	1
70 +	1	0	0	1	0
Missing Data	0	0	0	0	0
Total Drivers	121	140	142	118	118

¹ Values are based upon the year of the arrest.

Table 22: Driver Repeat DWI Arrests by Age Group in Cibola County, 2014-2018

Age Groups	Driver Repeat DWI Arrests ¹				
	2014	2015	2016	2017	2018
15-19	2	2	0	0	0
20-24	10	9	16	4	6
25-29	16	28	20	28	16
30-34	21	21	22	30	31
35-39	22	29	27	24	17
40-44	12	13	22	18	17
45-49	15	16	16	14	8
50-54	8	21	16	15	8
55-59	7	6	6	8	2
60-64	2	4	6	4	8
65-69	3	1	3	1	1
70 +	0	0	0	0	1
Missing Data	0	0	0	0	0
Total Drivers	118	150	154	146	115

¹ Values are based upon the year of the arrest.

Table 23: Driver First DWI Convictions by Age Group in Cibola County, 2014-2018

Age Groups	Driver First DWI Convictions ¹				
	2014	2015	2016	2017	2018
15-19	1	7	5	1	1
20-24	15	28	28	19	14
25-29	8	21	17	25	16
30-34	7	13	10	14	12
35-39	6	7	9	13	7
40-44	2	4	7	6	4
45-49	1	7	3	5	5
50-54	2	5	8	7	1
55-59	1	3	0	1	2
60-64	1	0	1	0	1
65-69	0	0	1	1	3
70 +	0	0	0	0	0
Missing Data	0	0	0	0	0
Total Drivers	44	95	89	92	66

¹Values are based upon the year of the conviction.

Table 24: Driver Repeat DWI Convictions by Age Group in Cibola County, 2014-2018

Age Groups	Driver Repeat DWI Convictions ¹				
	2014	2015	2016	2017	2018
15-19	0	1	0	0	0
20-24	3	1	2	5	2
25-29	7	6	7	13	11
30-34	3	6	5	8	8
35-39	4	12	13	8	5
40-44	9	4	7	9	7
45-49	3	6	6	9	1
50-54	7	5	8	7	5
55-59	1	4	2	2	1
60-64	0	1	3	1	1
65-69	1	2	0	1	0
70 +	0	0	0	0	0
Missing Data	0	0	0	0	0
Total Drivers	38	48	53	63	41

¹Values are based upon the year of the conviction.

Table 25: Court Disposition of DWI Arrests for Cibola County and the State, 2018

Court Disposition of DWI Arrest ¹	Cibola County	Statewide	Percent of Statewide
Total DWI Arrests	233	10,205	2.3%
DWI Arrests Resulting in Convictions	66	4,641	1.4%
DWI Arrests Resulting in Dismissals ²	4	880	0.5%
DWI Arrests Awaiting Disposition	163	4,684	3.5%

¹ These are the number of DWI arrests in 2018 and whether the case resulted in a conviction or dismissal, or is still awaiting court disposition, as reported in the NM MVD Citation Tracking System (CTS) as of July 2019.

² For this table, a very small number of "not guilty" rulings may be included in the category Dismissals.

Table 26: Average Number of Days from Date of DWI Arrest to Date of Court Disposition in Cibola County and the State, 2018

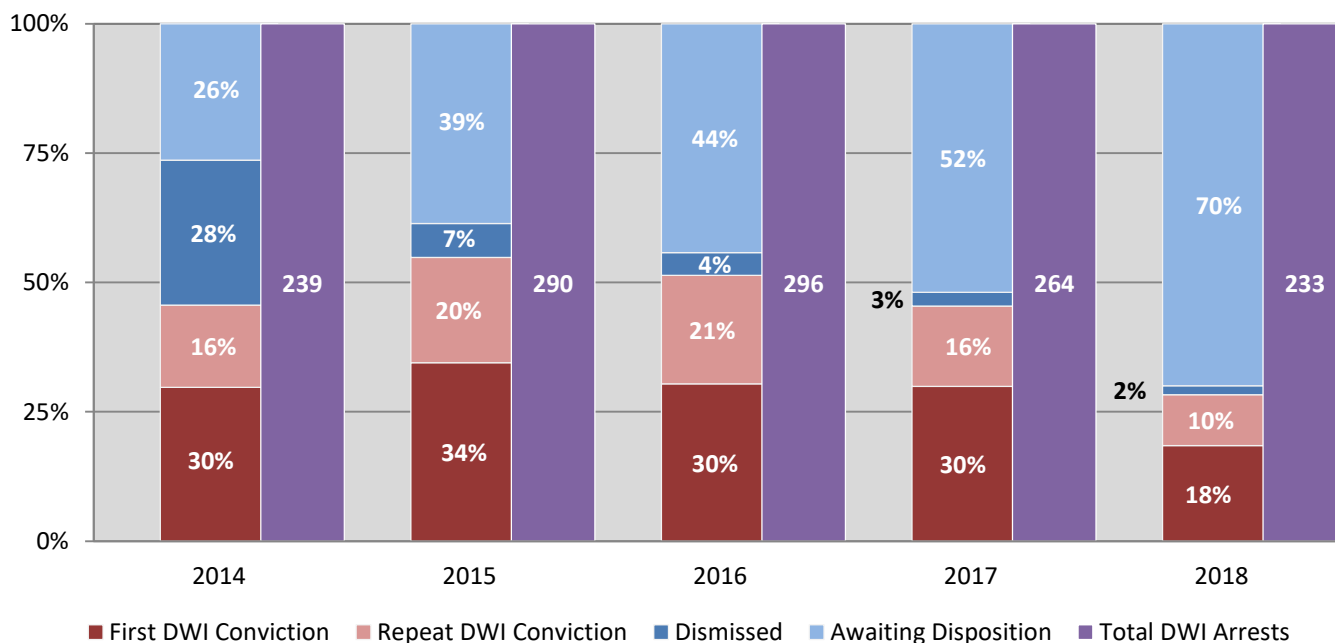
Court Disposition	Average Number of Days		Deviation from Statewide Average
	Cibola County	Statewide	
DWI Conviction	173	145	28
DWI Dismissal	172	153	19

Table 27: Court Disposition of DWI Arrests in Cibola County, 2014-2018

Year of DWI Arrest ¹	Court Disposition				Total DWI Arrests
	First DWI Conviction	Repeat DWI Conviction	Dismissed	Awaiting Disposition	
2014	71	38	67	63	239
2015	100	59	19	112	290
2016	90	62	13	131	296
2017	79	41	7	137	264
2018	43	23	4	163	233

¹ Values are based upon the year of the arrest.

Figure 14: Court Dispositions by Percentage of DWI Arrests in Cibola County, 2014-2018



*Table 27 contains the values used to calculate percentages shown in Figure 14.