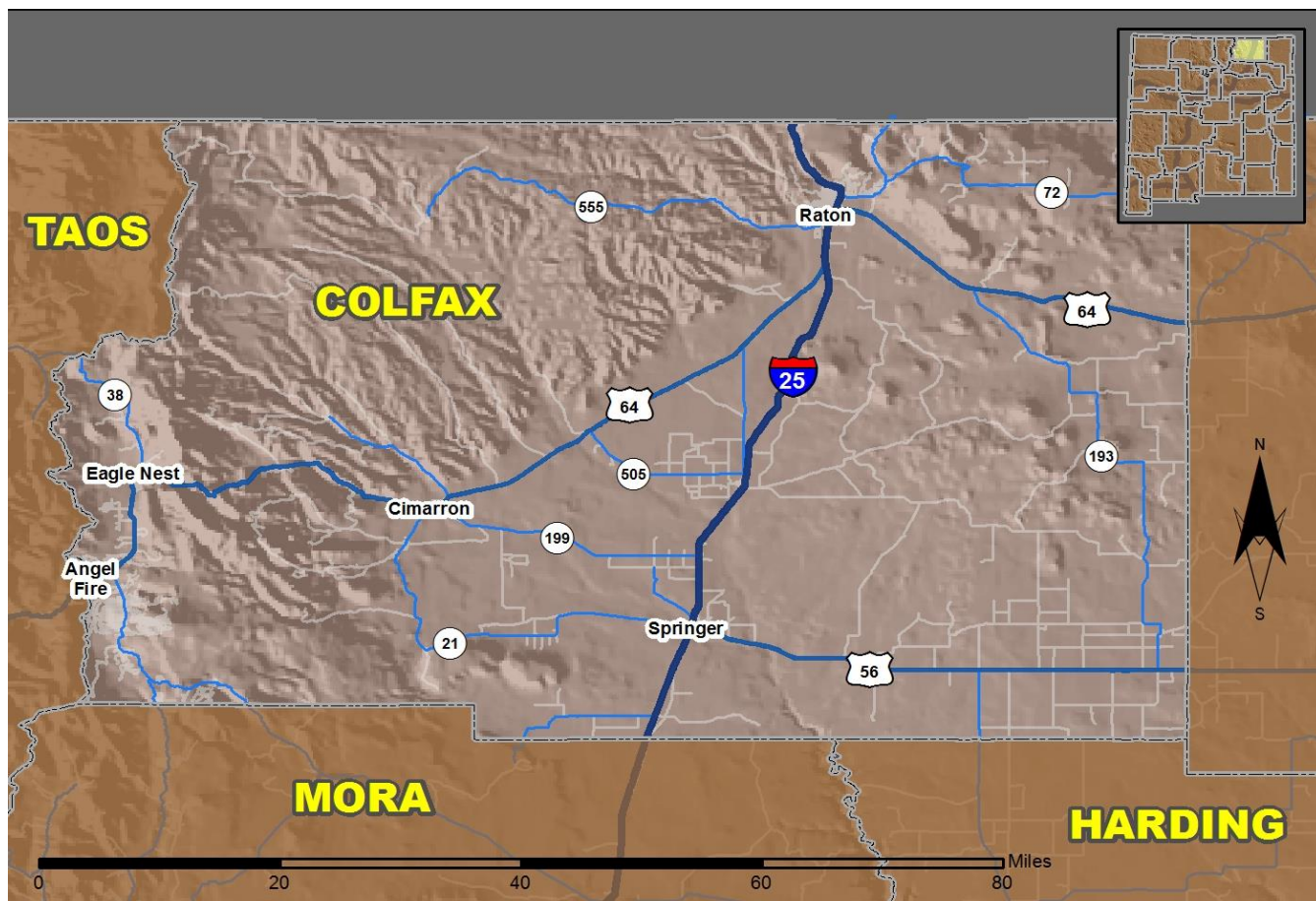


2018 Community Report

Colfax County



Produced for the New Mexico Department of Transportation,
Traffic Safety Division, Traffic Records Bureau,
Under Contract 6093 by the University of New Mexico,
Geospatial and Population Studies, Traffic Research Unit

Distributed in compliance with New Mexico Statute 66-7-214
as a reference source regarding New Mexico traffic crashes

For the purposes of this report, data are compiled by the University of New Mexico, Geospatial and Population Studies, Traffic Research Unit (TRU), on behalf of the New Mexico Department of Transportation (NMDOT). Data in this report may differ from that in other data sources, such as the Federal Fatality Analysis Reporting System (FARS), due to the timing of publications and rules for how data are compiled and maintained in Federal vs. State databases. If you have questions regarding this report, please contact the Traffic Safety Division at 505-827-0427.

<https://gps.unm.edu/tru/crash-reports/community-reports>

Definitions

Aggravated DWI – A driver arrested for 1) driving with a BAC of 0.16 or higher, 2) driving under the influence of alcohol or drugs and causing bodily injury to a human being as a result, or 3) driving under the influence of alcohol or drugs and refusing to submit to a BAC test at the time of arrest for DWI.

Alcohol-involved Crash – A crash for which the Uniform Crash Report indicated that 1) a DWI citation was issued, 2) alcohol was a contributing factor, or 3) a person in control of a vehicle (including a pedestrian or pedalcyclist) was suspected of being under the influence of alcohol.

Alcohol-involved Driver – A person in control of a vehicle who was cited for DWI or indicated on the Uniform Crash Report as being either suspected or determined by testing to be under the influence of alcohol. There can be multiple alcohol-involved drivers in a single alcohol-involved crash.

Crash – A reported incident on a public roadway involving one or more motor vehicles that resulted in death, personal injury, or at least \$500 in property damage. Crashes on private property (such as a parking lot) are not included.

DWI Arrest (Citation) – In this report, a DWI arrest (a.k.a. a DWI citation) is a driver arrested for either DWI or aggravated DWI. New Mexico’s legal limit for presumption of driving while intoxicated (DWI) is 0.08 for non-commercial drivers older than 21 years of age, 0.04 for commercial vehicle drivers, and 0.02 for drivers younger than 21 years of age.

DWI Conviction – A driver convicted of driving under the intoxicating influence of alcohol, narcotics, or pathogenic drugs, including aggravated DWI.

Fatal Crash – A crash in which at least one person was killed. More than one person can be killed in a single fatal crash.

Fatalities – The number of people killed in a crash. The terms “killed” and “deaths” are synonymous with “fatalities.” A fatality is crash-related if it occurs at the time of the crash or if the person(s) involved in the crash dies within 30 days.

Injury Crash – A reported crash in which at least one person was injured. Injury crashes involve at least one suspected serious injury (Class A), suspected minor injury (Class B), or possible injury (Class C). Fatal crashes are not included.

Missing Data – An indication that the applicable field on the UCR form was left blank or contained an invalid code. Starting with crashes that occurred in 2012, improvements in the identification of missing data in the NMDOT crash database led to an increase in the reported amount of missing data.

Pedalcyclist – A person riding a mechanism of transport that is powered solely by pedals (a.k.a. bicyclist).

Pedestrian – A person on foot, walking, running, jogging, hiking, sitting or lying down who is involved in a motor vehicle traffic crash.

Sources

Crash Data – New Mexico Department of Transportation, Traffic Safety Division, Traffic Records Bureau, Traffic Crash Database, as of the report date below. Crash data are compiled using NMDOT Uniform Crash Reports (UCR), submitted by law enforcement agencies in the state, for any incident on a public roadway involving one or more motor vehicles that resulted in death, injury, or at least \$500 in property damage. These reports are processed by the NMDOT Traffic Records Bureau and analyzed by the University of New Mexico, Geospatial and Population Studies, Traffic Research Unit (TRU).

DWI Citation Tracking System (CTS) – New Mexico Taxation and Revenue Department (NM TRD), Motor Vehicle Division (MVD), DWI Citation Tracking System (CTS), as of July 2019. Repeat offenders are identified by the combination of account key, arrest date, and citation number. County data are based upon the county where the arrest took place. City data are based upon the city where the offender resides.

Urban Areas – Areas defined by the New Mexico Department of Transportation, Asset Management and Planning, 2010 U.S. Census Urbanized Area Boundaries, NMDOT-Adjusted, and U.S. Census Urban Clusters, August 21, 2013. Urban areas for crash years 2013-2017 include a 1/2 mile buffer extending out from those urban boundaries. In crashes before 2013, “urban” was defined as a town or city with a population of at least 2,500 people.

**Table 1: Total Crashes and Alcohol-involved Crashes by
Crash Severity in Colfax County, 2009-2018**

Year	Total Crashes				Alcohol-involved Crashes			
	Fatal	Injury	Property Damage Only	Total	Fatal	Injury	Property Damage Only	Total
2009	3	84	264	351	0	7	9	16
2010	4	93	282	379	1	10	9	20
2011	4	88	278	370	0	9	10	19
2012	4	73	228	305	1	10	6	17
2013	7	75	234	316	2	7	5	14
2014	6	59	242	307	2	4	6	12
2015	4	57	223	284	2	5	10	17
2016	5	73	251	329	0	9	12	21
2017	4	66	268	338	0	4	4	8
2018	4	83	283	370	3	4	7	14

**Figure 1: Alcohol-involved Fatal and Injury Crashes Compared with
Non-alcohol-involved Fatal and Injury Crashes in Colfax County, 2009-2018**

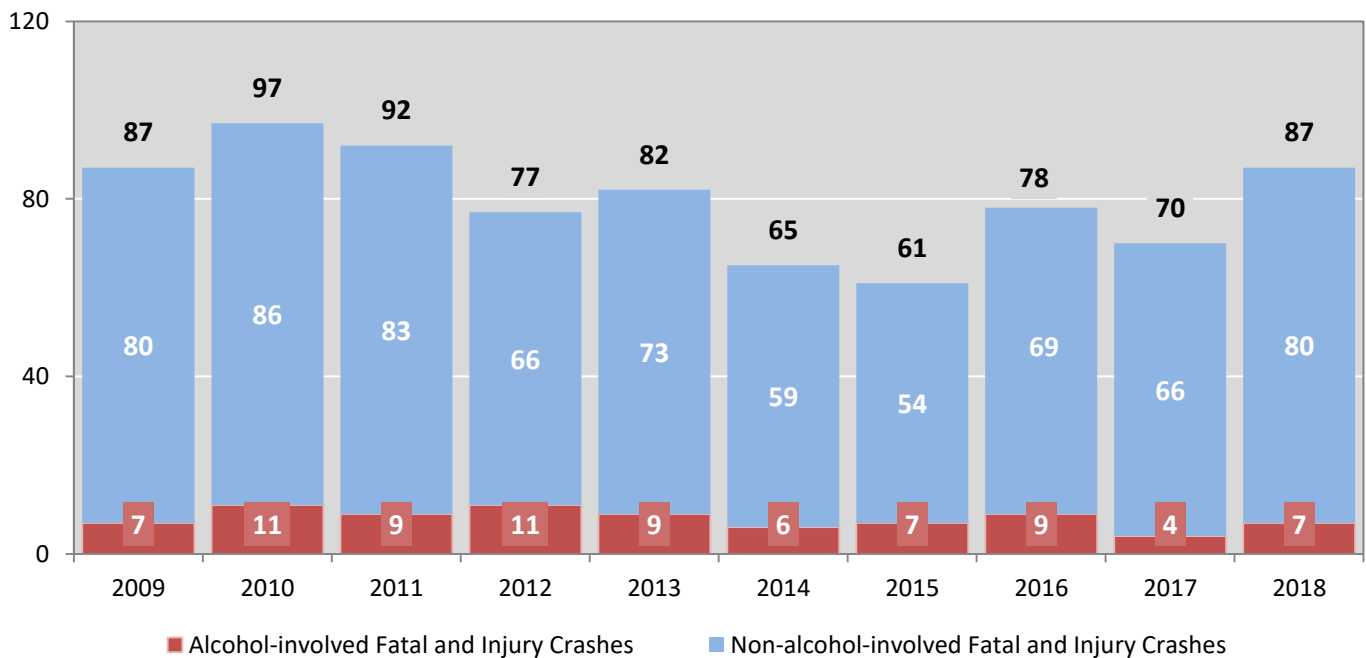


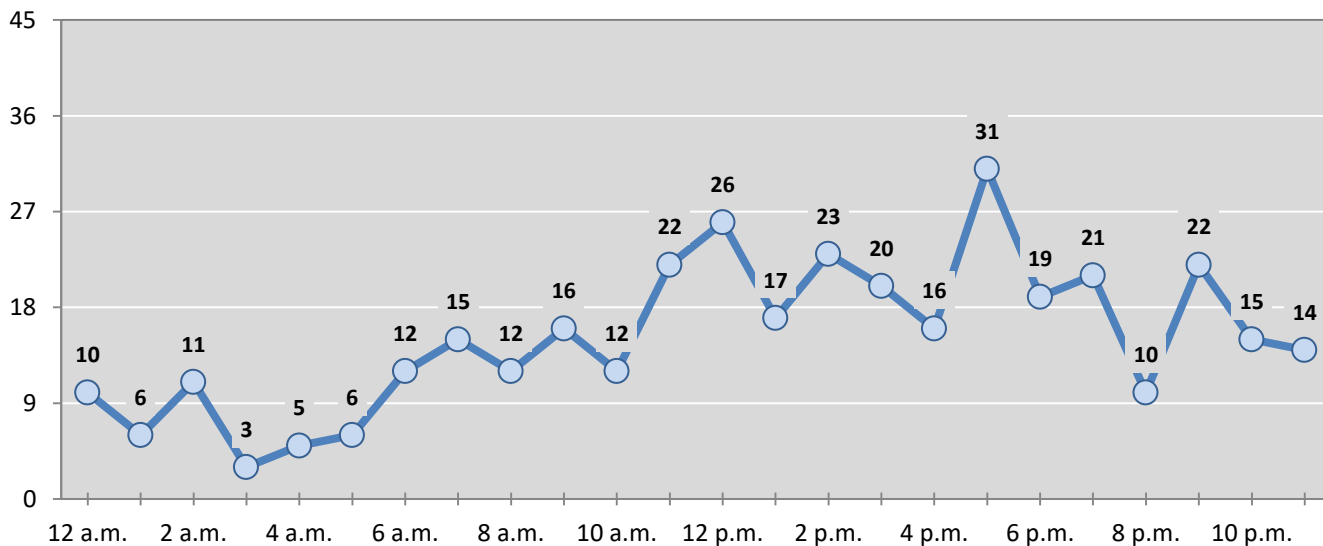
Table 2: Crashes by Month in Colfax County, 2014-2018

Month	Crashes					5-Year Average
	2014	2015	2016	2017	2018	
January	31	42	34	31	19	31
February	19	30	22	12	18	20
March	14	15	22	22	19	18
April	17	18	13	18	30	19
May	25	22	39	29	33	30
June	37	22	35	40	37	34
July	28	32	28	42	26	31
August	28	20	29	29	37	29
September	22	21	25	24	37	26
October	22	22	31	31	29	27
November	21	22	17	27	44	26
December	43	18	34	33	41	34
Total Crashes	307	284	329	338	370	326

Table 3: Alcohol-involved Crashes by Month in Colfax County, 2014-2018

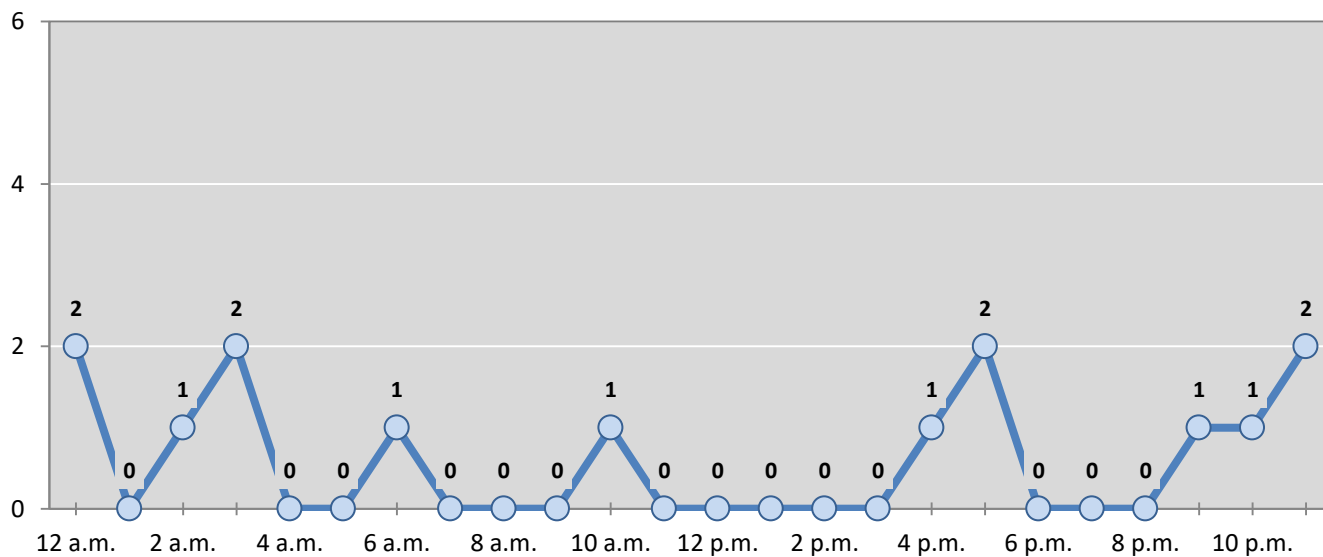
Month	Alcohol-involved Crashes					5-Year Average
	2014	2015	2016	2017	2018	
January	0	2	1	0	2	1
February	1	1	1	0	1	1
March	2	2	2	0	2	2
April	0	1	4	0	1	1
May	1	4	3	0	0	2
June	0	1	1	1	1	1
July	0	3	0	3	0	1
August	3	0	4	1	2	2
September	1	0	1	1	0	1
October	2	2	1	2	2	2
November	1	1	1	0	3	1
December	1	0	2	0	0	1
Total Crashes	12	17	21	8	14	14

Figure 2: Crashes by Hour in Colfax County, 2018



* In 2018, Colfax County had 6 crashes for which hour data were missing.

Figure 3: Alcohol-involved Crashes by Hour in Colfax County, 2018



* In 2018, Colfax County had 0 alcohol-involved crashes for which hour data were missing.

Table 4: Alcohol-involved Crashes by Day of Week in Colfax County, 2014-2018

Day of Week	Alcohol-involved Crashes					5-Year Average
	2014	2015	2016	2017	2018	
Sunday	2	2	2	0	2	2
Monday	0	1	2	2	1	1
Tuesday	0	2	2	2	4	2
Wednesday	3	0	3	0	3	2
Thursday	2	3	3	0	1	2
Friday	3	4	6	2	1	3
Saturday	2	5	3	2	2	3
Total Crashes	12	17	21	8	14	14

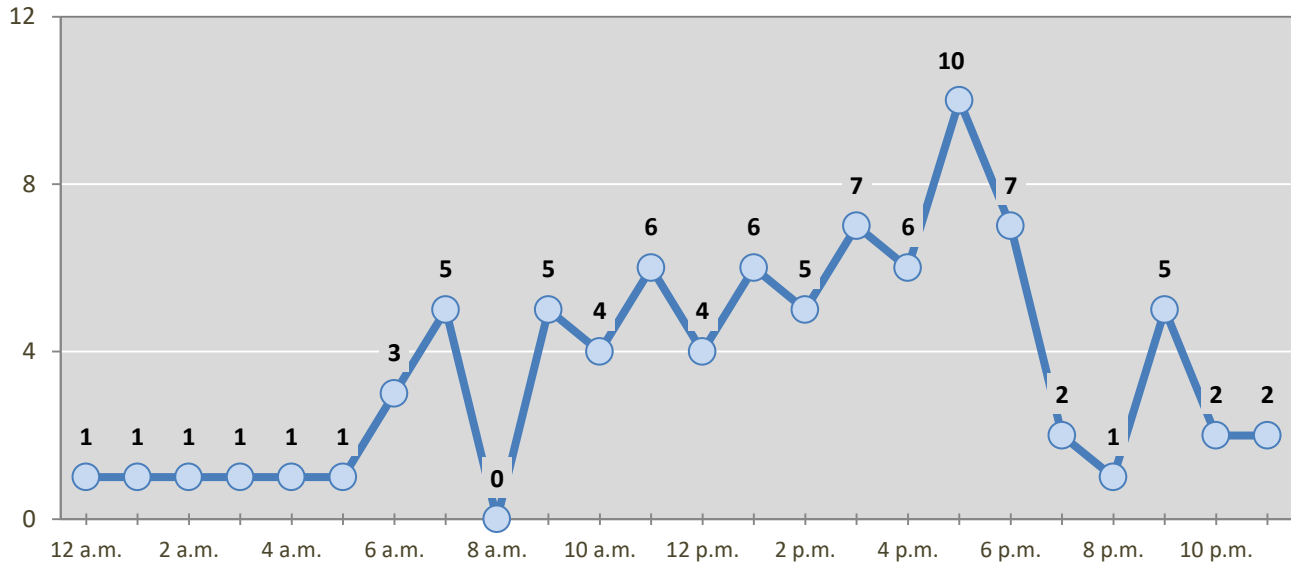
Table 5: Fatal and Injury Crashes by Day of Week in Colfax County, 2014-2018

Day of Week	Fatal and Injury Crashes					5-Year Average
	2014	2015	2016	2017	2018	
Sunday	7	9	13	11	12	10
Monday	12	9	12	8	12	11
Tuesday	7	8	5	11	15	9
Wednesday	9	5	10	8	18	10
Thursday	7	9	11	8	10	9
Friday	16	12	16	8	11	13
Saturday	7	9	11	16	9	10
Total Crashes	65	61	78	70	87	72

Table 6: Pedestrian and Pedalcyclist Crashes by Day of Week in Colfax County, 2014-2018

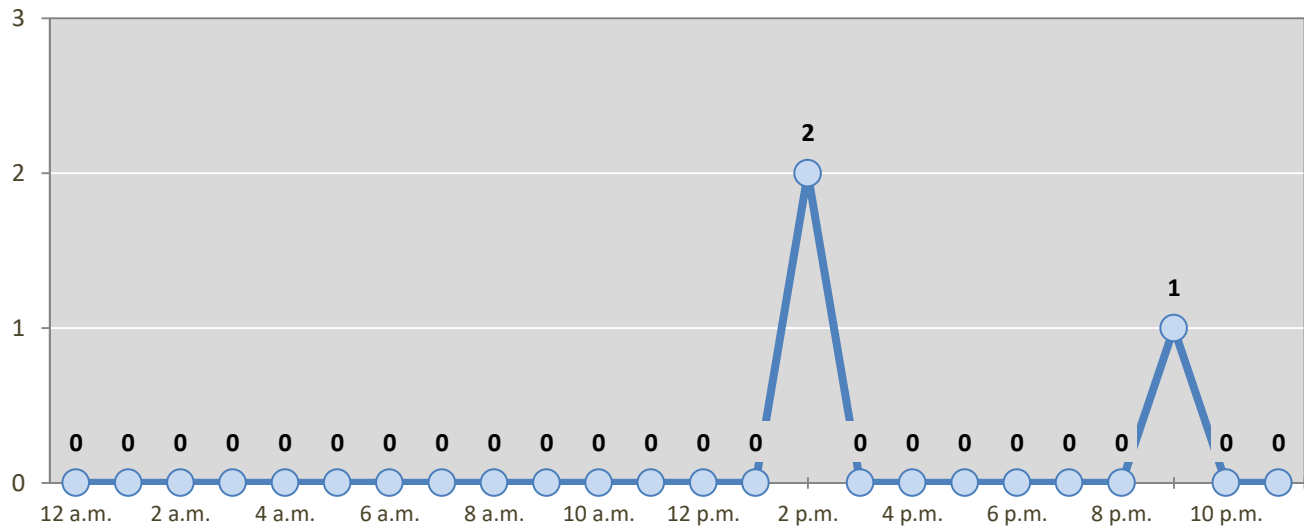
Day of Week	Pedestrian and Pedalcyclist Crashes					5-Year Average
	2014	2015	2016	2017	2018	
Sunday	0	0	0	1	1	0
Monday	0	0	0	1	0	0
Tuesday	1	0	2	0	0	1
Wednesday	0	1	0	1	2	1
Thursday	0	0	0	0	0	0
Friday	0	1	1	0	0	0
Saturday	0	1	0	0	0	0
Total Crashes	1	3	3	3	3	3

Figure 4: Fatal and Injury Crashes by Hour in Colfax County, 2018



* In 2018, Colfax County had 1 crashes for which hour data were missing.

Figure 5: Pedestrian and Pedalcyclist Crashes by Hour in Colfax County, 2018



* In 2018, Colfax County had 0 crashes for which hour data were missing.

Table 7: Severity of Injuries to People in Crashes by Rural and Urban Location in Colfax County, 2018

Urban and Rural Locations by Alcohol-involvement	People in Crashes by Severity of Injuries					Total People
	Fatalities (Class K)	Suspected Serious Injuries (Class A)	Suspected Minor Injuries (Class B)	Possible Injuries (Class C)	No Apparent Injuries (Class O)	
People in Alcohol-involved Crashes	4	0	3	1	30	38
Urban	0	0	1	0	11	12
Rural Non-Interstate	2	0	2	1	6	11
Rural Interstate	2	0	0	0	13	15
People in Crashes	5	17	45	61	630	758
Urban	0	1	5	10	195	211
Rural Non-Interstate	3	8	25	32	247	315
Rural Interstate	2	8	15	19	188	232
Percent in Alcohol-involved Crashes	80%	0%	7%	2%	5%	5%

Table 8: Total Crashes by Roadway System and Crash Severity in Colfax County, 2014-2018

Crash Severity by System	Crashes by Year					5-Year Average
	2014	2015	2016	2017	2018	
Total Rural Interstate	69	70	63	88	97	77
Fatal Crash	2	2	2	2	1	2
Injury Crash	20	21	16	17	23	19
Property Damage Only Crash	47	47	45	69	73	56
Total Rural Non-Interstate	126	95	151	136	177	137
Fatal Crash	3	1	3	1	3	2
Injury Crash	24	17	33	28	46	30
Property Damage Only Crash	99	77	115	107	128	105
Total Urban	112	119	115	114	96	112
Fatal Crash	1	1	0	1	0	1
Injury Crash	15	19	24	21	14	19
Property Damage Only Crash	96	99	91	92	82	92

Table 9: Total Crashes by Crash Classification in Colfax County, 2014-2018

Crash Classification	Total Crashes by Year					5-Year Average
	2014	2015	2016	2017	2018	
Animal	93	84	88	111	113	98
Fixed Object	47	41	67	73	72	60
Other (Non-Collision)	8	11	10	1	10	8
Other (Object)	14	11	11	14	16	13
Other Vehicle	74	73	83	89	87	81
Overturn/Rollover	44	12	34	29	40	32
Parked Vehicle	22	23	21	11	20	19
Pedalcyclist	0	0	0	1	2	1
Pedestrian	1	3	3	2	1	2
Railroad Train	0	0	0	0	0	0
Rollover	0	22	10	7	6	9
Vehicle on Other Road	0	2	2	0	1	1
Missing Data	4	2	0	0	2	2
Total Crashes	307	284	329	338	370	326

Table 10: Vehicles in Crashes by Vehicle Type in Colfax County, 2014-2018

Vehicle Type ¹	Vehicles in Crashes by Vehicle Type					5-Year Average
	2014	2015	2016	2017	2018	
Bus	4	0	0	1	0	1
Motorcycle	10	9	17	7	15	12
Passenger	128	147	167	179	194	163
Pedalcyclist	0	0	0	1	2	1
Pedestrian	1	3	3	2	2	2
Pickup	87	100	109	108	114	104
Semi	27	17	27	33	29	27
Van/SUV/4WD	98	86	115	98	106	101
Other Vehicle	6	13	5	9	23	11
Missing Data	51	25	6	10	10	20
Total Vehicles	412	400	449	448	495	441

¹ Pedestrians and pedalcyclists are counted as non-motorized vehicles, when involved in a crash with a motor vehicle. See Page 17 for data on drivers of non-motorized vehicles in crashes (i.e. pedestrians and pedalcyclists).

Table 11: Motor Vehicle Drivers in Crashes by Vehicle Type and Age Group in Colfax County, 2018

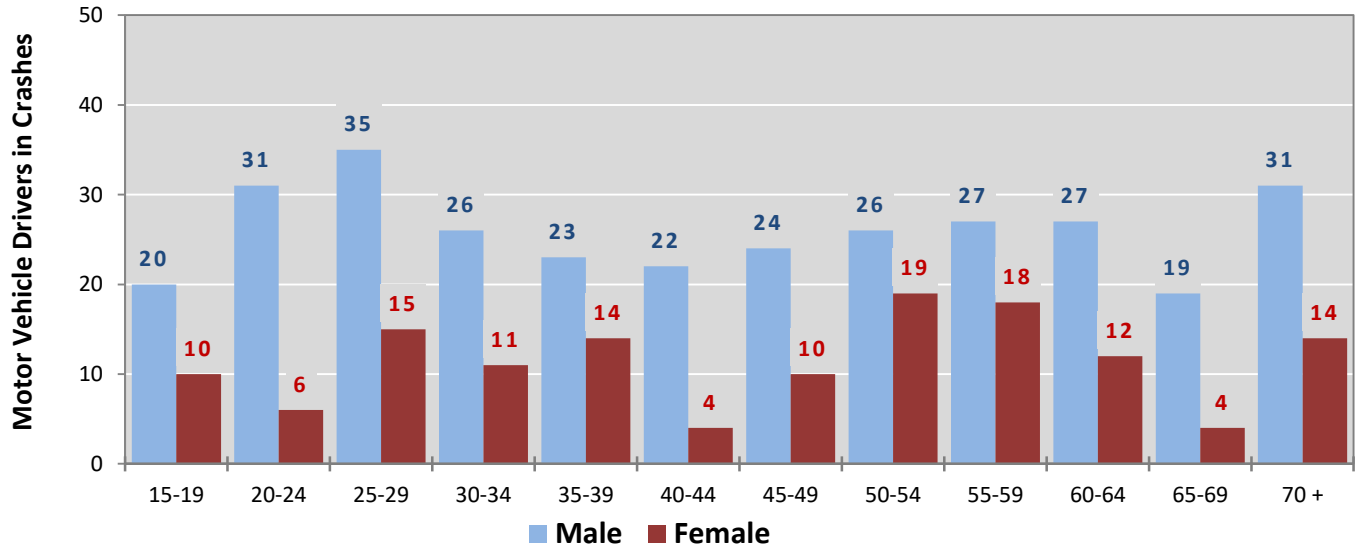
Age Groups	Motor Vehicle ¹ Drivers by Vehicle Type and Age Group								Total Drivers
	Bus	Motor-cycle	Passenger	Pickup	Semi	Van 4WD SUV	Other Vehicle	Missing Data	
15-19	0	0	17	5	0	6	1	1	30
20-24	0	0	18	6	2	8	3	0	37
25-29	0	1	24	11	5	8	2	0	51
30-34	0	0	15	7	1	11	3	0	37
35-39	0	0	12	12	2	11	0	1	38
40-44	0	1	8	7	4	6	2	0	28
45-49	0	2	17	6	2	5	2	0	34
50-54	0	2	12	13	2	13	3	0	45
55-59	0	4	11	11	5	13	1	0	45
60-64	0	3	13	12	3	6	2	0	39
65-69	0	2	12	4	0	3	2	0	23
70 +	0	0	19	16	1	9	0	0	45
Missing Data	0	0	16	4	2	7	2	8	39
Total Drivers	0	15	194	114	29	106	23	10	491

Table 12: Alcohol-involved Motor Vehicle Drivers in Crashes by Vehicle Type and Age Group in Colfax County, 2018

Age Groups	Alcohol-involved Motor Vehicle ¹ Drivers by Vehicle Type and Age Group								Total Drivers
	Bus	Motor-cycle	Passenger	Pickup	Semi	Van 4WD SUV	Other Vehicle	Missing Data	
15-19	0	0	0	0	0	0	0	0	0
20-24	0	0	1	0	0	0	0	0	1
25-29	0	0	0	1	0	0	0	0	1
30-34	0	0	0	0	0	0	0	0	0
35-39	0	0	1	2	0	0	0	0	3
40-44	0	0	0	1	0	0	0	0	1
45-49	0	1	2	0	0	0	0	0	3
50-54	0	0	0	0	0	0	0	0	0
55-59	0	0	0	1	0	0	0	0	1
60-64	0	0	0	0	0	0	0	0	0
65-69	0	0	1	0	0	0	0	0	1
70 +	0	0	0	1	0	0	0	0	1
Missing Data	0	0	1	0	0	0	0	0	1
Total Drivers	0	1	6	6	0	0	0	0	13

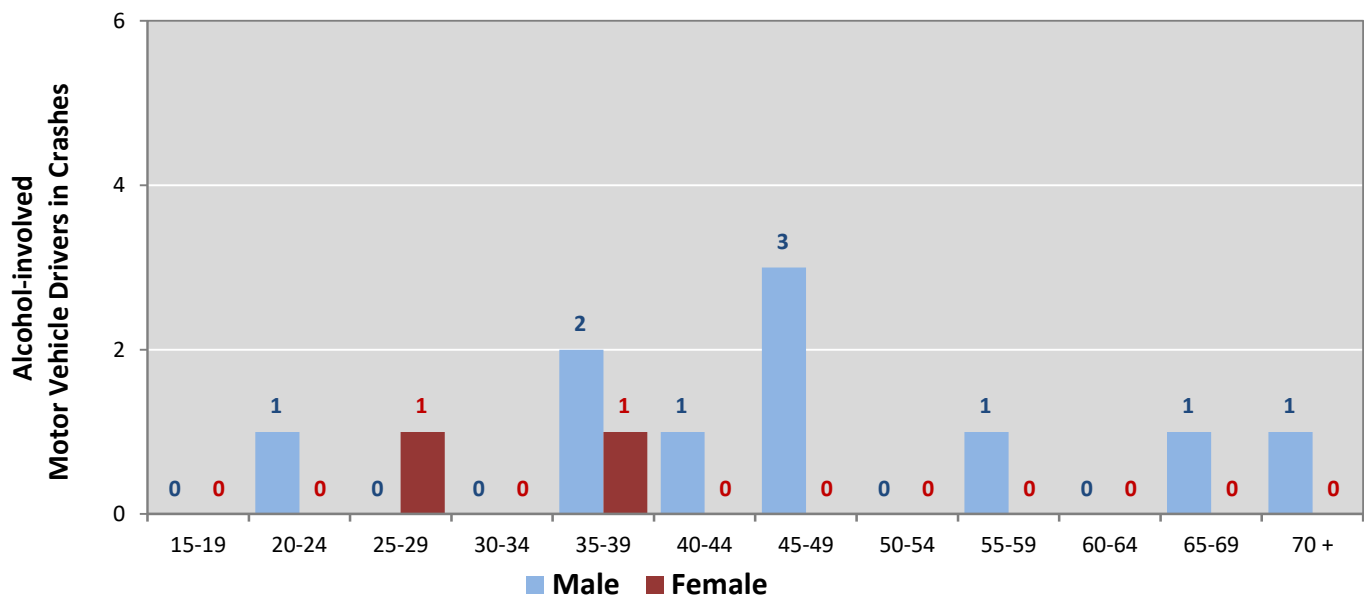
¹ See Page 17 for data on drivers of non-motorized vehicles in crashes (i.e. pedestrians and pedalcyclists).

Figure 6: Motor Vehicle Drivers in Crashes by Age Group and Sex in Colfax County, 2018



* In 2018, Colfax County had 43 drivers in crashes for which age or sex data were missing.

Figure 7: Alcohol-involved Motor Vehicle Drivers in Crashes by Age Group and Sex in Colfax County, 2018



* In 2018, Colfax County had 1 drivers in crashes for which age or sex data were missing.

Table 13: Alcohol-involved Motor Vehicle Drivers Under 21 (Ages 15-20) in Crashes in Colfax County, 2014-2018

Age ¹	Year					5-Year Total
	2014	2015	2016	2017	2018	
15	0	0	0	0	0	0
16	0	0	0	0	0	0
17	1	0	1	0	0	2
18	1	0	0	0	0	1
19	0	1	1	0	0	2
20	0	0	0	0	0	0
Total Drivers	2	1	2	0	0	5

Table 14: Motor Vehicle Drivers Under 21 (Ages 15-20) in Crashes by Age, Sex and Alcohol-involvement in Colfax County, 2018

Age ¹	Total Drivers				Alcohol-involved Drivers			
	Sex		Total Drivers	Percent of Total	Sex		Total Drivers	Percent of Total
	Male	Female			Male	Female		
15	2	1	3	8%	0	0	0	0%
16	0	3	3	8%	0	0	0	0%
17	5	0	5	14%	0	0	0	0%
18	6	2	8	22%	0	0	0	0%
19	7	4	11	31%	0	0	0	0%
20	5	1	6	17%	0	0	0	0%
Total Drivers	25	11	36	100%	0	0	0	0%

¹ For analysis of drivers under age 21, when the driver age or sex are not identified on the crash report (typically hit-and-run drivers), the driver data are considered unreliable and are excluded from the analysis.

**Table 15: Frequency of Contributing Factors in Crashes
by Crash Severity in Colfax County, 2018**

Contributing Factors	Frequency of Contributing Factor ¹ by Crash Severity			
	Frequency in Fatal Crashes	Frequency in Injury Crashes	Frequency in Property Damage Only Crashes	Frequency in All Crashes
Human	9	150	332	491
Driver Inattention	1	42	111	154
Other Improper Driving	2	23	57	82
Speed Too Fast for Conditions	0	19	26	45
Excessive Speed	0	18	18	36
Avoid No Contact - Other	1	5	17	23
Avoid No Contact - Vehicle	0	8	15	23
Failed to Yield Right of Way	0	7	16	23
Following Too Closely	0	7	11	18
Improper Backing	0	0	17	17
Drove Left Of Center	1	5	8	14
Alcohol Involved	2	4	7	13
Made Improper Turn	0	5	3	8
Vehicle Skidded Before Brake	1	1	6	8
Improper Lane Change	0	2	4	6
Passed Stop Sign	0	1	4	5
Drug Involved	1	1	3	5
Improper Overtaking	0	1	3	4
Driverless Moving Vehicle	0	1	2	3
Failed to Yield to Police Vehicle	0	0	3	3
Disregarded Traffic Signal	0	0	1	1
Cell Phone	0	0	0	0
Failed to Yield to Emergency Vehicle	0	0	0	0
High Speed Pursuit	0	0	0	0
Pedestrian Error	0	0	0	0
Texting	0	0	0	0
Vehicle	1	5	17	23
Other Mechanical Defect	0	4	8	12
Defective Tires	1	0	5	6
Inadequate Brakes	0	1	3	4
Defective Steering	0	0	1	1
Environment	0	1	1	2
Road Defect	0	1	1	2
Low Visibility Due to Smoke	0	0	0	0
Traffic Control Not Functioning	0	0	0	0
Other	4	47	194	245
None	2	32	110	144
Other - No Driver Error	2	15	84	101

¹ Multiple contributing factors may be reported for any vehicle in a crash.

Table 16: People in Crashes by Crash Classification and Severity of Injuries in Colfax County, 2018

Crash Classification	People in Crashes by Severity of Injuries					Total People
	Fatalities (Class K)	Suspected Serious Injuries (Class A)	Suspected Minor Injuries (Class B)	Possible Injuries (Class C)	No Apparent Injuries (Class O)	
Animal	0	3	8	5	166	182
Fixed Object	1	2	10	11	97	121
Other (Non-Collision)	0	1	1	0	19	21
Other (Object)	0	0	1	3	26	30
Other Vehicle	0	4	8	22	226	260
Overturn/Rollover	2	7	14	17	24	64
Parked Vehicle	0	0	1	0	44	45
Pedalcyclist	0	0	0	2	2	4
Pedestrian	2	0	0	0	11	13
Railroad Train	0	0	0	0	0	0
Rollover	0	0	2	1	10	13
Vehicle on Other Road	0	0	0	0	2	2
Missing Data	0	0	0	0	3	3
Total People	5	17	45	61	630	758

Table 17: Killed or Injured Unbelted People in Crashes by Sex and Age Group in Colfax County, 2018

Age Groups	Unbelted People Killed or Injured ^{1,2}				Total People
	Male	Percent of Male	Female	Percent of Female	
0-4	0	0%	1	33%	1
5-9	1	20%	0	0%	1
10-14	0	0%	1	33%	1
15-19	0	0%	0	0%	0
20-24	0	0%	0	0%	0
25-29	2	40%	0	0%	2
30-34	0	0%	0	0%	0
35-39	0	0%	0	0%	0
40-44	0	0%	0	0%	0
45-49	1	20%	0	0%	1
50-54	0	0%	0	0%	0
55-59	0	0%	0	0%	0
60-64	0	0%	0	0%	0
65-69	1	20%	0	0%	1
70 +	0	0%	0	0%	0
Missing Data	0	0%	1	33%	1
Total People	5	100%	3	100%	8

¹ People injured are in one of three categories: suspected serious injury, suspected minor injury, or possible injury.

² Excludes people in or on buses, heavy trucks, motorcycles, or ATVs.

Figure 8: Seatbelt Use by People in Crashes with Fatal or Suspected Serious Injuries in Colfax County, 2014-2018

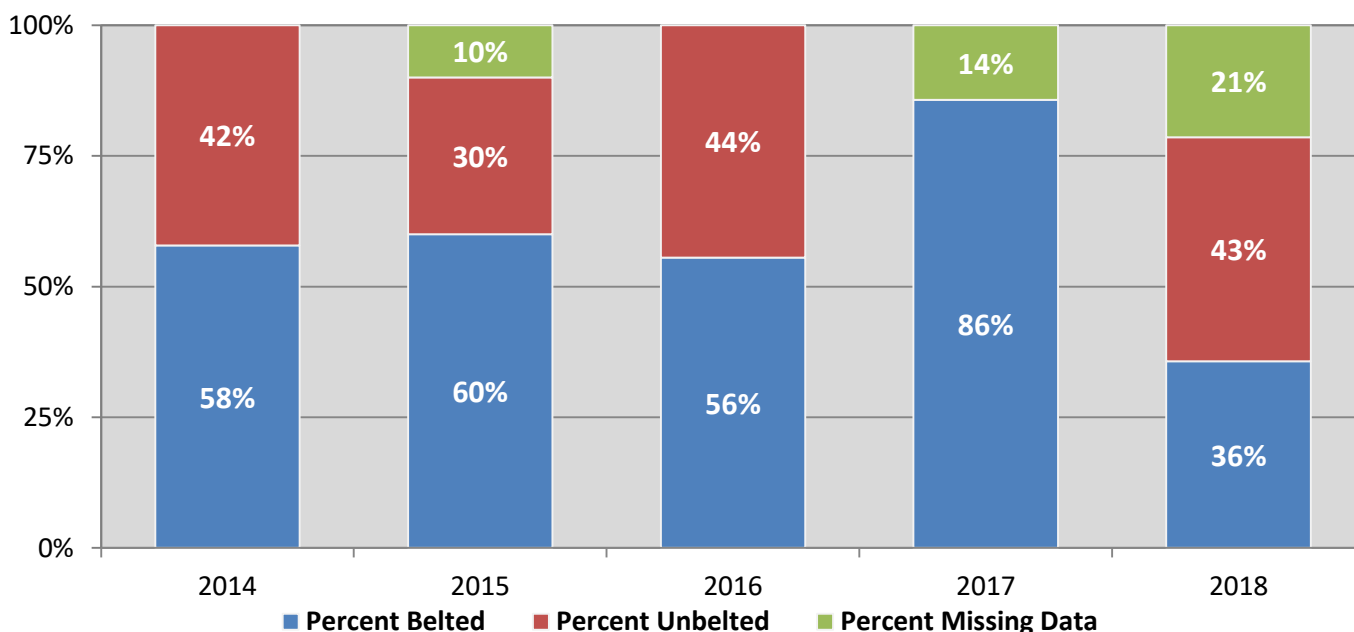
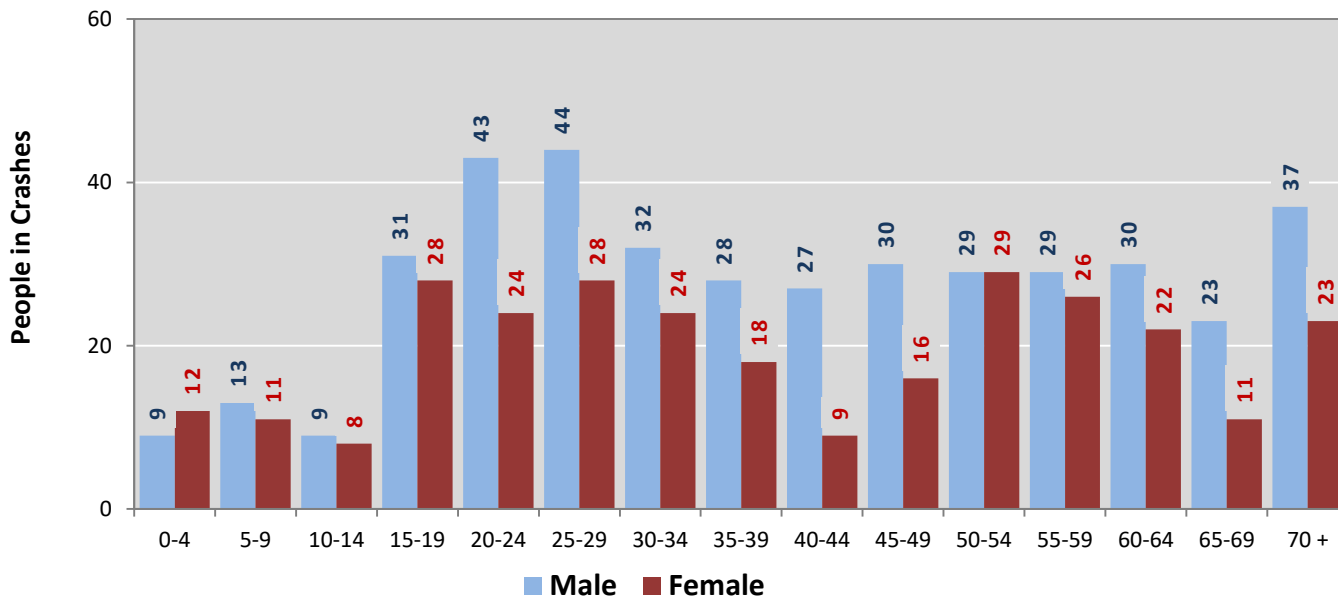
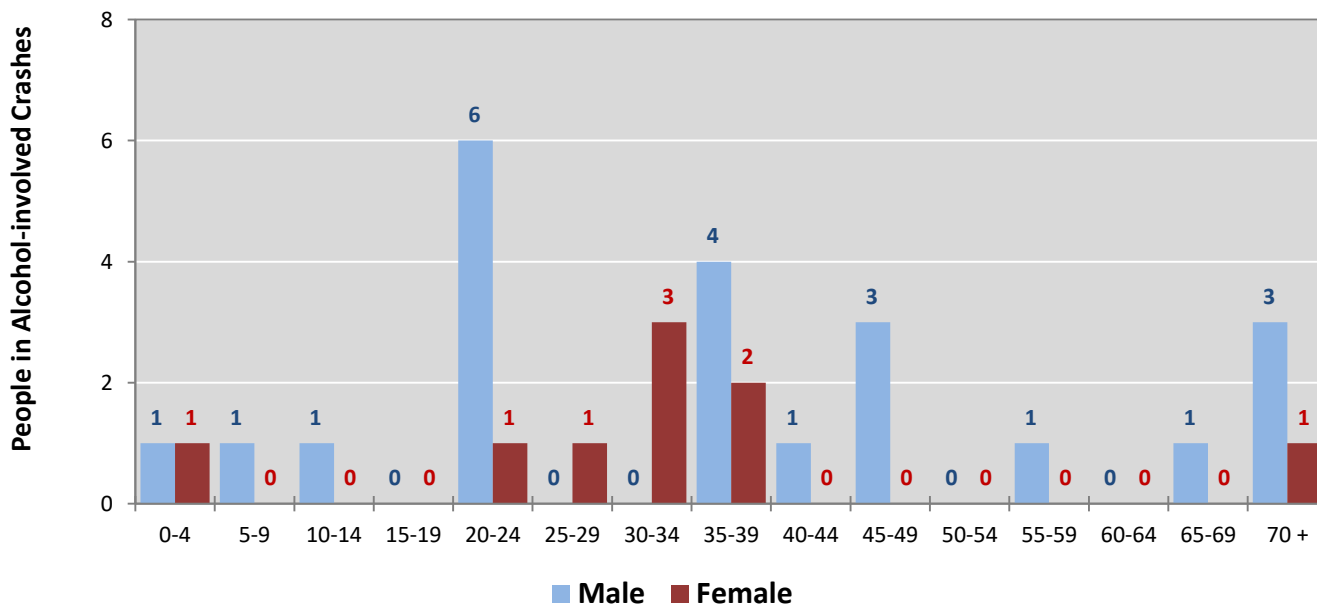


Figure 9: People in Crashes by Age Group and Sex in Colfax County, 2018



* In 2018, Colfax County had 55 people in crashes for which age or sex data were missing.

Figure 10: People in Alcohol-involved Crashes by Age Group and Sex in Colfax County, 2018



* In 2018, Colfax County had 7 people in alcohol-involved crashes for which age or sex data were missing.

Table 18: Pedestrians and Pedalcyclists in Crashes by Age Group in Colfax County, 2014-2018

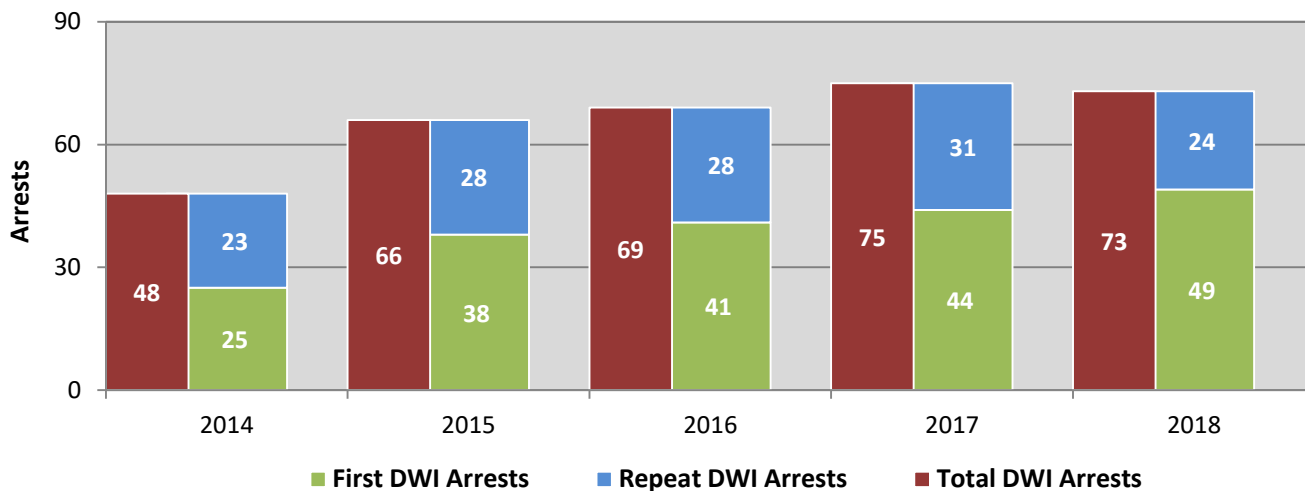
Age Groups	Pedestrians and Pedalcyclists ¹ in Crashes					5-Year Total People
	2014	2015	2016	2017	2018	
0-4	0	0	0	0	0	0
5-9	0	0	1	0	0	1
10-14	0	0	0	2	0	2
15-19	0	0	0	1	1	2
20-24	0	0	0	0	1	1
25-29	0	0	0	0	0	0
30-34	0	0	0	0	0	0
35-39	0	0	1	0	0	1
40-44	0	0	0	0	0	0
45-49	0	0	0	0	1	1
50-54	1	0	0	0	0	1
55-59	0	0	0	0	0	0
60-64	0	1	0	0	0	1
65-69	0	1	0	0	0	1
70 +	0	1	0	0	1	2
Missing Data	0	0	1	0	0	1
Total People	1	3	3	3	4	14

Table 19: Pedestrians and Pedalcyclists in Crashes by Alcohol Involvement and Severity of Injuries in Colfax County, 2018

Alcohol Involvement	Pedestrians and Pedalcyclists ¹ in Crashes					Total People
	Fatalities (Class K)	Suspected Serious Injuries (Class A)	Suspected Minor Injuries (Class B)	Possible Injuries (Class C)	No Apparent Injury (Class O)	
Total Pedalcyclists	0	0	0	2	0	2
Involved	0	0	0	0	0	0
Not Involved	0	0	0	2	0	2
Total Pedestrians	2	0	0	0	0	2
Involved	1	0	0	0	0	1
Not Involved	1	0	0	0	0	1
Total People	2	0	0	2	0	4

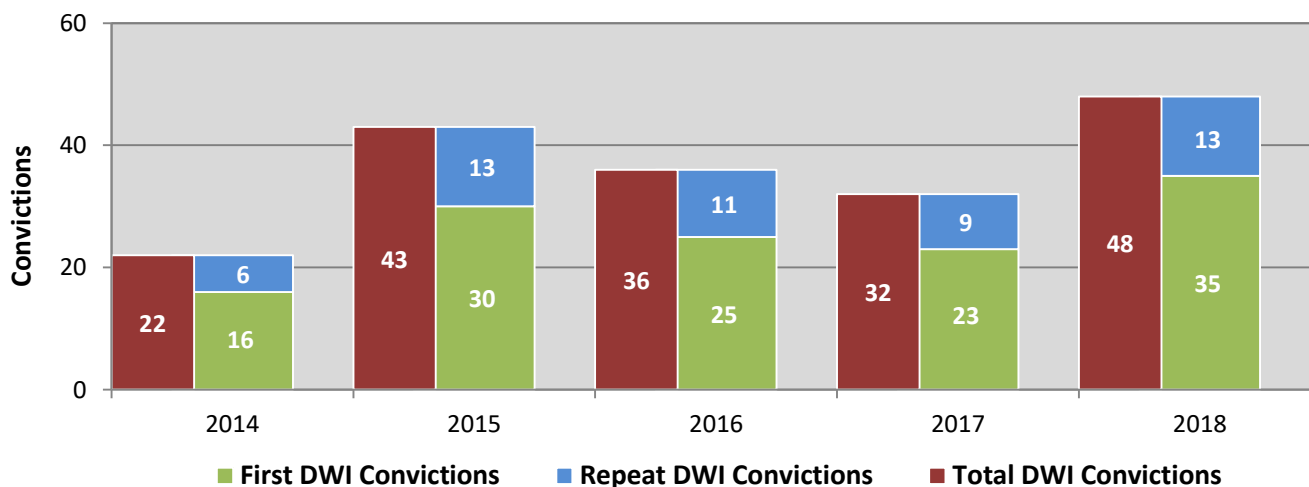
¹ Pedestrians and pedalcyclists are counted as non-motorized vehicles, when involved in a crash with a motor vehicle.

**Figure 11: DWI Arrests in Colfax County,
Showing First and Repeat DWI Arrests, 2014-2018**



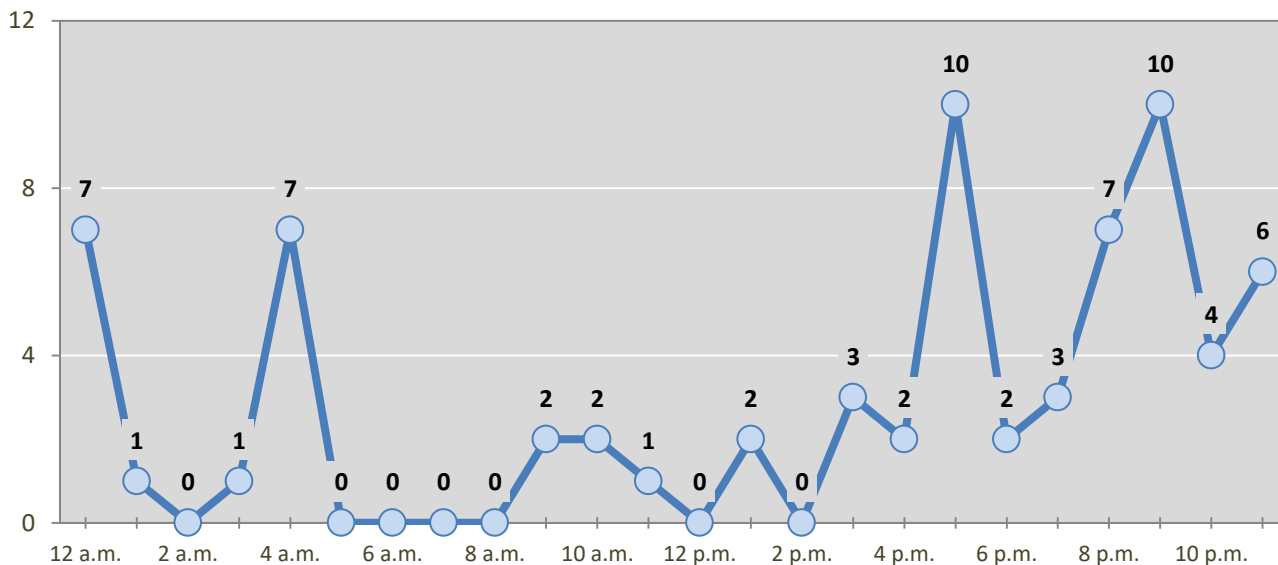
*Values are based upon the year of the arrest.

**Figure 12: DWI Convictions in Colfax County,
Showing First and Repeat DWI Convictions, 2014-2018**



*Values are based upon the year of the conviction.

Figure 13: DWI Arrests by Hour in Colfax County, 2018



* In 2018, Colfax County had 3 arrests for which hour data were missing.

Table 20: DWI Arrests by Day of Week in Colfax County, 2014-2018

Day of Week	Year					5-Year Average
	2014	2015	2016	2017	2018	
Sunday	10	14	11	15	7	11
Monday	1	6	10	8	12	7
Tuesday	7	9	8	9	10	9
Wednesday	10	2	7	9	6	7
Thursday	4	9	7	10	14	9
Friday	10	10	13	11	18	12
Saturday	6	16	13	13	6	11
Total Arrests	48	66	69	75	73	66

Table 21: Driver First DWI Arrests by Age Group in Colfax County, 2014-2018

Age Groups	Driver First DWI Arrests ¹				
	2014	2015	2016	2017	2018
15-19	2	3	3	4	4
20-24	6	5	8	6	10
25-29	5	4	12	6	9
30-34	3	5	3	5	0
35-39	2	4	2	4	6
40-44	0	2	4	6	2
45-49	3	4	1	3	4
50-54	1	2	3	2	6
55-59	2	2	3	3	4
60-64	0	4	0	3	2
65-69	1	2	1	1	0
70 +	0	1	1	1	2
Missing Data	0	0	0	0	0
Total Drivers	25	38	41	44	49

¹ Values are based upon the year of the arrest.

Table 22: Driver Repeat DWI Arrests by Age Group in Colfax County, 2014-2018

Age Groups	Driver Repeat DWI Arrests ¹				
	2014	2015	2016	2017	2018
15-19	0	0	0	0	1
20-24	0	2	0	1	1
25-29	4	4	3	5	4
30-34	6	6	4	3	2
35-39	2	1	5	2	2
40-44	4	4	6	4	3
45-49	3	3	3	2	3
50-54	1	2	1	3	4
55-59	0	2	4	5	0
60-64	2	4	1	4	4
65-69	0	0	1	2	0
70 +	1	0	0	0	0
Missing Data	0	0	0	0	0
Total Drivers	23	28	28	31	24

¹ Values are based upon the year of the arrest.

Table 23: Driver First DWI Convictions by Age Group in Colfax County, 2014-2018

Age Groups	Driver First DWI Convictions ¹				
	2014	2015	2016	2017	2018
15-19	1	2	1	2	2
20-24	1	6	4	6	4
25-29	3	5	5	7	3
30-34	2	1	4	1	4
35-39	2	4	2	1	2
40-44	2	1	1	3	5
45-49	1	2	1	2	4
50-54	1	2	3	0	4
55-59	1	3	3	0	2
60-64	1	3	0	1	3
65-69	1	1	0	0	0
70 +	0	0	1	0	2
Missing Data	0	0	0	0	0
Total Drivers	16	30	25	23	35

¹Values are based upon the year of the conviction.

Table 24: Driver Repeat DWI Convictions by Age Group in Colfax County, 2014-2018

Age Groups	Driver Repeat DWI Convictions ¹				
	2014	2015	2016	2017	2018
15-19	0	0	0	0	0
20-24	0	1	0	0	0
25-29	3	2	2	2	4
30-34	0	2	1	1	2
35-39	0	1	1	1	1
40-44	0	3	3	0	1
45-49	1	2	2	0	0
50-54	1	1	0	1	2
55-59	0	0	1	1	2
60-64	1	1	1	1	1
65-69	0	0	0	2	0
70 +	0	0	0	0	0
Missing Data	0	0	0	0	0
Total Drivers	6	13	11	9	13

¹Values are based upon the year of the conviction.

Table 25: Court Disposition of DWI Arrests for Colfax County and the State, 2018

Court Disposition of DWI Arrest ¹	Colfax County	Statewide	Percent of Statewide
Total DWI Arrests	73	10,205	0.7%
DWI Arrests Resulting in Convictions	37	4,641	0.8%
DWI Arrests Resulting in Dismissals ²	2	880	0.2%
DWI Arrests Awaiting Disposition	34	4,684	0.7%

¹ These are the number of DWI arrests in 2018 and whether the case resulted in a conviction or dismissal, or is still awaiting court disposition, as reported in the NM MVD Citation Tracking System (CTS) as of July 2019.

² For this table, a very small number of "not guilty" rulings may be included in the category Dismissals.

**Table 26: Average Number of Days from Date of DWI Arrest
Date of Court Disposition in Colfax County and the State, 2018**

to

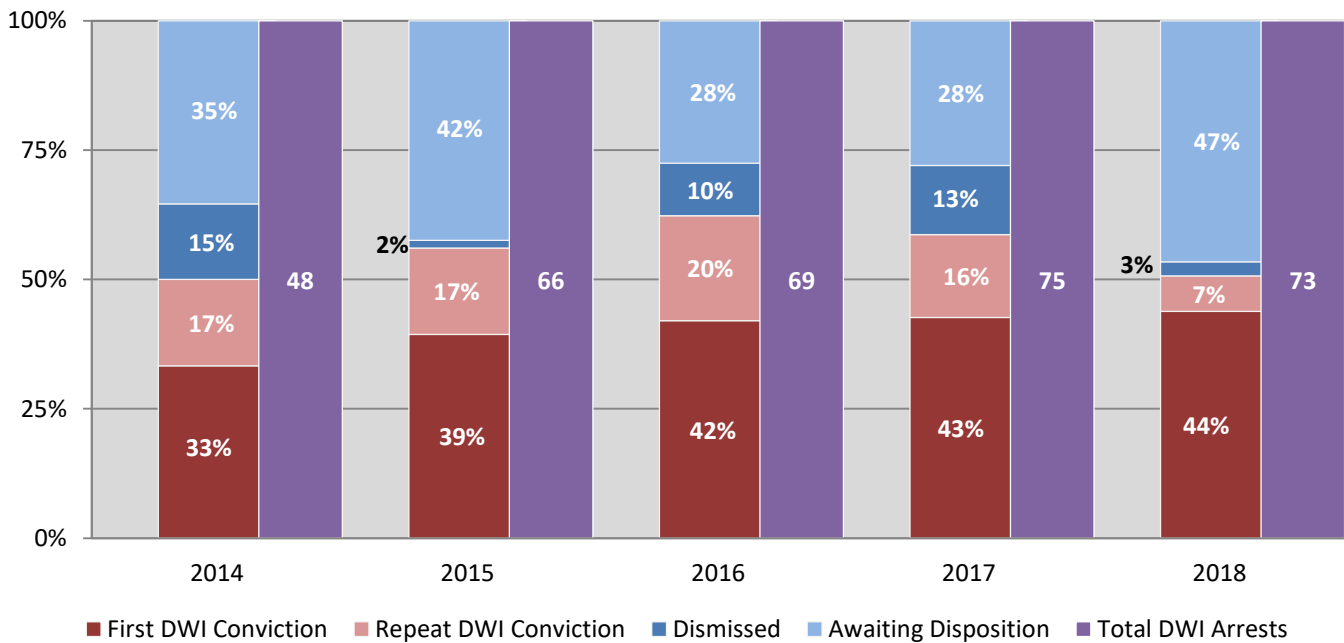
Court Disposition	Average Number of Days		Deviation from Statewide Average
	Colfax County	Statewide	
DWI Conviction	144	145	-2
DWI Dismissal	98	153	-55

Table 27: Court Disposition of DWI Arrests in Colfax County, 2014-2018

Year of DWI Arrest ¹	Court Disposition				Total DWI Arrests
	First DWI Conviction	Repeat DWI Conviction	Dismissed	Awaiting Disposition	
2014	16	8	7	17	48
2015	26	11	1	28	66
2016	29	14	7	19	69
2017	32	12	10	21	75
2018	32	5	2	34	73

¹ Values are based upon the year of the arrest.

Figure 14: Court Dispositions by Percentage of DWI Arrests in Colfax County, 2014-2018



*Table 27 contains the values used to calculate percentages shown in Figure 14.