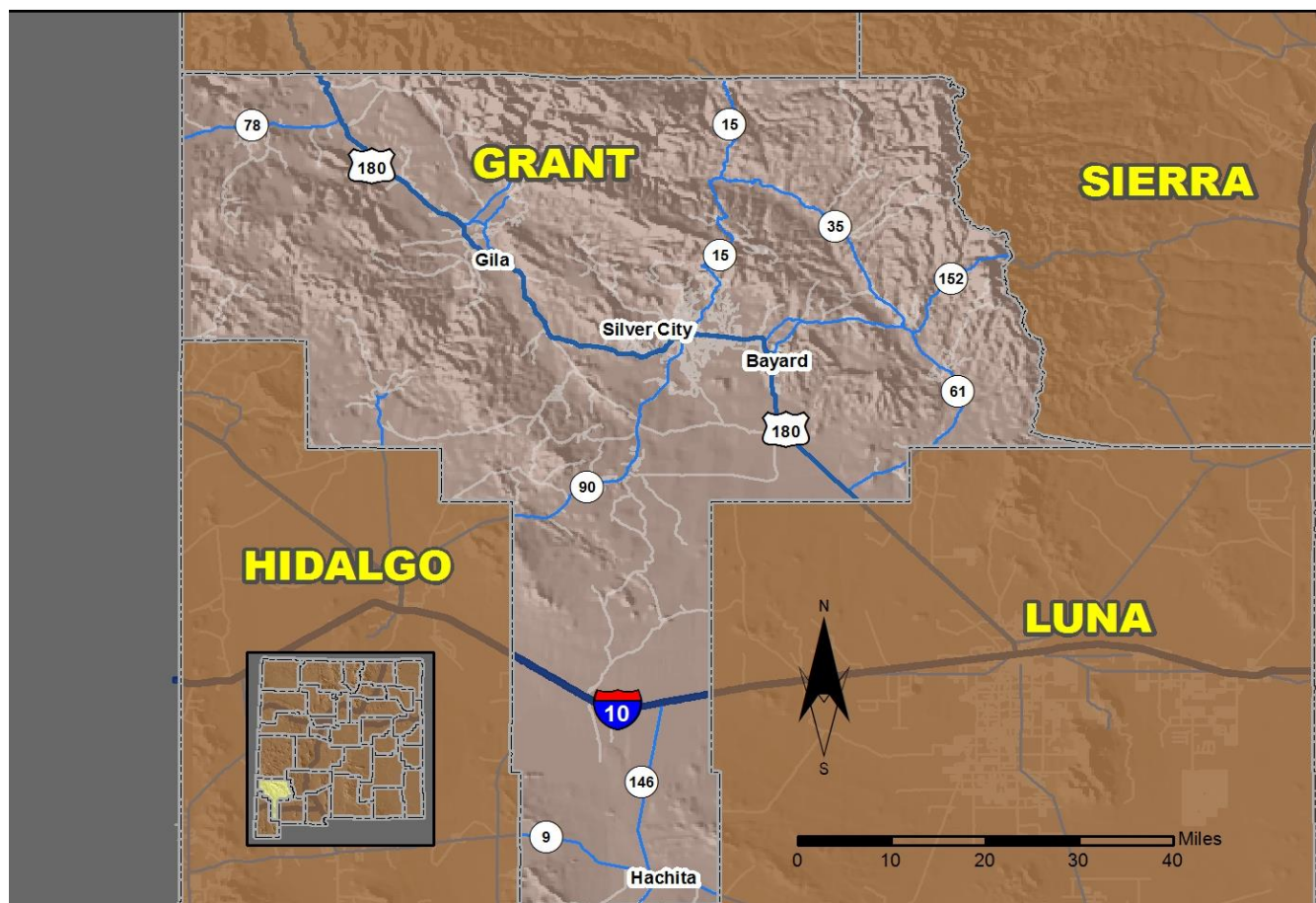


2018 Community Report

Grant County



Produced for the New Mexico Department of Transportation,
Traffic Safety Division, Traffic Records Bureau,
Under Contract 6093 by the University of New Mexico,
Geospatial and Population Studies, Traffic Research Unit

Distributed in compliance with New Mexico Statute 66-7-214
as a reference source regarding New Mexico traffic crashes

For the purposes of this report, data are compiled by the University of New Mexico, Geospatial and Population Studies, Traffic Research Unit (TRU), on behalf of the New Mexico Department of Transportation (NMDOT). Data in this report may differ from that in other data sources, such as the Federal Fatality Analysis Reporting System (FARS), due to the timing of publications and rules for how data are compiled and maintained in Federal vs. State databases. If you have questions regarding this report, please contact the Traffic Safety Division at 505-827-0427.

<https://gps.unm.edu/tru/crash-reports/community-reports>

Definitions

Aggravated DWI – A driver arrested for 1) driving with a BAC of 0.16 or higher, 2) driving under the influence of alcohol or drugs and causing bodily injury to a human being as a result, or 3) driving under the influence of alcohol or drugs and refusing to submit to a BAC test at the time of arrest for DWI.

Alcohol-involved Crash – A crash for which the Uniform Crash Report indicated that 1) a DWI citation was issued, 2) alcohol was a contributing factor, or 3) a person in control of a vehicle (including a pedestrian or pedalcyclist) was suspected of being under the influence of alcohol.

Alcohol-involved Driver – A person in control of a vehicle who was cited for DWI or indicated on the Uniform Crash Report as being either suspected or determined by testing to be under the influence of alcohol. There can be multiple alcohol-involved drivers in a single alcohol-involved crash.

Crash – A reported incident on a public roadway involving one or more motor vehicles that resulted in death, personal injury, or at least \$500 in property damage. Crashes on private property (such as a parking lot) are not included.

DWI Arrest (Citation) – In this report, a DWI arrest (a.k.a. a DWI citation) is a driver arrested for either DWI or aggravated DWI. New Mexico’s legal limit for presumption of driving while intoxicated (DWI) is 0.08 for non-commercial drivers older than 21 years of age, 0.04 for commercial vehicle drivers, and 0.02 for drivers younger than 21 years of age.

DWI Conviction – A driver convicted of driving under the intoxicating influence of alcohol, narcotics, or pathogenic drugs, including aggravated DWI.

Fatal Crash – A crash in which at least one person was killed. More than one person can be killed in a single fatal crash.

Fatalities – The number of people killed in a crash. The terms “killed” and “deaths” are synonymous with “fatalities.” A fatality is crash-related if it occurs at the time of the crash or if the person(s) involved in the crash dies within 30 days.

Injury Crash – A reported crash in which at least one person was injured. Injury crashes involve at least one suspected serious injury (Class A), suspected minor injury (Class B), or possible injury (Class C). Fatal crashes are not included.

Missing Data – An indication that the applicable field on the UCR form was left blank or contained an invalid code. Starting with crashes that occurred in 2012, improvements in the identification of missing data in the NMDOT crash database led to an increase in the reported amount of missing data.

Pedalcyclist – A person riding a mechanism of transport that is powered solely by pedals (a.k.a. bicyclist).

Pedestrian – A person on foot, walking, running, jogging, hiking, sitting or lying down who is involved in a motor vehicle traffic crash.

Sources

Crash Data – New Mexico Department of Transportation, Traffic Safety Division, Traffic Records Bureau, Traffic Crash Database, as of the report date below. Crash data are compiled using NMDOT Uniform Crash Reports (UCR), submitted by law enforcement agencies in the state, for any incident on a public roadway involving one or more motor vehicles that resulted in death, injury, or at least \$500 in property damage. These reports are processed by the NMDOT Traffic Records Bureau and analyzed by the University of New Mexico, Geospatial and Population Studies, Traffic Research Unit (TRU).

DWI Citation Tracking System (CTS) – New Mexico Taxation and Revenue Department (NM TRD), Motor Vehicle Division (MVD), DWI Citation Tracking System (CTS), as of July 2019. Repeat offenders are identified by the combination of account key, arrest date, and citation number. County data are based upon the county where the arrest took place. City data are based upon the city where the offender resides.

Urban Areas – Areas defined by the New Mexico Department of Transportation, Asset Management and Planning, 2010 U.S. Census Urbanized Area Boundaries, NMDOT-Adjusted, and U.S. Census Urban Clusters, August 21, 2013. Urban areas for crash years 2013-2017 include a 1/2 mile buffer extending out from those urban boundaries. In crashes before 2013, “urban” was defined as a town or city with a population of at least 2,500 people.

**Table 1: Total Crashes and Alcohol-involved Crashes by
Crash Severity in Grant County, 2009-2018**

Year	Total Crashes				Alcohol-involved Crashes			
	Fatal	Injury	Property Damage Only	Total	Fatal	Injury	Property Damage Only	Total
2009	1	139	423	563	1	17	15	33
2010	7	113	324	444	3	12	8	23
2011	4	147	378	529	2	17	13	32
2012	5	129	501	635	1	15	21	37
2013	5	159	434	598	1	19	15	35
2014	2	141	484	627	0	18	19	37
2015	3	140	462	605	1	13	18	32
2016	3	150	400	553	3	14	14	31
2017	8	152	395	555	3	8	6	17
2018	1	134	443	578	1	6	12	19

**Figure 1: Alcohol-involved Fatal and Injury Crashes Compared with
Non-alcohol-involved Fatal and Injury Crashes in Grant County, 2009-2018**

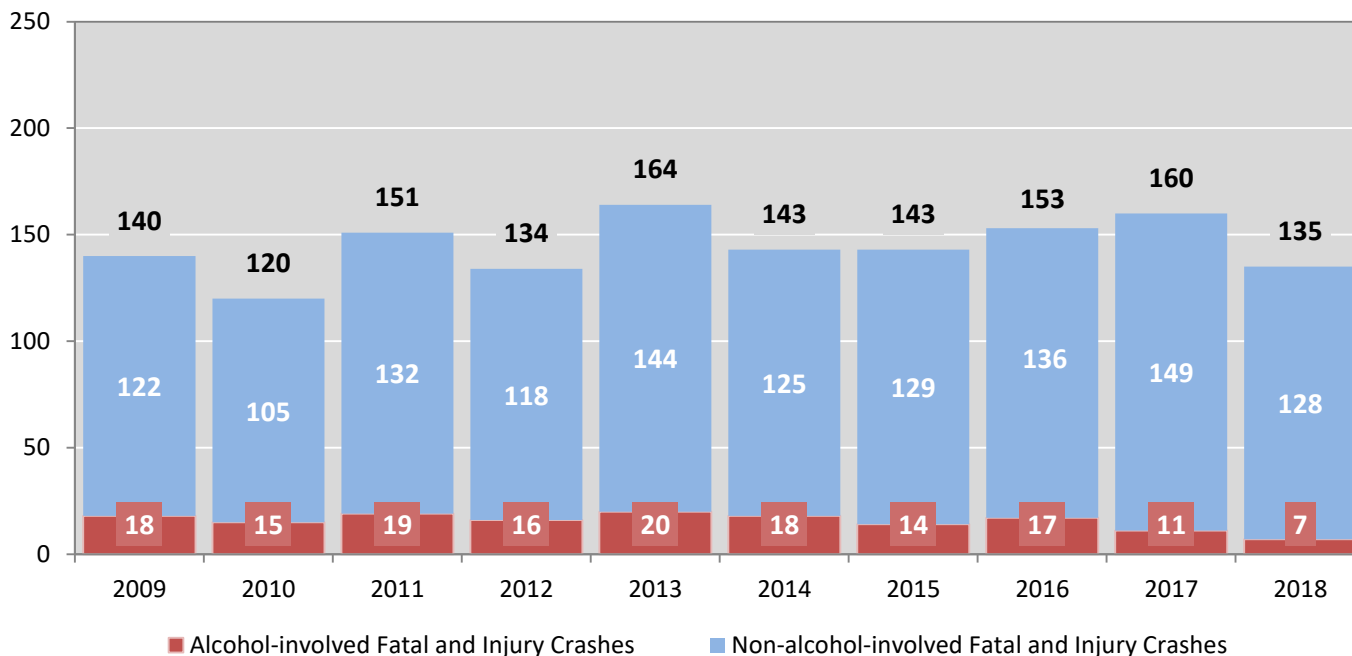


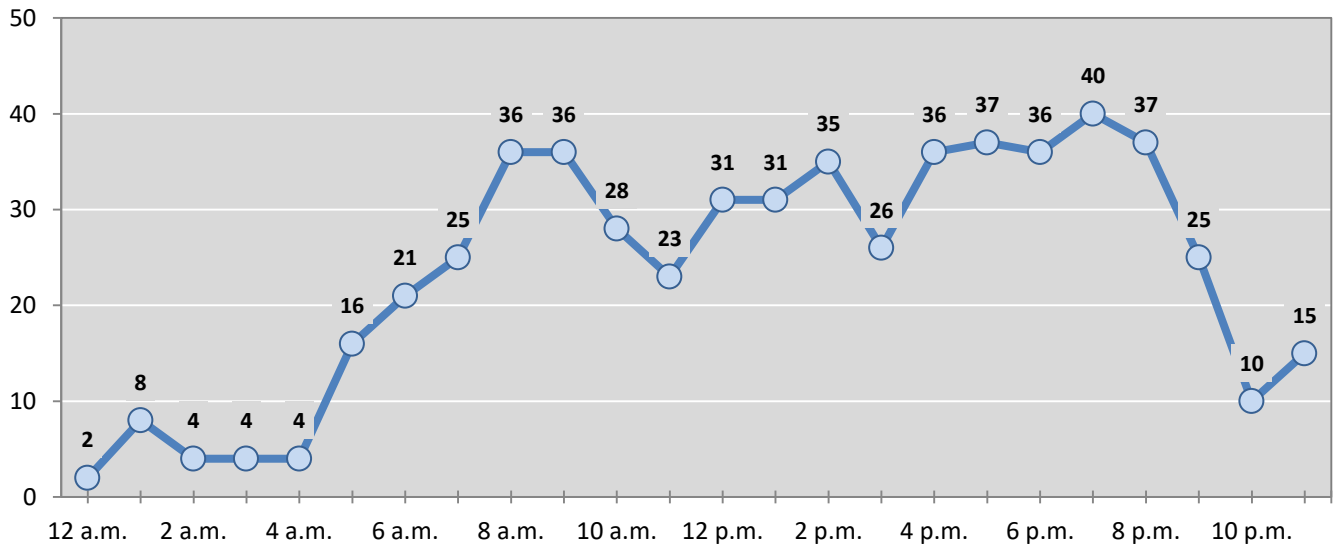
Table 2: Crashes by Month in Grant County, 2014-2018

Month	Crashes					5-Year Average
	2014	2015	2016	2017	2018	
January	51	40	47	32	54	45
February	40	45	49	33	27	39
March	40	51	54	51	35	46
April	81	41	53	43	50	54
May	45	44	24	54	48	43
June	54	57	38	34	45	46
July	43	35	54	43	54	46
August	53	44	41	52	47	47
September	59	58	53	64	56	58
October	55	65	51	54	54	56
November	51	54	49	53	64	54
December	55	71	40	42	44	50
Total Crashes	627	605	553	555	578	584

Table 3: Alcohol-involved Crashes by Month in Grant County, 2014-2018

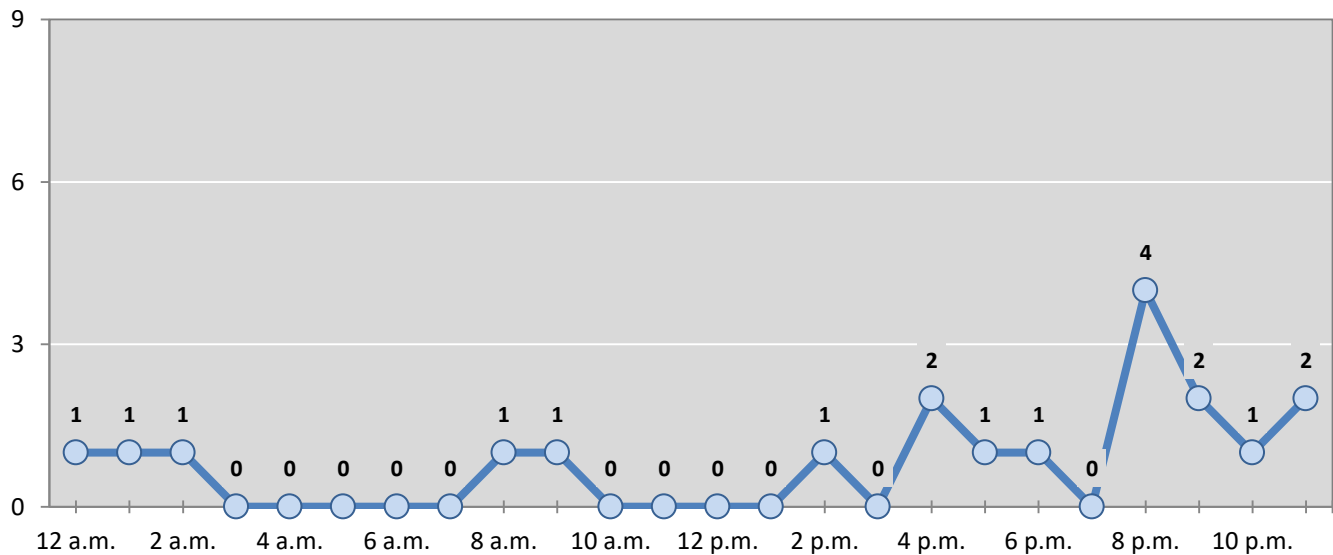
Month	Alcohol-involved Crashes					5-Year Average
	2014	2015	2016	2017	2018	
January	1	2	3	0	4	2
February	4	1	3	2	3	3
March	2	5	4	2	0	3
April	2	2	2	3	1	2
May	3	0	1	1	1	1
June	1	5	0	0	0	1
July	1	3	6	1	4	3
August	5	1	2	2	1	2
September	4	1	5	0	0	2
October	6	3	1	3	3	3
November	4	5	3	0	1	3
December	4	4	1	3	1	3
Total Crashes	37	32	31	17	19	27

Figure 2: Crashes by Hour in Grant County, 2018



* In 2018, Grant County had 12 crashes for which hour data were missing.

Figure 3: Alcohol-involved Crashes by Hour in Grant County, 2018



* In 2018, Grant County had 0 alcohol-involved crashes for which hour data were missing.

Table 4: Alcohol-involved Crashes by Day of Week in Grant County, 2014-2018

Day of Week	Alcohol-involved Crashes					5-Year Average
	2014	2015	2016	2017	2018	
Sunday	3	6	7	3	3	4
Monday	2	3	5	0	4	3
Tuesday	6	2	4	0	0	2
Wednesday	5	3	4	2	1	3
Thursday	8	6	3	5	4	5
Friday	7	6	4	1	4	4
Saturday	6	6	4	6	3	5
Total Crashes	37	32	31	17	19	27

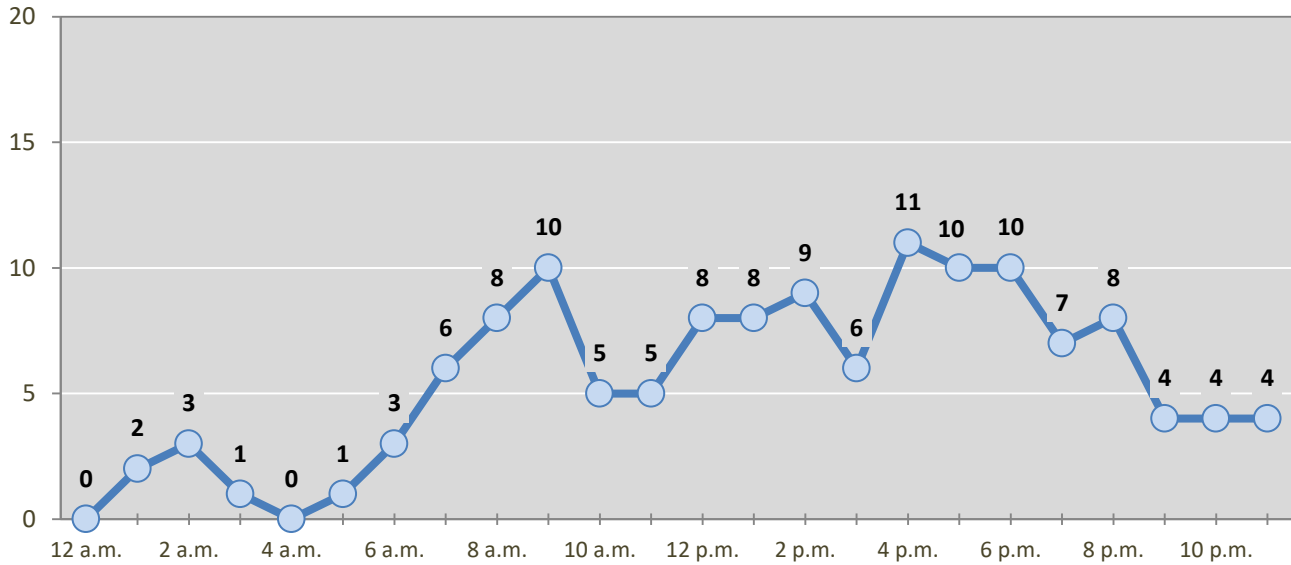
Table 5: Fatal and Injury Crashes by Day of Week in Grant County, 2014-2018

Day of Week	Fatal and Injury Crashes					5-Year Average
	2014	2015	2016	2017	2018	
Sunday	13	14	15	17	10	14
Monday	22	26	27	20	24	24
Tuesday	22	21	31	17	21	22
Wednesday	23	18	19	28	22	22
Thursday	22	28	24	30	14	24
Friday	23	16	23	22	23	21
Saturday	18	20	14	26	21	20
Total Crashes	143	143	153	160	135	147

Table 6: Pedestrian and Pedalcyclist Crashes by Day of Week in Grant County, 2014-2018

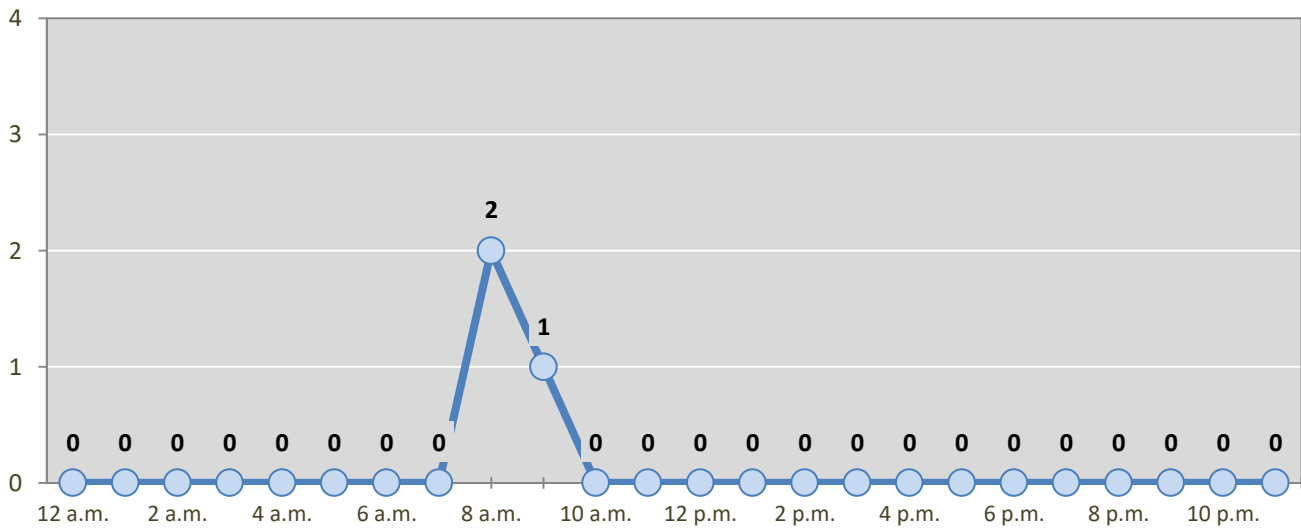
Day of Week	Pedestrian and Pedalcyclist Crashes					5-Year Average
	2014	2015	2016	2017	2018	
Sunday	0	0	3	0	0	1
Monday	2	2	1	1	0	1
Tuesday	2	2	1	0	0	1
Wednesday	3	1	1	2	1	2
Thursday	2	1	1	2	1	1
Friday	2	0	1	3	1	1
Saturday	1	1	0	2	0	1
Total Crashes	12	7	8	10	3	8

Figure 4: Fatal and Injury Crashes by Hour in Grant County, 2018



* In 2018, Grant County had 2 crashes for which hour data were missing.

Figure 5: Pedestrian and Pedalcyclist Crashes by Hour in Grant County, 2018



* In 2018, Grant County had 0 crashes for which hour data were missing.

Table 7: Severity of Injuries to People in Crashes by Rural and Urban Location in Grant County, 2018

Urban and Rural Locations by Alcohol-involvement	People in Crashes by Severity of Injuries					Total People
	Fatalities (Class K)	Suspected Serious Injuries (Class A)	Suspected Minor Injuries (Class B)	Possible Injuries (Class C)	No Apparent Injuries (Class O)	
People in Alcohol-involved Crashes	1	0	4	8	32	45
Urban	0	0	3	3	16	22
Rural Non-Interstate	0	0	1	1	12	14
Rural Interstate	1	0	0	4	4	9
People in Crashes	1	10	48	136	982	1,177
Urban	0	4	13	66	516	599
Rural Non-Interstate	0	6	33	64	446	549
Rural Interstate	1	0	2	6	20	29
Percent in Alcohol-involved Crashes	100%	0%	8%	6%	3%	4%

Table 8: Total Crashes by Roadway System and Crash Severity in Grant County, 2014-2018

Crash Severity by System	Crashes by Year					5-Year Average
	2014	2015	2016	2017	2018	
Total Rural Interstate	18	18	24	19	11	18
Fatal Crash	1	1	0	3	1	1
Injury Crash	6	4	7	6	5	6
Property Damage Only Crash	11	13	17	10	5	11
Total Rural Non-Interstate	239	218	214	207	308	238
Fatal Crash	1	1	2	5	0	2
Injury Crash	50	36	43	49	75	51
Property Damage Only Crash	188	181	169	153	233	185
Total Urban	370	369	315	329	259	328
Fatal Crash	0	1	1	0	0	0
Injury Crash	85	100	100	97	54	87
Property Damage Only Crash	285	268	214	232	205	241

Table 9: Total Crashes by Crash Classification in Grant County, 2014-2018

Crash Classification	Total Crashes by Year					5-Year Average
	2014	2015	2016	2017	2018	
Animal	134	140	138	160	178	150
Fixed Object	95	76	68	61	70	74
Other (Non-Collision)	14	8	24	14	14	15
Other (Object)	20	11	7	14	13	13
Other Vehicle	237	257	230	221	226	234
Overturn/Rollover	60	18	36	30	26	34
Parked Vehicle	48	56	36	30	39	42
Pedalcyclist	7	1	2	5	1	3
Pedestrian	5	6	6	5	2	5
Railroad Train	1	0	0	0	0	0
Rollover	0	25	6	14	4	10
Vehicle on Other Road	1	3	0	1	3	2
Missing Data	5	4	0	0	2	2
Total Crashes	627	605	553	555	578	584

Table 10: Vehicles in Crashes by Vehicle Type in Grant County, 2014-2018

Vehicle Type ¹	Vehicles in Crashes by Vehicle Type					5-Year Average
	2014	2015	2016	2017	2018	
Bus	4	2	0	1	1	2
Motorcycle	19	17	17	29	14	19
Passenger	356	344	342	369	400	362
Pedalcyclist	7	1	2	5	1	3
Pedestrian	5	7	8	5	3	6
Pickup	228	258	226	203	220	227
Semi	44	23	27	29	15	28
Van/SUV/4WD	180	174	168	166	176	173
Other Vehicle	33	77	18	7	27	32
Missing Data	85	48	40	29	27	46
Total Vehicles	961	951	848	843	884	897

¹ Pedestrians and pedalcyclists are counted as non-motorized vehicles, when involved in a crash with a motor vehicle. See Page 17 for data on drivers of non-motorized vehicles in crashes (i.e. pedestrians and pedalcyclists).

Table 11: Motor Vehicle Drivers in Crashes by Vehicle Type and Age Group in Grant County, 2018

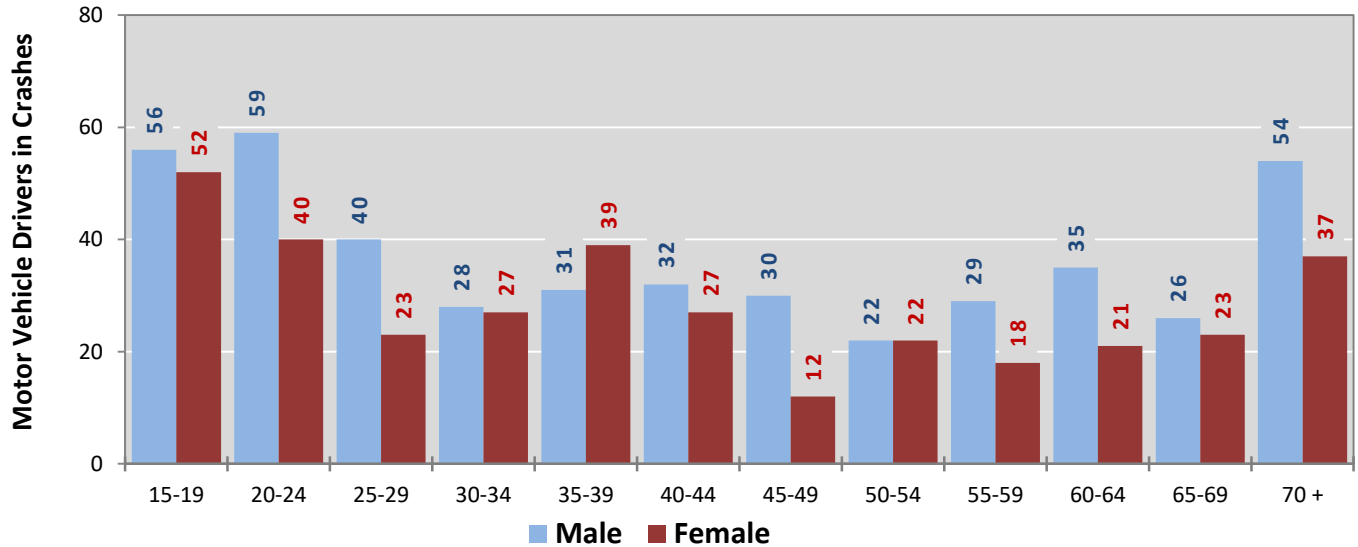
Age Groups	Motor Vehicle ¹ Drivers by Vehicle Type and Age Group								Total Drivers
	Bus	Motor-cycle	Passenger	Pickup	Semi	Van 4WD SUV	Other Vehicle	Missing Data	
15-19	0	0	58	27	1	18	4	0	108
20-24	0	0	65	19	2	9	3	1	99
25-29	0	0	36	16	1	12	0	0	65
30-34	0	1	23	13	0	17	1	0	55
35-39	0	3	30	14	1	21	1	0	70
40-44	0	2	27	12	1	14	4	0	60
45-49	0	1	18	19	1	5	0	0	44
50-54	0	0	20	11	1	10	2	0	44
55-59	0	1	11	16	2	13	2	2	47
60-64	1	2	21	13	4	10	5	0	56
65-69	0	1	20	14	0	13	1	0	49
70 +	0	3	41	25	1	21	2	0	93
Missing Data	0	0	30	21	0	13	2	24	90
Total Drivers	1	14	400	220	15	176	27	27	880

Table 12: Alcohol-involved Motor Vehicle Drivers in Crashes by Vehicle Type and Age Group in Grant County, 2018

Age Groups	Alcohol-involved Motor Vehicle ¹ Drivers by Vehicle Type and Age Group								Total Drivers
	Bus	Motor-cycle	Passenger	Pickup	Semi	Van 4WD SUV	Other Vehicle	Missing Data	
15-19	0	0	1	0	0	0	0	0	1
20-24	0	0	3	1	0	1	0	0	5
25-29	0	0	2	0	0	0	0	0	2
30-34	0	0	1	0	0	0	0	0	1
35-39	0	0	1	2	0	0	0	0	3
40-44	0	0	1	0	0	0	0	0	1
45-49	0	0	0	0	0	0	0	0	0
50-54	0	0	0	0	0	0	0	0	0
55-59	0	0	1	1	0	0	0	1	3
60-64	0	0	0	0	0	0	0	0	0
65-69	0	0	0	1	0	1	0	0	2
70 +	0	0	0	0	0	0	0	0	0
Missing Data	0	0	0	1	0	0	0	0	1
Total Drivers	0	0	10	6	0	2	0	1	19

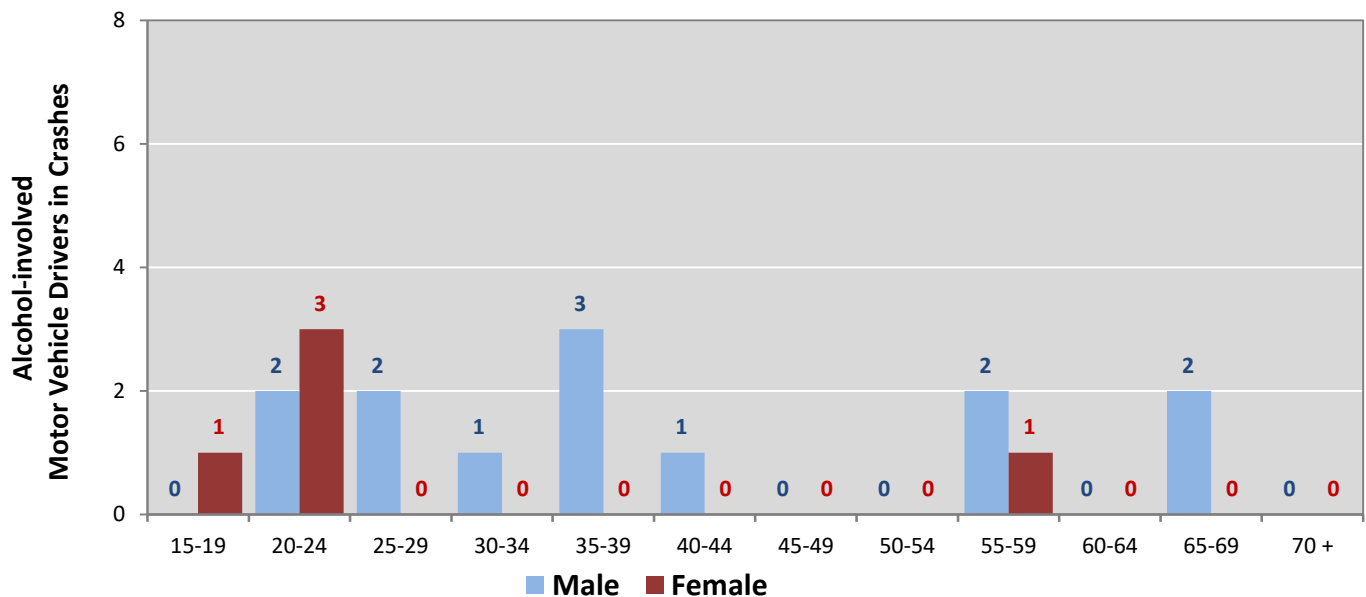
¹ See Page 17 for data on drivers of non-motorized vehicles in crashes (i.e. pedestrians and pedalcyclists).

Figure 6: Motor Vehicle Drivers in Crashes by Age Group and Sex in Grant County, 2018



* In 2018, Grant County had 97 drivers in crashes for which age or sex data were missing.

Figure 7: Alcohol-involved Motor Vehicle Drivers in Crashes by Age Group and Sex in Grant County, 2018



* In 2018, Grant County had 1 drivers in crashes for which age or sex data were missing.

Table 13: Alcohol-involved Motor Vehicle Drivers Under 21 (Ages 15-20) in Crashes in Grant County, 2014-2018

Age ¹	Year					5-Year Total
	2014	2015	2016	2017	2018	
15	0	0	0	0	0	0
16	0	1	1	0	0	2
17	0	0	1	0	0	1
18	3	0	1	0	0	4
19	0	0	1	0	1	2
20	0	1	1	0	0	2
Total Drivers	3	2	5	0	1	11

Table 14: Motor Vehicle Drivers Under 21 (Ages 15-20) in Crashes by Age, Sex and Alcohol-involvement in Grant County, 2018

Age ¹	Total Drivers				Alcohol-involved Drivers			
	Sex		Total Drivers	Percent of Total	Sex		Total Drivers	Percent of Total
	Male	Female			Male	Female		
15	2	1	3	2%	0	0	0	0%
16	7	11	18	14%	0	0	0	0%
17	10	11	21	16%	0	0	0	0%
18	21	13	34	26%	0	0	0	0%
19	16	16	32	24%	0	1	1	100%
20	12	13	25	19%	0	0	0	0%
Total Drivers	68	65	133	100%	0	1	1	100%

¹ For analysis of drivers under age 21, when the driver age or sex are not identified on the crash report (typically hit-and-run drivers), the driver data are considered unreliable and are excluded from the analysis.

**Table 15: Frequency of Contributing Factors in Crashes
by Crash Severity in Grant County, 2018**

Contributing Factors	Frequency of Contributing Factor ¹ by Crash Severity			
	Frequency in Fatal Crashes	Frequency in Injury Crashes	Frequency in Property Damage Only Crashes	Frequency in All Crashes
Human	3	181	372	556
Driver Inattention	0	53	106	159
Following Too Closely	0	24	53	77
Other Improper Driving	0	15	28	43
Failed to Yield Right of Way	0	8	31	39
Excessive Speed	0	23	14	37
Speed Too Fast for Conditions	0	12	19	31
Improper Backing	0	0	25	25
Avoid No Contact - Vehicle	1	6	16	23
Drove Left Of Center	0	6	16	22
Alcohol Involved	1	6	12	19
Made Improper Turn	0	6	10	16
Improper Lane Change	0	3	8	11
Improper Overtaking	0	3	8	11
Passed Stop Sign	0	3	6	9
Avoid No Contact - Other	0	1	7	8
Disregarded Traffic Signal	0	4	4	8
Cell Phone	0	2	2	4
Pedestrian Error	0	4	0	4
Drug Involved	1	1	2	4
Vehicle Skidded Before Brake	0	1	2	3
Driverless Moving Vehicle	0	0	2	2
High Speed Pursuit	0	0	1	1
Failed to Yield to Emergency Vehicle	0	0	0	0
Failed to Yield to Police Vehicle	0	0	0	0
Texting	0	0	0	0
Vehicle	0	1	9	10
Other Mechanical Defect	0	0	6	6
Defective Tires	0	1	1	2
Inadequate Brakes	0	0	2	2
Defective Steering	0	0	0	0
Environment	0	1	2	3
Road Defect	0	1	2	3
Low Visibility Due to Smoke	0	0	0	0
Traffic Control Not Functioning	0	0	0	0
Other	1	108	394	503
None	0	79	265	344
Other - No Driver Error	1	29	129	159

¹ Multiple contributing factors may be reported for any vehicle in a crash.

Table 16: People in Crashes by Crash Classification and Severity of Injuries in Grant County, 2018

Crash Classification	People in Crashes by Severity of Injuries					Total People
	Fatalities (Class K)	Suspected Serious Injuries (Class A)	Suspected Minor Injuries (Class B)	Possible Injuries (Class C)	No Apparent Injuries (Class O)	
Animal	0	2	4	10	240	256
Fixed Object	0	5	15	9	70	99
Other (Non-Collision)	0	0	3	2	16	21
Other (Object)	0	0	0	3	17	20
Other Vehicle	1	2	9	94	519	625
Overturn/Rollover	0	1	11	11	23	46
Parked Vehicle	0	0	1	0	84	85
Pedalcyclist	0	0	0	1	1	2
Pedestrian	0	0	1	2	2	5
Railroad Train	0	0	0	0	0	0
Rollover	0	0	4	3	1	8
Vehicle on Other Road	0	0	0	1	4	5
Missing Data	0	0	0	0	5	5
Total People	1	10	48	136	982	1,177

Table 17: Killed or Injured Unbelted People in Crashes by Sex and Age Group in Grant County, 2018

Age Groups	Unbelted People Killed or Injured ^{1,2}				Total People
	Male	Percent of Male	Female	Percent of Female	
0-4	0	0%	0	0%	0
5-9	1	20%	0	0%	1
10-14	0	0%	0	0%	0
15-19	0	0%	1	50%	1
20-24	0	0%	0	0%	0
25-29	1	20%	0	0%	1
30-34	0	0%	0	0%	0
35-39	1	20%	0	0%	1
40-44	0	0%	0	0%	0
45-49	0	0%	0	0%	0
50-54	0	0%	0	0%	0
55-59	0	0%	1	50%	1
60-64	1	20%	0	0%	1
65-69	0	0%	0	0%	0
70 +	1	20%	0	0%	1
Missing Data	0	0%	0	0%	0
Total People	5	100%	2	100%	7

¹ People injured are in one of three categories: suspected serious injury, suspected minor injury, or possible injury.

² Excludes people in or on buses, heavy trucks, motorcycles, or ATVs.

Figure 8: Seatbelt Use by People in Crashes with Fatal or Suspected Serious Injuries in Grant County, 2014-2018

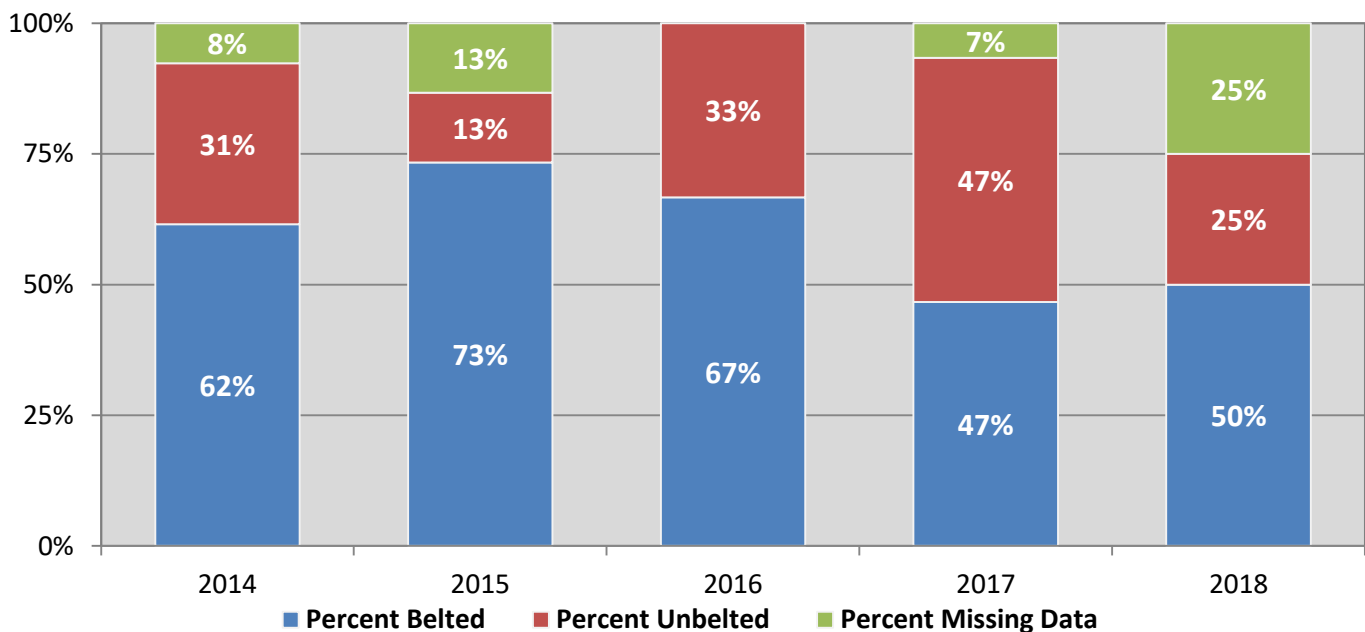
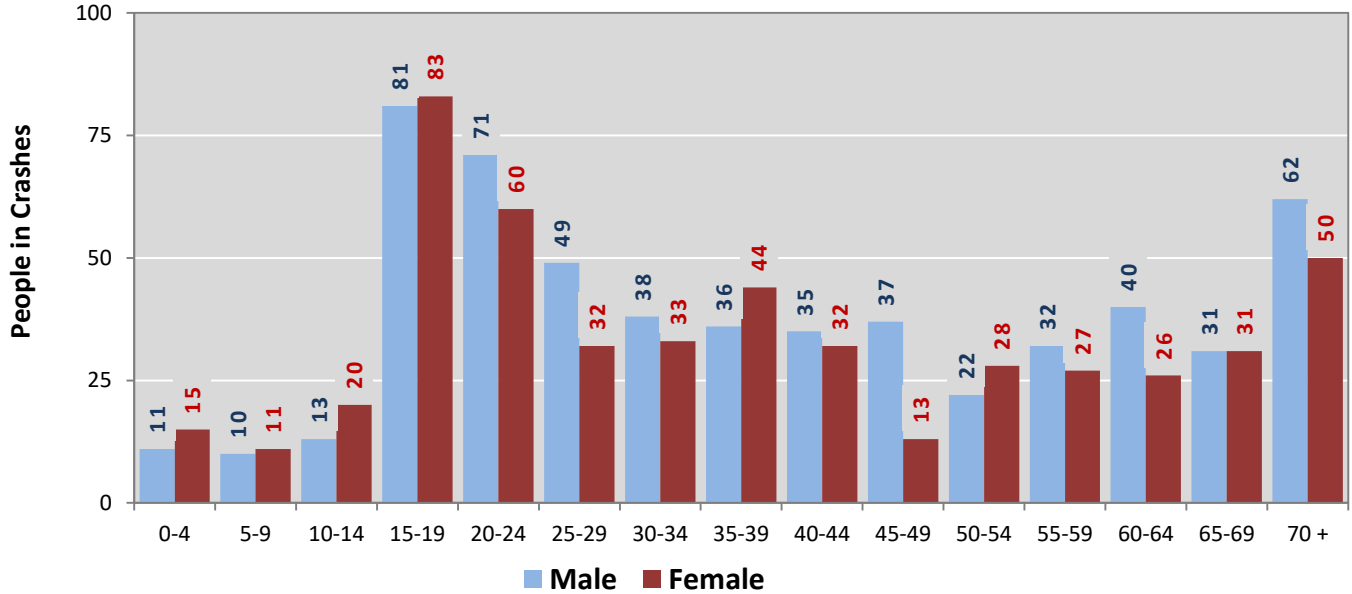
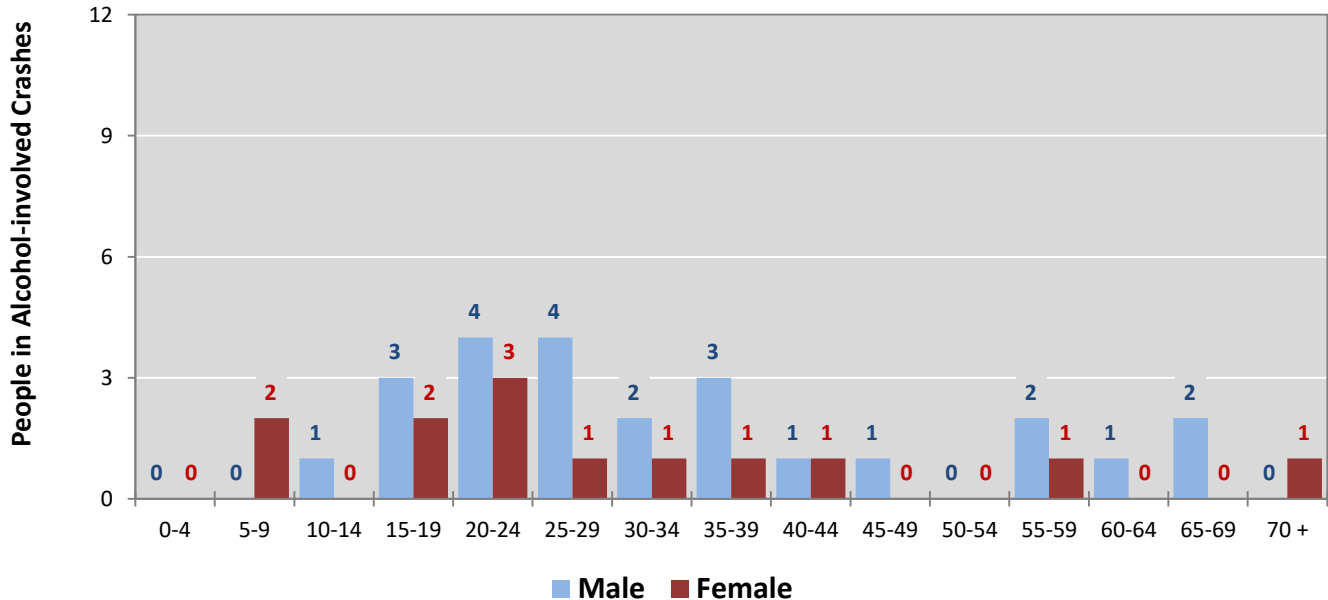


Figure 9: People in Crashes by Age Group and Sex in Grant County, 2018



* In 2018, Grant County had 104 people in crashes for which age or sex data were missing.

Figure 10: People in Alcohol-involved Crashes by Age Group and Sex in Grant County, 2018



* In 2018, Grant County had 8 people in alcohol-involved crashes for which age or sex data were missing.

Table 18: Pedestrians and Pedalcyclists in Crashes by Age Group in Grant County, 2014-2018

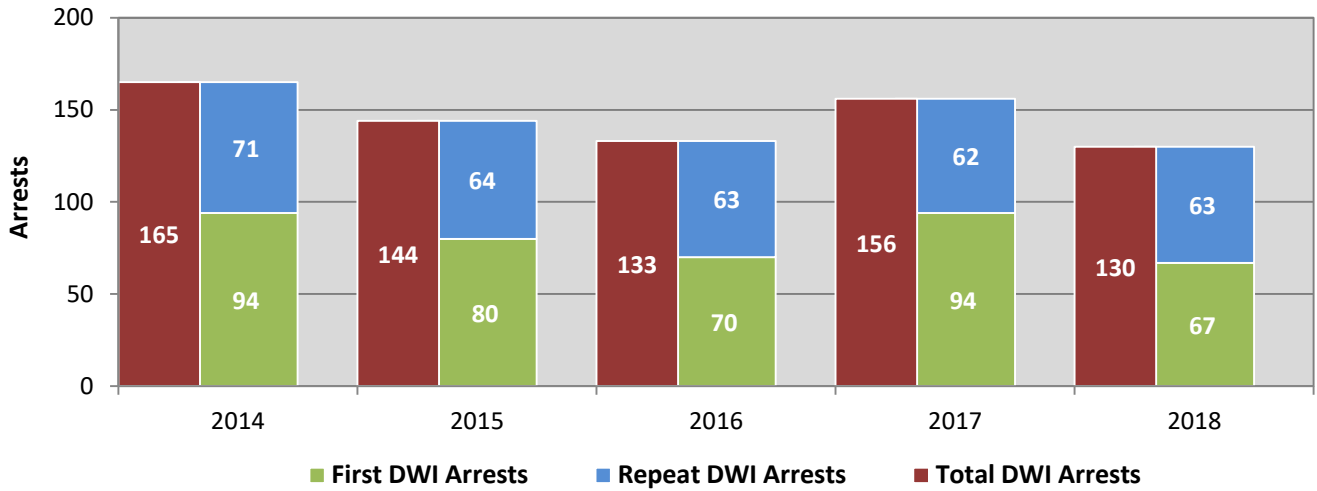
Age Groups	Pedestrians and Pedalcyclists ¹ in Crashes					5-Year Total People
	2014	2015	2016	2017	2018	
0-4	0	0	0	0	0	0
5-9	0	1	1	0	1	3
10-14	0	0	0	0	0	0
15-19	1	1	0	1	0	3
20-24	0	1	3	1	0	5
25-29	4	1	0	1	0	6
30-34	2	0	0	1	0	3
35-39	1	0	2	0	1	4
40-44	1	0	0	3	0	4
45-49	0	0	0	0	1	1
50-54	0	1	1	1	0	3
55-59	1	1	0	0	0	2
60-64	0	1	0	1	0	2
65-69	0	0	2	0	0	2
70 +	0	1	1	0	1	3
Missing Data	2	0	0	1	0	3
Total People	12	8	10	10	4	44

Table 19: Pedestrians and Pedalcyclists in Crashes by Alcohol Involvement and Severity of Injuries in Grant County, 2018

Alcohol Involvement	Pedestrians and Pedalcyclists ¹ in Crashes					Total People
	Fatalities (Class K)	Suspected Serious Injuries (Class A)	Suspected Minor Injuries (Class B)	Possible Injuries (Class C)	No Apparent Injury (Class O)	
Total Pedalcyclists	0	0	0	1	0	1
Involved	0	0	0	0	0	0
Not Involved	0	0	0	1	0	1
Total Pedestrians	0	0	1	2	0	3
Involved	0	0	0	0	0	0
Not Involved	0	0	1	2	0	3
Total People	0	0	1	3	0	4

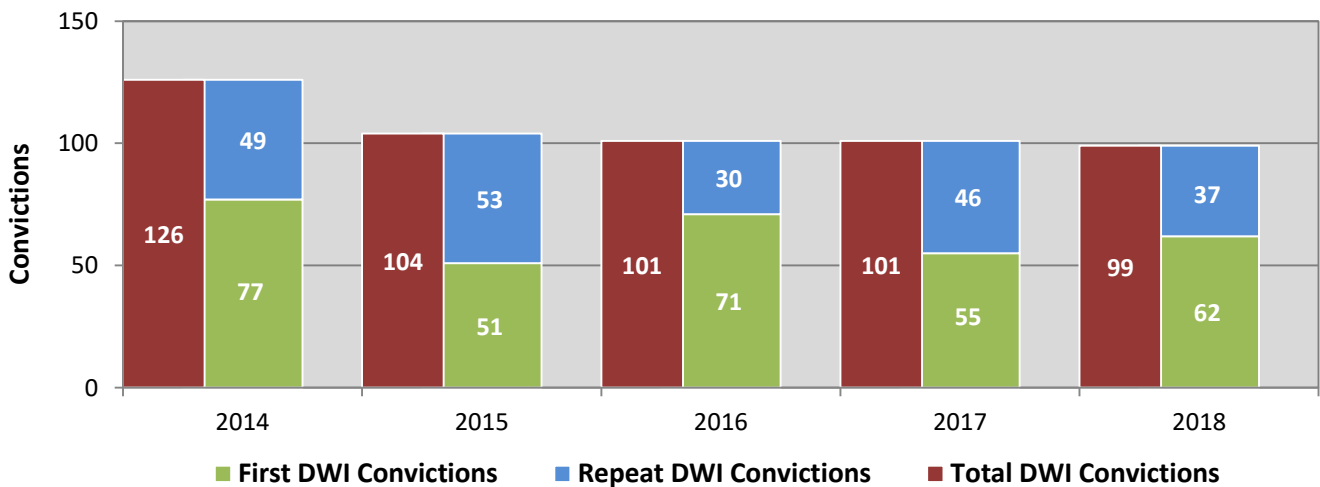
¹ Pedestrians and pedalcyclists are counted as non-motorized vehicles, when involved in a crash with a motor vehicle.

**Figure 11: DWI Arrests in Grant County,
Showing First and Repeat DWI Arrests, 2014-2018**



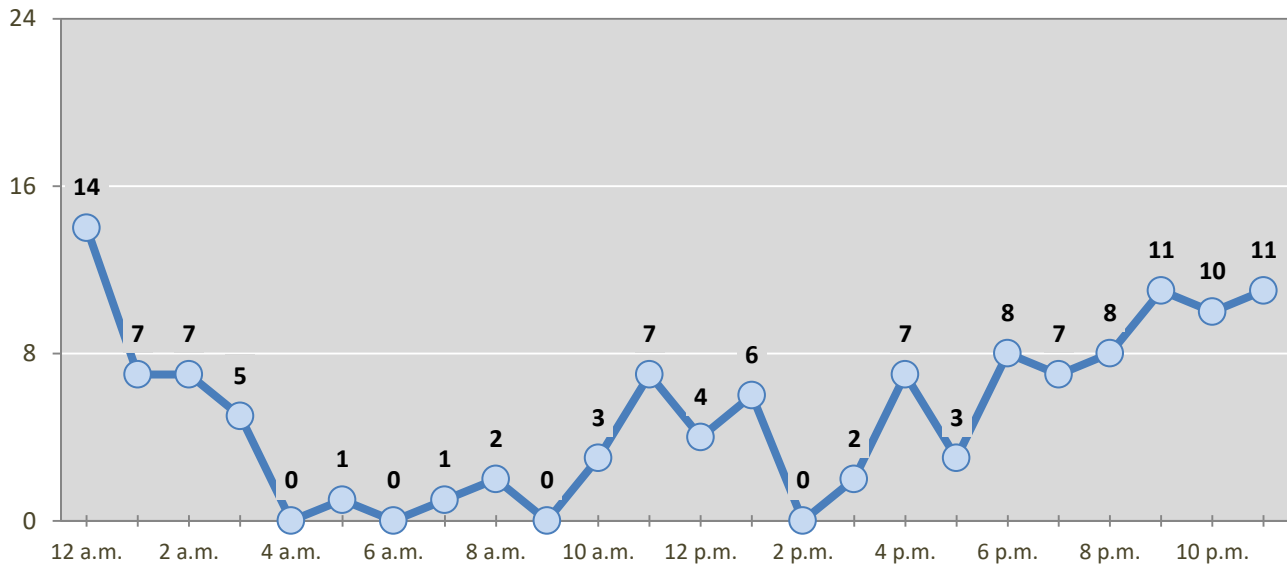
*Values are based upon the year of the arrest.

**Figure 12: DWI Convictions in Grant County,
Showing First and Repeat DWI Convictions, 2014-2018**



*Values are based upon the year of the conviction.

Figure 13: DWI Arrests by Hour in Grant County, 2018



* In 2018, Grant County had 6 arrests for which hour data were missing.

Table 20: DWI Arrests by Day of Week in Grant County, 2014-2018

Day of Week	Year					5-Year Average
	2014	2015	2016	2017	2018	
Sunday	28	34	26	33	29	30
Monday	19	8	15	19	8	14
Tuesday	19	11	14	13	14	14
Wednesday	17	15	11	17	15	15
Thursday	17	17	12	16	19	16
Friday	27	23	26	20	19	23
Saturday	38	36	29	38	26	33
Total Arrests	165	144	133	156	130	146

Table 21: Driver First DWI Arrests by Age Group in Grant County, 2014-2018

Age Groups	Driver First DWI Arrests ¹				
	2014	2015	2016	2017	2018
15-19	8	4	12	7	4
20-24	27	21	17	23	18
25-29	10	17	9	22	11
30-34	8	14	8	8	6
35-39	10	5	4	11	6
40-44	10	3	8	6	7
45-49	7	4	4	4	2
50-54	4	2	3	5	4
55-59	5	3	4	2	7
60-64	4	3	0	4	0
65-69	0	0	0	0	1
70 +	1	3	0	2	1
Missing Data	0	1	1	0	0
Total Drivers	94	80	70	94	67

¹ Values are based upon the year of the arrest.

Table 22: Driver Repeat DWI Arrests by Age Group in Grant County, 2014-2018

Age Groups	Driver Repeat DWI Arrests ¹				
	2014	2015	2016	2017	2018
15-19	0	0	1	3	0
20-24	8	4	4	7	4
25-29	13	12	7	6	1
30-34	11	10	2	12	7
35-39	7	10	11	3	12
40-44	10	6	11	7	7
45-49	5	7	9	4	9
50-54	10	4	6	7	7
55-59	3	6	3	4	6
60-64	1	3	6	3	3
65-69	2	1	3	5	5
70 +	1	1	0	1	2
Missing Data	0	0	0	0	0
Total Drivers	71	64	63	62	63

¹ Values are based upon the year of the arrest.

Table 23: Driver First DWI Convictions by Age Group in Grant County, 2014-2018

Age Groups	Driver First DWI Convictions ¹				
	2014	2015	2016	2017	2018
15-19	5	4	7	6	2
20-24	23	12	20	14	20
25-29	11	18	7	10	9
30-34	7	7	7	7	3
35-39	6	2	11	5	5
40-44	8	2	6	5	5
45-49	4	2	3	3	3
50-54	4	2	3	1	2
55-59	5	1	5	2	6
60-64	2	1	2	2	4
65-69	1	0	0	0	1
70 +	1	0	0	0	2
Missing Data	0	0	0	0	0
Total Drivers	77	51	71	55	62

¹ Values are based upon the year of the conviction.

Table 24: Driver Repeat DWI Convictions by Age Group in Grant County, 2014-2018

Age Groups	Driver Repeat DWI Convictions ¹				
	2014	2015	2016	2017	2018
15-19	0	0	0	3	0
20-24	4	3	3	2	2
25-29	10	11	3	4	2
30-34	6	11	1	6	5
35-39	5	5	4	5	5
40-44	8	7	3	7	5
45-49	3	4	7	4	4
50-54	8	7	3	7	5
55-59	1	3	3	1	3
60-64	1	1	1	3	2
65-69	3	1	1	4	4
70 +	0	0	1	0	0
Missing Data	0	0	0	0	0
Total Drivers	49	53	30	46	37

¹ Values are based upon the year of the conviction.

Table 25: Court Disposition of DWI Arrests for Grant County and the State, 2018

Court Disposition of DWI Arrest ¹	Grant County	Statewide	Percent of Statewide
Total DWI Arrests	130	10,205	1.3%
DWI Arrests Resulting in Convictions	80	4,641	1.7%
DWI Arrests Resulting in Dismissals ²	8	880	0.9%
DWI Arrests Awaiting Disposition	42	4,684	0.9%

¹ These are the number of DWI arrests in 2018 and whether the case resulted in a conviction or dismissal, or is still awaiting court disposition, as reported in the NM MVD Citation Tracking System (CTS) as of July 2019.

² For this table, a very small number of "not guilty" rulings may be included in the category Dismissals.

Table 26: Average Number of Days from Date of DWI Arrest to Date of Court Disposition in Grant County and the State, 2018

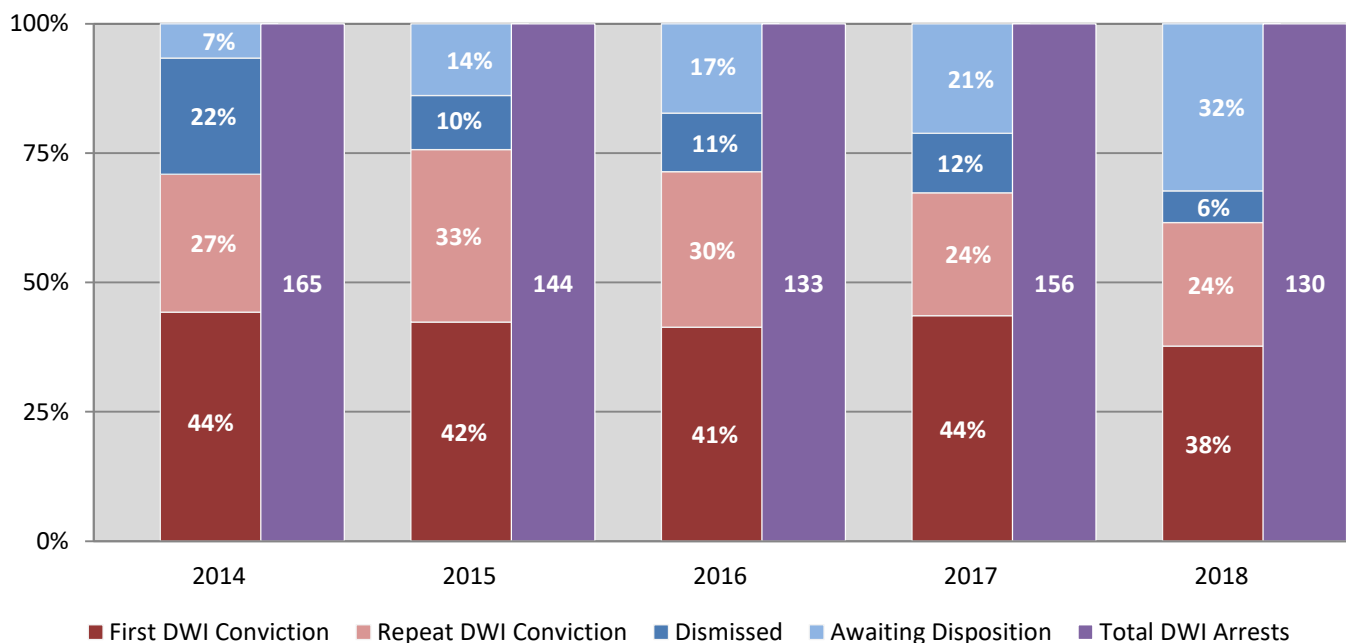
Court Disposition	Average Number of Days		Deviation from Statewide Average
	Grant County	Statewide	
DWI Conviction	119	145	-27
DWI Dismissal	121	153	-32

Table 27 Court Disposition of DWI Arrests in Grant County, 2014-2018

Year of DWI Arrest ¹	Court Disposition				Total DWI Arrests
	First DWI Conviction	Repeat DWI Conviction	Dismissed	Awaiting Disposition	
2014	73	44	37	11	165
2015	61	48	15	20	144
2016	55	40	15	23	133
2017	68	37	18	33	156
2018	49	31	8	42	130

¹ Values are based upon the year of the arrest.

Figure 14: Court Dispositions by Percentage of DWI Arrests in Grant County, 2014-2018



*Table 27 contains the values used to calculate percentages shown in Figure 14.