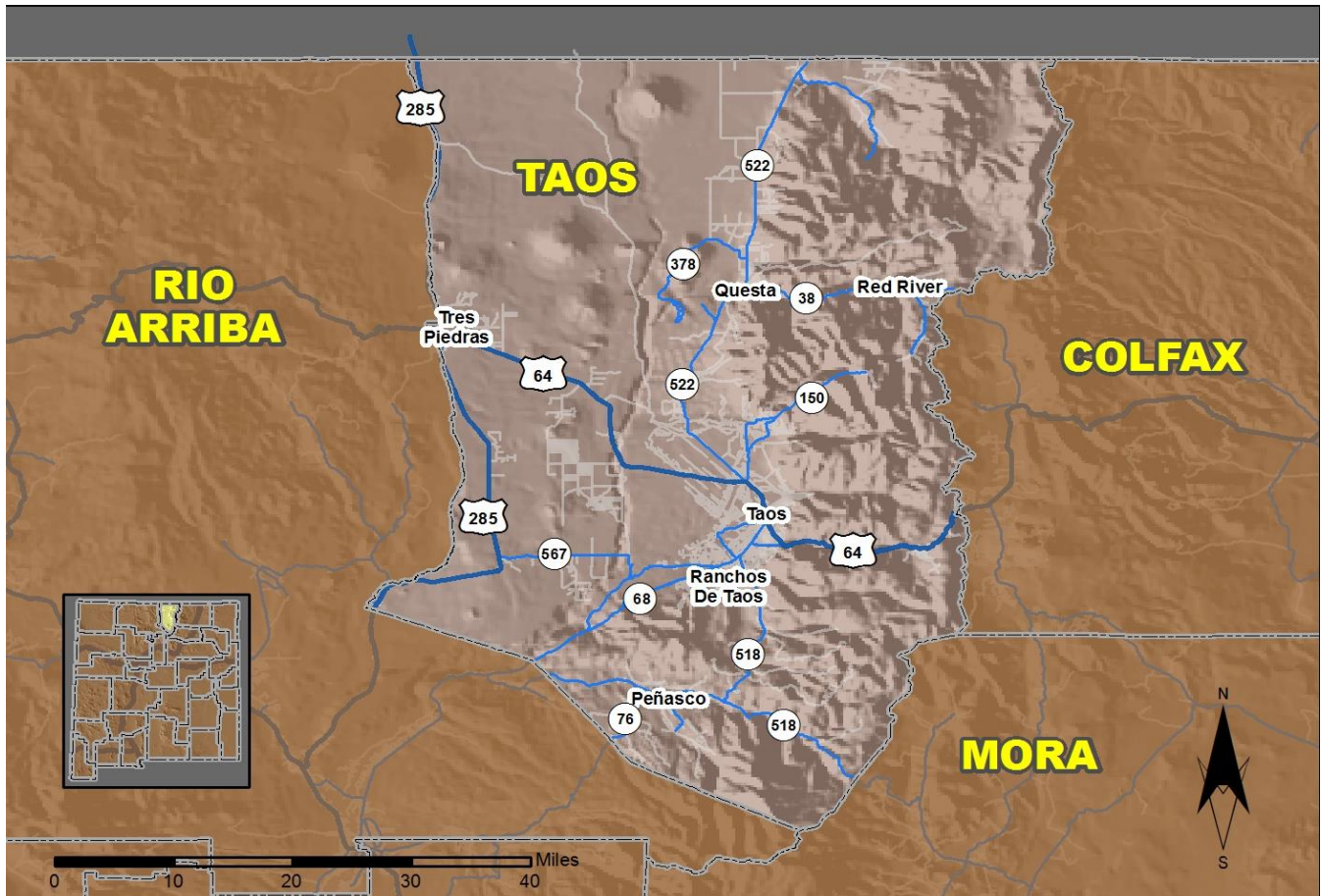


2018 Community Report

Taos County



Produced for the New Mexico Department of Transportation,
Traffic Safety Division, Traffic Records Bureau,
Under Contract 6093 by the University of New Mexico,
Geospatial and Population Studies, Traffic Research Unit

Distributed in compliance with New Mexico Statute 66-7-214
as a reference source regarding New Mexico traffic crashes

For the purposes of this report, data are compiled by the University of New Mexico, Geospatial and Population Studies, Traffic Research Unit (TRU), on behalf of the New Mexico Department of Transportation (NMDOT). Data in this report may differ from that in other data sources, such as the Federal Fatality Analysis Reporting System (FARS), due to the timing of publications and rules for how data are compiled and maintained in Federal vs. State databases. If you have questions regarding this report, please contact the Traffic Safety Division at 505-827-0427.

<https://gps.unm.edu/tru/crash-reports/community-reports>

Definitions

Aggravated DWI – A driver arrested for 1) driving with a BAC of 0.16 or higher, 2) driving under the influence of alcohol or drugs and causing bodily injury to a human being as a result, or 3) driving under the influence of alcohol or drugs and refusing to submit to a BAC test at the time of arrest for DWI.

Alcohol-involved Crash – A crash for which the Uniform Crash Report indicated that 1) a DWI citation was issued, 2) alcohol was a contributing factor, or 3) a person in control of a vehicle (including a pedestrian or pedalcyclist) was suspected of being under the influence of alcohol.

Alcohol-involved Driver – A person in control of a vehicle who was cited for DWI or indicated on the Uniform Crash Report as being either suspected or determined by testing to be under the influence of alcohol. There can be multiple alcohol-involved drivers in a single alcohol-involved crash.

Crash – A reported incident on a public roadway involving one or more motor vehicles that resulted in death, personal injury, or at least \$500 in property damage. Crashes on private property (such as a parking lot) are not included.

DWI Arrest (Citation) – In this report, a DWI arrest (a.k.a. a DWI citation) is a driver arrested for either DWI or aggravated DWI. New Mexico's legal limit for presumption of driving while intoxicated (DWI) is 0.08 for non-commercial drivers older than 21 years of age, 0.04 for commercial vehicle drivers, and 0.02 for drivers younger than 21 years of age.

DWI Conviction – A driver convicted of driving under the intoxicating influence of alcohol, narcotics, or pathogenic drugs, including aggravated DWI.

Fatal Crash – A crash in which at least one person was killed. More than one person can be killed in a single fatal crash.

Fatalities – The number of people killed in a crash. The terms “killed” and “deaths” are synonymous with “fatalities.” A fatality is crash-related if it occurs at the time of the crash or if the person(s) involved in the crash dies within 30 days.

Injury Crash – A reported crash in which at least one person was injured. Injury crashes involve at least one suspected serious injury (Class A), suspected minor injury (Class B), or possible injury (Class C). Fatal crashes are not included.

Missing Data – An indication that the applicable field on the UCR form was left blank or contained an invalid code. Starting with crashes that occurred in 2012, improvements in the identification of missing data in the NMDOT crash database led to an increase in the reported amount of missing data.

Pedalcyclist – A person riding a mechanism of transport that is powered solely by pedals (a.k.a. bicyclist).

Pedestrian – A person on foot, walking, running, jogging, hiking, sitting or lying down who is involved in a motor vehicle traffic crash.

Sources

Crash Data – New Mexico Department of Transportation, Traffic Safety Division, Traffic Records Bureau, Traffic Crash Database, as of the report date below. Crash data are compiled using NMDOT Uniform Crash Reports (UCR), submitted by law enforcement agencies in the state, for any incident on a public roadway involving one or more motor vehicles that resulted in death, injury, or at least \$500 in property damage. These reports are processed by the NMDOT Traffic Records Bureau and analyzed by the University of New Mexico, Geospatial and Population Studies, Traffic Research Unit (TRU).

DWI Citation Tracking System (CTS) – New Mexico Taxation and Revenue Department (NM TRD), Motor Vehicle Division (MVD), DWI Citation Tracking System (CTS), as of July 2019. Repeat offenders are identified by the combination of account key, arrest date, and citation number. County data are based upon the county where the arrest took place. City data are based upon the city where the offender resides.

Urban Areas – Areas defined by the New Mexico Department of Transportation, Asset Management and Planning, 2010 U.S. Census Urbanized Area Boundaries, NMDOT-Adjusted, and U.S. Census Urban Clusters, August 21, 2013. Urban areas for crash years 2013-2017 include a 1/2 mile buffer extending out from those urban boundaries. In crashes before 2013, “urban” was defined as a town or city with a population of at least 2,500 people.

**Table 1: Total Crashes and Alcohol-involved Crashes by
Crash Severity in Taos County, 2009-2018**

Year	Total Crashes				Alcohol-involved Crashes			
	Fatal	Injury	Property Damage Only	Total	Fatal	Injury	Property Damage Only	Total
2009	8	231	514	753	6	30	28	64
2010	11	213	560	784	5	36	28	69
2011	7	210	483	700	5	29	30	64
2012	8	159	408	575	4	12	30	46
2013	6	77	289	372	3	6	11	20
2014	10	78	239	327	6	9	7	22
2015	2	81	274	357	2	9	5	16
2016	8	116	261	385	5	6	6	17
2017	8	179	448	635	3	17	14	34
2018	9	177	461	647	6	25	14	45

**Figure 1: Alcohol-involved Fatal and Injury Crashes Compared to
Non-alcohol-involved Fatal and Injury Crashes in Taos County, 2009-2018**

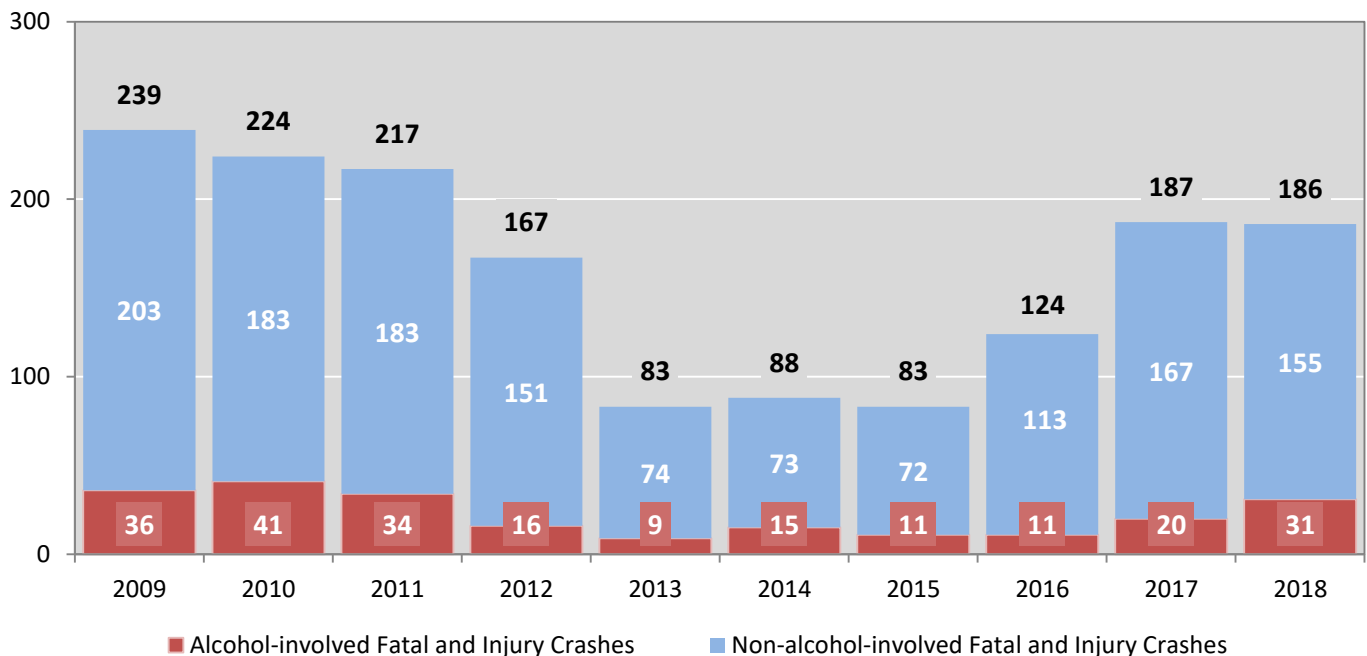


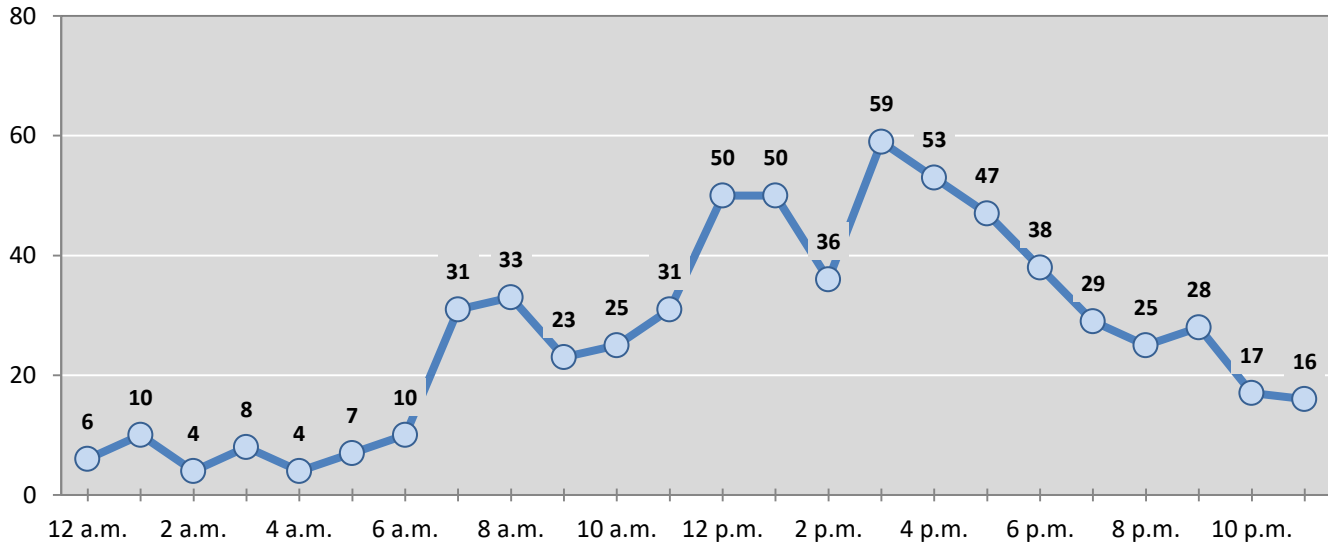
Table 2: Crashes by Month in Taos County, 2014-2018

Month	Crashes					5-Year Average
	2014	2015	2016	2017	2018	
January	36	27	40	40	57	40
February	19	24	33	45	45	33
March	29	29	28	54	45	37
April	13	18	30	41	43	29
May	10	16	18	49	58	30
June	26	44	29	46	34	36
July	28	32	32	60	40	38
August	30	27	35	56	50	40
September	31	34	30	50	62	41
October	31	41	41	67	60	48
November	34	28	27	59	70	44
December	40	37	42	68	83	54
Total Crashes	327	357	385	635	647	470

Table 3: Alcohol-involved Crashes by Month in Taos County, 2014-2018

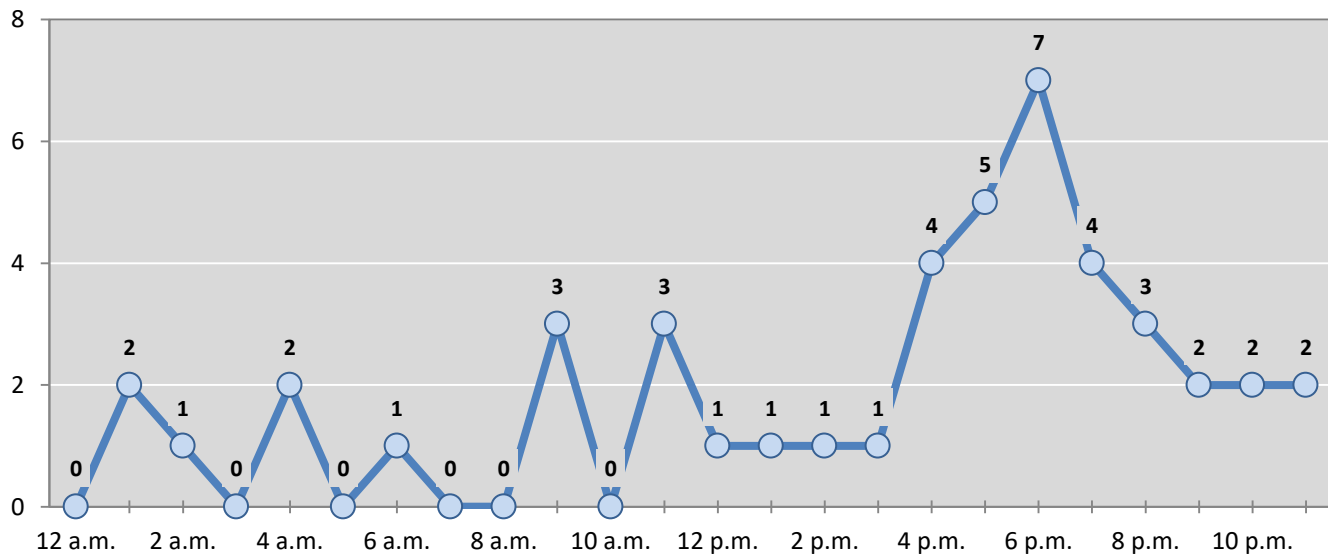
Month	Alcohol-involved Crashes					5-Year Average
	2014	2015	2016	2017	2018	
January	0	1	1	0	6	2
February	1	1	0	3	3	2
March	3	3	2	4	6	4
April	0	2	1	3	2	2
May	0	1	0	4	3	2
June	2	0	1	3	2	2
July	5	0	2	2	1	2
August	2	0	3	5	2	2
September	4	2	0	1	6	3
October	2	4	2	2	4	3
November	3	2	2	6	6	4
December	0	0	3	1	4	2
Total Crashes	22	16	17	34	45	27

Figure 2: Crashes by Hour in Taos County, 2018



* In 2018, Taos County had 7 crashes for which hour data were missing.

Figure 3: Alcohol-involved Crashes by Hour in Taos County, 2018



* In 2018, Taos County had 0 alcohol-involved crashes for which hour data were missing.

Table 4: Alcohol-involved Crashes by Day of Week in Taos County, 2014-2018

Day of Week	Alcohol-involved Crashes					5-Year Average
	2014	2015	2016	2017	2018	
Sunday	5	1	3	3	7	4
Monday	2	3	1	8	10	5
Tuesday	3	1	2	5	1	2
Wednesday	1	2	3	4	10	4
Thursday	5	0	1	5	3	3
Friday	3	4	5	6	6	5
Saturday	3	5	2	3	8	4
Total Crashes	22	16	17	34	45	27

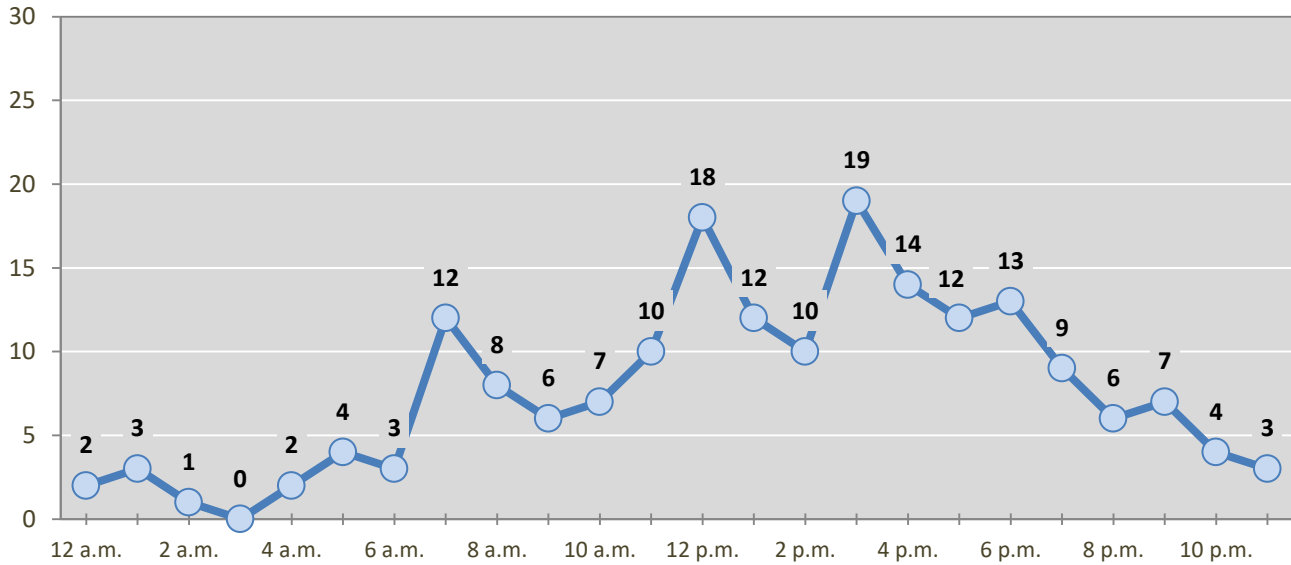
Table 5: Fatal and Injury Crashes by Day of Week in Taos County, 2014-2018

Day of Week	Fatal and Injury Crashes					5-Year Average
	2014	2015	2016	2017	2018	
Sunday	6	7	11	20	22	13
Monday	13	11	19	27	27	19
Tuesday	16	15	21	28	24	21
Wednesday	13	10	19	25	26	19
Thursday	15	12	25	19	20	18
Friday	13	13	13	42	27	22
Saturday	12	15	16	26	40	22
Total Crashes	88	83	124	187	186	134

Table 6: Pedestrian and Pedalcyclist Crashes by Day of Week in Taos County, 2014-2018

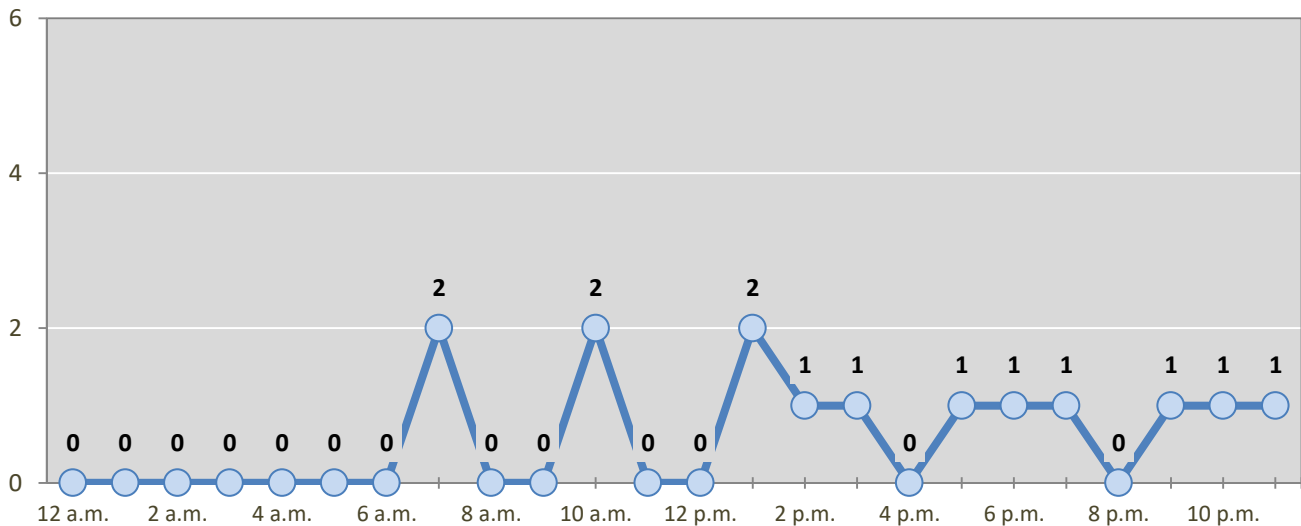
Day of Week	Pedestrian and Pedalcyclist Crashes					5-Year Average
	2014	2015	2016	2017	2018	
Sunday	0	1	0	2	1	1
Monday	1	0	1	0	3	1
Tuesday	2	2	2	0	3	2
Wednesday	2	3	1	2	1	2
Thursday	2	3	2	1	2	2
Friday	1	2	2	3	1	2
Saturday	0	1	2	1	3	1
Total Crashes	8	12	10	9	14	11

Figure 4: Fatal and Injury Crashes by Hour in Taos County, 2018



* In 2018, Taos County had 1 crashes for which hour data were missing.

Figure 5: Pedestrian and Pedalcyclist Crashes by Hour in Taos County, 2018



* In 2018, Taos County had 0 crashes for which hour data were missing.

Table 7: Severity of Injuries to People in Crashes by Rural and Urban Location in Taos County, 2018

Urban and Rural Locations by Alcohol-involvement	People in Crashes by Severity of Injuries					Total People
	Fatalities (Class K)	Suspected Serious Injuries (Class A)	Suspected Minor Injuries (Class B)	Possible Injuries (Class C)	No Apparent Injuries (Class O)	
People in Alcohol-involved Crashes	6	4	16	18	42	86
Urban	0	1	6	6	28	41
Rural Non-Interstate	6	3	10	12	14	45
Rural Interstate	0	0	0	0	0	0
People in Crashes	9	14	77	153	1,234	1,487
Urban	2	5	37	98	844	986
Rural Non-Interstate	7	9	40	55	390	501
Rural Interstate	0	0	0	0	0	0
Percent in Alcohol-involved Crashes	67%	29%	21%	12%	3%	6%

Table 8: Total Crashes by Roadway System and Crash Severity in Taos County, 2014-2018

Crash Severity by System	Crashes by Year					5-Year Average
	2014	2015	2016	2017	2018	
Total Rural Interstate	0	0	0	0	0	0
Fatal Crash	0	0	0	0	0	0
Injury Crash	0	0	0	0	0	0
Property Damage Only Crash	0	0	0	0	0	0
Total Rural Non-Interstate	77	75	79	240	277	149
Fatal Crash	5	2	7	5	7	5
Injury Crash	10	13	13	74	76	37
Property Damage Only Crash	62	60	59	161	194	107
Total Urban	250	282	306	395	370	320
Fatal Crash	5	0	1	3	2	2
Injury Crash	68	68	103	105	101	89
Property Damage Only Crash	177	214	202	287	267	229

Table 9: Total Crashes by Crash Classification in Taos County, 2014-2018

Crash Classification	Total Crashes by Year					5-Year Average
	2014	2015	2016	2017	2018	
Animal	19	24	19	76	74	42
Fixed Object	40	36	37	77	91	56
Other (Non-Collision)	6	2	3	8	19	8
Other (Object)	4	12	4	11	16	9
Other Vehicle	217	240	287	371	356	294
Overturn/Rollover	18	2	12	63	52	29
Parked Vehicle	13	13	6	15	12	12
Pedalcyclist	4	8	4	4	7	5
Pedestrian	4	4	6	5	7	5
Railroad Train	0	0	0	0	1	0
Rollover	0	11	5	5	6	5
Vehicle on Other Road	0	5	1	0	4	2
Missing Data	2	0	1	0	2	1
Total Crashes	327	357	385	635	647	470

Table 10: Vehicles in Crashes by Vehicle Type in Taos County, 2014-2018

Vehicle Type ¹	Vehicles in Crashes by Vehicle Type					5-Year Average
	2014	2015	2016	2017	2018	
Bus	4	4	6	2	1	3
Motorcycle	9	5	11	23	15	13
Passenger	178	225	331	444	484	332
Pedalcyclist	4	8	5	5	7	6
Pedestrian	4	5	6	5	8	6
Pickup	125	159	182	269	225	192
Semi	13	19	7	34	16	18
Van/SUV/4WD	176	165	137	244	256	196
Other Vehicle	10	26	9	3	2	10
Missing Data	65	32	28	34	40	40
Total Vehicles	588	648	722	1,063	1,054	815

¹ Pedestrians and pedalcyclists are counted as non-motorized vehicles, when involved in a crash with a motor vehicle. See Page 17 for data on drivers of non-motorized vehicles in crashes (i.e. pedestrians and pedalcyclists).

Table 11: Motor Vehicle Drivers in Crashes by Vehicle Type and Age Group in Taos County, 2018

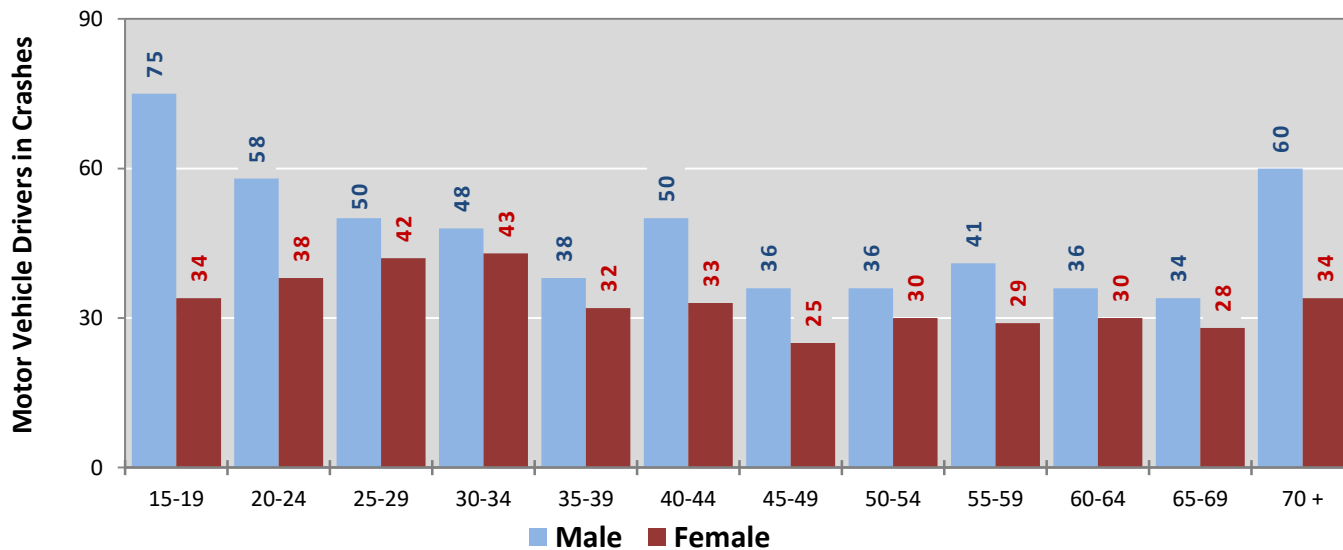
Age Groups	Motor Vehicle ¹ Drivers by Vehicle Type and Age Group								Total Drivers
	Bus	Motor-cycle	Passenger	Pickup	Semi	Van 4WD SUV	Other Vehicle	Missing Data	
15-19	0	1	59	20	0	27	0	2	109
20-24	0	1	61	16	0	17	0	1	96
25-29	1	1	42	18	0	27	0	3	92
30-34	0	1	46	12	2	30	0	0	91
35-39	0	0	32	13	4	20	0	1	70
40-44	0	0	31	18	3	27	0	4	83
45-49	0	3	20	19	2	15	1	2	62
50-54	0	3	29	10	3	21	0	0	66
55-59	0	2	33	19	1	14	0	2	71
60-64	0	1	31	17	0	15	0	2	66
65-69	0	1	32	17	0	10	1	1	62
70 +	0	1	47	25	0	20	0	1	94
Missing Data	0	0	21	21	1	13	0	21	77
Total Drivers	1	15	484	225	16	256	2	40	1,039

Table 12: Alcohol-involved Motor Vehicle Drivers in Crashes by Vehicle Type and Age Group in Taos County, 2018

Age Groups	Alcohol-involved Motor Vehicle ¹ Drivers by Vehicle Type and Age Group								Total Drivers
	Bus	Motor-cycle	Passenger	Pickup	Semi	Van 4WD SUV	Other Vehicle	Missing Data	
15-19	0	0	2	0	0	1	0	0	3
20-24	0	1	3	1	0	4	0	0	9
25-29	0	0	1	4	0	1	0	0	6
30-34	0	0	3	1	0	1	0	0	5
35-39	0	0	0	1	0	2	0	0	3
40-44	0	0	0	0	0	2	0	1	3
45-49	0	0	0	1	0	0	0	0	1
50-54	0	1	1	1	0	2	0	0	5
55-59	0	1	1	0	0	0	0	0	2
60-64	0	0	1	0	0	1	0	0	2
65-69	0	1	0	1	0	0	0	1	3
70 +	0	0	1	0	0	1	0	0	2
Missing Data	0	0	0	1	0	0	0	0	1
Total Drivers	0	4	13	11	0	15	0	2	45

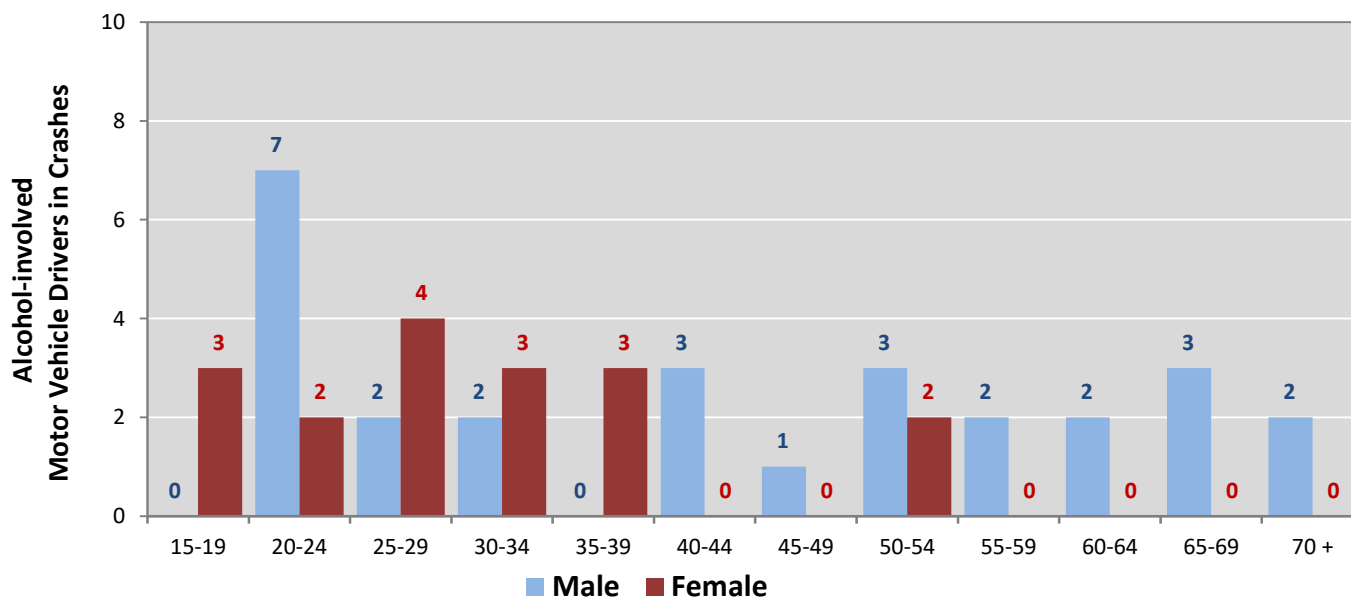
¹ See Page 17 for data on drivers of non-motorized vehicles in crashes (i.e. pedestrians and pedalcyclists).

Figure 6: Motor Vehicle Drivers in Crashes by Age Group and Sex in Taos County, 2018



* In 2018, Taos County had 79 drivers in crashes for which age or sex data were missing.

Figure 7: Alcohol-involved Motor Vehicle Drivers in Crashes by Age Group and Sex in Taos County, 2018



* In 2018, Taos County had 1 drivers in crashes for which age or sex data were missing.

Table 13: Alcohol-involved Motor Vehicle Drivers Under 21 (Ages 15-20) in Crashes in Taos County, 2014-2018

Age ¹	Year					5-Year Total
	2014	2015	2016	2017	2018	
15	0	0	0	0	0	0
16	0	1	0	0	0	1
17	1	0	0	1	1	3
18	0	1	0	0	2	3
19	0	0	0	0	0	0
20	0	0	0	1	1	2
Total Drivers	1	2	0	2	4	9

Table 14: Motor Vehicle Drivers Under 21 (Ages 15-20) in Crashes by Age, Sex and Alcohol-involvement in Taos County, 2018

Age ¹	Total Drivers				Alcohol-involved Drivers			
	Sex		Total Drivers	Percent of Total	Sex		Total Drivers	Percent of Total
	Male	Female			Male	Female		
15	3	4	7	6%	0	0	0	0%
16	18	4	22	18%	0	0	0	0%
17	15	9	24	20%	0	1	1	25%
18	24	8	32	26%	0	2	2	50%
19	15	9	24	20%	0	0	0	0%
20	5	8	13	11%	1	0	1	25%
Total Drivers	80	42	122	100%	1	3	4	100%

¹ For analysis of drivers under age 21, when the driver age or sex are not identified on the crash report (typically hit-and-run drivers), the driver data are considered unreliable and are excluded from the analysis.

**Table 15: Frequency of Contributing Factors in Crashes
by Crash Severity in Taos County, 2018**

Contributing Factors	Frequency of Contributing Factor ¹ by Crash Severity			
	Frequency in Fatal Crashes	Frequency in Injury Crashes	Frequency in Property Damage Only Crashes	Frequency in All Crashes
Human	24	336	592	952
Driver Inattention	3	87	153	243
Other Improper Driving	3	47	69	119
Following Too Closely	0	32	79	111
Excessive Speed	5	44	50	99
Failed to Yield Right of Way	1	28	68	97
Alcohol Involved	6	25	15	46
Avoid No Contact - Vehicle	0	11	34	45
Speed Too Fast for Conditions	1	12	30	43
Drove Left Of Center	0	12	18	30
Avoid No Contact - Other	0	10	18	28
Made Improper Turn	0	9	19	28
Improper Overtaking	1	4	12	17
Cell Phone	0	5	4	9
Passed Stop Sign	0	2	7	9
Improper Lane Change	0	1	6	7
Drug Involved	3	3	0	6
Improper Backing	0	0	5	5
Vehicle Skidded Before Brake	1	0	4	5
Pedestrian Error	0	2	0	2
Disregarded Traffic Signal	0	0	1	1
Failed to Yield to Police Vehicle	0	1	0	1
High Speed Pursuit	0	1	0	1
Driverless Moving Vehicle	0	0	0	0
Failed to Yield to Emergency Vehicle	0	0	0	0
Texting	0	0	0	0
Vehicle	0	4	7	11
Other Mechanical Defect	0	3	4	7
Inadequate Brakes	0	0	3	3
Defective Tires	0	1	0	1
Defective Steering	0	0	0	0
Environment	0	0	2	2
Road Defect	0	0	2	2
Low Visibility Due to Smoke	0	0	0	0
Traffic Control Not Functioning	0	0	0	0
Other	3	119	362	484
None	3	92	273	368
Other - No Driver Error	0	27	89	116

¹ Multiple contributing factors may be reported for any vehicle in a crash.

Table 16: People in Crashes by Crash Classification and Severity of Injuries in Taos County, 2018

Crash Classification	People in Crashes by Severity of Injuries					Total People
	Fatalities (Class K)	Suspected Serious Injuries (Class A)	Suspected Minor Injuries (Class B)	Possible Injuries (Class C)	No Apparent Injuries (Class O)	
Animal	0	0	2	6	110	118
Fixed Object	2	3	15	12	86	118
Other (Non-Collision)	1	0	6	4	19	30
Other (Object)	0	0	4	0	21	25
Other Vehicle	2	3	26	109	893	1,033
Overturn/Rollover	3	4	15	17	38	77
Parked Vehicle	0	0	0	1	28	29
Pedalcyclist	0	1	4	2	7	14
Pedestrian	1	3	3	1	9	17
Railroad Train	0	0	1	0	0	1
Rollover	0	0	1	1	8	10
Vehicle on Other Road	0	0	0	0	11	11
Missing Data	0	0	0	0	4	4
Total People	9	14	77	153	1,234	1,487

**Table 17: Killed or Injured Unbelted People in Crashes
by Sex and Age Group in Taos County, 2018**

Age Groups	Unbelted People Killed or Injured ^{1,2}				Total People
	Male	Percent of Male	Female	Percent of Female	
0-4	0	0%	0	0%	0
5-9	0	0%	0	0%	0
10-14	1	8%	0	0%	1
15-19	0	0%	0	0%	0
20-24	0	0%	3	38%	3
25-29	6	46%	1	13%	7
30-34	1	8%	2	25%	3
35-39	0	0%	1	13%	1
40-44	1	8%	0	0%	1
45-49	0	0%	0	0%	0
50-54	1	8%	0	0%	1
55-59	0	0%	0	0%	0
60-64	2	15%	0	0%	2
65-69	0	0%	1	13%	1
70 +	1	8%	0	0%	1
Missing Data	0	0%	0	0%	0
Total People	13	100%	8	100%	21

¹ People injured are in one of three categories: suspected serious injury, suspected minor injury, or possible injury.

² Excludes people in or on buses, heavy trucks, motorcycles, or ATVs.

**Figure 8: Seatbelt Use by People in Crashes with Fatal or
Suspected Serious Injuries in Taos County, 2014-2018**

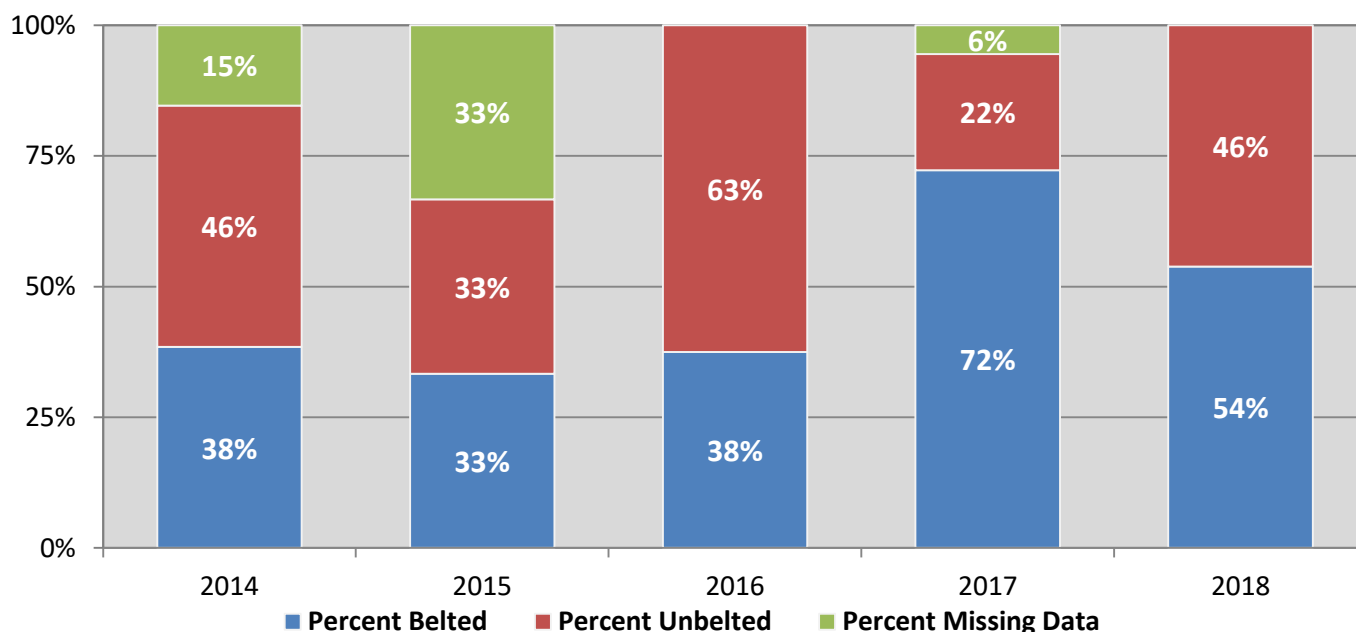
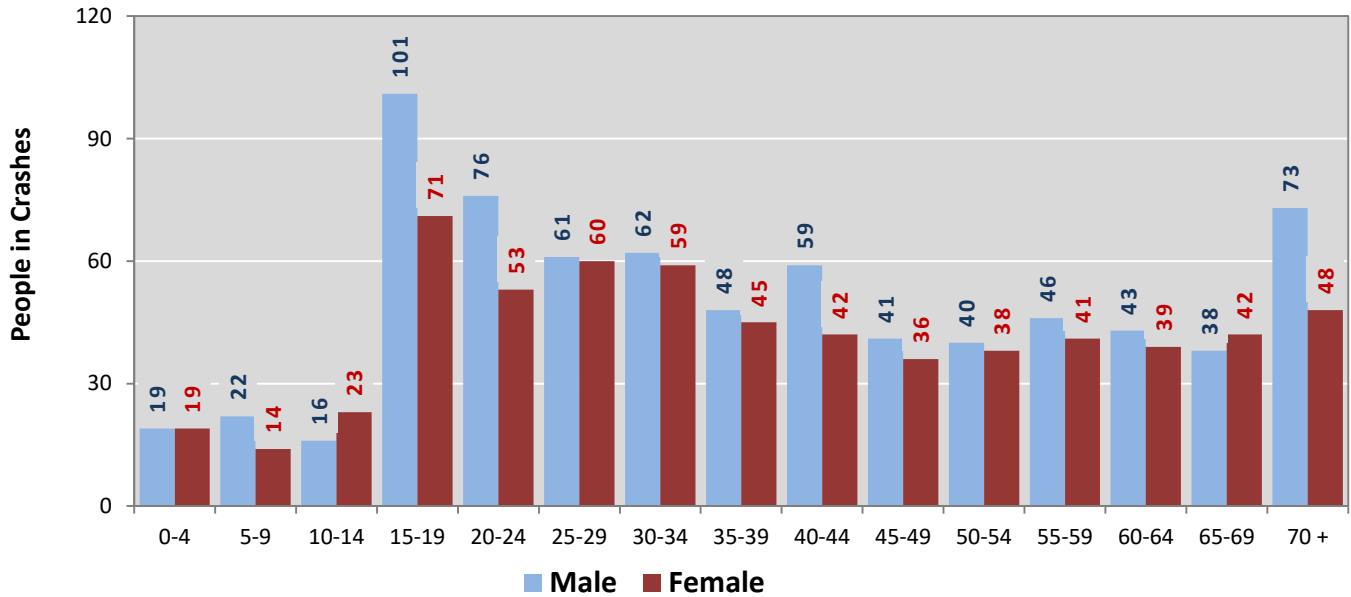
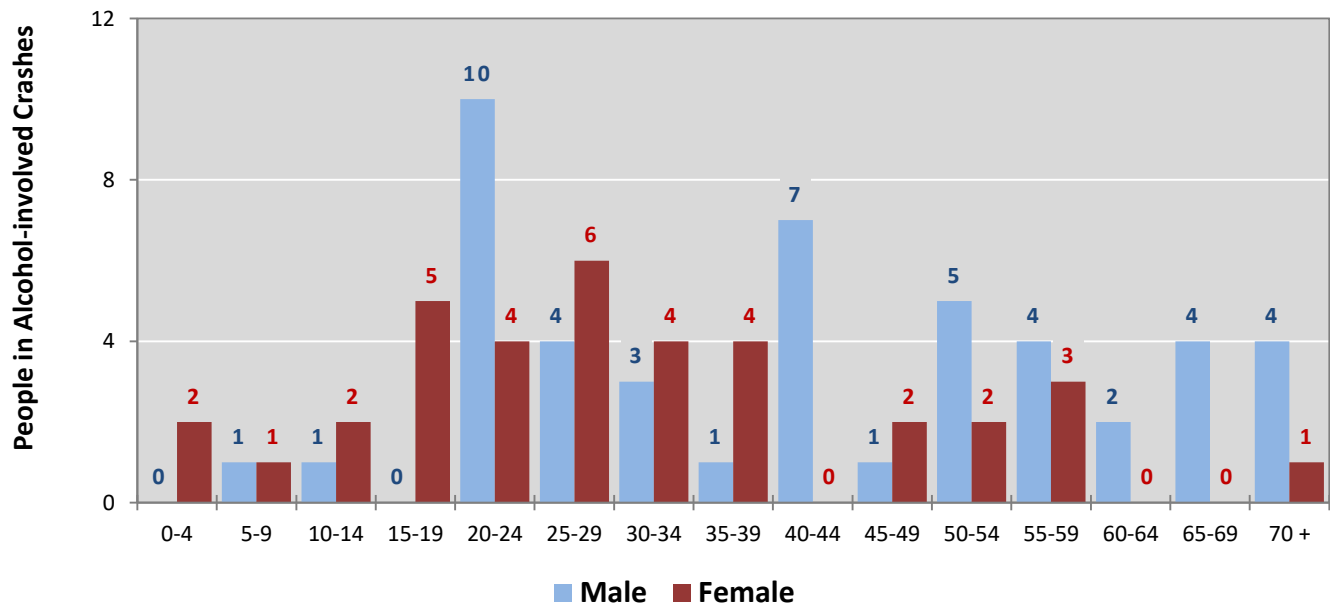


Figure 9: People in Crashes by Age Group and Sex in Taos County, 2018



* In 2018, Taos County had 112 people in crashes for which age or sex data were missing.

Figure 10: People in Alcohol-involved Crashes by Age Group and Sex in Taos County, 2018



* In 2018, Taos County had 3 people in alcohol-involved crashes for which age or sex data were missing.

Table 18: Pedestrians and Pedalcyclists in Crashes by Age Group in Taos County, 2014-2018

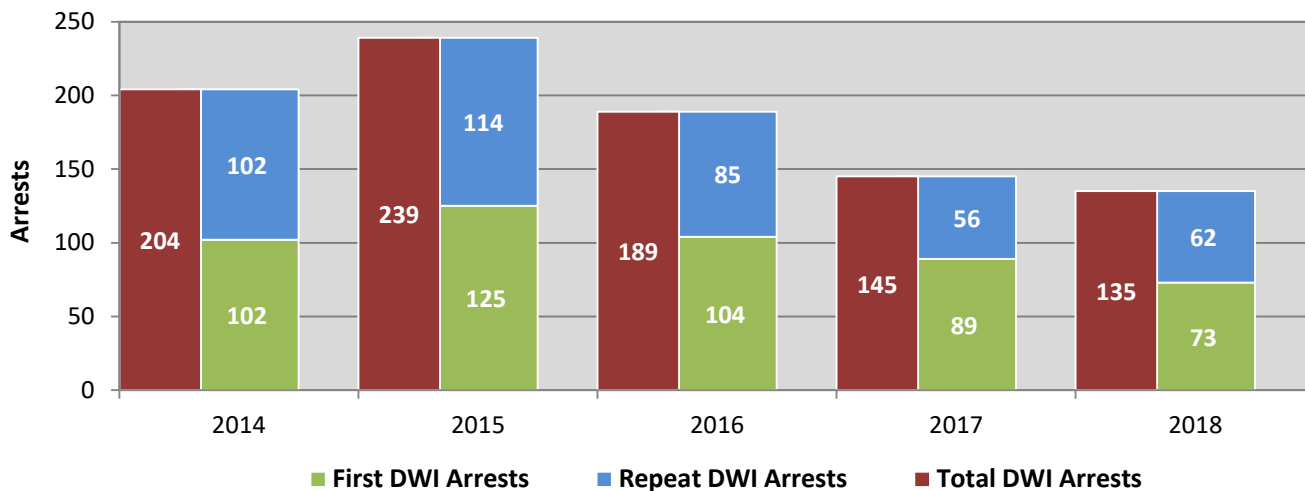
Age Groups	Pedestrians and Pedalcyclists ¹ in Crashes					5-Year Total People
	2014	2015	2016	2017	2018	
0-4	0	0	0	0	0	0
5-9	0	0	0	0	0	0
10-14	1	1	0	0	1	3
15-19	0	2	0	0	0	2
20-24	2	0	0	0	1	3
25-29	0	1	1	1	0	3
30-34	0	2	3	0	2	7
35-39	0	0	0	0	4	4
40-44	1	1	1	0	1	4
45-49	0	1	1	1	0	3
50-54	0	0	0	1	0	1
55-59	0	1	1	0	0	2
60-64	0	0	0	1	0	1
65-69	0	2	0	1	1	4
70 +	2	0	2	2	1	7
Missing Data	2	2	2	3	4	13
Total People	8	13	11	10	15	57

Table 19: Pedestrians and Pedalcyclists in Crashes by Alcohol Involvement and Severity of Injuries in Taos County, 2018

Alcohol Involvement	Pedestrians and Pedalcyclists ¹ in Crashes					Total People
	Fatalities (Class K)	Suspected Serious Injuries (Class A)	Suspected Minor Injuries (Class B)	Possible Injuries (Class C)	No Apparent Injury (Class O)	
Total Pedalcyclists	0	1	4	2	0	7
Involved	0	0	1	0	0	1
Not Involved	0	1	3	2	0	6
Total Pedestrians	1	3	3	1	0	8
Involved	0	0	0	0	0	0
Not Involved	1	3	3	1	0	8
Total People	1	4	7	3	0	15

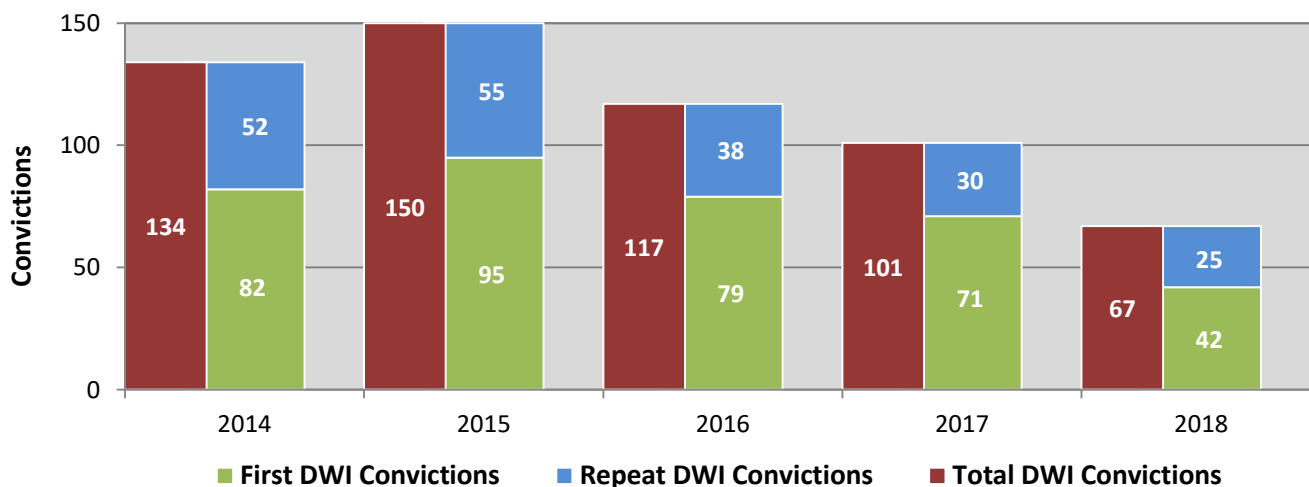
¹ Pedestrians and pedalcyclists are counted as non-motorized vehicles, when involved in a crash with a motor vehicle.

**Figure 11: DWI Arrests in Taos County,
Showing First and Repeat DWI Arrests, 2014-2018**



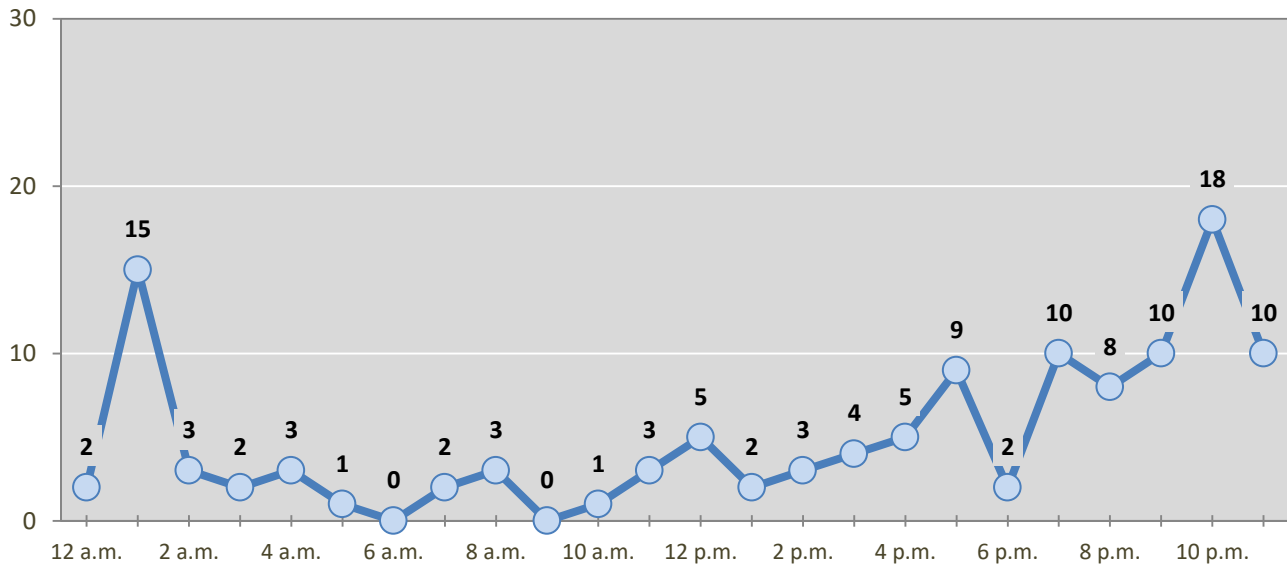
*Values are based upon the year of the arrest.

**Figure 12: DWI Convictions in Taos County,
Showing First and Repeat DWI Convictions, 2014-2018**



*Values are based upon the year of the conviction.

Figure 13: DWI Arrests by Hour in Taos County, 2018



* In 2018, Taos County had 14 arrests for which hour data were missing.

Table 20: DWI Arrests by Day of Week in Taos County, 2014-2018

Day of Week	Year					5-Year Average
	2014	2015	2016	2017	2018	
Sunday	27	40	31	22	24	29
Monday	24	19	24	18	20	21
Tuesday	19	22	19	15	11	17
Wednesday	24	27	23	9	16	20
Thursday	23	26	17	23	16	21
Friday	33	44	39	22	21	32
Saturday	54	61	36	36	27	43
Total Arrests	204	239	189	145	135	182

Table 21: Driver First DWI Arrests by Age Group in Taos County, 2014-2018

Age Groups	Driver First DWI Arrests ¹				
	2014	2015	2016	2017	2018
15-19	7	5	4	4	5
20-24	15	25	13	23	16
25-29	23	20	20	18	8
30-34	15	14	18	13	13
35-39	10	8	13	9	10
40-44	12	15	11	4	3
45-49	2	8	5	12	4
50-54	6	10	5	1	3
55-59	7	11	6	1	2
60-64	3	7	8	2	6
65-69	2	2	1	1	1
70 +	0	0	0	1	2
Missing Data	0	0	0	0	0
Total Drivers	102	125	104	89	73

¹ Values are based upon the year of the arrest.

Table 22: Driver Repeat DWI Arrests by Age Group in Taos County, 2014-2018

Age Groups	Driver Repeat DWI Arrests ¹				
	2014	2015	2016	2017	2018
15-19	1	0	0	0	0
20-24	8	8	2	4	2
25-29	13	16	3	2	4
30-34	14	16	12	7	7
35-39	9	16	14	8	4
40-44	12	16	16	11	9
45-49	18	14	12	7	11
50-54	8	9	9	7	8
55-59	7	11	8	4	7
60-64	7	4	4	3	5
65-69	3	2	4	3	5
70 +	1	2	1	0	0
Missing Data	1	0	0	0	0
Total Drivers	102	114	85	56	62

¹ Values are based upon the year of the arrest.

Table 23: Driver First DWI Convictions by Age Group in Taos County, 2014-2018

Age Groups	Driver First DWI Convictions ¹				
	2014	2015	2016	2017	2018
15-19	2	3	1	2	0
20-24	7	21	10	17	9
25-29	19	17	22	15	6
30-34	13	13	6	7	7
35-39	13	5	9	8	3
40-44	6	14	7	7	3
45-49	5	5	3	4	7
50-54	5	5	7	2	4
55-59	7	7	7	1	1
60-64	4	5	3	4	2
65-69	1	0	3	3	0
70 +	0	0	1	1	0
Missing Data	0	0	0	0	0
Total Drivers	82	95	79	71	42

¹Values are based upon the year of the conviction.

Table 24: Driver Repeat DWI Convictions by Age Group in Taos County, 2014-2018

Age Groups	Driver Repeat DWI Convictions ¹				
	2014	2015	2016	2017	2018
15-19	0	0	0	0	0
20-24	3	4	2	2	1
25-29	8	5	3	2	2
30-34	8	7	1	7	2
35-39	3	8	6	6	1
40-44	8	6	8	3	6
45-49	6	9	8	4	5
50-54	7	2	4	3	4
55-59	4	7	5	1	2
60-64	2	4	0	1	2
65-69	2	1	1	1	0
70 +	1	1	0	0	0
Missing Data	0	1	0	0	0
Total Drivers	52	55	38	30	25

¹Values are based upon the year of the conviction.

Table 25: Court Disposition of DWI Arrests for Taos County and the State, 2018

Court Disposition of DWI Arrest ¹	Taos County	Statewide	Percent of Statewide
Total DWI Arrests	135	10,205	1.3%
DWI Arrests Resulting in Convictions	54	4,641	1.2%
DWI Arrests Resulting in Dismissals ²	2	880	0.2%
DWI Arrests Awaiting Disposition	79	4,684	1.7%

¹ These are the number of DWI arrests in 2018 and whether the case resulted in a conviction or dismissal, or is still awaiting court disposition, as reported in the NM MVD Citation Tracking System (CTS) as of July 2019.

² For this table, a very small number of "not guilty" rulings may be included in the category Dismissals.

Table 26: Average Number of Days from Date of DWI Arrest to Date of Court Disposition in Taos County and the State, 2018

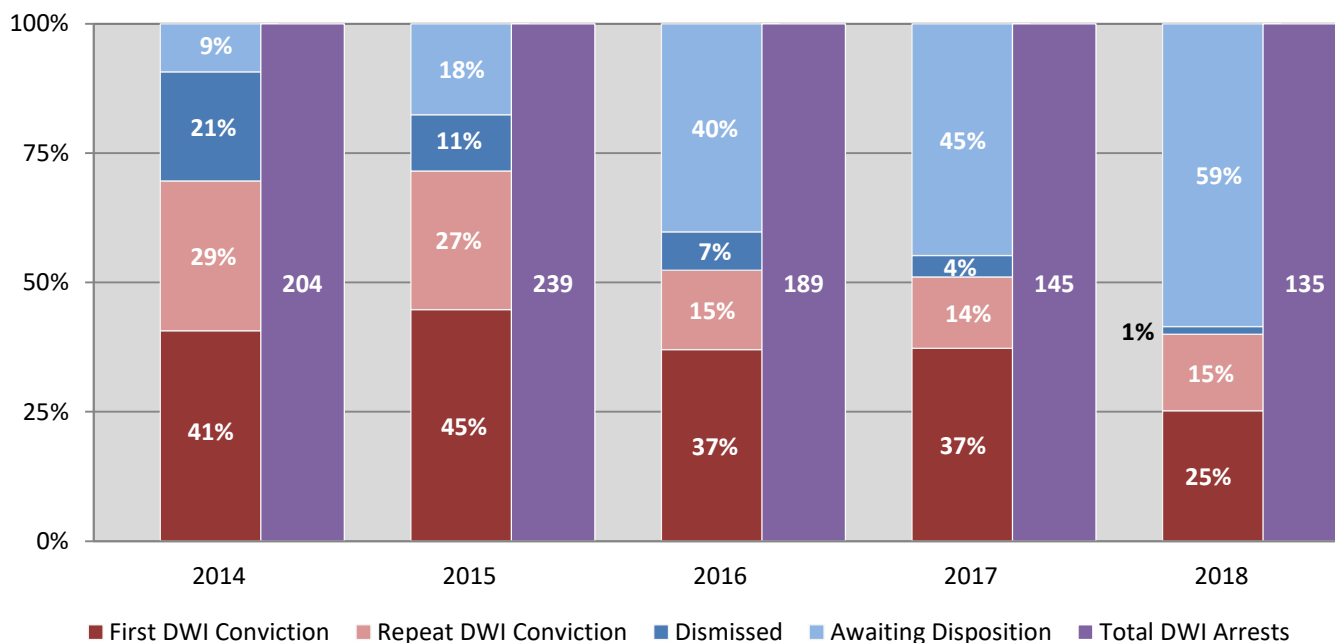
Court Disposition	Average Number of Days		Deviation from Statewide Average
	Taos County	Statewide	
DWI Conviction	175	145	30
DWI Dismissal	178	153	25

Table 27: Court Disposition of DWI Arrests in Taos County, 2014-2018

Year of DWI Arrest ¹	Court Disposition				Total DWI Arrests
	First DWI Conviction	Repeat DWI Conviction	Dismissed	Awaiting Disposition	
2014	83	59	43	19	204
2015	107	64	26	42	239
2016	70	29	14	76	189
2017	54	20	6	65	145
2018	34	20	2	79	135

¹ Values are based upon the year of the arrest.

Figure 14: Court Dispositions by Percentage of DWI Arrests in Taos County, 2014-2018



*Table 27 contains the values used to calculate percentages shown in Figure 14.