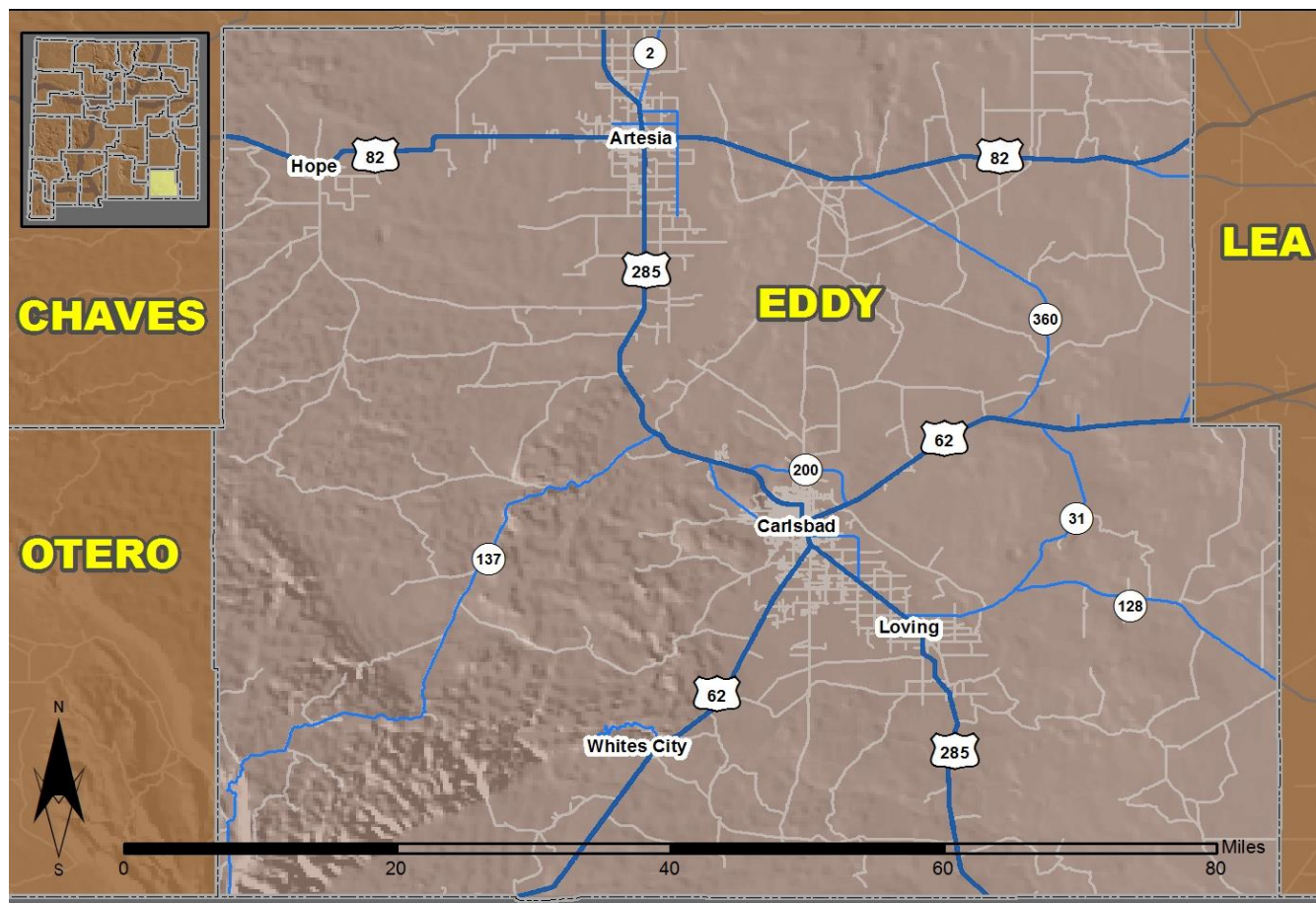


# 2019 Community Report

## Eddy County



Produced for the New Mexico Department of Transportation,  
Traffic Safety Division, Traffic Records Bureau,  
Under Contract 6093 by the University of New Mexico,  
Geospatial and Population Studies, Traffic Research Unit

Distributed in compliance with New Mexico Statute 66-7-214  
as a reference source regarding New Mexico traffic crashes

For the purposes of this report, data are compiled by the University of New Mexico, Geospatial and Population Studies, Traffic Research Unit (TRU), on behalf of the New Mexico Department of Transportation (NMDOT). Data in this report may differ from that in other data sources, such as the Federal Fatality Analysis Reporting System (FARS), due to the timing of publications and rules for how data are compiled and maintained in Federal vs. State databases. If you have questions regarding this report, please contact the Traffic Safety Division at 505-827-0427.

<https://gps.unm.edu/tru/crash-reports/community-reports>

## Definitions

---

**Aggravated DWI** – A driver arrested for 1) driving with a BAC of 0.16 or higher, 2) driving under the influence of alcohol or drugs and causing bodily injury to a human being as a result, or 3) driving under the influence of alcohol or drugs and refusing to submit to a BAC test at the time of arrest for DWI.

**Alcohol-involved Crash** – A crash for which the Uniform Crash Report indicated that 1) a DWI citation was issued, 2) alcohol was a contributing factor, or 3) a person in control of a vehicle (including a pedestrian or pedalcyclist) was suspected of being under the influence of alcohol.

**Alcohol-involved Driver** – A person in control of a vehicle who was cited for DWI or indicated on the Uniform Crash Report as being either suspected or determined by testing to be under the influence of alcohol. There can be multiple alcohol-involved drivers in a single alcohol-involved crash.

**Crash** – A reported incident on a public roadway involving one or more motor vehicles that resulted in death, personal injury, or at least \$500 in property damage. Crashes on private property (such as a parking lot) are not included.

**DWI Arrest (Citation)** – In this report, a DWI arrest (a.k.a. a DWI citation) is a driver arrested for either DWI or aggravated DWI. New Mexico’s legal limit for presumption of driving while intoxicated (DWI) is 0.08 for non-commercial drivers older than 21 years of age, 0.04 for commercial vehicle drivers, and 0.02 for drivers younger than 21 years of age.

**DWI Conviction** – A driver convicted of driving under the intoxicating influence of alcohol, narcotics, or pathogenic drugs, including aggravated DWI.

**Fatal Crash** – A crash in which at least one person was killed. More than one person can be killed in a single fatal crash.

**Fatalities** – The number of people killed in a crash. The terms “killed” and “deaths” are synonymous with “fatalities.” A fatality is crash-related if it occurs at the time of the crash or if the person(s) involved in the crash dies within 30 days.

**Injury Crash** – A reported crash in which at least one person was injured. Injury crashes involve at least one suspected serious injury (Class A), suspected minor injury (Class B), or possible injury (Class C). Fatal crashes are not included.

**Missing Data** – An indication that the applicable field on the UCR form was left blank or contained an invalid code. Starting with crashes that occurred in 2012, improvements in the identification of missing data in the NMDOT crash database led to an increase in the reported amount of missing data.

**Pedalcyclist** – A person riding a mechanism of transport that is powered solely by pedals (a.k.a. bicyclist).

**Pedestrian** – A person on foot, walking, running, jogging, hiking, sitting or lying down who is involved in a motor vehicle traffic crash.

## Sources

---

**Crash Data** – New Mexico Department of Transportation, Traffic Safety Division, Traffic Records Bureau, Traffic Crash Database, as of the report date below. Crash data are compiled using NMDOT Uniform Crash Reports (UCR), submitted by law enforcement agencies in the state, for any incident on a public roadway involving one or more motor vehicles that resulted in death, injury, or at least \$500 in property damage. These reports are processed by the NMDOT Traffic Records Bureau and analyzed by the University of New Mexico, Geospatial and Population Studies, Traffic Research Unit (TRU).

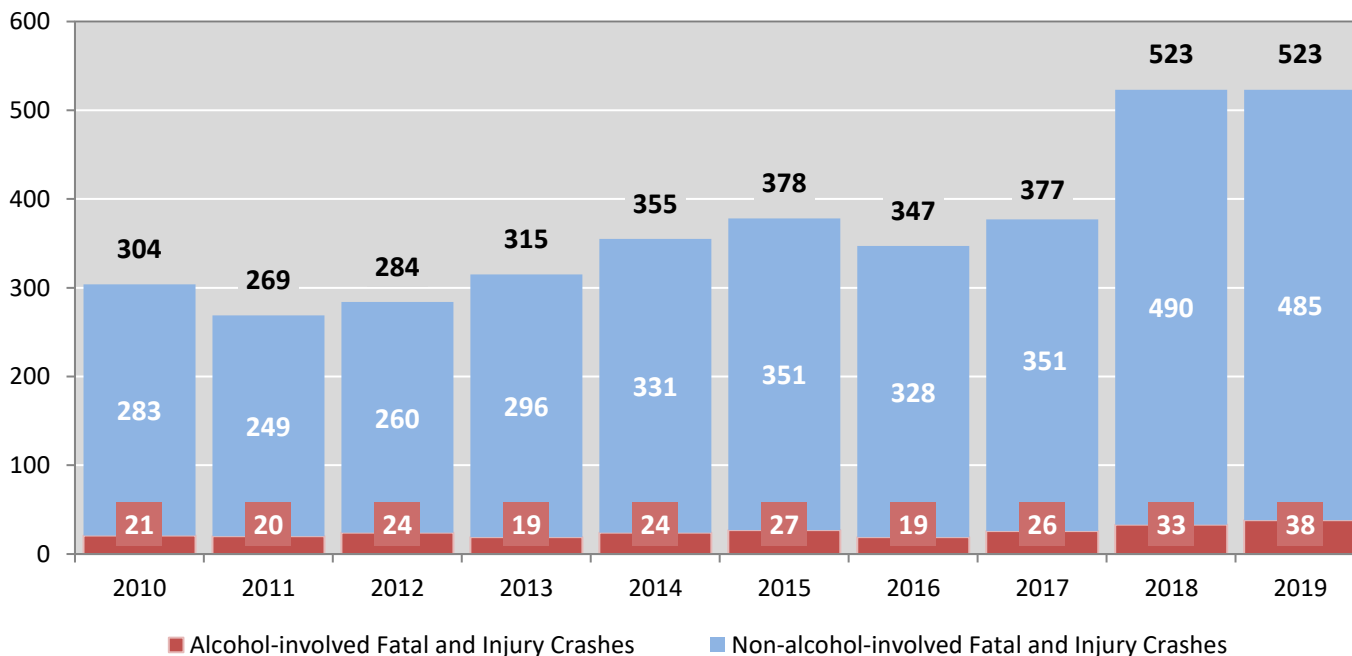
**DWI Citation Tracking System (CTS)** – New Mexico Taxation and Revenue Department (NM TRD), Motor Vehicle Division (MVD), DWI Citation Tracking System (CTS), as of October 2020. Repeat offenders are identified by the combination of account key, arrest date, and citation number. County data are based upon the county where the arrest took place. City data are based upon the city where the offender resides.

**Urban Areas** – Areas defined by the New Mexico Department of Transportation, Asset Management and Planning, 2010 U.S. Census Urbanized Area Boundaries, NMDOT-Adjusted, and U.S. Census Urban Clusters, August 21, 2013. Urban areas for crash years 2013-2017 include a 1/2 mile buffer extending out from those urban boundaries. In crashes before 2013, “urban” was defined as a town or city with a population of at least 2,500 people.

**Table 1: Total Crashes and Alcohol-involved Crashes by Crash Severity in Eddy County, 2010-2019**

Year	Total Crashes				Alcohol-involved Crashes			
	Fatal	Injury	Property Damage Only	Total	Fatal	Injury	Property Damage Only	Total
2010	13	291	674	978	3	18	22	43
2011	7	262	607	876	1	19	15	35
2012	14	270	652	936	4	20	25	49
2013	11	304	846	1,161	2	17	25	44
2014	14	341	1,212	1,567	2	22	51	75
2015	9	369	1,212	1,590	1	26	37	64
2016	6	341	1,052	1,399	1	18	32	51
2017	16	361	1,157	1,534	3	23	28	54
2018	14	509	1,433	1,956	2	31	52	85
2019	15	508	1,365	1,888	5	33	38	76

**Figure 1: Alcohol-involved Fatal and Injury Crashes Compared with Non-alcohol-involved Fatal and Injury Crashes in Eddy County, 2010-2019**



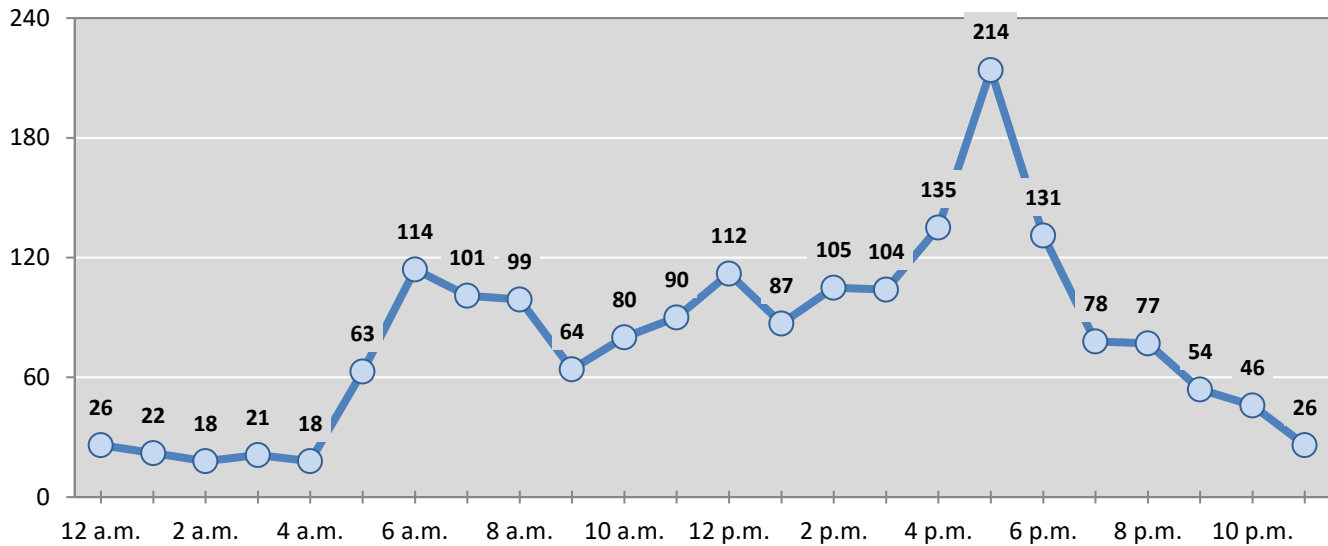
**Table 2: Crashes by Month in Eddy County, 2015-2019**

Month	Crashes					5-Year Average
	2015	2016	2017	2018	2019	
January	170	130	107	124	150	<b>136</b>
February	146	125	98	145	147	<b>132</b>
March	119	136	112	179	167	<b>143</b>
April	126	116	116	167	142	<b>133</b>
May	125	100	129	180	176	<b>142</b>
June	137	120	136	162	166	<b>144</b>
July	120	118	132	161	144	<b>135</b>
August	160	96	133	160	158	<b>141</b>
September	106	127	136	173	168	<b>142</b>
October	130	118	154	184	173	<b>152</b>
November	113	106	138	171	144	<b>134</b>
December	138	107	143	150	153	<b>138</b>
<b>Total Crashes</b>	<b>1,590</b>	<b>1,399</b>	<b>1,534</b>	<b>1,956</b>	<b>1,888</b>	<b>1,673</b>

**Table 3: Alcohol-involved Crashes by Month in Eddy County, 2015-2019**

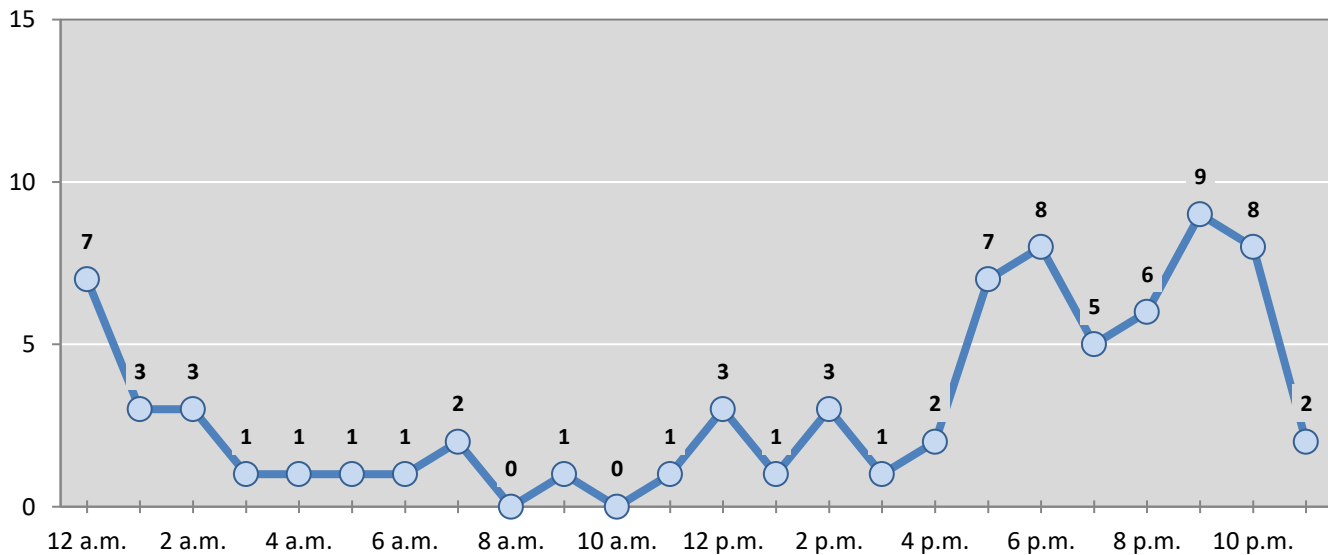
Month	Alcohol-involved Crashes					5-Year Average
	2015	2016	2017	2018	2019	
January	5	4	4	6	6	<b>5</b>
February	6	1	2	7	3	<b>4</b>
March	5	6	2	7	9	<b>6</b>
April	4	5	2	8	4	<b>5</b>
May	6	5	3	2	7	<b>5</b>
June	6	5	1	6	11	<b>6</b>
July	4	6	4	6	10	<b>6</b>
August	6	2	9	9	10	<b>7</b>
September	5	2	8	7	2	<b>5</b>
October	3	2	7	12	7	<b>6</b>
November	10	6	6	7	4	<b>7</b>
December	4	7	6	8	3	<b>6</b>
<b>Total Crashes</b>	<b>64</b>	<b>51</b>	<b>54</b>	<b>85</b>	<b>76</b>	<b>66</b>

**Figure 2: Crashes by Hour in Eddy County, 2019**



\* In 2019, Eddy County had 3 crashes for which hour data were missing.

**Figure 3: Alcohol-involved Crashes by Hour in Eddy County, 2019**



\* In 2019, Eddy County had 0 alcohol-involved crashes for which hour data were missing.

**Table 4: Alcohol-involved Crashes by Day of Week in Eddy County, 2015-2019**

Day of Week	Alcohol-involved Crashes					5-Year Average
	2015	2016	2017	2018	2019	
Sunday	17	10	15	24	18	17
Monday	7	6	5	7	6	6
Tuesday	6	7	6	10	0	6
Wednesday	4	4	7	8	5	6
Thursday	7	6	4	8	13	8
Friday	10	3	9	9	15	9
Saturday	13	15	8	19	19	15
<b>Total Crashes</b>	<b>64</b>	<b>51</b>	<b>54</b>	<b>85</b>	<b>76</b>	<b>66</b>

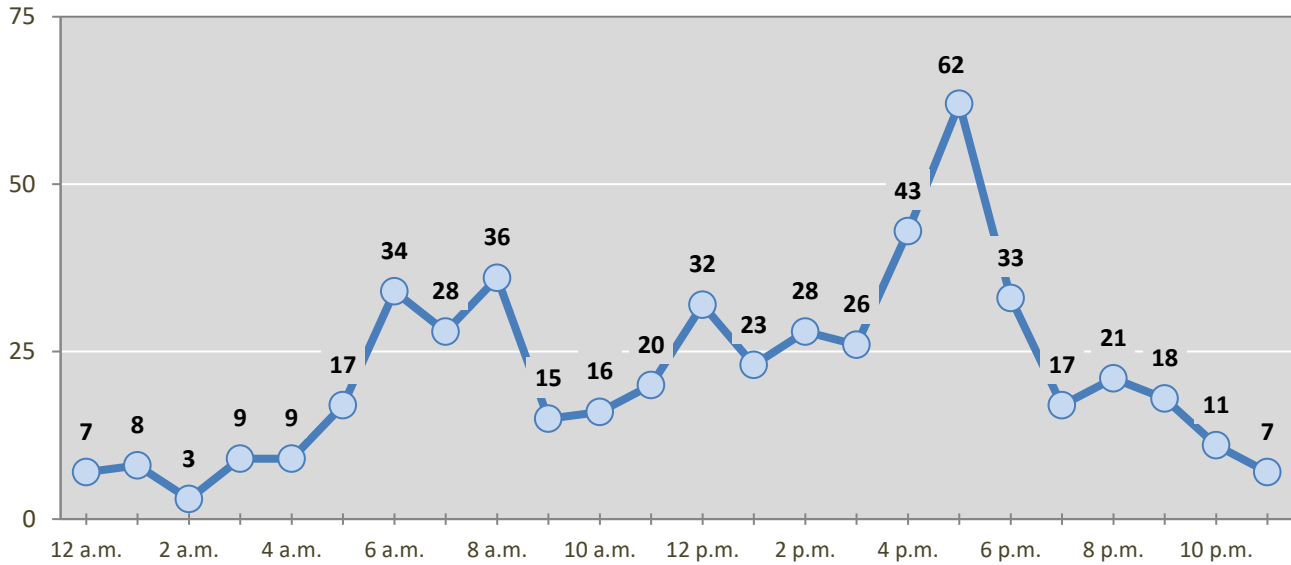
**Table 5: Fatal and Injury Crashes by Day of Week in Eddy County, 2015-2019**

Day of Week	Fatal and Injury Crashes					5-Year Average
	2015	2016	2017	2018	2019	
Sunday	37	33	38	54	52	43
Monday	42	67	51	71	71	60
Tuesday	79	47	71	89	80	73
Wednesday	46	66	67	58	86	65
Thursday	58	53	52	98	72	67
Friday	68	46	51	75	105	69
Saturday	48	35	47	78	57	53
<b>Total Crashes</b>	<b>378</b>	<b>347</b>	<b>377</b>	<b>523</b>	<b>523</b>	<b>430</b>

**Table 6: Pedestrian and Pedalcyclist Crashes by Day of Week in Eddy County, 2015-2019**

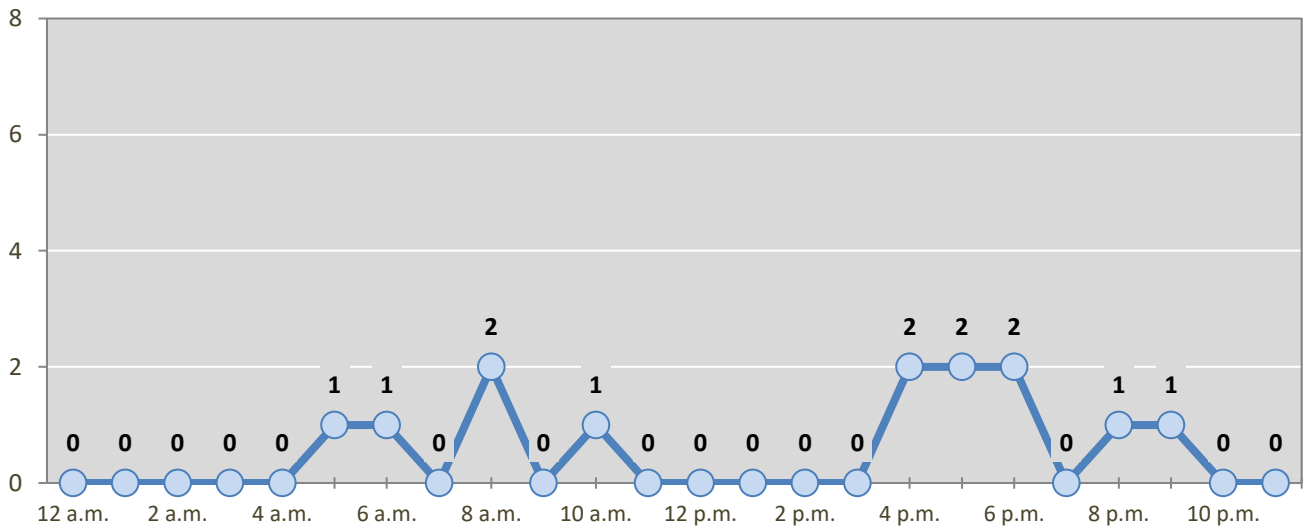
Day of Week	Pedestrian and Pedalcyclist Crashes					5-Year Average
	2015	2016	2017	2018	2019	
Sunday	3	3	3	3	1	3
Monday	1	2	2	2	3	2
Tuesday	6	4	4	4	2	4
Wednesday	4	3	1	3	1	2
Thursday	4	1	2	3	0	2
Friday	5	2	6	7	5	5
Saturday	3	2	4	3	1	3
<b>Total Crashes</b>	<b>26</b>	<b>17</b>	<b>22</b>	<b>25</b>	<b>13</b>	<b>21</b>

**Figure 4: Fatal and Injury Crashes by Hour in Eddy County, 2019**



\* In 2019, Eddy County had 0 crashes for which hour data were missing.

**Figure 5: Pedestrian and Pedalcyclist Crashes by Hour in Eddy County, 2019**



\* In 2019, Eddy County had 0 crashes for which hour data were missing.



**Table 7: Severity of Injuries to People in Crashes by Rural and Urban Location in Eddy County, 2019**

Urban and Rural Locations by Alcohol-involvement	People in Crashes by Severity of Injuries					Total People
	Fatalities (Class K)	Suspected Serious Injuries (Class A)	Suspected Minor Injuries (Class B)	Possible Injuries (Class C)	No Apparent Injuries (Class O)	
<b>People in Alcohol-involved Crashes</b>	<b>5</b>	<b>2</b>	<b>23</b>	<b>27</b>	<b>103</b>	<b>160</b>
Urban	2	0	12	18	73	105
Rural Non-Interstate	3	2	11	9	30	55
Rural Interstate	0	0	0	0	0	0
<b>People in Crashes</b>	<b>16</b>	<b>30</b>	<b>196</b>	<b>482</b>	<b>3,757</b>	<b>4,481</b>
Urban	3	7	91	333	2,698	3,132
Rural Non-Interstate	13	23	105	149	1,059	1,349
Rural Interstate	0	0	0	0	0	0
<b>Percent in Alcohol-involved Crashes</b>	<b>31%</b>	<b>7%</b>	<b>12%</b>	<b>6%</b>	<b>3%</b>	<b>4%</b>

**Table 8: Total Crashes by Roadway System and Crash Severity in Eddy County, 2015-2019**

Crash Severity by System	Crashes by Year					5-Year Average
	2015	2016	2017	2018	2019	
<b>Total Rural Interstate</b>	<b>0</b>	<b>0</b>	<b>1</b>	<b>0</b>	<b>0</b>	<b>0</b>
Fatal Crash	0	0	0	0	0	0
Injury Crash	0	0	1	0	0	0
Property Damage Only Crash	0	0	0	0	0	0
<b>Total Rural Non-Interstate</b>	<b>379</b>	<b>296</b>	<b>418</b>	<b>681</b>	<b>660</b>	<b>487</b>
Fatal Crash	6	4	10	11	12	9
Injury Crash	100	63	107	208	194	134
Property Damage Only Crash	273	229	301	462	454	344
<b>Total Urban</b>	<b>1,211</b>	<b>1,103</b>	<b>1,115</b>	<b>1,275</b>	<b>1,228</b>	<b>1,186</b>
Fatal Crash	3	2	6	3	3	3
Injury Crash	269	278	253	301	314	283
Property Damage Only Crash	939	823	856	971	911	900



**Table 9: Total Crashes by Crash Classification in Eddy County, 2015-2019**

Crash Classification	Total Crashes by Year					5-Year Average
	2015	2016	2017	2018	2019	
Animal	109	109	109	110	120	111
Fixed Object	184	169	152	159	150	163
Other (Non-Collision)	15	21	27	31	22	23
Other (Object)	36	17	41	40	39	35
Other Vehicle	972	855	994	1,390	1,348	1,112
Overturn/Rollover	34	56	63	96	94	69
Parked Vehicle	112	128	105	74	70	98
Pedalcyclist	9	6	11	10	6	8
Pedestrian	17	12	11	15	7	12
Railroad Train	1	0	1	1	0	1
Rollover	66	8	10	13	16	23
Vehicle on Other Road	23	18	10	13	8	14
Missing Data	12	0	0	4	8	5
<b>Total Crashes</b>	<b>1,590</b>	<b>1,399</b>	<b>1,534</b>	<b>1,956</b>	<b>1,888</b>	<b>1,673</b>

**Table 10: Vehicles in Crashes by Vehicle Type in Eddy County, 2015-2019**

Vehicle Type <sup>1</sup>	Vehicles in Crashes by Vehicle Type					5-Year Average
	2015	2016	2017	2018	2019	
Bus	2	3	2	8	5	4
Motorcycle/ATV	27	39	33	43	37	36
Passenger	868	811	974	1,367	1,370	1,078
Pedalcyclist	9	5	11	10	6	8
Pedestrian	18	14	13	17	7	14
Pickup	1,042	860	992	1,192	1,232	1,064
Semi	180	133	202	329	261	221
Van/SUV/4WD	504	468	447	445	401	453
Other Vehicle	28	33	8	44	0	23
Missing Data	144	105	65	47	94	91
<b>Total Vehicles</b>	<b>2,822</b>	<b>2,471</b>	<b>2,747</b>	<b>3,502</b>	<b>3,413</b>	<b>2,991</b>

<sup>1</sup> Pedestrians and pedalcyclists are counted as non-motorized vehicles, when involved in a crash with a motor vehicle. See Page 17 for data on drivers of non-motorized vehicles in crashes (i.e. pedestrians and pedalcyclists).

**Table 11: Motor Vehicle Drivers in Crashes by Vehicle Type and Age Group in Eddy County, 2019**

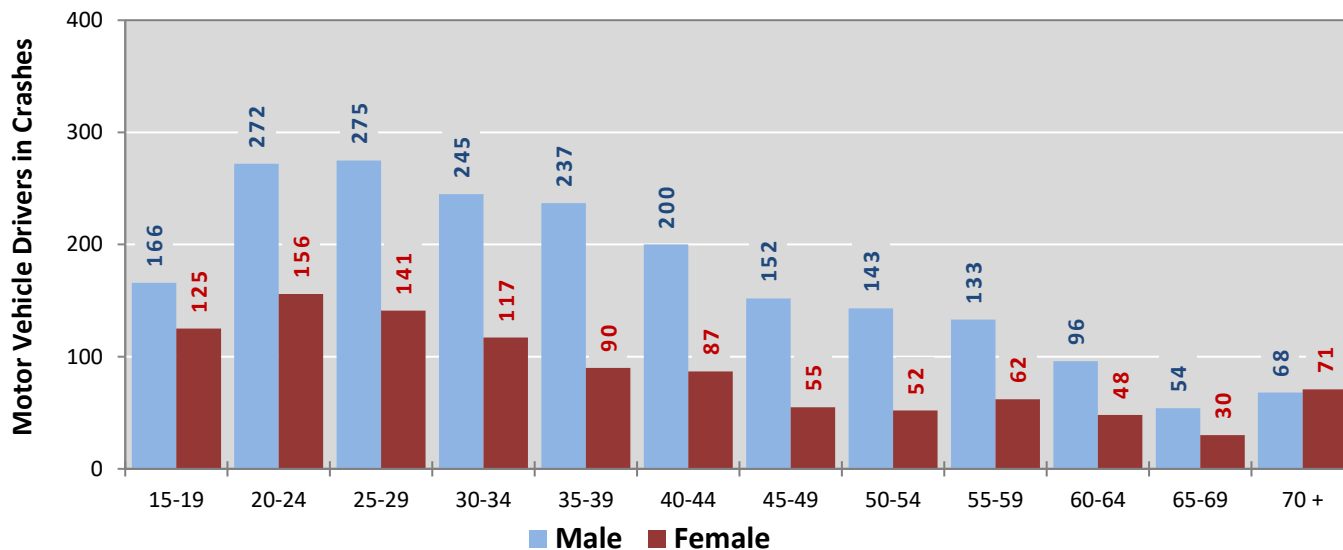
Age Groups	Motor Vehicle <sup>1</sup> Drivers by Vehicle Type and Age Group								Total Drivers
	Bus	Motor-cycle	Passenger	Pickup	Semi	Van 4WD SUV	Other Vehicle	Missing Data	
15-19	0	2	170	92	1	27	0	0	292
20-24	0	2	225	150	17	34	0	0	428
25-29	0	6	167	166	20	57	0	0	416
30-34	0	10	147	131	26	48	0	0	362
35-39	0	7	115	133	34	38	0	0	327
40-44	0	1	106	106	35	39	0	0	287
45-49	0	1	72	79	30	25	0	0	207
50-54	1	1	58	76	37	22	0	0	195
55-59	1	0	63	81	26	24	0	0	195
60-64	1	2	51	63	16	11	0	0	144
65-69	2	1	32	26	7	16	0	0	84
70 +	0	1	72	35	1	30	0	0	139
Missing Data	0	3	92	94	11	30	0	94	324
<b>Total Drivers</b>	<b>5</b>	<b>37</b>	<b>1,370</b>	<b>1,232</b>	<b>261</b>	<b>401</b>	<b>0</b>	<b>94</b>	<b>3,400</b>

**Table 12: Alcohol-involved Motor Vehicle Drivers in Crashes by Vehicle Type and Age Group in Eddy County, 2019**

Age Groups	Alcohol-involved Motor Vehicle <sup>1</sup> Drivers by Vehicle Type and Age Group								Total Drivers
	Bus	Motor-cycle	Passenger	Pickup	Semi	Van 4WD SUV	Other Vehicle	Missing Data	
15-19	0	1	0	1	0	1	0	0	3
20-24	0	0	6	8	0	2	0	0	16
25-29	0	2	4	5	1	1	0	0	13
30-34	0	0	2	7	0	2	0	0	11
35-39	0	0	4	4	0	1	0	0	9
40-44	0	0	4	1	0	2	0	0	7
45-49	0	0	2	2	0	2	0	0	6
50-54	0	0	1	3	0	0	0	0	4
55-59	0	0	1	2	0	0	0	0	3
60-64	0	0	1	1	0	0	0	0	2
65-69	0	0	0	0	0	0	0	0	0
70 +	0	0	0	0	0	1	0	0	1
Missing Data	0	0	0	1	0	0	0	0	1
<b>Total Drivers</b>	<b>0</b>	<b>3</b>	<b>25</b>	<b>35</b>	<b>1</b>	<b>12</b>	<b>0</b>	<b>0</b>	<b>76</b>

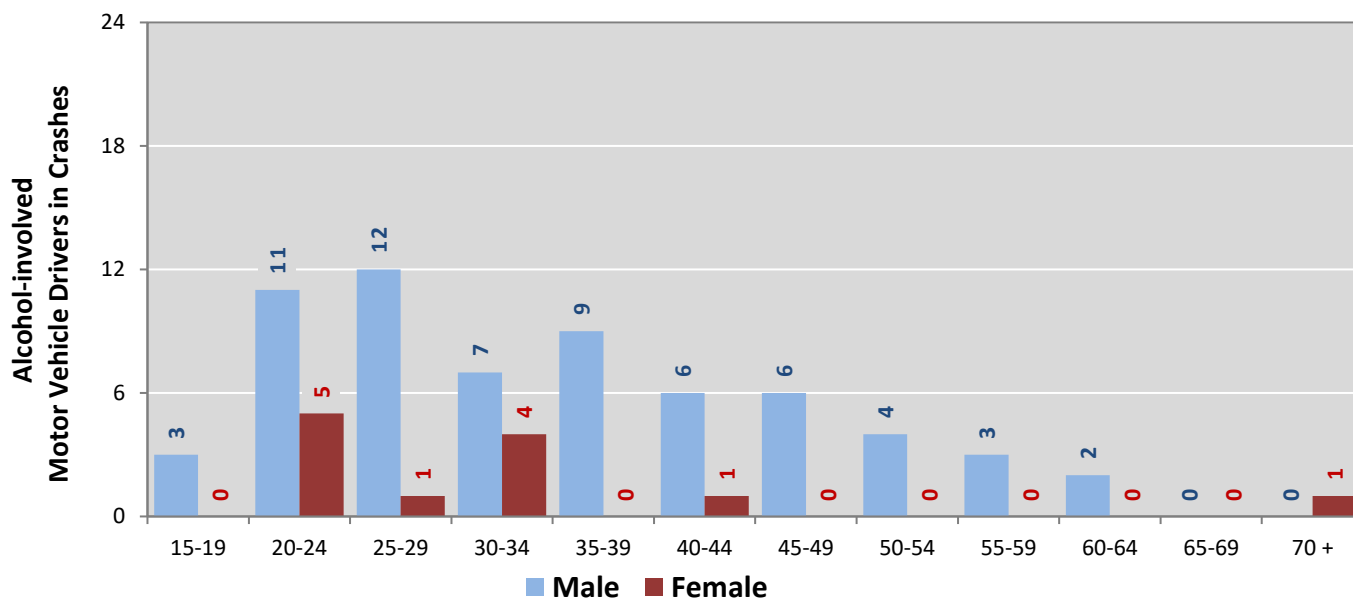
<sup>1</sup> See Page 17 for data on drivers of non-motorized vehicles in crashes (i.e. pedestrians and pedalcyclists).

**Figure 6: Motor Vehicle Drivers in Crashes by Age Group and Sex in Eddy County, 2019**



\* In 2019, Eddy County had 325 drivers in crashes for which age or sex data were missing.

**Figure 7: Alcohol-involved Motor Vehicle Drivers in Crashes by Age Group and Sex in Eddy County, 2019**



\* In 2019, Eddy County had 1 drivers in crashes for which age or sex data were missing.

**Table 13: Alcohol-involved Motor Vehicle Drivers Under 21 (Ages 15-20) in Crashes in Eddy County, 2015-2019**

Age <sup>1</sup>	Year					5-Year Total
	2015	2016	2017	2018	2019	
15	0	0	0	0	0	0
16	1	0	1	0	0	2
17	0	0	0	0	1	1
18	0	2	0	0	1	3
19	5	2	0	2	1	10
20	2	0	2	1	2	7
<b>Total Drivers</b>	<b>8</b>	<b>4</b>	<b>3</b>	<b>3</b>	<b>5</b>	<b>23</b>

**Table 14: Motor Vehicle Drivers Under 21 (Ages 15-20) in Crashes by Age, Sex and Alcohol-involvement in Eddy County, 2019**

Age <sup>1</sup>	Total Drivers				Alcohol-involved Drivers			
	Sex		Total Drivers	Percent of Total	Sex		Total Drivers	Percent of Total
	Male	Female			Male	Female		
15	8	6	14	4%	0	0	0	0%
16	20	34	54	15%	0	0	0	0%
17	41	26	67	18%	1	0	1	20%
18	40	34	74	20%	1	0	1	20%
19	57	25	82	22%	1	0	1	20%
20	47	34	81	22%	2	0	2	40%
<b>Total Drivers</b>	<b>213</b>	<b>159</b>	<b>372</b>	<b>100%</b>	<b>5</b>	<b>0</b>	<b>5</b>	<b>100%</b>

<sup>1</sup> For analysis of drivers under age 21, when the driver age or sex are not identified on the crash report (typically hit-and-run drivers), the driver data are considered unreliable and are excluded from the analysis.

**Table 15: Frequency of Contributing Factors in Crashes  
by Crash Severity in Eddy County, 2019**

Contributing Factors	Frequency of Contributing Factor <sup>1</sup> by Crash Severity			
	Frequency in Fatal Crashes	Frequency in Injury Crashes	Frequency in Property Damage Only Crashes	Frequency in All Crashes
<b>Human</b>	<b>32</b>	<b>776</b>	<b>1,674</b>	<b>2,482</b>
Driver Inattention	5	256	567	<b>828</b>
Failed to Yield Right of Way	0	129	203	<b>332</b>
Following Too Closely	1	69	198	<b>268</b>
Excessive Speed	3	45	74	<b>122</b>
Other Improper Driving	4	32	82	<b>118</b>
Made Improper Turn	0	20	88	<b>108</b>
Avoid No Contact - Vehicle	1	21	67	<b>89</b>
Speed Too Fast for Conditions	0	36	52	<b>88</b>
Alcohol Involved	6	34	38	<b>78</b>
Passed Stop Sign	0	34	39	<b>73</b>
Improper Backing	0	4	63	<b>67</b>
Improper Lane Change	0	6	57	<b>63</b>
Disregarded Traffic Signal	0	28	32	<b>60</b>
Drove Left Of Center	5	24	24	<b>53</b>
Improper Overtaking	0	8	37	<b>45</b>
Avoid No Contact - Other	0	8	23	<b>31</b>
Cell Phone	0	8	9	<b>17</b>
Drug Involved	6	5	3	<b>14</b>
Vehicle Skidded Before Brake	0	3	9	<b>12</b>
Driverless Moving Vehicle	0	0	5	<b>5</b>
Failed to Yield to Police Vehicle	0	1	3	<b>4</b>
Pedestrian Error	1	3	0	<b>4</b>
High Speed Pursuit	0	2	1	<b>3</b>
Failed to Yield to Emergency Vehicle	0	0	0	<b>0</b>
Texting	0	0	0	<b>0</b>
<b>Vehicle</b>	<b>2</b>	<b>17</b>	<b>35</b>	<b>54</b>
Other Mechanical Defect	0	6	17	<b>23</b>
Inadequate Brakes	0	6	12	<b>18</b>
Defective Tires	2	4	4	<b>10</b>
Defective Steering	0	1	2	<b>3</b>
<b>Environment</b>	<b>0</b>	<b>2</b>	<b>9</b>	<b>11</b>
Road Defect	0	0	7	<b>7</b>
Traffic Control Not Functioning	0	2	2	<b>4</b>
Low Visibility Due to Smoke	0	0	0	<b>0</b>
<b>Other</b>	<b>6</b>	<b>440</b>	<b>1,162</b>	<b>1,608</b>
None	5	362	939	<b>1,306</b>
Other - No Driver Error	1	78	223	<b>302</b>

<sup>1</sup> Multiple contributing factors may be reported for any vehicle in a crash.

**Table 16: People in Crashes by Crash Classification and Severity of Injuries in Eddy County, 2019**

Crash Classification	People in Crashes by Severity of Injuries					Total People
	Fatalities (Class K)	Suspected Serious Injuries (Class A)	Suspected Minor Injuries (Class B)	Possible Injuries (Class C)	No Apparent Injuries (Class O)	
Animal	0	1	1	5	159	166
Fixed Object	1	2	15	12	152	182
Other (Non-Collision)	0	0	4	3	22	29
Other (Object)	0	0	3	2	45	50
Other Vehicle	9	18	127	420	3,114	3,688
Overturn/Rollover	1	6	27	22	70	126
Parked Vehicle	0	0	3	4	146	153
Pedalcyclist	0	0	1	5	7	13
Pedestrian	1	0	3	2	8	14
Railroad Train	0	0	0	0	0	0
Rollover	4	2	9	3	9	27
Vehicle on Other Road	0	1	3	1	14	19
Missing Data	0	0	0	3	11	14
<b>Total People</b>	<b>16</b>	<b>30</b>	<b>196</b>	<b>482</b>	<b>3,757</b>	<b>4,481</b>

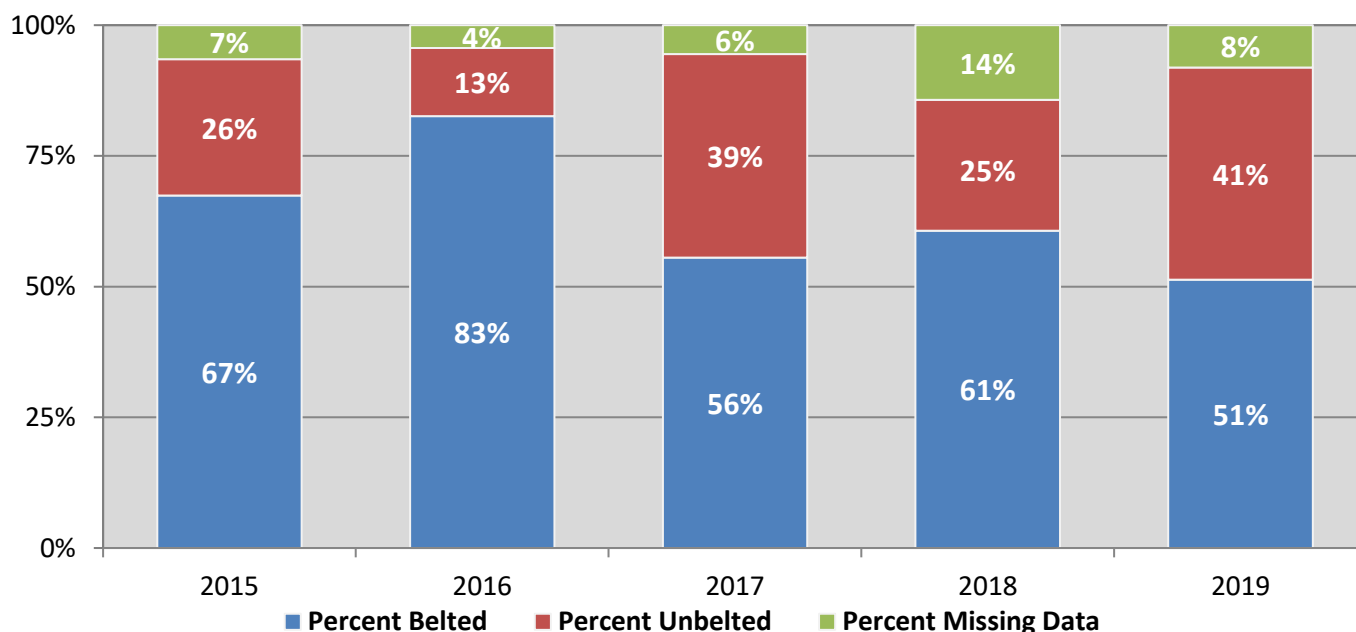
**Table 17: Killed or Injured Unbelted People in Crashes  
by Sex and Age Group in Eddy County, 2019**

Age Groups	Unbelted People Killed or Injured <sup>1,2</sup>				Total People
	Male	Percent of Male	Female	Percent of Female	
0-4	0	0%	0	0%	0
5-9	0	0%	0	0%	0
10-14	1	4%	2	15%	3
15-19	2	7%	2	15%	4
20-24	6	22%	2	15%	8
25-29	5	19%	2	15%	7
30-34	2	7%	2	15%	4
35-39	2	7%	1	8%	3
40-44	2	7%	1	8%	3
45-49	5	19%	1	8%	6
50-54	0	0%	0	0%	0
55-59	2	7%	0	0%	2
60-64	0	0%	0	0%	0
65-69	0	0%	0	0%	0
70 +	0	0%	0	0%	0
Missing Data	0	0%	0	0%	0
<b>Total People</b>	<b>27</b>	<b>100%</b>	<b>13</b>	<b>100%</b>	<b>40</b>

<sup>1</sup> People injured are in one of three categories: suspected serious injury, suspected minor injury, or possible injury.

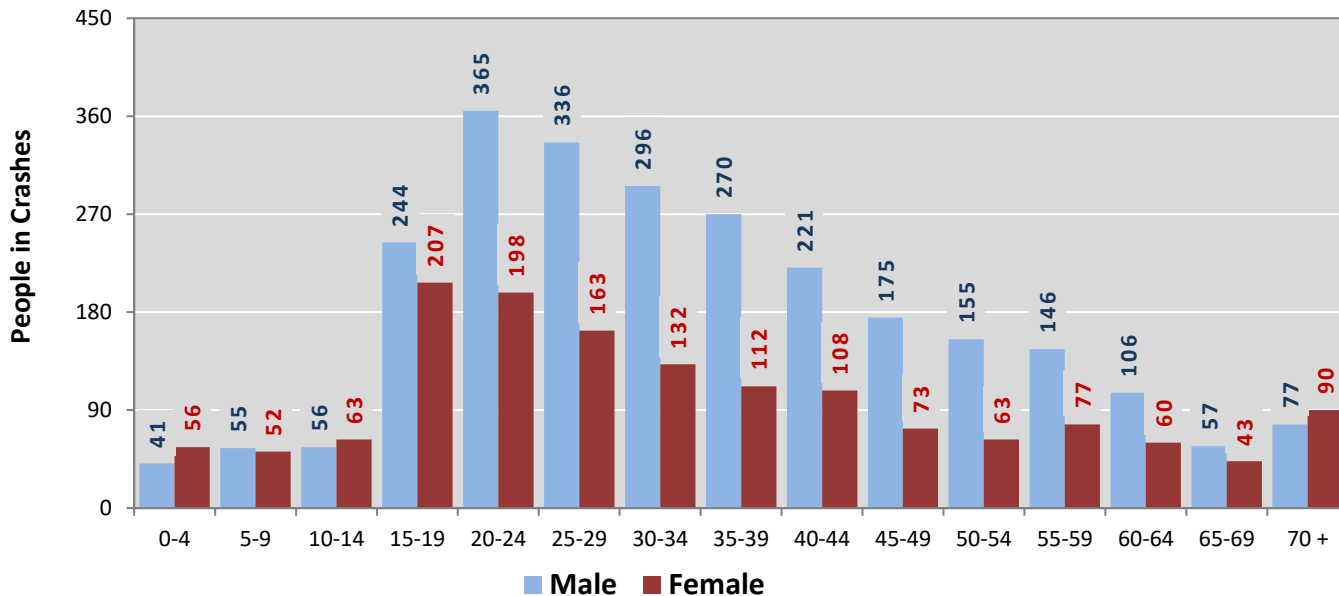
<sup>2</sup> Excludes people in or on buses, heavy trucks, motorcycles, or ATVs.

**Figure 8: Seatbelt Use by People in Crashes with Fatal or Suspected Serious Injuries in Eddy County, 2015-2019**



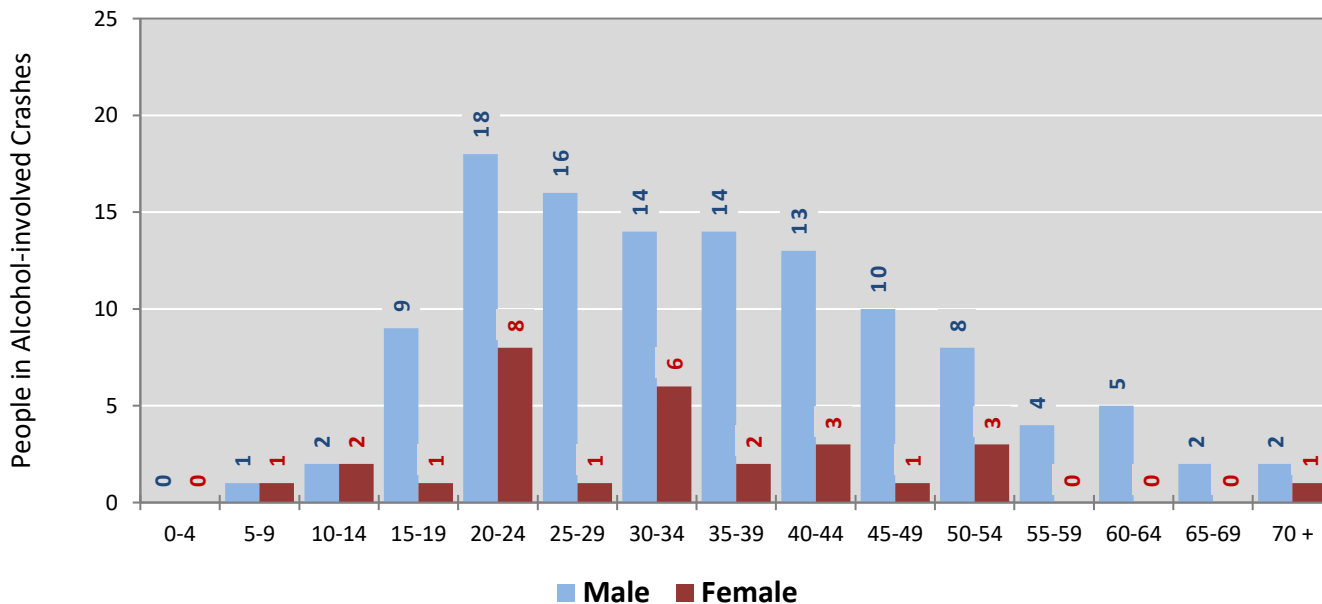


**Figure 9: People in Crashes by Age Group and Sex in Eddy County, 2019**



\* In 2019, Eddy County had 384 people in crashes for which age or sex data were missing.

**Figure 10: People in Alcohol-involved Crashes by Age Group and Sex in Eddy County, 2019**



\* In 2019, Eddy County had 13 people in alcohol-involved crashes for which age or sex data were missing.

**Table 18: Pedestrians and Pedalcyclists in Crashes by Age Group in Eddy County, 2015-2019**

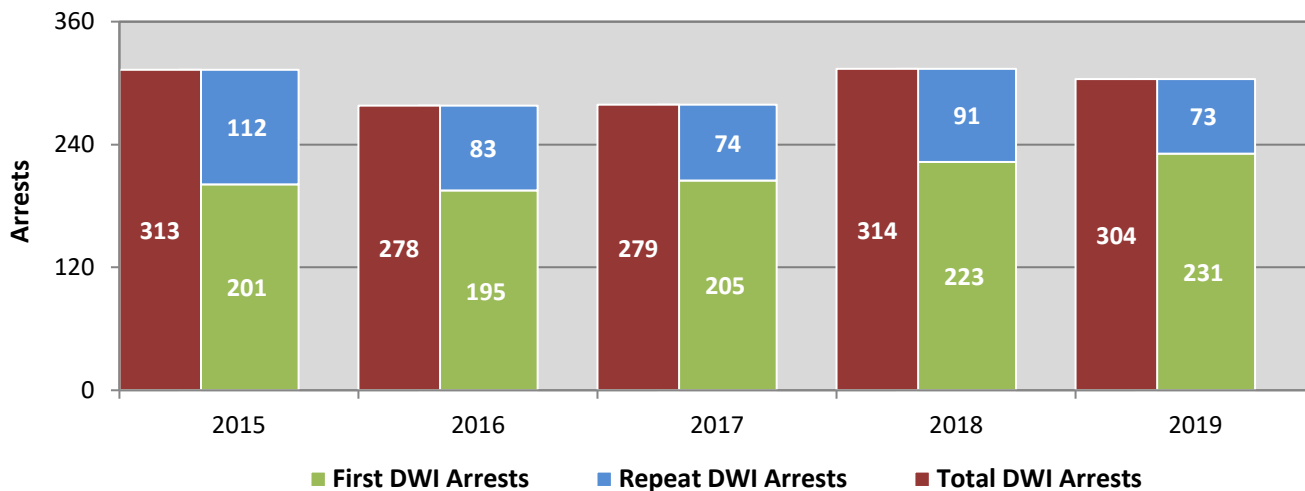
Age Groups	Pedestrians and Pedalcyclists <sup>1</sup> in Crashes					5-Year Total People
	2015	2016	2017	2018	2019	
0-4	0	0	0	0	1	1
5-9	1	4	2	0	0	7
10-14	3	2	3	2	1	11
15-19	6	2	3	1	1	13
20-24	1	1	2	2	0	6
25-29	2	1	2	3	1	9
30-34	2	0	2	1	1	6
35-39	0	0	3	3	1	7
40-44	0	1	1	2	1	5
45-49	1	2	0	3	0	6
50-54	5	1	1	1	1	9
55-59	0	2	2	3	1	8
60-64	0	1	2	2	2	7
65-69	0	0	0	0	1	1
70 +	0	2	0	0	1	3
Missing Data	6	0	1	4	0	11
<b>Total People</b>	<b>27</b>	<b>19</b>	<b>24</b>	<b>27</b>	<b>13</b>	<b>110</b>

**Table 19: Pedestrians and Pedalcyclists in Crashes by Alcohol Involvement and Severity of Injuries in Eddy County, 2019**

Alcohol Involvement	Pedestrians and Pedalcyclists <sup>1</sup> in Crashes					Total People
	Fatalities (Class K)	Suspected Serious Injuries (Class A)	Suspected Minor Injuries (Class B)	Possible Injuries (Class C)	No Apparent Injury (Class O)	
<b>Total Pedalcyclists</b>	<b>0</b>	<b>0</b>	<b>1</b>	<b>5</b>	<b>0</b>	<b>6</b>
Involved	0	0	0	0	0	0
Not Involved	0	0	1	5	0	6
<b>Total Pedestrians</b>	<b>1</b>	<b>0</b>	<b>3</b>	<b>2</b>	<b>1</b>	<b>7</b>
Involved	1	0	1	0	0	2
Not Involved	0	0	2	2	1	5
<b>Total People</b>	<b>1</b>	<b>0</b>	<b>4</b>	<b>7</b>	<b>1</b>	<b>13</b>

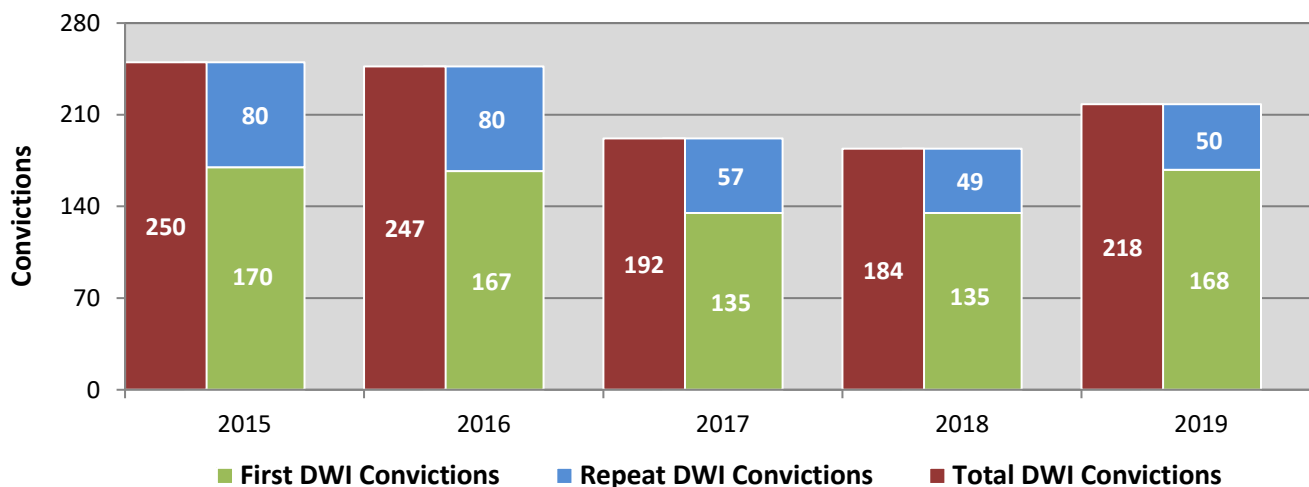
<sup>1</sup> Pedestrians and pedalcyclists are counted as non-motorized vehicles, when involved in a crash with a motor vehicle.

**Figure 11: DWI Arrests in Eddy County,  
Showing First and Repeat DWI Arrests, 2015-2019**



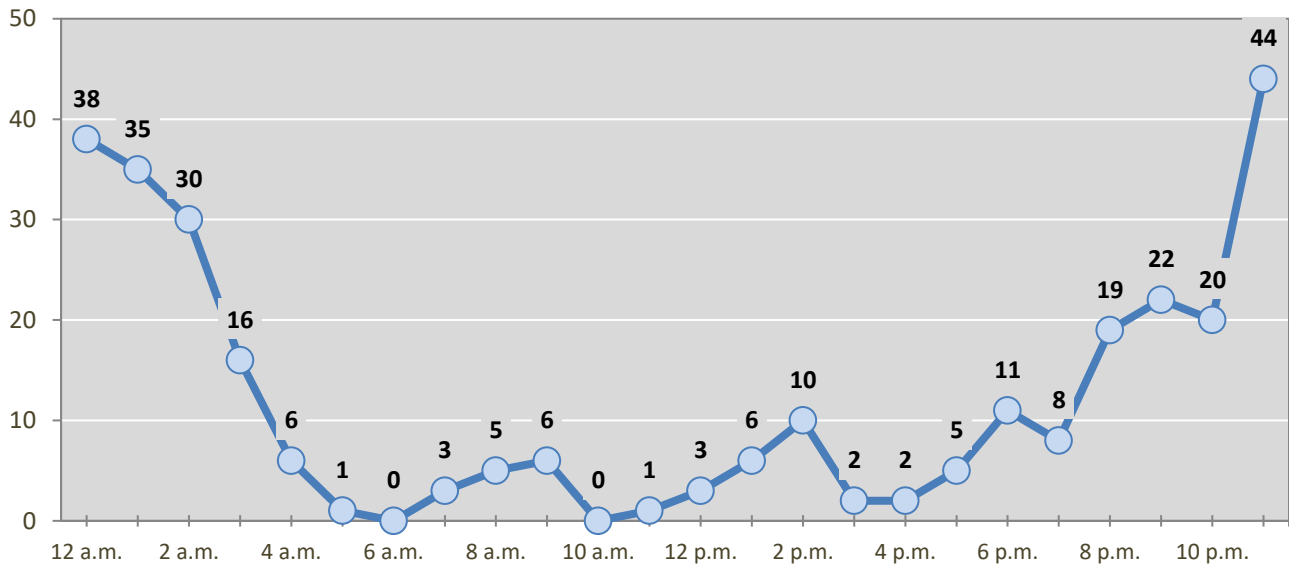
\*Values are based upon the year of the arrest.

**Figure 12: DWI Convictions in Eddy County,  
Showing First and Repeat DWI Convictions, 2015-2019**



\*Values are based upon the year of the conviction.

**Figure 13: DWI Arrests by Hour in Eddy County, 2019**



\* In 2019, Eddy County had 11 arrests for which hour data were missing.

**Table 20: DWI Arrests by Day of Week in Eddy County, 2015-2019**

Day of Week	Year					5-Year Average
	2015	2016	2017	2018	2019	
Sunday	82	69	70	67	80	74
Monday	24	26	24	36	21	26
Tuesday	30	25	15	16	14	20
Wednesday	19	29	34	33	14	26
Thursday	42	27	28	29	34	32
Friday	49	33	41	50	64	47
Saturday	67	69	67	83	77	73
<b>Total Arrests</b>	<b>313</b>	<b>278</b>	<b>279</b>	<b>314</b>	<b>304</b>	<b>298</b>

**Table 21: Driver First DWI Arrests by Age Group in Eddy County, 2015-2019**

Age Groups	Driver First DWI Arrests <sup>1</sup>				
	2015	2016	2017	2018	2019
15-19	23	22	6	10	16
20-24	40	39	37	38	56
25-29	36	36	57	45	48
30-34	31	21	36	45	29
35-39	22	21	18	28	27
40-44	16	20	19	18	25
45-49	15	17	9	17	11
50-54	10	9	8	7	7
55-59	5	5	6	11	4
60-64	3	2	6	1	6
65-69	0	3	2	2	0
70 +	0	0	0	1	2
Missing Data	0	0	1	0	0
<b>Total Drivers</b>	<b>201</b>	<b>195</b>	<b>205</b>	<b>223</b>	<b>231</b>

<sup>1</sup> Values are based upon the year of the arrest.

**Table 22: Driver Repeat DWI Arrests by Age Group in Eddy County, 2015-2019**

Age Groups	Driver Repeat DWI Arrests <sup>1</sup>				
	2015	2016	2017	2018	2019
15-19	1	0	0	0	0
20-24	9	3	5	4	9
25-29	15	15	13	15	8
30-34	19	18	17	12	10
35-39	12	9	9	11	13
40-44	13	12	4	8	11
45-49	13	10	6	16	8
50-54	16	6	9	12	5
55-59	8	6	4	10	6
60-64	3	2	5	1	2
65-69	1	2	2	2	1
70 +	2	0	0	0	0
Missing Data	0	0	0	0	0
<b>Total Drivers</b>	<b>112</b>	<b>83</b>	<b>74</b>	<b>91</b>	<b>73</b>

<sup>1</sup> Values are based upon the year of the arrest.

**Table 23: Driver First DWI Convictions by Age Group in Eddy County, 2015-2019**

Age Groups	Driver First DWI Convictions <sup>1</sup>				
	2015	2016	2017	2018	2019
15-19	10	19	6	5	10
20-24	35	35	27	21	39
25-29	37	35	40	22	38
30-34	29	21	22	27	29
35-39	13	22	11	16	21
40-44	17	10	6	14	12
45-49	11	13	5	12	8
50-54	8	6	7	4	5
55-59	9	2	5	8	2
60-64	0	3	3	3	2
65-69	1	1	3	2	1
70 +	0	0	0	1	1
Missing Data	0	0	0	0	0
<b>Total Drivers</b>	<b>170</b>	<b>167</b>	<b>135</b>	<b>135</b>	<b>168</b>

<sup>1</sup> Values are based upon the year of the conviction.

**Table 24: Driver Repeat DWI Convictions by Age Group in Eddy County, 2015-2019**

Age Groups	Driver Repeat DWI Convictions <sup>1</sup>				
	2015	2016	2017	2018	2019
15-19	1	0	0	0	0
20-24	7	4	1	2	4
25-29	11	14	12	6	8
30-34	14	14	13	9	7
35-39	9	8	8	7	7
40-44	8	12	6	3	6
45-49	8	13	7	7	8
50-54	17	4	5	7	3
55-59	2	4	2	4	4
60-64	1	3	1	3	2
65-69	1	2	2	1	1
70 +	1	2	0	0	0
Missing Data	0	0	0	0	0
<b>Total Drivers</b>	<b>80</b>	<b>80</b>	<b>57</b>	<b>49</b>	<b>50</b>

<sup>1</sup> Values are based upon the year of the conviction.

**Table 25: Court Disposition of DWI Arrests for Eddy County and the State, 2019**

Court Disposition of DWI Arrest <sup>1</sup>	Eddy County	Statewide	Percent of Statewide
Total DWI Arrests	304	10,376	2.9%
DWI Arrests Resulting in Convictions	155	4,597	3.4%
DWI Arrests Resulting in Dismissals <sup>2</sup>	9	887	1.0%
DWI Arrests Awaiting Disposition	140	4,892	2.9%

<sup>1</sup> These are the number of DWI arrests in 2019 and whether the case resulted in a conviction or dismissal, or is still awaiting court disposition, as reported in the NM MVD Citation Tracking System (CTS) as of July 2020.

<sup>2</sup> For this table, a very small number of "not guilty" rulings may be included in the category Dismissals.

**Table 26: Average Number of Days from Date of DWI Arrest to Date of Court Disposition in Eddy County and the State, 2019**

Court Disposition	Average Number of Days		Deviation from Statewide Average
	Eddy County	Statewide	
DWI Conviction	136	159	-23
DWI Dismissal	124	160	-36

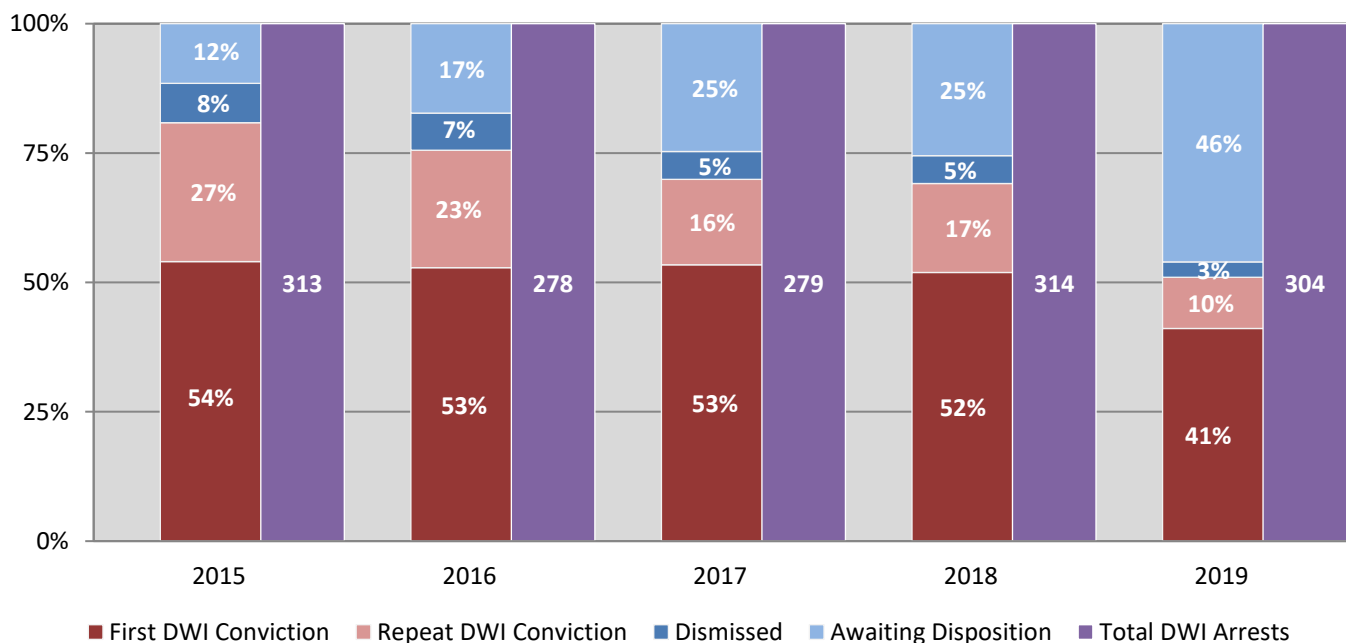


**Table 27: Court Disposition of DWI Arrests in Eddy County, 2015-2019**

Year of DWI Arrest <sup>1</sup>	Court Disposition				Total DWI Arrests
	First DWI Conviction	Repeat DWI Conviction	Dismissed	Awaiting Disposition	
2015	169	84	24	36	313
2016	147	63	20	48	278
2017	149	46	15	69	279
2018	163	54	17	80	314
2019	125	30	9	140	304

<sup>1</sup> Values are based upon the year of the arrest.

**Figure 14: Court Dispositions by Percentage of DWI Arrests in Eddy County, 2015-2019**



\*Table 27 contains the values used to calculate percentages shown in Figure 14.