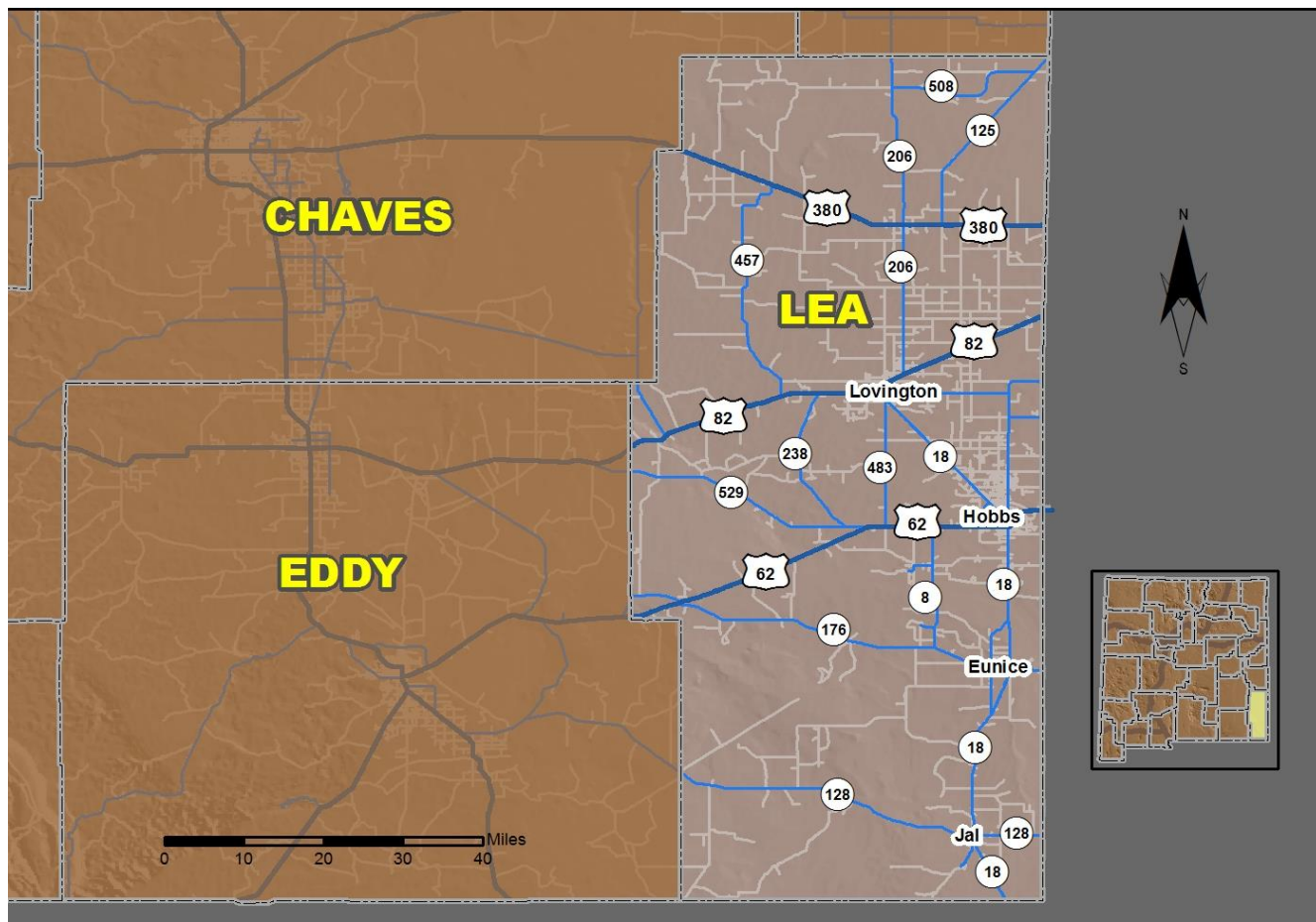


# 2020 Community Report

## Lea County



Produced for the New Mexico Department of Transportation,  
Traffic Safety Division, Traffic Records Bureau,  
Under Contract 6093 by the University of New Mexico,  
Geospatial and Population Studies, Traffic Research Unit

Distributed in compliance with New Mexico Statute 66-7-214  
as a reference source regarding New Mexico traffic crashes

For the purposes of this report, data are compiled by the University of New Mexico, Geospatial and Population Studies, Traffic Research Unit (TRU), on behalf of the New Mexico Department of Transportation (NMDOT). Data in this report may differ from that in other data sources, such as the Federal Fatality Analysis Reporting System (FARS), due to the timing of publications and rules for how data are compiled and maintained in Federal vs. State databases. If you have questions regarding this report, please contact the Traffic Safety Division at 505-827-0427.

<https://gps.unm.edu/tru/crash-reports/community-reports>

## Definitions

---

**Aggravated DWI** – An arrest for 1) driving with a BAC of 0.16 or higher, 2) driving under the influence of alcohol or drugs and causing bodily injury to a human being as a result, or 3) driving under the influence of alcohol or drugs and refusing to submit to a BAC test at the time of arrest for DWI.

**Alcohol-involved Crash** – A crash for which the Uniform Crash Report indicated that 1) a DWI citation was issued, 2) alcohol was a contributing factor, or 3) a person in control of a motor vehicle, a pedalcyclist, or a pedestrian was suspected of being under the influence of alcohol.

**Alcohol-involved Driver** – A person in control of a motor vehicle, a pedalcyclist, or a pedestrian who was cited for DWI or indicated on the Uniform Crash Report as being either suspected or determined by testing to be under the influence of alcohol. There can be multiple alcohol-involved drivers in a single alcohol-involved crash.

**Crash** – A reported incident on a public roadway involving one or more motor vehicles that resulted in death, personal injury, or at least \$500 in property damage. Crashes on private property (such as a parking lot) are not included.

**DWI Arrest (Citation)** – An arrest for either DWI or aggravated DWI. New Mexico's legal limit for presumption of driving while intoxicated (DWI) is 0.08 BAC for non-commercial drivers older than 21 years of age, 0.04 for commercial vehicle drivers, and 0.02 for drivers younger than 21 years of age.

**DWI Conviction** – A conviction for driving under the intoxicating influence of alcohol, narcotics, or pathogenic drugs, including for aggravated DWI.

**Fatal Crash** – A crash in which at least one person was killed. More than one person can be killed in a single fatal crash.

**Fatalities** – The number of people killed in a crash. The terms "killed" and "deaths" are synonymous with "fatalities." A fatality is crash-related if it occurs at the time of the crash or if a person involved in the crash dies within 30 days.

**First Harmful Event** – The event of the crash that produced the first injury or damage. First harmful event (FHE) replaced Crash Classification starting in 2020. FHE and its' subanalysis data are derived from Crash Classification and Analysis for crashes that occurred prior to 2020 and for any agencies not using the E July 2018 Uniform Crash Report, which became available in 2020. Statistics for the categories of "Other Non-Motorist" and "Other" are not available prior to 2020.

**Injury Crash** – A reported crash in which at least one person was injured. Injury crashes each involve at least one suspected serious injury (Class A), suspected minor injury (Class B), or possible injury (Class C). Fatal crashes are not included.

**Missing Data** – An indication that the applicable field on the UCR form was left blank or contained an invalid code. Starting with crashes that occurred in 2012, improvements in the identification of missing data in the NMDOT crash database led to an increase in the reported amount of missing data.

**Pedalcyclists, All** – All people on any pedalcycle or in any pedalcycle trailer, and who are involved in a collision with a motor vehicle. Consists of pedalcycle operators and pedalcycle passengers. Historically, "pedalcyclists" included both pedalcycle operators and passengers. A pedalcycle is a mechanism of transport that is powered solely by pedals.

**Pedestrians, All** – All persons not occupying either a motor vehicle or a pedalcycle, and who are involved in a collision with a motor vehicle. Historically, "pedestrians" have also included people on personal conveyances (e.g., wheelchair or skateboard).

## Sources

---

**Crash Data** – New Mexico Department of Transportation, Traffic Safety Division, Traffic Records Bureau, Traffic Crash Database, as of the report date below. Crash data are compiled using NMDOT Uniform Crash Reports (UCR), submitted by law enforcement agencies in the state, for any incident on a public roadway involving one or more motor vehicles that resulted in death, injury, or at least \$500 in property damage. These reports are processed by the NMDOT Traffic Records Bureau and analyzed by the University of New Mexico, Geospatial and Population Studies, Traffic Research Unit (TRU).

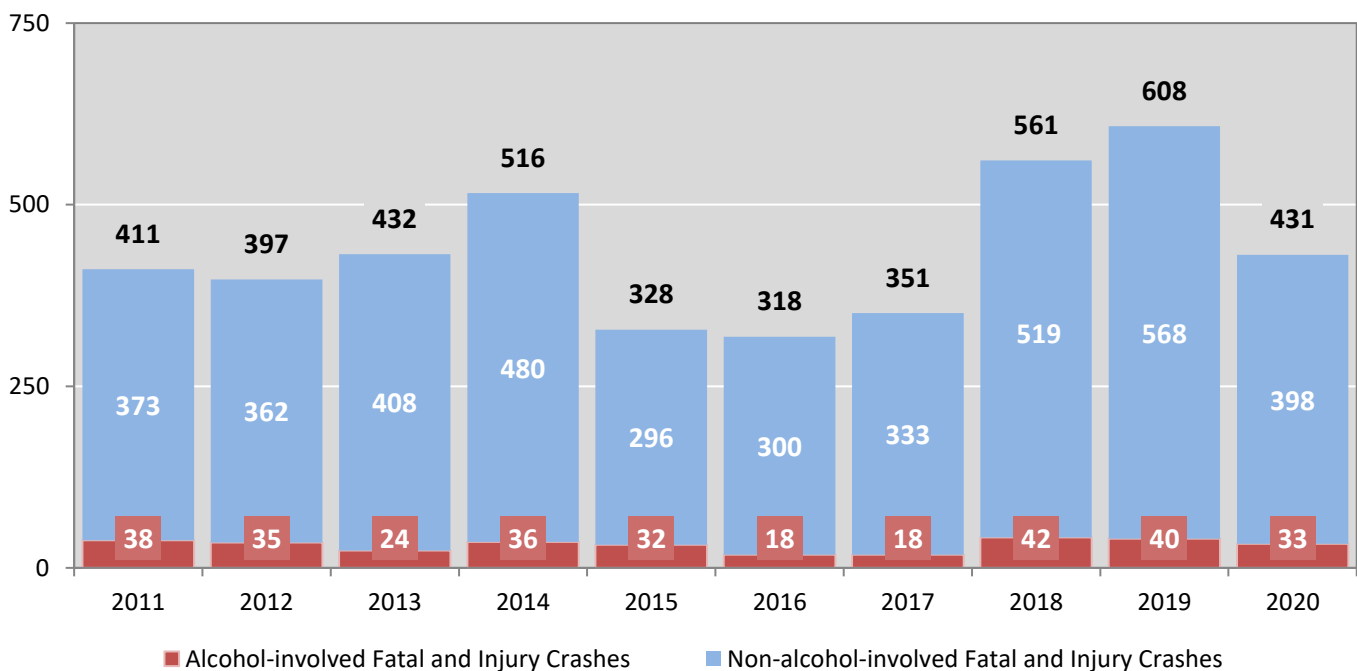
**DWI Arrest Data** – New Mexico Taxation and Revenue Department, Motor Vehicle Division, DWI File, as of the date listed in the footnote of Table 32. Repeat offenders are identified by the combination of account key, arrest date, and citation number. County data are based upon the county where the arrest took place. City data are based upon the city where the offender resides.

**Urban Areas** – Areas defined by the New Mexico Department of Transportation, Asset Management and Planning, 2010 U.S. Census Urbanized Area Boundaries, NMDOT-Adjusted, and U.S. Census Urban Clusters, August 21, 2013. Urban areas for crash years 2013-2017 include a 1/2 mile buffer extending out from those urban boundaries. In crashes before 2013, "urban" was defined as a town or city with a population of at least 2,500 people.

**Table 1: Total Crashes and Alcohol-involved Crashes by Crash Severity in Lea County, 2011-2020**

Year	Total Crashes				Alcohol-involved Crashes			
	Fatal	Injury	Property Damage Only	Total	Fatal	Injury	Property Damage Only	Total
2011	11	400	1,036	<b>1,447</b>	6	32	45	<b>83</b>
2012	17	380	986	<b>1,383</b>	6	29	37	<b>72</b>
2013	11	421	851	<b>1,283</b>	4	20	32	<b>56</b>
2014	28	488	875	<b>1,391</b>	7	29	33	<b>69</b>
2015	12	316	692	<b>1,020</b>	4	28	18	<b>50</b>
2016	11	307	689	<b>1,007</b>	5	13	21	<b>39</b>
2017	14	337	702	<b>1,053</b>	3	15	19	<b>37</b>
2018	26	535	1,202	<b>1,763</b>	11	31	35	<b>77</b>
2019	18	590	1,329	<b>1,937</b>	9	31	42	<b>82</b>
2020	13	418	971	<b>1,402</b>	3	30	32	<b>65</b>

**Figure 1: Alcohol-involved Fatal and Injury Crashes Compared with Non-alcohol-involved Fatal and Injury Crashes in Lea County, 2011-2020**



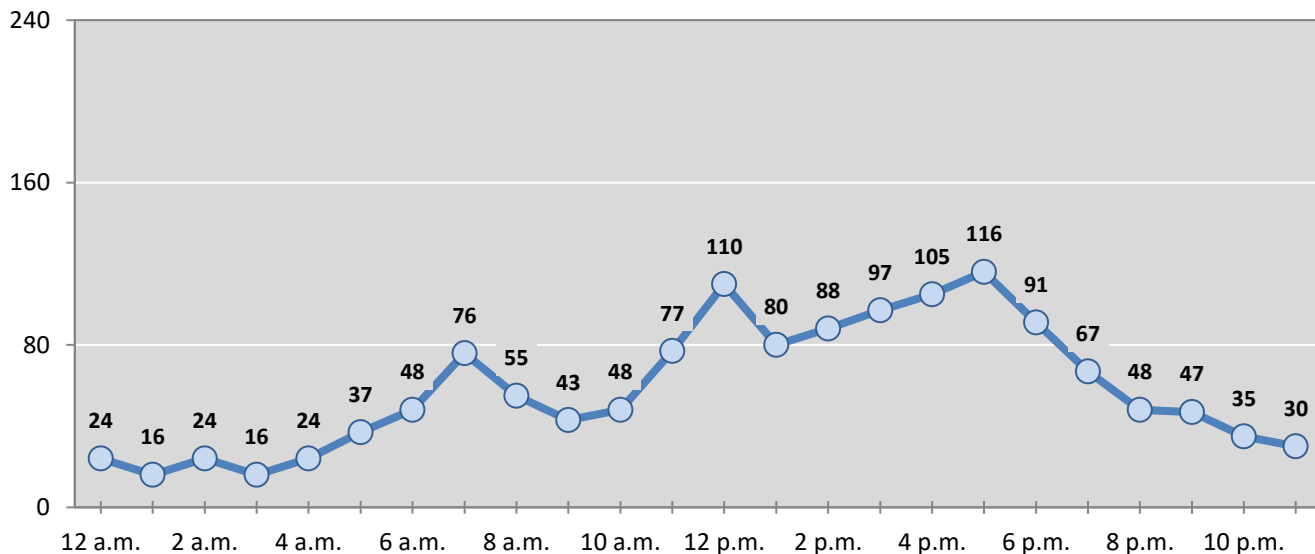
**Table 2: Crashes by Month in Lea County, 2016-2020**

Month	Crashes					5-Year Average
	2016	2017	2018	2019	2020	
January	88	62	124	144	170	<b>118</b>
February	85	63	114	122	146	<b>106</b>
March	91	91	141	157	145	<b>125</b>
April	77	81	118	183	88	<b>109</b>
May	82	84	177	163	89	<b>119</b>
June	73	91	125	150	109	<b>110</b>
July	64	81	149	164	91	<b>110</b>
August	83	106	154	167	153	<b>133</b>
September	88	68	174	166	123	<b>124</b>
October	91	110	175	205	98	<b>136</b>
November	97	101	149	162	94	<b>121</b>
December	88	115	163	154	96	<b>123</b>
<b>Total Crashes</b>	<b>1,007</b>	<b>1,053</b>	<b>1,763</b>	<b>1,937</b>	<b>1,402</b>	<b>1,432</b>

**Table 3: Alcohol-involved Crashes by Month in Lea County, 2016-2020**

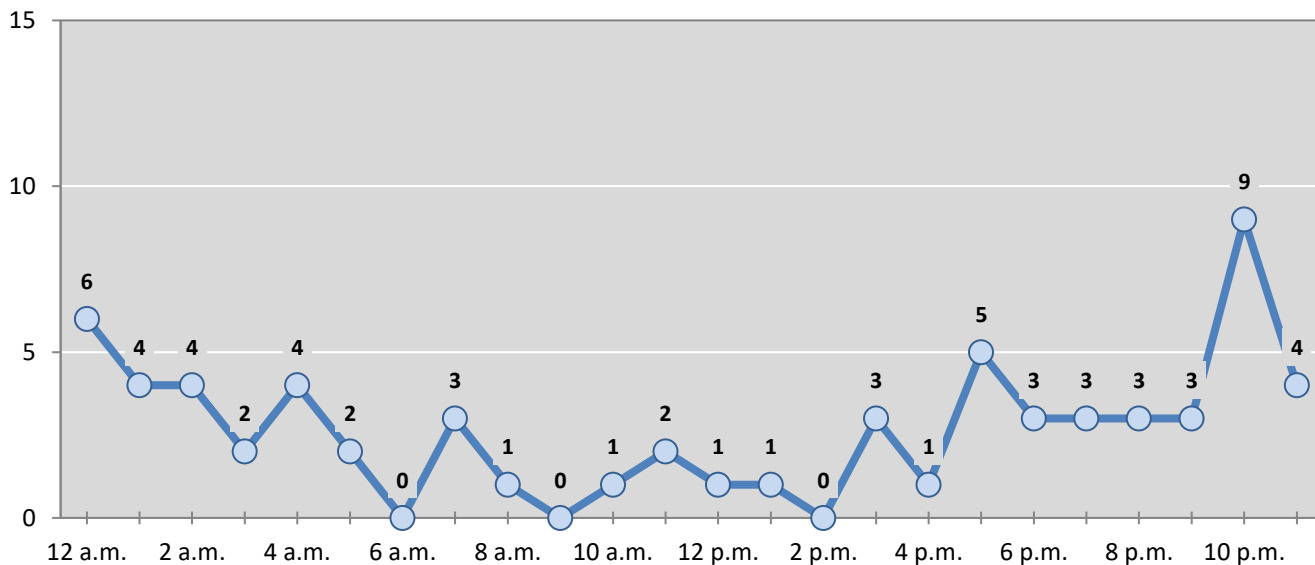
Month	Alcohol-involved Crashes					5-Year Average
	2016	2017	2018	2019	2020	
January	2	7	10	5	6	<b>6</b>
February	3	4	2	7	6	<b>4</b>
March	2	4	9	5	7	<b>5</b>
April	4	1	8	5	3	<b>4</b>
May	5	3	3	7	10	<b>6</b>
June	5	1	5	7	2	<b>4</b>
July	2	4	3	8	4	<b>4</b>
August	1	1	8	10	6	<b>5</b>
September	4	2	9	8	5	<b>6</b>
October	4	3	2	7	2	<b>4</b>
November	3	3	9	5	8	<b>6</b>
December	4	4	9	8	6	<b>6</b>
<b>Total Crashes</b>	<b>39</b>	<b>37</b>	<b>77</b>	<b>82</b>	<b>65</b>	<b>60</b>

**Figure 2: Crashes by Hour in Lea County, 2020**



\* In 2020, Lea County had 0 crashes for which hour data were missing.

**Figure 3: Alcohol-involved Crashes by Hour in Lea County, 2020**



\* In 2020, Lea County had 0 alcohol-involved crashes for which hour data were missing.

**Table 4: Total Crashes by Day of Week in Lea County, 2016-2020**

Day of Week	Total Crashes					5-Year Average
	2016	2017	2018	2019	2020	
Sunday	94	110	161	194	154	<b>143</b>
Monday	161	165	267	296	227	<b>223</b>
Tuesday	173	174	279	293	189	<b>222</b>
Wednesday	153	170	276	336	230	<b>233</b>
Thursday	140	154	273	289	224	<b>216</b>
Friday	164	156	293	306	228	<b>229</b>
Saturday	122	124	214	223	150	<b>167</b>
<b>Total Crashes</b>	<b>1,007</b>	<b>1,053</b>	<b>1,763</b>	<b>1,937</b>	<b>1,402</b>	<b>1,432</b>

**Table 5: Heavy-truck Crashes by Day of Week in Lea County, 2016-2020**

Day of Week	Heavy-truck Crashes					5-Year Average
	2016	2017	2018	2019	2020	
Sunday	8	10	20	18	9	<b>13</b>
Monday	27	20	38	30	47	<b>32</b>
Tuesday	26	28	36	54	25	<b>34</b>
Wednesday	14	23	32	46	35	<b>30</b>
Thursday	14	22	39	40	31	<b>29</b>
Friday	19	19	44	43	29	<b>31</b>
Saturday	14	20	21	31	19	<b>21</b>
<b>Total Crashes</b>	<b>122</b>	<b>142</b>	<b>230</b>	<b>262</b>	<b>195</b>	<b>190</b>

**Table 6: Motorcycle Crashes by Day of Week in Lea County, 2016-2020**

Day of Week	Motorcycle Crashes <sup>1</sup>					5-Year Average
	2016	2017	2018	2019	2020	
Sunday	2	0	4	5	6	<b>3</b>
Monday	2	2	3	3	0	<b>2</b>
Tuesday	4	2	5	3	2	<b>3</b>
Wednesday	4	4	7	3	5	<b>5</b>
Thursday	1	1	5	4	6	<b>3</b>
Friday	5	0	4	3	3	<b>3</b>
Saturday	7	2	6	6	5	<b>5</b>
<b>Total Crashes</b>	<b>25</b>	<b>11</b>	<b>34</b>	<b>27</b>	<b>27</b>	<b>25</b>

<sup>1</sup> "Motorcycles" exclude ATVs.

**Table 7: Alcohol-involved Crashes by Day of Week in Lea County, 2016-2020**

Day of Week	Alcohol-involved Crashes					5-Year Average
	2016	2017	2018	2019	2020	
Sunday	12	13	14	14	13	13
Monday	6	2	9	11	11	8
Tuesday	2	4	9	5	5	5
Wednesday	5	5	9	9	7	7
Thursday	4	3	8	13	9	7
Friday	0	4	8	13	9	7
Saturday	10	6	20	17	11	13
<b>Total Crashes</b>	<b>39</b>	<b>37</b>	<b>77</b>	<b>82</b>	<b>65</b>	<b>60</b>

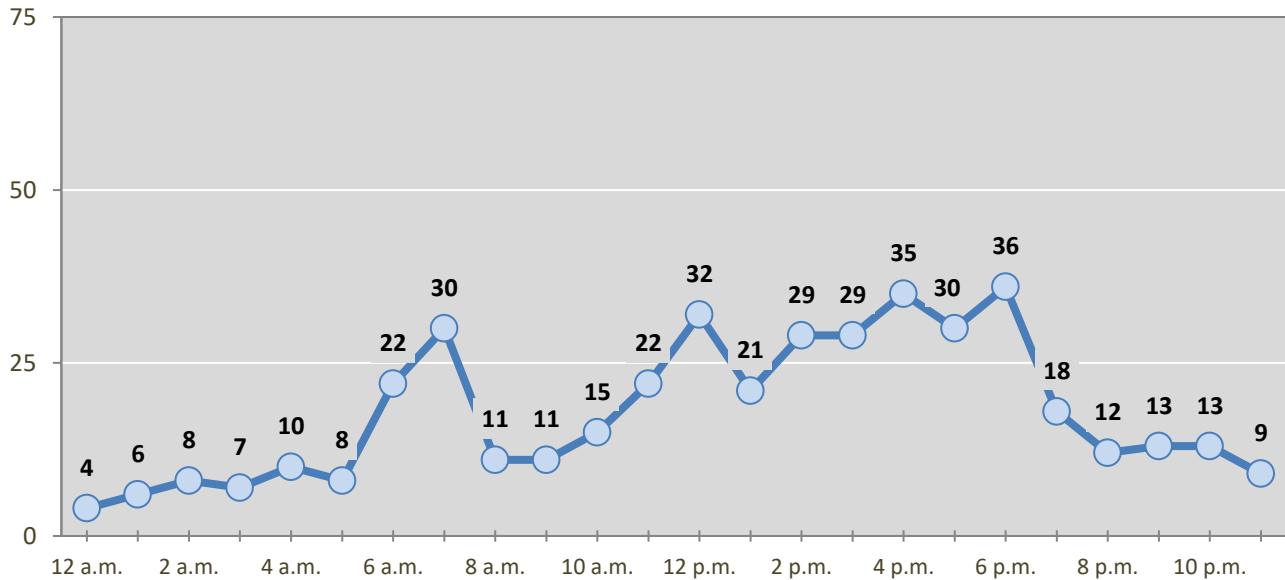
**Table 8: Fatal and Injury Crashes by Day of Week in Lea County, 2016-2020**

Day of Week	Fatal and Injury Crashes					5-Year Average
	2016	2017	2018	2019	2020	
Sunday	36	37	48	57	43	44
Monday	48	59	92	102	72	75
Tuesday	63	58	86	83	57	69
Wednesday	45	58	95	96	63	71
Thursday	36	47	86	93	76	68
Friday	52	51	85	103	72	73
Saturday	38	41	69	74	48	54
<b>Total Crashes</b>	<b>318</b>	<b>351</b>	<b>561</b>	<b>608</b>	<b>431</b>	<b>454</b>

**Table 9: All Pedestrian and Pedalcycle Crashes by Day of Week in Lea County, 2016-2020**

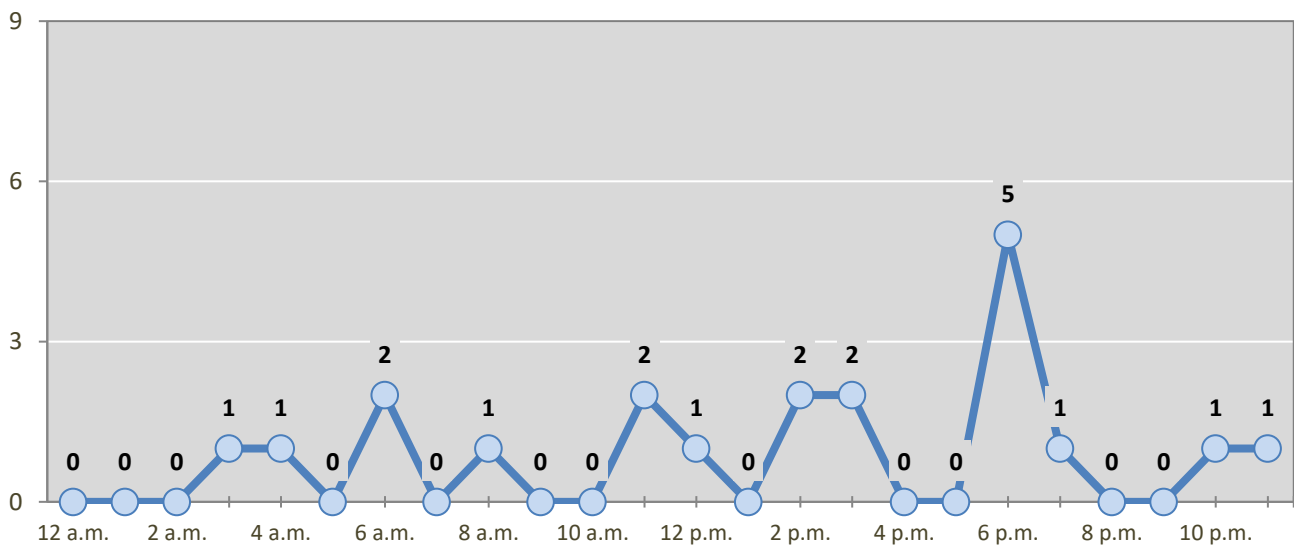
Day of Week	All Pedestrian and Pedalcycle Crashes					5-Year Average
	2016	2017	2018	2019	2020	
Sunday	2	2	3	3	1	2
Monday	3	3	4	6	3	4
Tuesday	5	3	3	2	3	3
Wednesday	1	2	4	4	0	2
Thursday	0	3	6	2	1	2
Friday	1	1	3	4	8	3
Saturday	2	1	3	4	4	3
<b>Total Crashes</b>	<b>14</b>	<b>15</b>	<b>26</b>	<b>25</b>	<b>20</b>	<b>20</b>

**Figure 4: Fatal and Injury Crashes by Hour in Lea County, 2020**



\* In 2020, Lea County had 0 crashes for which hour data were missing.

**Figure 5: All Pedestrian and Pedalcycle Crashes by Hour in Lea County, 2020**



\* In 2020, Lea County had 0 crashes for which hour data were missing.



**Table 10: Severity of Injuries to People in Crashes by Rural and Urban Locations and Alcohol Involvement in Lea County, 2020**

Rural and Urban Locations by Alcohol Involvement	People in Crashes by Severity of Injuries					Total People
	Fatalities (Class K)	Suspected Serious Injuries (Class A)	Suspected Minor Injuries (Class B)	Possible Injuries (Class C)	No Apparent Injuries (Class O)	
<b>People in Alcohol-involved Crashes</b>	<b>3</b>	<b>3</b>	<b>18</b>	<b>24</b>	<b>90</b>	<b>138</b>
Urban	0	3	15	14	77	109
Rural Non-Interstate	3	0	3	10	13	29
Rural Interstate	0	0	0	0	0	0
<b>People in Crashes</b>	<b>14</b>	<b>39</b>	<b>170</b>	<b>353</b>	<b>2,710</b>	<b>3,286</b>
Urban	2	12	94	268	1,995	2,371
Rural Non-Interstate	12	27	76	85	715	915
Rural Interstate	0	0	0	0	0	0
<b>Percent in Alcohol-involved Crashes</b>	<b>21%</b>	<b>8%</b>	<b>11%</b>	<b>7%</b>	<b>3%</b>	<b>4%</b>

**Table 11: Total Crashes by Rural and Urban Locations and Crash Severity in Lea County, 2016-2020**

Crash Severity by Rural and Urban Locations	Crashes by Year					5-Year Average
	2016	2017	2018	2019	2020	
<b>Total Rural Interstate</b>	<b>0</b>	<b>0</b>	<b>0</b>	<b>0</b>	<b>0</b>	<b>0</b>
Fatal Crash	0	0	0	0	0	0
Injury Crash	0	0	0	0	0	0
Property Damage Only Crash	0	0	0	0	0	0
<b>Total Rural Non-Interstate</b>	<b>340</b>	<b>327</b>	<b>608</b>	<b>694</b>	<b>470</b>	<b>488</b>
Fatal Crash	9	10	22	17	11	14
Injury Crash	86	89	176	189	140	136
Property Damage Only Crash	245	228	410	488	319	338
<b>Total Urban</b>	<b>667</b>	<b>726</b>	<b>1,155</b>	<b>1,243</b>	<b>932</b>	<b>945</b>
Fatal Crash	2	4	4	1	2	3
Injury Crash	221	248	359	401	278	301
Property Damage Only Crash	444	474	792	841	652	641

**Table 12: Total Crashes by First Harmful Event in Lea County, 2016-2020**

First Harmful Event <sup>1</sup>	Total Crashes by Year					5-Year Average
	2016	2017	2018	2019	2020	
<b>Collision with Animal</b>	74	59	51	75	72	<b>66</b>
<b>Collision with Fixed Object</b>	87	78	121	122	156	<b>113</b>
<b>Collision with Motor Vehicle</b>	715	801	1,380	1,559	1,020	<b>1,095</b>
<b>Collision with Other Non-Fixed Object</b>	9	23	55	45	40	<b>34</b>
<b>Collision with Person</b>	14	15	26	25	16	<b>19</b>
Pedalcycle	6	2	6	8	6	<b>6</b>
Pedestrian	6	12	20	17	10	<b>13</b>
Other Non-Motorist	0	0	0	0	0	<b>0</b>
Missing Subanalysis Data	2	1	0	0	0	<b>1</b>
<b>Non-Collision</b>	107	77	129	106	85	<b>101</b>
Overturn/Rollover	73	46	108	81	68	<b>75</b>
All Other Non-Collision	34	31	21	25	17	<b>26</b>
<b>Other</b>	0	0	0	0	7	<b>7</b>
<b>Missing Data</b>	1	0	1	5	6	<b>3</b>
<b>Total Crashes</b>	<b>1,007</b>	<b>1,053</b>	<b>1,763</b>	<b>1,937</b>	<b>1,402</b>	<b>1,432</b>

<sup>1</sup> The options of “Other Non-Motorist” and “Other” were not available before 2020. The addition of options in 2020 decreases the use of previously available options.

**Table 13: Vehicles in Crashes by Vehicle Type in Lea County, 2016-2020**

Vehicle Type <sup>1</sup>	Vehicles in Crashes by Vehicle Type					5-Year Average
	2016	2017	2018	2019	2020	
Buses	4	3	6	5	3	<b>4</b>
Motorcycles/ATVs	28	13	36	34	35	<b>29</b>
Passenger Cars	642	807	1,443	1,634	1,076	<b>1,120</b>
Pedalcycles	6	2	6	8	10	<b>6</b>
Pedestrians, All	8	14	21	17	10	<b>14</b>
Pickups	540	559	986	1,099	794	<b>796</b>
Semis/Heavy Trucks	142	162	261	289	215	<b>214</b>
Vans/SUVs/4WDs	311	309	447	467	361	<b>379</b>
Other Vehicles	4	1	12	2	2	<b>4</b>
Missing Data	89	54	31	118	24	<b>63</b>
<b>Total Vehicles</b>	<b>1,774</b>	<b>1,924</b>	<b>3,249</b>	<b>3,673</b>	<b>2,530</b>	<b>2,630</b>

<sup>1</sup> Pedestrians and pedalcycles are counted as non-motorized vehicles, when involved in a crash with a motor vehicle. "All pedestrians" encompasses pedestrians with or without personal conveyance (e.g., wheelchair, skateboard). See Page 18 for more data on non-motorized vehicles in crashes.

**Table 14: Motor Vehicle Drivers in Crashes by Vehicle Type and Age Group in Lea County, 2020**

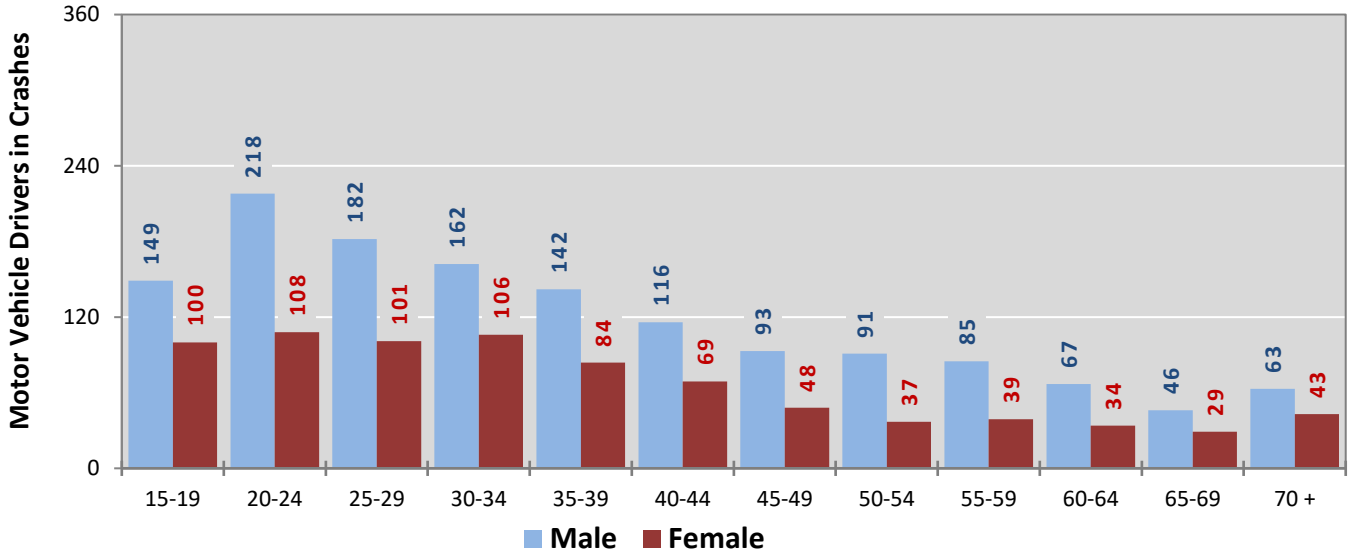
Age Groups	Motor Vehicle <sup>1</sup> Drivers by Vehicle Type and Age Group								Total Drivers
	Bus	Motor-cycle/ATV	Passenger	Pickup	Semi/Heavy Truck	Van 4WD SUV	Other Vehicle	Missing Data	
15-19	0	3	153	65	5	23	0	0	249
20-24	0	10	175	102	11	29	0	0	327
25-29	0	7	129	82	22	44	0	0	284
30-34	0	1	101	88	28	49	0	1	268
35-39	0	5	70	84	29	40	0	0	228
40-44	0	3	76	52	16	36	1	1	185
45-49	0	1	57	46	18	19	0	0	141
50-54	1	0	31	47	22	27	0	0	128
55-59	0	1	40	46	22	14	0	1	124
60-64	1	1	37	29	16	17	0	0	101
65-69	0	0	34	18	11	12	0	0	75
70 +	0	0	48	38	2	18	0	0	106
Missing Data	1	3	125	97	13	33	1	21	294
<b>Total Drivers</b>	<b>3</b>	<b>35</b>	<b>1,076</b>	<b>794</b>	<b>215</b>	<b>361</b>	<b>2</b>	<b>24</b>	<b>2,510</b>

**Table 15: Alcohol-involved Motor Vehicle Drivers in Crashes by Vehicle Type and Age Group in Lea County, 2020**

Age Groups	Alcohol-involved Motor Vehicle <sup>1</sup> Drivers by Vehicle Type and Age Group								Total Drivers
	Bus	Motor-cycle/ATV	Passenger	Pickup	Semi/Heavy Truck	Van 4WD SUV	Other Vehicle	Missing Data	
15-19	0	0	4	2	0	0	0	0	6
20-24	0	1	8	4	0	2	0	0	15
25-29	0	0	9	3	0	2	0	0	14
30-34	0	0	6	2	1	2	0	0	11
35-39	0	0	4	2	0	0	0	0	6
40-44	0	0	2	4	0	1	0	0	7
45-49	0	1	3	0	0	0	0	0	4
50-54	0	0	0	0	0	0	0	0	0
55-59	0	0	0	1	0	0	0	0	1
60-64	0	0	0	0	0	0	0	0	0
65-69	0	0	0	2	0	0	0	0	2
70 +	0	0	0	0	0	0	0	0	0
Missing Data	0	0	0	0	0	0	0	0	0
<b>Total Drivers</b>	<b>0</b>	<b>2</b>	<b>36</b>	<b>20</b>	<b>1</b>	<b>7</b>	<b>0</b>	<b>0</b>	<b>66</b>

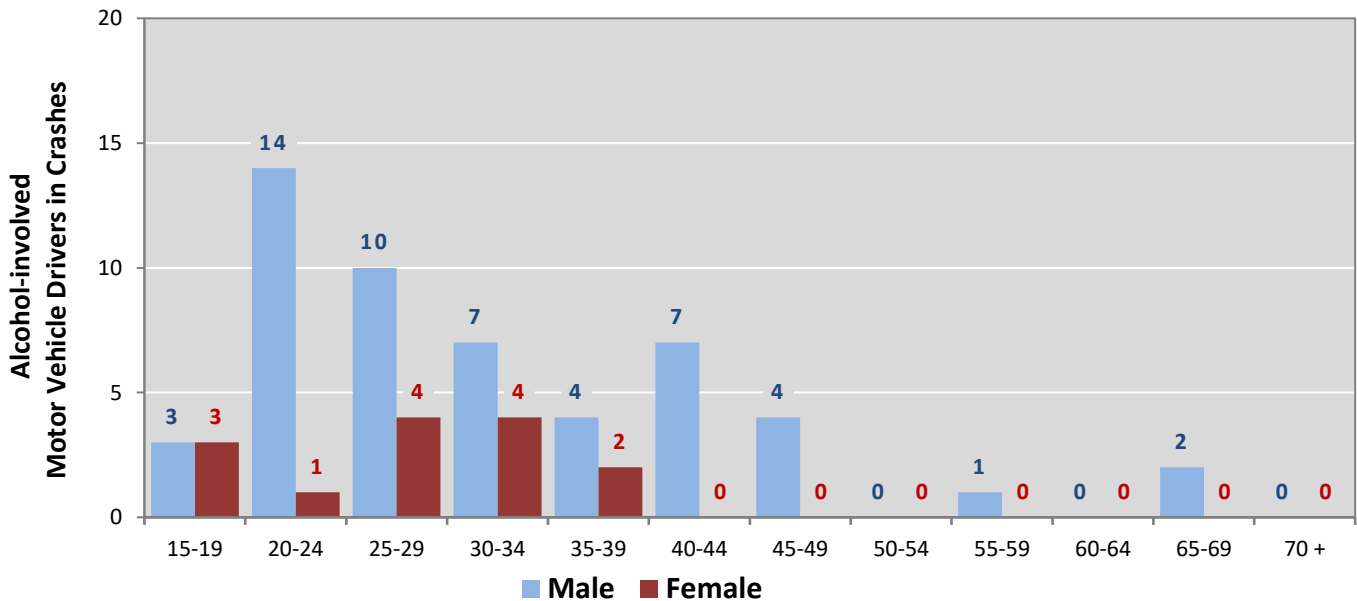
<sup>1</sup> See Page 18 for data on drivers of non-motorized vehicles in crashes (i.e. pedestrians and pedalcyclists).

**Figure 6: Motor Vehicle Drivers in Crashes by Age Group and Sex in Lea County, 2020**



\* In 2020, Lea County had 298 drivers in crashes for which age or sex data were missing.

**Figure 7: Alcohol-involved Motor Vehicle Drivers in Crashes by Age Group and Sex in Lea County, 2020**



\* In 2020, Lea County had 0 drivers in crashes for which age or sex data were missing.

**Table 16: Alcohol-involved Motor Vehicle Drivers Under 21 (Ages 15-20) in Crashes in Lea County, 2016-2020**

Age <sup>1</sup>	Year					5-Year Total
	2016	2017	2018	2019	2020	
15	0	0	0	0	0	0
16	0	0	0	0	0	0
17	2	0	0	1	2	5
18	0	2	2	2	2	8
19	1	1	2	1	2	7
20	1	0	4	5	1	11
<b>Total Drivers</b>	<b>4</b>	<b>3</b>	<b>8</b>	<b>9</b>	<b>7</b>	<b>31</b>

**Table 17: Motor Vehicle Drivers Under 21 (Ages 15-20) in Crashes by Age, Sex and Alcohol Involvement in Lea County, 2020**

Age <sup>1</sup>	Total Drivers				Alcohol-involved Drivers			
	Sex		Total Drivers	Percent of Total	Sex		Total Drivers	Percent of Total
	Male	Female			Male	Female		
15	18	10	28	9%	0	0	0	0%
16	22	23	45	14%	0	0	0	0%
17	27	18	45	14%	1	1	2	29%
18	31	19	50	15%	1	1	2	29%
19	51	30	81	25%	1	1	2	29%
20	47	32	79	24%	1	0	1	14%
<b>Total Drivers</b>	<b>196</b>	<b>132</b>	<b>328</b>	<b>100%</b>	<b>4</b>	<b>3</b>	<b>7</b>	<b>100%</b>

<sup>1</sup> For analysis of drivers under age 21, when the driver age or sex are not identified on the crash report (typically hit-and-run drivers), the driver data are considered unreliable and are excluded from the analysis.

**Table 18: Frequency of Contributing Factors in Crashes  
by Crash Severity in Lea County, 2020**

Contributing Factors	Frequency of Contributing Factor <sup>1</sup> by Crash Severity			
	Frequency in Fatal Crashes	Frequency in Injury Crashes	Frequency in Property Damage Only Crashes	Frequency in All Crashes
<b>Human</b>	<b>29</b>	<b>654</b>	<b>1,313</b>	<b>1,996</b>
Driver Inattention	8	167	382	557
Failed to Yield Right of Way	1	137	220	358
Following Too Closely	0	42	110	152
Other Improper Driving	3	42	102	147
Excessive Speed	2	38	52	92
Made Improper Turn	0	19	67	86
Passed Stop Sign	0	31	40	71
Under the Influence Of Alcohol	3	31	32	66
Speed Too Fast For Conditions	1	23	34	58
Improper Backing	0	1	50	51
Avoid No Contact Vehicle	0	13	31	44
Drove Left of Center	4	15	25	44
Disregarded Traffic Signal	0	19	23	42
Improper Lane Change	0	7	34	41
Driver Distracted by Other Activity	0	14	24	38
Improper Overtaking	0	10	20	30
Under the Influence Of Drugs	7	8	11	26
Avoid No Contact Other	0	6	19	25
Cell Phone	0	9	16	25
Vehicle Skidded Before Braking	0	7	7	14
Driver Distracted by Passenger	0	5	4	9
Driver Distracted By Texting	0	0	6	6
Pedestrian Error	0	4	0	4
Failed to Yield For Police Vehicle	0	3	0	3
Driver Distracted by Talking on Cell Phone	0	1	2	3
High-Speed Pursuit	0	1	1	2
Failed to Yield For Emer. Vehicle	0	0	1	1
Driver Distracted by Talking on Hands-Free Device	0	1	0	1
Driverless Moving Vehicle	0	0	0	0
<b>Vehicle</b>	<b>0</b>	<b>22</b>	<b>37</b>	<b>59</b>
Other Mechanical Defect	0	5	15	20
Inadequate Brakes	0	7	11	18
Defective Tires	0	2	8	10
Windows/Windshield	0	5	0	5
Defective Steering	0	1	2	3
Lights (Head, Signal, Tail)	0	2	1	3
Coupling Device (Hitch, Chains)	0	0	0	0
Exhaust System	0	0	0	0
Mirrors	0	0	0	0
Suspension	0	0	0	0
Wheels	0	0	0	0
Wipers	0	0	0	0
<b>Environment</b>	<b>1</b>	<b>11</b>	<b>44</b>	<b>56</b>
Animal(s) In Roadway	0	0	10	10
Backup - Prior Crash	0	0	10	10
Road Surface Conditions	0	0	7	7
Weather Conditions	0	1	5	6
Debris	1	2	2	5
Obstruction in Road	0	2	3	5
Other Visual Obstruction(s)	0	2	3	5
Low Visibility Due to Glare	0	3	1	4
Traffic Congestion	0	1	1	2
Traffic Control Missing	0	0	2	2
Backup - Prior Incident	0	0	0	0
Low Visibility Due to Smoke	0	0	0	0
Road Defect	0	0	0	0
<b>Other</b>	<b>9</b>	<b>379</b>	<b>880</b>	<b>1,268</b>
Other - No Driver Error	5	289	608	902
None	3	67	175	245
Missing Data	1	23	97	121
<b>Total</b>	<b>39</b>	<b>1,066</b>	<b>2,274</b>	<b>3,379</b>

<sup>1</sup> Multiple contributing factors may be reported for any vehicle in a crash.

**Table 19: People in Crashes by First Harmful Event and Severity of Injuries in Lea County, 2020**

First Harmful Event (FHE) and Subanalysis	People in Crashes by Severity of Injuries					Total People
	Fatalities (Class K)	Suspected Serious Injuries (Class A)	Suspected Minor Injuries (Class B)	Possible Injuries (Class C)	No Apparent Injuries (Class O)	
<b>Collision with Animal</b>	<b>0</b>	<b>1</b>	<b>6</b>	<b>5</b>	<b>84</b>	<b>96</b>
Deer	0	0	3	2	40	45
Cattle/Cow	0	1	2	2	26	31
Small Domestic Animal	0	0	1	0	9	10
Antelope	0	0	0	0	3	3
Small Game Animal	0	0	0	0	2	2
Horse	0	0	0	0	1	1
Bear	0	0	0	0	0	0
Elk	0	0	0	0	0	0
Other (Bird, Cougar, Sheep, Goat)	0	0	0	0	0	0
Other Large Domestic Animal	0	0	0	0	0	0
Other Large Game Animal	0	0	0	0	0	0
Missing Subanalysis Data	0	0	0	1	3	4
<b>Collision with Fixed Object</b>	<b>0</b>	<b>4</b>	<b>24</b>	<b>11</b>	<b>162</b>	<b>201</b>
Utility Pole/Light Support	0	0	7	2	33	42
Fence	0	0	2	2	36	40
Other Fixed Object	0	0	3	1	14	18
Curb	0	0	1	1	12	14
Other Post, Pole or Support	0	1	1	1	8	11
Traffic Sign Support	0	0	0	1	9	10
Median	0	0	2	1	2	5
Tree (standing)	0	1	1	0	3	5
Wall or Building	0	0	0	1	4	5
Bridge Pier, Support, Rail, or Overhead	0	0	0	0	3	3
Embankment	0	1	0	0	2	3
Ditch	0	0	0	0	2	2
Guardrail, End or Face	0	0	0	0	1	1
Traffic Barrier, Concrete	0	0	0	0	1	1
Culvert	0	0	0	0	0	0
Traffic Barrier, Cable	0	0	0	0	0	0
Other (incl. hydrant, box, cattle guard, plant)	0	1	7	1	32	41
Missing Subanalysis Data	0	0	0	0	0	0
<b>Collision with Motor Vehicle</b>	<b>8</b>	<b>22</b>	<b>98</b>	<b>306</b>	<b>2,305</b>	<b>2,739</b>
MV in Transport	8	22	88	297	2,075	2,490
Parked MV	0	0	8	9	219	236
Missing Subanalysis Data	0	0	2	0	11	13
<b>Collision with Other Non-Fixed Object</b>	<b>1</b>	<b>0</b>	<b>7</b>	<b>7</b>	<b>58</b>	<b>73</b>
Struck by falling, shifting cargo	1	0	3	3	11	18
Work Zone / Maintenance Equipment	0	0	0	0	2	2
Railway Vehicle	0	0	0	0	0	0
Other Non-fixed Object	0	0	3	4	40	47
Missing Subanalysis Data	0	0	1	0	5	6
<b>Collision with Person</b>	<b>2</b>	<b>3</b>	<b>8</b>	<b>3</b>	<b>21</b>	<b>37</b>
Pedestrian	1	2	6	1	14	24
Pedalcycle	1	1	2	2	7	13
Other Non-Motorist	0	0	0	0	0	0
Missing Subanalysis Data	0	0	0	0	0	0
<b>Non-Collision</b>	<b>3</b>	<b>9</b>	<b>24</b>	<b>20</b>	<b>59</b>	<b>115</b>
Overturn/Rollover	3	9	21	15	41	89
Jackknife	0	0	1	0	3	4
Cargo/Equipment Loss or Shift	0	0	0	0	2	2
Fire/Explosion	0	0	0	0	1	1
Immersion, Full or Partial	0	0	1	0	0	1
Thrown or Falling Object	0	0	0	1	0	1
Fell/Jumped from MV	0	0	0	0	0	0
Other Non-Collision	0	0	1	2	9	12
Missing Subanalysis Data	0	0	0	2	3	5
<b>Other</b>	<b>0</b>	<b>0</b>	<b>3</b>	<b>1</b>	<b>10</b>	<b>14</b>
<b>Missing FHE and Subanalysis Data</b>	<b>0</b>	<b>0</b>	<b>0</b>	<b>0</b>	<b>11</b>	<b>11</b>
<b>Total People</b>	<b>14</b>	<b>39</b>	<b>170</b>	<b>353</b>	<b>2,710</b>	<b>3,286</b>

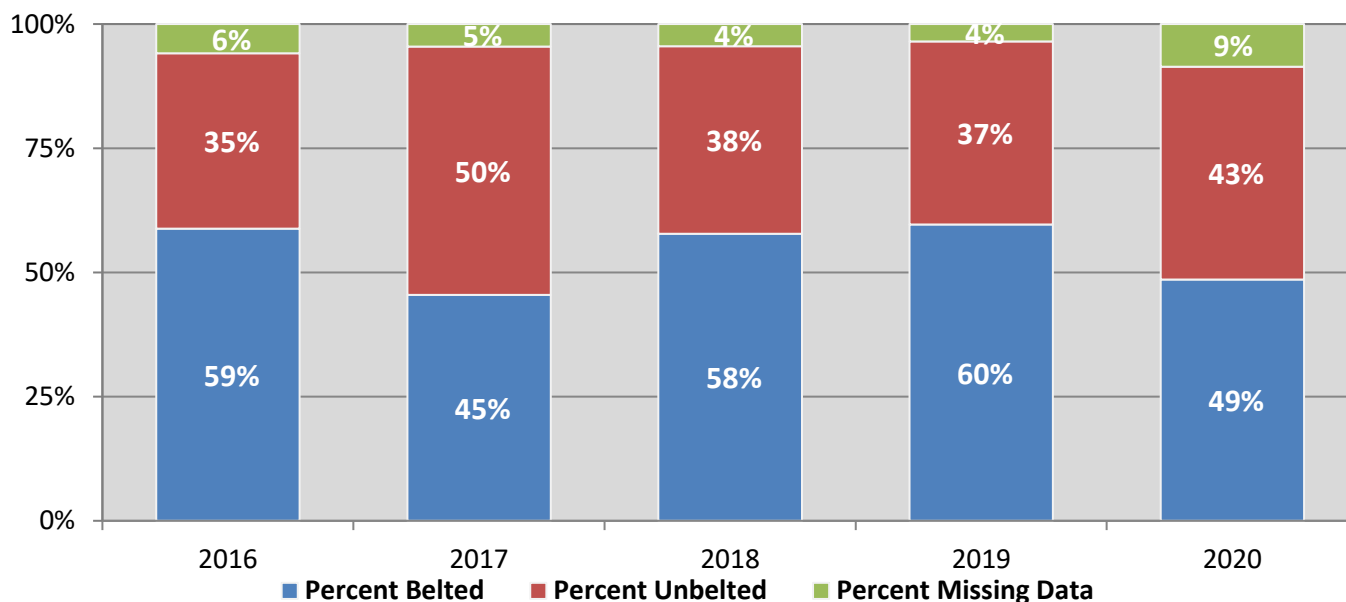
**Table 20: Killed or Injured Unbelted People in Crashes by Sex and Age Group in Lea County, 2020**

Age Groups	Unbelted People Killed or Injured <sup>1,2</sup>				Total People
	Male	Percent of Male	Female	Percent of Female	
0-4	1	3%	0	0%	1
5-9	1	3%	1	5%	2
10-14	0	0%	0	0%	0
15-19	6	17%	5	25%	11
20-24	9	25%	4	20%	13
25-29	5	14%	1	5%	6
30-34	3	8%	2	10%	5
35-39	4	11%	4	20%	8
40-44	1	3%	1	5%	2
45-49	1	3%	0	0%	1
50-54	1	3%	0	0%	1
55-59	1	3%	1	5%	2
60-64	1	3%	1	5%	2
65-69	1	3%	0	0%	1
70 +	1	3%	0	0%	1
Missing Data	0	0%	0	0%	0
<b>Total People</b>	<b>36</b>	<b>100%</b>	<b>20</b>	<b>100%</b>	<b>56</b>

<sup>1</sup> People injured are in one of three categories: suspected serious injury, suspected minor injury, or possible injury.

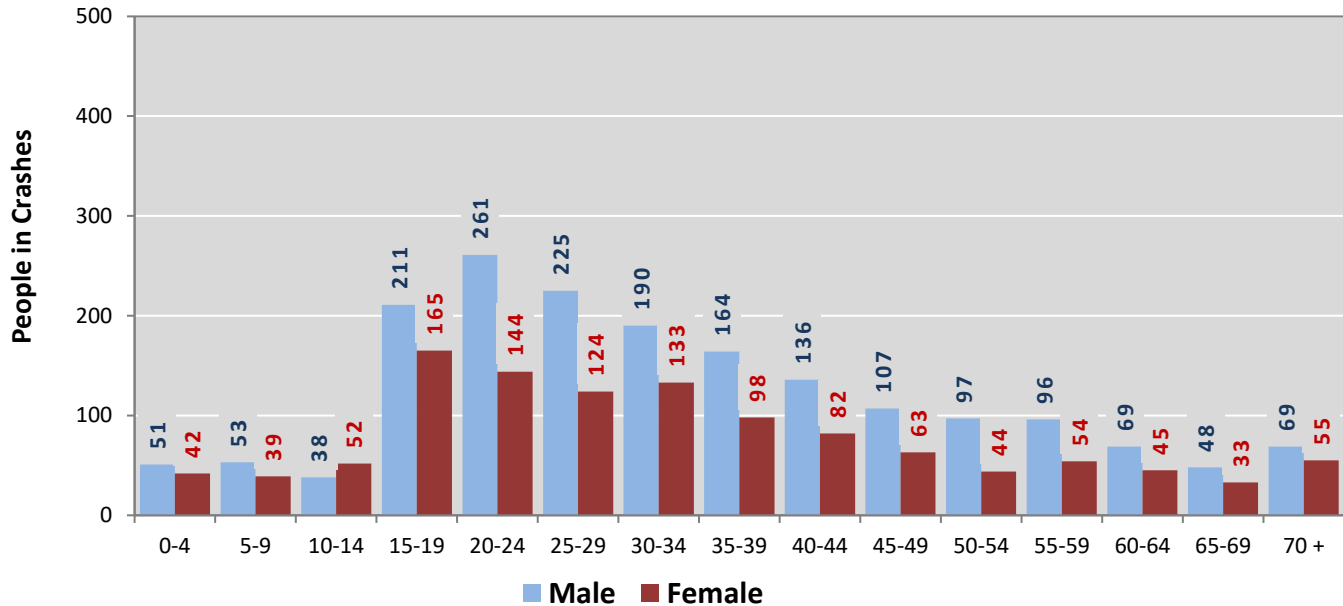
<sup>2</sup> Excludes people in or on buses, heavy trucks, motorcycles, or ATVs.

**Figure 8: Seatbelt Use by People in Crashes with Fatal or Suspected Serious Injuries in Lea County, 2016-2020**



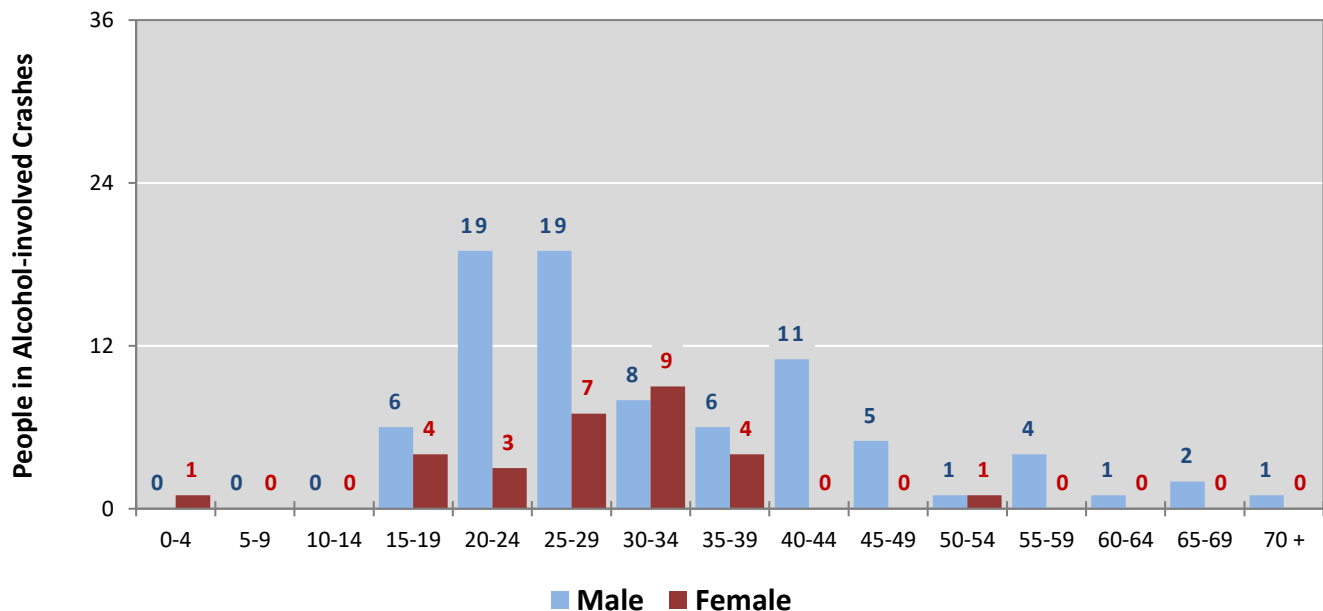


**Figure 9: People in Crashes by Age Group and Sex in Lea County, 2020**



\* In 2020, Lea County had 298 people in crashes for which age or sex data were missing.

**Figure 10: People in Alcohol-involved Crashes by Age Group and Sex in Lea County, 2020**



\* In 2020, Lea County had 26 people in alcohol-involved crashes for which age or sex data were missing.

**Table 21: All Pedestrians and All Pedalcyclists in Crashes by Age Group in Lea County, 2016-2020**

Age Groups	All Pedestrians and All Pedalcyclists <sup>1</sup> in Crashes					5-Year Total People
	2016	2017	2018	2019	2020	
0-4	1	0	1	1	0	3
5-9	1	1	2	1	1	6
10-14	0	2	3	3	1	9
15-19	3	1	6	3	2	15
20-24	3	0	1	1	2	7
25-29	1	2	4	1	0	8
30-34	0	1	1	0	1	3
35-39	0	1	2	5	2	10
40-44	1	2	0	2	2	7
45-49	1	0	1	0	4	6
50-54	0	1	2	1	1	5
55-59	1	2	2	3	1	9
60-64	0	0	1	1	0	2
65-69	0	0	0	1	1	2
70 +	1	1	1	1	1	5
Missing Data	1	2	0	1	1	5
<b>Total People</b>	<b>14</b>	<b>16</b>	<b>27</b>	<b>25</b>	<b>20</b>	<b>102</b>

**Table 22: All Pedestrians and Pedalcycle Operators in Crashes by Alcohol Involvement and Severity of Injuries in Lea County, 2020**

Alcohol Involvement	All Pedestrians and Pedalcycle Operators <sup>1</sup> in Crashes					Total People
	Fatalities (Class K)	Suspected Serious Injuries (Class A)	Suspected Minor Injuries (Class B)	Possible Injuries (Class C)	No Apparent Injury (Class O)	
<b>Pedalcycle Operators</b>	<b>1</b>	<b>2</b>	<b>4</b>	<b>3</b>	<b>0</b>	<b>10</b>
Involved	0	0	0	0	0	0
Not Involved	1	2	4	3	0	10
<b>All Pedestrians</b>	<b>1</b>	<b>2</b>	<b>6</b>	<b>1</b>	<b>0</b>	<b>10</b>
Involved	0	0	0	0	0	0
Not Involved	1	2	6	1	0	10
<b>Total People</b>	<b>2</b>	<b>4</b>	<b>10</b>	<b>4</b>	<b>0</b>	<b>20</b>

<sup>1</sup> "All pedestrians" encompasses pedestrians with and without personal conveyance (e.g., wheelchair, skateboard). "All pedalcyclists" encompasses both pedalcycle operators and pedalcycle passengers. All pedestrians and pedalcycle operators are counted as non-motorized vehicles when involved in a crash with a motor vehicle.

**Table 23: Occupants of Passenger Vehicles in Crashes  
by Severity of Injuries and Belt Usage in Lea County, 2020**

Severity of Injuries	Injury Class	Occupants of Passenger Vehicles <sup>1</sup>			
		Belted	Unbelted	Missing Data	Total
Fatalities	K	3	7	0	10
Suspected Serious Injuries	A	14	8	3	25
Suspected Minor Injuries	B	96	19	10	125
Possible Injuries	C	293	22	15	330
No Apparent Injuries	O	2,051	37	374	2,462
<b>Total Occupants of Passenger Vehicles</b>		<b>2,457</b>	<b>93</b>	<b>402</b>	<b>2,952</b>

<sup>1</sup> Occupants of passenger cars, SUVs, 4WDs, vans, and pickup trucks only.

**Table 24: Motorcyclists in Crashes  
by Severity of Injuries and Helmet Usage in Lea County, 2020**

Severity of Injuries	Injury Class	Motorcyclists in Crashes <sup>1</sup>			
		Helmeted	Unhelmeted	Missing Data	Total
Fatalities	K	0	0	0	0
Suspected Serious Injuries	A	0	2	0	2
Suspected Minor Injuries	B	4	14	1	19
Possible Injuries	C	1	1	2	4
No Apparent Injuries	O	0	1	4	5
<b>Total Motorcyclists</b>		<b>5</b>	<b>18</b>	<b>7</b>	<b>30</b>

<sup>1</sup> Excludes people on ATVs.

**Table 25: Occupants of Passenger Vehicles in Crashes  
by Year, Belt Usage, and Percent Killed in Lea County, 2016-2020**

Year	Occupant Fatalities of Passenger Vehicles <sup>1</sup>				Total Occupants of Passenger Vehicles <sup>1</sup>				Percent Killed	
	Belted	Unbelted	Missing Data	Total Fatalities	Belted	Unbelted	Missing Data	Total Occupants	Belted	Unbelted
2016	3	5	0	8	1,852	33	232	2,117	0.16%	15.2%
2017	2	7	0	9	2,012	56	247	2,315	0.10%	12.5%
2018	12	10	0	22	3,538	97	430	4,065	0.34%	10.3%
2019	11	11	0	22	3,811	92	586	4,489	0.29%	12.0%
2020	3	7	0	10	2,457	93	402	2,952	0.12%	7.5%
<b>Average</b>	<b>6.2</b>	<b>8.0</b>	<b>0.0</b>	<b>14.2</b>	<b>2,734.0</b>	<b>74.2</b>	<b>379.4</b>	<b>3,187.6</b>	<b>0.23%</b>	<b>10.8%</b>

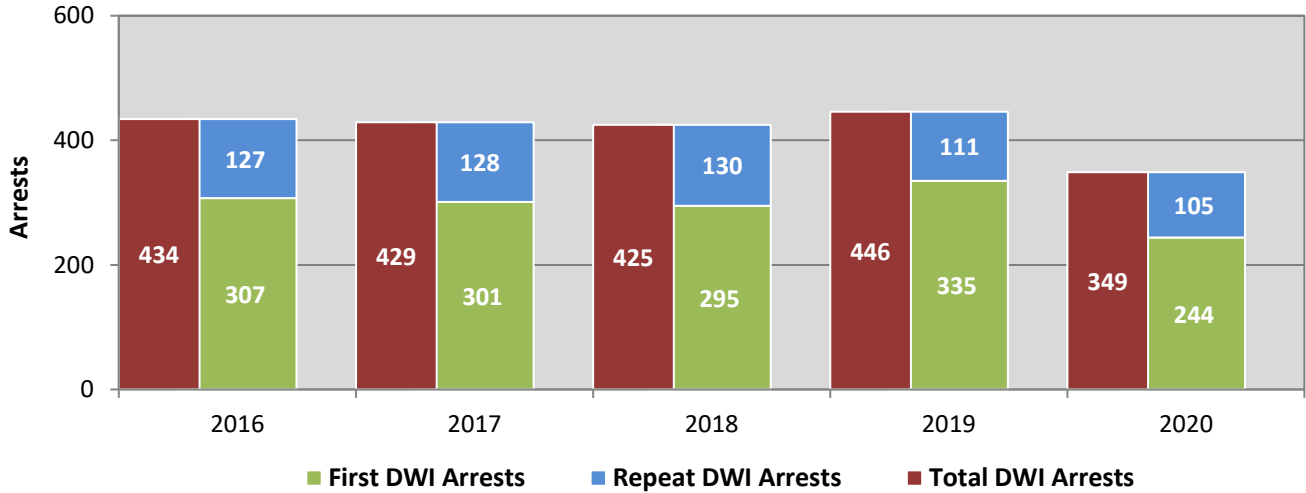
<sup>1</sup> Occupants of passenger cars, SUVs, 4WDs, vans, and pickup trucks only.

**Table 26: Motorcyclists in Crashes  
by Year, Helmet Usage, and Percent Killed in Lea County, 2016-2020**

Year	Motorcyclist Fatalities <sup>1</sup>				Total Motorcyclists <sup>1</sup>				Percent Killed	
	Helmeted	Unhelmeted	Missing Data	Total Fatalities	Helmeted	Unhelmeted	Missing Data	Total Occupants	Helmeted	Unhelmeted
2016	2	0	0	2	13	9	5	27	15.4%	0.0%
2017	0	1	0	1	5	3	3	11	0.0%	33.3%
2018	1	1	0	2	7	19	13	39	14.3%	5.3%
2019	0	0	0	0	6	10	13	29	0.0%	0.0%
2020	0	0	0	0	5	18	7	30	0.0%	0.0%
<b>Average</b>	<b>0.6</b>	<b>0.4</b>	<b>0.0</b>	<b>1.0</b>	<b>7.2</b>	<b>11.8</b>	<b>8.2</b>	<b>27.2</b>	<b>8.3%</b>	<b>3.4%</b>

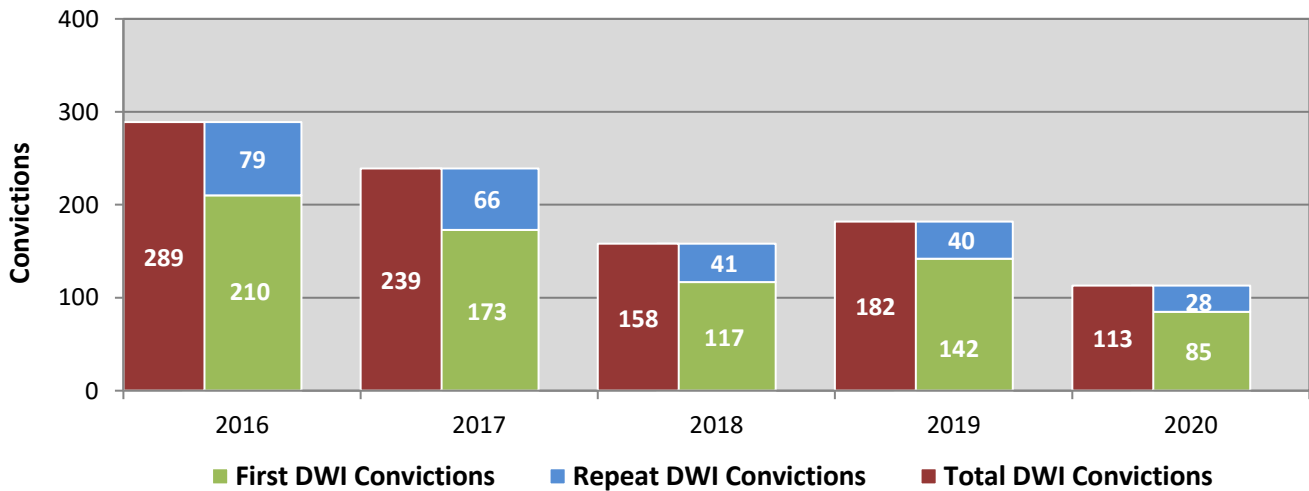
<sup>1</sup> Excludes people on ATVs.

**Figure 11: DWI Arrests in Lea County,  
 Showing First and Repeat DWI Arrests, 2016-2020**



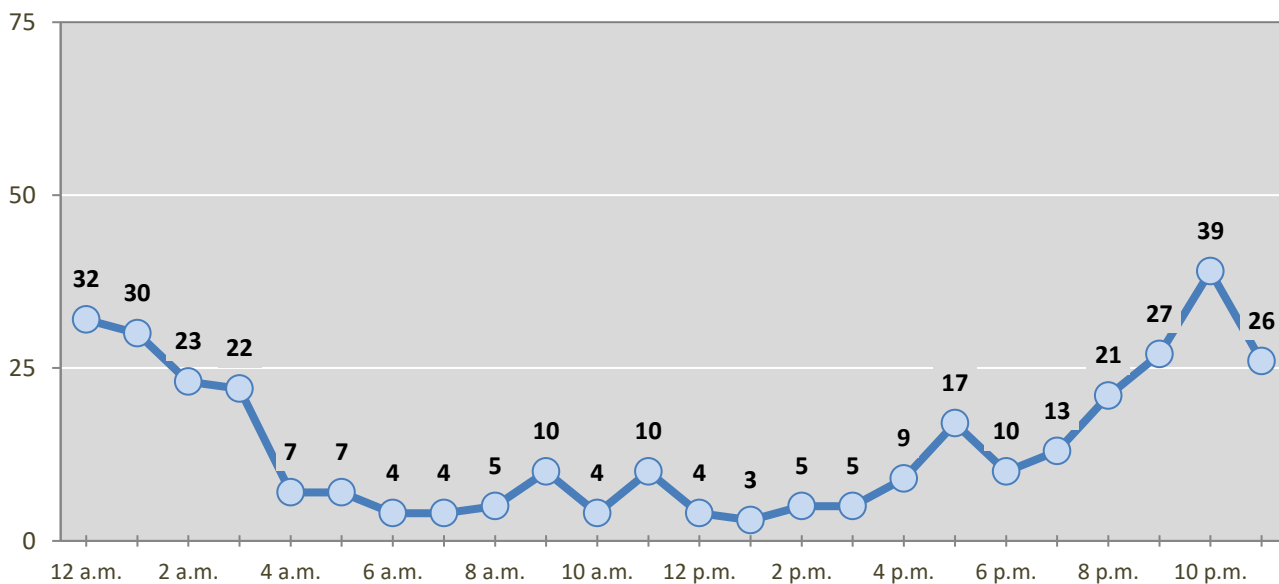
\*Values are based upon the year of the arrest.

**Figure 12: DWI Convictions in Lea County,  
 Showing First and Repeat DWI Convictions, 2016-2020**



\*Values are based upon the year of the conviction.

**Figure 13: DWI Arrests by Hour in Lea County, 2020**



\* In 2020, Lea County had 12 arrests for which hour data were missing.

**Table 27: DWI Arrests by Day of Week in Lea County, 2016-2020**

Day of Week	Year					5-Year Average
	2016	2017	2018	2019	2020	
Sunday	98	130	105	101	90	105
Monday	37	36	35	36	34	36
Tuesday	34	36	41	40	27	36
Wednesday	47	31	38	50	40	41
Thursday	47	46	38	61	41	47
Friday	69	60	62	66	54	62
Saturday	102	90	106	92	63	91
<b>Total Arrests</b>	<b>434</b>	<b>429</b>	<b>425</b>	<b>446</b>	<b>349</b>	<b>417</b>

**Table 28: Driver First DWI Arrests by Age Group in Lea County, 2016-2020**

Age Groups	Driver First DWI Arrests <sup>1</sup>				
	2016	2017	2018	2019	2020
15-19	24	34	25	30	29
20-24	66	68	56	86	54
25-29	60	59	63	66	41
30-34	51	45	45	44	40
35-39	37	36	33	35	27
40-44	27	16	24	22	20
45-49	15	7	20	17	15
50-54	13	20	16	15	7
55-59	5	12	8	12	8
60-64	3	3	1	6	2
65-69	2	0	2	1	1
70 +	4	1	2	1	0
Missing Data	0	0	0	0	0
<b>Total Drivers</b>	<b>307</b>	<b>301</b>	<b>295</b>	<b>335</b>	<b>244</b>

<sup>1</sup> Values are based upon the year of the arrest.

**Table 29: Driver Repeat DWI Arrests by Age Group in Lea County, 2016-2020**

Age Groups	Driver Repeat DWI Arrests <sup>1</sup>				
	2016	2017	2018	2019	2020
15-19	1	3	0	2	5
20-24	12	12	15	16	16
25-29	17	22	13	19	23
30-34	19	19	25	14	12
35-39	15	21	21	15	8
40-44	19	10	17	13	12
45-49	10	12	10	10	10
50-54	16	10	7	7	9
55-59	11	15	15	8	7
60-64	6	1	6	6	2
65-69	1	1	0	0	1
70 +	0	2	1	1	0
Missing Data	0	0	0	0	0
<b>Total Drivers</b>	<b>127</b>	<b>128</b>	<b>130</b>	<b>111</b>	<b>105</b>

<sup>1</sup> Values are based upon the year of the arrest.

**Table 30: Driver First DWI Convictions by Age Group in Lea County, 2016-2020**

Age Groups	Driver First DWI Convictions <sup>1</sup>				
	2016	2017	2018	2019	2020
15-19	12	16	10	7	5
20-24	53	44	28	37	20
25-29	38	38	20	31	16
30-34	32	22	26	16	13
35-39	24	22	15	15	7
40-44	17	12	7	11	11
45-49	10	7	2	12	4
50-54	13	7	5	3	4
55-59	6	3	3	5	5
60-64	2	1	0	3	0
65-69	1	0	1	1	0
70 +	2	1	0	1	0
Missing Data	0	0	0	0	0
<b>Total Drivers</b>	<b>210</b>	<b>173</b>	<b>117</b>	<b>142</b>	<b>85</b>

<sup>1</sup> Values are based upon the year of the conviction.

**Table 31: Driver Repeat DWI Convictions by Age Group in Lea County, 2016-2020**

Age Groups	Driver Repeat DWI Convictions <sup>1</sup>				
	2016	2017	2018	2019	2020
15-19	0	2	0	0	0
20-24	8	4	5	3	4
25-29	12	10	5	3	5
30-34	13	12	9	6	3
35-39	12	10	10	7	3
40-44	7	7	4	5	7
45-49	5	5	1	3	3
50-54	8	5	4	2	0
55-59	8	7	3	11	1
60-64	4	2	0	0	2
65-69	2	1	0	0	0
70 +	0	1	0	0	0
Missing Data	0	0	0	0	0
<b>Total Drivers</b>	<b>79</b>	<b>66</b>	<b>41</b>	<b>40</b>	<b>28</b>

<sup>1</sup> Values are based upon the year of the conviction.



**Table 32: Court Disposition of DWI Arrests for Lea County and the State, 2020**

Court Disposition of DWI Arrest <sup>1</sup>	Lea County	Statewide	Percent of Statewide
Total DWI Arrests	349	8,233	4.2%
DWI Arrests Resulting in Convictions	104	3,975	2.6%
DWI Arrests Resulting in Dismissals <sup>2</sup>	7	587	1.2%
DWI Arrests Awaiting Disposition	238	3,671	6.5%

1 These are the number of DWI arrests in 2020 and whether the case resulted in a conviction or dismissal, or is still awaiting court disposition, as reported in the NM MVD DWI File, as of December 2021.

2 For this table, a very small number of "not guilty" rulings may be included in the category Dismissals.

**Table 33: Average Number of Days from Date of DWI Arrest to Date of Court Disposition in Lea County and the State, 2020**

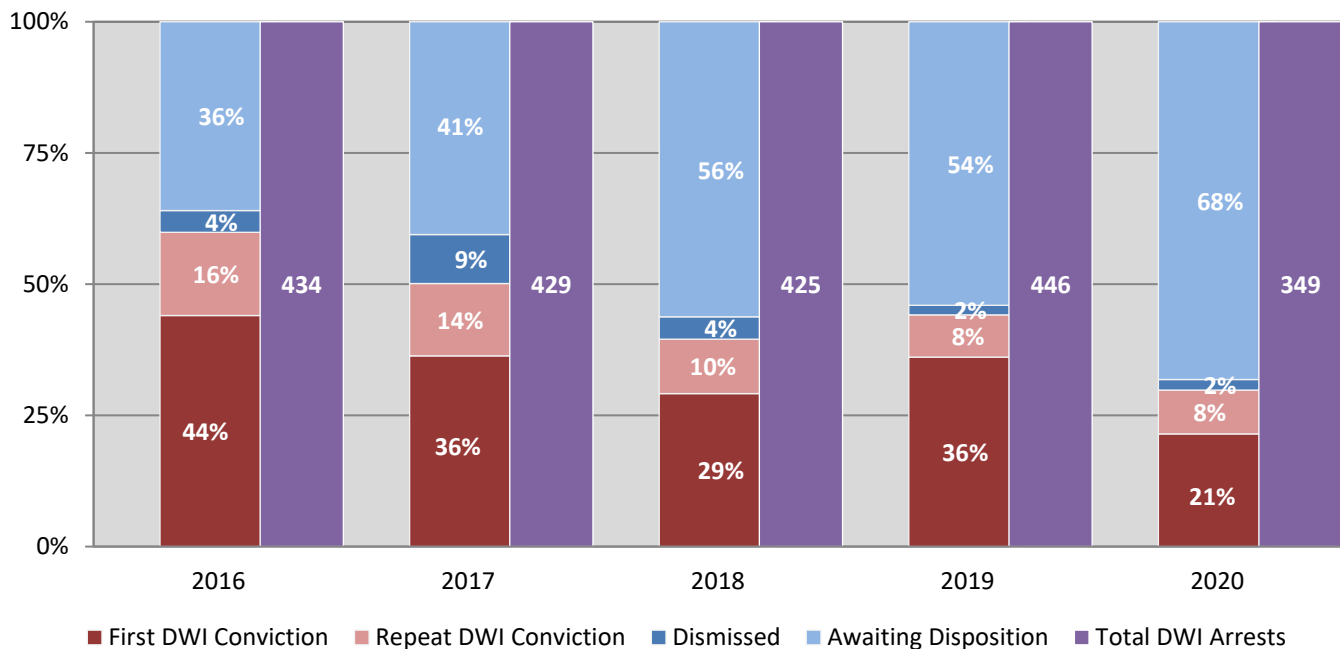
Court Disposition	Average Number of Days		Deviation from Statewide Average
	Lea County	Statewide	
DWI Conviction	233	200	33
DWI Dismissal	213	196	17

**Table 34: Court Disposition of DWI Arrests in Lea County, 2016-2020**

Year of DWI Arrest <sup>1</sup>	Court Disposition				Total DWI Arrests
	First DWI Conviction	Repeat DWI Conviction	Dismissed	Awaiting Disposition	
2016	191	69	18	156	434
2017	156	59	40	174	429
2018	124	44	18	239	425
2019	161	36	8	241	446
2020	75	29	7	238	349

<sup>1</sup> Values are based upon the year of the arrest.

**Figure 14: Court Dispositions by Percentage of DWI Arrests in Lea County, 2016-2020**



\*Table 34 contains the values used to calculate percentages shown in Figure 14.