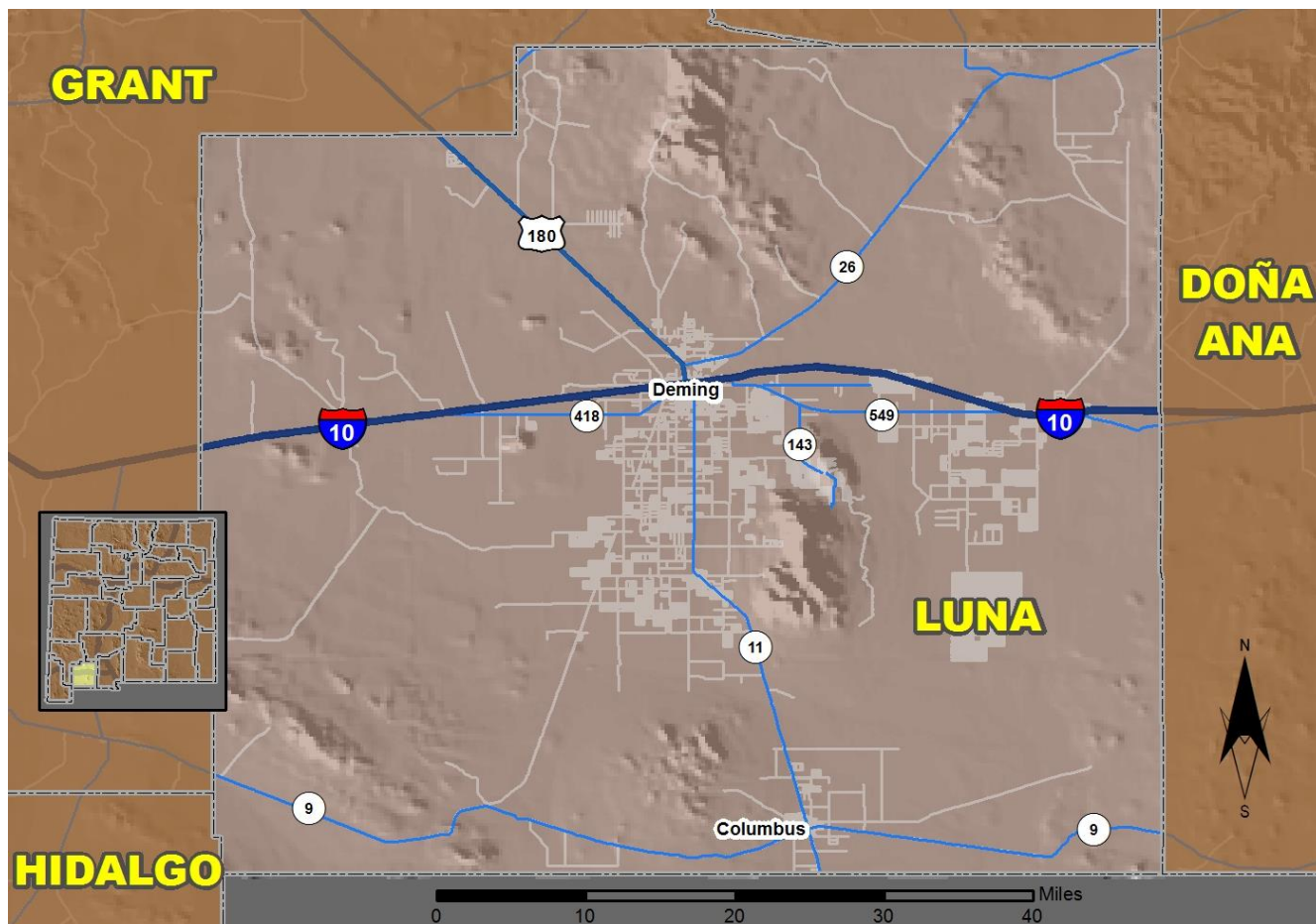


# 2020 Community Report

## Luna County



Produced for the New Mexico Department of Transportation,  
Traffic Safety Division, Traffic Records Bureau,  
Under Contract 6093 by the University of New Mexico,  
Geospatial and Population Studies, Traffic Research Unit

Distributed in compliance with New Mexico Statute 66-7-214  
as a reference source regarding New Mexico traffic crashes

For the purposes of this report, data are compiled by the University of New Mexico, Geospatial and Population Studies, Traffic Research Unit (TRU), on behalf of the New Mexico Department of Transportation (NMDOT). Data in this report may differ from that in other data sources, such as the Federal Fatality Analysis Reporting System (FARS), due to the timing of publications and rules for how data are compiled and maintained in Federal vs. State databases. If you have questions regarding this report, please contact the Traffic Safety Division at 505-827-0427.

<https://gps.unm.edu/tru/crash-reports/community-reports>

## Definitions

---

**Aggravated DWI** – An arrest for 1) driving with a BAC of 0.16 or higher, 2) driving under the influence of alcohol or drugs and causing bodily injury to a human being as a result, or 3) driving under the influence of alcohol or drugs and refusing to submit to a BAC test at the time of arrest for DWI.

**Alcohol-involved Crash** – A crash for which the Uniform Crash Report indicated that 1) a DWI citation was issued, 2) alcohol was a contributing factor, or 3) a person in control of a motor vehicle, a pedalcyclist, or a pedestrian was suspected of being under the influence of alcohol.

**Alcohol-involved Driver** – A person in control of a motor vehicle, a pedalcyclist, or a pedestrian who was cited for DWI or indicated on the Uniform Crash Report as being either suspected or determined by testing to be under the influence of alcohol. There can be multiple alcohol-involved drivers in a single alcohol-involved crash.

**Crash** – A reported incident on a public roadway involving one or more motor vehicles that resulted in death, personal injury, or at least \$500 in property damage. Crashes on private property (such as a parking lot) are not included.

**DWI Arrest (Citation)** – An arrest for either DWI or aggravated DWI. New Mexico's legal limit for presumption of driving while intoxicated (DWI) is 0.08 BAC for non-commercial drivers older than 21 years of age, 0.04 for commercial vehicle drivers, and 0.02 for drivers younger than 21 years of age.

**DWI Conviction** – A conviction for driving under the intoxicating influence of alcohol, narcotics, or pathogenic drugs, including for aggravated DWI.

**Fatal Crash** – A crash in which at least one person was killed. More than one person can be killed in a single fatal crash.

**Fatalities** – The number of people killed in a crash. The terms "killed" and "deaths" are synonymous with "fatalities." A fatality is crash-related if it occurs at the time of the crash or if a person involved in the crash dies within 30 days.

**First Harmful Event** – The event of the crash that produced the first injury or damage. First harmful event (FHE) replaced Crash Classification starting in 2020. FHE and its' subanalysis data are derived from Crash Classification and Analysis for crashes that occurred prior to 2020 and for any agencies not using the E July 2018 Uniform Crash Report, which became available in 2020. Statistics for the categories of "Other Non-Motorist" and "Other" are not available prior to 2020.

**Injury Crash** – A reported crash in which at least one person was injured. Injury crashes each involve at least one suspected serious injury (Class A), suspected minor injury (Class B), or possible injury (Class C). Fatal crashes are not included.

**Missing Data** – An indication that the applicable field on the UCR form was left blank or contained an invalid code. Starting with crashes that occurred in 2012, improvements in the identification of missing data in the NMDOT crash database led to an increase in the reported amount of missing data.

**Pedalcyclists, All** – All people on any pedalcycle or in any pedalcycle trailer, and who are involved in a collision with a motor vehicle. Consists of pedalcycle operators and pedalcycle passengers. Historically, "pedalcyclists" included both pedalcycle operators and passengers. A pedalcycle is a mechanism of transport that is powered solely by pedals.

**Pedestrians, All** – All persons not occupying either a motor vehicle or a pedalcycle, and who are involved in a collision with a motor vehicle. Historically, "pedestrians" have also included people on personal conveyances (e.g., wheelchair or skateboard).

## Sources

---

**Crash Data** – New Mexico Department of Transportation, Traffic Safety Division, Traffic Records Bureau, Traffic Crash Database, as of the report date below. Crash data are compiled using NMDOT Uniform Crash Reports (UCR), submitted by law enforcement agencies in the state, for any incident on a public roadway involving one or more motor vehicles that resulted in death, injury, or at least \$500 in property damage. These reports are processed by the NMDOT Traffic Records Bureau and analyzed by the University of New Mexico, Geospatial and Population Studies, Traffic Research Unit (TRU).

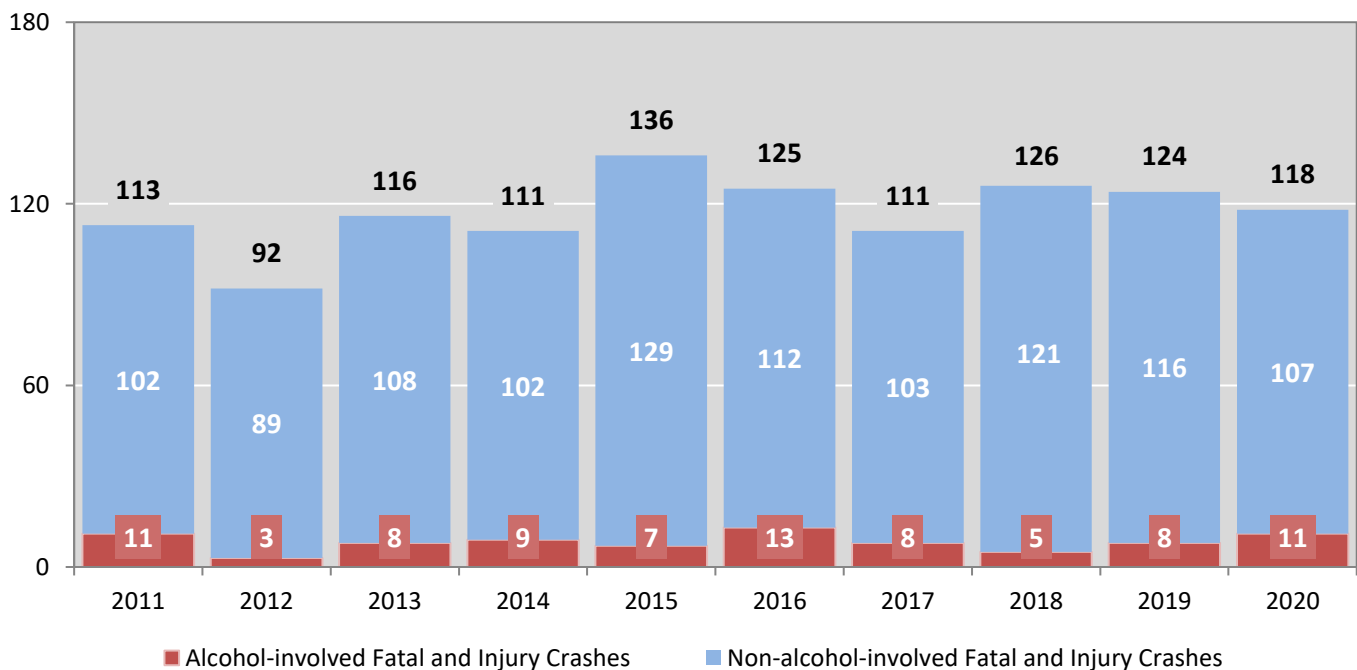
**DWI Arrest Data** – New Mexico Taxation and Revenue Department, Motor Vehicle Division, DWI File, as of the date listed in the footnote of Table 32. Repeat offenders are identified by the combination of account key, arrest date, and citation number. County data are based upon the county where the arrest took place. City data are based upon the city where the offender resides.

**Urban Areas** – Areas defined by the New Mexico Department of Transportation, Asset Management and Planning, 2010 U.S. Census Urbanized Area Boundaries, NMDOT-Adjusted, and U.S. Census Urban Clusters, August 21, 2013. Urban areas for crash years 2013-2017 include a 1/2 mile buffer extending out from those urban boundaries. In crashes before 2013, "urban" was defined as a town or city with a population of at least 2,500 people.

**Table 1: Total Crashes and Alcohol-involved Crashes by  
Crash Severity in Luna County, 2011-2020**

Year	Total Crashes				Alcohol-involved Crashes			
	Fatal	Injury	Property Damage Only	Total	Fatal	Injury	Property Damage Only	Total
2011	3	110	303	416	2	9	7	18
2012	5	87	283	375	0	3	2	5
2013	5	111	338	454	2	6	6	14
2014	1	110	310	421	0	9	7	16
2015	5	131	289	425	1	6	5	12
2016	11	114	298	423	4	9	6	19
2017	2	109	289	400	1	7	8	16
2018	5	121	318	444	0	5	8	13
2019	10	114	274	398	2	6	2	10
2020	6	112	284	402	2	9	9	20

**Figure 1: Alcohol-involved Fatal and Injury Crashes Compared with  
Non-alcohol-involved Fatal and Injury Crashes in Luna County, 2011-2020**



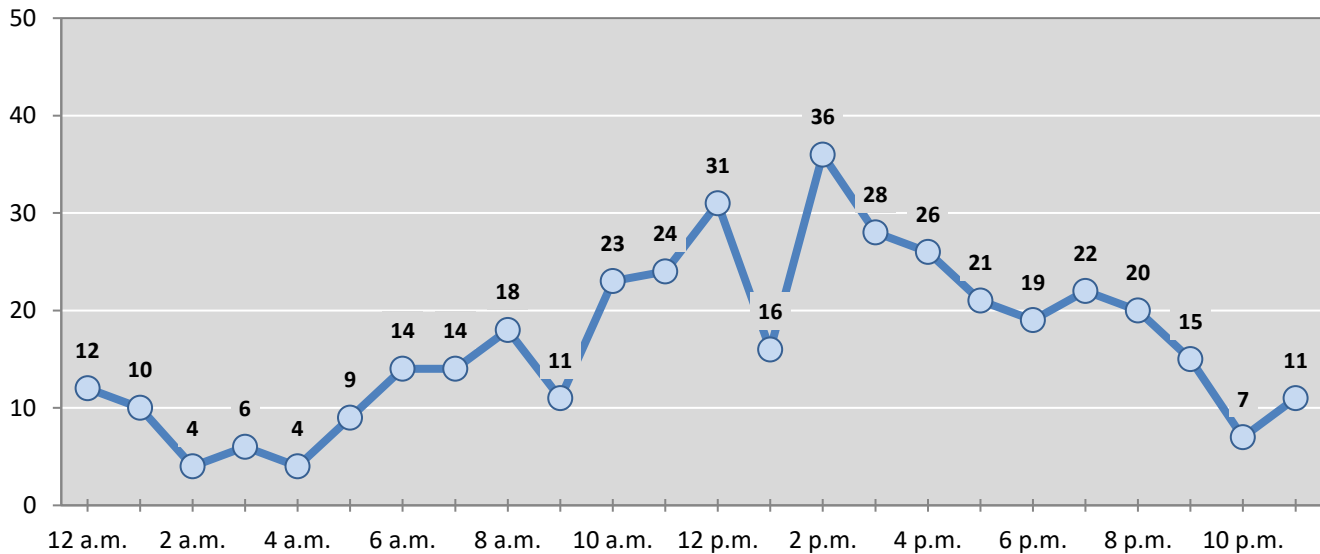
**Table 2: Crashes by Month in Luna County, 2016-2020**

Month	Crashes					5-Year Average
	2016	2017	2018	2019	2020	
January	25	20	42	29	28	<b>29</b>
February	32	30	34	28	38	<b>32</b>
March	45	40	40	49	32	<b>41</b>
April	30	34	33	29	18	<b>29</b>
May	30	32	34	45	30	<b>34</b>
June	27	35	38	30	26	<b>31</b>
July	46	36	45	28	42	<b>39</b>
August	36	41	28	38	45	<b>38</b>
September	43	22	23	35	39	<b>32</b>
October	36	39	43	29	39	<b>37</b>
November	27	44	37	28	39	<b>35</b>
December	46	27	47	30	26	<b>35</b>
<b>Total Crashes</b>	<b>423</b>	<b>400</b>	<b>444</b>	<b>398</b>	<b>402</b>	<b>413</b>

**Table 3: Alcohol-involved Crashes by Month in Luna County, 2016-2020**

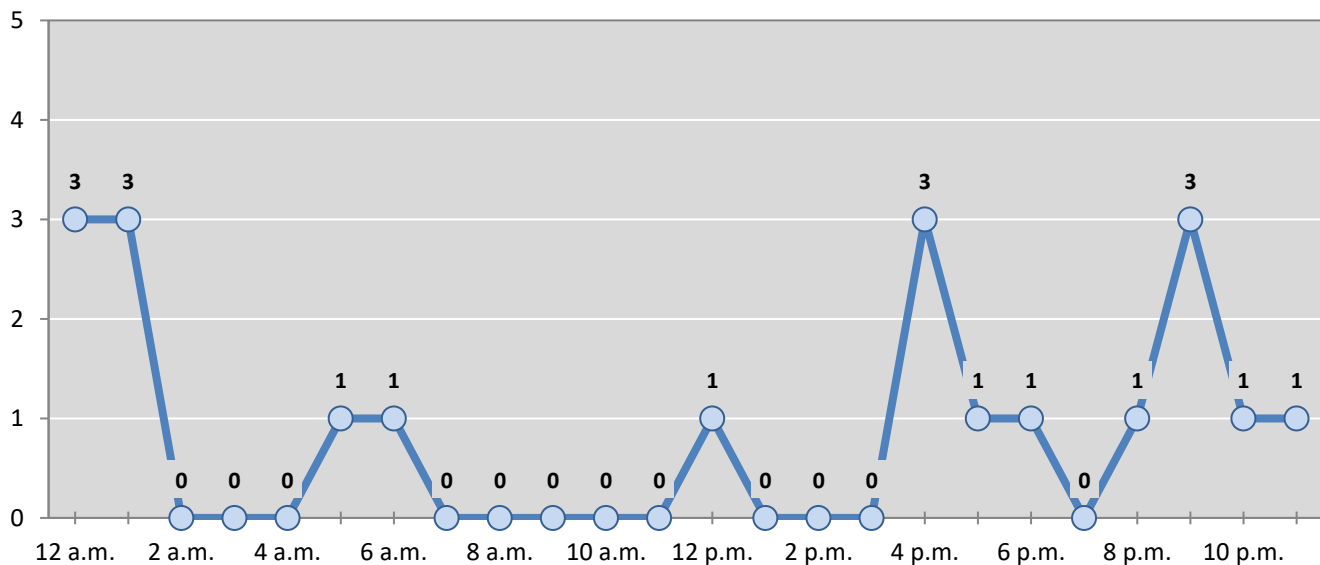
Month	Alcohol-involved Crashes					5-Year Average
	2016	2017	2018	2019	2020	
January	1	2	2	1	1	<b>1</b>
February	1	1	0	3	2	<b>1</b>
March	2	1	2	1	3	<b>2</b>
April	1	3	1	0	2	<b>1</b>
May	3	2	1	1	0	<b>1</b>
June	0	1	5	1	2	<b>2</b>
July	2	3	1	0	1	<b>1</b>
August	0	0	0	1	1	<b>0</b>
September	2	1	0	1	3	<b>1</b>
October	3	0	0	1	0	<b>1</b>
November	3	2	0	0	3	<b>2</b>
December	1	0	1	0	2	<b>1</b>
<b>Total Crashes</b>	<b>19</b>	<b>16</b>	<b>13</b>	<b>10</b>	<b>20</b>	<b>16</b>

**Figure 2: Crashes by Hour in Luna County, 2020**



\* In 2020, Luna County had 1 crashes for which hour data were missing.

**Figure 3: Alcohol-involved Crashes by Hour in Luna County, 2020**



\* In 2020, Luna County had 0 alcohol-involved crashes for which hour data were missing.

**Table 4: Total Crashes by Day of Week in Luna County, 2016-2020**

Day of Week	Total Crashes					5-Year Average
	2016	2017	2018	2019	2020	
Sunday	63	40	57	49	57	53
Monday	51	59	71	62	54	59
Tuesday	40	73	59	64	62	60
Wednesday	57	52	66	48	64	57
Thursday	65	64	52	50	43	55
Friday	80	57	73	63	67	68
Saturday	67	55	66	62	55	61
<b>Total Crashes</b>	<b>423</b>	<b>400</b>	<b>444</b>	<b>398</b>	<b>402</b>	<b>413</b>

**Table 5: Heavy-truck Crashes by Day of Week in Luna County, 2016-2020**

Day of Week	Heavy-truck Crashes					5-Year Average
	2016	2017	2018	2019	2020	
Sunday	5	6	10	10	10	8
Monday	7	5	13	6	7	8
Tuesday	5	13	8	11	28	13
Wednesday	11	10	4	11	9	9
Thursday	9	9	7	5	7	7
Friday	3	5	7	2	9	5
Saturday	10	3	7	9	10	8
<b>Total Crashes</b>	<b>50</b>	<b>51</b>	<b>56</b>	<b>54</b>	<b>80</b>	<b>58</b>

**Table 6: Motorcycle Crashes by Day of Week in Luna County, 2016-2020**

Day of Week	Motorcycle Crashes <sup>1</sup>					5-Year Average
	2016	2017	2018	2019	2020	
Sunday	0	3	3	0	1	1
Monday	0	2	0	0	0	0
Tuesday	0	3	0	1	1	1
Wednesday	1	2	2	1	1	1
Thursday	0	0	1	1	3	1
Friday	4	0	1	2	0	1
Saturday	2	3	1	2	0	2
<b>Total Crashes</b>	<b>7</b>	<b>13</b>	<b>8</b>	<b>7</b>	<b>6</b>	<b>8</b>

<sup>1</sup> "Motorcycles" exclude ATVs.

**Table 7: Alcohol-involved Crashes by Day of Week in Luna County, 2016-2020**

Day of Week	Alcohol-involved Crashes					5-Year Average
	2016	2017	2018	2019	2020	
Sunday	6	3	3	1	4	3
Monday	2	4	1	0	0	1
Tuesday	2	1	0	1	1	1
Wednesday	2	0	1	0	3	1
Thursday	2	4	1	3	3	3
Friday	1	1	4	4	4	3
Saturday	4	3	3	1	5	3
<b>Total Crashes</b>	<b>19</b>	<b>16</b>	<b>13</b>	<b>10</b>	<b>20</b>	<b>16</b>

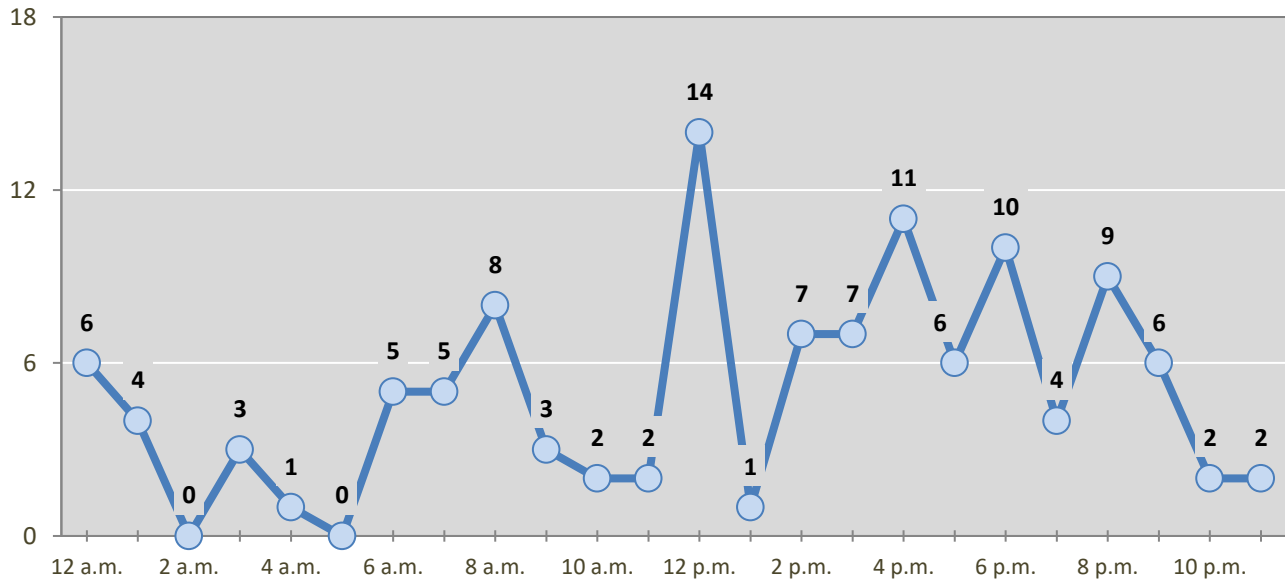
**Table 8: Fatal and Injury Crashes by Day of Week in Luna County, 2016-2020**

Day of Week	Fatal and Injury Crashes					5-Year Average
	2016	2017	2018	2019	2020	
Sunday	20	11	20	18	21	18
Monday	15	15	22	18	16	17
Tuesday	12	20	14	18	13	15
Wednesday	14	17	19	16	12	16
Thursday	21	15	16	14	13	16
Friday	24	13	23	17	21	20
Saturday	19	20	12	23	22	19
<b>Total Crashes</b>	<b>125</b>	<b>111</b>	<b>126</b>	<b>124</b>	<b>118</b>	<b>121</b>

**Table 9: All Pedestrian and Pedalcycle Crashes by Day of Week in Luna County, 2016-2020**

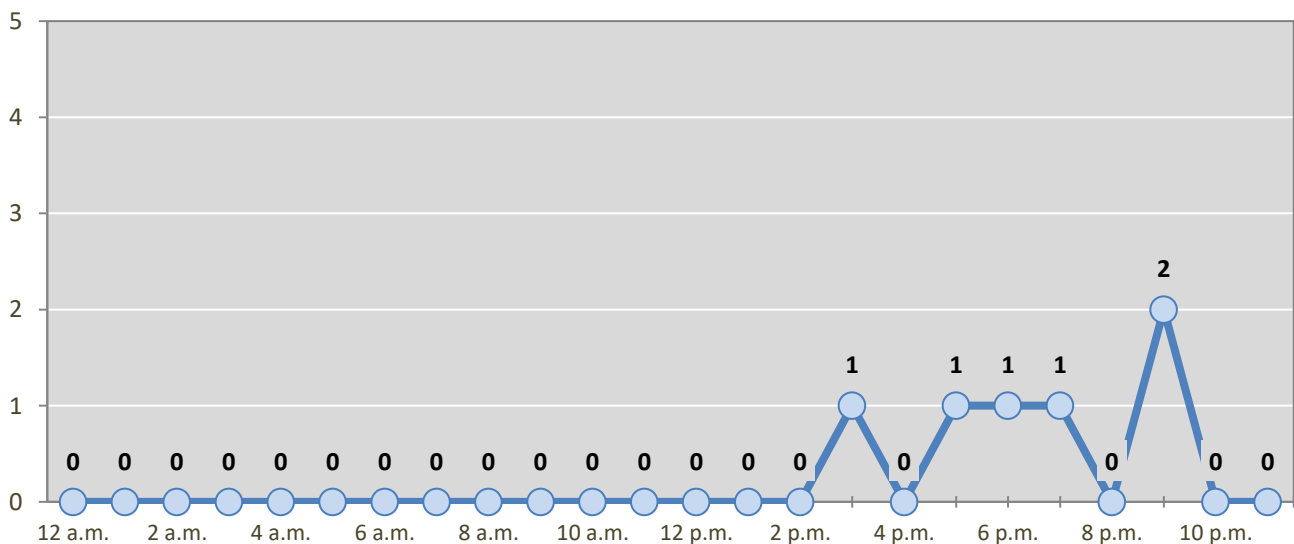
Day of Week	All Pedestrian and Pedalcycle Crashes					5-Year Average
	2016	2017	2018	2019	2020	
Sunday	1	1	0	0	0	0
Monday	1	5	0	2	1	2
Tuesday	2	2	1	2	0	1
Wednesday	0	0	2	1	2	1
Thursday	3	1	2	0	0	1
Friday	3	1	2	1	2	2
Saturday	0	1	1	1	1	1
<b>Total Crashes</b>	<b>10</b>	<b>11</b>	<b>8</b>	<b>7</b>	<b>6</b>	<b>8</b>

**Figure 4: Fatal and Injury Crashes by Hour in Luna County, 2020**



\* In 2020, Luna County had 0 crashes for which hour data were missing.

**Figure 5: All Pedestrian and Pedalcycle Crashes by Hour in Luna County, 2020**



\* In 2020, Luna County had 0 crashes for which hour data were missing.



**Table 10: Severity of Injuries to People in Crashes by Rural and Urban Locations and Alcohol Involvement in Luna County, 2020**

Rural and Urban Locations by Alcohol Involvement	People in Crashes by Severity of Injuries					Total People
	Fatalities (Class K)	Suspected Serious Injuries (Class A)	Suspected Minor Injuries (Class B)	Possible Injuries (Class C)	No Apparent Injuries (Class O)	
<b>People in Alcohol-involved Crashes</b>	<b>2</b>	<b>0</b>	<b>9</b>	<b>4</b>	<b>17</b>	<b>32</b>
Urban	0	0	5	3	9	17
Rural Non-Interstate	2	0	4	1	7	14
Rural Interstate	0	0	0	0	1	1
<b>People in Crashes</b>	<b>8</b>	<b>14</b>	<b>63</b>	<b>91</b>	<b>713</b>	<b>889</b>
Urban	1	3	19	37	355	415
Rural Non-Interstate	5	9	31	38	223	306
Rural Interstate	2	2	13	16	135	168
<b>Percent in Alcohol-involved Crashes</b>	<b>25%</b>	<b>0%</b>	<b>14%</b>	<b>4%</b>	<b>2%</b>	<b>4%</b>

**Table 11: Total Crashes by Rural and Urban Locations and Crash Severity in Luna County, 2016-2020**

Crash Severity by Rural and Urban Locations	Crashes by Year					5-Year Average
	2016	2017	2018	2019	2020	
<b>Total Rural Interstate</b>	<b>90</b>	<b>80</b>	<b>98</b>	<b>95</b>	<b>74</b>	<b>88</b>
Fatal Crash	4	1	3	5	1	3
Injury Crash	32	28	28	27	18	27
Property Damage Only Crash	54	51	67	63	55	58
<b>Total Rural Non-Interstate</b>	<b>103</b>	<b>99</b>	<b>134</b>	<b>109</b>	<b>154</b>	<b>120</b>
Fatal Crash	6	0	2	4	4	3
Injury Crash	32	30	43	37	48	38
Property Damage Only Crash	65	69	89	68	102	79
<b>Total Urban</b>	<b>230</b>	<b>221</b>	<b>212</b>	<b>194</b>	<b>174</b>	<b>206</b>
Fatal Crash	1	1	0	1	1	1
Injury Crash	50	51	50	50	46	49
Property Damage Only Crash	179	169	162	143	127	156

**Table 12: Total Crashes by First Harmful Event in Luna County, 2016-2020**

First Harmful Event <sup>1</sup>	Total Crashes by Year					5-Year Average
	2016	2017	2018	2019	2020	
<b>Collision with Animal</b>	28	20	25	27	25	<b>25</b>
<b>Collision with Fixed Object</b>	59	48	47	55	63	<b>54</b>
<b>Collision with Motor Vehicle</b>	261	236	263	238	205	<b>241</b>
<b>Collision with Other Non-Fixed Object</b>	9	19	27	19	23	<b>19</b>
<b>Collision with Person</b>	10	11	8	7	5	<b>8</b>
Pedalcycle	5	4	1	2	4	<b>3</b>
Pedestrian	5	7	7	5	1	<b>5</b>
Other Non-Motorist	0	0	0	0	0	<b>0</b>
Missing Subanalysis Data	0	0	0	0	0	<b>0</b>
<b>Non-Collision</b>	56	66	73	52	59	<b>61</b>
Overturn/Rollover	42	40	53	33	40	<b>42</b>
All Other Non-Collision	14	26	20	19	19	<b>20</b>
<b>Other</b>	0	0	0	0	18	<b>18</b>
<b>Missing Data</b>	0	0	1	0	4	<b>1</b>
<b>Total Crashes</b>	<b>423</b>	<b>400</b>	<b>444</b>	<b>398</b>	<b>402</b>	<b>413</b>

<sup>1</sup> The options of “Other Non-Motorist” and “Other” were not available before 2020. The addition of options in 2020 decreases the use of previously available options.

**Table 13: Vehicles in Crashes by Vehicle Type in Luna County, 2016-2020**

Vehicle Type <sup>1</sup>	Vehicles in Crashes by Vehicle Type					5-Year Average
	2016	2017	2018	2019	2020	
Buses	2	1	1	4	0	<b>2</b>
Motorcycles/ATVs	8	13	9	9	11	<b>10</b>
Passenger Cars	312	316	383	361	323	<b>339</b>
Pedalcycles	5	4	1	2	5	<b>3</b>
Pedestrians, All	5	7	9	5	1	<b>5</b>
Pickups	160	152	110	116	107	<b>129</b>
Semis/Heavy Trucks	53	59	63	62	90	<b>65</b>
Vans/SUVs/4WDs	90	102	93	85	84	<b>91</b>
Other Vehicles	40	10	29	4	3	<b>17</b>
Missing Data	30	16	28	24	13	<b>22</b>
<b>Total Vehicles</b>	<b>705</b>	<b>680</b>	<b>726</b>	<b>672</b>	<b>637</b>	<b>684</b>

<sup>1</sup> Pedestrians and pedalcycles are counted as non-motorized vehicles, when involved in a crash with a motor vehicle. "All pedestrians" encompasses pedestrians with or without personal conveyance (e.g., wheelchair, skateboard). See Page 18 for more data on non-motorized vehicles in crashes.

**Table 14: Motor Vehicle Drivers in Crashes by Vehicle Type  
and Age Group in Luna County, 2020**

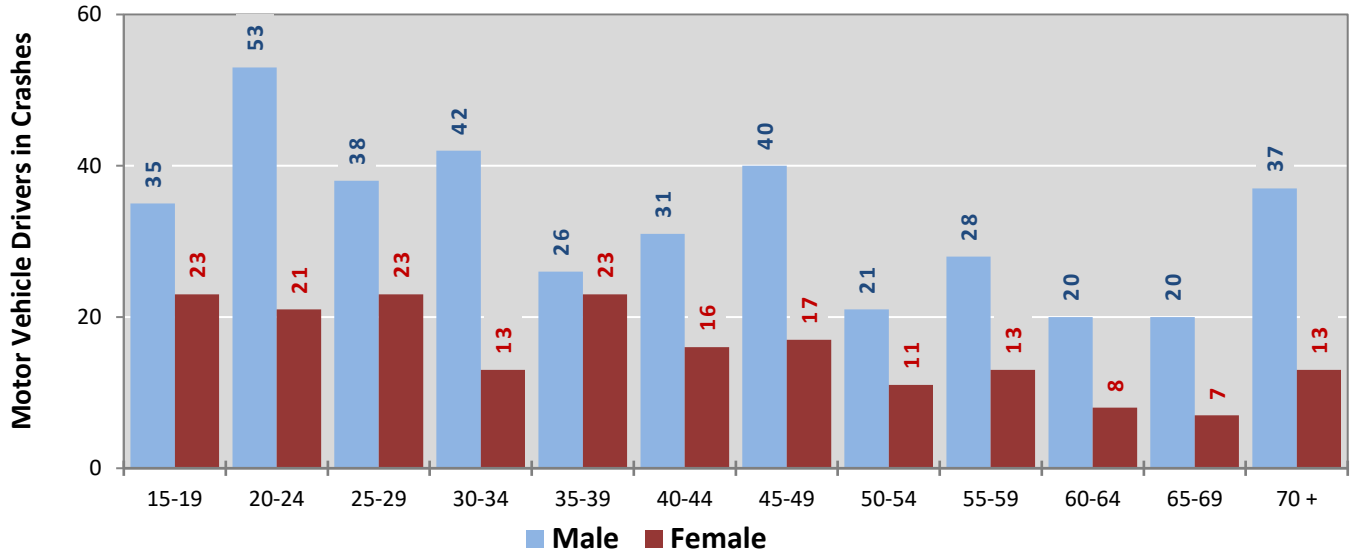
Age Groups	Motor Vehicle <sup>1</sup> Drivers by Vehicle Type and Age Group								Total Drivers
	Bus	Motor-cycle/ATV	Passenger	Pickup	Semi/Heavy Truck	Van 4WD SUV	Other Vehicle	Missing Data	
15-19	0	4	37	8	2	7	0	0	58
20-24	0	0	51	12	5	6	0	0	74
25-29	0	2	37	5	12	5	0	0	61
30-34	0	0	32	8	9	5	1	0	55
35-39	0	0	30	5	4	10	0	0	49
40-44	0	2	27	8	4	6	0	0	47
45-49	0	1	15	8	18	14	0	1	57
50-54	0	0	9	8	10	5	0	0	32
55-59	0	1	15	7	8	9	1	0	41
60-64	0	0	11	7	6	4	0	0	28
65-69	0	0	14	7	3	3	0	0	27
70 +	0	0	20	13	5	9	1	2	50
Missing Data	0	1	25	11	4	1	0	10	52
<b>Total Drivers</b>	<b>0</b>	<b>11</b>	<b>323</b>	<b>107</b>	<b>90</b>	<b>84</b>	<b>3</b>	<b>13</b>	<b>631</b>

**Table 15: Alcohol-involved Motor Vehicle Drivers in Crashes by Vehicle Type  
and Age Group in Luna County, 2020**

Age Groups	Alcohol-involved Motor Vehicle <sup>1</sup> Drivers by Vehicle Type and Age Group								Total Drivers
	Bus	Motor-cycle/ATV	Passenger	Pickup	Semi/Heavy Truck	Van 4WD SUV	Other Vehicle	Missing Data	
15-19	0	0	1	0	0	0	0	0	1
20-24	0	0	6	1	0	1	0	0	8
25-29	0	0	1	0	0	0	0	0	1
30-34	0	0	0	0	0	0	0	0	0
35-39	0	0	3	0	0	0	0	0	3
40-44	0	0	2	0	0	0	0	0	2
45-49	0	0	1	0	0	2	0	0	3
50-54	0	0	0	1	0	0	0	0	1
55-59	0	0	1	0	0	0	0	0	1
60-64	0	0	0	0	0	0	0	0	0
65-69	0	0	0	0	0	0	0	0	0
70 +	0	0	0	0	0	0	0	0	0
Missing Data	0	0	0	0	0	0	0	0	0
<b>Total Drivers</b>	<b>0</b>	<b>0</b>	<b>15</b>	<b>2</b>	<b>0</b>	<b>3</b>	<b>0</b>	<b>0</b>	<b>20</b>

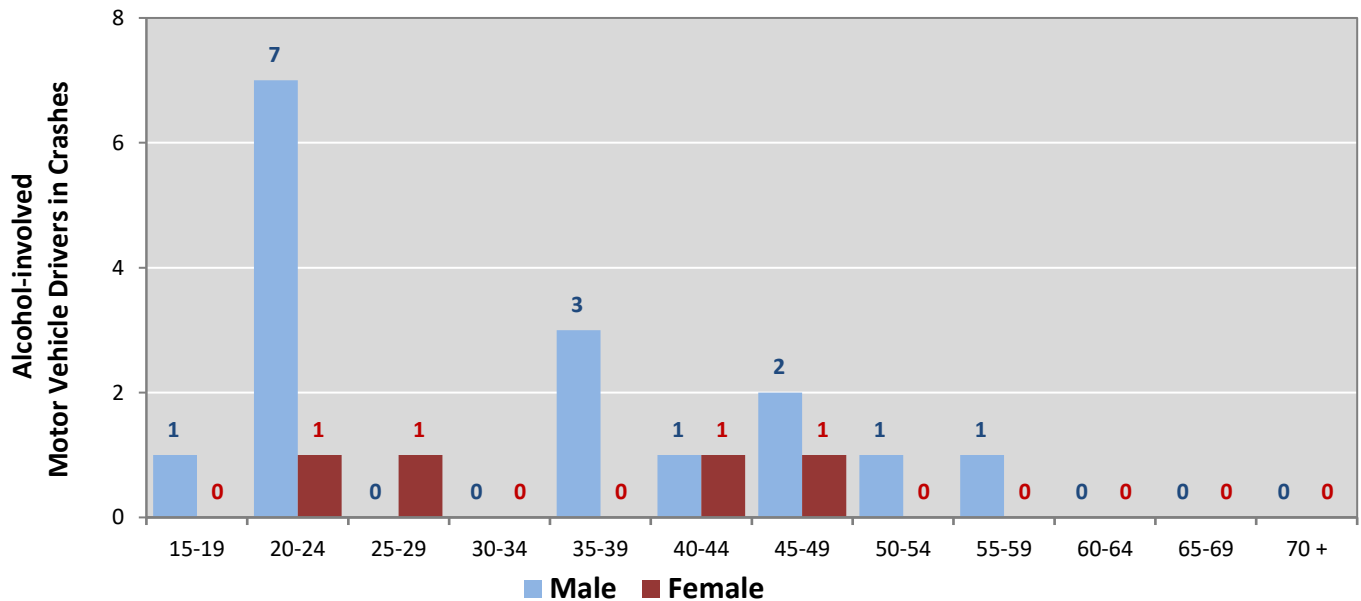
<sup>1</sup> See Page 18 for data on drivers of non-motorized vehicles in crashes (i.e. pedestrians and pedalcyclists).

**Figure 6: Motor Vehicle Drivers in Crashes by Age Group and Sex in Luna County, 2020**



\* In 2020, Luna County had 29 drivers in crashes for which age or sex data were missing.

**Figure 7: Alcohol-involved Motor Vehicle Drivers in Crashes by Age Group and Sex in Luna County, 2020**



\* In 2020, Luna County had 0 drivers in crashes for which age or sex data were missing.

**Table 16: Alcohol-involved Motor Vehicle Drivers Under 21 (Ages 15-20) in Crashes in Luna County, 2016-2020**

Age <sup>1</sup>	Year					5-Year Total
	2016	2017	2018	2019	2020	
15	0	0	0	0	0	0
16	0	0	0	0	0	0
17	1	0	0	0	0	1
18	1	0	0	1	0	2
19	1	1	0	0	1	3
20	0	0	0	2	1	3
<b>Total Drivers</b>	<b>3</b>	<b>1</b>	<b>0</b>	<b>3</b>	<b>2</b>	<b>9</b>

**Table 17: Motor Vehicle Drivers Under 21 (Ages 15-20) in Crashes by Age, Sex and Alcohol Involvement in Luna County, 2020**

Age <sup>1</sup>	Total Drivers				Alcohol-involved Drivers			
	Sex		Total Drivers	Percent of Total	Sex		Total Drivers	Percent of Total
	Male	Female			Male	Female		
15	5	2	7	9%	0	0	0	0%
16	4	2	6	8%	0	0	0	0%
17	3	9	12	16%	0	0	0	0%
18	12	6	18	24%	0	0	0	0%
19	11	4	15	20%	1	0	1	50%
20	11	5	16	22%	1	0	1	50%
<b>Total Drivers</b>	<b>46</b>	<b>28</b>	<b>74</b>	<b>100%</b>	<b>2</b>	<b>0</b>	<b>2</b>	<b>100%</b>

<sup>1</sup> For analysis of drivers under age 21, when the driver age or sex are not identified on the crash report (typically hit-and-run drivers), the driver data are considered unreliable and are excluded from the analysis.

**Table 18: Frequency of Contributing Factors in Crashes  
by Crash Severity in Luna County, 2020**

Contributing Factors	Frequency of Contributing Factor <sup>1</sup> by Crash Severity			
	Frequency in Fatal Crashes	Frequency in Injury Crashes	Frequency in Property Damage Only Crashes	Frequency in All Crashes
<b>Human</b>	<b>12</b>	<b>196</b>	<b>323</b>	<b>531</b>
Driver Inattention	5	55	108	168
Failed to Yield Right of Way	0	24	39	63
Excessive Speed	1	22	25	48
Other Improper Driving	2	17	25	44
Following Too Closely	0	9	18	27
Made Improper Turn	0	5	15	20
Speed Too Fast For Conditions	0	9	11	20
Under the Influence Of Alcohol	2	9	9	20
Improper Lane Change	0	3	14	17
Drove Left of Center	0	7	8	15
Avoid No Contact Vehicle	0	2	10	12
Improper Overtaking	1	4	6	11
Passed Stop Sign	0	8	3	11
Improper Backing	0	0	9	9
Driver Distracted by Other Activity	0	6	3	9
Disregarded Traffic Signal	0	3	4	7
Avoid No Contact Other	0	3	3	6
High-Speed Pursuit	0	1	4	5
Vehicle Skidded Before Braking	0	1	4	5
Failed to Yield For Police Vehicle	0	2	2	4
Failed to Yield For Emer. Vehicle	0	2	1	3
Under the Influence Of Drugs	1	1	0	2
Cell Phone	0	1	0	1
Driverless Moving Vehicle	0	0	1	1
Driver Distracted by Passenger	0	0	1	1
Pedestrian Error	0	1	0	1
Driver Distracted by Talking on Cell Phone	0	1	0	1
Driver Distracted by Talking on Hands-Free Device	0	0	0	0
Driver Distracted By Texting	0	0	0	0
<b>Vehicle</b>	<b>0</b>	<b>2</b>	<b>19</b>	<b>21</b>
Other Mechanical Defect	0	0	6	6
Inadequate Brakes	0	1	4	5
Defective Tires	0	1	3	4
Defective Steering	0	0	2	2
Wheels	0	0	2	2
Lights (Head, Signal, Tail)	0	0	1	1
Windows/Windshield	0	0	1	1
Coupling Device (Hitch, Chains)	0	0	0	0
Exhaust System	0	0	0	0
Mirrors	0	0	0	0
Suspension	0	0	0	0
Wipers	0	0	0	0
<b>Environment</b>	<b>0</b>	<b>9</b>	<b>19</b>	<b>28</b>
Traffic Congestion	0	7	3	10
Animal(s) In Roadway	0	0	6	6
Weather Conditions	0	2	2	4
Debris	0	0	3	3
Other Visual Obstruction(s)	0	0	2	2
Backup - Prior Crash	0	0	1	1
Low Visibility Due to Glare	0	0	1	1
Road Surface Conditions	0	0	1	1
Backup - Prior Incident	0	0	0	0
Low Visibility Due to Smoke	0	0	0	0
Road Defect	0	0	0	0
Obstruction in Road	0	0	0	0
Traffic Control Missing	0	0	0	0
<b>Other</b>	<b>4</b>	<b>75</b>	<b>199</b>	<b>278</b>
Other - No Driver Error	3	48	123	174
None	1	25	51	77
Missing Data	0	2	25	27
<b>Total</b>	<b>16</b>	<b>282</b>	<b>560</b>	<b>858</b>

<sup>1</sup> Multiple contributing factors may be reported for any vehicle in a crash.

**Table 19: People in Crashes by First Harmful Event and Severity of Injuries in Luna County, 2020**

First Harmful Event (FHE) and Subanalysis	People in Crashes by Severity of Injuries					Total People
	Fatalities (Class K)	Suspected Serious Injuries (Class A)	Suspected Minor Injuries (Class B)	Possible Injuries (Class C)	No Apparent Injuries (Class O)	
<b>Collision with Animal</b>	<b>0</b>	<b>0</b>	<b>2</b>	<b>3</b>	<b>36</b>	<b>41</b>
Cattle/Cow	0	0	1	3	22	26
Deer	0	0	0	0	6	6
Small Game Animal	0	0	0	0	5	5
Horse	0	0	0	0	2	2
Small Domestic Animal	0	0	1	0	0	1
Antelope	0	0	0	0	0	0
Bear	0	0	0	0	0	0
Elk	0	0	0	0	0	0
Other (Bird, Cougar, Sheep, Goat)	0	0	0	0	0	0
Other Large Domestic Animal	0	0	0	0	0	0
Other Large Game Animal	0	0	0	0	0	0
Missing Subanalysis Data	0	0	0	0	1	1
<b>Collision with Fixed Object</b>	<b>0</b>	<b>1</b>	<b>6</b>	<b>6</b>	<b>69</b>	<b>82</b>
Guardrail, End or Face	0	0	0	0	14	14
Fence	0	0	0	0	12	12
Utility Pole/Light Support	0	1	1	1	8	11
Other Fixed Object	0	0	1	0	8	9
Other Post, Pole or Support	0	0	1	2	4	7
Traffic Sign Support	0	0	0	1	3	4
Bridge Pier, Support, Rail, or Overhead	0	0	0	0	2	2
Curb	0	0	1	0	1	2
Median	0	0	0	0	2	2
Tree (standing)	0	0	0	0	2	2
Traffic Barrier, Concrete	0	0	0	0	1	1
Culvert	0	0	0	0	0	0
Ditch	0	0	0	0	0	0
Embankment	0	0	0	0	0	0
Traffic Barrier, Cable	0	0	0	0	0	0
Wall or Building	0	0	0	0	0	0
Other (incl. hydrant, box, cattle guard, plant)	0	0	2	2	12	16
Missing Subanalysis Data	0	0	0	0	0	0
<b>Collision with Motor Vehicle</b>	<b>4</b>	<b>8</b>	<b>21</b>	<b>68</b>	<b>477</b>	<b>578</b>
MV in Transport	4	8	20	63	426	521
Parked MV	0	0	0	0	9	9
Missing Subanalysis Data	0	0	1	5	42	48
<b>Collision with Other Non-Fixed Object</b>	<b>0</b>	<b>0</b>	<b>1</b>	<b>2</b>	<b>34</b>	<b>37</b>
Struck by falling, shifting cargo	0	0	0	1	11	12
Railway Vehicle	0	0	0	0	3	3
Work Zone / Maintenance Equipment	0	0	0	0	0	0
Other Non-fixed Object	0	0	1	1	20	22
Missing Subanalysis Data	0	0	0	0	0	0
<b>Collision with Person</b>	<b>0</b>	<b>0</b>	<b>5</b>	<b>0</b>	<b>7</b>	<b>12</b>
Pedalcycle	0	0	4	0	6	10
Pedestrian	0	0	1	0	1	2
Other Non-Motorist	0	0	0	0	0	0
Missing Subanalysis Data	0	0	0	0	0	0
<b>Non-Collision</b>	<b>4</b>	<b>5</b>	<b>25</b>	<b>9</b>	<b>53</b>	<b>96</b>
Overturn/Rollover	4	4	21	9	27	65
Cargo/Equipment Loss or Shift	0	0	2	0	4	6
Fire/Explosion	0	0	0	0	5	5
Jackknife	0	0	0	0	2	2
Fell/Jumped from MV	0	0	0	0	0	0
Immersion, Full or Partial	0	0	0	0	0	0
Thrown or Falling Object	0	0	0	0	0	0
Other Non-Collision	0	1	2	0	15	18
Missing Subanalysis Data	0	0	0	0	0	0
<b>Other</b>	<b>0</b>	<b>0</b>	<b>3</b>	<b>2</b>	<b>34</b>	<b>39</b>
<b>Missing FHE and Subanalysis Data</b>	<b>0</b>	<b>0</b>	<b>0</b>	<b>1</b>	<b>3</b>	<b>4</b>
<b>Total People</b>	<b>8</b>	<b>14</b>	<b>63</b>	<b>91</b>	<b>713</b>	<b>889</b>

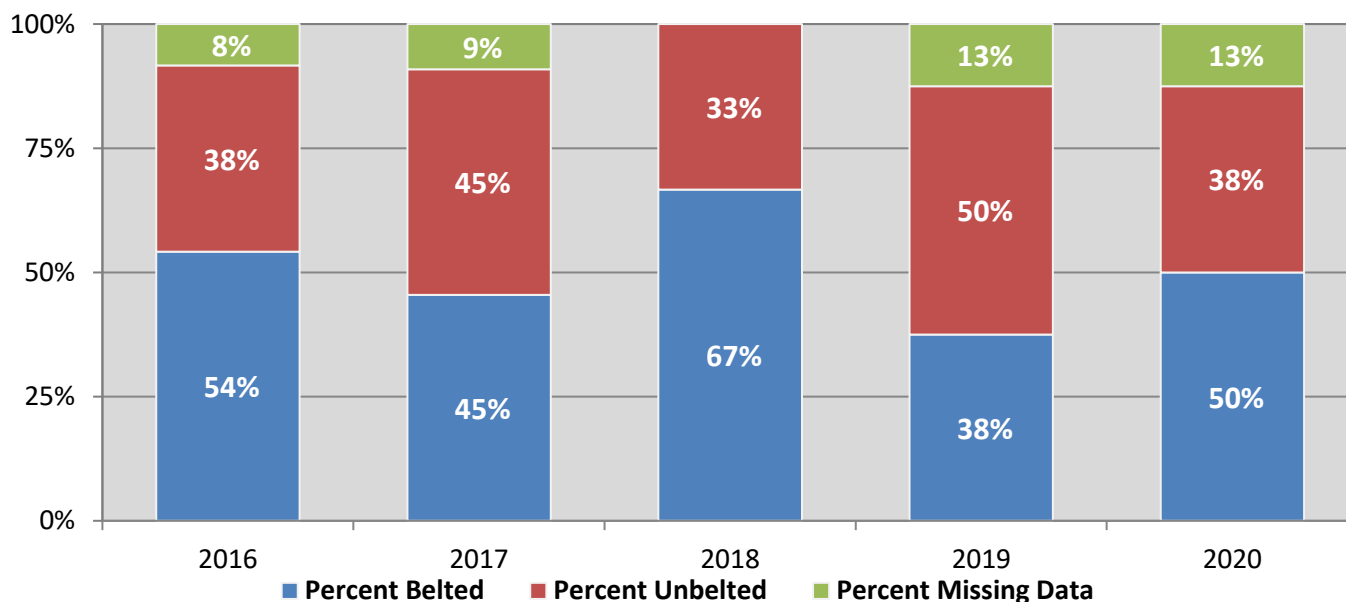
**Table 20: Killed or Injured Unbelted People in Crashes  
by Sex and Age Group in Luna County, 2020**

Age Groups	Unbelted People Killed or Injured <sup>1,2</sup>				Total People
	Male	Percent of Male	Female	Percent of Female	
0-4	0	0%	0	0%	0
5-9	0	0%	1	33%	1
10-14	1	8%	0	0%	1
15-19	2	15%	0	0%	2
20-24	2	15%	0	0%	2
25-29	2	15%	0	0%	2
30-34	1	8%	0	0%	1
35-39	1	8%	0	0%	1
40-44	0	0%	0	0%	0
45-49	0	0%	1	33%	1
50-54	1	8%	0	0%	1
55-59	1	8%	0	0%	1
60-64	0	0%	0	0%	0
65-69	0	0%	0	0%	0
70 +	2	15%	1	33%	3
Missing Data	0	0%	0	0%	0
<b>Total People</b>	<b>13</b>	<b>100%</b>	<b>3</b>	<b>100%</b>	<b>16</b>

<sup>1</sup> People injured are in one of three categories: suspected serious injury, suspected minor injury, or possible injury.

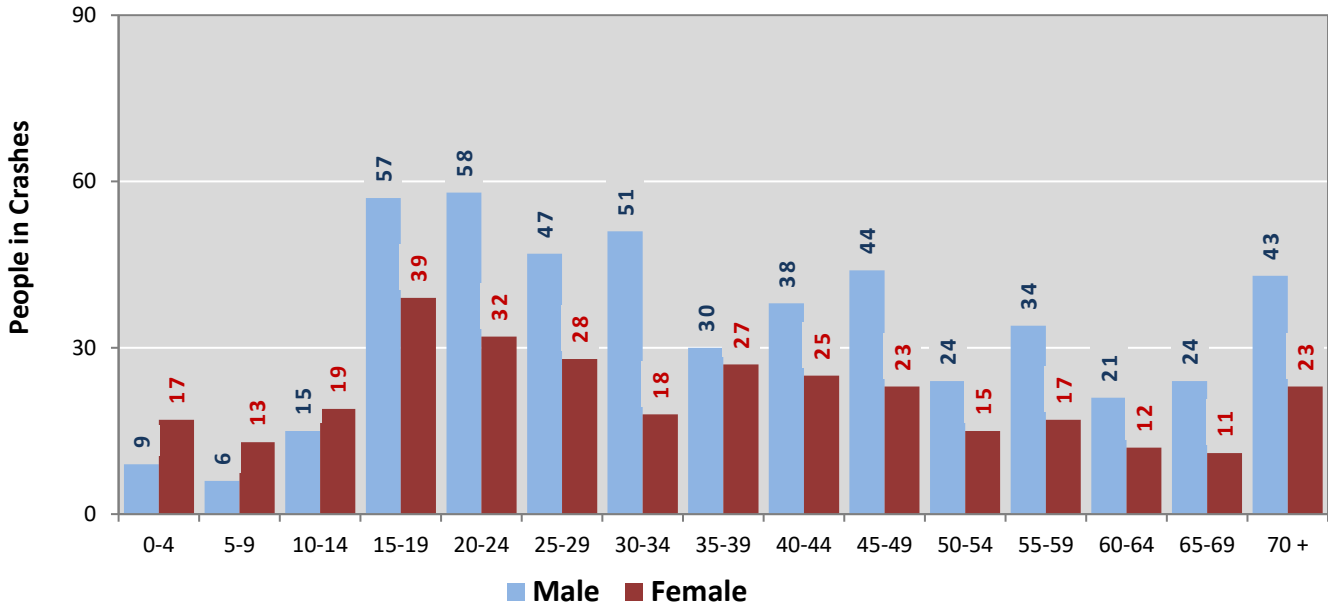
<sup>2</sup> Excludes people in or on buses, heavy trucks, motorcycles, or ATVs.

**Figure 8: Seatbelt Use by People in Crashes with Fatal or Suspected Serious Injuries in Luna County, 2016-2020**



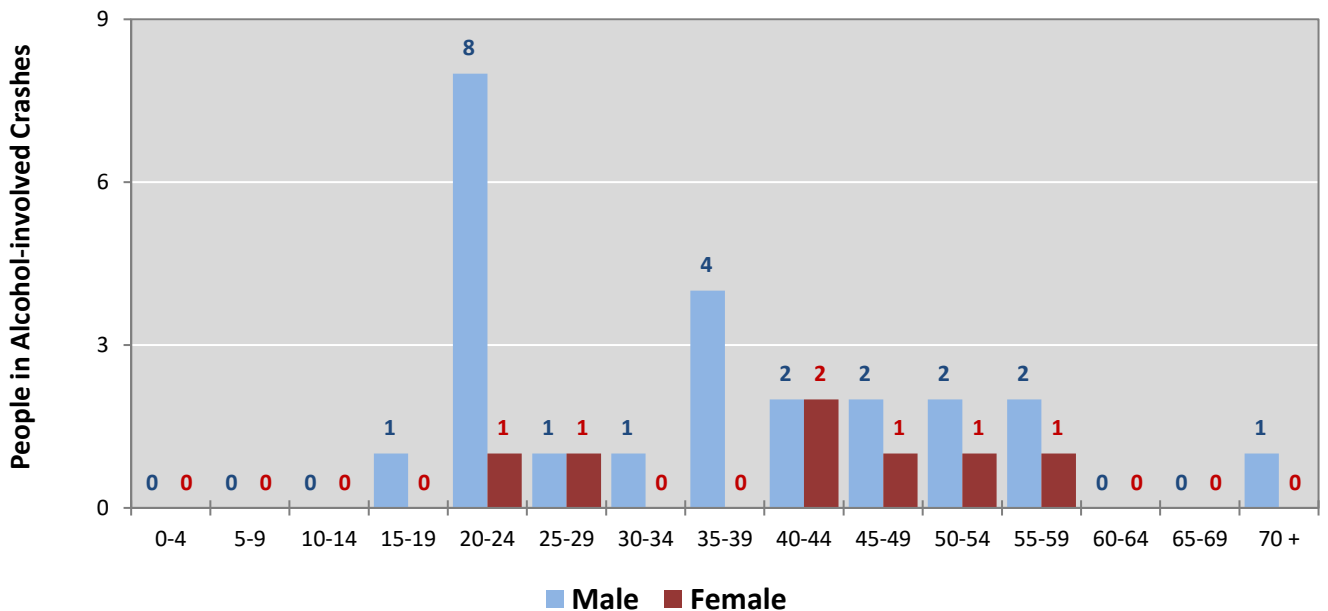


**Figure 9: People in Crashes by Age Group and Sex in Luna County, 2020**



\* In 2020, Luna County had 69 people in crashes for which age or sex data were missing.

**Figure 10: People in Alcohol-involved Crashes by Age Group and Sex in Luna County, 2020**



\* In 2020, Luna County had 1 person in alcohol-involved crashes for which age or sex data were missing.

**Table 21: All Pedestrians and All Pedalcyclists in Crashes by Age Group in Luna County, 2016-2020**

Age Groups	All Pedestrians and All Pedalcyclists <sup>1</sup> in Crashes					5-Year Total People
	2016	2017	2018	2019	2020	
0-4	0	0	0	0	0	0
5-9	0	1	0	0	0	1
10-14	0	0	1	0	1	2
15-19	0	2	0	1	1	4
20-24	1	0	0	0	1	2
25-29	2	0	1	0	0	3
30-34	1	1	1	0	0	3
35-39	1	0	1	2	0	4
40-44	1	0	0	0	1	2
45-49	0	0	2	0	0	2
50-54	0	2	0	1	0	3
55-59	3	0	1	0	0	4
60-64	0	2	0	0	1	3
65-69	1	1	1	0	1	4
70 +	0	2	1	1	0	4
Missing Data	0	0	1	2	0	3
<b>Total People</b>	<b>10</b>	<b>11</b>	<b>10</b>	<b>7</b>	<b>6</b>	<b>44</b>

**Table 22: All Pedestrians and Pedalcycle Operators in Crashes by Alcohol Involvement and Severity of Injuries in Luna County, 2020**

Alcohol Involvement	All Pedestrians and Pedalcycle Operators <sup>1</sup> in Crashes					Total People
	Fatalities (Class K)	Suspected Serious Injuries (Class A)	Suspected Minor Injuries (Class B)	Possible Injuries (Class C)	No Apparent Injury (Class O)	
<b>Pedalcycle Operators</b>	<b>0</b>	<b>0</b>	<b>5</b>	<b>0</b>	<b>0</b>	<b>5</b>
Involved	0	0	0	0	0	0
Not Involved	0	0	5	0	0	5
<b>All Pedestrians</b>	<b>0</b>	<b>0</b>	<b>1</b>	<b>0</b>	<b>0</b>	<b>1</b>
Involved	0	0	0	0	0	0
Not Involved	0	0	1	0	0	1
<b>Total People</b>	<b>0</b>	<b>0</b>	<b>6</b>	<b>0</b>	<b>0</b>	<b>6</b>

<sup>1</sup> "All pedestrians" encompasses pedestrians with and without personal conveyance (e.g., wheelchair, skateboard). "All pedalcyclists" encompasses both pedalcycle operators and pedalcycle passengers. All pedestrians and pedalcycle operators are counted as non-motorized vehicles when involved in a crash with a motor vehicle.

**Table 23: Occupants of Passenger Vehicles in Crashes  
by Severity of Injuries and Belt Usage in Luna County, 2020**

Severity of Injuries	Injury Class	Occupants of Passenger Vehicles <sup>1</sup>			
		Belted	Unbelted	Missing Data	Total
Fatalities	K	3	4	0	7
Suspected Serious Injuries	A	5	2	2	9
Suspected Minor Injuries	B	34	6	4	44
Possible Injuries	C	74	3	7	84
No Apparent Injuries	O	446	7	140	593
<b>Total Occupants of Passenger Vehicles</b>		<b>562</b>	<b>22</b>	<b>153</b>	<b>737</b>

<sup>1</sup> Occupants of passenger cars, SUVs, 4WDs, vans, and pickup trucks only.

**Table 24: Motorcyclists in Crashes  
by Severity of Injuries and Helmet Usage in Luna County, 2020**

Severity of Injuries	Injury Class	Motorcyclists in Crashes <sup>1</sup>			
		Helmeted	Unhelmeted	Missing Data	Total
Fatalities	K	0	0	0	0
Suspected Serious Injuries	A	1	1	0	2
Suspected Minor Injuries	B	0	2	0	2
Possible Injuries	C	0	0	0	0
No Apparent Injuries	O	3	0	0	3
<b>Total Motorcyclists</b>		<b>4</b>	<b>3</b>	<b>0</b>	<b>7</b>

<sup>1</sup> Excludes people on ATVs.

**Table 25: Occupants of Passenger Vehicles in Crashes  
by Year, Belt Usage, and Percent Killed in Luna County, 2016-2020**

Year	Occupant Fatalities of Passenger Vehicles <sup>1</sup>				Total Occupants of Passenger Vehicles <sup>1</sup>				Percent Killed	
	Belted	Unbelted	Missing Data	Total Fatalities	Belted	Unbelted	Missing Data	Total Occupants	Belted	Unbelted
2016	5	3	0	8	699	26	158	883	0.72%	11.5%
2017	0	1	0	1	681	44	141	866	0.00%	2.3%
2018	3	2	0	5	748	22	108	878	0.40%	9.1%
2019	3	6	0	9	704	20	146	870	0.43%	30.0%
2020	3	4	0	7	562	22	153	737	0.53%	18.2%
<b>Average</b>	<b>2.8</b>	<b>3.2</b>	<b>0.0</b>	<b>6.0</b>	<b>678.8</b>	<b>26.8</b>	<b>141.2</b>	<b>846.8</b>	<b>0.41%</b>	<b>11.9%</b>

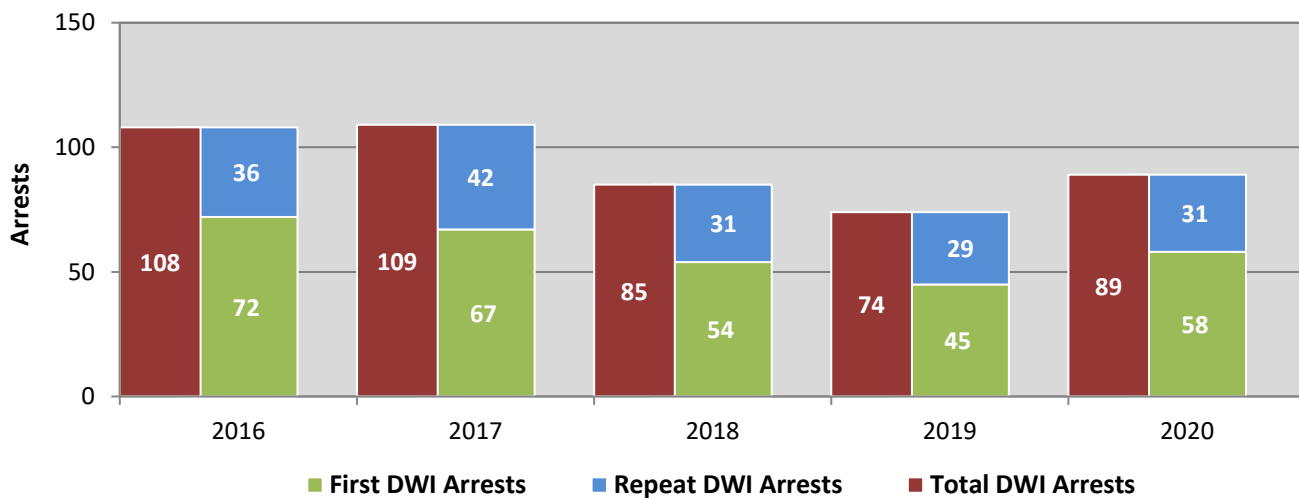
<sup>1</sup> Occupants of passenger cars, SUVs, 4WDs, vans, and pickup trucks only.

**Table 26: Motorcyclists in Crashes  
by Year, Helmet Usage, and Percent Killed in Luna County, 2016-2020**

Year	Motorcyclist Fatalities <sup>1</sup>				Total Motorcyclists <sup>1</sup>				Percent Killed	
	Helmeted	Unhelmeted	Missing Data	Total Fatalities	Helmeted	Unhelmeted	Missing Data	Total Occupants	Helmeted	Unhelmeted
2016	1	1	0	2	2	2	3	7	50.0%	50.0%
2017	0	0	0	0	6	2	6	14	0.0%	0.0%
2018	0	0	0	0	3	4	1	8	0.0%	0.0%
2019	0	1	0	1	4	2	2	8	0.0%	50.0%
2020	0	0	0	0	4	3	0	7	0.0%	0.0%
<b>Average</b>	<b>0.2</b>	<b>0.4</b>	<b>0.0</b>	<b>0.6</b>	<b>3.8</b>	<b>2.6</b>	<b>2.4</b>	<b>8.8</b>	<b>5.3%</b>	<b>15.4%</b>

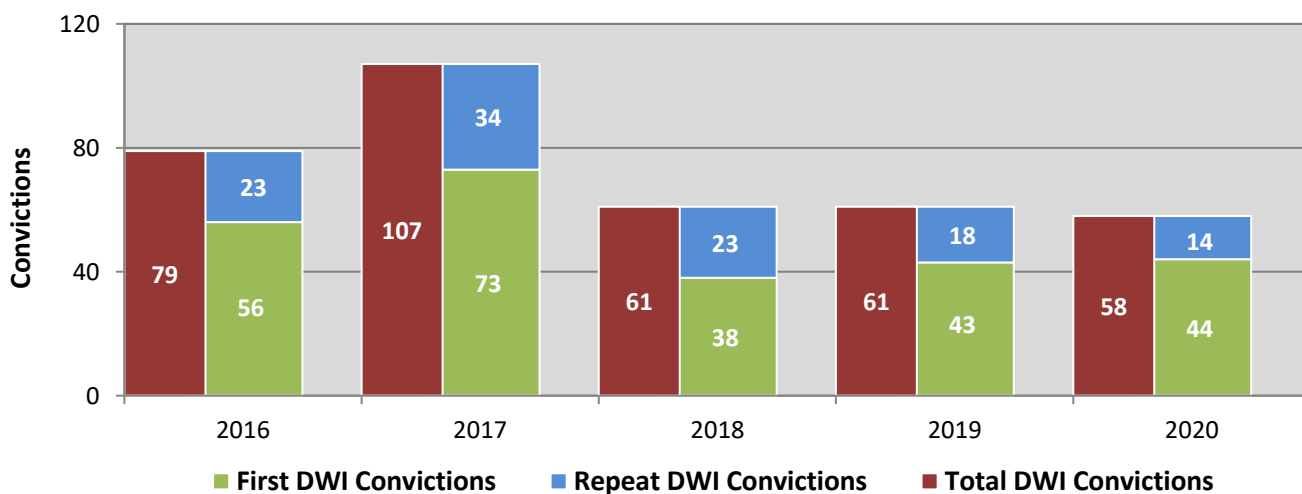
<sup>1</sup> Excludes people on ATVs.

**Figure 11: DWI Arrests in Luna County,  
Showing First and Repeat DWI Arrests, 2016-2020**



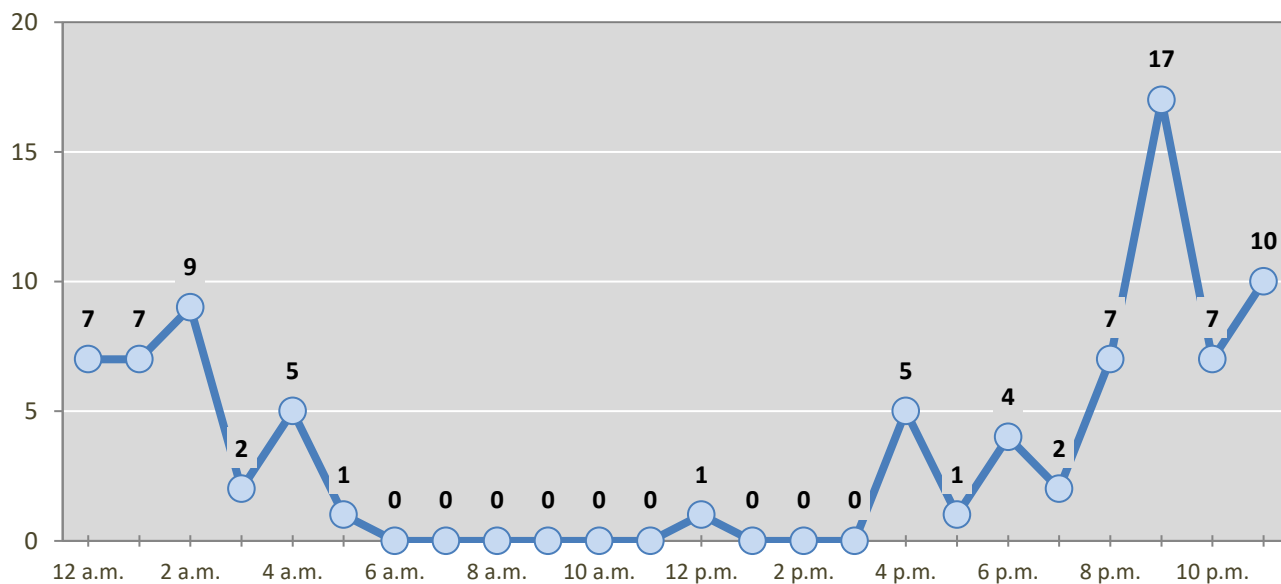
\*Values are based upon the year of the arrest.

**Figure 12: DWI Convictions in Luna County,  
Showing First and Repeat DWI Convictions, 2016-2020**



\*Values are based upon the year of the conviction.

**Figure 13: DWI Arrests by Hour in Luna County, 2020**



\* In 2020, Luna County had 4 arrests for which hour data were missing.

**Table 27: DWI Arrests by Day of Week in Luna County, 2016-2020**

Day of Week	Year					5-Year Average
	2016	2017	2018	2019	2020	
Sunday	25	23	16	14	18	19
Monday	10	17	7	7	6	9
Tuesday	9	15	9	6	8	9
Wednesday	7	9	12	6	6	8
Thursday	19	11	5	13	13	12
Friday	20	15	13	14	12	15
Saturday	18	19	23	14	26	20
<b>Total Arrests</b>	<b>108</b>	<b>109</b>	<b>85</b>	<b>74</b>	<b>89</b>	<b>93</b>

**Table 28: Driver First DWI Arrests by Age Group in Luna County, 2016-2020**

Age Groups	Driver First DWI Arrests <sup>1</sup>				
	2016	2017	2018	2019	2020
15-19	9	7	4	2	8
20-24	17	16	11	16	15
25-29	11	11	11	9	9
30-34	11	7	9	6	6
35-39	6	7	3	5	8
40-44	4	1	3	1	1
45-49	5	6	2	1	6
50-54	3	2	4	2	3
55-59	2	5	3	0	1
60-64	1	3	2	0	1
65-69	0	1	2	1	0
70 +	3	1	0	2	0
Missing Data	0	0	0	0	0
<b>Total Drivers</b>	<b>72</b>	<b>67</b>	<b>54</b>	<b>45</b>	<b>58</b>

<sup>1</sup> Values are based upon the year of the arrest.

**Table 29: Driver Repeat DWI Arrests by Age Group in Luna County, 2016-2020**

Age Groups	Driver Repeat DWI Arrests <sup>1</sup>				
	2016	2017	2018	2019	2020
15-19	2	1	0	0	1
20-24	1	2	2	3	7
25-29	4	8	5	0	5
30-34	9	6	3	8	3
35-39	1	6	5	3	5
40-44	4	5	3	6	3
45-49	0	2	3	2	2
50-54	3	3	4	1	4
55-59	5	4	3	4	0
60-64	4	1	2	0	0
65-69	3	2	1	1	0
70 +	0	2	0	1	1
Missing Data	0	0	0	0	0
<b>Total Drivers</b>	<b>36</b>	<b>42</b>	<b>31</b>	<b>29</b>	<b>31</b>

<sup>1</sup> Values are based upon the year of the arrest.

**Table 30: Driver First DWI Convictions by Age Group in Luna County, 2016-2020**

Age Groups	Driver First DWI Convictions <sup>1</sup>				
	2016	2017	2018	2019	2020
15-19	5	7	3	2	5
20-24	13	18	6	10	11
25-29	12	14	11	7	7
30-34	5	10	3	8	5
35-39	5	6	4	6	5
40-44	5	2	3	1	1
45-49	3	6	2	2	4
50-54	3	3	3	1	3
55-59	5	3	1	2	1
60-64	0	2	1	1	0
65-69	0	1	1	1	1
70 +	0	1	0	2	1
Missing Data	0	0	0	0	0
<b>Total Drivers</b>	<b>56</b>	<b>73</b>	<b>38</b>	<b>43</b>	<b>44</b>

<sup>1</sup> Values are based upon the year of the conviction.

**Table 31: Driver Repeat DWI Convictions by Age Group in Luna County, 2016-2020**

Age Groups	Driver Repeat DWI Convictions <sup>1</sup>				
	2016	2017	2018	2019	2020
15-19	1	0	0	0	0
20-24	1	1	1	0	1
25-29	2	4	3	2	3
30-34	3	7	2	5	4
35-39	0	5	3	3	1
40-44	2	4	3	3	0
45-49	2	2	0	4	0
50-54	5	2	5	1	2
55-59	3	5	3	0	2
60-64	3	0	2	0	0
65-69	1	3	1	0	1
70 +	0	1	0	0	0
Missing Data	0	0	0	0	0
<b>Total Drivers</b>	<b>23</b>	<b>34</b>	<b>23</b>	<b>18</b>	<b>14</b>

<sup>1</sup> Values are based upon the year of the conviction.



**Table 32: Court Disposition of DWI Arrests for Luna County and the State, 2020**

Court Disposition of DWI Arrest <sup>1</sup>	Luna County	Statewide	Percent of Statewide
Total DWI Arrests	89	8,233	<b>1.1%</b>
DWI Arrests Resulting in Convictions	64	3,975	<b>1.6%</b>
DWI Arrests Resulting in Dismissals <sup>2</sup>	6	587	<b>1.0%</b>
DWI Arrests Awaiting Disposition	19	3,671	<b>0.5%</b>

<sup>1</sup> These are the number of DWI arrests in 2020 and whether the case resulted in a conviction or dismissal, or is still awaiting court disposition, as reported in the NM MVD DWI File, as of December 2021.

<sup>2</sup> For this table, a very small number of "not guilty" rulings may be included in the category Dismissals.

**Table 33: Average Number of Days from Date of DWI Arrest to Date of Court Disposition in Luna County and the State, 2020**

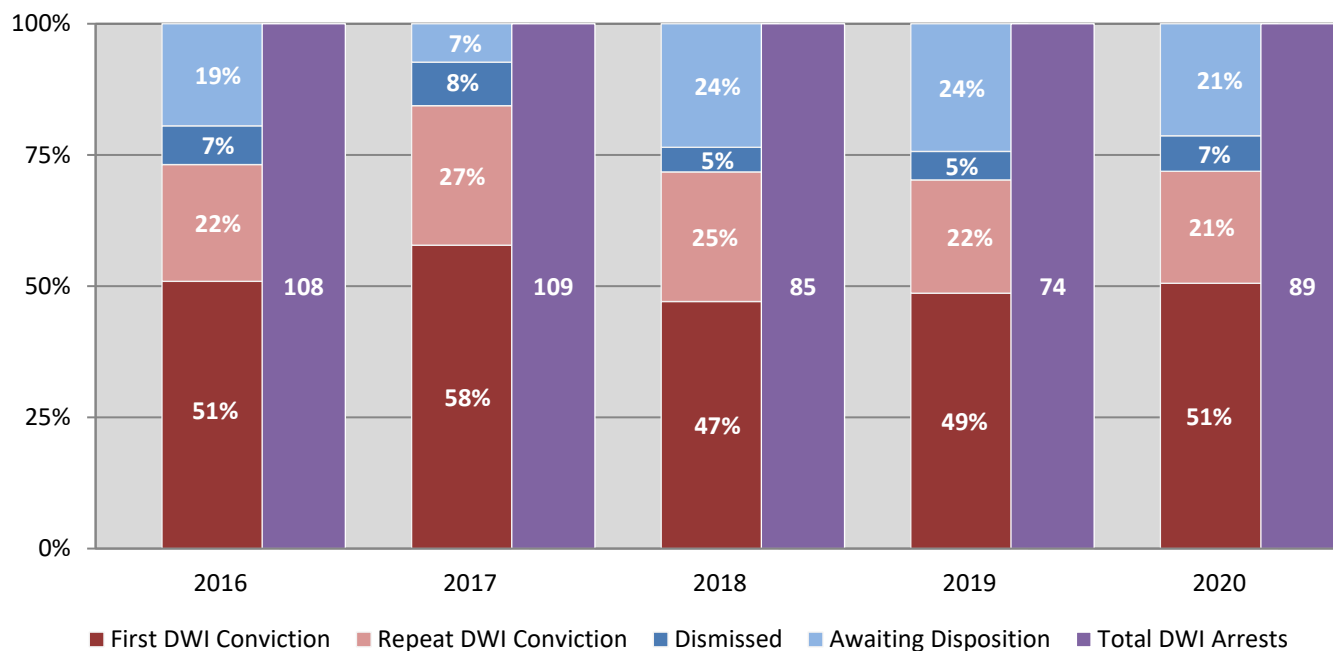
Court Disposition	Average Number of Days		Deviation from Statewide Average
	Luna County	Statewide	
DWI Conviction	120	200	<b>-80</b>
DWI Dismissal	116	196	<b>-79</b>

**Table 34: Court Disposition of DWI Arrests in Luna County, 2016-2020**

Year of DWI Arrest <sup>1</sup>	Court Disposition				Total DWI Arrests
	First DWI Conviction	Repeat DWI Conviction	Dismissed	Awaiting Disposition	
2016	55	24	8	21	108
2017	63	29	9	8	109
2018	40	21	4	20	85
2019	36	16	4	18	74
2020	45	19	6	19	89

<sup>1</sup> Values are based upon the year of the arrest.

**Figure 14: Court Dispositions by Percentage of DWI Arrests in Luna County, 2016-2020**



\*Table 34 contains the values used to calculate percentages shown in Figure 14.