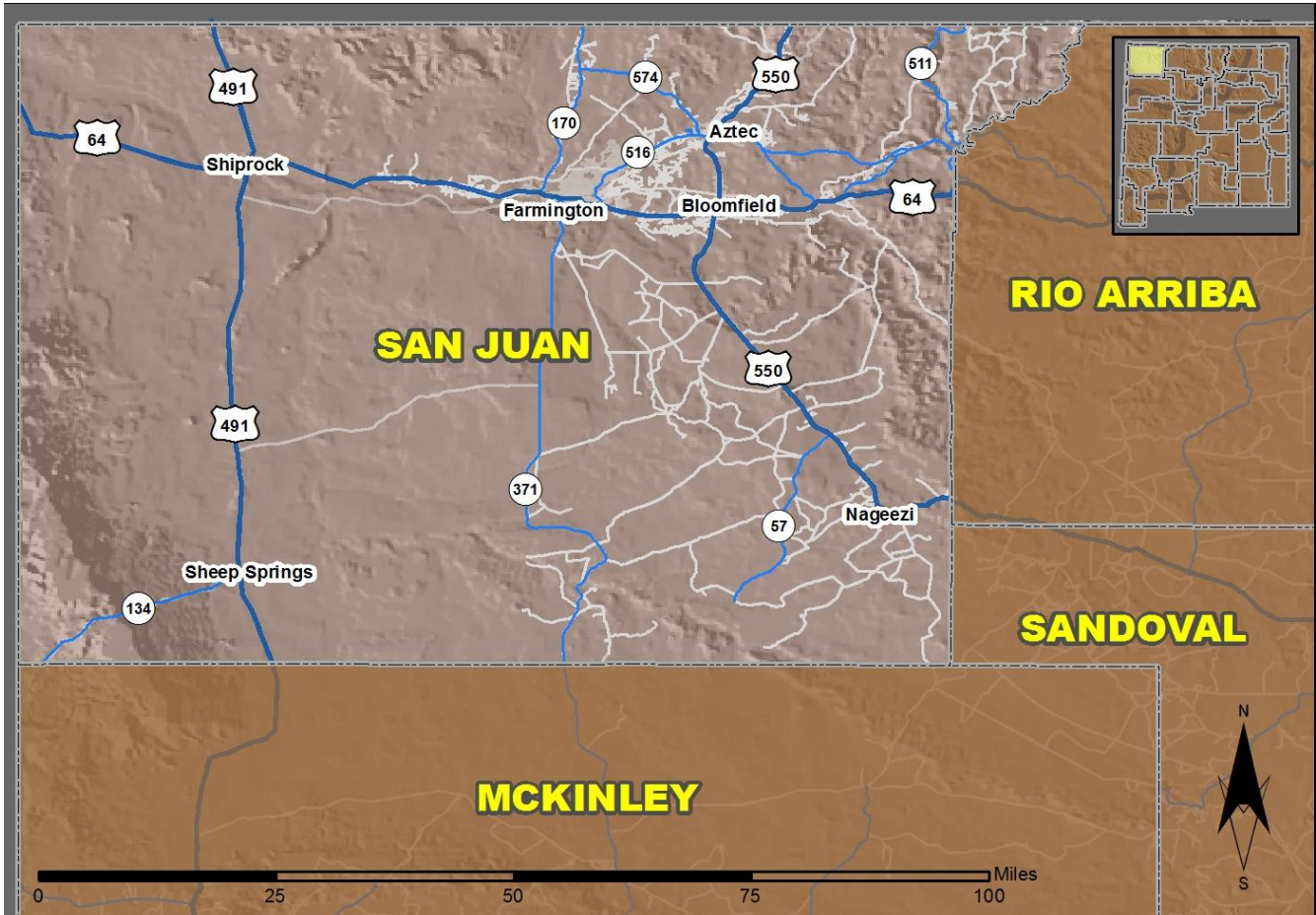


# 2020 Community Report

## San Juan County



Produced for the New Mexico Department of Transportation,  
Traffic Safety Division, Traffic Records Bureau,  
Under Contract 6093 by the University of New Mexico,  
Geospatial and Population Studies, Traffic Research Unit

Distributed in compliance with New Mexico Statute 66-7-214  
as a reference source regarding New Mexico traffic crashes

For the purposes of this report, data are compiled by the University of New Mexico, Geospatial and Population Studies, Traffic Research Unit (TRU), on behalf of the New Mexico Department of Transportation (NMDOT). Data in this report may differ from that in other data sources, such as the Federal Fatality Analysis Reporting System (FARS), due to the timing of publications and rules for how data are compiled and maintained in Federal vs. State databases. If you have questions regarding this report, please contact the Traffic Safety Division at 505-827-0427.

<https://gps.unm.edu/tru/crash-reports/community-reports>

## Definitions

---

**Aggravated DWI** – An arrest for 1) driving with a BAC of 0.16 or higher, 2) driving under the influence of alcohol or drugs and causing bodily injury to a human being as a result, or 3) driving under the influence of alcohol or drugs and refusing to submit to a BAC test at the time of arrest for DWI.

**Alcohol-involved Crash** – A crash for which the Uniform Crash Report indicated that 1) a DWI citation was issued, 2) alcohol was a contributing factor, or 3) a person in control of a motor vehicle, a pedalcyclist, or a pedestrian was suspected of being under the influence of alcohol.

**Alcohol-involved Driver** – A person in control of a motor vehicle, a pedalcyclist, or a pedestrian who was cited for DWI or indicated on the Uniform Crash Report as being either suspected or determined by testing to be under the influence of alcohol. There can be multiple alcohol-involved drivers in a single alcohol-involved crash.

**Crash** – A reported incident on a public roadway involving one or more motor vehicles that resulted in death, personal injury, or at least \$500 in property damage. Crashes on private property (such as a parking lot) are not included.

**DWI Arrest (Citation)** – An arrest for either DWI or aggravated DWI. New Mexico's legal limit for presumption of driving while intoxicated (DWI) is 0.08 BAC for non-commercial drivers older than 21 years of age, 0.04 for commercial vehicle drivers, and 0.02 for drivers younger than 21 years of age.

**DWI Conviction** – A conviction for driving under the intoxicating influence of alcohol, narcotics, or pathogenic drugs, including for aggravated DWI.

**Fatal Crash** – A crash in which at least one person was killed. More than one person can be killed in a single fatal crash.

**Fatalities** – The number of people killed in a crash. The terms "killed" and "deaths" are synonymous with "fatalities." A fatality is crash-related if it occurs at the time of the crash or if a person involved in the crash dies within 30 days.

**First Harmful Event** – The event of the crash that produced the first injury or damage. First harmful event (FHE) replaced Crash Classification starting in 2020. FHE and its' subanalysis data are derived from Crash Classification and Analysis for crashes that occurred prior to 2020 and for any agencies not using the E July 2018 Uniform Crash Report, which became available in 2020. Statistics for the categories of "Other Non-Motorist" and "Other" are not available prior to 2020.

**Injury Crash** – A reported crash in which at least one person was injured. Injury crashes each involve at least one suspected serious injury (Class A), suspected minor injury (Class B), or possible injury (Class C). Fatal crashes are not included.

**Missing Data** – An indication that the applicable field on the UCR form was left blank or contained an invalid code. Starting with crashes that occurred in 2012, improvements in the identification of missing data in the NMDOT crash database led to an increase in the reported amount of missing data.

**Pedalcyclists, All** – All people on any pedalcycle or in any pedalcycle trailer, and who are involved in a collision with a motor vehicle. Consists of pedalcycle operators and pedalcycle passengers. Historically, "pedalcyclists" included both pedalcycle operators and passengers. A pedalcycle is a mechanism of transport that is powered solely by pedals.

**Pedestrians, All** – All persons not occupying either a motor vehicle or a pedalcycle, and who are involved in a collision with a motor vehicle. Historically, "pedestrians" have also included people on personal conveyances (e.g., wheelchair or skateboard).

## Sources

---

**Crash Data** – New Mexico Department of Transportation, Traffic Safety Division, Traffic Records Bureau, Traffic Crash Database, as of the report date below. Crash data are compiled using NMDOT Uniform Crash Reports (UCR), submitted by law enforcement agencies in the state, for any incident on a public roadway involving one or more motor vehicles that resulted in death, injury, or at least \$500 in property damage. These reports are processed by the NMDOT Traffic Records Bureau and analyzed by the University of New Mexico, Geospatial and Population Studies, Traffic Research Unit (TRU).

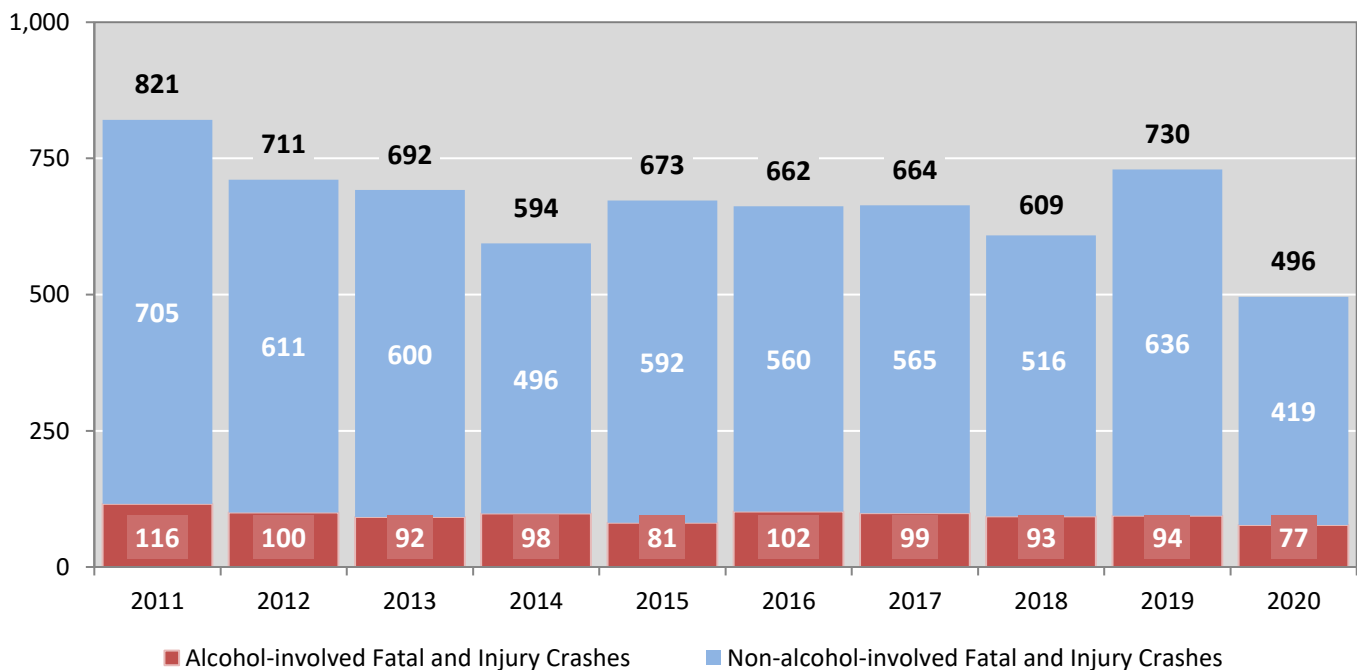
**DWI Arrest Data** – New Mexico Taxation and Revenue Department, Motor Vehicle Division, DWI File, as of the date listed in the footnote of Table 32. Repeat offenders are identified by the combination of account key, arrest date, and citation number. County data are based upon the county where the arrest took place. City data are based upon the city where the offender resides.

**Urban Areas** – Areas defined by the New Mexico Department of Transportation, Asset Management and Planning, 2010 U.S. Census Urbanized Area Boundaries, NMDOT-Adjusted, and U.S. Census Urban Clusters, August 21, 2013. Urban areas for crash years 2013-2017 include a 1/2 mile buffer extending out from those urban boundaries. In crashes before 2013, "urban" was defined as a town or city with a population of at least 2,500 people.

**Table 1: Total Crashes and Alcohol-involved Crashes by Crash Severity in San Juan County, 2011-2020**

Year	Total Crashes				Alcohol-involved Crashes			
	Fatal	Injury	Property Damage Only	Total	Fatal	Injury	Property Damage Only	Total
2011	24	797	1,610	<b>2,431</b>	17	99	97	<b>213</b>
2012	25	686	1,606	<b>2,317</b>	14	86	99	<b>199</b>
2013	23	669	1,467	<b>2,159</b>	13	79	87	<b>179</b>
2014	31	563	1,206	<b>1,800</b>	16	82	87	<b>185</b>
2015	28	645	1,450	<b>2,123</b>	14	67	100	<b>181</b>
2016	27	635	1,309	<b>1,971</b>	15	87	61	<b>163</b>
2017	30	634	1,248	<b>1,912</b>	15	84	70	<b>169</b>
2018	30	579	1,322	<b>1,931</b>	19	74	68	<b>161</b>
2019	29	701	1,534	<b>2,264</b>	16	78	94	<b>188</b>
2020	22	474	1,175	<b>1,671</b>	14	63	80	<b>157</b>

**Figure 1: Alcohol-involved Fatal and Injury Crashes Compared with Non-alcohol-involved Fatal and Injury Crashes in San Juan County, 2011-2020**



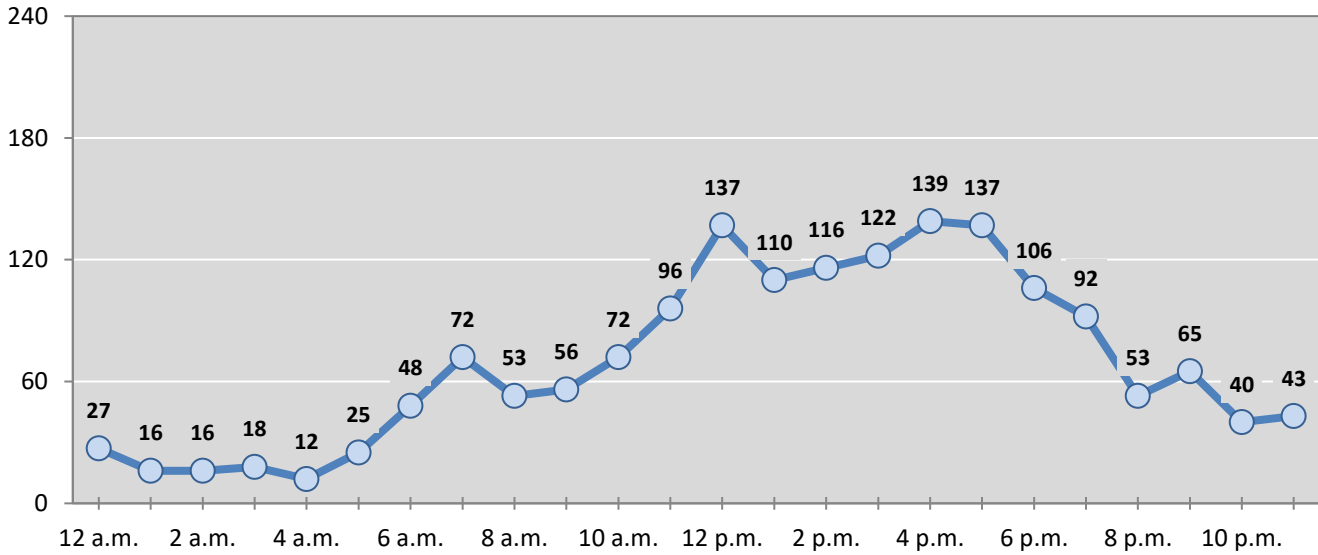
**Table 2: Crashes by Month in San Juan County, 2016-2020**

Month	Crashes					5-Year Average
	2016	2017	2018	2019	2020	
January	181	158	104	201	182	165
February	199	132	145	183	154	163
March	177	160	171	179	113	160
April	158	151	148	185	78	144
May	88	175	185	167	111	145
June	167	148	143	166	126	150
July	151	142	141	191	147	154
August	173	161	163	218	134	170
September	172	183	164	169	139	165
October	188	129	173	204	167	172
November	113	173	185	196	143	162
December	204	200	209	205	177	199
<b>Total Crashes</b>	<b>1,971</b>	<b>1,912</b>	<b>1,931</b>	<b>2,264</b>	<b>1,671</b>	<b>1,950</b>

**Table 3: Alcohol-involved Crashes by Month in San Juan County, 2016-2020**

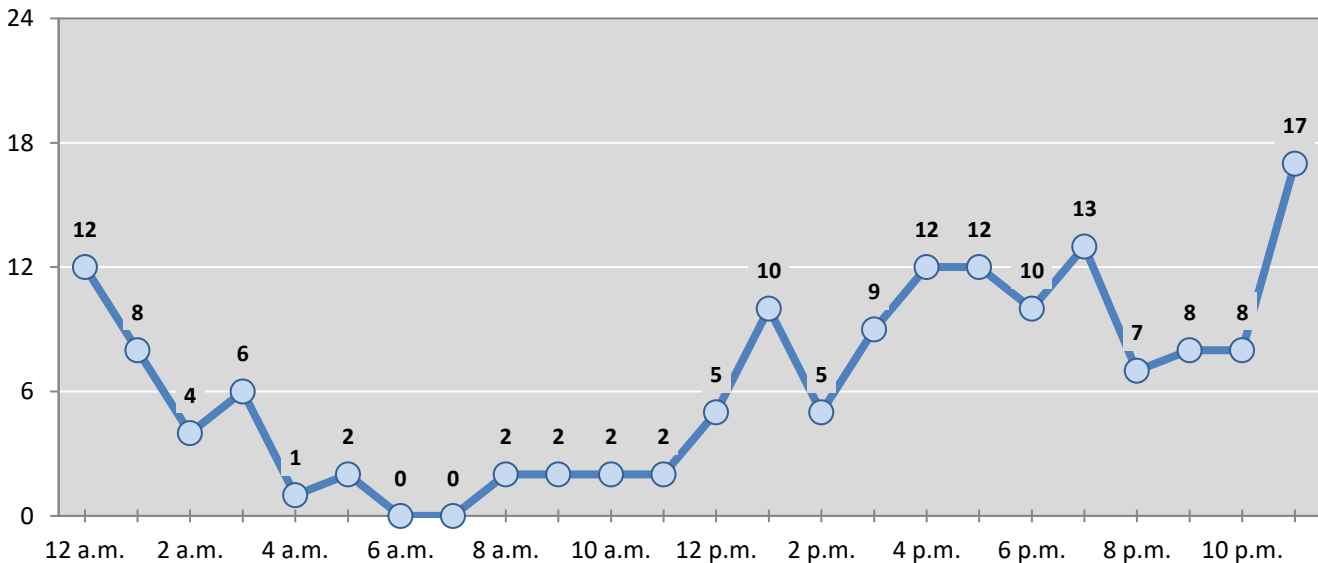
Month	Alcohol-involved Crashes					5-Year Average
	2016	2017	2018	2019	2020	
January	14	9	10	18	14	13
February	17	10	16	17	12	14
March	13	13	12	13	10	12
April	9	10	13	13	9	11
May	4	8	14	10	12	10
June	19	18	8	17	12	15
July	16	19	17	19	14	17
August	13	15	17	20	11	15
September	11	20	14	20	17	16
October	18	13	12	8	11	12
November	14	15	9	15	16	14
December	15	19	19	18	19	18
<b>Total Crashes</b>	<b>163</b>	<b>169</b>	<b>161</b>	<b>188</b>	<b>157</b>	<b>168</b>

**Figure 2: Crashes by Hour in San Juan County, 2020**



\* In 2020, San Juan County had 0 crashes for which hour data were missing.

**Figure 3: Alcohol-involved Crashes by Hour in San Juan County, 2020**



\* In 2020, San Juan County had 0 alcohol-involved crashes for which hour data were missing.

**Table 4: Total Crashes by Day of Week in San Juan County, 2016-2020**

Day of Week	Total Crashes					5-Year Average
	2016	2017	2018	2019	2020	
Sunday	141	180	164	156	141	156
Monday	300	276	267	361	237	288
Tuesday	362	295	270	360	245	306
Wednesday	292	280	286	339	261	292
Thursday	298	261	302	336	277	295
Friday	331	357	344	407	284	345
Saturday	247	263	298	305	226	268
<b>Total Crashes</b>	<b>1,971</b>	<b>1,912</b>	<b>1,931</b>	<b>2,264</b>	<b>1,671</b>	<b>1,950</b>

**Table 5: Heavy-truck Crashes by Day of Week in San Juan County, 2016-2020**

Day of Week	Heavy-truck Crashes					5-Year Average
	2016	2017	2018	2019	2020	
Sunday	2	3	5	5	8	5
Monday	16	19	15	14	20	17
Tuesday	16	17	12	20	15	16
Wednesday	18	19	6	19	20	16
Thursday	11	16	16	14	20	15
Friday	16	20	15	18	12	16
Saturday	8	9	8	11	9	9
<b>Total Crashes</b>	<b>87</b>	<b>103</b>	<b>77</b>	<b>101</b>	<b>104</b>	<b>94</b>

**Table 6: Motorcycle Crashes by Day of Week in San Juan County, 2016-2020**

Day of Week	Motorcycle Crashes <sup>1</sup>					5-Year Average
	2016	2017	2018	2019	2020	
Sunday	6	9	5	5	7	6
Monday	4	5	5	4	4	4
Tuesday	5	2	5	5	4	4
Wednesday	6	5	2	8	5	5
Thursday	11	6	8	3	4	6
Friday	4	6	6	7	7	6
Saturday	9	10	9	14	6	10
<b>Total Crashes</b>	<b>45</b>	<b>43</b>	<b>40</b>	<b>46</b>	<b>37</b>	<b>42</b>

<sup>1</sup> "Motorcycles" exclude ATVs.

**Table 7: Alcohol-involved Crashes by Day of Week in San Juan County, 2016-2020**

Day of Week	Alcohol-involved Crashes					5-Year Average
	2016	2017	2018	2019	2020	
Sunday	21	37	23	21	18	24
Monday	23	20	21	27	22	23
Tuesday	31	12	15	27	22	21
Wednesday	22	24	17	26	21	22
Thursday	21	14	21	18	19	19
Friday	21	30	24	30	22	25
Saturday	24	32	40	39	33	34
<b>Total Crashes</b>	<b>163</b>	<b>169</b>	<b>161</b>	<b>188</b>	<b>157</b>	<b>168</b>

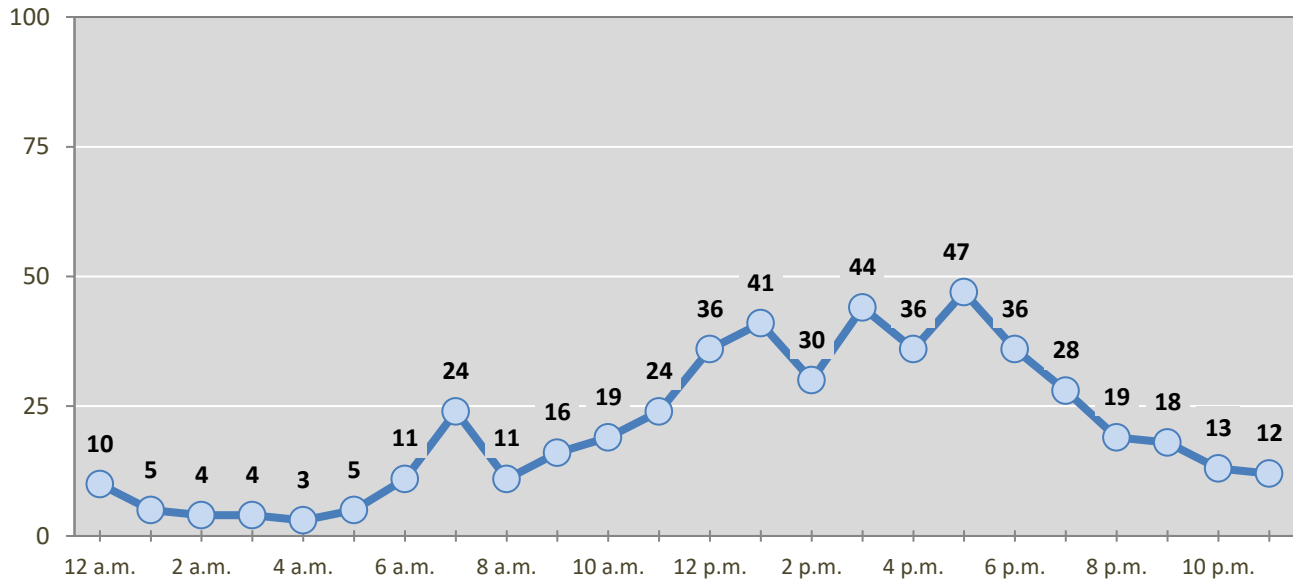
**Table 8: Fatal and Injury Crashes by Day of Week in San Juan County, 2016-2020**

Day of Week	Fatal and Injury Crashes					5-Year Average
	2016	2017	2018	2019	2020	
Sunday	51	73	65	47	45	56
Monday	98	80	89	112	78	91
Tuesday	94	99	94	125	79	98
Wednesday	98	88	83	111	64	89
Thursday	101	101	87	96	86	94
Friday	122	132	99	125	76	111
Saturday	98	91	92	114	68	93
<b>Total Crashes</b>	<b>662</b>	<b>664</b>	<b>609</b>	<b>730</b>	<b>496</b>	<b>632</b>

**Table 9: All Pedestrian and Pedalcycle Crashes by Day of Week in San Juan County, 2016-2020**

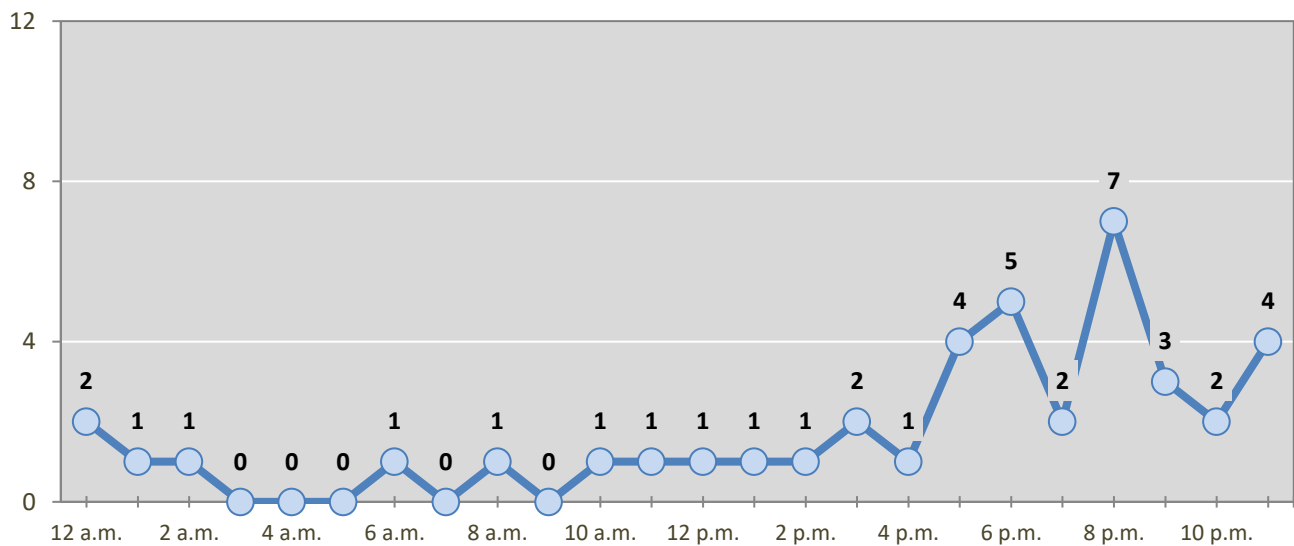
Day of Week	All Pedestrian and Pedalcycle Crashes					5-Year Average
	2016	2017	2018	2019	2020	
Sunday	3	5	5	6	4	5
Monday	8	6	9	12	5	8
Tuesday	7	7	6	10	10	8
Wednesday	6	8	8	5	4	6
Thursday	3	6	9	9	6	7
Friday	9	11	7	9	8	9
Saturday	4	6	11	5	4	6
<b>Total Crashes</b>	<b>40</b>	<b>49</b>	<b>55</b>	<b>56</b>	<b>41</b>	<b>48</b>

**Figure 4: Fatal and Injury Crashes by Hour in San Juan County, 2020**



\* In 2020, San Juan County had 0 crashes for which hour data were missing.

**Figure 5: All Pedestrian and Pedalcycle Crashes by Hour in San Juan County, 2020**



\* In 2020, San Juan County had 0 crashes for which hour data were missing.



**Table 10: Severity of Injuries to People in Crashes by Rural and Urban Locations and Alcohol Involvement in San Juan County, 2020**

Rural and Urban Locations by Alcohol Involvement	People in Crashes by Severity of Injuries					Total People
	Fatalities (Class K)	Suspected Serious Injuries (Class A)	Suspected Minor Injuries (Class B)	Possible Injuries (Class C)	No Apparent Injuries (Class O)	
<b>People in Alcohol-involved Crashes</b>	<b>16</b>	<b>18</b>	<b>32</b>	<b>38</b>	<b>210</b>	<b>314</b>
Urban	5	4	19	27	139	194
Rural Non-Interstate	11	14	13	11	71	120
Rural Interstate	0	0	0	0	0	0
<b>People in Crashes</b>	<b>24</b>	<b>53</b>	<b>181</b>	<b>434</b>	<b>3,284</b>	<b>3,976</b>
Urban	6	18	106	335	2,521	2,986
Rural Non-Interstate	18	35	75	99	763	990
Rural Interstate	0	0	0	0	0	0
<b>Percent in Alcohol-involved Crashes</b>	<b>67%</b>	<b>34%</b>	<b>18%</b>	<b>9%</b>	<b>6%</b>	<b>8%</b>

**Table 11: Total Crashes by Rural and Urban Locations and Crash Severity in San Juan County, 2016-2020**

Crash Severity by Rural and Urban Locations	Crashes by Year					5-Year Average
	2016	2017	2018	2019	2020	
<b>Total Rural Interstate</b>	<b>0</b>	<b>0</b>	<b>0</b>	<b>0</b>	<b>0</b>	<b>0</b>
Fatal Crash	0	0	0	0	0	0
Injury Crash	0	0	0	0	0	0
Property Damage Only Crash	0	0	0	0	0	0
<b>Total Rural Non-Interstate</b>	<b>321</b>	<b>347</b>	<b>537</b>	<b>630</b>	<b>470</b>	<b>461</b>
Fatal Crash	18	18	24	23	16	20
Injury Crash	110	120	168	217	136	150
Property Damage Only Crash	193	209	345	390	318	291
<b>Total Urban</b>	<b>1,650</b>	<b>1,565</b>	<b>1,394</b>	<b>1,634</b>	<b>1,201</b>	<b>1,489</b>
Fatal Crash	9	12	6	6	6	8
Injury Crash	525	514	411	484	338	454
Property Damage Only Crash	1,116	1,039	977	1,144	857	1,027

**Table 12: Total Crashes by First Harmful Event in San Juan County, 2016-2020**

First Harmful Event <sup>1</sup>	Total Crashes by Year					5-Year Average
	2016	2017	2018	2019	2020	
<b>Collision with Animal</b>	155	184	157	163	152	<b>162</b>
<b>Collision with Fixed Object</b>	243	209	194	236	213	<b>219</b>
<b>Collision with Motor Vehicle</b>	1,384	1,292	1,312	1,623	1,091	<b>1,340</b>
<b>Collision with Other Non-Fixed Object</b>	17	39	42	50	39	<b>37</b>
<b>Collision with Person</b>	40	49	55	56	41	<b>48</b>
Pedalcycle	11	11	15	16	9	<b>12</b>
Pedestrian	29	36	40	40	32	<b>35</b>
Other Non-Motorist	0	0	0	0	0	<b>0</b>
Missing Subanalysis Data	0	2	0	0	0	<b>0</b>
<b>Non-Collision</b>	131	139	169	136	95	<b>134</b>
Overturn/Rollover	104	97	112	92	58	<b>93</b>
All Other Non-Collision	27	42	57	44	37	<b>41</b>
<b>Other</b>	0	0	0	0	34	<b>34</b>
<b>Missing Data</b>	1	0	2	0	6	<b>2</b>
<b>Total Crashes</b>	<b>1,971</b>	<b>1,912</b>	<b>1,931</b>	<b>2,264</b>	<b>1,671</b>	<b>1,950</b>

<sup>1</sup> The options of “Other Non-Motorist” and “Other” were not available before 2020. The addition of options in 2020 decreases the use of previously available options.

**Table 13: Vehicles in Crashes by Vehicle Type in San Juan County, 2016-2020**

Vehicle Type <sup>1</sup>	Vehicles in Crashes by Vehicle Type					5-Year Average
	2016	2017	2018	2019	2020	
Buses	10	10	7	8	4	<b>8</b>
Motorcycles/ATVs	54	48	45	51	44	<b>48</b>
Passenger Cars	1,359	1,636	1,757	2,151	1,415	<b>1,664</b>
Pedalcycles	11	12	15	16	9	<b>13</b>
Pedestrians, All	30	37	41	41	32	<b>36</b>
Pickups	1,085	814	733	902	732	<b>853</b>
Semis/Heavy Trucks	93	106	80	105	107	<b>98</b>
Vans/SUVs/4WDs	815	667	670	714	527	<b>679</b>
Other Vehicles	28	10	8	2	3	<b>10</b>
Missing Data	65	46	32	96	41	<b>56</b>
<b>Total Vehicles</b>	<b>3,550</b>	<b>3,386</b>	<b>3,388</b>	<b>4,086</b>	<b>2,914</b>	<b>3,465</b>

<sup>1</sup> Pedestrians and pedalcycles are counted as non-motorized vehicles, when involved in a crash with a motor vehicle. "All pedestrians" encompasses pedestrians with or without personal conveyance (e.g., wheelchair, skateboard). See Page 18 for more data on non-motorized vehicles in crashes.

**Table 14: Motor Vehicle Drivers in Crashes by Vehicle Type and Age Group in San Juan County, 2020**

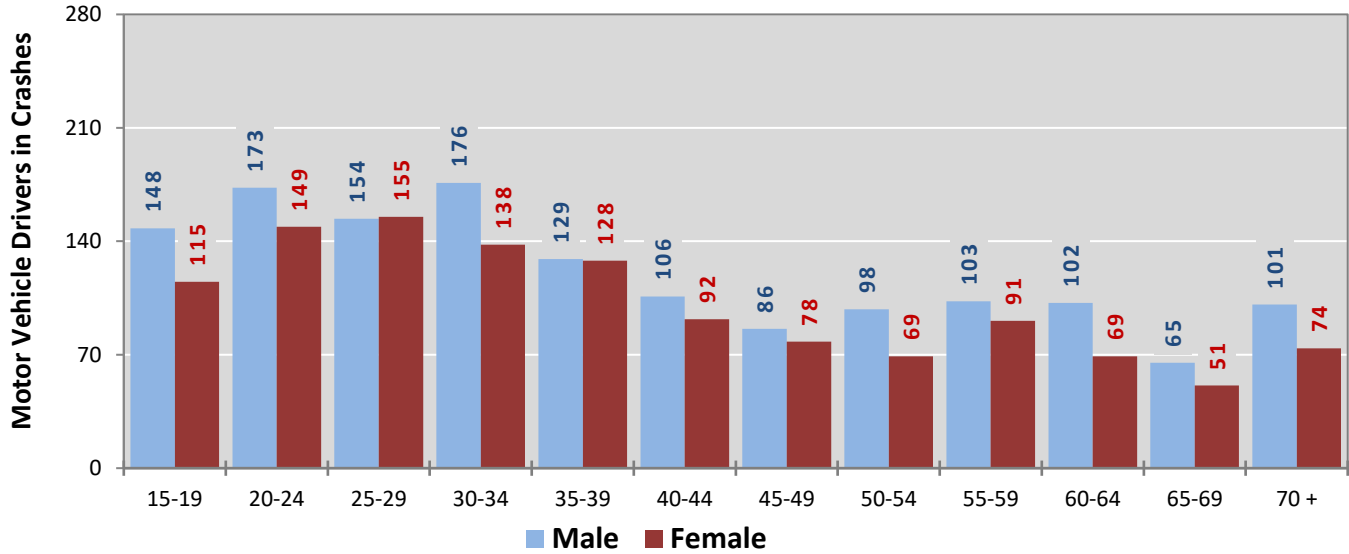
Age Groups	Motor Vehicle <sup>1</sup> Drivers by Vehicle Type and Age Group								Total Drivers
	Bus	Motor-cycle/ATV	Passenger	Pickup	Semi/Heavy Truck	Van 4WD SUV	Other Vehicle	Missing Data	
15-19	0	2	178	47	1	36	0	0	264
20-24	0	6	211	48	5	53	0	0	323
25-29	1	3	173	69	10	53	1	0	310
30-34	0	6	144	71	18	76	0	0	315
35-39	0	5	129	63	12	47	1	0	257
40-44	1	3	90	59	6	39	0	0	198
45-49	0	5	75	41	12	31	0	0	164
50-54	0	3	67	53	8	37	0	0	168
55-59	1	5	75	66	10	37	0	0	194
60-64	0	1	65	66	6	33	0	0	171
65-69	1	2	42	37	7	27	0	0	116
70 +	0	0	86	48	5	36	1	0	176
Missing Data	0	3	80	64	7	22	0	41	217
<b>Total Drivers</b>	<b>4</b>	<b>44</b>	<b>1,415</b>	<b>732</b>	<b>107</b>	<b>527</b>	<b>3</b>	<b>41</b>	<b>2,873</b>

**Table 15: Alcohol-involved Motor Vehicle Drivers in Crashes by Vehicle Type and Age Group in San Juan County, 2020**

Age Groups	Alcohol-involved Motor Vehicle <sup>1</sup> Drivers by Vehicle Type and Age Group								Total Drivers
	Bus	Motor-cycle/ATV	Passenger	Pickup	Semi/Heavy Truck	Van 4WD SUV	Other Vehicle	Missing Data	
15-19	0	0	12	3	0	2	0	0	17
20-24	0	1	22	7	0	6	0	0	36
25-29	0	1	17	7	1	2	0	0	28
30-34	0	1	10	6	0	8	0	0	25
35-39	0	2	8	0	0	3	0	0	13
40-44	0	0	6	5	0	2	0	0	13
45-49	0	0	2	1	0	1	0	0	4
50-54	0	0	2	1	0	0	0	0	3
55-59	0	0	3	3	0	0	0	0	6
60-64	0	0	1	0	0	0	0	0	1
65-69	0	1	1	0	0	0	0	0	2
70 +	0	0	0	0	0	1	0	0	1
Missing Data	0	0	0	0	0	0	0	0	0
<b>Total Drivers</b>	<b>0</b>	<b>6</b>	<b>84</b>	<b>33</b>	<b>1</b>	<b>25</b>	<b>0</b>	<b>0</b>	<b>149</b>

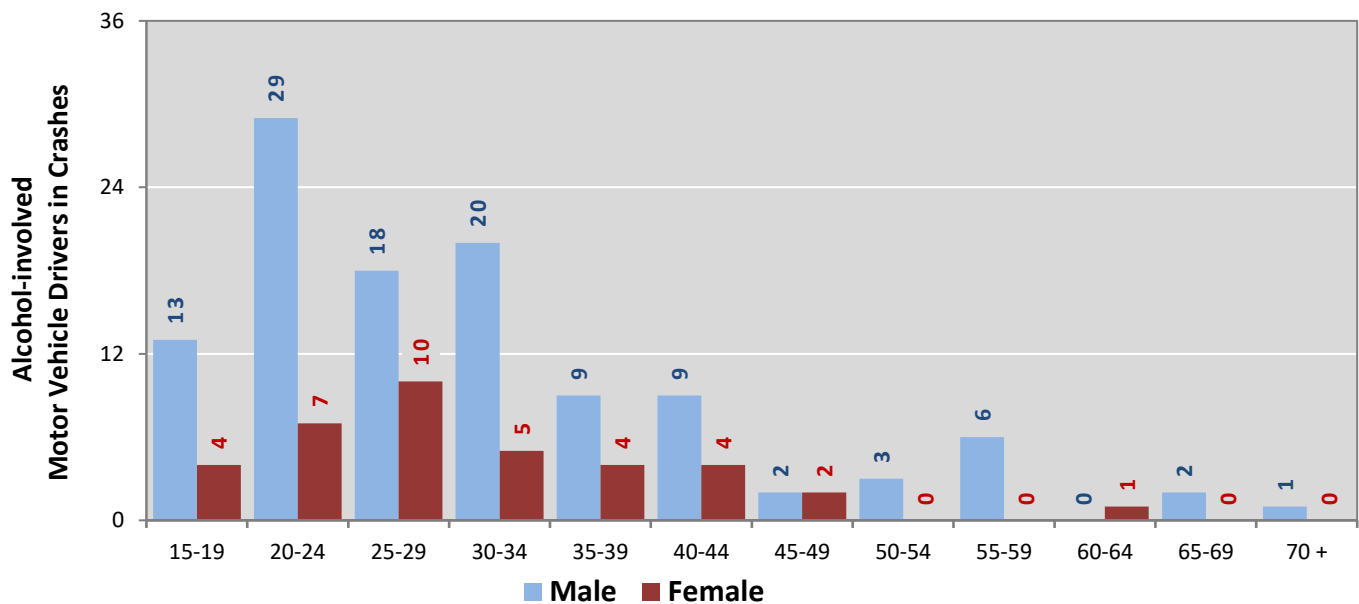
<sup>1</sup> See Page 18 for data on drivers of non-motorized vehicles in crashes (i.e. pedestrians and pedalcyclists).

**Figure 6: Motor Vehicle Drivers in Crashes by Age Group and Sex in San Juan County, 2020**



\* In 2020, San Juan County had 223 drivers in crashes for which age or sex data were missing.

**Figure 7: Alcohol-involved Motor Vehicle Drivers in Crashes by Age Group and Sex in San Juan County, 2020**



\* In 2020, San Juan County had 0 drivers in crashes for which age or sex data were missing.

**Table 16: Alcohol-involved Motor Vehicle Drivers Under 21 (Ages 15-20) in Crashes in San Juan County, 2016-2020**

Age <sup>1</sup>	Year					5-Year Total
	2016	2017	2018	2019	2020	
15	1	0	0	0	2	3
16	0	2	1	0	0	3
17	1	0	3	1	2	7
18	1	5	0	2	4	12
19	8	2	4	4	9	27
20	6	2	4	5	2	19
<b>Total Drivers</b>	<b>17</b>	<b>11</b>	<b>12</b>	<b>12</b>	<b>19</b>	<b>71</b>

**Table 17: Motor Vehicle Drivers Under 21 (Ages 15-20) in Crashes by Age, Sex and Alcohol Involvement in San Juan County, 2020**

Age <sup>1</sup>	Total Drivers				Alcohol-involved Drivers			
	Sex		Total Drivers	Percent of Total	Sex		Total Drivers	Percent of Total
	Male	Female			Male	Female		
15	8	7	15	5%	0	2	2	11%
16	27	18	45	14%	0	0	0	0%
17	31	25	56	17%	2	0	2	11%
18	40	23	63	20%	3	1	4	21%
19	42	42	84	26%	8	1	9	47%
20	31	28	59	18%	1	1	2	11%
<b>Total Drivers</b>	<b>179</b>	<b>143</b>	<b>322</b>	<b>100%</b>	<b>14</b>	<b>5</b>	<b>19</b>	<b>100%</b>

<sup>1</sup> For analysis of drivers under age 21, when the driver age or sex are not identified on the crash report (typically hit-and-run drivers), the driver data are considered unreliable and are excluded from the analysis.

**Table 18: Frequency of Contributing Factors in Crashes  
by Crash Severity in San Juan County, 2020**

Contributing Factors	Frequency of Contributing Factor <sup>1</sup> by Crash Severity			
	Frequency in Fatal Crashes	Frequency in Injury Crashes	Frequency in Property Damage Only Crashes	Frequency in All Crashes
<b>Human</b>	<b>52</b>	<b>791</b>	<b>1,460</b>	<b>2,303</b>
Driver Inattention	2	220	472	694
Failed to Yield Right of Way	1	118	172	291
Following Too Closely	0	78	205	283
Under the Influence Of Alcohol	17	64	80	161
Other Improper Driving	2	46	82	130
Excessive Speed	5	56	64	125
Disregarded Traffic Signal	0	30	41	71
Made Improper Turn	0	21	47	68
Driver Distracted by Other Activity	0	24	34	58
Avoid No Contact Other	4	21	32	57
Improper Lane Change	0	9	43	52
Speed Too Fast For Conditions	1	20	30	51
Avoid No Contact Vehicle	0	12	36	48
Drove Left of Center	3	16	29	48
Improper Backing	0	2	42	44
Under the Influence Of Drugs	7	10	17	34
Pedestrian Error	10	16	1	27
Cell Phone	0	5	9	14
Passed Stop Sign	0	7	6	13
Improper Overtaking	0	2	6	8
Driver Distracted by Passenger	0	4	4	8
Vehicle Skidded Before Braking	0	4	1	5
Failed to Yield For Police Vehicle	0	1	3	4
Driver Distracted By Texting	0	3	0	3
High-Speed Pursuit	0	1	1	2
Driverless Moving Vehicle	0	0	1	1
Failed to Yield For Emer. Vehicle	0	1	0	1
Driver Distracted by Talking on Hands-Free Device	0	0	1	1
Driver Distracted by Talking on Cell Phone	0	0	1	1
<b>Vehicle</b>	<b>0</b>	<b>16</b>	<b>53</b>	<b>69</b>
Inadequate Brakes	0	3	19	22
Other Mechanical Defect	0	6	16	22
Defective Tires	0	2	7	9
Defective Steering	0	1	5	6
Lights (Head, Signal, Tail)	0	3	1	4
Wheels	0	1	1	2
Windows/Windshield	0	0	2	2
Coupling Device (Hitch, Chains)	0	0	1	1
Mirrors	0	0	1	1
Exhaust System	0	0	0	0
Suspension	0	0	0	0
Wipers	0	0	0	0
<b>Environment</b>	<b>0</b>	<b>29</b>	<b>143</b>	<b>172</b>
Animal(s) In Roadway	0	8	68	76
Road Surface Conditions	0	6	18	24
Low Visibility Due to Glare	0	6	9	15
Weather Conditions	0	0	13	13
Obstruction in Road	0	2	8	10
Traffic Congestion	0	2	7	9
Debris	0	2	7	9
Backup - Prior Crash	0	0	7	7
Other Visual Obstruction(s)	0	1	4	5
Backup - Prior Incident	0	0	2	2
Road Defect	0	2	0	2
Low Visibility Due to Smoke	0	0	0	0
Traffic Control Missing	0	0	0	0
<b>Other</b>	<b>14</b>	<b>369</b>	<b>948</b>	<b>1,331</b>
Other - No Driver Error	6	319	793	1,118
Missing Data	1	24	104	129
None	7	26	51	84
<b>Total</b>	<b>66</b>	<b>1,205</b>	<b>2,604</b>	<b>3,875</b>

<sup>1</sup> Multiple contributing factors may be reported for any vehicle in a crash.

### Table 19: People in Crashes by First Harmful Event and Severity of Injuries in San Juan County, 2020

First Harmful Event (FHE) and Subanalysis	People in Crashes by Severity of Injuries					Total People
	Fatalities (Class K)	Suspected Serious Injuries (Class A)	Suspected Minor Injuries (Class B)	Possible Injuries (Class C)	No Apparent Injuries (Class O)	
<b>Collision with Animal</b>	<b>0</b>	<b>0</b>	<b>6</b>	<b>8</b>	<b>216</b>	<b>230</b>
Deer	0	0	2	6	158	166
Small Domestic Animal	0	0	1	0	26	27
Horse	0	0	3	2	7	12
Small Game Animal	0	0	0	0	12	12
Cattle/Cow	0	0	0	0	7	7
Elk	0	0	0	0	2	2
Antelope	0	0	0	0	1	1
Other (Bird, Cougar, Sheep, Goat)	0	0	0	0	1	1
Bear	0	0	0	0	0	0
Other Large Domestic Animal	0	0	0	0	0	0
Other Large Game Animal	0	0	0	0	0	0
Missing Subanalysis Data	0	0	0	0	2	2
<b>Collision with Fixed Object</b>	<b>2</b>	<b>8</b>	<b>32</b>	<b>23</b>	<b>224</b>	<b>289</b>
Utility Pole/Light Support	0	2	10	1	32	45
Fence	1	0	1	1	41	44
Guardrail, End or Face	1	3	1	4	28	37
Other Post, Pole or Support	0	0	3	2	19	24
Other Fixed Object	0	0	1	1	20	22
Embankment	0	0	2	5	14	21
Median	0	1	2	0	14	17
Curb	0	0	1	3	11	15
Traffic Sign Support	0	0	1	2	12	15
Ditch	0	0	2	1	8	11
Wall or Building	0	0	0	1	7	8
Traffic Barrier, Concrete	0	0	0	1	2	3
Tree (standing)	0	0	3	0	0	3
Bridge Pier, Support, Rail, or Overhead	0	0	0	0	1	1
Culvert	0	0	0	0	1	1
Traffic Barrier, Cable	0	0	0	0	0	0
Other (incl. hydrant, box, cattle guard, plant)	0	2	5	1	14	22
Missing Subanalysis Data	0	0	0	0	0	0
<b>Collision with Motor Vehicle</b>	<b>8</b>	<b>20</b>	<b>88</b>	<b>360</b>	<b>2,597</b>	<b>3,073</b>
MV in Transport	8	20	88	350	2,487	2,953
Parked MV	0	0	0	10	110	120
Missing Subanalysis Data	0	0	0	0	0	0
<b>Collision with Other Non-Fixed Object</b>	<b>0</b>	<b>0</b>	<b>5</b>	<b>1</b>	<b>71</b>	<b>77</b>
Struck by falling, shifting cargo	0	0	0	0	26	26
Work Zone / Maintenance Equipment	0	0	0	0	3	3
Railway Vehicle	0	0	0	0	0	0
Other Non-fixed Object	0	0	5	1	42	48
Missing Subanalysis Data	0	0	0	0	0	0
<b>Collision with Person</b>	<b>10</b>	<b>11</b>	<b>13</b>	<b>6</b>	<b>52</b>	<b>92</b>
Pedestrian	10	6	10	5	40	71
Pedalcycle	0	5	3	1	12	21
Other Non-Motorist	0	0	0	0	0	0
Missing Subanalysis Data	0	0	0	0	0	0
<b>Non-Collision</b>	<b>4</b>	<b>13</b>	<b>31</b>	<b>26</b>	<b>74</b>	<b>148</b>
Overturn/Rollover	2	10	28	22	30	92
Cargo/Equipment Loss or Shift	0	0	0	0	6	6
Jackknife	0	0	2	1	2	5
Immersion, Full or Partial	0	1	0	1	0	2
Fell/Jumped from MV	0	0	0	0	0	0
Fire/Explosion	0	0	0	0	0	0
Thrown or Falling Object	0	0	0	0	0	0
Other Non-Collision	2	2	1	2	35	42
Missing Subanalysis Data	0	0	0	0	1	1
<b>Other</b>	<b>0</b>	<b>1</b>	<b>6</b>	<b>6</b>	<b>38</b>	<b>51</b>
<b>Missing FHE and Subanalysis Data</b>	<b>0</b>	<b>0</b>	<b>0</b>	<b>4</b>	<b>12</b>	<b>16</b>
<b>Total People</b>	<b>24</b>	<b>53</b>	<b>181</b>	<b>434</b>	<b>3,284</b>	<b>3,976</b>

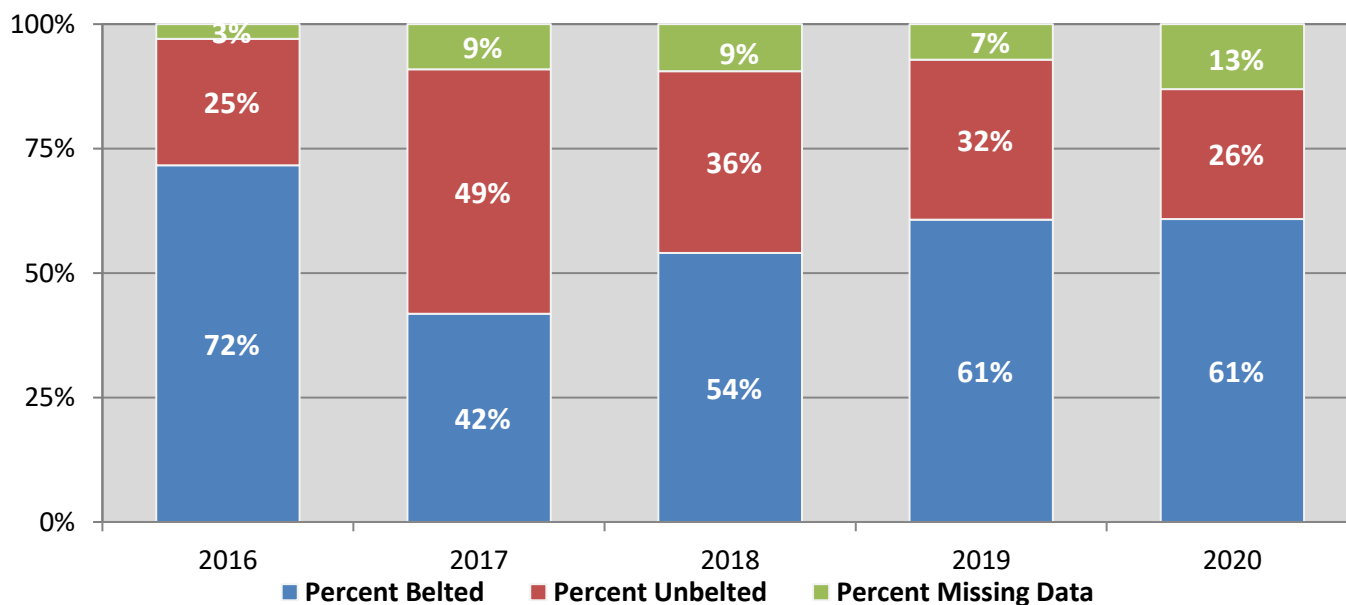
**Table 20: Killed or Injured Unbelted People in Crashes  
by Sex and Age Group in San Juan County, 2020**

Age Groups	Unbelted People Killed or Injured <sup>1,2</sup>				Total People
	Male	Percent of Male	Female	Percent of Female	
0-4	0	0%	0	0%	0
5-9	0	0%	1	6%	1
10-14	0	0%	1	6%	1
15-19	0	0%	2	12%	2
20-24	3	16%	4	24%	7
25-29	2	11%	0	0%	2
30-34	4	21%	1	6%	5
35-39	1	5%	2	12%	3
40-44	3	16%	1	6%	4
45-49	2	11%	0	0%	2
50-54	2	11%	0	0%	2
55-59	2	11%	1	6%	3
60-64	0	0%	0	0%	0
65-69	0	0%	1	6%	1
70 +	0	0%	3	18%	3
Missing Data	0	0%	0	0%	0
<b>Total People</b>	<b>19</b>	<b>100%</b>	<b>17</b>	<b>100%</b>	<b>36</b>

<sup>1</sup> People injured are in one of three categories: suspected serious injury, suspected minor injury, or possible injury.

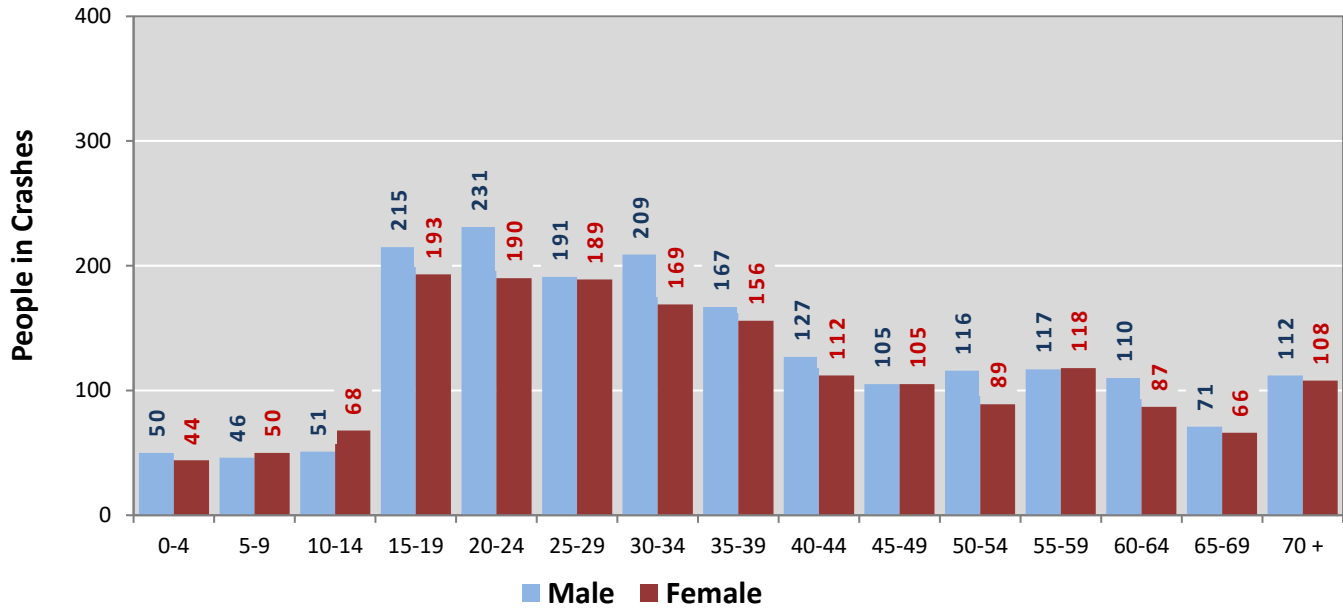
<sup>2</sup> Excludes people in or on buses, heavy trucks, motorcycles, or ATVs.

**Figure 8: Seatbelt Use by People in Crashes with Fatal or Suspected Serious Injuries in San Juan County, 2016-2020**



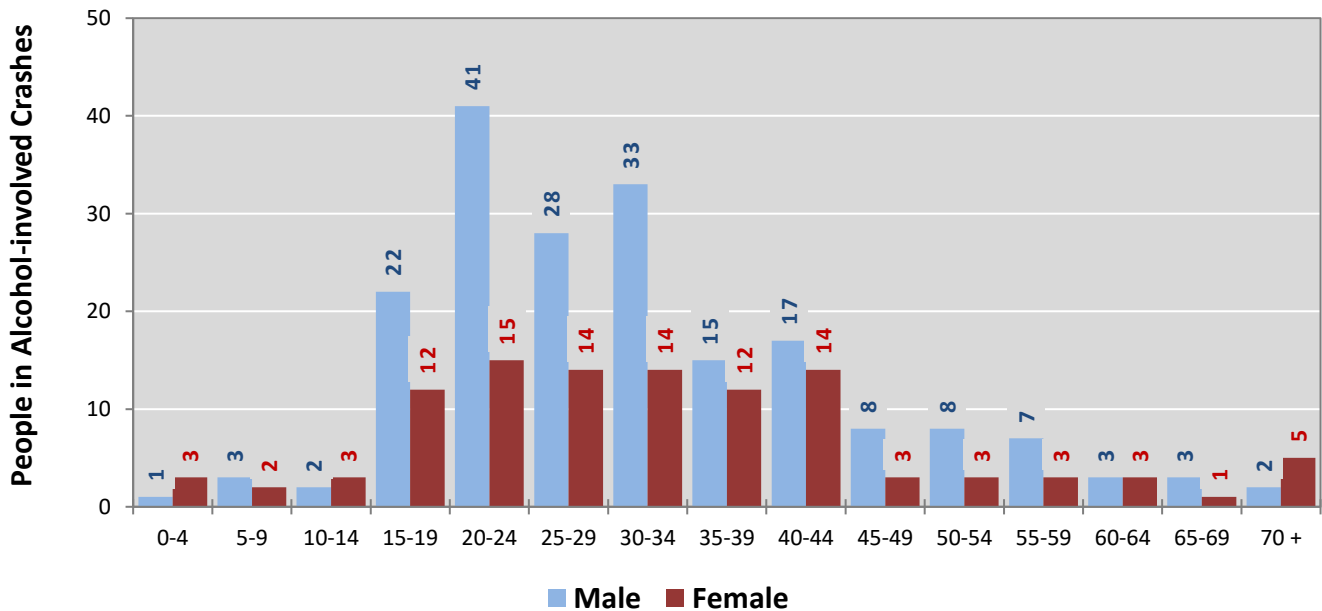


**Figure 9: People in Crashes by Age Group and Sex in San Juan County, 2020**



\* In 2020, San Juan County had 314 people in crashes for which age or sex data were missing.

**Figure 10: People in Alcohol-involved Crashes by Age Group and Sex in San Juan County, 2020**



\* In 2020, San Juan County had 14 people in alcohol-involved crashes for which age or sex data were missing.

**Table 21: All Pedestrians and All Pedalcyclists in Crashes by Age Group in San Juan County, 2016-2020**

Age Groups	All Pedestrians and All Pedalcyclists <sup>1</sup> in Crashes					5-Year Total People
	2016	2017	2018	2019	2020	
0-4	1	0	0	0	0	1
5-9	0	2	1	1	0	4
10-14	4	4	3	4	2	17
15-19	2	2	5	2	5	16
20-24	2	7	5	3	2	19
25-29	10	5	10	9	6	40
30-34	4	4	6	5	3	22
35-39	0	1	5	6	4	16
40-44	3	3	0	6	0	12
45-49	3	5	4	2	3	17
50-54	4	4	4	3	5	20
55-59	2	4	1	2	3	12
60-64	0	2	2	4	0	8
65-69	1	1	3	0	2	7
70 +	3	3	3	4	3	16
Missing Data	2	2	4	6	3	17
<b>Total People</b>	<b>41</b>	<b>49</b>	<b>56</b>	<b>57</b>	<b>41</b>	<b>244</b>

**Table 22: All Pedestrians and Pedalcycle Operators in Crashes by Alcohol Involvement and Severity of Injuries in San Juan County, 2020**

Alcohol Involvement	All Pedestrians and Pedalcycle Operators <sup>1</sup> in Crashes					Total People
	Fatalities (Class K)	Suspected Serious Injuries (Class A)	Suspected Minor Injuries (Class B)	Possible Injuries (Class C)	No Apparent Injury (Class O)	
<b>Pedalcycle Operators</b>	<b>0</b>	<b>5</b>	<b>3</b>	<b>1</b>	<b>0</b>	<b>9</b>
Involved	0	0	0	0	0	0
Not Involved	0	5	3	1	0	9
<b>All Pedestrians</b>	<b>10</b>	<b>6</b>	<b>10</b>	<b>2</b>	<b>4</b>	<b>32</b>
Involved	6	3	3	0	0	12
Not Involved	4	3	7	2	4	20
<b>Total People</b>	<b>10</b>	<b>11</b>	<b>13</b>	<b>3</b>	<b>4</b>	<b>41</b>

<sup>1</sup> "All pedestrians" encompasses pedestrians with and without personal conveyance (e.g., wheelchair, skateboard). "All pedalcyclists" encompasses both pedalcycle operators and pedalcycle passengers. All pedestrians and pedalcycle operators are counted as non-motorized vehicles when involved in a crash with a motor vehicle.

**Table 23: Occupants of Passenger Vehicles in Crashes  
by Severity of Injuries and Belt Usage in San Juan County, 2020**

Severity of Injuries	Injury Class	Occupants of Passenger Vehicles <sup>1</sup>			
		Belted	Unbelted	Missing Data	Total
Fatalities	K	5	4	0	9
Suspected Serious Injuries	A	23	8	6	37
Suspected Minor Injuries	B	117	13	12	142
Possible Injuries	C	377	11	33	421
No Apparent Injuries	O	2,669	22	407	3,098
<b>Total Occupants of Passenger Vehicles</b>		<b>3,191</b>	<b>58</b>	<b>458</b>	<b>3,707</b>

<sup>1</sup> Occupants of passenger cars, SUVs, 4WDs, vans, and pickup trucks only.

**Table 24: Motorcyclists in Crashes  
by Severity of Injuries and Helmet Usage in San Juan County, 2020**

Severity of Injuries	Injury Class	Motorcyclists in Crashes <sup>1</sup>			
		Helmeted	Unhelmeted	Missing Data	Total
Fatalities	K	1	3	0	4
Suspected Serious Injuries	A	1	2	1	4
Suspected Minor Injuries	B	7	12	1	20
Possible Injuries	C	3	1	1	5
No Apparent Injuries	O	1	3	1	5
<b>Total Motorcyclists</b>		<b>13</b>	<b>21</b>	<b>4</b>	<b>38</b>

<sup>1</sup> Excludes people on ATVs.

**Table 25: Occupants of Passenger Vehicles in Crashes  
by Year, Belt Usage, and Percent Killed in San Juan County, 2016-2020**

Year	Occupant Fatalities of Passenger Vehicles <sup>1</sup>				Total Occupants of Passenger Vehicles <sup>1</sup>				Percent Killed	
	Belted	Unbelted	Missing Data	Total Fatalities	Belted	Unbelted	Missing Data	Total Occupants	Belted	Unbelted
2016	10	10	1	21	4,603	50	269	4,922	0.22%	20.0%
2017	9	14	0	23	4,338	66	304	4,708	0.21%	21.2%
2018	4	19	0	23	4,231	100	370	4,701	0.09%	19.0%
2019	9	11	0	20	4,970	75	537	5,582	0.18%	14.7%
2020	5	4	0	9	3,191	58	458	3,707	0.16%	6.9%
<b>Average</b>	<b>7.4</b>	<b>11.6</b>	<b>0.2</b>	<b>19.2</b>	<b>4,266.6</b>	<b>69.8</b>	<b>387.6</b>	<b>4,724.0</b>	<b>0.17%</b>	<b>16.6%</b>

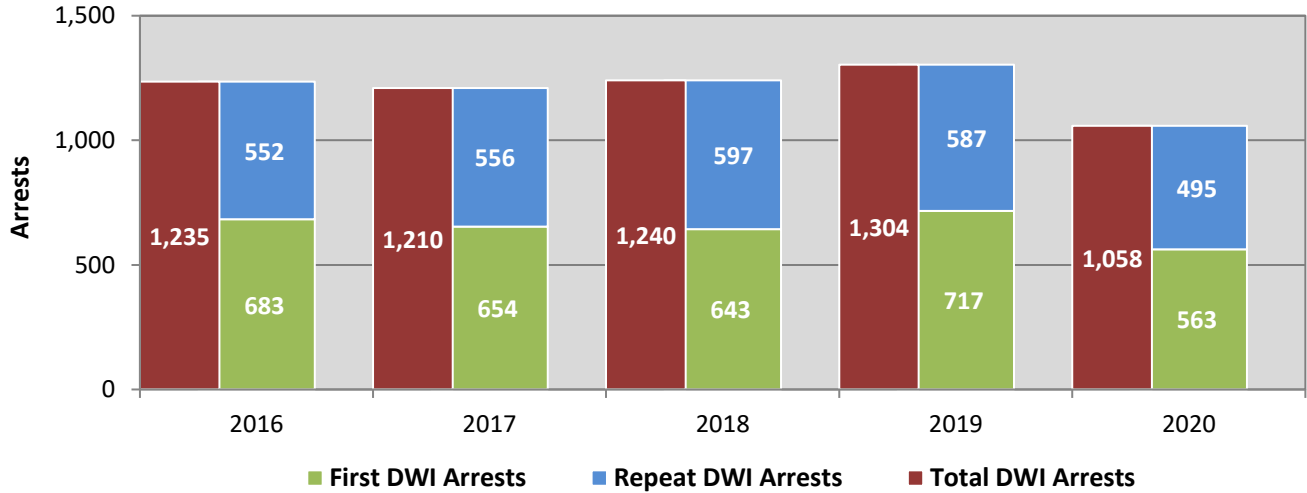
<sup>1</sup> Occupants of passenger cars, SUVs, 4WDs, vans, and pickup trucks only.

**Table 26: Motorcyclists in Crashes  
by Year, Helmet Usage, and Percent Killed in San Juan County, 2016-2020**

Year	Motorcyclist Fatalities <sup>1</sup>				Total Motorcyclists <sup>1</sup>				Percent Killed	
	Helmeted	Unhelmeted	Missing Data	Total Fatalities	Helmeted	Unhelmeted	Missing Data	Total Occupants	Helmeted	Unhelmeted
2016	0	2	0	2	23	6	20	49	0.0%	33.3%
2017	0	2	0	2	17	17	15	49	0.0%	11.8%
2018	0	2	0	2	15	23	7	45	0.0%	8.7%
2019	1	6	0	7	19	18	12	49	5.3%	33.3%
2020	1	3	0	4	13	21	4	38	7.7%	14.3%
<b>Average</b>	<b>0.4</b>	<b>3.0</b>	<b>0.0</b>	<b>3.4</b>	<b>17.4</b>	<b>17.0</b>	<b>11.6</b>	<b>46.0</b>	<b>2.3%</b>	<b>17.6%</b>

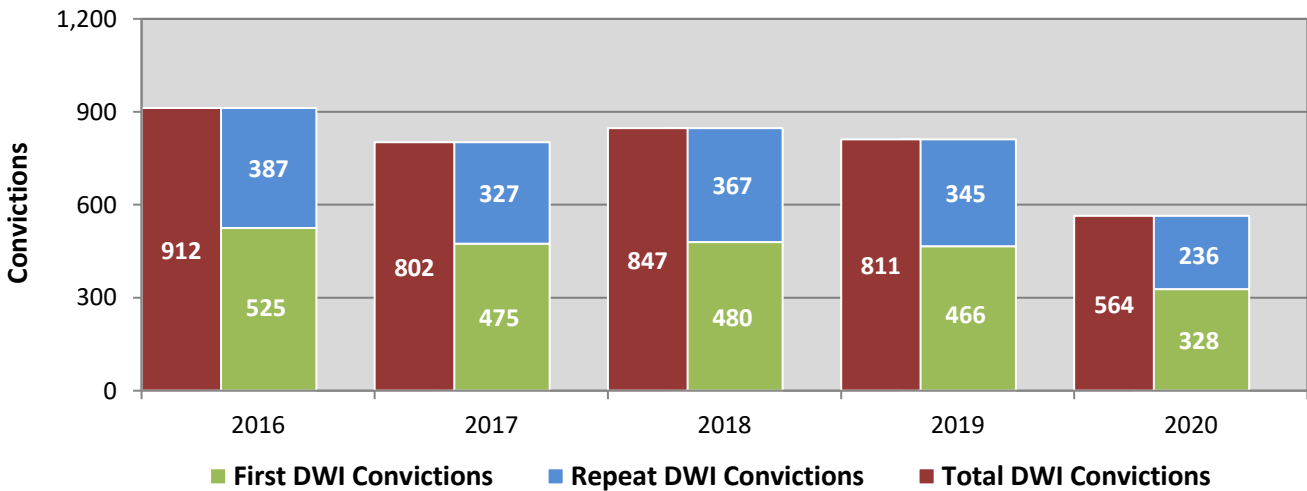
<sup>1</sup> Excludes people on ATVs.

**Figure 11: DWI Arrests in San Juan County,  
Showing First and Repeat DWI Arrests, 2016-2020**



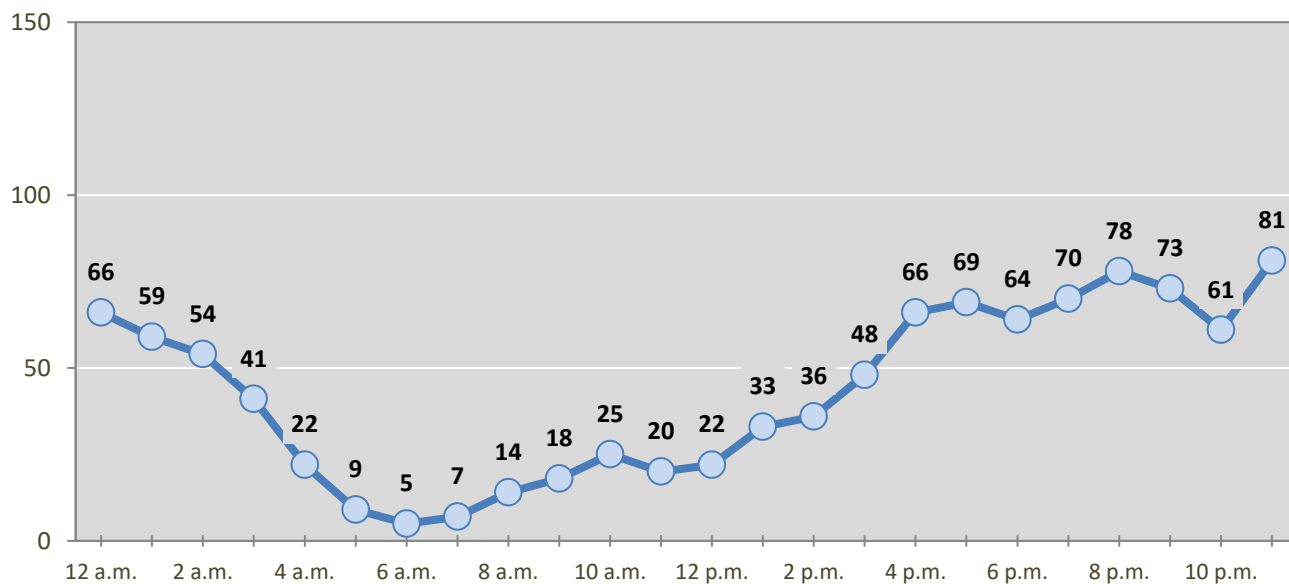
\*Values are based upon the year of the arrest.

**Figure 12: DWI Convictions in San Juan County,  
Showing First and Repeat DWI Convictions, 2016-2020**



\*Values are based upon the year of the conviction.

**Figure 13: DWI Arrests by Hour in San Juan County, 2020**



\* In 2020, San Juan County had 17 arrests for which hour data were missing.

**Table 27: DWI Arrests by Day of Week in San Juan County, 2016-2020**

Day of Week	Year					5-Year Average
	2016	2017	2018	2019	2020	
Sunday	178	228	183	239	145	195
Monday	153	115	135	140	118	132
Tuesday	137	109	111	130	124	122
Wednesday	143	120	148	142	139	138
Thursday	184	163	185	172	148	170
Friday	203	218	188	197	167	195
Saturday	237	257	290	284	217	257
<b>Total Arrests</b>	<b>1,235</b>	<b>1,210</b>	<b>1,240</b>	<b>1,304</b>	<b>1,058</b>	<b>1,209</b>

**Table 28: Driver First DWI Arrests by Age Group in San Juan County, 2016-2020**

Age Groups	Driver First DWI Arrests <sup>1</sup>				
	2016	2017	2018	2019	2020
15-19	56	45	34	39	37
20-24	146	138	147	177	131
25-29	180	159	185	188	155
30-34	101	118	89	113	88
35-39	68	66	70	76	62
40-44	39	35	39	48	26
45-49	29	30	34	28	28
50-54	23	19	19	15	15
55-59	26	20	15	16	13
60-64	6	17	7	8	3
65-69	7	3	3	7	1
70 +	2	4	1	1	4
Missing Data	0	0	0	1	0
<b>Total Drivers</b>	<b>683</b>	<b>654</b>	<b>643</b>	<b>717</b>	<b>563</b>

<sup>1</sup> Values are based upon the year of the arrest.

**Table 29: Driver Repeat DWI Arrests by Age Group in San Juan County, 2016-2020**

Age Groups	Driver Repeat DWI Arrests <sup>1</sup>				
	2016	2017	2018	2019	2020
15-19	2	9	3	4	3
20-24	56	38	37	54	46
25-29	100	119	113	125	88
30-34	116	117	138	100	102
35-39	87	86	97	100	70
40-44	45	47	59	66	71
45-49	42	46	67	45	41
50-54	42	33	38	40	34
55-59	30	36	22	25	15
60-64	18	14	14	16	18
65-69	10	8	7	7	5
70 +	4	3	2	5	2
Missing Data	0	0	0	0	0
<b>Total Drivers</b>	<b>552</b>	<b>556</b>	<b>597</b>	<b>587</b>	<b>495</b>

<sup>1</sup> Values are based upon the year of the arrest.

**Table 30: Driver First DWI Convictions by Age Group in San Juan County, 2016-2020**

Age Groups	Driver First DWI Convictions <sup>1</sup>				
	2016	2017	2018	2019	2020
15-19	28	22	23	30	12
20-24	127	120	115	127	90
25-29	150	141	125	116	83
30-34	83	63	78	75	64
35-39	51	54	48	41	26
40-44	23	25	30	25	20
45-49	23	12	25	23	18
50-54	17	16	15	12	7
55-59	13	11	11	7	4
60-64	4	5	8	4	2
65-69	3	3	1	6	2
70 +	3	3	1	0	0
Missing Data	0	0	0	0	0
<b>Total Drivers</b>	<b>525</b>	<b>475</b>	<b>480</b>	<b>466</b>	<b>328</b>

<sup>1</sup> Values are based upon the year of the conviction.

**Table 31: Driver Repeat DWI Convictions by Age Group in San Juan County, 2016-2020**

Age Groups	Driver Repeat DWI Convictions <sup>1</sup>				
	2016	2017	2018	2019	2020
15-19	1	2	5	3	2
20-24	40	26	29	23	18
25-29	66	59	78	72	45
30-34	77	70	89	58	50
35-39	76	44	49	59	39
40-44	35	35	40	40	27
45-49	35	35	31	31	18
50-54	29	28	17	24	14
55-59	18	17	11	24	14
60-64	6	6	14	5	8
65-69	4	2	4	4	0
70 +	0	3	0	2	1
Missing Data	0	0	0	0	0
<b>Total Drivers</b>	<b>387</b>	<b>327</b>	<b>367</b>	<b>345</b>	<b>236</b>

<sup>1</sup> Values are based upon the year of the conviction.



**Table 32: Court Disposition of DWI Arrests for San Juan County and the State, 2020**

Court Disposition of DWI Arrest <sup>1</sup>	San Juan County	Statewide	Percent of Statewide
Total DWI Arrests	1,058	8,233	<b>12.9%</b>
DWI Arrests Resulting in Convictions	526	3,975	<b>13.2%</b>
DWI Arrests Resulting in Dismissals <sup>2</sup>	30	587	<b>5.1%</b>
DWI Arrests Awaiting Disposition	502	3,671	<b>13.7%</b>

<sup>1</sup> These are the number of DWI arrests in 2020 and whether the case resulted in a conviction or dismissal, or is still awaiting court disposition, as reported in the NM MVD DWI File, as of December 2021.

<sup>2</sup> For this table, a very small number of "not guilty" rulings may be included in the category Dismissals.

**Table 33: Average Number of Days from Date of DWI Arrest to Date of Court Disposition in San Juan County and the State, 2020**

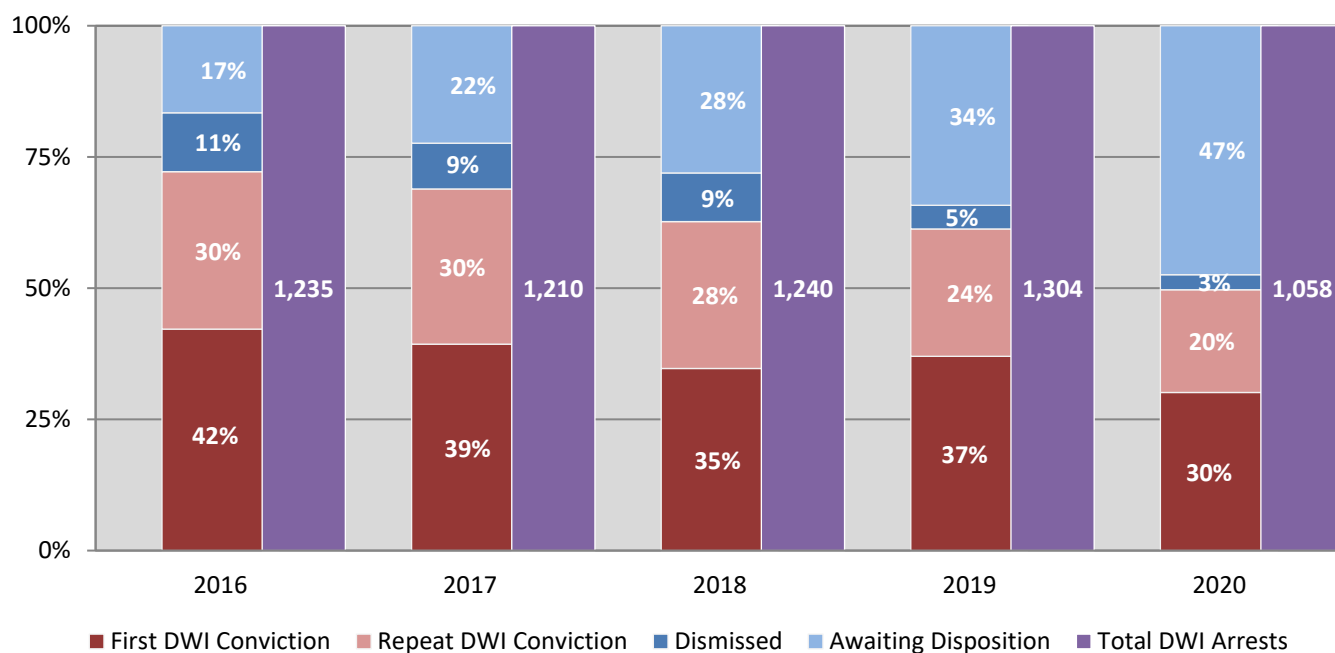
Court Disposition	Average Number of Days		Deviation from Statewide Average
	San Juan County	Statewide	
DWI Conviction	206	200	<b>6</b>
DWI Dismissal	246	196	<b>50</b>

**Table 34: Court Disposition of DWI Arrests in San Juan County, 2016-2020**

Year of DWI Arrest <sup>1</sup>	Court Disposition				Total DWI Arrests
	First DWI Conviction	Repeat DWI Conviction	Dismissed	Awaiting Disposition	
2016	521	371	138	205	1,235
2017	476	358	105	271	1,210
2018	430	347	115	348	1,240
2019	483	316	59	446	1,304
2020	319	207	30	502	1,058

<sup>1</sup> Values are based upon the year of the arrest.

**Figure 14: Court Dispositions by Percentage of DWI Arrests in San Juan County, 2016-2020**



\*Table 34 contains the values used to calculate percentages shown in Figure 14.