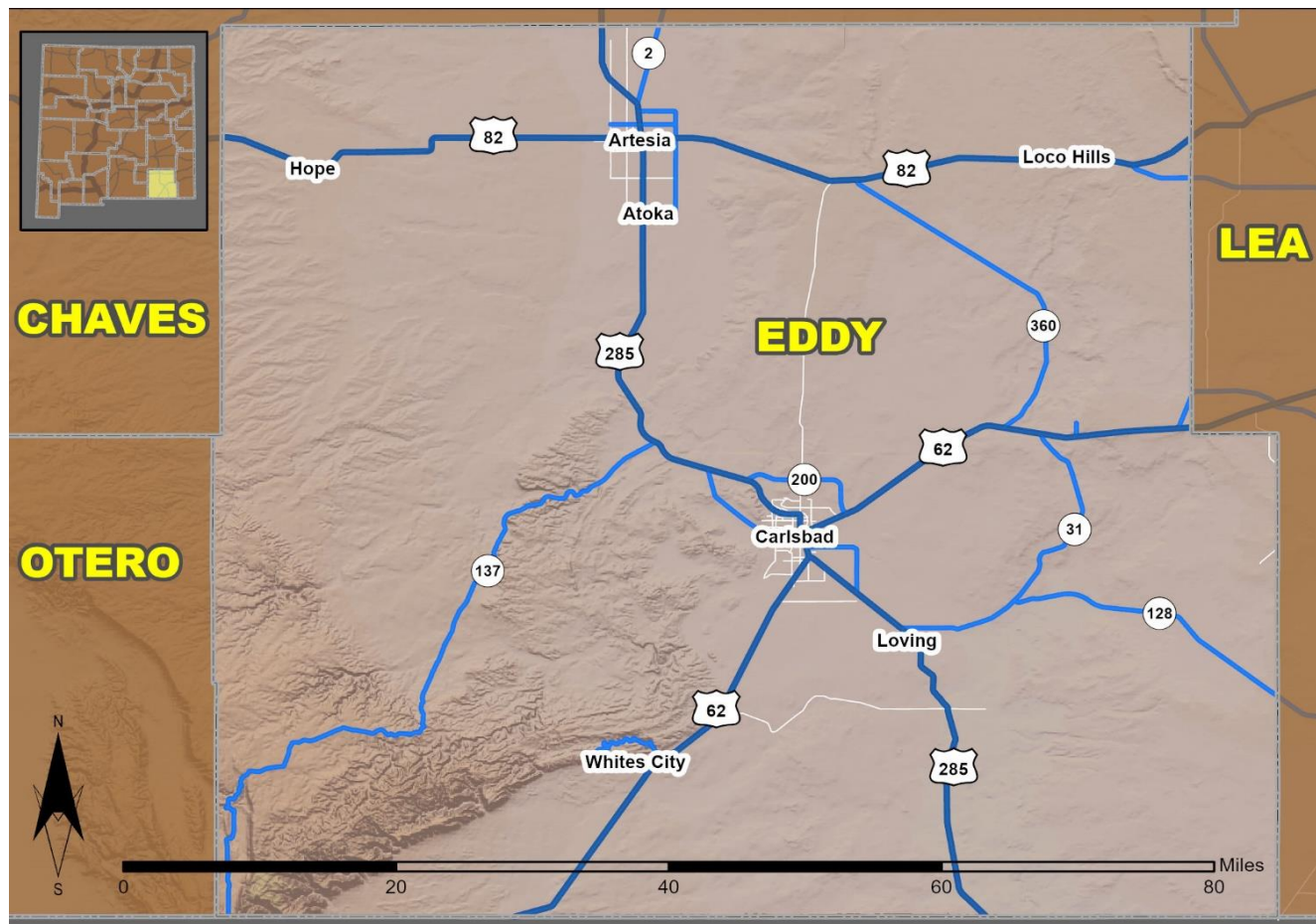


# 2022 Community Report

## Eddy County



Produced for the New Mexico Department of Transportation,  
Traffic Safety Division, Traffic Records Bureau,  
Under Contract 6380 by the University of New Mexico,  
Geospatial and Population Studies, Traffic Research Unit

Distributed in compliance with New Mexico Statute 66-7-214  
as a reference source regarding New Mexico traffic crashes

For the purposes of this report, data are compiled by the University of New Mexico, Geospatial and Population Studies, Traffic Research Unit (TRU), on behalf of the New Mexico Department of Transportation (NMDOT). Data in this report may differ from that in other data sources, such as the Federal Fatality Analysis Reporting System (FARS), due to the timing of publications and rules for how data are compiled and maintained in Federal vs. State databases. If you have questions regarding this report, please contact the Traffic Safety Division at 505-827-0427.

<https://gps.unm.edu/tru/reports/community-reports/index.html>

## Definitions

---

**Aggravated DWI** – An arrest for 1) driving with a BAC of 0.16 or higher, 2) driving under the influence of alcohol or drugs and causing bodily injury to a human being as a result, or 3) driving under the influence of alcohol or drugs and refusing to submit to a BAC test at the time of arrest for DWI.

**Alcohol-involved Crash** – A crash for which the Uniform Crash Report indicated that 1) a DWI citation was issued, 2) alcohol was a contributing factor, or 3) a person in control of a motor vehicle, a pedalcyclist, or a pedestrian was suspected of being under the influence of alcohol.

**Alcohol-involved Driver** – A person in control of a motor vehicle, a pedalcyclist, or a pedestrian who was cited for DWI or indicated on the Uniform Crash Report as being either suspected or determined by testing to be under the influence of alcohol. There can be multiple alcohol-involved drivers in a single alcohol-involved crash.

**Crash** – A reported incident on a public roadway involving one or more motor vehicles that resulted in death, personal injury, or at least \$500 in property damage. Crashes on private property (such as a parking lot) are not included.

**DWI Arrest (Citation)** – An arrest for either DWI or aggravated DWI. New Mexico’s legal limit for presumption of driving while intoxicated (DWI) is 0.08 BAC for non-commercial drivers older than 21 years of age, 0.04 for commercial vehicle drivers, and 0.02 for drivers younger than 21 years of age.

**DWI Conviction** – A conviction for driving under the intoxicating influence of alcohol, narcotics, or pathogenic drugs, including for aggravated DWI.

**Fatal Crash** – A crash in which at least one person was killed. More than one person can be killed in a single fatal crash.

**Fatalities** – The number of people killed in a crash. The terms “killed” and “deaths” are synonymous with “fatalities.” A fatality is crash-related if it occurs at the time of the crash or if a person involved in the crash dies within 30 days.

**First Harmful Event** – The event of the crash that produced the first injury or damage. First harmful event (FHE) replaced Crash Classification starting in 2020. FHE and its' subanalysis data are derived from Crash Classification and Analysis for crashes that occurred prior to 2020 and for any agencies not using the E Juy 2018 Uniform Crash Report, which became available in 2020. Statistics for the categories of "Other Non-Motorist" and "Other" are not available prior to 2020.

**Injury Crash** – A reported crash in which at least one person was injured. Injury crashes each involve at least one suspected serious injury (Class A), suspected minor injury (Class B), or possible injury (Class C). Fatal crashes are not included.

**Missing Data** – An indication that the applicable field on the UCR form was left blank or contained an invalid code. Starting with crashes that occurred in 2012, improvements in the identification of missing data in the NMDOT crash database led to an increase in the reported amount of missing data.

**Pedalcyclists, All** – All people on any pedalcycle or in any pedalcycle trailer, and who are involved in a collision with a motor vehicle. Consists of pedalcycle operators and pedalcycle passengers. Historically, “pedalcyclists” included both pedalcycle operators and passengers. A pedalcycle is a mechanism of transport that is powered solely by pedals.

**Pedestrians, All** – All persons not occupying either a motor vehicle or a pedalcycle, and who are involved in a collision with a motor vehicle. Historically, “pedestrians” have also included people on personal conveyances (e.g., wheelchair or skateboard).

## Sources

---

**Crash Data** – New Mexico Department of Transportation, Traffic Safety Division, Traffic Records Bureau, Traffic Crash Database, as of the report date below. Crash data are compiled using NMDOT Uniform Crash Reports (UCR), submitted by law enforcement agencies in the state, for any incident on a public roadway involving one or more motor vehicles that resulted in death, injury, or at least \$500 in property damage. These reports are processed by the NMDOT Traffic Records Bureau and analyzed by the University of New Mexico, Geospatial and Population Studies, Traffic Research Unit (TRU).

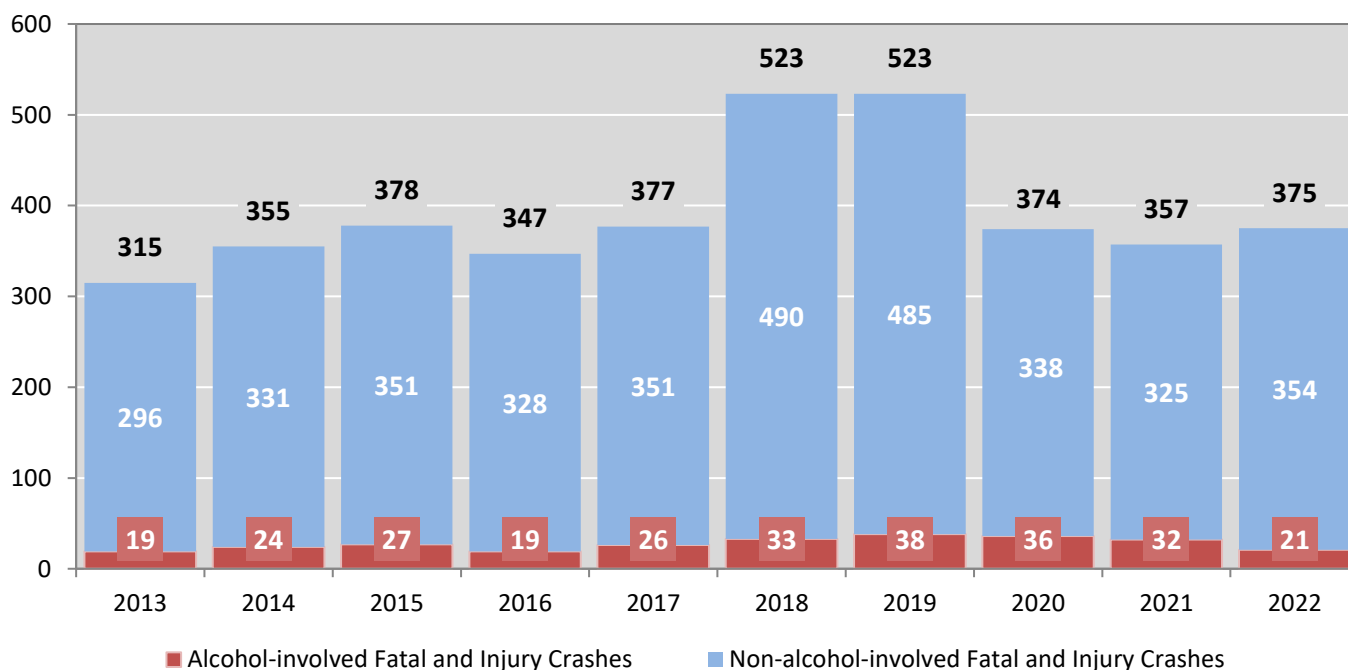
**DWI Arrest Data** – New Mexico Taxation and Revenue Department, Motor Vehicle Division, DWI File, as of the date listed in the footnote of Table 32. Repeat offenders are identified by the combination of account key, arrest date, and citation number. County data are based upon the county where the arrest took place. City data are based upon the city where the offender resides.

**Urban Areas** – Areas defined by the New Mexico Department of Transportation, Asset Management and Planning, 2010 U.S. Census Urbanized Area Boundaries, NMDOT-Adjusted, and U.S. Census Urban Clusters, August 21, 2013. Urban areas for crash years 2013-2017 include a 1/2 mile buffer extending out from those urban boundaries. In crashes before 2013, “urban” was defined as a town or city with a population of at least 2,500 people.

**Table 1: Total Crashes and Alcohol-involved Crashes by Crash Severity in Eddy County, 2013-2022**

Year	Total Crashes				Alcohol-involved Crashes			
	Fatal	Injury	Property Damage Only	Total	Fatal	Injury	Property Damage Only	Total
2013	11	304	846	1,161	2	17	25	44
2014	14	341	1,212	1,567	2	22	51	75
2015	9	369	1,212	1,590	1	26	37	64
2016	6	341	1,052	1,399	1	18	32	51
2017	16	361	1,157	1,534	3	23	28	54
2018	14	509	1,433	1,956	2	31	52	85
2019	15	508	1,365	1,888	5	33	38	76
2020	10	364	921	1,295	3	33	34	70
2021	13	344	981	1,338	7	25	41	73
2022	15	360	1,157	1,532	3	18	42	63

**Figure 1: Alcohol-involved Fatal and Injury Crashes Compared with Non-alcohol-involved Fatal and Injury Crashes in Eddy County, 2013-2022**



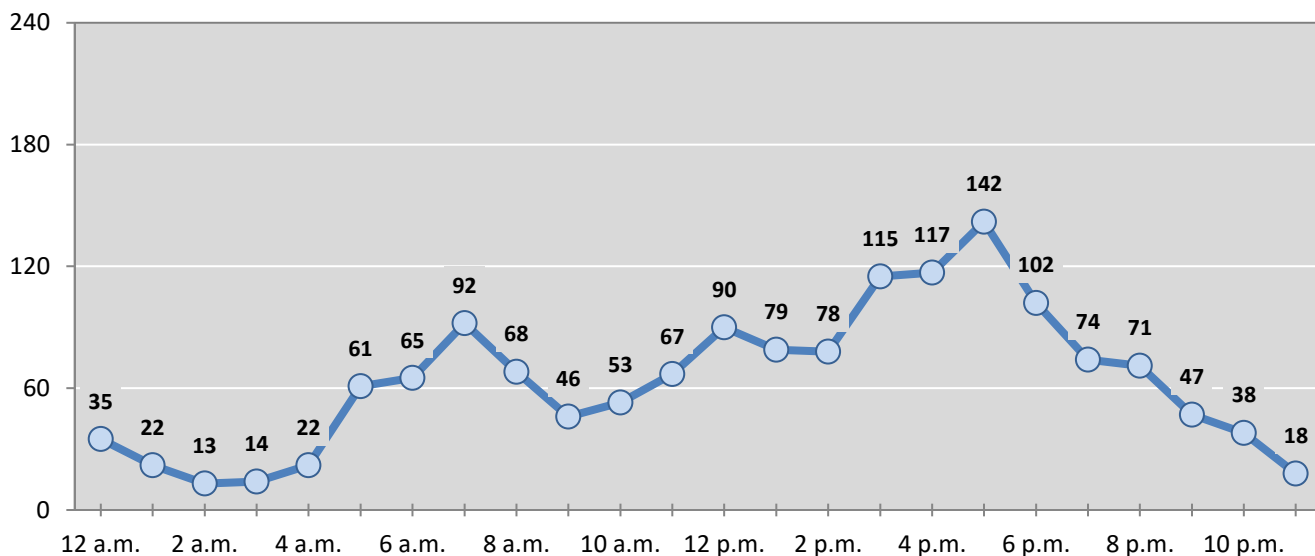
**Table 2: Crashes by Month in Eddy County, 2018-2022**

Month	Crashes					5-Year Average
	2018	2019	2020	2021	2022	
January	124	150	160	74	106	<b>123</b>
February	145	147	141	74	96	<b>121</b>
March	179	167	137	118	136	<b>147</b>
April	167	142	87	100	135	<b>126</b>
May	180	176	114	123	156	<b>150</b>
June	162	166	91	105	117	<b>128</b>
July	161	144	104	125	128	<b>132</b>
August	160	158	103	120	125	<b>133</b>
September	173	168	79	131	134	<b>137</b>
October	184	173	96	138	148	<b>148</b>
November	171	144	88	119	116	<b>128</b>
December	150	153	95	111	135	<b>129</b>
<b>Total Crashes</b>	<b>1,956</b>	<b>1,888</b>	<b>1,295</b>	<b>1,338</b>	<b>1,532</b>	<b>1,602</b>

**Table 3: Alcohol-involved Crashes by Month in Eddy County, 2018-2022**

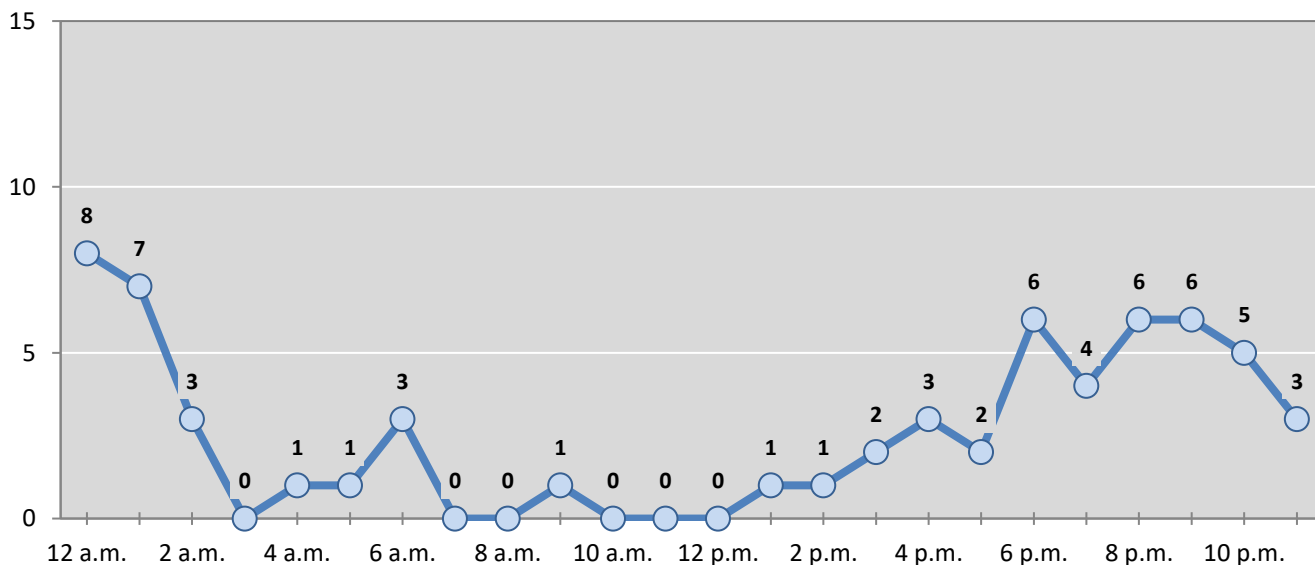
Month	Alcohol-involved Crashes					5-Year Average
	2018	2019	2020	2021	2022	
January	6	6	15	3	7	<b>7</b>
February	7	3	7	5	3	<b>5</b>
March	7	9	7	10	2	<b>7</b>
April	8	4	5	6	5	<b>6</b>
May	2	7	4	5	12	<b>6</b>
June	6	11	3	5	3	<b>6</b>
July	6	10	4	8	9	<b>7</b>
August	9	10	4	3	6	<b>6</b>
September	7	2	8	7	2	<b>5</b>
October	12	7	3	7	6	<b>7</b>
November	7	4	5	7	3	<b>5</b>
December	8	3	5	7	5	<b>6</b>
<b>Total Crashes</b>	<b>85</b>	<b>76</b>	<b>70</b>	<b>73</b>	<b>63</b>	<b>73</b>

**Figure 2: Crashes by Hour in Eddy County, 2022**



\* In 2022, Eddy County had 3 crashes for which hour data were missing.

**Figure 3: Alcohol-involved Crashes by Hour in Eddy County, 2022**



\* In 2022, Eddy County had 0 alcohol-involved crashes for which hour data were missing.

**Table 4: Total Crashes by Day of Week in Eddy County, 2018-2022**

Day of Week	Total Crashes					5-Year Average
	2018	2019	2020	2021	2022	
Sunday	191	188	125	146	156	161
Monday	292	301	194	206	242	247
Tuesday	326	321	212	211	244	263
Wednesday	276	276	212	195	243	240
Thursday	341	285	190	204	256	255
Friday	297	315	211	210	226	252
Saturday	233	202	151	166	165	183
<b>Total Crashes</b>	<b>1,956</b>	<b>1,888</b>	<b>1,295</b>	<b>1,338</b>	<b>1,532</b>	<b>1,602</b>

**Table 5: Heavy-truck Crashes by Day of Week in Eddy County, 2018-2022**

Day of Week	Heavy-truck Crashes					5-Year Average
	2018	2019	2020	2021	2022	
Sunday	30	16	18	13	14	18
Monday	40	32	31	30	30	33
Tuesday	47	46	34	28	43	40
Wednesday	37	41	33	31	36	36
Thursday	53	43	30	23	28	35
Friday	46	35	33	28	39	36
Saturday	36	25	12	14	16	21
<b>Total Crashes</b>	<b>289</b>	<b>238</b>	<b>191</b>	<b>167</b>	<b>206</b>	<b>218</b>

**Table 6: Motorcycle Crashes by Day of Week in Eddy County, 2018-2022**

Day of Week	Motorcycle Crashes <sup>1</sup>					5-Year Average
	2018	2019	2020	2021	2022	
Sunday	7	3	6	4	8	6
Monday	3	1	4	8	4	4
Tuesday	4	5	4	2	2	3
Wednesday	3	9	6	7	4	6
Thursday	7	5	5	2	5	5
Friday	6	4	2	1	6	4
Saturday	9	5	7	5	7	7
<b>Total Crashes</b>	<b>39</b>	<b>32</b>	<b>34</b>	<b>29</b>	<b>36</b>	<b>34</b>

<sup>1</sup> "Motorcycles" exclude ATVs.

**Table 7: Alcohol-involved Crashes by Day of Week in Eddy County, 2018-2022**

Day of Week	Alcohol-involved Crashes					5-Year Average
	2018	2019	2020	2021	2022	
Sunday	24	18	12	20	13	17
Monday	7	6	5	4	8	6
Tuesday	10	0	4	7	4	5
Wednesday	8	5	13	4	12	8
Thursday	8	13	12	9	8	10
Friday	9	15	7	9	4	9
Saturday	19	19	17	20	14	18
<b>Total Crashes</b>	<b>85</b>	<b>76</b>	<b>70</b>	<b>73</b>	<b>63</b>	<b>73</b>

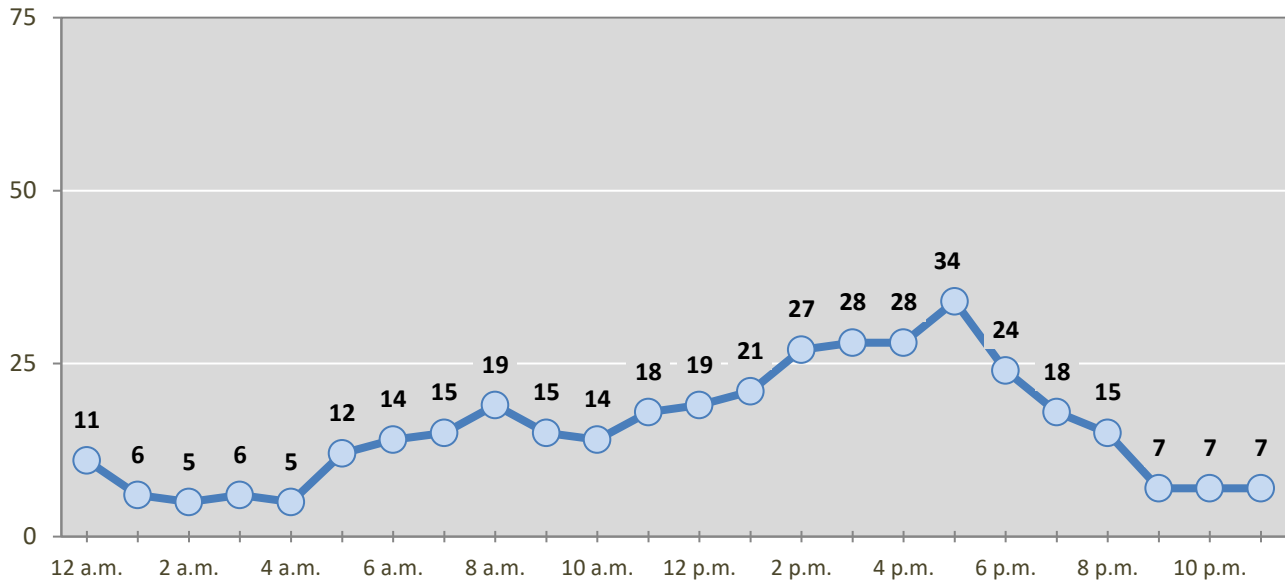
**Table 8: Fatal and Injury Crashes by Day of Week in Eddy County, 2018-2022**

Day of Week	Fatal and Injury Crashes					5-Year Average
	2018	2019	2020	2021	2022	
Sunday	54	52	35	44	36	44
Monday	71	71	59	63	51	63
Tuesday	89	80	59	60	64	70
Wednesday	58	86	69	50	57	64
Thursday	98	72	49	47	67	67
Friday	75	105	51	42	57	66
Saturday	78	57	52	51	43	56
<b>Total Crashes</b>	<b>523</b>	<b>523</b>	<b>374</b>	<b>357</b>	<b>375</b>	<b>430</b>

**Table 9: All Pedestrian and Pedalcycle Crashes by Day of Week in Eddy County, 2018-2022**

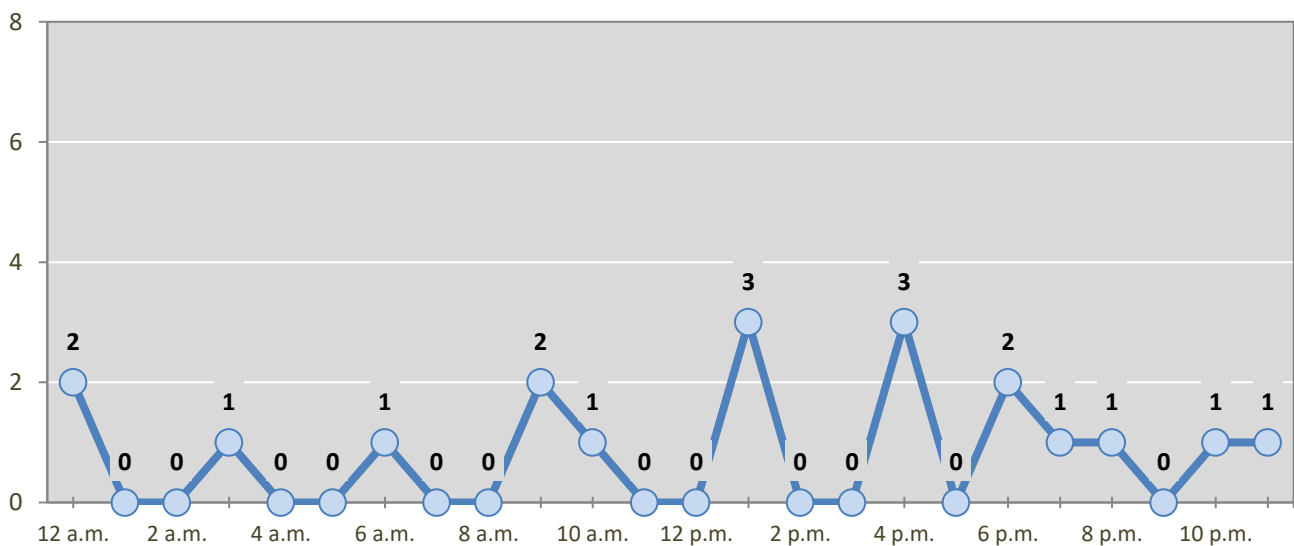
Day of Week	All Pedestrian and Pedalcycle Crashes					5-Year Average
	2018	2019	2020	2021	2022	
Sunday	3	1	2	1	5	2
Monday	2	3	3	2	3	3
Tuesday	4	2	1	3	3	3
Wednesday	3	1	3	2	0	2
Thursday	3	0	2	1	3	2
Friday	7	5	3	2	3	4
Saturday	3	1	3	1	2	2
<b>Total Crashes</b>	<b>25</b>	<b>13</b>	<b>17</b>	<b>12</b>	<b>19</b>	<b>17</b>

**Figure 4: Fatal and Injury Crashes by Hour in Eddy County, 2022**



\* In 2022, Eddy County had 0 crashes for which hour data were missing.

**Figure 5: All Pedestrian and Pedalcycle Crashes by Hour in Eddy County, 2022**



\* In 2022, Eddy County had 0 crashes for which hour data were missing.



**Table 10: Severity of Injuries to People in Crashes by Rural and Urban Locations and Alcohol Involvement in Eddy County, 2022**

Rural and Urban Locations by Alcohol Involvement	People in Crashes by Severity of Injuries					Total People
	Fatalities (Class K)	Suspected Serious Injuries (Class A)	Suspected Minor Injuries (Class B)	Possible Injuries (Class C)	No Apparent Injuries (Class O)	
<b>People in Alcohol-involved Crashes</b>	<b>3</b>	<b>2</b>	<b>15</b>	<b>8</b>	<b>119</b>	<b>147</b>
Urban	0	1	9	5	84	99
Rural Non-Interstate	3	1	6	3	35	48
Rural Interstate	0	0	0	0	0	0
<b>People in Crashes</b>	<b>18</b>	<b>25</b>	<b>159</b>	<b>319</b>	<b>3,173</b>	<b>3,694</b>
Urban	2	8	81	217	2,319	2,627
Rural Non-Interstate	16	17	78	102	854	1,067
Rural Interstate	0	0	0	0	0	0
<b>Percent in Alcohol-involved Crashes</b>	<b>17%</b>	<b>8%</b>	<b>9%</b>	<b>3%</b>	<b>4%</b>	<b>4%</b>

**Table 11: Total Crashes by Rural and Urban Locations and Crash Severity in Eddy County, 2018-2022**

Crash Severity by Rural and Urban Locations	Crashes by Year					5-Year Average
	2018	2019	2020	2021	2022	
<b>Total Rural Interstate</b>	<b>0</b>	<b>0</b>	<b>0</b>	<b>0</b>	<b>0</b>	<b>0</b>
Fatal Crash	0	0	0	0	0	0
Injury Crash	0	0	0	0	0	0
Property Damage Only Crash	0	0	0	0	0	0
<b>Total Rural Non-Interstate</b>	<b>681</b>	<b>660</b>	<b>447</b>	<b>387</b>	<b>522</b>	<b>539</b>
Fatal Crash	11	12	6	10	13	10
Injury Crash	208	194	149	103	139	159
Property Damage Only Crash	462	454	292	274	370	370
<b>Total Urban</b>	<b>1,275</b>	<b>1,228</b>	<b>848</b>	<b>951</b>	<b>1,010</b>	<b>1,062</b>
Fatal Crash	3	3	4	3	2	3
Injury Crash	301	314	215	241	221	258
Property Damage Only Crash	971	911	629	707	787	801

**Table 12: Total Crashes by First Harmful Event in Eddy County, 2018-2022**

First Harmful Event <sup>1</sup>	Total Crashes by Year					5-Year Average
	2018	2019	2020	2021	2022	
<b>Collision with Animal</b>	110	120	87	64	83	<b>93</b>
<b>Collision with Fixed Object</b>	158	146	152	147	134	<b>147</b>
<b>Collision with Motor Vehicle</b>	1,474	1,426	886	967	1,156	<b>1,182</b>
<b>Collision with Other Non-Fixed Object</b>	45	43	33	29	38	<b>38</b>
<b>Collision with Person</b>	25	13	17	12	19	<b>17</b>
Pedalcycle	10	6	4	5	7	<b>6</b>
Pedestrian	15	7	13	7	11	<b>11</b>
Other Non-Motorist	0	0	0	0	1	<b>0</b>
Missing Subanalysis Data	0	0	0	0	0	<b>0</b>
<b>Non-Collision</b>	140	132	99	83	65	<b>104</b>
Overturn/Rollover	106	105	68	51	38	<b>74</b>
All Other Non-Collision	34	27	31	32	27	<b>30</b>
<b>Other</b>	0	0	18	35	37	<b>30</b>
<b>Missing Data</b>	4	8	3	1	0	<b>3</b>
<b>Total Crashes</b>	<b>1,956</b>	<b>1,888</b>	<b>1,295</b>	<b>1,338</b>	<b>1,532</b>	<b>1,602</b>

<sup>1</sup> The options of “Other Non-Motorist” and “Other” were not available before 2020. The addition of options in 2020 decreases the use of previously available options.

**Table 13: Vehicles in Crashes by Vehicle Type in Eddy County, 2018-2022**

Vehicle Type <sup>1</sup>	Vehicles in Crashes by Vehicle Type					5-Year Average
	2018	2019	2020	2021	2022	
Buses	8	5	5	2	3	<b>5</b>
Motorcycles/ATVs	43	37	45	37	51	<b>43</b>
Passenger Cars	1,367	1,370	840	920	1,024	<b>1,104</b>
Pedalcycles	10	6	4	5	7	<b>6</b>
Pedestrians, All	17	7	13	8	12	<b>11</b>
Pickups	1,192	1,232	840	864	1,046	<b>1,035</b>
Semis/Heavy Trucks	329	261	205	174	220	<b>238</b>
Vans/SUVs/4WDs	445	401	280	327	371	<b>365</b>
Other Vehicles	44	0	4	3	2	<b>11</b>
Missing Data	47	94	22	50	57	<b>54</b>
<b>Total Vehicles</b>	<b>3,502</b>	<b>3,413</b>	<b>2,258</b>	<b>2,390</b>	<b>2,793</b>	<b>2,871</b>

<sup>1</sup> Pedestrians and pedalcycles are counted as non-motorized vehicles, when involved in a crash with a motor vehicle. "All pedestrians" encompasses pedestrians with or without personal conveyance (e.g., wheelchair, skateboard). See Page 18 for more data on non-motorized vehicles in crashes.

**Table 14: Motor Vehicle Drivers in Crashes by Vehicle Type  
and Age Group in Eddy County, 2022**

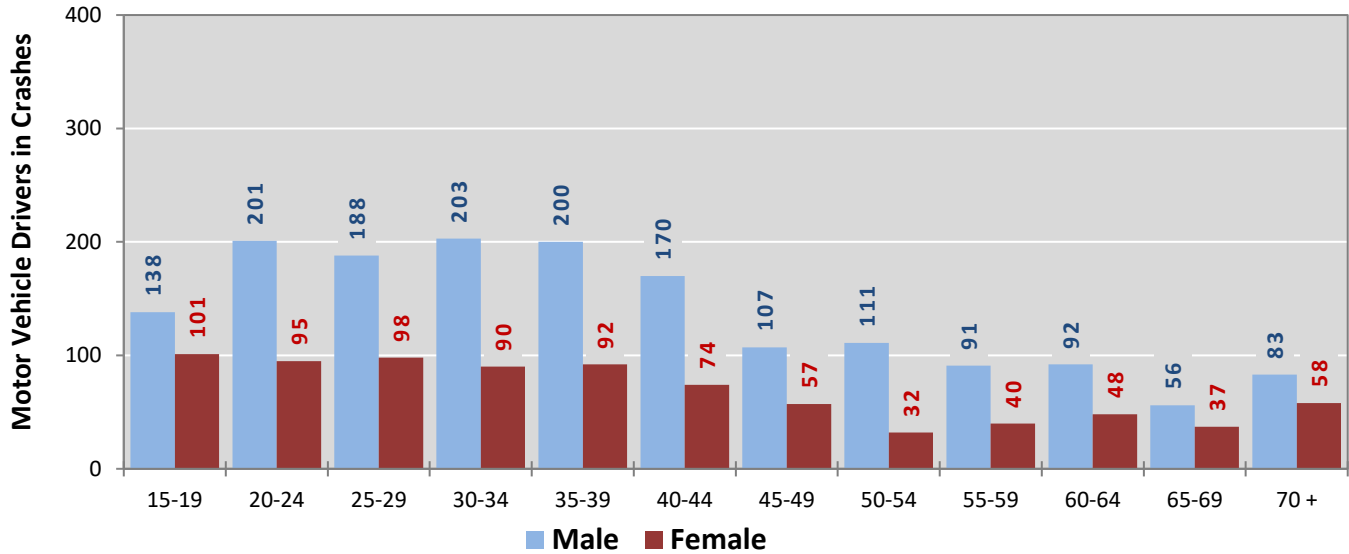
Age Groups	Motor Vehicle <sup>1</sup> Drivers by Vehicle Type and Age Group								Total Drivers
	Bus	Motor-cycle/ATV	Passenger	Pickup	Semi/Heavy Truck	Van 4WD SUV	Other Vehicle	Missing Data	
15-19	0	4	142	73	2	19	0	0	240
20-24	0	8	143	104	18	23	0	0	296
25-29	0	7	103	122	17	37	0	0	286
30-34	1	4	87	129	25	48	0	1	295
35-39	0	4	99	112	32	45	0	0	292
40-44	1	6	79	96	22	38	1	1	244
45-49	0	0	45	73	20	26	0	0	164
50-54	0	5	37	63	20	20	0	0	145
55-59	0	3	42	40	25	21	0	0	131
60-64	1	4	44	49	15	27	0	0	140
65-69	0	0	33	39	5	16	0	0	93
70 +	0	0	67	48	2	23	1	0	141
Missing Data	0	6	103	98	17	28	0	55	307
<b>Total Drivers</b>	<b>3</b>	<b>51</b>	<b>1,024</b>	<b>1,046</b>	<b>220</b>	<b>371</b>	<b>2</b>	<b>57</b>	<b>2,774</b>

**Table 15: Alcohol-involved Motor Vehicle Drivers in Crashes by Vehicle Type  
and Age Group in Eddy County, 2022**

Age Groups	Alcohol-involved Motor Vehicle <sup>1</sup> Drivers by Vehicle Type and Age Group								Total Drivers
	Bus	Motor-cycle/ATV	Passenger	Pickup	Semi/Heavy Truck	Van 4WD SUV	Other Vehicle	Missing Data	
15-19	0	0	2	2	0	0	0	0	4
20-24	0	0	7	4	0	0	0	0	11
25-29	0	1	2	4	0	1	0	0	8
30-34	0	0	4	4	0	3	0	0	11
35-39	0	0	5	3	0	2	0	0	10
40-44	0	0	2	1	0	1	0	0	4
45-49	0	0	0	1	0	0	0	0	1
50-54	0	0	0	1	0	0	0	0	1
55-59	0	0	0	2	0	2	0	0	4
60-64	0	0	3	0	0	0	0	0	3
65-69	0	0	0	1	0	0	0	0	1
70 +	0	0	0	0	0	0	0	0	0
Missing Data	0	0	1	1	0	0	0	1	3
<b>Total Drivers</b>	<b>0</b>	<b>1</b>	<b>26</b>	<b>24</b>	<b>0</b>	<b>9</b>	<b>0</b>	<b>1</b>	<b>61</b>

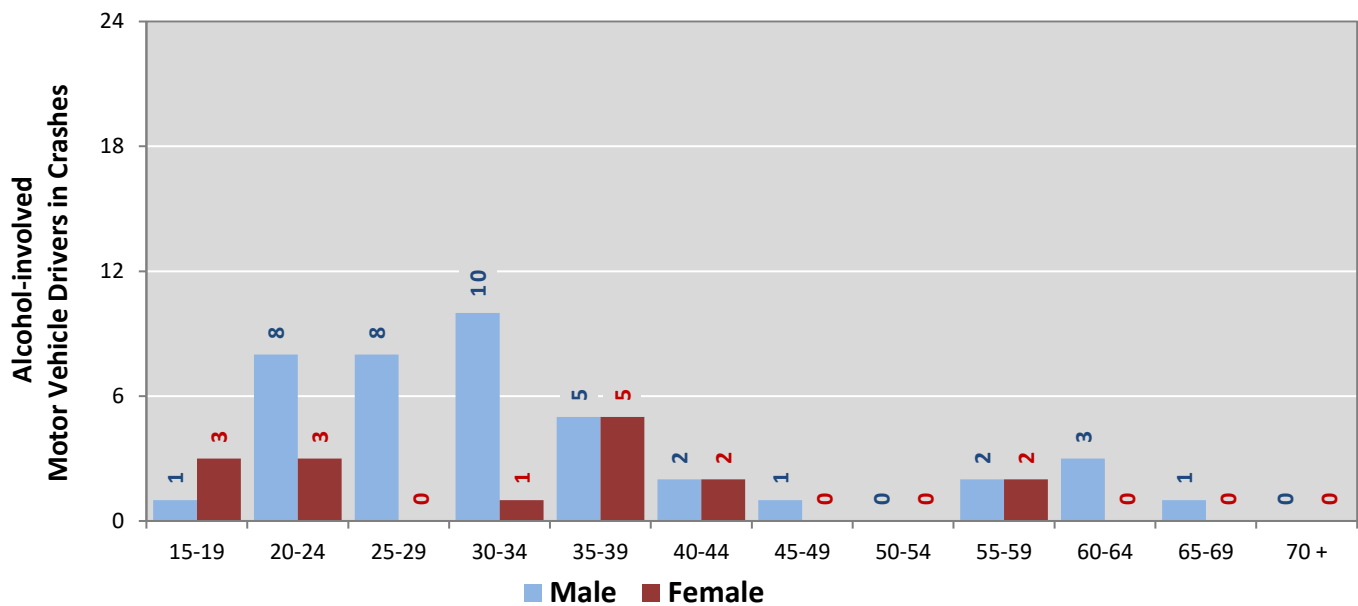
<sup>1</sup> See Page 18 for data on drivers of non-motorized vehicles in crashes (i.e. pedestrians and pedalcyclists).

**Figure 6: Motor Vehicle Drivers in Crashes by Age Group and Sex in Eddy County, 2022**



\* In 2022, Eddy County had 312 drivers in crashes for which age or sex data were missing.

**Figure 7: Alcohol-involved Motor Vehicle Drivers in Crashes by Age Group and Sex in Eddy County, 2022**



\* In 2022, Eddy County had 4 drivers in crashes for which age or sex data were missing.

**Table 16: Alcohol-involved Motor Vehicle Drivers Under 21 (Ages 15-20) in Crashes in Eddy County, 2018-2022**

Age <sup>1</sup>	Year					5-Year Total
	2018	2019	2020	2021	2022	
15	0	0	0	0	0	0
16	0	0	0	1	0	1
17	0	1	3	2	3	9
18	0	1	2	3	0	6
19	2	1	4	1	1	9
20	1	2	4	2	0	9
<b>Total Drivers</b>	<b>3</b>	<b>5</b>	<b>13</b>	<b>9</b>	<b>4</b>	<b>34</b>

**Table 17: Motor Vehicle Drivers Under 21 (Ages 15-20) in Crashes by Age, Sex and Alcohol Involvement in Eddy County, 2022**

Age <sup>1</sup>	Total Drivers				Alcohol-involved Drivers			
	Sex		Total Drivers	Percent of Total	Sex		Total Drivers	Percent of Total
	Male	Female			Male	Female		
15	9	6	15	5%	0	0	0	0%
16	29	18	47	16%	0	0	0	0%
17	32	19	51	17%	1	2	3	75%
18	32	27	59	20%	0	0	0	0%
19	36	31	67	23%	0	1	1	25%
20	30	23	53	18%	0	0	0	0%
<b>Total Drivers</b>	<b>168</b>	<b>124</b>	<b>292</b>	<b>100%</b>	<b>1</b>	<b>3</b>	<b>4</b>	<b>100%</b>

<sup>1</sup> For analysis of drivers under age 21, when the driver age or sex are not identified on the crash report (typically hit-and-run drivers), the driver data are considered unreliable and are excluded from the analysis.

**Table 18: Frequency of Contributing Factors in Crashes  
by Crash Severity in Eddy County, 2022**

Contributing Factors	Frequency of Contributing Factor <sup>1</sup> by Crash Severity			
	Frequency in Fatal Crashes	Frequency in Injury Crashes	Frequency in Property Damage Only Crashes	Frequency in All Crashes
<b>Human</b>	<b>33</b>	<b>565</b>	<b>1,521</b>	<b>2,119</b>
Driver Inattention	8	191	558	757
Failed to Yield Right of Way	4	92	189	285
Following Too Closely	0	37	133	170
Other Improper Driving	0	29	73	102
Avoid No Contact Vehicle	1	18	67	86
Excessive Speed	4	33	48	85
Driver Distracted by Other Activity	1	21	58	80
Made Improper Turn	0	16	55	71
Under the Influence Of Alcohol	3	18	42	63
Drove Left of Center	2	21	37	60
Improper Backing	0	1	49	50
Passed Stop Sign	2	15	33	50
Disregarded Traffic Signal	1	16	30	47
Improper Lane Change	0	7	37	44
Speed Too Fast For Conditions	1	21	21	43
Improper Overtaking	1	9	24	34
Avoid No Contact Other	0	7	17	24
Cell Phone	0	5	18	23
Driver Distracted By Texting	0	3	9	12
Under the Influence Of Drugs	4	2	5	11
Driver Distracted by Passenger	0	1	7	8
Driver Distracted by Talking on Cell Phone	1	0	3	4
Failed to Yield For Police Vehicle	0	1	2	3
High-Speed Pursuit	0	0	3	3
Failed to Yield For Emer. Vehicle	0	0	2	2
Pedestrian Error	0	1	1	2
Driverless Moving Vehicle	0	0	0	0
Driver Distracted by Talking on Hands-Free Device	0	0	0	0
Vehicle Skidded Before Braking	0	0	0	0
<b>Vehicle</b>	<b>0</b>	<b>18</b>	<b>55</b>	<b>73</b>
Inadequate Brakes	0	4	18	22
Defective Tires	0	4	12	16
Other Mechanical Defect	0	4	12	16
Lights (Head, Signal, Tail)	0	3	5	8
Defective Steering	0	3	2	5
Coupling Device (Hitch, Chains)	0	0	3	3
Mirrors	0	0	2	2
Wheels	0	0	1	1
Exhaust System	0	0	0	0
Suspension	0	0	0	0
Windows/Windshield	0	0	0	0
Wipers	0	0	0	0
<b>Environment</b>	<b>1</b>	<b>24</b>	<b>176</b>	<b>201</b>
Animal(s) In Roadway	0	3	68	71
Backup - Prior Crash	0	0	21	21
Road Surface Conditions	0	6	14	20
Traffic Congestion	0	1	17	18
Low Visibility Due to Glare	1	4	13	18
Other Visual Obstruction(s)	0	4	13	17
Weather Conditions	0	3	14	17
Debris	0	2	3	5
Traffic Control Missing	0	0	5	5
Obstruction in Road	0	1	3	4
Backup - Prior Incident	0	0	3	3
Road Defect	0	0	2	2
Low Visibility Due to Smoke	0	0	0	0
<b>Other</b>	<b>13</b>	<b>319</b>	<b>959</b>	<b>1,291</b>
Other - No Driver Error	13	313	902	1,228
Missing Data	0	4	55	59
None	0	2	2	4
<b>Total</b>	<b>47</b>	<b>926</b>	<b>2,711</b>	<b>3,684</b>

<sup>1</sup> Multiple contributing factors may be reported for any vehicle in a crash.

**Table 19: People in Crashes by First Harmful Event and Severity of Injuries in Eddy County, 2022**

First Harmful Event (FHE) and Subanalysis	People in Crashes by Severity of Injuries					Total People
	Fatalities (Class K)	Suspected Serious Injuries (Class A)	Suspected Minor Injuries (Class B)	Possible Injuries (Class C)	No Apparent Injuries (Class O)	
<b>Collision with Animal</b>	<b>0</b>	<b>1</b>	<b>1</b>	<b>4</b>	<b>120</b>	<b>126</b>
Deer	0	0	1	1	74	76
Cattle/Cow	0	1	0	1	29	31
Horse	0	0	0	0	4	4
Small Domestic Animal	0	0	0	0	3	3
Antelope	0	0	0	0	0	0
Bear	0	0	0	0	0	0
Elk	0	0	0	0	0	0
Other (Bird, Cougar, Sheep, Goat)	0	0	0	0	0	0
Other Large Domestic Animal	0	0	0	0	0	0
Other Large Game Animal	0	0	0	0	0	0
Small Game Animal	0	0	0	0	0	0
Missing Subanalysis Data	0	0	0	2	10	12
<b>Collision with Fixed Object</b>	<b>2</b>	<b>3</b>	<b>14</b>	<b>12</b>	<b>134</b>	<b>165</b>
Fence	2	0	5	4	28	39
Other Post, Pole or Support	0	0	0	5	16	21
Utility Pole/Light Support	0	1	2	0	18	21
Other Fixed Object	0	0	0	1	14	15
Curb	0	0	0	0	12	12
Traffic Sign Support	0	0	0	0	10	10
Ditch	0	1	2	1	5	9
Traffic Barrier, Concrete	0	0	1	1	5	7
Wall or Building	0	0	2	0	4	6
Guardrail, End or Face	0	1	0	0	4	5
Tree (standing)	0	0	1	0	2	3
Culvert	0	0	0	0	1	1
Embankment	0	0	0	0	1	1
Median	0	0	0	0	1	1
Bridge Pier, Support, Rail, or Overhead	0	0	0	0	0	0
Traffic Barrier, Cable	0	0	0	0	0	0
Other (incl. hydrant, box, cattle guard, plant)	0	0	1	0	12	13
Missing Subanalysis Data	0	0	0	0	1	1
<b>Collision with Motor Vehicle</b>	<b>16</b>	<b>20</b>	<b>102</b>	<b>277</b>	<b>2,747</b>	<b>3,162</b>
MV in Transport	15	20	100	272	2,536	2,943
Parked MV	1	0	2	5	211	219
Missing Subanalysis Data	0	0	0	0	0	0
<b>Collision with Other Non-Fixed Object</b>	<b>0</b>	<b>0</b>	<b>0</b>	<b>1</b>	<b>58</b>	<b>59</b>
Struck by falling, shifting cargo	0	0	0	0	9	9
Work Zone/Maintenance Equipment	0	0	0	1	5	6
Railway Vehicle	0	0	0	0	4	4
Other Non-fixed Object	0	0	0	0	40	40
Missing Subanalysis Data	0	0	0	0	0	0
<b>Collision with Person</b>	<b>0</b>	<b>0</b>	<b>10</b>	<b>8</b>	<b>26</b>	<b>44</b>
Pedestrian	0	0	5	5	16	26
Pedalcycle	0	0	4	3	9	16
Other Non-Motorist	0	0	1	0	1	2
Missing Subanalysis Data	0	0	0	0	0	0
<b>Non-Collision</b>	<b>0</b>	<b>1</b>	<b>19</b>	<b>13</b>	<b>52</b>	<b>85</b>
Overturn/Rollover	0	1	14	6	27	48
Cargo/Equipment Loss or Shift	0	0	1	0	4	5
Fell/Jumped from MV	0	0	1	0	2	3
Fire/Explosion	0	0	0	0	3	3
Thrown or Falling Object	0	0	0	0	2	2
Immersion, Full or Partial	0	0	0	0	0	0
Jackknife	0	0	0	0	0	0
Other Non-Collision	0	0	3	7	14	24
Missing Subanalysis Data	0	0	0	0	0	0
<b>Other</b>	<b>0</b>	<b>0</b>	<b>13</b>	<b>4</b>	<b>36</b>	<b>53</b>
<b>Missing FHE and Subanalysis Data</b>	<b>0</b>	<b>0</b>	<b>0</b>	<b>0</b>	<b>0</b>	<b>0</b>
<b>Total People</b>	<b>18</b>	<b>25</b>	<b>159</b>	<b>319</b>	<b>3,173</b>	<b>3,694</b>

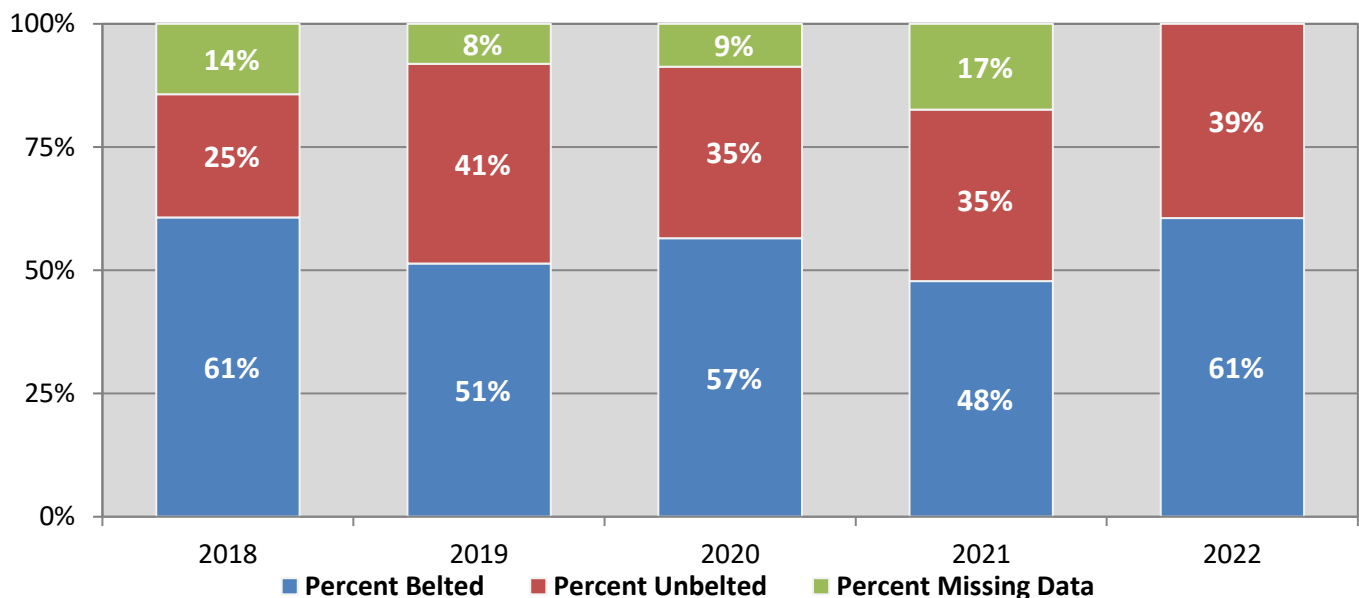
**Table 20: Killed or Injured Unbelted People in Crashes  
by Sex and Age Group in Eddy County, 2022**

Age Groups	Unbelted People Killed or Injured <sup>1,2</sup>				Total People
	Male	Percent of Male	Female	Percent of Female	
0-4	0	0%	0	0%	0
5-9	0	0%	1	10%	1
10-14	0	0%	1	10%	1
15-19	2	10%	2	20%	4
20-24	1	5%	1	10%	2
25-29	3	15%	0	0%	3
30-34	1	5%	0	0%	1
35-39	3	15%	2	20%	5
40-44	3	15%	1	10%	4
45-49	3	15%	0	0%	3
50-54	0	0%	0	0%	0
55-59	1	5%	0	0%	1
60-64	0	0%	1	10%	1
65-69	1	5%	0	0%	1
70 +	1	5%	0	0%	1
Missing Data	1	5%	1	10%	2
<b>Total People</b>	<b>20</b>	<b>100%</b>	<b>10</b>	<b>100%</b>	<b>30</b>

<sup>1</sup> People injured are in one of three categories: suspected serious injury, suspected minor injury, or possible injury.

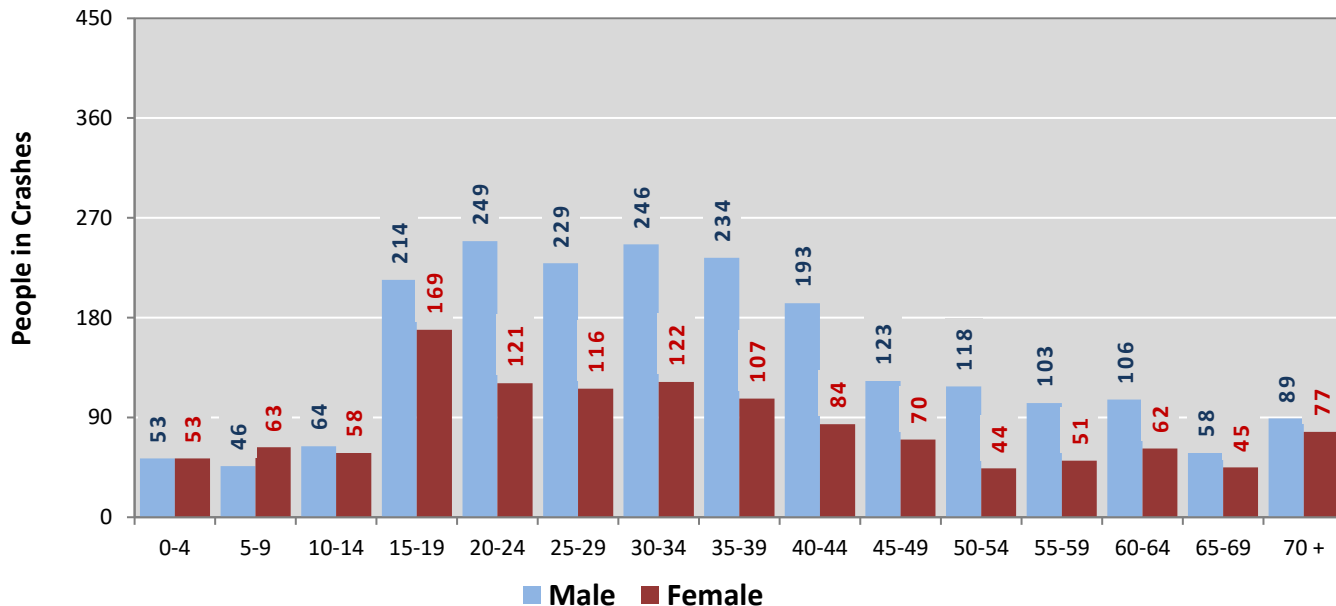
<sup>2</sup> Excludes people in or on buses, heavy trucks, motorcycles, or ATVs.

**Figure 8: Seatbelt Use by People in Crashes with Fatal or Suspected Serious Injuries in Eddy County, 2018-2022**



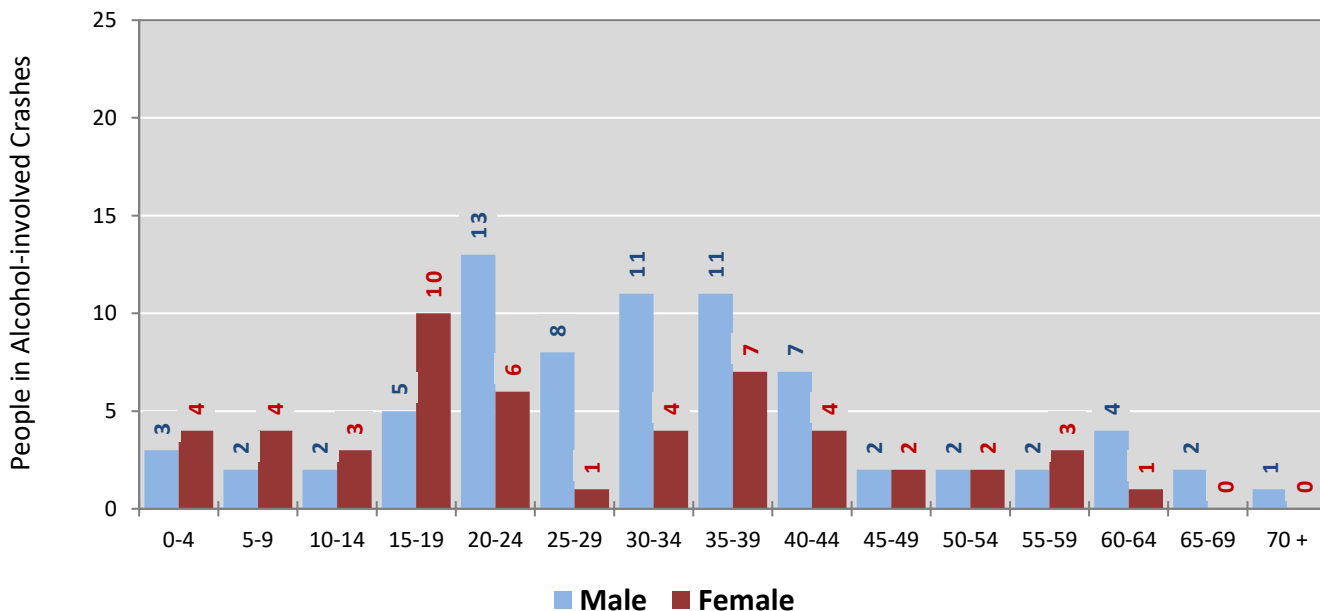


**Figure 9: People in Crashes by Age Group and Sex in Eddy County, 2022**



\* In 2022, Eddy County had 327 people in crashes for which age or sex data were missing.

**Figure 10: People in Alcohol-involved Crashes by Age Group and Sex in Eddy County, 2022**



\* In 2022, Eddy County had 21 people in alcohol-involved crashes for which age or sex data were missing.

**Table 21: All Pedestrians and All Pedalcyclists in Crashes by Age Group in Eddy County, 2018-2022**

Age Groups	All Pedestrians and All Pedalcyclists <sup>1</sup> in Crashes					5-Year Total People
	2018	2019	2020	2021	2022	
0-4	0	1	0	0	1	2
5-9	0	0	0	1	0	1
10-14	2	1	1	2	0	6
15-19	1	1	0	0	3	5
20-24	2	0	0	0	1	3
25-29	3	1	2	4	0	10
30-34	1	1	3	0	1	6
35-39	3	1	4	1	2	11
40-44	2	1	1	0	4	8
45-49	3	0	0	0	2	5
50-54	1	1	2	1	1	6
55-59	3	1	1	2	2	9
60-64	2	2	1	1	1	7
65-69	0	1	0	0	1	2
70 +	0	1	1	0	0	2
Missing Data	4	0	1	1	0	6
<b>Total People</b>	<b>27</b>	<b>13</b>	<b>17</b>	<b>13</b>	<b>19</b>	<b>89</b>

**Table 22: All Pedestrians and Pedalcycle Operators in Crashes by Alcohol Involvement and Severity of Injuries in Eddy County, 2022**

Alcohol Involvement	All Pedestrians and Pedalcycle Operators <sup>1</sup> in Crashes					Total People
	Fatalities (Class K)	Suspected Serious Injuries (Class A)	Suspected Minor Injuries (Class B)	Possible Injuries (Class C)	No Apparent Injury (Class O)	
<b>Pedalcycle Operators</b>	<b>0</b>	<b>0</b>	<b>4</b>	<b>3</b>	<b>0</b>	<b>7</b>
Involved	0	0	0	0	0	0
Not Involved	0	0	4	3	0	7
<b>All Pedestrians</b>	<b>0</b>	<b>0</b>	<b>6</b>	<b>5</b>	<b>1</b>	<b>12</b>
Involved	0	0	2	0	0	2
Not Involved	0	0	4	5	1	10
<b>Total People</b>	<b>0</b>	<b>0</b>	<b>10</b>	<b>8</b>	<b>1</b>	<b>19</b>

<sup>1</sup> "All pedestrians" encompasses pedestrians with and without personal conveyance (e.g., wheelchair, skateboard). "All pedalcyclists" encompasses both pedalcycle operators and pedalcycle passengers. All pedestrians and pedalcycle operators are counted as non-motorized vehicles when involved in a crash with a motor vehicle.

**Table 23: Occupants of Passenger Vehicles in Crashes  
by Severity of Injuries and Belt Usage in Eddy County, 2022**

Severity of Injuries	Injury Class	Occupants of Passenger Vehicles <sup>1</sup>			
		Belted	Unbelted	Missing Data	Total
Fatalities	K	3	10	0	13
Suspected Serious Injuries	A	17	3	0	20
Suspected Minor Injuries	B	88	12	8	108
Possible Injuries	C	280	5	11	296
No Apparent Injuries	O	2,443	21	405	2,869
<b>Total Occupants of Passenger Vehicles</b>		<b>2,831</b>	<b>51</b>	<b>424</b>	<b>3,306</b>

<sup>1</sup> Occupants of passenger cars, SUVs, 4WDs, vans, and pickup trucks only.

**Table 24: Motorcyclists in Crashes  
by Severity of Injuries and Helmet Usage in Eddy County, 2022**

Severity of Injuries	Injury Class	Motorcyclists in Crashes <sup>1</sup>			
		Helmeted	Unhelmeted	Missing Data	Total
Fatalities	K	1	0	0	1
Suspected Serious Injuries	A	2	1	0	3
Suspected Minor Injuries	B	8	7	5	20
Possible Injuries	C	2	2	0	4
No Apparent Injuries	O	6	2	4	12
<b>Total Motorcyclists</b>		<b>19</b>	<b>12</b>	<b>9</b>	<b>40</b>

<sup>1</sup> Excludes people on ATVs.

**Table 25: Occupants of Passenger Vehicles in Crashes  
by Year, Belt Usage, and Percent Killed in Eddy County, 2018-2022**

Year	Occupant Fatalities of Passenger Vehicles <sup>1</sup>				Total Occupants of Passenger Vehicles <sup>1</sup>				Percent Killed	
	Belted	Unbelted	Missing Data	Total Fatalities	Belted	Unbelted	Missing Data	Total Occupants	Belted	Unbelted
2018	6	7	0	13	3,588	41	408	4,037	0.17%	17.1%
2019	4	8	0	12	3,583	51	405	4,039	0.11%	15.7%
2020	1	5	0	6	2,210	45	338	2,593	0.05%	11.1%
2021	4	7	0	11	2,387	42	401	2,830	0.17%	16.7%
2022	3	10	0	13	2,831	51	424	3,306	0.11%	19.6%
<b>Average</b>	<b>3.6</b>	<b>7.4</b>	<b>0.0</b>	<b>11.0</b>	<b>2,919.8</b>	<b>46.0</b>	<b>395.2</b>	<b>3,361.0</b>	<b>0.12%</b>	<b>16.1%</b>

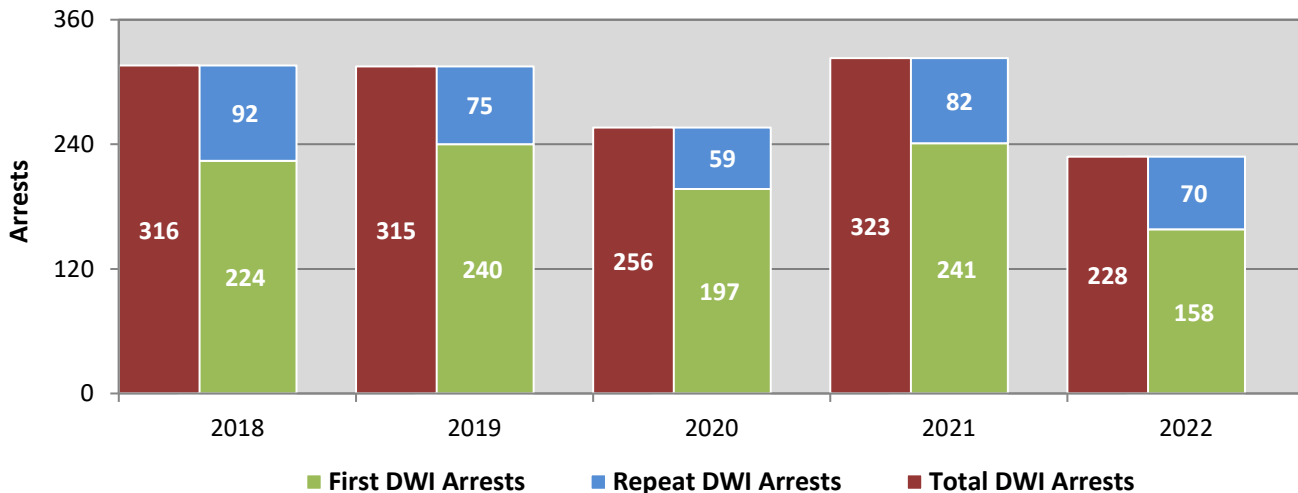
<sup>1</sup> Occupants of passenger cars, SUVs, 4WDs, vans, and pickup trucks only.

**Table 26: Motorcyclists in Crashes  
by Year, Helmet Usage, and Percent Killed in Eddy County, 2018-2022**

Year	Motorcyclist Fatalities <sup>1</sup>				Total Motorcyclists <sup>1</sup>				Percent Killed	
	Helmeted	Unhelmeted	Missing Data	Total Fatalities	Helmeted	Unhelmeted	Missing Data	Total Occupants	Helmeted	Unhelmeted
2018	1	3	0	4	9	19	16	44	11.1%	15.8%
2019	0	2	0	2	6	21	7	34	0.0%	9.5%
2020	0	0	0	0	11	17	10	38	0.0%	0.0%
2021	0	2	0	2	10	16	6	32	0.0%	12.5%
2022	1	0	0	1	19	12	9	40	5.3%	0.0%
<b>Average</b>	<b>0.4</b>	<b>1.4</b>	<b>0.0</b>	<b>1.8</b>	<b>11.0</b>	<b>17.0</b>	<b>9.6</b>	<b>37.6</b>	<b>3.6%</b>	<b>8.2%</b>

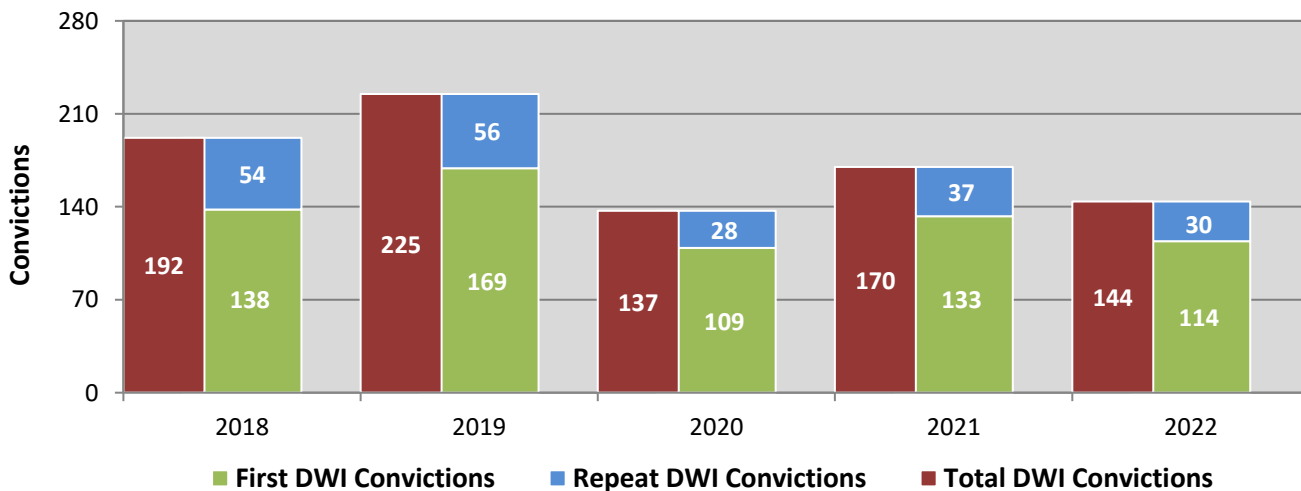
<sup>1</sup> Excludes people on ATVs.

**Figure 11: DWI Arrests in Eddy County, Showing First and Repeat DWI Arrests, 2018-2022**



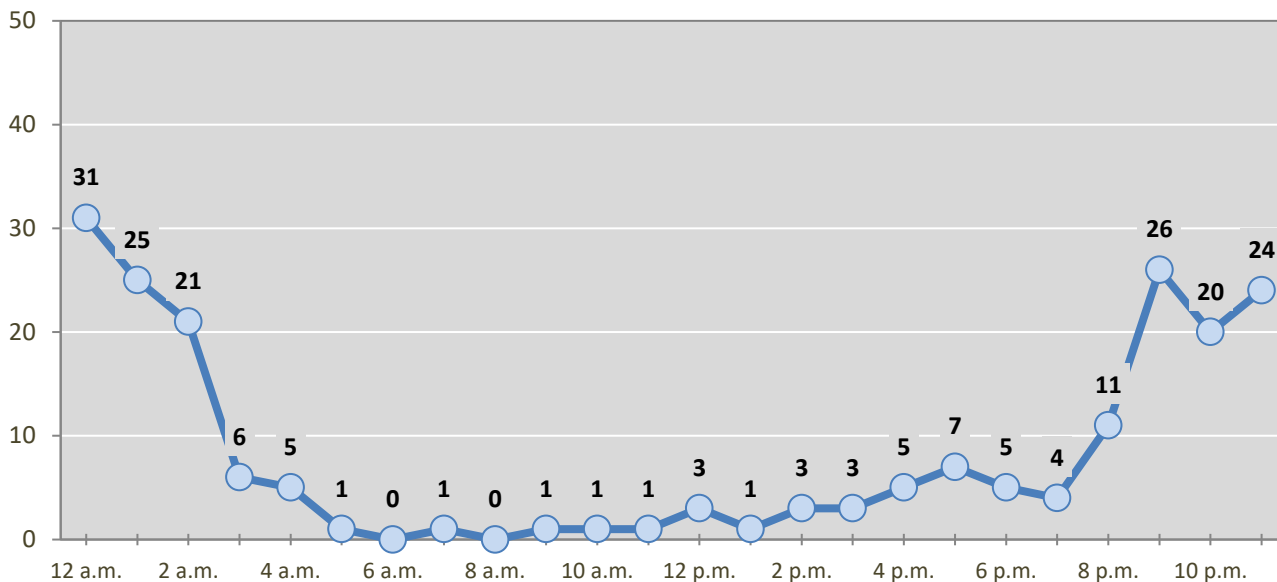
\*Values are based upon the year of the arrest.

**Figure 12: DWI Convictions in Eddy County, Showing First and Repeat DWI Convictions, 2018-2022**



\*Values are based upon the year of the conviction.

**Figure 13: DWI Arrests by Hour in Eddy County, 2022**



\* In 2022, Eddy County had 23 arrests for which hour data were missing.

**Table 27: DWI Arrests by Day of Week in Eddy County, 2018-2022**

Day of Week	Year					5-Year Average
	2018	2019	2020	2021	2022	
Sunday	67	81	73	95	47	73
Monday	36	21	17	19	34	25
Tuesday	16	16	24	33	17	21
Wednesday	33	14	25	24	20	23
Thursday	30	36	25	35	33	32
Friday	50	66	43	50	27	47
Saturday	84	81	49	67	50	66
<b>Total Arrests</b>	<b>316</b>	<b>315</b>	<b>256</b>	<b>323</b>	<b>228</b>	<b>288</b>

**Table 28: Driver First DWI Arrests by Age Group in Eddy County, 2018-2022**

Age Groups	Driver First DWI Arrests <sup>1</sup>				
	2018	2019	2020	2021	2022
15-19	10	17	23	17	7
20-24	38	56	35	45	26
25-29	45	51	37	45	21
30-34	46	29	40	40	35
35-39	28	31	22	31	22
40-44	18	25	9	27	21
45-49	17	11	9	16	8
50-54	7	8	8	6	10
55-59	11	4	8	7	4
60-64	1	6	5	4	3
65-69	2	0	0	3	0
70 +	1	2	1	0	1
Missing Data	0	0	0	0	0
<b>Total Drivers</b>	<b>224</b>	<b>240</b>	<b>197</b>	<b>241</b>	<b>158</b>

<sup>1</sup> Values are based upon the year of the arrest.

**Table 29: Driver Repeat DWI Arrests by Age Group in Eddy County, 2018-2022**

Age Groups	Driver Repeat DWI Arrests <sup>1</sup>				
	2018	2019	2020	2021	2022
15-19	0	0	1	0	0
20-24	4	9	5	9	4
25-29	16	8	5	8	7
30-34	12	11	7	12	14
35-39	11	14	9	12	10
40-44	8	11	10	19	14
45-49	16	8	6	7	6
50-54	12	5	2	4	5
55-59	10	6	8	5	4
60-64	1	2	4	3	4
65-69	2	1	0	3	1
70 +	0	0	2	0	1
Missing Data	0	0	0	0	0
<b>Total Drivers</b>	<b>92</b>	<b>75</b>	<b>59</b>	<b>82</b>	<b>70</b>

<sup>1</sup> Values are based upon the year of the arrest.

**Table 30: Driver First DWI Convictions by Age Group in Eddy County, 2018-2022**

Age Groups	Driver First DWI Convictions <sup>1</sup>				
	2018	2019	2020	2021	2022
15-19	5	10	10	10	6
20-24	22	39	20	34	19
25-29	23	38	19	23	20
30-34	27	30	17	25	22
35-39	16	21	13	19	15
40-44	15	12	7	4	18
45-49	12	8	13	2	4
50-54	4	5	3	3	3
55-59	8	2	2	8	4
60-64	3	2	4	3	2
65-69	2	1	0	2	0
70 +	1	1	1	0	1
Missing Data	0	0	0	0	0
<b>Total Drivers</b>	<b>138</b>	<b>169</b>	<b>109</b>	<b>133</b>	<b>114</b>

<sup>1</sup> Values are based upon the year of the conviction.

**Table 31: Driver Repeat DWI Convictions by Age Group in Eddy County, 2018-2022**

Age Groups	Driver Repeat DWI Convictions <sup>1</sup>				
	2018	2019	2020	2021	2022
15-19	0	0	0	0	0
20-24	2	5	4	2	1
25-29	7	8	2	4	2
30-34	10	7	4	6	9
35-39	7	7	5	6	4
40-44	3	7	2	9	4
45-49	7	10	2	5	4
50-54	8	4	6	2	3
55-59	5	5	1	2	2
60-64	4	2	2	0	0
65-69	1	1	0	0	1
70 +	0	0	0	1	0
Missing Data	0	0	0	0	0
<b>Total Drivers</b>	<b>54</b>	<b>56</b>	<b>28</b>	<b>37</b>	<b>30</b>

<sup>1</sup> Values are based upon the year of the conviction.



**Table 32: Court Disposition of DWI Arrests for Eddy County and the State, 2022**

Court Disposition of DWI Arrest <sup>1</sup>	Eddy County	Statewide	Percent of Statewide
Total DWI Arrests	228	8,381	<b>2.7%</b>
DWI Arrests Resulting in Convictions	126	4,102	<b>3.1%</b>
DWI Arrests Resulting in Dismissals <sup>2</sup>	11	989	<b>1.1%</b>
DWI Arrests Awaiting Disposition	91	3,290	<b>2.8%</b>

<sup>1</sup> These are the number of DWI arrests in 2022 and whether the case resulted in a conviction or dismissal, or is still awaiting court disposition, as reported in the NM MVD DWI File, as of December 2023.

<sup>2</sup> For this table, a very small number of "not guilty" rulings may be included in the category Dismissals.

**Table 33: Average Number of Days from Date of DWI Arrest to Date of Court Disposition in Eddy County and the State, 2022**

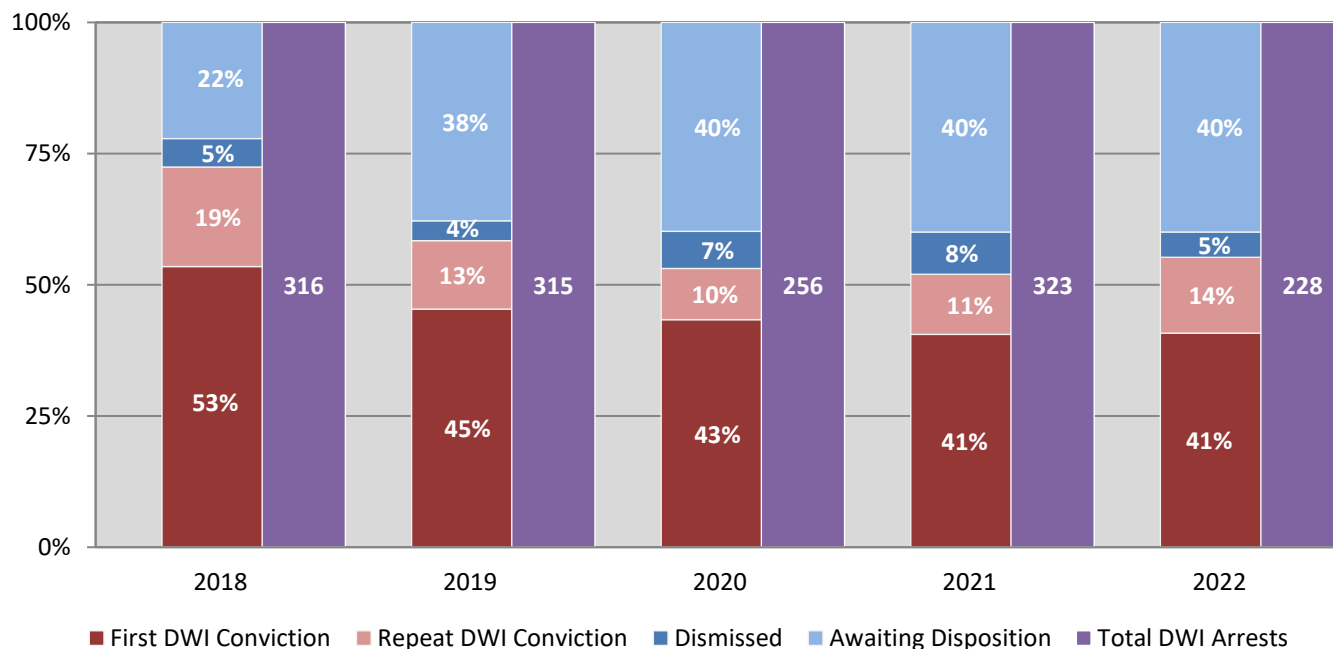
Court Disposition	Average Number of Days		Deviation from Statewide Average
	Eddy County	Statewide	
DWI Conviction	167	181	<b>-13</b>
DWI Dismissal	167	164	<b>4</b>

**Table 34: Court Disposition of DWI Arrests in Eddy County, 2018-2022**

Year of DWI Arrest <sup>1</sup>	Court Disposition				Total DWI Arrests
	First DWI Conviction	Repeat DWI Conviction	Dismissed	Awaiting Disposition	
2018	169	60	17	70	316
2019	143	41	12	119	315
2020	111	25	18	102	256
2021	131	37	26	129	323
2022	93	33	11	91	228

<sup>1</sup>Values are based upon the year of the arrest.

**Figure 14: Court Dispositions by Percentage of DWI Arrests in Eddy County, 2018-2022**



\*Table 34 contains the values used to calculate percentages shown in Figure 14.