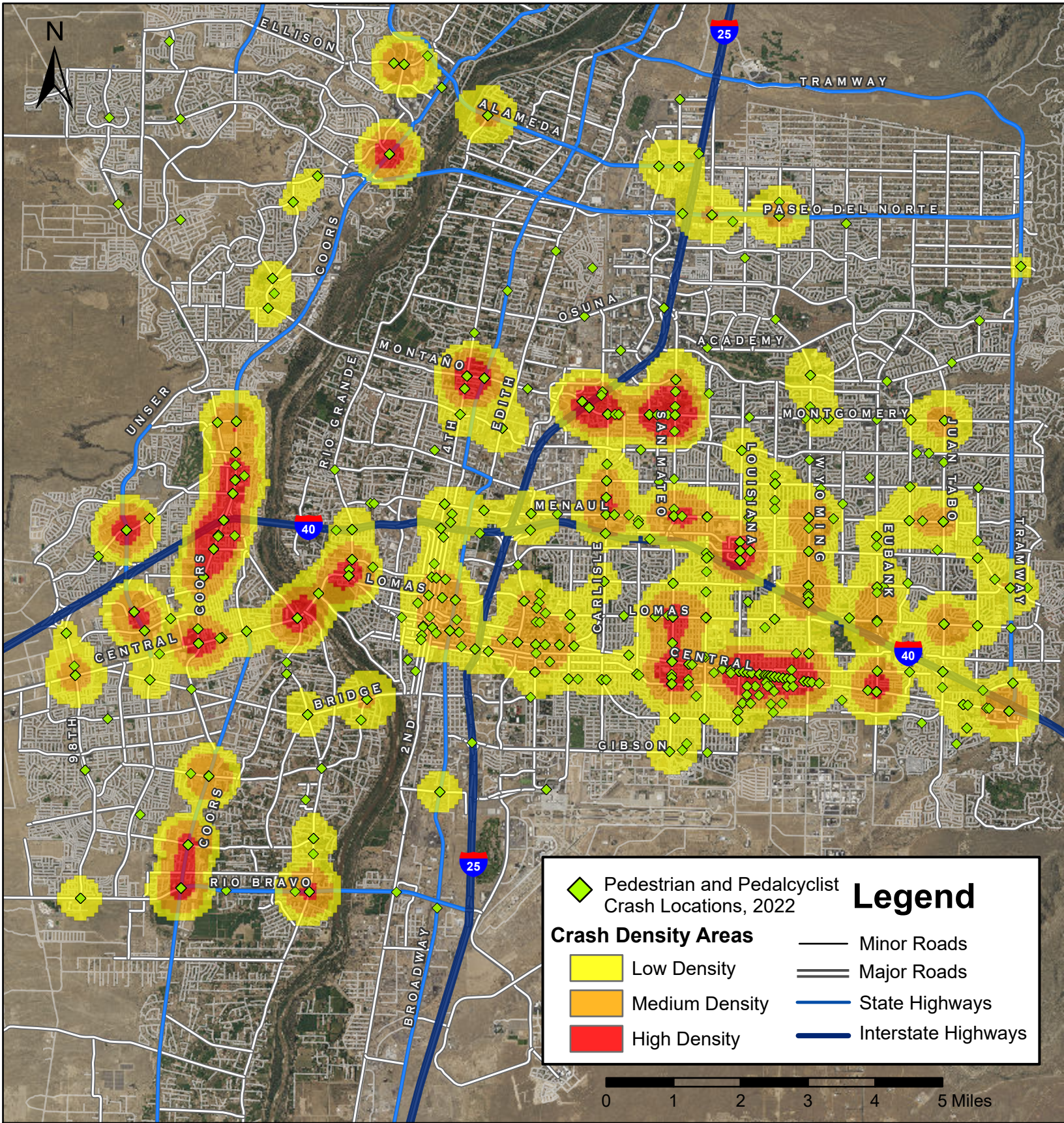


# Density Map of Pedestrian and Pedalcyclist Crashes in Albuquerque, 2022



Prepared for the New Mexico Department of Transportation,  
 Traffic Safety Division, Traffic Records Bureau. Under Contract CO6380 by the  
 University of New Mexico, Institute for Geospatial and Population Studies, Traffic Research Unit  
[gps.unm.edu](http://gps.unm.edu) December 2023 Contact [GPS@unm.edu](mailto:GPS@unm.edu)

