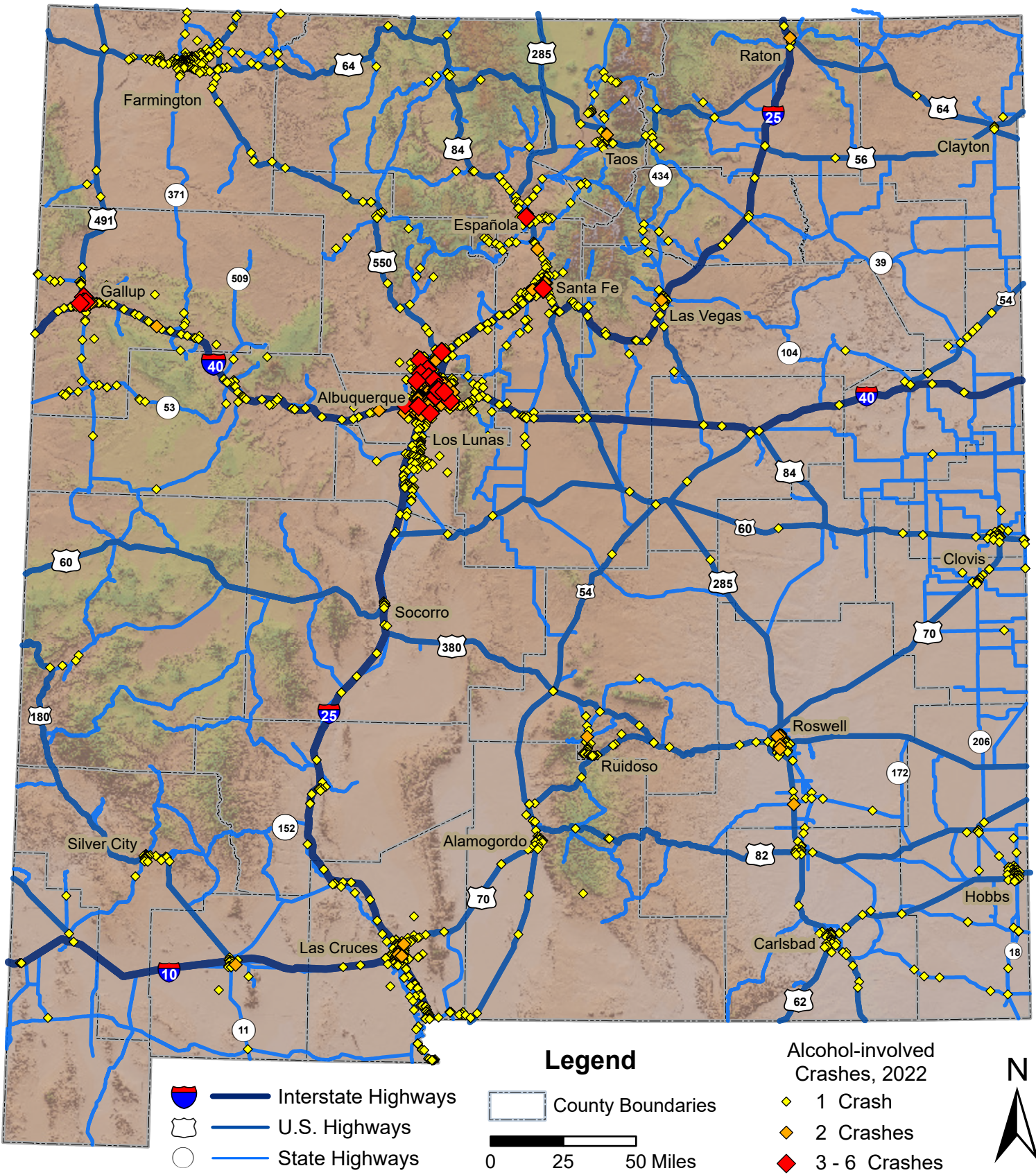


# Alcohol-involved Crashes in New Mexico, 2022



Prepared for the New Mexico Department of Transportation,  
 Traffic Safety Division, Traffic Records Bureau. Under Contract CO6380 by the  
 University of New Mexico, Geospatial and Population Studies, Traffic Research Unit (TRU)  
 gps.unm.edu December 2023 ContactGPS@unm.edu

