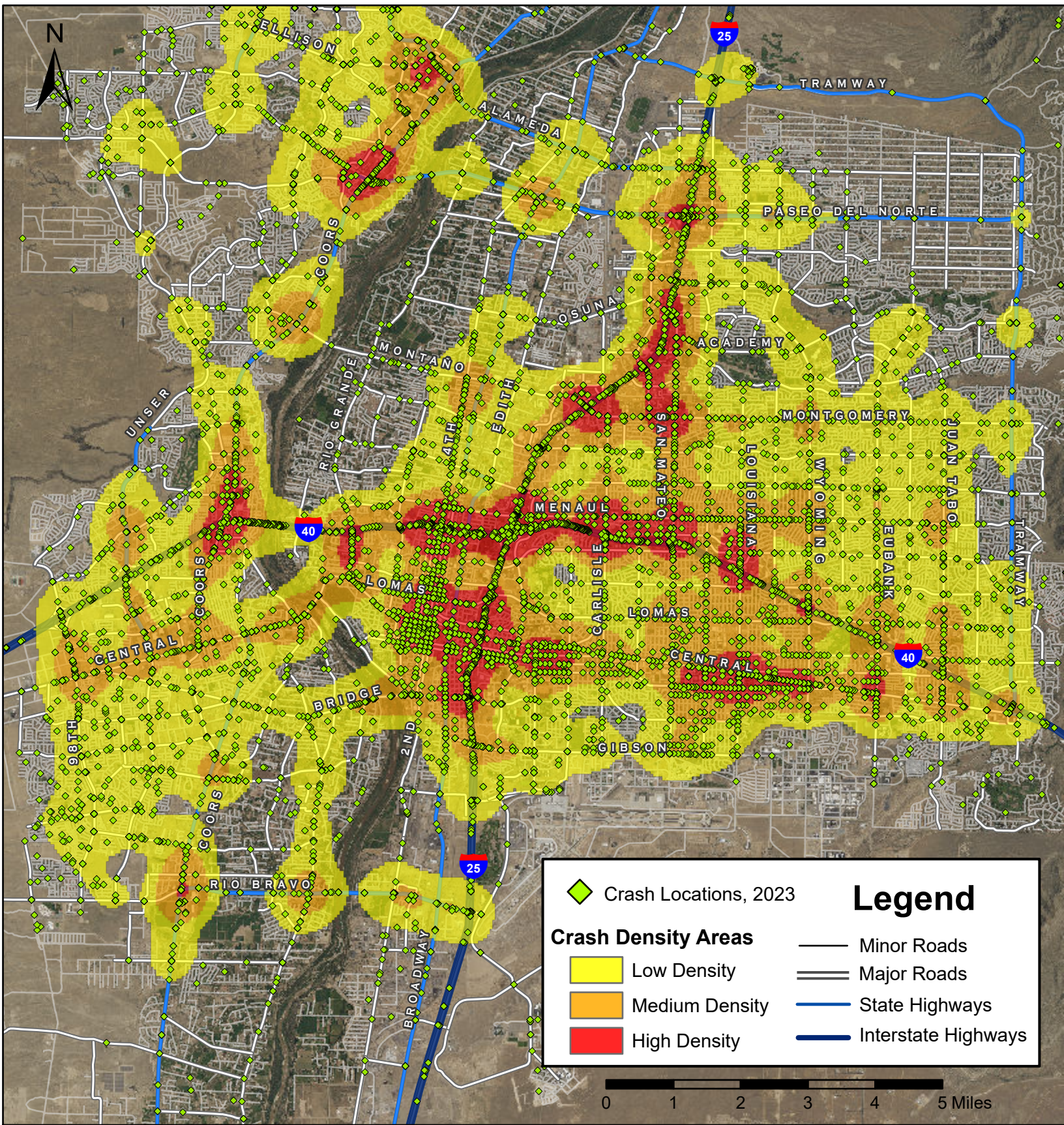


# Density Map of Crashes in Albuquerque, 2023



Prepared for the New Mexico Department of Transportation,  
 Traffic Safety Division, Traffic Records Bureau. Under Contract CO6380 by the  
 University of New Mexico, Institute for Geospatial and Population Studies, Traffic Research Unit  
[gps.unm.edu](http://gps.unm.edu) October 2024 Contact [GPS@unm.edu](mailto:GPS@unm.edu)

