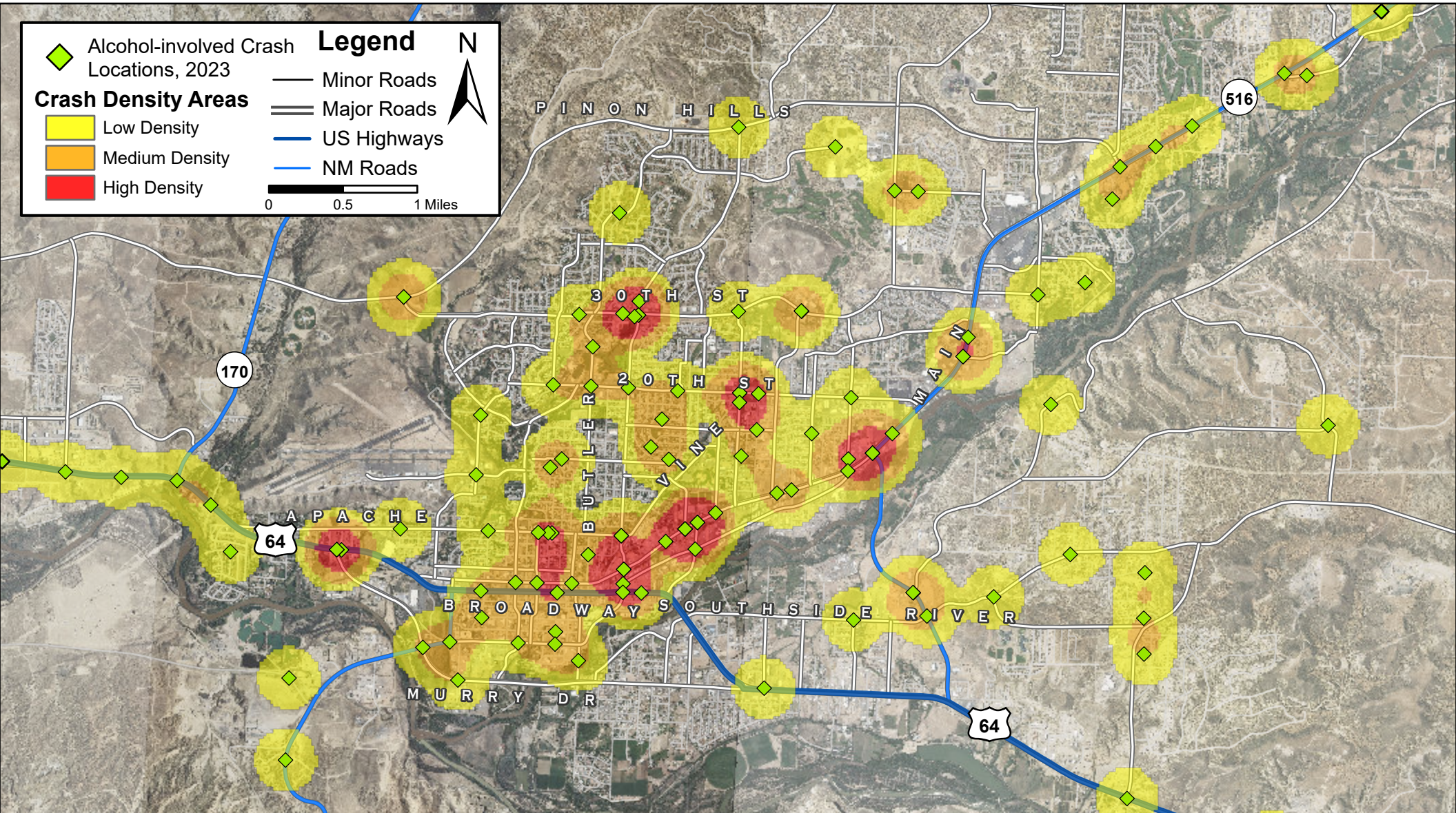


# Density Map of Alcohol-involved Crashes in Farmington, 2023



Prepared for the New Mexico Department of Transportation, Planning and Traffic Safety Divisions  
Under Contract 6380 by the University of New Mexico  
Geospatial and Population Studies Traffic Research Unit (TRU)  
gps.unm.edu October 2024 ContactGPS@unm.edu

